

Airport information:

Country: China

City: NINGBO

Coordinates: N 29° 49.4', E121 27.8

Elevation: 13

Customs: Customs: HS or O/R PPR

Fuel: Jet

RFF: CAT 5, CAT 8, CAT 8

hours: H24

Runways:

Runway 13

Takeoff length: 3200, Landing length: 3050

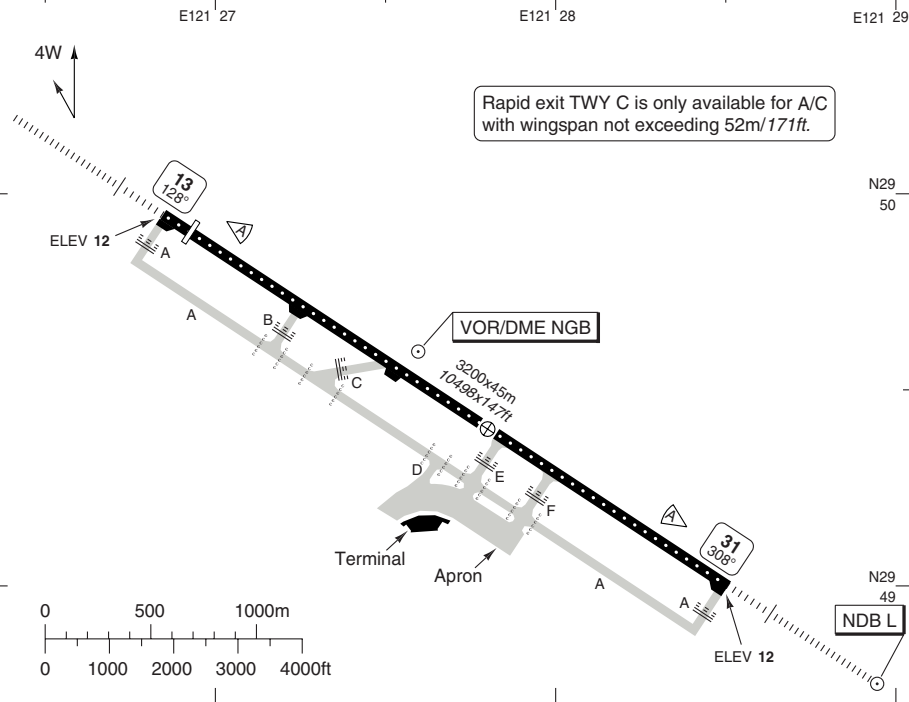
Runway 31

Takeoff length: 3200, Landing length: 3200

AERODROME

Ningbo GND 121.95	TWR 118.35 118.7 130.0	ATIS 126.45
-----------------------------	--------------------------------------	-----------------------

AD Elev 13	ARP: N29 49.4 E121 27.8	RFF: CAT 8	AD HR: HS or O/R
-------------------	-------------------------	------------	------------------



RWY	Slope	TORA m/ft	LDA m/ft	ALS	REDL	RCLL	Additional
13	0	3200 / 10498	3050 / 10006	H-D	H	30m	P 3°, REIL
31	0	3200 / 10498	3200 / 10498	H-D	H	30m	P 3°, REIL

STATE TAKE OFF MINIMA

RWY	Facilities	With TKOF ALT AD		Without TKOF ALT AD
		RVR/VIS		
		2 ENG	3 & 4 ENG	
13/31 a	REDL	400m	0.8km	NA
	NIL (day only)	500m	0.8km	
	NIL (day only) or REDL	1.6km b	1.6km b	

- a** RWY 31: 500ft / 5.0km if Climb Gradient below 5.0% and circling not permitted.
- b** Other ACFT Type

© Navitech - zsnb01laorg0

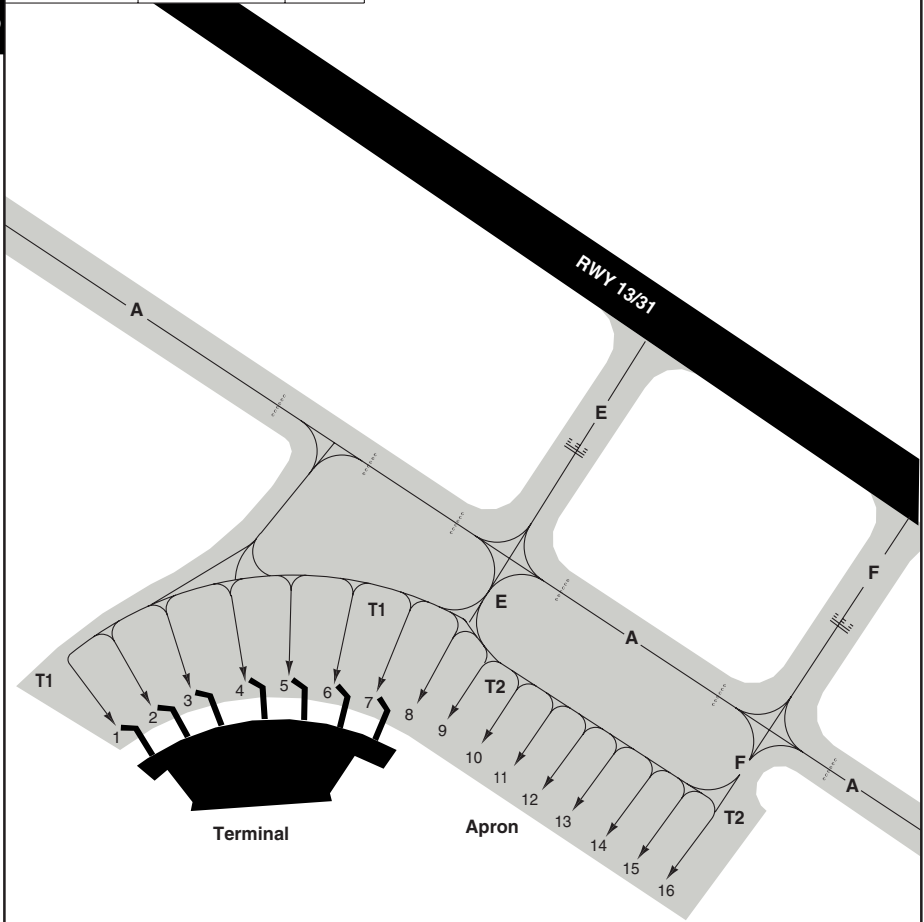
Change: New spec.

THIS CHART IS A PART OF NAVIGRAPH NDAC AND IS INTENDED FOR FLIGHT SIMULATION USE ONLY

AERODROME Parking

10 - 2

Ningbo GND 121.95	TWR 118.35 118.7 130.0	ATIS 126.45
-----------------------------	--	-----------------------



GENERAL INFORMATION

- | | |
|---|--|
| <p>1. ALTIMETER SETTING
TA 10830 above 1031 hPa.
TA 9850 between 980-1030 hPa.
TA 8860 below 979 hPa.</p> <p>2. CIRCUITS
Right hand circuit RWY 13.
Circuit ALT:
Cat C/D: 600m/1970ft, Cat A/B: 300m/990ft.</p> | <p>3. TWY RESTRICTION
180° turnaround on TWY is forbidden for all ACFT.</p> <p>4. PARKING
T2 is only available for ACFT with wingspan not exceeding 52m/171ft.</p> |
|---|--|

© Navitech - zsnb02laorg0

Change: New spec.

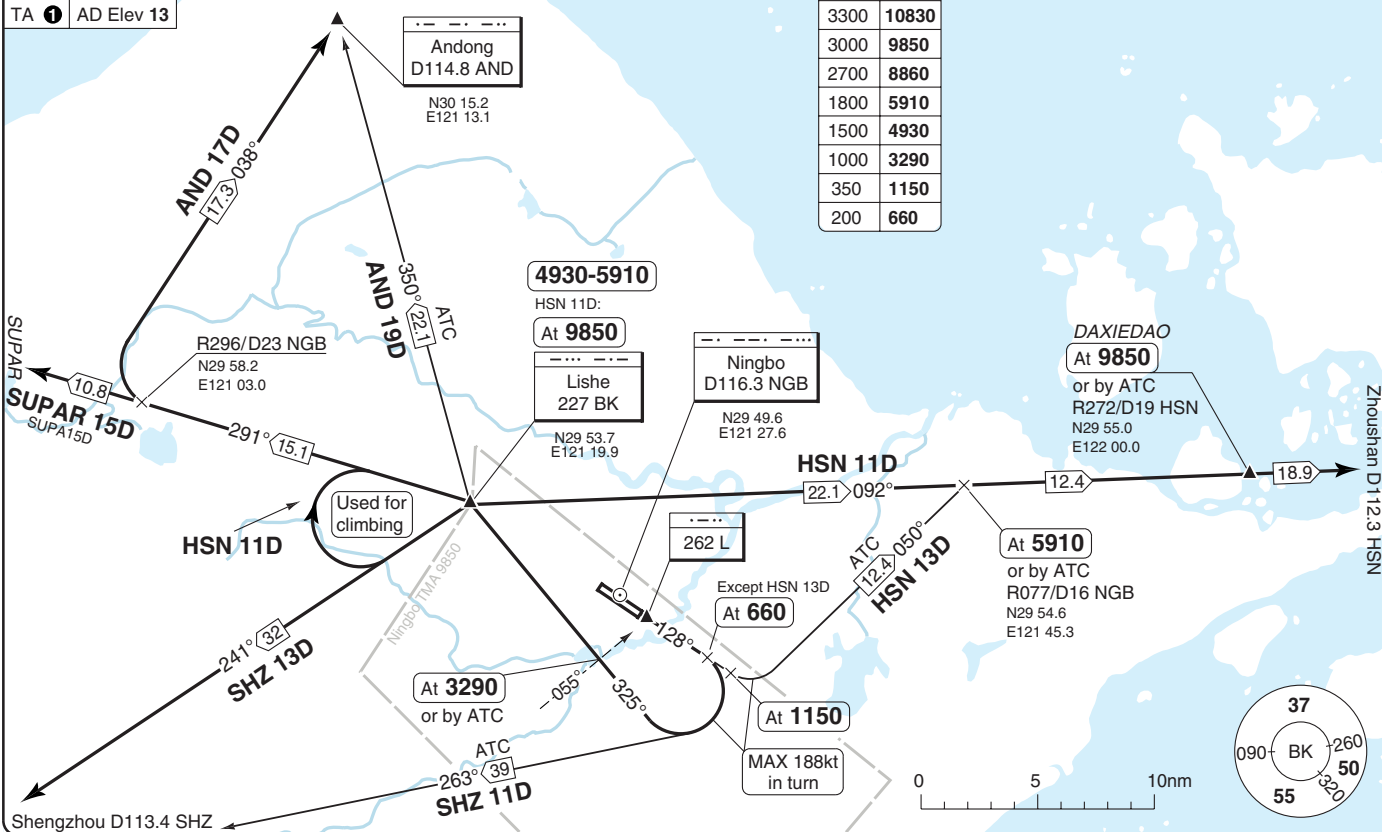
THIS CHART IS A PART OF NAVIGRAPH NDAC AND IS INTENDED FOR FLIGHT SIMULATION USE ONLY

Change: New spec.

Ningbo GND 121.95	TWR 118.35 118.7 130.0	ATIS 126.45
----------------------	------------------------------	----------------

① TA 10830 above 1031 hPa.
TA 9850 between 980-1030 hPa.
TA 8860 below 979 hPa.

m	ft
3300	10830
3000	9850
2700	8860
1800	5910
1500	4930
1000	3290
350	1150
200	660



SID RWY 13

30-1 18 MAY 11

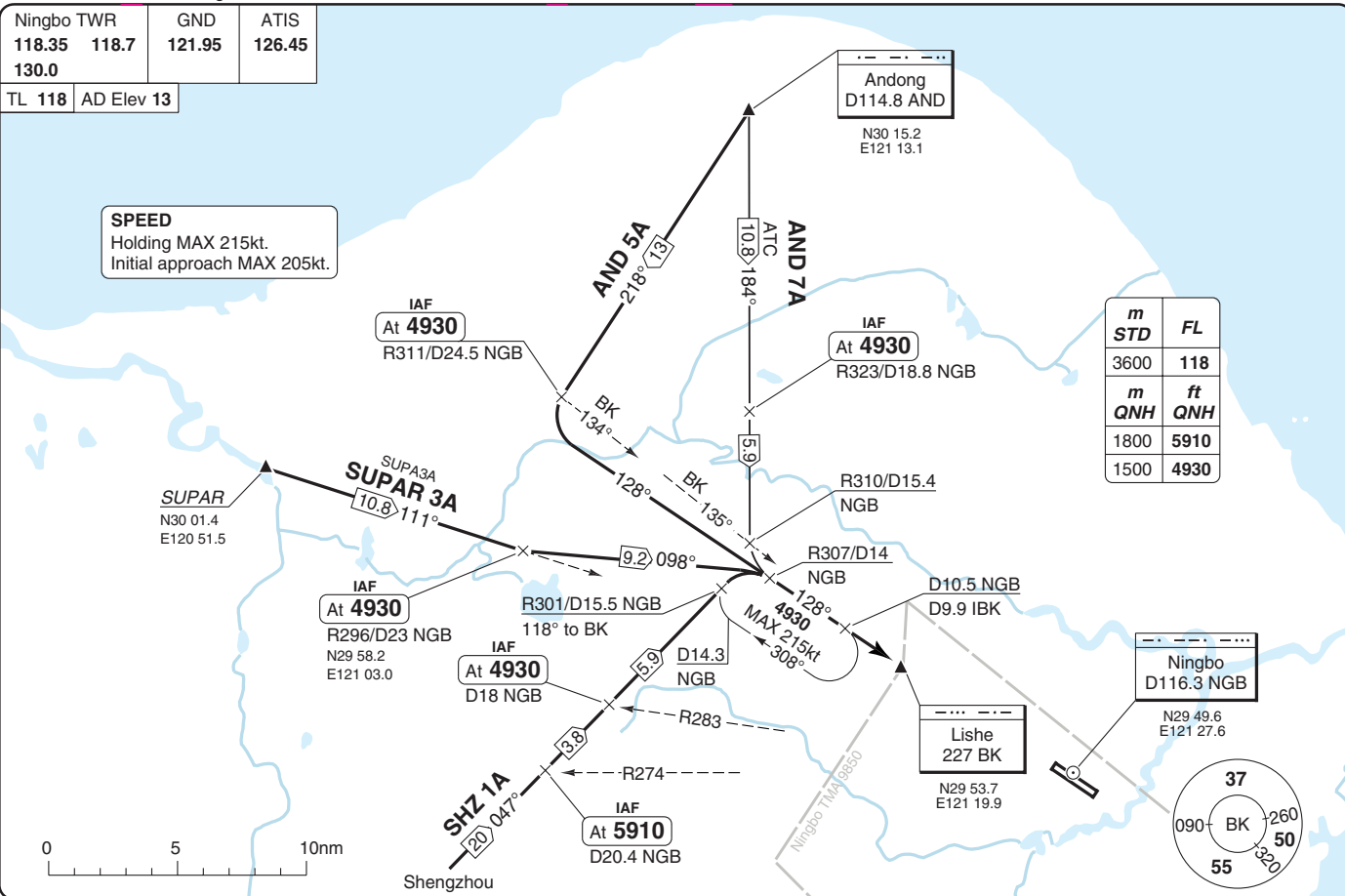
China - ZSNB / NGB
Lishe NINGBO

Ningbo TWR	GND	ATIS
118.35 118.7	121.95	126.45
130.0		

TL 118 AD Elev 13

SPEED
Holding MAX 215kt.
Initial approach MAX 205kt.

<i>m</i>	<i>STD</i>	<i>FL</i>
3600		118
<i>m</i>	<i>QNH</i>	<i>ft</i>
1800		5910
1500		4930



STAR RWY 13 from North, South, West

40 - 1 | 18 MAY 11

China - ZSNB / NGB
Lishe NINGBO

THIS CHART IS A PART OF NAVIGRAPH NDAC AND IS INTENDED FOR FLIGHT SIMULATION USE ONLY.

Change: New spec.

Lishe **NINGBO**

STAR RWY 13 from East

Ningbo TWR	GND	ATIS
118.35 118.7	121.95	126.45
130.0		

TL 118 AD Elev 13

SPEED
Initial approach MAX 205kt.

m	FL
STD	
3600	118
m	ft
QNH	QNH
2700	8860
1200	3940

IAF
At **8860**
or by ATC
Lishe
227 BK

N29 53.7
E121 19.9

HSN 1A

22.1

ATC

257° (16.2)
HSN 3A

IAF
At **3940**
Ningbo
D116.3 NGB

N29 49.6
E121 27.6

Ningbo TMA 9850

0 5 10nm

HSN 1A/3A

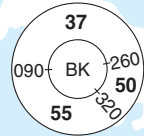
12.4

272° (18.9)

Zhoushan

At **8860**
or by ATC
R077/D16 NGB
N29 54.6
E121 45.3

DAXIEDAO
At **8860**
or by ATC
R272/D19 HSN
N29 55.0
E122 00.0



Ningbo TWR		GND	ATIS
118.35	118.7	121.95	126.45
130.0			

TL 118 AD Elev 13

Andong
D114.8 AND

N30 15.2
E121 13.1

m	FL
3600	118
m	ft
2700	8860
1800	5910
1500	4930
1200	3940

SPEED
Holding MAX 215kt.
Initial approach MAX 205kt.

HSN 2A
At **8860**
or by ATC

At **5910**

Lishe
227 BK

N29 53.7
E121 19.9

HSN 2A

22.1

HSN 2A
HSN 4A (ATC)

12.4

272°
18.9

DAXIEDAO
At **8860**
or by ATC
R272/D19 HSN
N29 55.0
E122 00.0

IAF
HSN 4A
At **4930**
R077/D16 NGB
N29 54.6
E121 45.3

IAF
At **3940**

Ningbo
D116.3 NGB

N29 49.6
E121 27.6

IAF
At **5910**

D14 NGB
N29 35.6
E121 26.8

Used for
descending

4930
MAX 215kt
300°

At **4930**
R296/D23 NGB
N29 58.2
E121 03.0

HSN 2A

32 061°
SHZ 2A

ATC
SHZ 4A

33 095°

SUPAR
10.8 111°
SUPAR 4A
SUPA4A

R302/D25
NGB

218°
AND 6A

17.3

ATC
AND 8A

22.1 170°

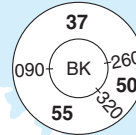
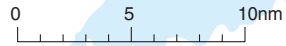
-121° BK

15.1

128°

Ningbo TMA 3850

R188



STAR RWY 31

40 - 3 | 18 MAY 11

China - ZSNB / NGB
Lishe NINGBO

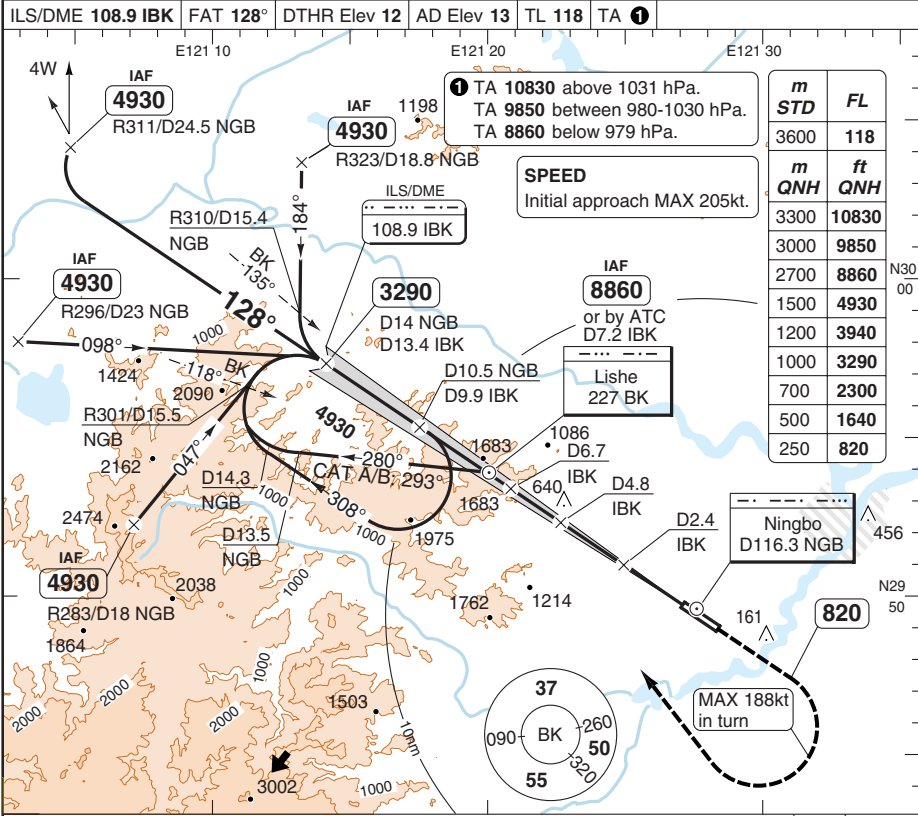
THIS CHART IS A PART OF NAVIGRAPH NDAC AND IS INTENDED FOR FLIGHT SIMULATION USE ONLY

Change: New spec.

Reverse side blank

ILS RWY 13

Ningbo TWR 118.35 118.7 130.0	GND 121.95	ATIS 126.45
ILS/DME 108.9 IBK FAT 128° DTHR Elev 12 AD Elev 13 TL 118 TA ①		



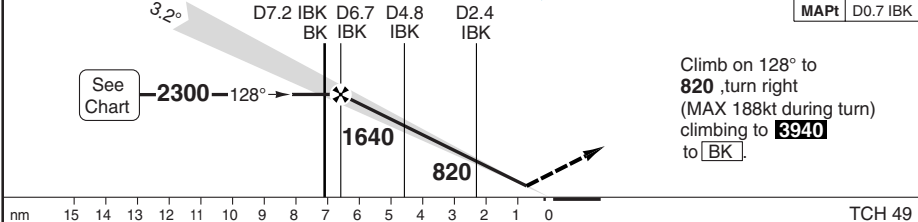
<i>m</i>	<i>STD</i>	<i>FL</i>
3600		118
3300	10830	
3000	9850	
2700	8860	
1500	4930	
1200	3940	
1000	3290	
700	2300	
500	1640	
250	820	

① TA **10830** above 1031 hPa.
TA **9850** between 980-1030 hPa.
TA **8860** below 979 hPa.

SPEED
Initial approach MAX 205kt.

or by ATC
D7.2 IBK
Lishe
227 BK

Climb on 128° to **820**, turn right (MAX 188kt during turn) climbing to **3940** to [BK].



ACFT	ILS+DME	LOC+DME	Circling ⓐ	ⓐ Southwest of AD.	DME IBK	3.2° ALT	LDA 3050x45 10006x147ft P 3°
A	230 (214) 550m	430 (414) 1200m	690 (676) 1.5km		6.7	2300	
B			690 (676) 1.6km		6	2070	
C	250 (230) 550m		1370 (1349) 2.4km		5	1730	
D			2240 (2218) 3.6km		4	1380	
					3	1040	
					2	700	
					1.2	430	

© Navtech - zsnb01iaip00

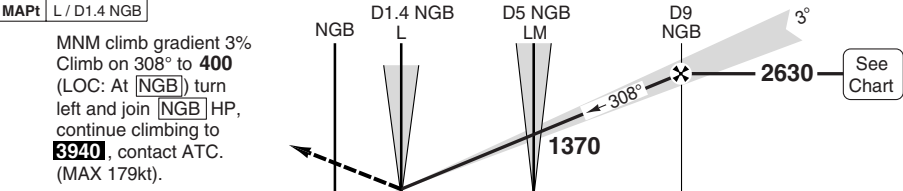
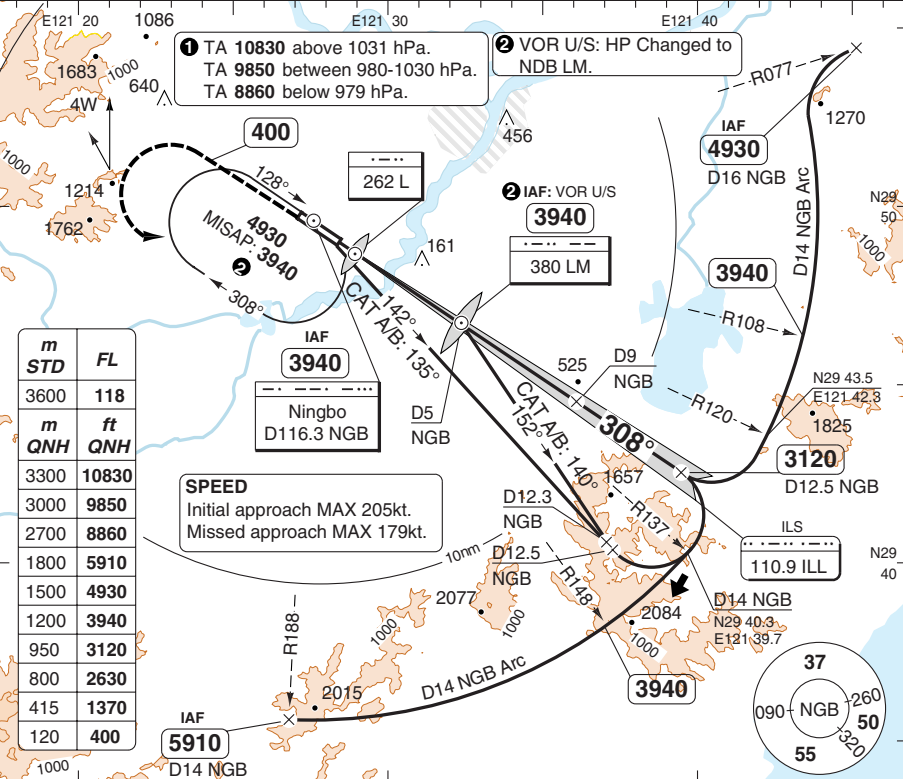
50 - 1

FALS

ILS RWY 31

Ningbo TWR 118.35 118.7
130.0
GND 121.95
ATIS 126.45

ILS 110.9 ILL FAT 308° THR Elev 12 AD Elev 13 TL 118 TA 1



TCH 49

ACFT	ILS 3.0%	LOC+DME 3.0%	Circling a
A	230 (214) 550m	430 (414) 1200m	690 (676) 1.5km
B			690 (676) 1.6km
C	250 (230) 550m		1370 (1349) 2.4km
D			2240 (2218) 3.6km

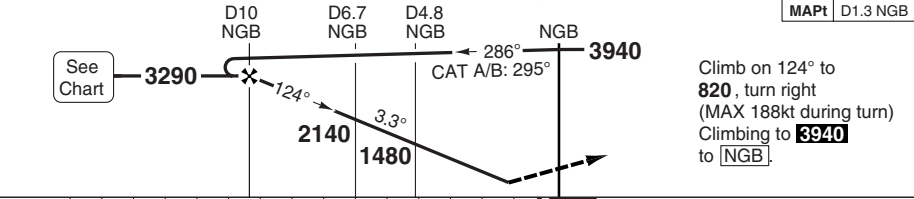
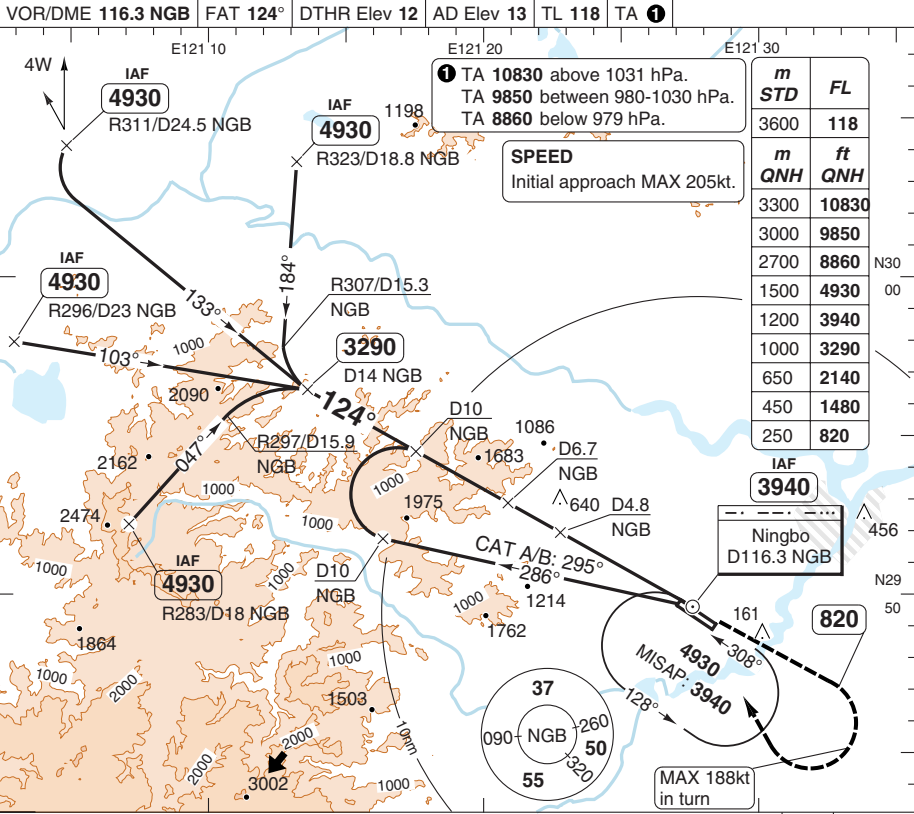
DME NGB	3.0° ALT	LDA 3200x45
9	2630	10498x147ft
7	2010	
6	1690	
5	1380	
4	1060	
3	740	
2.0	430	

GS	80	100	120	140	160
ROD 3.0°	430	540	640	750	860

Change: New spec.

VOR RWY 13 VOR/DME

Ningbo TWR 118.35 118.7 130.0	GND 121.95	ATIS 126.45
VOR/DME 116.3 NGB FAT 124° DTNR Elev 12 AD Elev 13 TL 118 TA 1		



nm	15	14	13	12	11	10	9	8	7	6	5	4	3	2	1	0
ACFT	VOR+DME		Circling ^a		^a Southwest of AD.											
A			690 (676) 1.5km													
B	430 (414)		690 (676) 1.6km													
C	1200m		1370 (1349) 2.4km													
D			2240 (2218) 3.6km													
GS	80	100	120	140	160											
ROD 3.3°	470	590	700	820	930											
FAF-MAPt	6:31	5:13	4:20	3:43	3:15											
DME NGB	10	8	6	5	4	3	2	1.8								
3.3° ALT	3290	2600	1900	1550	1210	860	510	430								
LDA 3050x45 10006x147ft P 3°																

© Navtech - zsnb03iaip00

50 - 3

FALS

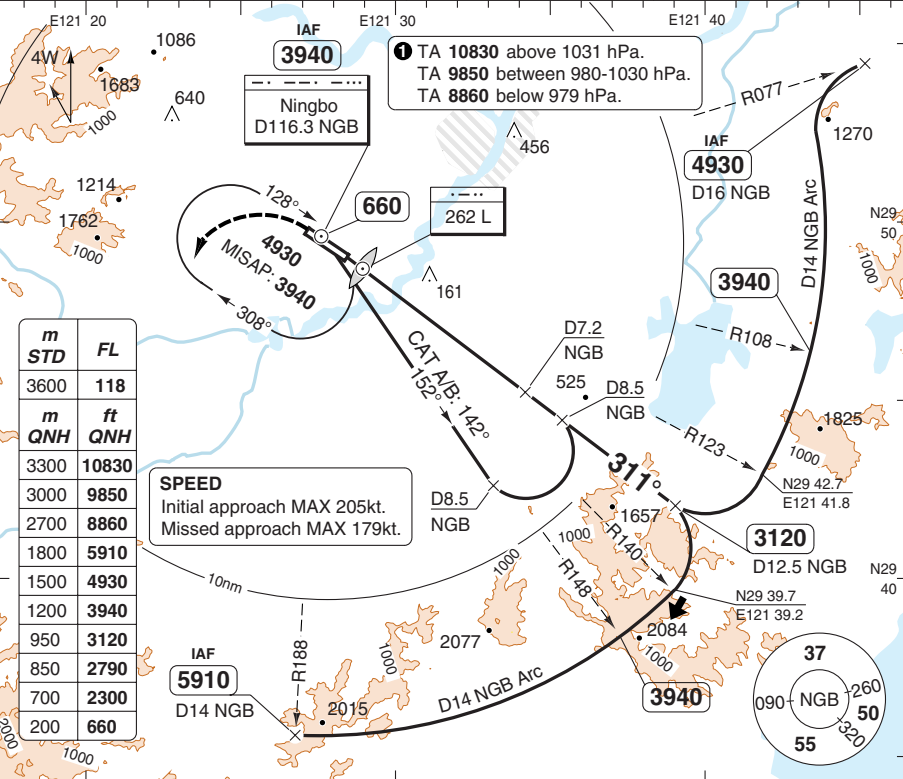
Change: New spec.

THIS CHART IS A PART OF NAVIGRAPH NDAC AND IS INTENDED FOR FLIGHT SIMULATION USE ONLY

VOR RWY 31 VOR/DME

Ningbo TWR	GND	ATIS
118.35 118.7	121.95	126.45
130.0		

VOR/DME 116.3 NGB	FAT 311°	THR Elev 12	AD Elev 13	TL 118	TA 1
-------------------	----------	-------------	------------	--------	------

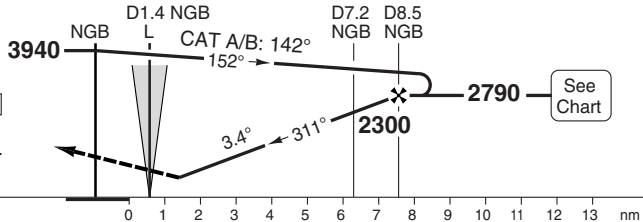


PANS OPS

50 - 4

MAPt L / D1.4 NGB

Climb on 311° to NGB MNM 660, turn left and join NGB HP, continue climbing to 3940, contact ATC. (MAX 179kt).



ACFT	VOR+DME	Circling ⓐ	ⓐ Southwest of AD.																											
A	430 (414) 1200m	690 (676) 1.5km	<table border="1"> <tr> <td>DME</td> <td>3.4°</td> <td>LDA 3200x45</td> </tr> <tr> <td>NGB</td> <td>ALT</td> <td>10498x147ft</td> </tr> <tr> <td>8.5</td> <td>2790</td> <td>P 3°</td> </tr> <tr> <td>8</td> <td>2260</td> <td></td> </tr> <tr> <td>7</td> <td>1900</td> <td></td> </tr> <tr> <td>5</td> <td>1540</td> <td></td> </tr> <tr> <td>4</td> <td>1180</td> <td></td> </tr> <tr> <td>3</td> <td>820</td> <td></td> </tr> <tr> <td>1.9</td> <td>430</td> <td></td> </tr> </table>	DME	3.4°	LDA 3200x45	NGB	ALT	10498x147ft	8.5	2790	P 3°	8	2260		7	1900		5	1540		4	1180		3	820		1.9	430	
DME		3.4°		LDA 3200x45																										
NGB		ALT		10498x147ft																										
8.5		2790		P 3°																										
8	2260																													
7	1900																													
5	1540																													
4	1180																													
3	820																													
1.9	430																													
B	690 (676) 1.6km																													
C	1370 (1349) 2.4km																													
D	2240 (2218) 3.6km																													

GS	80	100	120	140	160
ROD 3.4°	480	600	720	840	960
FAF-MAPt	5:18	4:14	3:32	3:02	2:39

© Navtech - zsnb04iap00

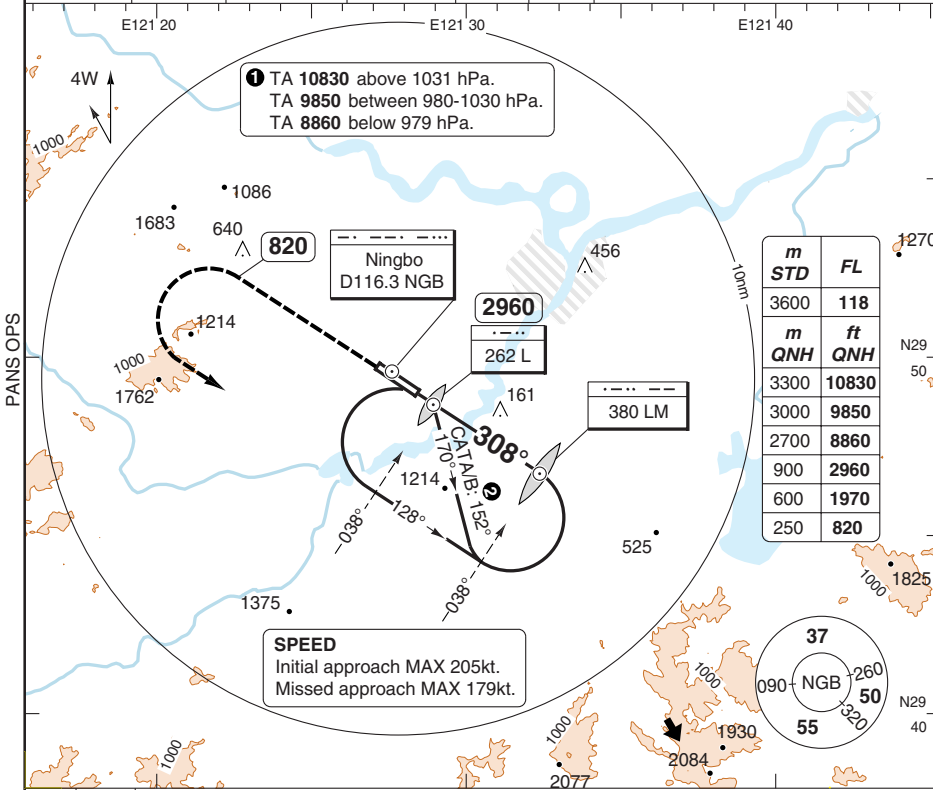
FALS

Change: New spec.

NDB RWY 31

Ningbo TWR	GND	ATIS
118.35 118.7	121.95	126.45
130.0		

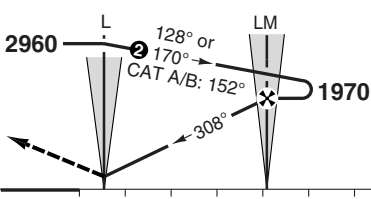
NDB 262 L	FAT 308°	THR Elev 12	AD Elev 13	TL 118	TA ①
-----------	----------	-------------	------------	--------	------



50 - 5

MAPt L / MM

Climb on 308° to 820, turn left climbing to 1970 and join racetrack abeam L. (MAX 179kt).



② CAT C/D: 1min
CAT A/B: 1min 30sec

ACFT	NDB Circling a	a Southwest of AD.
A	690 (676) 1.5km	
B	690 (676) 1.6km	
C	1370 (1349) 2.4km	
D	2240 (2218) 3.6km	

LDA 3200x45
10498x147ft
P 3°



FALS

Reverse side blank

JAR-OPS Landing Minima

Lishe **NINGBO**

The following Minima is for Public Transport aircraft and conforms to JAR-OPS1 regulations.

STRAIGHT-IN APPROACH		C				D			
R/W	Procedure	DA/ MDA QNH ft	DH/ MDH QFE ft	RVR m	RVR No ALS m	DA/ MDA QNH ft	DH/ MDH QFE ft	RVR m	RVR No ALS m
13	ILS/DME	230	220	600	1000	250	230	600	1000
13	LOC/DME	430	420	1000	1800	430	420	1400	2000
13	VOR/DME	430	420	1000	1800	430	420	1400	2000
31	ILS/DME	230	220	600	1000	250	230	600	1000
31	LOC/DME	430	420	1000	1800	430	420	1400	2000
31	VOR/DME	430	420	1000	1800	430	420	1400	2000

Notes:

CIRCLING		C			D		
R/W	Procedure	MDA QNH ft	MDH QFE ft	Vis m	MDA QNH ft	MDH QFE ft	Vis m
31	CIRC NDB (1)	1370	1350	2400	2240	2220	3600
	All other procs (1)	1370	1350	2400	2240	2220	3600

Notes:

(1) South-west of runway only.

TAKE-OFF		C		D	
Runway	Facilities	RVR	Vis	RVR	Vis
13/31 (1)(2)	REDL	400	800	400	800
13/31 (1)(2)	Nil (Day only)	500	800	500	800
13/31 (1)(3)	REDL or Nil (Day only)	-	1600	-	1600

Notes:

- (1) With reliable alternate.
- (2) 2 turbine engines or 3 & 4 engine aircraft.
- (3) Other aircraft.

JAR-OPS Landing Minima

Lishe **NINGBO**

The following Minima is for Public Transport aircraft and conforms to JAR-OPS1 regulations.

STRAIGHT-IN APPROACH		A				B			
R/W	Procedure	DA/ MDA QNH ft	DH/ MDH QFE ft	RVR m	RVR No ALS m	DA/ MDA QNH ft	DH/ MDH QFE ft	RVR m	RVR No ALS m
13	ILS/DME	230	220	600	1000	230	220	600	1000
13	LOC/DME	430	420	900	1500	430	420	1000	1500
13	VOR/DME	430	420	900	1500	430	420	1000	1500
31	ILS/DME	220	200	550	1000	220	200	550	1000
31	LOC/DME	430	420	900	1500	430	420	1000	1500
31	VOR/DME	430	420	900	1500	430	420	1000	1500

Notes:

CIRCLING		A			B		
R/W	Procedure	MDA QNH ft	MDH QFE ft	Vis m	MDA QNH ft	MDH QFE ft	Vis m
31	CIRC NDB (1)	690	680	1500	690	680	1600
	All other procs (1)	690	680	1500	690	680	1600

Notes:

(1) South-west of runway only.

TAKE-OFF		A		B	
Runway	Facilities	RVR	Vis	RVR	Vis
13/31 (1)(2)	REDL	400	800	400	800
13/31 (1)(2)	Nil (Day only)	500	800	500	800
13/31 (1)(3)	REDL or Nil (Day only)	-	1600	-	1600

Notes:

- (1) With reliable alternate.
- (2) 2 turbine engines or 3 & 4 engine aircraft.
- (3) Other aircraft.