

# ZLLL

---

## Airport information:

Country: China

City: LANZHOU

Coordinates: N 36° 31.0', E103 37.0

Elevation: 6388

Customs: CustomsCustoms

Fuel: Jet

RFF: CAT 7

hours: PPR, HS or O/R

## Runways:

Runway 18

Takeoff length: 3600, Landing length: 3600

Runway 36

Takeoff length: 3600, Landing length: 3600

# AERODROME

Lanzhou TWR  
118.1  
130.0

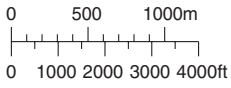
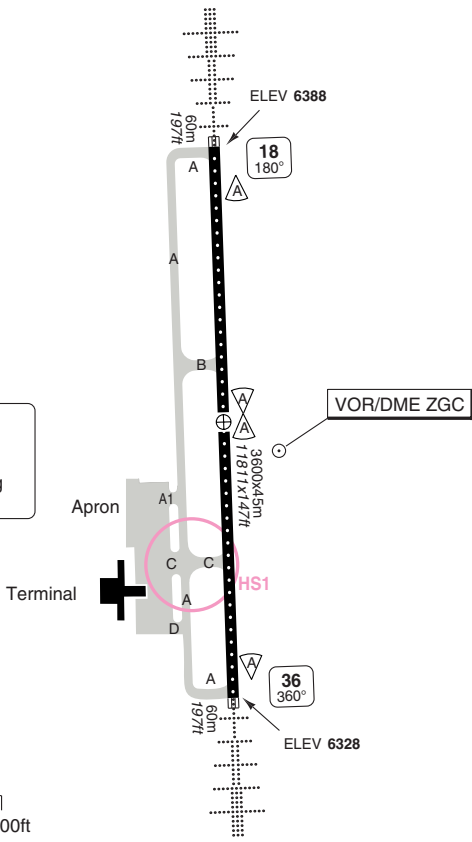
ATIS  
128.45

AD Elev **6388** ARP: N36 31.0 E103 37.3 RFF: CAT 7 AD HR: HS or O/R



**HOT SPOT**

HS1  
ACFT proceed with caution and shall give way to ACFT vacating RWY via TWY C.



RWY	Slope	TORA m/ft	LDA m/ft	ALS	REDL	RCLL	Additional
18	- 0.5	3600 / 11811	3600 / 11811	H-C	H	30m	P 3°
36	+0.5	3600 / 11811	3600 / 11811	H-C	H	30m	P 3°

**STATE TAKE OFF MINIMA**

RWY	Facilities	With TKOF ALT AD	Without TKOF ALT AD
		RVR	
18/36 <b>a</b>	REDL	400m	NA
	Nil (day only)	500m	

**a** 2 ENG or 3 & 4 ENG.

© Navtech - zlll01laorg0

Change: New spec.

**THIS CHART IS A PART OF NAVIGRAPH NDAC AND IS INTENDED FOR FLIGHT SIMULATION USE ONLY**

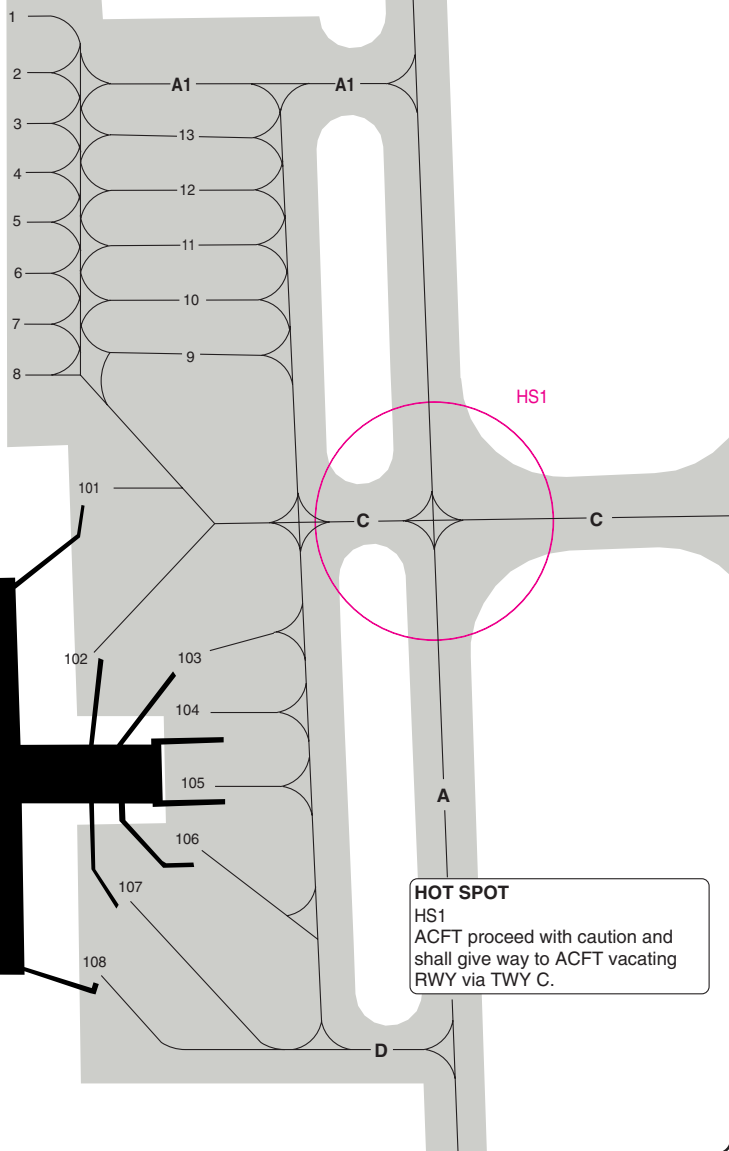
# AERODROME Parking

## Zhongchuan LANZHOU

10 - 2

Lanzhou TWR 118.1 130.0	ATIS 128.45			
-------------------------------	----------------	--	--	--

AD Elev 6388	ARP: N36 31.0 E103 37.3	RFF: CAT 7	AD HR: HS + O/R	
--------------	-------------------------	------------	-----------------	--



HS1

**HOT SPOT**  
 HS1  
 ACFT proceed with caution and shall give way to ACFT vacating RWY via TWY C.

© Navtech - zlll02laorg0

Change: New spec.

**THIS CHART IS A PART OF NAVIGRAPH NDAC AND IS INTENDED FOR FLIGHT SIMULATION USE ONLY**

## GENERAL

Zhongchuan LANZHOU

## GENERAL

## 1. WARNING

- 1.1 Do not mistake the airport road lights for runway lights.
- 1.2 Bird hazard.

## 2. ALTIMETER SETTING

TA 4500m/14770ft above 1031 hPa.  
 TA 4200m/13780ft between 980-1030 hPa.  
 TA 3900m/12800ft below 979 hPa.

## 3. CIRCUITS

Traffic circuits to be made both sides of runway.

Circuit ALT:

Cat C/D: 2450m/8040ft

Cat A/B: 2350m/7710ft

## 4. TAXIWAY RESTRICTIONS

Follow me vehicle service and towing service are available via Tower.

## 5. FUEL DUMPING AREA

N37 28.0 E103 25.0  
 N37 28.0 E103 44.0  
 N36 40.0 E103 41.0  
 N36 44.0 E103 15.0  
 N37 28.0 E103 25.0  
 Above 6000m/19690ft

## ARRIVAL

## 1. PARKING

Wingspan limits for aircraft parking on stands:

102, 108	64.9m/213ft
106, 1, 3, 10, 12, 13	47.6m/156ft
101,107	44.8m/147ft
103, 104, 105, 2, 4-8	34.3m/113ft
9, 11	33.9m/111ft

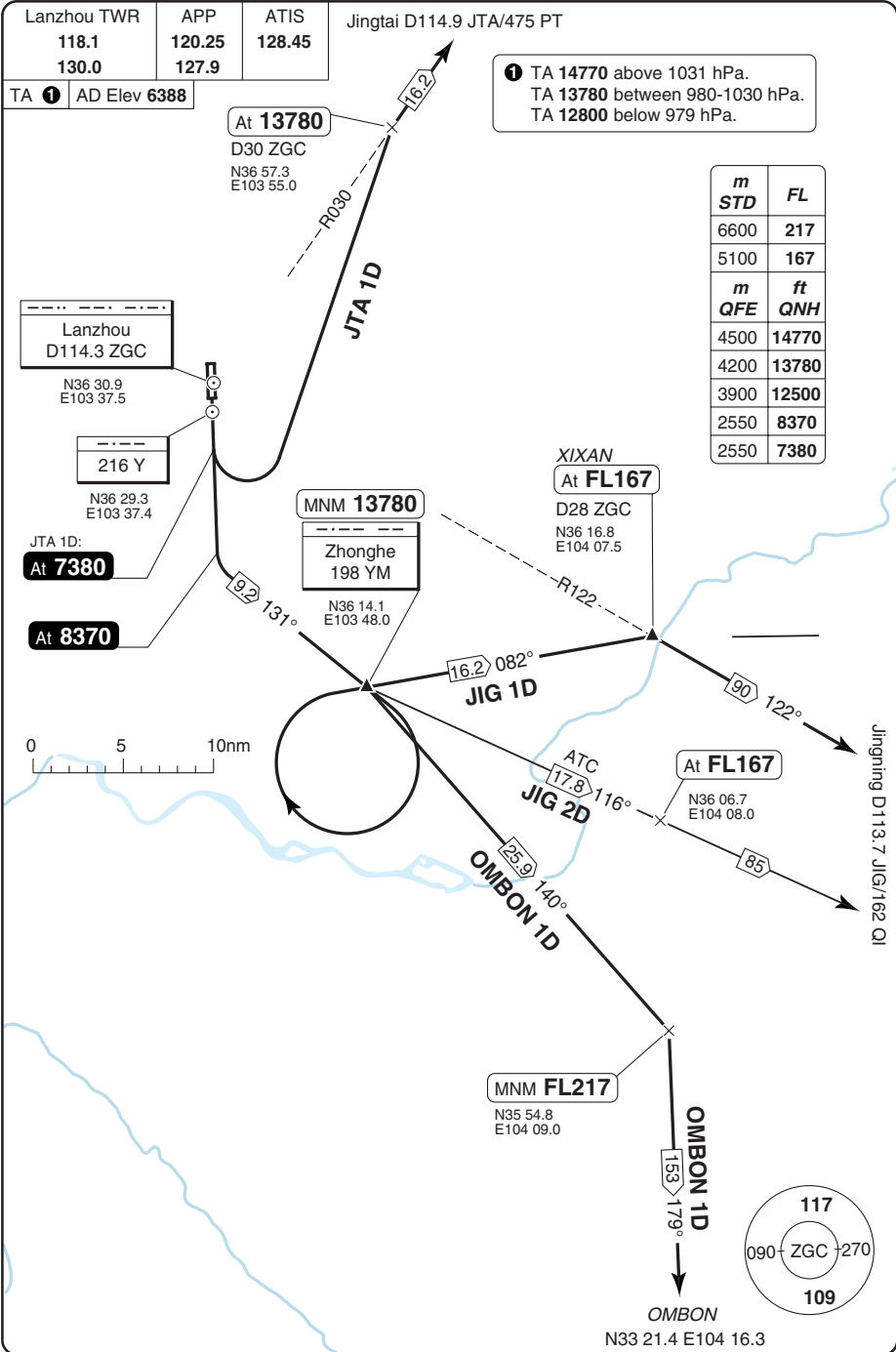
## DEPARTURE

## 1. ENGINE RUN-UPS

Engine run-ups are subject to Tower clearance, and shall be carried out at a designated location. Fast engine run-ups on apron are strictly forbidden.

10 - 3

SID RWY 18



# SID RWY 36

Lanzhou TWR	APP	ATIS
118.1	120.25	128.45
130.0	127.9	

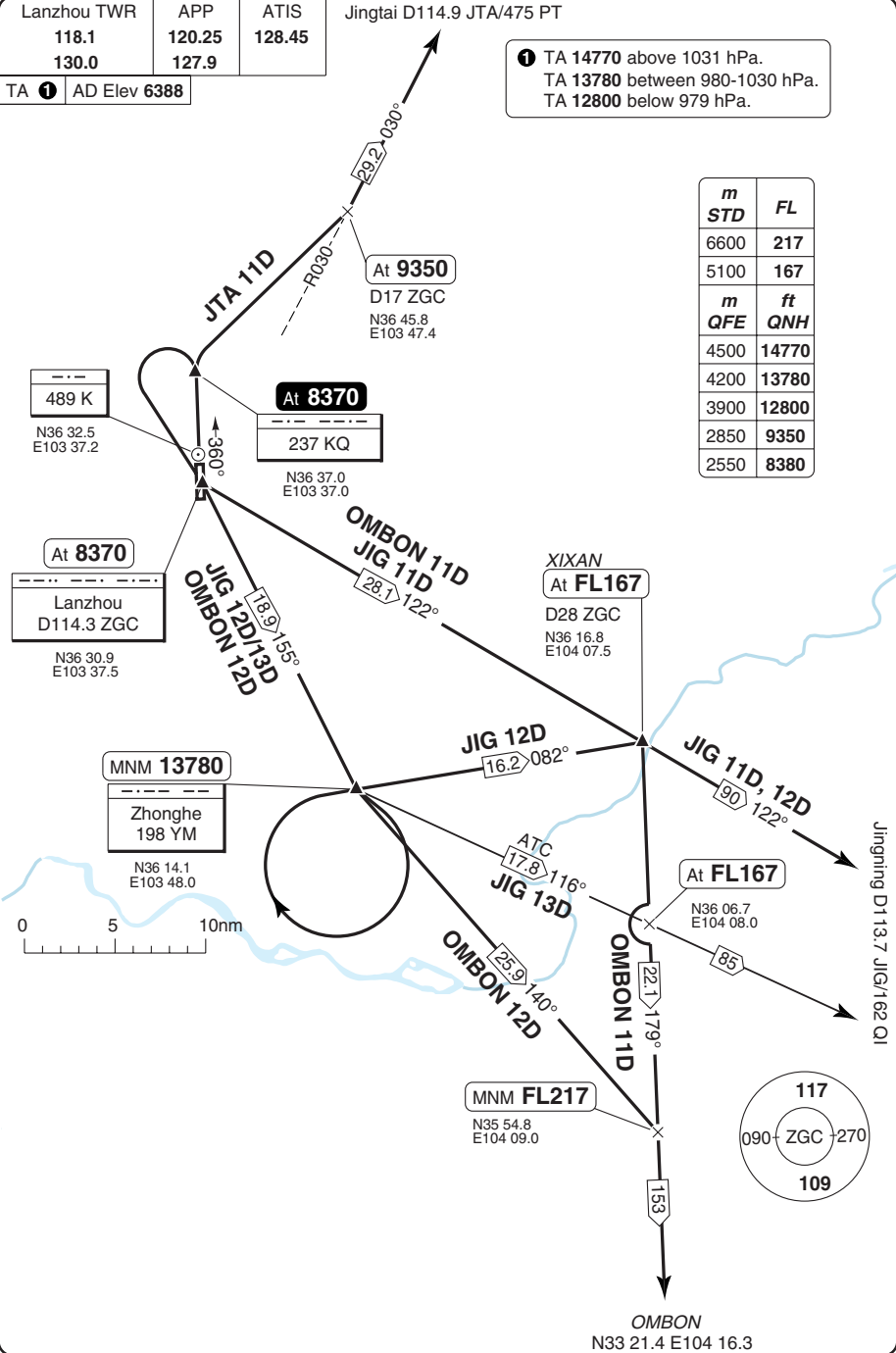
Jingtai D114.9 JTA/475 PT

TA ① AD Elev 6388

① TA 14770 above 1031 hPa.  
 TA 13780 between 980-1030 hPa.  
 TA 12800 below 979 hPa.

m	FL
6600	217
5100	167
m	ft
QFE	QNH
4500	14770
4200	13780
3900	12800
2850	9350
2550	8380

30 - 2



© Navitech - I11102daorg0

Change: New spec.

**THIS CHART IS A PART OF NAVIGRAPH NDAC AND IS INTENDED FOR FLIGHT SIMULATION USE ONLY**

# STAR RWY 18

Zhongchuan **LANZHOU**

Lanzhou TWR	APP	ATIS
118.1	120.25	128.45
130.0	127.9	
TL 157	AD Elev 6388	

Jingtai D114.9 JTA/475 PT  
**At FL157**  
 D30 ZGC  
 N36 57.3  
 E103 55.0

IAF  
**At 10340**  
 D17 ZGC  
 N36 45.8  
 E103 47.4

m	STD	FL
6600	217	
5400	177	
4800	157	
m	QFE	ft
3600	11810	
3150	10340	
2850	9350	

**At 9350**  
 D11.3 ZGC

IAF  
**At 10340**  
 237 KQ  
 N36 37.0  
 E103 37.0

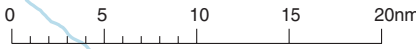
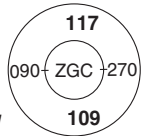
IAF  
**At 10340**  
 Lanzhou  
 D114.3 ZGC  
 N36 30.9  
 E103 37.5

Zhonghe  
 198 YM  
 N36 14.1  
 E103 48.0

XIXAN  
**At FL177**  
 D28 ZGC  
 N36 16.8  
 E104 07.5

**At FL177**  
 N36 06.7  
 E104 08.0

MNM **FL217**  
 N35 54.8  
 E104 09.0



© Navitech - zlll01aaorg0

40 - 1

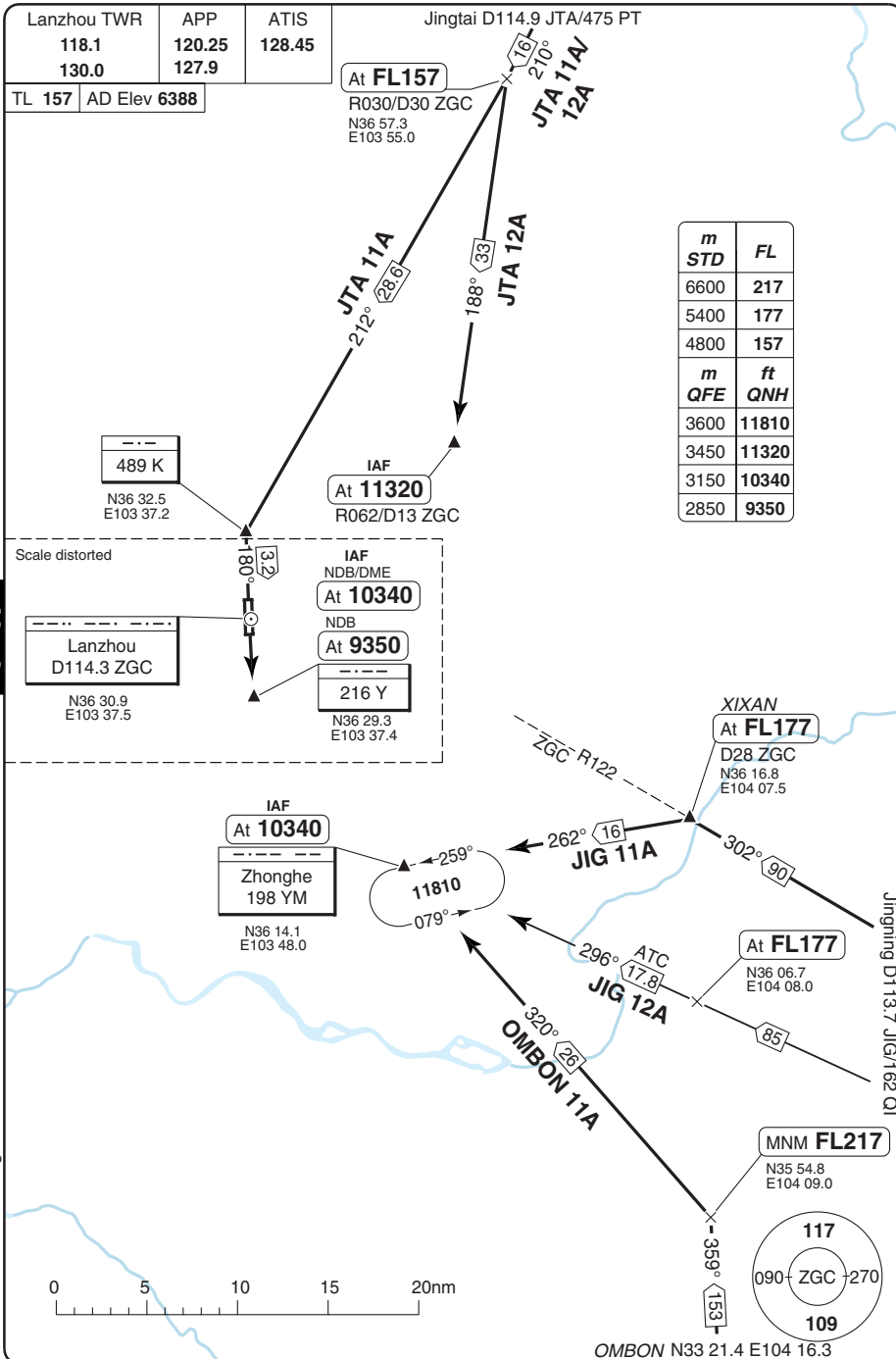
Jingming D113.7 JIG/162 QI

Change: New spec.

**THIS CHART IS A PART OF NAVIGRAPH NDAC AND IS INTENDED FOR FLIGHT SIMULATION USE ONLY**

# STAR RWY 36

Zhongchuan **LANZHOU**



40 - 2

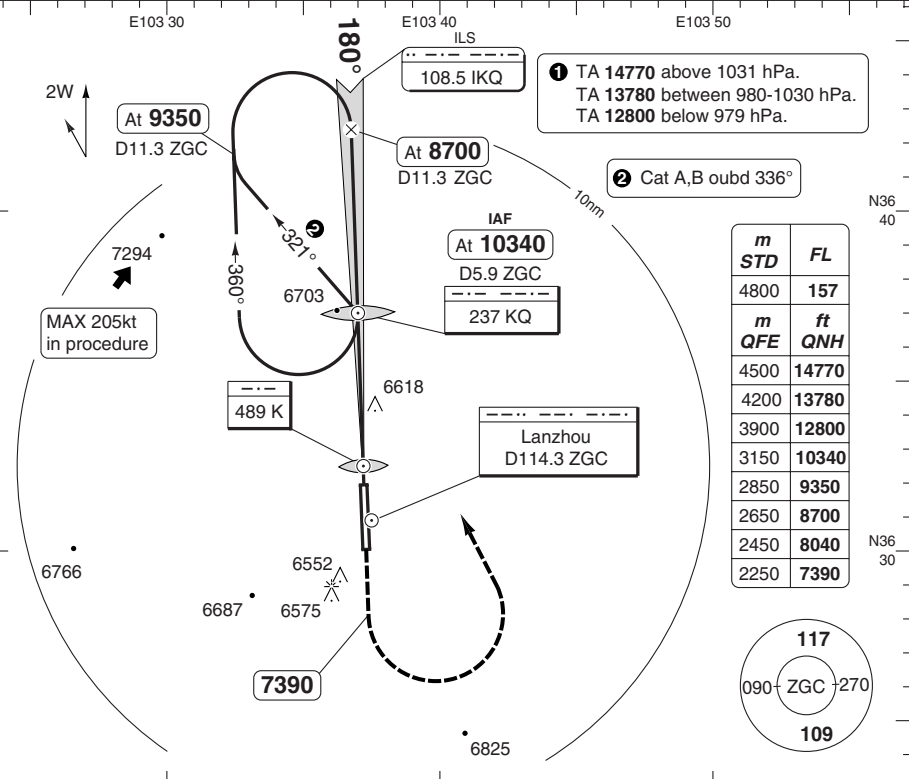
Change: New spec.

**THIS CHART IS A PART OF NAVIGRAPH NDAC AND IS INTENDED FOR FLIGHT SIMULATION USE ONLY**

ILS RWY 18

Lanzhou TWR	APP	ATIS
118.1	120.25	128.45
130.0	127.9	

ILS 108.5 IKQ	FAT 180°	THR Elev 6388	AD Elev 6388	TL 157	TA ①
---------------	----------	---------------	--------------	--------	------



PANS OPS

2W ↑

At 9350

D11.3 ZGC

108.5 IKQ

At 8700

D11.3 ZGC

IAF

At 10340

D5.9 ZGC

237 KQ

MAX 205kt in procedure

At 9350

D11.3 ZGC

489 K

Lanzhou

D114.3 ZGC

6766

7294

6687

6575

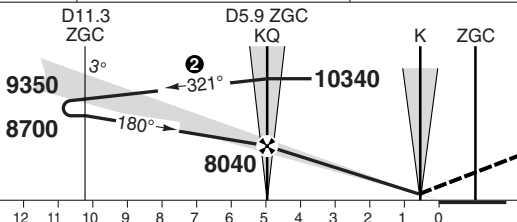
6552

7390

6618

6825

MAPt MM / K



nm 14 13 12 11 10 9 8 7 6 5 4 3 2 1 0 TCH 49

ACFT	ILS+DME	LOC+DME	Circling ③		
A			7150 (762)		
B	6590 (200)	6870 (476)	1.5km		
C	550m	1500m	7150 (762)		
D			1.6km		
			7250 (860)		
			2.4km		
			7250 (860)		
			3.6km		
GS	80	100	120	140	160
ROD 3.1°	450	560	670	780	890
FAF-MAPt	3:22	2:41	2:14	1:55	1:41

③ East of RWY only

DME ZGC	3.1° ALT	LDA 3600x45
7.9	8700	11811x148ft
7	8410	P 3°
6	8080	
5	7750	
4	7410	
3	7080	
2.4	6870	

50 - 1

© Navtech - zlll01aiip00

FALS

Change: New spec.

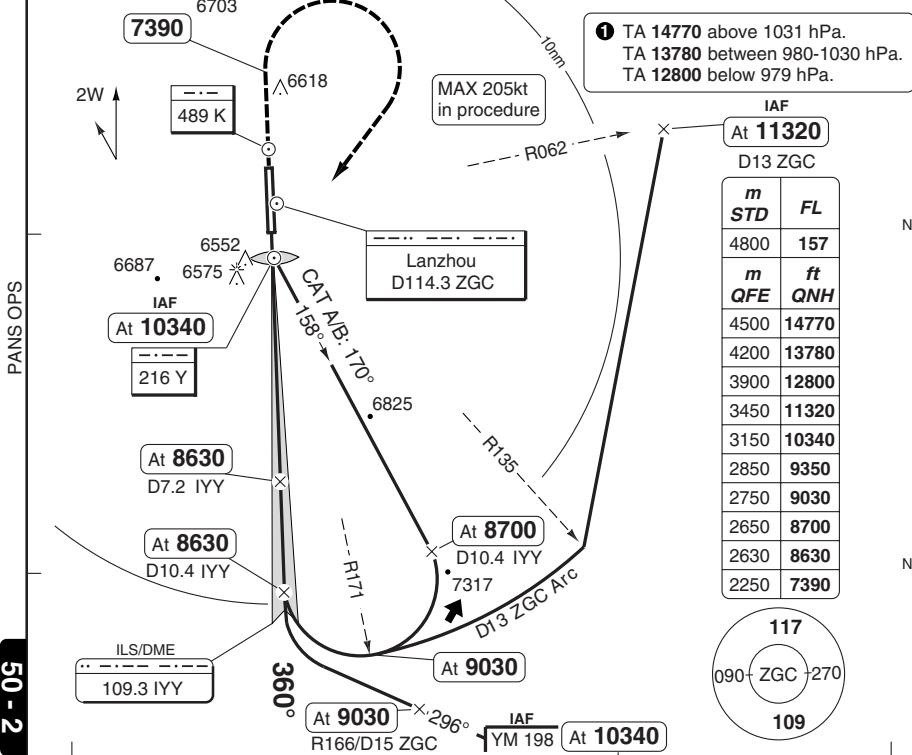
THIS CHART IS A PART OF NAVIGRAPH NDAC AND IS INTENDED FOR FLIGHT SIMULATION USE ONLY

# ILS RWY 36

Lanzhou TWR	APP	ATIS
118.1	120.25	128.45
130.0	127.9	

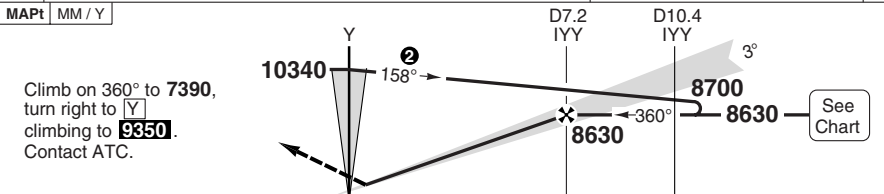
ILS/DME 109.3 IYY	FAT 360°	THR Elev 6328	AD Elev 6388	TL 157	TA ①
-------------------	----------	---------------	--------------	--------	------

E103 30      6703      E103 40      E103 50      E104 00



PANS OPS

50 - 2



TCH 49      0      1      2      3      4      5      6      7      8      9      10      11      12      13      14      15      16 nm

ACFT	ILS	LOC+DME	Circling <sup>a</sup>
A			7150 (762) 1.5km
B	6530 (200)	6760 (427)	7150 (762) 1.6km
C	550m	1300m	7250 (860) 2.4km
D			7250 (860) 3.6km

<sup>a</sup> East of RWY only

DME IYY	3.0° ALT	LDA 3600x45 11811x148ft
7.2	8630	
6	8250	
5	7930	
4	7610	
3	7290	
2	6970	
1.4	6760	



GS	80	100	120	140	160
ROD 3.0°	430	540	640	750	860

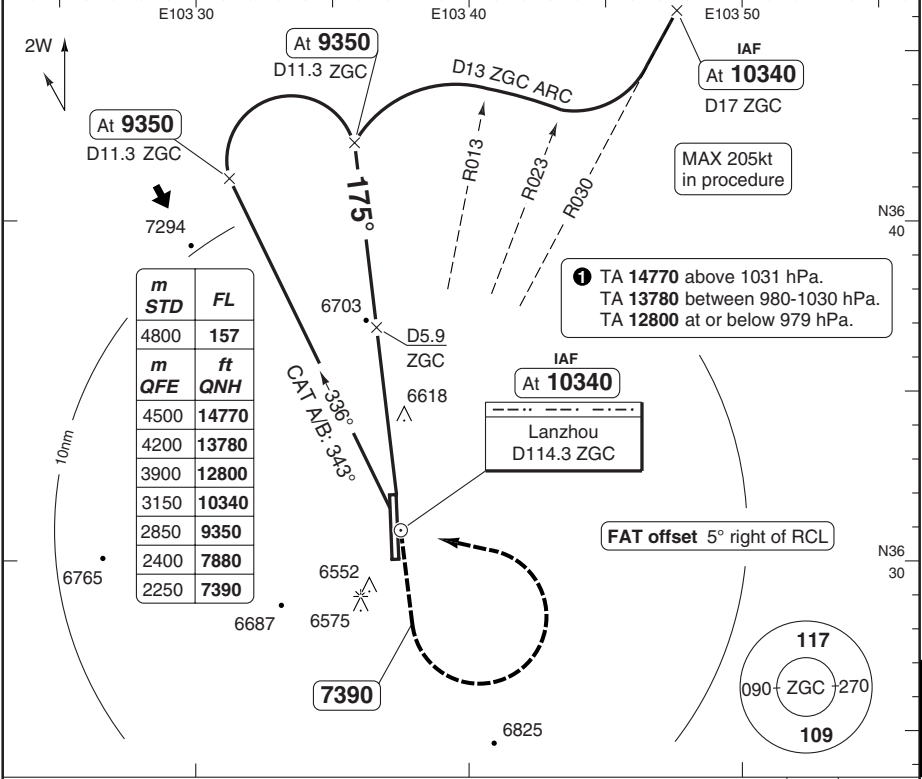
© Navtech - zlll02iaip00

# VOR RWY 18

Zhongchuan **LANZHOU**

Lanzhou TWR <b>118.1</b> <b>130.0</b>	APP <b>120.25</b> <b>127.9</b>	ATIS <b>128.45</b>
---	--------------------------------------	-----------------------

VOR/DME <b>114.3 ZGC</b>	FAT <b>175°</b>	THR Elev <b>6388</b>	AD Elev <b>6388</b>	TL <b>157</b>	TA <b>1</b>
--------------------------	-----------------	----------------------	---------------------	---------------	-------------



m	STD	FL
4800		157
m	QFE	ft
4500		14770
4200		13780
3900		12800
3150		10340
2850		9350
2400		7880
2250		7390

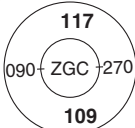
PANS OPS

10nm

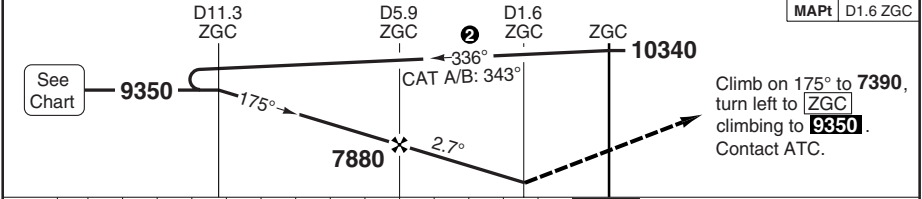
1 TA 14770 above 1031 hPa.  
TA 13780 between 980-1030 hPa.  
TA 12800 at or below 979 hPa.

IAF  
At **10340**  
Lanzhou  
D114.3 ZGC

FAT offset 5° right of RCL



50 - 3



nm	14	13	12	11	10	9	8	7	6	5	4	3	2	1	0
----	----	----	----	----	----	---	---	---	---	---	---	---	---	---	---

ACFT	VOR+DME	Circling <b>a</b>	<b>a</b> East of RWY only				DME ZGC	2.8° ALT	LDA 3600x45 11811x148ft P 3°
A	6890 (499) 1500m	7150 (762) 1.5km	140	120	100	80	10.8	9350	
B		7150 (762) 1.6km	140	120	100	80	8	8510	
C		7250 (860) 2.4km	160	140	120	100	7	8210	
D		7250 (860) 3.6km	160	140	120	100	6	7910	
GS	80	100	120	140	160	5	7610		
ROD 2.8°	400	500	600	700	800	4	7320		
FAF-MAPt	3:22	2:41	2:14	1:55	1:41	3	7020		
						2.6	6890		

© Navtech - zlll03iaip00

FALS

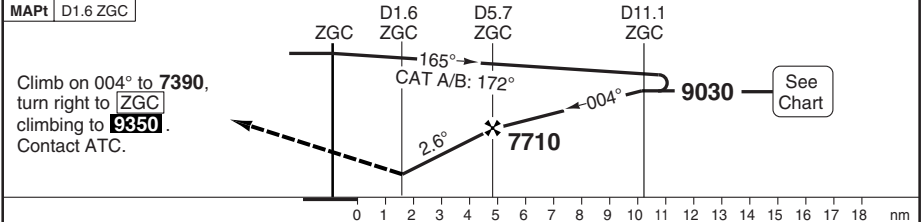
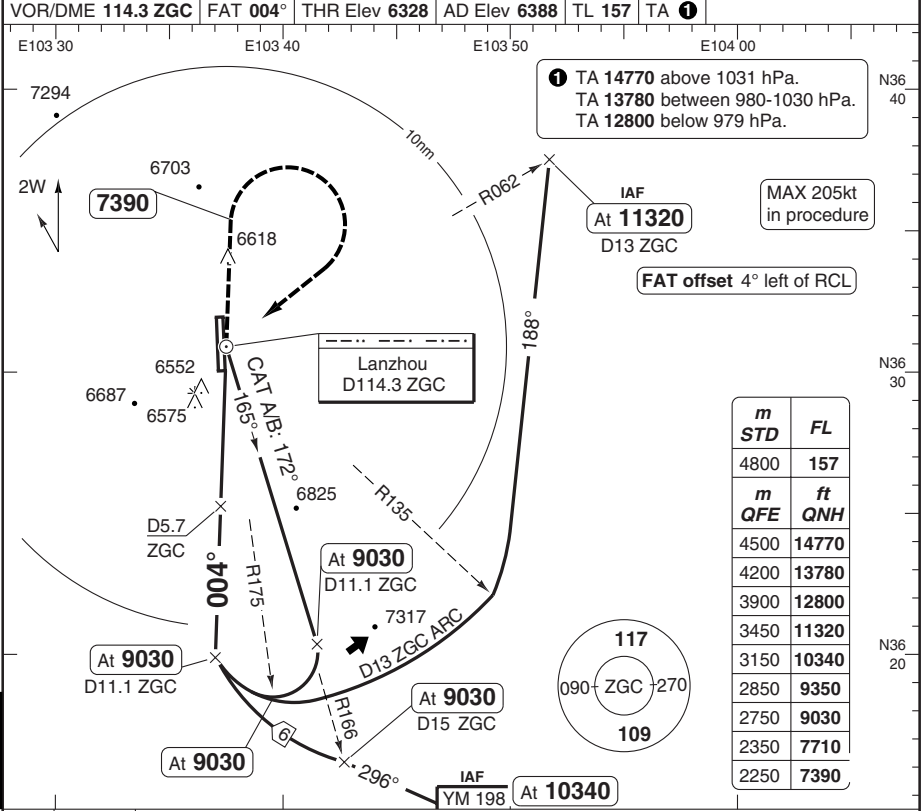
Change: New spec.

**THIS CHART IS A PART OF NAVIGRAPH NDAC AND IS INTENDED FOR FLIGHT SIMULATION USE ONLY**

# VOR RWY 36

Zhongchuan **LANZHOU**

Lanzhou TWR <b>118.1</b> 130.0	APP <b>120.25</b> 127.9	ATIS <b>128.45</b>
VOR/DME <b>114.3 ZGC</b>	FAT <b>004°</b>	THR Elev <b>6328</b>
AD Elev <b>6388</b>	TL <b>157</b>	TA <b>1</b>



ACFT	VOR+DME	Circling <b>a</b>	<b>a</b> East of RWY only	DME ZGC	2.6° ALT	LDA 3600x45 11811x148ft		
A	6820 (489) 1500m	7150 (762) 1.5km		10.5	9030			
B		7150 (762) 1.6km		8	8350			
C		7250 (860) 2.4km		7	8070			
D		7250 (860) 3.6km		6	7800			
GS	80	100	120	140	160		5	7520
ROD 2.6°	370	470	560	650	740		4	7250
FAF-MAPt	3:04	2:28	2:03	1:45	1:32	3	6970	
						2.5	6820	

© Navtech - zlll04iaip00 EU OPS

Change: New spec.

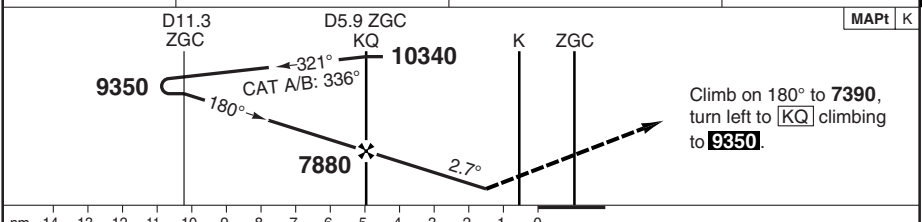
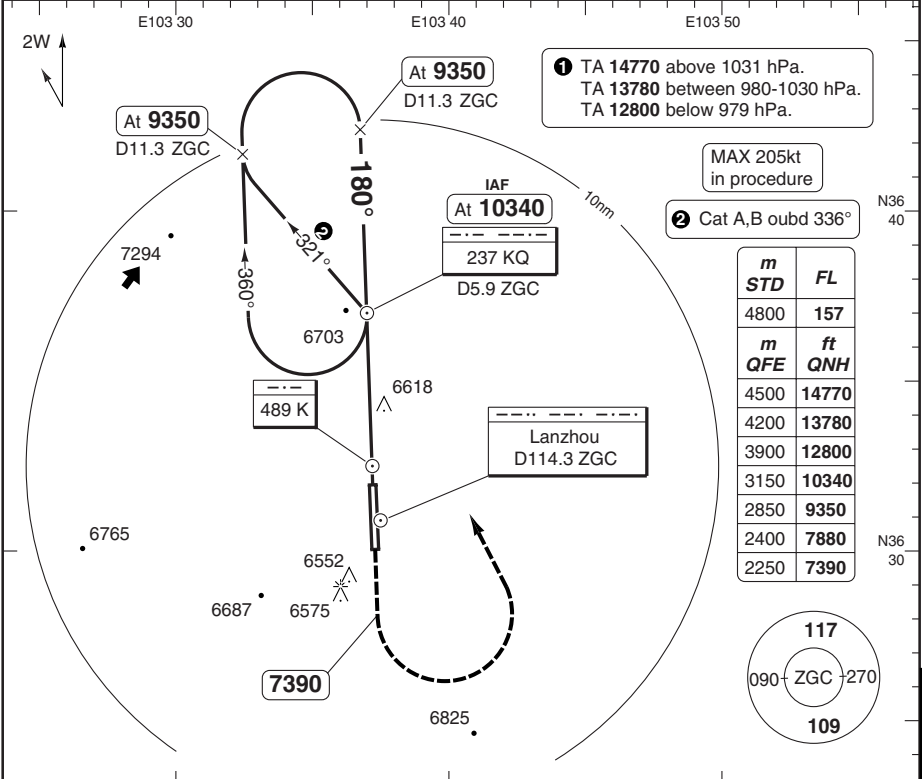
**THIS CHART IS A PART OF NAVIGRAPH NDAC AND IS INTENDED FOR FLIGHT SIMULATION USE ONLY**

# NDB RWY 18 NDB/DME

# Zhongchuan LANZHOU

Lanzhou TWR 118.1 130.0	APP 120.25 127.9	ATIS 128.45
-------------------------------	------------------------	----------------

NDB 489 K / 237 KQ	FAT 180°	THR Elev 6388	AD Elev 6388	TL 157	TA 1
--------------------	----------	---------------	--------------	--------	------



ACFT	NDB+DME	Circling <b>a</b>	<b>a</b> East of RWY only					DME ZGC	2.8° ALT	LDA 3600x45 11811x148ft P 3°
A	6890 (499) 1500m	7150 (762) 1.5km	140	120	100	80	10.8	9350		
B		7150 (762) 1.6km	140	120	100	80	8	8510		
C		7250 (860) 2.4km	140	120	100	80	7	8210		
D		7250 (860) 3.6km	140	120	100	80	6	7910		
GS	80	100	120	140	160	5	7610			
ROD 2.8°	400	500	600	700	800	4	7320			
FAF-MAPt	3:22	2:41	2:14	1:55	1:41	3	7020			
						2.6	6890	FALS		

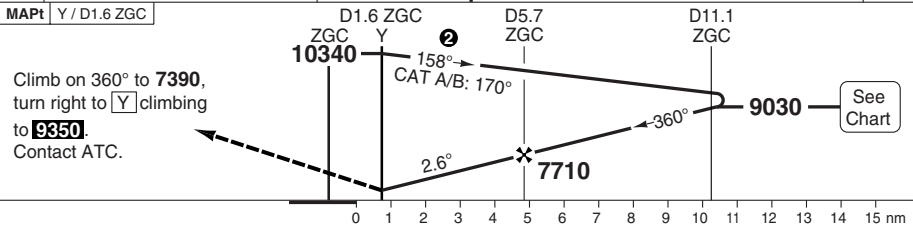
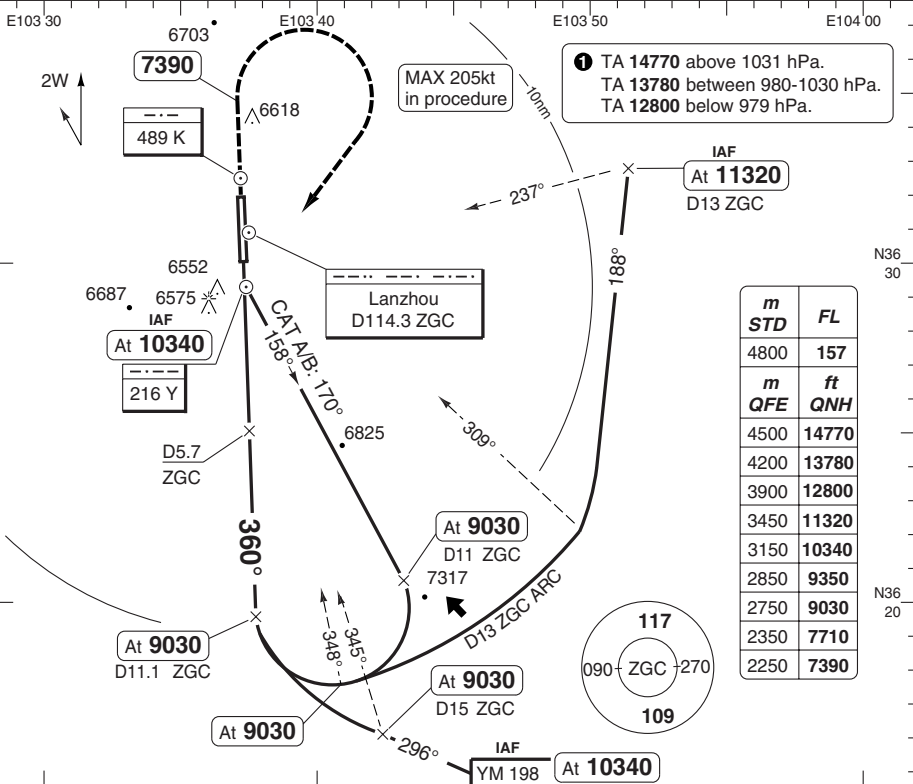
© Navtech - zlll05iaip00

50 - 5

NDB RWY 36 NDB/DME

Lanzhou TWR 118.1 130.0	APP 120.25 127.9	ATIS 128.45
-------------------------------	------------------------	----------------

NDB 216 Y	FAT 360°	THR Elev 6328	AD Elev 6388	TL 157	TA ①
-----------	----------	---------------	--------------	--------	------



ACFT	NDB+DME	Circling <b>a</b>	<b>a</b> East of RWY only					DME ZGC	2.6° ALT	LDA 3600x45 11811x148ft
A	6820 (489) 1500m	7150 (762) 1.5km	80	100	120	140	160	10.5	9030	 P 3° FALS
B		7150 (762) 1.6km	370	470	560	650	740	8	8350	
C		7250 (860) 2.4km	370	470	560	650	740	7	8070	
D		7250 (860) 3.6km	370	470	560	650	740	6	7800	
GS	80	100	120	140	160		5	7520		
ROD 2.6°	370	470	560	650	740		4	7250		
FAF-MAPt	3:04	2:28	2:03	1:45	1:32		3	6970		
							2.5	6820		

50 - 6

© Navtech - zlll06iaip00

Change: New spec.

THIS CHART IS A PART OF NAVIGRAPH NDAC AND IS INTENDED FOR FLIGHT SIMULATION USE ONLY

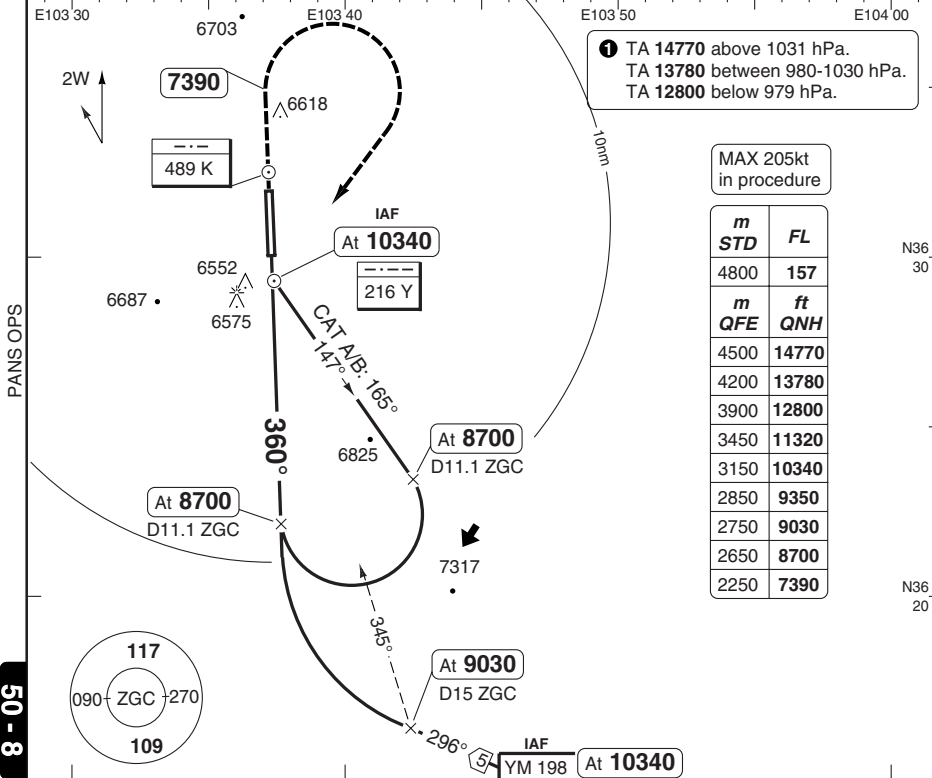


# NDB RWY 36

Lanzhou TWR 118.1 130.0	APP 120.25 127.9	ATIS 128.45
-------------------------------	------------------------	----------------

NDB 216 Y FAT 360° THR Elev 6328 AD Elev 6388 TL 157 TA ①

E103 30 6703 E103 40 E103 50 E104 00



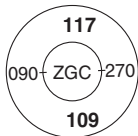
① TA 14770 above 1031 hPa.  
TA 13780 between 980-1030 hPa.  
TA 12800 below 979 hPa.

MAX 205kt  
in procedure

m	FL
4800	157
m	ft
4500	14770
4200	13780
3900	12800
3450	11320
3150	10340
2850	9350
2750	9030
2650	8700
2250	7390

PANS OPS

50 - 8



MAPt Y

Climb on 360° to 7350, turn right to [Y] climbing to 9350. Contact ATC.



0 1 2 3 4 5 6 7 8 9 10 11 12 13 14 15 nm

ACFT	NDB	NDB ②	Circling ③	Circling ③ b	③ East of RWY only ③ Non-CDFA.	LDA 3600x45 11810x147ft P 3°
A	7090 (758) 2700m	7090 (758) 2900m	7150 (762) 2.7km	7150 (762) 2.9km	③ East of RWY only ③ Non-CDFA.	
B				7150 (762) 2.9km		
C	7090 (758) 3100m	7090 (758) 3100m	7250 (860) 2.7km	7250 (860) 3.1km		
D				7250 (860) 3.6km		

© Navtech - zlll08iap00

Change: Minima.

## JAR-OPS Landing Minima

Zhongchuan **LANZHOU**

The following Minima is for Public Transport aircraft and conforms to JAR-OPS1 regulations.

STRAIGHT-IN APPROACH		C				D			
R/W	Procedure	DA/ MDA QNH ft	DH/ MDH QFE ft	RVR m	RVR No ALS m	DA/ MDA QNH ft	DH/ MDH QFE ft	RVR m	RVR No ALS m
18	ILS/DME	<b>6590</b>	200	700	1000	<b>6590</b>	200	700	1000
18	LOC/DME	<b>6870</b>	480	1600	2000	<b>6870</b>	480	1800	2000
18	VOR/DME	<b>6890</b>	500	1600	2000	<b>6890</b>	500	1800	2000
18	NDB/DME	<b>6890</b>	500	1600	2000	<b>6890</b>	500	1800	2000
18	NDB	<b>7050</b>	660	1800	2000	<b>7050</b>	660	2000	2000
36	ILS/DME	<b>6530</b>	200	550	1000	<b>6530</b>	200	550	1000
36	LOC/DME	<b>6760</b>	430	1000	1800	<b>6760</b>	430	1400	2000
36	VOR/DME	<b>6820</b>	490	1200	2000	<b>6820</b>	490	1600	2000
36	NDB/DME	<b>6820</b>	490	1200	2000	<b>6820</b>	490	1600	2000
36	NDB	<b>7090</b>	760	1400	2000	<b>7090</b>	760	1800	2000

Notes:

CIRCLING		C			D		
R/W	Procedure	MDA QNH ft	MDH QFE ft	Vis m	MDA QNH ft	MDH QFE ft	Vis m
All procedures (1)		<b>7250</b>	860	2400	<b>7250</b>	860	3600

Notes:

(1) East of RWY only.

TAKE-OFF		C		D	
Runway	Facilities	RVR	Vis	RVR	Vis
18/36 (1)(3)	REDL	400	-	400	-
18/36 (1)(3)	Nil (Day only)	500	-	500	-
18/36 (2)(3)	REDL or Nil (Day only)	-	1600	-	1600

Notes:

(1) 2 turbine eng or 3 &amp; 4 eng acft.

(2) Other acft.

(3) Alternate must be filed.

## JAR-OPS Landing Minima

Zhongchuan LANZHOU

The following Minima is for Public Transport aircraft and conforms to JAR-OPS1 regulations.

STRAIGHT-IN APPROACH		A				B			
R/W	Procedure	DA/ MDA QNH ft	DH/ MDH QFE ft	RVR m	RVR No ALS m	DA/ MDA QNH ft	DH/ MDH QFE ft	RVR m	RVR No ALS m
18	ILS/DME	6590	200	700	1000	6590	200	700	1000
18	LOC/DME	6870	480	1400	1500	6870	480	1500	1500
18	VOR/DME	6890	500	1400	1500	6890	500	1500	1500
18	NDB/DME	6890	500	1400	1500	6890	500	1500	1500
18	NDB	7050	660	1500	1500	7050	660	1500	1500
36	ILS/DME	6530	200	550	1000	6530	200	550	1000
36	LOC/DME	6760	430	900	1500	6760	430	1000	1500
36	VOR/DME	6820	490	1000	1500	6820	490	1200	1500
36	NDB/DME	6820	490	1000	1500	6820	490	1200	1500
36	NDB	7090	760	1200	1500	7090	760	1400	1500

Notes:

CIRCLING		A			B		
R/W	Procedure	MDA QNH ft	MDH QFE ft	Vis m	MDA QNH ft	MDH QFE ft	Vis m
All procedures (1)		7150	770	1500	7150	770	1600

Notes:

(1) East of RWY only.

TAKE-OFF		A		B	
Runway	Facilities	RVR	Vis	RVR	Vis
18/36 (1)(3)	REDL	400	-	400	-
18/36 (1)(3)	Nil (Day only)	500	-	500	-
18/36 (2)(3)	REDL or Nil (Day only)	-	1600	-	1600

Notes:

- (1) 2 turbine eng or 3 & 4 eng acft.
- (2) Other acft.
- (3) Alternate must be filed.