

ZHHH

Airport information:

Country: China

City: WUHAN

Coordinates: N 30° 47.0', E114 12.0

Elevation: 112

Customs: HO

Fuel: Jet

RFF: CAT 8

hours: H24

Runways:

Runway 04

Takeoff length: 3400, Landing length: 3400

Runway 22

Takeoff length: 3400, Landing length: 3400

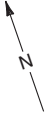
AERODROME

Parking South

10 - 2

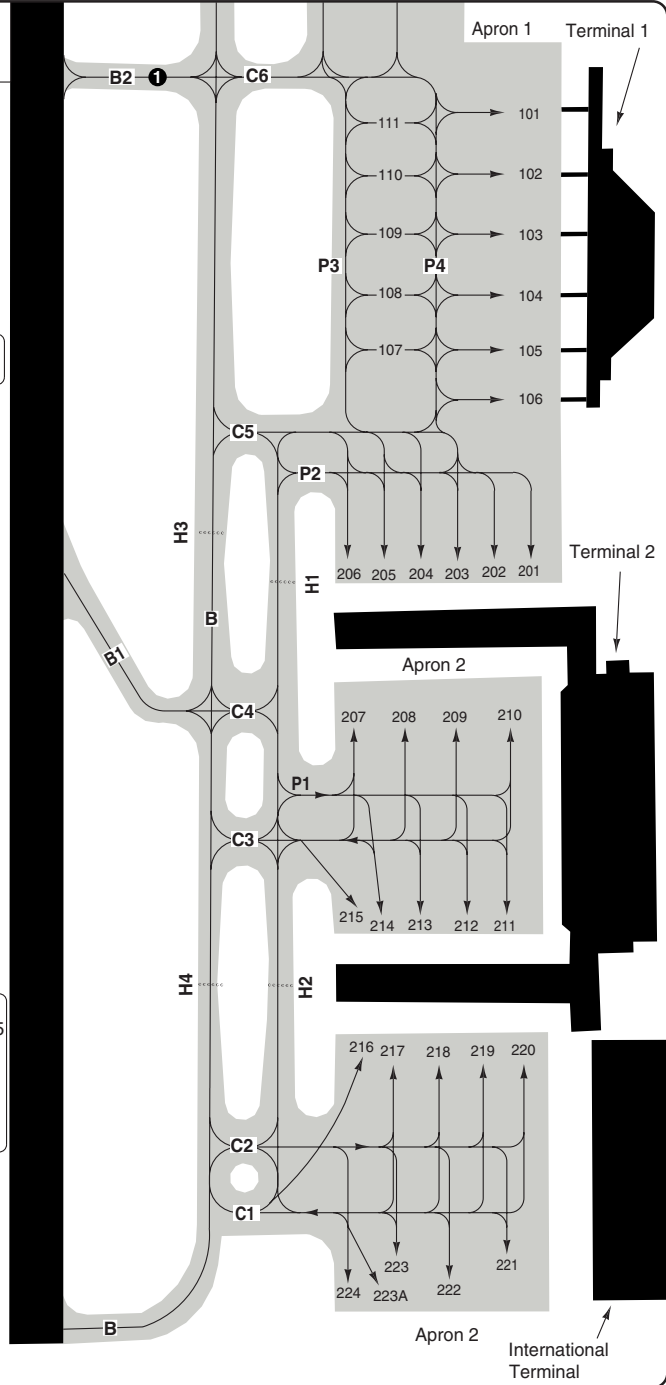
Tianhe DLV 121.8	Wuhan GND 121.65
---------------------	---------------------

TWR 124.35 118.1	ATIS 126.6
------------------------	---------------



❶ ACFT are strictly forbidden to enter RWY via TWY B2.

Note:
 All parking stands (except 215 - 216) can be used for engine idle test.
 Stand 106 is U/S.
 Stand 224 for ACFT cleaning.
 Stand 223A for Airbus A380.



© Navitech - zhh02laorg0

Change: New spec.

THIS CHART IS A PART OF NAVIGRAPH NDAC AND IS INTENDED FOR FLIGHT SIMULATION USE ONLY

GROUND Parking North

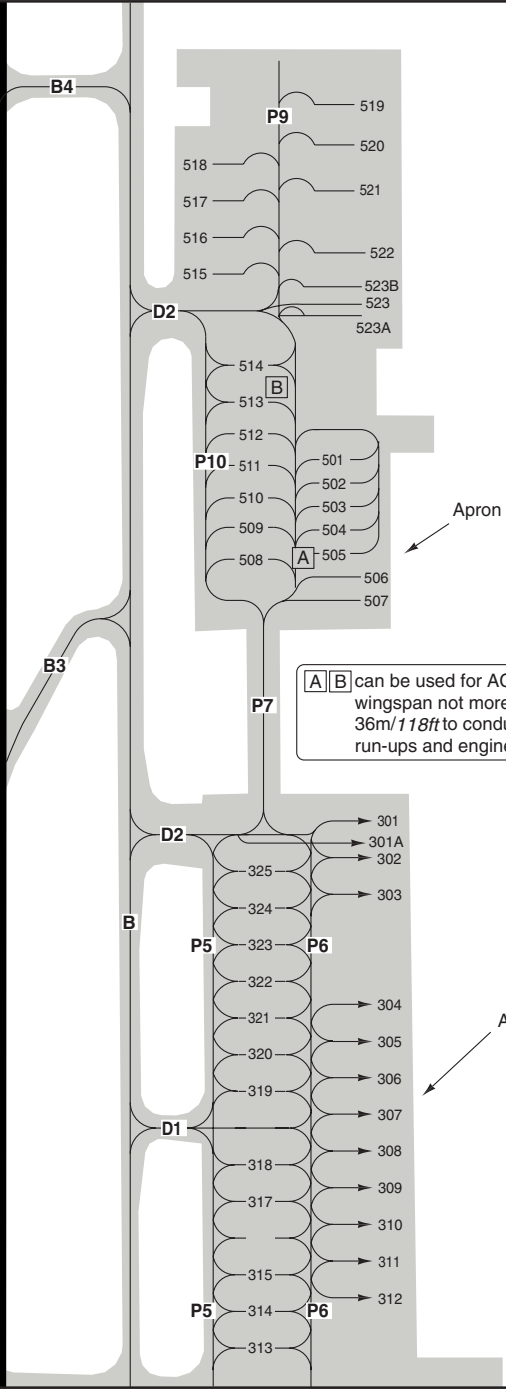
Tianhe DLV 121.8		Wuhan GND 121.65	
TWR 124.35 118.1	ATIS 126.6		



Note:
Stands 301A and 509
for isolated ACFT.

A for ACFT nose to south.
B for ACFT nose to north.

A **B** can be used for ACFT with
wingspan not more than
36m / 118ft to conduct engine
run-ups and engine idle test.



GENERAL

10 - 4

GENERAL

1. **AERODROME RESTRICTION**
 - 1.1 TKOF/LDG of ACFT without SSR transponder are forbidden.
 - 1.2 Test flights shall be filed in advance and conducted only after clearance has been obtained from ATC.

2. **ALTIMETER SETTING**
 - 2.1 TA **10830** at or above 1031 hPa
TA **9850** between 980-1030 hPa
TA **8860** at or below 979 hPa
 - 2.2 All clearances are given in metre QNH.

3. **CIRCUITS**
Traffic circuits shall be made to the northwest of RWY, at the altitudes of **1300-2300**.

4. **TAXIWAY RESTRICTION**
Follow-me vehicle service is available via Ground Control.

TWYs	Wingspan limits for ACFT
P9	65m/214ft
C1 (NE of BTN stand 221 and stand 223)	52m/171ft
D2	36m/118ft

5. **STANDS**
 - 5.1 Landing ACFT shall follow the guidance of follow-me vehicle into the parking stands.
 - 5.2 Aircraft parking/docking at Stands 101-105, 201-220, 301-312, 506-507, 515-523, 523A, 523B shall taxi in by itself and be pushed out by tow tractor. ACFT parking/docking at other stands shall be guided by a marshaller for entry/exit.
 - 5.3 Before engine run-ups, flight crew shall apply to TWR (121.65) clearance first, and then apply for AOC (121.9) clearance, engine run-ups shall be carried out at a designated location. Flight crew shall monitor TWR and AOC frequency during engine run-ups.

- 5.4 Limits of aircraft parking on following stands:

Stands	Wingspan limits
216, 521, 522, 523 (forbidden to be used simultaneously with stands Nr. 523A, 523B)	65m/214ft
224	60.3m/198ft
207-209, 215, 221-222	52m/171ft
210	48m/157ft
201-206, 211-214, 217-220, 223, 506-520, 523A, 523B	36m/118ft
501-505	20m/66ft

- 5.5 Aircraft need to be guided by follow-me vehicle and taxi through TWY P7 to apron 5.

- 5.6 Use of isolated parking stands

Stands for isolated ACFT	509 (nose to West)	301A
Wingspan limits for isolated ACFT	65m/214ft	79.8m/262ft (for Airbus A380)
Taxi In (ACFT wingspan BTN 36m/118ft & 65m/214ft)	Taxi via D4, then to P7 on its own power	-
Taxi Out (ACFT wingspan BTN 36m/118ft & 65m/214ft)	Turn right under marshaller instructions, taxi via P10, then to D4 on its own power.	

GENERAL

- 5.7 When Airbus A380 is parked at stand 223A, it is forbidden to use stands 223-224 and TWY C1. When Airbus A380 is parked at stand 301A, it is forbidden to use stands 301-303, 324-325 and part of TWY P6 (north of Nr. 324).
- 5.8 Ground Control Requirements
Aircraft parking at stands 207-224 shall apply for clearance from AOC (callsign: TIANHE, frequency: 121.9) before pushback. Pushback without AOC clearance is strictly forbidden.

10 - 5

Change: New spec.

Tianhe DLV 121.8	Wuhan GND 121.65	TWR 124.35 118.1	APP 121.2 119.15 AP01 126.3 125.6 AP02	ATIS 126.6
----------------------------	----------------------------	--------------------------------------	--	----------------------

TA 1 AD Elev 112

1 TA 10830 at or above 1031 hPa.
TA 9850 between 980-1030 hPa.
TA 8860 at or below 979 hPa.

2 CAT A: Enroute Alt.

CAT C, D
At **FL157**

CAT B
At **FL118** 2

Tianmen
D108.8 WTM
N30 38.3
E113 08.6

Hebaohu
274 DA
N30 41.9
E113 58.3

Tianhe
D112.2 WHA
N30 46.9
E114 12.2

990

WTM 9D

269° 43

HH057
N30 32.2
E113 25.1

HH052
N30 34.9
E114 14.4
MNM **9850**

CAT C, D
At **FL157**

CAT B
At **FL118** 2

Longkou
D115.8 LKO
N29 54.4
E113 41.5

LKO 9D

218° 49



Tianhe
254 HG
N30 55.5
E114 21.0

ZF 9D
352° 16.2
24.3 014

ZF 8D
044°
10.8

ZF 9D
044°

ZF 8D
044°

LKO 9D
208°
14

WTM 9D
142°

XSH 9D
142°

HH051
N30 47.6
E114 21.4
MNM **2960**

HH053
N30 30.0
E114 19.2
MNM **FL118**

CAT C, D
At **FL148**

or
At **FL128**

CAT B
At **8860** 2

Hekou
369 ZF

HH054
N31 19.4
E114 26.0
MNM **8860**

HH054
N30 55.4
E114 21.1
MNM **5910-3940**

RAD required
RNAV 1 GNSS required

ATC
XSH 8D
52 117°

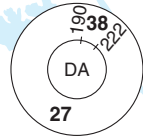
XSH 9D
49 097°

CAT C, D
At **FL167**

or
At **FL148**

CAT B
At **FL128** 2

Xishui
D115.4 XSH
N30 26.1
E115 16.0



	m	FL
	5100	167
	4800	157
	4500	148
	3900	128
	3600	118
	m	ft
	QNH	QNH
	3300	10830
	3000	9850
	2700	8860
	1800	5910
	1200	3940
	900	2960
	300	990

Tianhe DLV 121.8	Wuhan GND 121.65	TWR 124.35 118.1	APP 121.2 119.15 AP01 126.3 125.6 AP02	ATIS 126.6
---------------------	---------------------	------------------------	--	---------------

TA ① AD Elev 112

① TA 10830 at or above 1031 hPa.
TA 9850 between 980-1030 hPa.
TA 8860 at or below 979 hPa.

CAT C, D
At **FL157**

② CAT A: Enroute Alt.

CAT B
At **FL118** ②

Tianmen
D108.8 WTM

HH005
MNM 3940
N30 41.8
E113 58.3

HH150
MNM 3940
N30 47.4
E114 02.4

HH007
MNM 8860
N31 00.1
E114 11.8

Tianhe
254 HG
N30 55.5
E114 21.0

CAT C, D
At **FL148**
or
At **FL128**
CAT B
At **8860** ②

Hekou
369 ZF
N31 19.4
E114 26.0

HH055
MNM FL118
N30 51.4
E114 28.6

WTM 19D
269° 43

Hebaohu
274 DA
N30 41.9
E113 58.3

LKO 19D
224° 23.8

HH001
MNM 7880
N30 28.7
E113 53.6

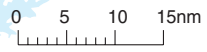
XSH 18D
ATC

HH110
MNM FL118
N30 28.3
E114 45.2

CAT C, D
At **FL157**
CAT B
At **FL118** ②

Longkou
D115.8 LKO
N29 54.4
E113 41.5

199° 35

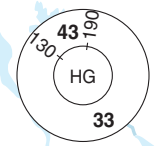


RAD required
RNAV 1 GNSS required

m	FL
5100	167
4800	157
4500	148
3900	128
3600	118
m	ft
3300	10830
3000	9850
2700	8860
2400	7880
1200	3940
300	990

CAT C, D
At **FL167**
or
At **FL148**
CAT B
At **FL128** ②

Xishui
D115.4 XSH
N30 26.1
E115 16.0



Change: New spec.

Tianhe DLV 121.8	Wuhan GND 121.65	TWR 124.35 118.1	APP 121.2 119.15 AP01 126.3 125.6 AP02	ATIS 126.6
----------------------------	----------------------------	-------------------------------	--	----------------------

TA ① AD Elev 112

① TA 10830 at or above 1031 hPa.
TA 9850 between 980-1030 hPa.
TA 8860 at or below 979 hPa.

② CAT A: Enroute Alt.

CAT C, D
At **FL157**

CAT B

At **FL118** ②

Tianmen
D108.8 WTM

N30 38.3
E113 08.6

W520
269° 43'
WTM 01D

W517
24.3° 014'
ZF 01D

At **3940**

Tianhe
254 HG

N30 55.5
E114 21.0

CAT C, D
At **FL148**

or
At **FL128**

CAT B

At **8860** ②

Hekou
369 ZF

N31 19.4
E114 26.0

②
990
D4 WHA

At **4930**

Hebaohu
274 DA

N30 41.9
E113 58.3

Tianhe
D112.2 WHA

N30 46.9
E114 12.2

W518
56° 126°
XSH 01D

Hefei
D116.7 HFE

N31 46.5
E117 18.1

W50
91°
IKUBA

N 30 51.3
E115 54.1

Scale distorted

CAT C, D
At **FL157**

CAT B

At **FL118** ②

Longkou
D115.8 LKO

N29 54.4
E113 41.5

W519
201° 50'
LKO 01D

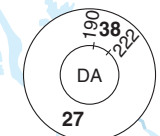
CAT C,D
At **FL167**

or
At **FL148**

CAT B
At **FL128** ②

Xishui
D115.4 XSH

N30 26.1
E115 16.0



<i>m</i>	<i>FL</i>
5100	167
4800	157
4500	148
3900	128
3600	118
<i>m</i>	<i>ft</i>
3300	10830
3000	9850
2700	8860
1500	4930
1200	3940
300	990



SID RWY 04

30 - 3 10Z MAR 12

China - ZHHH / WUHAN
Tianhe WUHAN

Tianhe DLV 121.8	Wuhan GND 121.65	TWR 124.35 118.1	APP 121.2 119.15 AP01 126.3 125.6 AP02	ATIS 126.6
---------------------	---------------------	------------------------	--	---------------

TA ① AD Elev 112

① TA 10830 at or above 1031 hPa.
TA 9850 between 980-1030 hPa.
TA 8860 at or below 979 hPa.

② CAT A: Enroute Alt.

CAT C, D
At **FL157**

CAT B
At **FL118** ②

Tianmen
D108.8 WTM

N30 38.3
E113 08.6

At **2960**

Hebaohu
274 DA

N30 41.9
E113 58.3

At **5910**

Tianhe
254 HG

N30 55.5
E114 21.0

CAT C, D
At **FL148**

or
At **FL128**

CAT B
At **8860** ②

Hekou
369 ZF

N31 19.4
E114 26.0

W520
269°/43
WTM 11D

LKO 12D
201°/14.6
LKO 11D

224°/21.1
LKO 11D

10.3
254°

15.7
061°

990
D3.6 WHA

Tianhe
D112.2 WHA

N30 46.9
E114 12.2

W518
126°
XSH 11D

Hefei
D116.7 HFE

N31 46.5
E117 18.1

W50
91°
IKUBA
N 30 51.3
E115 54.1
Scale distorted

m	FL
5100	167
4800	157
4500	148
3900	128
3600	118
m	ft
QNH	QNH
3300	10830
3000	9850
2700	8860
1800	5910
900	2960
300	990

CAT C,D
At **FL167**

or
At **FL148**

CAT B
At **FL128** ②

Xishui
D115.4 XSH

N30 26.1
E115 16.0

CAT C, D
At **FL157**

CAT B
At **FL118** ②

Longkou
D115.8 LKO

N29 54.4
E113 41.5

W519
201°/35
LKO 11D/12D



Wuhan APP	TWR	GND	ATIS
121.2 119.15 AP01	124.35	121.65	126.6
126.3 125.6 AP02	118.1		
TL 118	AD Elev 112		

1 CAT A: Enroute Alt.

CAT C, D
At **FL167**

CAT B
At **FL128** **1**

Tianmen
D108.8 WTM
N30 38.3
E113 08.6

HH002
N30 40.5
E113 38.4

HH005
N30 41.8
E113 58.3

WTM 9A

FL118

Hebaohu
274 DA
N30 41.9
E113 58.3

HH001
N30 28.7
E113 53.6

CAT C, D
At **FL167**

CAT B
At **FL128** **1**

Longkou
D115.8 LKO
N29 54.4
E113 41.5

LKO 9A

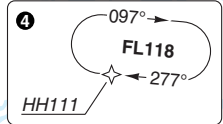
HH006
MNM 8860
N31 10.4
E114 19.4

HH007
MNM 7880
N31 00.1
E114 11.8

ZF 9A
XSH 9A

CF04
At **2300**
N30 38.9
E114 04.1

HH008
N30 22.5
E113 51.4



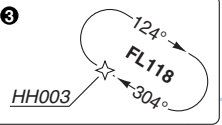
CAT C, D
At **FL157**
or
At **FL138**
CAT B
At **FL118** **1**

Tianhe
254 HG
N30 55.5
E114 21.0

Hekou
369 ZF
N31 19.4
E114 26.0

RAD required
RNAV 1 GNSS required

HH005
MNM FL118
N30 51.4
E114 28.6



HH003
N30 33.6
E115 02.3

XSH 9A

FL138

HH111
N30 27.6
E114 56.3

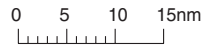
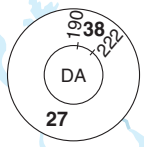
XSH 8A
ATC

m	STD	FL
5100	167	
4800	157	
4200	138	
3900	128	
3600	118	
m	QNH	ft
2700	8860	
2400	7880	
2100	6890	
1800	5910	
1200	3940	
700	2300	

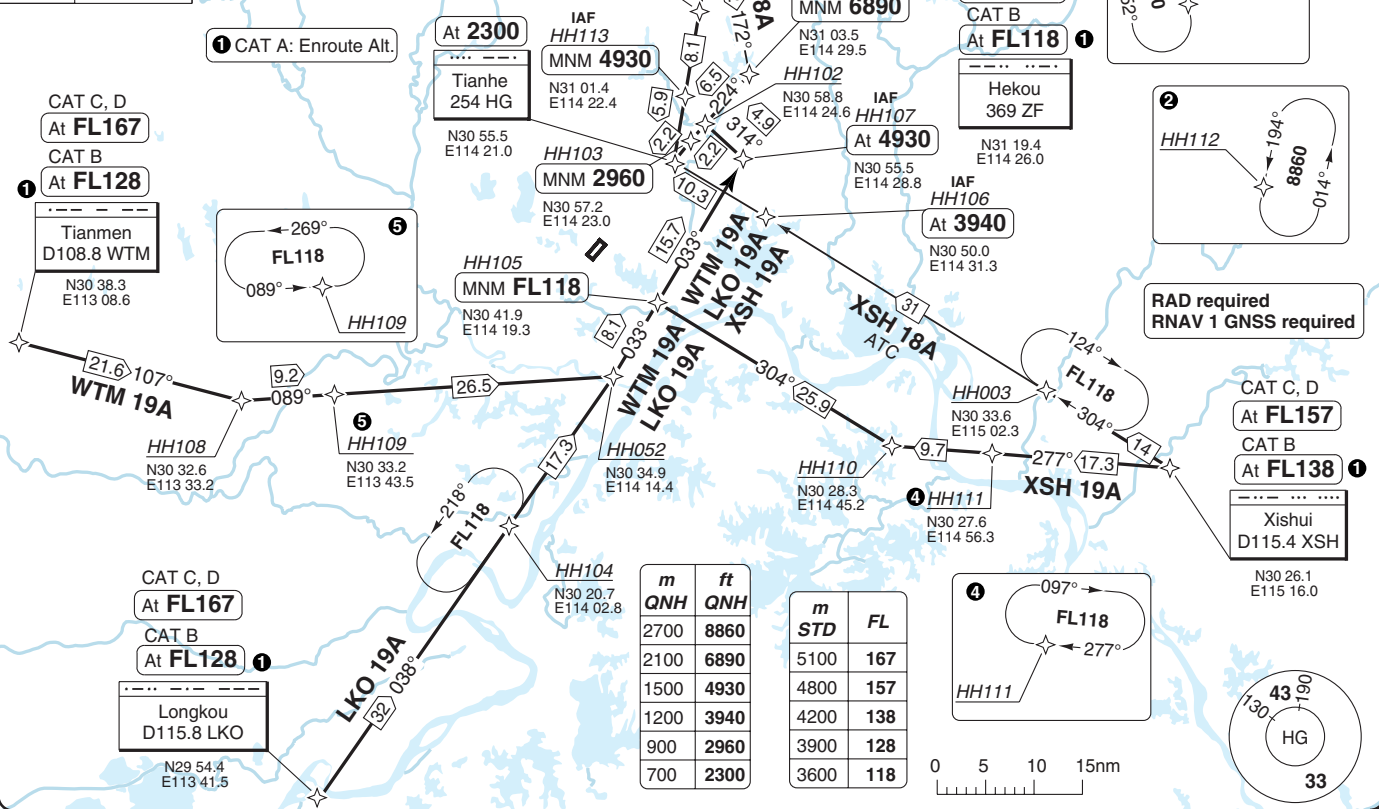
CAT C, D
At **FL157**

CAT B
At **FL138** **1**

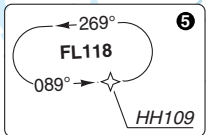
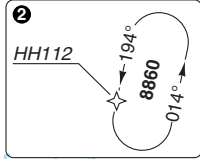
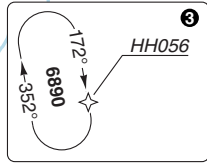
Xishui
D115.4 XSH
N30 26.1
E115 16.0



Wuhan APP	TWR	GND	ATIS
121.2 119.15 AP01	124.35	121.65	126.6
126.3 125.6 AP02	118.1		
TL 118	AD Elev 112		



1 CAT A: Enroute Alt.



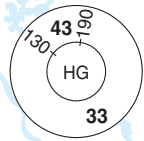
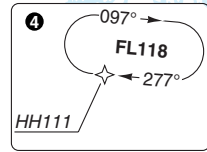
RAD required RNAV 1 GNSS required

CAT C, D
At FL157
CAT B
At FL138
Xishui
D115.4 XSH
N30 26.1
E115 16.0

CAT C, D
At FL167
CAT B
At FL128
Longkou
D115.8 LKO
N29 54.4
E113 41.5

m	ft
2700	8860
2100	6890
1500	4930
1200	3940
900	2960
700	2300

m	FL
5100	167
4800	157
4200	138
3900	128
3600	118



Wuhan APP	TWR	GND	ATIS
121.2 119.15 AP01	124.35	121.65	126.6
126.3 125.6 AP02	118.1		

TL 118 AD Elev 112

1 CAT A: Enroute Alt.

CAT C, D, E
At **FL167**

CAT B
At **FL128** **1**

Tianmen
D108.8 WTM
N30 38.3
E113 08.6

W520
43 089°
WTM 01A

At **5910**
Tianhe
254 HG
N30 55.5
E114 21.0

ZF 01A
XSH 02A
23.8

IAF
At **2960**
346 D

Tianhe
D112.2 WHA
N30 46.9
E114 12.2

3940
13.4°
31.4°
23.9°
14.6°
0.4° D

IAF
At **3940**
D35 LKO
D24.5 WHA

IAF
At **2960**
Hebaohu
274 DA
N30 41.9
E113 58.3

CAT C, D
At **FL157**

or
At **FL138**

CAT B
At **FL118** **1**

Hekou
369 ZF
N31 19.4
E114 26.0

W517
194° 24.3
ZF 01A/02A

224°
22.4
ZF 02A
XSH 03A

W518
306° 56
XSH 02A/03A

Hefei
D116.7 HFE
N31 46.5
E117 18.1

W50
237° 01
IKUBA
N 30 51.3
E115 54.1
Scale distorted

CAT C, D
At **FL157**

CAT B
At **FL138** **1**

Xishui
D115.4 XSH

CAT C, D
At **FL167**

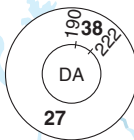
CAT B
At **FL128** **1**

Longkou
D115.8 LKO
N29 54.4
E113 41.5

W519
35° 02.1
LKO 01A/02A



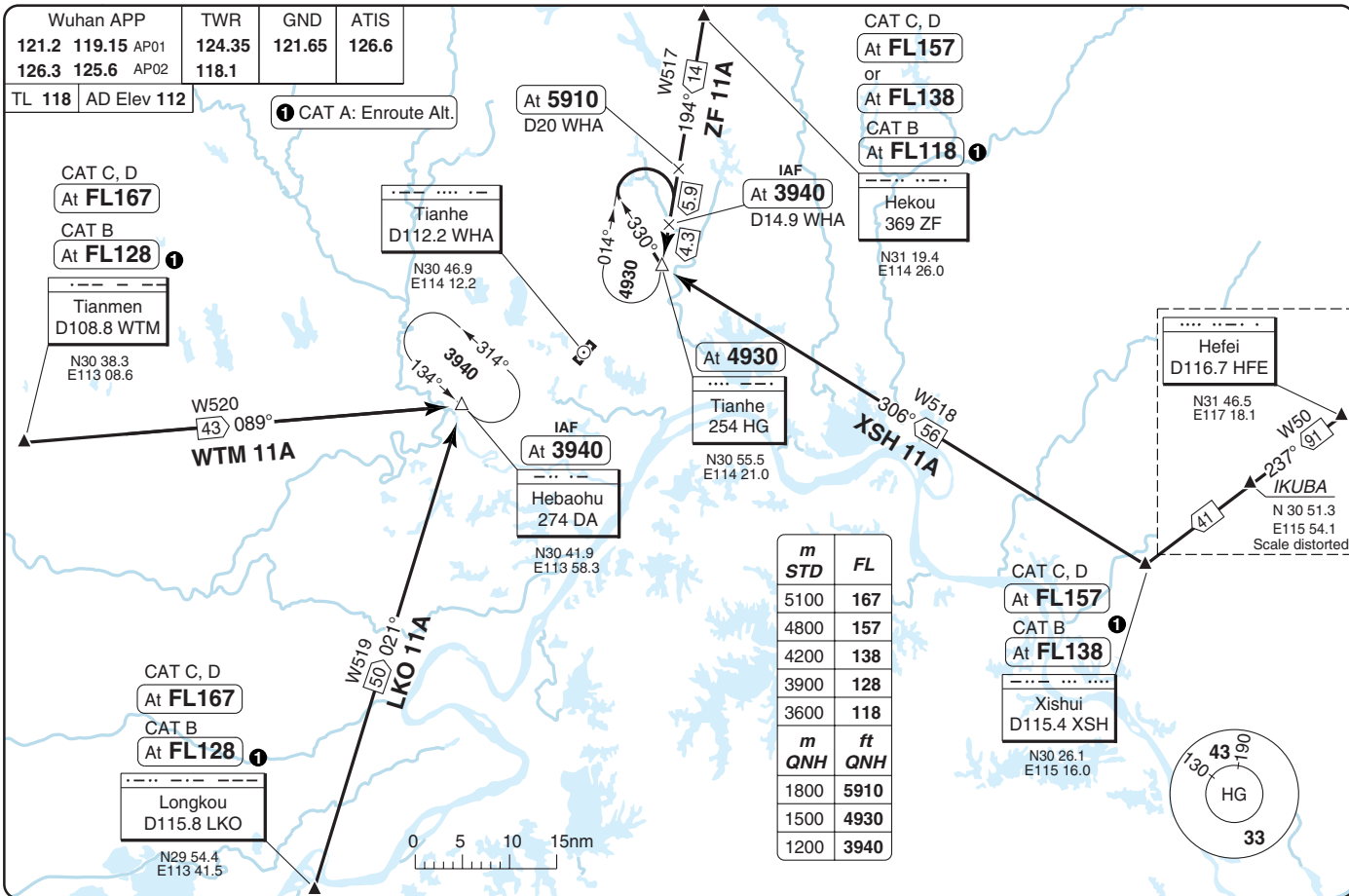
m	FL
5100	167
4800	157
4200	138
3900	128
3600	118
m	ft
QNH	QNH
1800	5910
1200	3940
900	2960



STAR RWY 04

40 - 3 107 MAR 12

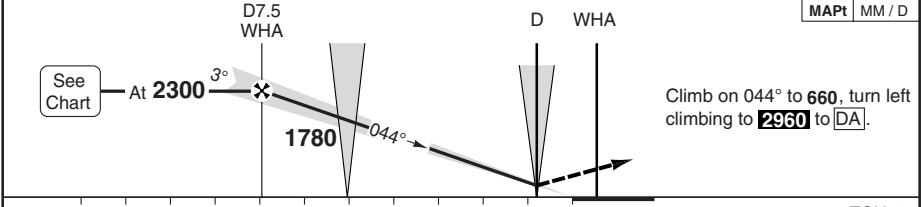
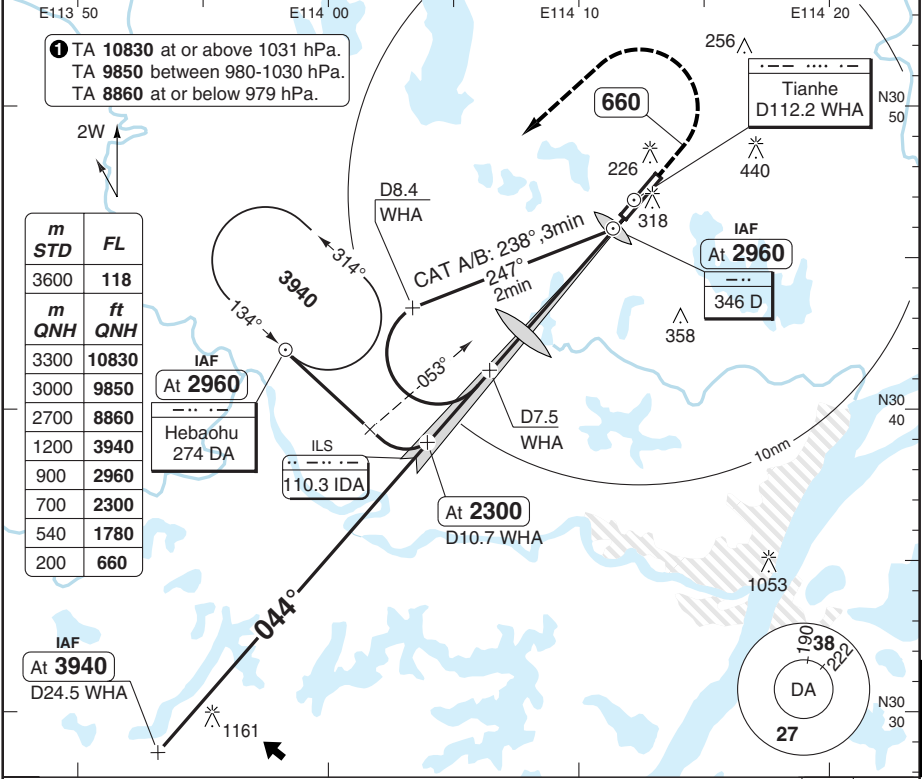
China - ZHHH / WUH
Tianhe WUHAN



ILS RWY 04

Wuhan APP	TWR	GND	ATIS
121.2 119.15 AP01	124.35	121.65	126.6
126.3 125.6 AP02	118.1		

ILS 110.3 IDA	FAT 044°	THR Elev 95	AD Elev 112	TL 118	TA 1
---------------	----------	-------------	-------------	--------	------



nm	11	10	9	8	7	6	5	4	3	2	1	0	TCH 49
ACFT	ILS		LOC+DME		Circling		DME WHA		3.0° ALT		LDA 3400x45 11154x147ft P 3° (59)		
A	300 (200) 550m		430 (332) 800m		630 (509) 1.5km		7.5 2300		7 2140		<p>FALS</p>		
B	310 (214) 550m		840 (722) 2.4km		630 (509) 1.6km		6 1820		5 1500				
C	310 (214) 550m		840 (722) 3.6km		840 (722) 3.6km		5 1500		4 1180				
D	310 (214) 550m		840 (722) 3.6km		840 (722) 3.6km		4 1180		3 870				
GS		80	100	120	140	160	3 870		2 550				
ROD 3.0°		430	540	640	750	860	2 550		1.6 430				

© Navtech - zhhn01iaip00

50 - 1

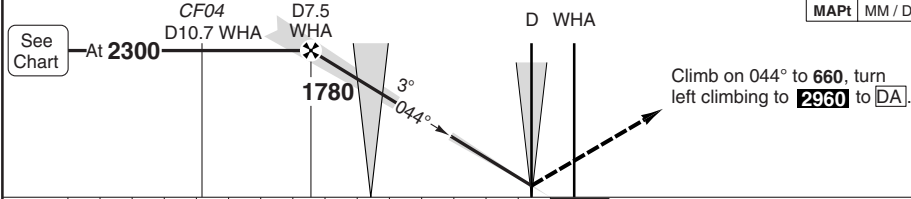
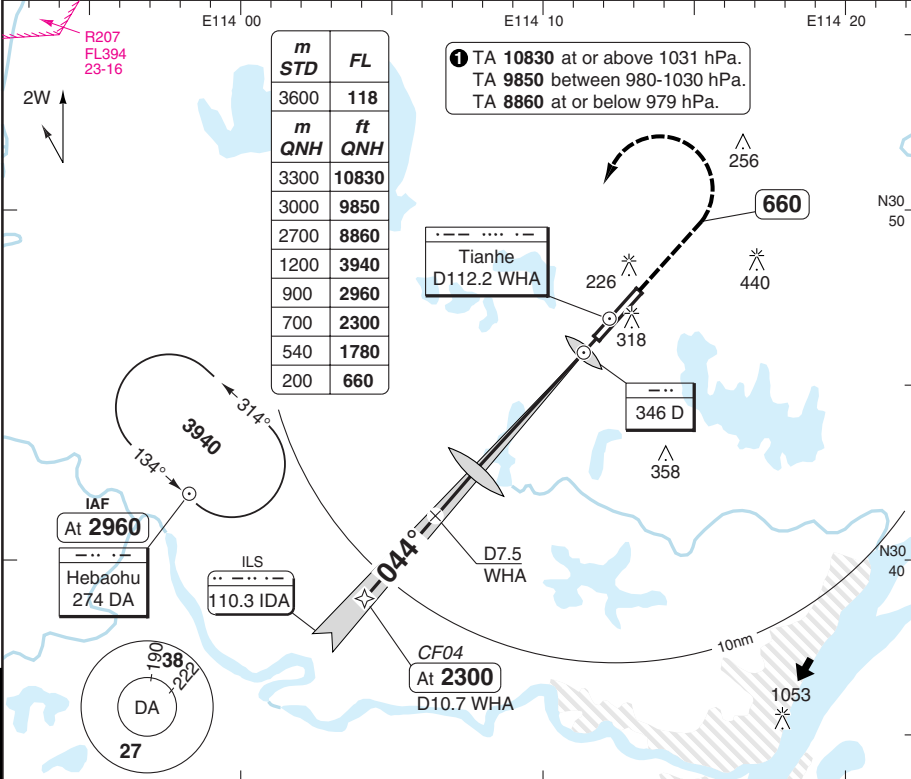
ILS RWY 04 RNAV Transition

Wuhan APP		TWR	GND	ATIS
121.2	119.15 AP01	124.35	121.65	126.6
126.3	125.6 AP02	118.1		

RNAV	FAT 044°	THR Elev 95	AD Elev 112	TL 118	TA ①
------	----------	-------------	-------------	--------	------

m	STD	FL
3600		118
m	QNH	ft
3300		10830
3000		9850
2700		8860
1200		3940
900		2960
700		2300
540		1780
200		660

① TA 10830 at or above 1031 hPa.
TA 9850 between 980-1030 hPa.
TA 8860 at or below 979 hPa.



ACFT	ILS	LOC+DME	Circling	DME WHA	3.0° ALT	LDA 3400x45 11154x147ft P 3° (59)
A	300 (200)	430 (332) 800m	630 (509) 1.5km	7.5	2300	
B	550m		630 (509) 1.6km	7	2140	
C	310 (214)	840 (722) 2.4km	6	1820		
D	550m	840 (722) 3.6km	5	1500		
			4	1180		
			3	870		
			2	550		
GS	80	100	120	140	160	
ROD 3.0°	430	540	640	750	860	
				1.6	430	

© Navtech - zhhh02aip00

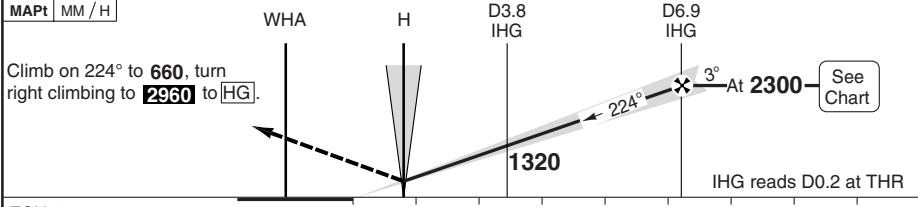
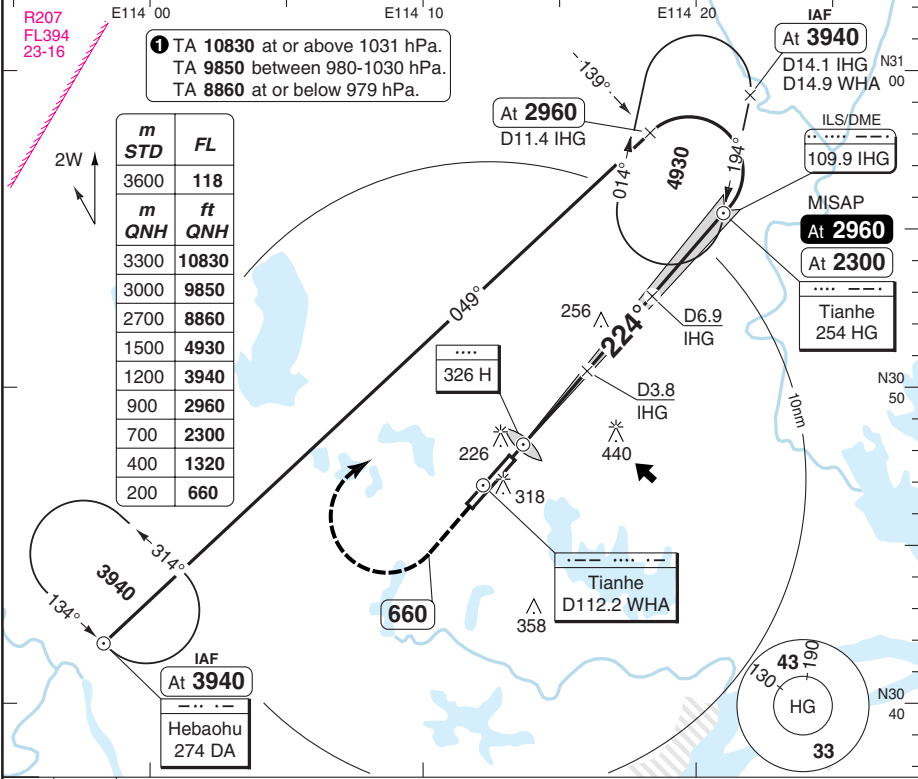
Change: New spec.

THIS CHART IS A PART OF NAVIGRAPH NDAC AND IS INTENDED FOR FLIGHT SIMULATION USE ONLY

ILS RWY 22

Wuhan APP	TWR	GND	ATIS
121.2 119.15 AP01	124.35	121.65	126.6
126.3 125.6 AP02	118.1		

ILS/DME 109.9 IHG	FAT 224°	THR Elev 113	AD Elev 112	TL 118	TA 1
-------------------	----------	--------------	-------------	--------	------



TCH 49	0 1 2 3 4 5 6 7 8 nm							
ACFT	ILS+DME	LOC+DME	Circling			DME	3.0° ALT	LDA 3400x45
A	320 (200) 550m	510 (394) 1100m	630 (509)	1.5km	6.9	2300	11154x147ft P 3° (59)	
B			630 (509)	1.6km	6	2030		
C			840 (722)	2.4km	5	1710		
D	330 (214) 550m	840 (722)	3.6km	4	1390			
				3	1070			
GS	80	100	120	140	160	2	760	FALS
ROD 3.0°	430	540	640	750	860	1.3	510	

© Navtech - zhhn03aip00

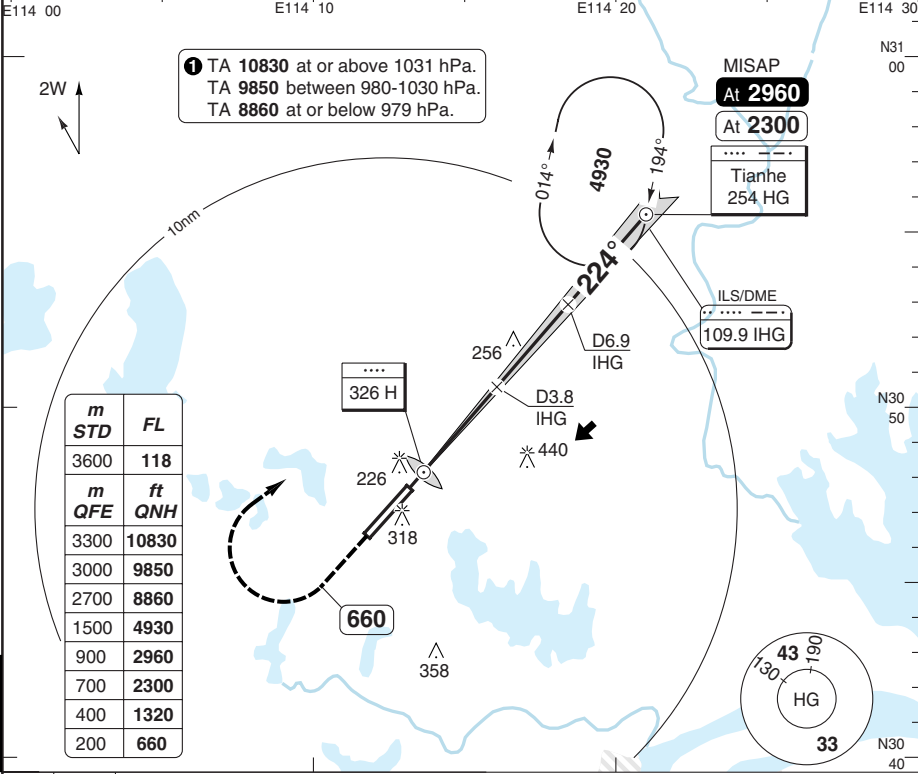
Change: New spec.

THIS CHART IS A PART OF NAVIGRAPH NDAC AND IS INTENDED FOR FLIGHT SIMULATION USE ONLY

ILS RWY 22 RNAV Transition

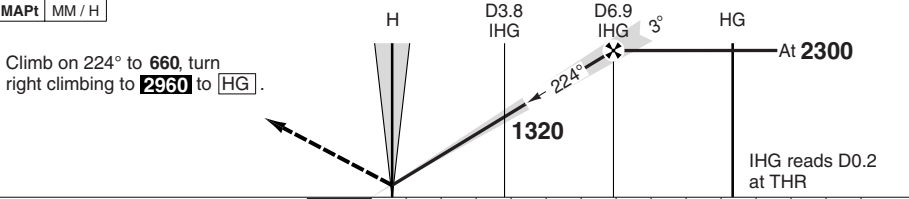
Wuhan APP		TWR	GND	ATIS
121.2	119.15 AP01	124.35	121.65	126.6
126.3	125.6 AP02	118.1		

RNAV	FAT	224°	THR Elev	113	AD Elev	112	TL	118	TA	①
------	-----	------	----------	-----	---------	-----	----	-----	----	---



m	STD	FL
3600		118
m	QFE	ft
3300	10830	
3000	9850	
2700	8860	
1500	4930	
900	2960	
700	2300	
400	1320	
200	660	

PANS OPS 50 - 4



TCH 49

ACFT	ILS+DME	LOC+DME	Circling	DME	3.0° ALT	LDA 3400x45
A	320 (200) 550m	510 (394) 1100m	630 (509) 1.5km	6.9	2300	11154x147ft P 3° (59)
B			630 (509) 1.6km	6	2030	
C			840 (722) 2.4km	5	1710	
D	330 (214) 550m		840 (722) 3.6km	4	1390	
			2	760		
			1.3	510		

Change: New spec.

© Navtech - zhhn04iap00

NDB RWY 04

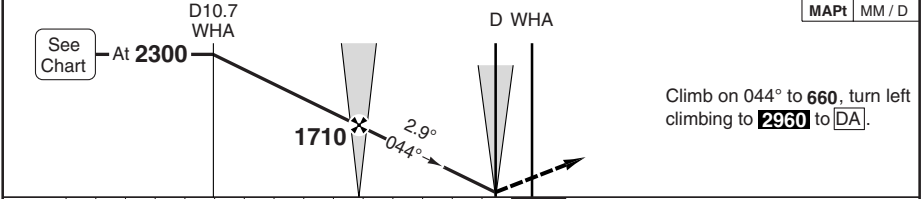
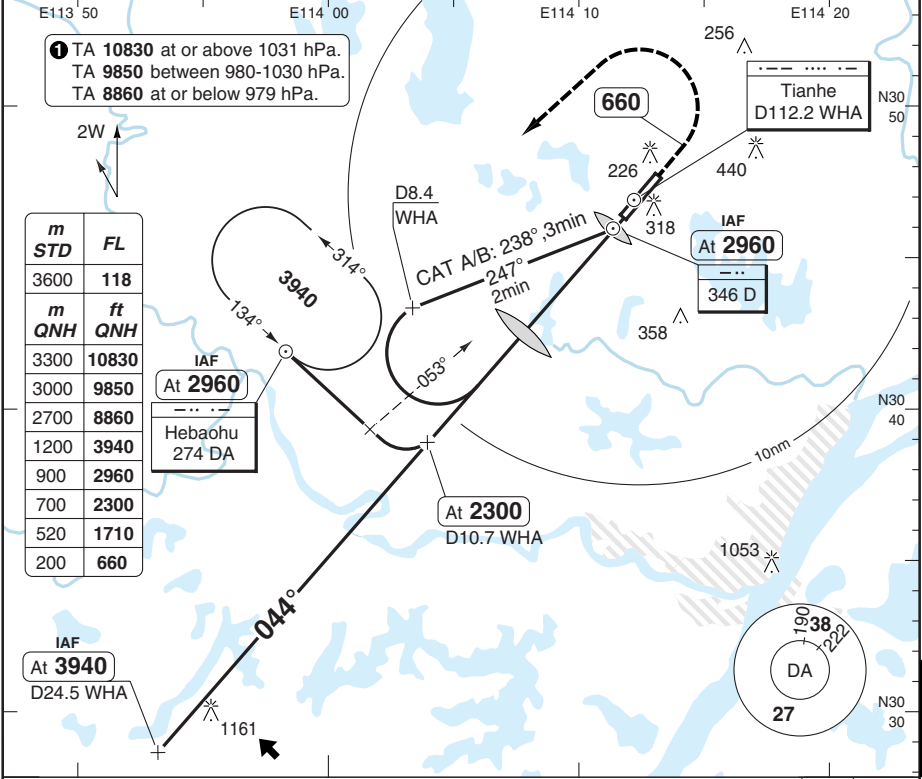
Wuhan APP 121.2 119.15 AP01 126.3 125.6 AP02	TWR 124.35 118.1	GND 121.65	ATIS 126.6
--	--------------------------------------	----------------------	----------------------

NDB 346 D	FAT 044°	THR Elev 95	AD Elev 112	TL 118	TA 1
------------------	-----------------	--------------------	--------------------	---------------	-------------

① TA **10830** at or above 1031 hPa.
TA **9850** between 980-1030 hPa.
TA **8860** at or below 979 hPa.

m	STD	FL
3600		118
m	QNH	ft
3300		10830
3000		9850
2700		8860
1200		3940
900		2960
700		2300
520		1710
200		660

PANS OPS



nm	15	14	13	12	11	10	9	8	7	6	5	4	3	2	1	0
ACFT	NDB+DME		Circling													
A	430 (332) 800m		630 (509) 1.5km													
B			630 (509) 1.6km													
C			840 (722) 2.4km													
D			840 (722) 3.6km													
GS	80	100	120	140	160											
ROD 2.9°	410	510	620	720	820											
FAF-MAPt	3:26	2:45	2:17	1:58	1:43											
DME WHA	2.9° ALT	LDA 3400x45 11154x147ft P 3° (59)														
7.8	2300															
7	2050															
6	1750															
5	1440															
4	1140															
3	830															
2	530															
1.7	430															

50 - 5

© Navtech - zhhn05iap00
EU OPS

FALS

NDB RWY 22

Wuhan APP	TWR	GND	ATIS
121.2 119.15 AP01	124.35	121.65	126.6
126.3 125.6 AP02	118.1		

NDB	254 HG	FAT	224°	THR Elev	113	AD Elev	112	TL	118	TA	①
-----	--------	-----	------	----------	-----	---------	-----	----	-----	----	---

R207
FL394
23-16

① TA 10830 at or above 1031 hPa.
TA 9850 between 980-1030 hPa.
TA 8860 at or below 979 hPa.

m	FL
3600	118
m	ft
QNH	QNH
3300	10830
3000	9850
2700	8860
1500	4930
1200	3940
900	2960
480	1580
200	660



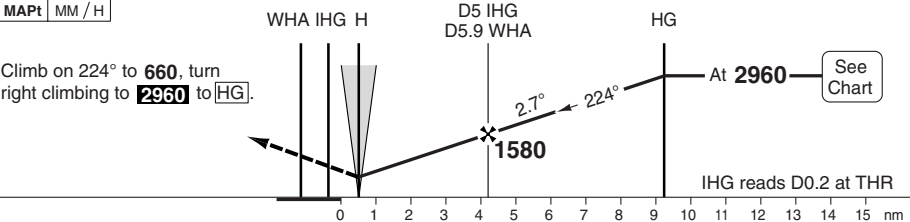
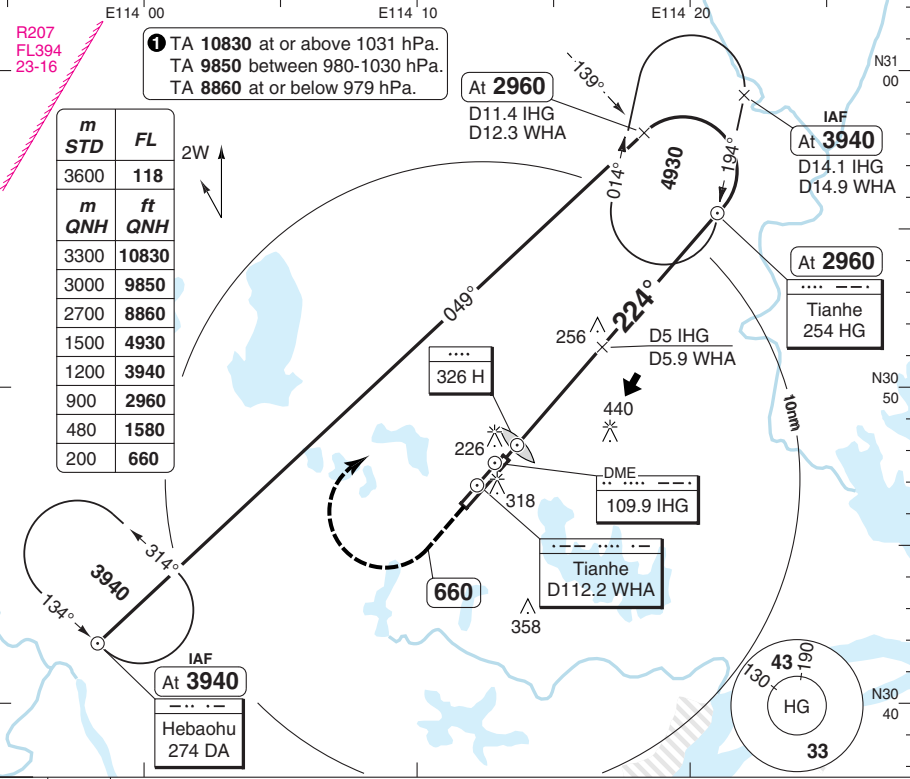
At 2960
D11.4 IHG
D12.3 WHA

IAF
At 3940
D14.1 IHG
D14.9 WHA

At 2960
Tianhe
254 HG

PANS OPS

50 - 6



ACFT	NDB+DME	Circling	DME WHA	2.8° ALT	DME IHG	2.8° ALT	LDA 3400x45 11154x147ft P 3° (59)			
A	510 (394) 1100m	630 (509) 1.5km	10.6	2960	9.7	2960				
B		630 (509) 1.6km	8	2200	7	2170				
C		840 (722) 2.4km	7	1910	6	1880				
D		840 (722) 3.6km	6	1610	5	1580				
GS	80	100	120	140	160	5		1320	4	1290
ROD 2.8°	400	490	590	690	790	4		1030	3	1000
FAF-MAPt	3:12	2:34	2:08	1:50	1:36	3	740	2	710	
						2.2	510	1.3	510	

© Navtech - zhhn06iap00
EU OPS

FALS

Change: New spec.

THIS CHART IS A PART OF NAVIGRAPH NDAC AND IS INTENDED FOR FLIGHT SIMULATION USE ONLY