

Airport information:

Country: Australia

City: PERTH INTL

Coordinates: S 31 56.4, E115 58.0

Elevation: 67

Customs: Customs

Fuel: Jet A1, AVGAS

RFF: CAT 9

hours: H24.

Runways:

Runway 03

Takeoff length: 3444, Landing length: 3444

Runway 06

Takeoff length: 2163, Landing length: 2163

Runway 21

Takeoff length: 3444, Landing length: 3444

Runway 24

Takeoff length: 2163, Landing length: 2163

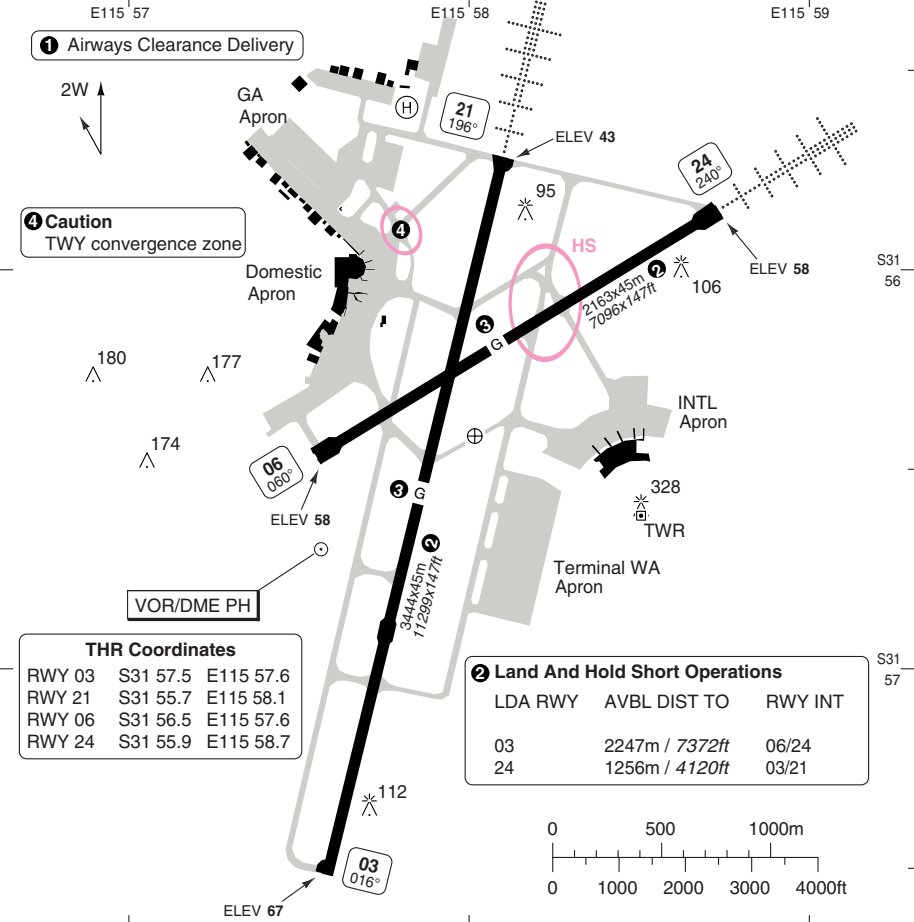
AERODROME

PERTH

10 - 1

Perth ACD 1	GND	TWR	RAD	DEP	ATIS
118.55	121.7	120.5	135.25	118.7	113.7
132.95					123.8

AD Elev 67	ARP: S31 56.4 E115 58.0	RFF: CAT 9	AD HR: H24
------------	-------------------------	------------	------------



THR Coordinates

RWY 03	S31 57.5	E115 57.6
RWY 21	S31 55.7	E115 58.1
RWY 06	S31 56.5	E115 57.6
RWY 24	S31 55.9	E115 58.7

2 Land And Hold Short Operations

LDA RWY	AVBL DIST TO	RWY INT
03	2247m / 7372ft	06/24
24	1256m / 4120ft	03/21

RWY	Slope	TORA m/ft	LDA m/ft	ALS	REDL	Additional
03 3	-0.2	3444 / 11299	3444 / 11299	-	H	P 3°/R (71), REIL
21 3	+0.2	3444 / 11299	3444 / 11299	H-C	H	P 3°/R (71), REIL
06 3	0	2163 / 7096	2163 / 7096	-	H	P 3° (64), REIL
24	0	2163 / 7096	2163 / 7096	H-C	H	P 3°/R (71), REIL

3 First 160m/ 525ft not grooved.

Aeronautical Data © Australian Airservices

© Navtech - ypph01laorgo

Change: TWY, RWY

THIS CHART IS A PART OF NAVIGRAPH NDAC AND IS INTENDED FOR FLIGHT SIMULATION USE ONLY

AERODROME

10 - 2

STATE TAKE OFF MINIMA

RWY	Facilities	CEL/VIS			
		A	B	C	D
All	REDL + RCLL + RCL	LVTO	Ap.O	0ft / 0.35km	
	REDL + RCLL or RCL			0ft / 0.55km	
	NIL (Day only)			0ft / 0.8km	

PLANNING MINIMA ALTERNATE

CAT A/B	1193ft / 4.4km
CAT C	1873ft / 6.0km
CAT D	1873ft / 7.0km

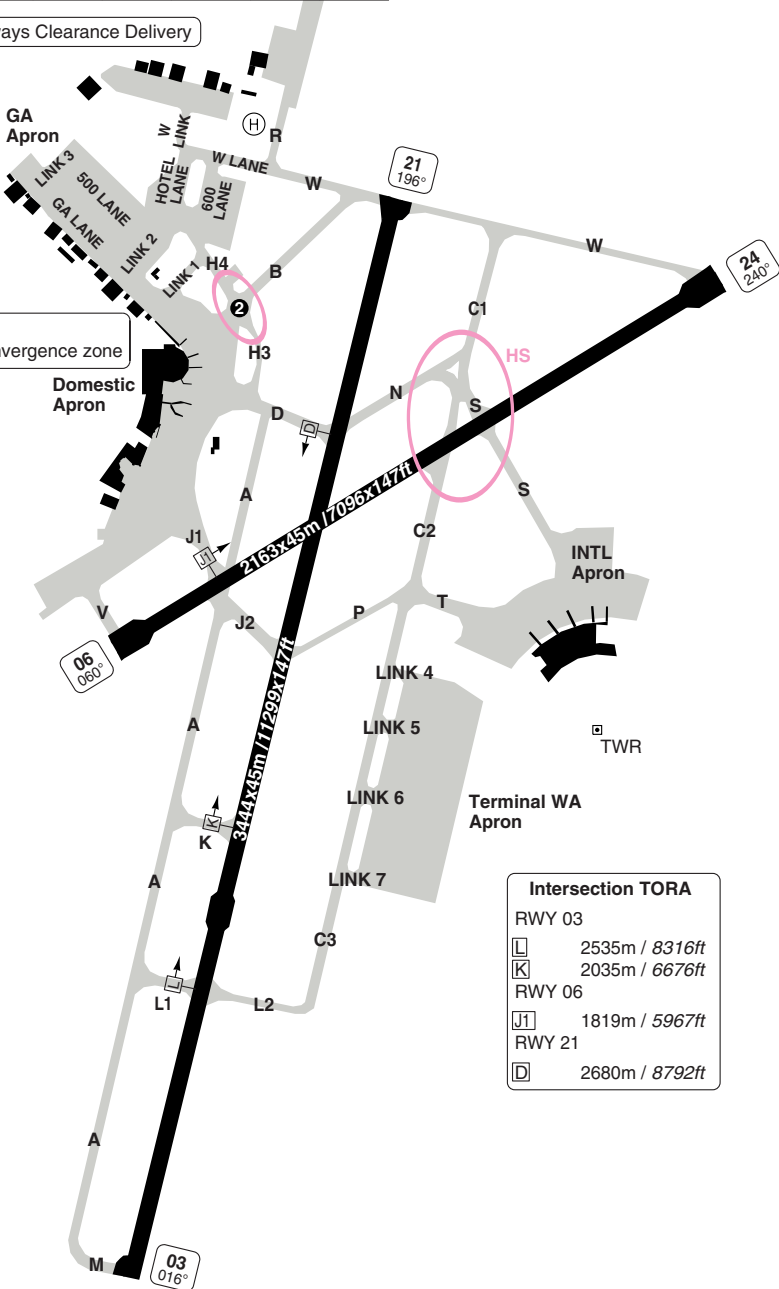
Note: Special ALTN MNM for all CAT: **700ft / 2.5km** after ILS or LOC RWY 03/21, 24.

GROUND Overview

Perth ACD ①	GND	TWR	RAD	DEP	ATIS
118.55	121.7	120.5	135.25	118.7	113.7
132.95					123.8

① Airways Clearance Delivery

② Caution
TWY convergence zone



Intersection TORA	
RWY 03	
□	2535m / 8316ft
K	2035m / 6676ft
RWY 06	
J1	1819m / 5967ft
RWY 21	
D	2680m / 8792ft

Aeronautical Data © Australian Airservices

© Navitech - ypph03gaorg0

Change: TWY

THIS CHART IS A PART OF NAVIGRAPH NDAC AND IS INTENDED FOR FLIGHT SIMULATION USE ONLY

10 - 4 | WEF 08 MAR 12

10 - 4 | 08 FEB 12

Australia - YPPH / PER
PERTH

GROUND Domestic Apron Parking

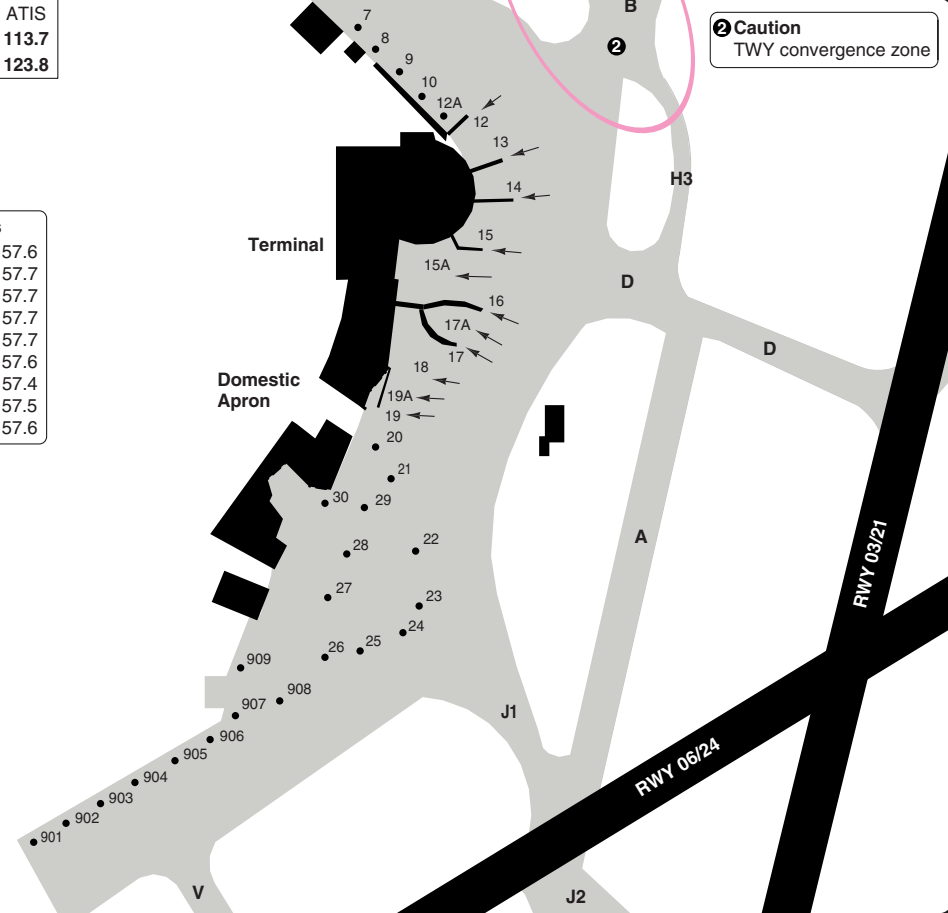
10 - 4

Perth ACD ①	GND	TWR	RAD	DEP	ATIS
118.55	121.7	120.5	135.25	118.7	113.7
132.95					123.8

① Airways Clearance Delivery

Parking position coordinates		
7, 8	S31 55.9	E115 57.6
9-10	S31 55.9	E115 57.7
12-15, 12A, 15A	S31 56.0	E115 57.7
16-20, 17A, 19A	S31 56.1	E115 57.7
21-24, 27	S31 56.2	E115 57.7
25, 26, 28-30	S31 56.2	E115 57.6
901, 902	S31 56.4	E115 57.4
903-906, 909	S31 56.3	E115 57.5
907, 908	S31 56.3	E115 57.6

© Australian Airservices



② Caution
TWY convergence zone

© Navtech - ypph04garrgo

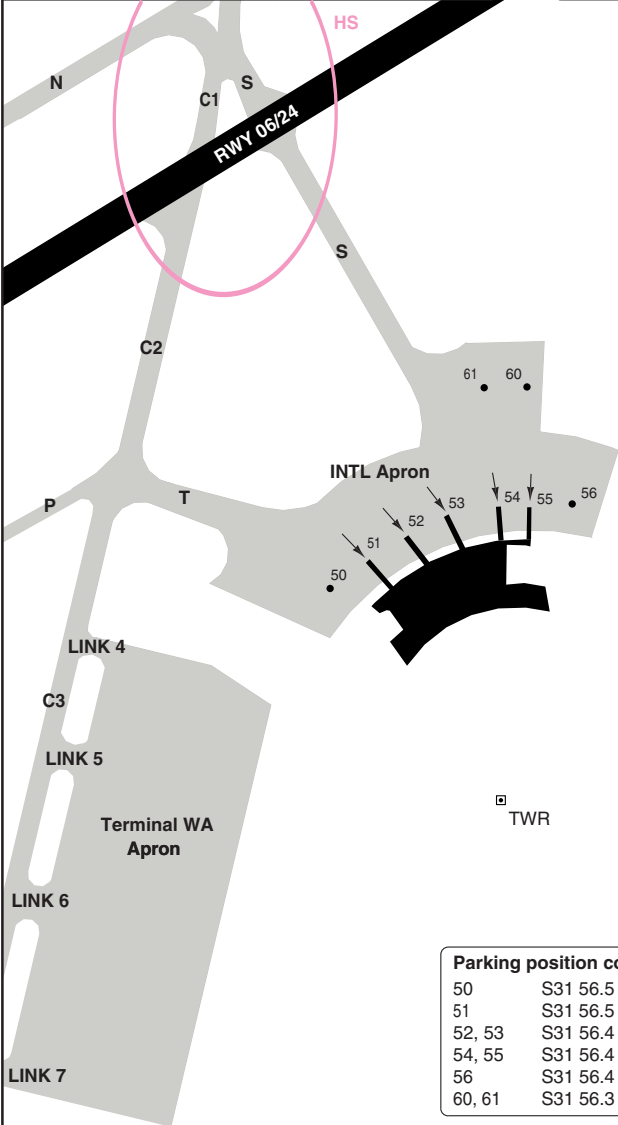
Change: TWY, Stands

THIS CHART IS A PART OF NAVIGRAPH NDAC AND IS INTENDED FOR FLIGHT SIMULATION USE ONLY

GROUND INTL Apron Parking

Perth ACD ①	GND	TWR	RAD	DEP	ATIS
118.55	121.7	120.5	135.25	118.7	113.7
132.95					123.8

① Airways Clearance Delivery



Parking position coordinates		
50	S31 56.5	E115 58.3
51	S31 56.5	E115 58.4
52, 53	S31 56.4	E115 58.4
54, 55	S31 56.4	E115 58.5
56	S31 56.4	E115 58.6
60, 61	S31 56.3	E115 58.5

Aeronautical Data © Australian Airservices

© Navtech - ypph05gaorg0

Change: Hot spot

THIS CHART IS A PART OF NAVIGRAPH NDAC AND IS INTENDED FOR FLIGHT SIMULATION USE ONLY

GROUND GA Apron Parking

PERTH

10 - 6

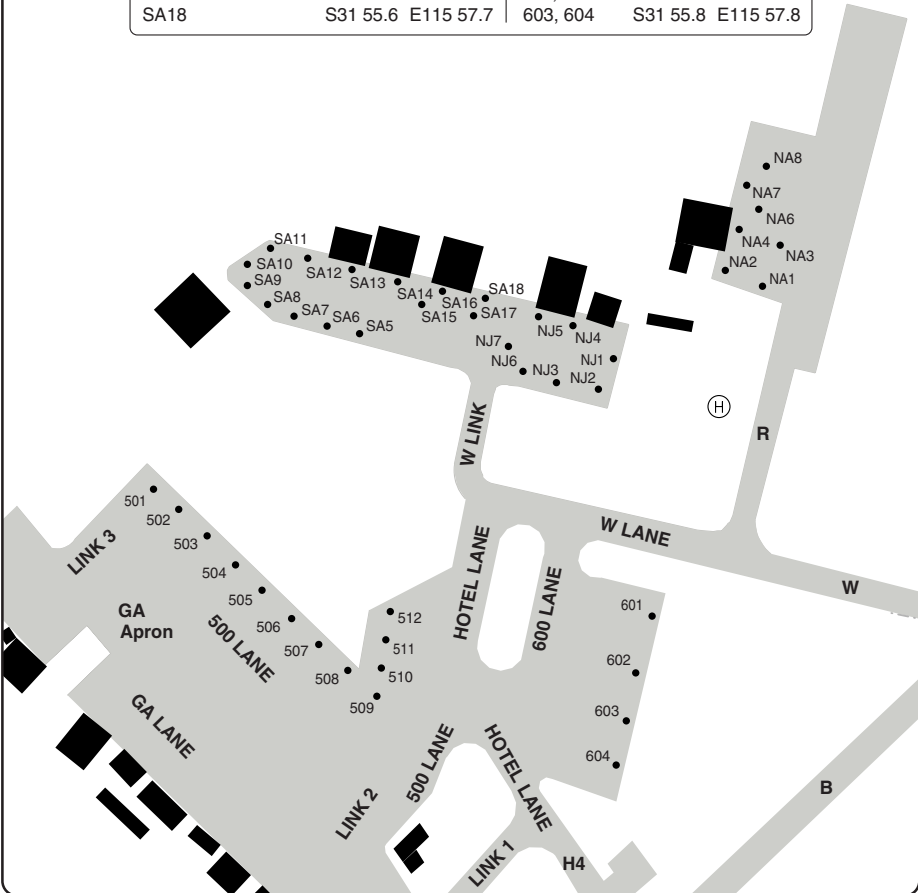
Perth ACD ①	GND	TWR	RAD	DEP	ATIS
118.55	121.7	120.5	135.25	118.7	113.7
132.95					123.8

① Airways Clearance Delivery

Parking position coordinates					
NJ1, NJ4	S31 55.6	E115 57.8	H1	S31 55.5	E115 57.6
NJ2, NJ3, NJ5-NJ7	S31 55.6	E115 57.7	501-505	S31 55.6	E115 57.5
NA1-NA7	S31 55.5	E115 57.9	506-508	S31 55.7	E115 57.6
NA8	S31 55.4	E115 57.9	509-510	S31 55.8	E115 57.6
			511-512	S31 55.7	E115 57.6
SA5	S31 55.6	E115 57.6	601, 602	S31 55.7	E115 57.8
SA6-SA17	S31 55.5	E115 57.6	603, 604	S31 55.8	E115 57.8
SA18	S31 55.6	E115 57.7			

Aeronautical Data © Australian Airservices

© Navtech - ypph06gaorg0



Change: APN, stands

THIS CHART IS A PART OF NAVIGRAPH NDAC AND IS INTENDED FOR FLIGHT SIMULATION USE ONLY

GENERAL

PERTH

10 - 7

GENERAL

- 1. **SPEED**
Max 250kt below 10000ft.
- 2. **COM**
 - 2.1 RFF: 131.0 is avbl for direct COM between Fire Commander and affected flight crew during an airport emergency. ATC must be advised on an intention to operate on the FREQ.
- 3. **TAXI**
 - 3.1 TWY W between TWY C1 and THR 24 AVBL for Code E ACFT and below.
 - 3.2 TWY H3, H4, to Hotel lane (between 500 lane and H4), 500 lane, Link 1 and Link 2 avbl to B737/A320 and below.
 - 3.3 Apron edge Taxilane between TWY D and TWY J only avbl to ACFT with wingspan of MAX 52m/171ft and below and approved domestic ops of A330 ACFT.
 - 3.4 Apron edge Taxilane between TWY S and TWY T not avbl to ACFT with wingspan more than 65m/213ft.
 - 3.5 Apron edge Taxilane between TWY V and TWY J avbl to code C ACFT and below.
 - 3.6 GA Taxilane not available to ACFT above 19000kg or wingspan greater than 24m/79ft.
 - 3.7 TWY V AVBL to code C ACFT and below.
 - 3.8 ACFT to use MNM power when entering, exiting and operating on all aprons.
 - 3.9 EXIT TWY J2 left to TWY A1.
 - 3.10 EXIT TWY A1 right to TWY J2 not permitted.
 - 3.11 Code F ACFT with wingspan more than 65m/213ft proceeding to Bay 61A must access via TWY S.
 - 3.12 TWY W (west of TWY B) and W lane AVBL for BAE146/F100 and below.
 - 3.13 Left or right turn from RWY 06 threshold on to TWY A available to ACFT and below except B727.

- 3.14 ACFT holding on TWY D between RWY 03/21 and TWY A restricted to A330 and below.
- 3.15 Entry to domestic apron Taxilane on TWY D or B restricted to ACFT code E and below.
- 3.16 Code D and E ACFT on TWY A and J1 must not pass behind code E ACFT on TWY J2 due to insufficient wingtip clearance.
- 4. **WARNING**
 - 4.1 Severe turbulence may be experienced below 3000ft in the TMA during summer months when easterly wind gradients prevail.
 - 4.2 RWY 06/24: ACFT with MAUW above 22700kg to make 180° turns at RWY ends only.

ARRIVAL

- 1. **PREFERENTIAL RWY SYSTEM**
LDG: 1. RWY 24 and 21
2. RWY 03
3. RWY 06
- 2. **PREFERRED FLIGHT PATHS**
 - 2.1 The minimum height over residential areas is:
 - Jet ACFT 5000ft AGL.
 - Turbo prop ACFT 3000ft AGL.
 - 2.2 Non STAR tracking must approximate STAR tracks or must comply with para 2.1 except:
 - a. RWY 21 arriving from south
 - ACFT MAX 45000kg MTOW, visual left circuit.
 - b. RWY 21, arriving from west
 - Via WOOFY to 6nm final RWY 21 for visual APCH.
 - c. RWY 24, arriving from south
 - Via SPUDO.
 - d. RWY 03, arriving from south or west
 - Via HARMN for ILS APCH.
 - Via 5nm final RWY 03 for visual APCH.
 - e. RWY 06, arriving from southwest or west
 - West of the coast then via straight in APCH.

GENERAL

PERTH

8-01

3. TRAFFIC NOTES

- 3.1 EXIT RWY 06 via TWY S not permitted.
- 3.2 EXIT RWY 21 via TWY N not permitted.
- 3.3 EXIT RWY 21 via TWY P not permitted for ACFT with wingspan more than 36m/118ft.
- 3.4 EXIT RWY 24 via TWY C1 not permitted.
- 3.5 Wide bodied ACFT LDG RWY 24 and turning into TWY J2 must follow modified TWY markings, Wide bodied ACFT overshooting TWY J2 shall use turning node at end of RWY 24, backtrack RWY and turn right into TWY J2.

4. PARKING

Stand 51 - 55, nose in guidance.

DEPARTURE

1. PREFERENTIAL RWY SYSTEM

- TKOF: 1. RWY 21
 2. RWY 03 and 06
 3. RWY 24

2. COBT

- 2.1 COBT are in effect Mon-Fri 2130-0030.
- 2.2 Flights not operating to schedule will notify the National Operations Centre at least 24 hours prior to departure.
- 2.3 COBT will be allocated by email by 0900.
- 2.4 Pushback should be requested within COBT plus 10 minutes.
- 2.5 The National Operation Centre must be notified as soon as possible if unable to comply with COBT.

3. PREFERRED FLIGHT PATHS

All RWYs: Follow SID.

4. NOISE ABATEMENT PROCEDURE

- 4.1 ICAO standard NAP (NADP 1 or 2) applies.
- 4.2 For ACFT which have engines with a by pass ratio greater than 3.5 may use the following proc:
 - 4.2.1 Climb at V_{2+10kt} to V_{2+20kt} - or body angle limit speed; and
 - 4.2.2 Maintain take off power to a height above the AD of 1000ft:
 - 4.2.3 Then maintaining a positive rate of climb, accelerate to zero flap minimum safe manoeuvring speed (V_{Zf}) retracting flap on schedule;
 - 4.2.4 Then reduce to normal climb power/thrust; and
 Note: For aeroplanes with slow flap retraction, reduce power/thrust at an intermediate flap setting.
 - 4.2.5 Continue climb at no greater than $V_{Zf+10kt}$ to a height above the AD to 3000ft:
 - 4.2.6 Accelerate smoothly to en route climb speed; and
 - 4.2.7 Maintain RWY heading unless required to do otherwise in accordance with a SID or specific ATC instruction.

5. TRAFFIC NOTES

When traffic density permits, ATC will cancel SID and shorten track on reaching 5000ft.

© Navtech - ypph08gaorg0

THIS CHART IS A PART OF NAVIGRAPH NDAC AND IS INTENDED FOR FLIGHT SIMULATION USE ONLY

Change: MT, SID text

Perth ACD 1	GND	TWR	APP	RAD	DEP	ATIS
118.55	121.7	120.5	123.6	135.25	118.7	113.7
132.95						123.8

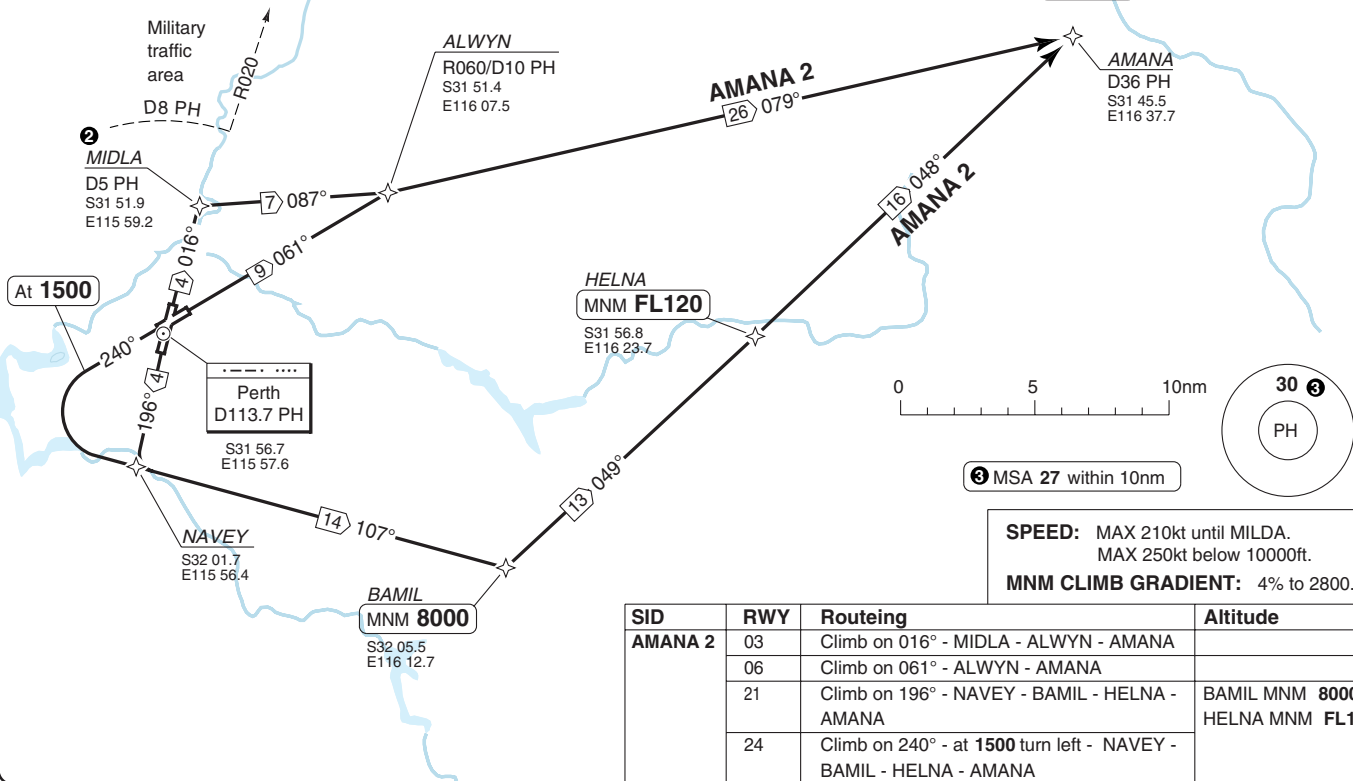
TA 10000 AD Elev 67

1 Airways Clearance Delivery

2 CAUTION
Do not overfly MIDLA.
Pearce Airport traffic operates 3nm N of MIDLA.

NAV
GPS permitted instead of DME.
Reference waypoint PH VOR.

JET only



SID	RWY	Routing	Altitude
AMANA 2	03	Climb on 016° - MIDLA - ALWYN - AMANA	
	06	Climb on 061° - ALWYN - AMANA	
	21	Climb on 196° - NAVAY - BAMIL - HELNA - AMANA	BAMIL MNM 8000 HELNA MNM FL120
	24	Climb on 240° - at 1500 turn left - NAVAY - BAMIL - HELNA - AMANA	

SID RNAV AMANA 2

30 - 1 | 19 OCT 11

Australia - YPPH / PER

PERTH

SID RNAV GURAK 4

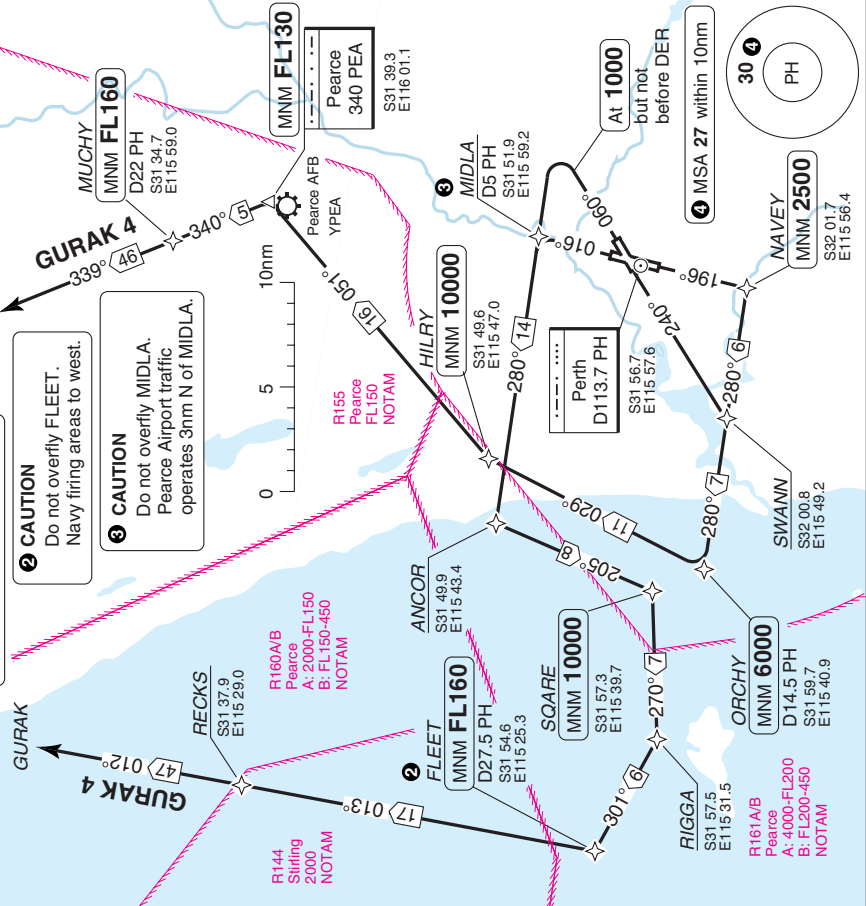
Perth AC D 1	GND	TWR	APP	RAD	DEP	ATIS
118.55	121.7	120.5	123.6	135.25	118.7	113.7
132.95						123.8

NAV
GPS permitted instead of DME.
Reference waypoint PH VOR.

TA 10000 AD Elev 67

GURAK

GURAK



SPEED: MAX 250kt below 10000ft.
RWY 03, 06: MAX 210kt until MIDLA. MAX 285kt above 10000ft until FLEET.

SID	RWY	MNM Climb	Routeing	Altitude
GURAK 4	03	7% to FL160	Climb on 016° - MIDLA - ANCOR - SQUARE - RIGGA - FLEET - RECKS - GURAK	SQUARE MNM 10000 FLEET MNM FL160
	06	7% to FL160	Climb on 060° - at 1000 but not before DER (D1:3 PH) turn left - MIDLA - ANCOR - SQUARE - RIGGA - FLEET - RECKS - GURAK	
	21	3.7% to 2800 (6% to FL160)	Climb on 196° - NAVVEY - SWANN - ORCHY - HILRY - PEA - MUYCHY - GURAK	RWY 21: NAVVEY MNM 2500 ORCHY MNM 6000 HILRY MNM 10000 PEA MNM FL130 MUYCHY MNM FL160
	24	3.7% to 2800 (7% to 6000, then 6% to FL160)	Climb on 240° - SWANN - ORCHY - HILRY - PEA - MUYCHY - GURAK	

Change: MNM Climb

THIS CHART IS A PART OF NAVIGRAPH NDAC AND IS INTENDED FOR FLIGHT SIMULATION USE ONLY

THIS CHART IS A PART OF NAVIGRAPH NDAC AND IS INTENDED FOR FLIGHT SIMULATION USE ONLY

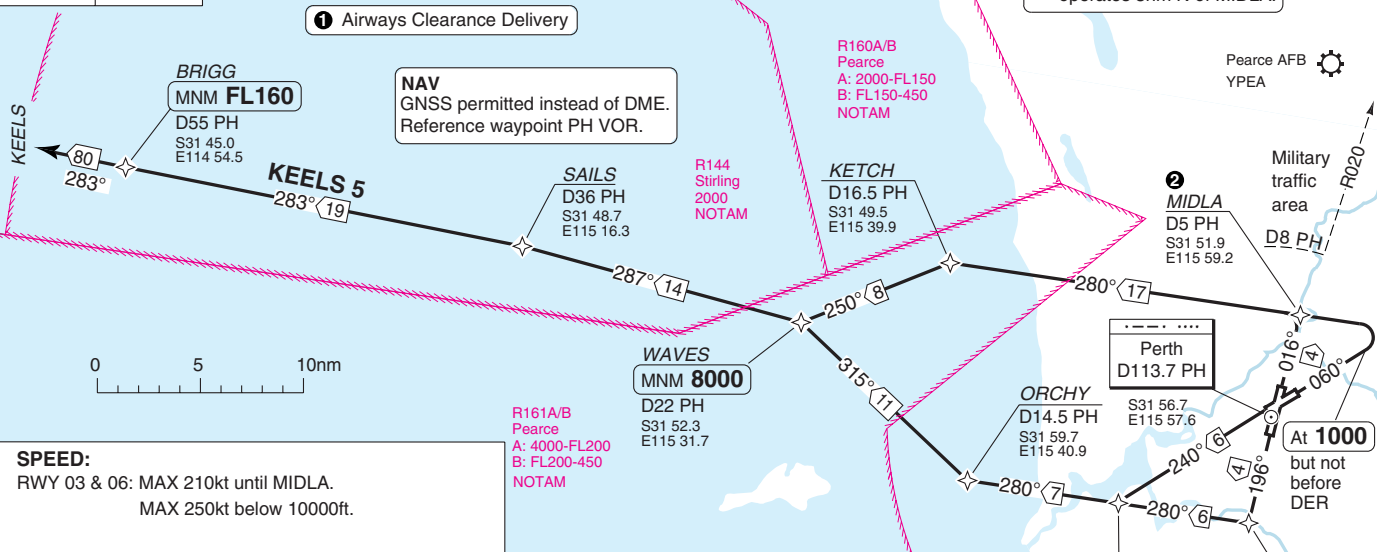
Perth ACD 1	GND	TWR	APP	RAD	DEP	ATIS
118.55	121.7	120.5	123.6	135.25	118.7	113.7
132.95						123.8

TA 10000 AD Elev 67

1 Airways Clearance Delivery

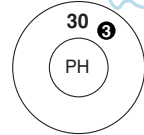
NAV
GNSS permitted instead of DME.
Reference waypoint PH VOR.

2 CAUTION
Do not overfly MIDLA.
Pearce Airport traffic operates 3nm N of MIDLA.



SPEED:
RWY 03 & 06: MAX 210kt until MIDLA.
MAX 250kt below 10000ft.

SID	RWY	MNM CLIMB	Routing	Altitude
KEELS 5	03	3.3% to 2800 (4.7% to 8000)	Climb on 016° - MIDLA - KETCH - WAVES - SAILS - BRIGG - KEELS	WAVES MNM 8000 BRIGG MNM FL160
	06	4% to 2800 (4.7% to 8000)	Climb on 060° - at 1000 but not before DER (D1.3 PH) turn left - MIDLA - KETCH - WAVES - SAILS - BRIGG - KEELS	
	21	3.7% to 2800 (4.7% to 8000)	Climb on 196° - NAVHEY - SWANN - ORCHY - WAVES - SAILS - BRIGG - KEELS	NAVHEY MNM 2500 WAVES MNM 8000 BRIGG MNM FL160
	24	3.7% to 2800 (4.7% to 8000)	Climb on 240° - SWANN - ORCHY - WAVES - SAILS - BRIGG - KEELS	WAVES MNM 8000 BRIGG MNM FL160



3 MSA 27 within 10nm

SID RNAV KEELS 5

W/E 08 MAR 12

30 - 3 | 08 FEB 12

Australia - YPPH / PER

PERTH

SID **RNAV** RAVON 2

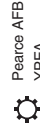
PERTH

Perth AC D 1	GND	TWR	APP	RAD	DEP	ATIS
118.55	121.7	120.5	123.6	135.25	118.7	113.7
132.95						123.8

TA 10000 AD Elev 67

1 Airways Clearance Delivery

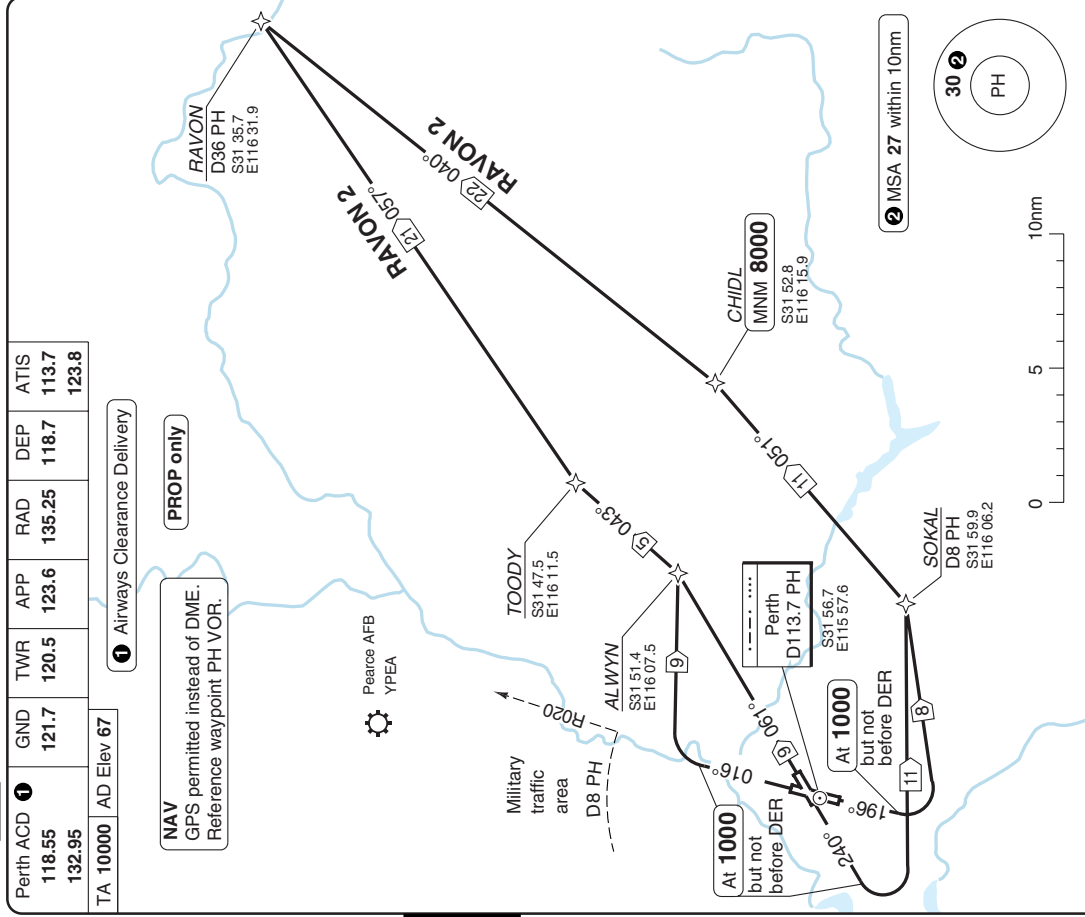
NAV
GPS permitted instead of DME.
Reference waypoint PH VOR.

PROP onlyPercease AFB
YPEA

30 - 4

Aeronautical Data © Australasian Airservices

© Navtech - ypph04d4a0rg0

**SPEED:** MAX 150kt below 4000ft.

MAX 180kt between 4000ft to 10000ft.

MNM CLIMB GRADIENT: 4% to 2800.

SID	RWY	Routeing	Altitude
RAVON 2	03	Climb on 016° - at 1000 but not before DER (D1.1 PH) turn right - ALWYN - TOODY - RAVON	
	06	Climb on 061° - ALWYN - TOODY - RAVON	
	21	Climb on 196° - at 1000 but not before DER (D0.8 PH) turn left - SOKAL - CHIDL - RAVON	CHIDL MNM 8000
	24	Climb on 240° - at 1000 but not before DER (Abeam PH) turn left - SOKAL - CHIDL - RAVON	

Change: MT, SID text

THIS CHART IS A PART OF NAVIGRAPH NDAC AND IS INTENDED FOR FLIGHT SIMULATION USE ONLY

SID **RNAV** East

Perth ACD 1	GND	TWR	APP	RAD	DEP	ATIS
118.55	121.7	120.5	123.6	135.25	118.7	113.7
132.95						123.8

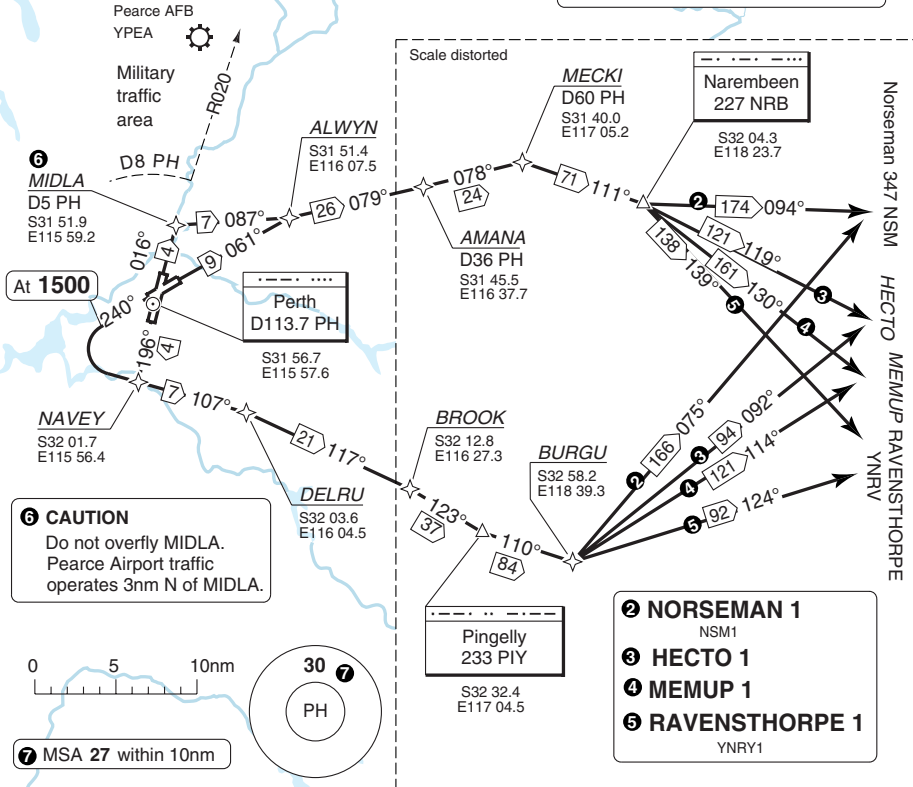
TA 10000 AD Elev 67

1 Airways Clearance Delivery

NAV
 GPS permitted instead of DME.
 Reference waypoint PH VOR.

JET only

SPEED
 MAX 210kt until MIDLA below 10000ft.



5-03

MNM CLIMB GRADIENT: 4% to 2800.

SID	RWY	Routeing
INITIAL CLIMB	03	Climb on 016° - MIDLA - ALWYN - AMANA - MECKI - NRB - follow SID
	06	Climb on 061° - ALWYN - AMANA - MECKI - NRB - follow SID
	21	Climb on 196° - NAVAY - DELRU - BROOK - PIY - BURGU - follow SID
	24	Climb on 240° - At 1500 turn left - NAVAY - DELRU - BROOK - PIY - BURGU - follow SID
NORSEMAN 1	NSM	
HECTO 1	HECTO	
MEMUP 1	MEMUP	
RAVENSTHORPE 1	YNRV	

Change: MT, SID text

Perth ACD 1	GND	TWR	APP	RAD	DEP	ATIS
118.55	121.7	120.5	123.6	135.25	118.7	113.7
132.95						123.8

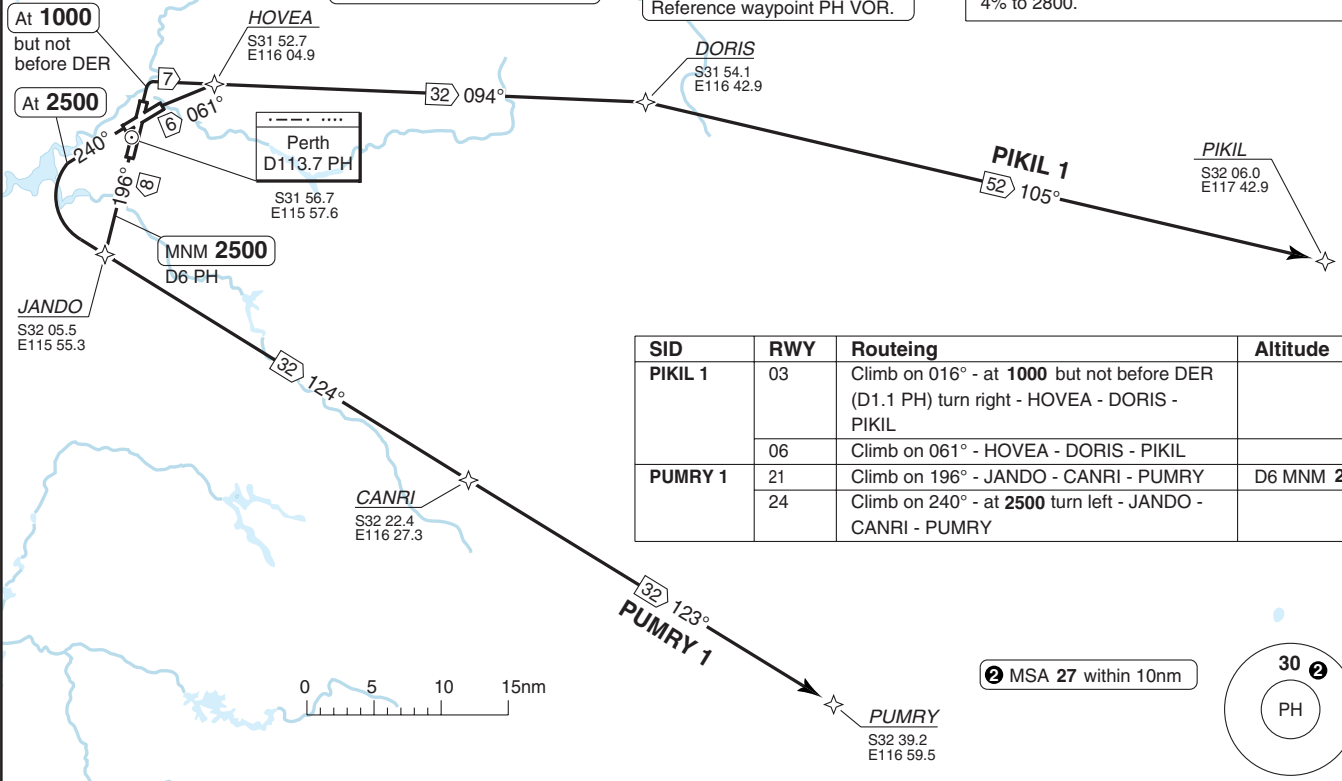
TA 10000 AD Elev 67

1 Airways Clearance Delivery

PROP only

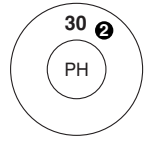
NAV
 GPS permitted instead of DME.
 Reference waypoint PH VOR.

SPEED:
 MAX 150kt below 4000ft.
 MAX 180kt between 4000ft to 10000ft.
MNM CLIMB GRADIENT: (PIKIL 1)
 4% to 2800.



SID	RWY	Routeing	Altitude
PIKIL 1	03	Climb on 016° - at 1000 but not before DER (D1.1 PH) turn right - HOVEA - DORIS - PIKIL	
	06	Climb on 061° - HOVEA - DORIS - PIKIL	
PUMRY 1	21	Climb on 196° - JANDO - CANRI - PUMRY	D6 MNM 2500
	24	Climb on 240° - at 2500 turn left - JANDO - CANRI - PUMRY	

2 MSA 27 within 10nm



SID RNAV South

Perth ACD 1	GND	TWR	APP	RAD	DEP	ATIS
118.55	121.7	120.5	123.6	135.25	118.7	113.7
132.95						123.8

TA 10000 AD Elev 67

1 Airways Clearance Delivery

2 **MIDLA**
 D5 PH
 S31 51.9
 E115 59.2

2 CAUTION
 Do not overfly MIDLA.
 Pearce Airport traffic
 operates 3nm N of MIDLA.

GALLI
MNM 4000
 S31 50.9
 E115 51.1

At 1000
 but not
 before DER

Perth
 D113.7 PH
 S31 56.7
 E115 57.6

SWANN
 S32 00.8
 E115 49.2

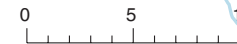
MNM 2500
 D6 PH

NAV
 GPS permitted instead of DME.
 Reference waypoint PH VOR.

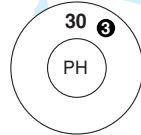
JANDO
 S32 05.5
 E115 55.3

MOCUR
 D18 PH
 S32 13.1
 E116 07.3

MANDU 1



3 MSA 27 within 10nm



MANDU
 D36 PH
 S32 31.4
 E115 46.5

SOLUS
 D36 PH
 S32 28.9
 E116 16.7

30 - 7

Aeronautical Data © Australian Airservices

© Navtech - ypph07daorg0

SPEED: MAX 250kt below 10000ft.

SID	RWY	MNM Climb	Routing	Altitude
MANDU 1	03		Climb on 016° - MIDLA - GALLI - SWANN - MANDU	GALLI MNM 4000
	06		Climb on 060° - at 1000 but not before DER (D1.3 PH) turn left - MIDLA - GALLI - SWANN - MANDU	
	21	3.7% to 2800	Climb on 196° - JANDO - MANDU	D6 MNM 2500
	24		Climb on 240° - SWANN - MANDU	
SOLUS 1	03		Climb on 016° - MIDLA - GALLI - SWANN - JANDO - MOCUR - SOLUS	GALLI MNM 4000
	06		Climb on 060° - at 1000 but not before DER (D1.3 PH) turn left - MIDLA - GALLI - SWANN - JANDO - MOCUR - SOLUS	
	21	3.7% to 2800	Climb on 196° - JANDO - MOCUR - SOLUS	D6 MNM 2500
	24		Climb on 240° - SWANN - JANDO - MOCUR - SOLUS	

Change: MNM Climb

THIS CHART IS A PART OF NAVIGRAPH NDAC AND IS INTENDED FOR FLIGHT SIMULATION USE ONLY

SID **RNAV** West

Perth ACD ①	GND	TWR	APP	RAD	DEP	ATIS
118.55	121.7	120.5	123.6	135.25	118.7	113.7
132.95						123.8

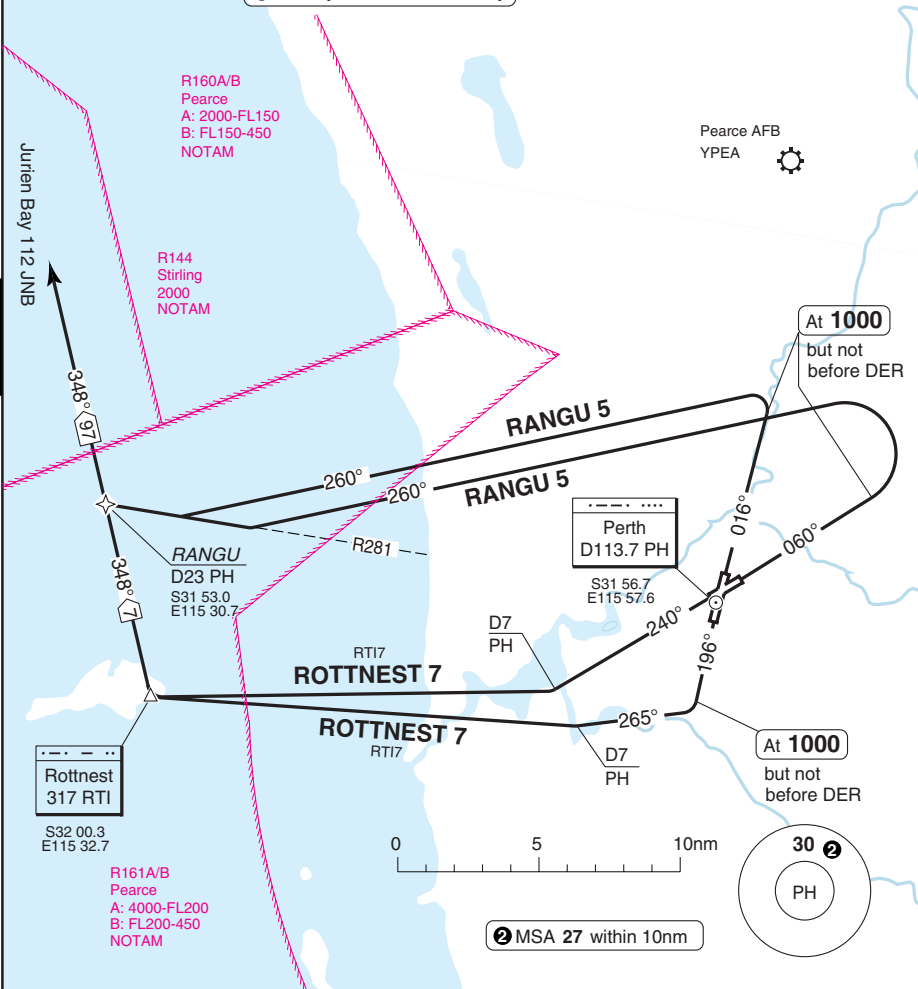
PROP only

TA 10000 AD Elev 67

① Airways Clearance Delivery

Aeronautical Data © Australian Airservices

30 - 8



SPEED: MAX 150kt below 4000ft
 MAX 180kt between 4000ft to 10000ft.

SID	RWY	MNM Climb	Routeing
RANGU 5	03		Climb on 016° - at 1000 but not before DER (D1.1 PH) turn left on 260° - Intcp R281 PH - RANGU - JNB
	06		Climb on 060° - at 1000 but not before DER (D1.3 PH) turn left on 260° - Intcp R281 PH - RANGU - JNB
ROTTNEST 7	21	3.7% to 2800	Climb on 196° - at 1000 but not before DER (D0.8 PH) turn right on 265° - at D7 PH turn right - RTI - JNB
	24		Climb on 240° - at D7 PH turn right - RTI - JNB

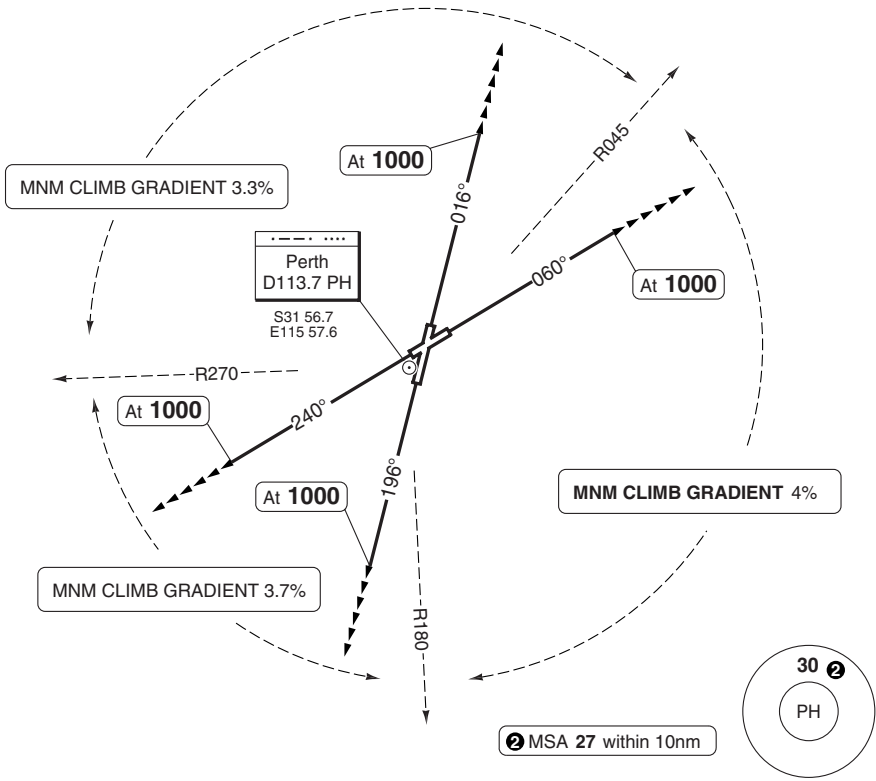
Change: MNM Climb

SID RADAR PERTH 4

Perth ACD ❶ 118.55 132.95	GND 121.7	TWR 120.5	APP 123.6	RAD 135.25	DEP 118.7	ATIS 113.7 123.8
---------------------------------	--------------	--------------	--------------	---------------	--------------	------------------------

TA 10000 | AD Elev 67 | Chart not to scale

❶ Airways Clearance Delivery



SPEED: MAX 250kt below 10000ft.
For NON-JET below 34000kg 140kt-150kt to 4000ft and then 170kt-180kt between 4000ft to 10000ft.

SID	RWY	MNM Climb	Routeing
PERTH 4	03	3.3%	Climb on 016° - at 1000 (but not before DER) - turn to assigned HDG - Contact DEP for radar vectoring.
	06	4%	Climb on 060° - at 1000 (but not before DER) - turn to assigned HDG - Contact DEP for radar vectoring.
	21	3.7%	Climb on 196° - at 1000 (but not before DER) - turn to assigned HDG - Contact DEP for radar vectoring.
	24	3.7%	Climb on 240° - at 1000 (but not before DER) - turn to assigned HDG - Contact DEP for radar vectoring.

COM FAILURE:

In event of RCF squawk 7600, maintain last assigned vector for 2min, and if necessary climb to MSA to maintain terrain clearance, then proceed in accordance with the latest ATC route clearance acknowledged.

Change: MNM climb

THIS CHART IS A PART OF NAVIGRAPH NDAC AND IS INTENDED FOR FLIGHT SIMULATION USE ONLY

40 - 2 WEF 08 MAR 12

40 - 2 08 FEB 12

Australia - YPPH / PER
PERTH

STAR RNAV CONN1 4A/4B/4Z

Pea CEN 123.3	Perth APP 123.6	RAD 135.25	TWR 120.5	GND 121.7	ATIS 113.7 123.8
------------------	--------------------	---------------	--------------	--------------	------------------------

TL ATC AD Elev 67

PROP only

SPEED
MAX 250kt below 10000ft

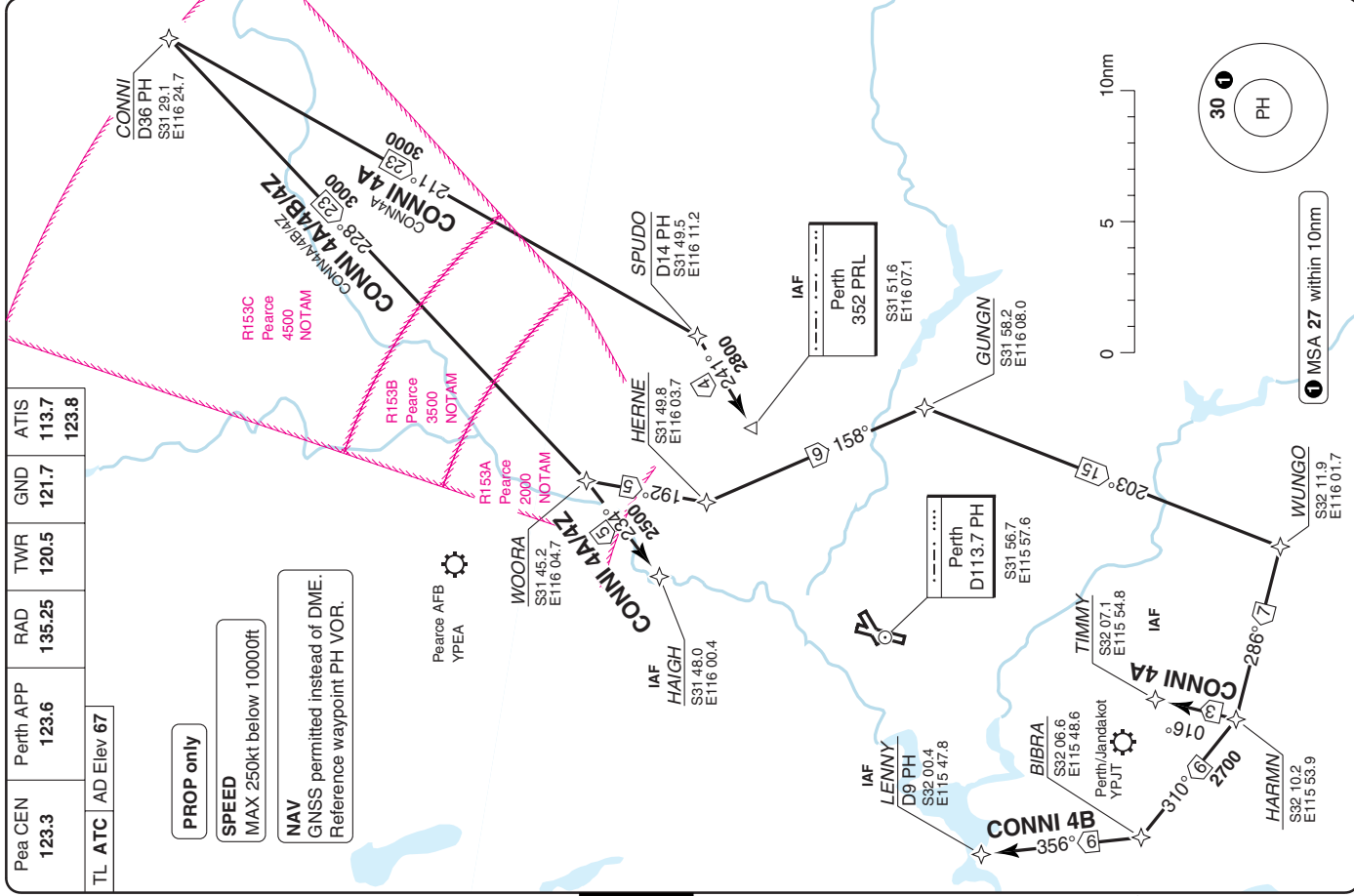
NAV
GNS permitted instead of DME.
Reference waypoint PH VOR.

Peaerce AFB
YPEA

Aeronautical Data © Australian Airservices

40 - 2

© Navtech - ypph02aarg0



Change: Redesignated, note, freq

THIS CHART IS A PART OF NAVIGRAPH NDAC AND IS INTENDED FOR FLIGHT SIMULATION USE ONLY

Pea CEN 123.3	Perth APP 123.6	RAD 135.25	TWR 120.5	GND 121.7	ATIS 113.7
					123.8

TL ATC AD Elev 67

PROP only

SPEED
MAX 250kt below 10000ft

NAV
GNSS permitted instead of DME.
Reference waypoint PH VOR.

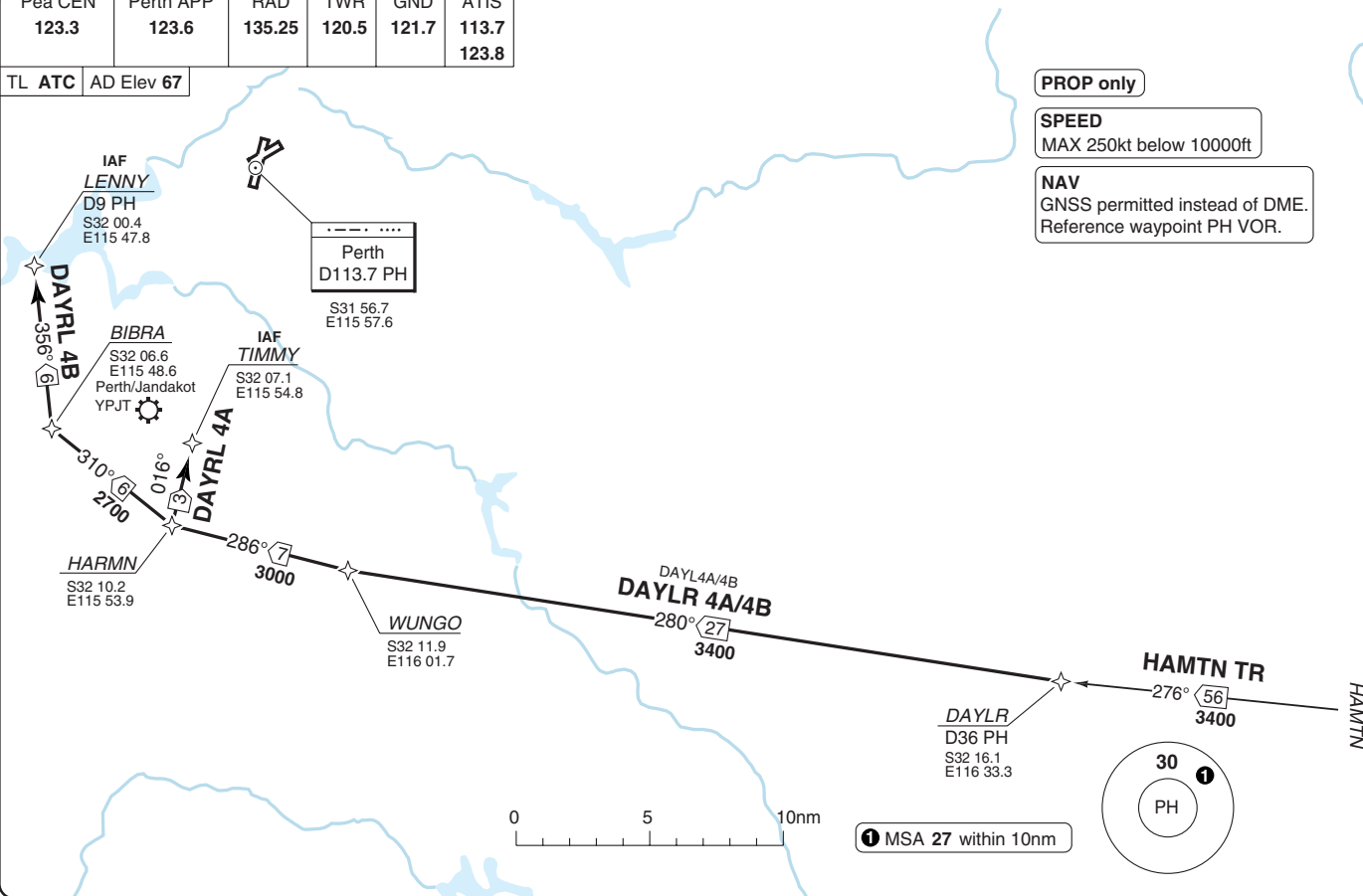
Perth
D113.7 PH
S31 56.7
E115 57.6

STAR
RNAV DAYLR 4A/4B

40 - 3 | 08 FEB 12

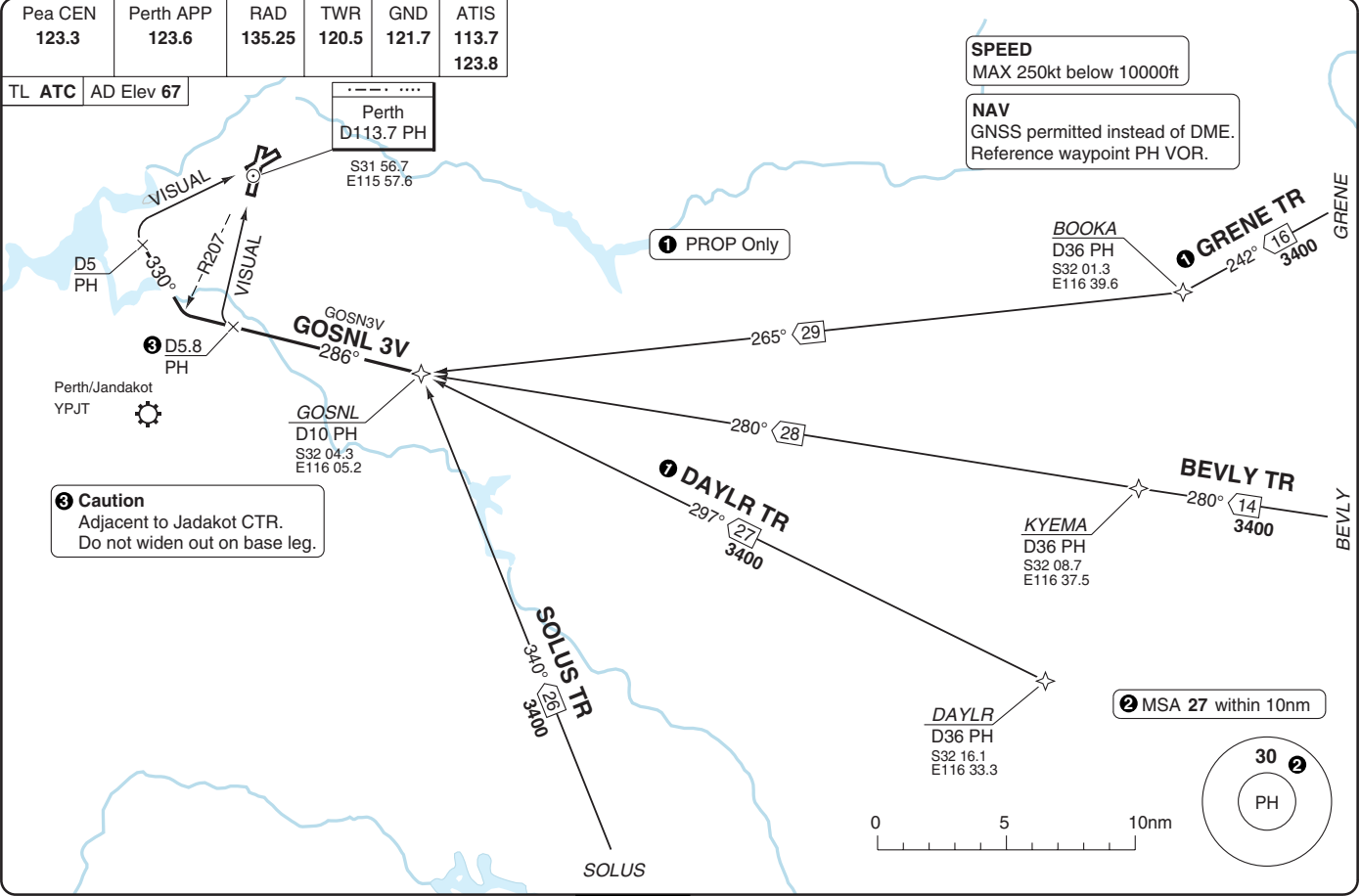
Australia - YPPH / PER

PERTH



THIS CHART IS A PART OF NAVIGRAPH NDAC AND IS INTENDED FOR FLIGHT SIMULATION USE ONLY

Change: Redesignated note, freq



STAR RNAV JULIM 5A/5B/5Z

PERTH

Pea CEN 123.3	Perth APP 123.6	RAD 135.25	TWR 120.5	GND 121.7	ATIS 113.7 123.8
------------------	--------------------	---------------	--------------	--------------	------------------------

TL ATC AD Elev 67

JET only

SPEED

MAX 250kt below 10000ft

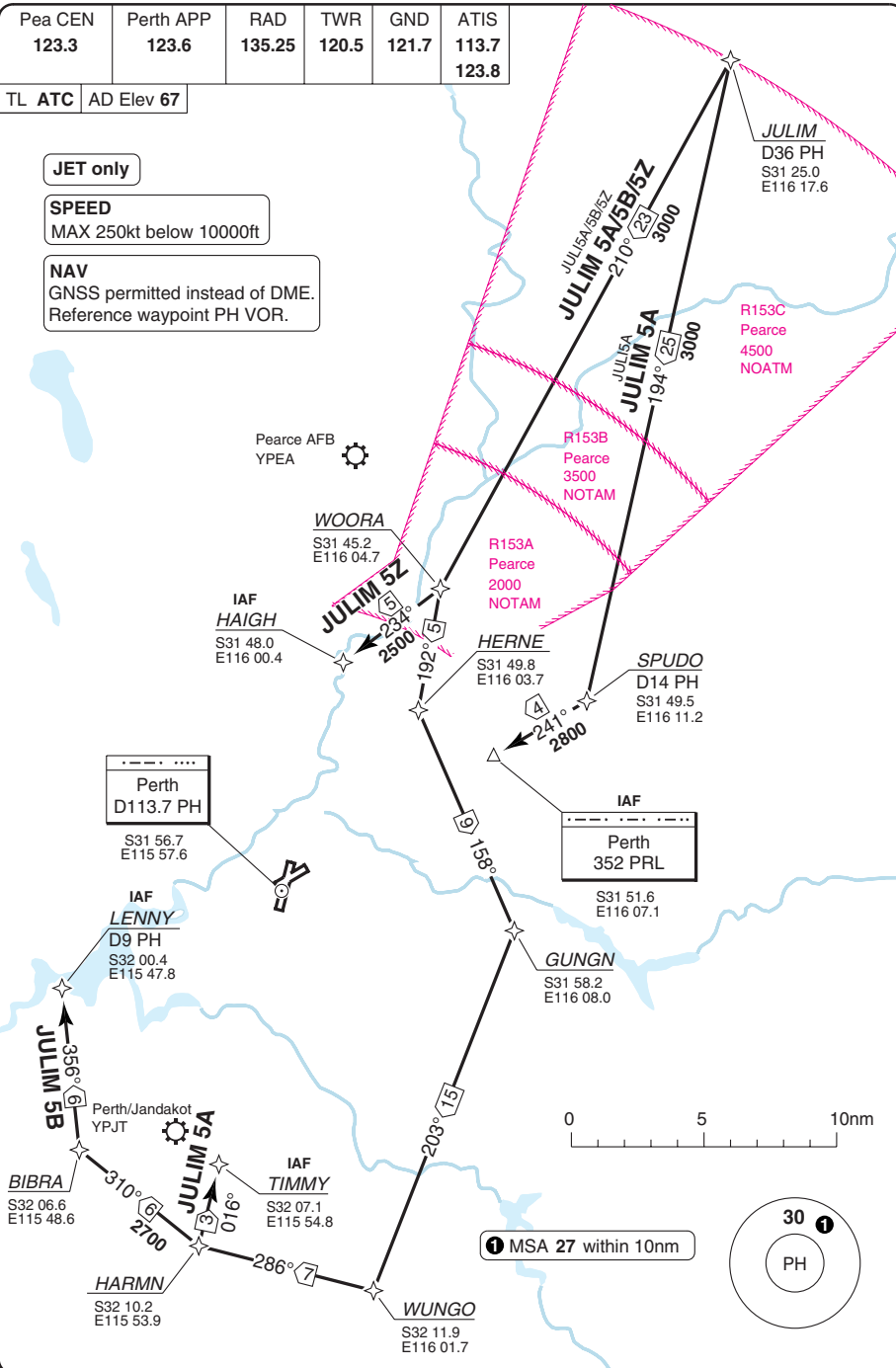
NAV

GNSS permitted instead of DME.
Reference waypoint PH VOR.

Aeronautical Data © Australian Airservices

40 - 6

© Navtech - ypph06aaorg0



Change: Redesignated, note, freq

THIS CHART IS A PART OF NAVIGRAPH NDAC AND IS INTENDED FOR FLIGHT SIMULATION USE ONLY

STAR RNAV SOLUS 4A/4B/4Z

PERTH

Pea CEN 123.3	Perth APP 123.6	RAD 135.25	TWR 120.5	GND 121.7	ATIS 113.7 123.8
------------------	--------------------	---------------	--------------	--------------	------------------------

TL ATC AD Elev 67

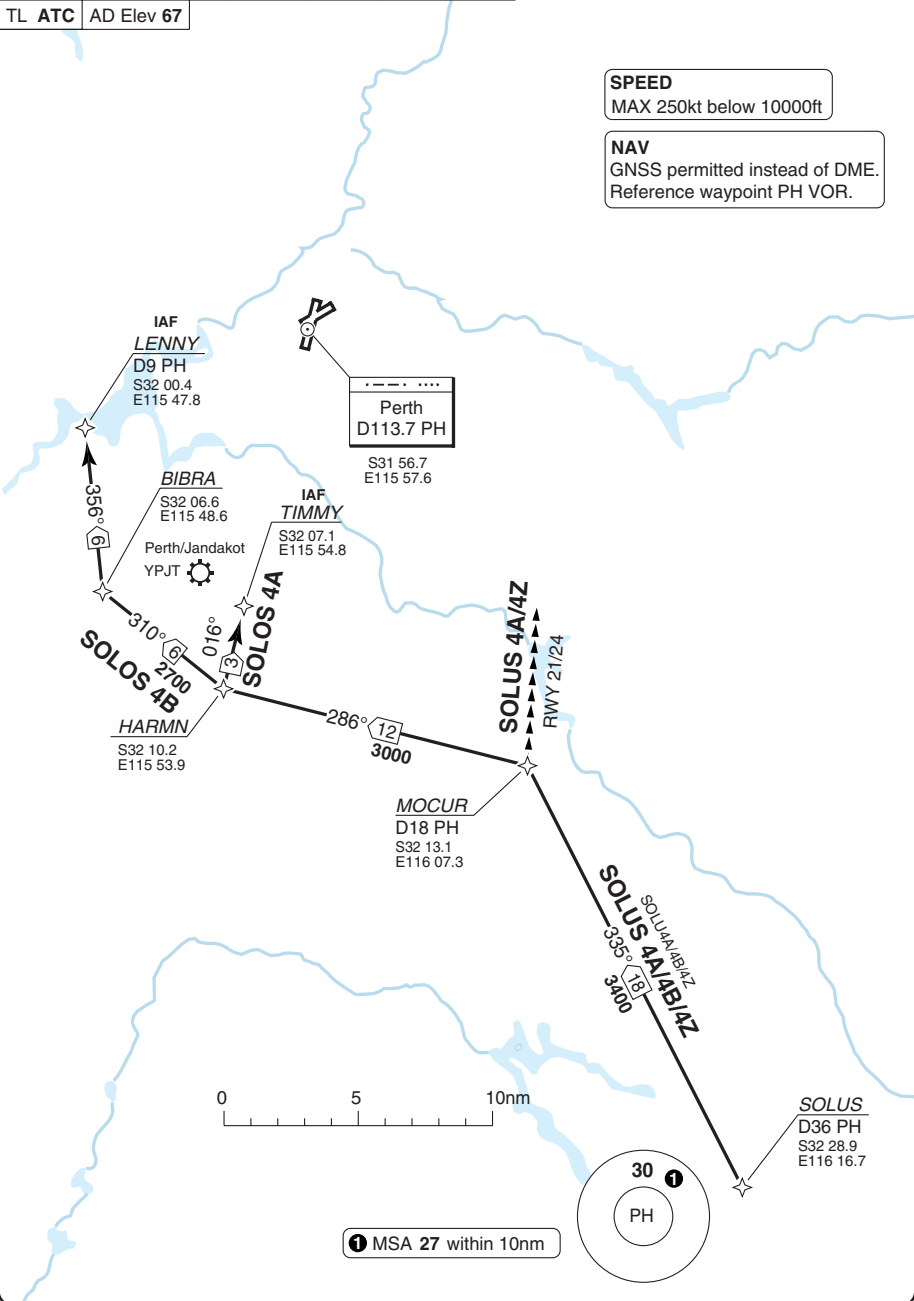
SPEED
MAX 250kt below 10000ft

NAV
GNSS permitted instead of DME.
Reference waypoint PH VOR.

Aeronautical Data © Australian Airservices

© Navtech - ypph07aaorg0

40 - 7



Change: Redesignated, note, freq

THIS CHART IS A PART OF NAVIGRAPH NDAC AND IS INTENDED FOR FLIGHT SIMULATION USE ONLY

WEF 08 MAR 12

40 - 8 | 08 FEB 12

Australia - YPPH / PER

STAR RNAV WAVES 6A/6B/6Z

PERTH

Pea CEN 123.3	Perth APP 123.6	RAD 135.25	TWR 120.5	GND 121.7	ATIS 113.7 123.8
------------------	--------------------	---------------	--------------	--------------	------------------------

TL ATC AD Elev 67

Pearce AFB
YPEA

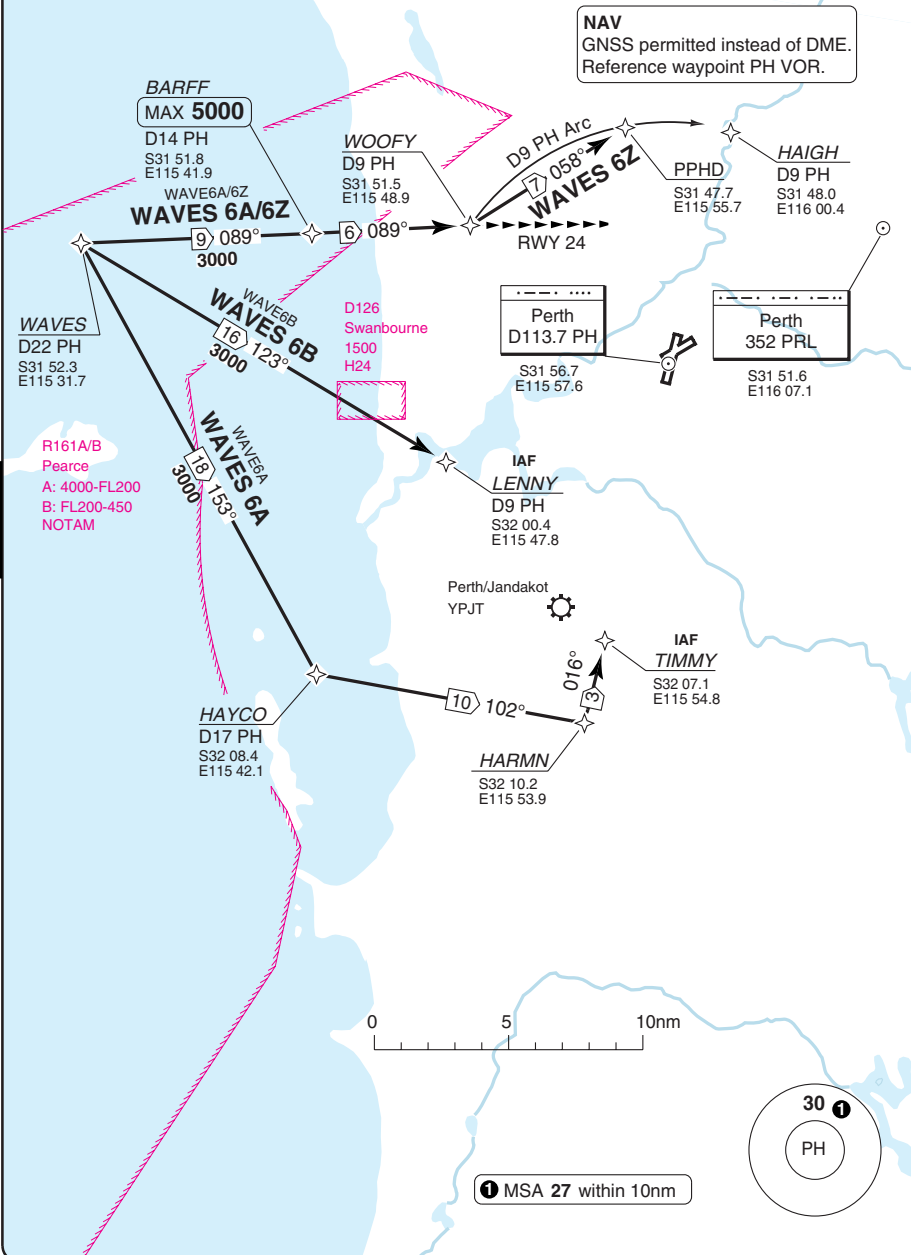
SPEED
MAX 250kt below 10000ft

NAV
GNSS permitted instead of DME.
Reference waypoint PH VOR.

Aeronautical Data © Australian Airservices

40 - 8

© Navtech - ypph08aaorg0



Change: Redesignated, note, freq

THIS CHART IS A PART OF NAVIGRAPH NDAC AND IS INTENDED FOR FLIGHT SIMULATION USE ONLY

STAR RNAV WOORA 2V

PERTH

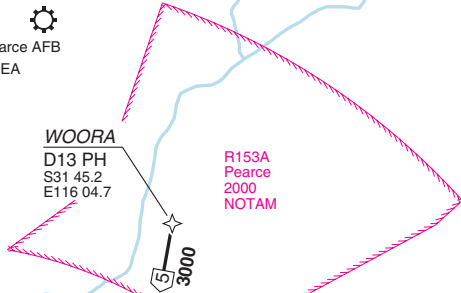
Pea CEN 123.3	Perth APP 123.6	RAD 135.25	TWR 120.5	GND 121.7	ATIS 113.7 123.8
------------------	--------------------	---------------	--------------	--------------	------------------------

TL ATC AD Elev 67


 Pearce AFB
 YPEA

SPEED
MAX 250kt below 10000ft

NAV
GNSS permitted instead of DME.
Reference waypoint PH VOR.



HERNE
S31 49.8
E116 03.7

WOORA 2V
WORO V
S 158°

GUNGN
S31 58.2
E116 08.0

GOSNL
D10 PH
S32 04.3
E116 05.2

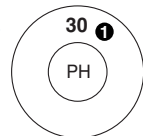
Perth
D113.7 PH
S31 56.7
E115 57.6

D5 PH

D5.8 PH

Perth/Jandakot
YPJT


2 Caution
Adjacent to Jandakot CTR.
Do not widen out on base leg.



1 MSA 27 within 10nm

0 5nm

Aeronautical Data © Australian Airservices

© Navitech - ypph09aaoorgo

40 - 9

Reverse side blank

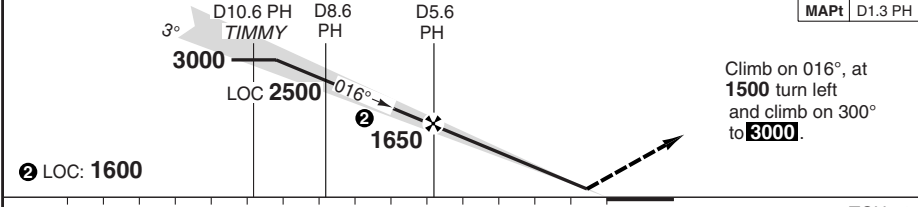
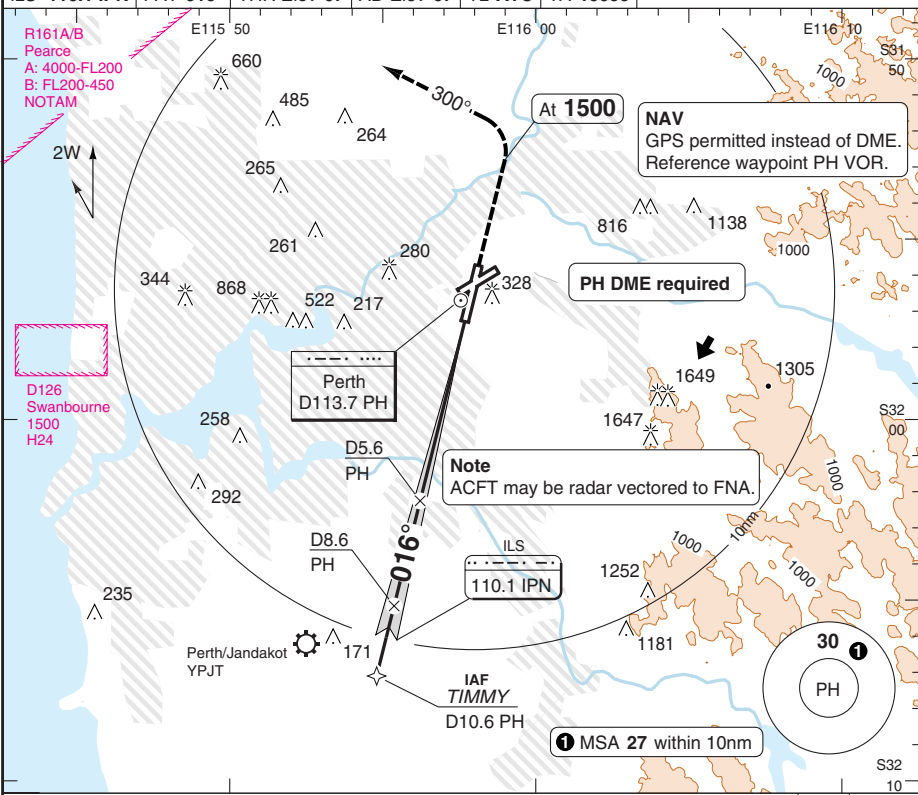
Change: Redesignated, note, freq

THIS CHART IS A PART OF NAVIGRAPH NDAC AND IS INTENDED FOR FLIGHT SIMULATION USE ONLY

ILS Y RWY 03

Perth APP 123.6	RAD 135.25	TWR 120.5	GND 121.7	ATIS 113.7 123.8
ILS 110.1 IPN		FAT 016°	THR Elev 67	AD Elev 67
TL ATC		TA 10000		

Aeronautical Data © Australian Airservices



ACFT	ILS+DME	LOC+DME	Circling	Incl A380	DME PH	3.0° ALT	LDA 3444x45 11299x147ft P 3°L/R (71)
A			760 (693) 2.4km b	b After LOC+DME: 760 (693) 2.5km	9.9	3000	<div style="writing-mode: vertical-rl; transform: rotate(180deg);"> G NALS </div>
B	320 (253)	520 (453)	1440 (1373) 4.0km c	c No Circling beyond 4nm PH East of RWY 03/21 and 06/24	8	2420	
C	1.5km a	2.5km	1440 (1373) 5.0km c		7	2100	
D				6	1780		
				5	1460		
				4	1140		
				3	820		
GS	80	100	120	140	160	2.1	520
ROD 3.0°	430	540	640	750	860		

Change: Minima

© Navtech - ypph01iaip00

50 - 1

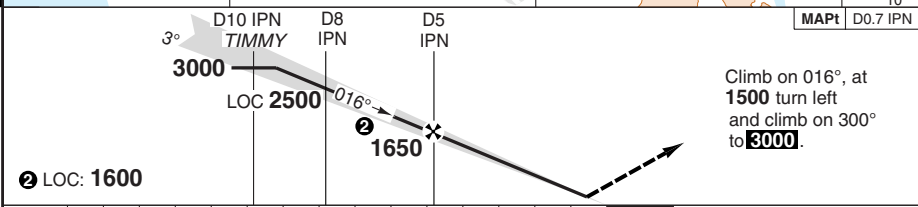
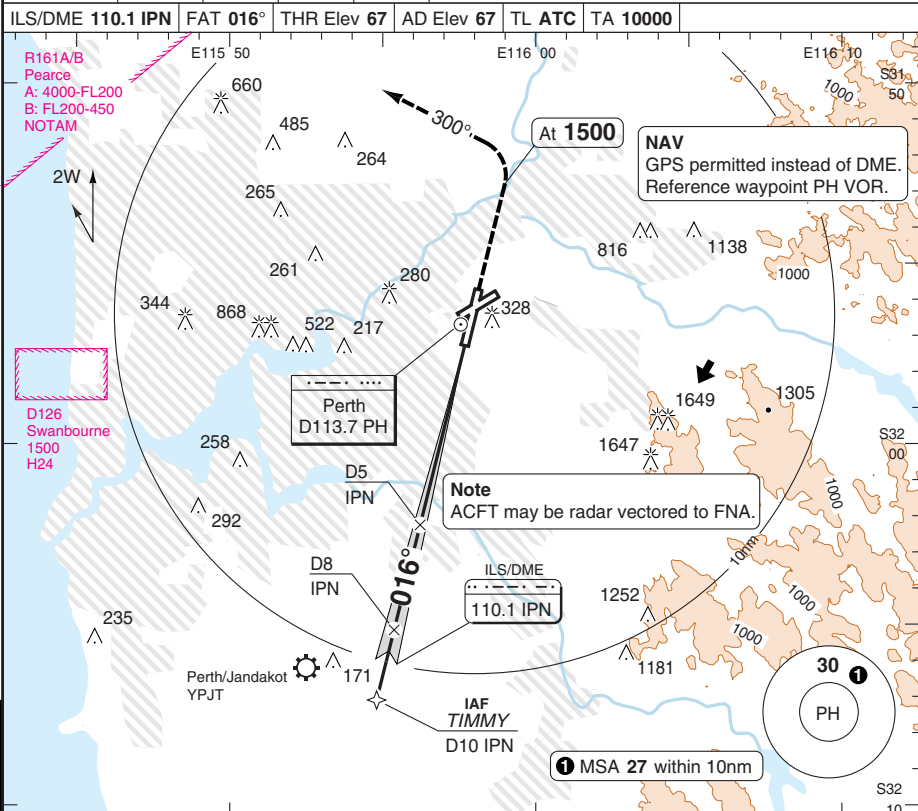
ILS Z RWY 03

Perth APP 123.6	RAD 135.25	TWR 120.5	GND 121.7	ATIS 113.7 123.8	
ILS/DME 110.1 IPN	FAT 016°	THR Elev 67	AD Elev 67	TL ATC	TA 10000

PANS OPS

Aeronautical Data © Australian Airservices

50 - 2



ACFT	ILS+DME	LOC+DME	Circling	Altitude	Distance
A			760 (693) 2.4km	3000	15nm
B	320 (253)	520 (453)	1440 (1373) 4.0km	2290	7nm
C	a		1440 (1373) 5.0km	1980	6nm
D				1660	5nm
				1340	4nm
				1020	3nm
				700	2nm
				520	1.5nm

© Navtech - ypph02aip00

Change: Minima

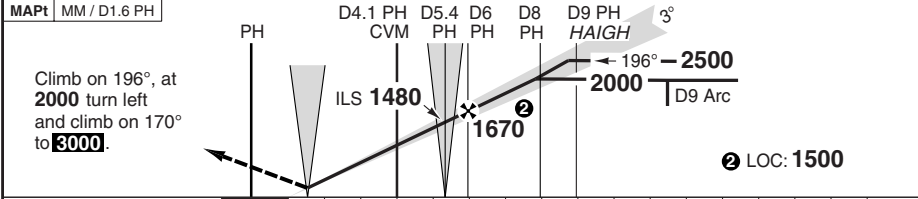
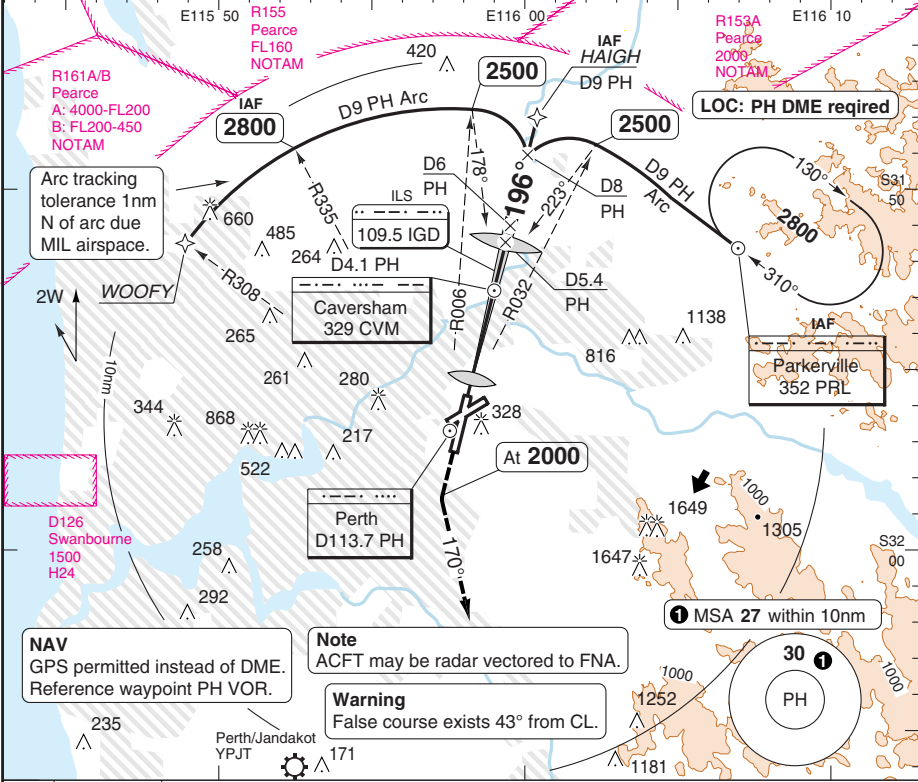
THIS CHART IS A PART OF NAVIGRAPH NDAC AND IS INTENDED FOR FLIGHT SIMULATION USE ONLY

ILS RWY 21

Perth APP 123.6	RAD 135.25	TWR 120.5	GND 121.7	ATIS 113.7 123.8
ILS 109.5 IGD	FAT 196°	THR Elev 43	AD Elev 67	TL ATC TA 10000

PANS OPS

Aeronautical Data © Australian Airservices



TCH 50					
ACFT	ILS	LOC+DME	Circling	a Incl A380.	
A	250 (207) 0.8km a	550 (507) 1.9km	760 (693) 2.4km	b No Circling beyond 4nm PH East of RWY 03/21 and 06/24	
B			1440 (1373) 4.0km b	DME 3.0° PH ALT	LDA 3444x45 11299x147ft P 3°L/R (71)
C			1440 (1373) 5.0km b	7 2000	
D				6 1680	
		5 1360			
		4 1030			
		3 710			
		2.5 550			
GS	80	100	120	140	160
ROD 3.0°	440	540	650	760	870

50 - 3

© Navtech - ypph03iap00

ILS RWY 24

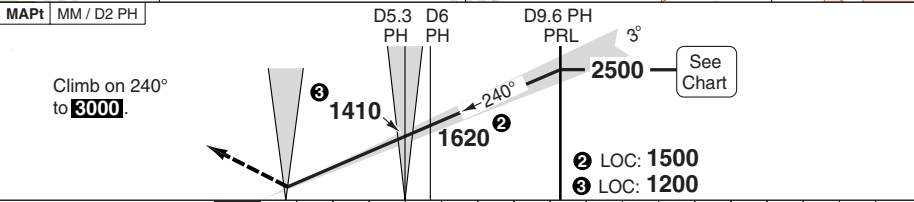
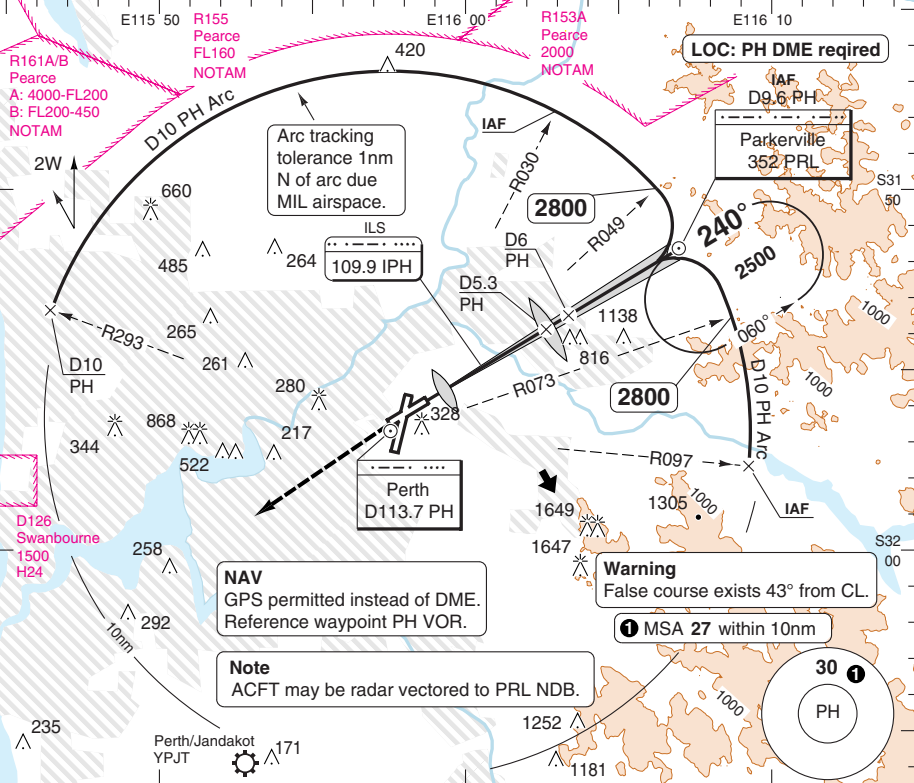
Perth APP 123.6	RAD 135.25	TWR 120.5	GND 121.7	DLV 118.55 132.95	ATIS 113.7 123.8
--------------------	---------------	--------------	--------------	-------------------------	------------------------

ILS 109.9 IPH	FAT 240°	THR Elev 58	AD Elev 67	TL ATC	TA 10000
---------------	----------	-------------	------------	--------	----------

PANS OPS

Aeronautical Data © Australian Airservices

50 - 4



TCH 51	0	1	2	3	4	5	6	7	8	9	10	11	12	13	14	15	16	17	nm
--------	---	---	---	---	---	---	---	---	---	---	----	----	----	----	----	----	----	----	----

ACFT	ILS	LOC+DME	Circling
A	260 (202) 0.8km a	550 (492) 1.8km	760 (693) 2.4km
B			1440 (1373) 4.0km b
C			1440 (1373) 5.0km b
D			

① Incl A380

② No Circling beyond 4nm PH East of RWY 03/21 and 06/24

DME PH	2.8° ALT	LDA 2136x45 7007x147ft P 3°L/R (71)
9.4	2500	<p>FALS</p>
8	2090	
7	1800	
6	1500	
5	1210	
4	910	
3	620	
2.8	550	

GS	80	100	120	140	160
ROD 2.8°	400	500	600	700	790

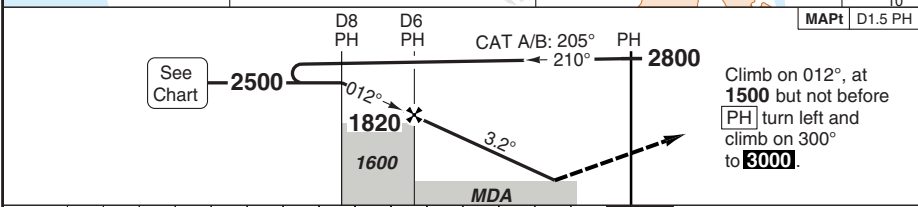
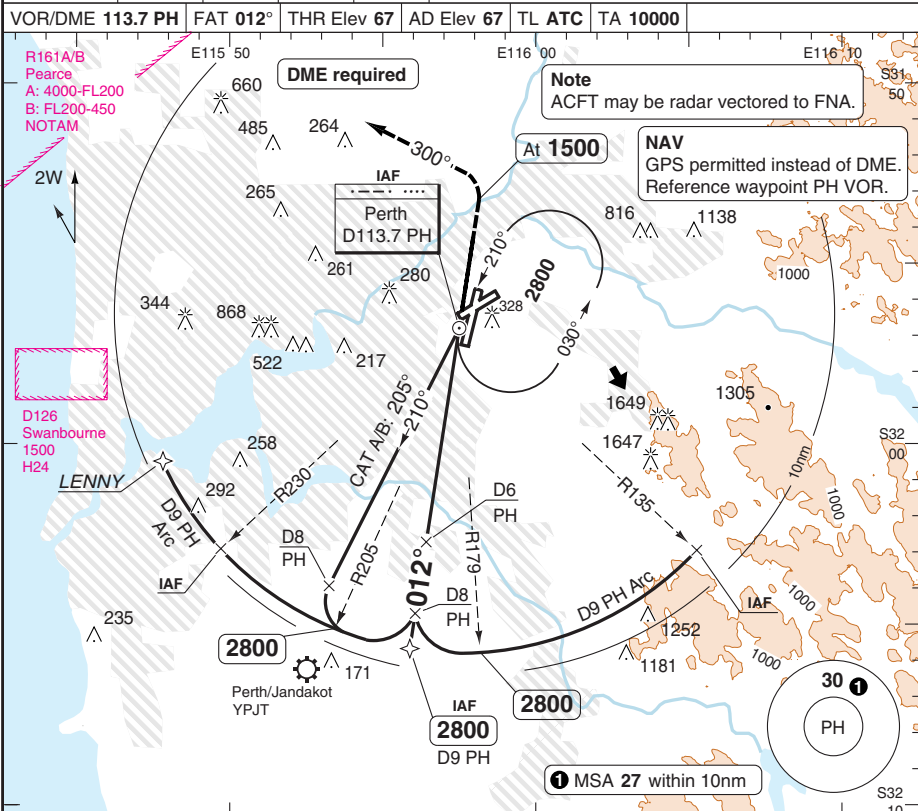
Change: Minima

© Navtech - ypph04iap00

VOR RWY 03

Perth APP 123.6	RAD 135.25	TWR 120.5	GND 121.7	ATIS 113.7 123.8
VOR/DME 113.7 PH		FAT 012°	THR Elev 67	AD Elev 67
		TL ATC	TA 10000	

Aeronautical Data © Australian Airservices



ACFT		VOR+DME	Circling	ⓐ No Circling beyond 4nm PH East of RWY 03/21 and 06/24	DME PH	3.1° ALT	LDA 3444x45 11299x147ft P 3°L/R (71)
A		520 (453) 2.6km	760 (693) 2.6km		8	2500	
B			1440 (1373) 4.0km ⓐ		7	2170	
C			1440 (1373) 5.0km ⓐ		6	1840	
D				5	1510		
					4	1180	
					3	840	
					2.0	520	

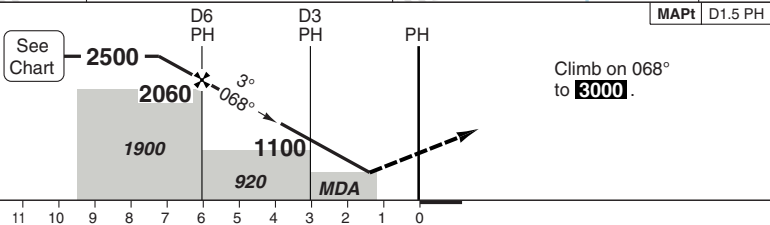
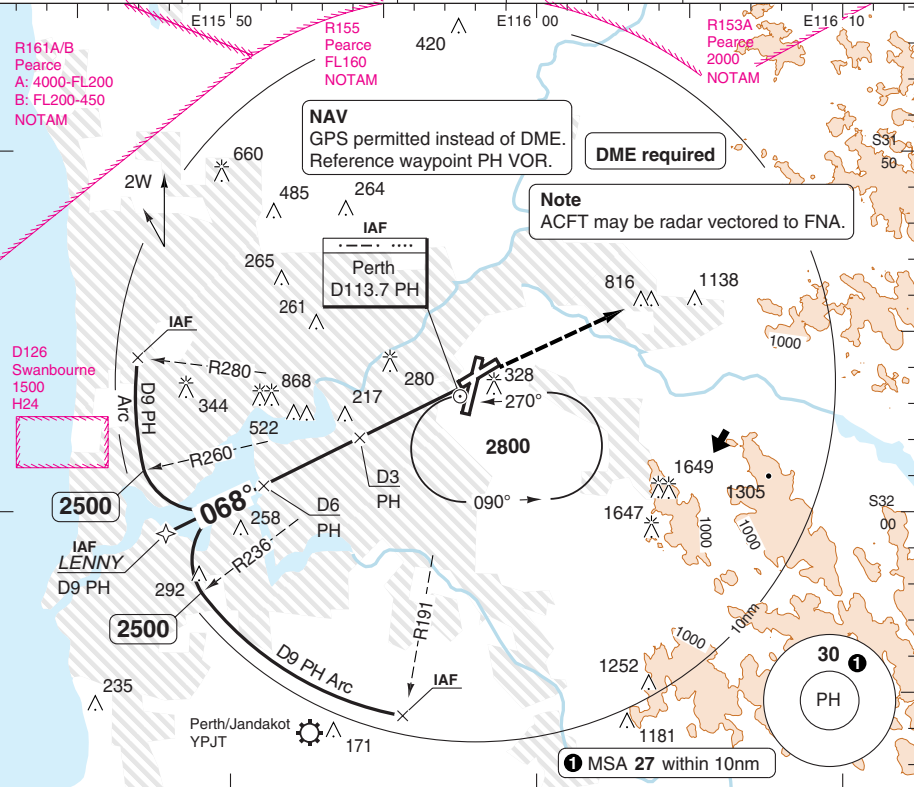
VOR RWY 06

Perth APP 123.6	RAD 135.25	TWR 120.5	GND 121.7	ATIS 113.7 123.8	
VOR/DME 113.7 PH		FAT 068°	THR Elev 58	AD Elev 67	TL ATC TA 10000

PANS OPS

Aeronautical Data © Australian Airservices

50 - 9



ACFT	VOR+DME	Circling
A		760 (693) 3.2km
B	620 (562)	
C	3.2km	1440 (1373) 4.0km a
D		1440 (1373) 5.0km a

a No Circling beyond 4nm PH East of RWY 03/21 and 06/24

DME PH	2.9° ALT	LDA 2163x45 7096x147ft P 3° (64)
6	2060	
5	1750	
4	1440	
3	1130	
2	820	
1.4	620	

GS	80	100	120	140	160
ROD 2.9°	420	530	630	730	840

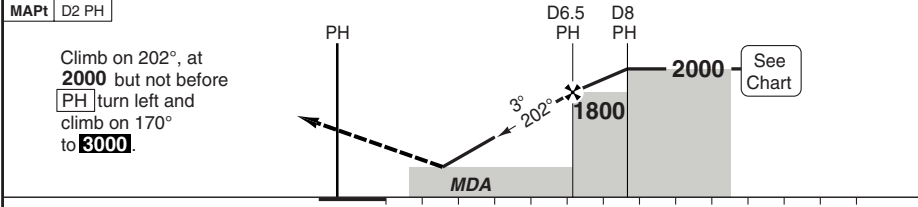
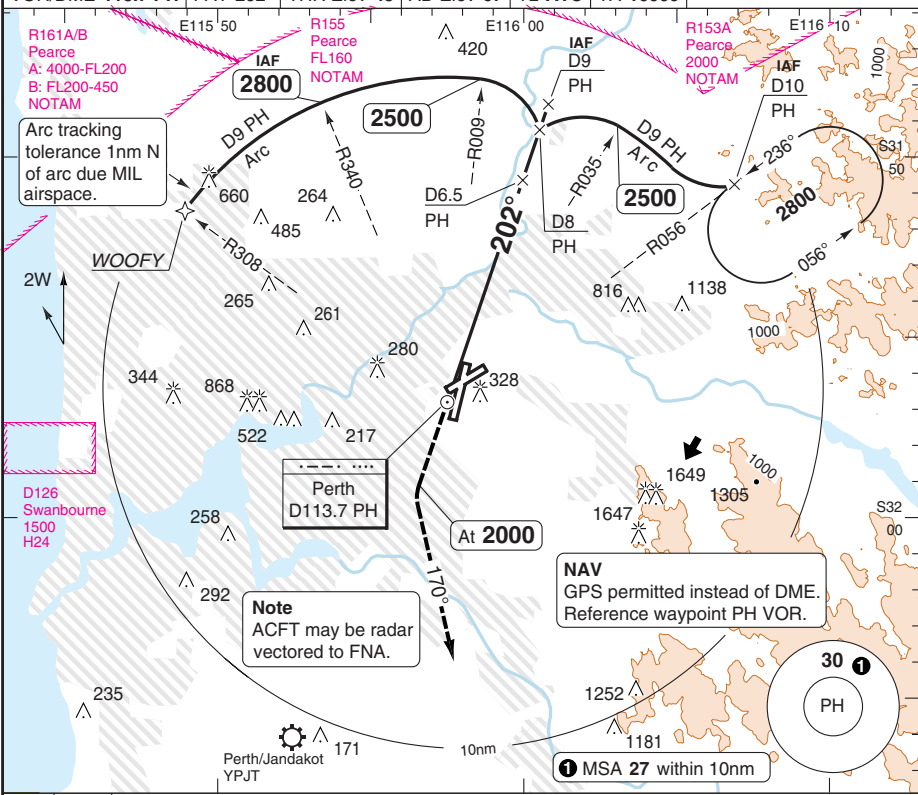
Change: OBST, Minima, APL box

VOR RWY 21

Perth APP 123.6	RAD 135.25	TWR 120.5	GND 121.7	ATIS 113.7 123.8
VOR/DME 113.7 PH		FAT 202°	THR Elev 43	AD Elev 67
TL ATC		TA 10000		

PANS OPS

Aeronautical Data © Australian Airservices



MAPt D2 PH	Climb on 202°, at 2000 but not before PH turn left and climb on 170° to 3000.		No Circling beyond 4nm PH East of RWY 03/21 and 06/24		DME PH ALT		LDA 3444x45 11299x147ft P 3°L/R (71)	
STATE	ACFT	VOR+DME	Circling		3.0°	2000	G FALS	
	A	550 (507) 2.9km	760 (693) 2.9km	a	7.1	1650		
	B		1440 (1373) 4.0km		6	1330		
	C		1440 (1373) 5.0km		5	1010		
D			4		700			
GS	80	100	120	140	160	2.5	550	
ROD 3.0°	430	530	640	740	850			

50 - 7

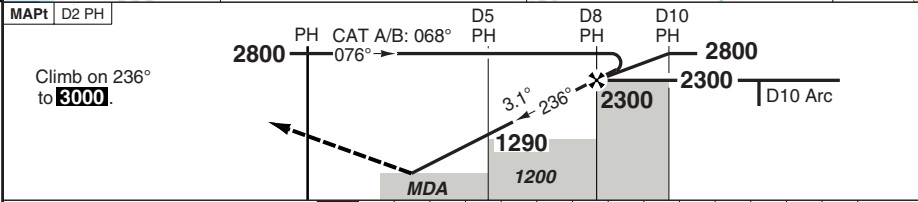
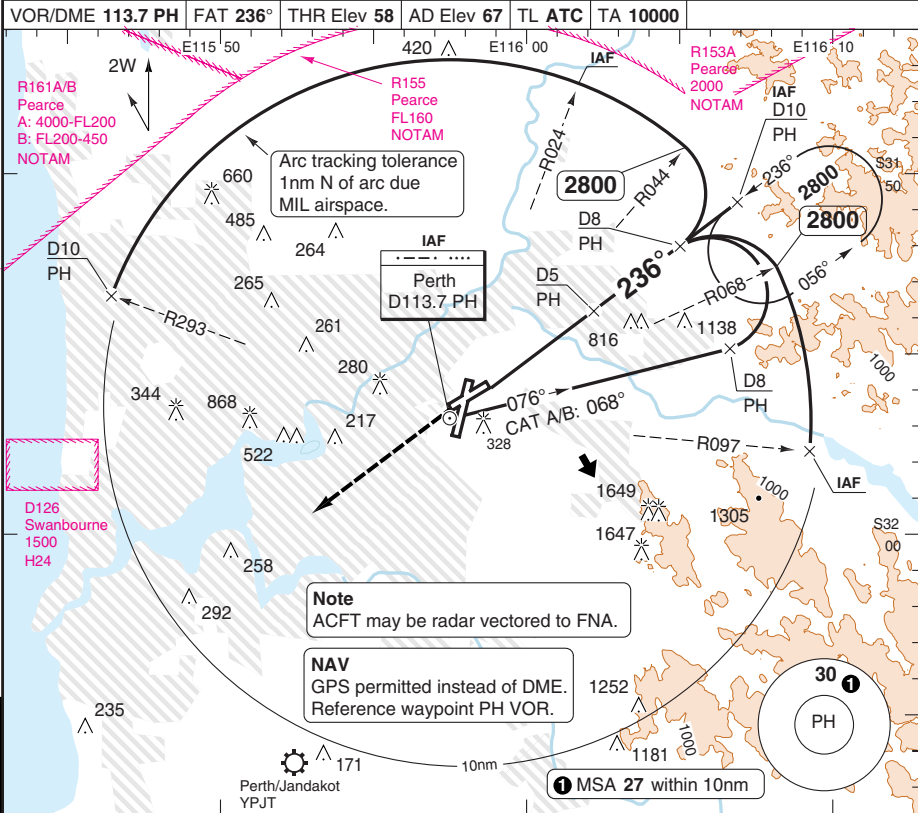
© Navtech - ypph07iaip00

Change: OBST, Minima

THIS CHART IS A PART OF NAVIGRAPH NDAC AND IS INTENDED FOR FLIGHT SIMULATION USE ONLY

VOR RWY 24

Perth APP 123.6	RAD 135.25	TWR 120.5	GND 121.7	ATIS 113.7 123.8
VOR/DME 113.7 PH	FAT 236°	THR Elev 58	AD Elev 67	TL ATC TA 10000



ACFT	VOR+DME	Circling	a No Circling beyond 4nm PH East of RWY 03/21 and 06/24	DME	3.1°	LDA 2136x45 7007x147ft P 3°L/R (71)	
A	560 (502) 2.8km	760 (693) 2.8km		PH	ALT		
B		1440 (1373) 4.0km a		8	2320		
C		1440 (1373) 5.0km a		7	1990		
D			6	1660			
GS	80	100	120	140	160	5	1330
ROD 3.1°	450	560	670	780	890	4	1000
						3	670
						2.7	560

© Navtech - ypph08iap00

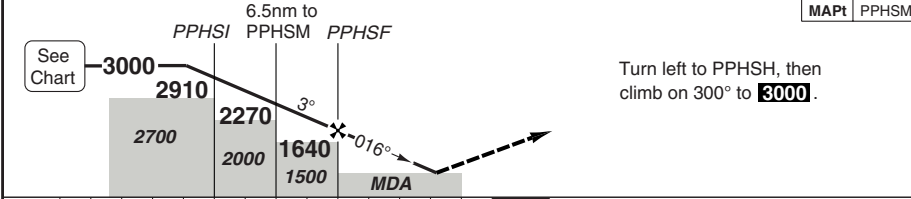
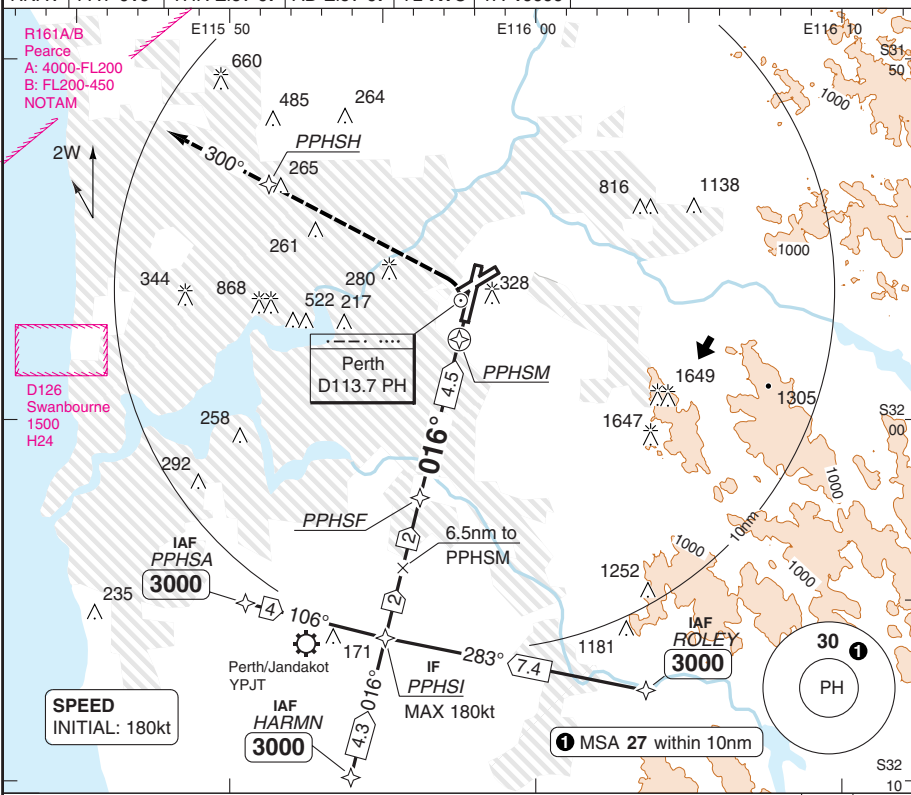
RNAV (GNSS) RWY 03

PERTH

Perth APP 123.6	RAD 135.25	TWR 120.5	GND 121.7	ATIS 113.7 123.8
RNAV	FAT 016°	THR Elev 67	AD Elev 67	TL ATC
TA 10000				

PANS OPS

Aeronautical Data © Australian Airservices



nm	14	13	12	11	10	9	8	7	6	5	4	3	2	1	0
ACFT	LNAV		Circling		a No Circling beyond 4nm PH East of RWY 03/21 and 06/24										
A	560 (493)		760 (693)												
B	2.7km		2.7km												
C			1440 (1373)												
D	NA		NA												
GS	80	100	120	140	160										
ROD 3.0°	430	530	640	750	850										
THR	03	3.0°	ALT		LDA 3444x45 11299x147ft P 3°L/R (71)										
8.5	2910														
7	2440														
6	2120														
5	1800														
4	1490														
3	1170														
2	850														
1.1	560														

50 - 9

© Navtech - ypph09aip00

NALS

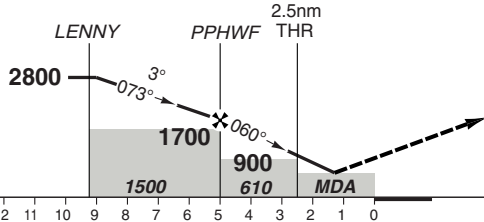
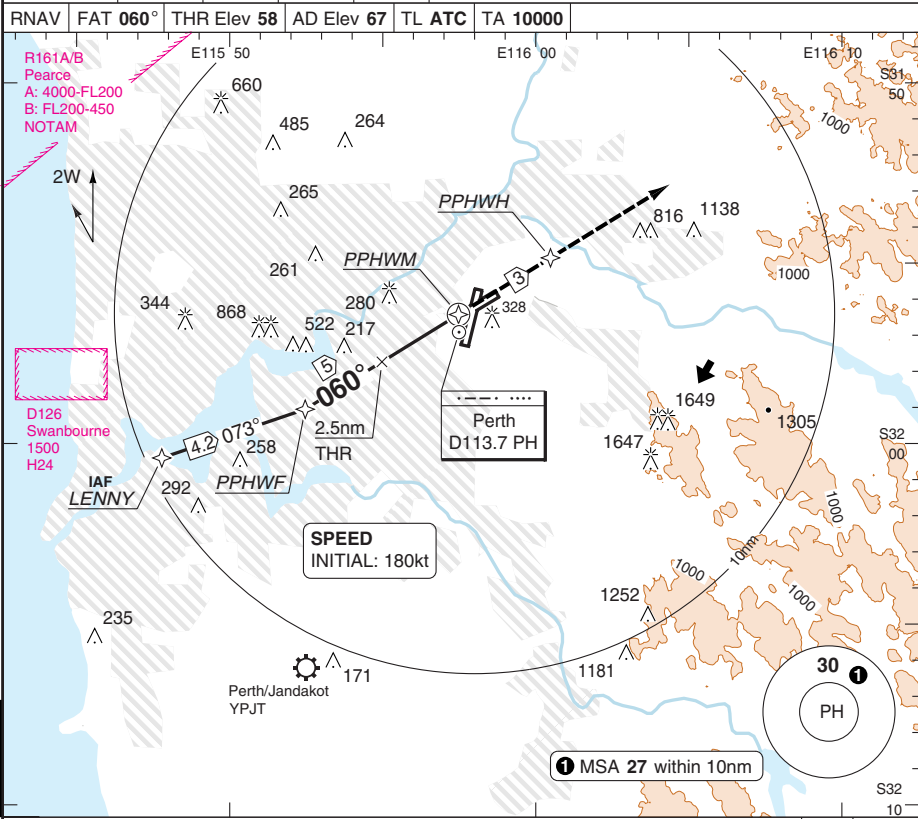
RNAV (GNSS) RWY 06

Perth APP 123.6	RAD 135.25	TWR 120.5	GND 121.7	ATIS 113.7 123.8
RNAV	FAT 060°	THR Elev 58	AD Elev 67	TL ATC
TA 10000				

PANS OPS

Aeronautical Data © Australian Airservices

50 - 10



Climb on 060° to PPHWH to **3000**.

MAP1 PPHWH

ACFT	LNAV	Circling	No Circling beyond 4nm PH East of RWY 03/21 and 06/24					THR	3.0° ALT	LDA 2163x45 7096x147ft P 3°(64)
A	500 (442) 2.8km	760 (693) 2.8km	5	4	3	2	1	0	5	1700
B		1440 (1373) 4.0km a							4	1380
C		1440 (1373) 5.0km a							3	1060
D									2	750
GS	80	100	120	140	160					G
ROD 3.0°	420	530	640	740	850					

© Navtech - ypph10aip00

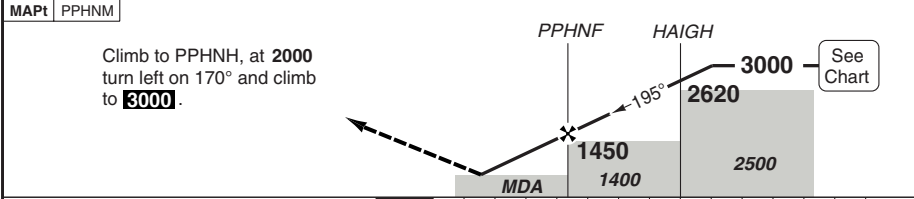
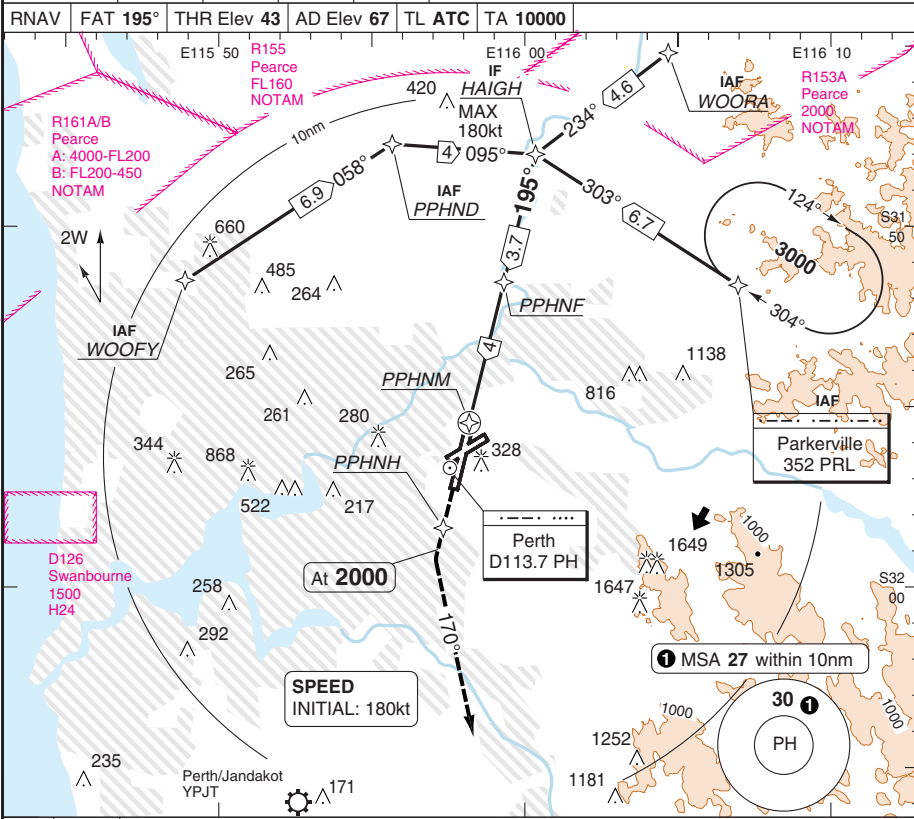
Change: Minima

RNAV (GNSS) RWY 21

Perth APP 123.6	RAD 135.25	TWR 120.5	GND 121.7	ATIS 113.7 123.8
RNAV	FAT 195°	THR Elev 43	AD Elev 67	TL ATC
TA 10000				

PANS OPS

Aeronautical Data © Australian Airservices



ACFT	LNAV	Circling	a No Circling beyond 4nm PH East of RWY 03/21 and 06/24	THR	3.0°	LDA 3444x45	
A	560 (517) 2.9km	760 (693) 2.9km		21	ALT	11299x147ft	
B		1440 (1373) 4.0km		7.7	2620	P 3°L/R (71) G FALS	
C		1440 (1373) 5.0km		7	2400		
D			6	2090			
GS	80	100	120	140	160		5
ROD 3.0°	430	530	640	740	850	4	1460
						3	1140
						2	820
						1.2	560

50 - 11

© Navtech - ypph11aip00

JAR-OPS Landing Minima

PERTH

The following Minima is for Public Transport aircraft and conforms to JAR-OPS1 regulations.

STRAIGHT-IN APPROACH		C				D			
R/W	Procedure	DA/ MDA QNH ft	DH/ MDH QFE ft	VIS m	VIS No ALS m	DA/ MDA QNH ft	DH/ MDH QFE ft	VIS m	VIS No ALS m
03	ILS/DME Y, Z	320	260	1500	N/A	320	260	1500	N/A
03	LOC/DME Y, Z	520	460	2500	N/A	520	460	2500	N/A
03	VOR/DME	520	460	2600	N/A	520	460	2600	N/A
03	RNAV (GNSS)	560	500	2700	N/A	N/A	N/A	N/A	N/A
06	VOR/DME	620	570	3200	N/A	620	570	3200	N/A
21	ILS (1)	250	210	800	1500	250	210	800	1500
21	LOC/DME	550	510	1900	2800	550	510	1900	2800
21	VOR/DME	550	510	2900	3800	550	510	2900	3800
21	RNAV (GNSS)	560	520	2900	3800	560	520	2900	3800
24	ILS (1)	260	210	800	1500	260	210	800	1500
24	LOC/DME	550	500	1800	2700	550	500	1800	2700
24	VOR/DME	560	510	2800	3700	560	510	2800	3700

Notes:

(1) VIS will be increased to 1200m when runway edge lights are inop.

CIRCLING		C			D		
R/W	Procedure	MDA QNH ft	MDH QFE ft	Vis m	MDA QNH ft	MDH QFE ft	Vis m
03	RNAV (GNSS)(1)	1440	1380	4000	N/A	N/A	N/A
	All other procs (1)	1440	1380	4000	1440	1380	5000

Notes:

(1) Cat C and D N/A beyond PH 4d East of RWY 03/21 and RWY 06/24.

TAKE-OFF		C		D	
Runway	Facilities	RVR	Vis	RVR	Vis
All	REDL + RCL	-	500	-	500
All	Nil (Day only)	-	800	-	800

Notes:

ALTERNATE MINIMA

Cat A, B (Ceil/Vis): 1193ft/4.4km; Cat C: 1873ft/6.0km; Cat D: 1873ft/7.0km (1)

(1) Cat D N/A for RWY 03 RNAV (GNSS) proc.

SPECIAL ALTERNATE MINIMA

(Applicable to ILS and LOC procedures only)

All categories (Ceil/Vis): 700ft / 2.5km

JAR-OPS Landing Minima

PERTH

The following Minima is for Public Transport aircraft and conforms to JAR-OPS1 regulations.

STRAIGHT-IN APPROACH		A				B			
R/W	Procedure	DA/ MDA QNH ft	DH/ MDH QFE ft	VIS m	VIS No ALS m	DA/ MDA QNH ft	DH/ MDH QFE ft	VIS m	VIS No ALS m
03	ILS/DME Y, Z	320	260	1500	N/A	320	260	1500	N/A
03	LOC/DME Y, Z	520	460	2500	N/A	520	460	2500	N/A
03	VOR/DME	520	460	2600	N/A	520	460	2600	N/A
03	RNAV (GNSS)	560	500	2700	N/A	560	500	2700	N/A
06	VOR/DME	620	570	3200	N/A	620	570	3200	N/A
21	ILS (1)	250	210	800	1500	250	210	800	1500
21	LOC/DME	550	510	1900	2800	550	510	1900	2800
21	VOR/DME	550	510	2900	3800	550	510	2900	3800
21	RNAV (GNSS)	560	520	2900	3800	560	520	2900	3800
24	ILS (1)	260	210	800	1500	260	210	800	1500
24	LOC/DME	550	500	1800	2700	550	500	1800	2700
24	VOR/DME	560	510	2800	3700	560	510	2800	3700

Notes:

(1) VIS will be increased to 1200m when runway edge lights are inop.

CIRCLING		A			B		
R/W	Procedure	MDA QNH ft	MDH QFE ft	Vis m	MDA QNH ft	MDH QFE ft	Vis m
03	RNAV (GNSS)(1)	760	700	2400	760	700	2400
	All other procs (1)	760	700	2400	760	700	2400

Notes:

(1) Cat C and D N/A beyond PH 4d East of RWY 03/21 and RWY 06/24.

TAKE-OFF		A		B	
Runway	Facilities	RVR	Vis	RVR	Vis
All	REDL + RCL	-	500	-	500
All	Nil (Day only)	-	800	-	800

Notes:

ALTERNATE MINIMA

Cat A, B (Ceil/Vis): 1193ft/4.4km; Cat C: 1873ft/6.0km; Cat D: 1873ft/7.0km (1)

(1) Cat D N/A for RWY 03 RNAV (GNSS) proc.

SPECIAL ALTERNATE MINIMA

(Applicable to ILS and LOC procedures only)

All categories (Ceil/Vis): 700ft / 2.5km