

## Airport information:

Country: Australia

City: ROCKHAMPTON

Coordinates: S 23 22.9, E150 28.5

Elevation: 36

Customs: : O/R

Fuel: Jet A1, AVGAS

RFF: CAT 6

hours: HO

## Runways:

Runway 04

Takeoff length: 1645, Landing length: 1645

Runway 15

Takeoff length: 2568, Landing length: 2568

Runway 22

Takeoff length: 1645, Landing length: 1645

Runway 33

Takeoff length: 2568, Landing length: 2568

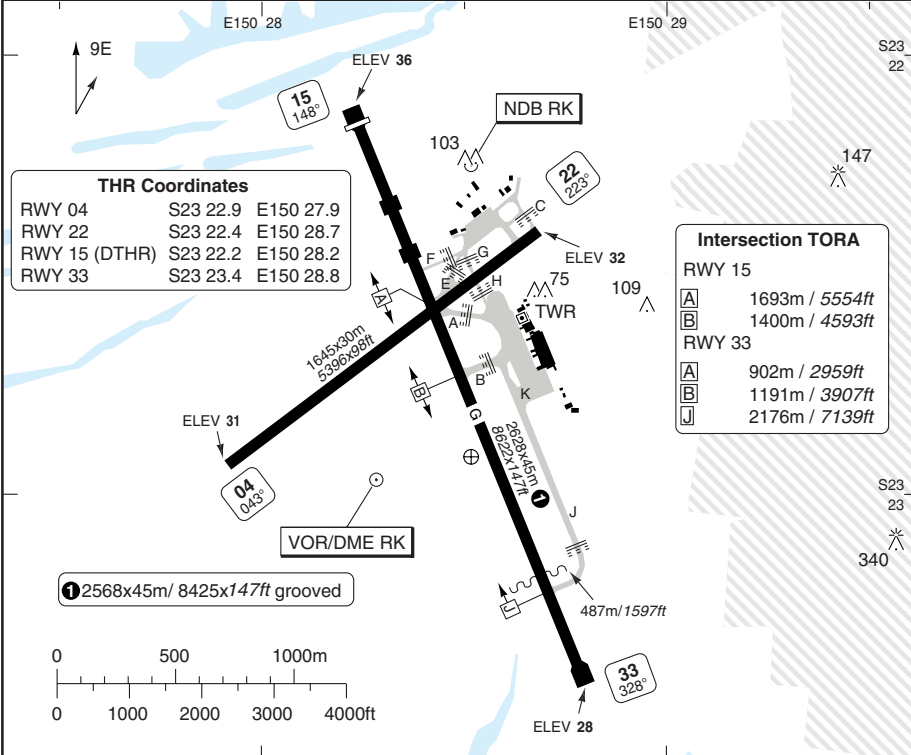
# AERODROME

# ROCKHAMPTON

10 - 1

Rocky GND <b>121.8</b>	TWR <b>118.1</b>	CTAF+AFRU <b>118.1</b> Outside TWR HR	Brisbane Centre FIA <b>119.55</b> On GND outside TWR HR	ATIS <b>116.9</b> <b>128.5</b>
---------------------------	---------------------	---------------------------------------------	---------------------------------------------------------------	--------------------------------------

AD Elev <b>36</b>	ARP: S23 22.9 E150 28.5	RFF: CAT 6: 2030-1110	AD HR: HO
-------------------	-------------------------	-----------------------	-----------



RWY	Slope	TORA m/ft	LDA m/ft	ALS	REDL	Additional
04	0	1645 / 5396	1645 / 5396	-	M	-
22	0	1645 / 5396	1645 / 5396	-	M	-
15	0	② 2628 / 8622	2568 / 8425	-	M	P 3°/R (70)
33	0	2568 / 8425	2568 / 8425	-	M	P 3°/R (70)

② For 2628m TORA, taxi to East side of THR lights and line up northern side of DTHR.

ARCAL: 119.6 type PAL.

**STATE TAKE OFF MINIMA**

RWY	Facilities	CEL/VIS			
		A	B	C	D
All	REDL + RCLL or RCL	0ft / 0.55 km			
	Otherwise	0ft / 0.8 km			

**PLANNING MINIMA ALTERNATE**

CAT A/B <b>a</b>	1274 ft / 4.4 km
CAT C <b>a</b>	1544 ft / 6.0 km
CAT D <b>a</b>	1544 ft / 7.0 km

**a** Minima based on forecast Terminal QNH. If AD QNH is received MDA/MDH may be reduced by 100ft.

Aeronautical Data © Australian Airlineservices

© Navtech - ybrk01laorgo

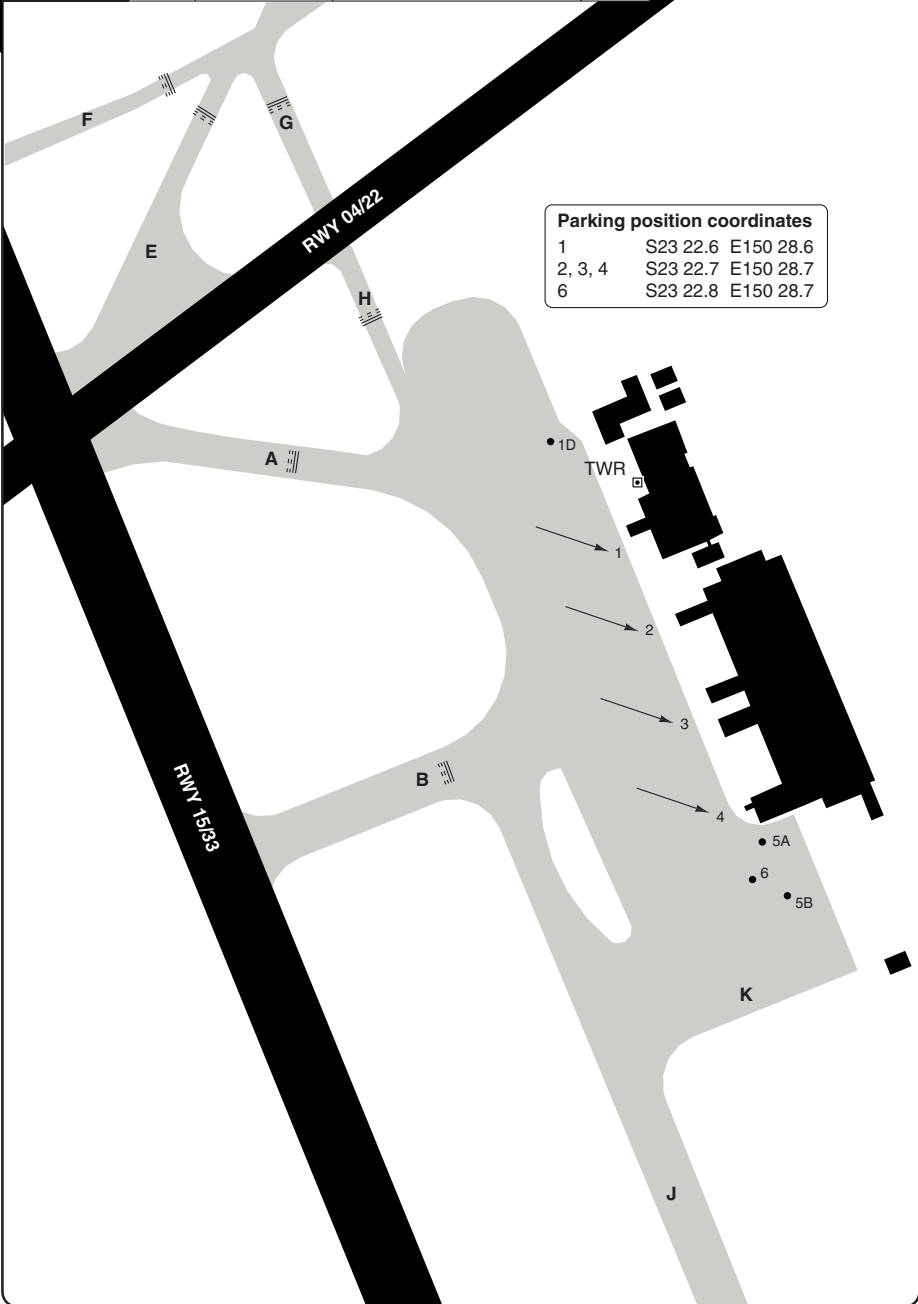
Change: New AD

**THIS CHART IS A PART OF NAVIGRAPH NDAC AND IS INTENDED FOR FLIGHT SIMULATION USE ONLY**

# AERODROME

10 - 2

Rocky GND <b>121.8</b>	TWR <b>118.1</b>	CTAF+AFRU <b>118.1</b> Outside TWR HR	Brisbane Centre FIA <b>119.55</b> <b>122.0</b> On GND outside TWR HR	ATIS <b>116.9</b> <b>128.5</b>
---------------------------	---------------------	---------------------------------------------	----------------------------------------------------------------------------	--------------------------------------



Aeronautical Data © Australian Airservices

© Navtech - ybrk02laorg0

Change: New AD

**THIS CHART IS A PART OF NAVIGRAPH NDAC AND IS INTENDED FOR FLIGHT SIMULATION USE ONLY**

## GENERAL

## GENERAL

**1. CAUTION**

- 1.1 Bird hazard exists.  
1.2 Hang gliding activities at Mt Helen 155°/28nm from Rockhampton AD, at MAX 4000 (during HJ on SAT,SUN and HOL).

**2. COMMUNICATION**

- 2.1 TWR HR:  
MON-SAT 2030-1035; SUN 2130-1035.  
2.2 TWR HR may change at short notice, check status of airspace with ATS or Rocky ATIS.

**3. NOTE**

AD is security controlled.

**4. CIRCUITS**

RWY 15 and 22 right hand circuits  
(Outside TWR HR).

**5. TRAFFIC NOTES**

- 5.1 Circuit training for ACFT above 5700kg permitted 21-12.

**6. TAXI RESTRICTION**

- 6.1 TWY B,J and K - ACFT taxiing with engines overhanging TWY edge must avoid power above idle thrust to prevent shoulder erosion and engine damage.  
6.2 A340-600, A380-800 and B777-300 ACFT Operations: ACFT should exercise caution during turns as normal clearance to TWY edge may not be avbl. Use judgemental oversteer when negotiating TWY to TWY and RWY to TWY turns.  
6.3 TWY A and apron edge taxi lane, between TWY A and TWY K restricted to MAX 36m/115ft wingspan.

**7. AIRSPACE CLASSIFICATION**

Outside TWR HR, Rockhampton class D airspace becomes class G.

## ARRIVAL

**1. NOISE ABATEMENT PROCEDURE**

- 1.1 PREFERRED RUNWAY  
LDG - RWY 33  
1.2 PREFERRED FLIGHT PATHS  
LDG RWY 04  
From south - track for a right base.  
From north, east and west - track for a left base.  
LDG RWY 22  
From south - overfly for a right base.  
From north, east and west - track for a right base.  
LDG RWY 15  
From south and west - track for a right base.  
From north - make a straight-in approach.  
From east - track for a left base.  
LDG RWY 33  
From south make a straight-in approach or overfly for a left base.  
From other directions - track for a left base.

## DEPARTURE

**1. NOISE ABATEMENT PROCEDURE**

- 1.1 PREFERRED RUNWAY  
TKOF - RWY 15  
1.2 PREFERRED FLIGHT PATHS  
DEP RWY 04  
All ACFT are to turn left.  
DEP RWY 22  
To the south and east - turn left.  
To the north and west - turn right.  
DEP RWY 15  
To the north and west - turn right.  
To the south and east - no restrictions.  
DEP RWY 33  
To the west and south - turn left.  
To the north and east - no restrictions.

# ARRIVAL PROC SECTOR A DME or GPS

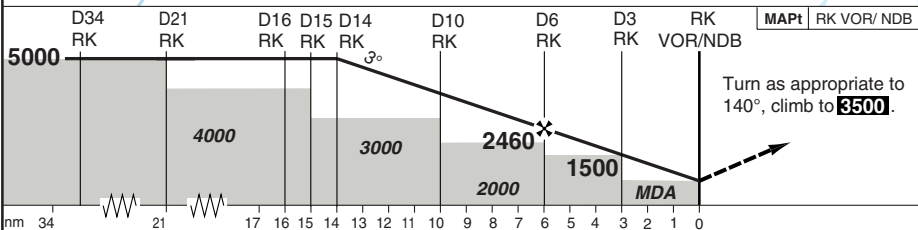
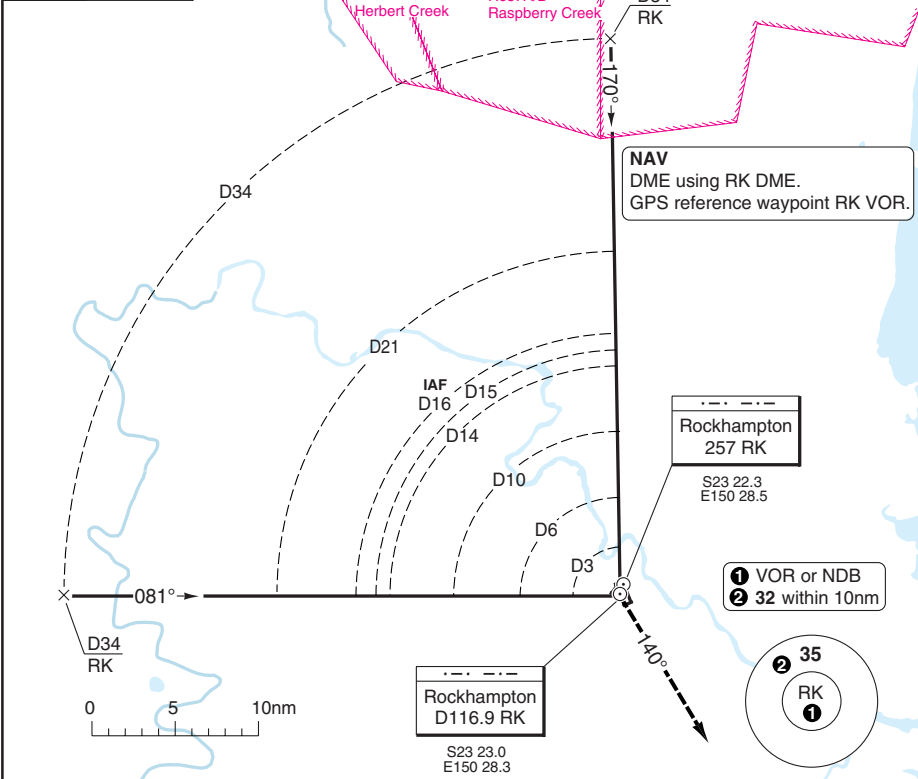
# ROCKHAMPTON

Rocky TWR <b>118.1</b>	CTAF+AFRU <b>118.1</b> Outside TWR HR	Rocky GND <b>121.8</b>	Brisbane Centre FIA <b>119.55</b> <b>122.0</b> On GND outside TWR HR	ATIS <b>116.9</b> <b>128.5</b>
---------------------------	---------------------------------------------	---------------------------	----------------------------------------------------------------------------	--------------------------------------

TL ATC AD Elev **36**

R684A,B  
Mount Hummock

Aeronautical Data © Australian Airservices



STATE	ACFT	DME OR GPS Circling
A		<b>840</b> (804) 2.4km
B		<b>840</b> (804) 2.4km
C		<b>1080</b> (1044) 4.0km
D		<b>1080</b> (1044) 5.0km

**Note:** Minima based on forecast Terminal QNH. If AD QNH is received, DA/DH, MDA/MDH may be reduced by 100ft. NA beyond 4nm East of RWY 15/33.

DME RK	3.0° ALT
14	<b>5000</b>
10	<b>3730</b>
8	<b>3100</b>
6	<b>2460</b>
4	<b>1830</b>
3	<b>1500</b>
1.6	<b>1080</b>
0.9	<b>840</b>

GS	80	100	120	140	160
ROD 3.0°	430	540	650	750	860

Change: New AD

# ARRIVAL PROC SECTOR B DME or GPS

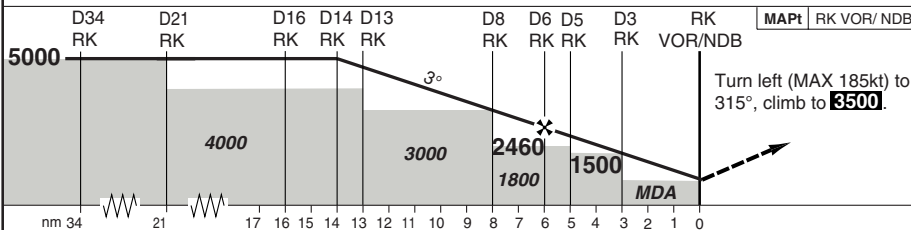
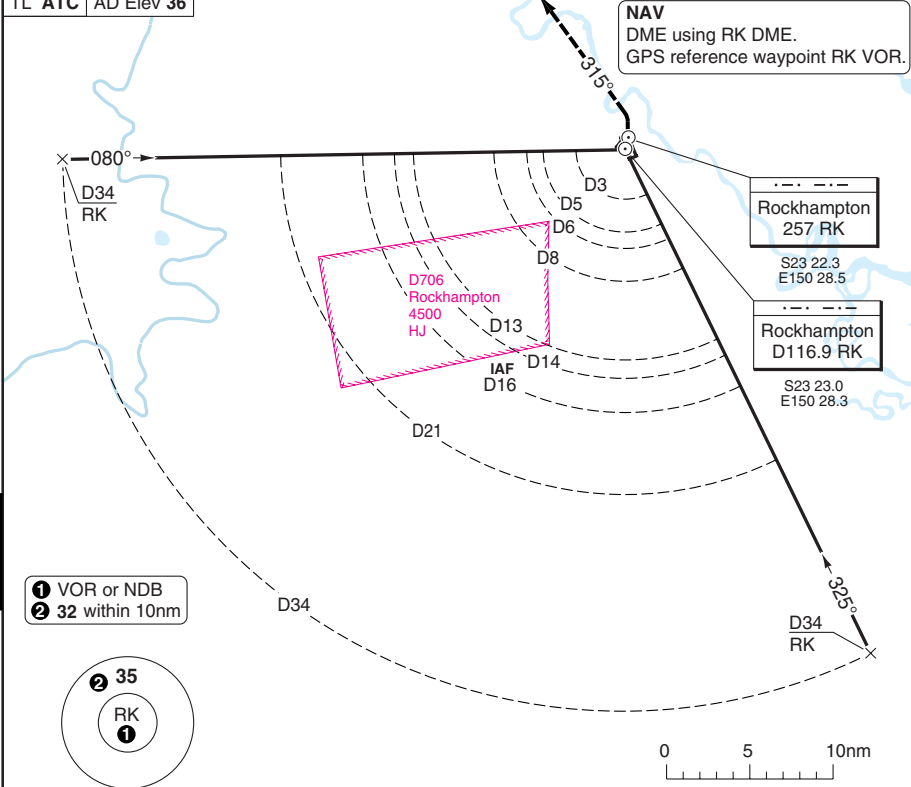
# ROCKHAMPTON

Rocky TWR <b>118.1</b>	CTAF+AFRU <b>118.1</b> Outside TWR HR	Rocky GND <b>121.8</b>	Brisbane Centre FIA <b>119.55</b> <b>122.0</b> On GND outside TWR HR	ATIS <b>116.9</b> <b>128.5</b>
---------------------------	---------------------------------------------	---------------------------	----------------------------------------------------------------------------	--------------------------------------

TL ATC AD Elev **36**

NAV  
DME using RK DME.  
GPS reference waypoint RK VOR.

Aeronautical Data © Australian Airservices



ACFT	DME OR GPS Circling
A	<b>940</b> (904) 2.4km
B	<b>940</b> (904) 2.4km
C	<b>1080</b> (1044) 4.0km
D	<b>1080</b> (1044) 5.0km

Note: Minima based on forecast Terminal QNH. If AD QNH is received, DA/DH, MDA/MDH may be reduced by 100ft. NA beyond 4nm East of RWY 15/33.

DME RK	3.0° ALT
14	<b>5000</b>
10	<b>3730</b>
8	<b>3100</b>
6	<b>2460</b>
4	<b>1830</b>
3	<b>1500</b>
1.6	<b>1080</b>
1.2	<b>940</b>

GS	80	100	120	140	160
ROD 3.0°	430	540	650	750	860

© Navtech - ybrk02aaorog

40 - 2

Change: New AD

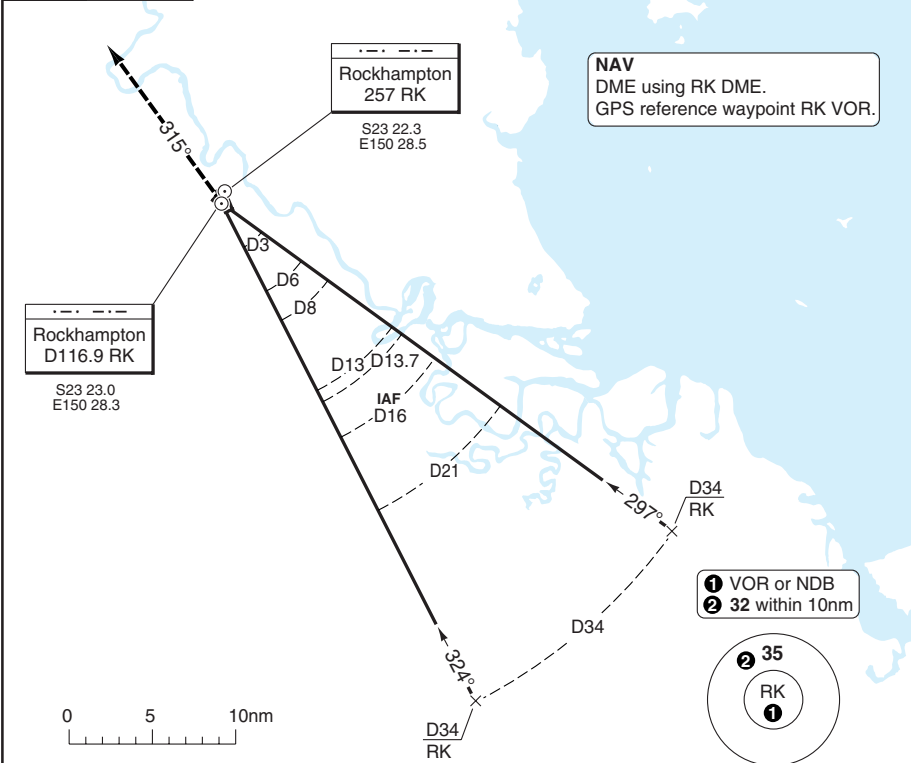
# ARRIVAL PROC SECTOR C DME or GPS

# ROCKHAMPTON

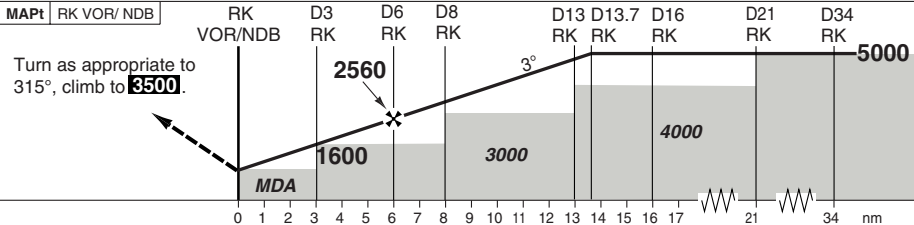
Rocky TWR <b>118.1</b>	CTAF+AFRU <b>118.1</b> Outside TWR HR	Rocky GND <b>121.8</b>	Brisbane Centre FIA <b>119.55</b> <b>122.0</b> On GND outside TWR HR	ATIS <b>116.9</b> <b>128.5</b>
---------------------------	---------------------------------------------	---------------------------	----------------------------------------------------------------------------	--------------------------------------

TL ATC AD Elev **36**

Aeronautical Data © Australian Airservices



40 - 3



ACFT	DME OR GPS Circling
A	<b>850</b> (814) 2.4km
B	<b>850</b> (814) 2.4km
C	<b>1080</b> (1044) 4.0km
D	<b>1080</b> (1044) 5.0km

**Note:** Minima based on forecast Terminal QNH. If AD QNH is received, DA/DH, MDA/MDH may be reduced by 100ft. NA beyond 4nm East of RWY 15/33.

DME	3.0°
RK	ALT
13.7	<b>5000</b>
10	<b>3830</b>
8	<b>3200</b>
6	<b>2560</b>
4	<b>1930</b>
3	<b>1600</b>
1.3	<b>1080</b>
0.6	<b>850</b>

GS	80	100	120	140	160
ROD 3.0°	430	540	650	750	860

Change: New AD

© Navitech - ybrk03aaorrg

# ARRIVAL PROC from GLA DME or GPS

# ROCKHAMPTON

Rocky TWR <b>118.1</b>	CTAF+AFRU <b>118.1</b> Outside TWR HR	Rocky GND <b>121.8</b>	Brisbane Centre FIA <b>119.55</b> <b>122.0</b> On GND outside TWR HR	ATIS <b>116.9</b> <b>128.5</b>
---------------------------	---------------------------------------------	---------------------------	----------------------------------------------------------------------------	--------------------------------------

TL ATC AD Elev 36

Rockhampton  
257 RK

S23 22.3  
E150 28.5

D3  
RK

D6  
RK

D8  
RK

D14  
RK

IAF  
D16  
RK

D13  
RK

D21  
RK

NAV  
DME using RK DME.  
GPS reference waypoint RK VOR.

Rockhampton  
D116.9 RK

S23 23.0  
E150 28.3

D34  
RK

Gladstone  
116.3 GLA

S23 51.9  
E151 12.3

296°

296°

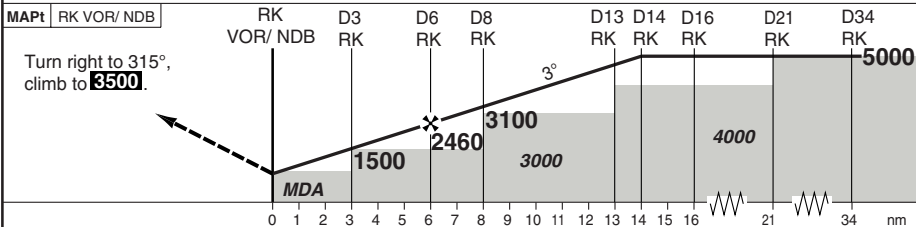
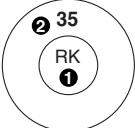
3500

Aeronautical Data © Australian Airservices

40 - 4



- 1 VOR or NDB
- 2 32 within 10nm



ACFT	DME OR GPS Circling
A	<b>840</b> (804) 2.4km
B	<b>840</b> (804) 2.4km
C	<b>1080</b> (1044) 4.0km
D	<b>1080</b> (1044) 5.0km

Note: Minima based on forecast Terminal QNH. If AD QNH is received, DA/DH, MDA/MDH may be reduced by 100ft. NA beyond 4nm East of RWY 15/33.

DME RK	3.0° ALT
14	<b>5000</b>
10	<b>3730</b>
8	<b>3100</b>
6	<b>2460</b>
4	<b>1830</b>
3	<b>1500</b>
1.6	<b>1080</b>
0.9	<b>840</b>

GS	80	100	120	140	160
ROD 3.0°	430	540	650	750	860

Change: New AD

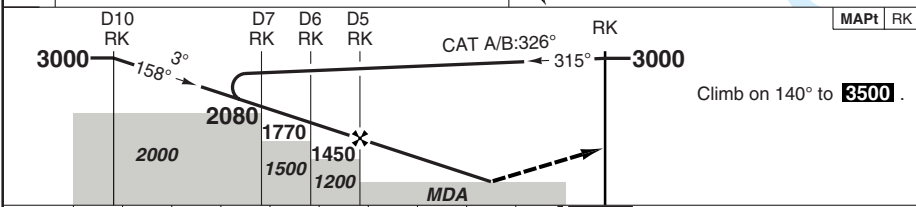
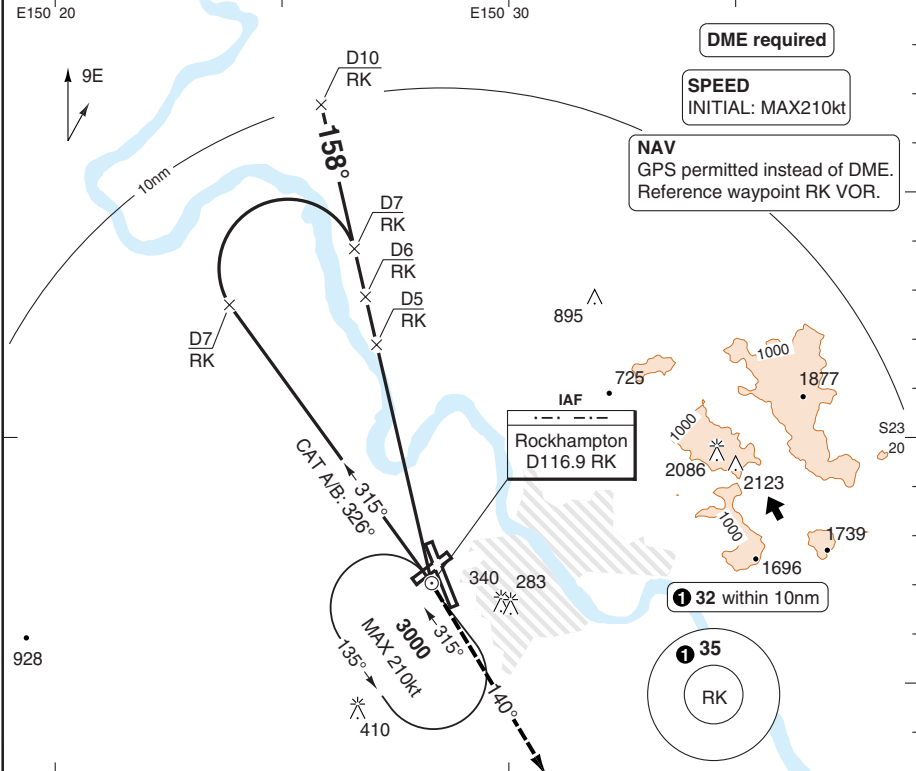
© Navitech - ybrk04aao90

# VOR RWY 15

# ROCKHAMPTON

Rocky TWR <b>118.1</b>	CTAF+AFRU <b>118.1</b> <small>Outside TWR HR</small>	Rocky GND <b>121.0</b>	Brisbane Centre FIA <b>119.55</b> <small>122.0 On GND outside TWR HR</small>	ATIS <b>116.9</b> <b>128.5</b>
---------------------------	------------------------------------------------------------	---------------------------	------------------------------------------------------------------------------------	--------------------------------------

VOR/DME <b>116.9 RK</b>	FAT <b>158°</b>	THR Elev <b>36</b>	AD Elev <b>36</b>	TL ATC	TA <b>10000</b>
-------------------------	-----------------	--------------------	-------------------	--------	-----------------



STATE	ACFT	VOR+DME	Circling <sup>a</sup>	Note:	DME	3.1° ALT	LDA 2568x45
A			<b>810</b> (774) 2.6km	Minima based on forecast Terminal QNH. If AD QNH is received, DA/DH, MDA/MDH may be reduced by 100ft.	RK	<b>3000</b>	8425x147ft
B	<b>520</b> (484)	2.6km	<b>810</b> (774) 2.6km		<sup>a</sup> NA beyond 4nm East of RWY 15/33.	9.8	<b>3000</b>
C			<b>1080</b> (1044) 4.0km	8		<b>2430</b>	
D			<b>1080</b> (1044) 5.0km	7		<b>2080</b>	
				6		<b>1780</b>	
				5		<b>1450</b>	
				4		<b>1130</b>	
				3		<b>800</b>	
				2.1	<b>520</b>		

Change: New AD

PANS OPS

Aeronautical Data © Australian Airservices

© Navtech - ybrk01iiaip00

50 - 1

NALS

# VOR RWY 33

# ROCKHAMPTON

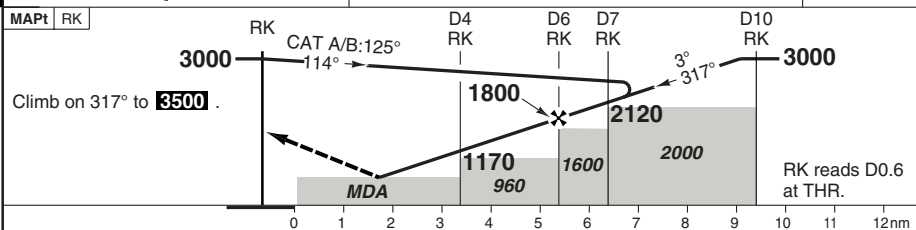
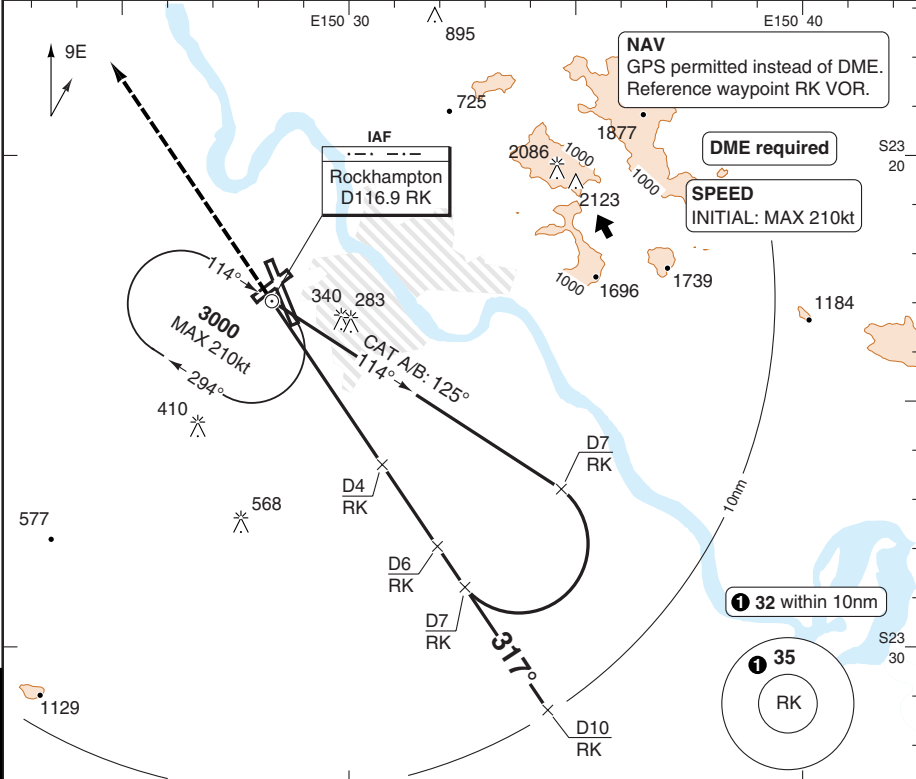
Rocky TWR <b>118.1</b>	CTAF+AFRU <b>118.1</b> <small>Outside TWR HR</small>	Rocky GND <b>121.0</b>	Brisbane Centre FIA <b>119.55</b> <small>122.0 On GND outside TWR HR</small>	ATIS <b>116.9</b> <b>128.5</b>
---------------------------	------------------------------------------------------------	---------------------------	------------------------------------------------------------------------------------	--------------------------------------

VOR/DME <b>116.9 RK</b>	FAT <b>317°</b>	THR Elev <b>28</b>	AD Elev <b>36</b>	TL ATC	TA <b>10000</b>
-------------------------	-----------------	--------------------	-------------------	--------	-----------------

PANS OPS

Aeronautical Data © Australian Airservices

50 - 2



ACFT	VOR+DME	Circling <sup>a</sup>	<b>Note:</b> Minima based on forecast Terminal QNH. If AD QNH is received, DA/DH, MDA/MDH may be reduced by 100ft. <sup>a</sup> NA beyond 4nm East of RWY 15/33.	DME	3.1°	LDA 2568x45 8425x147ft P 3°L/R (70)	
A	570 (543) 3.1km	810 (774) 3.1km		RK	ALT		
B		810 (774) 3.1km		9.6	3000		
C		1080 (1044) 4.0km		8	2480		
D		1080 (1044) 5.0km		7	2120		
GS	80	100	120	140	160	6	1830
ROD 3.1°	440	550	660	770	880	5	1500
						4	1170
						3	850
						2.2	570

© Navtech - ybrk02iaip00

NALS

Change: New AD

**THIS CHART IS A PART OF NAVIGRAPH NDAC AND IS INTENDED FOR FLIGHT SIMULATION USE ONLY**

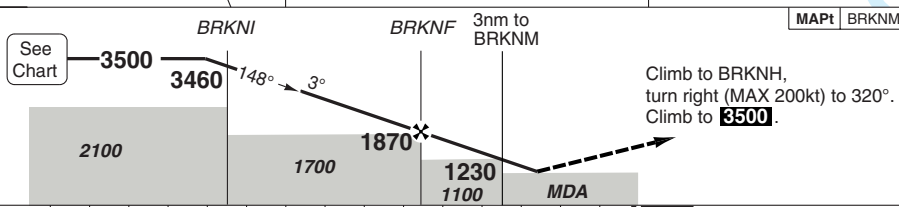
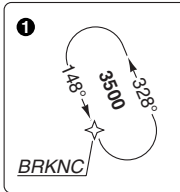
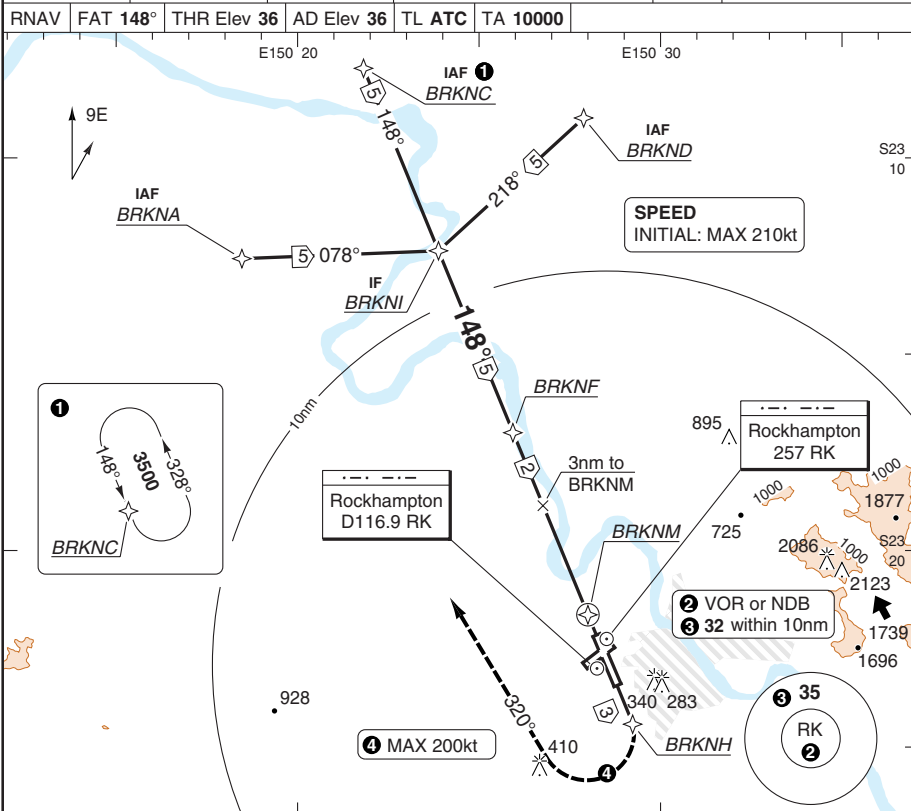
# RNAV (GNSS) RWY 15

# ROCKHAMPTON

Rocky TWR <b>118.1</b>	CTAF+AFRU <b>118.1</b> <small>Outside TWR HR</small>	Rocky GND <b>121.0</b>	Brisbane Centre FIA <b>119.55</b> <small>122.0 On GND outside TWR HR</small>	ATIS <b>116.9</b> <b>128.5</b>	
RNAV	FAT <b>148°</b>	THR Elev <b>36</b>	AD Elev <b>36</b>	TL ATC	TA <b>10000</b>

PANS OPS

Aeronautical Data © Australian Airservices



Climb to BRKNH, turn right (MAX 200kt) to 320°. Climb to **3500**.

ACFT	LNAV	Circling <sup>a</sup>	THR	3.1° ALT	LDA 2568x45
A		810 (774) 2.6km	15		8425x147ft
B	510 (474)	810 (774) 2.6km	10.4	3500	P 3°L/R (70)
C	2.6km	1080 (1044) 4.0km	9	3030	
D		1080 (1044) 5.0km	7	2380	
			6	2050	
			5	1720	
			4	1400	
			3	1070	
			1.3	510	

GS	80	100	120	140	160
ROD 3.1°	440	550	660	770	880

Note: Minima based on forecast Terminal QNH. If AD QNH is received, DA/DH, MDA/MDH may be reduced by 100ft.  
<sup>a</sup> NA beyond 4nm East of RWY 15/33.



NALS

50 - 3

© Navtech - ybrk03iaip00

Change: New AD

**THIS CHART IS A PART OF NAVIGRAPH NDAC AND IS INTENDED FOR FLIGHT SIMULATION USE ONLY**

# RNAV (GNSS) RWY 33

# ROCKHAMPTON

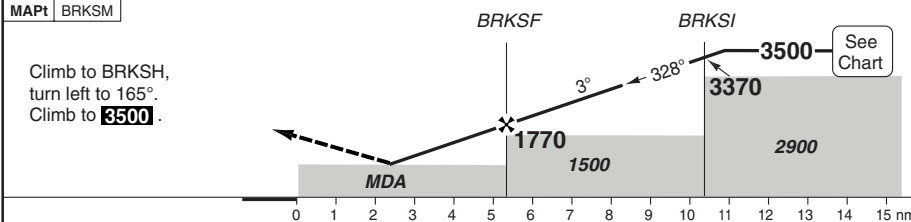
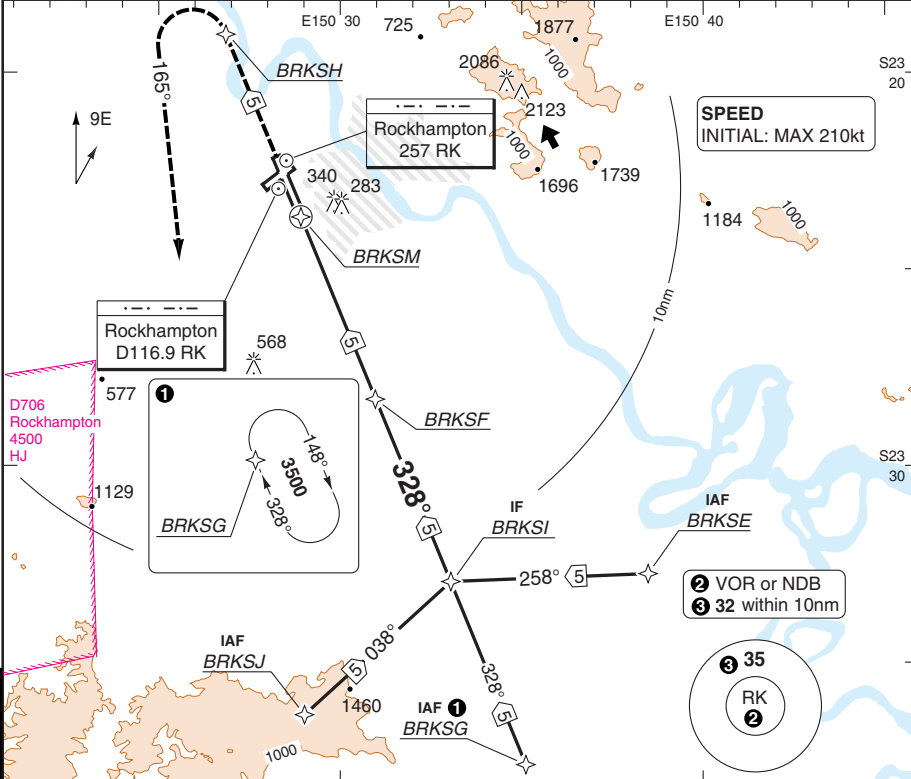
Rocky TWR <b>118.1</b>	CTAF+AFRU <b>118.1</b> <small>Outside TWR HR</small>	Rocky GND <b>121.0</b>	Brisbane Centre FIA <b>119.55</b> <small>122.0 On GND outside TWR HR</small>	ATIS <b>116.9</b> <b>128.5</b>
---------------------------	------------------------------------------------------------	---------------------------	------------------------------------------------------------------------------------	--------------------------------------

RNAV	FAT <b>328°</b>	THR Elev <b>28</b>	AD Elev <b>36</b>	TL ATC	TA <b>10000</b>
------	-----------------	--------------------	-------------------	--------	-----------------

PANS OPS

Aeronautical Data © Australian Airservices

4 - 50



ACFT	LNAV	Circling <sup>a</sup>	<b>Note:</b> Minima based on forecast Terminal QNH. If AD QNH is received, DA/DH, MDA/MDH may be reduced by 100ft. <b>a</b> NA beyond 4nm East of RWY 15/33.	THR	3.0°	LDA 2568x45 8425x147ft P 3°/L/R (70)
A	600 (573) 3.2km	810 (774) 3.2km		33	ALT	
B		810 (774) 3.2km		10.7	3500	
C		1080 (1044) 4.0km		9	2960	
D		1080 (1044) 5.0km		7	2320	
			6	2000		
		5	1680			
		4	1360			
		3	1040			
		1.6	600			

© Navtech - ybrk04iap00

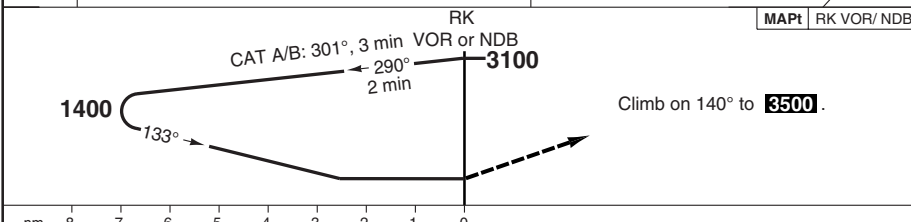
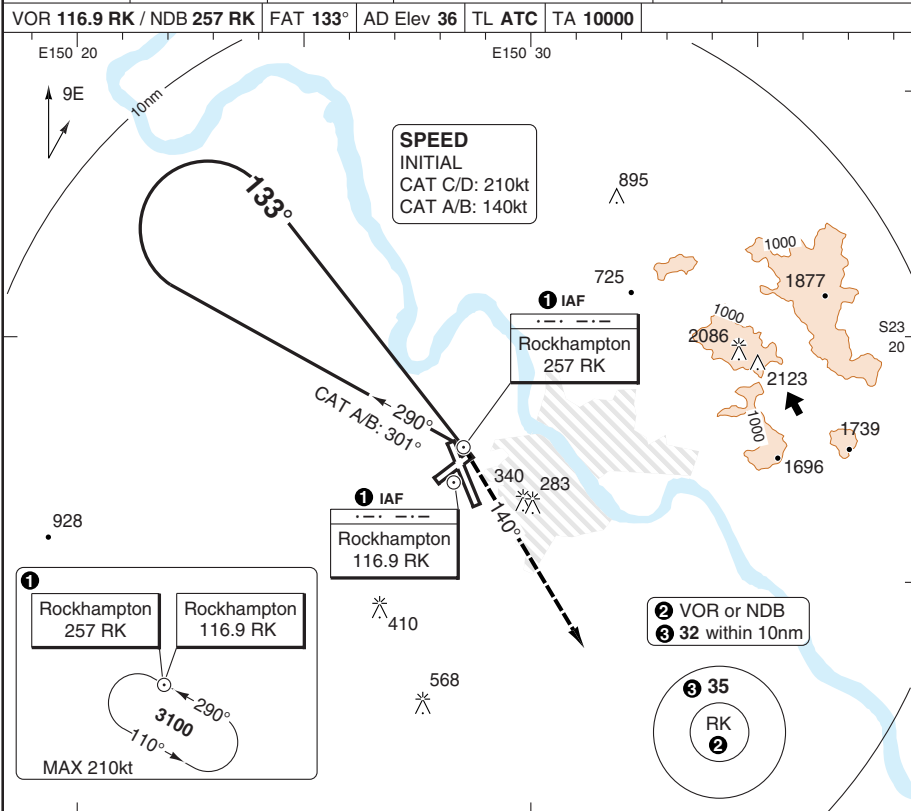
NALS

Change: New AD

# VOR A or NDB A

# ROCKHAMPTON

Rocky TWR <b>118.1</b>	CTAF+AFRU <b>118.1</b> <small>Outside TWR HR</small>	Rocky GND <b>121.0</b>	Brisbane Centre FIA <b>119.55</b> <small>122.0 On GND outside TWR HR</small>	ATIS <b>116.9</b> <b>128.5</b>	
VOR <b>116.9 RK</b> / NDB <b>257 RK</b>		FAT <b>133°</b>	AD Elev <b>36</b>	TL ATC	TA <b>10000</b>



nm	8	7	6	5	4	3	2	1	0
ACFT	<b>Circling</b>								
A	<b>810</b> (774) 2.4km								
B	<b>810</b> (774) 2.4km								
C	<b>1080</b> (1044) 4.0km								
D	<b>1080</b> (1044) 5.0km								

**Note:** Minima based on forecast Terminal QNH.  
If AD QNH is received, DA/DH, MDA/MDH may be reduced by 100ft.  
VOR or NDB required.  
NA beyond 4nm East of RWY 15/33.

Aeronautical Data © Australian Airservices

© Navtech - ybrk05iaip00

50 - 5

Reverse side blank

Change: New AD

**THIS CHART IS A PART OF NAVIGRAPH NDAC AND IS INTENDED FOR FLIGHT SIMULATION USE ONLY**