

Airport information:

Country: Australia

City: BRISBANE

Coordinates: S 27 23.0, E153 07.1

Elevation: 13

Customs: Customs

Fuel: Jet A1, AVGAS

RFF: CAT 9

hours: H24.

Runways:

Runway 01

Takeoff length: 3500, Landing length: 3500

Runway 14

Takeoff length: 1700, Landing length: 1700

Runway 19

Takeoff length: 3560, Landing length: 3560

Runway 32

Takeoff length: 1700, Landing length: 1700

Brisbane DLV 118.6	GND 121.7	TWR 120.5	DEP 128.3 NW 125.6 SE	RAD 125.7	ATIS 113.2 125.5
-----------------------	--------------	--------------	-----------------------------	--------------	------------------------

AD Elev 13	ARP: S27 23.0 E153 07.1	RFF: CAT 9	AD HR: H24
------------	-------------------------	------------	------------

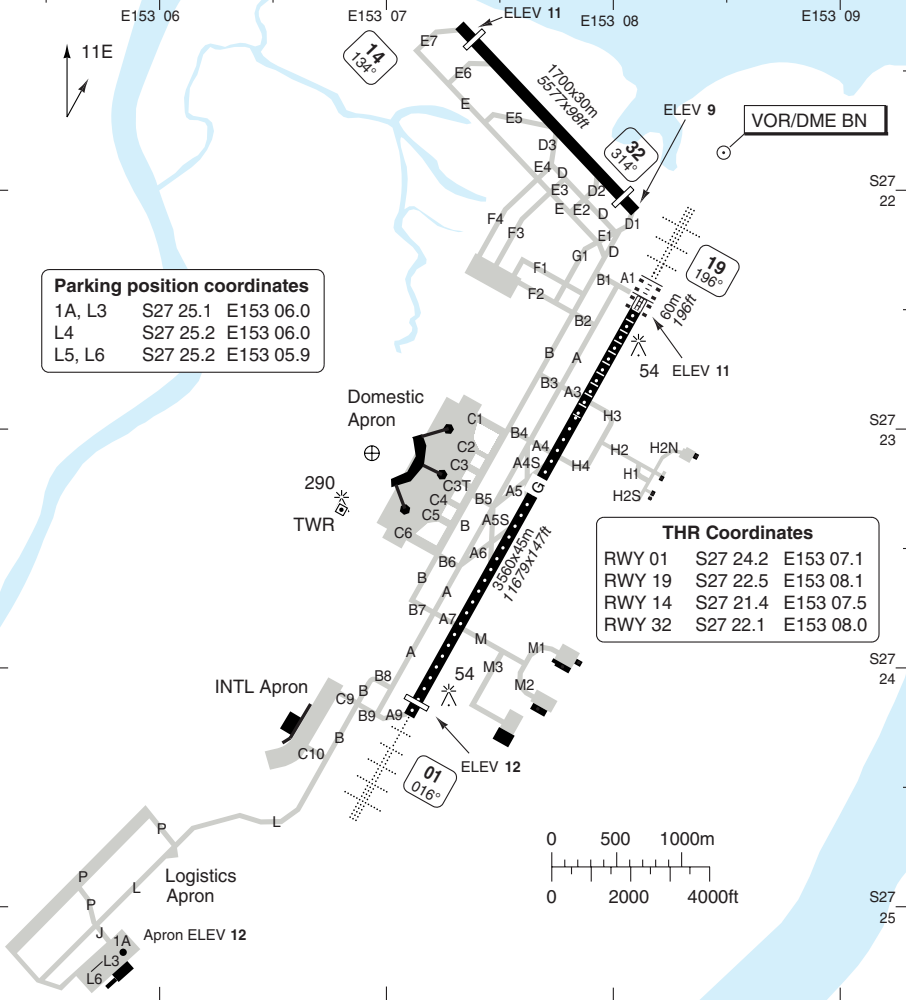
Aeronautical Data © Australian Airservices

Parking position coordinates

1A, L3	S27 25.1	E153 06.0
L4	S27 25.2	E153 06.0
L5, L6	S27 25.2	E153 05.9

THR Coordinates

RWY 01	S27 24.2	E153 07.1
RWY 19	S27 22.5	E153 08.1
RWY 14	S27 21.4	E153 07.5
RWY 32	S27 22.1	E153 08.0



RWY	Slope	TORA m/ft	LDA m/ft	ALS	REDL	RCLL	Additional
01	0	3500 / 11482	3500 / 11482	H-C	H	30m	P 3° L/R (64), REIL ①
19	0	3560 / 11679	3560 / 11679	H-A	H	30m	P 3° L/R (64)
14	0	1700 / 5577	1700 / 5577	-	-	-	P 3° L/R (51)
32	0	1700 / 5577	1700 / 5577	-	-	-	P 3° L/R (51)

① Operating HJ.

© Navitech - ybbn011aor90

Change: TWY C3T, PAPI, Terminal

THIS CHART IS A PART OF NAVIGRAPH NDAC AND IS INTENDED FOR FLIGHT SIMULATION USE ONLY

AERODROME

10 - 2

Aeronautical Data © Australian Airservices

STATE TAKE OFF MINIMA

RWY	Facilities	CEL/VIS			
		A	B	C	D
All	REDL + RCLL or RCL	0ft / 0.55km			
	Otherwise	0ft / 0.8km			

PLANNING MINIMA ALTERNATE

CAT A/B	1137 ft / 4.4 km
CAT C	1237 ft / 6.0 km
CAT D	1337 ft / 7.0 km

Note: Special ALTN MNM for all CAT: 700 ft / 2.5km after ILS RWY 01/19.

© Navitech - ybbn021aorg0

Change: Minima.

THIS CHART IS A PART OF NAVIGRAPH NDAC AND IS INTENDED FOR FLIGHT SIMULATION USE ONLY

GROUND

Brisbane DLV 118.6	GND 121.7	TWR 120.5	DEP 128.3 NW 125.6 SE
-----------------------	--------------	--------------	-----------------------------

RAD 125.7	ATIS 113.2 125.5
--------------	------------------------

**Parking position coordinates
INTL Apron**

74-76	S27 24.0 E153 06.8
76A-78	S27 24.1 E153 06.7
79, 80	S27 24.2 E153 06.7
81	S27 24.2 E153 06.6
82-84	S27 24.3 E153 06.6
85-87B	S27 24.4 E153 06.5

**Intersection TORA
RWY 19**

A3	2781m / 9123ft
H3	2774m / 9101ft
A4	2311m / 7582ft
H4	2304m / 7559ft
A4S	1974m / 6476ft

**Intersection TORA
RWY 01**

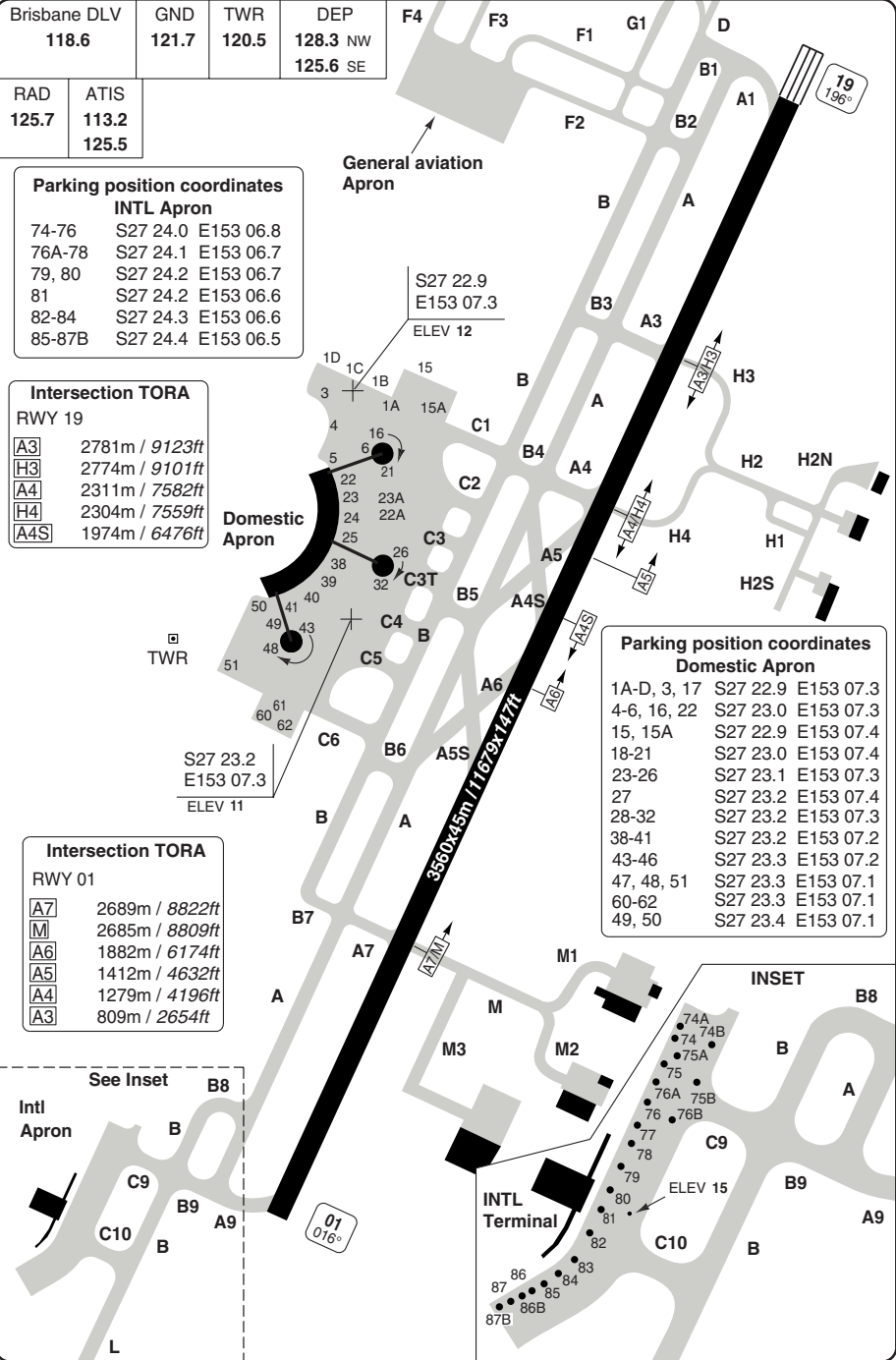
A7	2689m / 8822ft
M	2685m / 8809ft
A6	1882m / 6174ft
A5	1412m / 4632ft
A4	1279m / 4196ft
A3	809m / 2654ft

**Parking position coordinates
Domestic Apron**

1A-D, 3, 17	S27 22.9 E153 07.3
4-6, 16, 22	S27 23.0 E153 07.3
15, 15A	S27 22.9 E153 07.4
18-21	S27 23.0 E153 07.4
23-26	S27 23.1 E153 07.3
27	S27 23.2 E153 07.4
28-32	S27 23.2 E153 07.3
38-41	S27 23.2 E153 07.2
43-46	S27 23.3 E153 07.2
47, 48, 51	S27 23.3 E153 07.1
60-62	S27 23.3 E153 07.1
49, 50	S27 23.4 E153 07.1

Aeronautical Data © Australian Airservices

© Navitech - ybbn03gaorg0



Change: TWY C3T, Stand 37A Removed, Stand 31 and 32 added, Terminal

THIS CHART IS A PART OF NAVIGRAPH NDAC AND IS INTENDED FOR FLIGHT SIMULATION USE ONLY

GENERAL

GENERAL

1. **WARNING**
Bird Hazard.
2. **PREFERENTIAL RWY SYSTEM**
12-20: ICAO Chapter 2 ACFT BTN,
LDG RWY 19. TKOF RWY 01.
TKOF RWY 19 not permitted.
3. **SPEED**
MAX 250kt below 10000ft.
4. **TRAFFIC NOTES**
 - 4.1 B727 and above not to execute 180° turns on RWY 01/19.
 - 4.2 B737 and above not to execute 180° turns on RWY 14/32.
5. **TWY RESTRICTION**
 - 5.1 4 ENG heavy ACFT use idle power on outer engines.
 - 5.2 TWY A used in same direction as RWY in use, and TWY B used in the opposite direction unless otherwise specified.
 - 5.3 Rapid exit TWY A5S not marked with hold point.
 - 5.4 TWY H1, H2, H2N, H2S, H3 and H4 not AVBL for ACFT ABV 40t. All F28, BAE146, F100, B717 and B737 ACFT movement to be under tow only.
 - 5.5 TWY D, E, F1 and F2 not AVBL for ACFT
 - 5.6 B777-300, A340-600 and A380-800 OPS: Due to excessive ACFT wheelbase, normal TWY safety edge margin not AVBL. Use judgemental oversteer when negotiating TWY intersections at B/C9, B/C10 and INTL Apron. TWY L onto TWY P at TWY J.
 - 5.7 Due to no fillet pavement, ACFT cannot turn from TWY P onto TWY L at TWY J or from ABV 56t.
 - 5.8 New TWY C3T is available to aircraft Max B737/A321 (code C taxiway).
 - 5.9 When an A330 is parked on stand 20: Aircraft to carry out right turn only following pushback from stand 19 and left turn only following pushback from stand 21.

- 5.10 A380 (code F ACFT) operations using INTL Apron to use TWY C9, A380 compatible stands 74, 75, 76. Twy 10 and INTL Apron taxilane not available for A380 operations.

6. **CONVERGING RWY OPS**

Simultaneous converging approaches may take place in VMC, OPS will be nominated on ATIS.

Combinations:

RWY 01/14 and 01/32.

ARRIVAL

1. **NOISE ABATEMENT PROCEDURE**

1.1 Preferential RWY system:

- All hours: LDG 1. RWY 19
 - 12-20 (SUN - FRI) and 11-20 (SAT):
Preferred is reciprocal RWY OPR.
- | | |
|-----------|-----------|
| 1. RWY 19 | 2. RWY 32 |
| 3. RWY 14 | 4. RWY 01 |

RWY 01/19 will be preferred when the tailwind component does not exceed 10kt (including gusts) and the RWY is dry.

1.2 Preferred flight paths:

- LDG RWY 01
ACFT from the north on SMOKA 5 arrival for a visual APCH, will normally be routed via "River Track", see 40-7 and 50-11.
12-20: ACFT shall not descend below 3000ft until aligned with the RWY.
- LDG RWY 19
ACFT will normally be routed east of coast to avoid noise sensitive areas, descent below 3000ft not permitted until east of the coast.
12-20: ACFT shall not descend below 5000ft until east of the coast.
ACFT from the south will be radar vectored or directed to track Jacobs Well - POODL (S27 31.2 E153 20.3) - Brisbane. (RWY 14 also)
- LDG RWY 14
Track for a left base.
- LDG RWY 32
Track for a right base.

2. **SPEED RESTRICTION**

In VMC for APP unless directed by ATC.

- 2.1 180kt-200kt at 10nm from TDZ.
- 2.2 160kt until 4nm from TDZ.

GENERAL

DEPARTURE

1. NOISE ABATEMENT PROCEDURE

- 1.1 ICAO standard NAP (NADP 1 or 2) apply for RWY 19.
- 1.2 For ACFT which have engines with a by pass ratio greater than 3.5 may use the following proc:
- 1.2.1 Climb at V2+10kt to V2+20kt - or body angle limit speed, and
- 1.2.2 Maintain take off power to a height above the aerodrome of 1000ft:
- 1.2.3 Then maintaining a positive rate of climb, accelerate to zero flap minimum safe manoeuvring speed (Vzf) retracting flap on schedule,
- 1.2.4 Then reduce to normal climb power/thrust, and
- Note: For aeroplanes with slow flap retraction, reduce power/thrust at an intermediate flap setting.*
- 1.2.5 Continue climb at not greater than Vzf +10kt to a height above the aerodrome of 3000ft:
- 1.2.6 Accelerate smoothly to en route climb speed, and
- 1.2.7 Maintain runway heading unless required to do otherwise in accordance with a SID or specific ATC instruction.

1.3 Preferential RWY system:

- All hours: TKOF 1. RWY 01
- 12-20 (SUN - FRI) and 11-20 (SAT):

1. RWY 01	2. RWY 14
3. RWY 32	4. RWY 19

RWY 01/19 will be preferred when the tailwind component does not exceed 10kt (including gusts) and the RWY is dry.

- Intersection TKOF RWY 19
 - 20-12: MAX AUW 30t.
 - 12-20: ACFT not permitted.

1.4 Preferred flight paths:

- RWY 01: Follow SID.
Anticipate a requirement to reach 5000ft prior to overflying a residential area.
12-20: Expect to be contained within a sector 360°-120°, over water until leaving 5000ft.
- RWY 14/32: Follow SID.
12-20: Expect to be contained within a sector 360°-120° over water until leaving 5000ft.
- RWY 19: Follow SID.
12-20: ACFT will be routed, as far as possible, clear of noise sensitive areas.

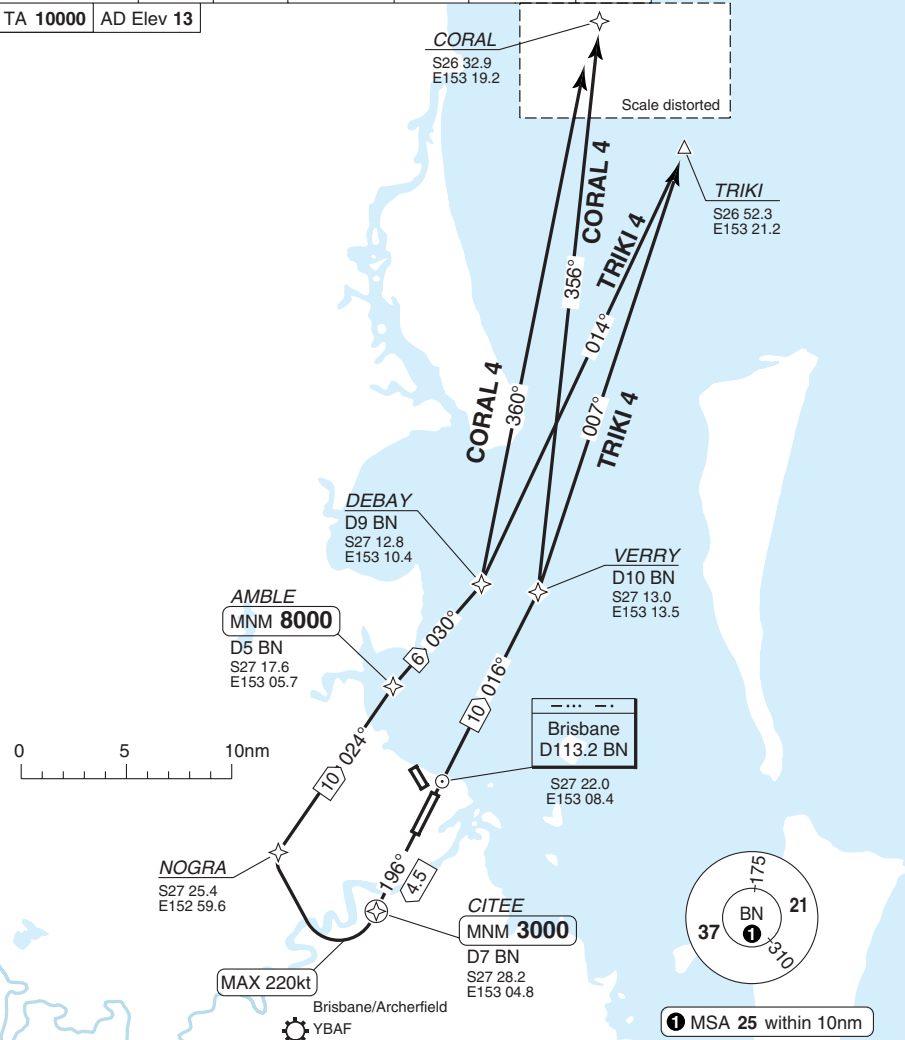
10 - 5

SID RWY 01/19 **RNAV** North

Aeronautical Data © Australian Airservices

Brisbane DLV 118.6	GND 121.7	TWR 120.5	APP 124.7 NW 125.6 SE	RAD 125.7	DEP 128.3 NW 125.6 SE	ATIS 113.2 125.5
------------------------------	---------------------	---------------------	---	---------------------	---	--------------------------------------

TA 10000 AD Elev 13



30 - 1

NAV: GPS permitted instead of DME. Reference waypoint BN VOR.
SPEED: MAX 250kt below 10000ft. RWY 19: MAX 220kt until passing NOGRA.
MNM CLIMB GRADIENT RWY 19: 10.8% to 3000.

RWY	SID	Routing	Altitudes
01	CORAL 4	Climb on 016° - VERRY - CORAL.	
	TRI KI 4	Climb on 016° - VERRY - TRIKI.	
19	CORAL 4	Climb on 196° - CITEE - NOGRA - AMBLE - DEBAY - CORAL.	CITEE MNM 3000 AMBLE MNM 8000
	TRI KI 4	Climb on 196° - CITEE - NOGRA - AMBLE - DEBAY - TRIKI.	CITEE MNM 3000 AMBLE MNM 8000

Change: New spec.

© Navitech - ybbn01daorg0

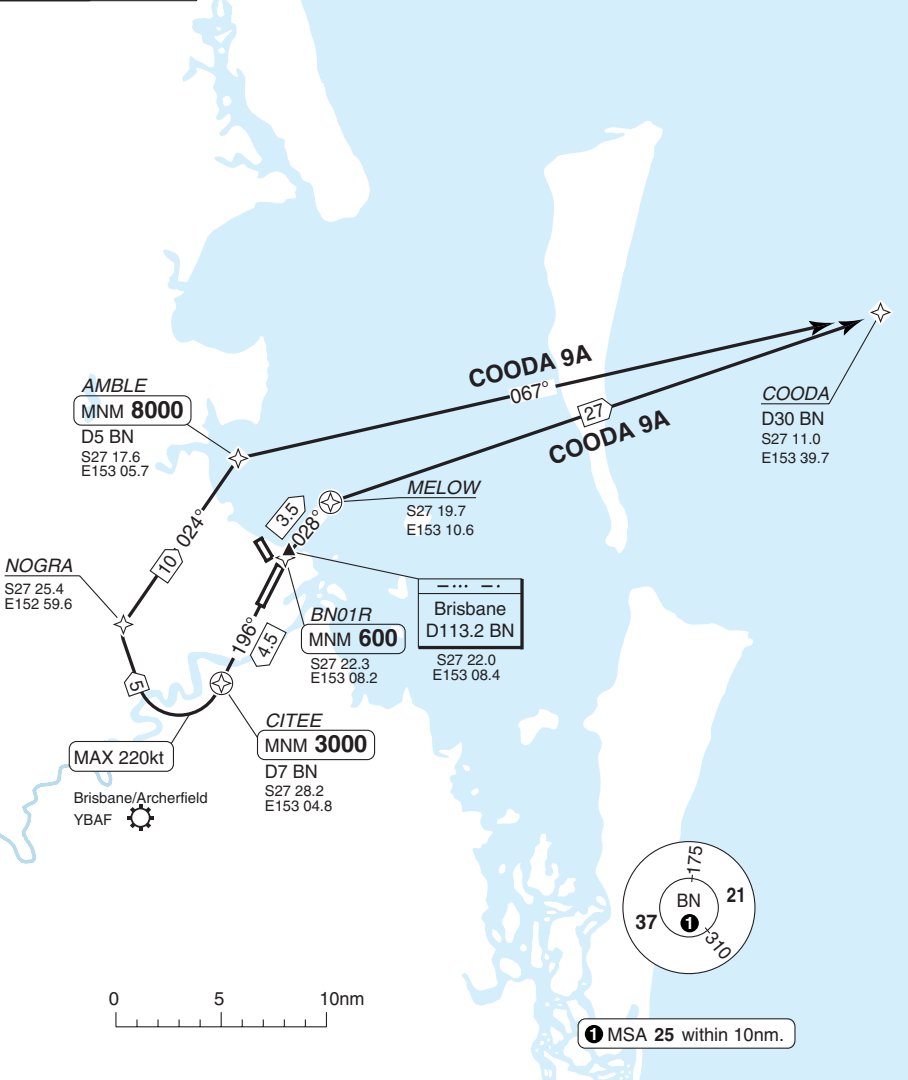
SID RWY 01/19 **RNAV** Northeast

Brisbane DLV 118.6	GND 121.7	TWR 120.5	APP 124.7 NW 125.6 SE	RAD 125.7	DEP 128.3 NW 125.6 SE	ATIS 113.2 125.5
------------------------------	---------------------	---------------------	---	---------------------	---	--------------------------------------

TA **10000** AD Elev **13**

Aeronautical Data © Australian Airservices

30 - 2



NAV: GPS permitted instead of DME. Reference waypoint BN VOR.

SPEED: MAX 250kt below 10000ft. RWY19: MAX 220kt until passing NOGRA.

MNM CLIMB GRADIENT RWY 19: 10.8% to 3000.

RWY	SID	Routeing	Altitudes
01	COODA 9A	Climb on 016° - BN01R - MELOW - COODA.	BN01R MNM 600
19	COODA 9A	Climb on 196° - CITEE - NOGRA - AMBLE - COODA.	CITEE MNM 3000 AMBLE MNM 8000

Change: New spec.

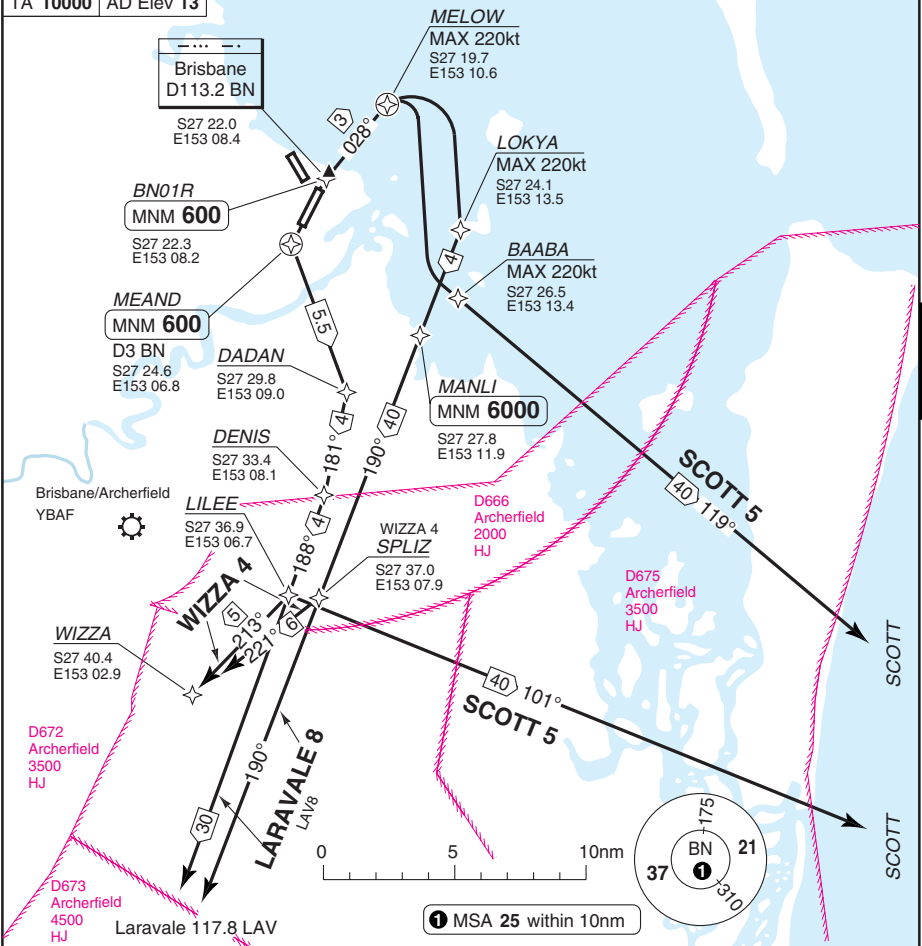
THIS CHART IS A PART OF NAVIGRAPH NDAC AND IS INTENDED FOR FLIGHT SIMULATION USE ONLY

© Navtech - ybbn02daorg0

SID RWY 01/19 **RNAV** South

Aeronautical Data © Australian Airservices

Brisbane DLV 118.6	GND 121.7	TWR 120.5	APP 124.7 NW 125.6 SE	RAD 125.7	DEP 128.3 NW 125.6 SE	ATIS 113.2 125.5
TA 10000	AD Elev 13					



NOTE: To remain in controlled airspace reach 1500ft or above by D7 BN.
NAV: GPS permitted instead of DME. Reference waypoint BN VOR.
SPEED: MAX 250kt below 10000ft.

RWY	SID	Routing	Altitudes
01	LARAVALE 8	Climb on 016° - BN01R - MELOW - LOKYA - MANLI - LARAVALE.	BN01R MNM 600 MANLI MNM 6000
	SCOTT 5	Climb on 016° - BN01R - MELOW - BAABA - SCOTT.	BN01R MNM 600
	WIZZA 4	Climb on 016° - BN01R - MELOW - LOKYA - MANLI - SPLIZ - WIZZA.	BN01R MNM 600 MANLI MNM 6000
19	LARAVALE 8	Climb on 196° - MEAND - DADAN - DENIS - LILEE - LARAVALE.	MEAND MNM 600
	SCOTT 5	Climb on 196° - MEAND - DADAN - DENIS - LILEE - SCOTT.	MEAND MNM 600
	WIZZA 4	Climb on 196° - MEAND - DADAN - DENIS - LILEE - WIZZA.	MEAND MNM 600

© Navitech - ybbn03daorg0

Change: New spec.

THIS CHART IS A PART OF NAVIGRAPH NDAC AND IS INTENDED FOR FLIGHT SIMULATION USE ONLY

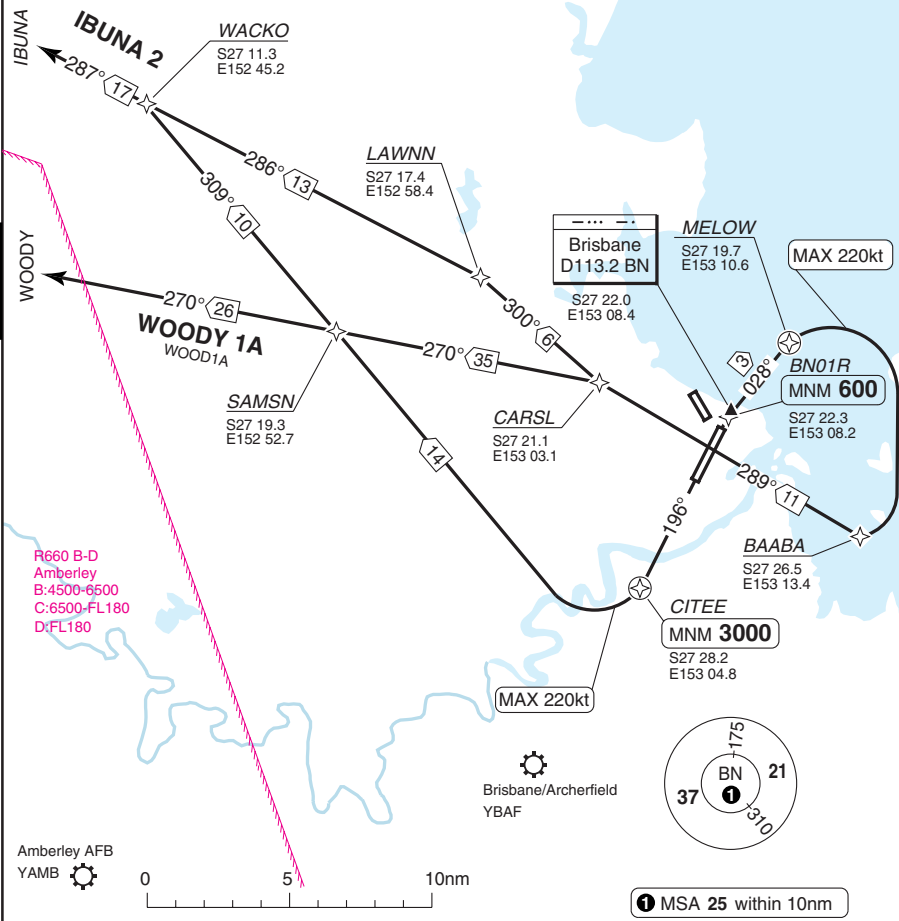
SID RWY 01/19 **RNAV** West

Brisbane DLV 118.6	GND 121.7	TWR 120.5	APP 124.7 NW 125.6 SE	RAD 125.7	DEP 128.3 NW 125.6 SE	ATIS 113.2 125.5
------------------------------	---------------------	---------------------	---	---------------------	---	--------------------------------------

TA **10000** AD Elev **13**

Aeronautical Data © Australian Airservices

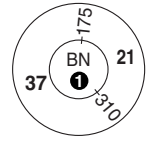
30 - 4



R660 B-D
Amberley
B:4500-6500
C:6500-FL180
D:FL180

Amberley AFB
YAMB

Brisbane/Archerfield
YBAF



1 MSA 25 within 10nm

NAV: GPS permitted instead of DME. Reference waypoint BN VOR.
SPEED: MAX 250kt below 10000ft.

RWY	SID	Routeing	Altitudes
01	IBUNA 2	Climb on 016° - BN01R - MELOW - BAABA - CARSL - LAWNN - WACKO - IBUNA.	BN01R MNM 600
	WOODY 1A	Climb on 016° - BN01R - MELOW - BAABA - CARSL - WOODY.	BN01R MNM 600
19	IBUNA 2	Climb on 196° - CITEE - SAMSN - WACKO - IBUNA.	CITEE MNM 3000
	WOODY 1A	Climb on 196° - CITEE - SAMSN - WOODY.	

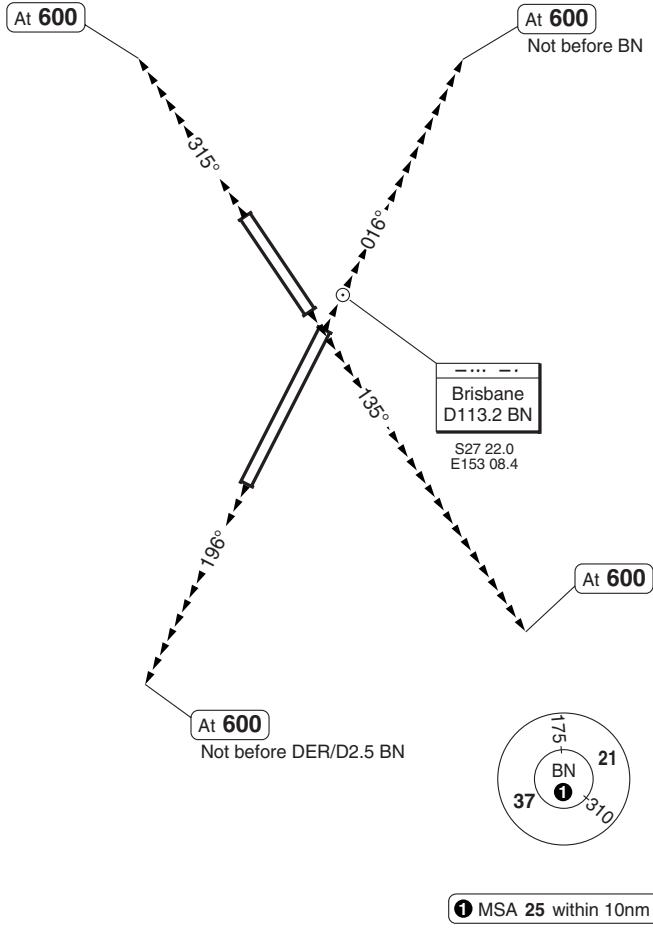
Change: CITEE ALT.

© Navitech - ybbn04daorg0

SID RADAR BRISBANE 1

Aeronautical Data © Australian Airservices

Brisbane DLV 118.6	GND 121.7	TWR 120.5	APP 124.7 NW 125.6 SE	RAD 125.7	DEP 128.3 NW 125.6 SE	ATIS 113.2 125.5
TA 10000	AD Elev 13	Chart not to scale				



30 - 5

COM: When directed, contact DEP for radar vectoring.
NAV: GPS permitted instead of DME. Reference waypoint BN VOR.
SPEED: MAX 250kt below 10000ft.

RWY	SID	Routeing
01	BRISBANE 1	Climb on 016° - at 600 (not before BN) turn to assigned HDG.
19	BRISBANE 1	Climb on 196° - at 600 (not before departure end of RWY/D2.5 BN) turn to assigned HDG.
14	BRISBANE 1	Climb on 135° - at 600 turn to assigned HDG.
32	BRISBANE 1	Climb on 315° - at 600 turn to assigned HDG.

© Navitech - ybbn05daorg0

Reverse side blank

Change: New spec.

STAR CHART INDEX

ALL RWYS

STAR NAME	PAGE
BLAKA 2A/2U	40 - 2
BLAKA 2P/2V	40 - 3
GOLD COAST 2	40 - 4
MALENY 6	40 - 8

RWY 01/19,14

STAR NAME	PAGE
SMOKA 5	40 - 7

RWY 01/19

STAR NAME	PAGE
SAVER 3	40 - 6

RWY 19

STAR NAME	PAGE
QUIET 1, SINNK 5	40 - 5

ARRIVAL PROCEDURE

ARRIVAL PROC. NAME	PAGE
Sector A	40 - 9
Sector B	40 - 10
Sector C	40 - 11
Sector D	40 - 12

STAR **RNAV** BLAKA 2P/2V

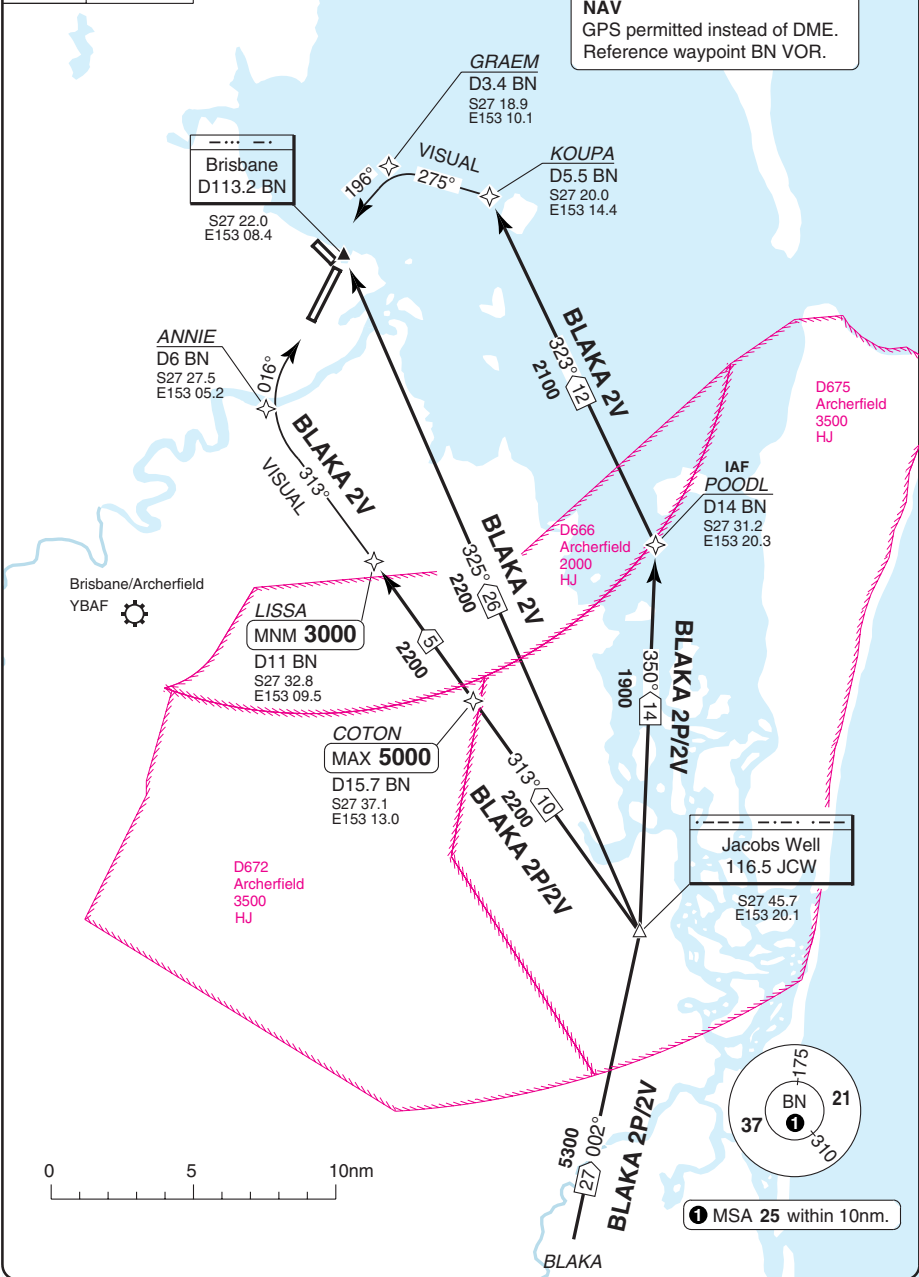
Aeronautical Data © Australian Airservices

Brisbane APP	RAD	TWR	GND	ATIS
124.7 NW	125.7	120.5	121.7	113.2
125.6 SE				125.5

TL ATC AD Elev 13

SPEED
MAX 250kt below 10000ft.

NAV
GPS permitted instead of DME.
Reference waypoint BN VOR.



© Navitech - ybbn03aaorg0

40 - 3

Change: New spec.

THIS CHART IS A PART OF NAVIGRAPH NDAC AND IS INTENDED FOR FLIGHT SIMULATION USE ONLY

STAR RNAV GOLD COAST 2

INTL BRISBANE

Aeronautical Data © Australian Airservices

40 - 4

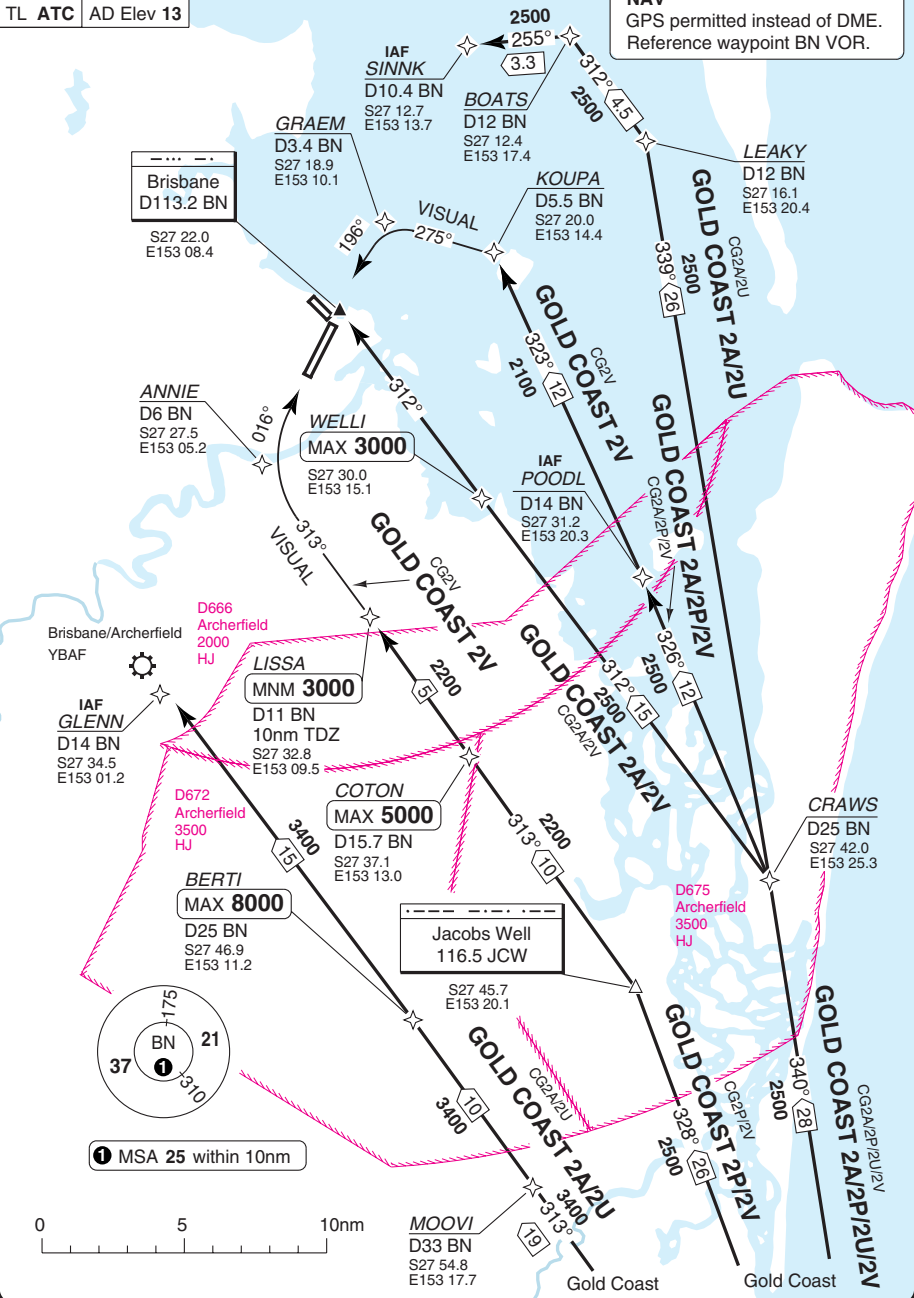
© Navitech - ybbn04aacorg0

Brisbane APP	RAD	TWR	GND	ATIS
124.7 NW	125.7	120.5	121.7	113.2
125.6 SE				125.5

TL	ATC	AD Elev 13
----	-----	------------

SPEED
MAX 250kt below 10000ft.

NAV
GPS permitted instead of DME.
Reference waypoint BN VOR.



Change: New spec.

THIS CHART IS A PART OF NAVIGRAPH NDAC AND IS INTENDED FOR FLIGHT SIMULATION USE ONLY

STAR RWY 19 **RNAV** QUIET 1, SINNK 5

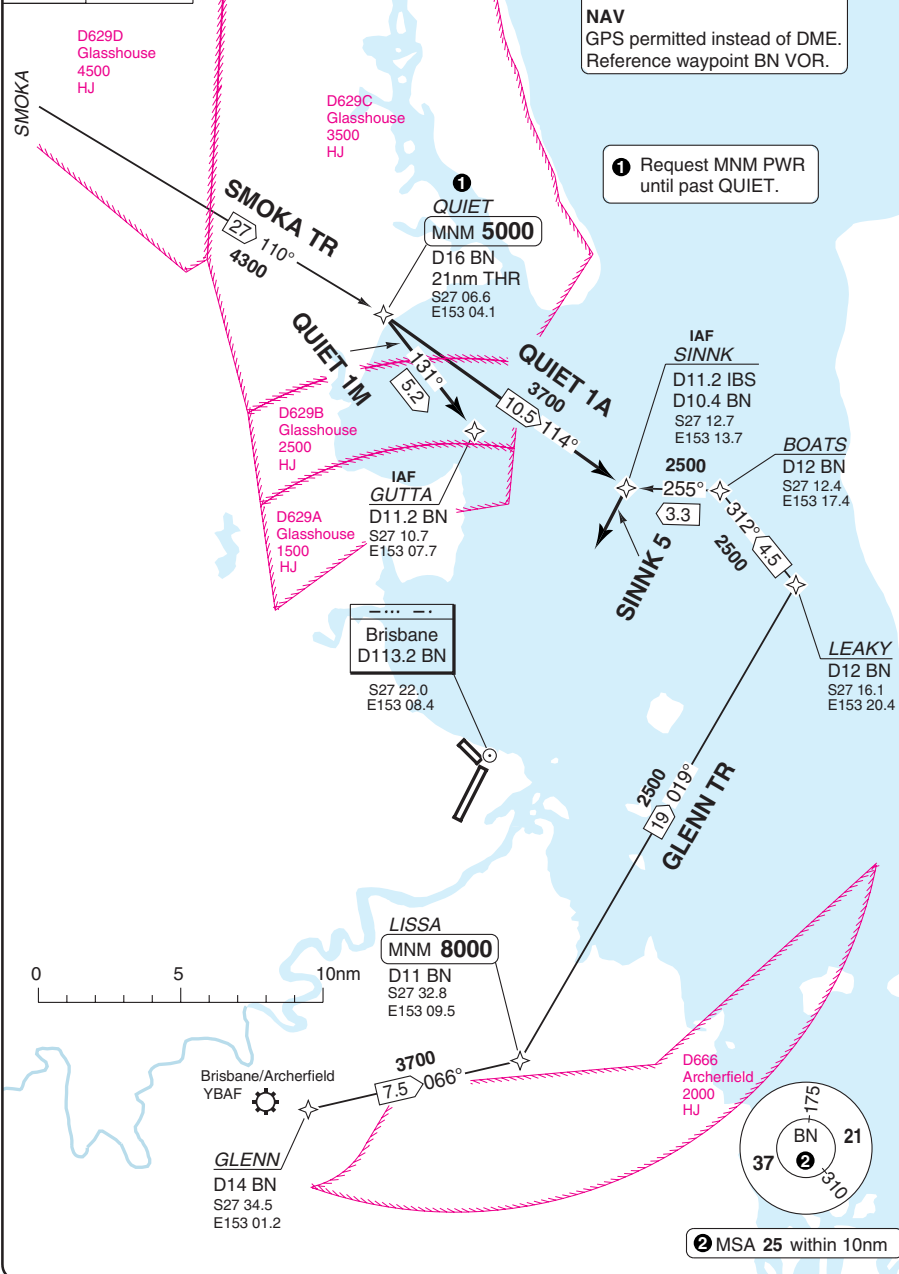
Aeronautical Data © Australian Airservices

Brisbane APP	RAD	TWR	GND	ATIS
124.7 NW	125.7	120.5	121.7	113.2
125.6 SE				125.5

TL	ATC	AD Elev 13
----	-----	------------

SPEED
MAX 250kt below 10000ft.
NAV
GPS permitted instead of DME.
Reference waypoint BN VOR.

1 Request MNM PWR until past QUIET.



40 - 5

© Navitech - ybbn05aairg0

Change: New spec.

THIS CHART IS A PART OF NAVIGRAPH NDAC AND IS INTENDED FOR FLIGHT SIMULATION USE ONLY

Brisbane APP	RAD	TWR	GND	ATIS
124.7 NW	125.7	120.5	121.7	113.2
125.6 SE				125.5

TL ATC AD Elev 13

Brisbane
D113.2 BN
S27 22.0
E153 08.4

IAF
GRAEM
D3.4 BN
S27 18.9
E153 10.1

ANNIE
D6 BN
S27 27.5
E153 05.2

IAF
GLENN
D14 BN
S27 34.5
E153 01.2

Brisbane/
Archerfield
YBAF

LOGAN
MNM 3000
D14 BN
S27 36.0
E153 07.0

SAVER 3A/3U
D12 BN
S27 33.5
E153 12.7

LISSA
MNM 3000
D11 BN
10 nm TDZ
S27 32.8
E153 09.5

KOUPA
D5.5 BN
S27 20.0
E153 14.4

VISUAL
275°

MIKAL
S27 20.8
E153 16.4

BOATS
D12 BN
S27 12.4
E153 17.4

LEAKY
D12 BN
S27 16.1
E154 20.4

AMITY
MAX 8000
D20 BN
S27 25.7
E153 30.4

DUNNI
MNM 4000
S27 28.8
E153 23.4

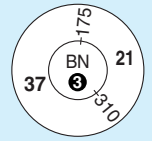
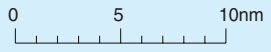
SAVER
D50 BN
S27 31.2
E154 03.6

SPEED
MAX 250kt below 10000ft.

NAV
GPS permitted instead of DME.
Reference waypoint BN VOR.

1 SAVER 3P/3V

3 MSA 25 within 10nm



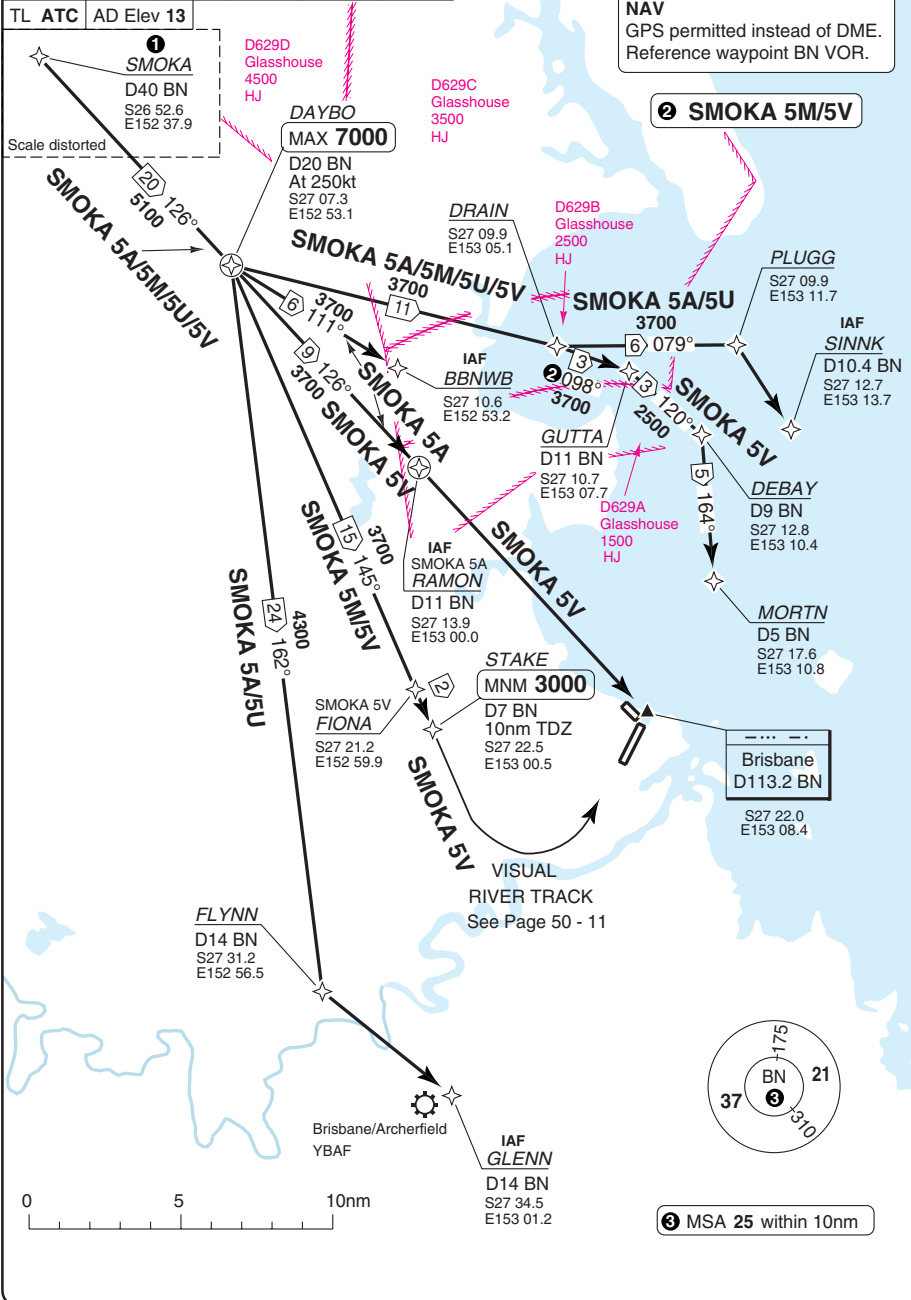
STAR RWY 01/19,14 RNAV SMOKA 5

Brisbane APP	RAD	TWR	GND	ATIS
124.7 NW	125.7	120.5	121.7	113.2
125.6 SE				125.5

SPEED
MAX 250kt below 10000ft.

NAV
GPS permitted instead of DME.
Reference waypoint BN VOR.

Aeronautical Data © Australian Airservices



© Navitech - ybbn07aa.org

40 - 7

Change: New spec.

THIS CHART IS A PART OF NAVIGRAPH NDAC AND IS INTENDED FOR FLIGHT SIMULATION USE ONLY

STAR MALENY 6

Aeronautical Data © Australian Airservices

40 - 8

Brisbane APP	RAD	TWR	GND	ATIS
124.7 NW	125.7	120.5	121.7	113.2
125.6 SE				125.5

TL ATC AD Elev 13

Maleny
115.9 MLY

S26 44.7
E152 45.7

3700
121 141°
MALENY 6

3000
101 140°

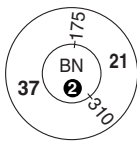
GAYLA
D30 BN
S26 55.6
E152 52.2

2000
010 140°

1
BURPA
MAX 6000

D20 BN
S27 04.4
E152 57.5

1 CAUTION
Traffic south of BURPA
at 7000ft.



2 MSA 25 within 10nm



SPEED
MAX 250kt below 10000ft.
NAV
GPS permitted instead of DME.
Reference waypoint BN VOR.

D629D
Glasshouse
4500
HJ

D629C
Glasshouse
3500
HJ

D629B
Glasshouse
2500
HJ

D629A
Glasshouse
1500
HJ

IAF
Brisbane
D113.2 BN
S27 22.0
E153 08.4

RWY32: VISUAL
for Left base

Brisbane/Archerfield
YBAF

© Navitech - ybbn08aaorg0

Change: New spec.

THIS CHART IS A PART OF NAVIGRAPH NDAC AND IS INTENDED FOR FLIGHT SIMULATION USE ONLY

ARRIVAL PROC Sector A DME or GPS

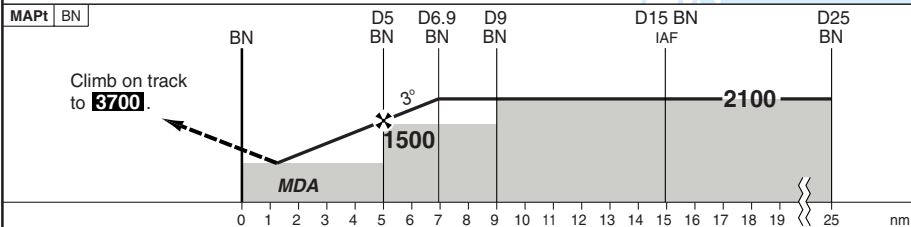
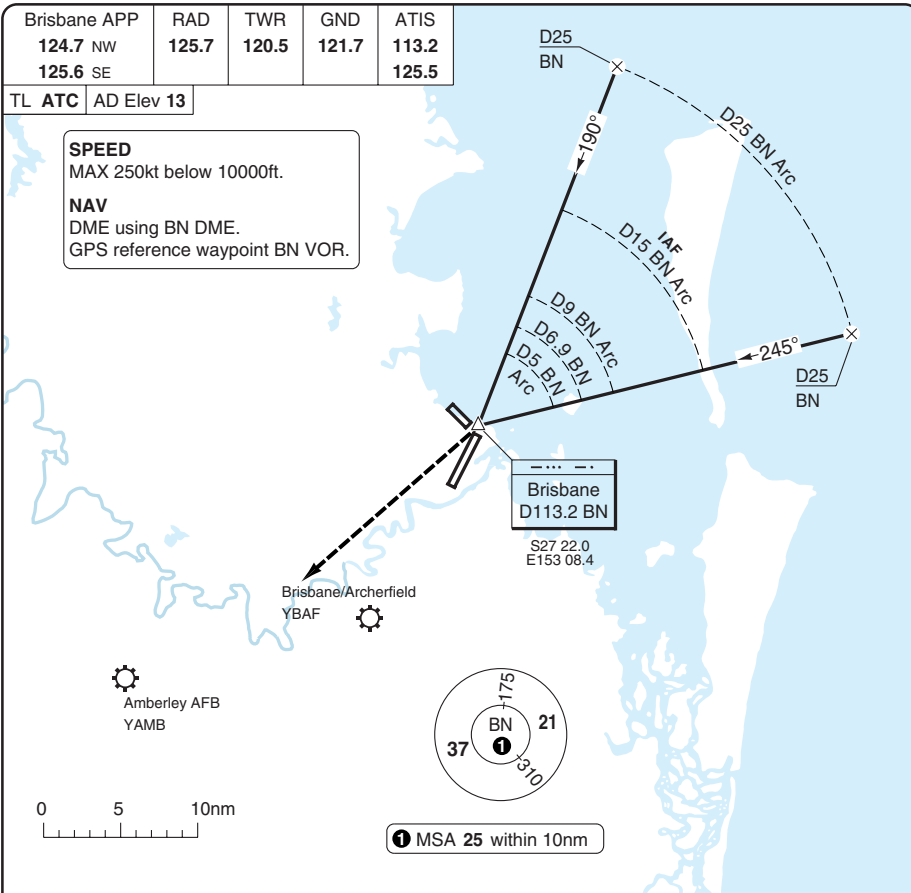
Aeronautical Data © Australian Airservices

Brisbane APP	RAD	TWR	GND	ATIS
124.7 NW	125.7	120.5	121.7	113.2
125.6 SE				125.5

TL ATC AD Elev 13

SPEED
MAX 250kt below 10000ft.

NAV
DME using BN DME.
GPS reference waypoint BN VOR.



ACFT	DME or GPS Circling
A	650 (637) 2.4km
B	
C	750 (737) 4.0km
D	850 (837) 5.0km

DME	3.0° ALT
BN	2100
6.9	1820
6	1500
5	1180
4	850
3	750
2.6	650
2.3	650

GS	80	100	120	140	160
ROD 3.0°	430	540	640	750	860

40 - 9

© Navitech - ybbn09aao00

Change: New spec.

THIS CHART IS A PART OF NAVIGRAPH NDAC AND IS INTENDED FOR FLIGHT SIMULATION USE ONLY

ARRIVAL PROC Sector B DME or GPS

Aeronautical Data © Australian Airservices

40 - 10

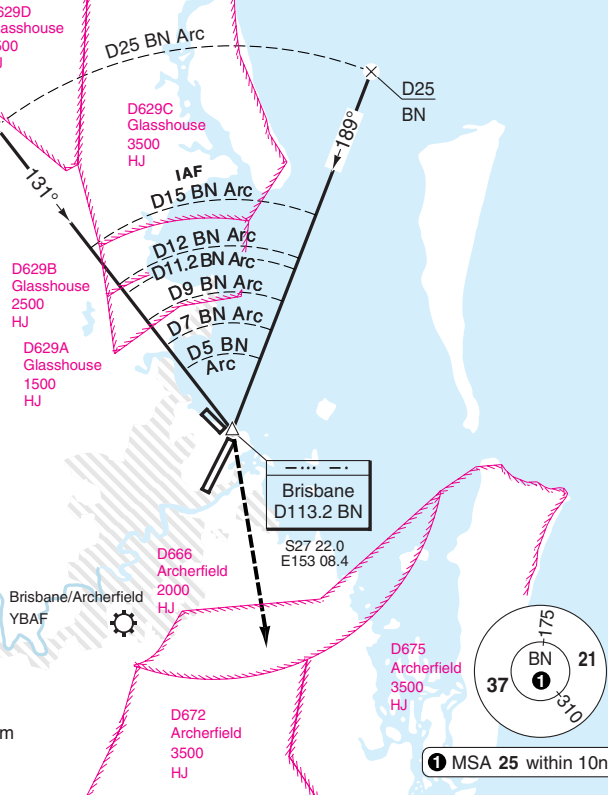
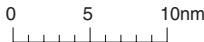
Brisbane APP	RAD	TWR	GND	ATIS
124.7 Northwest	125.7	120.5	121.7	113.2
125.6 Southeast				125.5

TL ATC AD Elev 13

SPEED
MAX 250kt
below 10000ft.

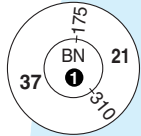
NAV
DME using BN DME.
GPS reference waypoint
BN VOR.

Amberley AFB
YAMB

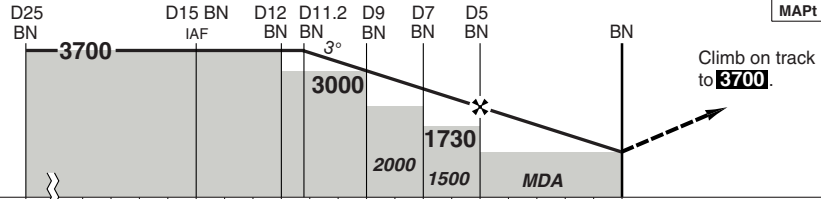


Brisbane
D113.2 BN

S27 22.0
E153 08.4



MSA 25 within 10nm



MAPT BN

Climb on track to **3700**.

nm 25 19 18 17 16 15 14 13 12 11 10 9 8 7 6 5 4 3 2 1 0

ACFT **DME or GPS Circling**

STATE	ACFT	Altitude	Distance
A	650 (637)	2.4km	
B	750 (737)	4.0km	
C	850 (837)	5.0km	

DME	3.0° ALT
BN	
11.2	3700
10	3320
9	3000
7	2370
5	1730
2.2	850
1.9	750
1.6	650

GS	80	100	120	140	160
ROD 3.0°	430	540	640	750	860

© Navitech - ybbn10aaog0

Change: New spec.

ARRIVAL PROC Sector C DME or GPS

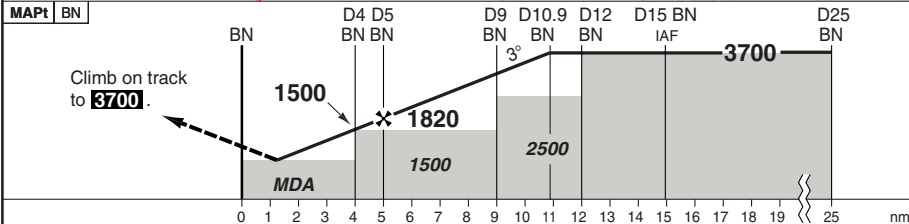
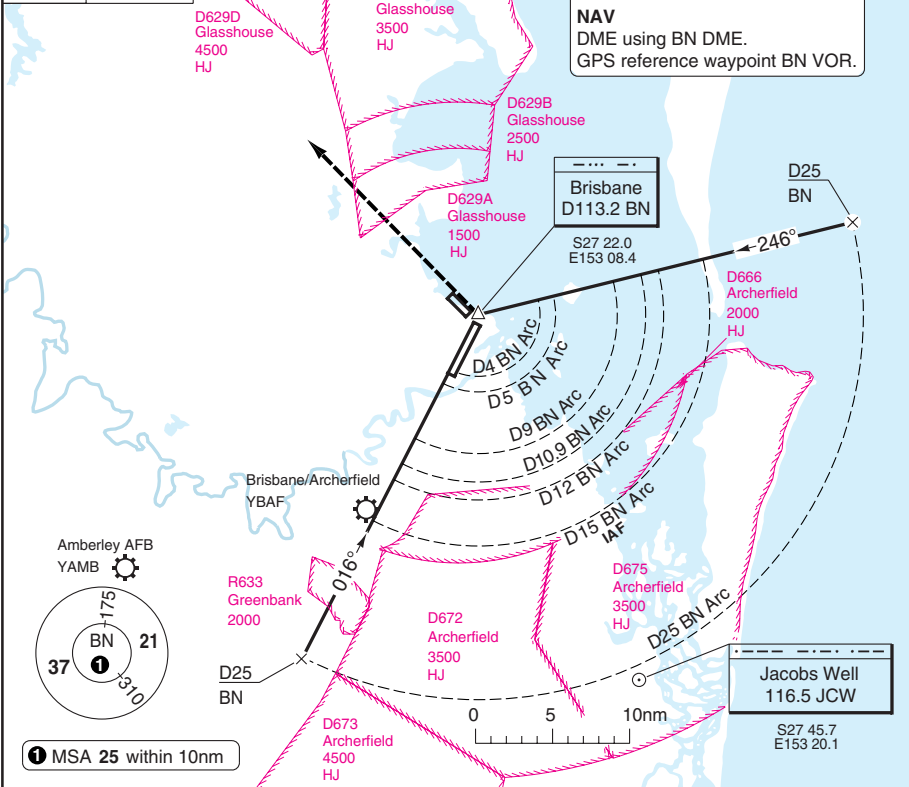
Aeronautical Data © Australian Airservices

Brisbane APP	RAD	TWR	GND	ATIS
124.7 NW	125.7	120.5	121.7	113.2
125.6 SE				125.5

TL ATC AD Elev 13

SPEED
MAX 250kt below 10000ft.

NAV
DME using BN DME.
GPS reference waypoint BN VOR.



ACFT	DME or GPS Circling
A	900 (887) 2.4km
B	900 (887) 4.0km
C	900 (887) 5.0km
D	900 (887) 5.0km

DME	3.0° ALT
BN	3700
10.9	3090
9	2460
7	2140
6	1820
5	1500
4	1190
3	900
2.1	

GS	80	100	120	140	160
ROD 3.0°	430	530	640	740	850

Change: New spec.

THIS CHART IS A PART OF NAVIGRAPH NDAC AND IS INTENDED FOR FLIGHT SIMULATION USE ONLY

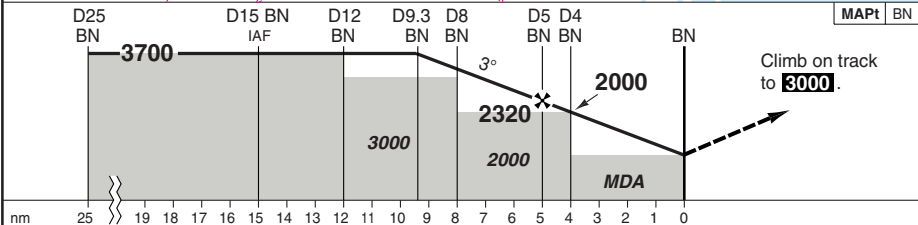
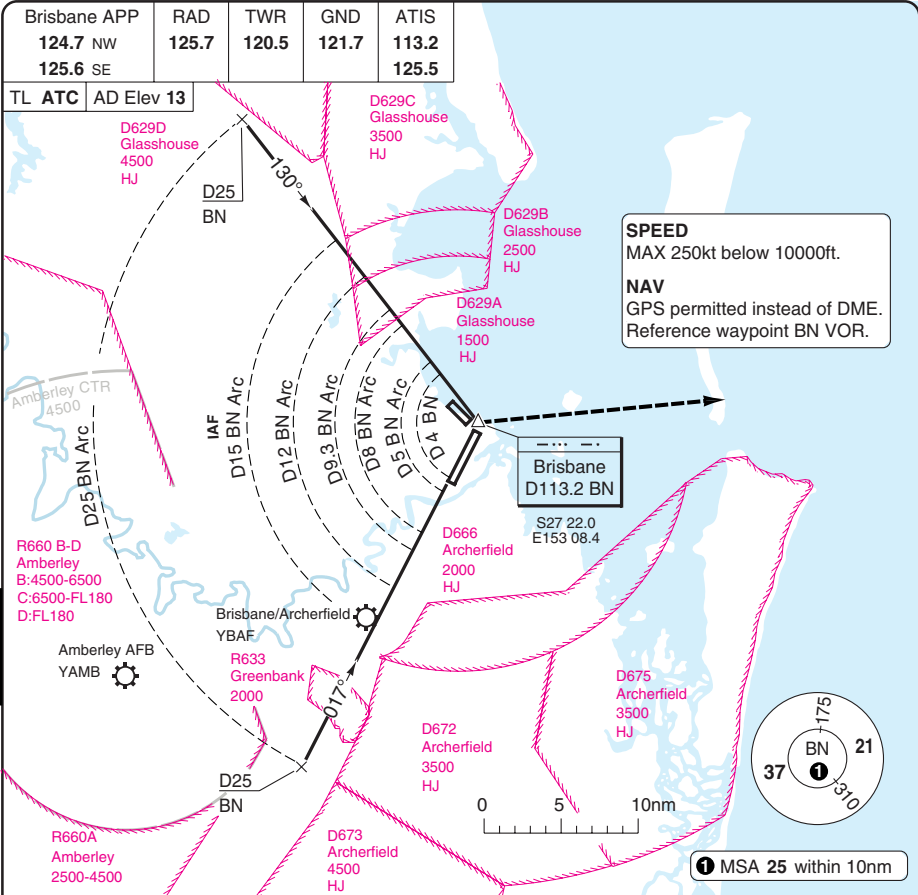
© Navtech - ybbn11aorg0

40 - 11

ARRIVAL PROC Sector D DME or GPS

Aeronautical Data © Australian Airservices

40 - 12



DME or GPS Circling		DME BN	3.0° ALT
A	1000 (987) 2.4km	9.3	3700
B		8	3280
C	1000 (987) 4.0km	7	2960
D	1000 (987) 5.0km	5	2320
		4	2000
		3	1690
		1	1050
		0.9	1000

GS	80	100	120	140	160
ROD 3.0°	430	530	640	740	850

© Navitech - ybbn12aaorg0

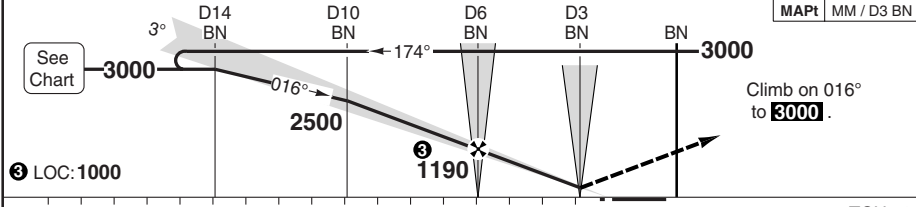
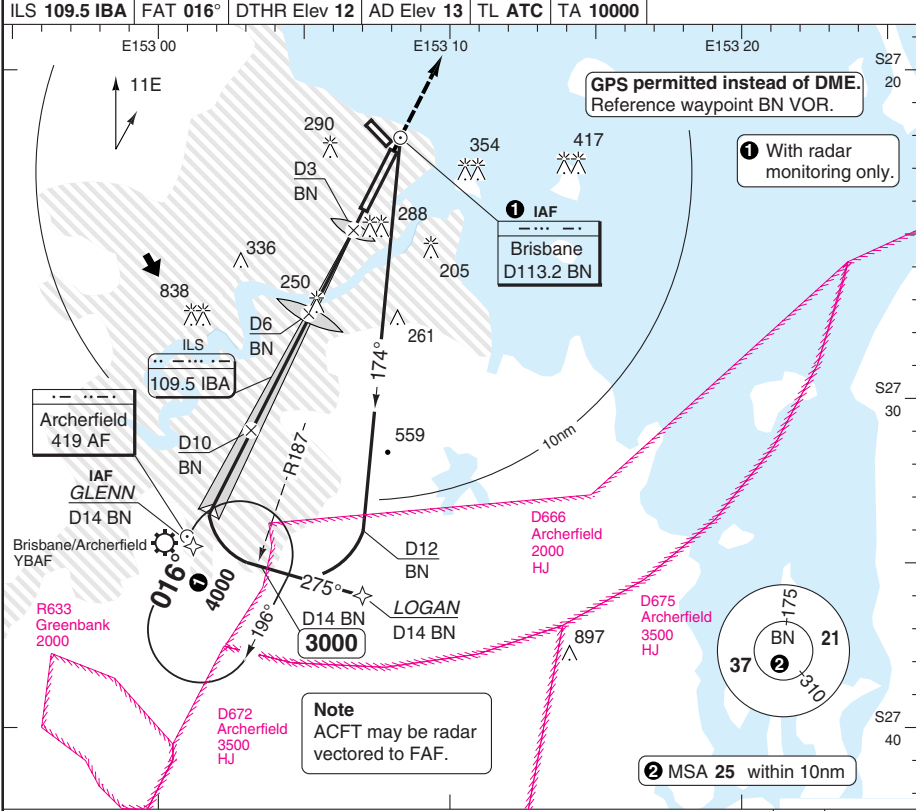
Change: New spec.

THIS CHART IS A PART OF NAVIGRAPH NDAC AND IS INTENDED FOR FLIGHT SIMULATION USE ONLY

ILS RWY 01

PANS OPS Aeronautical Data © Australian Airservices

Brisbane APP 124.7 NW 125.6 SE	RAD 125.7	TWR 120.5	GND 121.7	ATIS 113.2 125.5
ILS 109.5 IBA	FAT 016°	DTHR Elev 12	AD Elev 13	TL ATC TA 10000



STATE	ACFT	ILS	LOC+DME	Circling	DME BN	3.1° ALT	LDA 3500x45 11482x147ft T 3° (50)
A				650 (637) 2.4km	11.5	3000	
B	220 (208)	560 (547)	750 (737) 4.0km	10	2510		
C	^a		850 (837) 5.0km	9	2180		
D				8	1860		
				7	1530		
				6	1210		
				5	880		
				4.0	560		

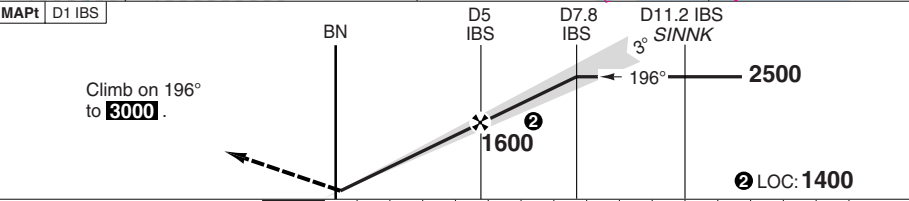
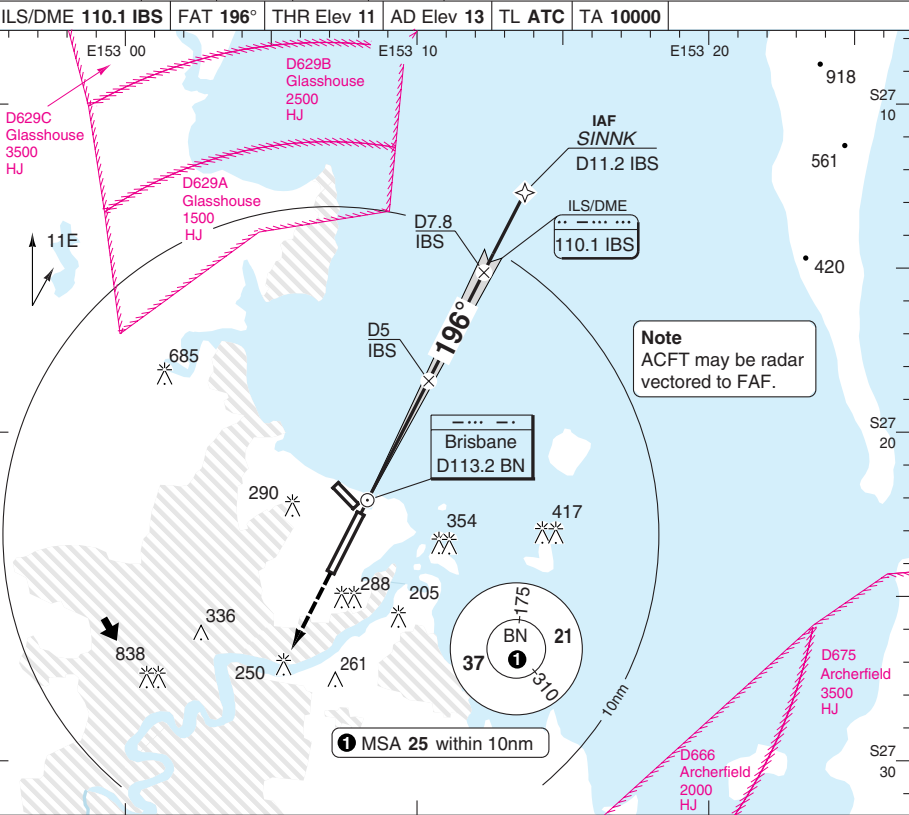
① Includes Airbus A380.

ILS Y RWY 19

Aeronautical Data © Australian Airservices

50 - 2

Brisbane APP 124.7 NW 125.6 SE	RAD 125.7	TWR 120.5	GND 121.7	ATIS 113.2 125.5	
ILS/DME 110.1 IBS	FAT 196°	THR Elev 11	AD Elev 13	TL ATC	TA 10000



TCH 50						DME IBS						3.0° ALT		DME BN		3.0° ALT		LDA 3560x45 11679x147ft T 3° (50)	
ACFT	ILS+DME	LOC+DME	Circling		a Includes Airbus A380.	DME IBS	3.0° ALT	DME BN	3.0° ALT										
A	220 (209) 0.8km a	410 (397) 1.3km	650 (637) 2.4km			7.9	2500	7.1	2500										
B			750 (737) 4.0km			7	2220	6	2150										
C			850 (837) 5.0km			6	1900	5	1840										
D						5	1580	4	1520										
				4	1270	3	1210												
				3	950	2	890												
				2	640	1	570												
				1.3	410	0.5	410												
GS	80	100	120	140	160														
ROD 3.0°	430	530	640	740	850														

© Navtech - ybbn02tap00

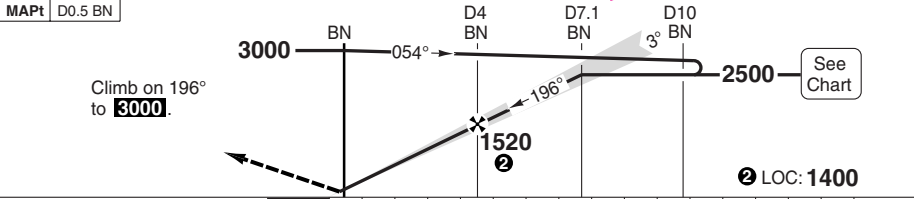
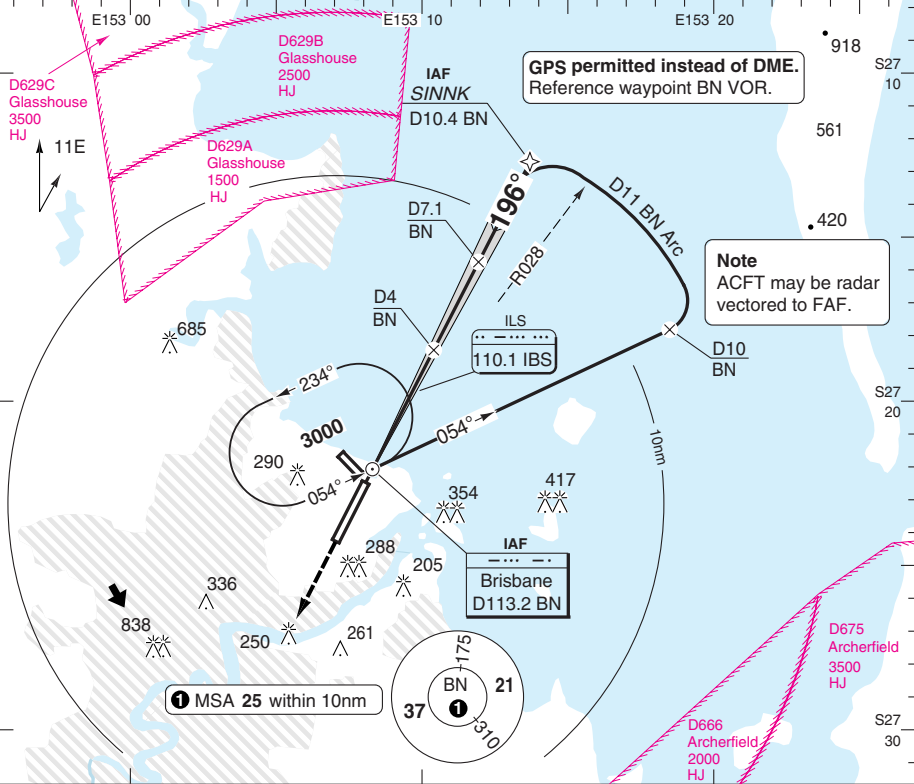
Change: Minima.

ILS Z RWY 19

Aeronautical Data © Australian Airservices

Brisbane APP 124.7 NW 125.6 SE	RAD 125.7	TWR 120.5	GND 121.7	ATIS 113.2 125.5
--------------------------------------	--------------	--------------	--------------	------------------------

ILS 110.1 IBS	FAT 196°	THR Elev 11	AD Elev 13	TL ATC	TA 10000
---------------	----------	-------------	------------	--------	----------



TCH 50

ACFT	ILS+DME	LOC+DME	Circling
A	220 (209) 0.8km a	410 (397) 1.3km	650 (637) 2.4km
B			750 (737) 4.0km
C			850 (837) 5.0km
D			

a Includes Airbus A380.

DME IBS	3.0° ALT	LDA 3560x45 11679x147ft T 3° (50)
7.9	2500	
7	2220	
6	1900	
5	1600	
4	1270	
3	950	
2	640	
1.3	410	

GS	80	100	120	140	160
ROD 3.0°	430	530	640	740	850

Change: Minima.

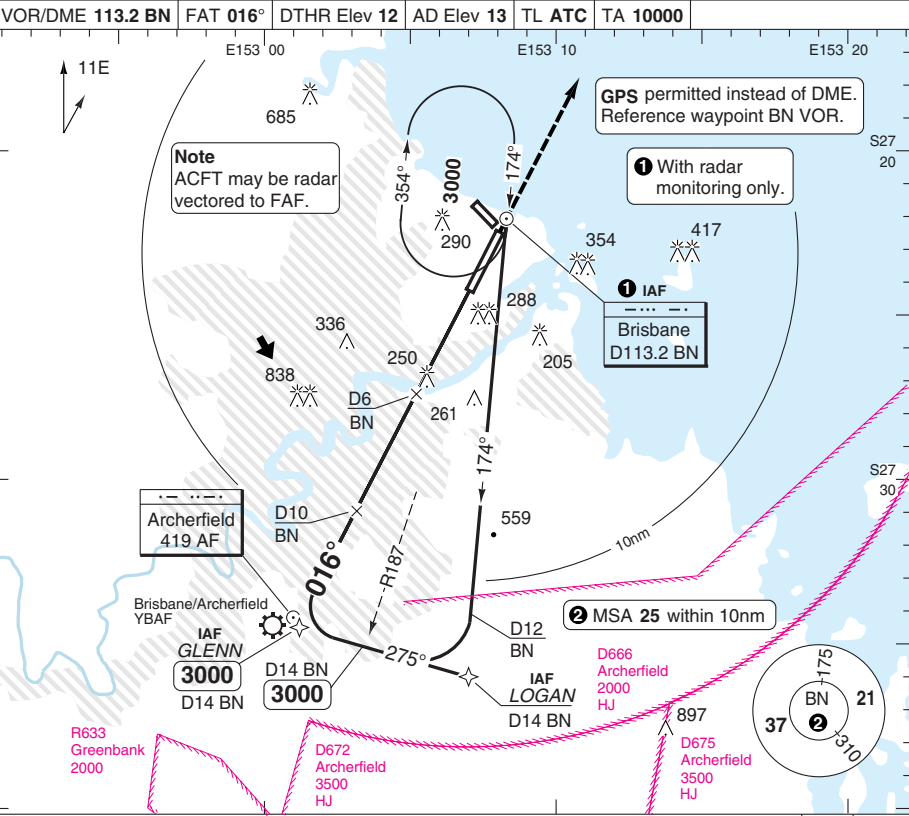
© Navtech - ybbn03aip00

50 - 3

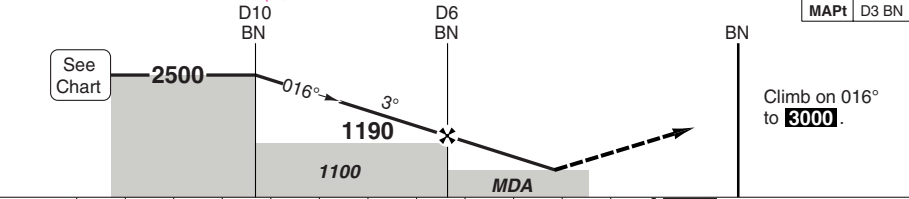
VOR RWY 01

PANS OPS Aeronautical Data © Australian Airservices

Brisbane APP 124.7 NW 125.6 SE	RAD 125.7	TWR 120.5	GND 121.7	ATIS 113.2 125.5
VOR/DME 113.2 BN		FAT 016°	DTHR Elev 12	AD Elev 13
TL ATC		TA 10000		



50 - 4



ACFT		VOR+DME	Circling					DME BN	3.1° ALT	LDA 3500x45 11482x147ft T 3° (50)
A			650 (637)				10	2500		
B	570 (557)	3.2km	750 (737)				9	2180		
C			850 (837)				8	1860		
D							7	1530		
							6	1210		
							5	880		
							4.1	570		
GS	80	100	120	140	160					
ROD 3.1°	440	550	650	760	870					

© Navtech - ybbn04iap00

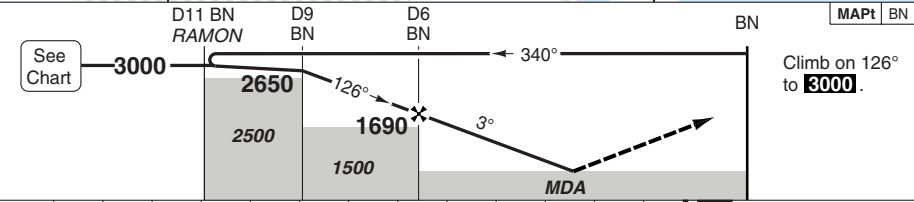
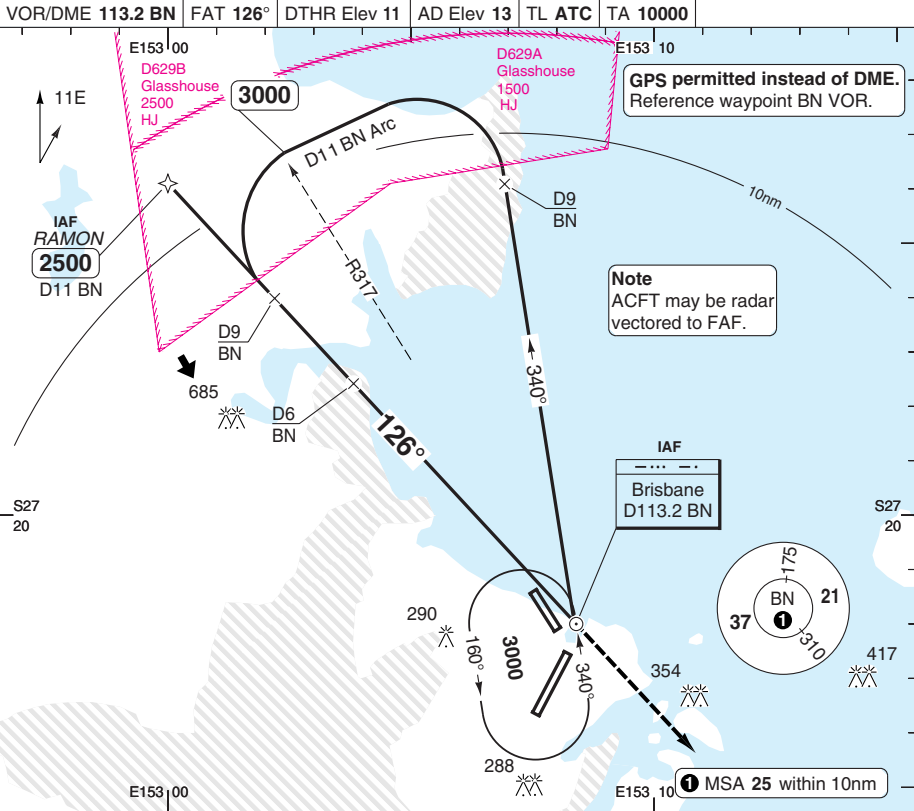
Change: New spec.

THIS CHART IS A PART OF NAVIGRAPH NDAC AND IS INTENDED FOR FLIGHT SIMULATION USE ONLY

VOR RWY 14

PANS OPS Aeronautical Data © Australian Airservices

Brisbane APP 124.7 NW 125.6 SE	RAD 125.7	TWR 120.5	GND 121.7	ATIS 113.2 125.5	
VOR/DME 113.2 BN	FAT 126°	DTHR Elev 11	AD Elev 13	TL ATC	TA 10000



STATE	ACFT	VOR+DME	Circling					DME BN	3.0° ALT	LDA 1700x30
A			650 (637)				7	2500	5577x98ft T 3° (50)	
B	600 (587)	3.2km	750 (737)				6	2180		
C			850 (837)				5	1860		
D							4	1540		
							3	1220		
							2	900		
							1	580		
							0.5	410		
	GS	80	100	120	140	160				
	ROD 3.0°	430	540	650	750	860				

© Navtech - ybbn05iap00

50 - 5

NALS

Change: Minima.

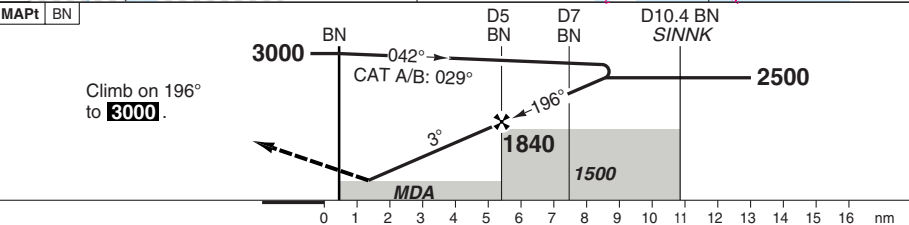
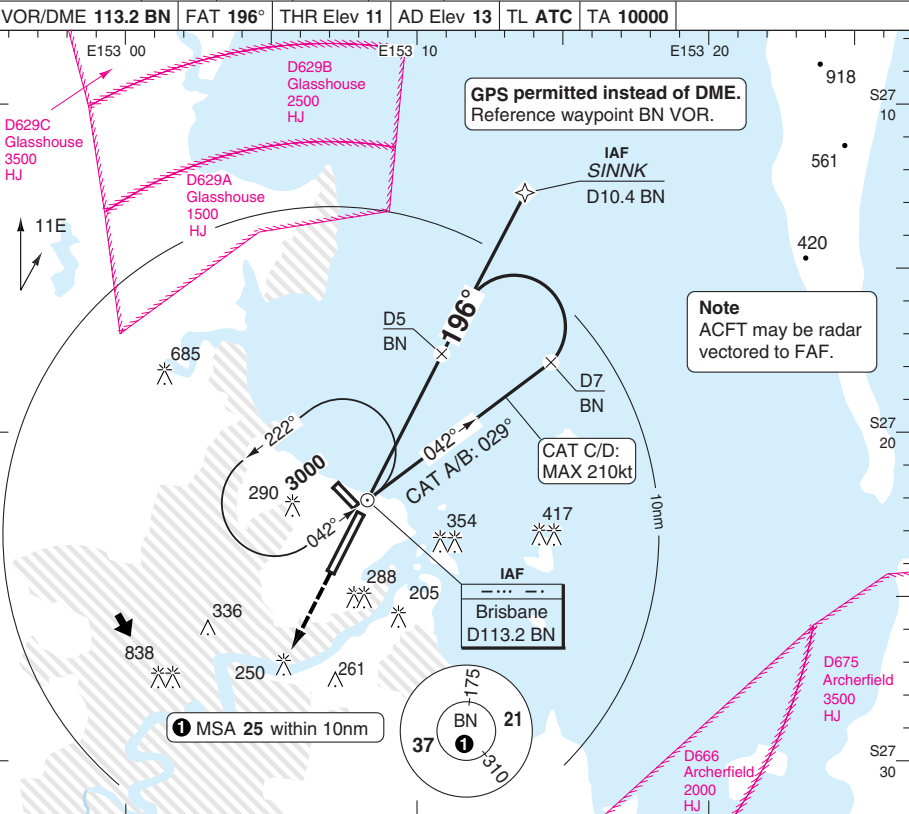
THIS CHART IS A PART OF NAVIGRAPH NDAC AND IS INTENDED FOR FLIGHT SIMULATION USE ONLY

VOR RWY 19

Aeronautical Data © Australian Airservices

50 - 9

Brisbane APP 124.7 NW 125.6 SE	RAD 125.7	TWR 120.5	GND 121.7	ATIS 113.2 125.5		
VOR/DME 113.2 BN		FAT 196°	THR Elev 11	AD Elev 13	TL ATC	TA 10000



ACFT	VOR+DME	Circling	DME	ALT	LDA 3560x45 11679x147ft T 3° (50)		
A	410 (397) 2.2km	650 (637) 2.4km	3.1°	3000			
B		750 (737) 4.0km	10.1	2330			
C		850 (837) 5.0km	7	2010			
D			6	1690			
		5	1360				
		4	1040				
GS	80	100	120	140	160	3	710
ROD 3.1°	440	550	650	760	870	2.7	600

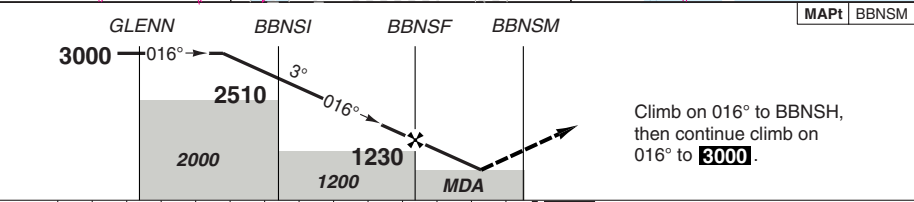
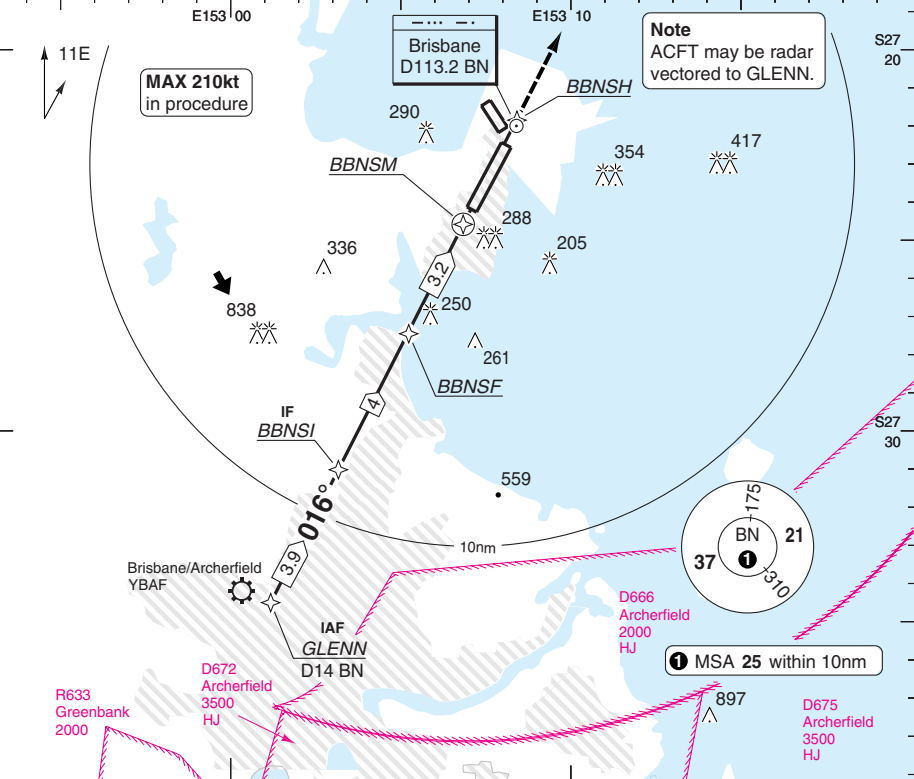
© Navtech - ybbn06iap00

RNAV (GNSS) Z RWY 01

PANS OPS Aeronautical Data © Australian Airservices

Brisbane APP 124.7 NW 125.6 SE	RAD 125.7	TWR 120.5	GND 121.7	ATIS 113.2 125.5
--------------------------------------	--------------	--------------	--------------	------------------------

RNAV	FAT 016°	DTHR Elev 12	AD Elev 13	TL ATC	TA 10000
------	----------	--------------	------------	--------	----------



nm	14	13	12	11	10	9	8	7	6	5	4	3	2	1	0
ACFT	A		B		C		D								
LNAV	560 (547)		3.1km		750 (737)		850 (837)								
Circling	650 (637)		3.1km		4.0km		5.0km								
THR	01	8.8	7	6	5	4	3	2	1.1						
3.0° ALT	3000	2450	2130	1810	1500	1180	860	560							
LDA 3500x45	11482x147ft		T 3° (50)												
GS	80	100	120	140	160										
ROD 3.0°	430	540	640	750	850										

© Navtech - ybbn07iaip00

50 - 7

FALS

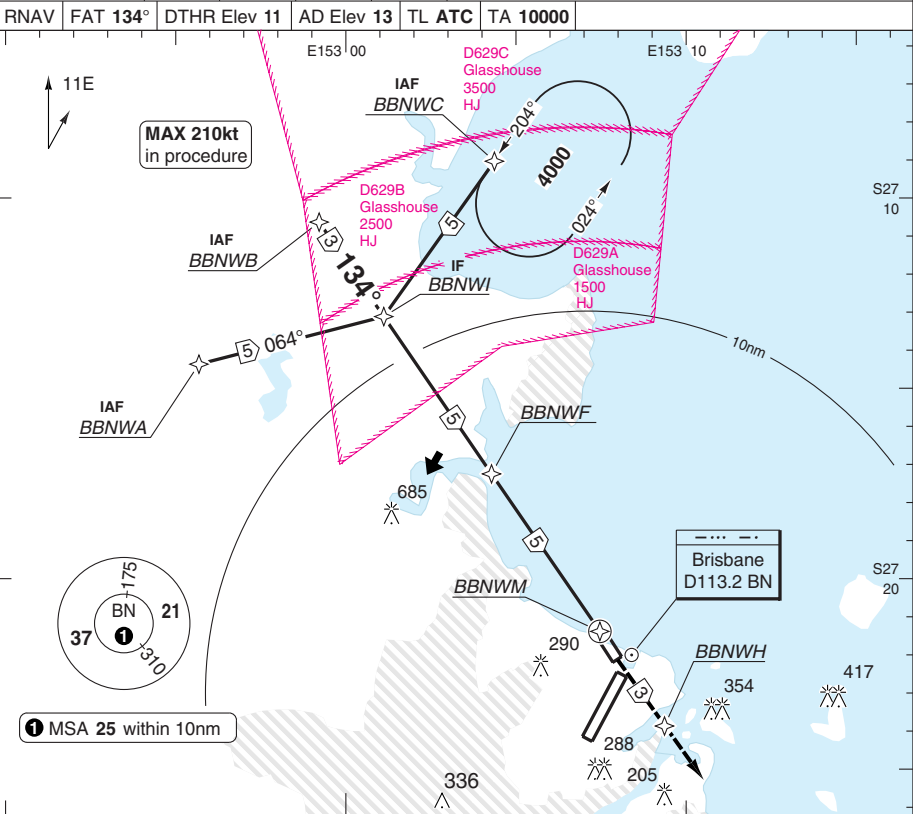
Change: New spec.

THIS CHART IS A PART OF NAVIGRAPH NDAC AND IS INTENDED FOR FLIGHT SIMULATION USE ONLY

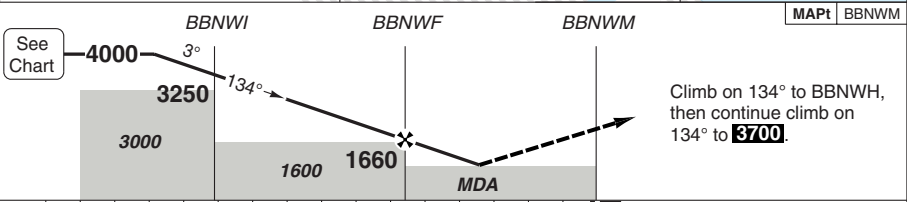
RNAV (GNSS) RWY 14

PANS OPS Aeronautical Data © Australian Airservices

Brisbane APP 124.7 NW 125.6 SE	RAD 125.7	TWR 120.5	GND 121.7	ATIS 113.2 125.5	
RNAV	FAT 134°	DTHR Elev 11	AD Elev 13	TL ATC	TA 10000



50 - 8



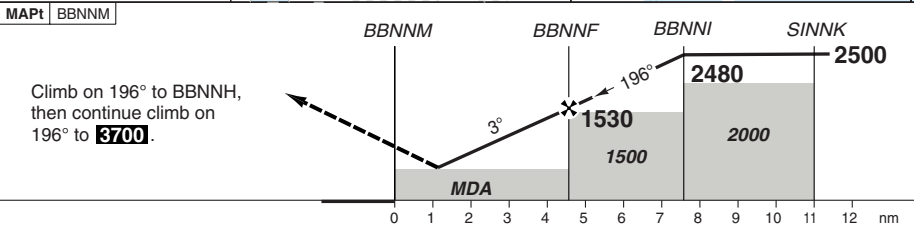
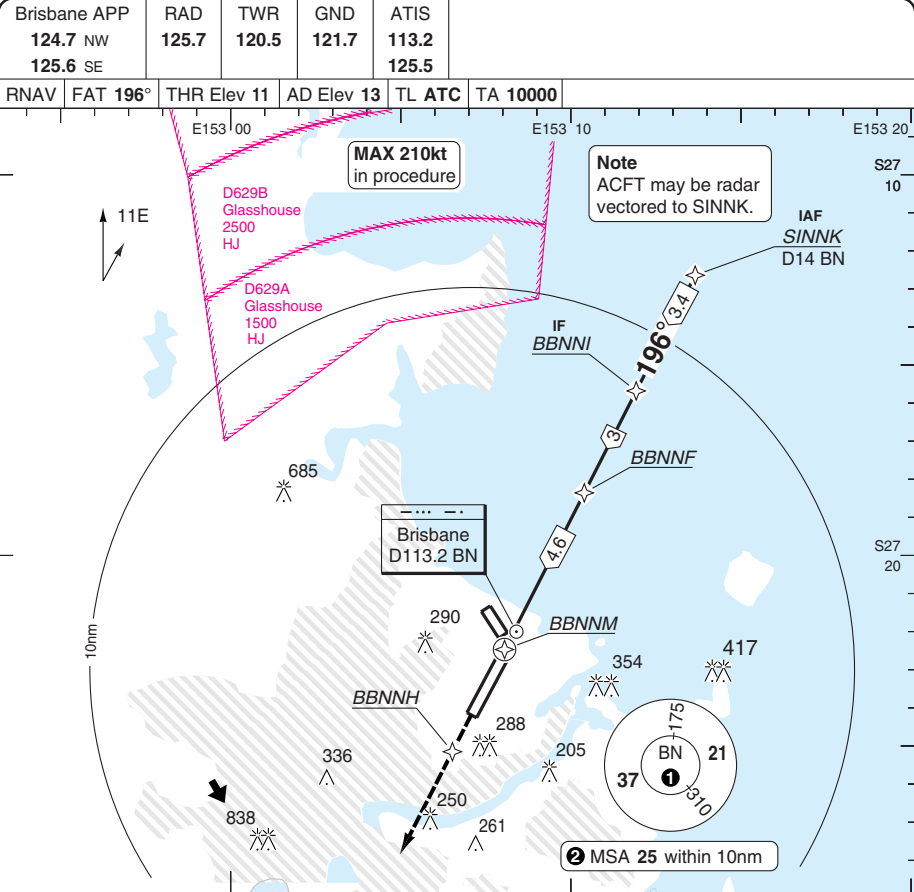
© Navtech - ybbn08aip00

nm	16	15	14	13	12	11	10	9	8	7	6	5	4	3	2	1	0
ACFT	STATE																
A	LNAV																
B	Circling																
C	650 (637) 2.4km																
D	750 (737) 4.0km																
	850 (837) 5.0km																
GS	80	100	120	140	160												
ROD 3.0°	430	540	640	750	860												
THR	19	7.6	7	6	5	4	3	2	1	1.2							
3.0° ALT	2480	2300	1980	1660	1340	1020	700	430									
LDA 1700x30	5577x98ft										T 3° (50)						
NALS																	

Change: New spec.

RNAV (GNSS) Z RWY 19

PANS OPS Aeronautical Data © Australian Airservices



ACFT	LNAV	Circling	THR	3.0° ALT	LDA 3560x45 11679x147ft T 3° (50)		
A	430 (417) 2.3km	650 (637) 2.4km	14	4000	FALS		
B		750 (737) 4.0km	11	3580			
C		850 (837) 5.0km	9	2940			
D		6	1980				
	5	1660					
	3	1020					
GS	80	100	120	140	160	2	700
ROD 3.0°	430	540	640	750	860	1.2	430

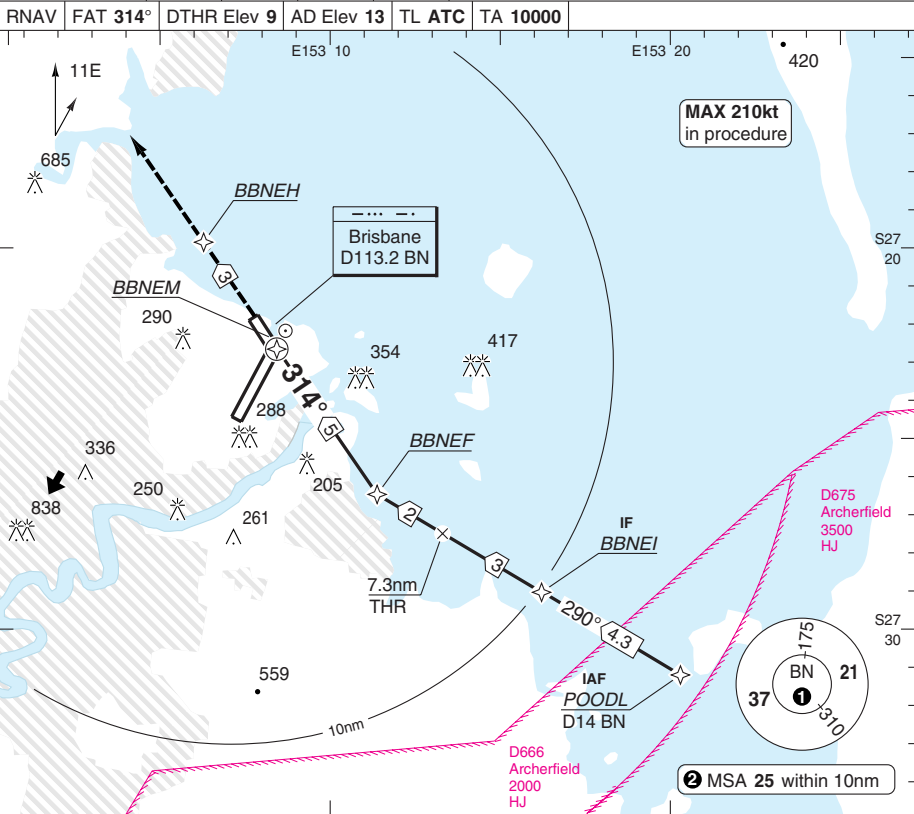
© Navtech - ybbn09ajap00

50 - 9

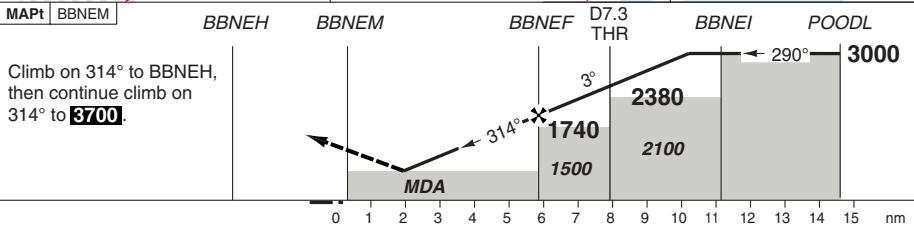
RNAV (GNSS) RWY 32

PANS OPS Aeronautical Data © Australian Airservices

Brisbane APP 124.7 NW 125.6 SE	RAD 125.7	TWR 120.5	GND 121.7	ATIS 113.2 125.5	
RNAV	FAT 314°	DTHR Elev 9	AD Elev 13	TL ATC	TA 10000



50 - 10



ACFT	LNAV	Circling	THR	3.0° ALT	LDA 1700x30
A	490 (477) 2.7km	650 (637) 2.7km	32	3000	5577x98ft T 3° (50)
B		750 (737) 4.0km	9	2380	
C		850 (837) 5.0km	7	2070	
D			6	1750	
			5	1430	
			4	1110	
			3	790	
			2	490	
			1.1		

GS	80	100	120	140	160
ROD 3.0°	430	540	640	750	850

© Navtech - ybbn10iap00

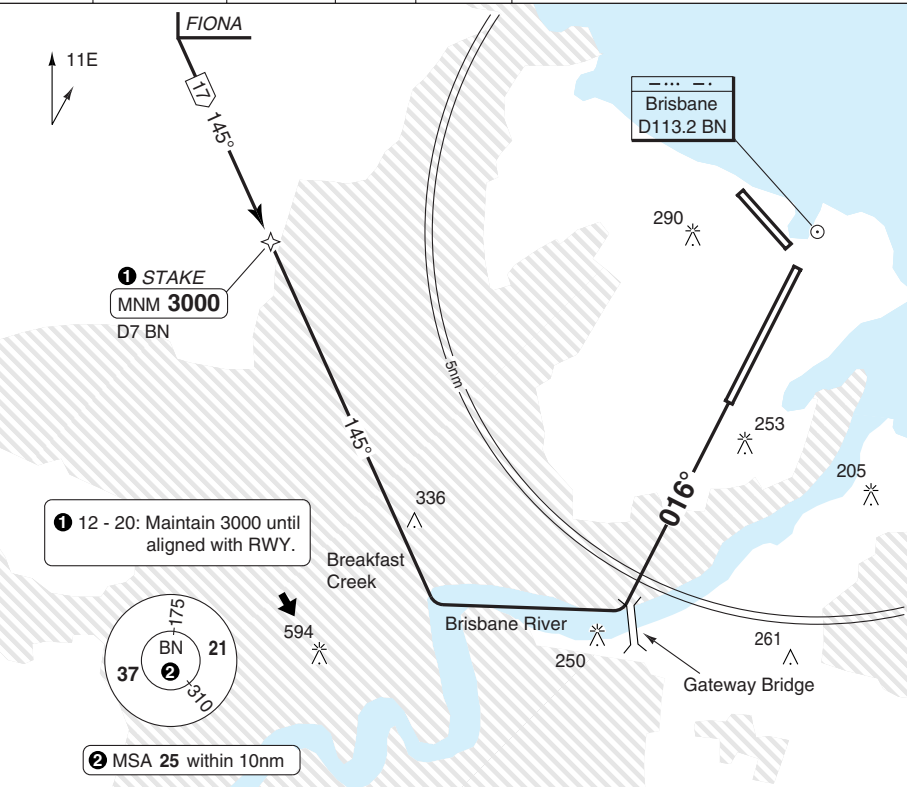
Change: New spec.

THIS CHART IS A PART OF NAVIGRAPH NDAC AND IS INTENDED FOR FLIGHT SIMULATION USE ONLY

VISUAL RWY 01 RIVER TRACK

PANS OPS Aeronautical Data © Australian Airservices

Brisbane APP 124.7 NW 125.6 SE	RAD 125.7	TWR 120.5	GND 121.7	ATIS 113.2 125.5
FAT 016°	DTHR Elev 12	AD Elev 13	TL ATC	TA 10000



50 - 11

© Navtech - ybbn11aip00

LDA 3500x45
11482x147ft
T 3° (50)



Reverse side blank

Change: New spec.

THIS CHART IS A PART OF NAVIGRAPH NDAC AND IS INTENDED FOR FLIGHT SIMULATION USE ONLY

JAR-OPS Landing Minima

The following Minima is for Public Transport aircraft and conforms to JAR-OPS1 regulations.

STRAIGHT-IN APPROACH		C				D			
R/W	Procedure	DA/ MDA QNH ft	DH/ MDH QFE ft	Vis m	Vis No ALS m	DA/ MDA QNH ft	DH/ MDH QFE ft	Vis m	Vis No ALS m
01	ILS (2)(3)	220	210	800	1500	220	210	800	1500
01	LOC/DME (1)	560	550	2000	2900	560	550	2000	2900
01	VOR/DME (1)	570	560	3200	4100	570	560	3200	4100
01	RNAV Z (GNSS)(1)	560	550	3100	4000	560	550	3100	4000
14	VOR/DME (1)	600	590	3200	N/A	600	590	3200	N/A
14	RNAV (GNSS)(1)	430	420	2300	N/A	430	420	2300	N/A
19	ILS/DME Y, Z (2)(3)	220	210	800	1500	220	210	800	1500
19	LOC/DME Y, Z (1)	410	400	1300	2200	410	400	1400	2200
19	VOR/DME (1)	410	400	2200	3100	410	400	2200	3100
19	RNAV Z (GNSS)(1)	430	420	2300	3200	430	420	2300	3200
32	RNAV (GNSS)(1)	490	480	2700	N/A	490	480	2700	N/A

Notes:

- (1) Procedure based on aerodrome elevation.
- (2) Vis increased to 1200m when REDL inop.
- (3) Includes Cat DL aircraft.

CIRCLING		C			D		
R/W	Procedure	MDA QNH ft	MDH QFE ft	Vis m	MDA QNH ft	MDH QFE ft	Vis m
All procedures		750	740	4000	850	840	5000

Notes:

TAKE-OFF		C		D	
Runway	Facilities	RVR	Vis	RVR	Vis
01/19	REDL + (RCLL or RCL)	-	500	-	500
14/32	REDL + RCL	-	500	-	500
All	Nil (Day only)	-	800	-	800

Notes:

ALTERNATE MINIMA

Cat A, B (Ceil/Vis): 1137ft/4.4km; Cat C 1237ft/6.0km; Cat D 1337ft/7.0km.

SPECIAL ALTERNATE MINIMA

ILS only: All categories (Ceil/Vis) 700ft/2.5km.

JAR-OPS Landing Minima

The following Minima is for Public Transport aircraft and conforms to JAR-OPS1 regulations.

STRAIGHT-IN APPROACH		A				B			
R/W	Procedure	DA/ MDA QNH	DH/ MDH QFE	Vis m	Vis No ALS m	DA/ MDA QNH	DH/ MDH QFE	Vis m	Vis No ALS m
01	ILS (2)(3)	220	210	800	1500	220	210	800	1500
01	LOC/DME (1)	560	550	2000	2900	560	550	2000	2900
01	VOR/DME (1)	570	560	3200	4100	570	560	3200	4100
01	RNAV Z (GNSS)(1)	560	550	3100	4000	560	550	3100	4000
14	VOR/DME (1)	600	590	3200	N/A	600	590	3200	N/A
14	RNAV (GNSS)(1)	430	420	2300	N/A	430	420	2300	N/A
19	ILS/DME Y, Z (2)(3)	220	210	800	1500	220	210	800	1500
19	LOC/DME Y, Z (1)	410	400	1300	2200	410	400	1300	2200
19	VOR/DME (1)	410	400	2200	3100	410	400	2200	3100
19	RNAV Z (GNSS)(1)	430	420	2300	3200	430	420	2300	3200
32	RNAV (GNSS)(1)	490	480	2700	N/A	490	480	2700	N/A

Notes:

- (1) Procedure based on aerodrome elevation.
- (2) Vis increased to 1200m when REDL inop.
- (3) Includes Cat DL aircraft.

CIRCLING		A			B		
R/W	Procedure	MDA QNH ft	MDH QFE ft	Vis m	MDA QNH ft	MDH QFE ft	Vis m
All procedures		650	640	2400	650	640	2400

Notes:

TAKE-OFF		A		B	
Runway	Facilities	RVR	Vis	RVR	Vis
01/19	REDL + (RCLL or RCL)	-	500	-	500
14/32	REDL + RCL	-	500	-	500
All	Nil (Day only)	-	800	-	800

Notes:

ALTERNATE MINIMA

Cat A, B (Ceil/Vis): 1137ft/4.4km; Cat C 1237ft/6.0km; Cat D 1337ft/7.0km.

SPECIAL ALTERNATE MINIMA

ILS only: All categories (Ceil/Vis) 700ft/2.5km.