

Airport information:

Country: Singapore

City: PAYA LEBAR

Coordinates: N 01° 21.3', E103 54.2

Elevation: 65

Customs: Customs: By prior arrangement

Fuel: Jet A1

RFF: CAT 9

hours: SUN-FRI 2300-1100, SAT 2300-0500 + O/R 30 MIN.

Runways:

Runway 02

Takeoff length: 3780, Landing length: 3780

Runway 20

Takeoff length: 3780, Landing length: 3780

Aerodrome Briefing Card

Paya Lebar **SINGAPORE**

5 - 1

1. GEOGRAPHICAL DATA

- 1.1 Paya Lebar airport is designated as alternate AD to Singapore Changi airport and is a joint civil/military AD operated by RSAF. The AD is located to the ENE of the Singapore city centre and borders S and SW to built-up area with several lighted and unlighted OBST, as tall buildings with heights up to 920ft.
- 1.2 The adjacent AD, Seletar and Sembawang to NW and Singapore Changi to the E, all within 10nm to be noted.

2. WEATHER

- 2.1 Tropical rainy climate with no winter. Average of 400 thunderstorms a year, mostly when winds are light and most active in the afternoon.
- “Sumatras” are early morning squalls occurring in APR-NOV (3-4 per month). Thunderstorms from NW-S during night, morning with strong wind gusts, reduced visibility in torrential rains and lower cloudbase to 200-300ft.
- 2.2 Monsoons.
- NE monsoon, late NOV-MAR with N-NE winds and at the beginning frequent spells of rain. “Rainy season” in NOV-DEC.
- SW monsoon, end of MAY-SEP.
Winds S-SE, sometimes W. During AUG and SEP sometimes hazy up to 5000ft.

3. TRAFFIC

Open.

4. MISCELLANEOUS

Open.

5. REPORTS

Open.

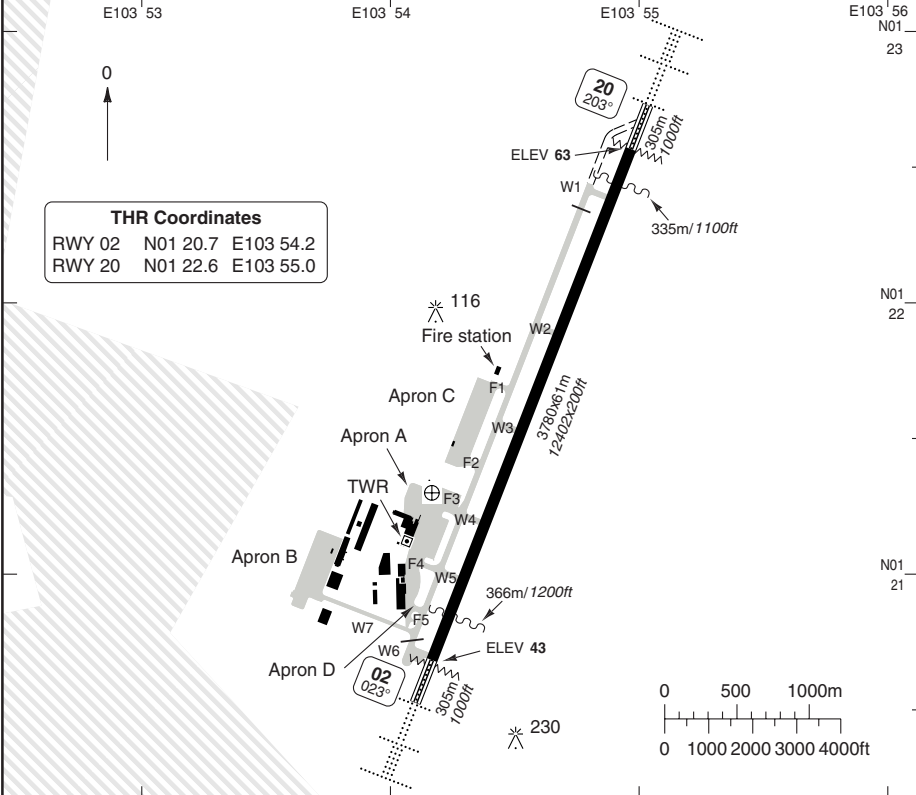
AERODROME

Paya Lebar SINGAPORE

10 - 1

Paya Lebar GND 121.7	TWR 118.05 121.7	Singapore CTL 123.7 133.25 134.4 127.3 135.8 128.1	② 23 - 05 FRI - SAT. Closed SUNDAY and Public Holidays. Will be open at 30 min notice.
-------------------------	------------------------	--	--

AD Elev 65	ARP: N01 21.3 E103 54.2	RFF: CAT 9	AD HR: 23 - 11 SUN - FRI ②
------------	-------------------------	------------	----------------------------



RWY	Slope	TORA m/ft	LDA m/ft	ALS	REDL	Additional
02	+0.2	3780 / 12402	3780 / 12402	H-C	H ①	P 3° L/R, EFAS
20	-0.2	3780 / 12402	3780 / 12402	H-C	H ①	P 3° L/R, EFAS

① Last 610m amber.

EU OPS TAKE OFF MINIMA

RWY	Facilities	RVR			
		A	B	C	D
02/20	RCL (day only) or RCL + REDL	400m			
	NIL (day only)	500m			

© Navitech - wsap01iaorg0

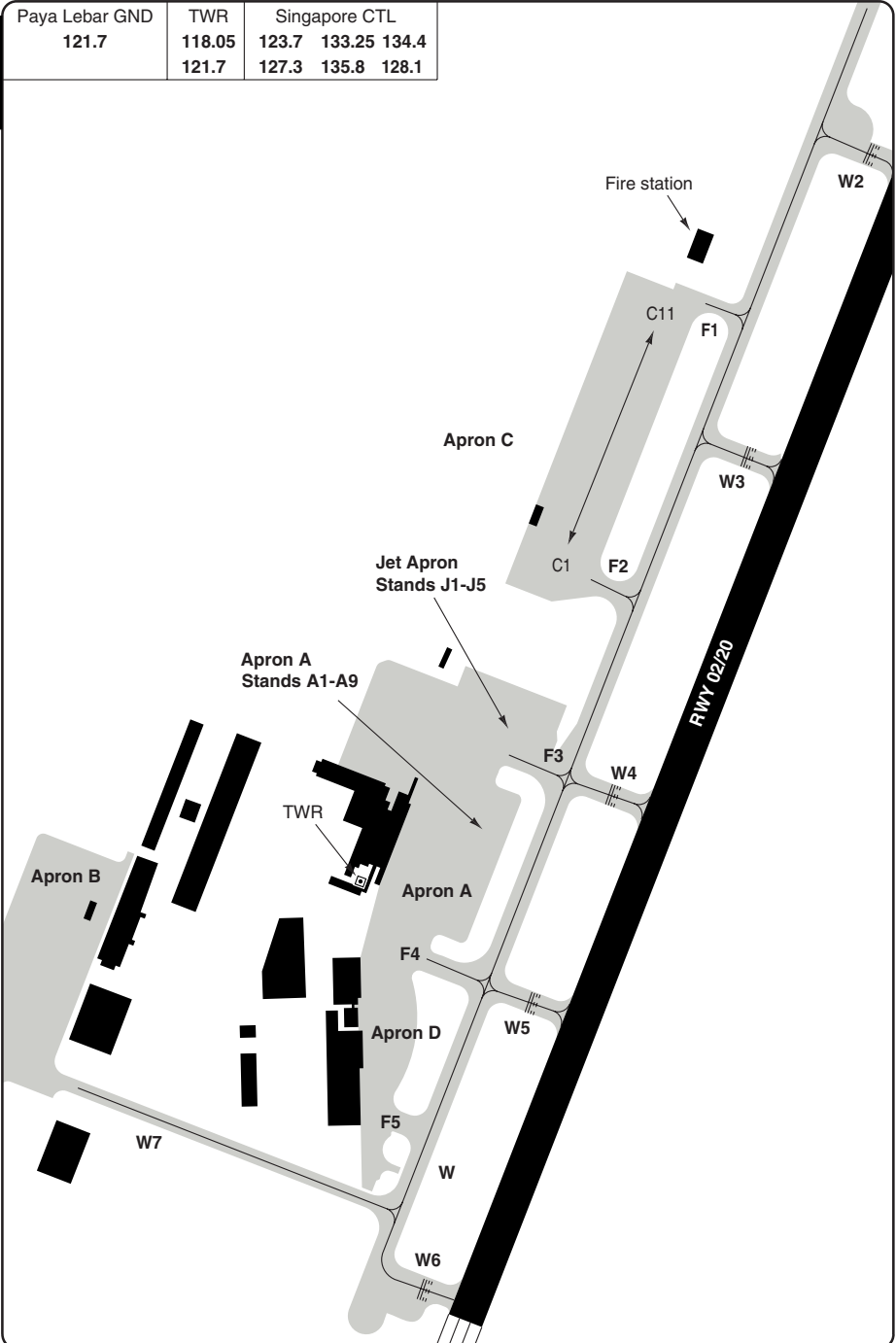
Change: New spec.

THIS CHART IS A PART OF NAVIGRAPH NDAC AND IS INTENDED FOR FLIGHT SIMULATION USE ONLY

AERODROME

10 - 2

Paya Lebar GND 121.7	TWR	Singapore CTL		
	118.05	123.7	133.25	134.4
	121.7	127.3	135.8	128.1



© Navitech - wsap02laorg0

Change: New spec.

THIS CHART IS A PART OF NAVIGRAPH NDAC AND IS INTENDED FOR FLIGHT SIMULATION USE ONLY

GENERAL

Paya Lebar SINGAPORE

GENERAL

- 1. WARNING**
 - 1.1 Bird hazard.
 - 1.2 Maritime vessels of variable heights in water north and south of RWY.
 - 1.3 Intensive fixed wing flying operation west of rwy.
- 2. PREFERENTIAL RWY SYSTEM**
TKOF: RWY 02
LDG: RWY 20
- 3. TRAFFIC NOTE**
Do not mistake Paya Lebar with Changi AD and Seletar AD.
- 4. TWY RESTRICTIONS**
TWY BTN TWY W1 and TWY W2 closed to all CAT C and above ACFT.
- 5. TAXI**
 - 5.1 No taxiing is allowed within Apron B and TWY W7. ACFT will be towed in/out of apron B to an assigned ACFT stand via TWY W7.
 - 5.2 Exercise caution when operating in the Apron areas due to close proximity of obstacles.

ARRIVAL

- 1. SPEED**
MAX 250kt at or below 10000ft, or within 40nm from Singapore Changi AD.
- 2. ARR**
IMC: Expect radar vector to RWY 20 for ILS or VOR APCH.
VMC: Expect radar vector to RWY 20 for a visual straight-in APCH.
- 3. PARKING**
Expect parking on Apron C.
- 4. TAXI ROUTE RWY 20 ARRIVALS**
 - 4.1 To Apron A via TWY F4 for stands A4, A5. Via Twy F3 for stands A1-A3 and A6-A9.
 - 4.2 To Apron C via TWY F1 or F2.
 - 4.3 To Jet Apron via TWY F3.

DEPARTURE

- 1. SID RWY 02**
N1: Climb on RWY HDG to **3000**. At PU turn left HDG 010°. Contact APP 119.9.
N2: Climb on RWY HDG to **3000**. At PU maintain HDG 020°. Contact APP 119.9.
N3: Climb on RWY HDG to **3000**. At PU turn left HDG 360°. Contact APP 119.9.
- 2. GROUND PROCEDURES**
 - 2.1 Engine Start Ups and Ground Runs: Clearance from the ground controller must be obtained for all engine start ups or any associated activities within the apron areas.
In addition, all engine ground runs, regardless of intensity, must be co-ordinated with ATC for approval.
However ground runs exceeding 85% if the engine power are prohibited within the apron areas.
 - 2.1 ACFT to/from Apron B: Engine start ups and shut downs at TWY W7 are strictly prohibited.
ACFT departing or arriving to/from apron B shall be allocated to the appropriate ACFT stands for their start ups or shut downs and shall be towed in/out of the allocated ACFT stands.
In addition, wing walkers are to be provided for large ACFT on tow at TWY W7 due to construction works located next to TWY W7.

3. TAXI ROUTES RWY 02 DEPARTURES

- 3.1 From Apron A via TWY F4
- 3.2 From Apron C via TWY F1
- 3.3 From Jet Apron via TWY F3

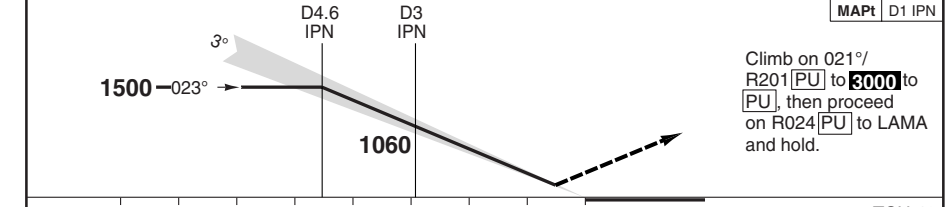
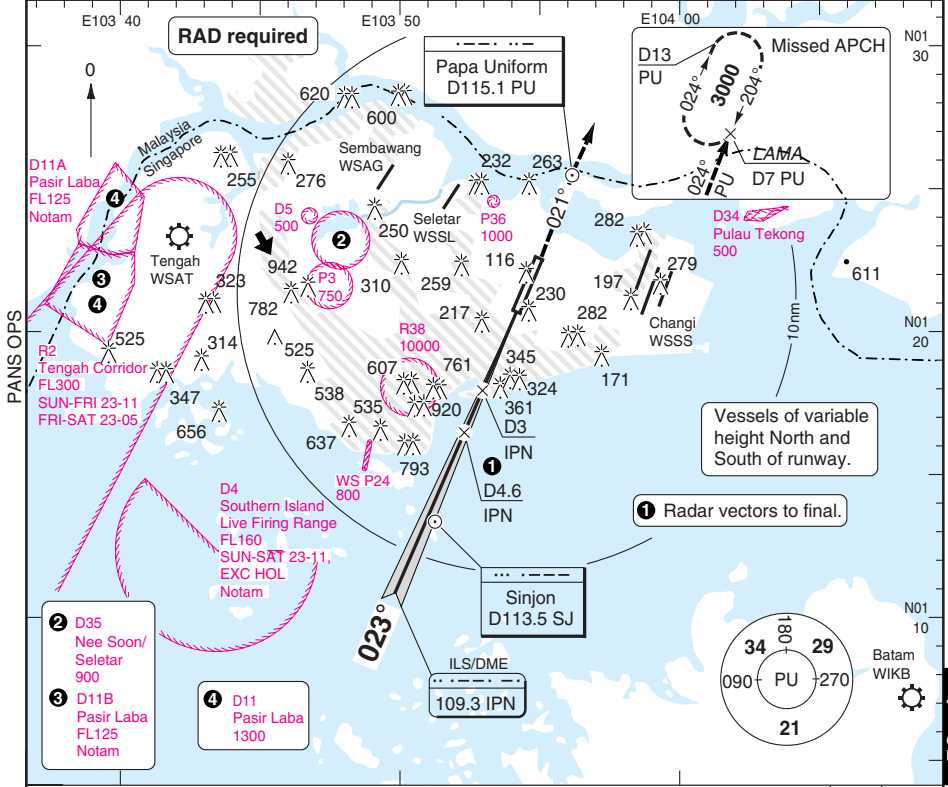
10 - 3

ILS RWY 02

Paya Lebar SINGAPORE

Singapore CTL	APP	Paya Lebar APP	Paya Lebar TWR	GND
123.7 133.25 134.4	120.3	119.9	118.05	121.7
127.3 135.8 128.1			121.7	

ILS/DME 109.3 IPN	FAT 023°	THR Elev 43	AD Elev 65	TL 130	TA 11000
-------------------	----------	-------------	------------	--------	----------



		Note: Circling NA					DME 3.2° ALT		LDA 3780x61 12402x200ft P 3° L/R	
ACFT	ILS+DME	LOC+DME						DME	3.2° ALT	
A								4.3	1500	
B	250 (200)	470 (427)						4	1400	
C	550m	1300m						3	1060	
D								2	720	
GS	80	100	120	140	160					
ROD 3.2°	460	570	680	800	910					
FAF-MAPt	2:42	2:10	1:48	1:32	1:21					

© Navitech - wsap011aip00

EU OPS

Change: New spec.

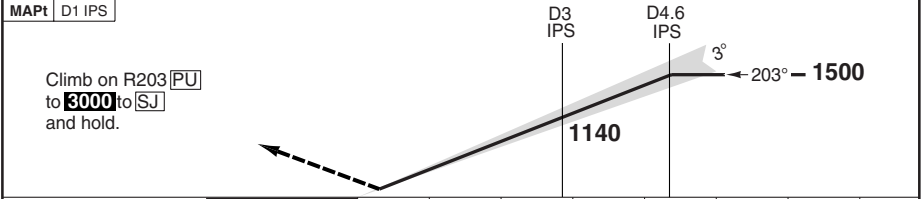
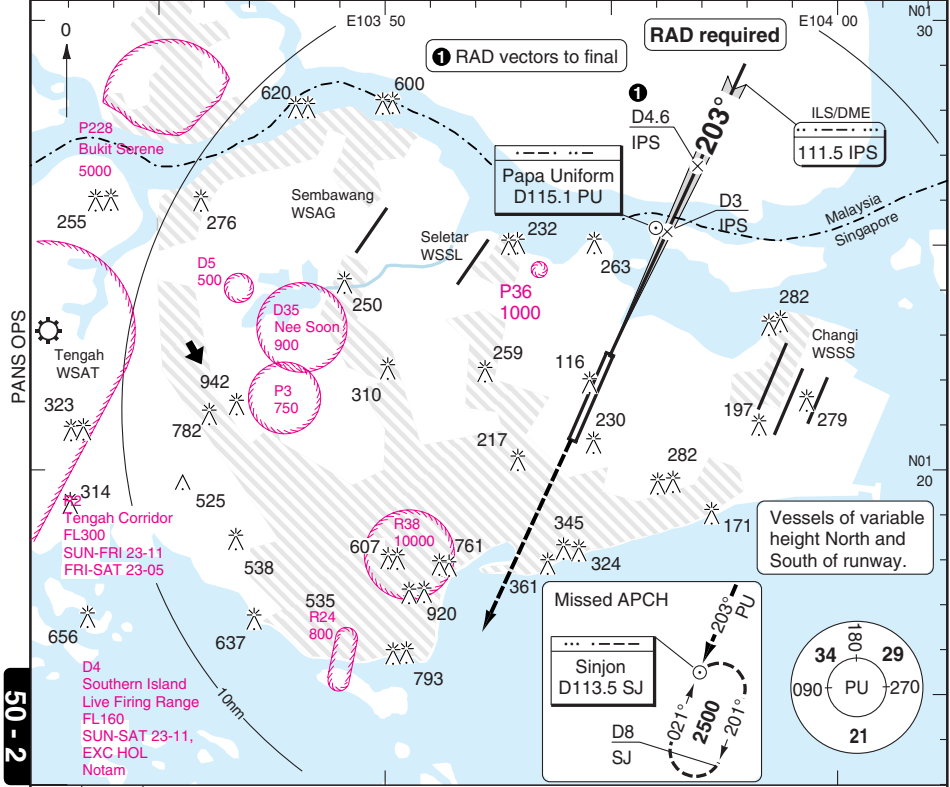
THIS CHART IS A PART OF NAVIGRAPH NDAC AND IS INTENDED FOR FLIGHT SIMULATION USE ONLY

ILS RWY 20

Paya Lebar SINGAPORE

Singapore CTL	APP	Paya Lebar APP	Paya Lebar TWR	GND
123.7 133.25 134.4	120.3	119.9	118.05	121.7
127.3 135.8 128.1			121.7	

ILS/DME 111.5 IPS	FAT 203°	THR Elev 63	AD Elev 65	TL 130	TA 11000
-------------------	----------	-------------	------------	--------	----------



TCH 55	0 1 2 3 4 5 6 7 nm							
ACFT	ILS+DME	LOC+DME	Note: Circling NA			DME IPS	3.4° ALT	LDA 3780x61 12402x200ft P 3° L/R
A						4	1500	
B	270 (200)	480 (411)				3	1140	
C	550m	1200m				2	780	
D						1.2	480	
GS	80	100	120	140	160			
ROD 3.4°	490	610	730	850	970			
FAF-MAPt	2:42	2:10	1:48	1:32	1:21			

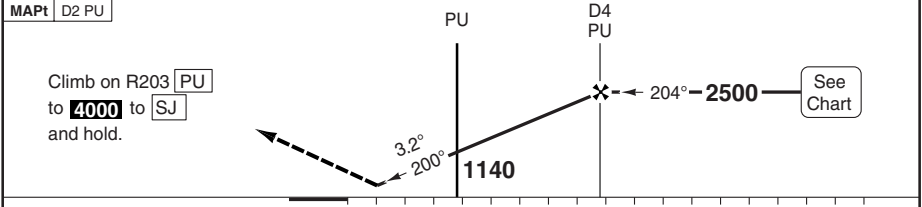
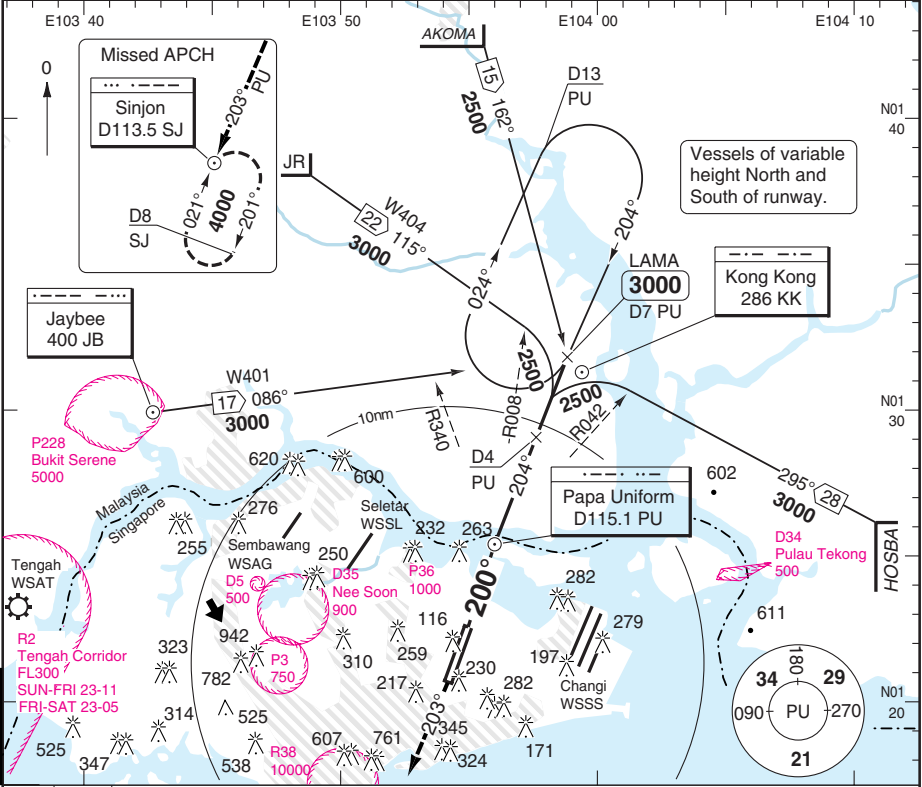
© Navitech - wsap02iap00

VOR RWY 20

Paya Lebar SINGAPORE

Singapore CTL	APP	Paya Lebar APP	Paya Lebar TWR	GND
123.7 133.25 134.4	120.3	119.9	118.05	121.7
127.3 135.8 128.1			121.7	

VOR/DME	115.1 PU	FAT	200°	THR Elev	63	AD Elev	65	TL	130	TA	11000
---------	----------	-----	------	----------	----	---------	----	----	-----	----	-------



ACFT	VOR+DME
A	730 (665) 1500m
B	
C	730 (665) 2400m
D	

Note: Circling NA

DME	3.2°	LDA 3780x61
PU	ALT	12402x200ft
5.5	3000	P 3° L/R
4	2510	
3	2170	
2	1830	
1	1490	
0	1140	
1	800	
1.2	730	

GS	80	100	120	140	160
ROD 3.2°	460	570	690	800	920
FAF-MAPT	4:30	3:35	3:00	2:34	2:15

© Navitech - wsap04iap00

Change: New spec.

THIS CHART IS A PART OF NAVIGRAPH NDAC AND IS INTENDED FOR FLIGHT SIMULATION USE ONLY