

Airport information:

Country: Viet Nam

City: HA NOI

Coordinates: N 21° 13.3', E105 48.3

Elevation: 40

Customs: : H24

Fuel: Jet A1

RFF: CAT 8

hours: H24.

Runways:

Runway 11L

Takeoff length: 3200, Landing length: 3200

Runway 11R

Takeoff length: 3800, Landing length: 3800

Runway 29L

Takeoff length: 3800, Landing length: 3800

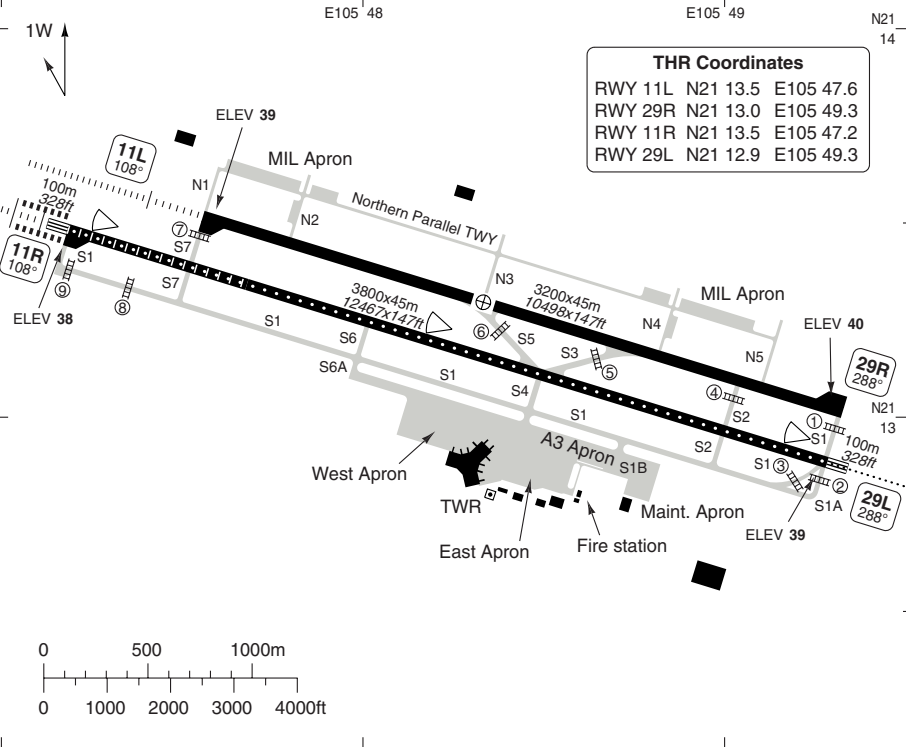
Runway 29R

Takeoff length: 3200, Landing length: 3200

AERODROME

Noi Bai GND 121.9	TWR 118.4 118.9	ATIS 127.0
-----------------------------	-------------------------------------	----------------------

AD Elev 40	ARP: N21 13.3 E105 48.3	RRF: CAT 9	AD HR: H24
-------------------	-------------------------	------------	------------



RWY	Slope	TORA m/ft	LDA m/ft	ALS	REDL	RCLL	Additional
11L	0	3200 / 10498	3200 / 10498	H-D	H ②	-	P 3°
29R	0	3200 / 10498	3200 / 10498	-	H ②	-	-
11R	0	3800 / 12467	3800 / 12467	H-B	H	15m	P 3°/L/R
29L	0	3800 / 12467	3800 / 12467	H-E ①	H	15m	P 3°

① 420m. ② White.

STATE TAKE OFF MINIMA

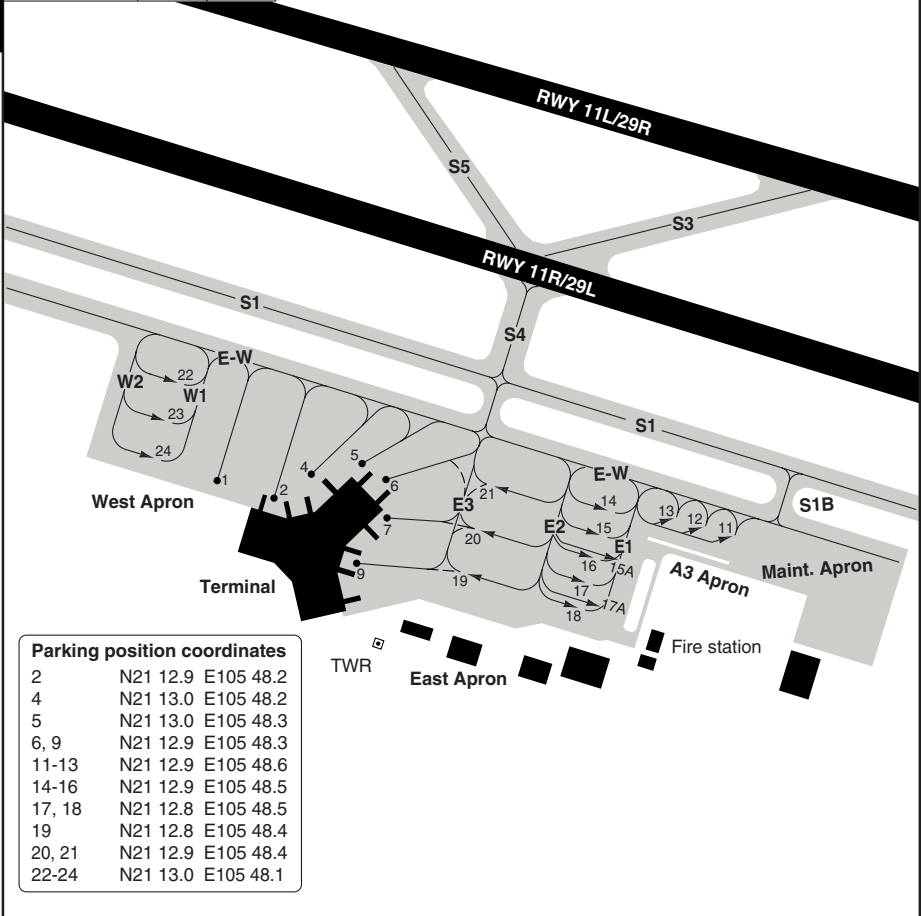
RWY	Facilities	CEL/VIS		
		B	C	D
11L/29R a	-	0/0.4 km	0/0.5 km	0/0.6 km
RVR				
11R/29L a	-	300m	400m	500m

a Without TKOF ALT AD: AVBL LDG MIN

AERODROME Parking

10 - 2

Noi Bai GND 121.9	TWR 118.4 118.9	ATIS 127.0
----------------------	-----------------------	---------------



Parking position coordinates		
2	N21 12.9	E105 48.2
4	N21 13.0	E105 48.2
5	N21 13.0	E105 48.3
6, 9	N21 12.9	E105 48.3
11-13	N21 12.9	E105 48.6
14-16	N21 12.9	E105 48.5
17, 18	N21 12.8	E105 48.5
19	N21 12.8	E105 48.4
20, 21	N21 12.9	E105 48.4
22-24	N21 13.0	E105 48.1

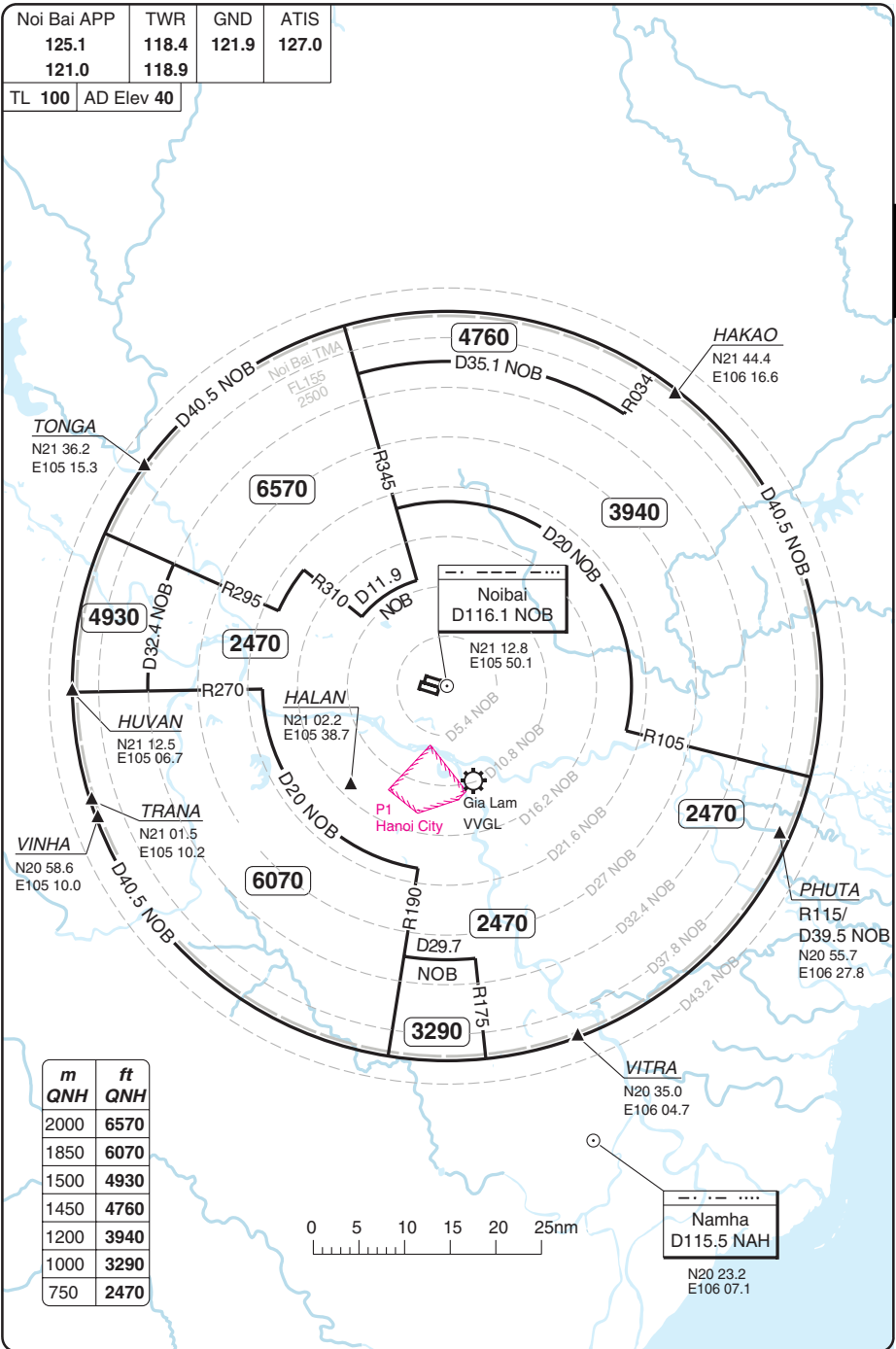
GENERAL INFORMATION

1. **WARNING**
 Bird hazard. Pilots are requested to report flocks near APCH and APCH areas, via radio to ATC.
2. **TAXIING**
 - 2.1 The backtrack areas have been established at the start of RWY 11L/29R with dimension space as follows:
 - RWY 11L: width 93m/305ft, length 60m/196ft.
 - RWY 29R: width 81m/265ft, length 66m/216ft.
 Aircraft making backtrack turn at the start of RWY 11L/29R have to follow yellow guide lines.
 - 2.2 Follow me car on request.
 - 2.3 Contact TWR to obtain ATC clearance before taxiing.
 - 2.4 To avoid jet blast damage to Military acft behind twy hold line for RWY 11L, all ACFT must turn at specified point.

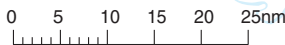
© Navtech - vvnb02laorg0

RADAR Minimum Altitudes

Noi Bai APP	TWR	GND	ATIS
125.1	118.4	121.9	127.0
121.0	118.9		
TL 100	AD Elev 40		



m	ft
QNH	QNH
2000	6570
1850	6070
1500	4930
1450	4760
1200	3940
1000	3290
750	2470



SID RWY 11L/R East

Noi Bai GND 121.9	TWR 118.4 118.9	APP 125.1 121.0	ATIS 127.0
----------------------	-----------------------	-----------------------	---------------

TA 9030 AD Elev 40

HAKAO
D40 NOB
N21 44.4
E106 16.6

To NAKHA

R9
UNL
By ATC

HAKA A
HAKAO 1A
0-39°

m	ft
QNH	QNH
2750	9030
2150	7060
1300	4270

MNM 7060

Noibai
D116.1 NOB
N21 12.8
E105 50.1

① Only to be used in case VVNB and VVCI are alternate aerodromes for each other.

D4
NOB

MNM 4270
D7 NOB

D8
NOB

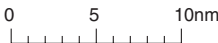
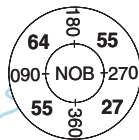
R8
UNL
By ATC

CATIA
CATBI 1A
-115°

PHUTA
D39.5 NOB
N20 55.7
E106 27.8

VITRA
VITRA 1A
-170°

Catbi D115.1 CAB



VITRA
D40 NOB
N20 35.0
E106 04.7

To Namha D115.5 NAH

© Navitech - vvnb01daorg0

SID	Routeing	Altitudes
CATBI 1A ①	Climb on 108° to D7 NOB - turn right - intcp R115 NOB - PHUTA.	D7 NOB MNM 4270
HAKAO 1A	Climb on 108° to D4 NOB - turn right within D8 NOB - intcp R039 NOB - to NOB - HAKAO.	NOB MNM 7060
VITRA 1A	Climb on 108° to D7 NOB - turn right - intcp 170°/R350 NAH - VITRA.	D7 NOB MNM 4270

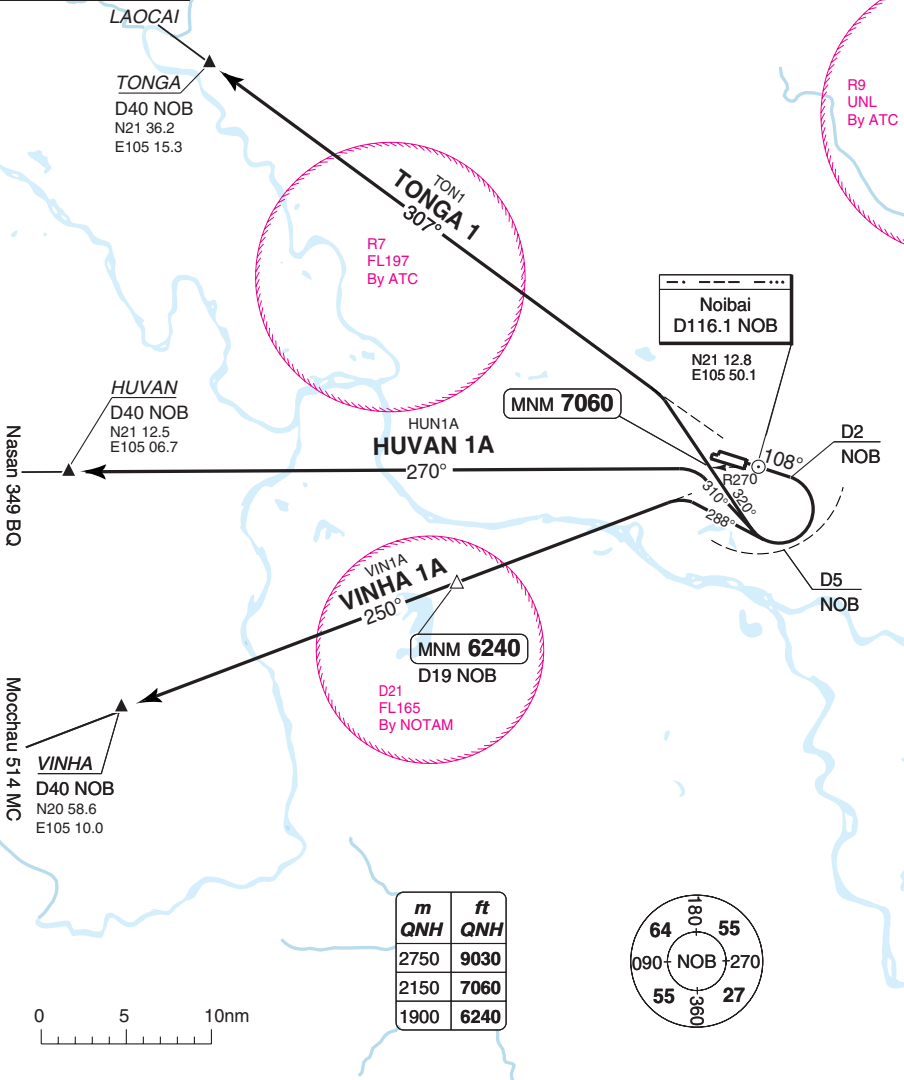
Change: New print.

THIS CHART IS A PART OF NAVIGRAPH NDAC AND IS INTENDED FOR FLIGHT SIMULATION USE ONLY

SID RWY 11L/R West

Noi Bai GND 121.9	TWR 118.4 118.9	APP 125.1 121.0	ATIS 127.0
-----------------------------	-------------------------------------	-------------------------------------	----------------------

TA 9030 AD Elev 40



30 - 2

© Navitech - vvnbd202daorg0

SID	Routeing	Altitudes
HUVAN 1A	Climb on 108° to D2 NOB - turn right within D5 NOB to 310° - intcp R270 NOB - HUVAN.	
TONGA 1	Climb on 108° to D2 NOB - turn right within D5 NOB to 320° - intcp R307 NOB - TONGA.	R270 NOB MNM 7060
VINHA 1A	Climb on 108° to D2 NOB - turn right within D5 NOB to 288° - intcp R250 NOB - VINHA.	D19 NOB MNM 6240

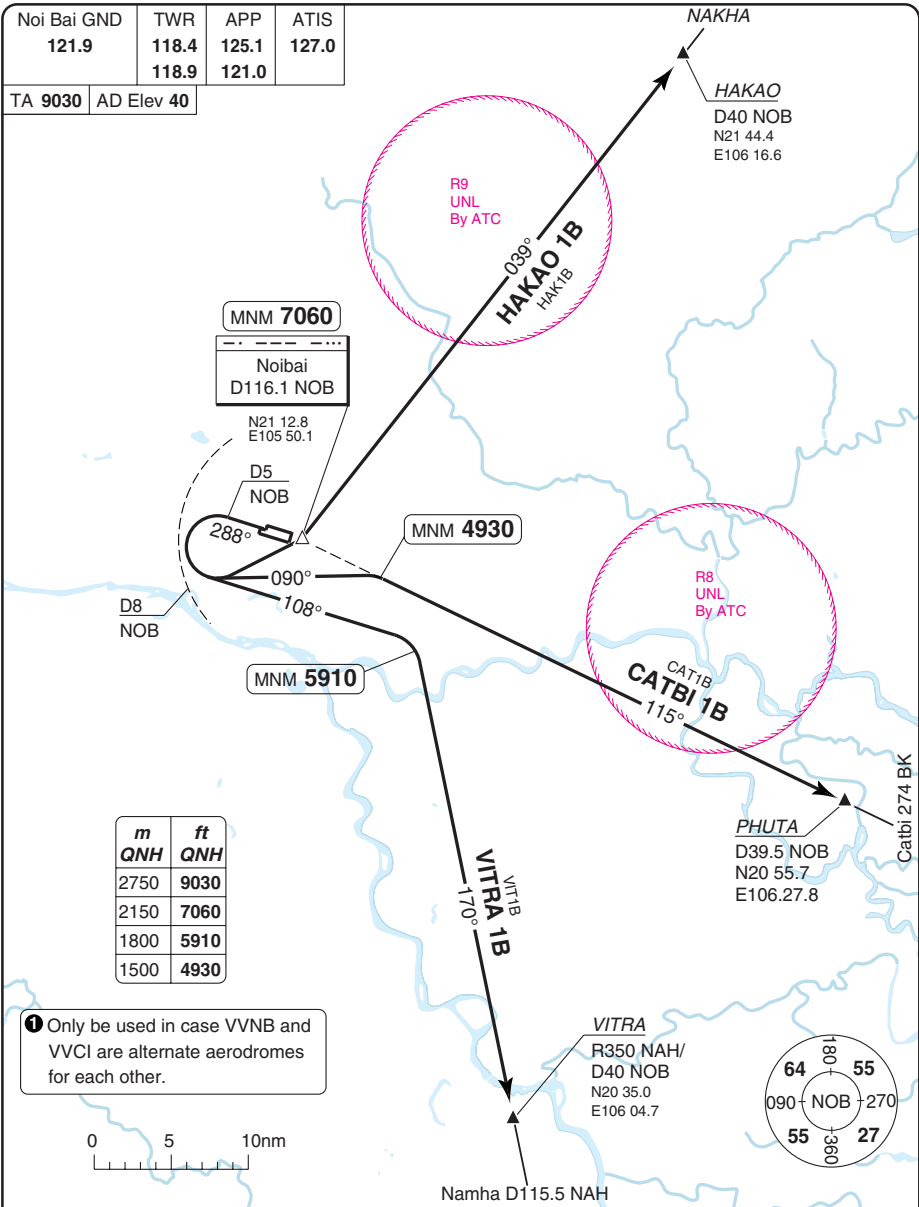
Change: New print.

THIS CHART IS A PART OF NAVIGRAPH NDAC AND IS INTENDED FOR FLIGHT SIMULATION USE ONLY

SID RWY 29L/R East

Noi Bai GND 121.9	TWR 118.4 118.9	APP 125.1 121.0	ATIS 127.0
----------------------	-----------------------	-----------------------	---------------

TA 9030 AD Elev 40



m	ft
2750	9030
2150	7060
1800	5910
1500	4930

① Only be used in case VVNB and VVCI are alternate aerodromes for each other.



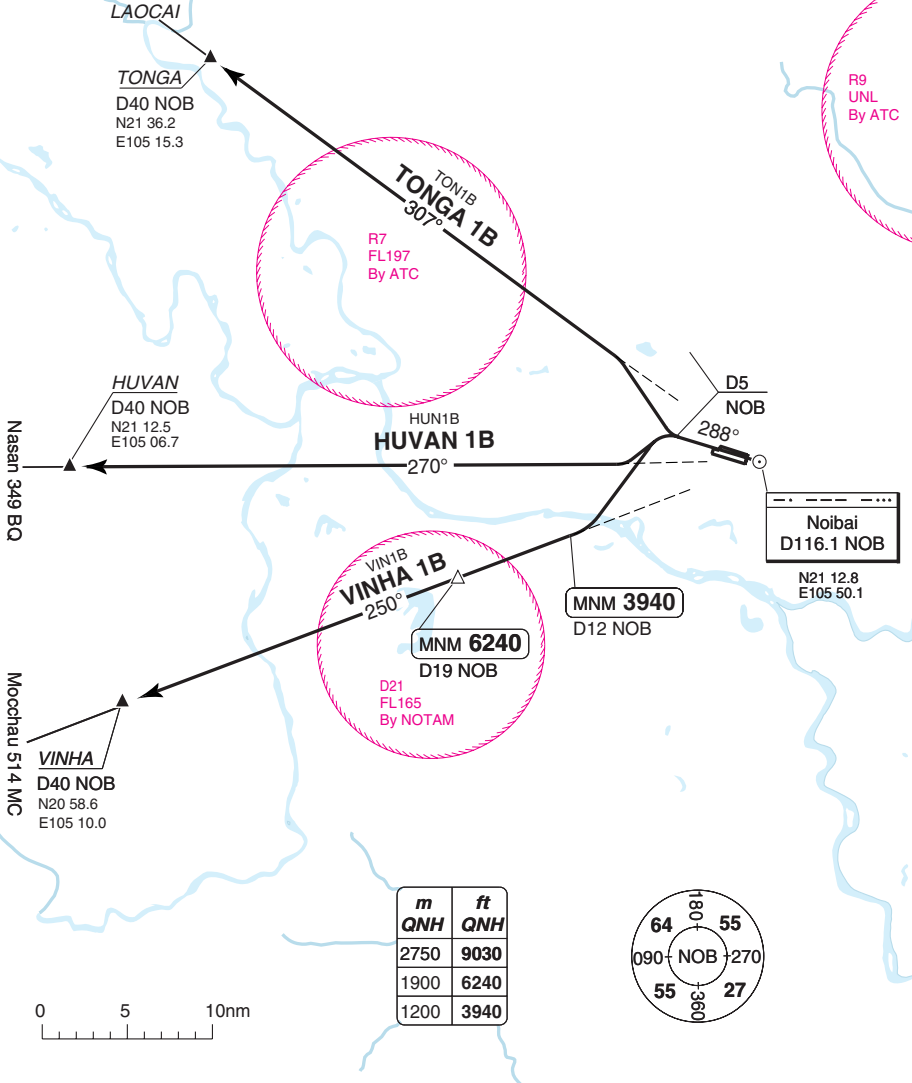
SID	Routeing	Altitudes
CATBI 1B ①	Climb on 288° to D5 NOB - turn left within D8 NOB to 090° - R115 NOB - PHUTA.	R115 NOB MNM 4930
HAKAO 1B	Climb on 288° to D5 NOB - turn left within D8 NOB to NOB - HAKAO.	NOB MNM 7060
VITRA 1B	Climb on 288° to D5 NOB - turn left within D8 NOB to 108° - 170°/R350 NAH - VITRA.	R350 NAH MNM 5910

Change: New print.

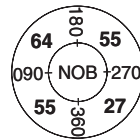
SID RWY 29L/R West

Noi Bai GND 121.9	TWR 118.4 118.9	APP 125.1 121.0	ATIS 127.0
-----------------------------	-------------------------------------	-------------------------------------	----------------------

TA 9030 AD Elev 40



m	ft
QNH	QNH
2750	9030
1900	6240
1200	3940



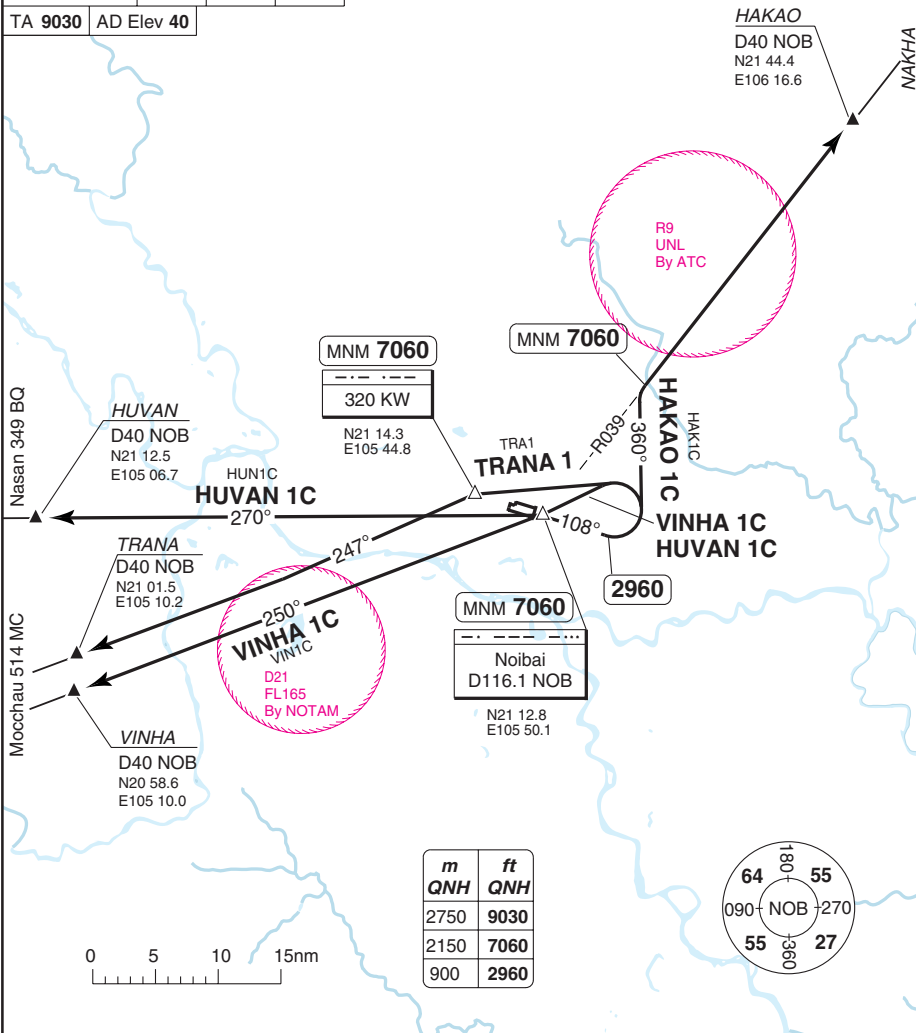
SID	Routeing	Altitudes
HUVAN 1B	Climb on 288° to D5 NOB - turn left - R270 NOB - HUVAN.	
TONGA 1B	Climb on 288° to D5 NOB - turn right - R307 NOB - TONGA.	
VINHA 1B	Climb on 288° to D5 NOB - turn left - R250 NOB - VINHA.	D12 NOB MNM 3940 D19 NOB MNM 6240

Change: New print.

SID RWY 11L/R BY ATC ONLY

Noi Bai GND 121.9	TWR 118.4 118.9	APP 125.1 121.0	ATIS 127.0
----------------------	-----------------------	-----------------------	---------------

TA 9030 AD Elev 40



30 - 5

CAUTION: These procedures are restricted to use by ATC.

SID	Routeing	Altitudes
HAKAO 1C	Climb on 108° - 2960 turn left to 360° - R039 NOB MNM 7060.	R039 NOB MNM 7060
HUVAN 1C	Climb on 108° - 2960 turn left to NOB - HUVAN.	NOB MNM 7060
TRANA 1	Climb on 108° - 2960 turn left to KW - TRANA.	KW MNM 7060
VINHA 1C	Climb on 108° - 2960 turn left to NOB - VINHA.	NOB MNM 7060

© Navitech - vvn05daorg0

Change: New print.

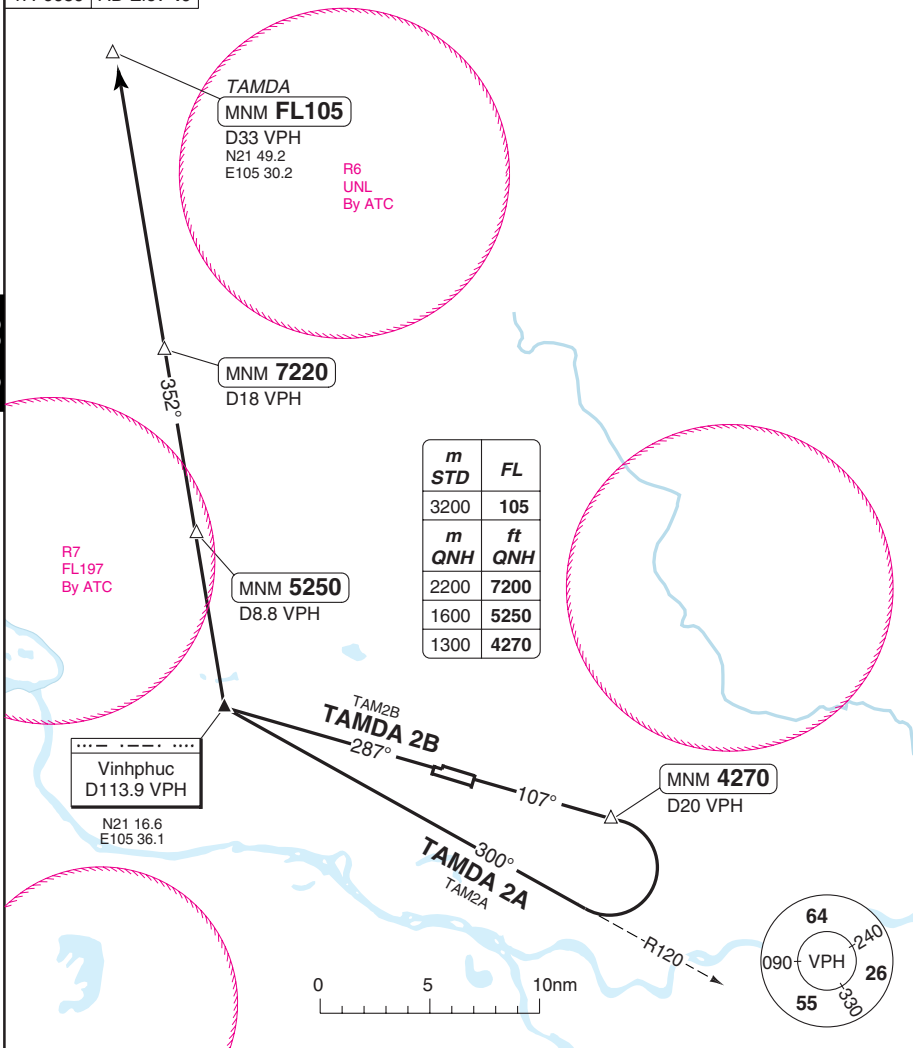
THIS CHART IS A PART OF NAVIGRAPH NDAC AND IS INTENDED FOR FLIGHT SIMULATION USE ONLY

SID RWY 11L/R, 29L/R

Noi Bai GND 121.9	TWR 118.4 118.9	APP 125.1 121.0	ATIS 127.0
----------------------	-----------------------	-----------------------	---------------

TA 9030 | AD Elev 40

30 - 6



CAUTION: ATS route W22 can only be used when having ATC approval.

SID	RWY	Routeing	Altitudes
TAMDA 2A	11L/R	After DEP - intcp R107 - at D20 VPH - turn right - intcp 300°/R120 VPH - VPH - turn right - intcp R352 - TAMDA.	D20 VPH MNM 4270 D8.8 VPH MNM 5250 D18 VPH MNM 7220 TAMDA MNM FL105
TAMDA 2B	29L/R	After DEP - intcp R107 VPH - VPH - at VPH - turn right - intcp R352 - TAMDA.	D8.8 VPH MNM 5250 D18 VPH MNM 7220 TAMDA MNM FL105

© Navitech - vvnb06daorgo

Change: New.

STAR RWY 11L/R VOR VPH

Noi Bai APP	TWR	GND	ATIS
125.1	118.4	121.9	127.0
121.0	118.9		

TL 100 AD Elev 40

TAMDA
MINM FL105
 R352/D33 VPH
 N21 49.2
 E105 30.2

Caution
 ATS route W22 can be only used
 when having ATC approval.

MINM 7220
 D18 VPH

MEO 2A
MEOVA 2A
 172°

MINM 5250
 D8.8 VPH

m	FL
3200	105
m	ft
2200	7220
1600	5250
900	2960

R7
 FL197
 By ATC

Vinhphuc
 D113.9 VPH
 N21 16.6
 E105 36.1

MINM 2960
 106° →
 ← 286°



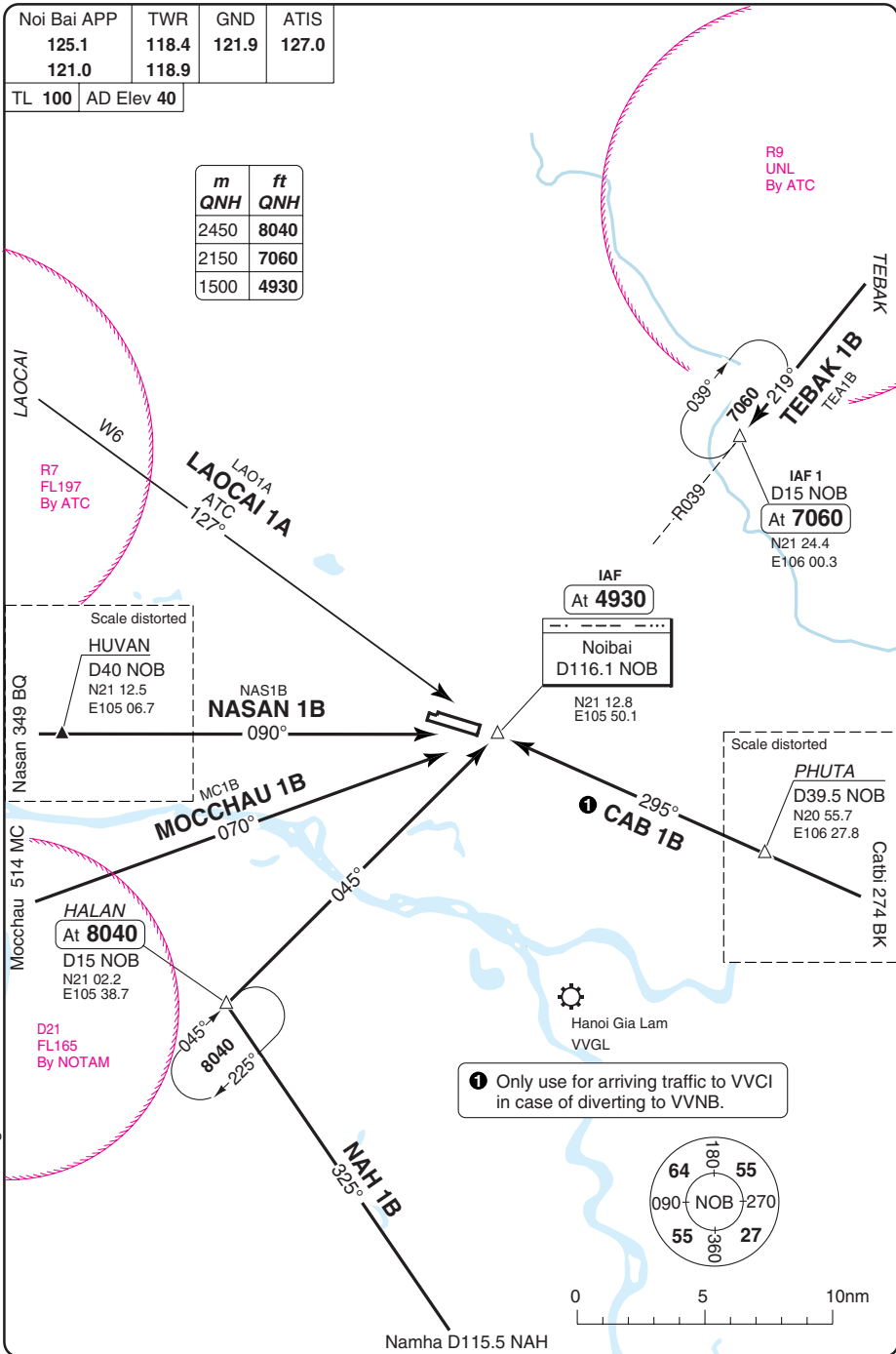
0 5 10nm

STAR RWY 29L/R

Noi Bai APP	TWR	GND	ATIS
125.1	118.4	121.9	127.0
121.0	118.9		

TL 100 AD Elev 40

m	ft
QNH	QNH
2450	8040
2150	7060
1500	4930



40 - 3

© Navitech - vvnb03aacorgo

Change: New print..

THIS CHART IS A PART OF NAVIGRAPH NDAC AND IS INTENDED FOR FLIGHT SIMULATION USE ONLY

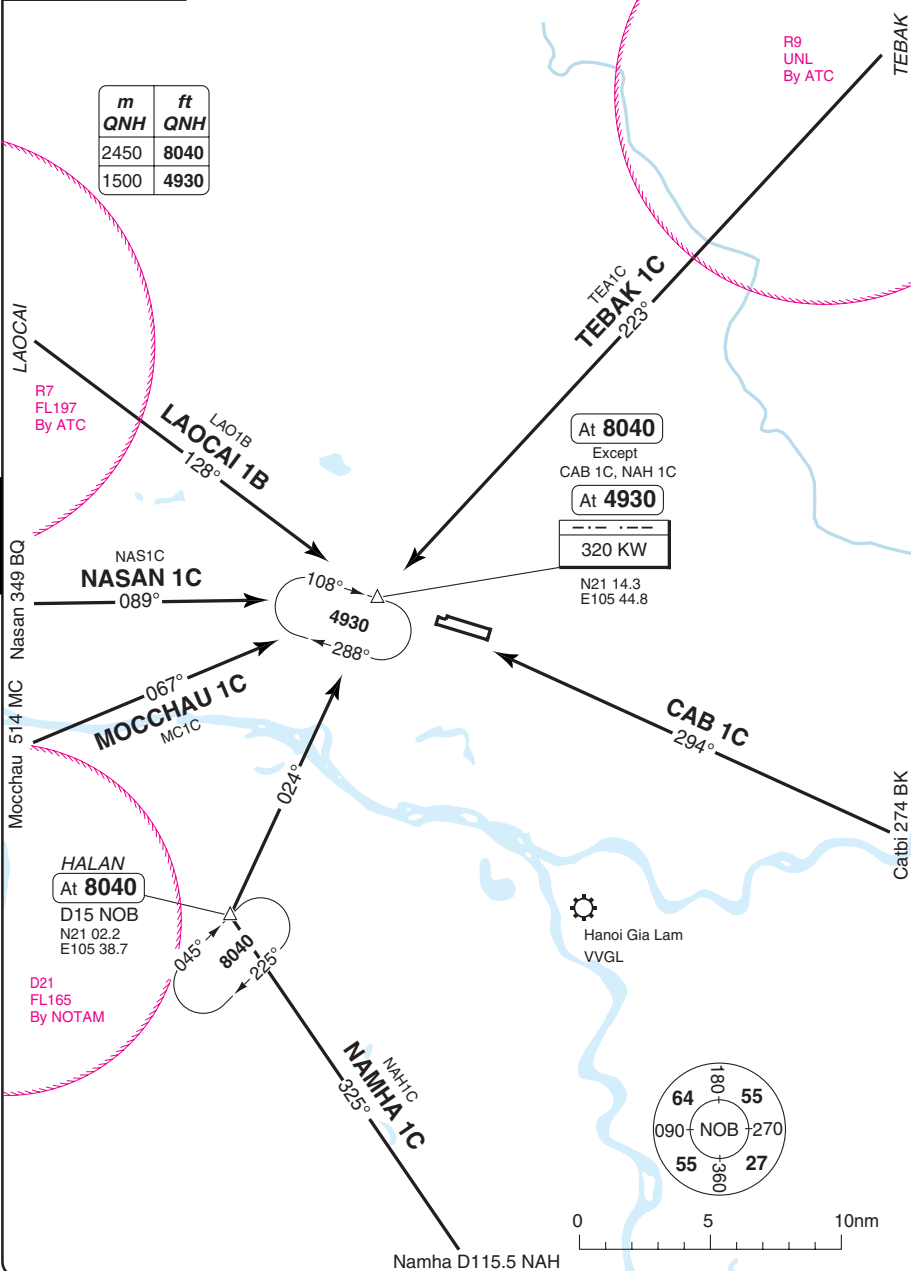
STAR RWY 11L/29R NDB

Noi Bai APP	TWR	GND	ATIS
125.1	118.4	121.9	127.0
121.0	118.9		

TL 100 AD Elev 40

m	ft
QNH	QNH
2450	8040
1500	4930

40 - 4



© Navitech - vvnb04aacorg0

Change: New print.

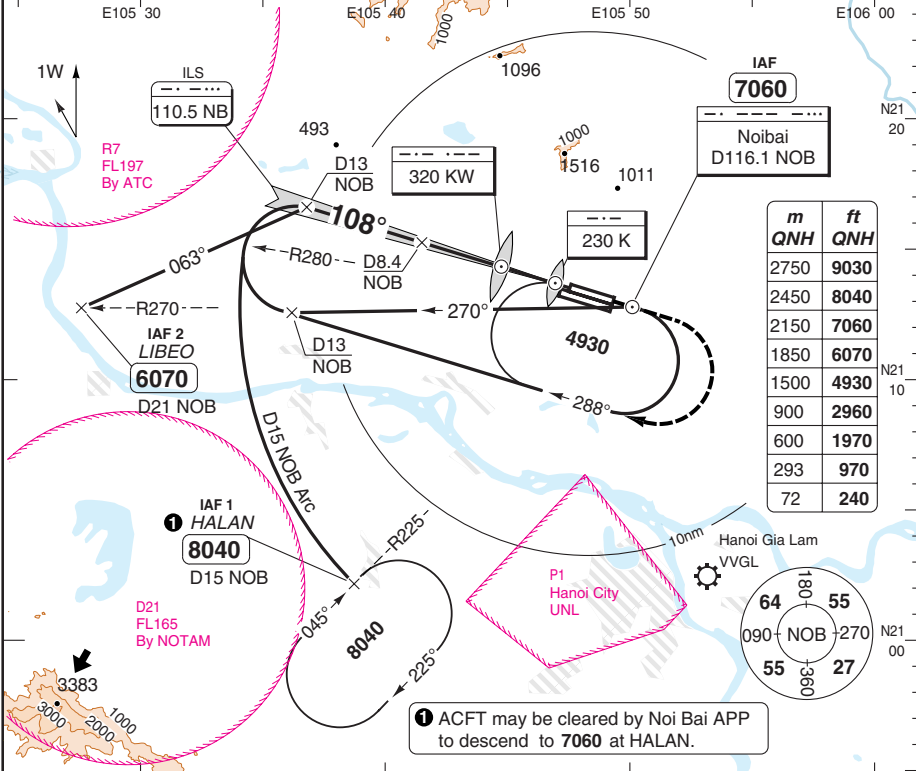
THIS CHART IS A PART OF NAVIGRAPH NDAC AND IS INTENDED FOR FLIGHT SIMULATION USE ONLY

ILS RWY 11L VOR/DME

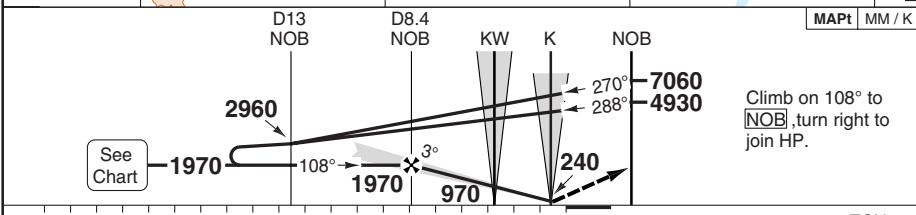
Noi Bai INTL HA NOI

Noi Bai APP	TWR	GND	ATIS
125.1	118.4	121.9	127.0
121.0	118.9		

ILS 110.5 NB	FAT 108°	THR Elev 39 1hPa	AD Elev 40 1hPa	TL 100	TA 9030
--------------	----------	------------------	-----------------	--------	---------



① ACFT may be cleared by Noi Bai APP to descend to 7060 at HALAN.



nm	20	19	18	17	16	15	14	13	12	11	10	9	8	7	6	5	4	3	2	1	0	TCH 52
----	----	----	----	----	----	----	----	----	----	----	----	---	---	---	---	---	---	---	---	---	---	--------

ACFT	ILS+DME	LOC+DME	Circling A
A		550 (502) 1.6km	700 (656) 2.0km
B	240 (200) 0.80km		1190 (1142) 4.0km
C		550 (502) 2.0km	1480 (1437) 5.0km
D		550 (502) 2.8m	1970 (1929) 6.0km

STATE	GS	ROD 3.0°	FAF-MAPt
A	80	420	4:03
B	100	530	3:14
C	120	640	2:42
D	140	740	2:19
E	160	850	2:02

DME NOB	3.0° ALT	LDA 3200x45 10498x147ft P 3°
8.4	1970	
8	1840	
7	1520	
6	1200	
5	890	
4	570	
3.9	550	

Change: ATIS freq, TWR freq, Minima.

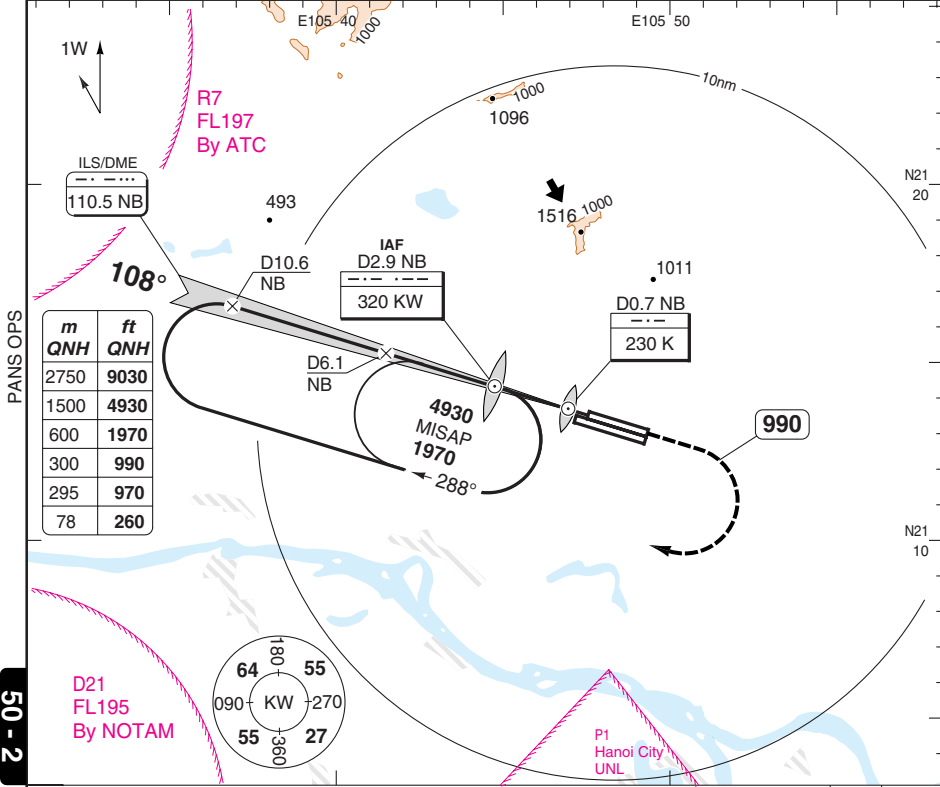
© Navtech - vvnb01aiip00

50 - 1

ILS RWY 11L ILS/DME or NDB

Noi Bai APP	TWR	GND	ATIS
125.1	118.4	121.9	127.0
121.0	118.9		

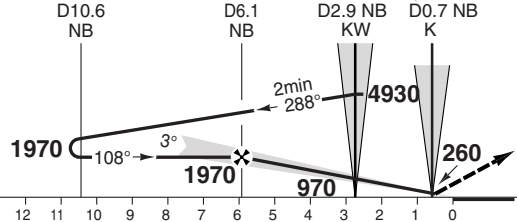
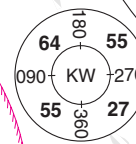
ILS/DME 110.5 NB	FAT 108°	THR Elev 39 1hPa	AD Elev 40 1hPa	TL 100	TA 9030
------------------	----------	------------------	-----------------	--------	---------



PANS OPS

50 - 2

m	ft
2750	9030
1500	4930
600	1970
300	990
295	970
78	260



Climb on 108° to 990, turn right climbing to 1970 to join HP.

MAPt MM / K

nm	13	12	11	10	9	8	7	6	5	4	3	2	1	0	TCH 52		
ACFT	ILS+DME		LOC+DME		Circling a		a S of RWY								DME	3.0°	LDA 3200x45
A			550 (502) 1.6km		700 (656) 2.0km		ILS: 200ft. LOC: 510ft. Circling: CAT A: 730ft CAT B: 1320ft CAT C: 1640ft CAT D: 1970ft								6.1	1970	10498x147ft
B	240 (200)				1190 (1142) 4.0km										6	1940	P 3°
C	0.80km		550 (502) 2.0km		1480 (1437) 5.0km										5	1620	
D			550 (502) 2.8m		1970 (1929) 6.0km										4	1300	
GS	80	100	120	140	160									3	990		
ROD 3.0°	420	550	660	770	880									2	670		
FAF-MAPt	4:03	3:14	2:42	2:19	2:02									1.6	550	FALS	

© Navtech - vvnb02iaip00

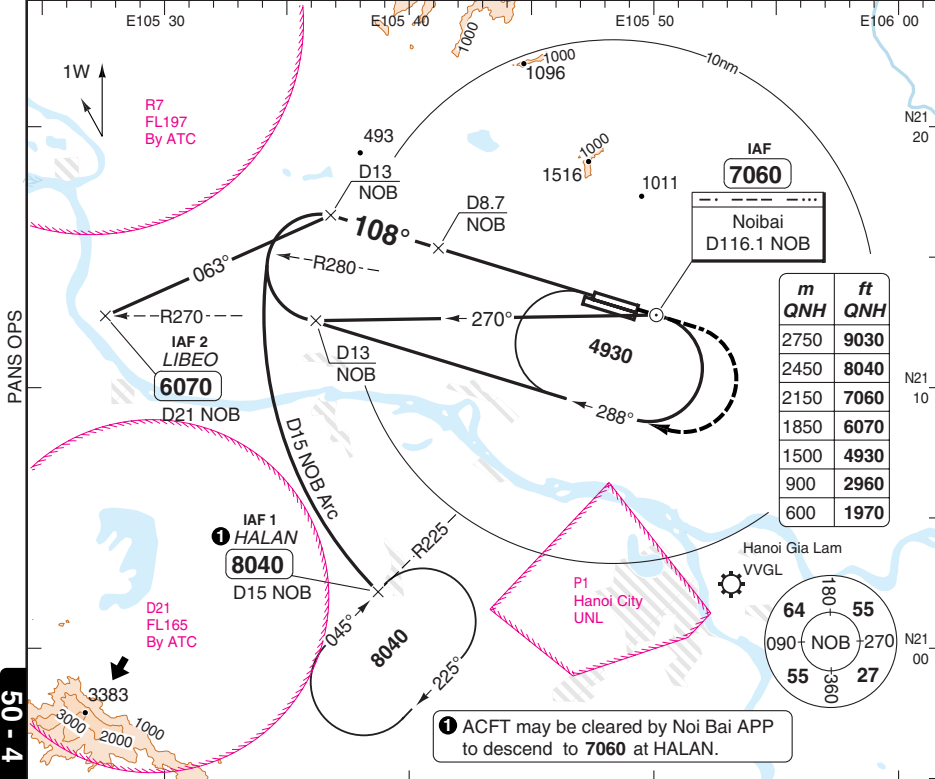
Change: ATIS freq, TWR freq, Minima.

THIS CHART IS A PART OF NAVIGRAPH NDAC AND IS INTENDED FOR FLIGHT SIMULATION USE ONLY

VOR RWY 11L

Noi Bai APP	TWR	GND	ATIS
125.1	118.4	121.9	127.0
121.0	118.9		

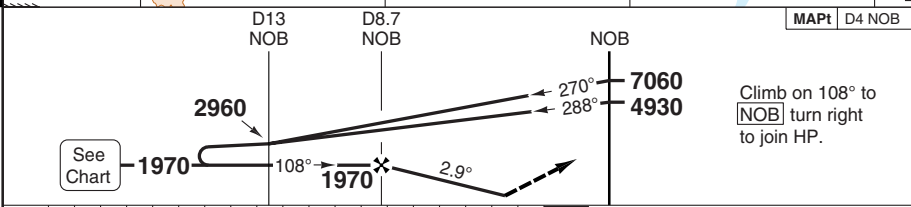
VOR/DME	116.1 NOB	FAT	108°	THR Elev	39 1hPa	AD Elev	40 1hPa	TL	100	TA	9030
---------	-----------	-----	------	----------	---------	---------	---------	----	-----	----	------



① ACFT may be cleared by Noi Bai APP to descend to 7060 at HALAN.

PANS OPS

50 - 4



nm	19	18	17	16	15	14	13	12	11	10	9	8	7	6	5	4	3	2	1	0
----	----	----	----	----	----	----	----	----	----	----	---	---	---	---	---	---	---	---	---	---

ACFT	VOR+DME	Circling a	a S of RWY
A	550 (502) 1.6km	700 (656) 2.0km	VOR + DME: 510ft. Circling: CAT A: 730ft
B	550 (502) 2.0km	1190 (1142) 4.0km	CAT B: 1320ft
C	550 (502) 2.0km	1480 (1437) 5.0km	CAT C: 1640ft
D	550 (502) 2.4km	1970 (1929) 6.0km	CAT D: 1970ft

GS	80	100	120	140	160
ROD 2.9°	410	510	620	720	820
FAF-MAPt	3:32	2:49	2:21	2:01	1:46

DME NOB	2.9° ALT	LDA 3200x45 10498x147ft P 3°
8.7	1970	
8	1750	
7	1440	
6	1130	
5	830	
4	550	FALS

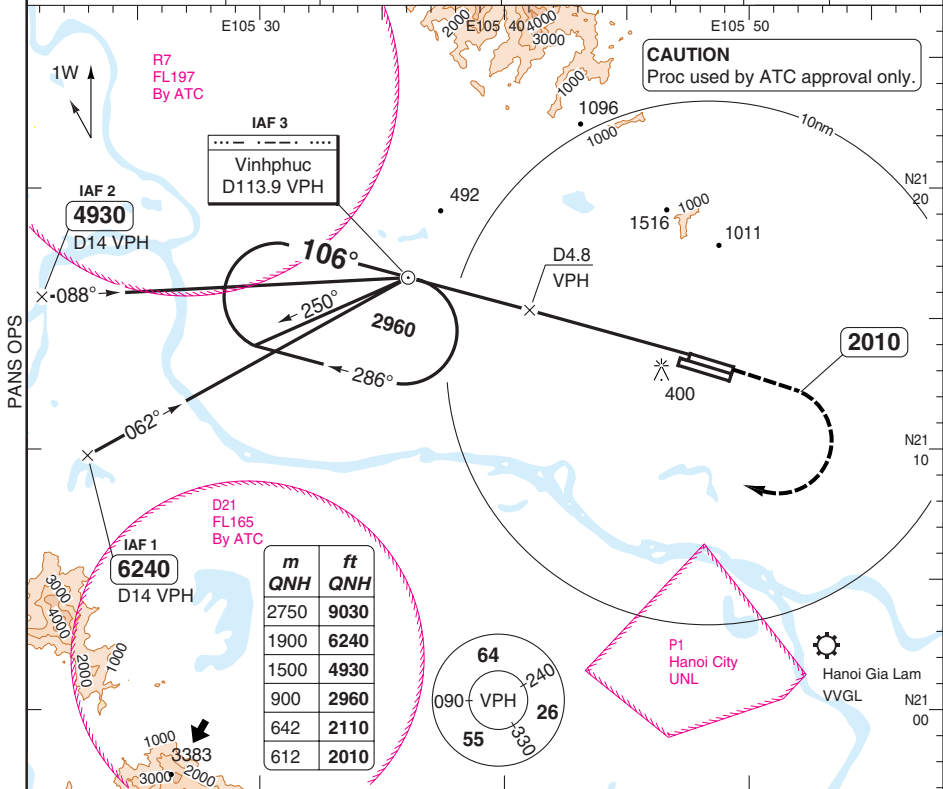
© Navtech - vvnb04iap00

VOR Z RWY 11L VPH

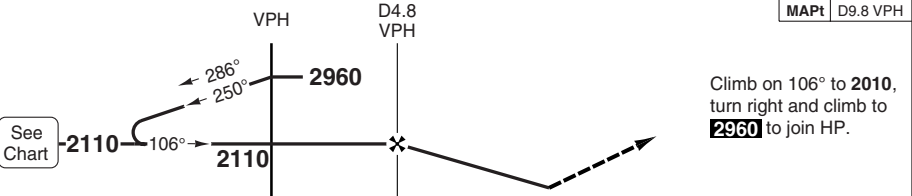
Noi Bai APP	TWR	GND	ATIS
125.1	118.4	121.9	127.0
121.0	118.9		

VOR/DME 113.9 VPH	FAT 106°	THR Elev 39 1hPa	AD Elev 40 1hPa	TL 100	TA 9030
-------------------	----------	------------------	-----------------	--------	---------

CAUTION
Proc used by ATC approval only.



50 - 5



nm	17	16	15	14	13	12	11	10	9	8	7	6	5	4	3	2	1	0
----	----	----	----	----	----	----	----	----	---	---	---	---	---	---	---	---	---	---

ACFT **VOR+DME** Circling **a** **a** S of RWY

STATE	ACFT	VOR+DME	Circling a	a S of RWY
A	520 (476)	2.4km	660 (617) 2.4km	VOR + DME: 530ft.
B			1190 (1142) 4.0km	Circling: CAT A: 730ft
C	520 (476)	2.8km	1480 (1437) 5.0km	CAT B: 1320ft
D			1970 (1929) 6.0km	CAT C: 1640ft
				CAT D: 1970ft

DME VPH	3.0° ALT	LDA 3200x45
4.8	2110	10498x147ft
5	2060	P 3°
6	1740	
7	1420	
8	1100	
9	780	
9.8	520	

GS	80	100	120	140	160
ROD 3.0°	420	530	640	740	850
FAF-MAPt	3:45	3:00	2:30	2:09	1:52

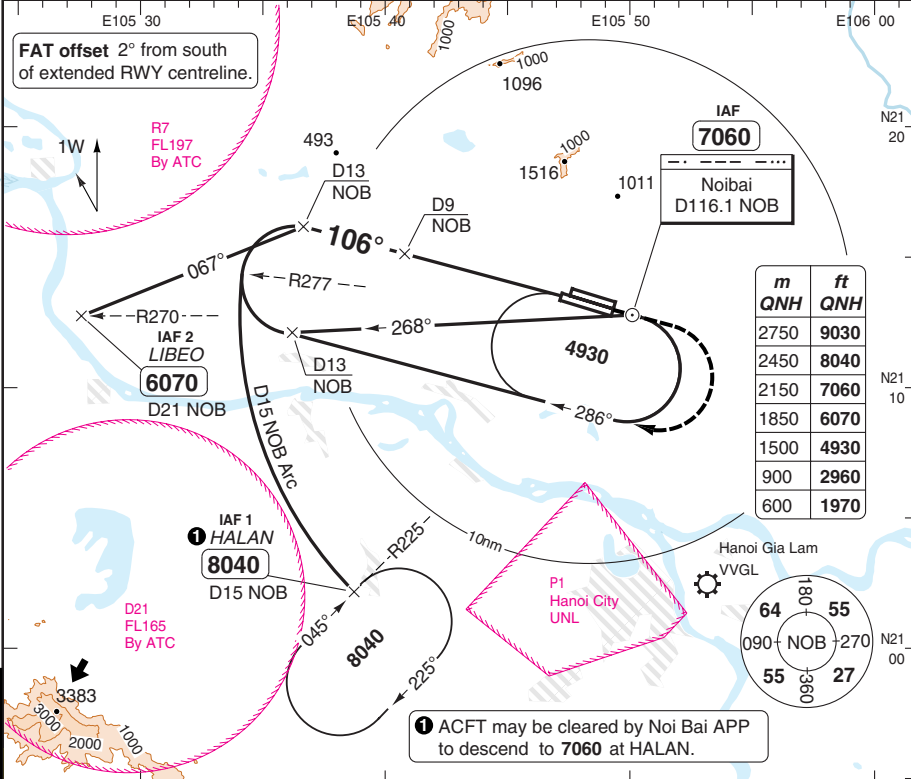
© Navitech - vvnb05iaip00

FALS

VOR RWY 11R

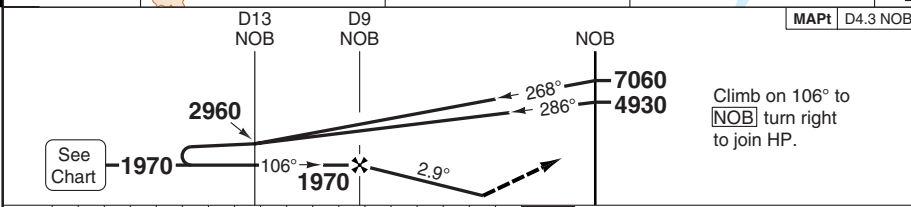
Noi Bai APP	TWR	GND	ATIS
125.1	118.4	121.9	127.0
121.0	118.9		

VOR/DME 116.1 NOB	FAT 106°	THR Elev 38 1hPa	AD Elev 40 1hPa	TL 100	TA 9030
-------------------	----------	------------------	-----------------	--------	---------



50 - 6

① ACFT may be cleared by Noi Bai APP to descend to 7060 at HALAN.



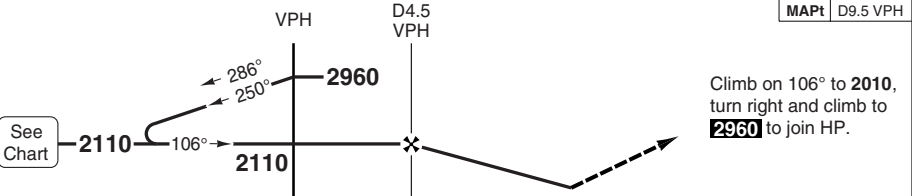
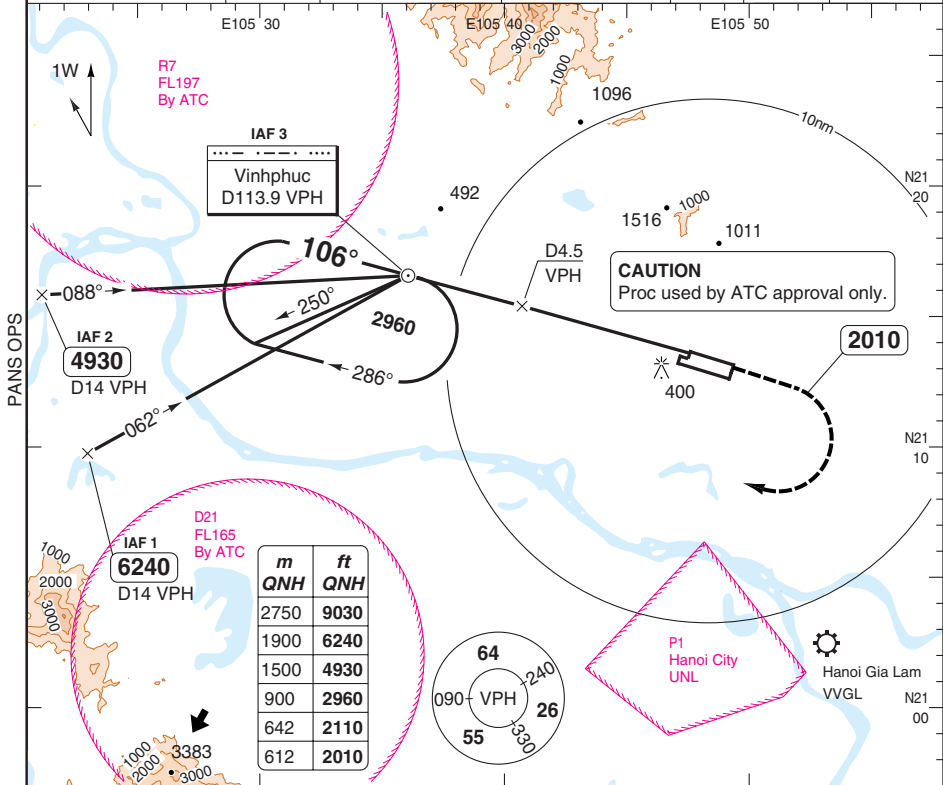
nm	18	17	16	15	14	13	12	11	10	9	8	7	6	5	4	3	2	1	0
ACFT	VOR+DME		Circling a																
A	550 (502)		700 (656) 2.4km / 2.9°																
B	1.6km		1190 (1142) 4.0km / 2.9°																
C	550 (502)		1480 (1437) 5.0km / 2.9°																
D	550 (502)		1970 (1929) 6.0km / 2.9°																
GS	80	100	120	140	160														
ROD 2.9°	410	510	620	720	820														
FAF-MAPt	3.32	2:49	2:21	2:01	1:46														

© Navitech - vvnb06iap00

VOR Z RWY 11R VPH

Noi Bai APP	TWR	GND	ATIS
125.1	118.4	121.9	127.0
121.0	118.9		

VOR/DME 113.9 VPH	FAT 106°	THR Elev 39 1hPa	AD Elev 40 1hPa	TL 100	TA 9030
-------------------	----------	------------------	-----------------	--------	---------



nm	18	17	16	15	14	13	12	11	10	9	8	7	6	5	4	3	2	1	0
----	----	----	----	----	----	----	----	----	----	---	---	---	---	---	---	---	---	---	---

ACFT	VOR+DME	Circling $\text{\textcircled{a}}$
A	520 (476) 2.4km	660 (617) 2.4km
B		1190 (1142) 4.0km
C	520 (476) 2.8km	1480 (1437) 5.0km
D		1970 (1929) 6.0km

$\text{\textcircled{a}}$ S of RWY
 VOR + DME: 530ft.
 Circling: CAT A: 730ft
 CAT B: 1320ft
 CAT C: 1640ft
 CAT D: 1970ft

DME VPH	3.0° ALT	LDA 3200x45
4.5	2110	10498x147ft
5	1950	P 3°
6	1630	
7	1320	
8	1000	
9	680	
9.5	520	

GS	80	100	120	140	160
ROD 3.0°	420	530	640	740	850
FAF-MAPt	3.45	3:00	2:30	2:09	1:52

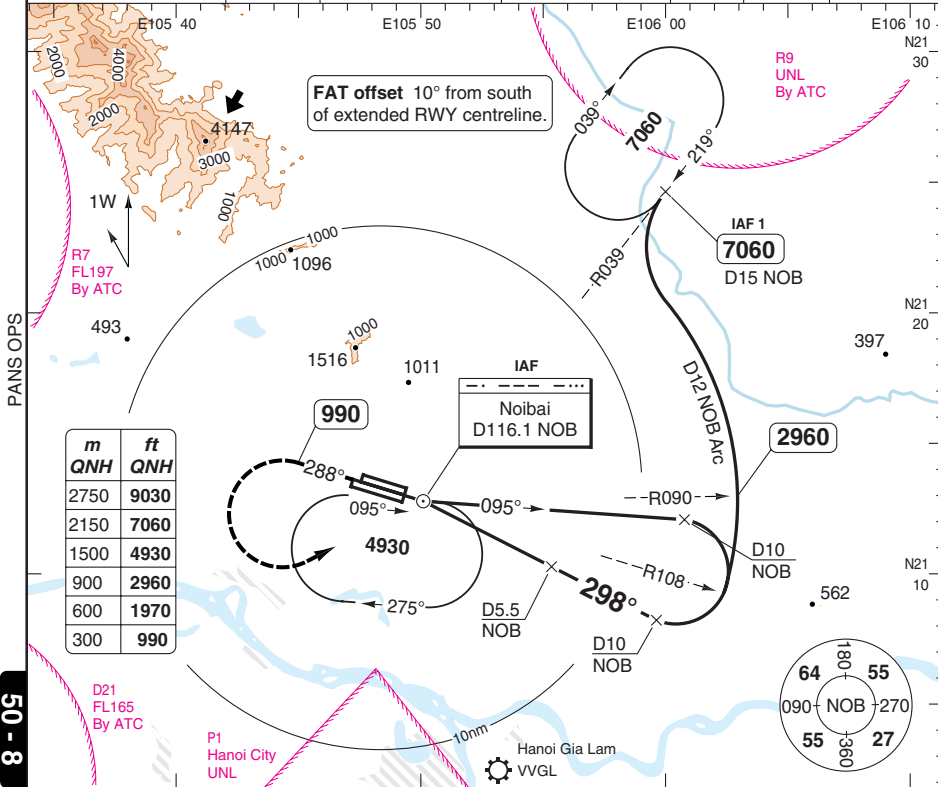
© Navitech - vvnb07iaip00

50 - 7

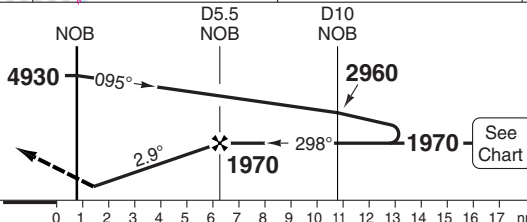
VOR RWY 29L

Noi Bai APP	TWR	GND	ATIS
125.1	118.4	121.9	127.0
121.0	118.9		

VOR/DME 116.1 NOB	FAT 298°	THR Elev 39 1hPa	AD Elev 40 1hPa	TL 100	TA 9030
-------------------	----------	------------------	-----------------	--------	---------



Turn left and climb on R288 [NOB] to 990, turn left and climb to [NOB] to join HP.



ACFT	VOR+DME	Circling a	a S of RWY	DME NOB	2.9° ALT	LDA 3800x45 12467x147ft P 3°
A	550 (502) 2.4km	700 (655) 2.4km	a S of RWY VOR + DME: 510ft. Circling: CAT A: 730ft CAT B: 1320ft CAT C: 1640ft CAT D: 1970ft	5.5	1970	
B		1190 (1142) 4.0km		5	1820	
C	550 (502) 2.8km	1480 (1437) 5.0km		4	1510	
D		1970 (1929) 6.0km		3	1200	
GS	80 100 120 140 160		2	900		
ROD 2.9°	410 510 620 720 820		1	600		
FAF-MAPt	3.32 2:49 2:21 2:01 1:46		0.7	550		

© Navitech - vvn08iaip00

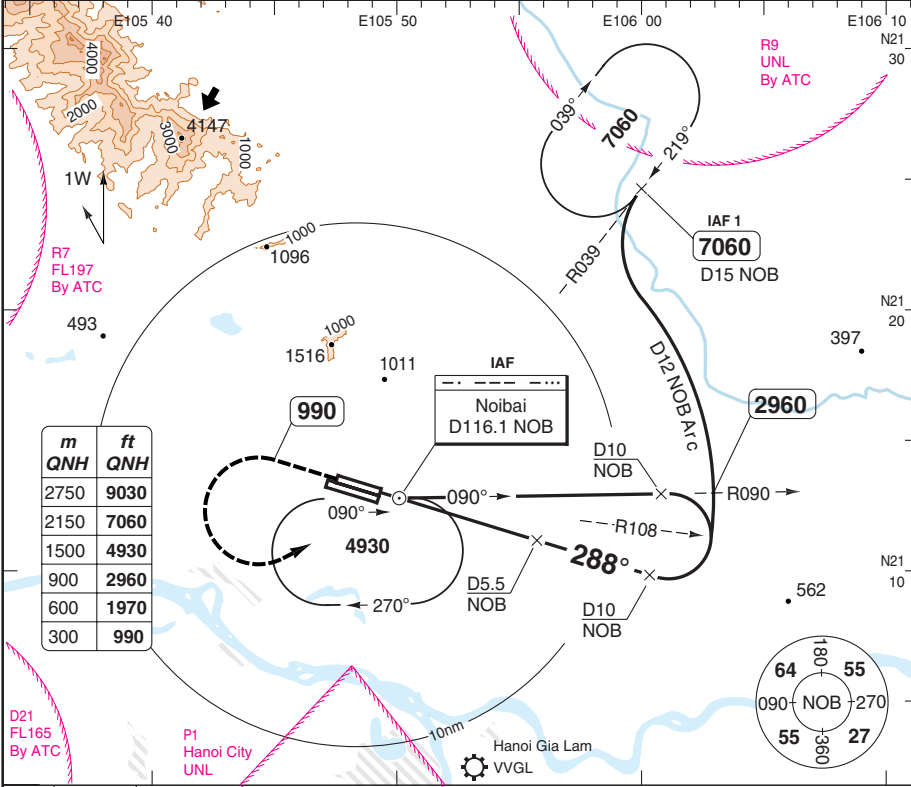
IALS 420

Change: ATIS freq, TWR freq, Minima.

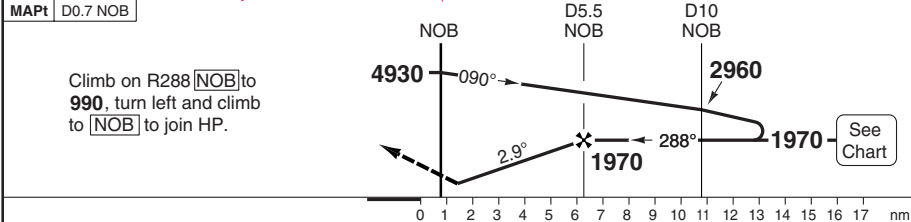
VOR RWY 29R

Noi Bai APP	TWR	GND	ATIS
125.1	118.4	121.9	127.0
121.0	118.9		

VOR/DME 116.1 NOB	FAT 288°	THR Elev 40 1hPa	AD Elev 40 1hPa	TL 100	TA 9030
-------------------	----------	------------------	-----------------	--------	---------



m	ft
2750	9030
2150	7060
1500	4930
900	2960
600	1970
300	990



Climb on R288 [NOB] to 990, turn left and climb to [NOB] to join HP.

ACFT	VOR+DME	Circling a	a S of RWY	DME	2.9° ALT	LDA 3200x45
A	550 (502) 2.4km	700 (655) 2.4km	VOR + DME: 510ft. Circling: CAT A: 730ft CAT B: 1320ft CAT C: 1640ft CAT D: 1970ft	5.5	1970	10498x147ft NALS
B		1190 (1142) 4.0km		5	1820	
C	550 (502) 2.8km	1480 (1437) 5.0km		4	1510	
D		1970 (1929) 6.0km		3	1200	
				2	900	
				1	600	
				0.7	550	

GS	80	100	120	140	160
ROD 2.9°	410	510	620	720	820
FAF-MAPt	3:36	2:53	2:24	2:03	1:48

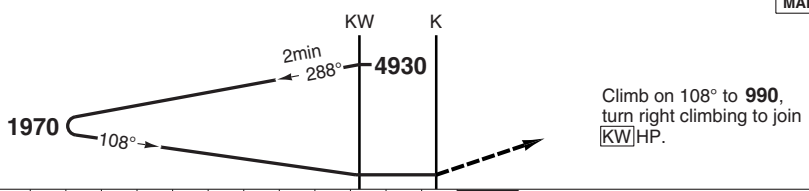
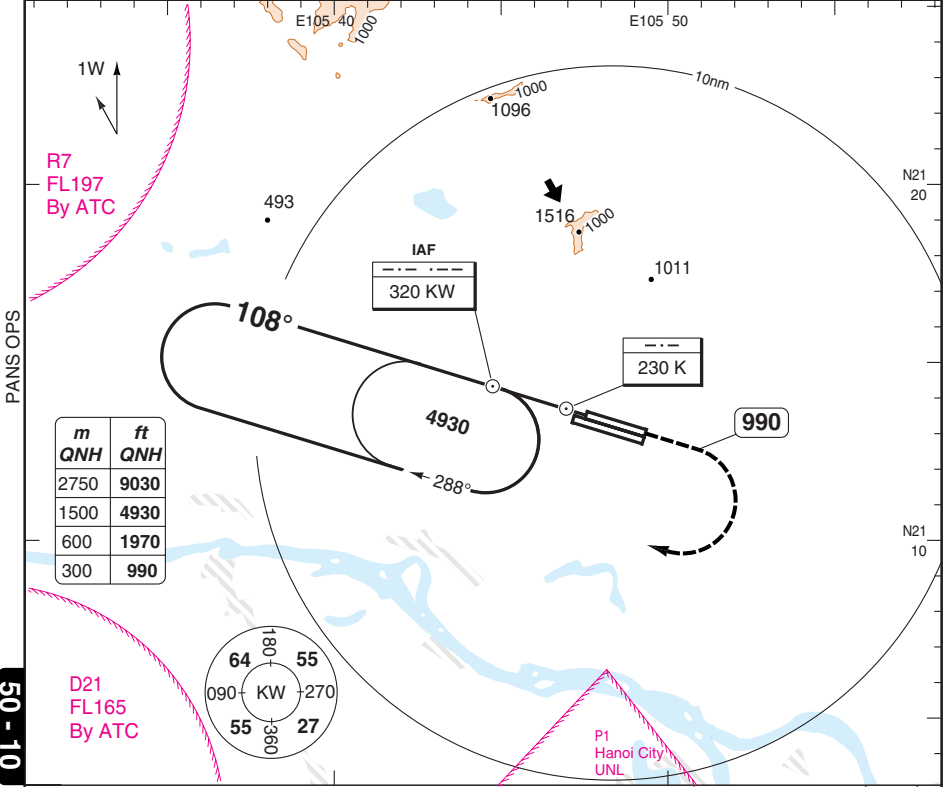
© Navtech - vvn09iaip00

50 - 9

NDB RWY 11L

Noi Bai APP	TWR	GND	ATIS
125.1	118.4	121.9	127.0
121.0	118.9		

NDB 320 KW	FAT 108°	THR Elev 39 1hPa	AD Elev 40 1hPa	TL 100	TA 9030
------------	----------	------------------	-----------------	--------	---------



nm	13	12	11	10	9	8	7	6	5	4	3	2	1	0
----	----	----	----	----	---	---	---	---	---	---	---	---	---	---

ACFT	NDB	NDB a	Circling b
A	550 (502) 1.6km	550 (502) 1.8km	700 (656) 2.0km
B	550 (502)	550 (502)	1190 (1142) 4.0km
C	550 (502) 2.0km	550 (502) 2.0km	1480 (1437) 5.0km
D	550 (502) 2.8m	550 (502) 2.8m	1970 (1929) 6.0km

a Non CDFA.
b S of RWY

NDB: 510ft.
Circling: CAT A: 730ft
CAT B: 1320ft
CAT C: 1640ft
CAT D: 1970ft

LDA 3200x45
10498x147ft
P 3°



