

Airport information:

Country: Thailand

City: CHIANG MAI INTL

Coordinates: N 18° 46.3', E098 57.8

Elevation: 1035

Customs: Customs: MON-SUN 2300-1630, beyond this period 1 HR PN.

Fuel: 100LL, Jet A1

RFF: CAT 9

hours: AD administration: MON-2UN 2300-1630, beyond this period 1 HR PN, ATC. H24

Runways:

Runway 18

Takeoff length: 3400, Landing length: 3100

Runway 36

Takeoff length: 3100, Landing length: 3100

Aerodrome Briefing Card

1. GEOGRAPHICAL DATA

- 1.1 CNX is situated in the NW corner of Thailand and the AD is located 2nm SW of the city in a N to S running valley. Surrounded with high terrain on both sides. Heights within 10nm up to 5600ft to the NW (with Phu Phing Palace on top) and up to 2300ft to the SW.
- 1.2 Observe the restricted areas in the vicinity.

2. WEATHER

- 2.1 During DEC-MAR, fog and mist can be expected early in the morning. Average temperatures at this time are +20°C to +30°C.
- 2.2 From APR onwards the rain starts and thunderstorms can be quite heavy with reduced visibility and gusts variable in direction. The rainy season continuing through MAY with MAX of rain in AUG and SEP.

During OCT-NOV the weather is generally clear.

3. TRAFFIC

Open.

4. MISCELLANEOUS

Open.

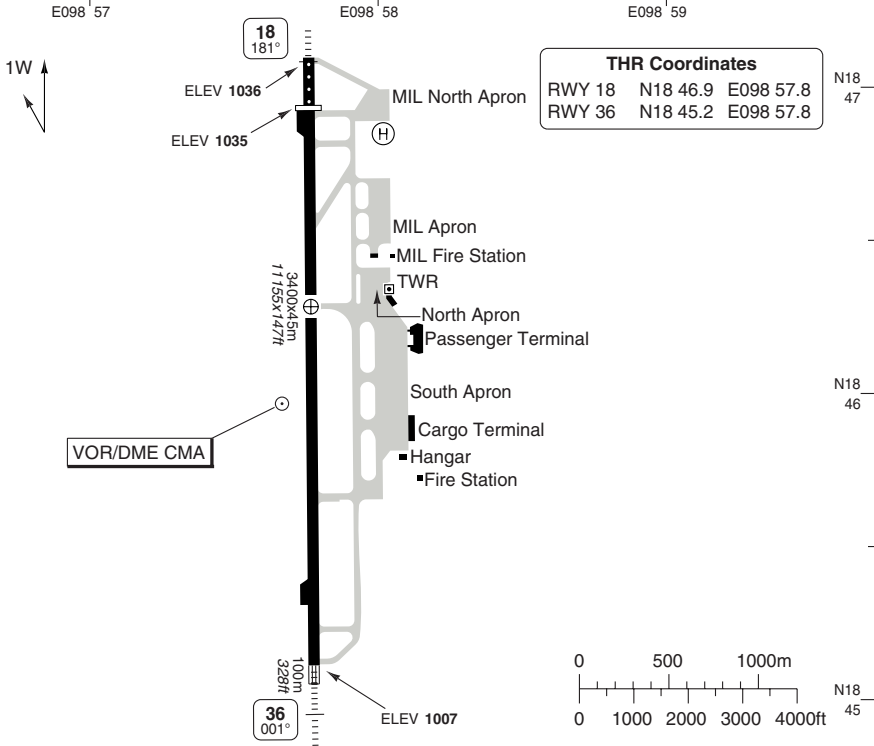
5. REPORTS

Open.

AERODROME

Chiang Mai GND 121.9	TWR 118.1	RAD 129.6	ATIS 127.2
-------------------------	--------------	--------------	---------------

AD Elev 1036	ARP: N18 46.3 E098 57.8	RFF: CAT 9	AD HR: H24
--------------	-------------------------	------------	------------



RWY	Slope	TORA m/ft	LDA m/ft	ALS	REDL	Additional
18	-0.3	3400 / 11155 ③	3100 / 10170	H-K ①	H ②	P 3°L/R (60)
36	+0.3	3100 / 10170	3100 / 10170	H-K ①	H ②	P 3°L/R (60)

① 420m. ② White ③ 300m Starter Extension Included.

EU OPS TAKE OFF MINIMA

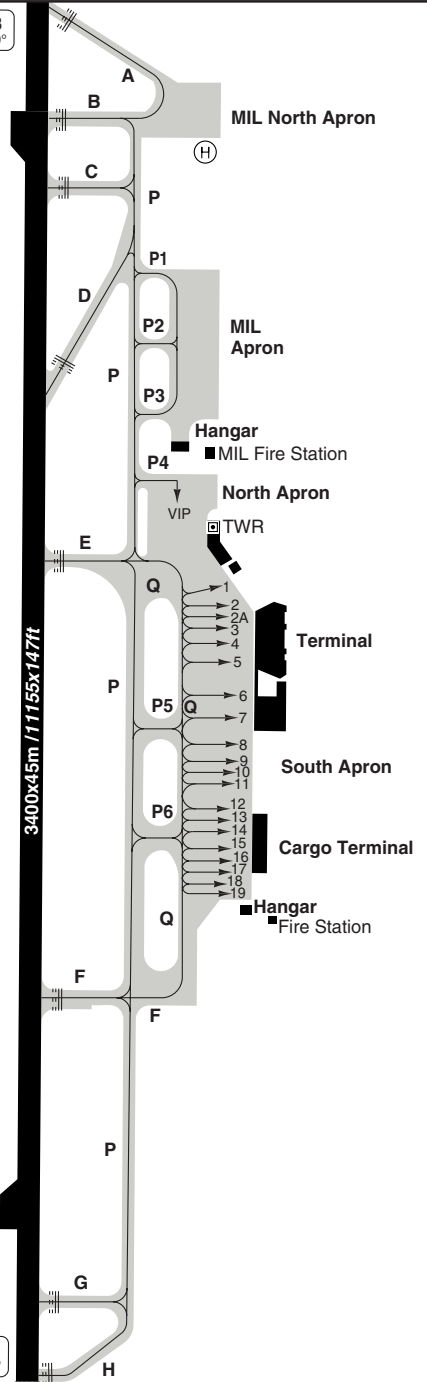
RWY	Facilities	RVR			
		A	B	C	D
18/36	RCL (day only) or RCL + REDL	400 m			
	NIL (day only)	500 m			

AERODROME Overview

Chiang Mai GND 121.9	TWR 118.1	RAD 129.6	ATIS 127.2
--------------------------------	---------------------	---------------------	----------------------

18
179°

Parking position coordinates		
1	N18 46.3	E098 58.0
2-4	N18 46.2	E098 58.0
5, 6	N18 46.1	E098 58.1
7	N18 46.1	E098 58.0
8-15	N18 46.0	E098 58.0
16-19	N18 45.9	E098 58.0
VIP	N18 46.6	E098 58.0



36
359°

© Navitech - vtcc02laorg0

Change: New spec.

THIS CHART IS A PART OF NAVIGRAPH NDAC AND IS INTENDED FOR FLIGHT SIMULATION USE ONLY

GENERAL

GENERAL

1. **WARNING**
Bird Hazard.
High terrain west of aerodrome.
2. **NAV RESTRICTION**
 - 2.1 VOR/DME CMA unusable:
350°-080° beyond 40nm below 8000.
081°-180° beyond 40nm below 7000.
181°-240° beyond 40nm below 9000.
241°-349° beyond 20nm below 12000.
 - 2.2 NDB CGM unusable:
BRG 090°-210° below 5500.
BRG 211°-340° below 8500.
BRG 341°-089° below 8000.
3. **TWY RESTRICTION**
TWY F MAX B737.

3. PARKING

Safedock type 2S at stand 4-8.

DEPARTURE

1. START-UP PROCEDURE

Contact GND 5min prior start-up for ATC clearance, give C/S and FL if different from FPL.

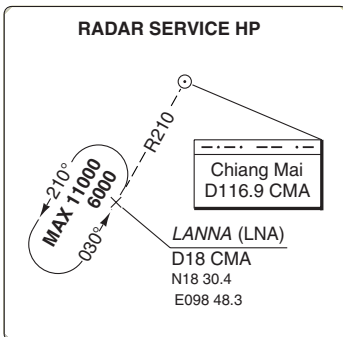
ACFT must be ready to taxi within 5min after ATC clearance is accepted, otherwise ATC clearance will be cancelled.

Not Applicable to domestic flights.

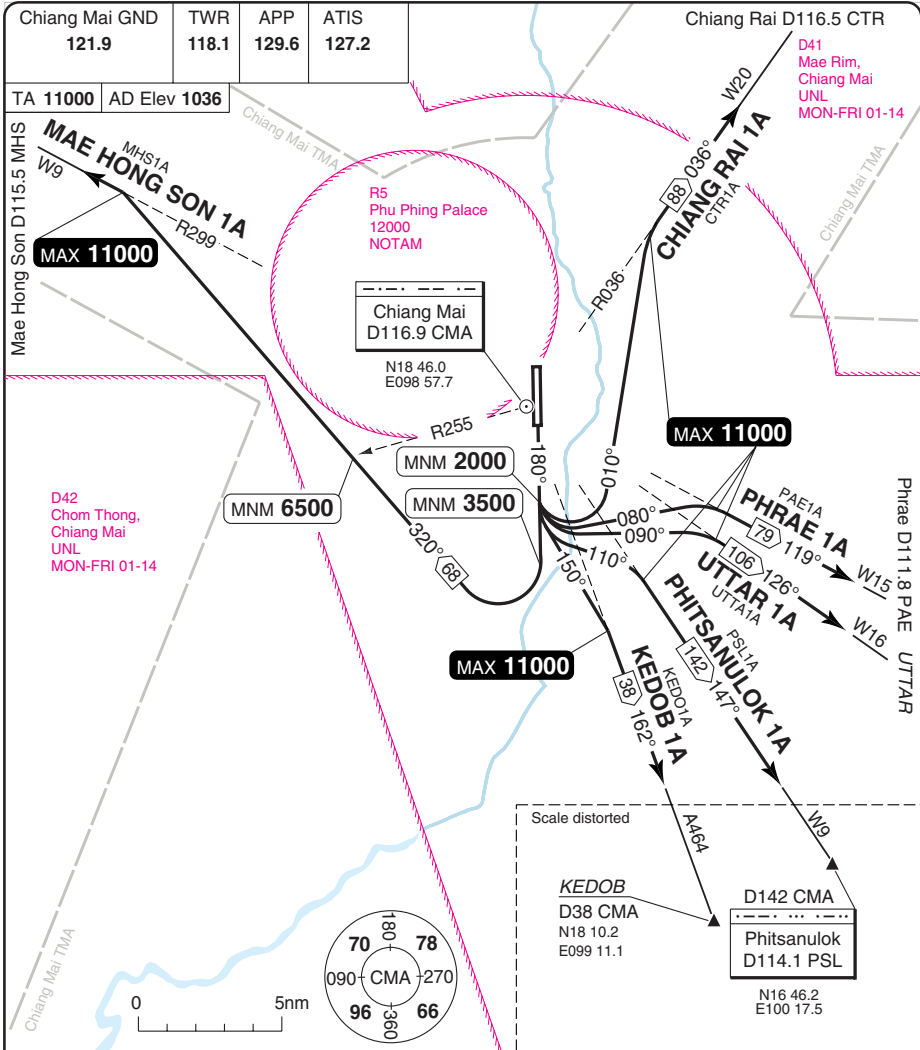
ARRIVAL

1. **RADAR SERVICE HP**
LANNA HP established. See page 10 - 1.
2. **TRAFFIC NOTE**
Right hand circuit RWY 36.

RADAR SERVICE HP



SID RWY 18



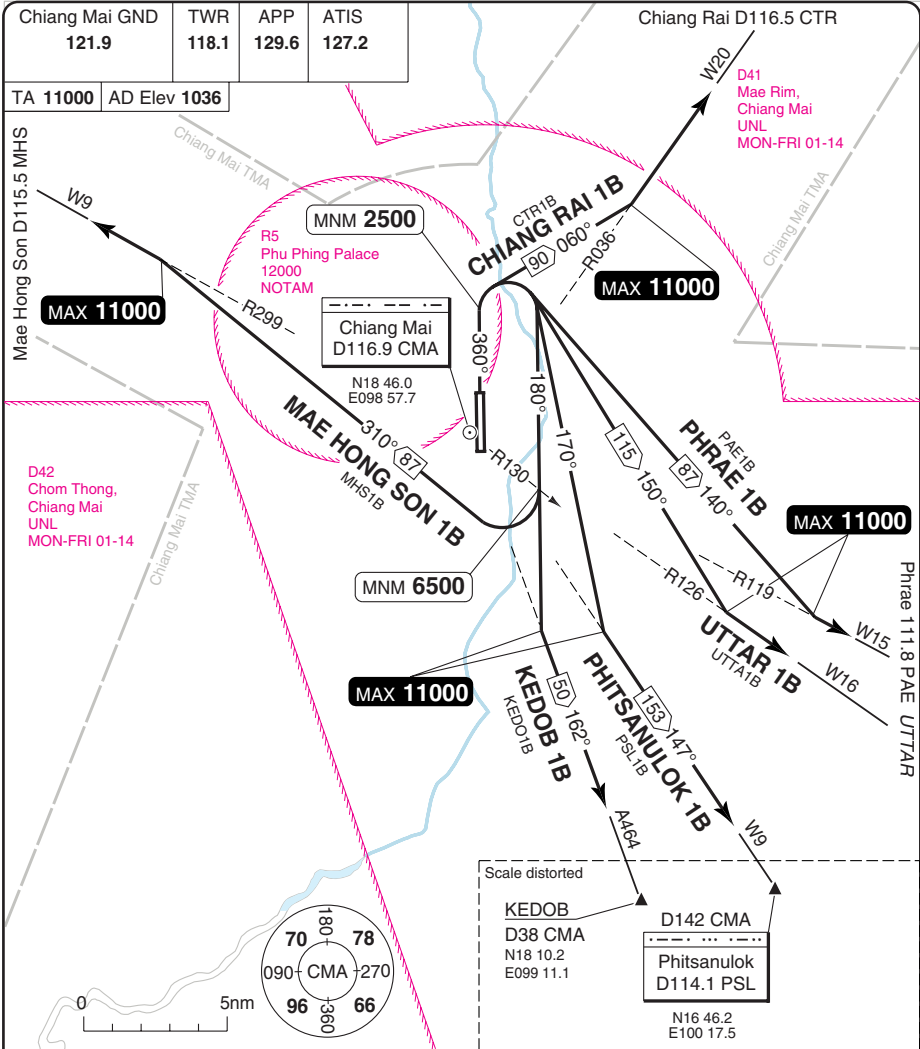
COM: Contact APP 129.6 after TKOF.

ALT RESTRICTION: Climb to join airways MAX **11000**.

SID	Routeing	Altitudes
(INITIAL CLIMB) (Except MHS 1A)	Climb on HDG 180°, at MNM 2000 turn left - follow SID.	
CHIANG RAI 1A	HDG 010° - R036 CMA - CTR.	
KEDOB 1A	HDG 150° - R162 CMA - KEDOB.	
MAE HONG SON 1A	Climb on 180° - at MNM 3500 turn right HDG 320° - R299 CMA - MHS.	R255 CMA MNM 6500
PHITSANULOK 1A	HDG 110° - R147 CMA - PSL.	
PHRAE 1A	HDG 080° - R119 CMA - PAE.	
UTTAR 1A	HDG 090° - R126 CMA - UTTAR.	

Change: New spec.

SID RWY 36



COM: Contact APP 129.6 after TKOF.

ALT RESTRICTION: Climb to join airways MAX **11000**.

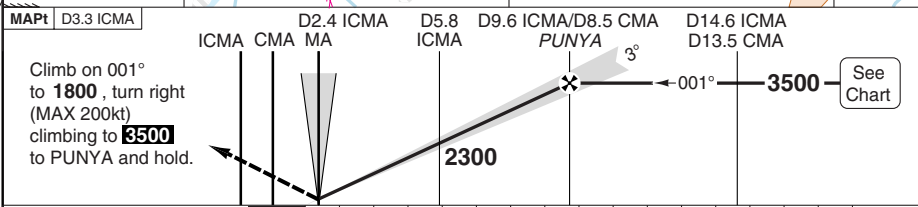
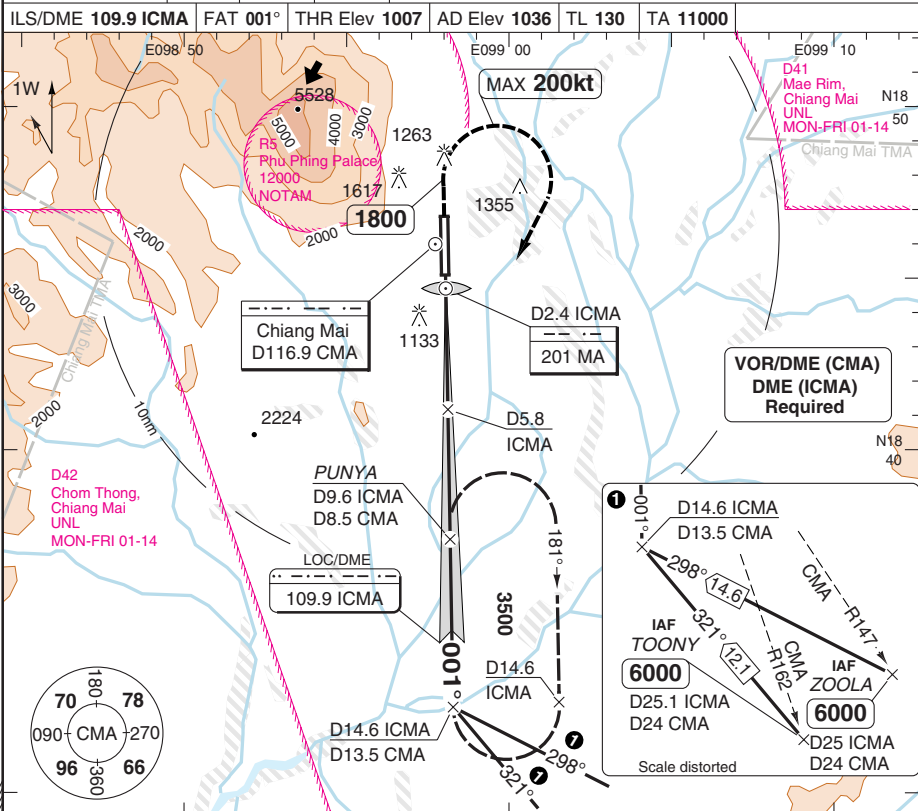
SID	Routing	Altitudes
INITIAL CLIMB	Climb on HDG 360°, at MNM 2500 turn right - follow SID.	
CHIANG RAI 1B	HDG 060° - R036 CMA - CTR.	
KEDOB 1B	HDG 180° - R162 CMA - KEDOB.	
MAE HONG SON 1B	HDG 180° - at R130 CMA turn right - HDG 310° - R299 CMA - MHS.	R130 CMA MNM 6500
PHITSANULOK 1B	HDG 170° - R147 CMA - PSL.	
PHRAE 1B	HDG 140° - R119 CMA - PAE.	
UTTAR 1B	HDG 150° - R126 CMA - UTTAR.	

Change: New spec.

THIS CHART IS A PART OF NAVIGRAPH NDAC AND IS INTENDED FOR FLIGHT SIMULATION USE ONLY

ILS RWY 36

Chiang Mai APP 129.6	TWR 118.1	GND 121.9	ATIS 127.2
ILS/DME 109.9 ICMA	FAT 001°	THR Elev 1007	AD Elev 1036 TL 130 TA 11000



TCH 55						DME 3.0°						LDA 3100x45 10170x147ft P 3°L/R (60)	
ACFT	ILS+DME	LOC+DME	Circling ^a			DME ALT						IALS	
A	1350 (341) 1200m	1500 (493)	2100 (1064) 1.5km			9.6	3500						
B	1360 (351) 1200m	1500m	2100 (1064) 1.6km			9	3330						
C	1370 (361) 1300m	1500 (493)	2200 (1164) 2.4km			8	3010						
D	1380 (371) 1300m	1800m	2200 (1164) 3.6km			7	2690						
GS	80	100	120	140	160	6	2370						
ROD 3.0°	430	540	640	750	860	5	2050						
FAF-MAPt	4:43	3:46	3:09	2:42	2:22	4	1730						
						3.3	1500						

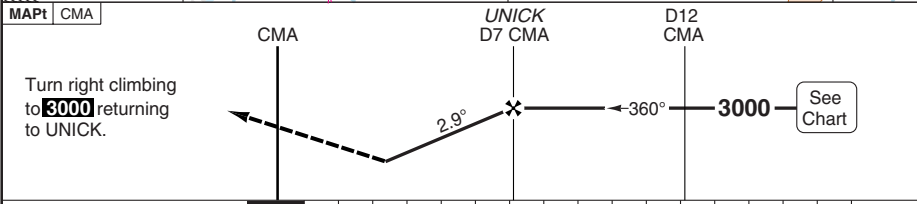
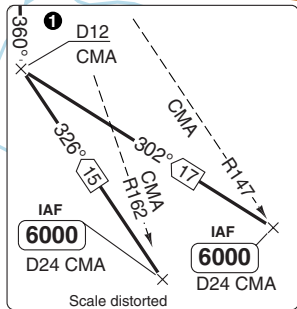
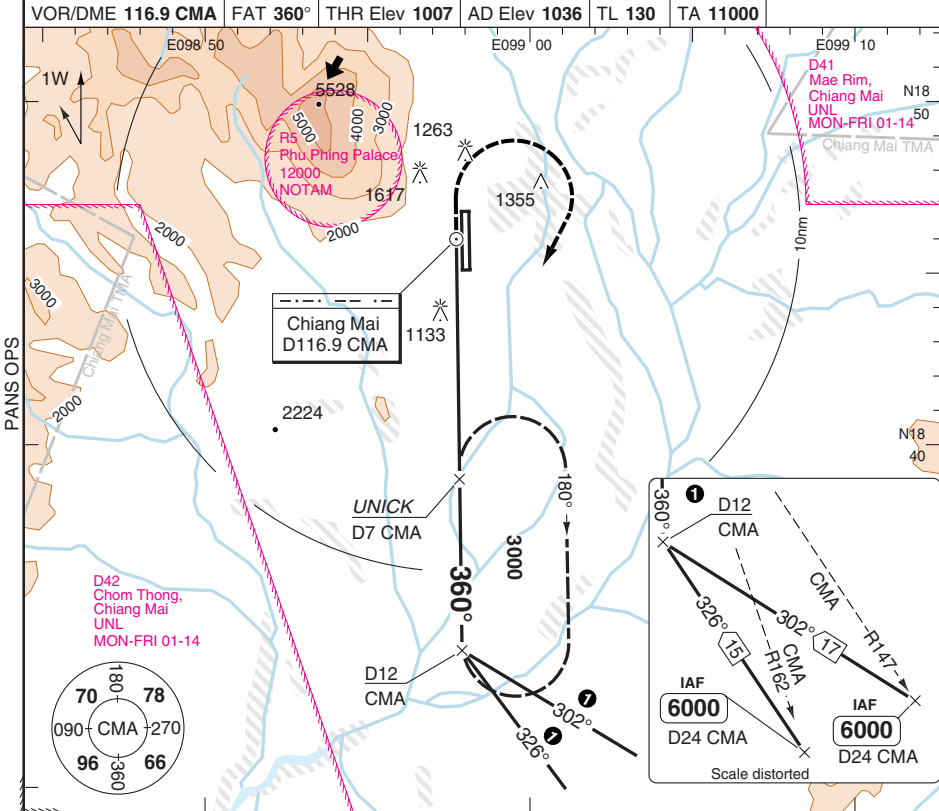
© Navtech - vtcc01aip00

Change: New print

THIS CHART IS A PART OF NAVIGRAPH NDAC AND IS INTENDED FOR FLIGHT SIMULATION USE ONLY

VOR RWY 36 VOR/DME

Chiang Mai APP 129.6	TWR 118.1	GND 121.9	ATIS 127.2	
VOR/DME 116.9 CMA	FAT 360°	THR Elev 1007	AD Elev 1036	TL 130 TA 11000



ACFT	VOR+DME	Circling ^a	^a East of AD	DME ALT	LDA 3100x45 10170x147ft P 3°L/R (60)
A	1720 (714) 1500m	2060 (1016) 1.5km		3.0° CMA	
B	1740 (734) 1500m	2060 (1016) 1.6km		7 3000	
C	1770 (764) 2400m	2160 (1116) 2.4km		6 2690	
D	1790 (784) 2400m	2160 (1116) 3.6km		5 2380	
				4 2060	
				3.1 1790	

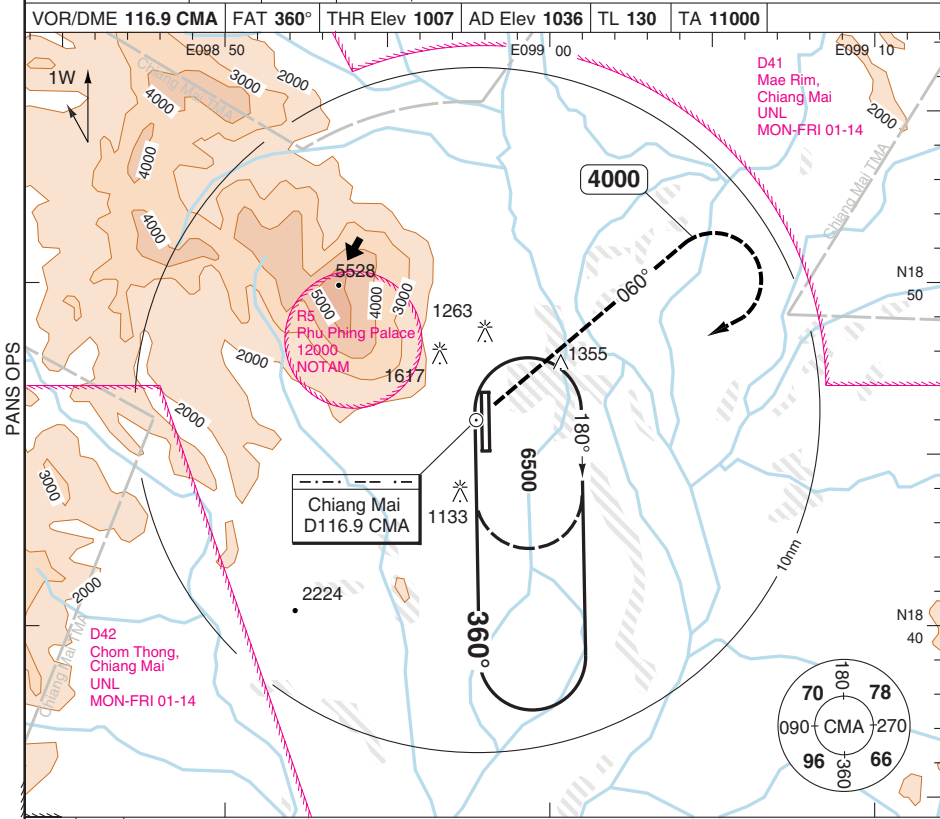
GS	80	100	120	140	160
ROD 3.0°	420	530	630	740	840

© Navtech - vtcc02iaip00
EU OPS

IALS
420

VOR RWY 36

Chiang Mai APP 129.6	TWR 118.1	GND 121.9	ATIS 127.2
VOR/DME 116.9 CMA	FAT 360°	THR Elev 1007	AD Elev 1036
TL 130	TA 11000		



MAPt CMA

Turn right and climb on R060 **D116.9 CMA** to **4000**, return to **CMA** climbing to **6500**. Climb to **2200** prior to acceleration.

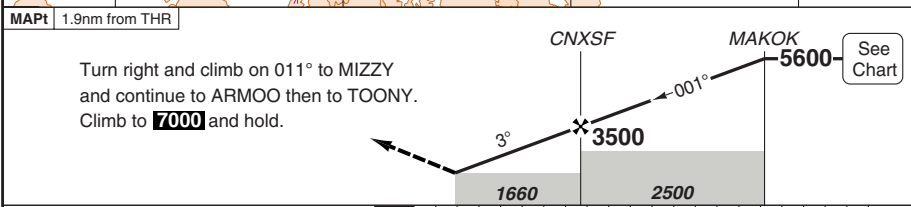
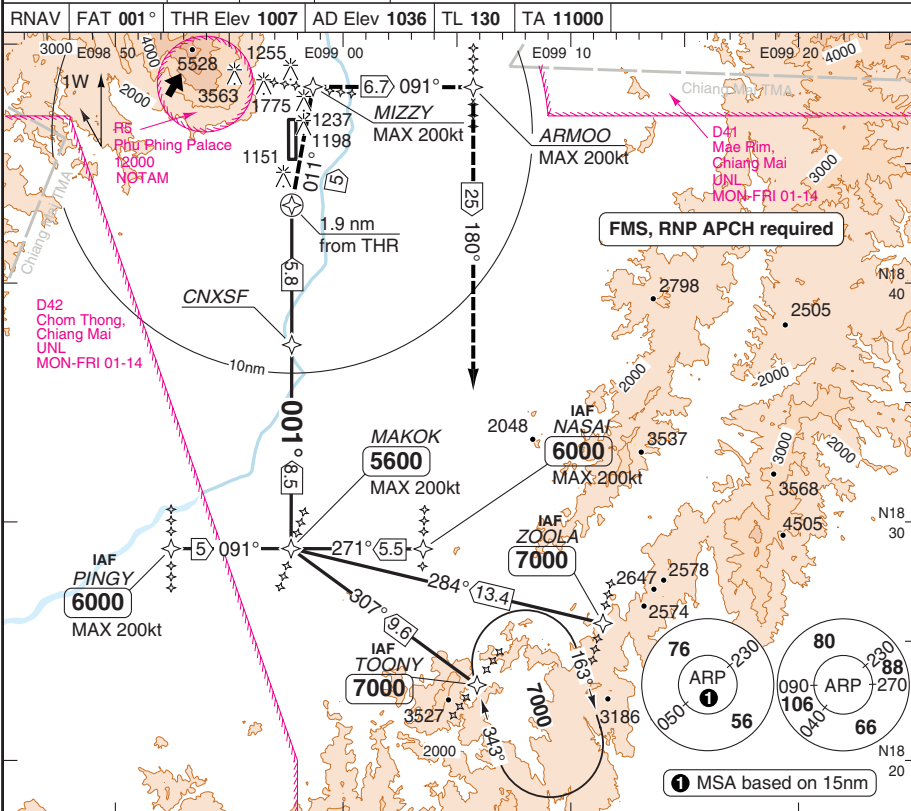
1 CAT A, B: 3min 30sec

ACFT	VOR	VOR b	Circling a	Circling a b	a East of AD b Non CDFA	LDA 3100x45 10170x147ft P 3°L/R (60)
A	1720 (714) 2900m	1720 (714) 3100m	2060 (1016) 2.9km	2060 (1016) 3.1km		
B	1740 (734) 3000m	1740 (734) 3200m	2060 (1016) 3.0km	2060 (1016) 3.2km		
C	1770 (764) 3200m	1770 (764) 3600m	2160 (1116) 3.2km	2160 (1116) 3.6km		
D	1790 (784) 3200m	1790 (784) 3600m	2160 (1116) 3.6km	2160 (1116) 3.6km		

© Navtech - vtcc03iaip00

RNAV (GNSS) RWY 36

Chiang Mai APP 129.6	TWR 118.1	GND 121.9	ATIS 127.2
RNAV FAT 001°	THR Elev 1007	AD Elev 1036	TL 130
TA 11000			



ACFT	LNAV	Circling ^a	^a East of AD					THR 36	3.0° ALT	LDA 3100x45
A	1660 (653)	1850 (814) 1.5km	7	8	9	10	7.7	3500	10170x147ft	
B	1500m	2020 (984) 1.6km	8	9	10	11	6	2960	P 3°L/R (60)	
C	1660 (653)	2220 (1184) 2.4km	9	10	11	12	5	2640	IALS 420	
D	2400m	2420 (1384) 3.6km	10	11	12	13	4	2330		
GS	80	100	120	140	160	14	3	2010		
ROD 3.0°	420	530	640	740	850	15	2	1690		
FAF-MAPt	4:21	3:29	2:54	2:29	2:10	16	1.9	1660		

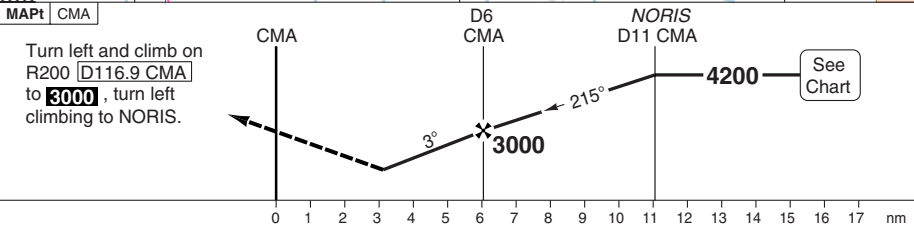
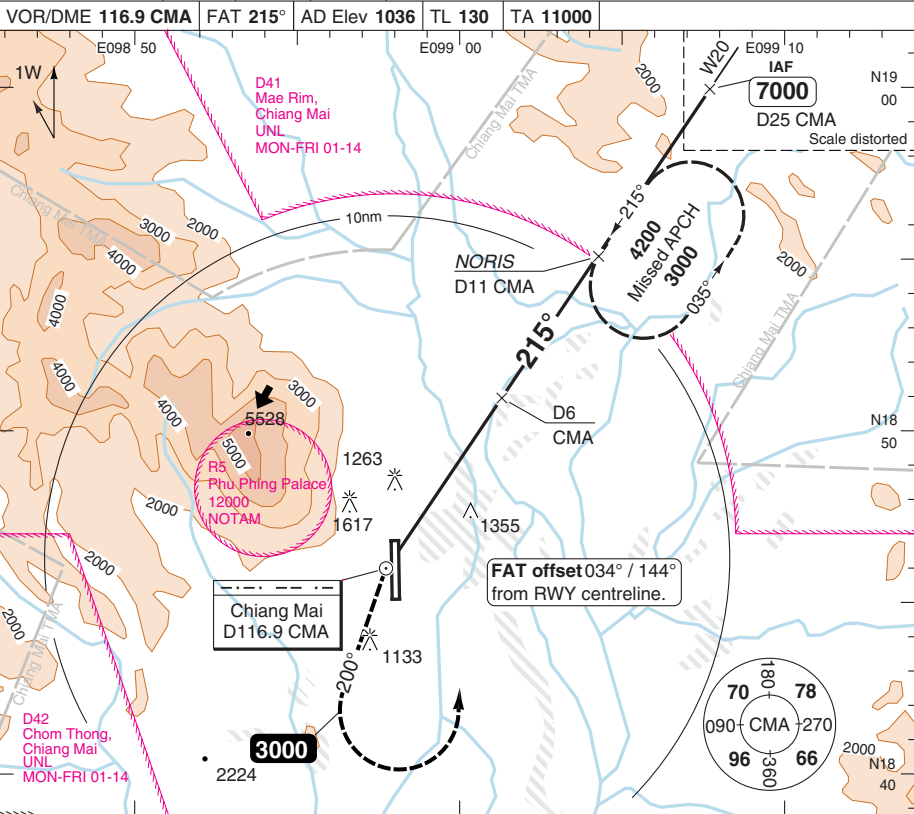
© Navtech - vtcc04iaip00
EU OPS

Change: New

THIS CHART IS A PART OF NAVIGRAPH NDAC AND IS INTENDED FOR FLIGHT SIMULATION USE ONLY

VOR RWY 18/36 VOR/DME

Chiang Mai APP 129.6	TWR 118.1	GND 121.9	ATIS 127.2
VOR/DME 116.9 CMA	FAT 215°	AD Elev 1036	TL 130
TA 11000			

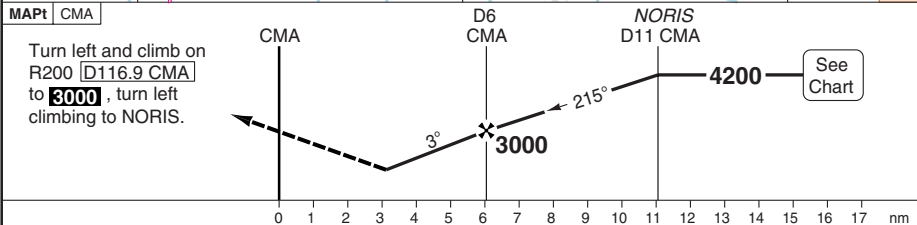
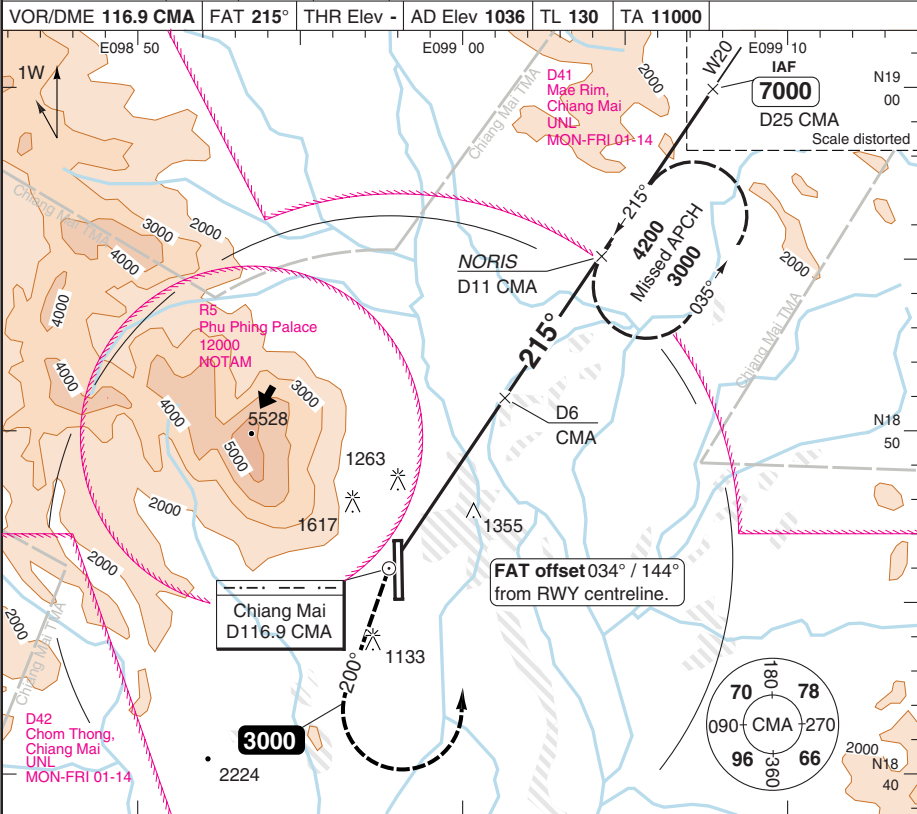


ACFT	VOR+DME Circling ^a
A	2060 (1015) 1.5km
B	2060 (1015) 1.6km
C	2160 (1115) 2.4km
D	2160 (1115) 3.6km

^a East of AD

VOR RWY 18/36 VOR/DME

Chiang Mai APP 129.6	TWR 118.1	GND 121.9	ATIS 127.2
VOR/DME 116.9 CMA	FAT 215°	THR Elev -	AD Elev 1036 TL 130 TA 11000



MAPt CMA	Turn left and climb on R200 D116.9 CMA to 3000 , turn left climbing to NORIS.	See Chart
ACFT	VOR+DME Circling ^a	^a East of AD
A	2050 (1015) 1.5km	
B	2050 (1015) 1.6km	
C	2150 (1115) 2.4km	
D	2150 (1115) 3.6km	

© Navtech - vtcc06iaip00
EU OPS

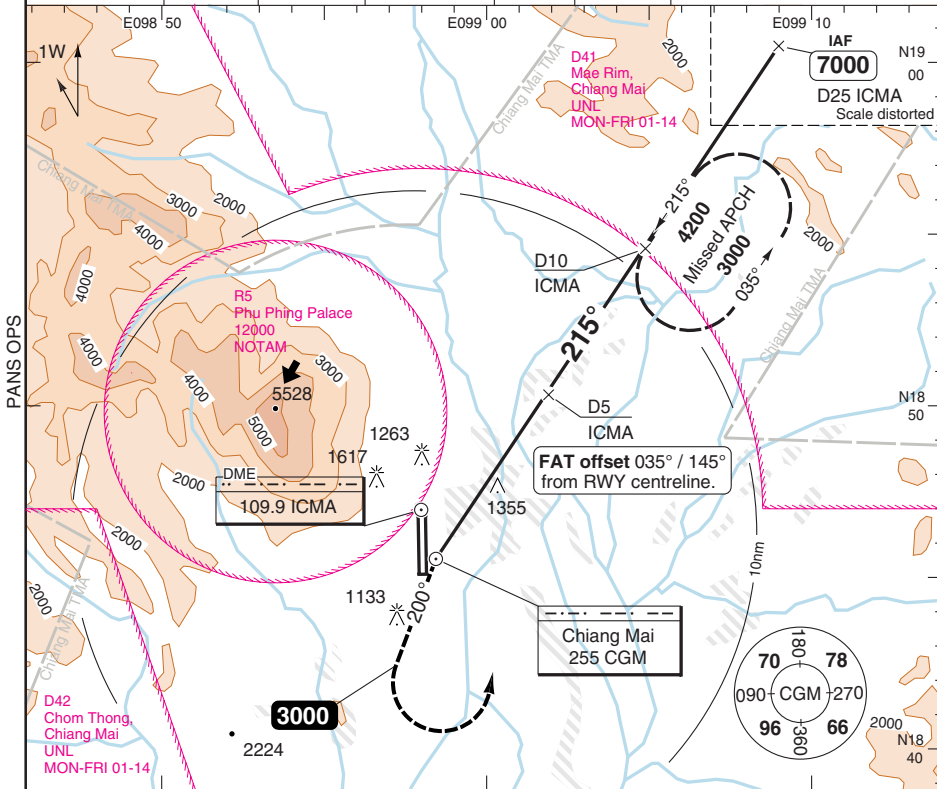
Change: New spec.

THIS CHART IS A PART OF NAVIGRAPH NDAC AND IS INTENDED FOR FLIGHT SIMULATION USE ONLY

NDB RWY 18/36 NDB/DME

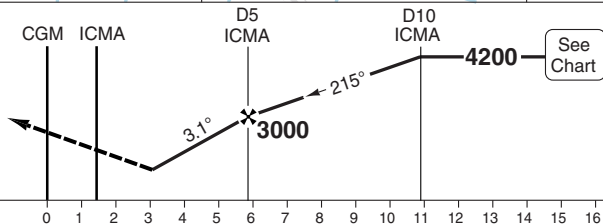
Chiang Mai APP 129.6	TWR 118.1	GND 121.9	ATIS 127.2
-------------------------	--------------	--------------	---------------

NDB 255 CGM	FAT 215°	THR Elev -	AD Elev 1036	TL 130	TA 11000
-------------	----------	------------	--------------	--------	----------



MAPt CGM

Turn left and climb on 200° to **3000**, turn left climbing to D10 **D109.9 ICMA**.



ACFT	NDB+DME Circling a
A	2050 (1015) 1.5km
B	2050 (1015) 1.6km
C	2150 (1115) 2.4km
D	2150 (1115) 3.6km

a East of AD

JAR-OPS Landing Minima

CHIANG MAI

The following Minima is for Public Transport aircraft and conforms to JAR-OPS1 regulations.

STRAIGHT-IN APPROACH		C				D			
R/W	Procedure	DA/ MDA QNH ft	DH/ MDH QFE ft	RVR m	RVR No ALS m	DA/ MDA QNH ft	DH/ MDH QFE ft	RVR m	RVR No ALS m
36	ILS/DME	1370	370	900	1200	1380	380	900	1200
36	LLZ/DME	1500	500	1600	2000	1500	500	1800	2000
36	VOR/DME	1780	770	1800	2000	1800	790	2000	2000
36	VOR	1780	770	1800	2000	1800	790	2000	2000
36	NDB/DME	1620	610	1600	2000	1620	610	1800	2000
36	NDB	1620	610	1600	2000	1620	610	1800	2000

Notes:

CIRCLING		C			D		
R/W	Procedure	MDA QNH ft	MDH QFE ft	Vis m	MDA QNH ft	MDH QFE ft	Vis m
-	VOR/DME, NDB/DME (1)	2160	1120	2400	2160	1120	3600
36	ILS/DME, LLZ/DME (1)	2200	1170	2400	2200	1170	3600
	All other procs (1)	2160	1120	2400	2160	1120	3600

Notes:

(1) East of AD only.

TAKE-OFF		C		D	
Runway	Facilities	RVR	Vis	RVR	Vis
18/36	REDL and/or RCL	400	-	400	-
18/36	Nil (Day only)	500	-	500	-

Notes:

JAR-OPS Landing Minima

CHIANG MAI

The following Minima is for Public Transport aircraft and conforms to JAR-OPS1 regulations.

STRAIGHT-IN APPROACH		A				B			
R/W	Procedure	DA/ MDA QNH ft	DH/ MDH QFE ft	RVR m	RVR No ALS m	DA/ MDA QNH ft	DH/ MDH QFE ft	RVR m	RVR No ALS m
36	ILS/DME	1350	350	900	1200	1360	360	900	1200
36	LLZ/DME	1500	500	1400	1500	1500	500	1500	1500
36	VOR/DME	1730	720	1500	1500	1750	740	1500	1500
36	VOR	1730	720	1500	1500	1750	740	1500	1500
36	NDB/DME	1620	610	1400	1500	1620	610	1500	1500
36	NDB	1620	610	1400	1500	1620	610	1500	1500

Notes:

CIRCLING		A			B		
R/W	Procedure	MDA QNH ft	MDH QFE ft	Vis m	MDA QNH ft	MDH QFE ft	Vis m
-	VOR/DME, NDB/DME (1)	2060	1020	1500	2060	1020	1600
36	ILS/DME, LLZ/DME (1)	2100	1070	1500	2100	1070	1600
	All other procs (1)	2060	1020	1500	2060	1020	1600

Notes:

(1) East of AD only.

TAKE-OFF		A		B	
Runway	Facilities	RVR	Vis	RVR	Vis
18/36	REDL and/or RCL	400	-	400	-
18/36	Nil (Day only)	500	-	500	-

Notes: