

VAGO

Airport information:

Country: India

City: GOA

Coordinates: N 15° 22.5', E073 49.6

Elevation: 150

Customs:

Fuel: 100, Jet A1

RFF: CAT 8

hours: (Navy) 23-16 & 16-23 O/R H24

Runways:

Runway 08

Takeoff length: 3430, Landing length: 3430

Runway 26

Takeoff length: 3330, Landing length: 3430

A. GENERAL

1. WARNING
 - 1.1. Due to lack of official information, use all charts with caution.
 - 1.2. Do not confuse parallel TWY with RWY 08/26.
 - 1.3. Nav aids are liable to interruption due to unreliable power supply.
2. TRAFFIC NOTES
 - 2.1. Expect delays due extensive MIL flying.
 - 2.2. Use MNM power in and out of all stands and when making 180° turns on RWY. B737 and above, use turningpads for 180° turns.
3. TWY RESTRICTION
 TWY N6 width 10M /32FT.
 TWY S4 width 15M /49FT.

B. ARRIVAL

1. LANDING RWY 26
 Vacate RWY via N5 or RWY end.

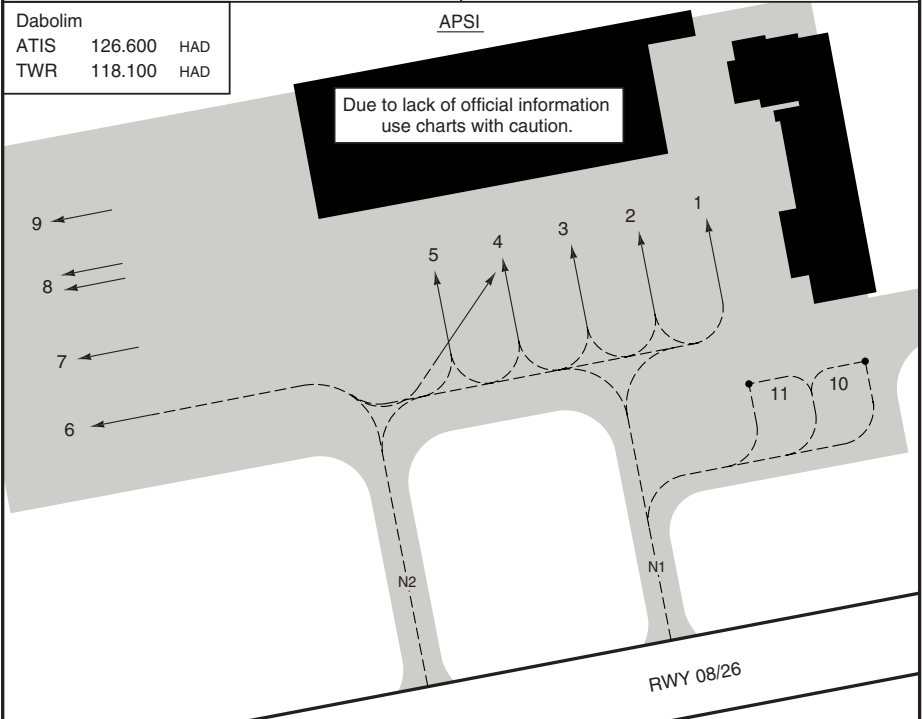
C. DEPARTURE

1. RWY RESTRICTION
 Arrester barrier installed at both ends of RWY. Line up 100M/328FT ahead of THR to avoid damage to barrier net.

Dabolim		
ATIS	126.600	HAD
TWR	118.100	HAD

APSI

Due to lack of official information use charts with caution.



© Navtech - vago01g_basa0 - W - P

Reverse side blank

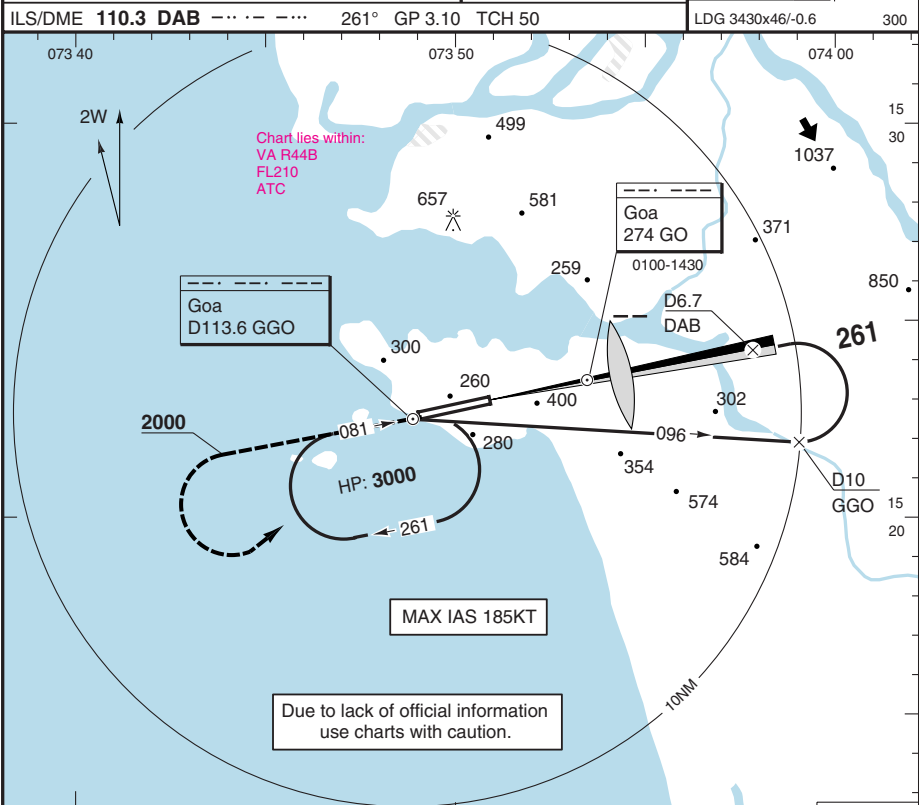
Change: New

NEW PANS - OPS

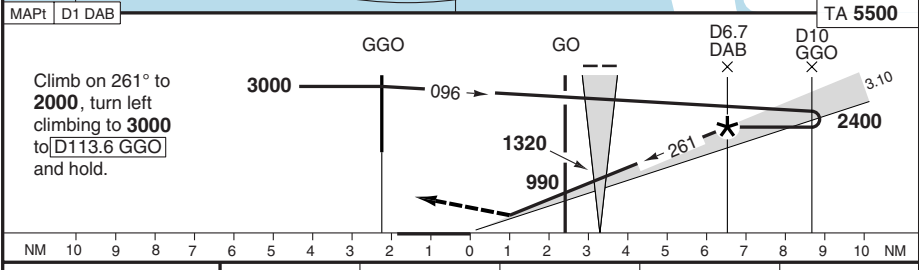
Dabolim
 ATIS 126.600 HAD
 APP 119.700 HAD
 TWR 118.100 HAD

GOI - VAGO **1** 16 MAR 04 (VOR/DME) ILS - 26

PAPI 3.10



© European Aeronautical Group - vago01ibasq0 - 200 - Y - P



LLZ+DME: FAF-MAP/ROD	90KT 3:48/500	100KT 3:25/550	120KT 2:51/660	140KT 2:26/770	160KT 2:08/880
DAB 3.1° ALT	JAA	ILS	LLZ+DME	To obtain RVR multiply VIS by:	
D6.6 - 2400	ACFT	C D	C D	Day 1.0 Night 1.5	
D6 - 2210	MIN	570 (378)	650 (467)		
D5 - 1880	RVR-KM	1.2	1.8 2.0		
D4 - 1550	APL U/S	1.2	2.0 2.0		
D3 - 1220					
D2 - 900					



NEW PANS - OPS

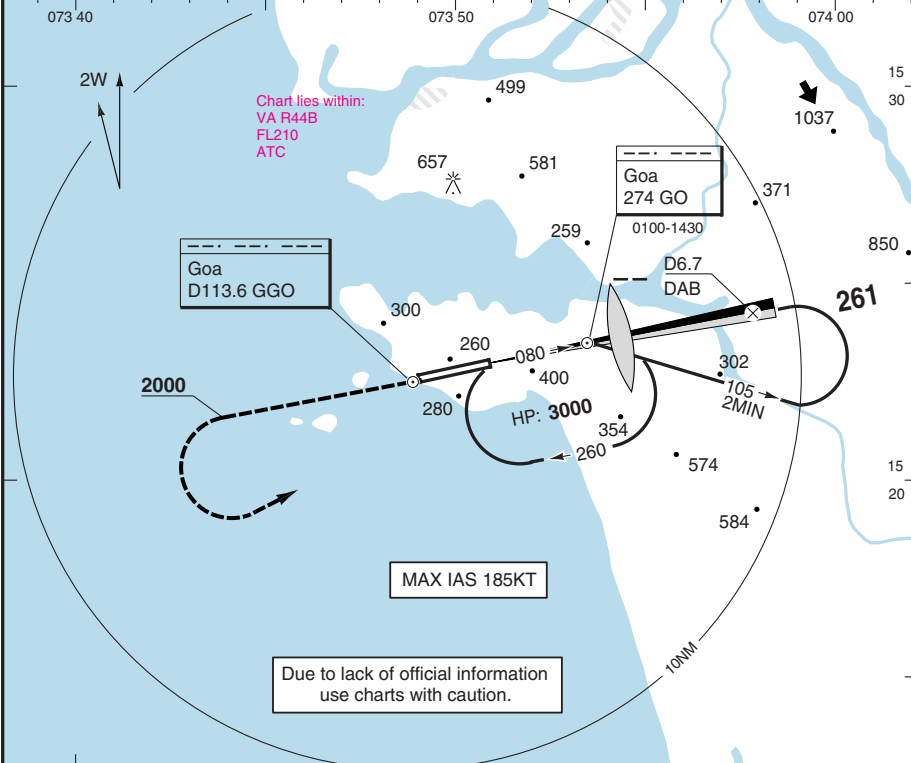
Dabolim
 ATIS 126.600 HAD
 APP 119.700 HAD
 TWR 118.100 HAD

GOI - VAGO **2** 16 MAR 04

(NDB) ILS - 26

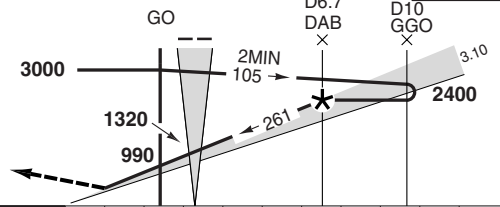
ILS/DME **110.3 DAB** --- · · · · · 261° GP 3.10 TCH 50

PAPI 3.10
 LDG 3430x46/-0.6 300



MAPt D1 DAB TA 5500

Climb on 261° to **2000**, turn left climbing to **3000** to **[274 GO]** and hold.



NM 10 9 8 7 6 5 4 3 2 1 0 1 2 3 4 5 6 7 8 9 10 NM

LLZ+DME: FAF-MAP/ROD 90KT 3:48/500 100KT 3:25/550 120KT 2:51/660 140KT 2:26/770 160KT 2:08/880

DAB	3.1° ALT	JAA	ILS	LLZ+DME
D6.6	- 2400	ACFT	C D	C D
D6	- 2210	MIN	570 (378)	650 (467)
D5	- 1880	RVR-KM	1.2	1.8 2.0
D4	- 1550	APL U/S	1.2	2.0 2.0
D3	- 1220			
D2	- 900			

To obtain RVR multiply VIS by:

Day	1.0	Night	1.5
-----	-----	-------	-----

© European Aeronautical Group - vago02ibasq0 - 200 - Y - P

THR ELEV 183 FT/AD ELEV 150 FT Change: New

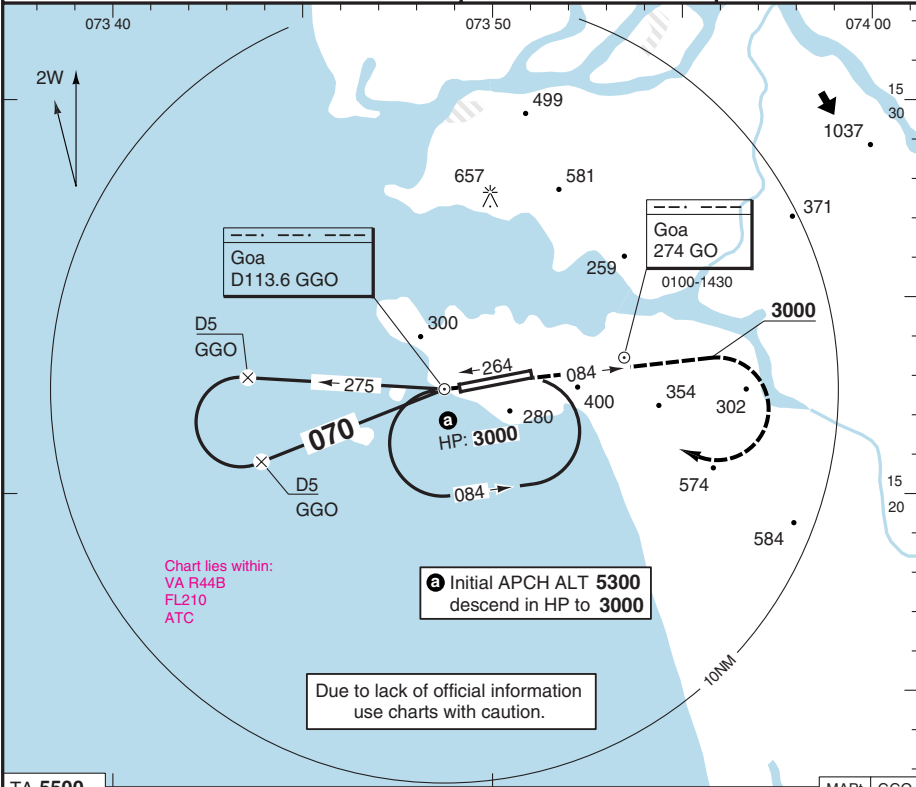
THIS CHART IS A PART OF NAVIGRAPH NDAC AND IS INTENDED FOR FLIGHT SIMULATION USE ONLY

GOA DABOLIM NAS INTL INDI A

GOI - VAGO **3** 16 MAR 04 **VOR - 08**

Dabolim
 ATIS 126.600 HAD
 APP 119.700 HAD
 TWR 118.100 HAD

PAPI 3.10
 LDG 3430x46/+0.6

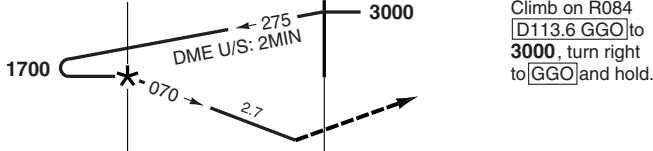


TA 5500

D5 GGO

GGO

MAP1 GGO



NM 11 10 9 8 7 6 5 4 3 2 1 0 1 2 3 4 5 6 7 8 9 10 NM

VOR+DME: FAF-MAP1/ROD	90KT 3:20/430	100KT 2:59/480	120KT 2:30/580	140KT 2:08/670	160KT 1:52/770
-----------------------	---------------	----------------	----------------	----------------	----------------

GGO 2.7° ALT	JAA	VOR+DME		VOR		To obtain RVR multiply VIS by:	
D5 - 1700	ACFT	C	D	C	D	Day 1.0	Night 1.5
D4 - 1420	MIN	600 (490)	700 (590)				
D3 - 1130	RVR-KM	1.8	2.0	1.8	2.0		
D2 - 850	APL U/S	2.0	2.0	2.0	2.0		



THR ELEV 110 FT/AD ELEV 150 FT Change: Note, TA, Renumbered

THIS CHART IS A PART OF NAVGRAPH NDAC AND IS INTENDED FOR FLIGHT SIMULATION USE ONLY

NEW PANS - OPS © European Aeronautical Group - Vago03i|basqo

GOA DABOLIM NAS INTERNATIONAL

GOI - VAGO

5

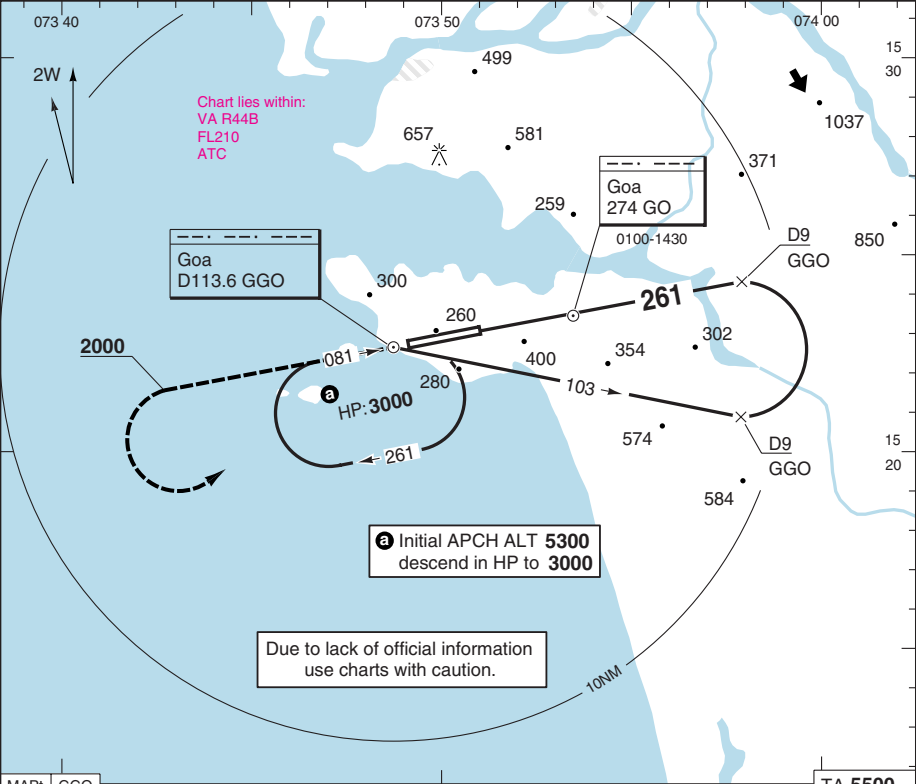
16 MAR 04

(VOR/DME) **VOR - 26**

NEW PANS - OPS

Dabolim
 ATIS 126.600 HAD
 APP 119.700 HAD
 TWR 118.100 HAD

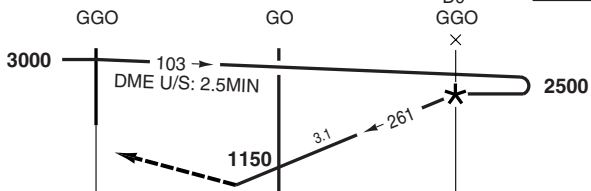
PAPI 3.10
 LDG 3430x46/-0.6



MAPt GGO

TA 5500

Climb on R261
 [D113.6 GGO] to
 2000, turn left
 climbing to 3000
 to [GGO] and hold.



NM 10 9 8 7 6 5 4 3 2 1 0 1 2 3 4 5 6 7 8 9 10 NM

VOR+DME+NDB: ROD	90KT	560	100KT	620	120KT	740	140KT	860	160KT	980
VOR+NDB: ROD										

GGO 3.5° ALT	JAA	VOR+DME+NDB		VOR+NDB		To obtain RVR multiply VIS by:
D8.2 - 2500	ACFT	C	D	C	D	
D7 - 2070	MIN	650 (467)		700 (517)		
D6 - 1700	RVR-KM APL U/S	1.8	2.0	1.8	2.0	
D5 - 1340		2.0	2.0	2.0	2.0	
D4 - 970						

THR ELEV 183 FT/AD ELEV 150 FT Change: Note, TA, Renumbered , Min

THIS CHART IS A PART OF NAVIGRAPH NDAC AND IS INTENDED FOR FLIGHT SIMULATION USE ONLY

© European Aeronautical Group - vago05i|basqo

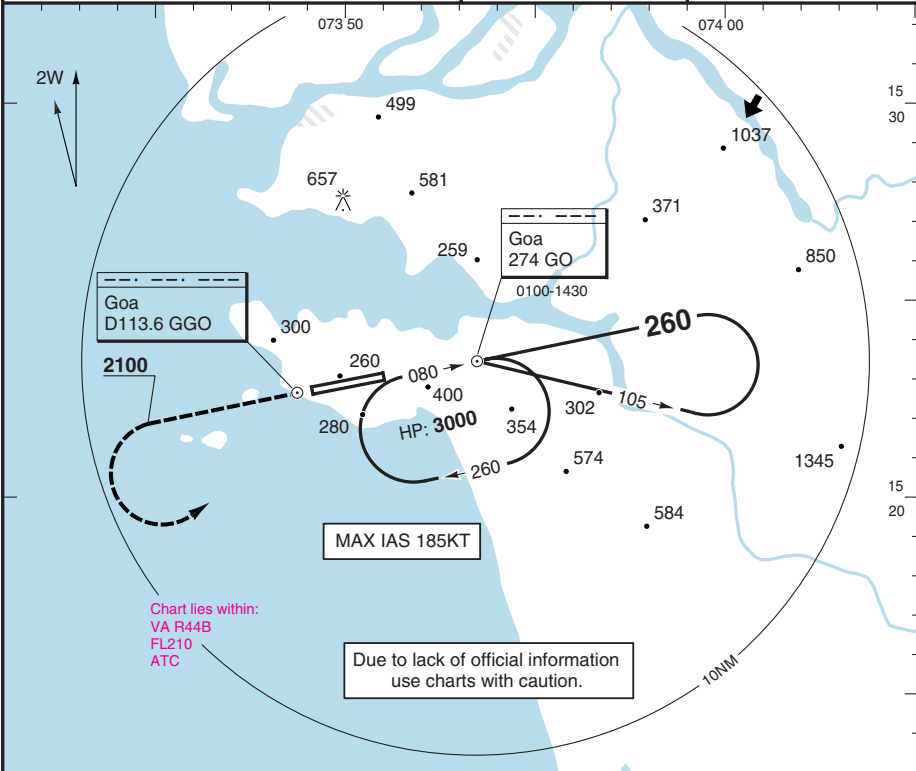
NEW PANS - OPS

Dabolim
 ATIS 126.600 HAD
 APP 119.700 HAD
 TWR 118.100 HAD

GOI - VAGO **6** 16 MAR 04

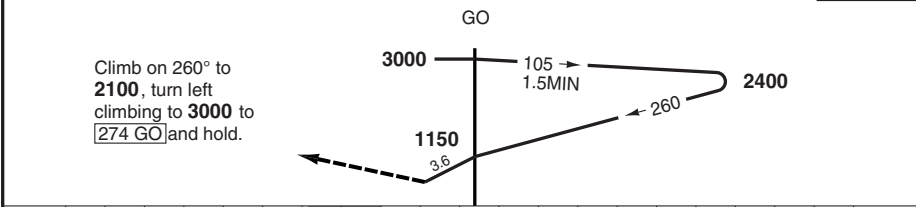
NDB - 26

GOA
 D
 A
 B
 O
 L
 I
 M
 N
 A
 S
 I
 N
 D
 I
 A



© European Aeronautical Group - vago06i basq0 - 200 - Y - P

MAPt THR TA 5500



NM 8 7 6 5 4 3 2 1 0 1 2 3 4 5 6 7 8 9 10 11 12 NM

NDB: GO-MAPt/ROD 90KT 1:40/560 100KT 1:30/620 120KT 1:15/740 140KT 1:04/860 160KT 0:56/980

JAA	NDB		To obtain RVR multiply VIS by:
ACFT	C	D	
MIN	650 (467)		Day 1.0 Night 1.5
RVR-KM	1.8	2.0	
APL U/S	2.0	2.0	

THR ELEV 183 FT/AD ELEV 150 FT Change: Note. TA, Renumbered

THIS CHART IS A PART OF NAVIGRAPH NDAC AND IS INTENDED FOR FLIGHT SIMULATION USE ONLY

Reverse side blank