

Airport information:

Country: Belarus

City: KALININGRAD

Coordinates: N 54° 53.4', E020 35.7

Elevation: 43

Customs: Customs

Fuel: TS-1 (equivalent to Jet A1)

RFF: CAT 7

hours: (S) 0400-2100, (W) +1hr

Runways:

Runway 06

Takeoff length: 2500, Landing length: 2500

Runway 24

Takeoff length: 2500, Landing length: 2500

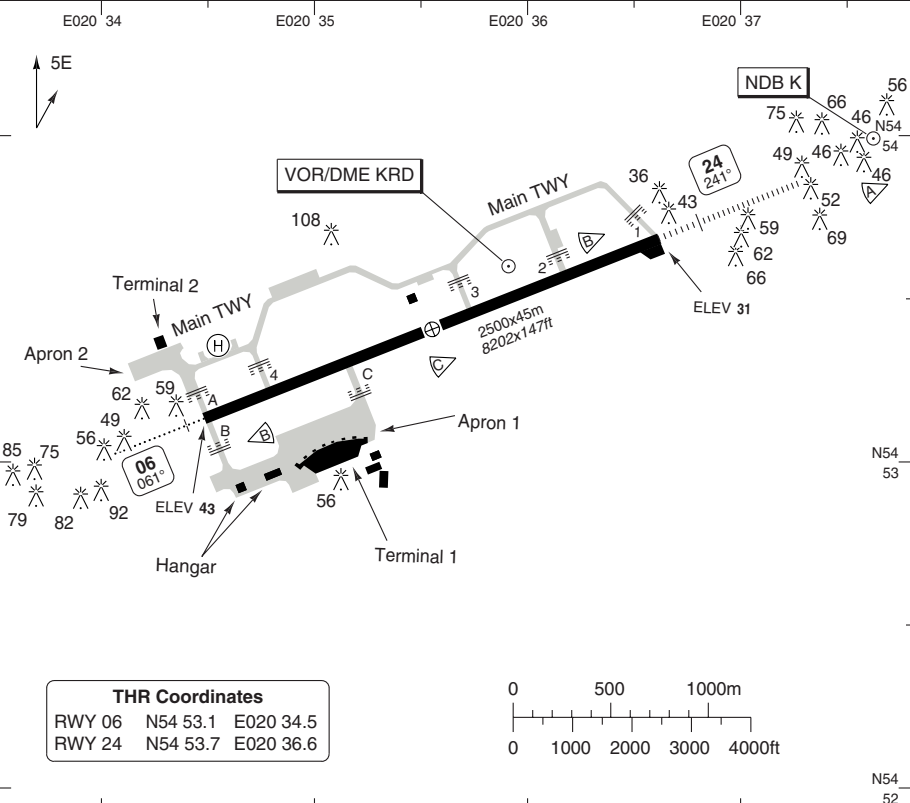
AERODROME

Khrabrovo KALININGRAD

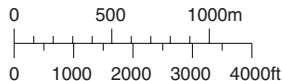
10 - 1

Kaliningrad GND 126.0	TWR 129.425	RAD 126.0	ATIS 122.475	Reserve 128.5
--------------------------	----------------	--------------	-----------------	------------------

AD Elev 43	ARP: N54 53.4 E020 35.6	RFF: CAT 7	AD HR: H24
------------	-------------------------	------------	------------



THR Coordinates		
RWY 06	N54 53.1	E020 34.5
RWY 24	N54 53.7	E020 36.6



RWY	Slope	TORA m/ft	LDA m/ft	ALS	REDL	Additional
06	-0.2	2500 / 8202	2500 / 8202	L-E ①	H	P 3°
24	+0.2	2500 / 8202	2500 / 8202	H-D ②	H	P 2.7°

① 480m. ② No EFAS.

EU OPS TAKE OFF MINIMA

RWY	Facilities	RVR			
		A	B	C	D
06/24	RCL (day only) or RCL + REDL	400m			
	NIL (day only)	500m			

© Navtech - umkk01laorgo

Change: ARP, PAPI, Var, THR cord, QFU

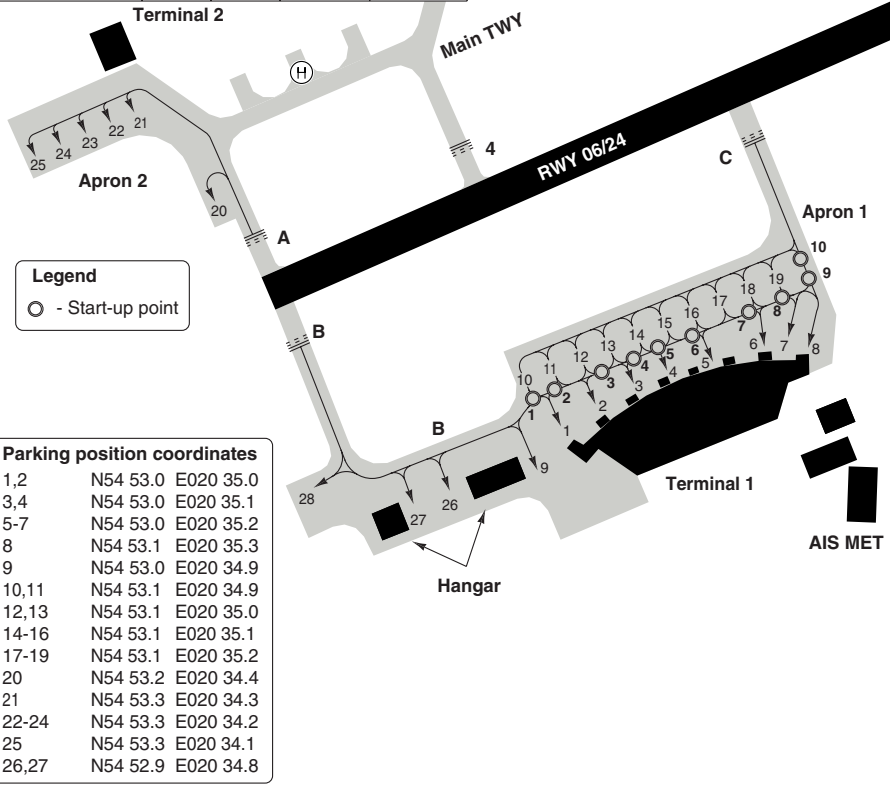
THIS CHART IS A PART OF NAVIGRAPH NDAC AND IS INTENDED FOR FLIGHT SIMULATION USE ONLY

AERODROME

Khrabrovo **KALININGRAD**

10 - 2

Kaliningrad GND	TWR	RAD	ATIS	Reserve
126.0	129.425	126.0	122.475	128.5



GENERAL INFORMATION

1. ALTIMETER SETTING

Trans Hgt and ATC clearances are in metres QFE (relative to THR).QNH available on request.Standard ICAO FL (feet) system

2. WARNING

Bird hazard.

3. NOISE ABATEMENT PROCEDURE

ICAO standard NAP (NADP 1 or 2) applies.

4. TWY RESTRICTION

- 4.1. Main TWY, TWY A, 1-4 width 14m/46ft.
- 4.2. Aircraft with wingspan more than 44m/144ft are prohibited from taxiing under own engine power from TWY C to start-up point 8.

4.3. Aircraft with wingspan more than 27m/89ft are prohibited from taxiing from stand 10 to central taxi route on apron.

4.4. Taxiing into stands 21-25 shall be carried out by towing.

4.5. Parking on stands 10-19 shall be carried out by GND instruction.

4.6. Taxiing of Tu-154, Tu-134, Yak-42, Il-18, An-12 ACFT along TWY A shall be carried out at reduced speed, along the taxi guide line, with the crew's good look out; An-12, Il-18 ACFT - under inner engines power.

4.7. There is turnpad with an radius of 17m/56ft between stand 20 and 21.

GENERAL

Khrabrovo **KALININGRAD**

10-0-1

WEF 17 NOV 11

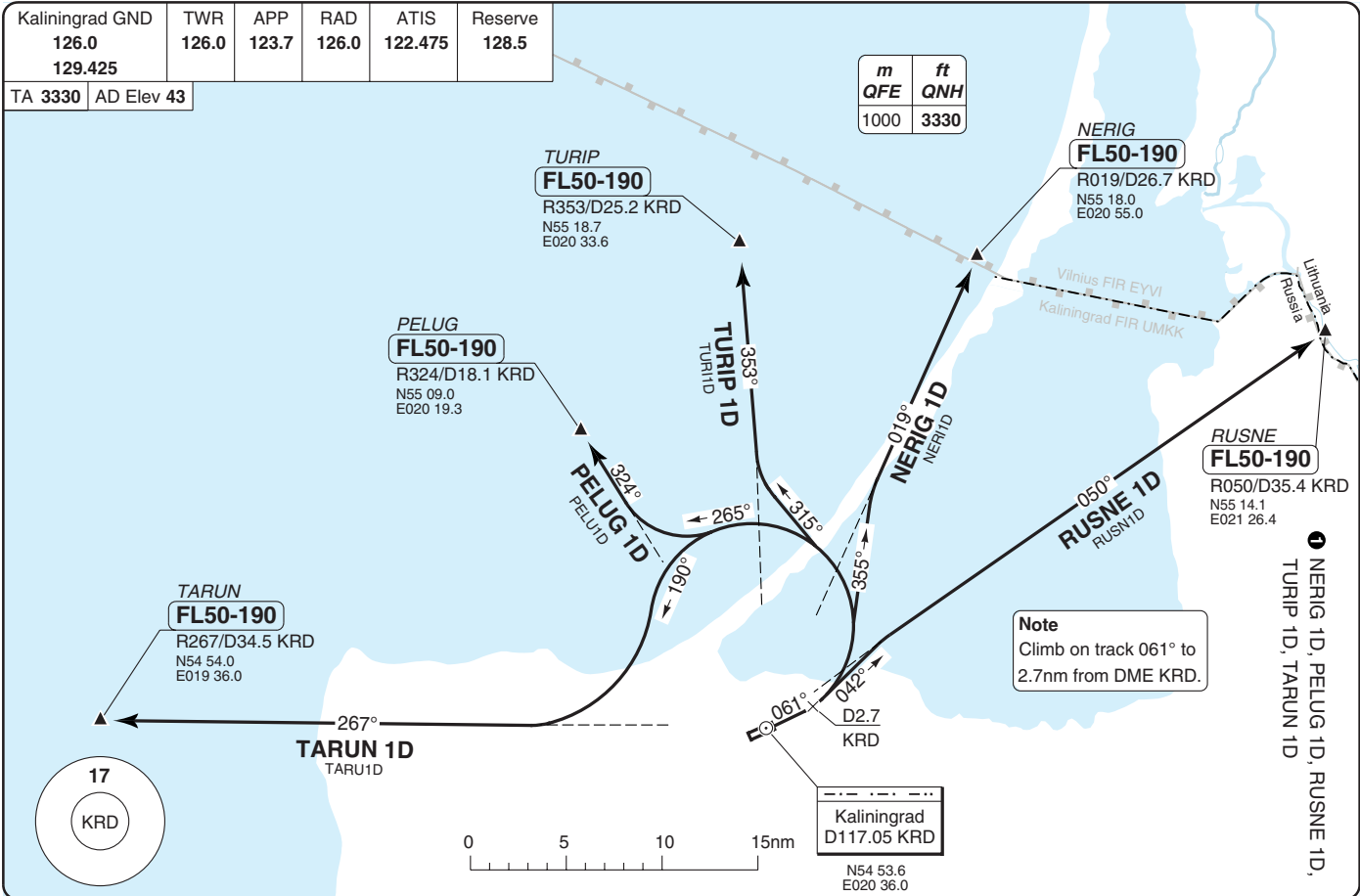
1. The vertical separation system at this aerodrome will be changed to Table a) of ICAO Appendix 3, Annex 2, expressed in Feet, as shown in the table.
2. Clearances below the Trans Alt/Trans Lev will continue to be in metres QFE.
3. Any Flight Levels shown on the charts for this aerodrome will change to the nearest equivalent shown below:

True track angle	
000° to 179°	180° to 359°
FL	FL
010	020
030	040
050	060
070	080
090	100
110	120
130	140
150	160
170	180
190	200
210	220
230	240
250	260
270	280
290	300
310	320
330	340
350	360
370	380
390	400
410	430

Kaliningrad GND	TWR	APP	RAD	ATIS	Reserve
126.0	126.0	123.7	126.0	122.475	128.5
129.425					

TA 3330 AD Elev 43

m	ft
QFE	QNH
1000	3330



TURIP
FL50-190
R353/D25.2 KRD
N55 18.7
E020 33.6

PELUG
FL50-190
R324/D18.1 KRD
N55 09.0
E020 19.3

TARUN
FL50-190
R267/D34.5 KRD
N54 54.0
E019 36.0

NERIG
FL50-190
R019/D26.7 KRD
N55 18.0
E020 55.0

RUSNE
FL50-190
R050/D35.4 KRD
N55 14.1
E021 26.4

Kaliningrad
D117.05 KRD
N54 53.6
E020 36.0

Note
Climb on track 061° to
2.7nm from DME KRD.

SID Rwy 06

30 - 1 | 16 NOV 11

Russia - UMKK / KGD
Khrabrovo **KALININGRAD**

NERIG 1D, PELUG 1D, RUSNE 1D,
TURIP 1D, TARUN 1D

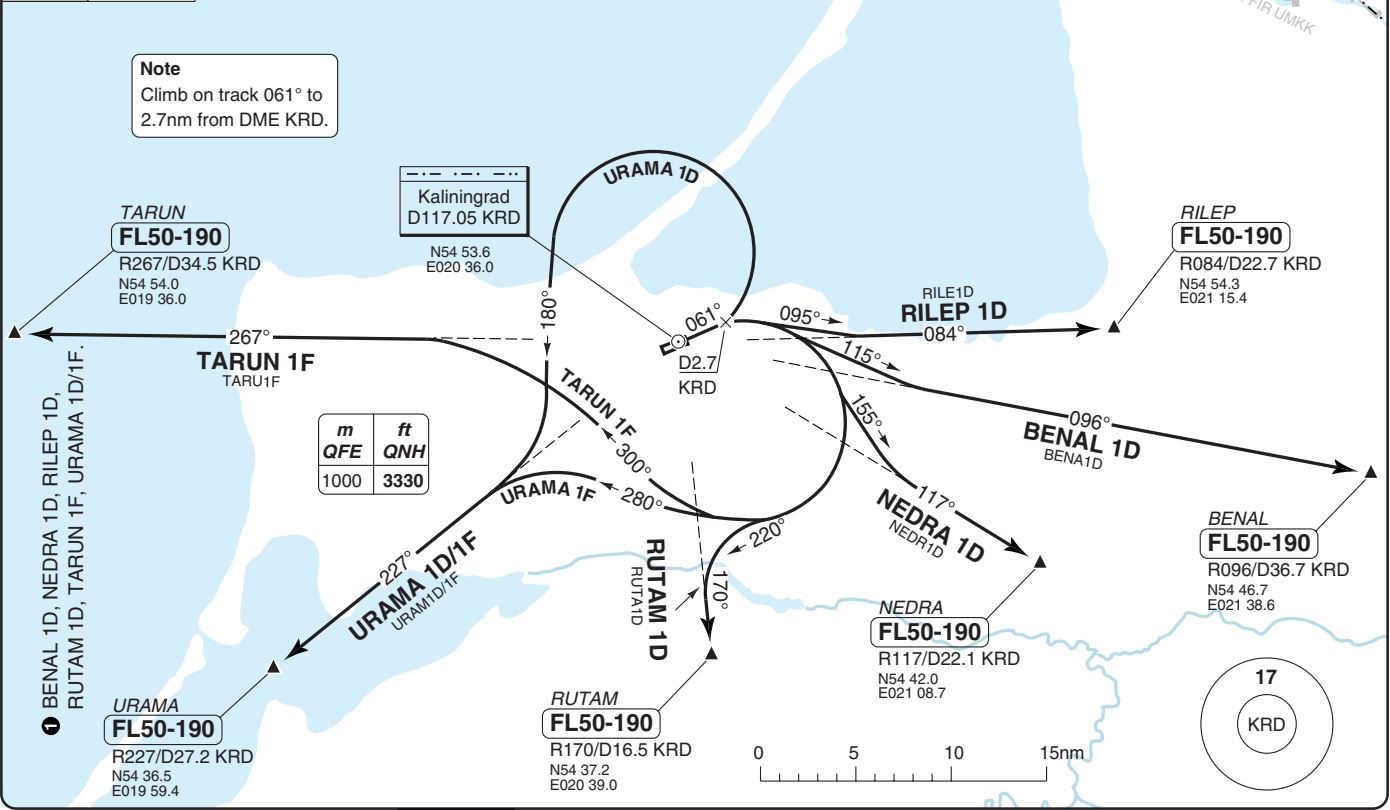
THIS CHART IS A PART OF NAVIGRAPH NDAC AND IS INTENDED FOR FLIGHT SIMULATION USE ONLY

Change: New

Kaliningrad GND	TWR	APP	RAD	ATIS	Reserve
126.0	126.0	123.7	126.0	122.475	128.5
129.425					

TA 3330 AD Elev 43

Note
Climb on track 061° to 2.7nm from DME KRD.



Kaliningrad GND	TWR	APP	RAD	ATIS	Reserve
126.0	126.0	123.7	126.0	122.475	128.5
129.425					

TA 3320 AD Elev 43

m	ft
QFE	QNH
1000	3320

TURIP
FL50-190
R353/D25.2 KRD
N55 18.7
E020 33.6

NERIG
FL50-190
R019/D26.7 KRD
N55 18.0
E020 55.0

PELUG
FL50-190
R324/D18.1 KRD
N55 09.0
E020 19.3

RUSNE
FL50-190
R050/D35.4 KRD
N55 14.1
E021 26.4

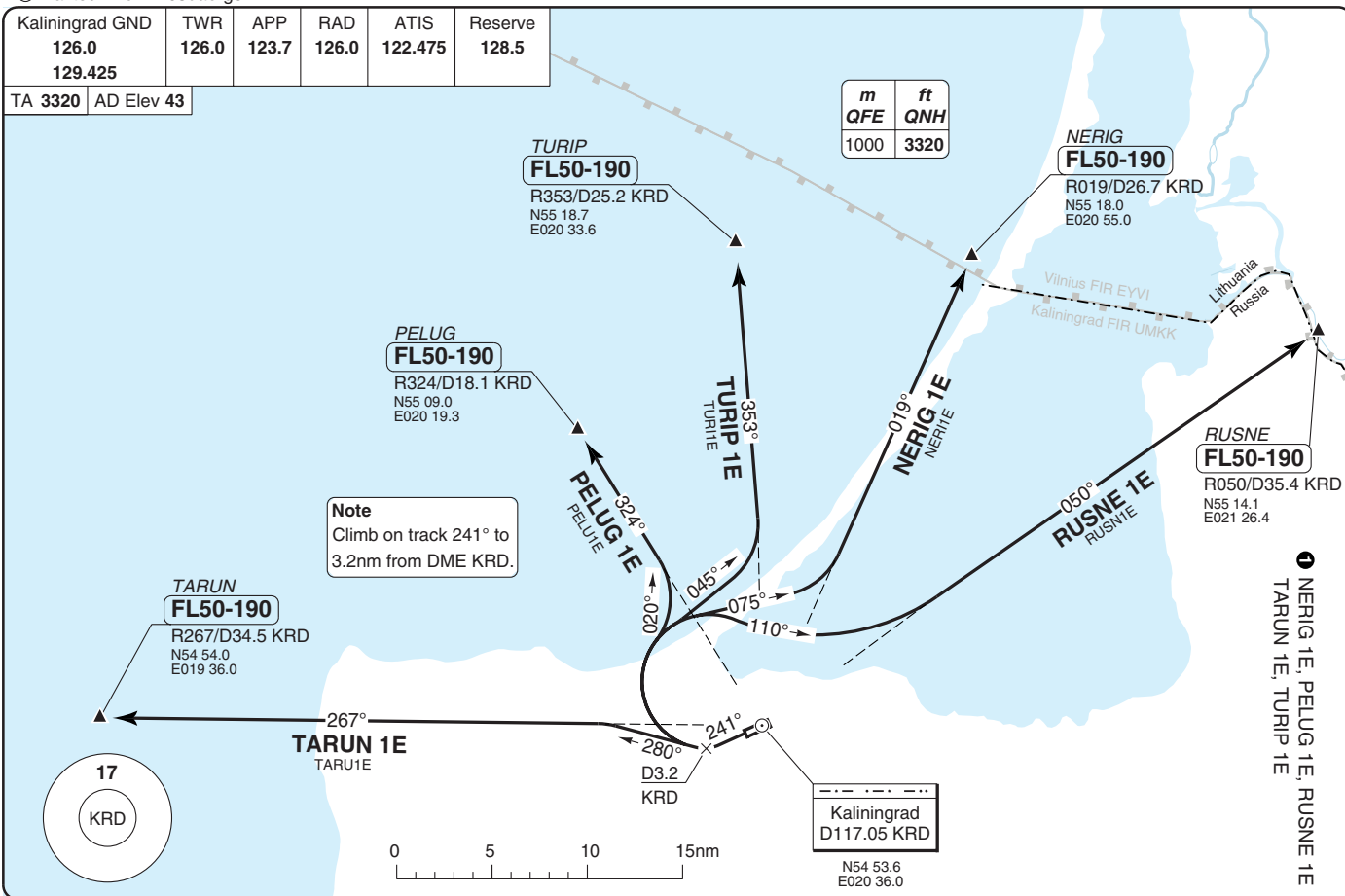
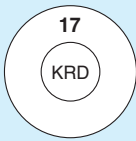
TARUN
FL50-190
R267/D34.5 KRD
N54 54.0
E019 36.0

Note
Climb on track 241° to 3.2nm from DME KRD.

TARUN 1E
TARU1E

Kaliningrad
D117.05 KRD

N54 53.6
E020 36.0



SID Rwy 24

30 - 3 | 16 NOV 11

Russia - UMKK / KGD
Khrabrovo **KALININGRAD**

NERIG 1E; PELUG 1E; RUSNE 1E
TARUN 1E, TURIP 1E

THIS CHART IS A PART OF NAVIGRAPH NDAC AND IS INTENDED FOR FLIGHT SIMULATION USE ONLY

Change: New

Kaliningrad GND	TWR	APP	RAD	ATIS	Reserve
126.0	126.0	123.7	126.0	122.475	128.5
129.425					

TA 3320 AD Elev 43

m	ft
QFE	QNH
1000	3320

● BENAL 1G, NEDRA 1G, RUTAM 1G, RILEP 1G, RUSNE 1G, URAMA 1G.

URAMA
FL50-190
R227/D27.2 KRD
N54 36.5
E019 59.4

URAMA 1G
URAMA1G

RUTAM
FL50-190
R170/D16.5 KRD
N54 37.2
E020 39.0

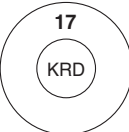
RUTAM 1G
RUTA1G

Kaliningrad
D117.05 KRD
N54 53.6
E020 36.0

NEDRA
FL50-190
R117/D22.1 KRD
N54 42.0
E021 08.7

NEDRA 1G
NEDR1G

RILEP 1G



Note
Climb on track 241° to 3.2nm from DME KRD.

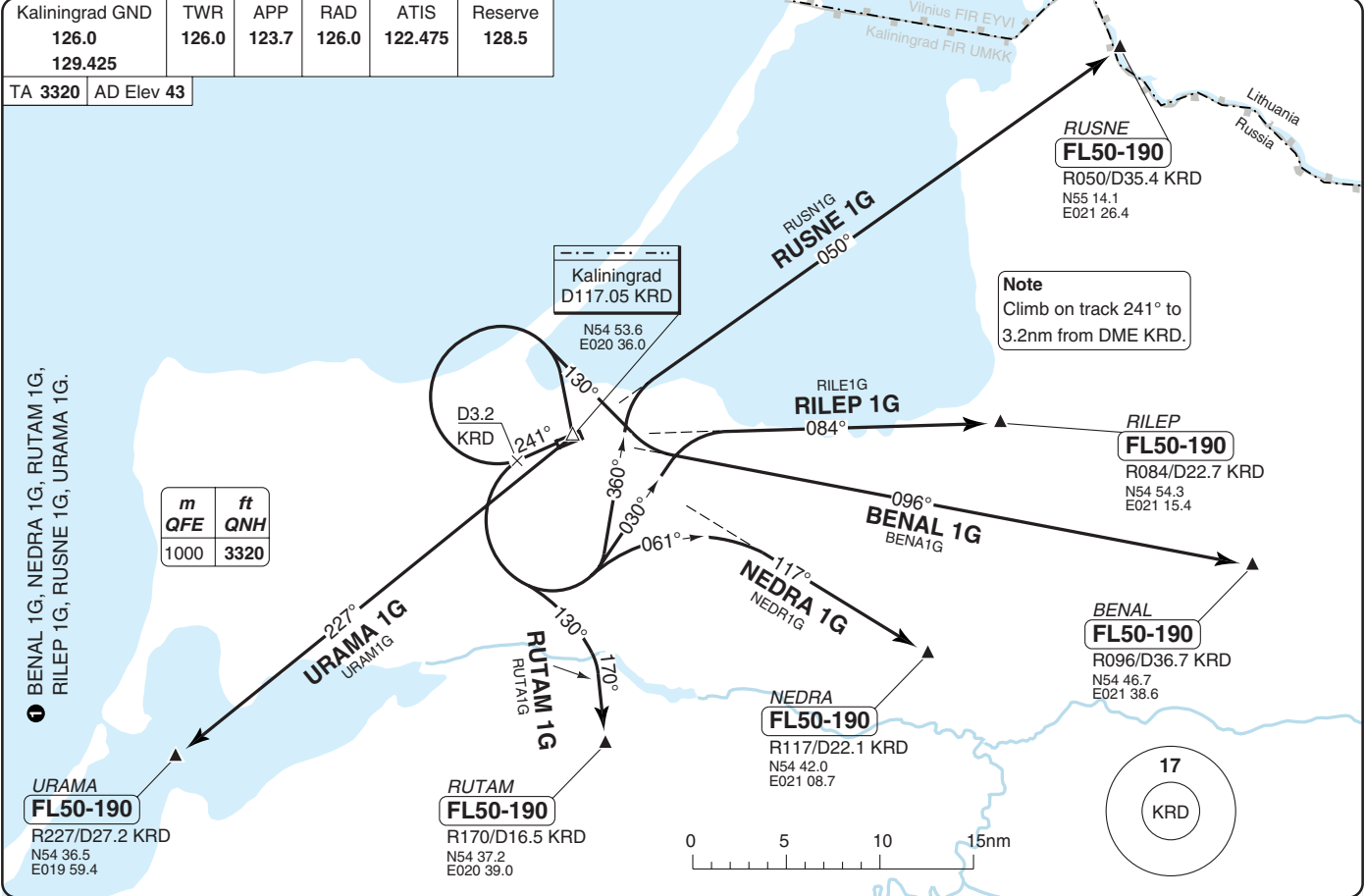
RUSNE
FL50-190
R050/D35.4 KRD
N55 14.1
E021 26.4

RUSNE 1G
RUSN1G

RILEP
FL50-190
R084/D22.7 KRD
N54 54.3
E021 15.4

BENAL 1G
BENA1G

BENAL
FL50-190
R096/D36.7 KRD
N54 46.7
E021 38.6

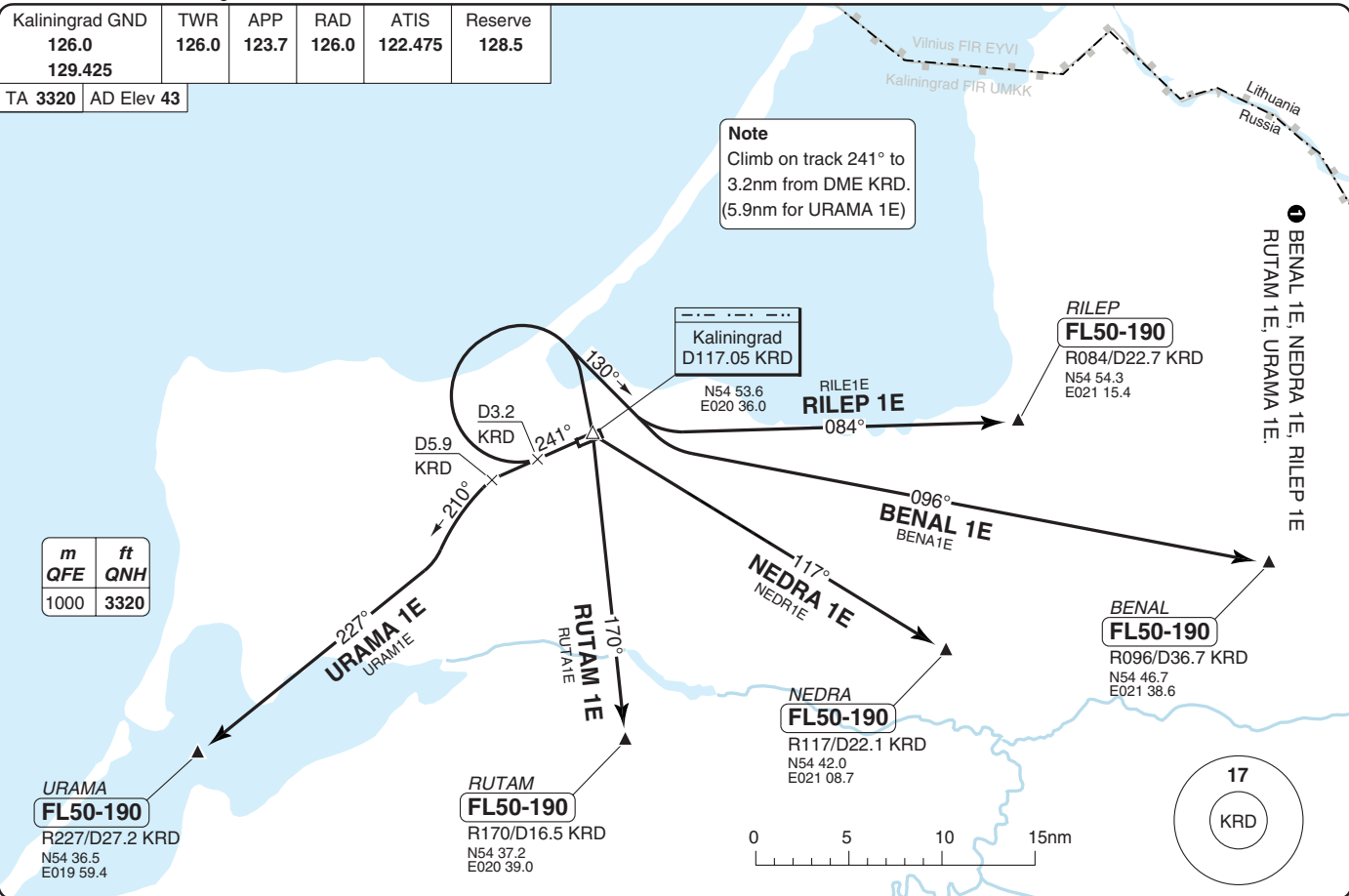


Kaliningrad GND	TWR	APP	RAD	ATIS	Reserve
126.0	126.0	123.7	126.0	122.475	128.5
129.425					

TA 3320 AD Elev 43

m	ft
QFE	QNH
1000	3320

Note
Climb on track 241° to 3.2nm from DME KR D.
(5.9nm for URAMA 1E)



SID Rwy 24

30 - 5 16 NOV 11

Khrabrovo KALININGRAD
Russia - UMKK / KG D

30 - 5

THIS CHART IS A PART OF NAVIGRAPH NDAC AND IS INTENDED FOR FLIGHT SIMULATION USE ONLY

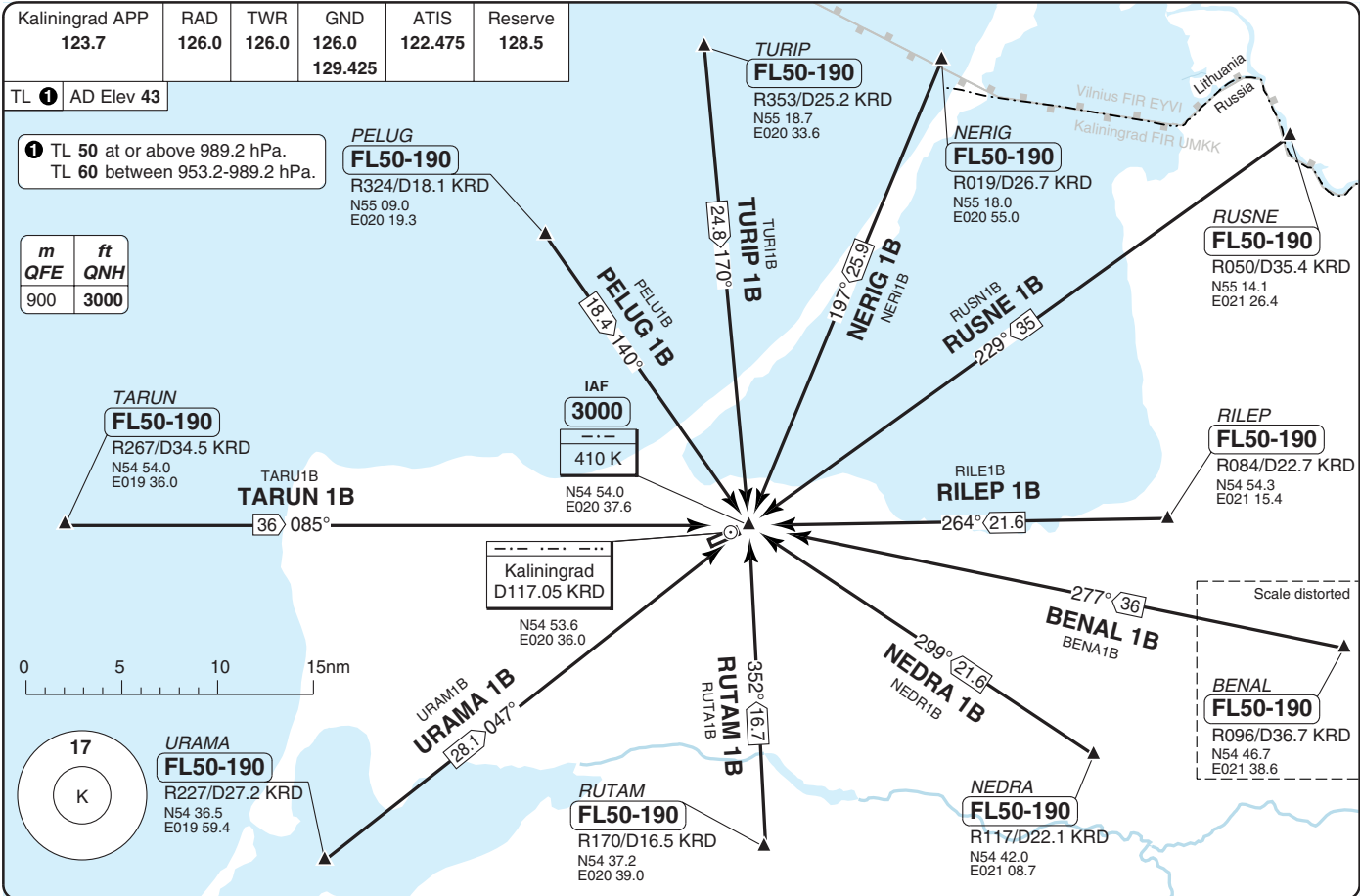
Reverse side blank

Kaliningrad APP 123.7	RAD 126.0	TWR 126.0	GND 126.0 129.425	ATIS 122.475	Reserve 128.5
--------------------------	--------------	--------------	-------------------------	-----------------	------------------

TL 1 AD Elev 43

1 TL 50 at or above 989.2 hPa.
TL 60 between 953.2-989.2 hPa.

m	ft
QFE	QNH
900	3000



STAR RWY 06 NDB

40 - 1 16 NOV 11

Khhabrovo KALININGRAD

Russia - UMKK / KGD

THIS CHART IS A PART OF NAVIGRAPH NDAC AND IS INTENDED FOR FLIGHT SIMULATION USE ONLY

Change: New

Scale distorted

BENAL
FL50-190
R096/D36.7 KRD
N54 46.7
E021 38.6

Kaliningrad
D117.05 KRD

IAF
3000
410 K
N54 54.0
E020 37.6

0 5 10 15nm

17
K

URAMA
FL50-190
R227/D27.2 KRD
N54 36.5
E019 59.4

URAMA 1B
28.1° 047°

RUTAM
FL50-190
R170/D16.5 KRD
N54 37.2
E020 39.0

RUTAM 1B
352° 16.7°

NEDRA
FL50-190
R117/D22.1 KRD
N54 42.0
E021 08.7

NEDRA 1B
290° 21.6°

BENAL 1B
277° 36°

RILEP
FL50-190
R084/D22.7 KRD
N54 54.3
E021 15.4

RILEP 1B
264° 21.6°

RUSNE
FL50-190
R050/D35.4 KRD
N55 14.1
E021 26.4

RUSNE 1B
229° 35°

NERIG
FL50-190
R019/D26.7 KRD
N55 18.0
E020 55.0

NERIG 1B
197° 25.0°

TURIP
FL50-190
R353/D25.2 KRD
N55 18.7
E020 33.6

TURIP 1B
24.8° 170°

PELUG
FL50-190
R324/D18.1 KRD
N55 09.0
E020 19.3

PELUG 1B
18.4° 140°

TARUN
FL50-190
R267/D34.5 KRD
N54 54.0
E019 36.0

TARUN 1B
36° 085°

Kaliningrad APP 123.7	RAD 126.0	TWR 126.0	GND 126.0	ATIS 122.475	Reserve 128.5
--------------------------	--------------	--------------	--------------	-----------------	------------------

TL 1 AD Elev 43

1 TL 50 at or above 989.2 hPa.
TL 60 between 953.2-989.2 hPa.

m	ft
QFE	QNH
900	2990

PELUG
FL50-190
R324/D18.1 KR
N55 09.0
E020 19.3

TURIP
FL50-190
R353/D25.2 KR
N55 18.7
E020 33.6

NERIG
FL50-190
R019/D26.7 KR
N55 18.0
E020 55.0

RUSNE
FL50-190
R050/D35.4 KR
N55 14.1
E021 26.4

RILEP
FL50-190
R084/D22.7 KR
N54 54.3
E021 15.4

BENAL
FL50-190
R096/D36.7 KR
N54 46.7
E021 38.6

RILE1A
RILEP 1A
266°/20.5

BENAL 1A
BENA1A
278°/35

NEDRA 1A
NEDR1A
303°/20.5

NEDRA
FL50-190
R117/D22.1 KR
N54 42.0
E021 08.7

RUTAM 1A
RUTA1A
357°/17.3

RUTAM
FL50-190
R170/D16.5 KR
N54 37.2
E020 39.0

URAMA 1A
URAM1A
29.7°/04.7

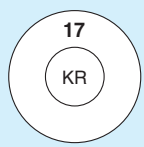
URAMA
FL50-190
R227/D27.2 KR
N54 36.5
E019 59.4

TARUN 1A
TARU1A
37°/08.4

TARUN
FL50-190
R267/D34.5 KR
N54 54.0
E019 36.0

IAF
2990
840 KR
N54 54.6
E020 40.3

Kaliningrad
D117.05 KR
N54 53.6
E020 36.0



Kaliningrad APP	RAD	TWR	GND	ATIS	Reserve
123.7	126.0	126.0	126.0	122.475	128.5
			129.425		

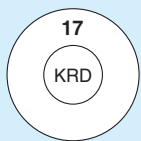
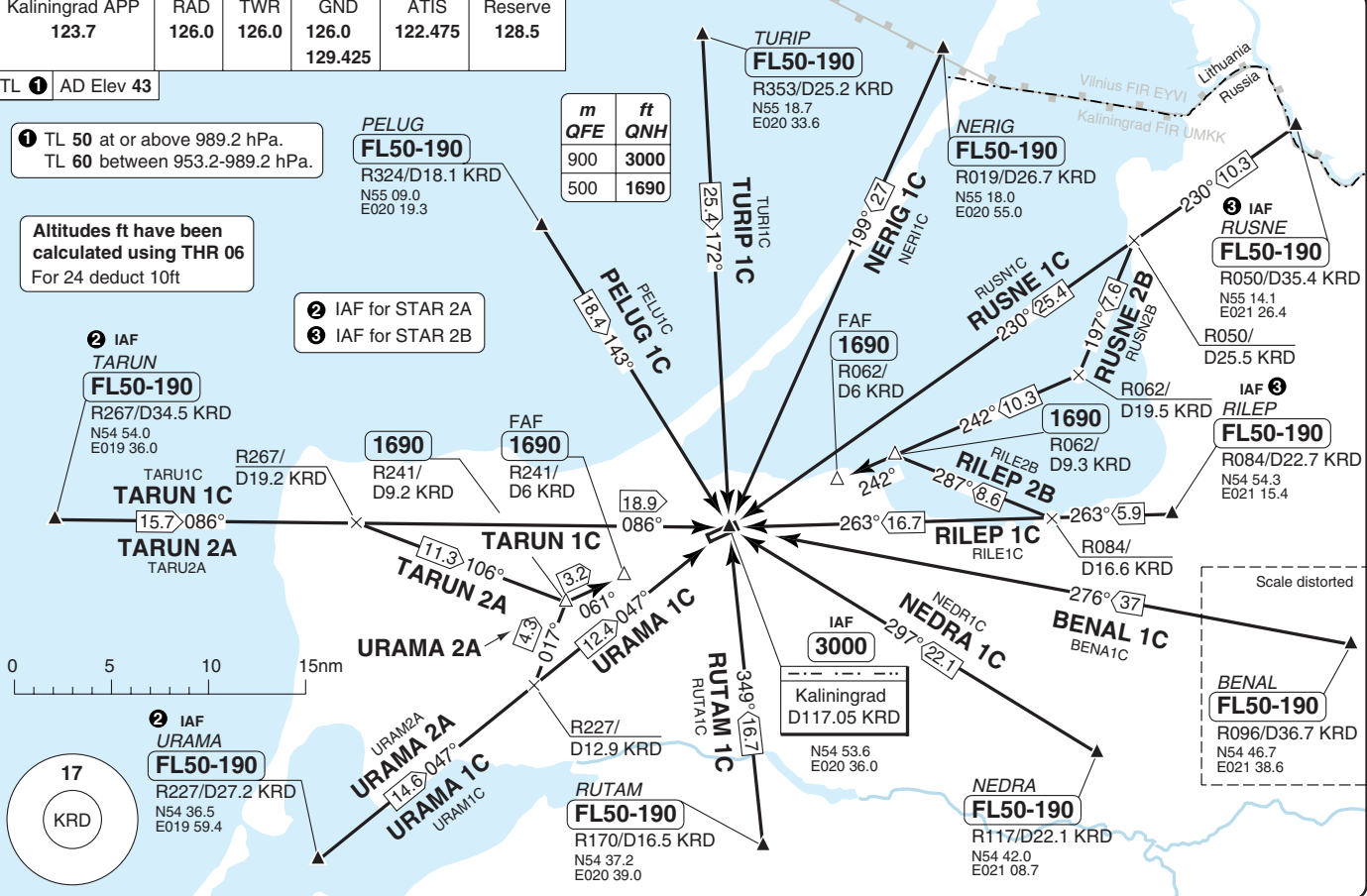
TL 1 AD Elev 43

1 TL 50 at or above 989.2 hPa.
TL 60 between 953.2-989.2 hPa.

Altitudes ft have been calculated using THR 06
For 24 deduct 10ft

m	ft
QFE	QNH
900	3000
500	1690

- 2 IAF for STAR 2A
- 3 IAF for STAR 2B



STAR RWY 06/24 VOR

WEF 03 MAY 12

40 - 3 04 APR 12

Khabrovo KALININGRAD
Russia - UMKK / KGD

THIS CHART IS A PART OF NAVIGRAPH NDAC AND IS INTENDED FOR FLIGHT SIMULATION USE ONLY

Change: RILEP 2B, RUSNE 2B, TARUN 2A, URMA 2A

WEF 03 MAY 12

40 - 4 | 04 APR 12

Russia - UMKK / KGD

STAR RWY 24

Khrabrovo **KALININGRAD**

Kaliningrad APP 123.7	RAD 126.0	TWR 126.0	GND 126.0 129.425	ATIS 122.475	Reserve 128.5
--------------------------	--------------	--------------	-------------------------	-----------------	------------------

TL ① AD Elev 43

① TL 50 at or above 989.2 hPa.
TL 60 between 953.2-989.2 hPa.

② For ILS APCH

m	ft
QFE	QNH
500	1680



Kaliningrad
D117.05 KRD
N54 53.6
E020 36.0

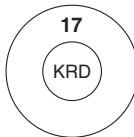


FAP
1680
R062/
D6 KRD
R062/
D9.3 KRD

840 KR
N54 54.6
E020 40.3

RILE2C
RILEP 2C
R084/
D16.6 KRD

IAF
RILEP
FL50-190
R084/D22.7 KRD
N54 54.3
E021 15.4



R050/
D25.5 KRD

R062/
D19.5 KRD

IAF
RUSNE
FL50-190
R050/D35.4 KRD
N55 14.1
E021 26.4

RUSN2C
RUSNE 2C
230° (10.3)

197° (7.6)

242° (10.3)

287° (8.6)

Vilnius FIR EYVI
Kaliningrad FIR UMKK

Lithuania
Russia

40 - 4

Navtech - umkk04aargl ©

Change: New

THIS CHART IS A PART OF NAVIGRAPH NDAC AND IS INTENDED FOR FLIGHT SIMULATION USE ONLY

ILS RWY 24 RILEP 2C, RUSNE 2C

Khrabrovo KALININGRAD

Kaliningrad APP 123.7	RAD 126.0	TWR 126.0	GND 126.0 129.425	ATIS 122.475	Reserve 128.5
--------------------------	--------------	--------------	-------------------------	-----------------	------------------

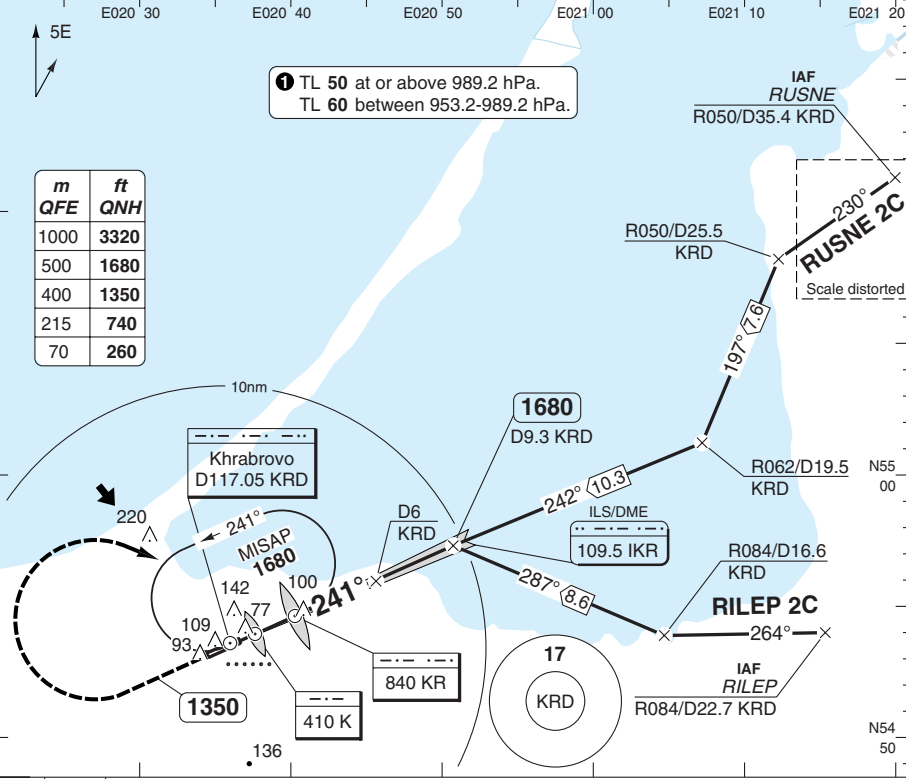
ILS/DME 109.5 IKR	FAT 241°	THR Elev 31 1hPa	AD Elev 43 2hPa	TL 1	TA 3320
-------------------	----------	------------------	-----------------	------	---------



1 TL 50 at or above 989.2 hPa.
TL 60 between 953.2-989.2 hPa.

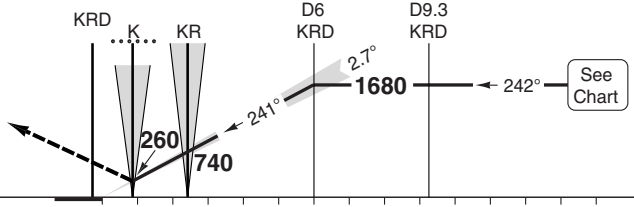
m	ft
QFE	QNH
1000	3320
500	1680
400	1350
215	740
70	260

PANS OPS



MAPt K / MM

Climb on 241° to 1350, turn right to [KR] climbing to 1680, then by ATC.



TCH 53

ACFT	ILS
A	240 (200) 550m
B	240 (204) 550m
C	
D	

Note: Circling NA.

LDA 2500x45
8202x147ft
P 2.7°

GS	80	100	120	140	160
ROD 2.7°	380	480	570	670	760



50 - 1

© Navitech - umkk01iap00

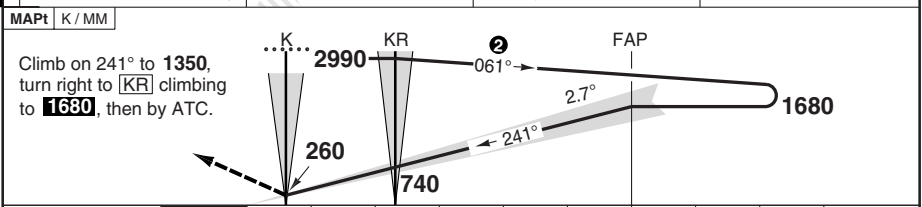
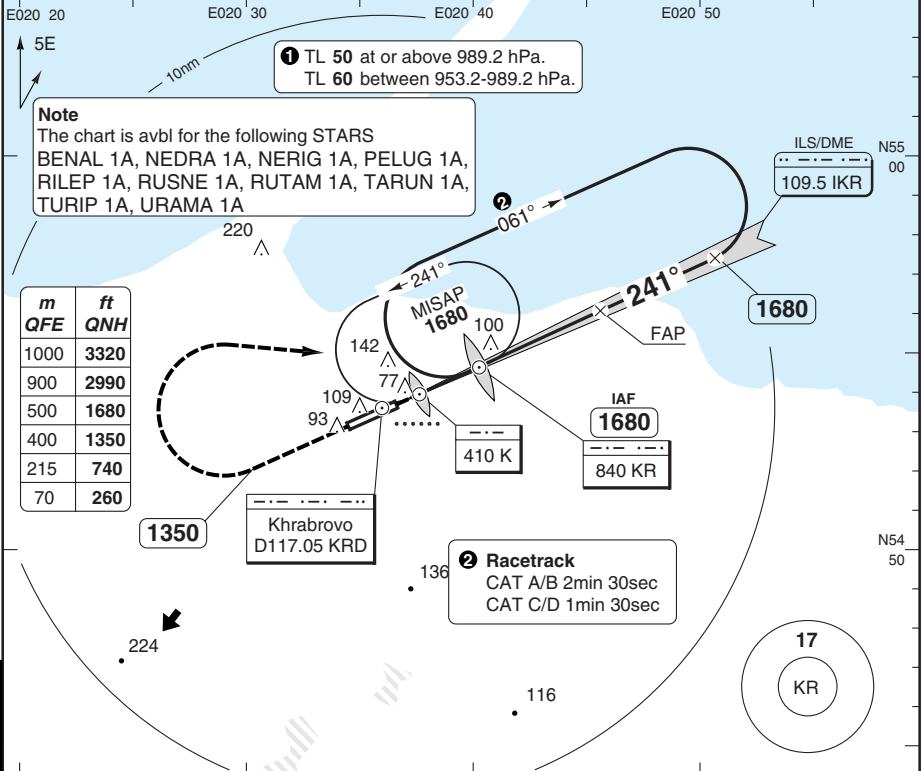
Change: New

ILS OR NDB RWY 24

Khrabrovo KALININGRAD

Kaliningrad APP 123.7	RAD 126.0	TWR 126.0	GND 126.0 129.425	ATIS 122.475	Reserve 128.5
--------------------------	--------------	--------------	-------------------------	-----------------	------------------

ILS/DME 109.5 IKR	FAT 241°	THR Elev 31 1hPa	AD Elev 43 2hPa	TL ① TA 3320
-------------------	----------	------------------	-----------------	--------------



TCH 53	0	1	2	3	4	5	6	7	8	9	nm
--------	---	---	---	---	---	---	---	---	---	---	----

ACFT	ILS	2NDB	NDB	NDB ③	Note: Circling NA.	LDA 2500x45 8202x147ft P 2.7°
A	240 (200) 550m	390 (350) 900m	420 (381) 1100m	420 (381) 1300m		
B				420 (381) 1500m		
C	240 (204) 550m	390 (350) 900m	420 (381) 1100m			
D						
GS	80	100	120	140	160	③ Non CDFA
ROD 2.7°	380	480	570	670	760	

PANS OPS 50 - 2

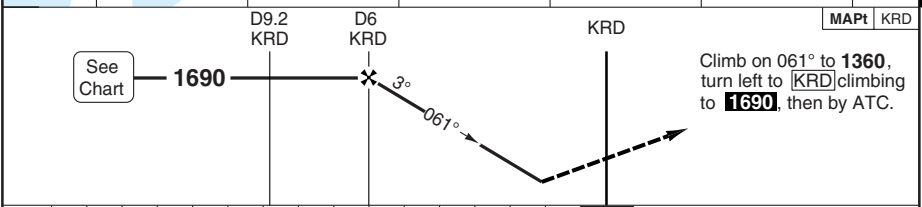
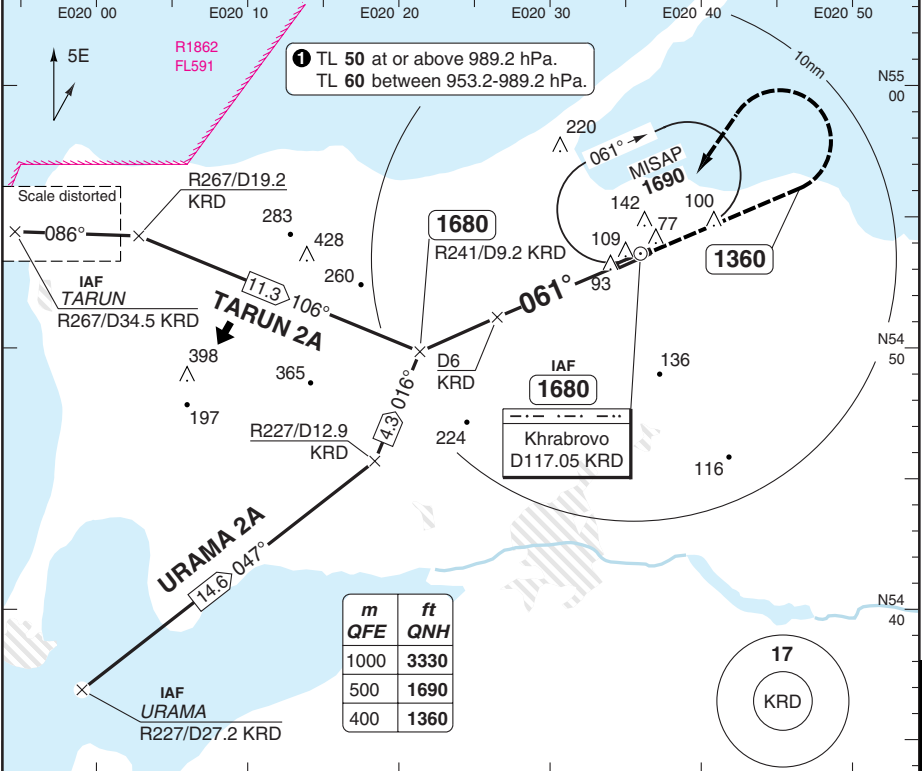
© Navtech - umkk02lap00 EU OPS

VOR RWY 06 TARUN 2A, URAMA 2A

Khrabrovo KALININGRAD

Kaliningrad APP 123.7	RAD 126.0	TWR 126.0	GND 126.0 129.425	ATIS 122.475	Reserve 128.5
--------------------------	--------------	--------------	-------------------------	-----------------	------------------

VOR/DME 117.05 KRD	FAT 061°	THR Elev 43 2hPa	AD Elev 43 2hPa	TL 1	TA 3330
--------------------	----------	------------------	-----------------	------	---------



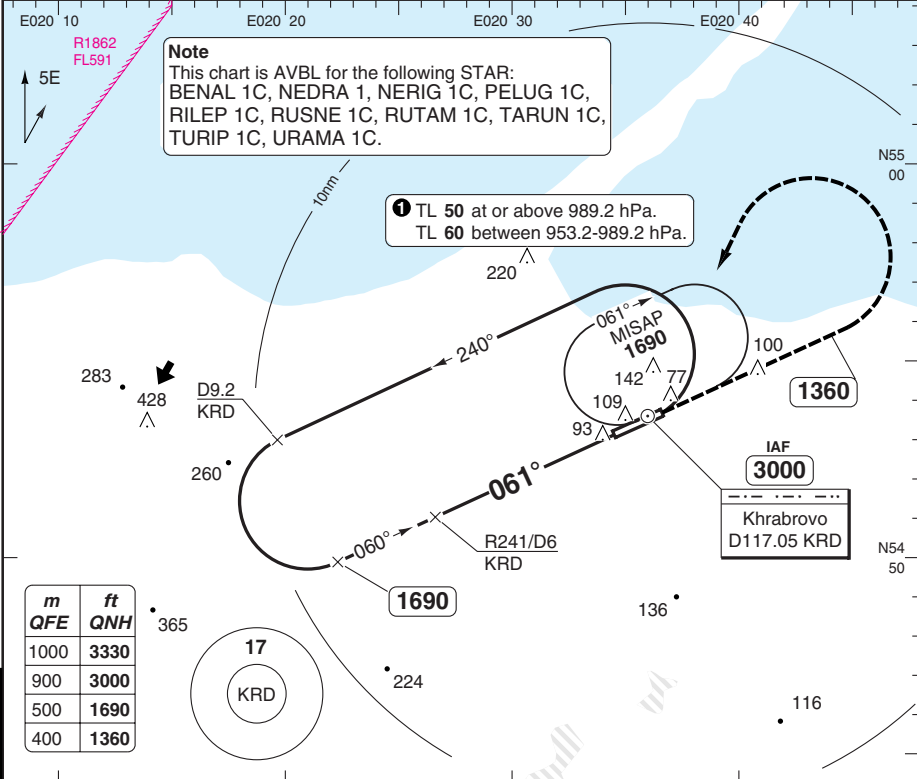
nm	15	14	13	12	11	10	9	8	7	6	5	4	3	2	1	0
ACFT	VOR+DME															
A	450 (404) 1500m															
B	450 (404) 1500m															
C	450 (404) 1500m															
D	450 (404) 1500m															
GS	80	100	120	140	160											
ROD 3.0°	420	530	640	740	850											
FAF-MAPt	4:30	3:36	3:00	2:34	2:15											
DME KRD	3.0° ALT	LDA 2500x45 8202x147ft P 3°														
6	1690															
5	1360															
4	1040															
3	730															
2.1	450															
BALS																
480																

VOR RWY 06

Khrabrovo KALININGRAD

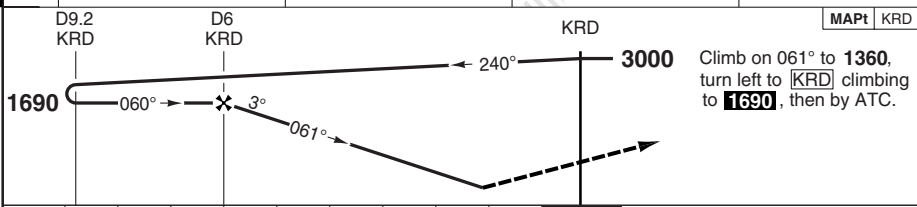
Kaliningrad APP 123.7	RAD 126.0	TWR 126.0	GND 126.0 129.425	ATIS 122.475	Reserve 128.5
--------------------------	--------------	--------------	-------------------------	-----------------	------------------

VOR/DME 117.05 KRD	FAT 061°	THR Elev 43 2hPa	AD Elev 43 2hPa	TL 1	TA 3330
--------------------	----------	------------------	-----------------	------	---------



PANS OPS

50 - 4



ACFT	VOR+DME					DME KRD	3.0° ALT	LDA 2500x45 8202x147ft
A	450 (404)					6	1690	P 3° BALS 480
B	1500m					5	1360	
C	450 (404)					4	1040	
D	1500m					3	730	
						2.1	450	
GS	80	100	120	140	160			
ROD 3.0°	420	530	640	740	850			
FAF-MAPt	4:30	3:36	3:00	2:34	2:15			

© Navtech - umkk04iap00

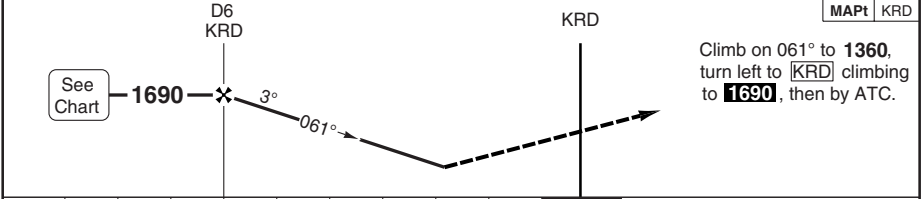
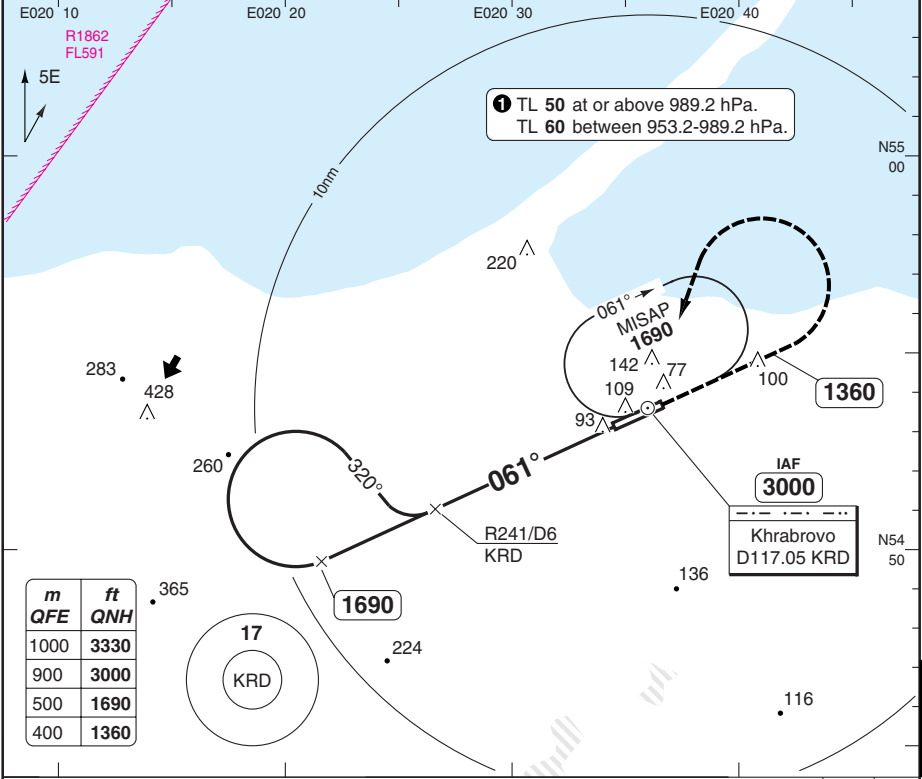
Change: Area

VOR RWY 06 RILEP 1C, RUSNE 1C

Khrabrovo KALININGRAD

Kaliningrad APP 123.7	RAD 126.0	TWR 126.0	GND 126.0 129.425	ATIS 122.475	Reserve 128.5
--------------------------	--------------	--------------	-------------------------	-----------------	------------------

VOR/DME 117.05 KRD	FAT 061°	THR Elev 43 2hPa	AD Elev 43 2hPa	TL ①	TA 3330
--------------------	----------	------------------	-----------------	------	---------



ACFT	VOR+DME				
A	450 (404)				
B	1500m				
C	450 (404)				
D	1500m				
GS	80	100	120	140	160
ROD 3.0°	420	530	640	740	850
FAF-MAPt	4:30	3:36	3:00	2:34	2:15

DME KRD	3.0° ALT
6	1690
5	1360
4	1040
3	730
2.1	450

LDA 2500x45
8202x147ft
P 3°
BALS
480

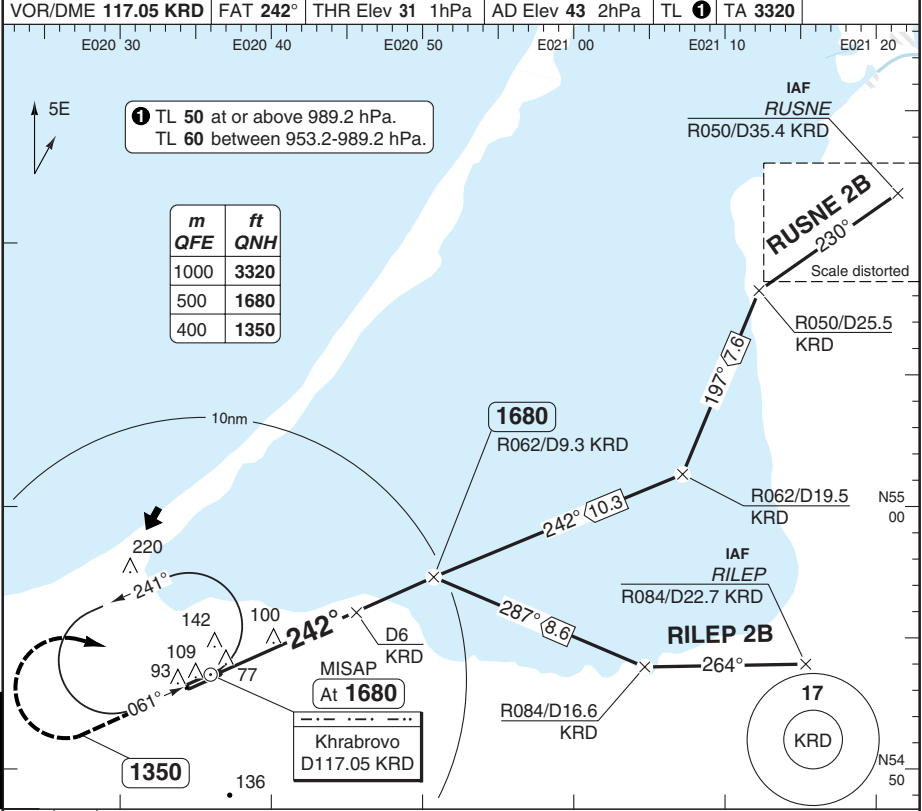
© Navitech - umkk05iap00

50 - 5

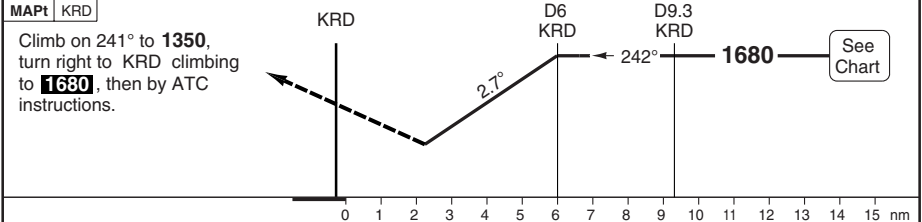
VOR RWY 24 RILEP 2B, RUSNE 2B

Khrabrovo KALININGRAD

Kaliningrad APP 123.7	RAD 126.0	TWR 126.0	GND 126.0 129.425	ATIS 122.475	Reserve 128.5
VOR/DME 117.05 KRD		FAT 242°	THR Elev 31 1hPa	AD Elev 43 2hPa	TL ① TA 3320



50 - 6



ACFT	VOR+DME					DME KRD	2.7° ALT	LDA 2500x45 8202x147ft	
A						6	1680	P 2.7° FALS	
B	480 (446) 1400m					5	1390		
C						4	1110		
D						3	830		
GS		80	100	120	140	160	2		550
ROD 3.0°		370	470	560	660	750	1.8		480
FAF-MAPt		4:30	3:36	3:00	2:34	2:15			

© Navitech - umkk06iap00

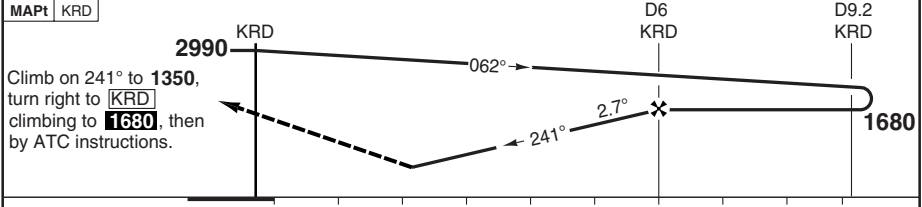
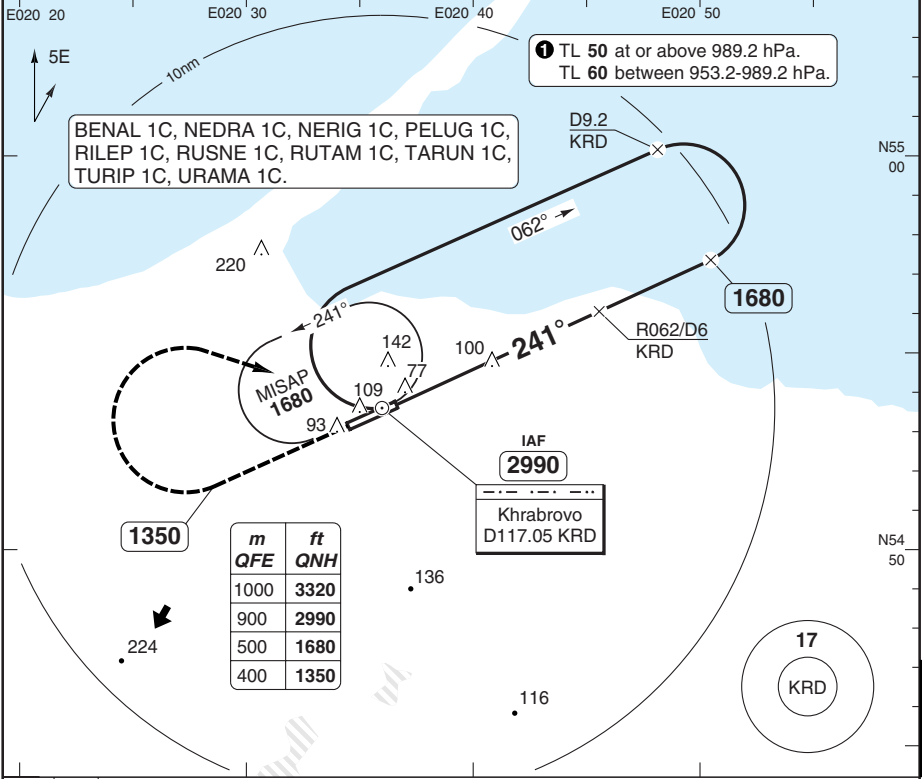
Change: New

VOR RWY 24

Khrabrovo KALININGRAD

Kaliningrad APP 123.7	RAD 126.0	TWR 126.0	GND 126.0 129.425	ATIS 122.475	Reserve 128.5
---------------------------------	---------------------	---------------------	---------------------------------------	------------------------	-------------------------

VOR/DME 117.05 KRD	FAT 241°	THR Elev 31 1hPa	AD Elev 43 2hPa	TL 1	TA 3320
---------------------------	-----------------	------------------	------------------------	-------------	----------------



ACFT	VOR+DME					DME KRD	2.7° ALT	LDA 2500x45 8202x147ft
A						6	1680	P 2.7° FALS
B	480 (446)					5	1390	
C	1400m					4	1110	
D						3	830	
GS	80	100	120	140	160	2	550	
ROD 3.0°	370	470	560	660	750	1.8	480	
FAF-MAPt	4:30	3:36	3:00	2:34	2:15			

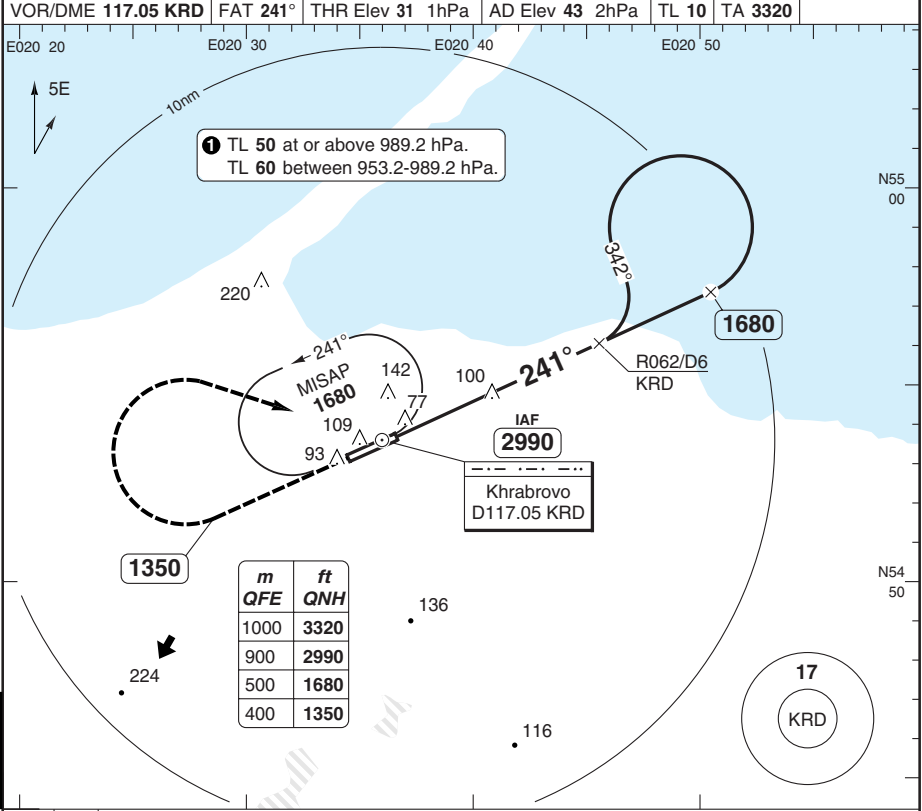
© Navtech - umkk07iap00
EU OPS

50 - 7

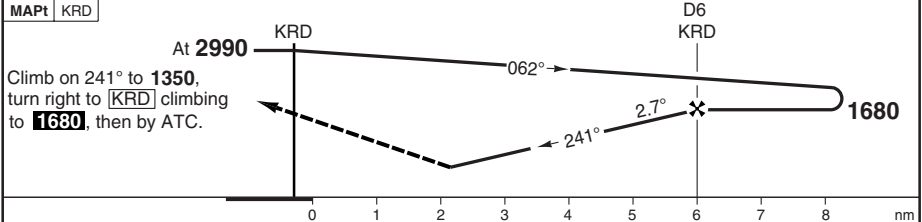
VOR RWY 24 TARUN 1C, URAMA 1C

Khrabrovo KALININGRAD

Kaliningrad APP 123.7	RAD 126.0	TWR 126.0	GND 126.0 129.425	ATIS 122.475	Reserve 128.5		
VOR/DME 117.05 KRD	FAT 241°	THR Elev 31	1hPa	AD Elev 43	2hPa	TL 10	TA 3320



50 - 8



ACFT	VOR+DME
A	
B	480 (446)
C	1400m
D	

DME KRD	2.7° ALT	LDA 2500x45
6	1680	8202x147ft
5	1390	P 2.7°
4	1110	
3	830	
2	550	
1.8	480	

GS	80	100	120	140	160
ROD 3.0°	370	470	560	660	750
FAF-MAPt	4:30	3:36	3:00	2:34	2:15

© Navitech - umkk08iap00

Change: New

NDB RWY 06

Khrabrovo KALININGRAD

Kaliningrad APP 123.7	RAD 126.0	TWR 126.0	GND 126.0 129.425	ATIS 122.475	Reserve 128.5
--------------------------	--------------	--------------	-------------------------	-----------------	------------------

NDB 410 K	FAT 061°	THR Elev 43 2hPa	AD Elev 43 2hPa	TL ①	TA 3330
-----------	----------	------------------	-----------------	------	---------

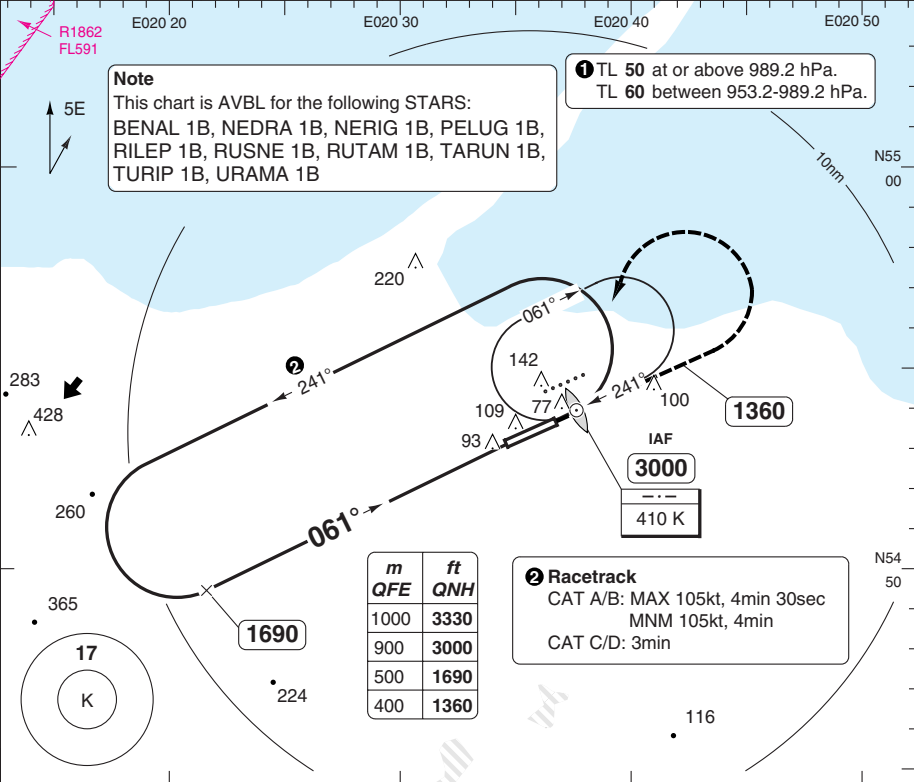
R1862
FL591

Note
This chart is AVBL for the following STARS:
BENAL 1B, NEDRA 1B, NERIG 1B, PELUG 1B,
RILEP 1B, RUSNE 1B, RUTAM 1B, TARUN 1B,
TURIP 1B, URAMA 1B

① TL 50 at or above 989.2 hPa.
TL 60 between 953.2-989.2 hPa.

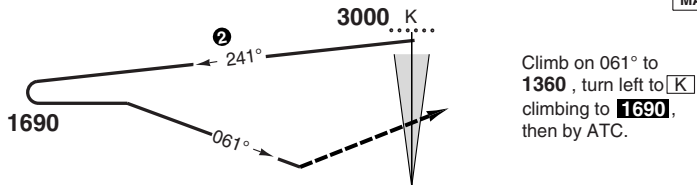


PANS OPS



50 - 9

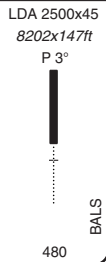
MAPt | K



ACFT	NDB	NDB ②
A	640 (597) 2500m	640 (597) 2700m
B		
C	810 (761) 3400m	810 (761) 3800m
D		

Note: Circling NA.

② Non CDFA



© Navtech - umkk09iap00

Change: Area

WEF 03 MAY 12

50 - 10 | 04 APR 12

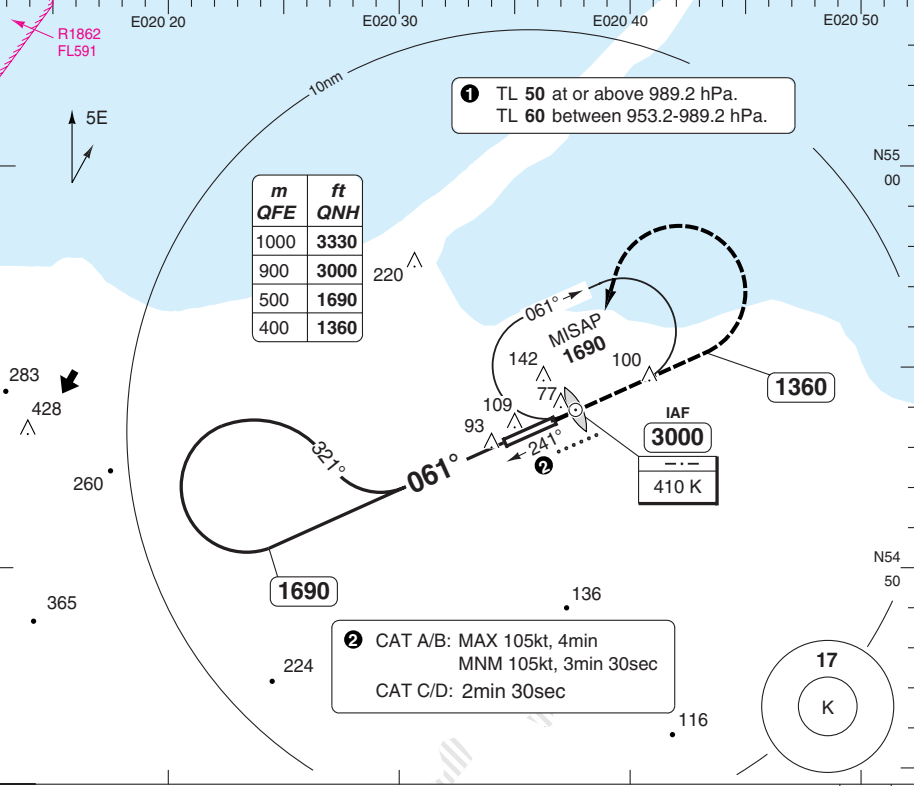
Russia - UMKK / KGD

NDB RWY 06 RILEP 1B, RUSNE 1B

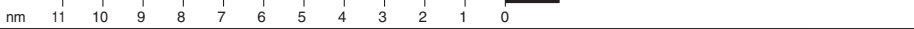
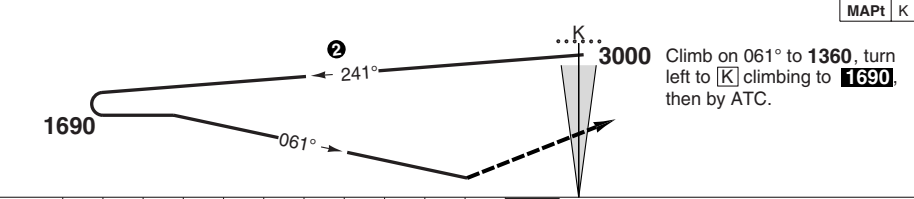
Khrabrovo KALININGRAD

Kaliningrad APP 123.7	RAD 126.0	TWR 126.0	GND 126.0 129.425	ATIS 122.475	Reserve 128.5
--------------------------	--------------	--------------	-------------------------	-----------------	------------------

NDB 410 K	FAT 061°	THR Elev 43 2hPa	AD Elev 43 2hPa	TL 1	TA 3330
-----------	----------	------------------	-----------------	------	---------



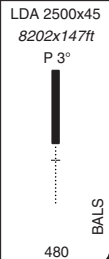
50 - 10



ACFT	NDB	NDB ②
A	640 (597) 2500m	640 (597) 2700m
B		
C	810 (761) 3400m	810 (761) 3800m
D		

Note: Circling NA.

② Non CDFA



© Navtech - umkk10iap00

Change: Area

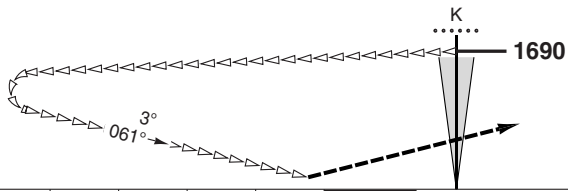
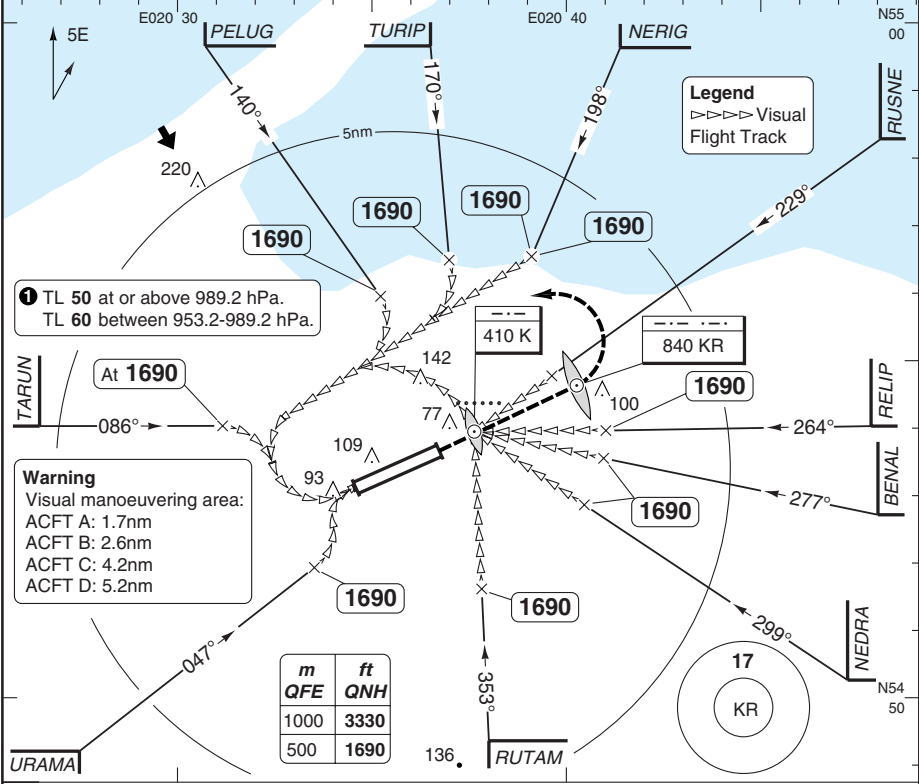
THIS CHART IS A PART OF NAVIGRAPH NDAC AND IS INTENDED FOR FLIGHT SIMULATION USE ONLY

CIRCLING RWY 06

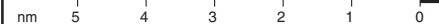
Khrabrovo KALININGRAD

Kaliningrad APP 123.7	RAD 126.0	TWR 126.0	GND 126.0 129.425	ATIS 122.475	Reserve 128.5
--------------------------	--------------	--------------	-------------------------	-----------------	------------------

NDB 410 K	FAT 061°	THR Elev 43 2hPa	AD Elev 43 2hPa	TL 1	TA 3330
-----------	----------	------------------	-----------------	------	---------



Climb on 061° to **1690** climbing to **1690**, then turn left, then according to chart.



ACFT	Circling
A	600 (551) 1.5km
B	600 (551) 1.6km
C	700 (650) 2.4km
D	710 (663) 3.6km

a The radii of visual manoeuvring (circling) area for ACFT categories are as follows:
 A - 3110m
 B - 4870m
 C - 7790m
 D - 9690m

LDA 2500x45
8202x147ft
P 3°



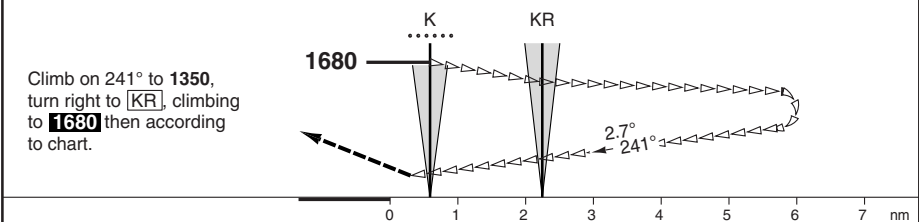
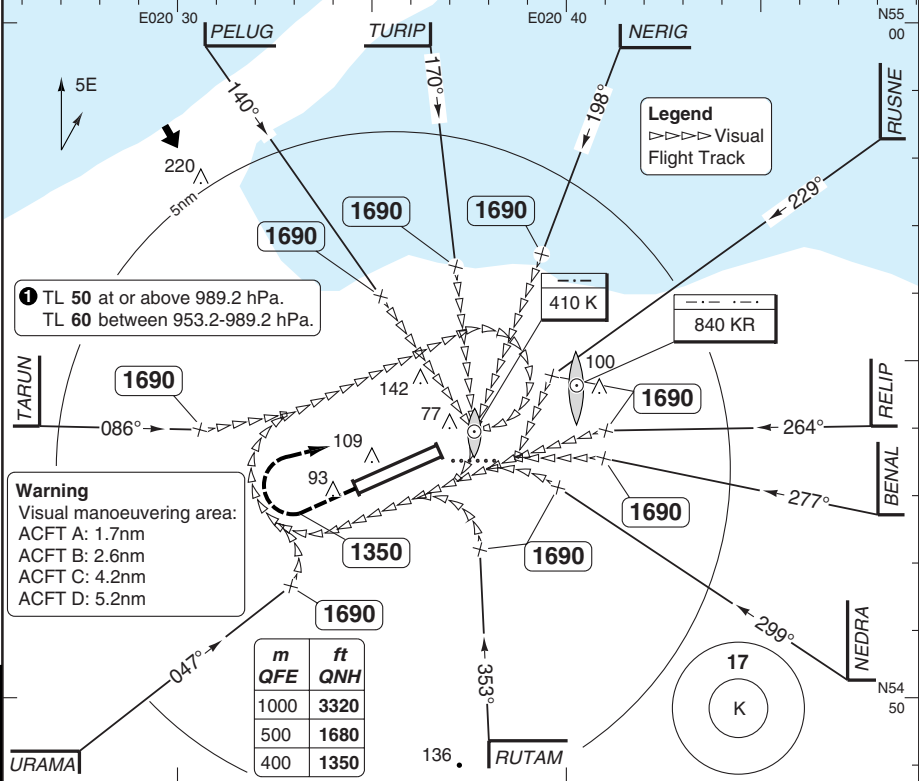
50 - 11

CIRCLING RWY 24

Khrabrovo KALININGRAD

Kaliningrad APP 123.7	RAD 126.0	TWR 126.0	GND 126.0 129.425	ATIS 122.475	Reserve 128.5
--------------------------	--------------	--------------	-------------------------	-----------------	------------------

NDB 410 K	FAT 061°	THR Elev 31	1hPa	AD Elev 43	2hPa	TL 1	TA 3320
-----------	----------	-------------	------	------------	------	------	---------



ACFT	Circling
A	610 (564) 1.5km
B	610 (564) 1.6km
C	710 (663) 2.4km
D	720 (676) 3.6km

a The radii of visual manoeuvring (circling) area for ACFT categories are as follows:
 A - 3110m
 B - 4870m
 C - 7790m
 D - 9690m

LDA 2500x45
8202x147ft
P 2.7°

© Navtech - umkk12iap00

Change: New

JAR-OPS Landing Minima

Khrabrovo **KALININGRAD**

The following Minima is for Public Transport aircraft and conforms to JAR-OPS1 regulations.

STRAIGHT-IN APPROACH		C				D			
R/W	Procedure	DA/ MDA QNH ft	DH/ MDH QFE ft	RVR m	RVR No ALS m	DA/ MDA QNH ft	DH/ MDH QFE ft	RVR m	RVR No ALS m
06	NDB	910	870	2000	2000	910	870	2000	2000
24	ILS	240	200	550	1000	240	200	550	1000
24	2 NDB	350	320	1000	1800	350	320	1400	2000

Notes:

CIRCLING		C			D		
R/W	Procedure	MDA QNH ft	MDH QFE ft	Vis m	MDA QNH ft	MDH QFE ft	Vis m
Not authorised							

Notes:

TAKE-OFF		C		D	
Runway	Facilities	RVR	Vis	RVR	Vis
06/24	REDL and/or RCL	400	-	400	-
06/24	Nil (Day only)	500	-	500	-

Notes:

JAR-OPS Landing Minima

Khrabrovo **KALININGRAD**

The following Minima is for Public Transport aircraft and conforms to JAR-OPS1 regulations.

STRAIGHT-IN APPROACH		A				B			
R/W	Procedure	DA/ MDA QNH ft	DH/ MDH QFE ft	RVR m	RVR No ALS m	DA/ MDA QNH ft	DH/ MDH QFE ft	RVR m	RVR No ALS m
06	NDB	910	870	1500	1500	910	870	1500	1500
24	ILS	240	200	550	1000	240	200	550	1000
24	2 NDB	350	320	900	1500	350	320	1000	1500

Notes:

CIRCLING		A			B		
R/W	Procedure	MDA QNH ft	MDH QFE ft	Vis m	MDA QNH ft	MDH QFE ft	Vis m
Not authorised							

Notes:

TAKE-OFF		A		B	
Runway	Facilities	RVR	Vis	RVR	Vis
06/24	REDL and/or RCL	400	-	400	-
06/24	Nil (Day only)	500	-	500	-

Notes: