

## Airport information:

Country: Ukraine

City: KYIV

Coordinates: N 50° 24.1', E030 27.1

Elevation: 587

Customs: Customs

Fuel: TS-1 (Equivalent to Jet A1)

RFF: CAT6

hours: ATS H24

## Runways:

Runway 08

Takeoff length: 2310, Landing length: 2160

Runway 26

Takeoff length: 2160, Landing length: 2262

WEF 20 OCT 11

10 - 1 | 14 SEP 11

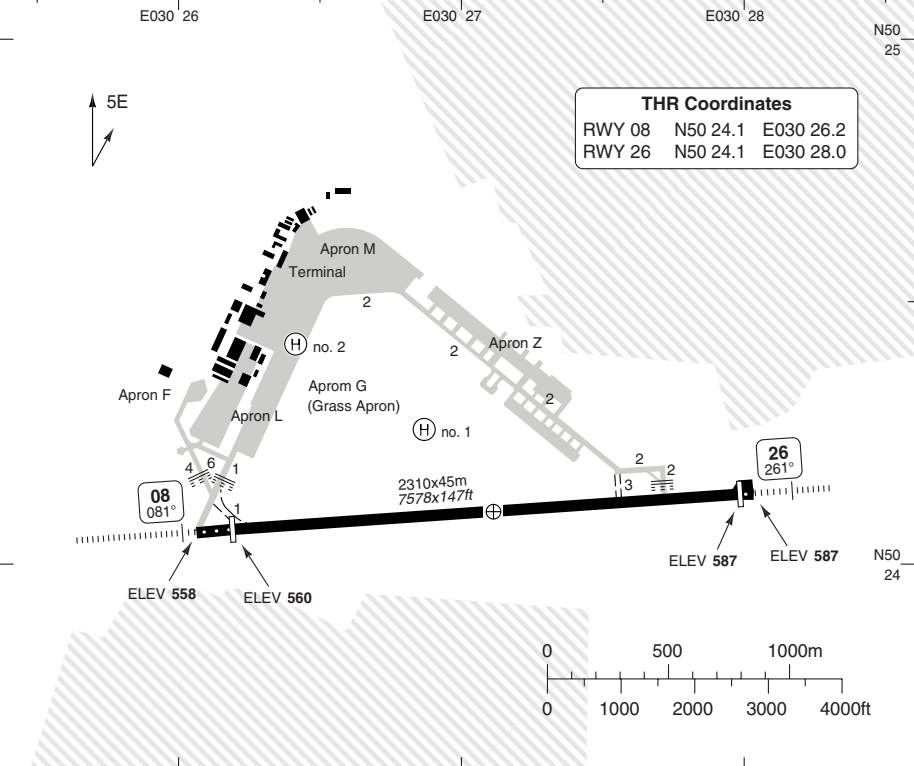
Ukraine - UKKK / IEV

# AERODROME

Zhuliany **KYIV**

Zhuliany GND <b>119.0</b>	TWR <b>122.5</b>	RAD <b>123.0</b>	MET <b>126.8</b>	
------------------------------	---------------------	---------------------	---------------------	--

AD Elev <b>587</b>	ARP: N50 24.1 E030 27.1	RFF: CAT 6	AD HR: H24
--------------------	-------------------------	------------	------------



THR Coordinates			
RWY 08	N50 24.1	E030 26.2	
RWY 26	N50 24.1	E030 28.0	

RWY	Slope	TORA m/ft	LDA m/ft	ALS	REDL	Additional
08	+0.4	2310 / 7578	2160 / 7086	H-D	H	P 3°
26	-0.4	2160 / 7086	2262 / 7421	H-D	H	P 3°

① 300m.

**EU OPS TAKE OFF MINIMA**

RWY	Facilities	RVR			
		A	B	C	D
08/26	RCL (day only) or RCL + REDL	400m			
	NIL (day only)	500m			

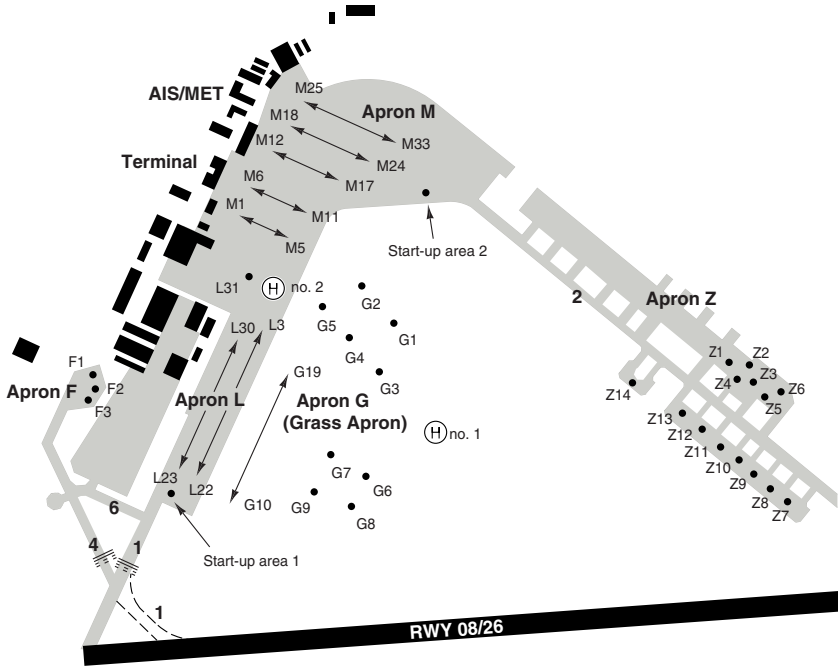
© Navtech - ukkk01laorg0

Change: New spec.

**THIS CHART IS A PART OF NAVIGRAPH NDAC AND IS INTENDED FOR FLIGHT SIMULATION USE ONLY**

# AERODROME

Zhuliany GND <b>119.0</b>	TWR <b>122.5</b>	RAD <b>123.0</b>	MET <b>126.8</b>
------------------------------	---------------------	---------------------	---------------------



## GENERAL INFORMATION

### 1. WARNING

- 1.1 Do not mistake lighted highway for APL RWY 08.
- 1.2 Watch out for birds.

### 2. TWY RESTRICTION

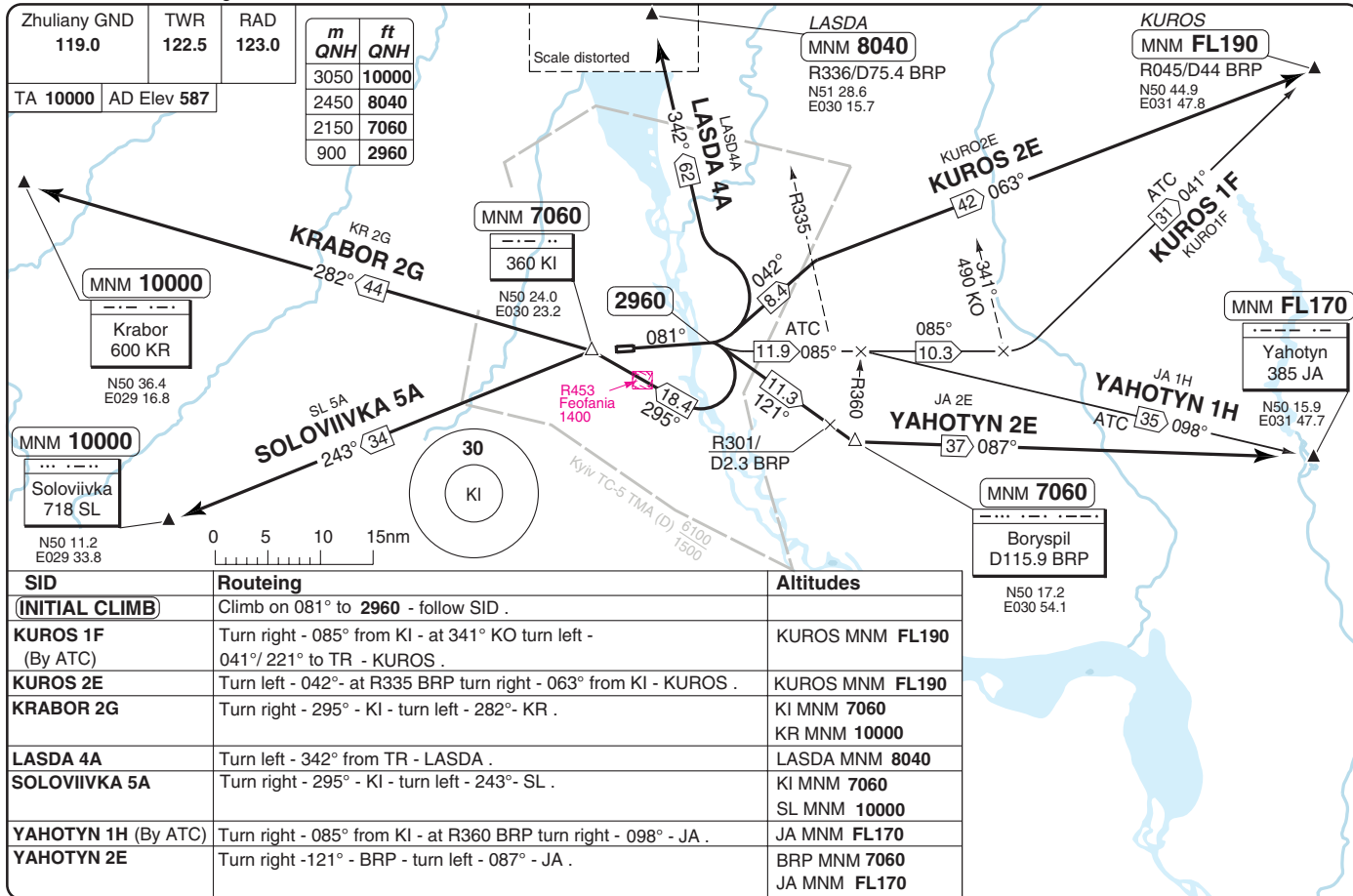
- 2.1 TWY 1, 2 width 21m/68ft
- 2.2 TWY 4, 6 width 16m/52ft
- 2.3 TWY 4 not used.
- 2.4 TWY 6 for towing only.

### 3. TAXI

- 3.1 Taxiing is performed only with FOLLOW ME car.
- 3.2 Taxiing via TWY 4 with tow tractor only.
- 3.3 YAK-42, A-320, B-737 should taxi only via TWY 1 and 2.
- 3.4 Enter Stands M2, M4, M8, M10 only if adjacent stands are not occupied.

### 4. NOISE ABATEMENT PROCEDURE

NAP applies.



SID Rwy 08 North, East, West

W/E 20 OCT 11

30 - 1 14 SEP 11

Ukraine - UKKK / IEV  
Zhuliany KYIV



Change: New spec.

Zhuliany GND	TWR	RAD
119.0	122.5	123.0

TA 10000 AD Elev 587

m	ft
QNH	QNH
3050	10000
2450	8040
2150	7060
350	1150

By ATC  
360 KV

1150 N50 24.3 E030 30.7

261°

R453 Feofania 1400

P25 Kyiv 2300

Scale distorted

LASDA  
MNM 8040  
R336/D75.4 BRP  
N51 28.6 E030 15.7

KUROS  
MNM FL 190  
R045/D44 BRP  
N50 44.9 E031 47.8

KURO5B  
49 062°

ATC 31 041°  
KURO1H  
KURO1H

ATC 15.7 086°

ATC 10.3 086°

MNM FL170

Yahotyn 385 JA  
N50 15.9 E031 47.7

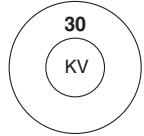
JA 1J  
YAHOTYN 1J  
35 098°  
ATC

JA 5B  
YAHOTYN 5B  
35 087°

MNM 7060

Boryspil D115.9 BRP

N50 17.2 E030 54.1



0 5 10 15nm

SID	Routeing	Altitudes
<b>(INITIAL CLIMB)</b>	Climb on 261° to 1150 - turn left - follow SID .	
<b>KUROS 1H</b> (By ATC)	022° - KV - turn right - 086° from KV - at 341° KO turn left - 041°/221° to TR - KUROS .	KV By ATC KUROS MNM FL190
<b>KUROS 5B</b>	022° - KV - turn right - 062° from KV - KUROS .	KV By ATC KUROS MNM FL190
<b>LASDA 4B</b>	022° - KV - turn right - 062° from KV - at 155° TR turn left - 342°/162° to TR - LASDA .	KV By ATC LASDA MNM 8040
<b>YAHOTYN 1J</b> (By ATC)	022° - KV - turn right - 086°/266° KV - at R360 BRP turn right - 098° - JA .	KV By ATC JA MNM FL170
<b>YAHOTYN 5B</b>	091° - BRP - turn left - 087° - JA .	BRP MNM 7060 JA MNM FL170

SID Rwy 26 North, East

W/E 20 OCT 11

30 - 3 | 14 SEP 11

Ukraine - UKKK / EV  
Zhuliany KYIV

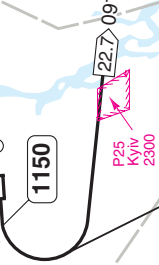
WEF 20 OCT 11

30 - 4 | 14 SEP 11

Ukraine - UKKK / IEV  
Zhuliany KYIV

# SID Rwy 26 South

Zhuliany GND	TWR	RAD
119.0	122.5	123.0
TA 10000	AD Elev 587	261°



m	ft
3050	10000
2750	9030
2150	7060
350	1150



SID	Routing	Altitudes
(INITIAL CLIMB)	Climb on 261° to 1150 - turn left - follow SID.	
PII 1Q (By ATC)	148° - at R215/D18.8 BRP turn left - 110° - PI.	PI MNM 9030
PII 2T	091° - at R271/D3.8 BRP turn right - 201° - at R201/D12.4 BRP turn left - 122° - PI.	TR MNM 7060 PI MNM 9030
STEBLIV 1T (By ATC)	148° - SV.	SV MNM 9030
SULUM 1T (By ATC)	148° - at R215/D18.8 BRP turn right - 167°/347° to KV - SULUM.	SULUM MNM 9030
TRYPILLIA 2T	091° - at R271/D3.8 BRP turn right - 201° - TR.	TR MNM 7060

Change: New spec.

**THIS CHART IS A PART OF NAVIGRAPH NDAC AND IS INTENDED FOR FLIGHT SIMULATION USE ONLY**

© Navtech - ukkk05daorg0

Zhuliany GND	TWR	RAD
119.0	122.5	123.0

TA 10000 AD Elev 587

m	ft
3050	10000
600	1970
350	1150

MNM 10000

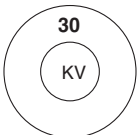
--- ---
Krabor
600 KR

N50 36.4  
E029 16.8

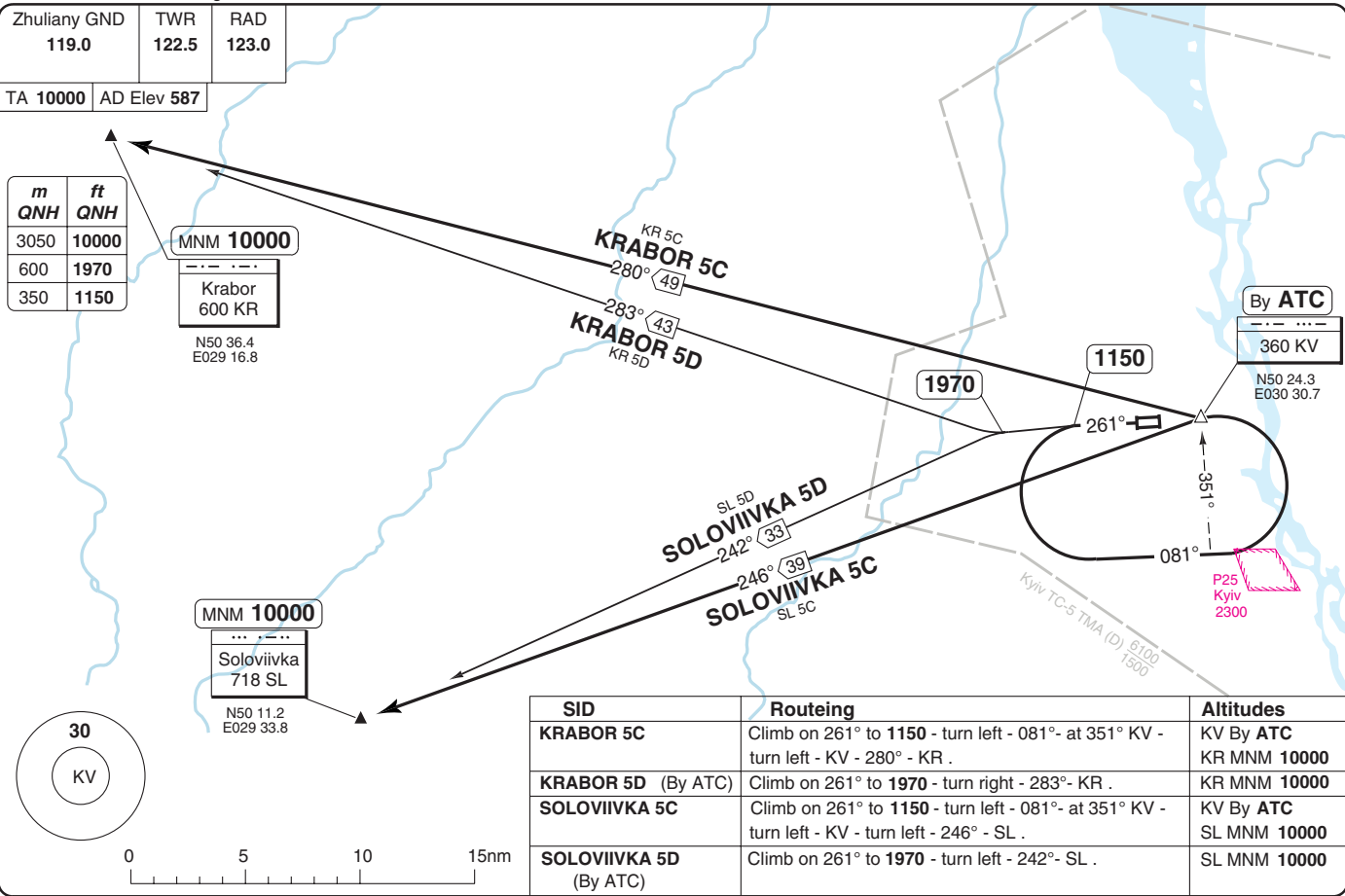
MNM 10000

... ---
Soloviivka
718 SL

N50 11.2  
E029 33.8



Reverse side blank



SID	Routing	Altitudes
<b>KRABOR 5C</b>	Climb on 261° to 1150 - turn left - 081°- at 351° KV - turn left - KV - 280° - KR .	KV By ATC KR MNM 10000
<b>KRABOR 5D (By ATC)</b>	Climb on 261° to 1970 - turn right - 081°- KR .	KR MNM 10000
<b>SOLOVIIVKA 5C</b>	Climb on 261° to 1150 - turn left - 081°- at 351° KV - turn left - KV - turn left - 246° - SL .	KV By ATC SL MNM 10000
<b>SOLOVIIVKA 5D (By ATC)</b>	Climb on 261° to 1970 - turn left - 242°- SL .	SL MNM 10000

SID RWY 26 West

W/F 20 OCT 11

30 - 5 | 14 SEP 11

Ukraine - UKKK / IEV  
Zhuliany KYIV

# STAR RWY 08 from North, West

Zhuliany RAD 123.0	TWR 122.5	GND 119.0
-----------------------	--------------	--------------

TL ATC AD Elev 587

**SPEED**  
MAX 250kt below 10000ft within  
30nm from ARP Kyiv/Boryspil (UKBB).

MNM 10000

Koshany  
490 KO  
N50 56.8  
E030 58.7

m	ft
QNH	QNH
3050	10000
1500	4930
1200	3940
900	2960

KO 4A  
**KOSHANY 4A**  
232° 63

LUTIK  
MNM 4930

R317/D31.6 BRP  
N50 42.2  
E030 23.7

Kyiv/Antonov  
UKKM

MNM 4930

KO 4A  
**KOSHANY 4A**  
LUT14A  
**LUTIK 4A**

Kyiv/Chaika

Sviatoshyn

P6  
Kyiv  
5000  
H24

R772  
5000-FL170  
By ATC

Scale distorted

243°  
2960  
063°

34 063°  
**SOLOVIIVKA 4E**  
SL 4E

IAF  
MNM 3940

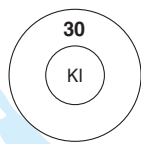
360 KI

N50 24.0  
E030 23.2

Boryspil  
D115.9 BRP  
N50 17.2  
E030 54.1

MNM 10000

Soloviivka  
718 SL  
N50 11.2  
E029 33.8



Kyiv TC-5 TMA (D) 6100  
1500

Ukraine - UKKK / IEV

40 - 2 | 14 SEP 11

STAR RWY 08 from East

Zhuliany KYIV

Zhuliany RAD 123.0	TWR 122.5	GND 119.0
-----------------------	--------------	--------------

TL ATC AD Elev 587

IAF  
MNM 3940

360 KI

N50 24.0  
E030 23.2



261°

D11.9  
BRP

Kyiv TC-5 TMA (D) 6100  
1500

300° (27.5)

R327



MNM 7060

Boryspil  
D115.9 BRP

N50 17.2  
E030 54.1

m	ft
2150	7060
1200	3940
900	2960

**SPEED**

MAX 250kt below 10000ft within  
30nm from ARP Kyiv/Boryspil (UKBB).

MNM FL120

Yahotyn  
385 JA

N50 15.9  
E031 47.7

JA 1S  
YAHOTYN 1S  
278° (55)  
By ATC

JA 5C  
YAHOTYN 5C

R082

R094

(By ATC)

CY 5A  
CHERVONYI 5A

CY 1S  
CHERVONYI 1S

350°

123°

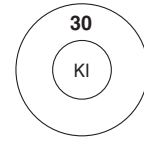
2960

303°

MNM 7060

Chervonyi  
960 CY

N50 04.1  
E031 23.5



Change: New spec.

THIS CHART IS A PART OF NAVIGRAPH NDAC AND IS INTENDED FOR FLIGHT SIMULATION USE ONLY

# STAR RWY 26 from North, West

Zhuliany RAD 123.0	TWR 122.5	GND 119.0
-----------------------	--------------	--------------

TL ATC AD Elev 587

**SPEED**  
MAX 250kt below 10000ft within  
30nm from ARP Kyiv/Boryspil (UKBB).

MNM 10000

Koshany  
490 KO  
N50 56.8  
E030 58.7

m QNH	ft QNH
3050	10000
1500	4930
1200	3940
900	2960

KO 5B  
**KOSHANY 5B**  
232°  $\overline{63}$

LUTIK

MNM 4930  
R317/D31.6 BRP  
N50 42.2  
E030 23.7

Kyiv/Antonov  
UKKM

MNM 4930  
D22.1 BRP

P6  
Kyiv  
5000  
H24

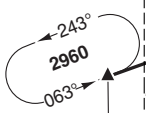
R772  
5000-FL170  
By ATC

Sviatoshyn

Kyiv/Chaika

LUTIK 5B  
LUTISB

Scale distorted



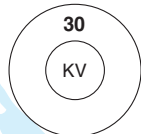
39 065°  
**SOLOVIIVKA 2J**  
SL 2J

IAF  
MNM 3940  
360 KV  
N50 24.3  
E030 30.7

Boryspil  
D115.9 BRP  
N50 17.2  
E030 54.1

MNM 10000

Soloviivka  
718 SL  
N50 11.2  
E029 33.8



Kyiv TC-5 TMA (D) 6100  
1500

Ukraine - UKKK / IEV

40 - 4 | 14 SEP 11

STAR Rwy 26 from East

Zhuliany KYIV

Zhuliany RAD 123.0	TWR 122.5	GND 119.0
-----------------------	--------------	--------------

TL ATC AD Elev 587



IAF  
**MNM 3940**  
360 KV  
N50 24.3  
E030 30.7

Kyiv TC-5 TMA (D) 6100 1500



**MNM 7060**  
Boryspil  
D115.9 BRP  
N50 17.2  
E030 54.1

m	ft
2150	7060
1200	3940
900	2960

**SPEED**  
MAX 250kt below 10000ft within  
30nm from ARP Kyiv/Boryspil (UKBB).

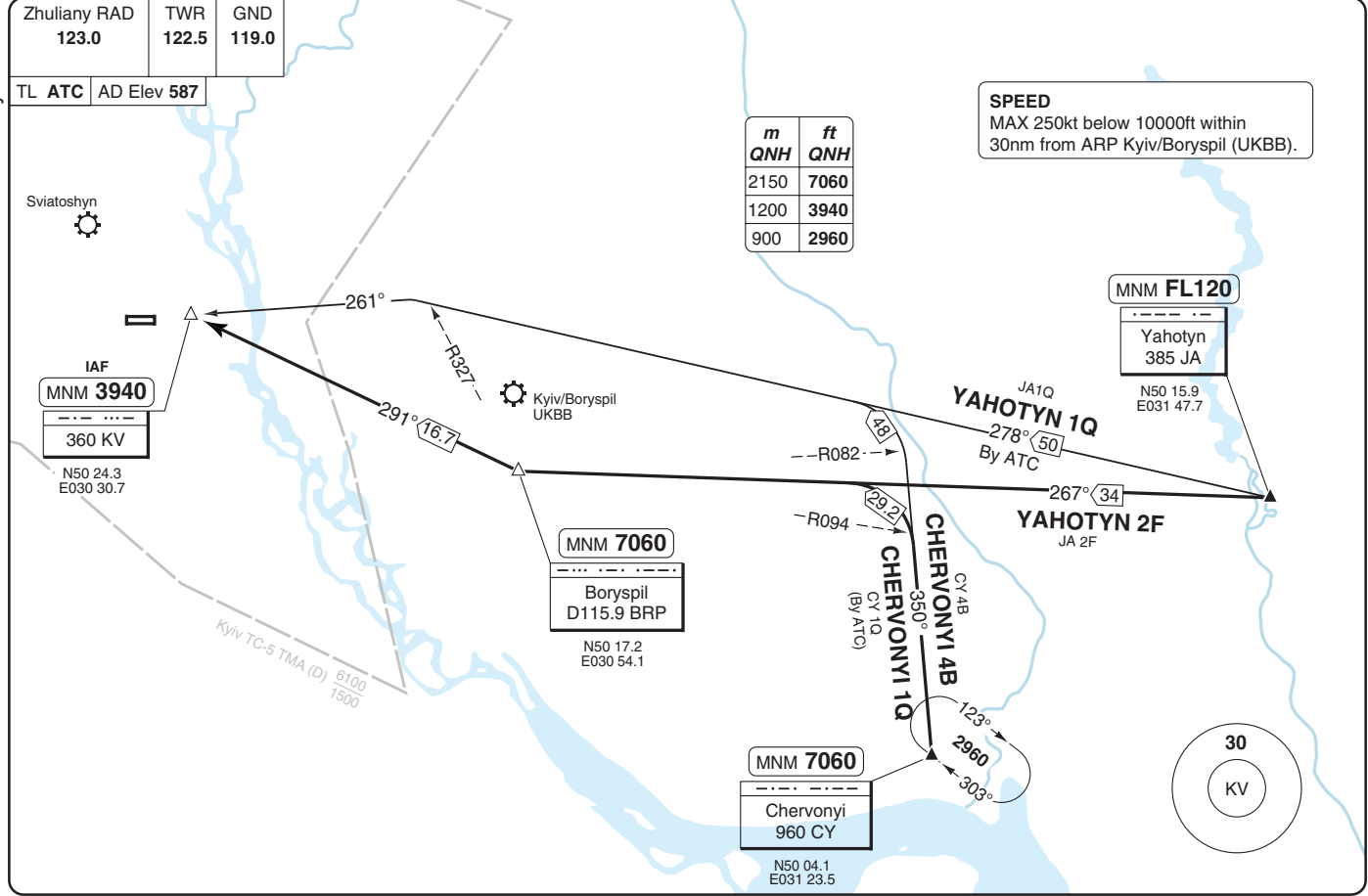
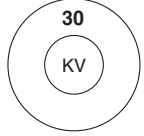
**MNM FL120**  
Yahotyn  
385 JA  
N50 15.9  
E031 47.7

JA1Q  
**YAHOTYN 1Q**  
278°/50  
By ATC

JA 2F  
**YAHOTYN 2F**

CY 4B  
**CHERVONYI 4B**  
CY 1Q  
**CHERVONYI 1Q**  
(By ATC)

**MNM 7060**  
Chervonyi  
960 CY  
N50 04.1  
E031 23.5



© Navtech - ukkk4aaraorg

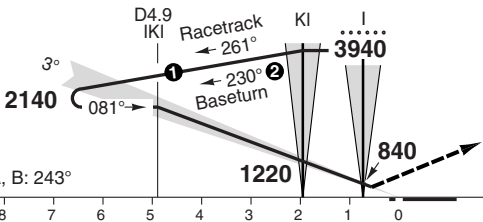
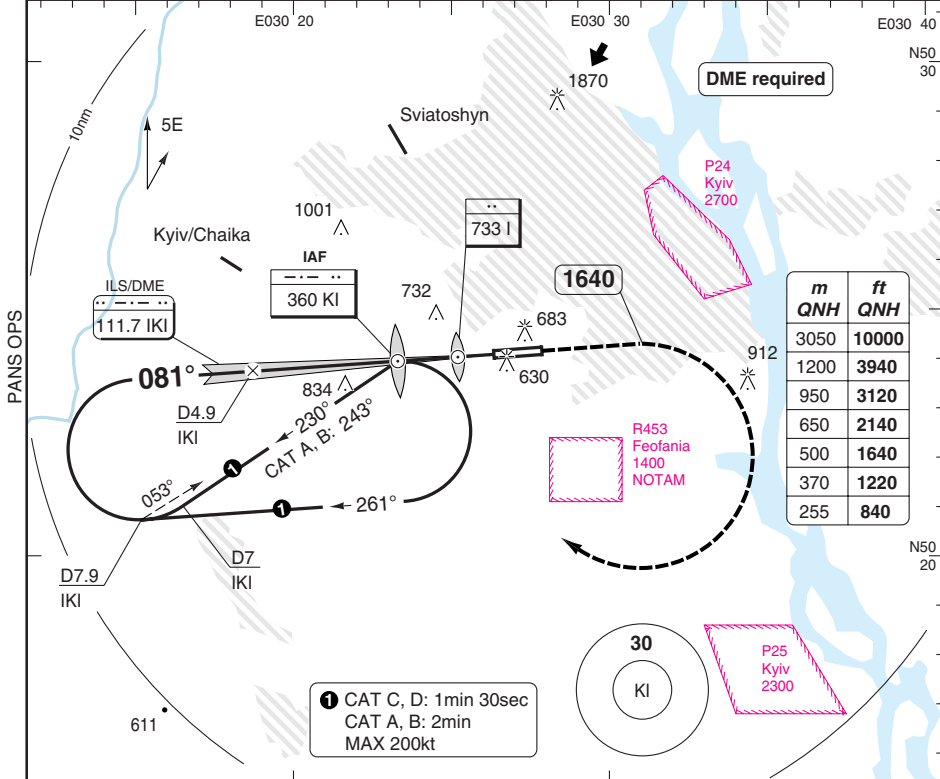
Change: New spec.

THIS CHART IS A PART OF NAVIGRAPH NDAC AND IS INTENDED FOR FLIGHT SIMULATION USE ONLY

# ILS RWY 08

Zhuliany RAD <b>123.0</b>	TWR <b>122.5</b>	GND <b>119.0</b>
------------------------------	---------------------	---------------------

ILS/DME <b>111.7 IKI</b>	FAT <b>081°</b>	DTHR Elev <b>560</b>	AD Elev <b>587</b>	TL ATC	TA <b>10000</b>
--------------------------	-----------------	----------------------	--------------------	--------	-----------------

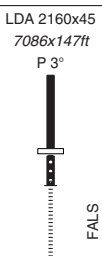


Climb on 081° to **1640**, then turn right (MAX 200kt) to **KI** climbing to **3120**.

nm	9	8	7	6	5	4	3	2	1	0	TCH 49
----	---	---	---	---	---	---	---	---	---	---	--------

ACFT	ILS
A	<b>770</b> (200) 550m
B	<b>780</b> (210) 550m
C	<b>790</b> (220) 550m
D	<b>800</b> (230) 550m

Note: Circling NA



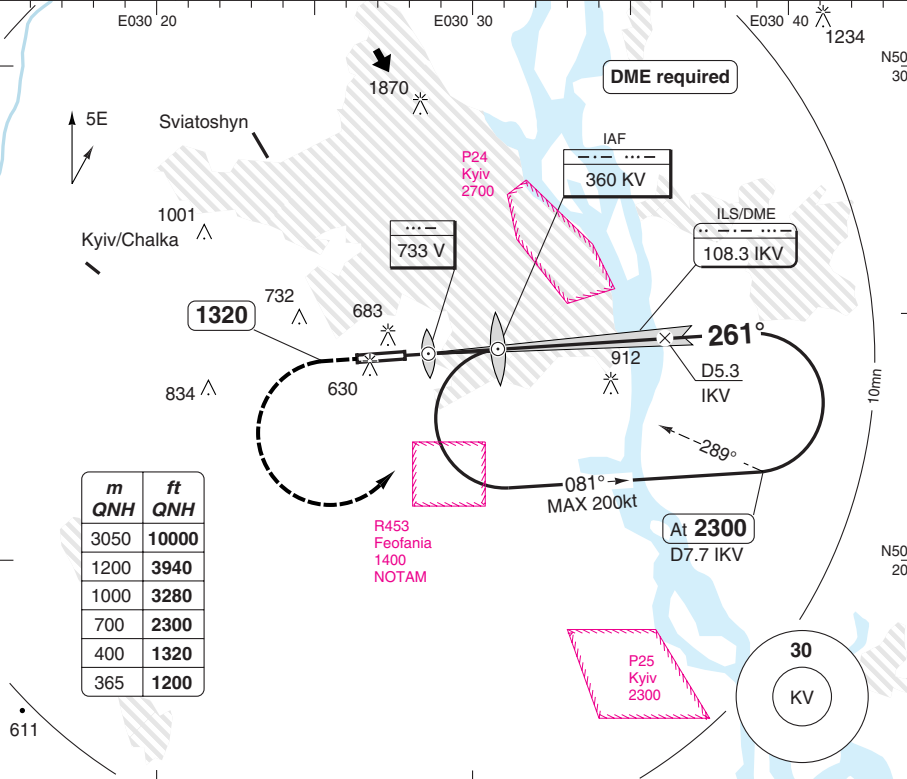
© Navtech - ukkk01aiip00

50 - 1

# ILS RWY 26

Zhuliany RAD <b>123.0</b>	TWR <b>122.5</b>	GND <b>119.0</b>
------------------------------	---------------------	---------------------

ILS/DME <b>108.3 IKV</b>	FAT <b>261°</b>	DTHR Elev <b>587</b>	AD Elev <b>587</b>	TL <b>ATC</b>	TA <b>10000</b>
--------------------------	-----------------	----------------------	--------------------	---------------	-----------------

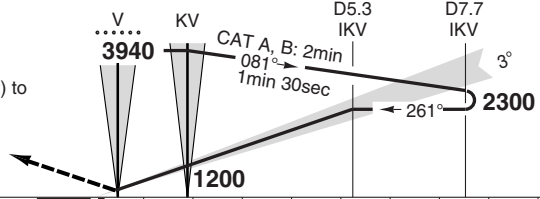


m	ft
3050	10000
1200	3940
1000	3280
700	2300
400	1320
365	1200

50 - 2

MAPt D0.5 IKV

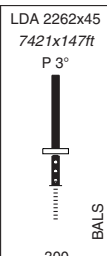
Climb on 261° to **1320**, then turn left (MAX 200kt) to **KV** climbing to **3280**.



TCH 53

ACFT	<b>ILS</b>
A	
B	<b>790 (200)</b>
C	1000m
D	

Note: Circling NA

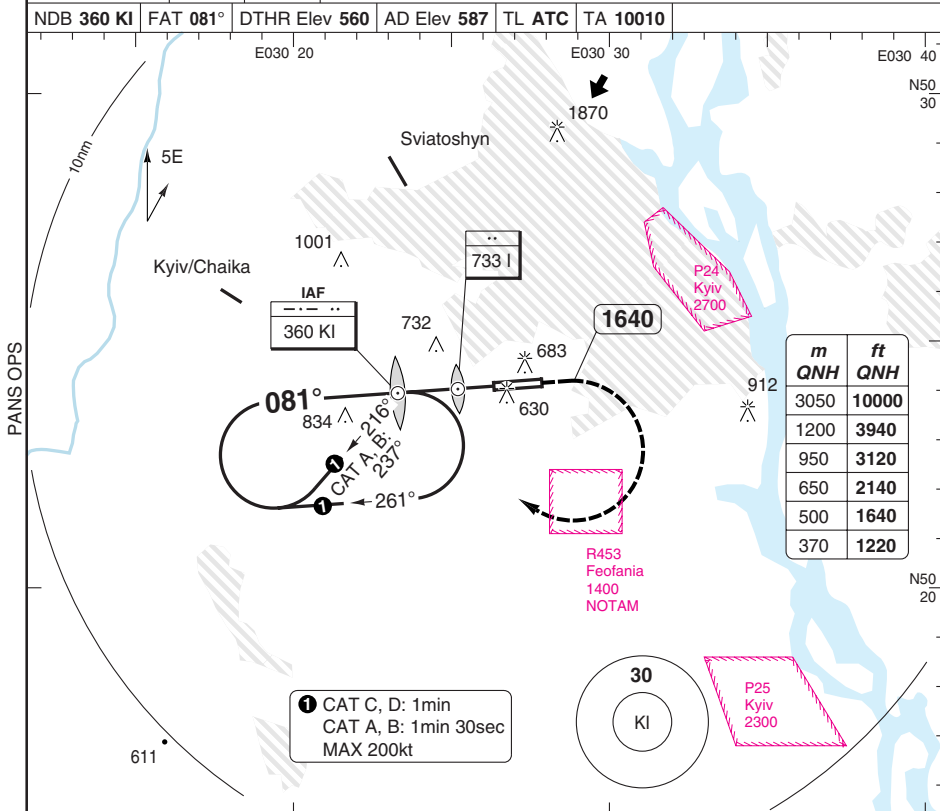


© Navtech - ukkk02aip00 EU OPS

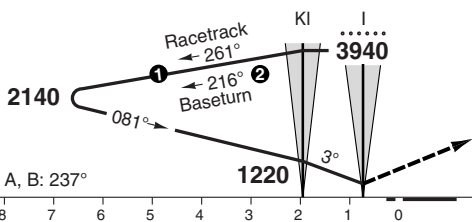
Change: Minima.

# NDB RWY 08

Zhuliany RAD <b>123.0</b>	TWR <b>122.5</b>	GND <b>119.0</b>
NDB <b>360 KI</b>	FAT <b>081°</b>	DTHR Elev <b>560</b>
AD Elev <b>587</b>		TL ATC
TA <b>10010</b>		



① CAT C, D: 1min  
CAT A, B: 1min 30sec  
MAX 200kt



Climb on 081° to 1640, then turn right (MAX 200kt) to KI climbing to 3120.

ACFT	2NDB	NDB I	NDB I <b>a</b>
A			1140 (574) 2100m
B	990 (427) 1300m	1140 (574) 1900m	
C			1140 (574) 2300m
D			

GS	80	100	120	140	160
ROD 3.0°	430	540	650	750	860
KI +20s	1080	1050	1010	-	-
+40s	-	-	-	-	-
+60s	-	-	-	-	-
KI- 990	0:32	0:26	0:22	0:18	0:16
KI-MAPT	0:53	0:43	0:35	0:31	0:26

LDA 2160x45 7086x147ft P 3°
-----------------------------------

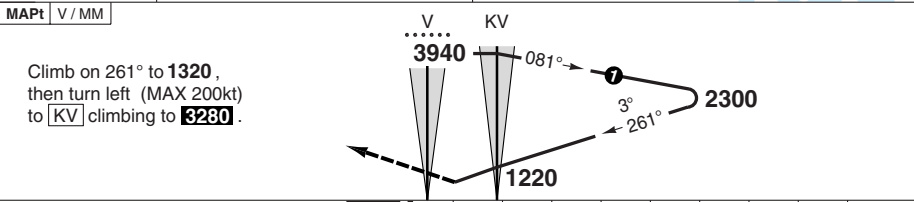
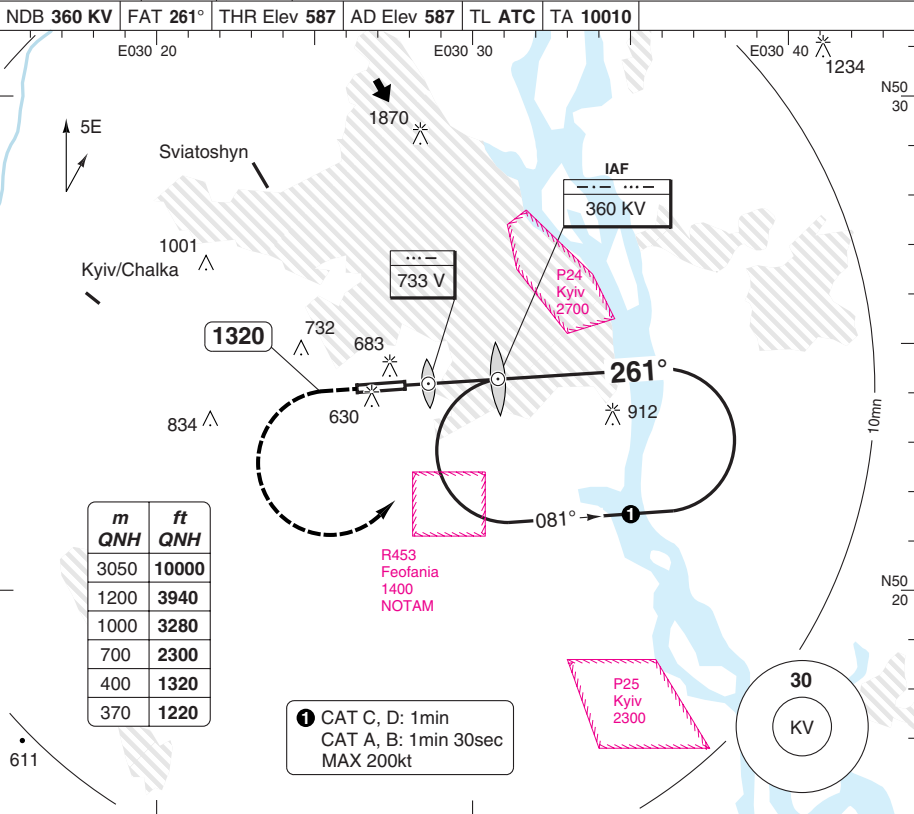
Note: Circling NA  
**a** Non CDFA.

© Navtech - ukkk03aiap00  
**EU OPS**

Change: Minima.

# NDB RWY 26

Zhuliany RAD 123.0	TWR 122.5	GND 119.0
NDB 360 KV	FAT 261°	THR Elev 587
AD Elev 587	TL ATC	TA 10010



ACFT	2NDB	NDB V	NDB V ⓐ	GS	80	100	120	140	160	LDA 2262x45 7421x147ft P 3°
A	1100 (509) 2100m	1220 (623) 2700m	1220 (623) 2900m	ROD 3.2°	460	580	690	810	920	
B				KV +20s	-	-	-	-	-	
C			+40s	-	-	-	-	-		
D			+60s	-	-	-	-	-		
			1220 (623) 3100m	KV- 1090	0:17	0:13	0:11	0:10	0:08	
				KV-MAPt	1:03	0:50	0:42	0:36	0:31	

Note: Circling NA  
ⓐ Non CDFA.

Change: Minima.

PANS OPS

50 - 4

© Navtech - ukkk04iap00  
EU OPS

BALS

300