

## Airport information:

Country: Ukraine

City: DNIPROPETROVSK

Coordinates: N 48° 21.4', E035 06.1

Elevation: 481

Customs: Customs

Fuel: TS-1 (equivqalent to Jet A1)

RFF: CAT 6

hours: H24

## Runways:

Runway 08

Takeoff length: 2858, Landing length: 2858

Runway 26

Takeoff length: 2858, Landing length: 2858

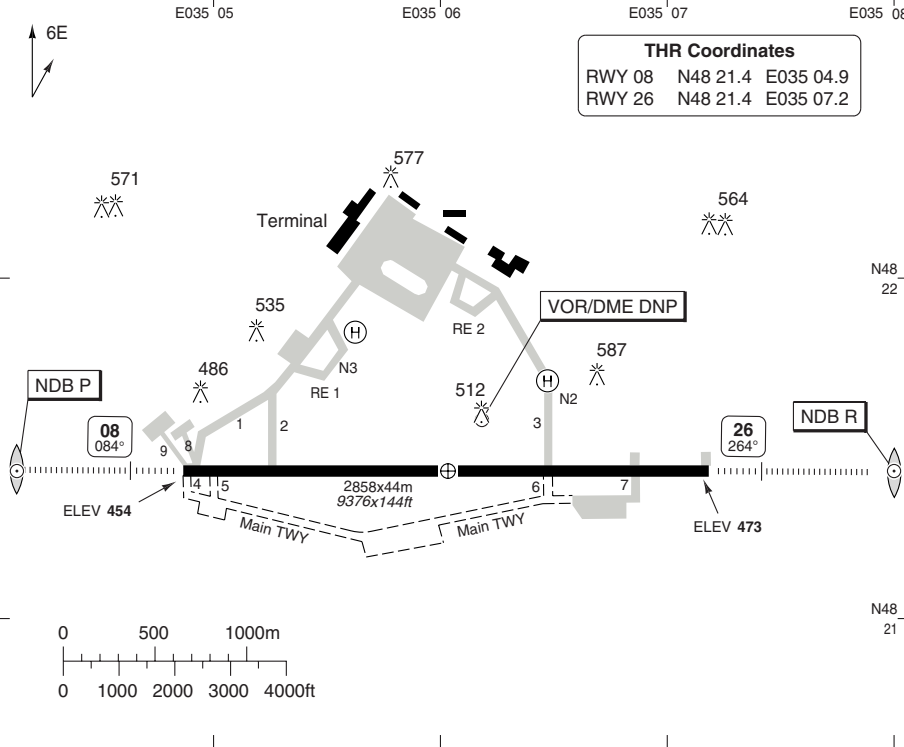
# AERODROME

# DNIPROPETROVSK

10 - 1

Dnipro GND <b>121.8</b>	TWR <b>118.6</b>	RAD <b>119.4</b>	MET <b>134.9</b>
----------------------------	---------------------	---------------------	---------------------

AD Elev <b>481</b>	ARP: N48 21.4 E035 06.0	RFF: CAT 6	AD HR: H24
--------------------	-------------------------	------------	------------



RWY	Slope	TORA m/ft	LDA m/ft	ALS	REDL	Additional
08	+0.2	2858 / 9376	2858 / 9376	H-D ①	H	P 2.8°
26	-0.2	2858 / 9376	2858 / 9376	H-D ①	H	P 3°

① No EFAS.

**EU OPS TAKE OFF MINIMA**

RWY	Facilities	RVR		
		A B C	D	
08/26	RCL (day only) or RCL + REDL	<b>LVTO</b>	250 m	300 m
	RCL (day only) or RCL + REDL		400 m	400 m
	NIL (day only)		500 m	500 m

© Navtech - ukdd01aorgo

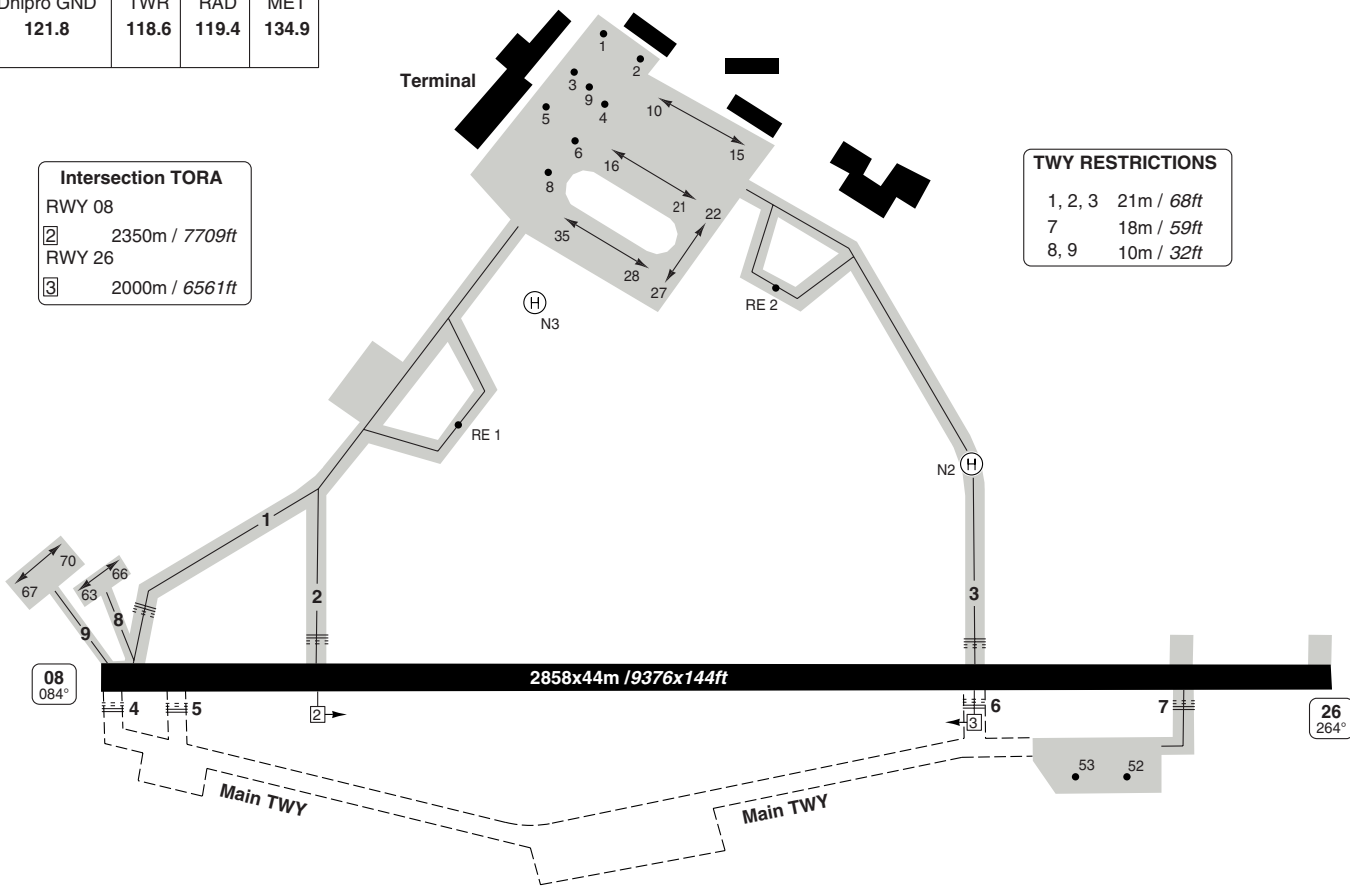
Change: New spec.

**THIS CHART IS A PART OF NAVIGRAPH NDAC AND IS INTENDED FOR FLIGHT SIMULATION USE ONLY**

Dnipro GND	TWR	RAD	MET
121.8	118.6	119.4	134.9

Intersection TORA	
RWY 08	
②	2350m / 7709ft
RWY 26	
③	2000m / 6561ft

TWY RESTRICTIONS	
1, 2, 3	21m / 68ft
7	18m / 59ft
8, 9	10m / 32ft



## GENERAL

## DNIPROPETROVSK

## GENERAL

**1. WARNING**

- 1.1 Bird hazard.
- 1.2 Short term activation of GPWS between 300m/990ft – 200m/660ft on initial final APCH RWY 26 due to terrain profile.

**2. ALTIMETER SETTING**

Trans Alt and clearances are given in feet QNH. QFE and metres available on request. Standard ICAO FL (feet) system used above TA/TL.

**3. TWY RESTRICTION**

- 3.1 TWY 1, 2, 3 width 21m/68ft.
- 3.2 TWY 7 width 18m/59ft.
- 3.3 TWY 8 and 9 width 10m/32ft.

**4. TAXIING**

- 4.1 ACFT movement at AD by taxiing or towing.
- 4.2 Taxiing via TWY under own thrust power.
- 4.3 Taxiing via TWY 1-3, 7 for ACFT type 4-6 on inner engines with caution.

**5. NOISE ABATEMENT PROCEDURE**

- 5.1 Reverse thrust is not to be used unless for safety reasons.
- 5.2 Use of auxiliary power plant is to be limited, 30min before departure and 30min after landing.
- 5.3 Taxiing of 3-engine ACFT is to be proceed using two side engines.
- 5.4 Run-up engines with TKOF power is prohibited.
- 5.5 While taxiing from ACFT stands 3, 5, 8, 9 the engines power shall be not more 0.6 of rated power.

**6. LOW VIS PROCEDURE**

LVP commences when RVR is less than 400m,

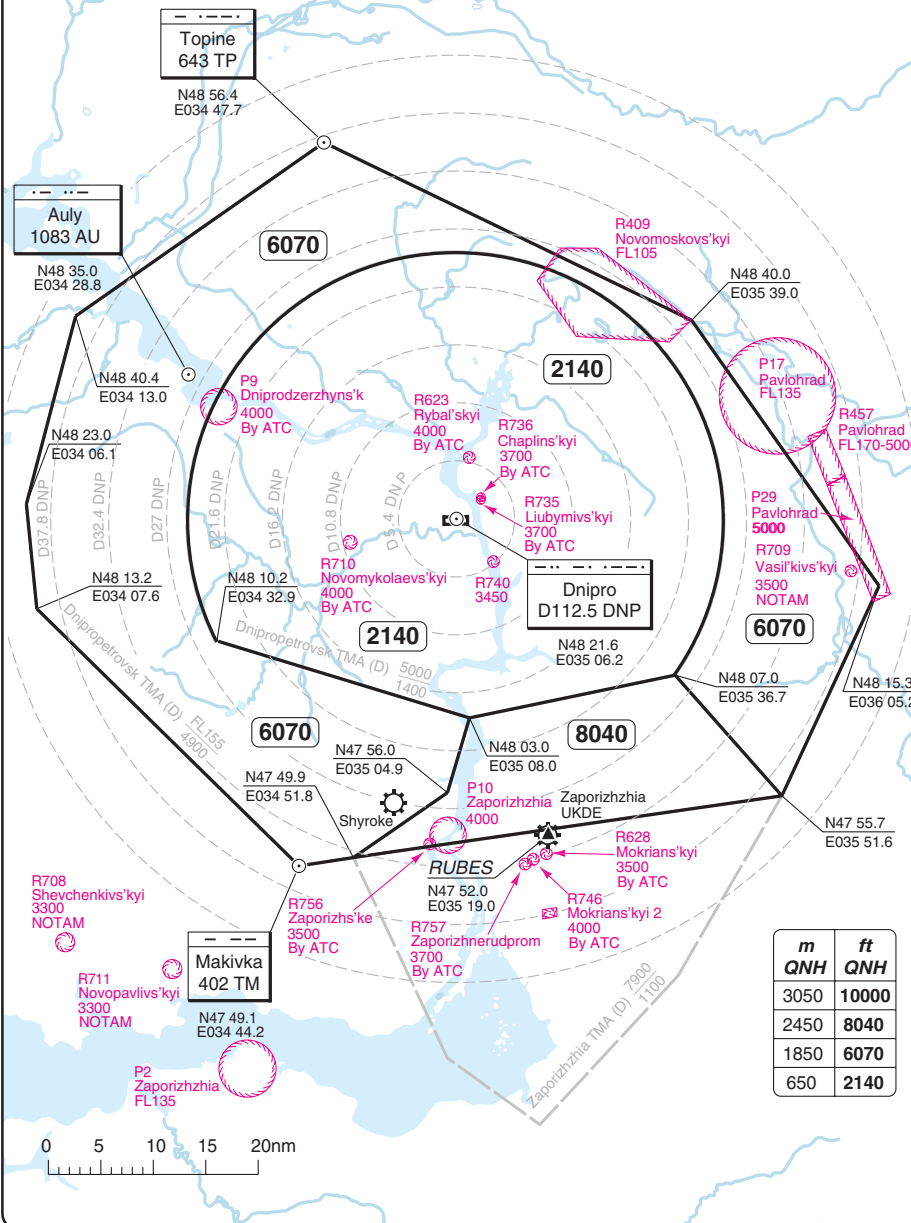
# RADAR Minimum Altitudes

# DNIPROPETROVSK

Dnipro RAD	TWR	GND
119.4	118.6	121.8
TL ATC	AD Elev 481	

**NOTE**  
Visual manoeuvring (circling) and visual APP not authorized within sector R280-R045/ D10.8 DPN

**NOTE**  
Chart only to be used for cross checking of altitudes assigned while under radar control



m	ft
3050	10000
2450	8040
1850	6070
650	2140

20 - 1

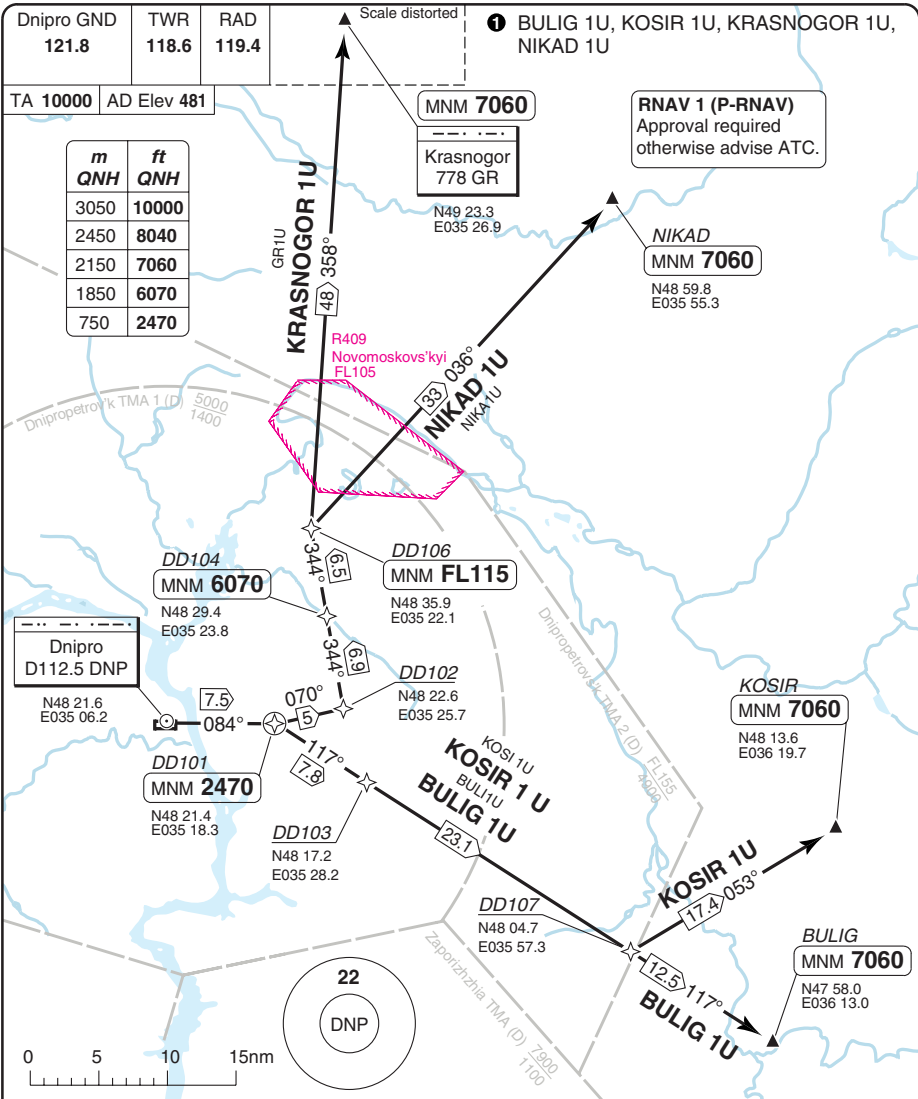
© Navitech - ukdd01vaorgo

Reverse side blank

Change: New spec.

**THIS CHART IS A PART OF NAVIGRAPH NDAC AND IS INTENDED FOR FLIGHT SIMULATION USE ONLY**

# SID RWY 08 **RNAV** GNSS TRIAL PROC DNIPROPETROVSK



**NOTE:** If unable to comply MNM climb gradient contact ATC.

SID	MNM Climb	Routeing	Altitude
<b>(INITIAL CLIMB)</b>		Climb on 084° - DD101 - follow SID.	DD101 MNM 2470
<b>BULIG 1U</b>	4.5% to 2470	DD103 - DD107 - BULIG.	BULIG MNM 7060
<b>KOSIR 1U</b>	4.5% to 2470	DD103 - DD107 - KOSIR.	KOSIR MNM 7060
<b>KRASNOGOR 1U</b>	7.5% to FL115	DD102 - DD104 - DD106 - GR.	DD104 MNM 6070 DD106 MNM FL115 GR MNM 7060
<b>NIKAD 1U</b>	7.5% to FL115	DD102 - DD104 - DD106 - NIKAD.	DD104 MNM 6070 DD106 MNM FL115 NIKAD MNM 7060

Change: New spec.

**THIS CHART IS A PART OF NAVIGRAPH NDAC AND IS INTENDED FOR FLIGHT SIMULATION USE ONLY**

SID Rwy 08 **ENAV** GNSS

1 TRAIL PROC

DNIPROPETROVSK

Dnipro GND 121.8	TWR 118.6	RAD 119.4
---------------------	--------------	--------------

TA 10000 AD Elev 481

m	ft
QNH	QNH
3050	10000
2450	8040
2150	7060
750	2470

TIRPU  
MNM FL120  
N48 06.5  
E033 33.0

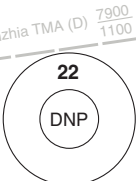
TIRPU 1Y  
264° 63

Dnipro  
D112.5 DNP  
N48 21.6  
E035 06.2

DD109  
MNM 8040  
N48 07.1  
E035 06.6

DD101  
MNM 2470  
N48 21.4  
E035 18.3

DD108  
N48 07.1  
E035 24.5



MNM 8040  
Makivka  
402 TM  
N47 49.1  
E034 44.2

RUBES  
MNM 7060  
N47 52.0  
E035 19.0

R708  
Shevchenkiv's'kyi  
3300  
NOTAM

TADID  
MNM FL120  
N47 35.7  
E033 55.4



MNM CLIMB GRADIENT: 4.5% to 2470. ( If unable to comply contact ATC.)

SID	Routeing	Altitude
(INITIAL CLIMB)	Climb on 084° - DD101 - DD103 - DD108 - follow SID.	DD101 MNM 2470
MAKIVKA 1U	DD109 - TM.	DD109 MNM 8040 TM MNM 8040
RUBES 1U	RUBES.	RUBES MNM 7060
TADID 1U	DD109 - TADID.	DD109 MNM 8040 TADID MNM FL120
TIRPU 1Y	DD109 - TIRPU.	DD109 MNM 8040 TIRPU MNM FL120

Change: New spec.

© Navtech - ukdd03daorg0

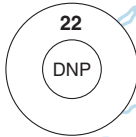
Dnipro GND	TWR	RAD
121.8	118.6	119.4

TA 10000 AD Elev 481

m	ft
QNH	QNH
3050	10000
2450	8040
1850	6070
750	2470

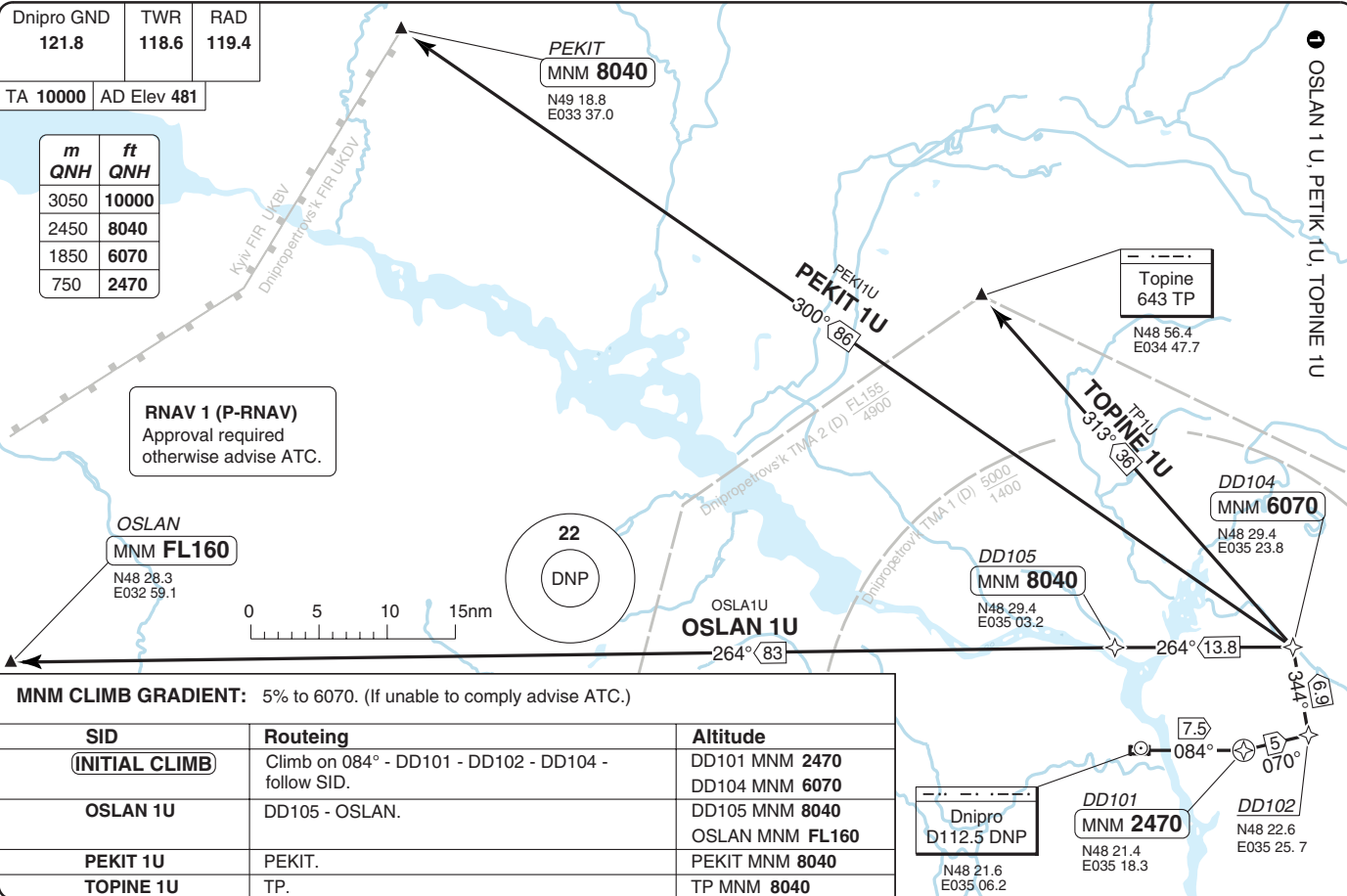
**RNAV 1 (P-RNAV)**  
Approval required  
otherwise advise ATC.

**OSLAN**  
MNM **FL160**  
N48 28.3  
E032 59.1



**MNM CLIMB GRADIENT:** 5% to 6070. (If unable to comply advise ATC.)

SID	Routing	Altitude
<b>(INITIAL CLIMB)</b>	Climb on 084° - DD101 - DD102 - DD104 - follow SID.	DD101 MNM 2470 DD104 MNM 6070
<b>OSLAN 1U</b>	DD105 - OSLAN.	DD105 MNM 8040 OSLAN MNM <b>FL160</b>
<b>PEKIT 1U</b>	PEKIT.	PEKIT MNM 8040
<b>TOPINE 1U</b>	TP.	TP MNM 8040



SID Rwy 08 ENAV GNSS TRIAL PROC Dnipropetrovsk  
 Ukraine - UKDD / DNK  
 30 - 3 | 21 MAR 12

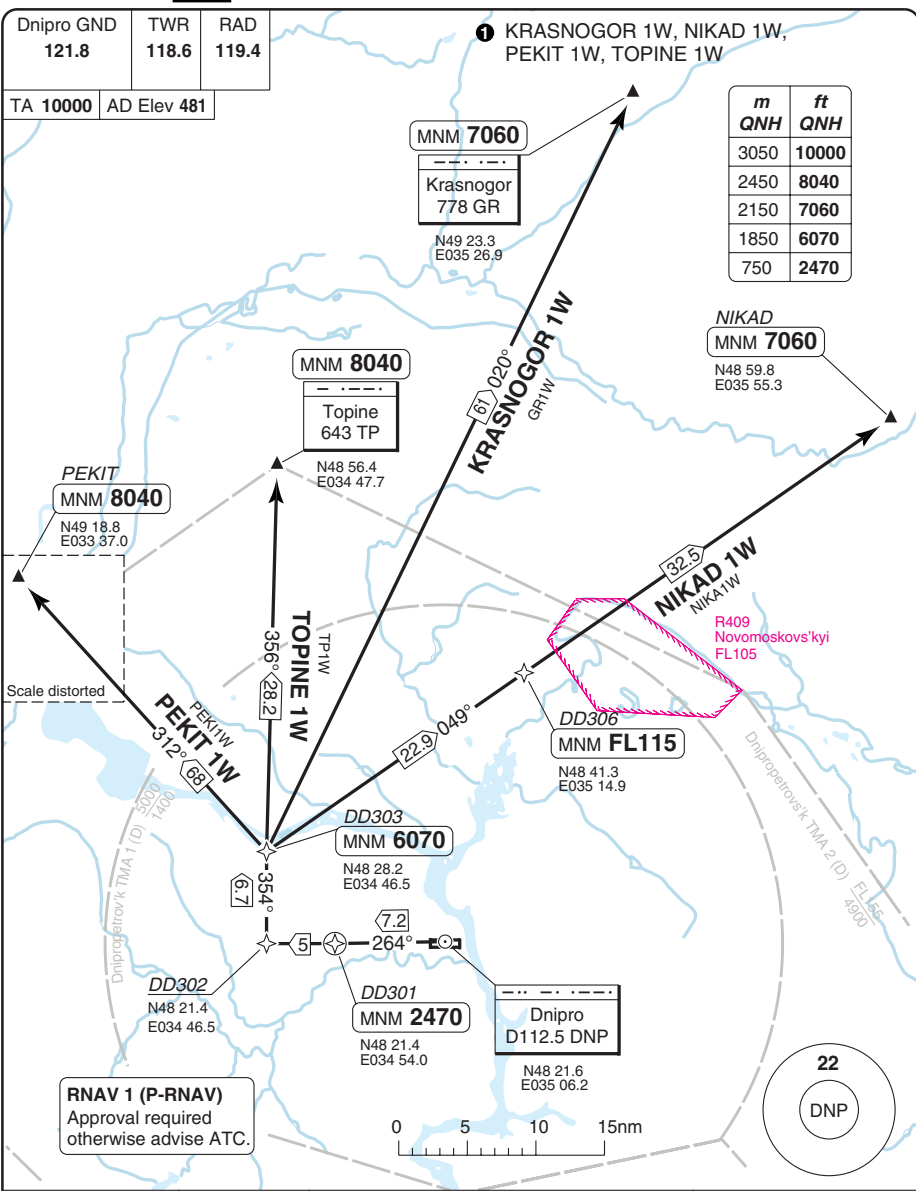


# SID RWY 26 **RNAV** GNSS <sup>1</sup> TRIAL PROC DNIPROPETROVSK

Dnipro GND 121.8	TWR 118.6	RAD 119.4
---------------------	--------------	--------------

TA 10000	AD Elev 481
----------	-------------

m	ft
3050	10000
2450	8040
2150	7060
1850	6070
750	2470



30 - 5

**RNAV 1 (P-RNAV)**  
Approval required  
otherwise advise ATC.

SID	MNM Climb	Routeing	Altitude
<b>(INITIAL CLIMB)</b>		Climb on 264° - DD301 - DD302 - DD303 - follow SID.	DD301 MNM 2470 DD303 MNM 6070
<b>KRASNOGOR 1W</b>	5% to 6070	GR.	GR MNM 7060
<b>NIKAD 1W</b>	5% to FL115	DD306 - NIKAD.	DD306 MNM FL115 NIKAD MNM 7060
<b>PEKIT 1W</b>	5% to 6070	PEKIT.	PEKIT MNM 8040
<b>TOPINE 1W</b>	5% to 6070	TP.	TP MNM 8040

Change: New spec.

**THIS CHART IS A PART OF NAVIGRAPH NDAC AND IS INTENDED FOR FLIGHT SIMULATION USE ONLY**

SID Rwy 26 **RNAV** GNSS TRIAL PROC

DNIPROPETROVSK

Dnipro GND 121.8	TWR 118.6	RAD 119.4
---------------------	--------------	--------------

TA 10000 AD Elev 481

**RNAV 1 (P-RNAV)**  
Approval required  
otherwise advise ATC.

1 OSLAN 1W, TADID 1W, TIRPU 1W

**OSLAN**  
MNM **FL160**  
N48 28.3  
E032 59.1

**TIRPU**  
MNM **FL120**  
N48 06.5  
E033 33.0

**OSLAN 1W**  
OSLA1W

**TIRPU 1W**  
TIRPU1W

**TADID**  
MNM **FL120**  
N47 35.7  
E033 55.4

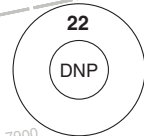
**DD305**  
MNM **8040**  
N48 23.7  
E034 11.7

**DD302**  
N48 21.4  
E034 46.5

**DD301**  
MNM **2470**  
N48 21.4  
E034 55.0

Dnipro  
D112.5 DNP  
N48 21.6  
E035 06.2

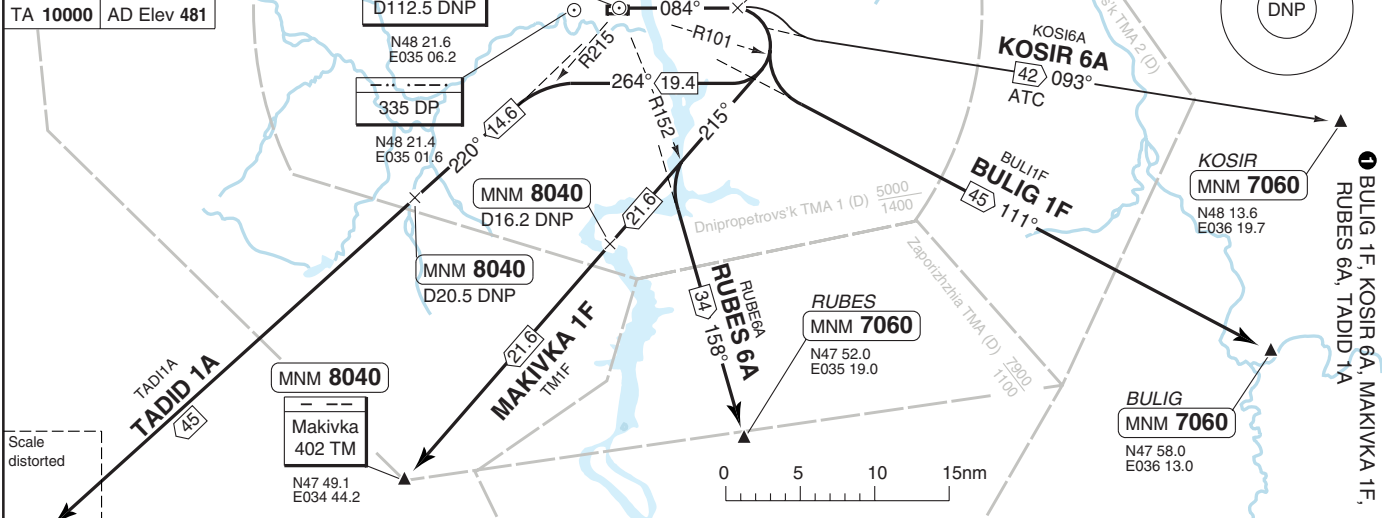
m	ft
3050	10000
2450	8040
1850	6070
750	2470



**MNM CLIMB GRADIENT:** 5% to 2470. (If unable to comply advise ATC.)

SID	Routeing	Altitude
<b>(INITIAL CLIMB)</b>	Climb on 264° - DD301 - DD302 - follow SID.	DD301 MNM <b>2470</b>
<b>OSLAN 1W</b>	DD305 - OSLAN.	DD305 MNM <b>8040</b> OSLAN MNM <b>FL160</b>
<b>TADID 1W</b>	TADID.	TADID MNM <b>FL120</b>
<b>TIRPU 1W</b>	TIRPU.	TIRPU MNM <b>FL120</b>

Dnipro GND **121.8** TWR **118.6** RAD **119.4**  
 TA **10000** AD Elev **481**



Scale distorted

m	ft	QNH
3050	10000	
2450	8040	
2150	7060	
1850	6070	
750	2470	

**NOTE:** If unable to comply MNM climb gradient advise ATC.

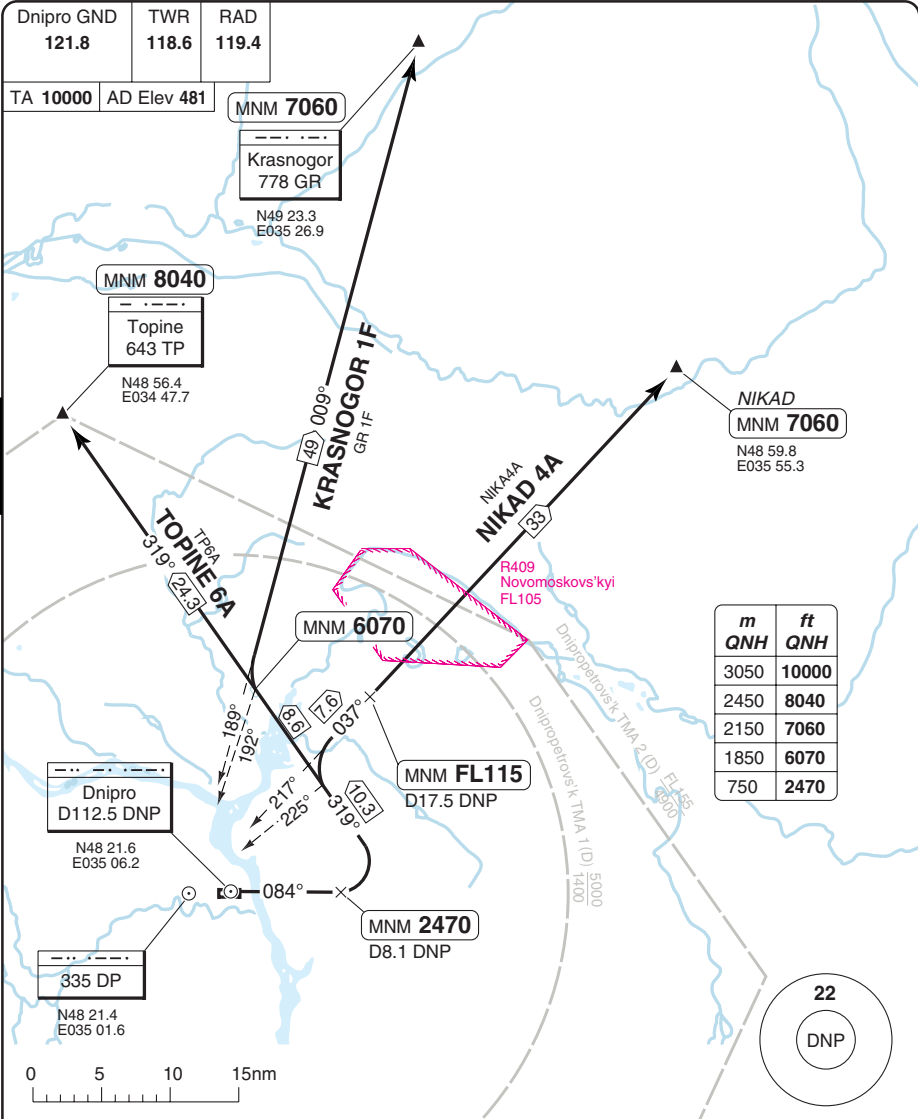
SID	MNM Climb	Routeing	Altitude
<b>(INITIAL CLIMB)</b>		Climb on 084°/264° to DP - at D8.1 DNP turn right - follow SID.	D8.1 DNP MNM 2470
<b>BULIG 1F</b>	4.5% to 2470	At R101 turn left - intcp R111 DNP - BULIG.	BULIG MNM 7060
<b>KOSIR 6A (ATC)</b>		093° - KOSIR.	KOSIR MNM 7060
<b>MAKIVKA 1F</b>	4.5% to 8040	215° to MAKIVKA.	D16.2 DNP MNM 8040 MAKIVKA MNM 8040
<b>RUBES 6A</b>	4.5% to 2470	215° to TM - at R152 DNP turn left - intcp R158 DNP - RUBES.	RUBES MNM 7060
<b>TADID 1A</b>	4.5% to 2470	264° - at R215 DNP turn left - intcp R220 DNP - TADID.	D20.5 DNP MNM 8040 TADID MNM FL120

SID RWY 08

30 - 7 | 21 MAR 12

DNIROPETROVSK  
Ukraine - UKDD / DNK

SID RWY 08 KRASNOGOR 1F, NIKAD 4A, TOPINE 6A DNIPROPETROVSK



NOTE: If unable to comply MNM climb gradient contact ATC.

SID	MNM Climb	Routeing	Altitude
<b>(INITIAL CLIMB)</b>		Climb on 084°/264° to DP - at D8.1 DNP turn left - 319° - follow SID.	D8.1 DNP MNM 2470
<b>KRASNOGOR 1F</b>	4.5% to 2470	At 192° to DP - turn right - 009° - GR.	192° to DP MNM 6070 GR MNM 7060
<b>NIKAD 4A</b>	7.5% to FL115	At 225° to DP turn right - 037°/217° to DP - NIKAD.	D17.5 DNP MNM FL115 NIKAD MNM 6070
<b>TOPINE 6A</b>	4.5% to 2470	TP.	192° to DP MNM 6070 TP MNM 8040

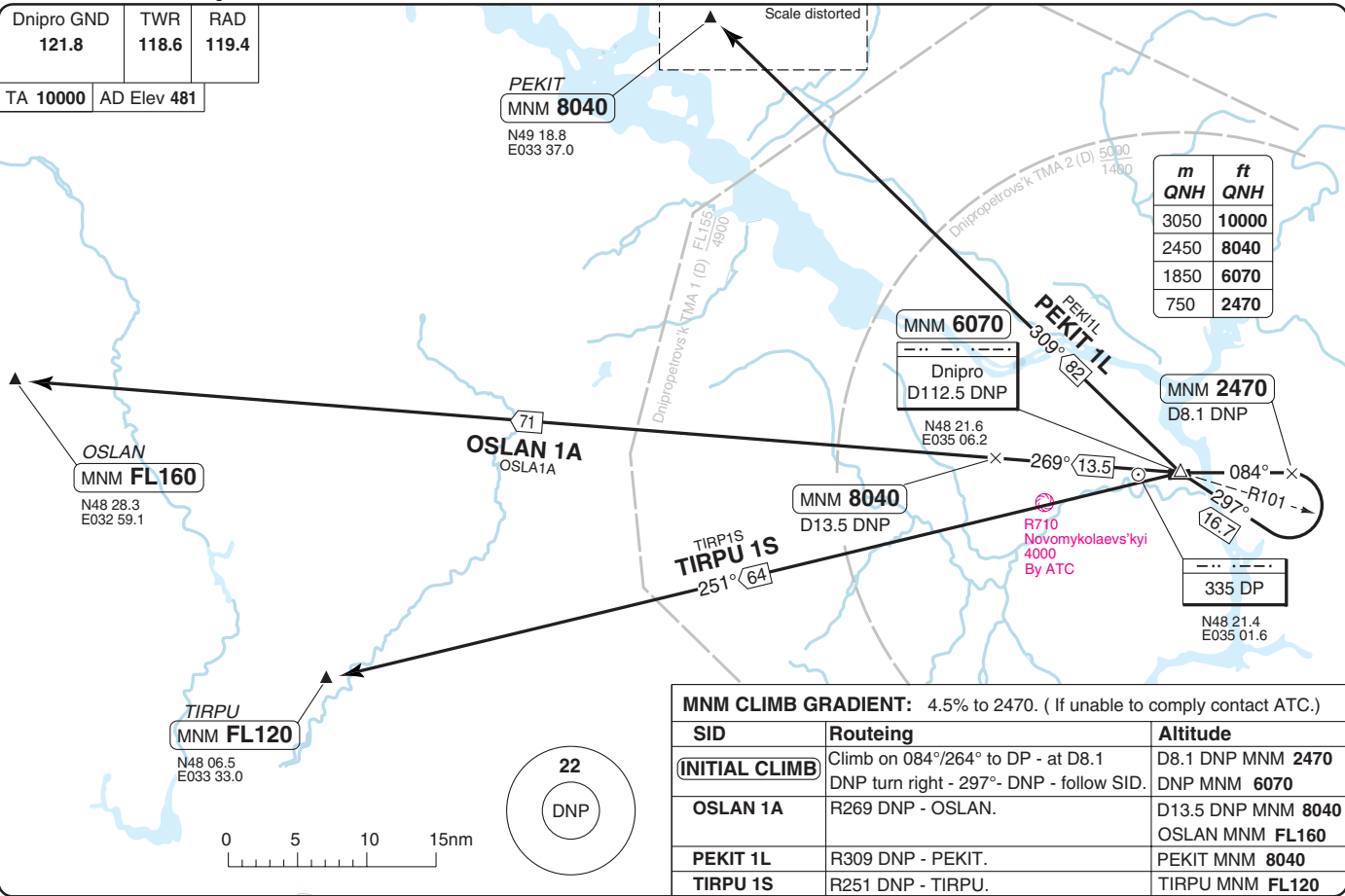
Change: New spec.

**THIS CHART IS A PART OF NAVIGRAPH NDAC AND IS INTENDED FOR FLIGHT SIMULATION USE ONLY**

Change: New spec.

Dnipro GND <b>121.8</b>	TWR <b>118.6</b>	RAD <b>119.4</b>
----------------------------	---------------------	---------------------

TA **10000** AD Elev **481**



m	ft
3050	10000
2450	8040
1850	6070
750	2470

MNM CLIMB GRADIENT: 4.5% to 2470. ( If unable to comply contact ATC.)		
SID	Routeing	Altitude
<b>(INITIAL CLIMB)</b>	Climb on 084°/264° to DP - at D8.1 DNP turn right - 297°- DNP - follow SID.	D8.1 DNP MNM <b>2470</b> DNP MNM <b>6070</b>
<b>OSLAN 1A</b>	R269 DNP - OSLAN.	D13.5 DNP MNM <b>8040</b> OSLAN MNM <b>FL160</b>
<b>PEKIT 1L</b>	R309 DNP - PEKIT.	PEKIT MNM <b>8040</b>
<b>TIRPU 1S</b>	R251 DNP - TIRPU.	TIRPU MNM <b>FL120</b>

SID RWY 08 OSLAN 1A, PEKIT 1L, TIRPU 1S

30 - 9 | 21 MAR 12

DNIPROPETROVSK

Ukraine - UKDD / DNK

30 - 10 | 21 MAR 12

Ukraine - UKDD / DNK

# SID RWY 26

# DNIPROPETROVSK

Dnipro GND	TWR	RAD
121.8	118.6	119.4

TA 10000 AD Elev 481

Scale distorted!

1 BULIG 1Q, KOSIR 1E, KRASNOGOR 1Q, NIKAD 1C.

**MNMM 7060**  
Krasnogor  
778 GR  
N48 23.3  
E035 26.9

**NIKAD**  
**MNMM 7060**  
N48 59.8  
E035 55.3

	ft
<b>QNH</b>	10000
<b>QNH</b>	7060
<b>QNH</b>	6070
<b>QNH</b>	2470

**KRASNOGOR 1Q**  
GR 1Q  
44

**MNMM FL115**  
D18.9 DNP

**MNMM FL115**  
D18.4 DNP

**MNMM 6070**  
Dnipro  
D112.5 DNP  
N48 21.6  
E035 06.2

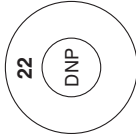
**KOSIR 1E**  
KOSIR 1E  
50  
N48 13.6  
E036 19.7

**MNMM 2470**  
D8.1 DNP

**335 DR**  
N48 21.4  
E035 10.5

**BULLIG**  
**MNMM 7060**  
N47 58.0  
E036 13.0

**BULLIG 1Q**  
57  
111°



0 5 10 15nm

NOTE: If unable to comply MNM climb gradient contact ATC.

© Navtech - ukdtd10aorg

SID	MNM Climb	Routing	Altitude
<b>(INITIAL CLIMB)</b>		Climb on 264°/084° to DR - at D8.1 DNP turn left - 051° - DNP - follow SID.	D8.1 DNP MNM 2470 DNP MNM 6070
<b>BULIG 1Q</b>	5% to 2470	R111 DNP - BULLIG.	BULLIG MNM 7060
<b>KOSIR 1E (ATC)</b>	5% to 2470	R093 DNP - KOSIR.	KOSIR MNM 7060
<b>KRASNOGOR 1Q</b>	5% to FL115	R006 DNP - GR.	D18.9 DNP MNM FL115 GR MNM 7060
<b>NIKAD 1C</b>	5% to FL115	R034 DNP - NIKAD.	D18.4 DNP MNM FL115 NIKAD MNM 7060

Change: New spec.

**THIS CHART IS A PART OF NAVIGRAPH NDAC AND IS INTENDED FOR FLIGHT SIMULATION USE ONLY**

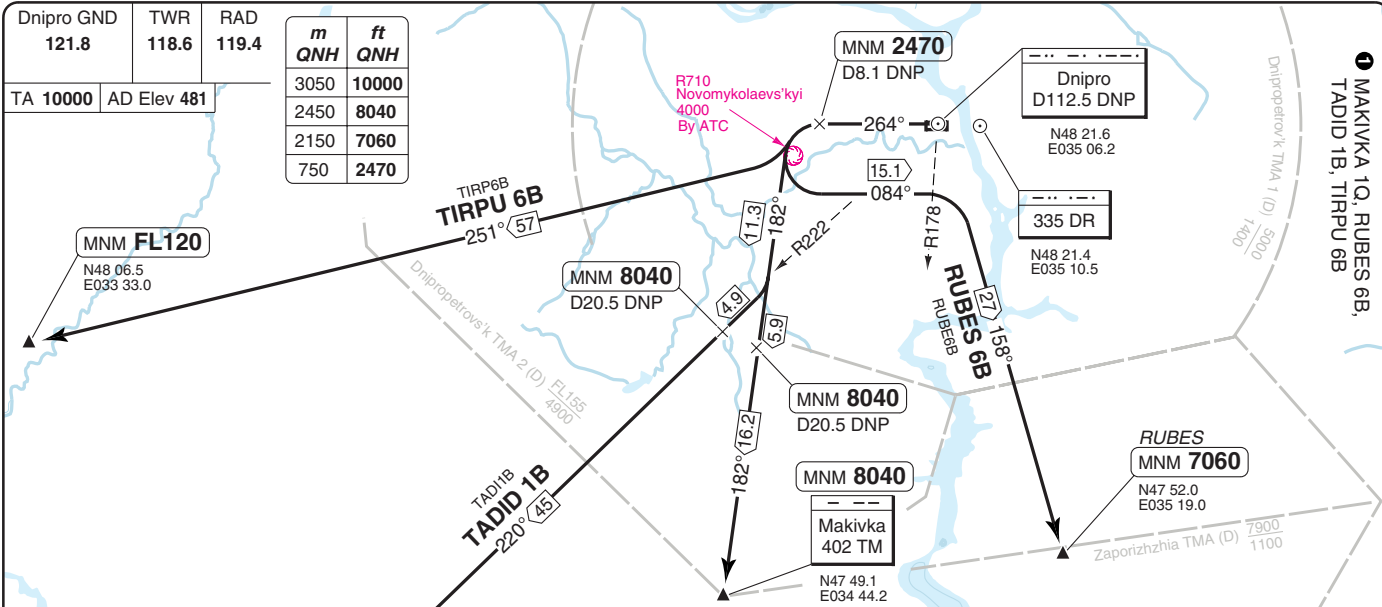
30 - 10

Change: New spec.

© Navtech - ukdd11daorg0

Dnipro GND 121.8	TWR 118.6	RAD 119.4
TA 10000	AD Elev 481	

m	ft
3050	10000
2450	8040
2150	7060
750	2470



**NOTE:** If unable to comply MNM climb gradient contact ATC.

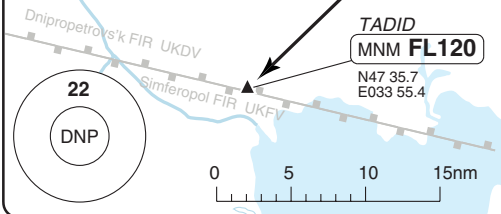
SID	MNM Climb	Routeing	Altitude
<b>INITIAL CLIMB</b>		Climb on 264°/084° to DR - at D8.1 DNP turn left - follow SID.	D8.1 DNP MNM 2470
<b>MAKIVKA 1Q</b>	5.5% to 8040	182° - TM.	D20.5 DNP MNM 8040 TM MNM 8040
<b>RUBES 6B</b>	5% to 2470	084° - at R178 DNP turn right - R158 DNP - RUBES.	RUBES MNM 7060
<b>TADID 1B</b>	5.5% to 8040	182° to TM - at R222 DNP turn right - R220 DNP - TADID.	D20.5 DNP MNM 8040 TADID MNM FL120
<b>TIRPU 6B</b>	5% to 2470	R251 DNP - TIRPU.	TIRPU MNM FL120

**SID Rwy 26**

MAKIVKA 1Q, RUBES 6B,  
TADID 1B, TIRPU 6B

30 - 11 | 21 MAR 12

**DNIPROPETROVSK**  
Ukraine - UKDD / DNK

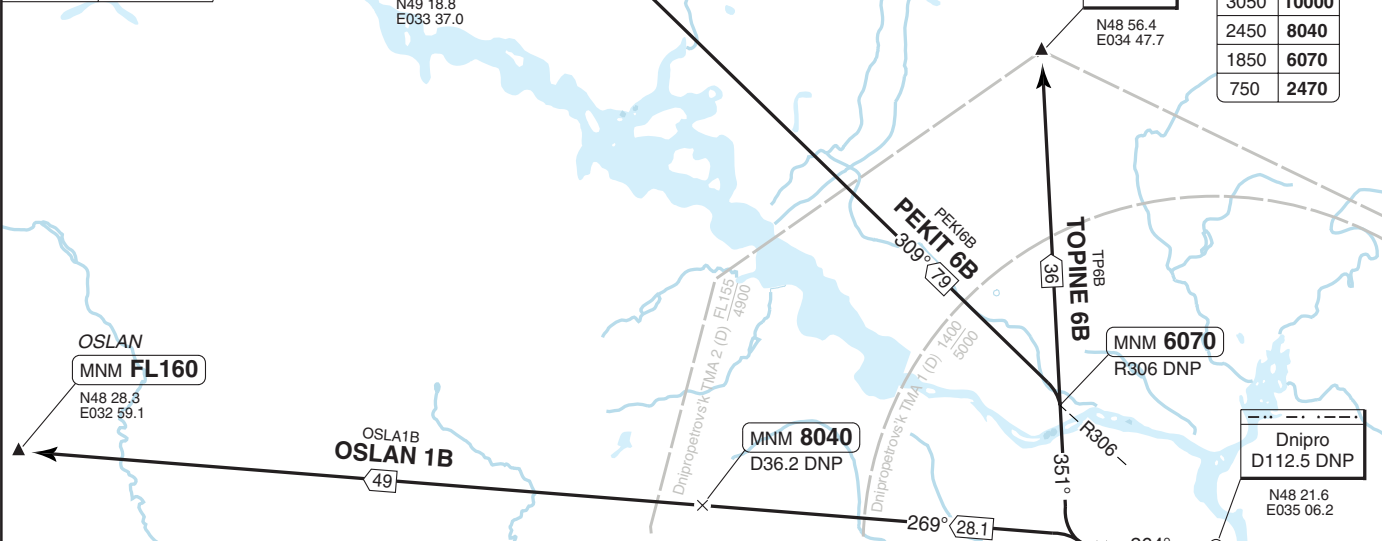


# DNIPROPETROVSK

## SID RWY 26 OSLAN 1B, PEKIT 6B, TOPINE 6B

Dnipro GND 121.8	TWR 118.6	RAD 119.4
---------------------	--------------	--------------

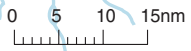
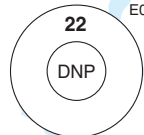
TA 10000 AD Elev 481



m	ft
3050	10000
2450	8040
1850	6070
750	2470

**NOTE:** If unable to comply MNM climb gradient contact ATC.

SID	MNM Climb	Routeing	Altitude
<b>(INITIAL CLIMB)</b>		Climb on 264°/084° to DR - at D8.1 DNP - turn right - follow SID.	D8.1 DNP MNM 2470
<b>OSLAN 1B</b>	5% to 2470	R269 DNP - OSLAN.	D36.2 DNP MNM 8040 OSLAN MNM FL160
<b>PEKIT 6B</b>	5% to 6070	351° - at R306 turn left - R309 DNP - PEKIT.	R306 DNP MNM 6070 PEKIT MNM 8040
<b>TOPINE 6B</b>	5% to 6070	351° - TP.	R306 DNP MNM 2470 TP MNM 8040



THIS CHART IS A PART OF NAVIGRAPH NDAC AND IS INTENDED FOR FLIGHT SIMULATION USE ONLY

Change: New spec.

© Navtech - ukdd01aarg0

Dnipro RAD 119.4	TWR 118.6	GND 121.8
---------------------	--------------	--------------

TL ATC AD Elev 481

RNAV 1 (P-RNAV) approval required otherwise advise ATC.

Warning  
Reversal procedure  
not authorized.

Scale distorted

OSLAN  
MNM FL150

N48 28.3  
E032 59.1

OSLA1X  
OSLAN 1X

54 090°

6070  
269°  
089°

DD206  
MNM 7060

N48 22.7  
E034 19.3

TIRP1X  
TIRPU 1X

47 067°

TIRPU  
MNM FL110

N48 06.5  
E033 33.0

MNM 9030

Auly  
1083 AU

N48 35.0  
E034 28.8

P9  
Dniprodzerzhyn'sk  
4000  
ATC

DD207  
MNM 4930

N48 26.2  
E034 36.2

DD203  
MAX 220kt  
MNM 2960

N48 21.4  
E034 40.2

FAF  
DD201

At 2470

D7.5 DNP

N48 21.4  
E034 55.0

Dnipro  
D112.5 DNP

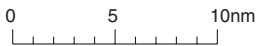
N48 21.6  
E035 06.2

DD202  
At 2470

N48 21.4  
E034 47.7

Dnipropetrovs'k TMA 2 (D) FL155  
4900

Dnipropetrovs'k TMA 1 (D) 5900  
1400



1 AULY 1X, OSLAN 1X, TIRPU 1X

STAR RWY 08 ENAV GNS  
1 TRAIL PROC  
DNIPROPETROVSK  
Ukraine - UKDD / DNK

40 - 1 21 MAR 12

40 - 2 | 21 MAR 12

Ukraine - UKDD / DNK

# STAR RWY 08 **RNAV** GNSS 1 TRAIL PROC DNIPROPETROVSK

Dnipro RAD 119.4	TWR 118.6	GND 121.8
TL ATC	AD Elev 481	

1 KRASNOGOR 1X, TOPINE 1X

**MINM 7060**  
Topine  
643 TP  
N48 56.4  
E034 47.7

**MINM 8040**  
Krasnogor  
778 GR  
N49 23.3  
E035 26.9  
Scale distorted

TP1X  
**TOPINE 1X**  
23.2 174°

**RNAV 1 (P-RNAV)** approval required otherwise advise ATC.

**Warning**  
Reversal procedure not authorized.

ft		m	
QNH	QNH	QNH	QNH
8040	2450	7060	2150
6070	1850	2960	900
2470	750		

**KRASNOGOR 1X**  
GR1X  
201° 96'

6070

**MINM 6070**  
N48 33.2  
E034 47.7

DD208

**GR 1X**  
**TP 1X**  
6.7 174°

**MINM 2960**  
N48 26.4  
E034 47.7

DD204  
MAX 220kt



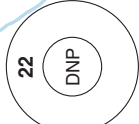
**At 2470**  
N48 21.4  
E034 47.7

DD202

**At 2470**  
D7.5 DNP  
N48 21.4  
E034 55.0

DD201  
FAF

**D112.5 DNP**  
N48 21.6  
E035 06.2



Change: New spec.

© Navtech - ukdd03aaorg0

Dnipro RAD	TWR	GND
119.4	118.6	121.8

TL ATC AD Elev 481

RNAV 1 (P-RNAV) approval required otherwise advise ATC.

Dnipro  
D112.5 DNP  
N48 21.6  
E035 06.2

Warning  
Reversal procedure  
not authorized.

m	ft
QNH	QNH
2450	8040
2150	7060
1850	6070
900	2960
750	2470

DD202  
At **2470**  
N48 21.4  
E034 47.7

FAF  
DD201  
At **2470**  
D7.5 DNP  
N48 21.4  
E034 55.0

DD205  
MAX 220kt  
MNM **2960**  
N48 16.4  
E034 47.7

DD209  
N48 12.2  
E035 07.0

**KOSIR 1X  
BULIG 1X**

**KOSIR**  
MNM **8040**  
N48 13.6  
E036 19.7

DD210  
N48 02.6  
E035 52.0

**KOSIR 1X**  
234° (21.6)

DD211  
MNM **7060**  
N48 06.1  
E034 46.4

MNM **7060**

Makivka  
402 TM

**RUBES**  
MNM **8040**  
N47 52.0  
E035 19.0

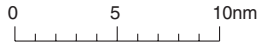
**BULIG 1X**  
14.8

**BULIG**  
MNM **8040**  
N47 58.0  
E036 13.0

7060  
179°

**RUBES 1X**  
315° (32)

6070  
102°



**BULIG 1X, KOSIR 1X,  
MAKIVKA 1X, RUBES 1X**

STAR RWY 08 ENAV GNSS TRAIL PROC DNIPROPETROVSK

40 - 3 | 21 MAR 12

Ukraine - UKDD / DNK

22  
DNP

# STAR RWY 26 **RNAV** GNSS **1** TRAIL PROC DNIPROPETROVSK

Dnipro RAD 119.4	TWR 118.6	GND 121.8
TL ATC	AD Elev 481	

**1** AULY IZ, KRASNOGOR IZ, OSLAN IZ, TIRPU IZ, TOPINE IZ

**Warning**  
Reversal procedure not authorized.

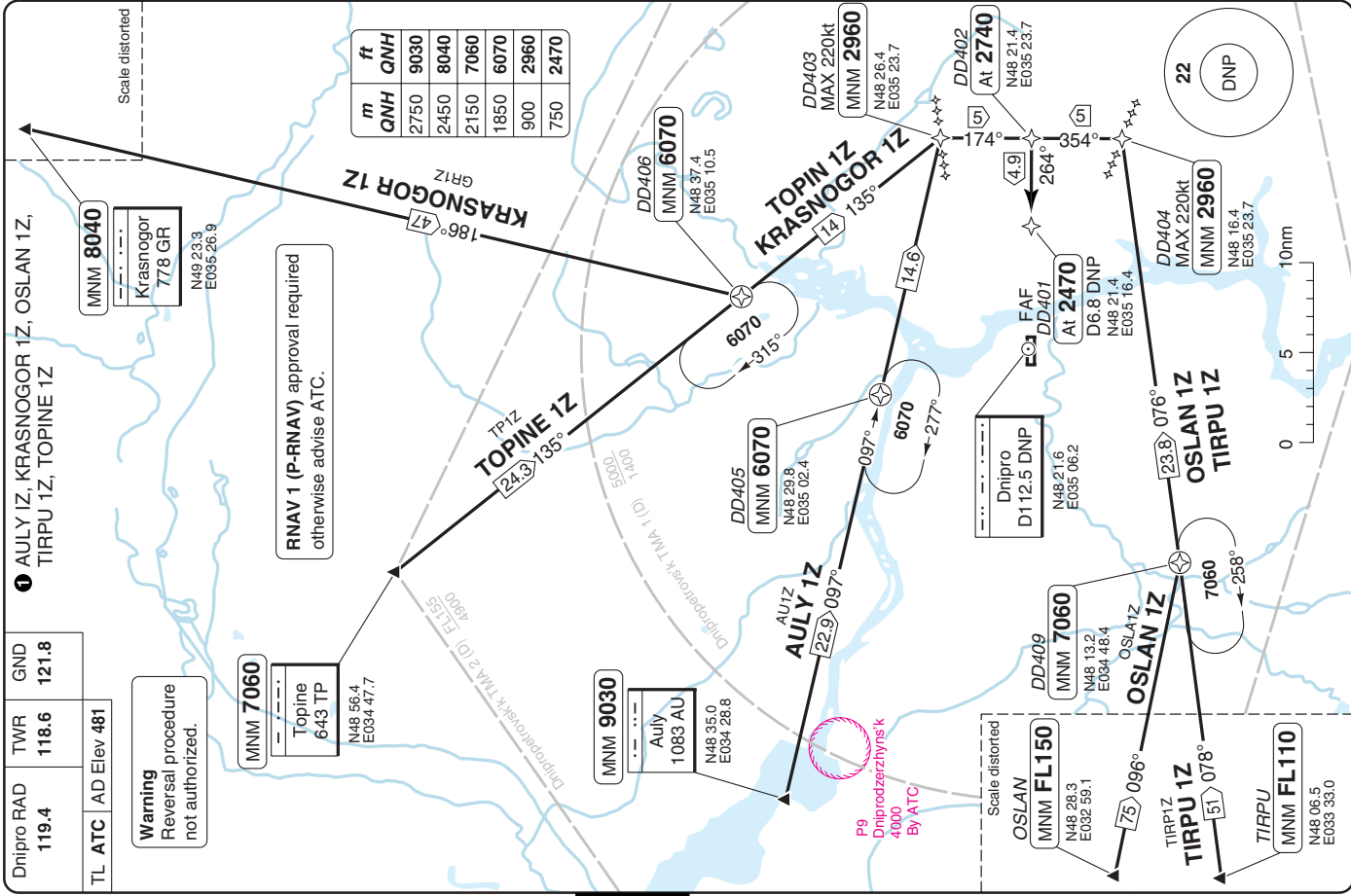
**MNMM 7060**  
Topine  
643 TP  
N48 56.4  
E034 47.7

**MNMM 8040**  
Krasnogor  
778 GR  
N49 23.3  
E035 26.9

**RNAV 1 (P-RNAV) approval required**  
otherwise advise ATC.

	ft	QNH
m	9030	2750
	8040	2450
	7060	2150
	6070	1850
	2960	900
	2470	750

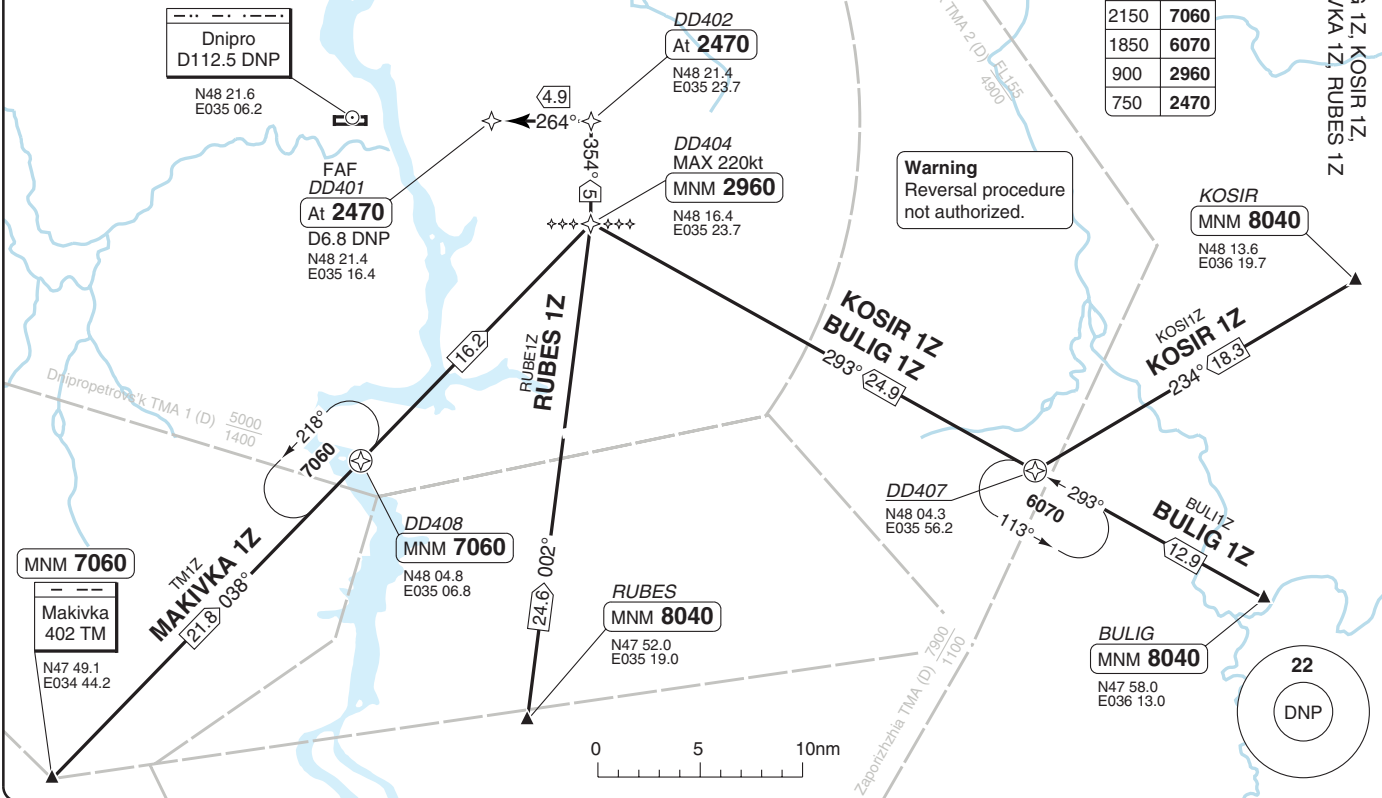
Scale distorted



Dnipro RAD <b>119.4</b>	TWR <b>118.6</b>	GND <b>121.8</b>
TL ATC	AD Elev 481	

**RNAV 1 (P-RNAV) approval required otherwise advise ATC.**

m	ft
<b>QNH</b>	<b>QNH</b>
2450	8040
2150	7060
1850	6070
900	2960
750	2470



**STAR RWY 26 ENAV** GNS  
**TRAIL PROC** DNIPROPETROVSK  
 Ukraine - UKDD / DNK

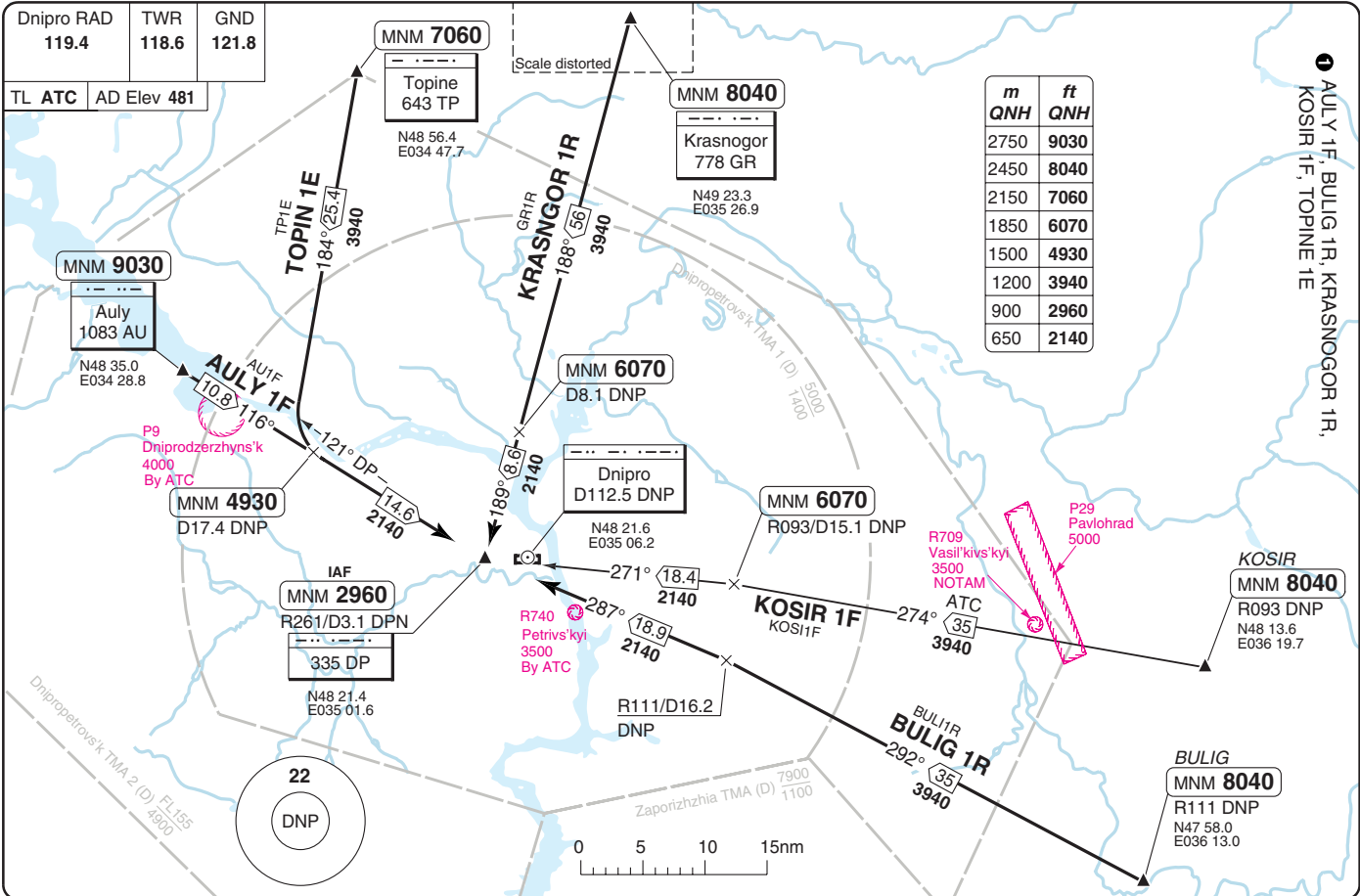
THIS CHART IS A PART OF NAVIGRAPH NDAC AND IS INTENDED FOR FLIGHT SIMULATION USE ONLY

Change: New spec.



Dnipro RAD 119.4	TWR 118.6	GND 121.8
TL ATC	AD Elev 481	

m	ft
2750	9030
2450	8040
2150	7060
1850	6070
1500	4930
1200	3940
900	2960
650	2140



40 - 7 | 21 MAR 12

Ukraine - UKDD / DNK  
DNIPROPETROVSK

1 AULY 1F, BULIG 1R, KRASNOGOR 1R,  
KOSIR 1F, TOPINE 1E

KOSIR  
MNM 8040  
R093 DNP  
N48 13.6  
E036 19.7

BULIG  
MNM 8040  
R111 DNP  
N47 58.0  
E036 13.0

Change: New spec.  
 THIS CHART IS A PART OF NAVIGRAPH NDAC AND IS INTENDED FOR FLIGHT SIMULATION USE ONLY

Dnipro RAD 119.4	TWR 118.6	GND 121.8
---------------------	--------------	--------------

TL ATC AD Elev 481

1 JULY 1G, MAKIVKA 1S, OSLAN 1D,  
RUBES 1H, TIRPU 1U

**OSLAN**  
MNM FL150  
R269 DNP  
N48 28.3  
E032 59.1

**TIRPU**  
MNM FL110  
R251 DNP  
N48 06.5  
E033 33.0



m	ft
2750	9030
2450	8040
2150	7060
1500	4930
900	2960
650	2140



Dnipropetrovs'k FIR (UKDV)  
Simferopol FIR (UKFV)

MNM 9030

Auly  
1083 AU  
N48 35.0  
E034 28.8

OSLAN 1D  
60 089°  
2140

MNM 4930  
D17.3 DNP

MNM 7060  
R269/D24.8 DNP

TIRPU 1U  
45 072°  
3940

MNM 7060  
D16.7 DNP

MNM 7060

Makivka  
402 TM  
N47 49.1  
E034 44.2

MAKIVKA 1S  
18.9 022°  
3940

MNM 7060  
D16.7 DNP

AULY 1G  
110°  
10.8

Dnipro  
D112.5 DNP

20  
2140

21.6 073°  
2140

R710  
Novomykolaevs'kyi  
4000  
By ATC

IAF  
MNM 2960  
R087/D2.9 DNP

335 DR

N48 21.4  
E035 10.5

RUBES 1H  
344 030  
2140

R740  
Petrivs'kyi  
3500  
By ATC

RUBES  
MNM 8040  
R111 DNP  
N47 52.0  
E035 19.0

# STAR RWY 26<sup>1</sup>

# DNIPROPETROVSK

Dnipro RAD 119.4	TWR 118.6	GND 121.8
---------------------	--------------	--------------

**1** BULIG 1S, KOSIR 1G, KRASNOGOR 1S, KOSIR 1G, TOPINE 1F

TL ATC AD Elev 481

MNM 8040

Krasnogor  
778 GR

N49 23.3  
E035 26.9

m	ft
2450	8040
2150	7060
1850	6070
1200	3940
900	2960
650	2140

MNM 7060

Topine  
643 TP

N48 56.4  
E034 47.7

TP1F  
TOPINE 1F  
24.8 / 130°  
3940

GR1S  
KRASNOGOR 1S  
183° / 44'  
3940

MNM FL115

D19.4 DNP

IAF  
MNM 2960

R087/D2.9 DNP

335 DR

N48 21.4  
E035 10.5

Dnipro  
D112.5 DNP

N48 21.6  
E035 06.2

R111/D16.2  
DNP

MNM 6070

R093/D15.1 DNP

ATC  
274° / 35'

KOSIR 1G  
KOSIR 1G

BULIG 1S  
BULIG 1S  
292° / 35'

P29  
Pavlohrad  
5000

KOSIR

MNM 8040

R093 DNP

N48 13.6

E036 19.7

R709  
Vasil'kivs'kyy  
3500  
NOTAM

22

DNP

Zaporizhzhia TMA (D) 7900  
1100

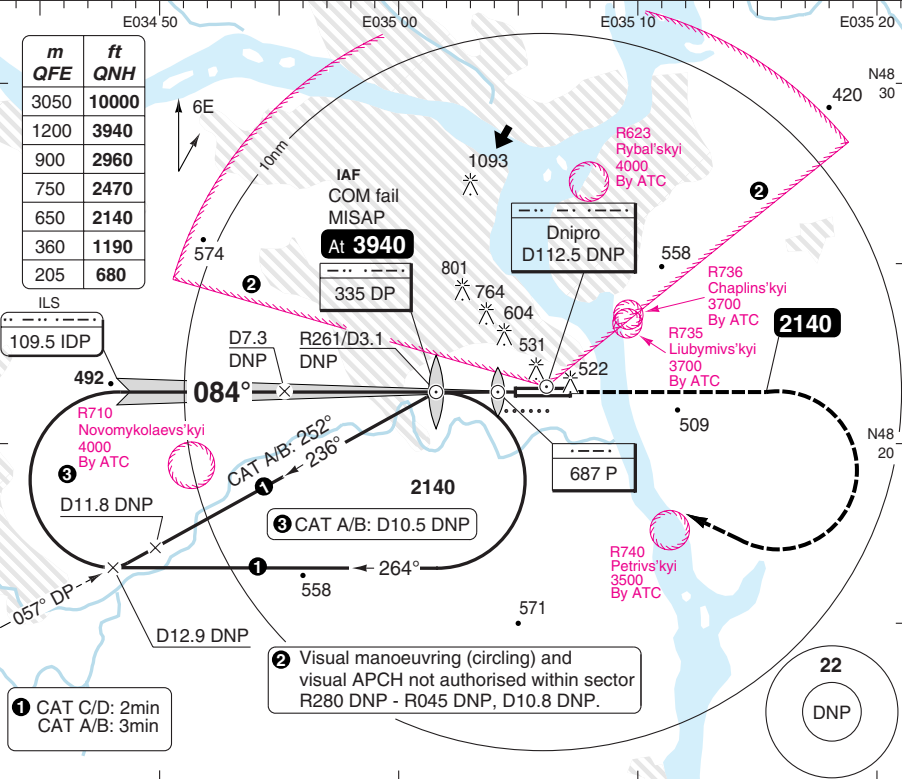
0 5 10 15nm

# ILS RWY 08

# DNIPROPETROVSK

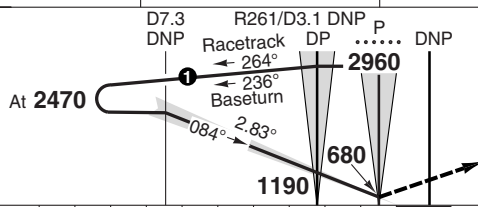
Dnipro RAD <b>119.4</b>	TWR <b>118.6</b>	GND <b>121.8</b>			
ILS <b>109.5 IDP</b>	FAT <b>084°</b>	THR Elev <b>454</b> 17 hPa	AD Elev <b>481</b> 17 hPa	TL <b>ATC</b>	TA <b>10000</b>

m	ft	QNH
3050	<b>10000</b>	
1200	<b>3940</b>	
900	<b>2960</b>	
750	<b>2470</b>	
650	<b>2140</b>	
360	<b>1190</b>	
205	<b>680</b>	



ILS  
109.5 IDP  
492.  
084°  
R710 Novomykolaev'skyi 4000 By ATC  
D11.8 DNP  
057 DP  
D12.9 DNP  
1 CAT C/D: 2min  
CAT A/B: 3min

2 Visual manoeuvring (circling) and visual APCH not authorised within sector R280 DNP - R045 DNP, D10.8 DNP.



**In case of RADIO COMM FAILURE:**  
Climb on 084° to **2140**, then turn right climbing to **3940** to **[DP]**, then according to chart.

50 - 1

nm 10 9 8 7 6 5 4 3 2 1 0	TCH 57
---------------------------	--------

ACFT	ILS	Circling <sup>ⓐ</sup>
A	660 (200) 550m	950 (459) 1.5km
B		1090 (607) 1.6km
C		1240 (755) 2.4km
D	670 (207) 550m	1520 (1033) 3.6km

<sup>ⓐ</sup> NA between R280 to R045 DNP, D10.8NM.

DME DNP	2.8° ALT	LDA 2858x44 9376x144ft P 2.8°
7.3	<b>2470</b>	
7	<b>2380</b>	
6	<b>2080</b>	
5	<b>1780</b>	
4	<b>1480</b>	
3	<b>1180</b>	
2	<b>880</b>	
1.3	<b>680</b>	

GS	80	100	120	140	160
ROD 3.0°	400	500	600	700	800

© Navtech - ukdd01aip00

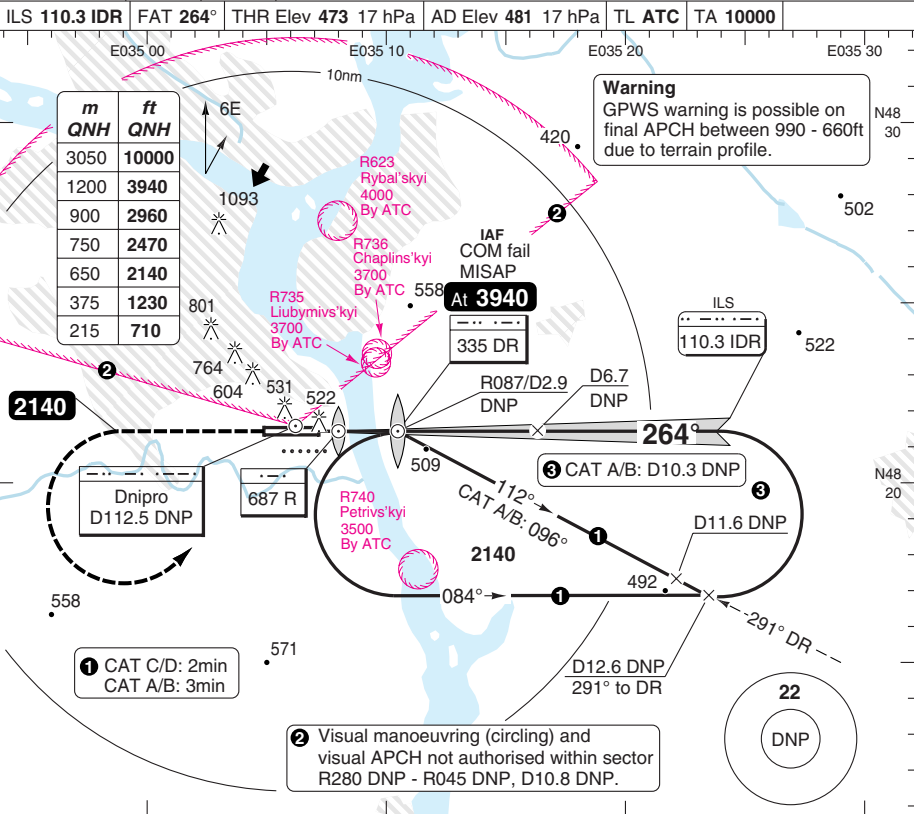
Change: New spec.

**THIS CHART IS A PART OF NAVIGRAPH NDAC AND IS INTENDED FOR FLIGHT SIMULATION USE ONLY**

# ILS RWY 26

# DNIPROPETROVSK

Dnipro RAD <b>119.4</b>	TWR <b>118.6</b>	GND <b>121.8</b>			
ILS <b>110.3 IDR</b>	FAT <b>264°</b>	THR Elev <b>473</b> 17 hPa	AD Elev <b>481</b> 17 hPa	TL <b>ATC</b>	TA <b>10000</b>



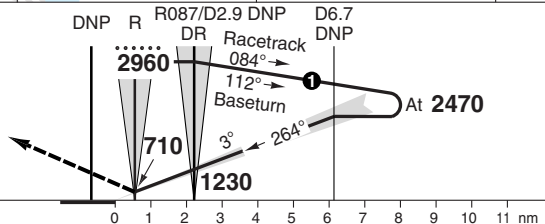
PANS OPS

50 - 2

Climb on 264° to **2140**, then as directed by ATC.

**In case of RADIO COMM FAILURE:**

Climb on 264° to **2140**, then turn left climbing to **3940** to **[DR]**, then according to chart.



TCH 52

ACFT	ILS	Circling ⓐ
A	680 (200) 550m	910 (427) 1.5km
B		1080 (591) 1.6km
C		1210 (722) 2.4km
D		1500 (1017) 3.6km

ⓐ NA between R280 to R045 DNP, D10.8NM.

DME	3.0° ALT	LDA 2858x44
DNP		9376x144ft
6.8	2470	P 3°
6	2230	
5	1910	FALS
4	1590	
3	1260	
2	940	
1.3	710	

GS	80	100	120	140	160
ROD 3.0°	430	540	640	750	860

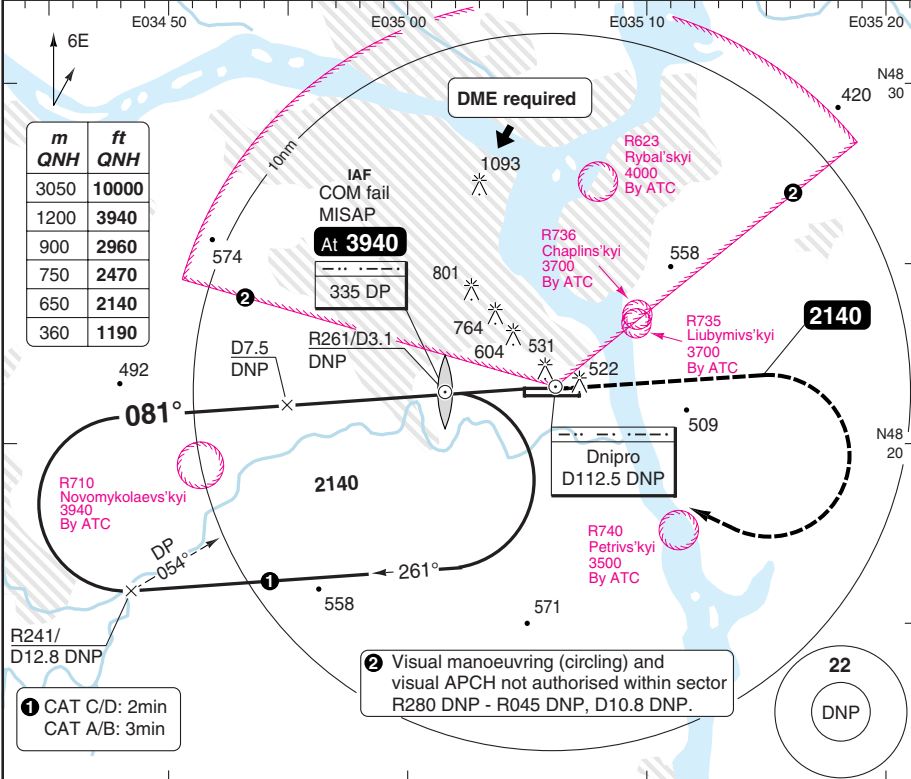
Change: New spec.

# VOR RWY 08

# DNIPROPETROVSK

Dnipro RAD <b>119.4</b>	TWR <b>118.6</b>	GND <b>121.8</b>
----------------------------	---------------------	---------------------

VOR/DME <b>112.5 DNP</b>	FAT <b>081°</b>	THR Elev <b>454</b> 17 hPa	AD Elev <b>481</b> 17 hPa	TL <b>ATC</b>	TA <b>10000</b>
--------------------------	-----------------	----------------------------	---------------------------	---------------	-----------------



ACFT	<b>VOR+DME</b>	<b>Circling<sup>a</sup></b>	<sup>a</sup> NA between R280 to R045 DNP, D10.8NM				
A		<b>950</b> (459) 1.5km					
B	<b>820</b> (377) 1000m	<b>1090</b> (607) 1.6km					
C		<b>1240</b> (755) 2.4km					
D		<b>1520</b> (1033) 3.6km					
GS	80	100	120	140	160		
ROD 2.8°	400	500	600	700	800		
FAF-MAPt	4:26	3:32	2:57	2:32	2:13		

DME DNP	2.8° ALT	LDA 2858x44 9376x144ft P 2.8°
7.5	<b>2470</b>	
7	<b>2330</b>	
6	<b>2030</b>	
5	<b>1730</b>	
4	<b>1430</b>	
3	<b>1130</b>	
2	<b>820</b>	

© Navtech - ukdd03aip00

50 - 3

FALS

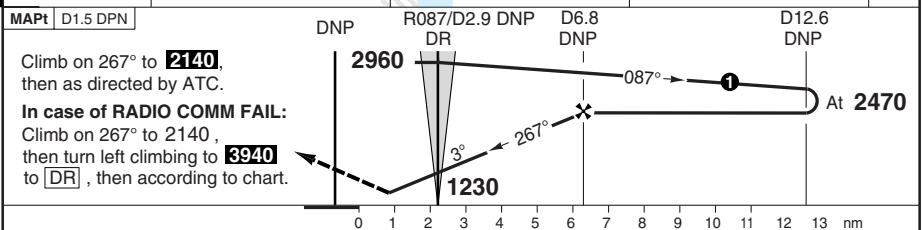
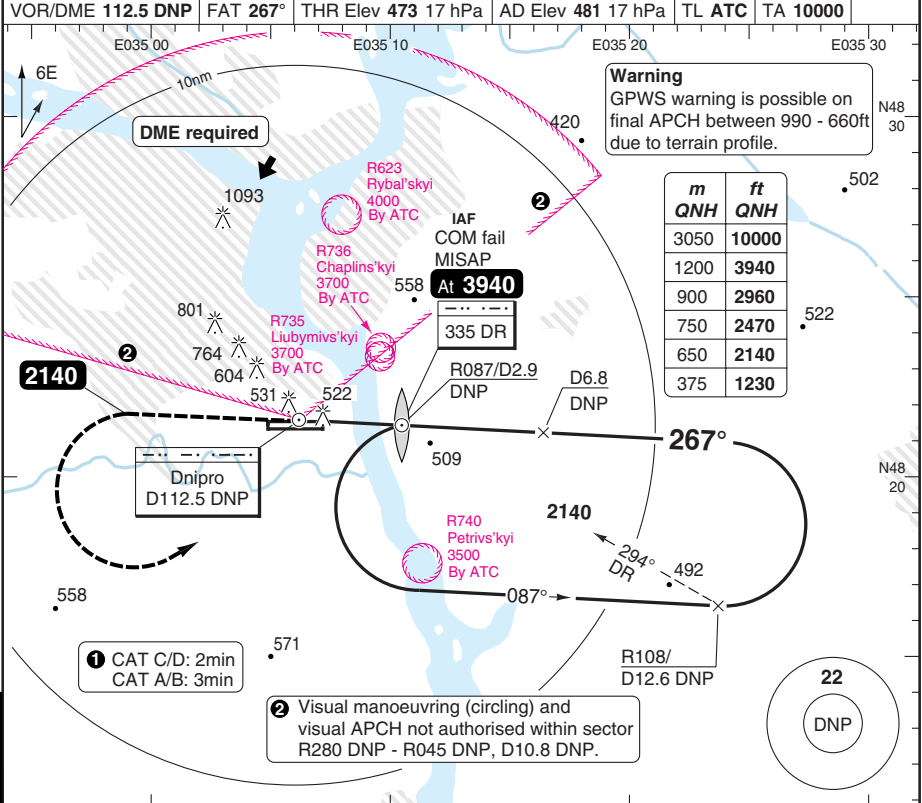
Change: New spec.

**THIS CHART IS A PART OF NAVIGRAPH NDAC AND IS INTENDED FOR FLIGHT SIMULATION USE ONLY**

# VOR RWY 26

# DNIPROPETROVSK

Dnipro RAD <b>119.4</b>	TWR <b>118.6</b>	GND <b>121.8</b>		
VOR/DME <b>112.5 DNP</b>	FAT <b>267°</b>	THR Elev <b>473</b> 17 hPa	AD Elev <b>481</b> 17 hPa	TL ATC TA <b>10000</b>



ACFT	<b>VOR+DME</b>	<b>Circling a</b>					DME DNP	3° ALT	LDA 2858x44 9376x144ft P 3°
A	<b>840</b> (361)	<b>910</b> (427) 1.5km	<b>a</b> NA between R280 to R045 DNP, D10.8NM.				6.8	<b>2470</b>	
B		<b>1080</b> (591) 1.6km					6	<b>2210</b>	
C		<b>1210</b> (722) 2.4km					5	<b>1900</b>	
D		<b>1500</b> (1017) 3.6km					4	<b>1580</b>	
GS	80	100	120	140	160	3	<b>1260</b>		
ROD 3.0°	430	530	640	740	850	2	<b>940</b>		
FAF-MAPt	4:03	3:14	2:42	2:19	2:02	1.7	<b>840</b>		

© Navtech - ukdd04iap00

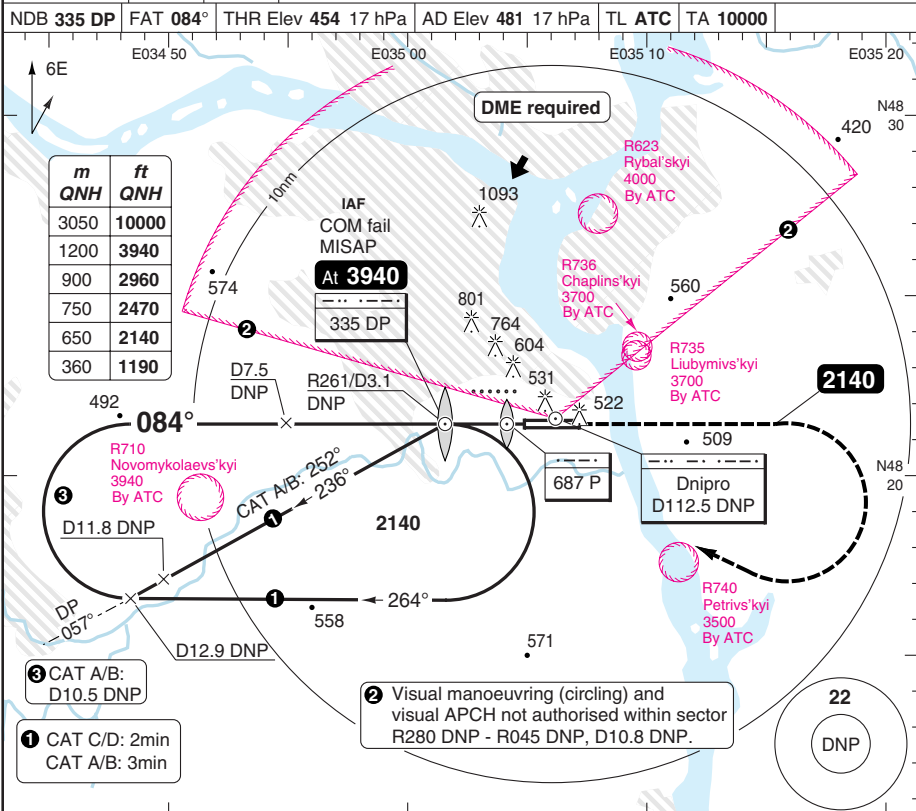
Change: New spec.

**THIS CHART IS A PART OF NAVIGRAPH NDAC AND IS INTENDED FOR FLIGHT SIMULATION USE ONLY**

# NDB RWY 08

# DNIPROPETROVSK

Dnipro RAD <b>119.4</b>	TWR <b>118.6</b>	GND <b>121.8</b>				
NDB <b>335 DP</b>	FAT <b>084°</b>	THR Elev <b>454</b> 17 hPa	AD Elev <b>481</b> 17 hPa	TL <b>ATC</b>	TA <b>10000</b>	



© Navtech - ukdd05iaip00

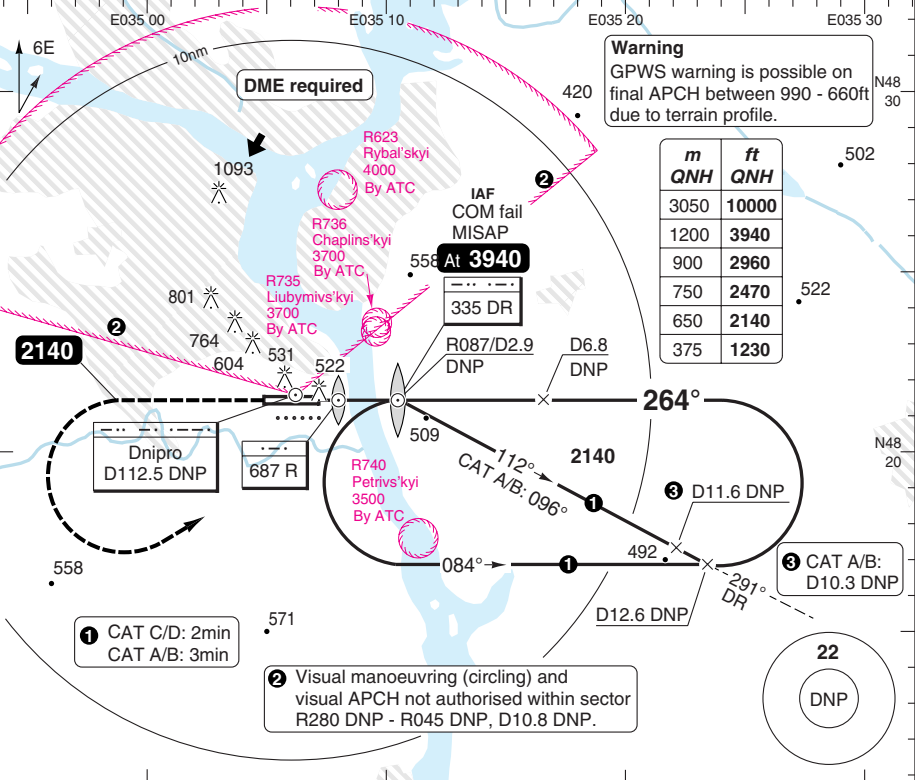
50 - 5

# NDB RWY 26

# DNIPROPETROVSK

Dnipro RAD 119.4	TWR 118.6	GND 121.8
---------------------	--------------	--------------

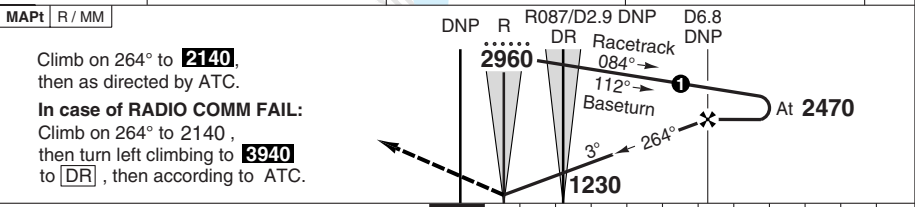
NDB 335 DR	FAT 264°	THR Elev 473 17 hPa	AD Elev 481 17 hPa	TL ATC	TA 10000
------------	----------	---------------------	--------------------	--------	----------



m	ft
3050	10000
1200	3940
900	2960
750	2470
650	2140
375	1230

① CAT C/D: 2min  
CAT A/B: 3min

② Visual manoeuvring (circling) and visual APCH not authorised within sector R280 DNP - R045 DNP, D10.8 DNP.



ACFT	NDB+DME	NDB	NDB <sup>a</sup>	Circling <sup>b</sup>	DME	3° ALT	LDA 2858x44 9376x144ft P 3°
A	840 (361) 1000m	890 (410) 1200m	890 (410) 1400m	910 (427) 1.5km	6.8	2470	
B				1080 (591) 1.6km			
C			890 (410) 1600m	1210 (722) 2.4km			
D				1500 (1017) 3.6km			
GS	80	100	120	140	160		
ROD 3.0°	430	540	640	750	860		
FAF-MAPt	4:12	3:22	2:48	2:24	2:06		