

Airport information:

Country: Russian Federation

City: BLAGOVESHCHENSK

Coordinates: N 50° 25.5', E127 24.7

Elevation: 640

Customs: : H24

Fuel: TS-1 (Equivalent to Jet A1)

RFF: CAT 7

hours: H24.

Runways:

Runway 18

Takeoff length: 2800, Landing length: 2800

Runway 36

Takeoff length: 2800, Landing length: 2800

AERODROME

Ignatyev BLAGOVESHCHENSK

10 - 1

Blagoveshchensk TWR
127.2

ATIS
126.4

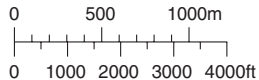
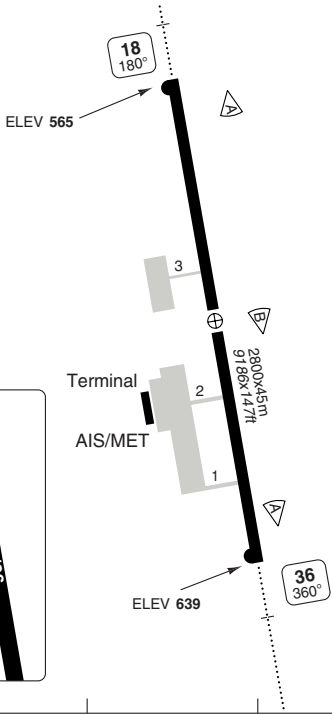
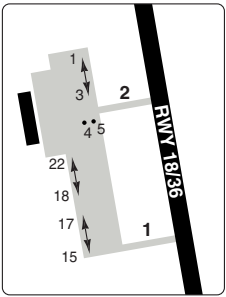
AD Elev **639** | ARP: N50 25.5 E127 24.7 | RFF: CAT 7 | AD HR: H24

E127 23 E127 24 E127 25 E127 26 E127 27



THR Coordinates		
RWY 18	N50 26.3	E127 24.5
RWY 36	N50 24.8	E127 25.0

Parking position coordinates		
1	N50 25.4	E127 24.6
2	N50 25.4	E127 24.4
3	N50 25.3	E127 24.6
4, 5	N50 25.3	E127 24.5



RWY	Slope	TORA m/ft	LDA m/ft	ALS	REDL
18	+0.8	2800 / 9186	2800 / 9186	L-E ①	H
36	-0.8	2800 / 9186	2800 / 9186	L-E	H

① 420m.

EU OPS TAKE OFF MINIMA

RWY	Facilities	RVR			
		A	B	C	D
18/36	RCL (day only) or RCL + REDL	400m			
	NIL (day only)	500m			

GENERAL INFORMATION

- TWY RESTRICTION**
 TWY 1 and 3 width 18m/59ft.
 TWY 2 width 21m/68ft.
 No edge lights on TWY 3.

© Navitech - uhbb00laorgo

Reverse side blank

Change: New

GENERAL

Ignatyev BLAGOVESHCHENSK

10-0-1

WEF 17 NOV 11

1. The vertical separation system at this aerodrome will be changed to Table a) of ICAO Appendix 3, Annex 2, expressed in Feet, as shown in the table.
2. Clearances below the Trans Alt/Trans Lev will continue to be in metres QFE.
3. Any Flight Levels shown on the charts for this aerodrome will change to the nearest equivalent shown below:

True track angle	
000° to 179°	180° to 359°
FL	FL
010	020
030	040
050	060
070	080
090	100
110	120
130	140
150	160
170	180
190	200
210	220
230	240
250	260
270	280
290	300
310	320
330	340
350	360
370	380
390	400
410	430

SID RWY 18

Ignatyev BLAGOVESHCHENSK

Blagoveshchensk TWR 127.2	ATIS 126.4
-------------------------------------	----------------------

TA 3520	AD Elev 639
---------	-------------

m	STD	FL	
3600		119	
2400		79	
2100		69	
1800		60	
m	QFE	ft	QNH
900		3520	
200		1230	
100		900	

Initial turn
shall be executed at a distance not more than 4.8nm from RWY THR.

CAT C/D ACFT are allowed to make initial turn at 900ft.

All heights W of 356°/6.2nm from AD.

350 BM
N50 28.5
E127 23.8

Blagoveshchensk D113.6 BLG
N50 23.6
E127 25.6

All heights W of 184°/7.6nm from AD.

SIMLI FL60-119
R211/D6.6 BLG
N50 17.4
E127 22.1

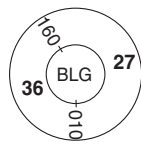
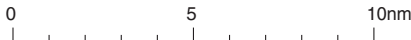
AMERA 1
MNM CLIMB GRADIENT 3.7% to FL79.

AMERA FL79-119
R122/D29.5 BLG
N50 13.3
E128 08.7

RUNET MAX FL119
R021/D31 BLG
N50 54.2
E127 33.6

FL69-119
Srednebeloye 460 WZ
N50 38.0
E128 02.0

30 - 1



SID RWY 36

Ignatyev BLAGOVESHCHENSK

Blagoveshchensk TWR
127.2

ATIS
126.4

TA 3600 AD Elev 639

Initial turn
shall be executed at a distance not more than 4.8nm from RWY THR.

CAT C/D ACFT are allowed to make initial turn at 970ft.

30 - 2

All heights W of 356°/6.2nm from AD.

Blagoveshchensk
D113.6 BLG
N50 23.6
E127 25.6

All heights W of 184°/7.6nm from AD.

BANIR



RUNET
MAX FL119
R021/D31 BLG
N50 54.2
E127 33.6

FL69-119
Srednebeloye
460 WZ
N50 38.0
E128 02.0



SRBEL 3
MNM CLIMB GRADIENT
3.5% to FL69.



At 1300

360
SIMLI 3
209°
17
350 LZ
N50 22.5
E127 25.7

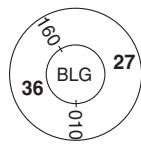
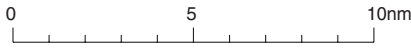
m	FL
3600	119
2400	79
2100	69
1800	60
m	ft
QFE	QNH
900	3600
200	1300
100	970



AMERA 3
FL79-119
R122/D29.5 BLG
N50 13.3
E128 08.7

SIMLI
FL60-119
R211/D6.6 BLG
N50 17.4
E127 22.1

SIMLI 3
MNM CLIMB GRADIENT
4% to FL60.



Blagoveshchensk TWR 127.2	ATIS 126.4
------------------------------	---------------

TL 50 AD Elev 639

All heights W of 356°/6.2nm from AD.

All heights W of 184°/7.6nm from AD.

SIMLI
FL50-119
R211/D6.6 BLG
N50 17.4
E127 22.1

350 BM
N50 28.5
E127 23.8

FAF
At 1550
D5.6 BLG

At 1880
R009/D9.7 BLG
N50 33.3
E127 25.1

At 2210
R018/D9.9 BLG
N50 33.6
E127 27.6

At 2210
R028/D8.9 BLG
N50 32.1
E127 29.6

At 2210
R056/D5.9 BLG
N50 27.8
E127 32.1

At 2210
R048/D4.9 BLG
N50 27.6
E127 30.2

Blagoveshchensk
D113.6 BLG
N50 23.6
E127 25.6

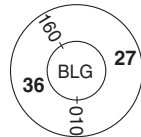
SRBEL 2

270° 31

FL69-119

Srednebeloye
460 WZ
N50 38.0
E128 02.0

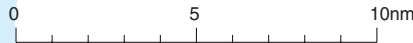
m	FL
3600	119
2400	79
2100	69
1800	60
1500	50
m	ft
QFE	QNH
500	2210
400	1880
300	1550



AMERA
FL79-119
R122/D29.5 BLG
N50 13.3
E128 08.7

AMERA 2

314° 42

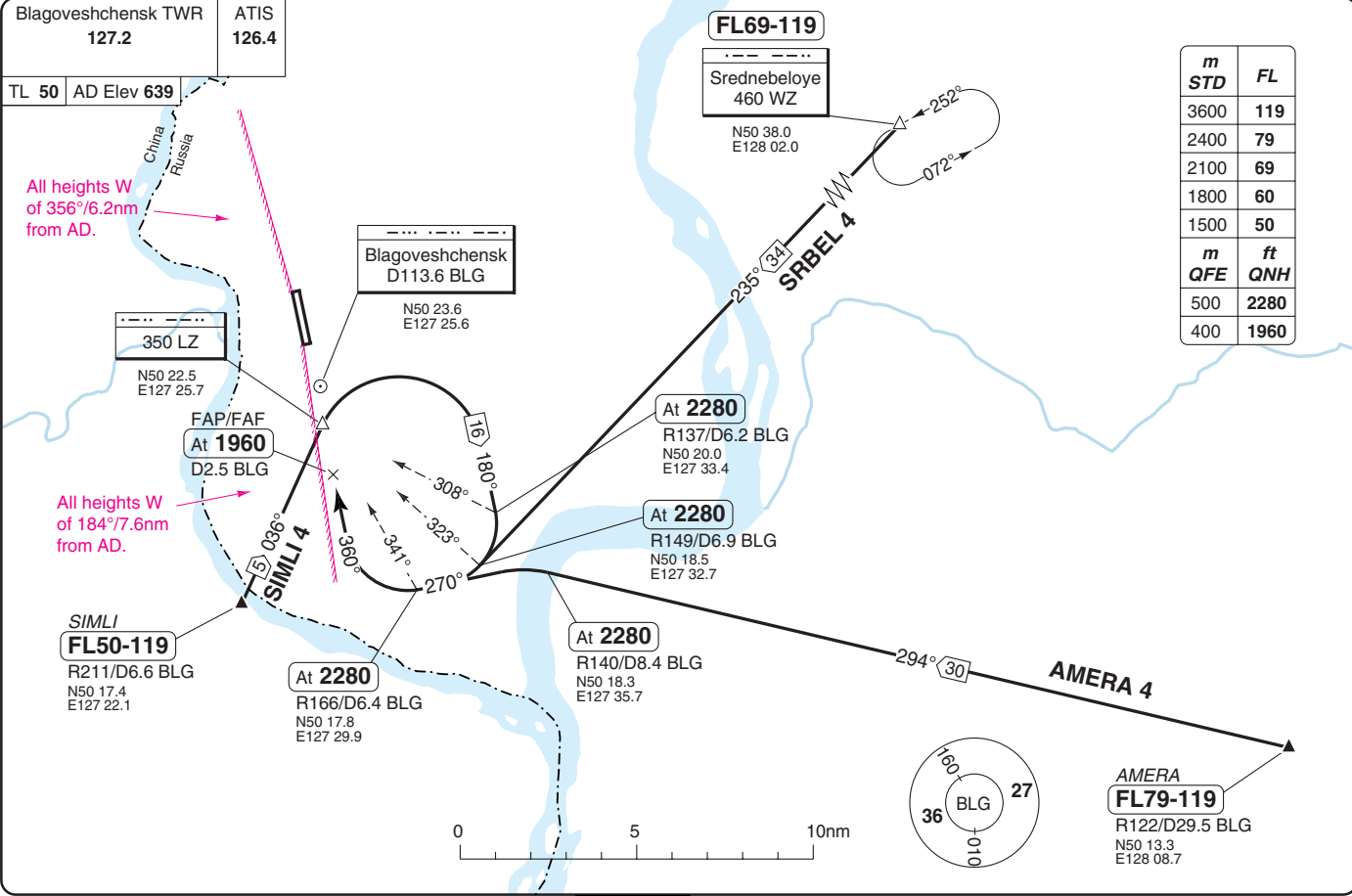


STAR RWY 18

40-1 07 JUL 10

Ignatyevno **BLAGOVESHCHENSK**

Russia - UHBB / BOS

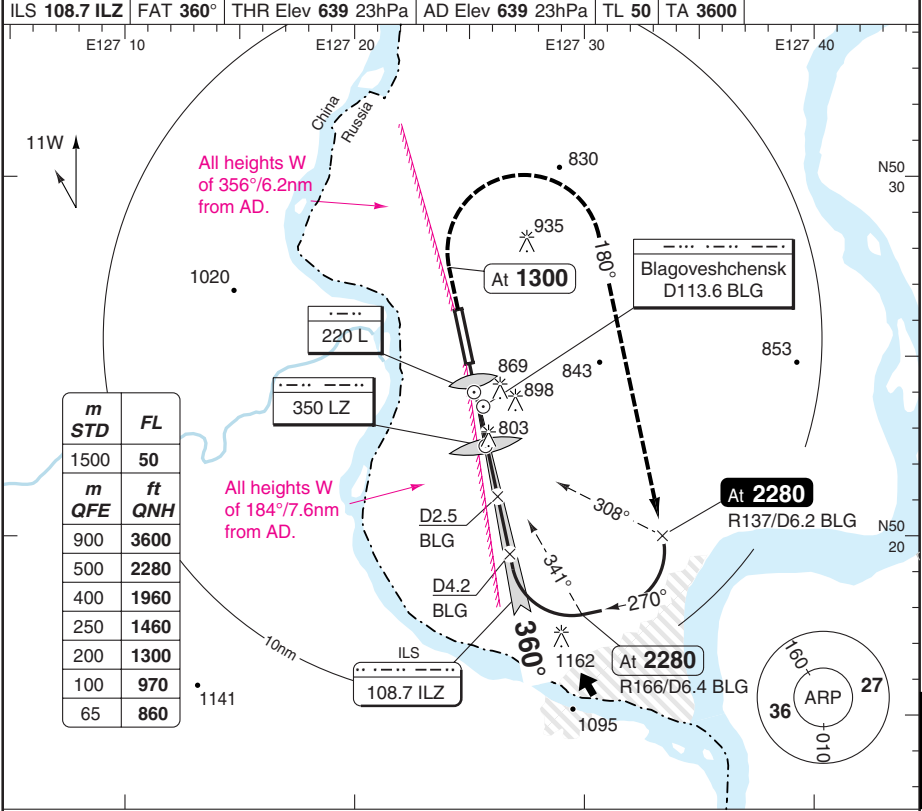


m STD	FL
3600	119
2400	79
2100	69
1800	60
1500	50
m QFE	ft QNH
500	2280
400	1960

ILS RWY 36

Ignatyev BLAGOVESHCHENSK

Blagoveshchensk TWR 127.2		ATIS 126.4	
ILS 108.7 ILZ	FAT 360°	THR Elev 639 23hPa	AD Elev 639 23hPa
E127 10		E127 20	
E127 30		E127 40	

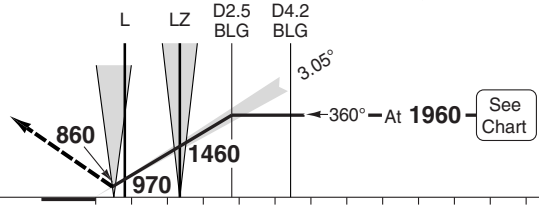


m	FL
1500	50
m	ft
QFE	QNH
900	3600
500	2280
400	1960
250	1460
200	1300
100	970
65	860

All heights W of 184°/7.6nm from AD.

All heights W of 356°/6.2nm from AD.

Climb on 360°, at 1300 turn right to 180° climbing to 2280, then according to chart.

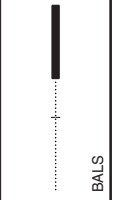


TCH 49	0	1	2	3	4	5	6	7	8	9	10	11	12	13	nm
--------	---	---	---	---	---	---	---	---	---	---	----	----	----	----	----

ACFT	ILS
A	
B	840 (200)
C	1000m
D	

Note: Circling NA

LDA 2800x45
9186x147ft



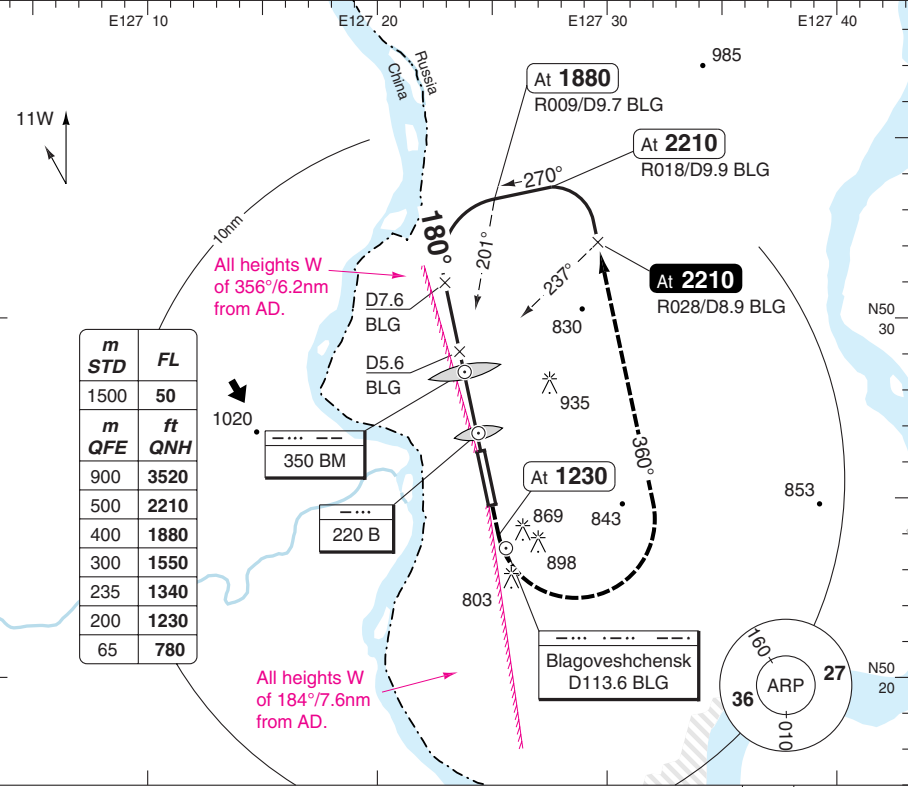
50 - 1

NDB RWY 18

Ignatyev BLAGOVESHCHENSK

Blagoveshchensk TWR 127.2	ATIS 126.4
-------------------------------------	----------------------

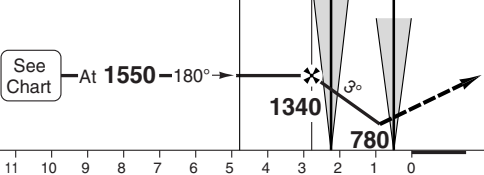
NDB 350 BM	FAT 180°	THR Elev 565 21hPa	AD Elev 639 23hPa	TL 50	TA 3520
-------------------	-----------------	---------------------------	--------------------------	--------------	----------------



PANS OPS

50 - 2

D7.6 BLG D5.6 BLG BM B MAPt 1.3nm after BM



Climb on 180°, at 1230 turn left to 360° climbing to 2210, then according to chart.

nm 13 12 11 10 9 8 7 6 5 4 3 2 1 0

ACFT	2NDB+DME	2NDB ^a
A	910 (342) 1400m	920 (350) 1600m
B		920 (350) 1800m
C		
D		

Note: Circling NA
^a Non CDFA

DME BLG	3.0° ALT
5.6	1550
5	1360
4	1040
3.6	910

LDA 2800x45
9186x147ft

GS	80	100	120	140	160
ROD 3.0°	440	540	650	760	870
BM-MAPt	0:58	0:46	0:39	0:33	0:29

420

BALS

© Navtech - uhbb02iaip00

Change: New

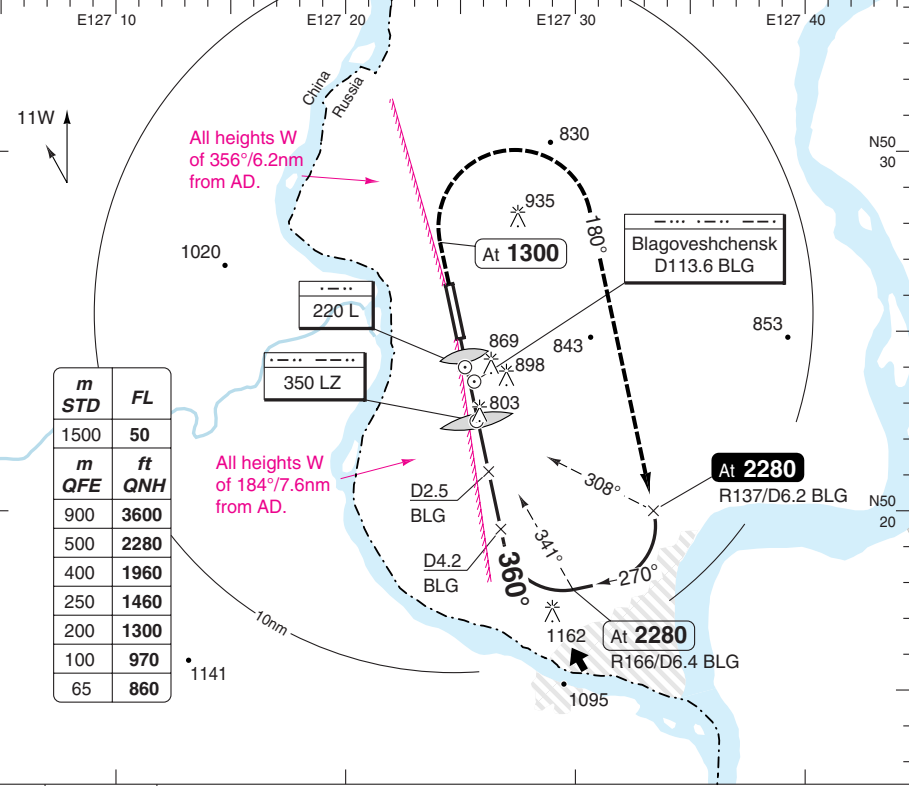
THIS CHART IS A PART OF NAVIGRAPH NDAC AND IS INTENDED FOR FLIGHT SIMULATION USE ONLY

NDB RWY 36

Ignatyev BLAGOVESHCHENSK

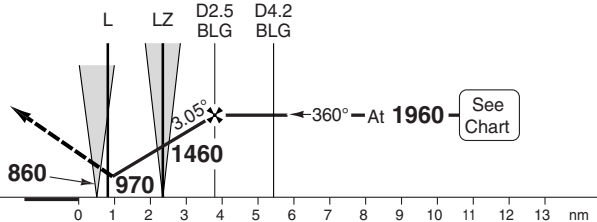
Blagoveshchensk TWR 127.2	ATIS 126.4
-------------------------------------	----------------------

NDB 350 LZ	FAT 360°	THR Elev 639 23hPa	AD Elev 639 23hPa	TL 50	TA 3600
-------------------	-----------------	---------------------------	--------------------------	--------------	----------------



MAPt 1.3nm after LZ

Climb on 360°, at **1300** turn right to 180° climbing to **2280**, then according to chart.



ACFT	2NDB+DME	2NDB ^a
A	1030 (384) 1500m	1030 (384) 1800m
B		
C	1030 (384) 1600m	1030 (384) 2000m
D		

Note: Circling NA
^a Non CDFA

DME BLG	3.1° ALT	LDA 2800x45 9186x147ft
2.5	1960	
2	1800	
1	1460	
0	1130	
0.3	1030	

GS	80	100	120	140	160
ROD 3.1°	450	560	670	790	900
LZ-MAPt	0:58	0:46	0:39	0:33	0:29

Change: New

© Navtech - uhbb03aip00

EU OPS

50 - 3

BALS
Reverse side blank

JAR-OPS Minima

Ignatyev BLAGOVESHCHENSK

The following Minima is for Public Transport aircraft and conforms to JAR-OPS1 regulations.

STRAIGHT-IN APPROACH		C				D			
R/W	Procedure	DA/ MDA QNH ft	DH/ MDH QFE ft	RVR m	RVR No ALS m	DA/ MDA QNH ft	DH/ MDH QFE ft	RVR m	RVR No ALS m
18	2 NDB	910	350	1600	1800	910	350	1800	2000
36	ILS	840	200	800	1000	840	200	800	1000
36	2 NDB	1030	390	1600	1800	1030	390	1800	2000

Notes:

CIRCLING		C			D		
R/W	Procedure	MDA QNH ft	MDH QFE ft	Vis m	MDA QNH ft	MDH QFE ft	Vis m
Not authorised							

Notes:

TAKE-OFF		C		D	
Runway	Facilities	RVR	Vis	RVR	Vis
18/36	REDL and/or RCL	400	-	400	-
18/36	Nil (Day only)	500	-	500	-

Notes:

JAR-OPS Minima

Ignatyev BLAGOVESHCHENSK

The following Minima is for Public Transport aircraft and conforms to JAR-OPS1 regulations.

STRAIGHT-IN APPROACH		A				B			
R/W	Procedure	DA/ MDA QNH ft	DH/ MDH QFE ft	RVR m	RVR No ALS m	DA/ MDA QNH ft	DH/ MDH QFE ft	RVR m	RVR No ALS m
18	2 NDB	910	350	1300	1500	910	350	1400	1500
36	ILS	840	200	800	1000	840	200	800	1000
36	2 NDB	1030	390	1300	1500	1030	390	1400	1500

Notes:

CIRCLING		A			B		
R/W	Procedure	MDA QNH ft	MDH QFE ft	Vis m	MDA QNH ft	MDH QFE ft	Vis m
Not authorised							

Notes:

TAKE-OFF		A		B	
Runway	Facilities	RVR	Vis	RVR	Vis
18/36	REDL and/or RCL	400	-	400	-
18/36	Nil (Day only)	500	-	500	-

Notes: