

Airport information:

Country: Kazakhstan

City: ATYRAU

Coordinates: N 47° 07.3', E051 49.3

Elevation: -72

Customs: Customs

Fuel: 91, TS-1 (equivalent to Jet A1)

RFF: CAT 9

hours: H24

Runways:

Runway 14

Takeoff length: 3000, Landing length: 3000

Runway 32

Takeoff length: 3000, Landing length: 3000

AERODROME

ATYRAU

10 - 1

Atyrau TWR
118.1

ATIS
127.4

AD Elev -72 ARP: N47 07.3 E051 49.3 RFF: CAT 9 AD HR: H24

E051 48 E051 49 E051 50 E051 51



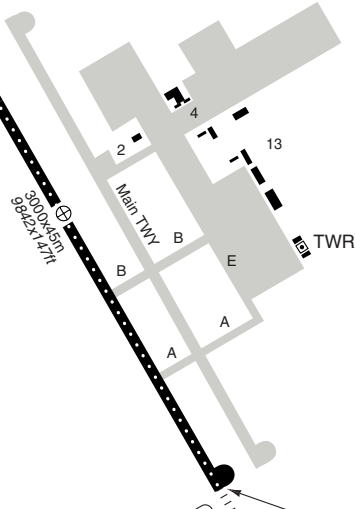
NDB T

14
142°

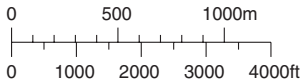
ELEV -73

THR Coordinates
RWY 14 N47 08.0 E051 48.7
RWY 32 N47 06.6 E051 49.9

N47
08



N47
07



RWY	Slope	TORA m/ft	LDA m/ft	ALS	REDL	RCLL	Additional
14	0	3000 / 9842	3000 / 9842	H-B	H	30m	P 3°
32	0	3000 / 9842	3000 / 9842	H-D ①	H	30m	-

① No EFAS.

STATE TAKE OFF MINIMA

RWY	Facilities	RVR/VIS		
		A B	C	D
14/32	RCLL + REDL	200m	200m	250m
	RCL + REDL (day only)	300m	400m	400m
	RCL + REDL (night only)	300m	500m	500m
	NIL (day only)	500m	500m	500m

© Navitech - uatg01laorg0

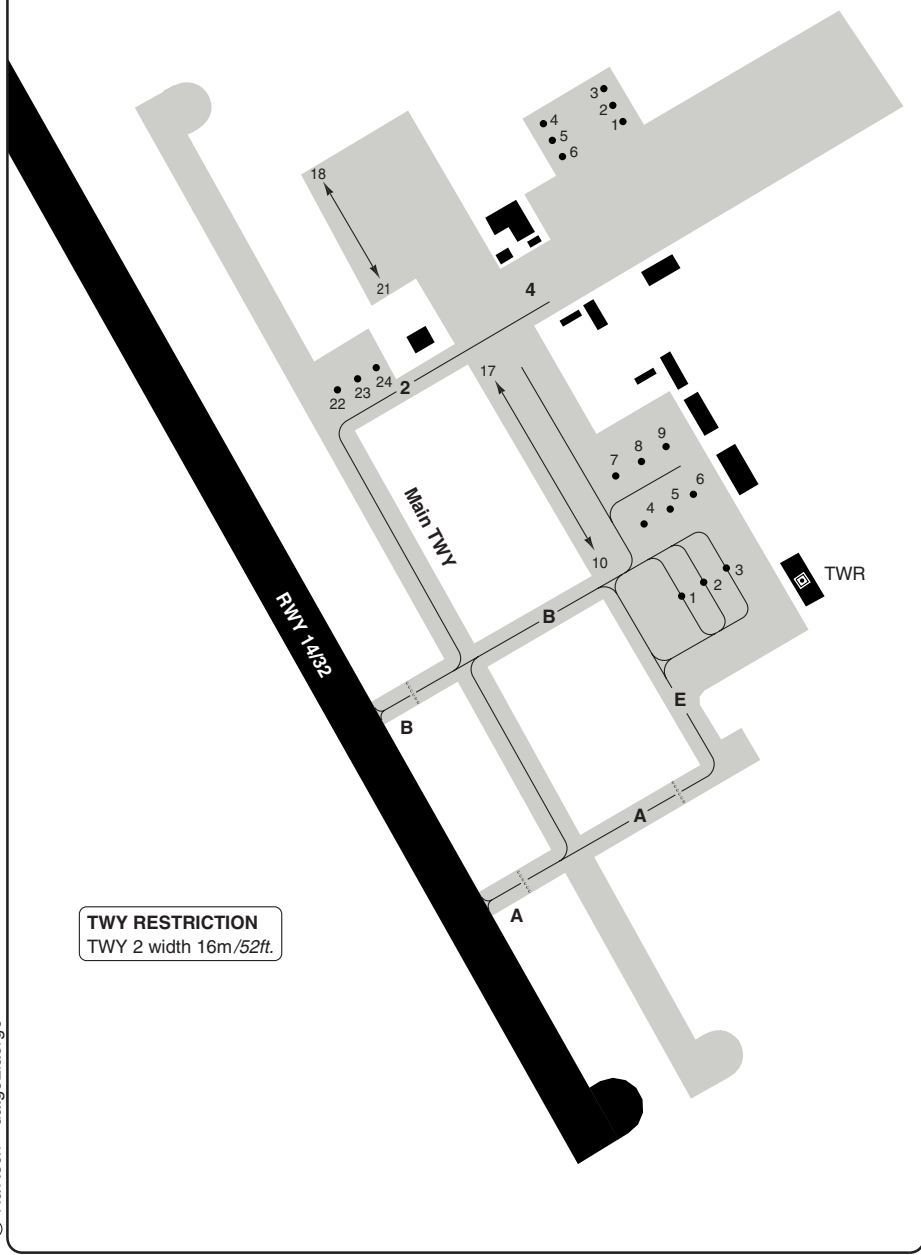
Change: New spec

THIS CHART IS A PART OF NAVIGRAPH NDAC AND IS INTENDED FOR FLIGHT SIMULATION USE ONLY

AERODROME Parking

10 - 2

Atyrau TWR 118.1	ATIS 127.4
---------------------	---------------



TWY RESTRICTION
 TWY 2 width 16m/52ft.

© Navitech - uatg02laorg0

Change: New spec

THIS CHART IS A PART OF NAVIGRAPH NDAC AND IS INTENDED FOR FLIGHT SIMULATION USE ONLY

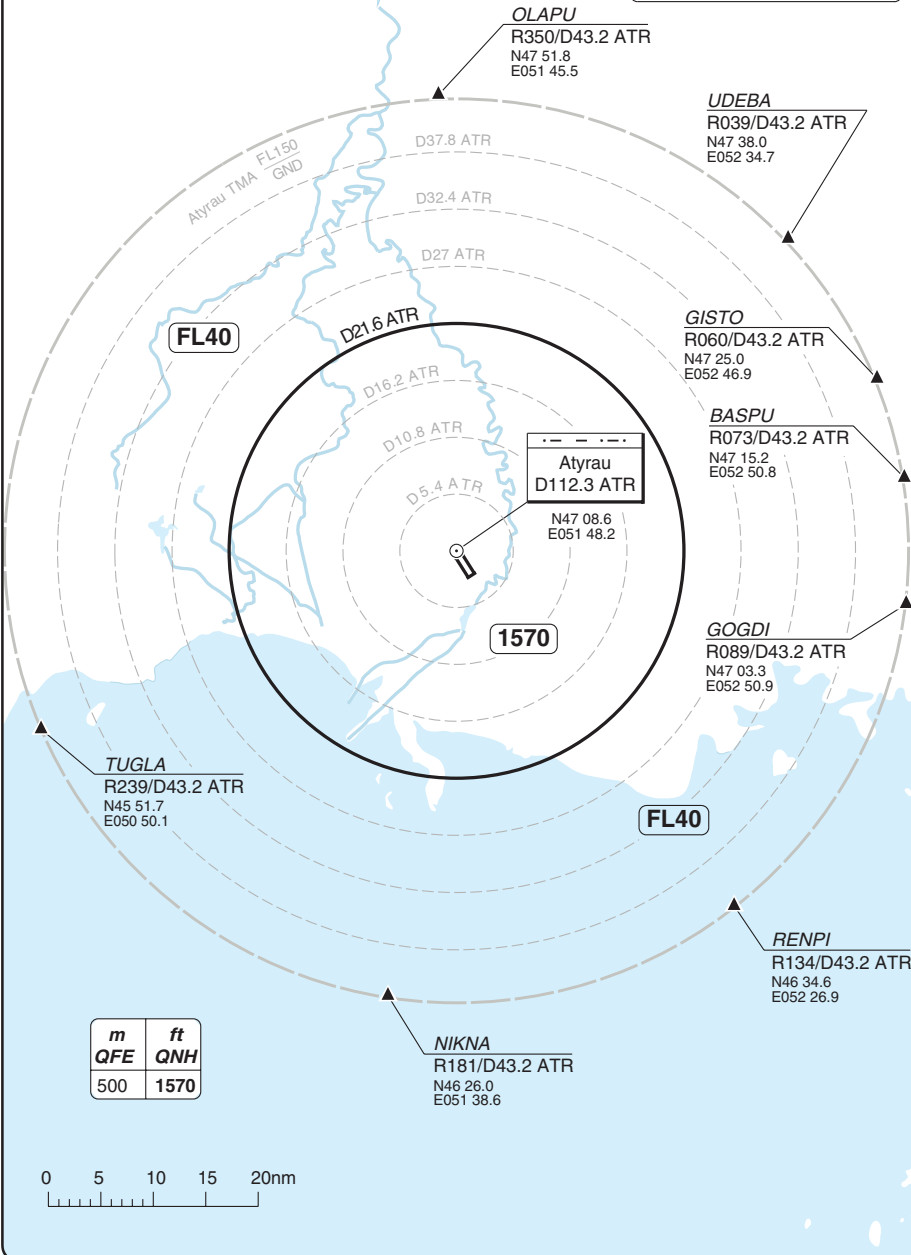
RADAR Minimum Altitudes

ATYRAU

Atyrau APP 123.7	TWR 118.1	ATIS 127.4
----------------------------	---------------------	----------------------

TL **40** AD Elev **-72**

NOTE
Chart only to be used for cross checking of altitudes assigned while under radar control



20 - 1

© Navitech - uatg01vaorg0

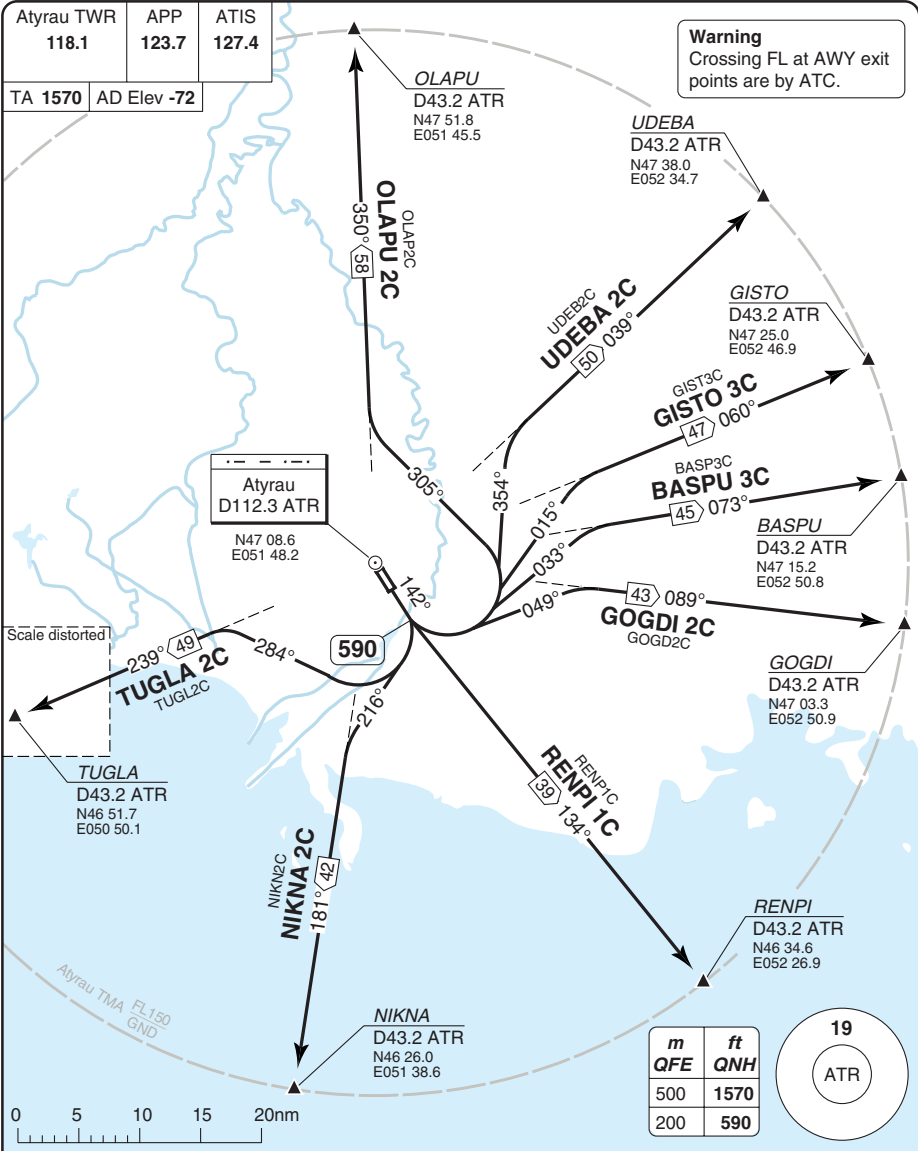
Reverse side blank

Change: New spec

THIS CHART IS A PART OF NAVIGRAPH NDAC AND IS INTENDED FOR FLIGHT SIMULATION USE ONLY

SID RWY 14

ATYRAU



Atyrau TWR 118.1	APP 123.7	ATIS 127.4
TA 1570	AD Elev -72	

SID	Routeing
BASPU 3C	Climb on 142° to 590 - turn left - 033° - intcp R073 ATR - BASPU.
GISTO 3C	Climb on 142° to 590 - turn left - 015° - intcp R060 ATR - GISTO.
GOGDI 2C	Climb on 142° to 590 - turn left - 049° - intcp R089 ATR - GOGDI.
NIKNA 2C	Climb on 142° to 590 - turn right - 216° - intcp R181 ATR - NIKNA.
OLAPU 2C	Climb on 142° to 590 - turn left - 305° - intcp R350 ATR - OLAPU.
RENPI 1C	Climb on 142° to 590 - turn left - 134° - RENPI.
TUGLA 2C	Climb on 142° to 590 - turn right - 284° - intcp R239 ATR - TUGLA.
UDEBA 2C	Climb on 142° to 590 - turn left - 354° - intcp R039 ATR - UDEBA.

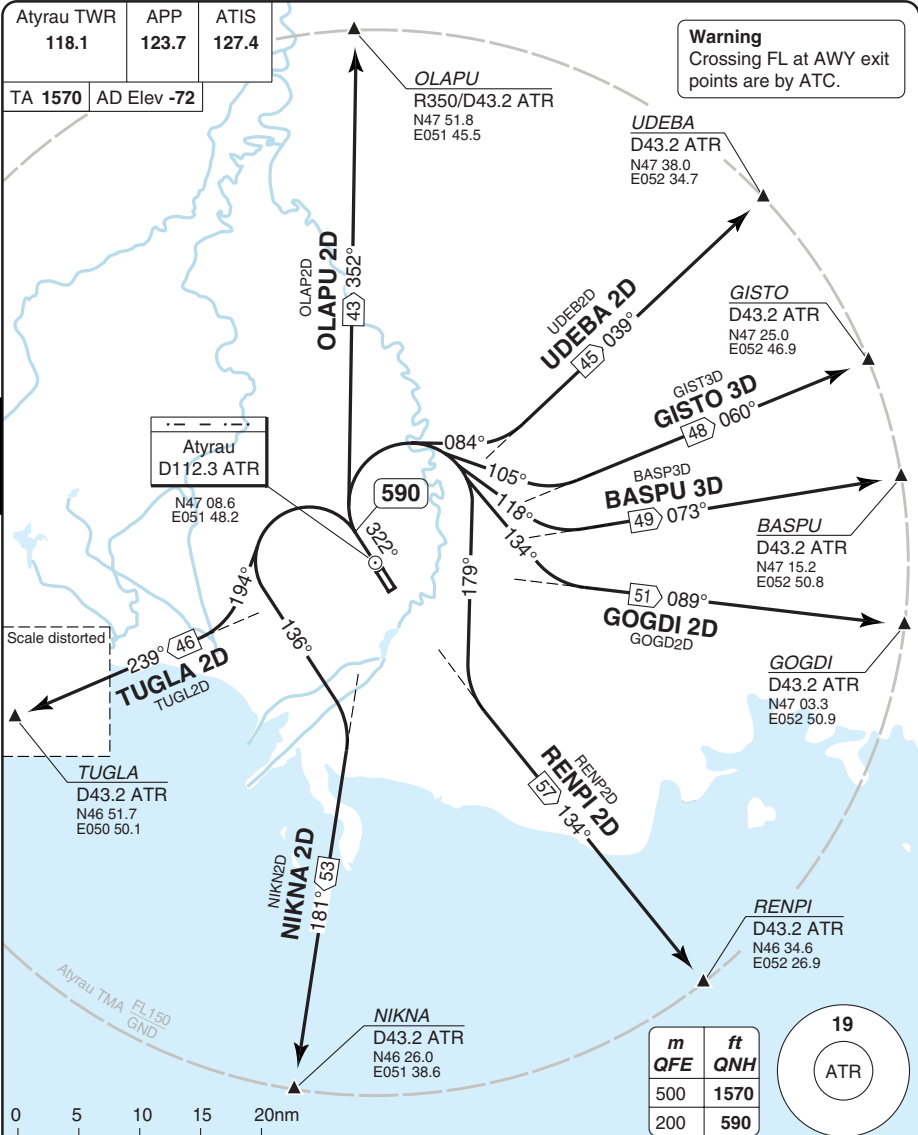
© Navitech - uatg01daorgo

Change: New spec.

THIS CHART IS A PART OF NAVIGRAPH NDAC AND IS INTENDED FOR FLIGHT SIMULATION USE ONLY

SID RWY 32

ATYRAU



© Navitech - uatg02daorgo

SID	Routing
BASPU 3D	Climb on 322° to 590 - turn right - 118° - intcp R073 ATR - BASPU.
GISTO 3D	Climb on 322° to 590 - turn right - 105° - intcp R060 ATR - GISTO.
GOGDI 2D	Climb on 322° to 590 - turn right - 134° - intcp R089 ATR - GOGDI.
NIKNA 2D	Climb on 322° to 590 - turn left - 136° - intcp R181 ATR - NIKNA.
OLAPU 2D	Climb on 322° to 590 - turn right - 352° - OLAPU.
RENPI 2D	Climb on 322° to 590 - turn right - 179° - intcp R134 ATR - RENPI.
TUGLA 2D	Climb on 322° to 590 - turn left - 194° - intcp R239 ATR - TUGLA.
UDEBA 2D	Climb on 322° to 590 - turn right - 084° - intcp R039 ATR - UDEBA.

Change: New spec.

THIS CHART IS A PART OF NAVIGRAPH NDAC AND IS INTENDED FOR FLIGHT SIMULATION USE ONLY

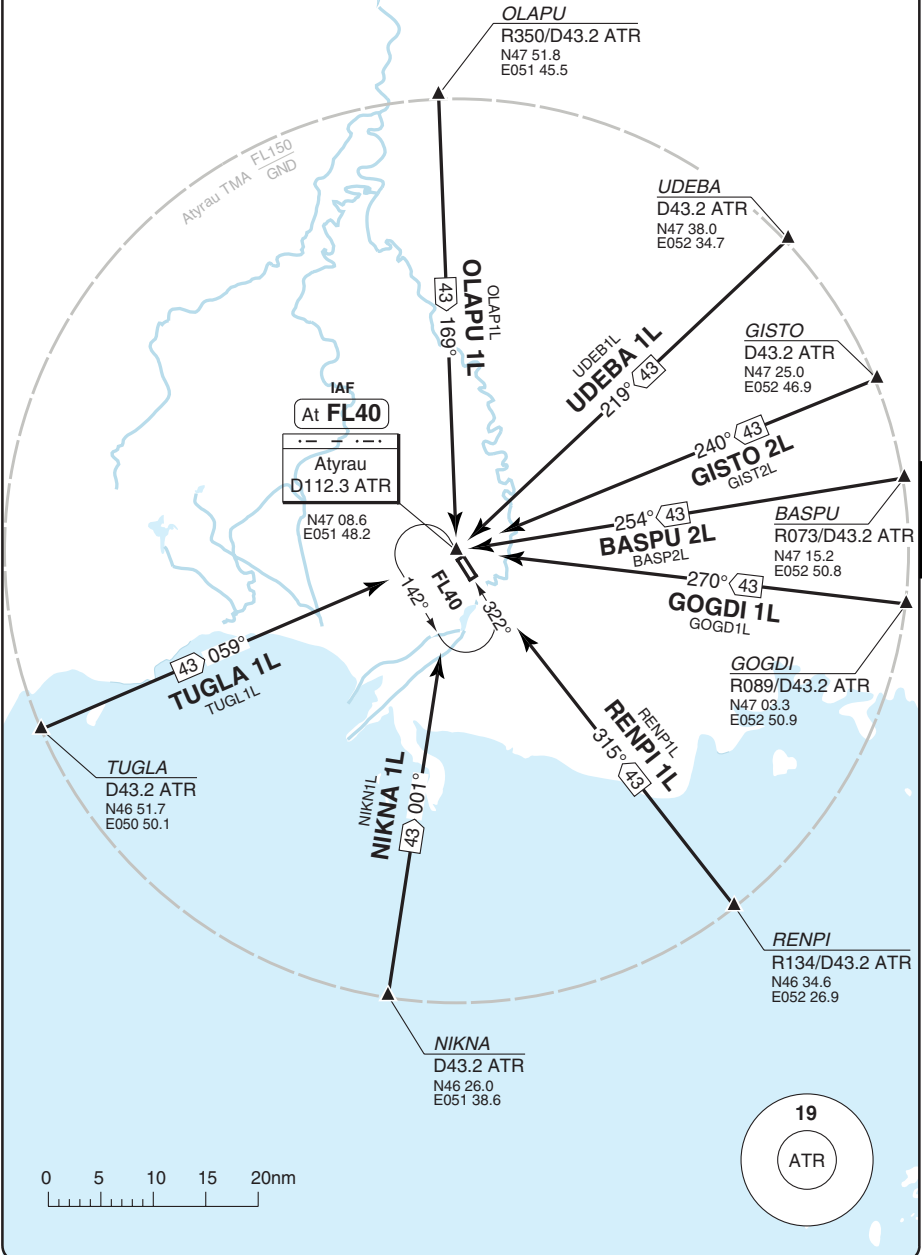
ATYRAU

STAR RWY 14 VOR

Atyrau APP 123.7	TWR 118.1	ATIS 127.4
----------------------------	---------------------	----------------------

TL 40 AD Elev -72

Warning
Crossing FL at AWY entry points are by ATC.



© Navitech - uatg01aaorgo

40 - 1

Change: New spec.

THIS CHART IS A PART OF NAVIGRAPH NDAC AND IS INTENDED FOR FLIGHT SIMULATION USE ONLY

STAR RWY 14 NDB

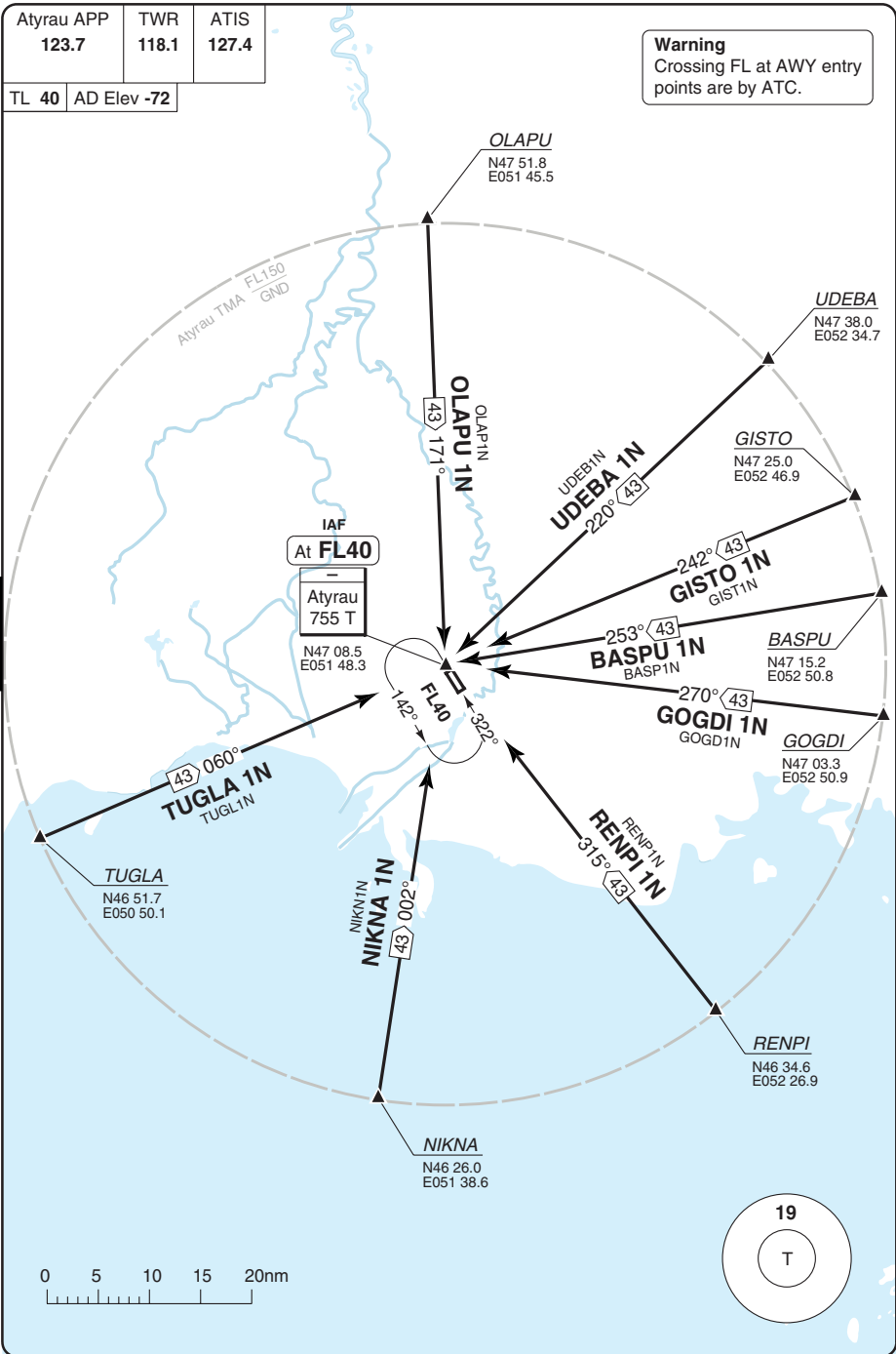
ATYRAU

Atyrau APP 123.7	TWR 118.1	ATIS 127.4
----------------------------	---------------------	----------------------

TL 40 AD Elev -72

Warning
Crossing FL at AWY entry points are by ATC.

40 - 2



© Navitech - uatg02aaorg0

Change: New spec.

THIS CHART IS A PART OF NAVIGRAPH NDAC AND IS INTENDED FOR FLIGHT SIMULATION USE ONLY

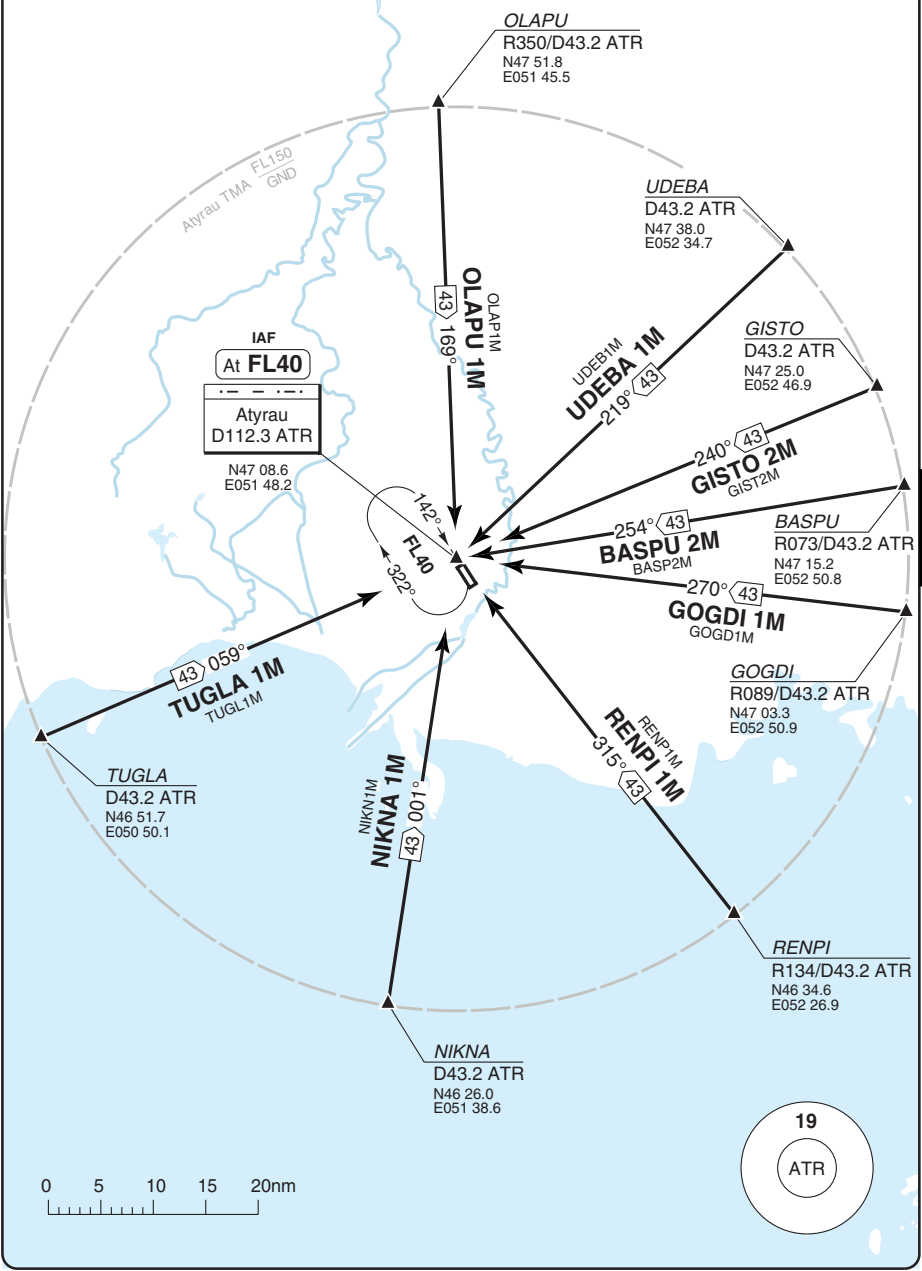
STAR RWY 32 VOR

ATYRAU

Atyrau APP 123.7	TWR 118.1	ATIS 127.4
----------------------------	---------------------	----------------------

TL 40 AD Elev -72

Warning
Crossing FL at AWY entry points are by ATC.



40 - 3

© Navitech - uatg03aaorgo

Change: New spec.

THIS CHART IS A PART OF NAVIGRAPH NDAC AND IS INTENDED FOR FLIGHT SIMULATION USE ONLY

STAR RWY 32 NDB

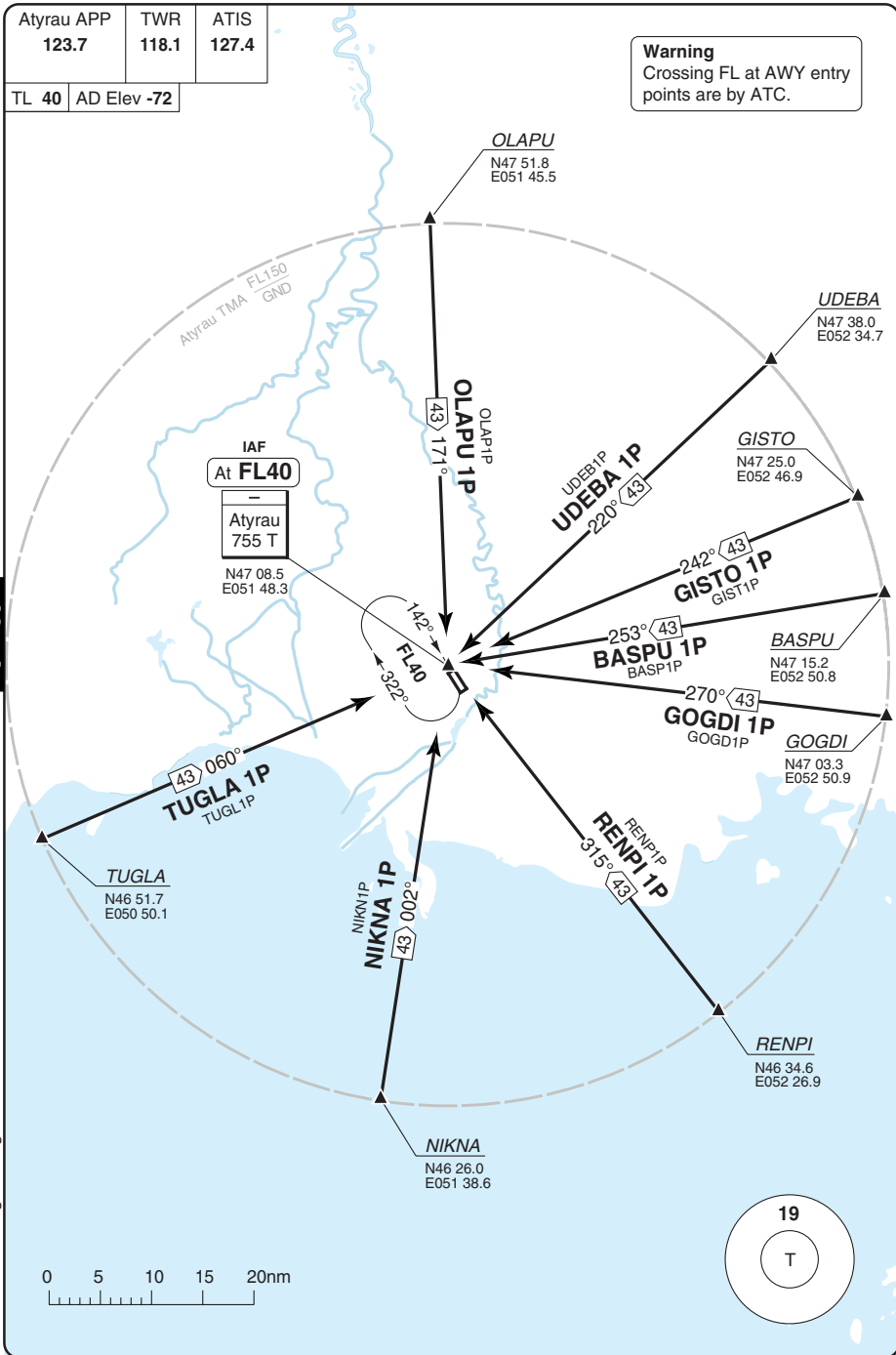
ATYRAU

Atyrau APP 123.7	TWR 118.1	ATIS 127.4
---------------------	--------------	---------------

TL 40 AD Elev -72

Warning
Crossing FL at AWY entry points are by ATC.

40 - 4



© Navitech - uatg04aaorg0

Change: New spec.

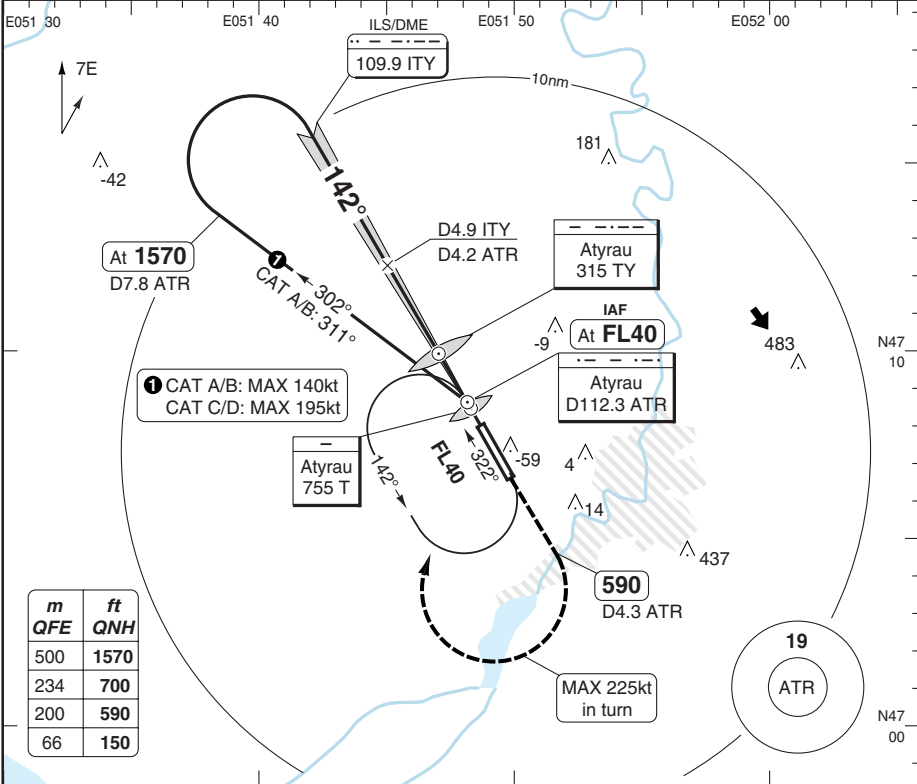
THIS CHART IS A PART OF NAVIGRAPH NDAC AND IS INTENDED FOR FLIGHT SIMULATION USE ONLY

ILS Z CAT I/II RWY 14

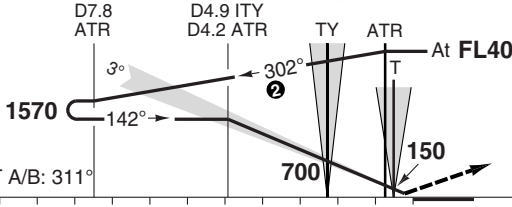
ATYRAU

Atyrau APP 123.7	TWR 118.1	ATIS 127.4
---------------------	--------------	---------------

ILS/DME 109.9 ITY	FAT 142°	THR Elev -73 -3hPa	AD Elev -72 -3hPa	TL 40	TA 1570
-------------------	----------	--------------------	-------------------	-------	---------



m	ft
500	1570
234	700
200	590
66	150



Climb on 142° to 590, at D4.3 **ATR** turn right to **ATR** climbing to **1570**.
COM FAIL: Climb to **FL40** to **ATR** and Join HP.
(MAX 225kt in turn)

nm	11	10	9	8	7	6	5	4	3	2	1	0	TCH 55
----	----	----	---	---	---	---	---	---	---	---	---	---	--------

ACFT	CAT II	ILS+DME
A		
B	RA 102	130 (200)
C	350m	550m
D		

LDA 3000x45
9842x147ft
P 3°

Note: Circling NA

© Navtech - uatg03iaip00

50 - 3

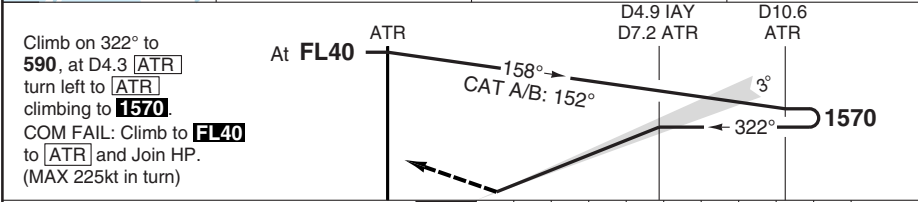
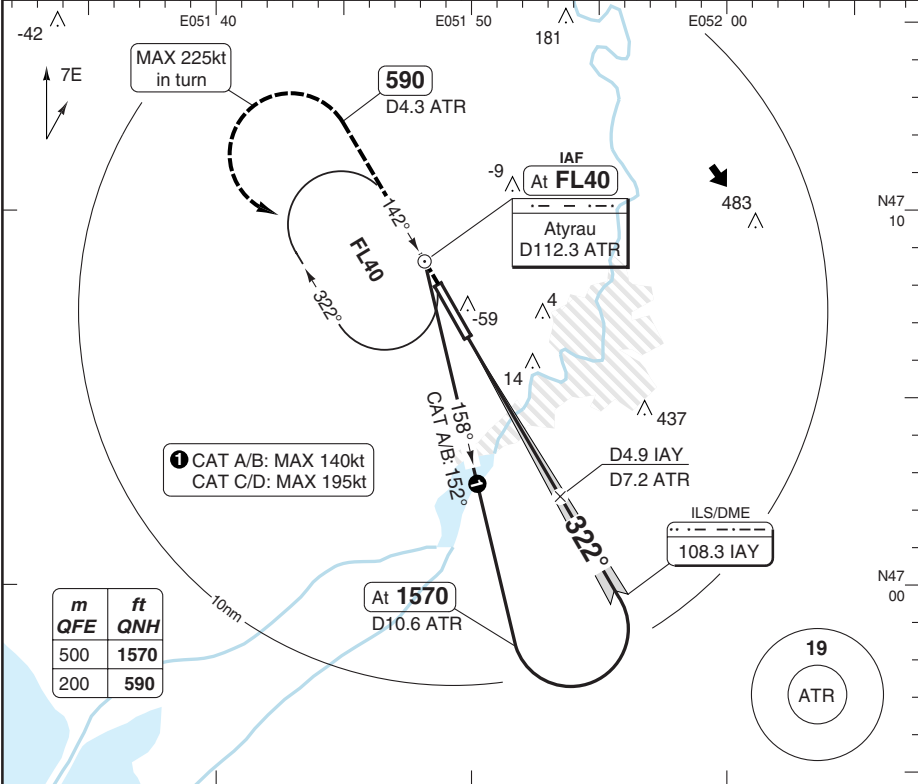
FALS

ILS Z RWY 32

ATYRAU

Atyrau APP 123.7	TWR 118.1	ATIS 127.4
----------------------------	---------------------	----------------------

ILS/DME 108.3 IAY	FAT 322°	THR Elev -72 -3hPa	AD Elev -72 -3hPa	TL 40	TA 1570
--------------------------	-----------------	---------------------------	--------------------------	--------------	----------------



TCH 51	0 1 2 3 4 5 6 7 8 9 10 nm
--------	---------------------------

ACFT	ILS+DME
A	
B	130 (200)
C	800m
D	

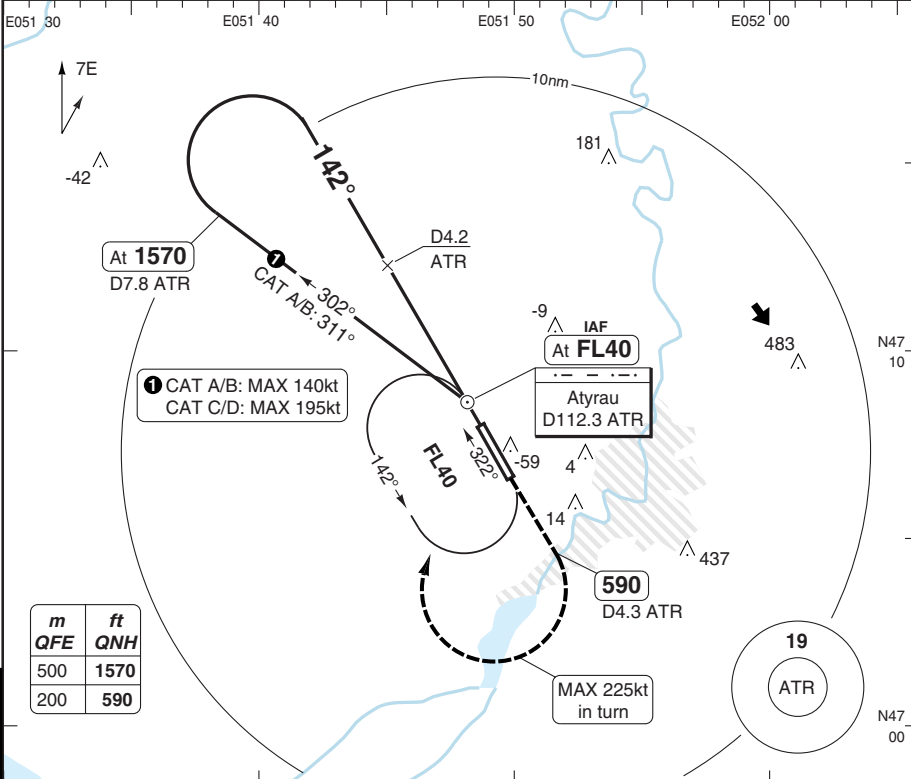
LDA 3000x45 9842x147ft

Note: Circling NA

VOR RWY 14

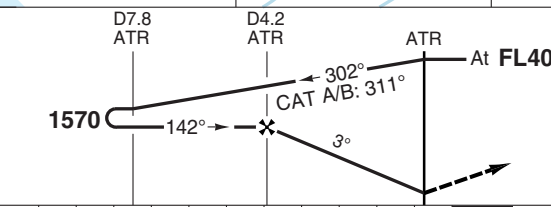
ATYRAU

Atyrau APP 123.7	TWR 118.1	ATIS 127.4				
VOR/DME 112.3 ATR	FAT 142°	THR Elev -73 -3hPa	AD Elev -72 -3hPa	TL 40	TA 1570	



PANS OPS

50 - 6



Climb on 142° to **590**, at D4.3 **ATR** turn right to **1570** climbing to **1570**.
COM FAIL: Climb to **FL40** to **ATR** and Join HP. (MAX 225kt in turn)

nm	11	10	9	8	7	6	5	4	3	2	1	0
ACFT	VOR+DME Note: Circling NA											
STATE	A	260 (328) 900m										
	B	260 (328) 1000m										
	C	260 (328) 1400m										
	D	260 (328) 1400m										
GS	80	100	120	140	160							
ROD 3.0°	430	540	650	760	860							
DME ATR	3.0° ALT	LDA 3000x45 9842x147ft P 3°										
4.2	1570											
4	1510											
3	1180											
2	920											

© Navtech - uatg06iaip00

FALS

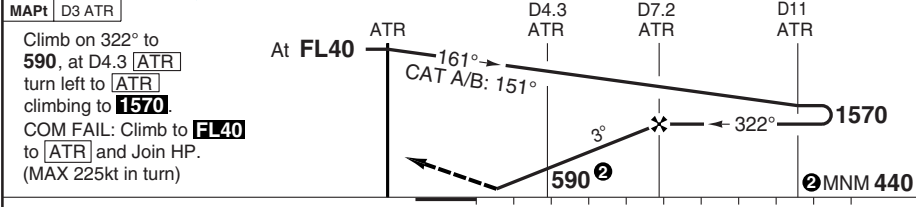
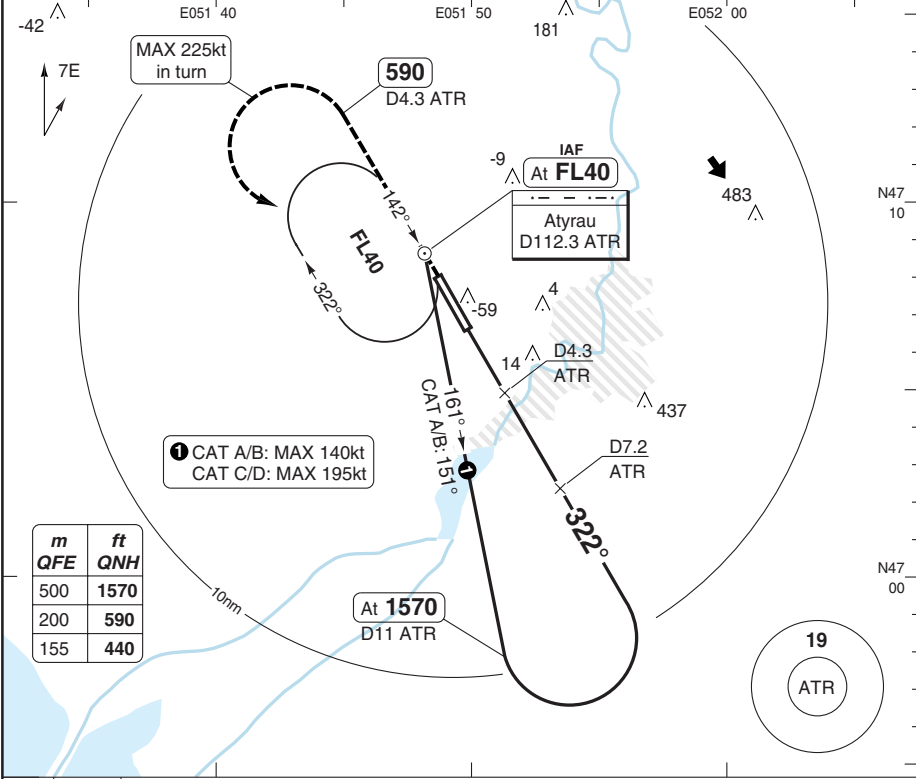
Change: New spec.

VOR RWY 32

ATYRAU

Atyrau APP 123.7	TWR 118.1	ATIS 127.4	
----------------------------	---------------------	----------------------	--

VOR/DME 112.3 ATR	FAT 322°	THR Elev -72 -3hPa	AD Elev -72 -3hPa	TL 40	TA 1570
--------------------------	-----------------	---------------------------	--------------------------	--------------	----------------



ACFT	VOR+DME	VOR	Note: Circling NA					DME	3.0°	LDA 3000x45
A	260 (328) 900m	440 (509) 1500m						ATR	ALT	9842x147ft
B	260 (328) 1000m							7.2	1570	
C		440 (509) 1600m						7	1500	
D	260 (328) 1400m							6	1180	
	GS	80	100	120	140	160				
	ROD 3.0°	430	540	650	760	870				

© Navtech - uatg07iaip00

50 - 7

NDB RWY 14 2NDB

ATYRAU

Ayrau APP 123.7	TWR 118.1	ATIS 127.4
---------------------------	---------------------	----------------------

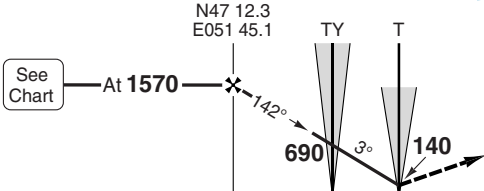
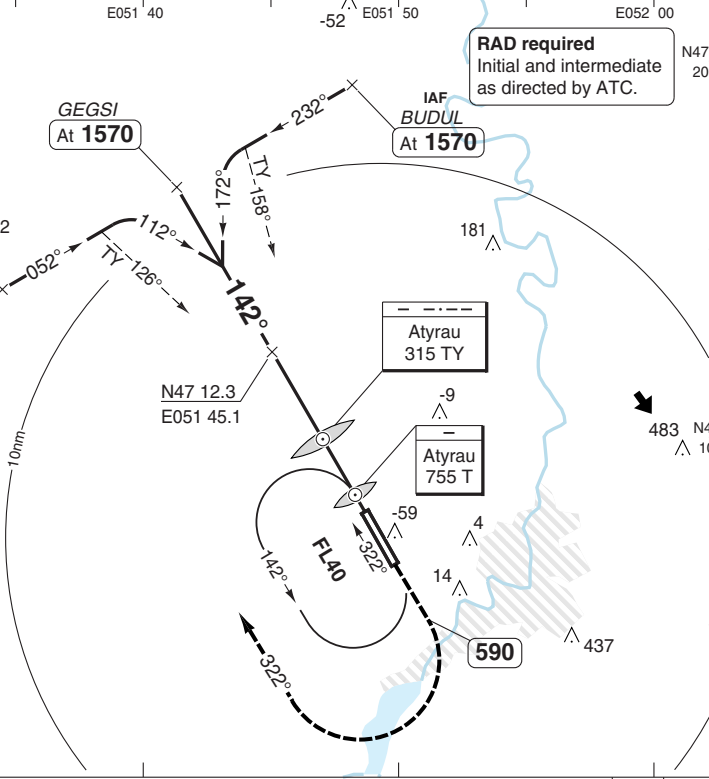
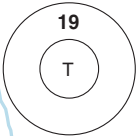
NDB 315 TY	FAT 142°	THR Elev -73 -3hPa	AD Elev -72 -3hPa	TL 40	TA 1570
-------------------	-----------------	---------------------------	--------------------------	--------------	----------------

RAD required
Initial and intermediate
as directed by ATC.

PANS OPS

50 - 8

m	ft
500	1570
232	690
200	590
65	140



Climb on 142° to 590,
turn right to 322°
climbing to 1570.

ACFT	2NDB
A	280 (350) 900m
B	280 (350) 1000m
C	280 (350) 1400m
D	280 (350) 1400m

Note: Circling NA

LDA 3000x45
9842x147ft
P 3°



FALS

© Navtech - uatg08iaip00

Change: New spec.

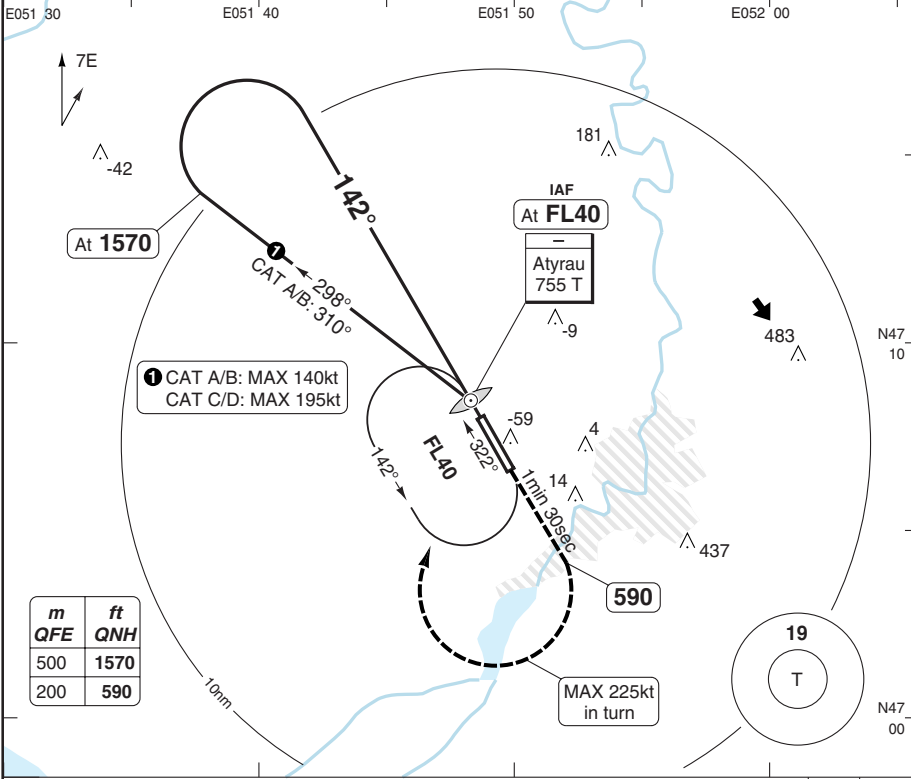
THIS CHART IS A PART OF NAVIGRAPH NDAC AND IS INTENDED FOR FLIGHT SIMULATION USE ONLY

NDB RWY 14

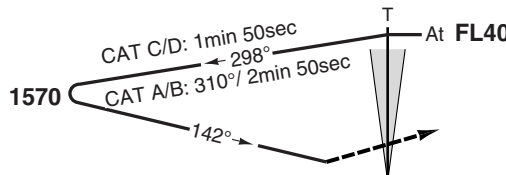
ATYRAU

Atyrau APP 123.7	TWR 118.1	ATIS 127.4	
----------------------------	---------------------	----------------------	--

NDB 755 T	FAT 142°	THR Elev -73 -3hPa	AD Elev -72 -3hPa	TL 40	TA 1570
------------------	-----------------	---------------------------	--------------------------	--------------	----------------



50 - 9



Climb on 142° to **590**, after passing **T** maintain 142° for 1min 30sec, turn right to **T** climbing to **1570**.
COM FAIL: Climb to **FL40** to **T** and Join HP. (MAX 225kt in turn)

nm	11	10	9	8	7	6	5	4	3	2	1	0
----	----	----	---	---	---	---	---	---	---	---	---	---

ACFT	NDB	NDB a
A		330 (394) 1300m
B	330 (394) 1100m	
C		330 (394) 1500m
D	330 (394) 1400m	

Note: Circling NA
a Non-CDFA

LDA 3000x45
9842x147ft
P 3°



FALS

© Navtech - uatg09iaip00

Change: New spec.

THIS CHART IS A PART OF NAVIGRAPH NDAC AND IS INTENDED FOR FLIGHT SIMULATION USE ONLY

NDB RWY 32

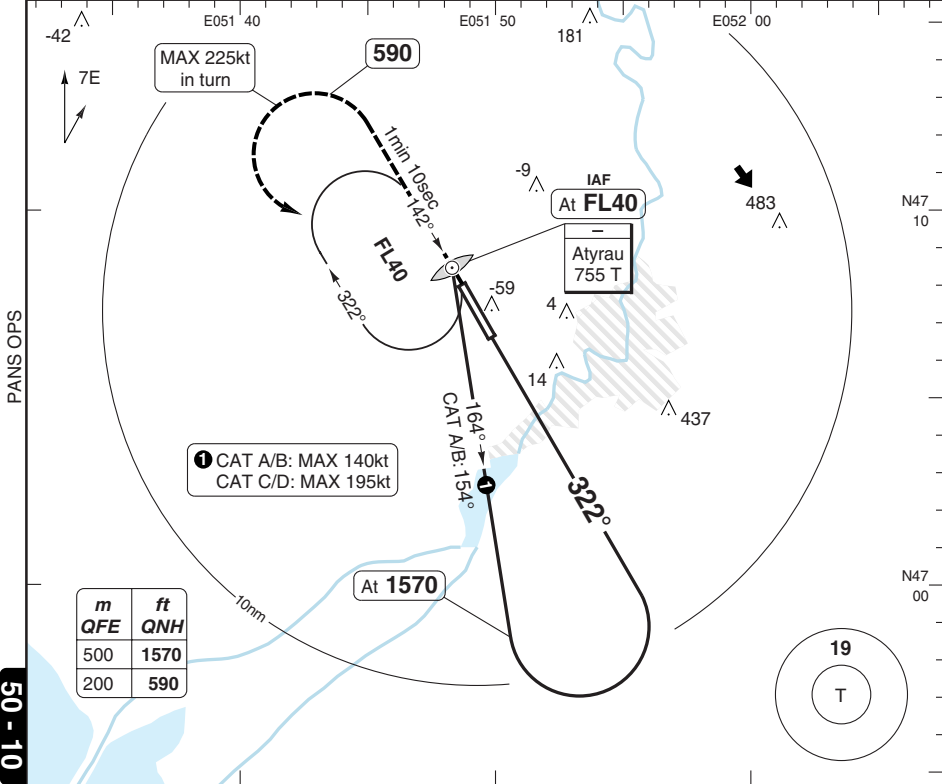
ATYRAU

Atyrau APP
123.7

TWR
118.1

ATIS
127.4

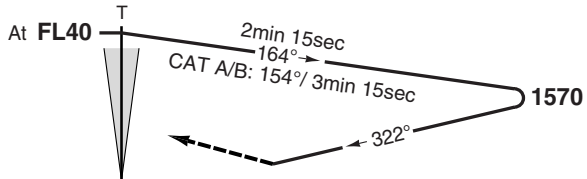
NDB **755 T** | FAT **322°** | THR Elev **-72 -3hPa** | AD Elev **-72 -3hPa** | TL **40** | TA **1570**



50 - 10

MAPt MM / T

Climb on 322° to 590, after passing T, maintain 322° for 1min 10sec, turn left to T climbing to 1570.
COM FAIL: Climb to FL40 to T and Join HP. (MAX 225kt in turn)



ACFT	BC NDB	BC NDB a
A	390 (459) 1400m	390 (459) 1600m
B		
C	390 (459) 1600m	390 (459) 1800m
D		

Note: Circling NA
a Non-CDFA

LDA 3000x45
9842x147ft

© Navtech - uatg10iaip00

FALS

Change: New spec.

THIS CHART IS A PART OF NAVIGRAPH NDAC AND IS INTENDED FOR FLIGHT SIMULATION USE ONLY