

Airport information:

Country: Kazakhstan

City: ASTANA

Coordinates: N 51° 01.3', E071 28.0

Elevation: 1165

Customs: Customs

Fuel: TS-1 (equivalent to Jet A1)

RFF: CAT 9

hours: H24

Runways:

Runway 04

Takeoff length: 3501, Landing length: 3501

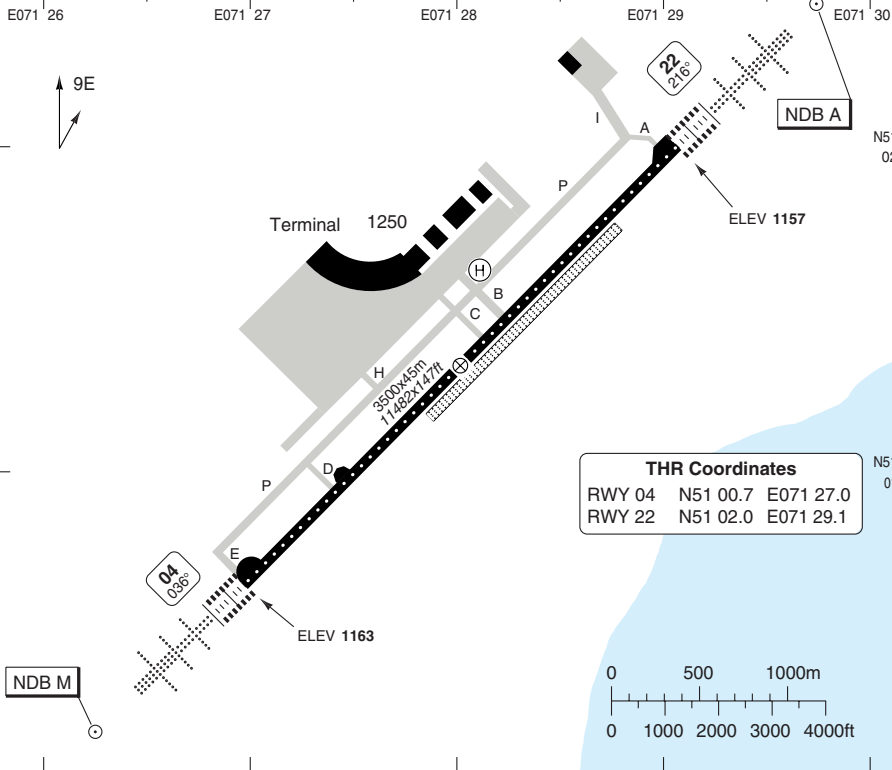
Runway 22

Takeoff length: 3501, Landing length: 3501

AERODROME

Astana GND 119.6	TWR 118.7	RAD 120.7	ATIS 127.7
----------------------------	---------------------	---------------------	----------------------

AD Elev **1165** ARP: N51 01.3 E071 28.0 RFF: CAT 9 AD HR: H24



THR Coordinates			
RWY 04	N51 00.7	E071 27.0	
RWY 22	N51 02.0	E071 29.1	

RWY	Slope	TORA m/ft	LDA m/ft	ALS	REDL	RCLL	Additional
04	0	3500 / 11482	3500 / 11482	H-A	H	15m	P 3°
22	0	3500 / 11482	3500 / 11482	H-A	H	15m	P 3°

STATE TAKE OFF MINIMA

RWY	Facilities	RVR	
		A B	C D
04/22	REDL + RCLL	200m	200m
	REDL (day only)	300m	300m
	REDL (night only)	300m	400m
	NIL (day only)	300m	500m
	NIL (night only)	300m	700m

© Navitech - uacc01laorg0

Change: LDA, RWY, TORA

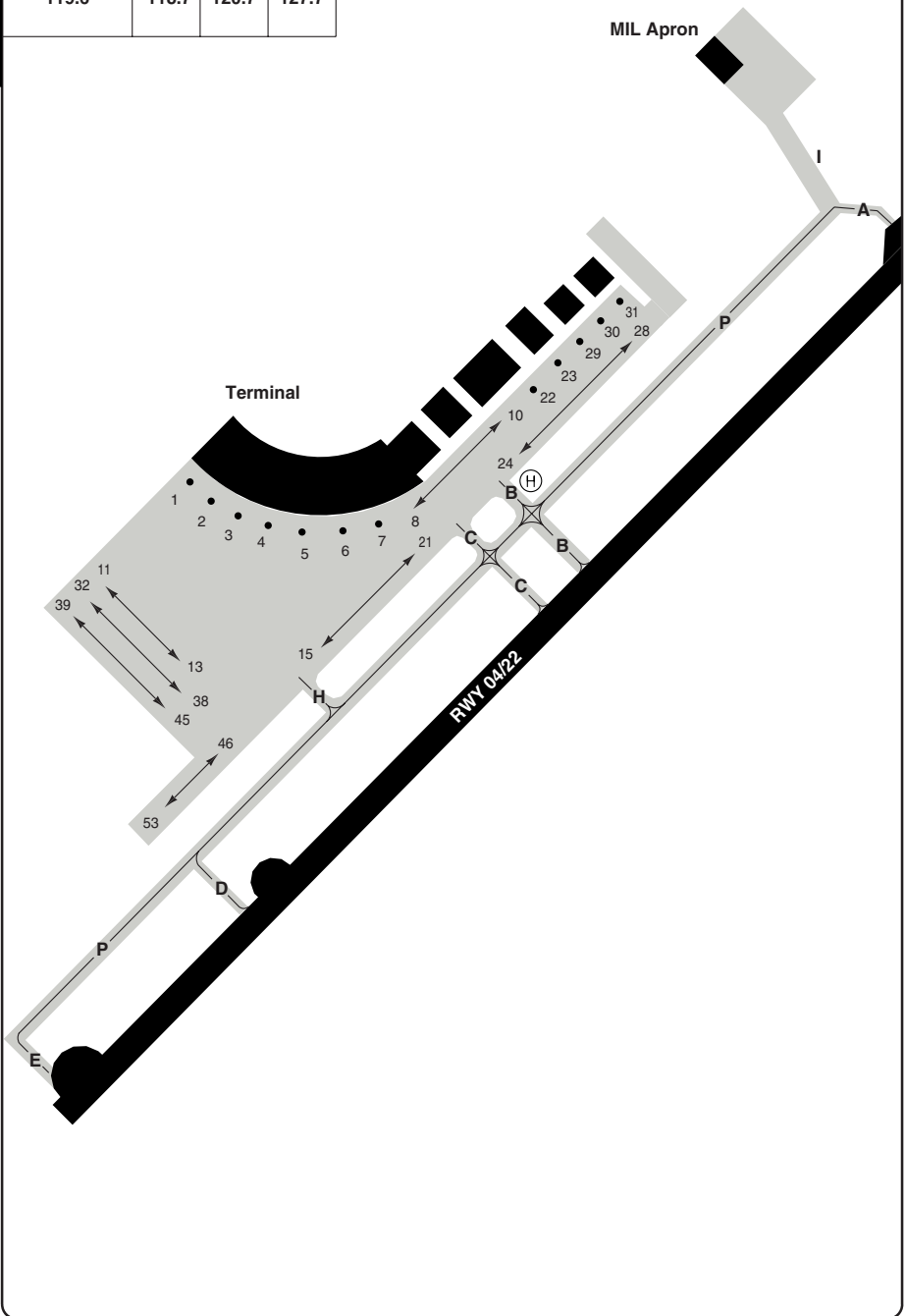
THIS CHART IS A PART OF NAVIGRAPH NDAC AND IS INTENDED FOR FLIGHT SIMULATION USE ONLY

AERODROME Overview

ASTANA

10 - 2

Astana GND 119.6	TWR 118.7	RAD 120.7	ATIS 127.7
---------------------	--------------	--------------	---------------



© Navitech - uacc02.laorg0

Change: New print

THIS CHART IS A PART OF NAVIGRAPH NDAC AND IS INTENDED FOR FLIGHT SIMULATION USE ONLY

GENERAL

ASTANA

10-0-1

WEF 17 NOV 11

1. The vertical separation system at this aerodrome will be changed to Table a) of ICAO Appendix 3, Annex 2, expressed in Feet, as shown in the table.
2. Clearances below the Trans Alt/Trans Lev will continue to be in metres QFE.
3. Any Flight Levels shown on the charts for this aerodrome will change to the nearest equivalent shown below:

True track angle	
000° to 179°	180° to 359°
FL	FL
010	020
030	040
050	060
070	080
090	100
110	120
130	140
150	160
170	180
190	200
210	220
230	240
250	260
270	280
290	300
310	320
330	340
350	360
370	380
390	400
410	430

GENERAL

ASTANA

GENERAL

1. **WARNING**
Bird hazard.
2. **TWY RESTRICTION**
TWY I width 20m/65ft.
3. **PARKING**
 - 3.1 Stands 15-21 for ACFT not exceeding wingspan 29m/95ft.
 - 3.2 Exit stands 1-10, 22, 23 by towing.
Enter stands 11-21, 24-28 by towing.

ARRIVAL

1. **SPEED**
Within TMA:
Between FL98 and FL60 MAX 250kt.
Between FL60 and circuit/circling ALT or 15nm from TDZ maintain 200-220kt, within 15nm from TDZ until final APCH maintain 175-195kt.
2. **NOISE ABATEMENT PROCEDURE**
 - 2.1 Avoid power increase between 8 and 9nm from THR.
 - 2.2 Attain landing configuration not later than 5.4nm from THR.
3. **LOW VISIBILITY PROCEDURE**
 - 3.1 Report "RWY vacated" after passing light indicator, indicating ILS/LOC sensitive area.
 - 3.2 ACFT are permitted to taxi on the apron only under guidance of a follow-me car.
 - 3.3 ACFT taxiing out from their stands are accompanied by a follow-me car up to the TWYs.

DEPARTURE

1. **NOISE ABATEMENT PROCEDURE**
Procedure A:
TKOF to 450m (1500ft) above aerodrome elevation.
TKOF power.
TKOF flap:
 - climb at V2+20 .

At 450m (1500ft):

 - reduce thrust to not less than climb power/thrust.

450m (1500ft): to 900m (3000ft)

 - climb at V2+20.

At 900m (3000ft):

 - accelerate smoothly to en-route climb speed with flap retraction on schedule.

10 - 3

RADAR Minimum Altitudes

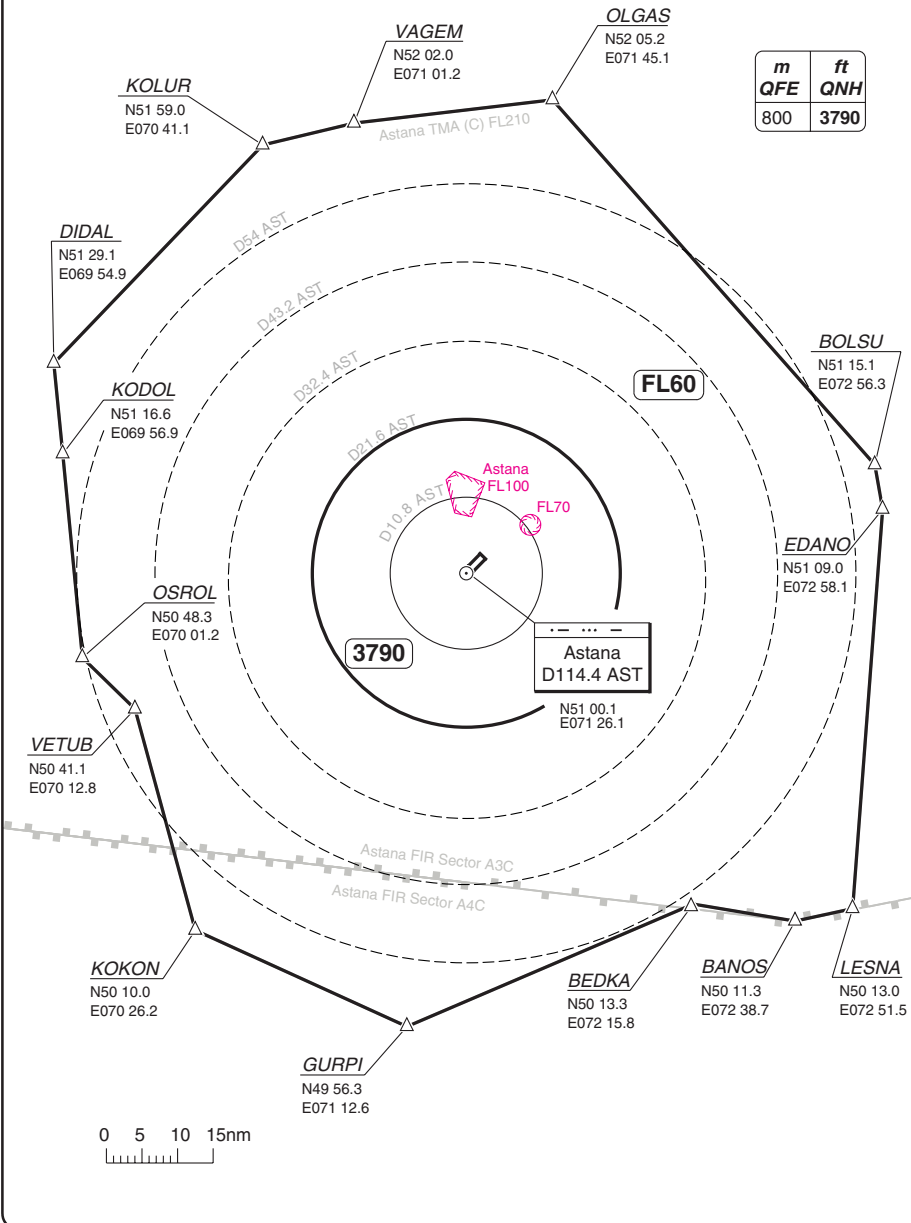
ASTANA

Astana APP 124.6	RAD 120.7	TWR 118.7	GND 119.6	ATIS 127.7
----------------------------	---------------------	---------------------	---------------------	----------------------

TL **60** AD Elev **1165**

NOTE:
Levels assigned by ATC include correction for low temperature effect when necessary.

m	ft
QFE	QNH
800	3790



20 - 3

AREA East

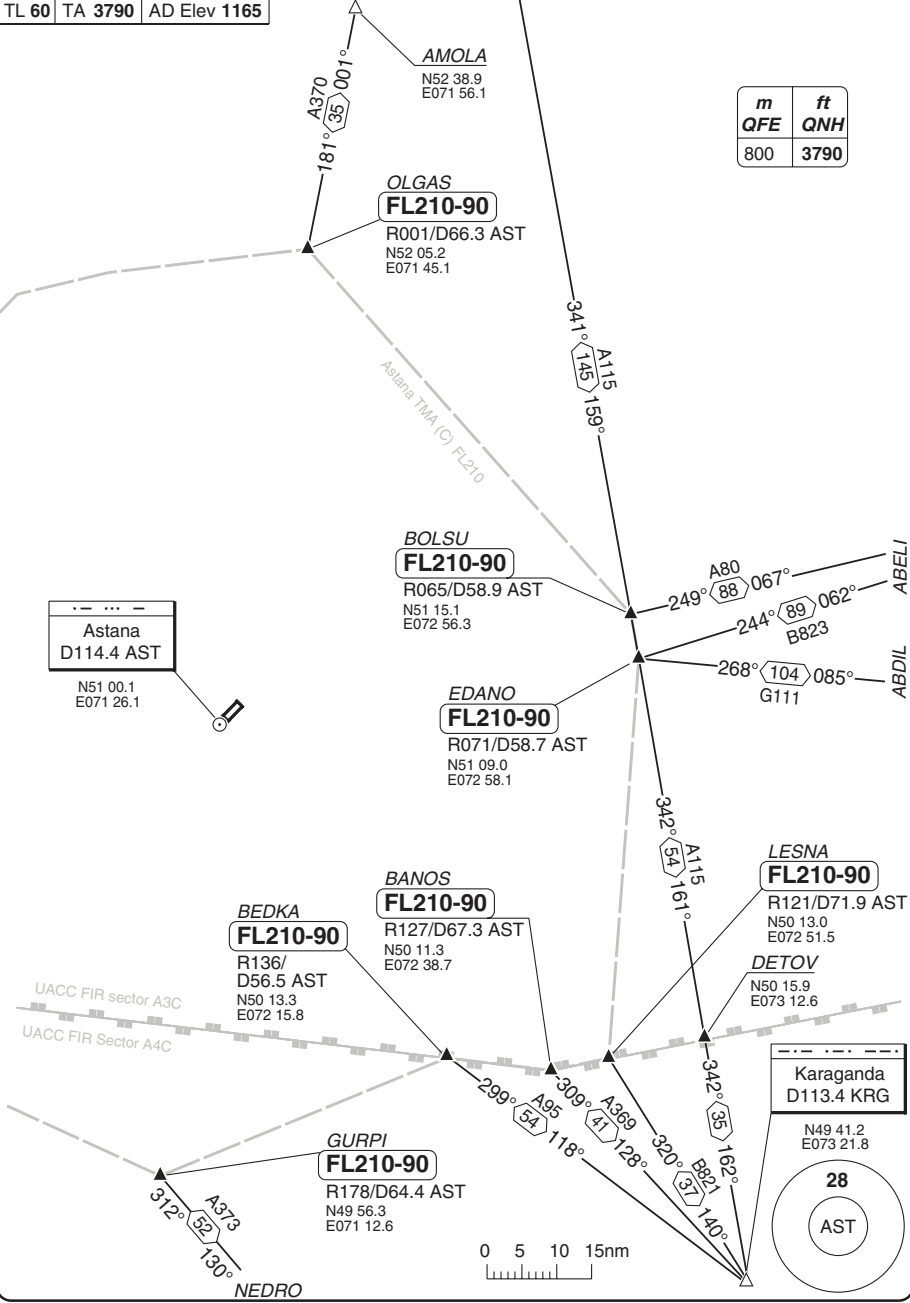
ASTANA

20 - 1

Astana APP 124.6	RAD 120.7	TWR 118.7	GND 119.6	ATIS 127.7	<i>POBUR</i>
----------------------------	---------------------	---------------------	---------------------	----------------------	--------------

TL 60	TA 3790	AD Elev 1165
--------------	----------------	---------------------

m	ft
QFE	QNH
800	3790



© Navitech - uacc01taorg0

Change: ABELI, Conversion table, FL, TL, TMA

THIS CHART IS A PART OF NAVIGRAPH NDAC AND IS INTENDED FOR FLIGHT SIMULATION USE ONLY

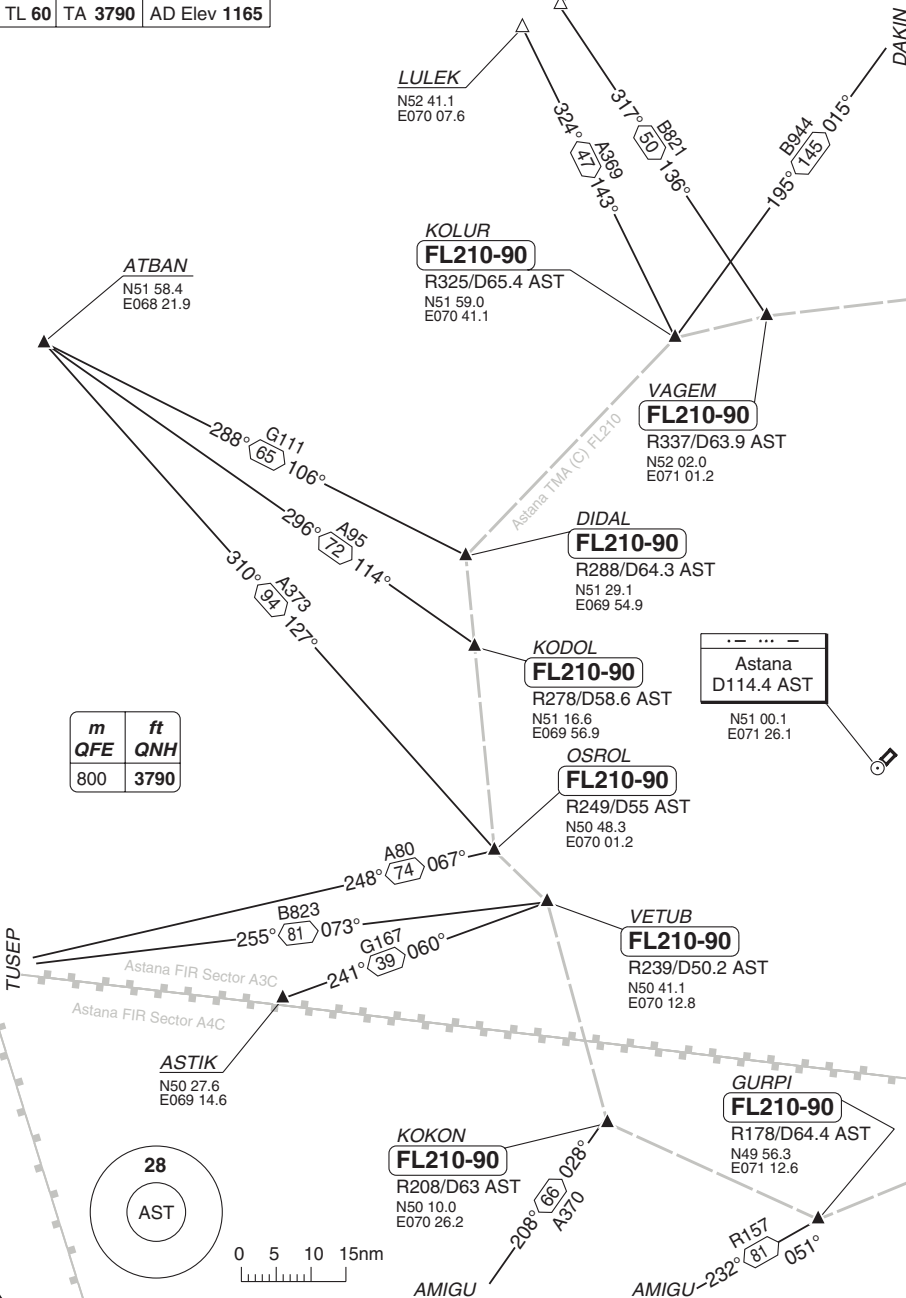
AREA West

ASTANA

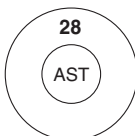
Astana APP 124.6	RAD 120.7	TWR 118.7	GND 119.6	ATIS 127.7
---------------------	--------------	--------------	--------------	---------------

TL 60 TA 3790 AD Elev 1165

20 - 2



m	ft
QFE	QNH
800	3790



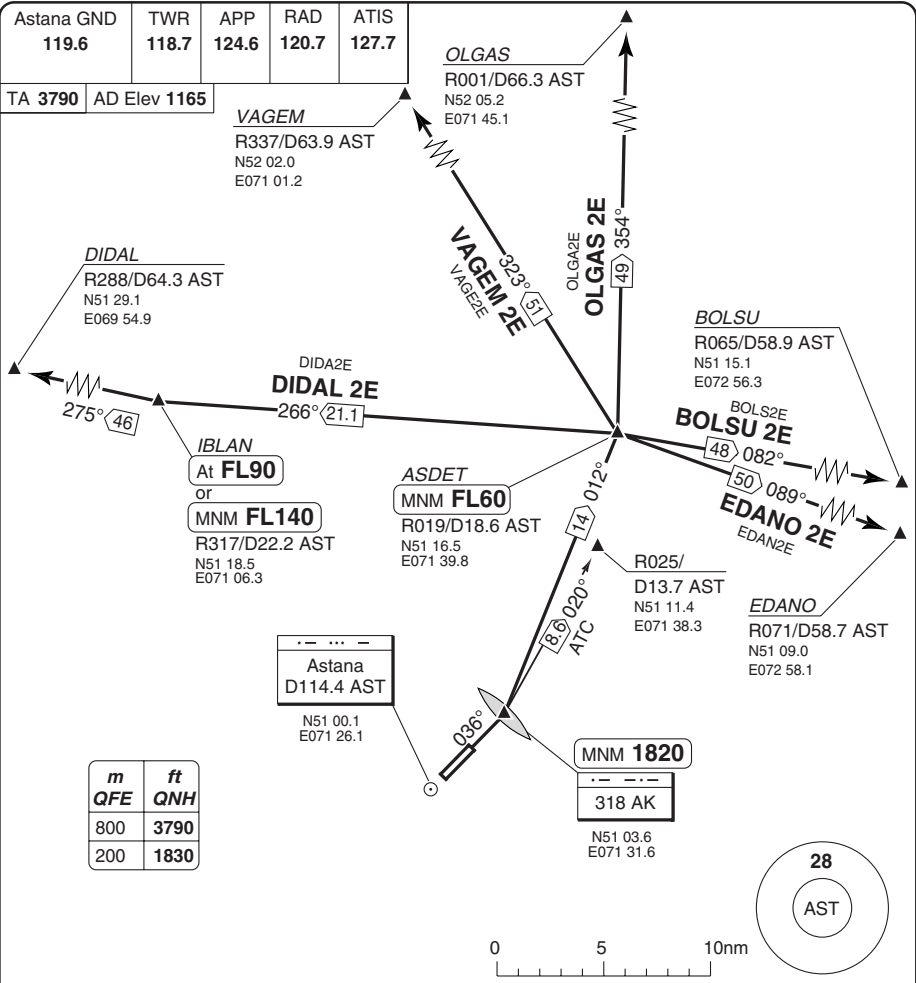
© Navitech - uacc02taorg

Change: AWYs , Conversion table, FL, TL, TMA

THIS CHART IS A PART OF NAVIGRAPH NDAC AND IS INTENDED FOR FLIGHT SIMULATION USE ONLY

SID RWY 04 North, East

ASTANA



SPEED: Departure turn MAX 225kt.

ALT RESTRICTION: If unable to cross AK at MNM 1820ft continue climb on 020° to R025/D13.7 AST, then by ATC instructions.

MNM CLIMB GRADIENT: 4.7% to ASDET.

SID	Routeing	Altitudes
(INITIAL CLIMB)	Climb on 036° to MNM 1820 - turn left (not after AK) - 012° - ASDET - follow SID.	ASDET MNM FL60
BOLSU 2E	Turn right - 082° - BOLSU.	
DIDAL 2E	Turn left - 266° - IBLAN - DIDAL.	IBLAN At FL90 or MNM FL140
EDANO 2E	Turn right - 089° - EDANO.	
OLGAS 2E	Turn left - 354° - OLGAS.	
VAGEM 2E	Turn left - 323° - VAGEM.	

Change: Conversion table, FL

THIS CHART IS A PART OF NAVIGRAPH NDAC AND IS INTENDED FOR FLIGHT SIMULATION USE ONLY

SID RWY 04 South, West

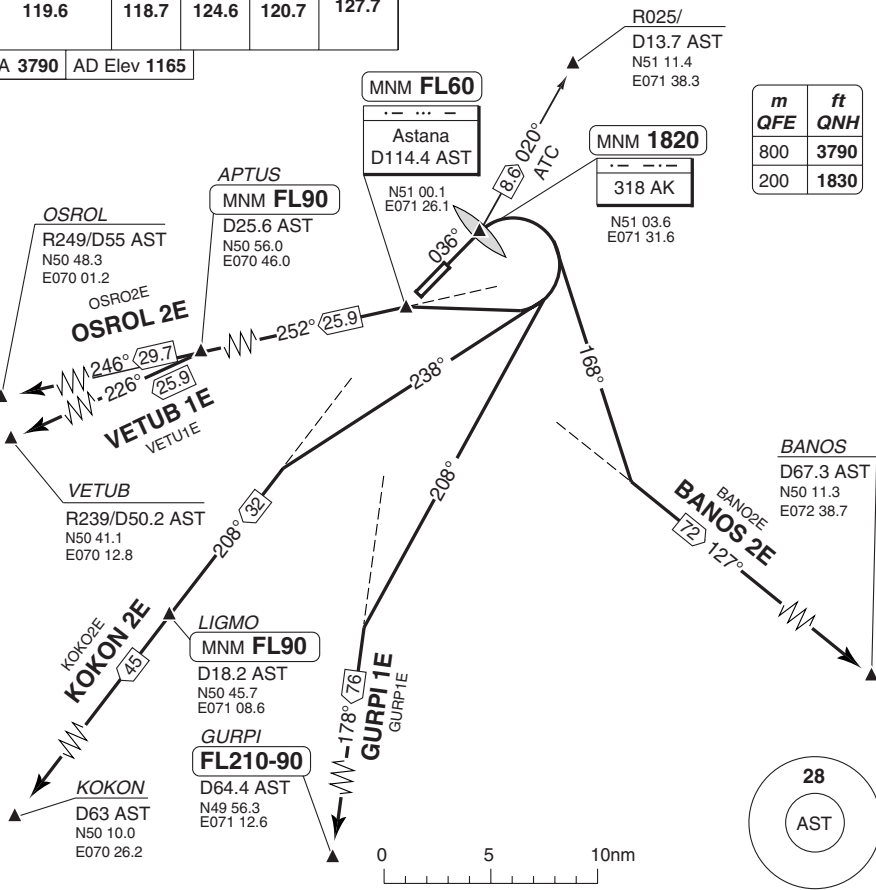
ASTANA

Astana GND 119.6	TWR 118.7	APP 124.6	RAD 120.7	ATIS 127.7
---------------------	--------------	--------------	--------------	---------------

TA 3790 AD Elev 1165

m	ft
800	3790
200	1830

30 - 2



SPEED: Departure turn MAX 225kt.

ALT RESTRICTION: If unable to cross AK at MNM 1820ft continue climb on 020° to R025/D13.7 AST, then by ATC instructions.

MNM CLIMB GRADIENT: 4.7% to ASDET.

SID	Routing	Altitudes
(INITIAL CLIMB)	Climb on 036° to MNM 1820 - turn right (not after AK) - follow SID.	
BANOS 2E	Turn right - 168° - intcp R127 AST - BANOS.	
GURPI 1E	Turn right - 208° - intcp R178 AST - GURPI.	GURPI FL210-90
KOKON 2E	Turn right - 238° - intcp R208 AST - LIGMO - KOKON.	LIGMO MNM FL90
OSROL 2E	Turn right - AST - 252° - APTUS - turn left - 246° - OSROL.	AST MNM FL60 APTUS MNM FL90
VETUB 1E	Turn right - AST - 252° - APTUS - turn left - 226° - VETUB.	

© Navitech - uacc02daorg0

Change: Conversion table, FL

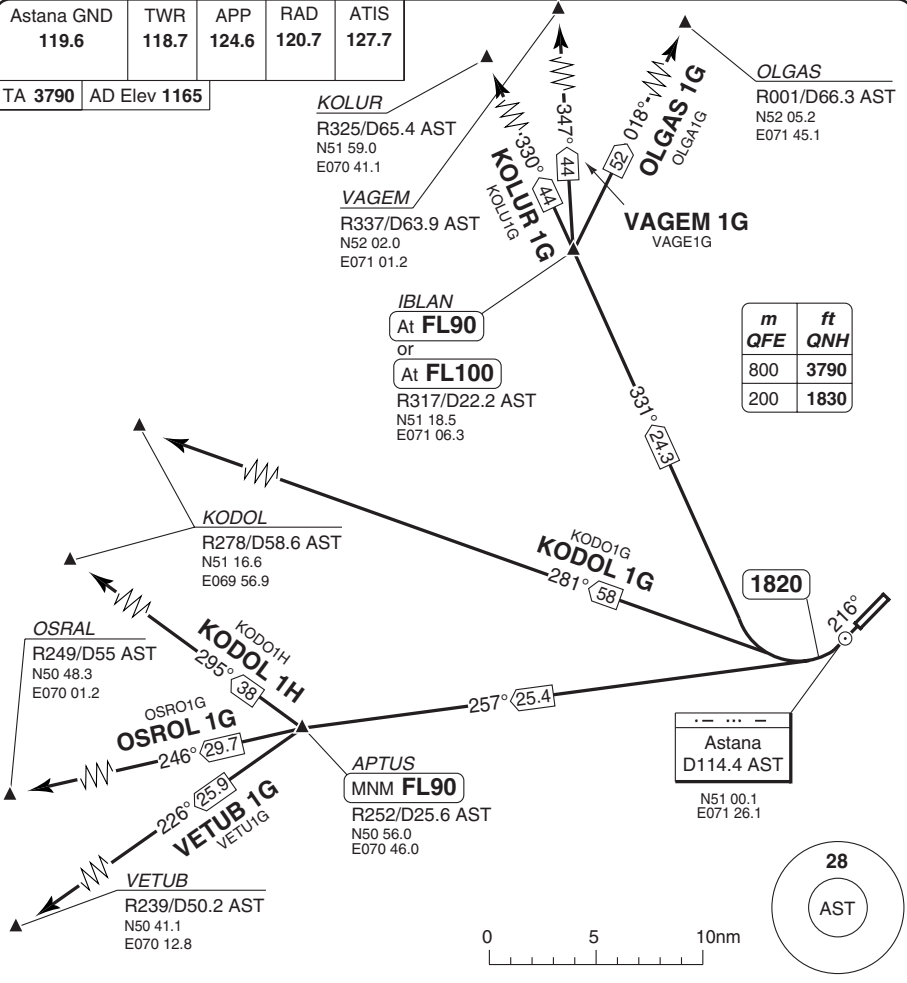
THIS CHART IS A PART OF NAVIGRAPH NDAC AND IS INTENDED FOR FLIGHT SIMULATION USE ONLY

SID RWY 22 North, West

ASTANA

Astana GND 119.6	TWR 118.7	APP 124.6	RAD 120.7	ATIS 127.7
---------------------	--------------	--------------	--------------	---------------

TA 3790 AD Elev 1165



30 - 3

SPEED: Departure turn MAX 225kt.

SID	Routing	Altitudes
KODOL 1G	Climb on 216° to 1820 - turn right - 281° - KODOL.	
KODOL 1H	Climb on 216° to 1820 - turn right - 257° - APTUS - turn right - 295° - KODOL.	APTUS MNM FL90
KOLUR 1G	Climb on 216° to 1820 - turn right - 331° - IBLAN - turn left - 330° - KOLUR.	IBLAN At FL90 or At FL100
OLGAS 1G	Climb on 216° to 1820 - turn right - 331° - IBLAN - turn right - 018° - OLGAS.	IBLAN At FL90 or At FL100
OSROL 1G	Climb on 216° to 1820 - turn right - 257° - APTUS - turn left - 246° - OSROL.	APTUS MNM FL90
VAGEM 1G	Climb on 216° to 1820 - turn right - 331° - IBLAN - turn right - 347° - VAGEM.	IBLAN At FL90 or At FL100
VETUB 1G	Climb on 216° to 1820 - turn right - 257° - APTUS - turn left - 226° - VETUB.	APTUS MNM FL90

© Navitech - uacc03daorg0

Change: Conversion table, FL

THIS CHART IS A PART OF NAVIGRAPH NDAC AND IS INTENDED FOR FLIGHT SIMULATION USE ONLY

SID RWY 22 East, South

ASTANA

Astana GND 119.6	TWR 118.7	APP 124.6	RAD 120.7	ATIS 127.7
---------------------	--------------	--------------	--------------	---------------

TA 3790 AD Elev 1165

Astana
D114.4 AST
N51 00.1
E071 26.1

BOLSU
R065/D58.9 AST
N51 15.1
E072 56.3

BOLSU 1G
64 061°

EDANO 1G
63 068°
EDAN1G

MNM FL70
R083/
D18.6 AST
N50 59.4
E071 55.5

EDANO
R071/D58.7 AST
N51 09.0
E072 58.1

1820

207° 15.7

LIGMO
At **FL60**
or
At **FL70**
R208/D18.2 AST
N50 45.7
E071 08.6

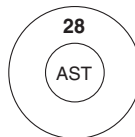
KOKON 1G
KOKO1G
208° 45.1

KOKON
R208/D63 AST
N50 10.0
E070 26.2

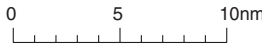
BEDKA 1G
BEDK1G
57 132°

BEDKA 1H
BEDK1H
54 117°

m	ft
QFE	QNH
800	3790
200	1830



BEDKA
R136/D56.5 AST
N50 13.3
E072 15.8



30 - 4

SPEED: Departure turn MAX 225kt.

SID	Routeing	Altitudes
BEDKA 1G	Climb on 216° to 1820 - turn left - 132° - BEDKA.	
BEDKA 1H	Climb on 216° to 1820 - turn left - 207° - LIGMO - turn left - 117° - BEDKA.	LIGMO At FL60 or At FL70
BOLSU 1G	Climb on 216° to 1820 - turn left - 061° - BOLSU.	
EDANO 1G	Climb on 216° to 1820 - turn left - 068° - EDANO.	D18.6 AST MNM FL70
KOKON 1G	Climb on 216° to 1820 - turn left - 207° - LIGMO - turn right - 208° - KOKON.	LIGMO At FL60 or At FL70

Change: Conversion table, FL

STAR RWY 04 from North, West

ASTANA

Astana APP	RAD	TWR	GND	ATIS
124.6	120.7	118.7	119.6	127.7

TL 60 AD Elev 1165

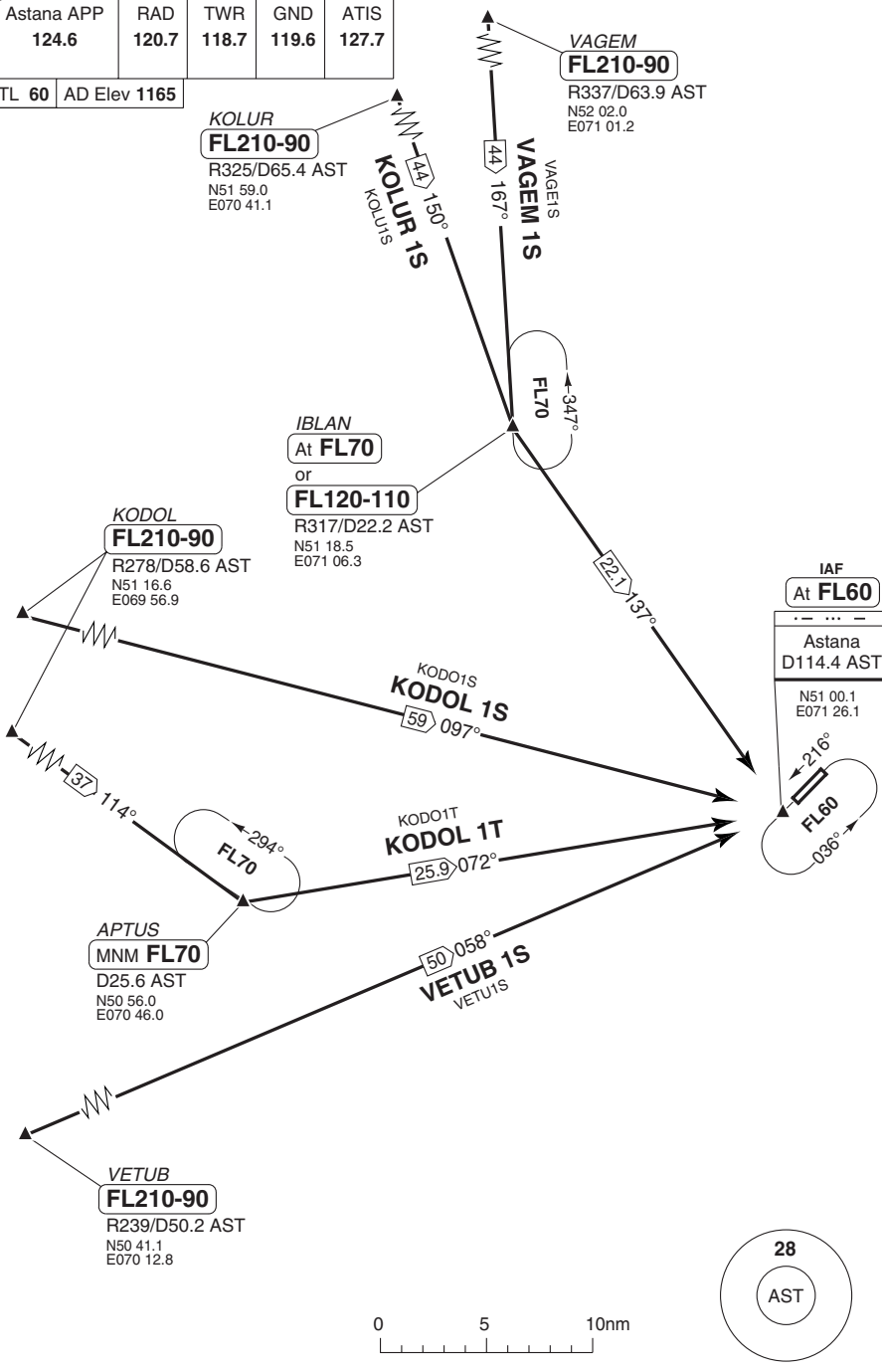
KOLUR
FL210-90
R325/D65.4 AST
N51 59.0
E070 41.1

VAGEM
FL210-90
R337/D63.9 AST
N52 02.0
E071 01.2

IBLAN
At **FL70**
or
FL120-110
R317/D22.2 AST
N51 18.5
E071 06.3

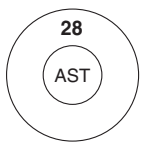
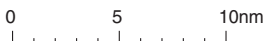
KODOL
FL210-90
R278/D58.6 AST
N51 16.6
E069 56.9

IAF
At **FL60**
Astana
D114.4 AST
N51 00.1
E071 26.1



40 - 1

© Navitech - uacc01aaccrg0



Change: Conversion table, FL, TL

THIS CHART IS A PART OF NAVIGRAPH NDAC AND IS INTENDED FOR FLIGHT SIMULATION USE ONLY

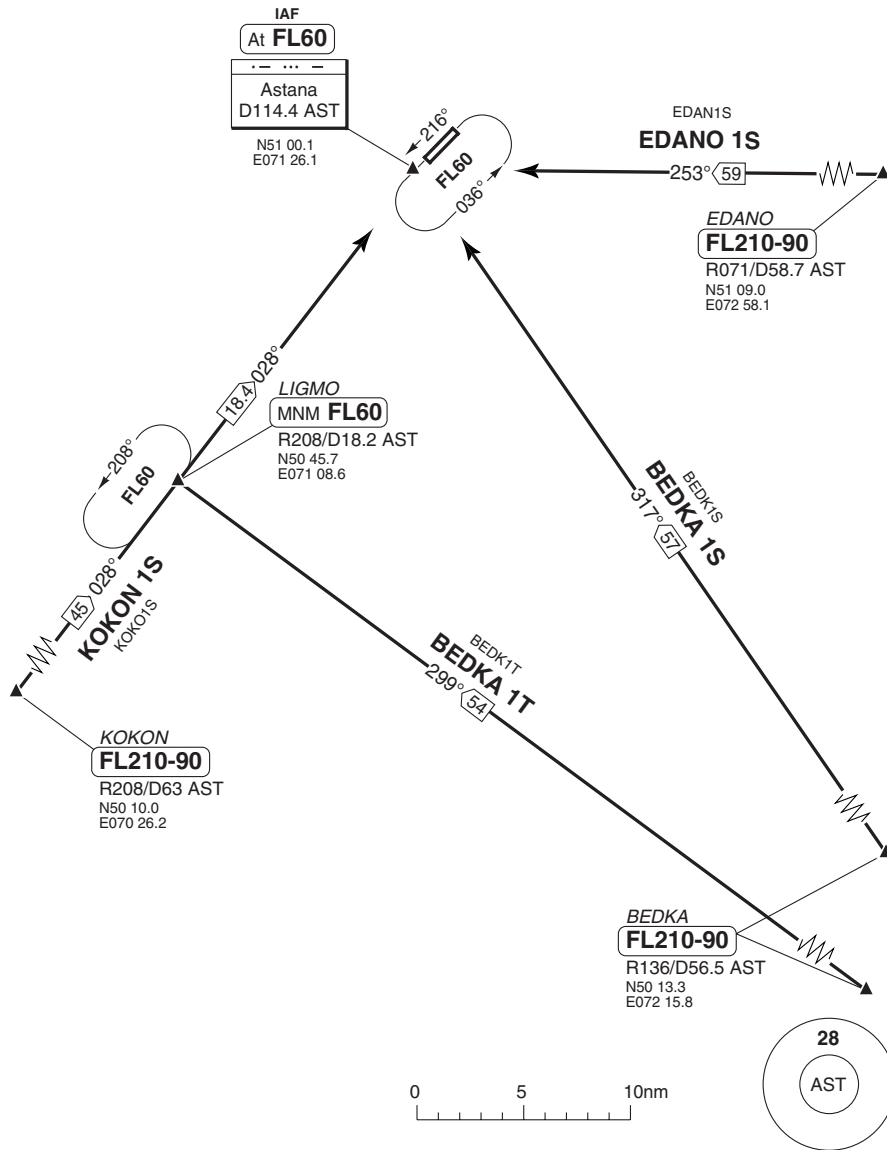
STAR RWY 04 from South, East

ASTANA

Astana APP 124.6	RAD 120.7	TWR 118.7	GND 119.6	ATIS 127.7
---------------------	--------------	--------------	--------------	---------------

TL 60 AD Elev 1165

40 - 2



© Navitech - uacc02aacc.org

Change: Conversion table, FL, TL

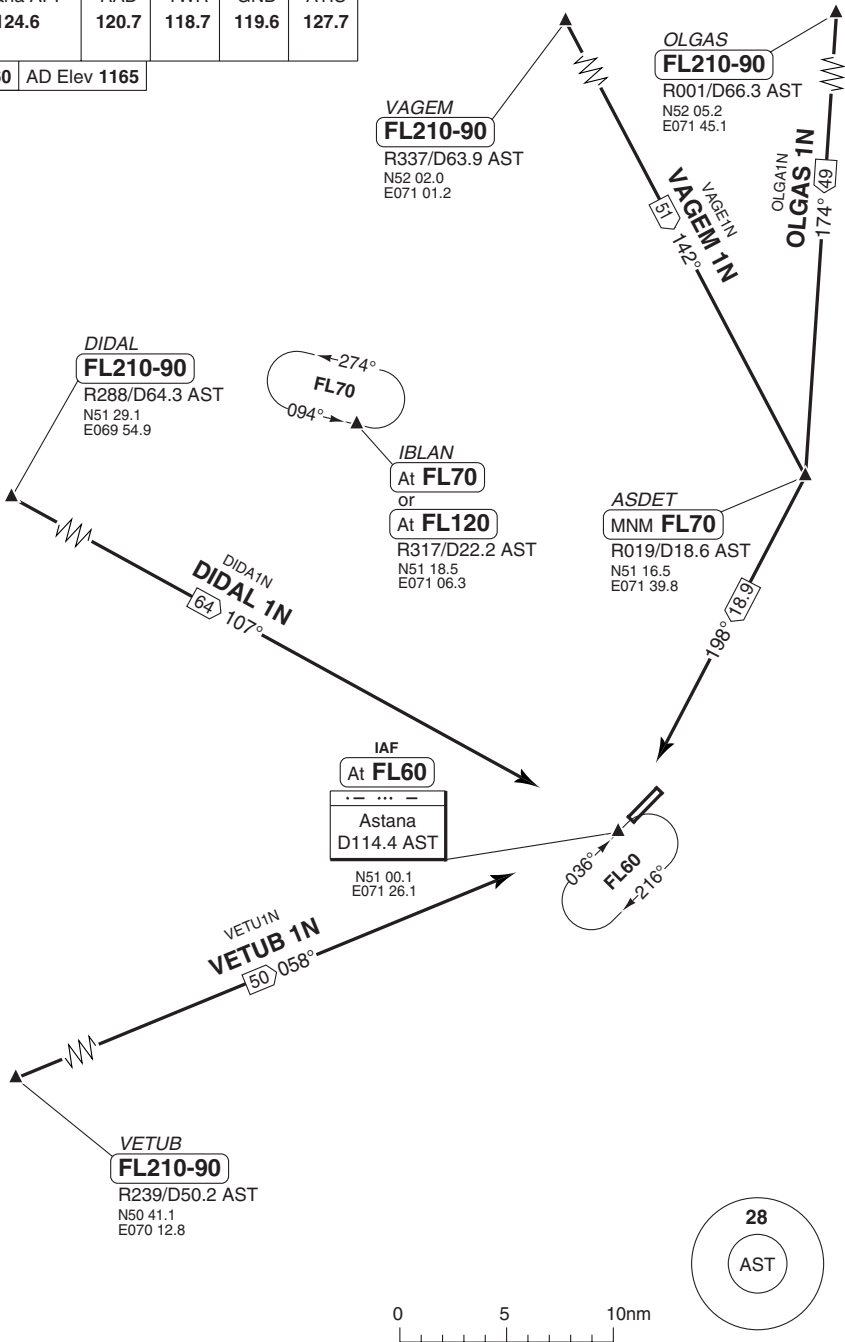
THIS CHART IS A PART OF NAVIGRAPH NDAC AND IS INTENDED FOR FLIGHT SIMULATION USE ONLY

STAR RWY 22 from North, West

ASTANA

Astana APP	RAD	TWR	GND	ATIS
124.6	120.7	118.7	119.6	127.7

TL 60 AD Elev 1165



40 - 3

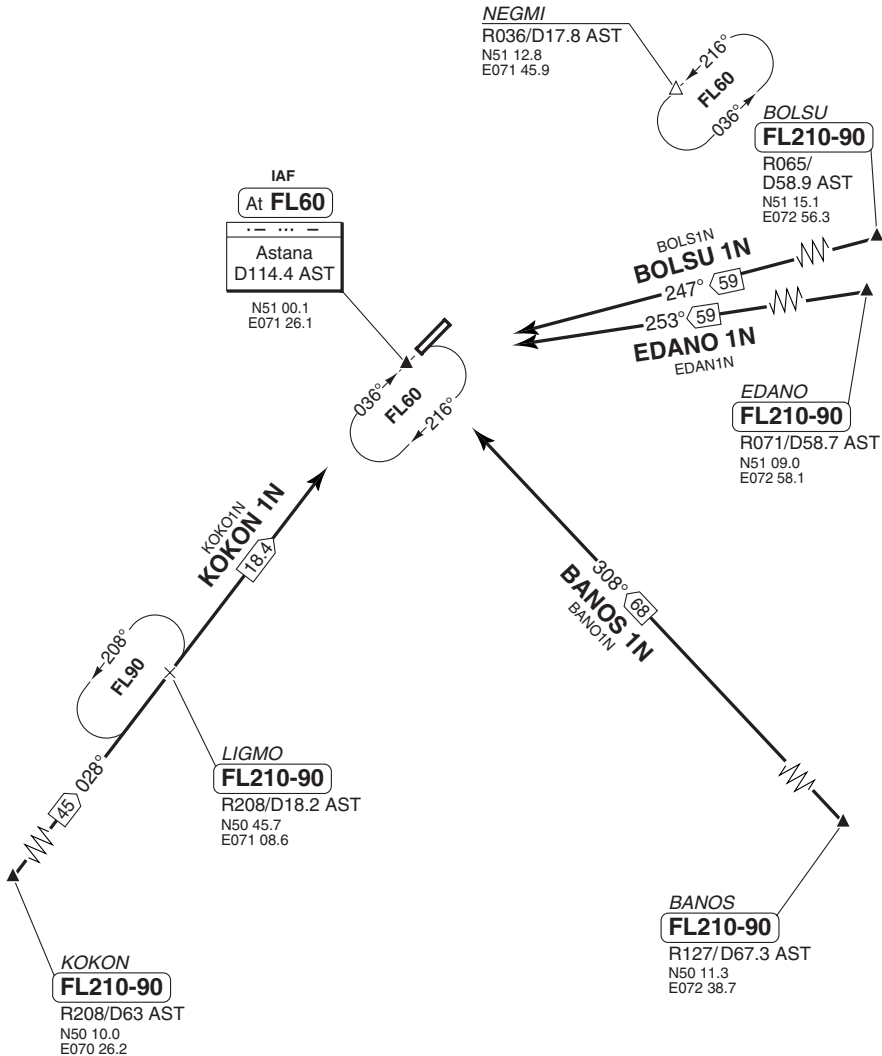
STAR RWY 22 from South, East

ASTANA

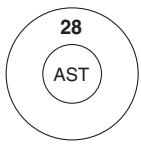
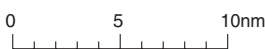
Astana APP 124.6	RAD 120.7	TWR 118.7	GND 119.6	ATIS 127.7
---------------------	--------------	--------------	--------------	---------------

TL 60 AD Elev 1165

40 - 4



© Navitech - uacc04aacorg



Change: Conversion table, FL, TL

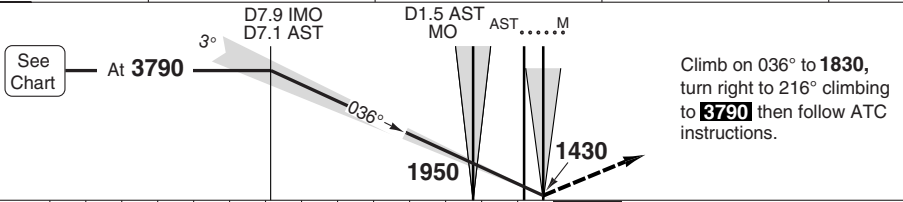
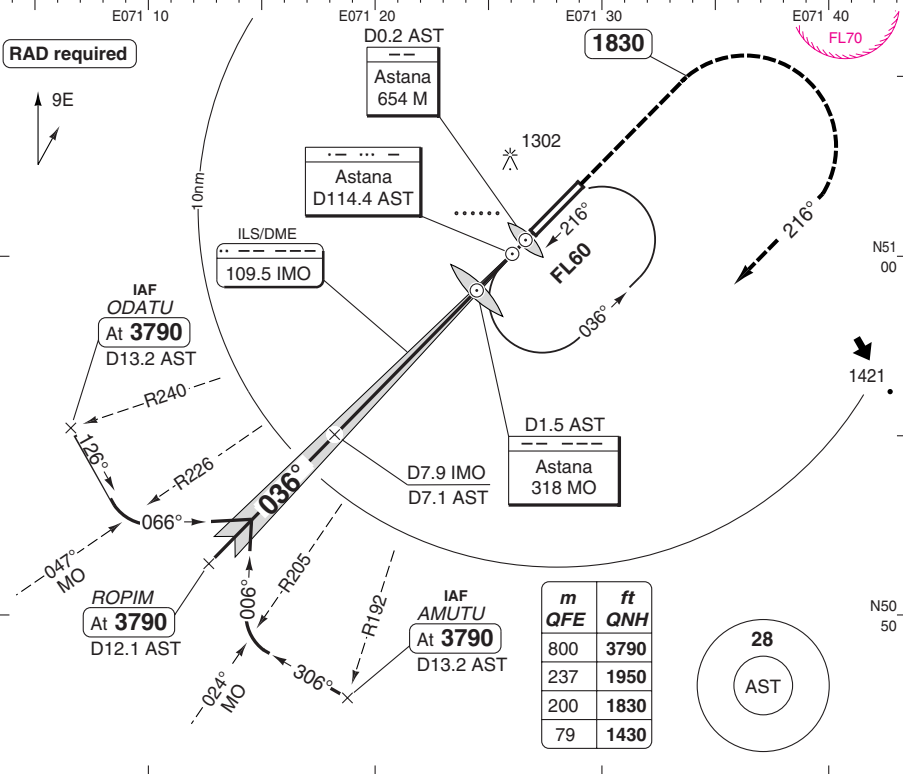
THIS CHART IS A PART OF NAVIGRAPH NDAC AND IS INTENDED FOR FLIGHT SIMULATION USE ONLY

ILS Y CAT II/III RWY 04

ASTANA

Astana APP 124.6	RAD 120.7	TWR 118.7	GND 119.6	ATIS 127.7
---------------------	--------------	--------------	--------------	---------------

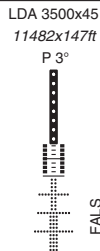
ILS/DME 109.5 IMO	FAT 036°	THR Elev 1165 42hPa	AD Elev 1165 42hPa	TL 60	TA 3790
-------------------	----------	---------------------	--------------------	-------	---------



nm	14	13	12	11	10	9	8	7	6	5	4	3	2	1	0	TCH 53
----	----	----	----	----	----	---	---	---	---	---	---	---	---	---	---	--------

ACFT	CAT IIIA	ACFT	CAT II	ILS
ALL	Available	A	RA115 350m	1370 (200) 550m
		B		
		C		
		D		

Note: Circling NA

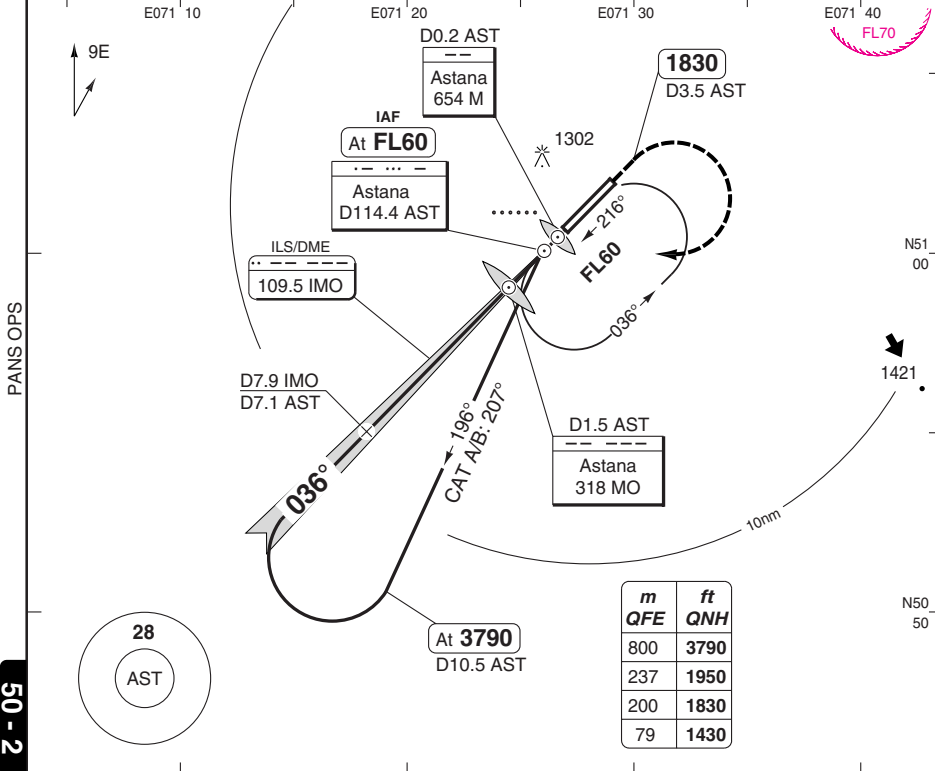


ILS Z CAT II/III RWY 04

ASTANA

Astana APP 124.6	RAD 120.7	TWR 118.7	GND 119.6	ATIS 127.7
---------------------	--------------	--------------	--------------	---------------

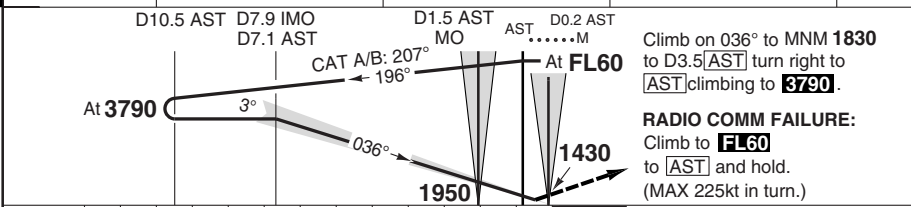
ILS/DME 109.5 IMO	FAT 036°	THR Elev 1165 42hPa	AD Elev 1165 42hPa	TL 60	TA 3790
-------------------	----------	---------------------	--------------------	-------	---------



PANS OPS

50 - 2

© Navtech - uacc02aip00
EU OPS



Climb on 036° to MNM 1830 to D3.5[AST] turn right to [AST] climbing to 3790.
RADIO COMM FAILURE:
Climb to **FL60** to [AST] and hold.
(MAX 225kt in turn.)

nm	13	12	11	10	9	8	7	6	5	4	3	2	1	0	TCH 53
----	----	----	----	----	---	---	---	---	---	---	---	---	---	---	--------

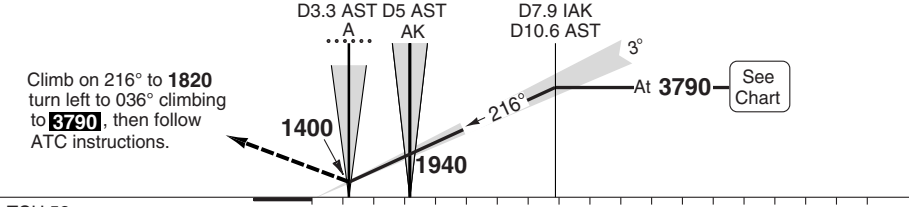
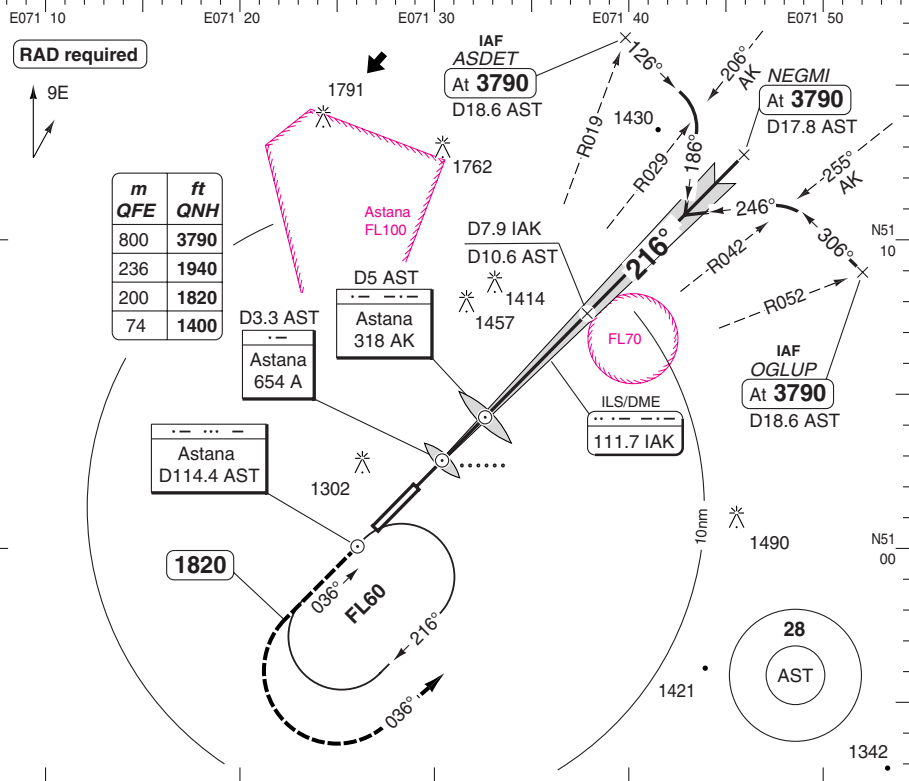
ACFT	CAT IIIA	ACFT	CAT II	ILS	Note: Circling NA	LDA 3500x45 11482x147ft P 3° FALS
ALL	Available	A				
		B	RA115 350m	1370 (200) 550m		
		C				

ILS Y CAT II/III RWY 22

ASTANA

Astana APP 124.6	RAD 120.7	TWR 118.7	GND 119.6	ATIS 127.7
---------------------	--------------	--------------	--------------	---------------

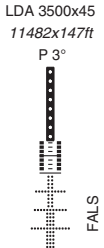
ILS/DME 111.7 IAK	FAT 216°	THR Elev 1158 42hPa	AD Elev 1165 42hPa	TL 60	TA 3790
-------------------	----------	---------------------	--------------------	-------	---------



TCH 52	0	1	2	3	4	5	6	7	8	9	10	11	12	13	14	15	16	17	18	nm
--------	---	---	---	---	---	---	---	---	---	---	----	----	----	----	----	----	----	----	----	----

ACFT	CAT IIIA	ACFT	CAT II	ILS
ALL	Available	A		
		B	RA 105	1360 (200)
		C	350m	550m
		D		

Note: Circling NA



© Navitech - uacc03iaip00
EU OPS

50 - 3

Change: Area, Conversion table, FL, TL

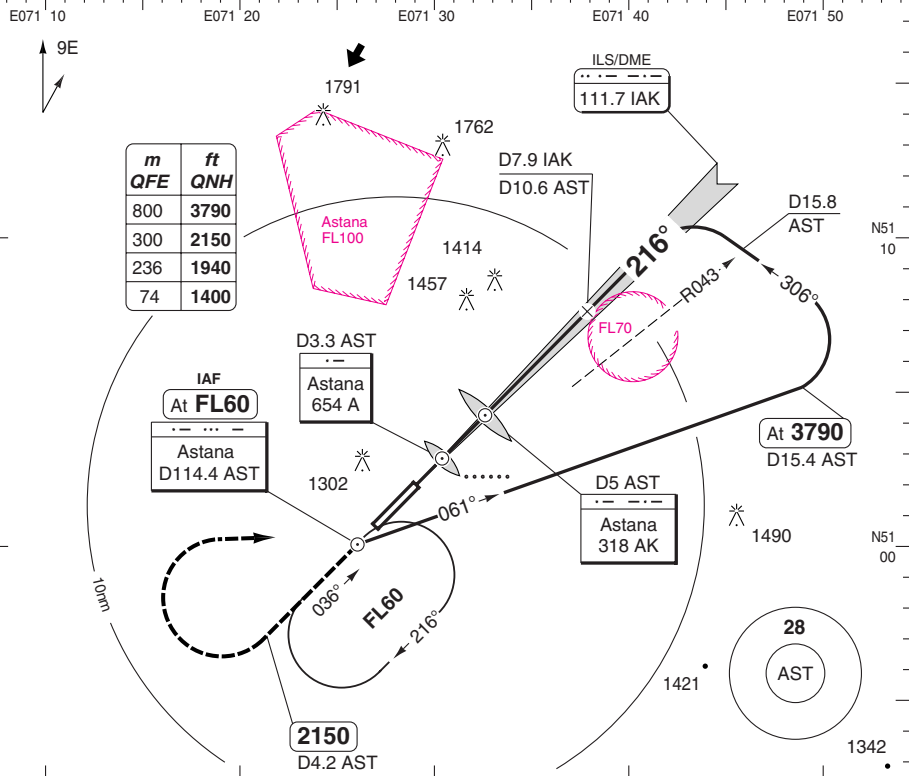
THIS CHART IS A PART OF NAVIGRAPH NDAC AND IS INTENDED FOR FLIGHT SIMULATION USE ONLY

ILS Z CAT II/III RWY 22

ASTANA

Astana APP 124.6	RAD 120.7	TWR 118.7	GND 119.6	ATIS 127.7
---------------------	--------------	--------------	--------------	---------------

ILS/DME 111.7 IAK	FAT 216°	THR Elev 1158 42hPa	AD Elev 1165 42hPa	TL 60	TA 3790
-------------------	----------	---------------------	--------------------	-------	---------



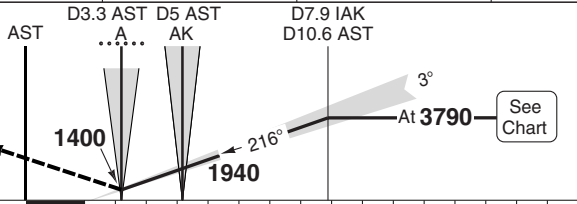
PANS OPS

50 - 4

Climb on 216° to MNM 2150 to D4.2 [AST] turn right to [AST] climbing to 3790.

RADIO COMM FAILURE:

Climb to **FL60** to [AST] and hold. (MAX 225kt in turn.)

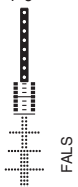


TCH 52

ACFT	CAT IIIA	ACFT	CAT II	ILS
		A		
		B	RA 105	1360 (200)
		C	350m	550m
		D		
ALL	Available			

Note: Circling NA

LDA 3500x45
11482x147ft
P 3°



© Navtech - uacc04iap00
EU OPS

Change: Area, Conversion table, FL, TL

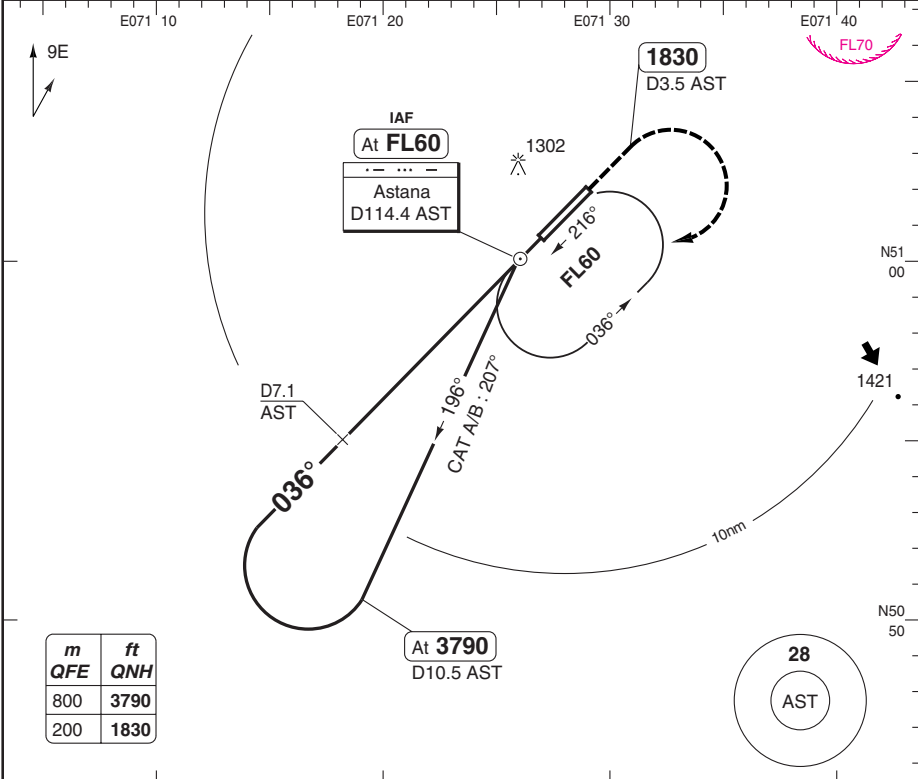
THIS CHART IS A PART OF NAVIGRAPH NDAC AND IS INTENDED FOR FLIGHT SIMULATION USE ONLY

VOR RWY 04

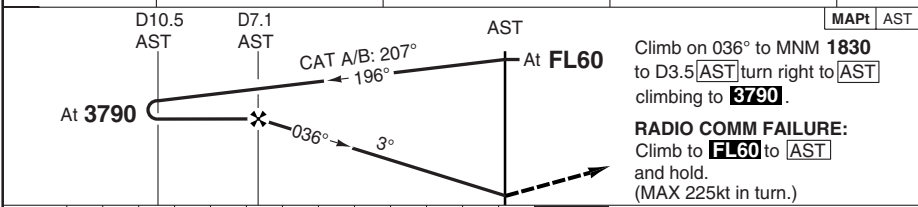
ASTANA

Astana APP 124.6	RAD 120.7	TWR 118.7	GND 119.6	ATIS 127.7
----------------------------	---------------------	---------------------	---------------------	----------------------

VOR/DME 114.4 AST	FAT 036°	THR Elev 1165 42hPa	AD Elev 1165 42hPa	TL 60	TA 1970
--------------------------	-----------------	----------------------------	---------------------------	--------------	----------------



m	ft
QFE	QNH
800	3790
200	1830



nm	13	12	11	10	9	8	7	6	5	4	3	2	1	0
ACFT	VOR+DME		Note: Circling NA											
A	1830 (657)													
B	3000m													
C	2150 (985)													
D	5000m													
GS	80	100	120	140	160									
ROD 3.1°	440	550	660	770	870									
DME AST	3.1° ALT	LDA 3500x45 11482x147ft P 3°												
7.1	3790													
6	3440													
5	3110													
4	2790													
3	2460													
2.1	2150													

© Navtech - uacc05iaip00

50 - 5

VOR RWY 22

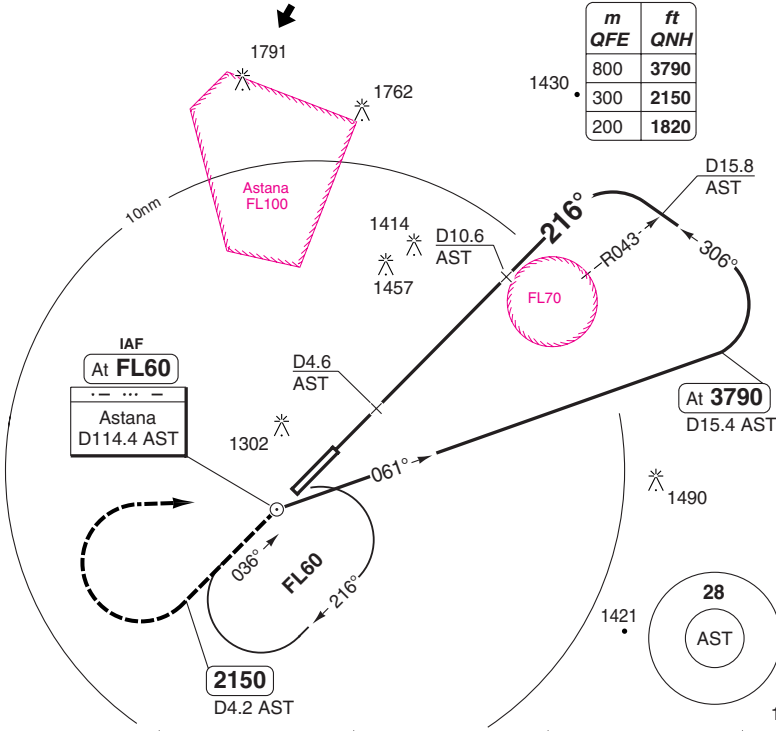
Astana APP 124.6	RAD 120.7	TWR 118.7	GND 119.6	ATIS 127.7
----------------------------	---------------------	---------------------	---------------------	----------------------

VOR/DME 114.4 AST	FAT 216°	THR Elev 1158 42hPa	AD Elev 1165 42hPa	TL 60	TA 3790
--------------------------	-----------------	----------------------------	---------------------------	--------------	----------------

E071 10 E071 20 E071 30 E071 40 E071 50

PANS OPS

50 - 6

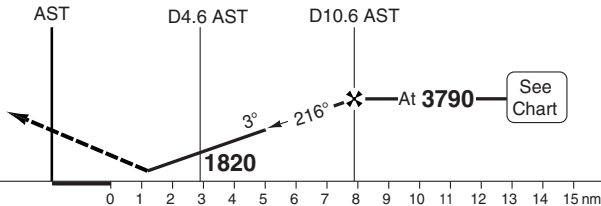


m	ft
QFE	QNH
800	3790
300	2150
200	1820

MAPt D3.2 AST

Climb on 216° to MNM 2150, to D4.2 [AST] turn right to [AST] climbing to 3790.

RADIO COMM FAILURE:
Climb to **FL60** to [AST] and hold.
(MAX 225kt in turn.)



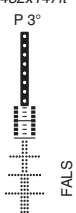
ACFT **VOR+DME**

Note: Circling NA

A	1820 (657)
B	3000m
C	2150 (985)
D	5000m

DME	3.1°	LDA 3500x45
AST	ALT	11482x147ft
10.6	3790	P 3°
10	3600	
9	3270	
8	2940	
7	2620	
6	2290	
5.6	2150	

LDA 3500x45
11482x147ft



GS	80	100	120	140	160
ROD 3.1°	440	550	660	770	880

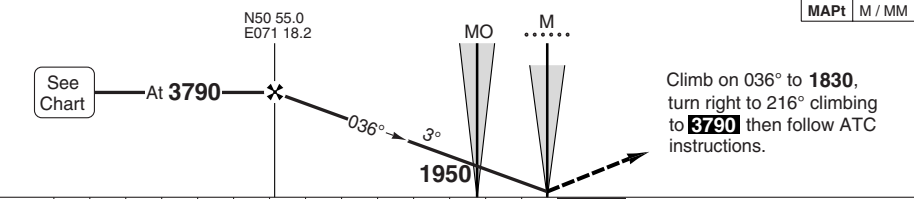
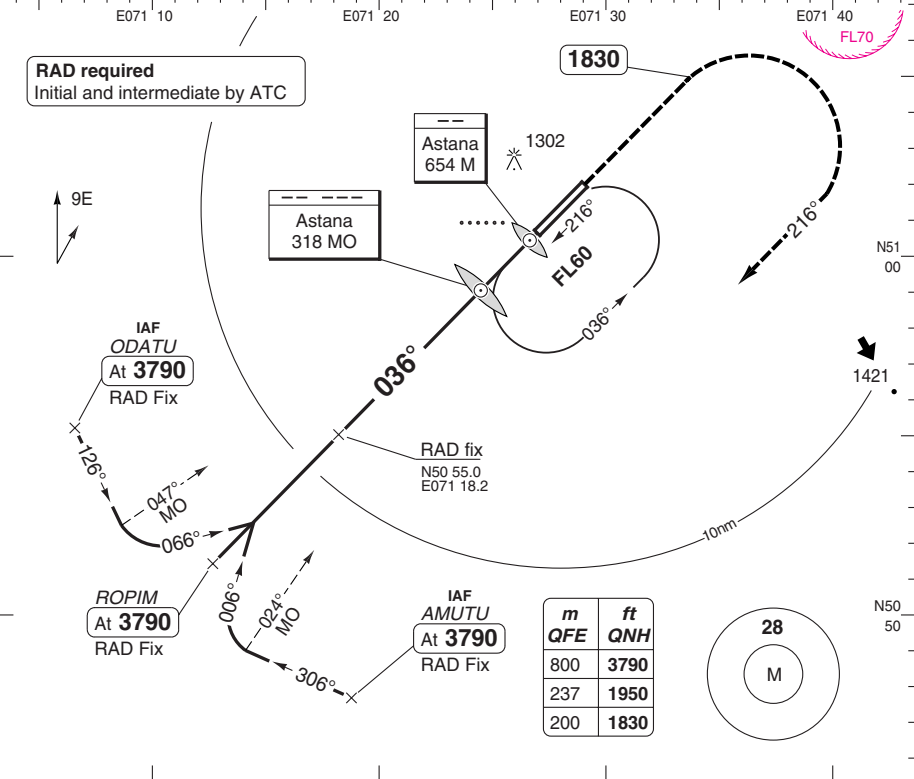
Change: Area, Conversion table, FL, TL

NDB RWY 04

ASTANA

Astana APP 124.6	RAD 120.7	TWR 118.7	GND 119.6	ATIS 127.7
----------------------------	---------------------	---------------------	---------------------	----------------------

NDB 654 M / 318 MO	FAT 036°	THR Elev 1165 42hPa	AD Elev 1165 42hPa	TL 60	TA 3790
---------------------------	-----------------	----------------------------	---------------------------	--------------	----------------



nm	14	13	12	11	10	9	8	7	6	5	4	3	2	1	0
ACFT	2NDB		NDB (M)		Note: Circling NA										
A	1520 (350) 1400m		1590 (420) 1400m		GS	80	100	120	140	160	LDA 3500x45 11482x147ft P 3°				
B	1520 (350) 1500m		1590 (420) 1500m		ROD 3.1°	440	550	660	770	870					
C	1520 (350) 1500m		1590 (420) 1500m		FAF +20s	3650	3610	3580	3540	3500					
D	1520 (350) 1500m		1590 (420) 1500m		+40s	3500	3430	3360	3290	3210					
	1520 (350) 1500m		1590 (420) 1500m		+60s	3360	3250	3140	3030	2920					
	1520 (350) 1500m		1590 (420) 1500m		FAF- 1590	5:04	4:02	3:22	2:53	2:32					
	1520 (350) 1500m		1590 (420) 1500m		FAF- 1520	5:13	4:10	3:29	2:59	2:37					

© Navtech - uacc07iaip00

Change: Area, Conversion table, FL, TL

THIS CHART IS A PART OF NAVIGRAPH NDAC AND IS INTENDED FOR FLIGHT SIMULATION USE ONLY

NDB RWY 22

ASTANA

Astana APP 124.6	RAD 120.7	TWR 118.7	GND 119.6	ATIS 127.7
NDB 654 A / 318 AK		FAT 216°	THR Elev 1158 42hPa	AD Elev 1165 42hPa
E071 10		E071 20	E071 30	E071 40
		E071 50		

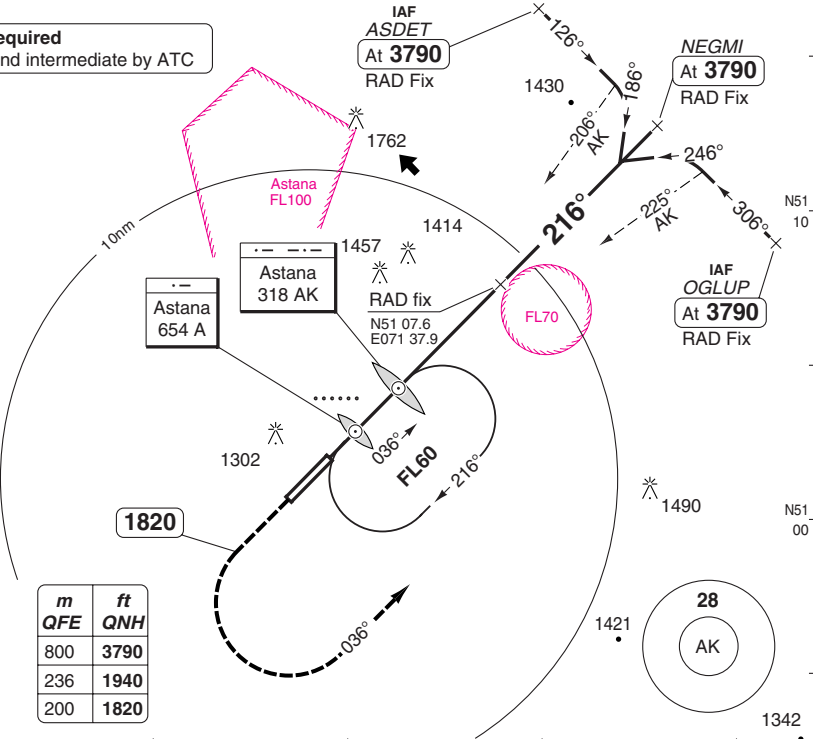
E071 10		E071 20	E071 30	E071 40	E071 50
---------	--	---------	---------	---------	---------

RAD required
Initial and intermediate by ATC



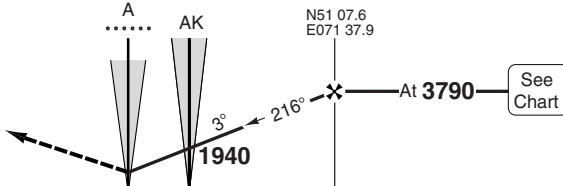
PANS OPS

50 - 8



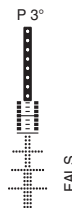
MAPt A / MM

Climb on 216° to **1820**
turn left to 036° climbing
to **3790** then follow ATC
instructions.
(MAX 225kt in turn.)



ACFT	2NDB	Note: Circling NA
A		
B	1510 (350)	
C	1500m	
D		

GS	80	100	120	140	160	LDA 3500x45
ROD 3.1°	440	550	660	770	880	11482x147ft
FAF +20s	3650	3610	3580	3540	3500	P 3°
+40s	3500	3430	3360	3290	3210	
+60s	3360	3250	3140	3030	2920	
FAF- 1510	5:14	4:11	3:29	2:59	2:37	



Change: Area, Conversion table, FL, TL

THIS CHART IS A PART OF NAVIGRAPH NDAC AND IS INTENDED FOR FLIGHT SIMULATION USE ONLY

JAR-OPS Landing Minima

ASTANA

The following Minima is for Public Transport aircraft and conforms to JAR-OPS1 regulations.

STRAIGHT-IN APPROACH		C				D			
R/W	Procedure	DA/ MDA QNH ft	DH/ MDH QFE ft	VIS m	VIS No ALS m	DA/ MDA QNH ft	DH/ MDH QFE ft	VIS m	VIS No ALS m
04	ILS/DME Y, Z (1)(2)	1370	200	550	1000	1370	200	550	1000
04	VOR/DME	1590	420	1500	1800	1590	420	1500	2000
04	2 NDB	1470	300	1500	1800	1470	300	1500	2000
04	2 NDB (without SDF)	1590	420	1500	1800	1590	420	1500	2000
22	ILS/DME Y, Z (1)(2)	1360	200	550	1000	1360	200	550	1000
22	VOR/DME	1470	310	1500	1800	1470	310	1500	2000
22	VOR/DME (without SDF)	1570	420	1500	1800	1570	420	1500	2000
22	2 NDB	1490	330	1500	1800	1490	330	1500	2000

Notes:

(1) Values shown are RVR.

(2) With or without autopilot.

CIRCLING		C			D		
R/W	Procedure	MDA QNH ft	MDH QFE ft	Vis m	MDA QNH ft	MDH QFE ft	Vis m
Not authorised							

Notes:

TAKE-OFF		C		D	
Runway	Facilities	RVR	Vis	RVR	Vis
04/22	RCLL	200	-	200	-
04/22	REDL (HJ)	300	-	300	-
04/22	REDL (HN)	400	-	400	-
04/22	Nil (Day only)	500	-	500	-

Notes:

JAR-OPS Landing Minima

ASTANA

The following Minima is for Public Transport aircraft and conforms to JAR-OPS1 regulations.

STRAIGHT-IN APPROACH		A				B			
R/W	Procedure	DA/ MDA QNH ft	DH/ MDH QFE ft	VIS m	VIS No ALS m	DA/ MDA QNH ft	DH/ MDH QFE ft	VIS m	VIS No ALS m
04	ILS/DME Y, Z (1)(2)	1370	200	550	1000	1370	200	550	1000
04	VOR/DME	1590	420	1400	1500	1590	420	1500	1500
04	2 NDB	1470	300	1400	1500	1470	300	1500	1500
04	2 NDB (without SDF)	1590	420	1400	1500	1590	420	1500	1500
22	ILS/DME Y, Z (1)(2)	1360	200	550	1000	1360	200	550	1000
22	VOR/DME	1470	310	1500	1500	1470	310	1500	1500
22	VOR/DME (without SDF)	1570	420	1500	1500	1570	420	1500	1500
22	2 NDB	1490	330	1500	1500	1490	330	1500	1500

Notes:

- (1) Values shown are RVR.
- (2) With or without autopilot.

CIRCLING		A			B		
R/W	Procedure	MDA QNH ft	MDH QFE ft	Vis m	MDA QNH ft	MDH QFE ft	Vis m

Not authorised

Notes:

TAKE-OFF		A		B	
Runway	Facilities	RVR	Vis	RVR	Vis
04/22	RCLL	200	-	200	-
04/22	REDL (HJ)	300	-	300	-
04/22	REDL (HN)	300	-	300	-
04/22	Nil (Day only)	300	-	300	-

Notes:

JAR-OPS Landing Minima

ASTANA

The following Minima is for Public Transport aircraft and conforms to JAR-OPS1 regulations.

CAT II

Special aircrew and aircraft certification required.

Runways	C				D			
	DA	DH	RA	RVR	DA	DH	RA	RVR
	QNH ft	QFE ft	ft	m	QNH ft	QFE ft	ft	m
04 Y, Z	1265	100	107	350	1265	100	107	350
22 Y, Z	1257	100	105	350	1257	100	105	350

Notes:

Runways	A				B			
	DA	DH	RA	RVR	DA	DH	RA	RVR
	QNH ft	QFE ft	ft	m	QNH ft	QFE ft	ft	m
04 Y, Z	1265	100	107	350	1265	100	107	350
22 Y, Z	1257	100	105	350	1257	100	105	350

Notes: