

Airport information:

Country: Saint Lucia

City: ST LUCIA

Coordinates: N 13° 44.0', W 060° 57.2'

Elevation: 11

Customs: Customs : 10-03

Fuel: Jet A1

RFF: CAT 9

hours: AD administration: MON-FRI 1200-2000, ATC: 1000-0300

Runways:

Runway 10

Takeoff length: 2709, Landing length: 2709

Runway 28

Takeoff length: 2744, Landing length: 2594

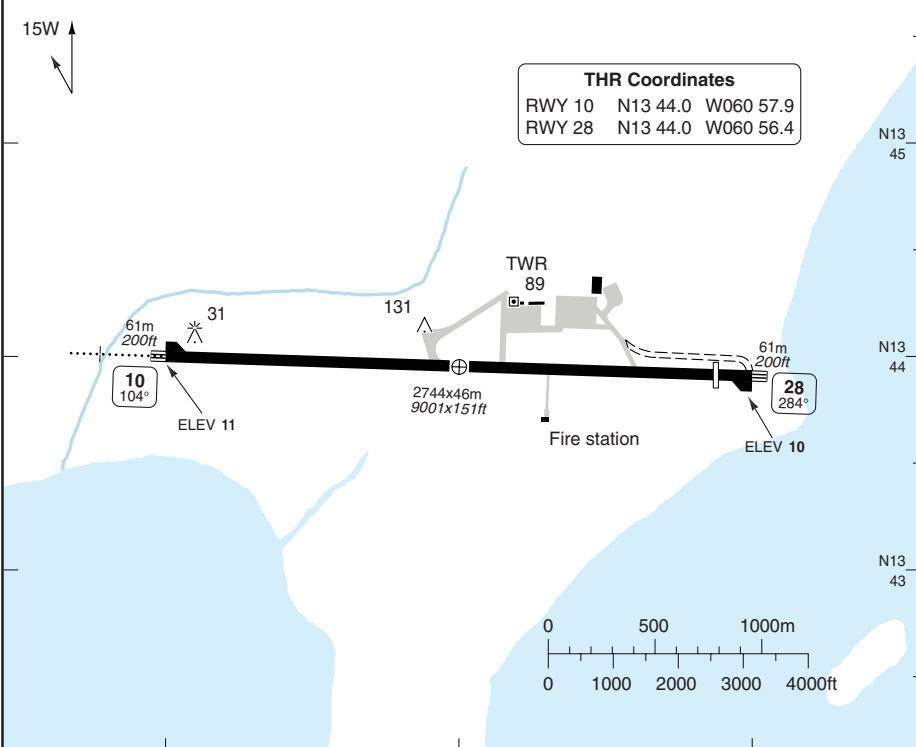
AERODROME

Hewanorra INTL ST LUCIA/VIEUX FORT

10 - 1

Hewanorra GND 121.6	TWR 118.3
-------------------------------	---------------------

AD Elev 14	ARP: N13 43.9 W060 57.1	RFF: CAT 9	AD HR: 10-03
-------------------	-------------------------	-------------------	--------------



RWY	Slope	TORA m/ft	LDA m/ft	ALS	REDL	Additional
10	0	2709 / 8888	2709 / 8888	L-E ①	avbl ②	P 3°
28	0	2744 / 9001	2594 / 8511	-	avbl ②	P 3°

① 430m. ② White.

EU OPS TAKE OFF MINIMA

RWY	Facilities	RVR			
		A	B	C	D
10/28	RCL (day only) or RCL + REDL	400m			
	NIL (day only)	500m			

© Navitech - tlp01laorg0

Change: AD name.

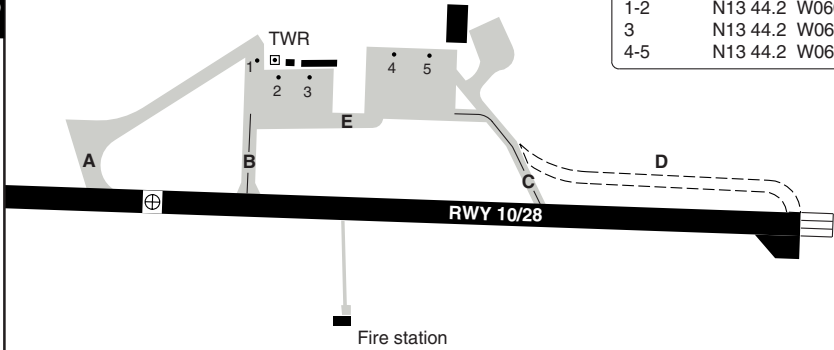
AERODROME

Hewanorra INTL ST LUCIA/VIEUX FORT

10 - 2

Hewanorra GND 121.6	TWR 118.3
------------------------	--------------

Parking position coordinates	
1-2	N13 44.2 W060 57.1
3	N13 44.2 W060 57.0
4-5	N13 44.2 W060 56.9



GENERAL INFORMATION

1. WARNING

- 1.1 Birds in vicinity of AD.
- 1.2 High terrain north and south of RWY.
- 1.3 When APCH from SW, do not descend below 5200ft until 15nm from BNE VOR/NDB.

2. SPEED

MAX 250kt or MNM safe speed if greater below 10000ft.

3. TRAFFIC NOTE

- 3.1 Right hand circuit RWY 10.
- 3.2 RWY 10 visual maneouvering conducted over sea south of extended RCL.
- 3.3 Windshear and turbulence may exist on APCH RWY 10 when winds from NE exceed 14kt.

4. TWY RESTRICTION

TWY A only avbl for daylight operations.
 TWY A width 16m/ 52ft.
 TWY E width 22m/ 72ft.

5. NOTE

- 5.1 Heavy and medium jet ACFT to push back from terminal prior to start up.
- 5.2 No engine shall be started until all passengers have boarded the ACFT.
- 5.3 All engines must be shut down prior to the deplaning of any passenger.

6. DEPARTURE PROCEDURE

RWY 10
 Right turn after DEPARTURE:
 Climb on 104° to 2000ft before right turn.
 Left turn after DEPARTURE:
 Climb on 104° to 4200ft before left turn.

Additional Landing Minima

1 ST LUCIA/VIEUX FORT

1 Hewanorra INTL

VOR RWY 10 (Non CDFA)

ACFT	VOR	Circling 1	1 South of AD
STATE	A	790 (776) 3.6km	1130 (1116) 3.6km
	B		
	C	790 (776) 3.8km	1230 (1216) 4.8km
	D	790 (776) 4.0km	

VOR RWY 28 (Non CDFA)

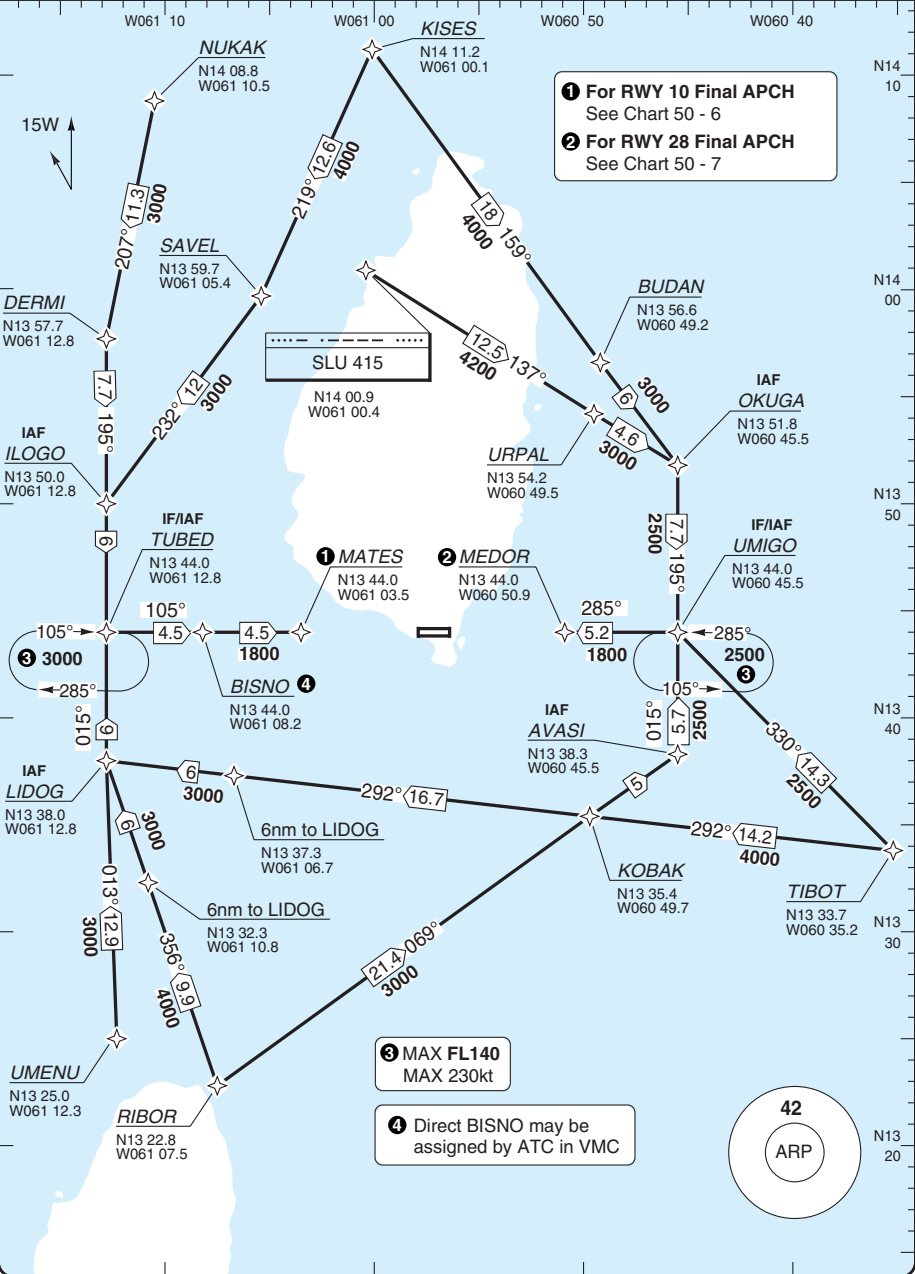
ACFT	VOR	Circling 1	1 South of AD
STATE	A	770 (756) 3.7km	1130 (1116) 3.7km
	B		
	C	770 (756) 3.9km	1230 (1216) 4.8km
	D	770 (756) 4.0km	

INITIAL APCH **RNAV**

Hewanorra INTL ST LUCIA/VEUX FORT

Saint Lucia APP 119.8	Hewanorra TWR 118.3	GND 121.6
---------------------------------	-------------------------------	---------------------

AD Elev 14 TL ATC TA 9000



50 - 1

Change: AD name.

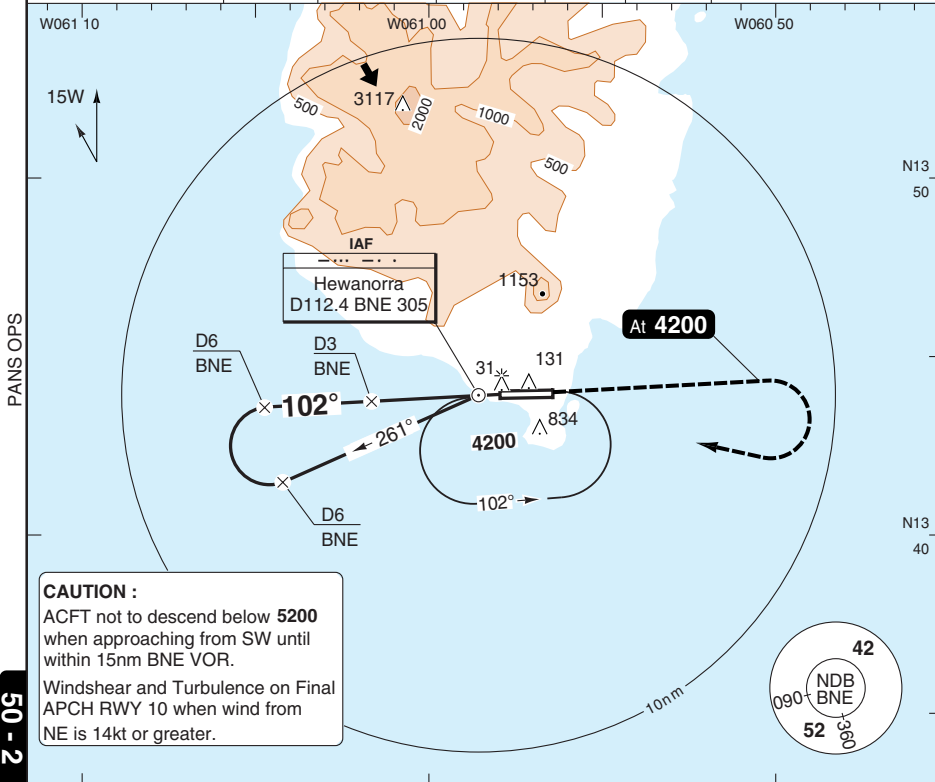
THIS CHART IS A PART OF NAVIGRAPH NDAC AND IS INTENDED FOR FLIGHT SIMULATION USE ONLY

VOR RWY 10

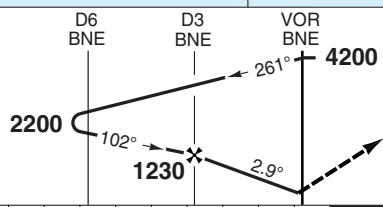
Hewanorra INTL ST LUCIA/VIEUX FORT

Saint Lucia APP 119.8	Hewanorra TWR 118.3	GND 121.6
---------------------------------	-------------------------------	---------------------

VOR/DME 112.4 BNE	FAT 102°	THR Elev 11	AD Elev 14	TL ATC	TA 9000
--------------------------	-----------------	--------------------	-------------------	---------------	----------------



50 - 2



Climb on R102 **BNE** to **4200**, turn right to **BNE** and hold.

nm	12	11	10	9	8	7	6	5	4	3	2	1	0
----	----	----	----	---	---	---	---	---	---	---	---	---	---

ACFT	VOR+DME	VOR	Circling a	Circling a b
A	730 (716) 1.5km	790 (776) 3.4km	1130 (1116) 2.0km	1130 (1116) 3.4km
B	730 (716) 2.0km	790 (776) 3.6km	1130 (1116) 2.4km	1230 (1216) 4.8km
C	730 (716) 3.6km	790 (776) 4.0km	1230 (1216) 4.8km	
D	730 (716) 4.0km	790 (776) 4.0km		

a South of AD.
b After VOR proc.
Note: See 51-1 for non CDFA minima.

DME BNE	2.9° ALT
6	2190
5	1880
4	1570
3	1250
2	940
1.3	730

LDA 2709x46 888x151ft
P 3°

GS	80	100	120	140	160
ROD 2.9°	420	530	630	740	840

430

© Navtech - tlp02lap00

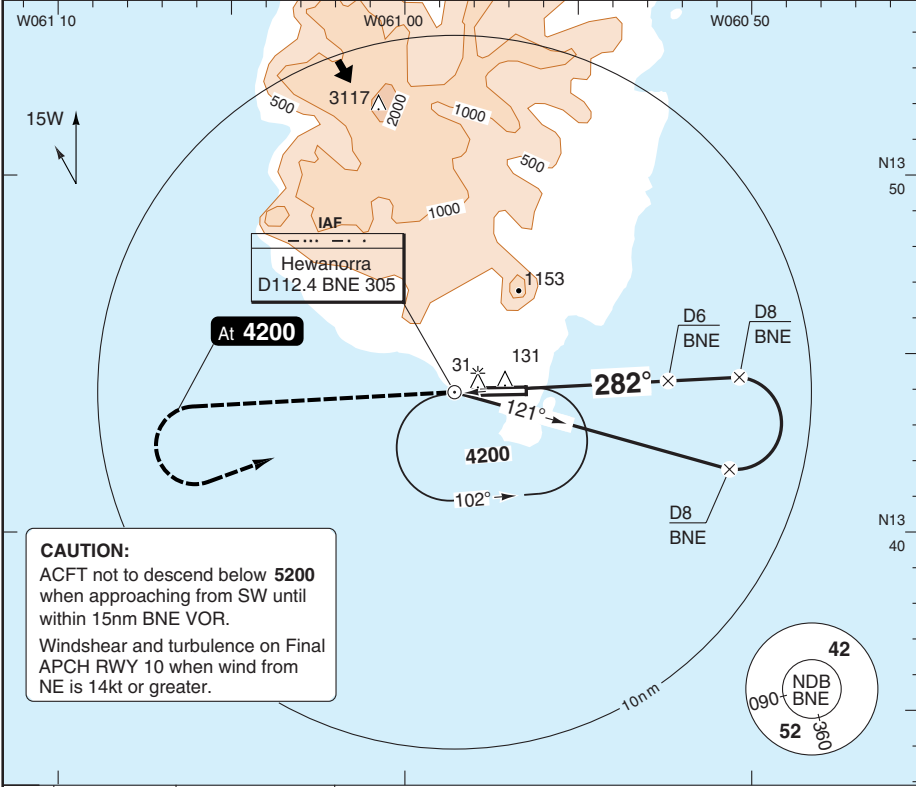
IALS

VOR RWY 28

Hewanorra INTL ST LUCIA/VIEUX FORT

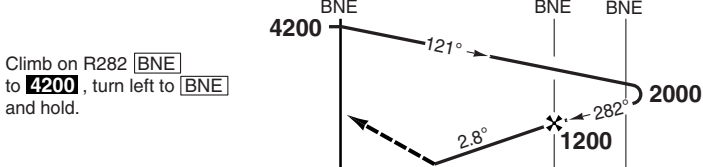
Saint Lucia APP 119.8	Hewanorra TWR 118.3	GND 121.6
---------------------------------	-------------------------------	---------------------

VOR/DME 112.4 BNE	FAT 282°	DTHR Elev 10	AD Elev 14	TL ATC	TA 9000
--------------------------	-----------------	---------------------	-------------------	---------------	----------------



CAUTION:
 ACFT not to descend below **5200** when approaching from SW until within 15nm BNE VOR.
 Windshear and turbulence on Final APCH RWY 10 when wind from NE is 14kt or greater.

MAP: VOR: VOR BNE VOR/DME: D2.2 BNE



Climb on R282 **BNE** to **4200**, turn left to **BNE** and hold.

ACFT	VOR+DME	VOR	Circling a	Circling a b	a South of AD.	DME BNE	2.8° ALT	LDA 2594x46 8511x151ft
A	770 (756) 1.5km		1130 (1116) 2.0km	1130 (1116) 3.5km	Note: See 51-1 for non CDFA minima.	6	1200	P 3°
B	770 (756) 2.0km	770 (756) 3.5km	1130 (1116) 2.4km	1130 (1116) 3.5km		5	900	
C	770 (756) 3.6km		1230 (1216) 4.8km	1230 (1216) 4.8km		4.6	770	
D	770 (756) 4.0km	770 (756) 4.0km	1230 (1216) 4.8km	1230 (1216) 4.8km				

GS	80	100	120	140	160
ROD 2.8°	410	510	610	710	810



NALS

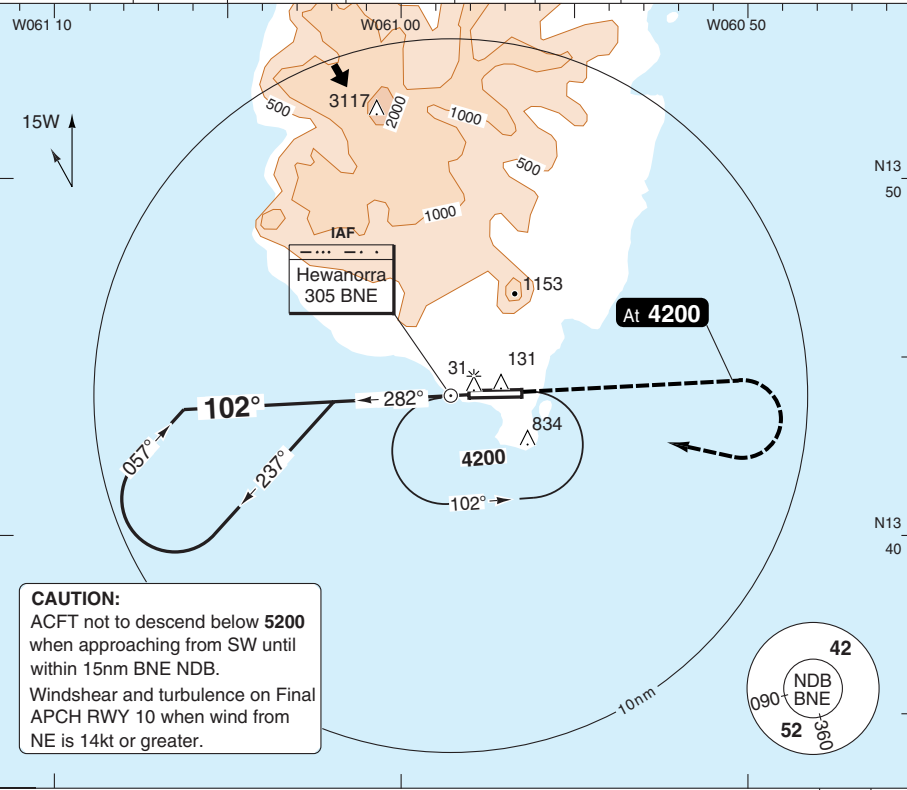
50 - 3

NDB RWY 10

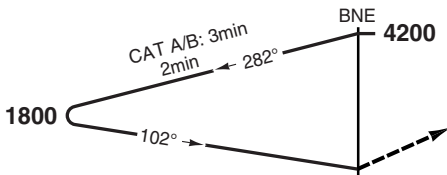
Hewanorra INTL ST LUCIA/VIEUX FORT

Saint Lucia APP 119.8	Hewanorra TWR 118.3	GND 121.6
---------------------------------	-------------------------------	---------------------

NDB 305 BNE	FAT 102°	THR Elev 11	AD Elev 14	TL ATC	TA 9000
--------------------	-----------------	--------------------	-------------------	---------------	----------------



PANS OPS 50 - 4



Climb on 102° from **BNE** to **4200**, turn right to **BNE** and hold.

nm	12	11	10	9	8	7	6	5	4	3	2	1	0
ACFT													
A													
B													
C													
D													

a South of AD.
b Non CDFA.

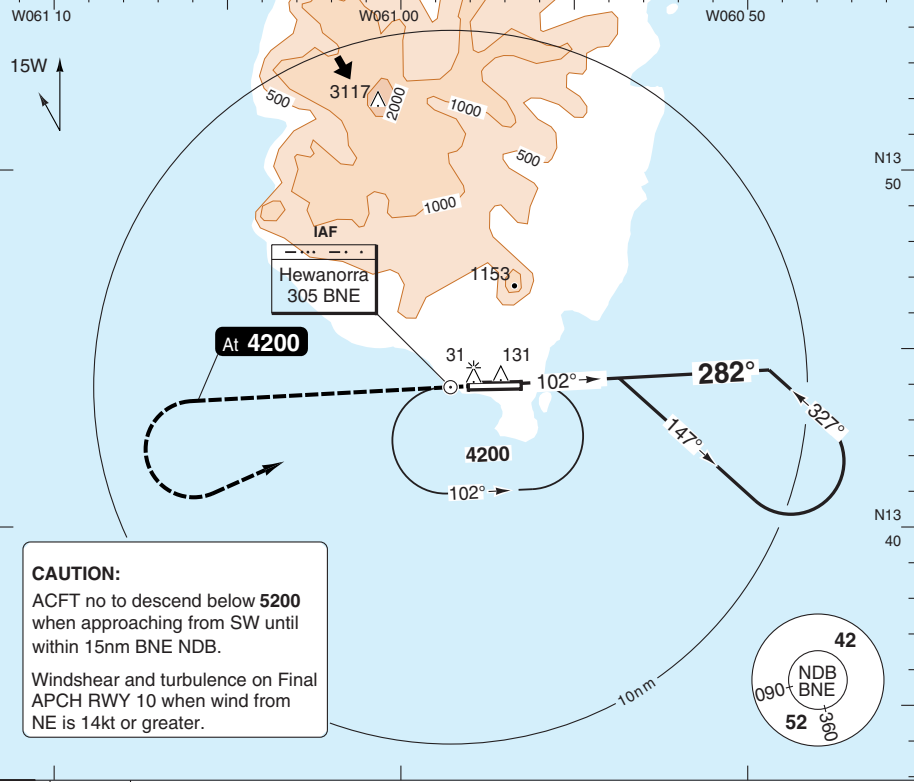
LDA 2709x46
888x151ft
P 3°

NDB RWY 28

Hewanorra INTL ST LUCIA/VIEUX FORT

Saint Lucia APP 119.8	Hewanorra TWR 118.3	GND 121.6
---------------------------------	-------------------------------	---------------------

NDB 305 BNE	FAT 282°	DTHR Elev 10	AD Elev 14	TL ATC	TA 9000
--------------------	-----------------	---------------------	-------------------	---------------	----------------

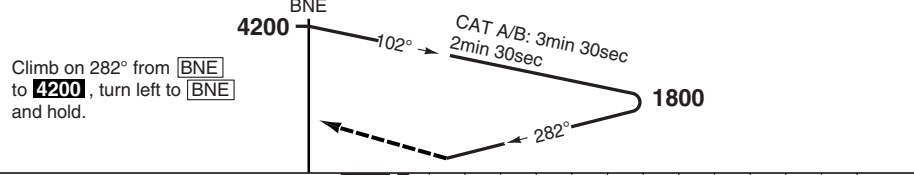


CAUTION:
 ACFT no to descend below **5200** when approaching from SW until within 15nm BNE NDB.
 Windshear and turbulence on Final APCH RWY 10 when wind from NE is 14kt or greater.



50 - 5

MAPt NDB BNE



Climb on 282° from **4200** to **1800**, turn left to **102°** and hold.

ACFT	NDB	NDB b	Circling a	Circling a b
A	890 (876) 4.0km	890 (876) 4.2km	1130 (1116) 4.0km	1130 (1116) 4.2km
B		890 (876) 4.2km		
C	890 (876) 4.4km	890 (876) 4.4km	1230 (1216) 4.8km	1230 (1216) 4.8km
D	890 (876) 4.8km	890 (876) 4.8km		

a South of AD.
b Non CDFA.

LDA 2594x46
 8510x150ft
 P 3°



NALS

Change: AD name, Note, minima.

THIS CHART IS A PART OF NAVIGRAPH NDAC AND IS INTENDED FOR FLIGHT SIMULATION USE ONLY

RNAV (GNSS) RWY 10 Hewanorra INTL ST LUCIA/VIEUX FORT

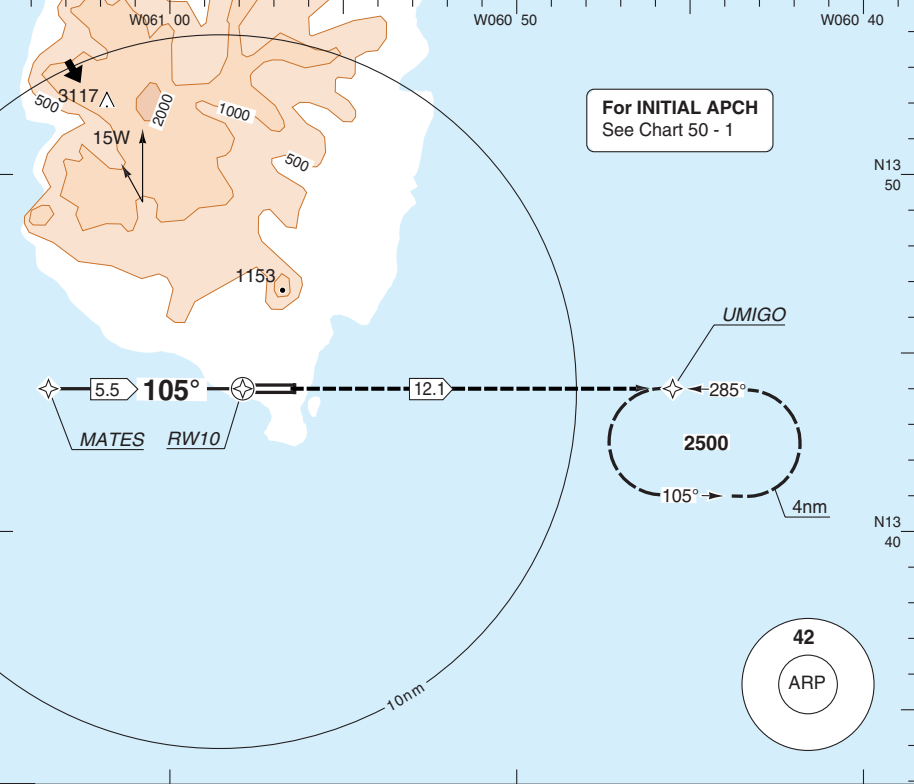
Saint Lucia APP 119.8	Hewanorra TWR 118.3	GND 121.6
---------------------------------	-------------------------------	---------------------

RNAV	FAT 105°	THR Elev 11	AD Elev 14	TL ATC	TA 9000
------	----------	-------------	------------	--------	---------

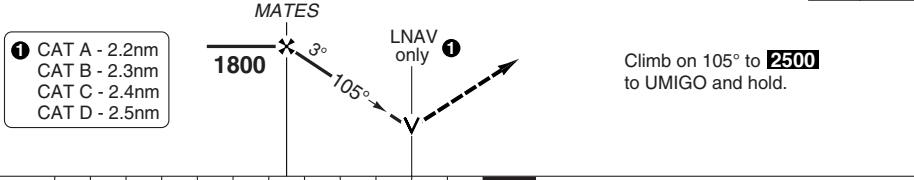
For INITIAL APCH
See Chart 50 - 1

PANS OPS

50 - 6

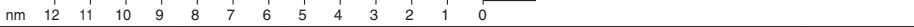


MAPt RWY10



- ① CAT A - 2.2nm
- CAT B - 2.3nm
- CAT C - 2.4nm
- CAT D - 2.5nm

Climb on 105° to **2500**
to UMIGO and hold.

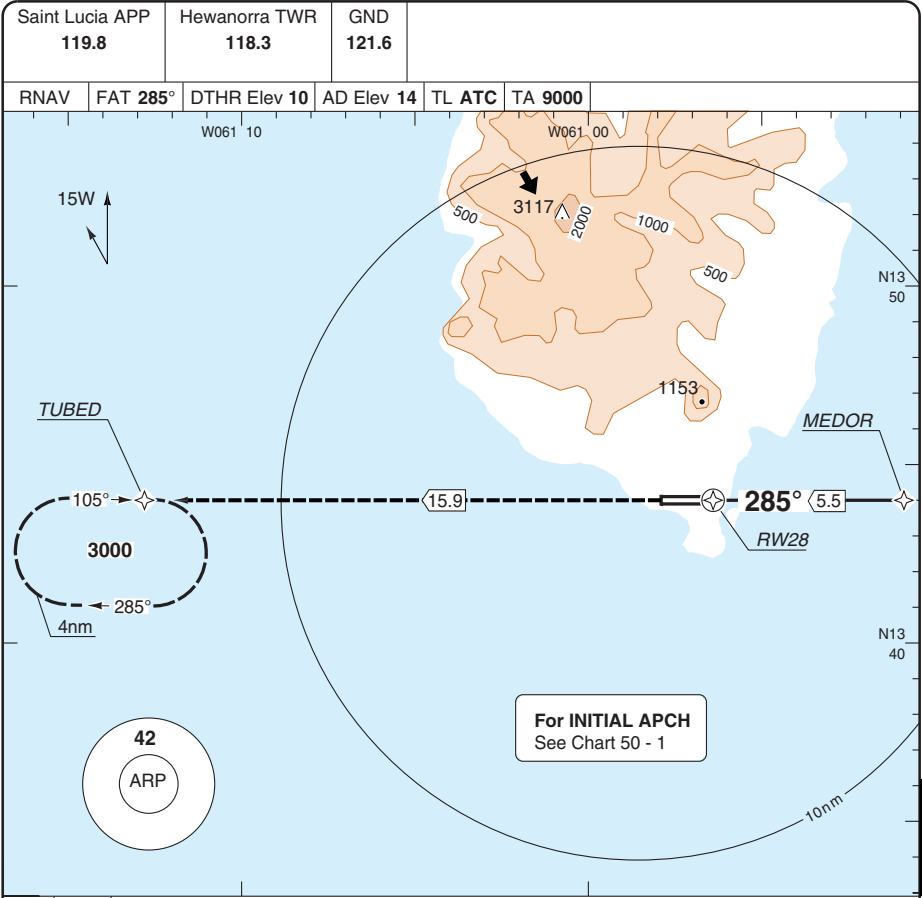


ACFT	LNAV/VNAV	LNAV	Circling ^a	^a South of AD.	LDA 2709x46 888x151ft P 3° IALS 430
A	690 (676) 1500m	770 (756) 1500m	1130 (1116) 1.5km		
B		800 (786) 1500m	1130 (1116) 1.6km		
C	690 (676) 2400m	820 (806) 2400m	1230 (1216) 2.4km		
D		850 (836) 2400m	1230 (1216) 3.6km		

© Navtech - tlp06iap00

Change: AD name.

RNAV (GNSS) RWY 28 Hewanorra INTL **ST LUCIA/VIEUX FORT**

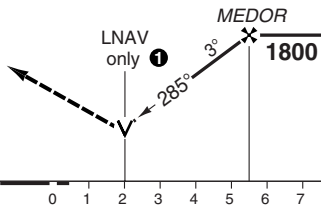


For INITIAL APCH
See Chart 50 - 1

50 - 7

MAPt RW28

Climb on 285° to **3000**
to TUBED and hold.



- 1** CAT A - 2.2nm
- CAT B - 2.3nm
- CAT C - 2.4nm
- CAT D - 2.5nm

0 1 2 3 4 5 6 7 8 9 10 11 12 nm

ACFT	LNAV/VNAV	LNAV	Circling ^a
A	700 (686) 1500m	700 (686) 1500m	1130 (1116) 1.5km
B			1130 (1116) 1.6km
C	700 (686) 2400m	700 (686) 2400m	1230 (1216) 2.4km
D			710 (696) 2400m

^a South of AD.

LDA 2594x46
8511x151ft
P 3°



NALS

Reverse side blank

Change: AD name.

JAR-OPS Minima Hewanorra INTL ST LUCIA/VIEUX FORT

The following Minima is for Public Transport aircraft and conforms to JAR-OPS1 regulations.

STRAIGHT-IN APPROACH		C				D			
R/W	Procedure	DA/ MDA QNH ft	DH/ MDH QFE ft	Vis m	Vis No ALS m	DA/ MDA QNH ft	DH/ MDH QFE ft	Vis m	Vis No ALS m
10	VOR/DME (1)	730	720	3600	3600	730	720	4000	4000
10	VOR (1)	790	780	3600	3600	790	780	4000	4000
10	NDB (1)	790	780	3600	3600	790	780	4000	4000
10	RNAV (L/VNAV)(1)(2)	690	680	2000	2000	690	680	2000	2000
10	RNAV (LNAV)(1)(2)	820	810	2000	2000	850	840	2000	2000
28	VOR/DME (1)	770	760	3600	N/A	770	760	4000	N/A
28	VOR (1)	770	760	2000	N/A	770	760	4000	N/A
28	NDB (1)	890	880	4400	N/A	890	880	4800	N/A
28	RNAV (L/VNAV)(1)(2)	700	690	2000	N/A	700	690	2000	N/A
28	RNAV (LNAV)(1)(2)	700	690	2000	N/A	710	700	2000	N/A

Notes:

(1) Procedure based on aerodrome elevation.

(2) Values shown are RVR.

CIRCLING		C			D		
R/W	Procedure	MDA QNH ft	MDH QFE ft	Vis m	MDA QNH ft	MDH QFE ft	Vis m
10/28	RNAV (1)	1230	1220	2400	1230	1220	3600
	All Other Procs (1)	1230	1220	4800	1230	1220	4800

Notes:

(1) N/A North of runway 10/28.

TAKE-OFF		C		D	
Runway	Facilities	RVR	Vis	RVR	Vis
10/28	REDL and/or RCL	400	-	400	-
10/28	Nil (Day only)	500	-	500	-

Notes:

JAR-OPS Minima Hewanorra INTL ST LUCIA/VIEUX FORT

The following Minima is for Public Transport aircraft and conforms to JAR-OPS1 regulations.

STRAIGHT-IN APPROACH		A				B			
R/W	Procedure	DA/ MDA QNH ft	DH/ MDH QFE ft	Vis m	Vis No ALS m	DA/ MDA QNH ft	DH/ MDH QFE ft	Vis m	Vis No ALS m
10	VOR/DME (1)	730	720	1500	1500	730	720	2000	2000
10	VOR (1)	790	780	1500	1500	790	780	2000	2000
10	NDB (1)	790	780	1500	1600	790	780	2000	2000
10	RNAV (L/VNAV)(1)(2)	690	680	1500	1500	690	680	1500	1500
10	RNAV (LNAV)(1)(2)	770	760	1500	1500	800	790	1500	1500
28	VOR/DME (1)	770	760	1500	N/A	770	760	2000	N/A
28	VOR (1)	770	760	1500	N/A	770	760	1500	N/A
28	NDB (1)	890	880	2000	N/A	890	880	2000	N/A
28	RNAV (L/VNAV)(1)(2)	700	690	1500	N/A	700	690	1500	N/A
28	RNAV (LNAV)(1)(2)	700	690	1500	N/A	700	690	1500	N/A

Notes:

(1) Procedure based on aerodrome elevation.

(2) Values shown are RVR.

CIRCLING		A			B		
R/W	Procedure	MDA QNH ft	MDH QFE ft	Vis m	MDA QNH ft	MDH QFE ft	Vis m
10/28	RNAV (1)	1130	1120	1500	1130	1120	1600
	All Other Procs (1)	1130	1120	2000	1130	1120	2400

Notes:

(1) N/A North of runway 10/28.

TAKE-OFF		A		B	
Runway	Facilities	RVR	Vis	RVR	Vis
10/28	REDL and/or RCL	400	-	400	-
10/28	Nil (Day only)	500	-	500	-

Notes: