

## Airport information:

Country: Puerto Rico

City: SAN JUAN

Coordinates: N 18° 26.4', W 066° 00.1'

Elevation: 9

Customs: Customs

Fuel: Jet, JP4, JP5

RFF: Index D

hours: H24

## Runways:

Runway 08

Takeoff length: 3048, Landing length: 3048

Runway 10

Takeoff length: 2443, Landing length: 2443

Runway 26

Takeoff length: 3048, Landing length: 3048

Runway 28

Takeoff length: 2443, Landing length: 2443

# AERODROME

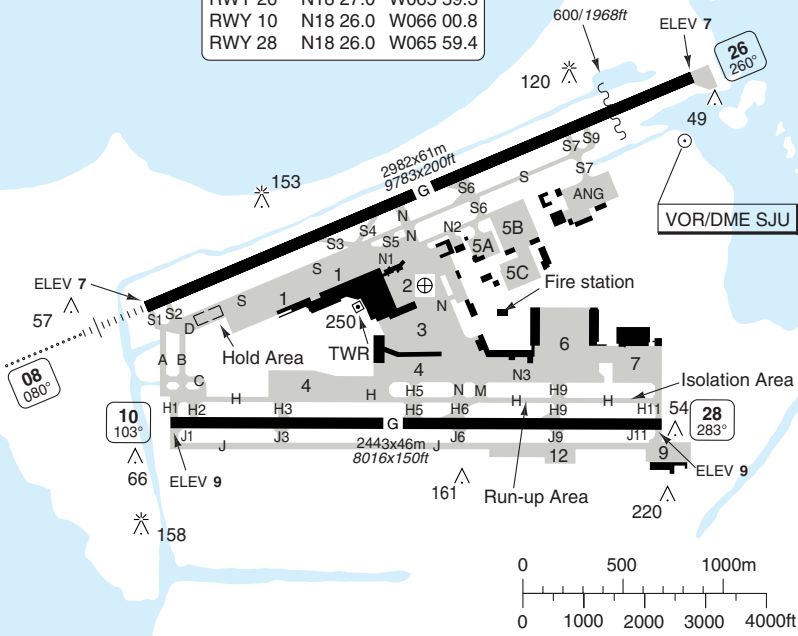
Luis Munoz Marin INTL **SAN JUAN**

10 - 1

San Juan CLR <b>126.4</b>	GND <b>121.9</b>	TWR <b>132.05</b>	ATIS (D) <b>125.8</b>	
AD Elev <b>9</b>	ARP: N18 26.4 W066 00.1	RFF: Index D	AD HR: H24	



THR Coordinates		
RWY 08	N18 26.3	W066 00.9
RWY 26	N18 27.0	W065 59.3
RWY 10	N18 26.0	W066 00.8
RWY 28	N18 26.0	W065 59.4



RWY	Slope	TORA m/ft	LDA m/ft	ALS	REDL	Additional
08	0	2982 / 9783	2982 / 9783	M-I	H	P 3°
26	0	2982 / 9783	2982 / 9783	-	H	REIL
10	0	2443 / 8016	2443 / 8016	-	H	P 3°
28	0	2443 / 8016	2443 / 8016	-	H	P 3°

**STATE TAKE OFF MINIMA**

RWY	Facilities	RVR/VIS	
		1-2 ENG	3-4 ENG
All	HREDL or RCLL or RCL	1600ft / 1/4sm	
	Adequate vis ref	1/4sm	
	Standard	5000ft / 1sm	2400ft / 1/2sm

© Navitech - tjsj01aorg0

Change: Var, RWYs, AD elev.

**THIS CHART IS A PART OF NAVIGRAPH NDAC AND IS INTENDED FOR FLIGHT SIMULATION USE ONLY**

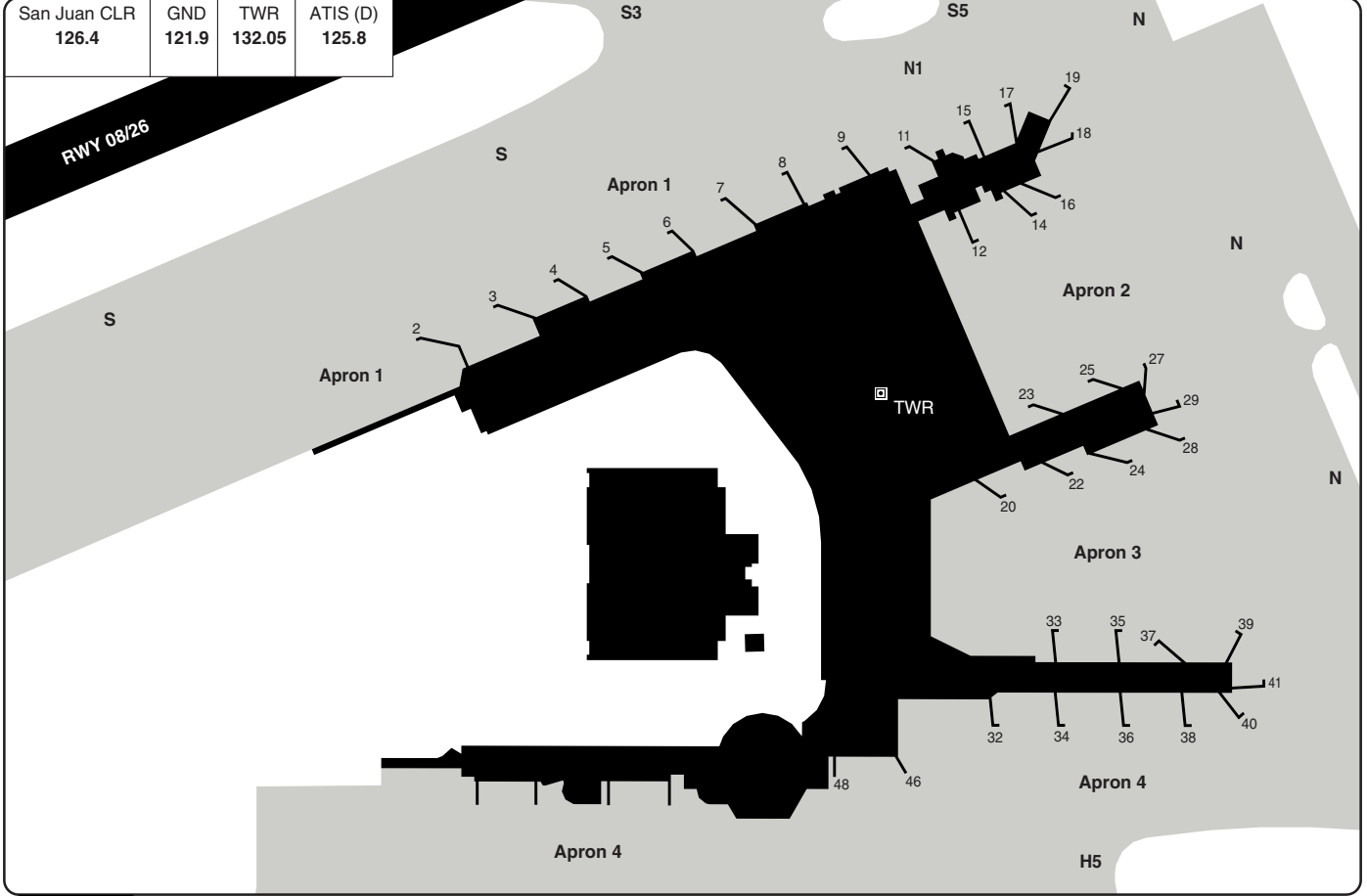
10 - 2 | 23 MAR 11

Puerto Rico - TJSJ / SJU

Luis Munoz Marin INTL SAN JUAN

AERODROME Parking

San Juan CLR	GND	TWR	ATIS (D)
126.4	121.9	132.05	125.8



10 - 2

© Navtech - tjsj02laorgo

Change: New chart.

THIS CHART IS A PART OF NAVIGRAPH NDAC AND IS INTENDED FOR FLIGHT SIMULATION USE ONLY

# GENERAL

Luis Munoz Marin INTL **SAN JUAN**

## GENERAL INFORMATION

**1. TRAFFIC NOTE**

Right hand circuit RWY 08 and 10.

**2. SPEED**

MAX 250kt below 10000ft.

**3. TWY RESTRICTION**

3.1 Be alert to RWY crossing CLR. Readback of all RWY holding instructions is required.

3.2 TWY J closed to ACFT with wingspan greater than 35.9m/118ft.

**4. Low Level Wind shear Alert System AVBL.**

**5. NAV RESTRICTION**

VOR/DME 114.0 SJU unusable:  
120° - 164° beyond 10nm below 9000ft  
165° - 260° beyond 28nm below 5000ft

**6. DEPARTURE PROCEDURE**

Southeastbound (sector 120° - 165°)

**MNM CLIMB GRADIENT:** 6% up to 4200ft

or

Climb to 2900ft before entering this sector.

10 - 3

SID **RNAV** ACONY 1

Luis Munoz Marin INTL **SAN JUAN**

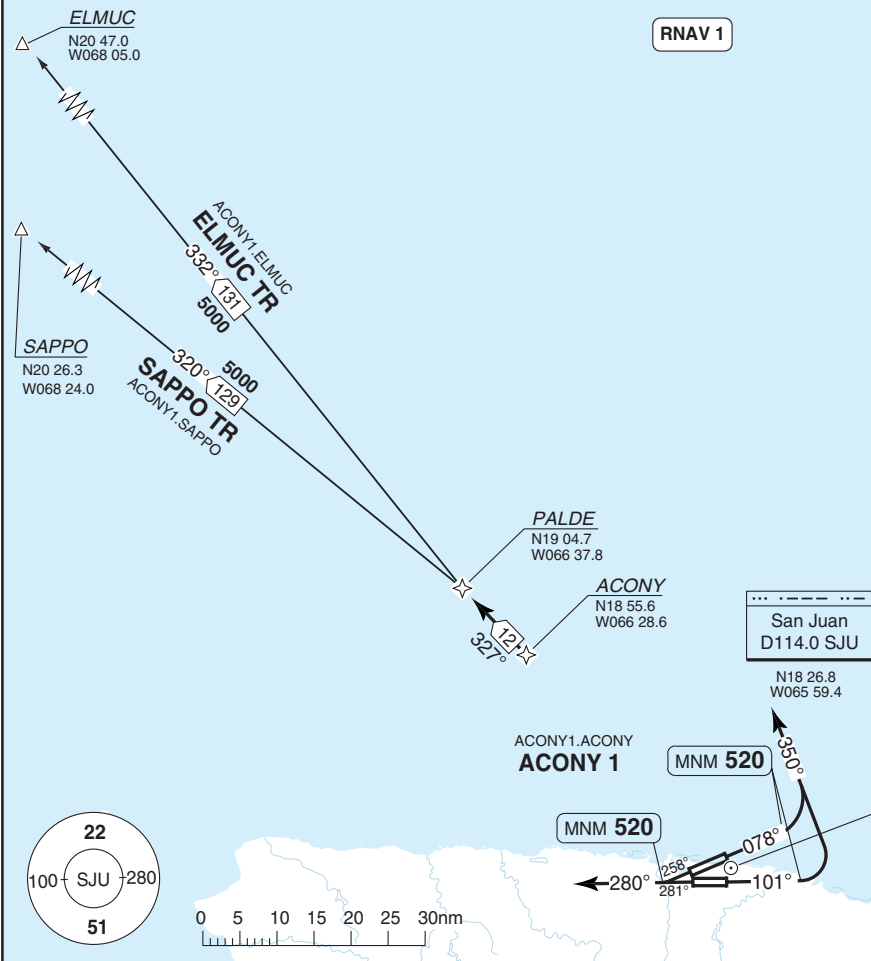
San Juan GND <b>121.9</b>	CLR <b>126.4</b>	TWR <b>132.05</b>	DEP <b>120.9</b> N, E <b>119.4</b> W, SW	ATIS (D) <b>125.8</b>
------------------------------	---------------------	----------------------	--	--------------------------

Radar and GPS required

Jet ACFT only

RNAV 1

TA **18000** AD Elev **9**



**NOTE:** Expect CLR to FL280 or requested ALT if lower, 10min after DEP.  
**SPEED:** MAX 250kt below 10000ft.  
**ALT RESTRICTION:** Maintain **5000** unless assigned lower ALT.

SID	RWY	Routeing
ACONY 1	08	Climb on 078° to 520 - turn left 350° - expect vector ACONY - 327° PALDE
	10	Climb on 101° to 520 - turn left 350° - expect vector ACONY - 327° PALDE
	26	Climb on 258° to 520 - turn right 280° - expect vector ACONY - 327° PALDE
	28	Climb on 281° to 520 - 280° - expect vector ACONY - 327° PALDE
Transitions	Routeing	
ELMUC	ELMUC	
SAPPO	SAPPO	

Change: AD elev.

© Navtech - tj[sj]01daor[g]o

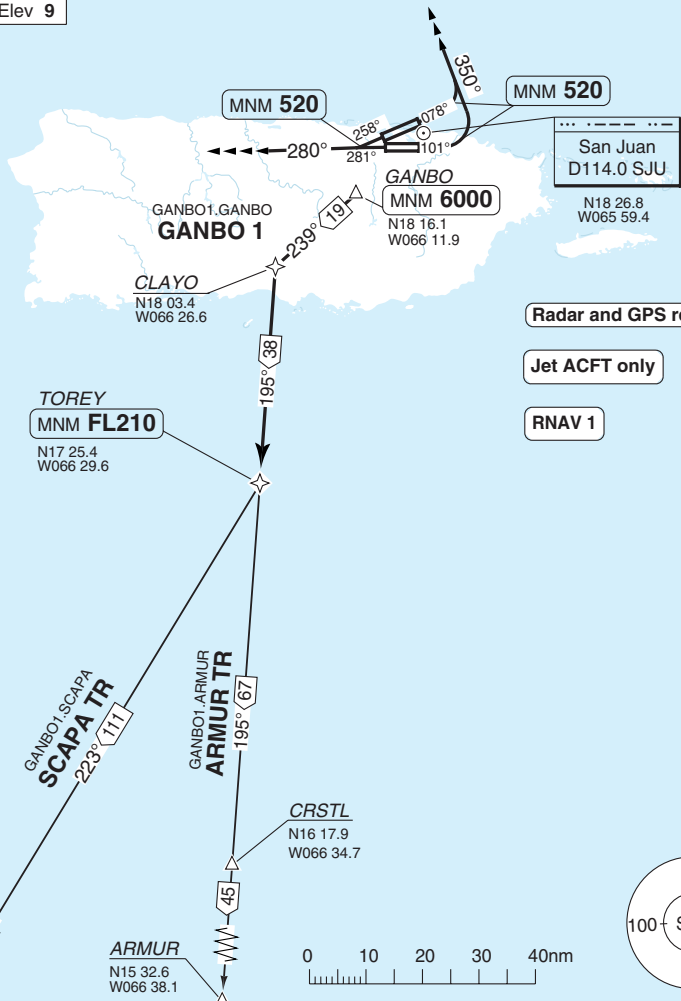
30 - 1

SID **RNAV** GANBO 1

Luis Munoz Marin INTL **SAN JUAN**

San Juan GND <b>121.9</b>	CLR <b>126.4</b>	TWR <b>132.05</b>	DEP <b>120.9 N, E</b> <b>119.4 W, SW</b>	ATIS (D) <b>125.8</b>
------------------------------	---------------------	----------------------	--	--------------------------

TA **18000** | AD Elev **9**

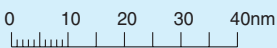
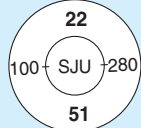


**Radar and GPS required**

**Jet ACFT only**

**RNAV 1**

San Juan  
D114.0 SJU  
N18 26.8  
W065 59.4



**NOTE:** Expect CLR to FL280 or requested ALT if lower, 10min after DEP.

**SPEED:** MAX 250kt below 10000ft.

**MNM CLIMB GRADIENT:** 4.4% up to 21000.

**ALT RESTRICTION:** Maintain **5000** unless assigned lower ALT.

SID	RWY	Routeing
GANBO 1	08	Climb on HDG 078° to <b>520</b> , turn left 350° for RAD vector GANBO - CLAYO - TOREY
	10	Climb on HDG 101° to <b>520</b> , turn left 350° for RAD vector GANBO - CLAYO - TOREY
	26	Climb on HDG 258° to <b>520</b> , 280° for RAD vector GANBO - CLAYO - TOREY
	28	Climb on HDG 281° to <b>520</b> , 280° for RAD vector GANBO - CLAYO - TOREY

Transition	Routeing
ARMUR	CRSTL - ARMUR
SCAPA	SCAPA

Change: AD elev, renumbered.

30 - 2

© Navtech - tjjsj02daorg0

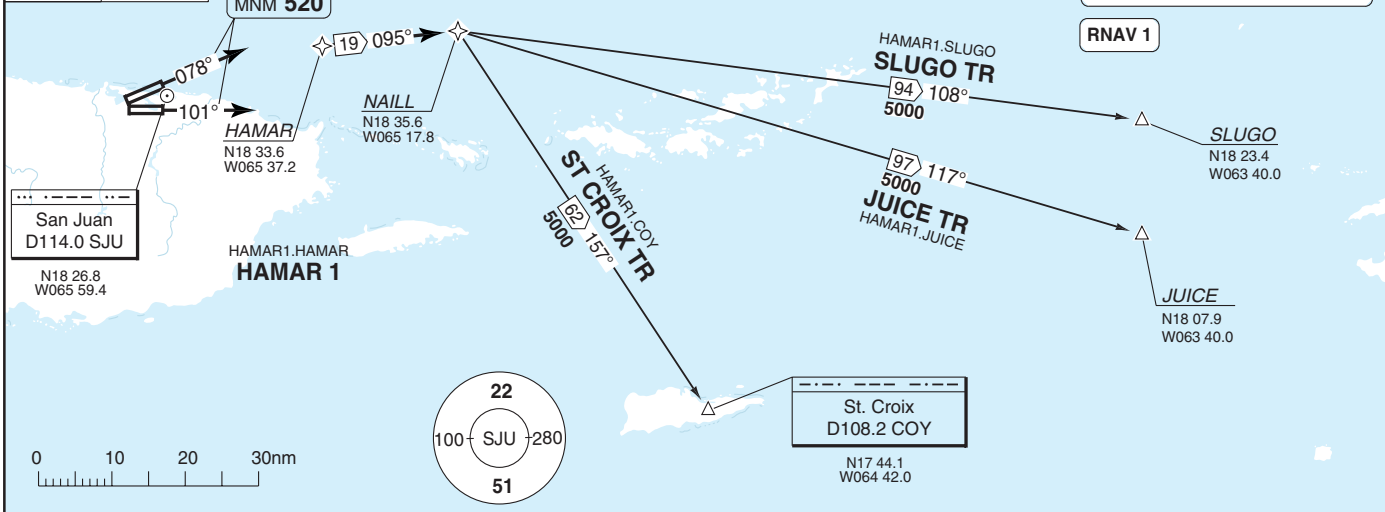


Luis Munoz Marin INTL SAN JUAN

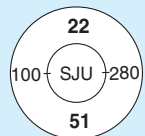
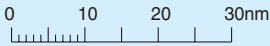
SID RNAV HAMAR 1

San Juan GND 121.9	CLR 126.4	TWR 132.05	DEP 120.9 N, E 119.4 W, SW	ATIS (D) 125.8
-----------------------	--------------	---------------	----------------------------------	-------------------

TA 18000 AD Elev 9



- Radar and GPS required
- Prop and Turboprop ACFT only
- RNAV 1



**NOTE:** Expect CLR to FL280 or requested ALT if lower, 10min after DEP.

**SPEED:** MAX 250kt below 10000ft.

**ALT RESTRICTION:** Maintain **5000** unless assigned lower ALT.

SID	RWY	Routeing
HAMAR 1	08	Climb on HDG 078° to 520 - expect vector to HAMAR - 095° to NAILL
	10	Climb on HDG 101° to 520 - expect vector to HAMAR - 095° to NAILL
<b>Transition</b>	<b>Routeing</b>	
JUICE		JUICE
SLUGO		SLUGO
ST. CROIX		COY

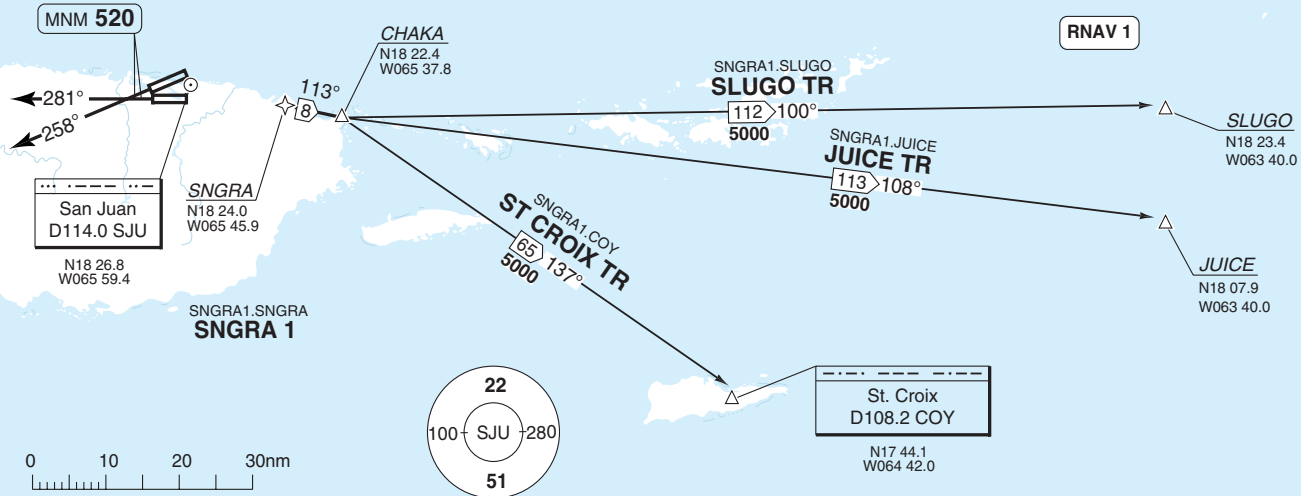
THIS CHART IS A PART OF NAVIGRAPH NDAC AND IS INTENDED FOR FLIGHT SIMULATION USE ONLY

Change: AD elev. renumbered.

© Navtech - tjsj05daorg0

San Juan GND 121.9	CLR 126.4	TWR 132.05	DEP 120.9 N, E 119.4 W, SW	ATIS (D) 125.8
-----------------------	--------------	---------------	----------------------------------	-------------------

TA 18000 AD Elev 9



Radar and GPS required

Prop and Turboprop ACFT only

RNAV 1

**NOTE:** Expect CLR to FL280 or requested ALT if lower, 10min after DEP.

**SPEED:** MAX 250kt below 10000ft.

**ALT RESTRICTION:** Maintain **5000** unless assigned lower ALT.

SID	RWY	Routeing
SNGRA 1	26	Climb on HDG 258° to 520 - expect vector to SNGRA - 113° to CHAKA
	28	Climb on HDG 281° to 520 - expect vector to SNGRA - 113° to CHAKA
<b>Transition</b>	<b>Routeing</b>	
JUICE	JUICE	
SLUGO	SLUGO	
ST. CROIX	COY	

SID RNAV SNGRA 1

30 - 5 | 23 FEB 11

Luis Munoz Marin INTL SAN JUAN

Puerto Rico - TJSJ / SJU

**30 - 5**

SID CRSTL 1

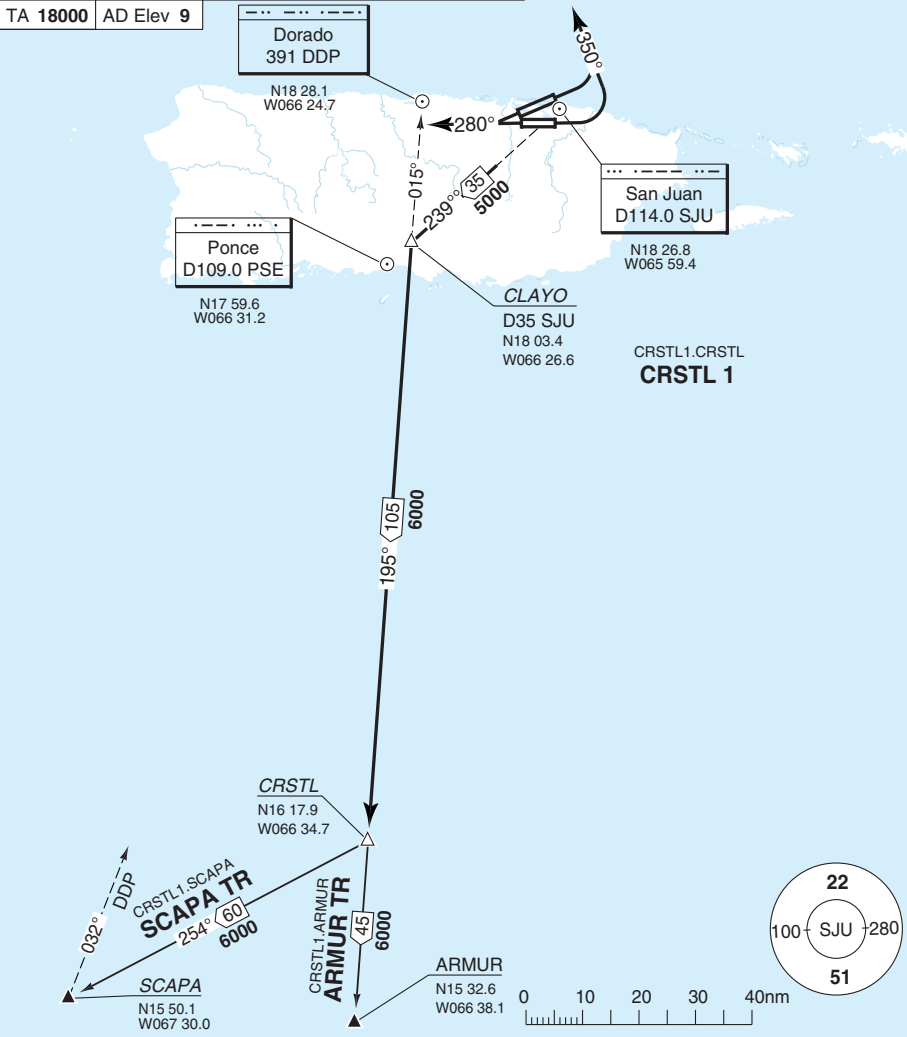
Luis Munoz Marin INTL SAN JUAN

San Juan GND 121.9	CLR 126.4	TWR 132.05	DEP 120.9 N, E 119.4 W, SW	ATIS (D) 125.8
-----------------------	--------------	---------------	----------------------------------	-------------------

RNAV required

TA 18000 AD Elev 9

30 - 6



**NOTE:** Expect CLR to FL 280 or requested ALT if lower, 10min after DEP.

**SPEED:** MAX 250kt below 10000ft.

**ALT RESTRICTION:** Maintain **5000** unless assigned lower ALT.

SID	RWY	Routing
CRSTL 1	08/10	Turn left - HDG 350° for RAD vector to R239 SJU - CLAYO - CRSTL
	26/28	HDG 280° for RAD vector to R239 SJU - CLAYO - CRSTL
<b>Transition</b>	<b>Routing</b>	
ARMUR	ARMUR	
SCAPA	SCAPA	

Change: AD elev, renumbered.

**THIS CHART IS A PART OF NAVIGRAPH NDAC AND IS INTENDED FOR FLIGHT SIMULATION USE ONLY**

SID JAAWS 9, VERMO 5

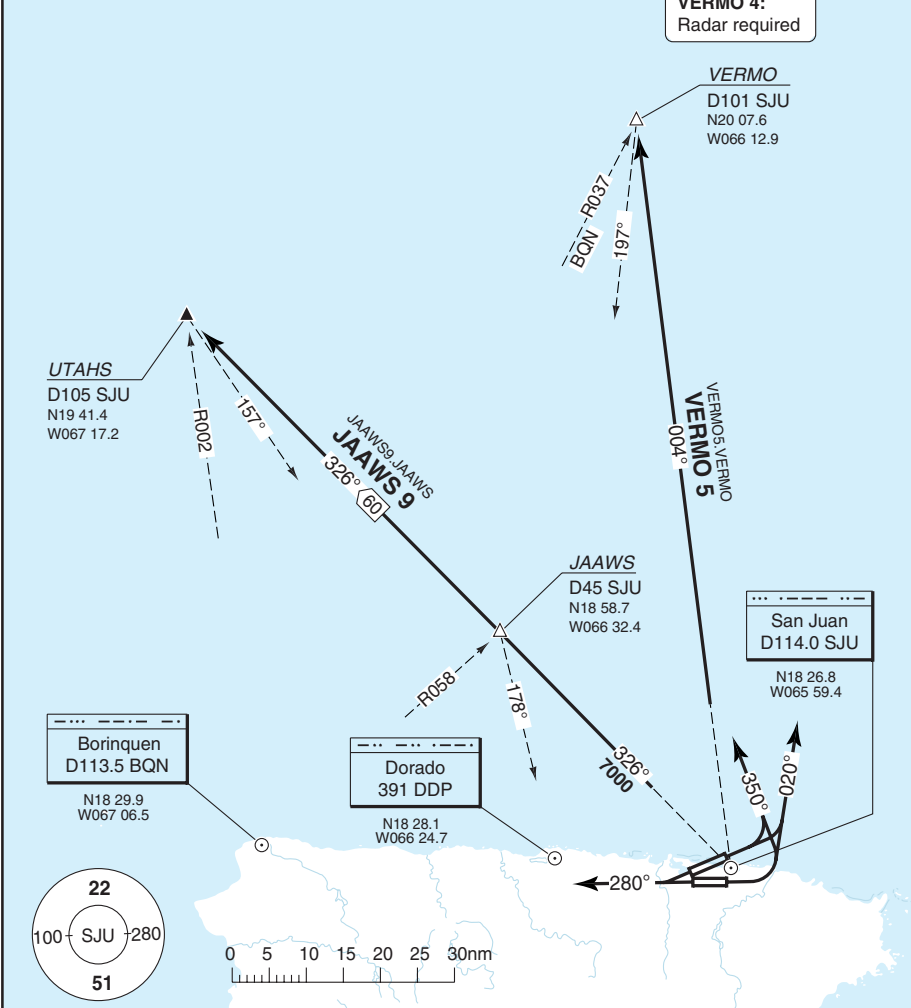
Luis Munoz Marin INTL **SAN JUAN**

San Juan GND <b>121.9</b>	CLR <b>126.4</b>	TWR <b>132.05</b>	DEP <b>120.9</b> N, E <b>119.4</b> W, SW	ATIS (D) <b>125.8</b>
------------------------------	---------------------	----------------------	--	--------------------------

**JAAWS 9:**  
RNAV or DME required

**VERMO 4:**  
Radar required

TA **18000** | AD Elev **9**



**30 - 7**

**NOTE:** Expect CLR to FL280 or requested ALT if lower, 10min after DEP.

**SPEED:** MAX 250kt below 10000ft.

**ALT RESTRICTION:** Maintain **5000** unless assigned lower ALT.

SID	RWY	Routeing
<b>JAAWS 9</b>	08/10	Turn left - HDG 350° for RAD vector to R326 SJU - JAAWS - UTAHS
	26/28	HDG 280° for RAD vector to R326 SJU - JAAWS - UTAHS
<b>VERMO 5</b>	08/10	Turn left - HDG 020° for RAD vector to R004 SJU - VERMO
	26/28	HDG 280° for RAD vector to R004 SJU - VERMO

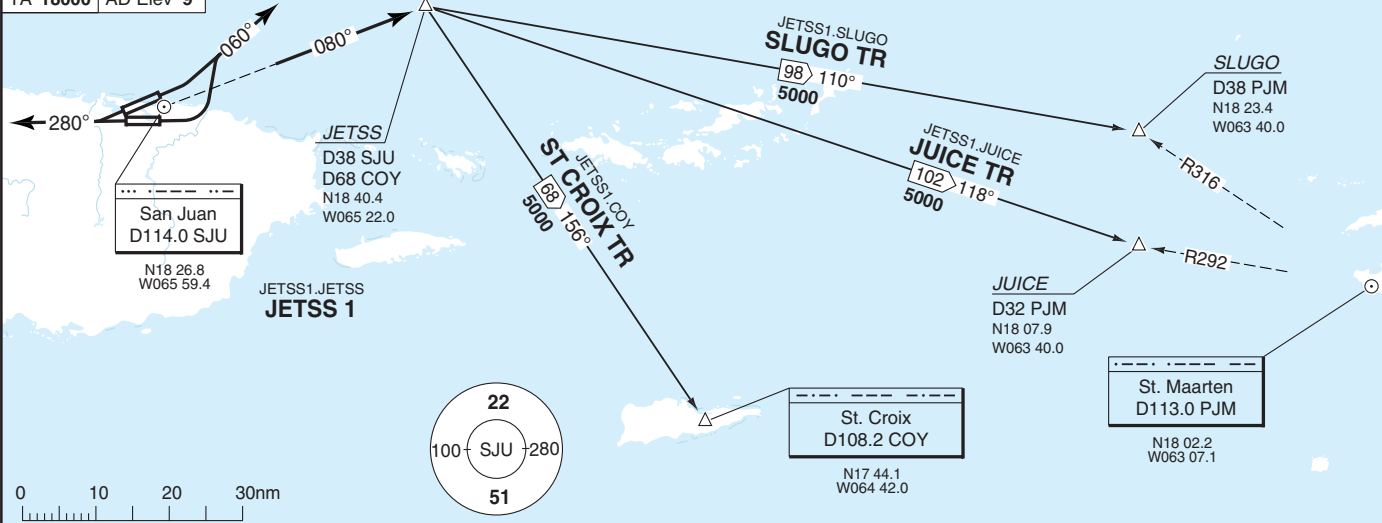
Change: AD elev, renumbered.

**THIS CHART IS A PART OF NAVIGRAPH NDAC AND IS INTENDED FOR FLIGHT SIMULATION USE ONLY**

San Juan GND 121.9	CLR 126.4	TWR 132.05	DEP 120.9 N, E 119.4 W, SW	ATIS (D) 125.8
-----------------------	--------------	---------------	----------------------------------	-------------------

TA 18000 AD Elev 9

RNAV required



**NOTE:** Expect CLR to FL280 or requested ALT if lower, 10min after DEP.  
**SPEED:** MAX 250kt below 10000ft.  
**ALT RESTRICTION:** Maintain **5000** unless assigned lower ALT.

SID	RWY	Routeing
JETSS 1	08/10	Turn left - HDG 060° for RAD vector to R080 SJU - JETSS
	26/28	HDG 280° for RAD vector to R080 SJU - JETSS
Transition	<b>Routeing</b>	
JUICE	JUICE	
SLUGO	SLUGO	
ST. CROIX	COY	

THIS CHART IS A PART OF NAVIGRAPH NDAC AND IS INTENDED FOR FLIGHT SIMULATION USE ONLY

© Navtech - tjsj01aorg0

San Juan APP	TWR	GND	ATIS (D)
120.9 N,E	132.05	121.9	125.8
119.4 W, SW			

TL ATC AD Elev 9

ELMUC  
N20 47.0  
W068 05.0

HARDE  
N20 00.4  
W068 49.0

HARDE.BEANO3  
HARDE TR  
78 132°  
FL180

ELMUC.BEANO3  
ELMUC TR  
90 175°  
FL180

Scale distorted

SHMUU  
N19 20.7  
W067 38.4

68 6000 132°

KATOK  
N18 49.9  
W068 00.0

KATOK.BEANO3  
KATOK TR  
79 104°  
11000

BEANO  
At 11000

N18 45.6  
W066 37.2

MAELO  
N18 42.4  
W065 49.9

**Landing WEST**

① RWY 26/28: Expect radar vectors to final APCH.

6nm

132°

312°

24 6000

140°

45 3000

105°

105° ①

2000

MYLET  
MNM 6000  
N18 30.2  
W066 17.4

154°

3000

③ TNNER  
N18 26.0  
W066 11.1

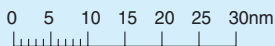
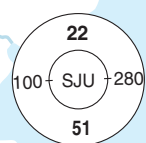
**Landing EAST**

- ② RWY 08 via WESEN
- ③ RWY 10 via TNNER

② WESEN  
N18 22.2  
W066 11.1

San Juan  
D114.0 SJU

N18 26.8  
W065 59.4



Radar and GPS required

Jet ACFT only

RNAV 1

STAR ENAV BEANO 3

40 - 1 | 23 FEB 11

Luis Munoz Marin INTL SAN JUAN

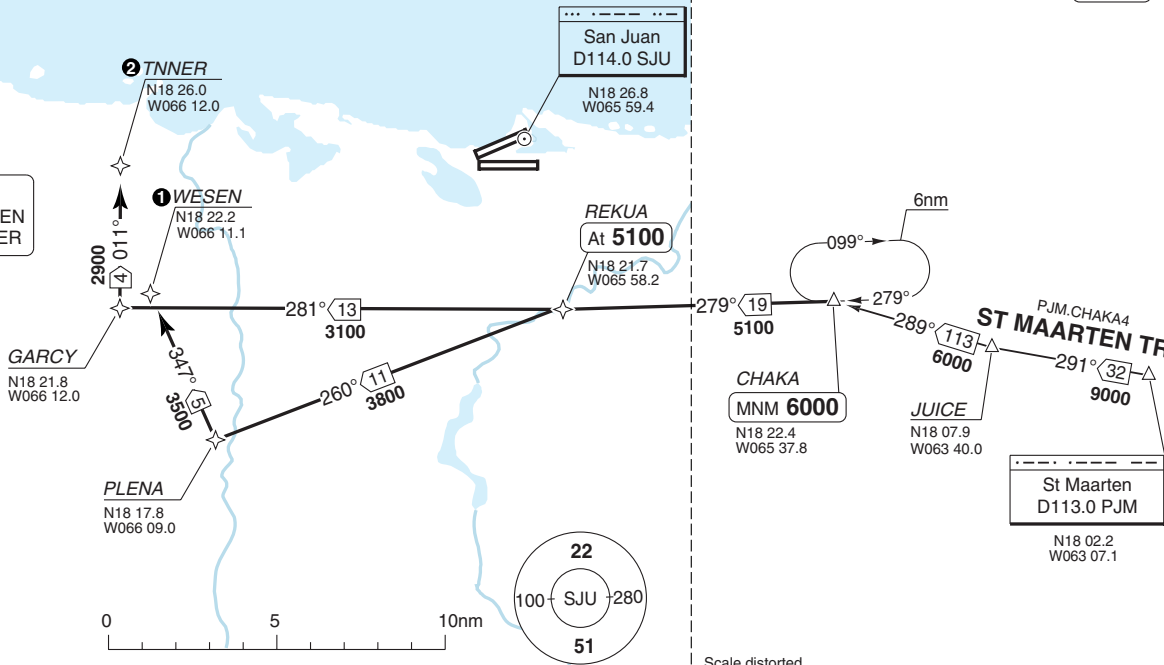
Puerto Rico - TJSJ/SJU

San Juan APP 120.9 N,E 119.4 W, SW	TWR 132.05	GND 121.9	ATIS (D) 125.8
--	---------------	--------------	-------------------

TL ATC AD Elev 9

**Landing EAST**

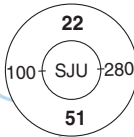
① RWY 08 via WESEN  
② RWY 10 via TNNER



Prop and Turboprop ACFT only

Radar and GPS required

RNAV 1

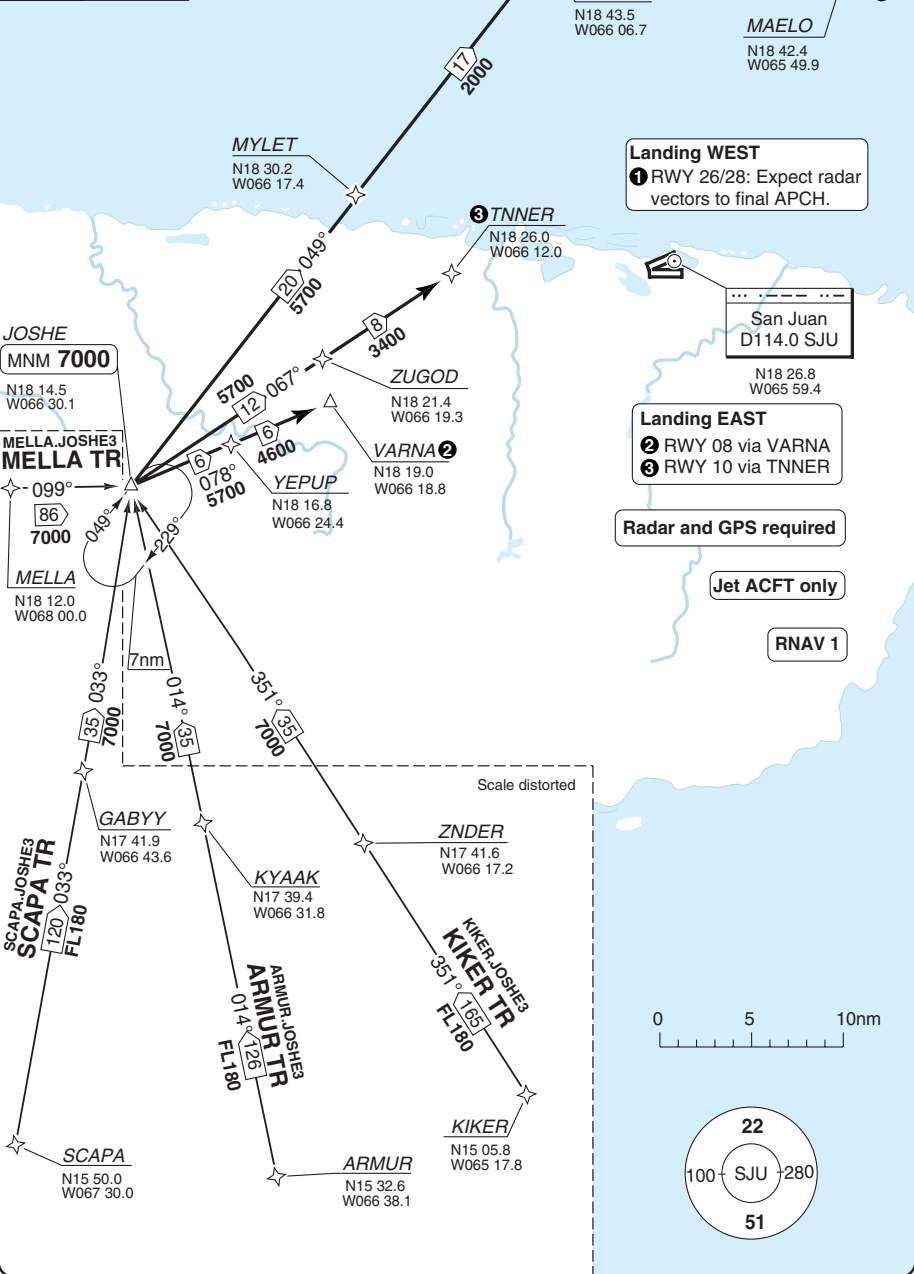


# STAR **RNAV** JOSHE 3

# Luis Munoz Marin INTL **SAN JUAN**

San Juan APP	TWR	GND	ATIS (D)
120.9 N,E	132.05	121.9	125.8
119.4 W, SW			

TL ATC AD Elev 9



**Landing WEST**  
 ① RWY 26/28: Expect radar vectors to final APCH.

**Landing EAST**  
 ② RWY 08 via VARNAs  
 ③ RWY 10 via TNNER

Radar and GPS required

Jet ACFT only

RNAV 1

40 - 3

© Navtech - tjsj03aaorg0

# STAR **RNAV** SAALR 2

# Luis Munoz Marin INTL **SAN JUAN**

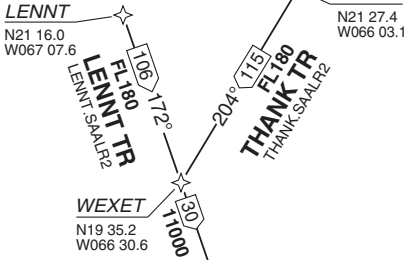
San Juan APP	TWR	GND	ATIS (D)
120.9 N,E	132.05	121.9	125.8
119.4 W, SW			

TL ATC AD Elev 9

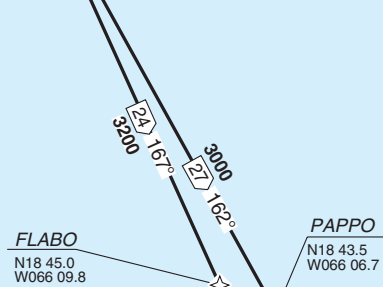
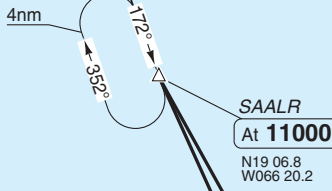
**Radar and GPS required**

**Jet ACFT only**

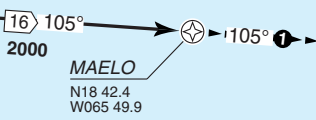
**RNAV 1**



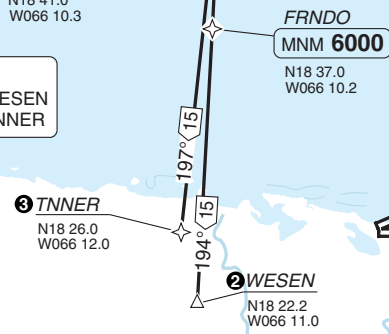
Scale distorted



**Landing WEST**  
① RWY 26/28: Expect radar vectors to final APCH.

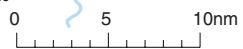
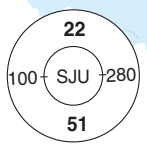


**Landing EAST**  
② RWY 08 via WESEN  
③ RWY 10 via TNNER



San Juan  
D114.0 SJU

N18 26.8  
W065 59.4



40 - 4

© Navtech - tjsj04aaorg00

Change: Landing note, AD elev.

**THIS CHART IS A PART OF NAVIGRAPH NDAC AND IS INTENDED FOR FLIGHT SIMULATION USE ONLY**

© Navtech - tjsj05aaorg0

San Juan APP	TWR	GND	ATIS (D)
120.9 N.E	132.05	121.9	125.8
119.4 W, SW			

TL ATC AD Elev 9

Radar and GPS required

Jet ACFT only

RNAV 1

San Juan  
D114.0 SJU

N18 26.8  
W065 59.4

Landing WEST

① RWY 26/28: Expect radar vectors to final APCH.

REKUA  
MNM 6000

N18 21.7  
W065 58.2

③ **TNNER**  
N18 26.0  
W066 12.0

② **WESEN**  
N18 22.2  
W066 11.0

3000

281° 13  
3100

GARCY  
N18 21.8  
W066 12.0

347° 5  
3500

260° 11  
3800

PLENA  
N18 17.8  
W066 09.0

Landing EAST

② RWY 08 via WESEN  
③ RWY 10 via TNNER

YUNKE  
N18 16.3  
W065 52.9

322° 16  
6000

023° 7  
2800

TROCO  
N18 11.2  
W065 45.5

GOUDA  
N17 56.1  
W063 40.0

St Maarten  
D113.0 PJM

N18 02.2  
W063 07.1

PJM.TROCO3  
**ST MAARTEN TR**

270° 32  
11000

MAVIE  
At 11000  
N18 03.2  
W065 33.1

317° 14  
315° 6000

135° 7nm

285° 108

DANDE  
N17 30.3  
W063 39.9

GABAR  
N17 21.2  
W063 00.0

GABAR.TROCO3  
**GABAR TR**

294° 39  
14000

Scale distorted

298° 113

317° 180  
11000

305° 160  
11000

MODUX  
N16 57.2  
W063 00.0

MODUX  
N16 18.0  
W063 00.0

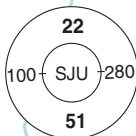
317° 180  
ILURI.TROCO3

315° 11000

317° 180  
ILURI.TROCO3

305° 160  
MODUX.TROCO3

MODUX  
N16 57.2  
W063 00.0



0 5 10nm

40 - 5

Reverse side blank

STAR ENAV TROCO 3

Luis Munoz Marin INTL SAN JUAN

Puerto Rico - TJSJ / SJU

40 - 5 23 FEB 11

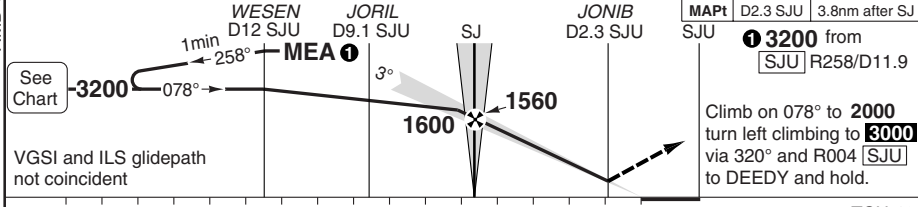
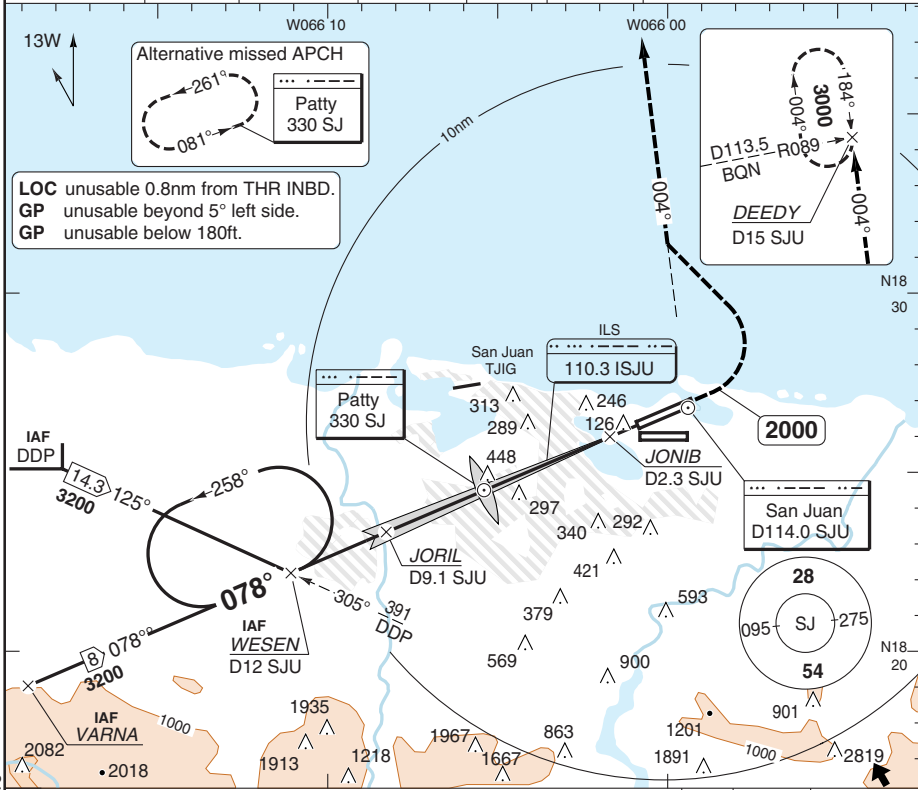
THIS CHART IS A PART OF NAVIGRAPH NDAC AND IS INTENDED FOR FLIGHT SIMULATION USE ONLY.

Change: Redesignated, landing note, AD elev.

# ILS RWY 08

## Luis Munoz Marin INTL SAN JUAN

San Juan APP 120.9 N, E 119.4 W, SW	TWR 132.05	GND 121.9	ATIS (D) 125.8				
ILS 110.3 ISJU	FAT 078°	TDZ Elev 9	AD Elev 9	TL ATC	TA 18000		



nm	15	14	13	12	11	10	9	8	7	6	5	4	3	2	1	0	TCH 46								
ACFT	<b>ILS+DME LOC+DME Circling</b>																								
A	<b>320</b> (302)	<b>560</b> (551) 1sm	<b>600</b> (591) 1sm														GS	80	100	120	140	160	LDA 2982x61 9783x200ft P 3° G MALSR		
B																	ROD 3.1°	440	550	650	760	870			
C		<b>560</b> (551) 1½sm	<b>610</b> (600) 1½sm														FAF +20s	1410	1380	1340	1300	1270			
D		<b>560</b> (551) 1¼sm	<b>710</b> (700) 2½sm														+40s	1270	1200	1120	1050	980			
																		FAF +60s	1120	1020	910	800	690		
																		FAF- 560	2:17	1:50	1:32	1:19	1:08		
																		FAF-MAPt	2:51	2:17	1:54	1:37	1:25		

**a** Authorisation required, otherwise 1010 (1000) 3sm

Change: Var, distances, LDA, AD elev.

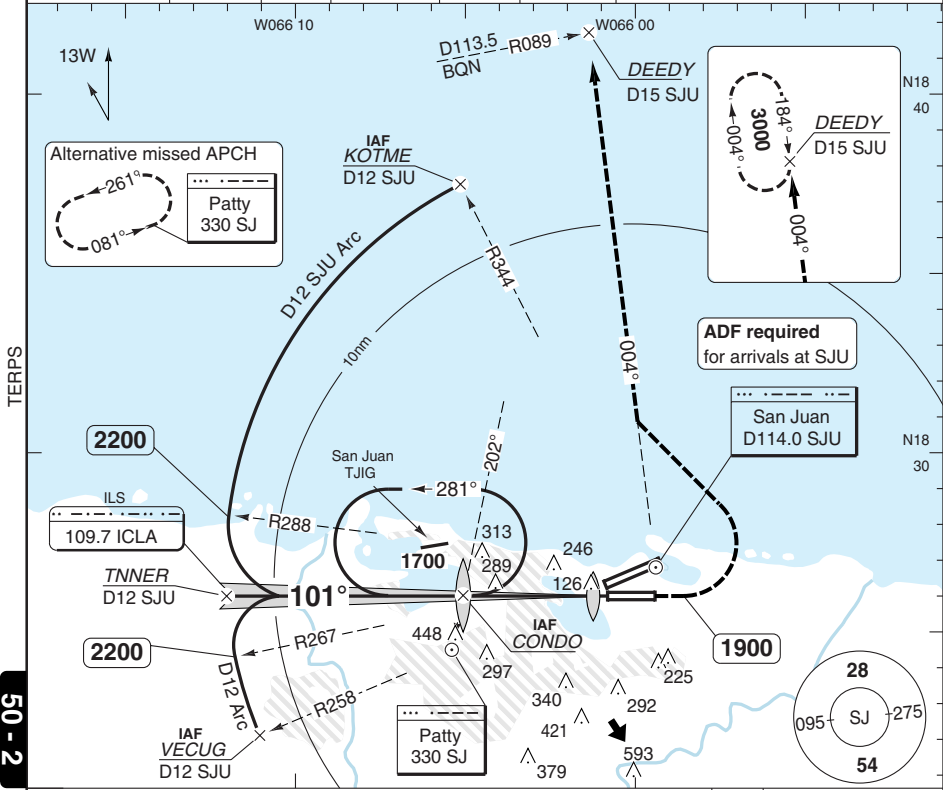
**THIS CHART IS A PART OF NAVIGRAPH NDAC AND IS INTENDED FOR FLIGHT PRACTICE USE ONLY**

# ILS RWY 10

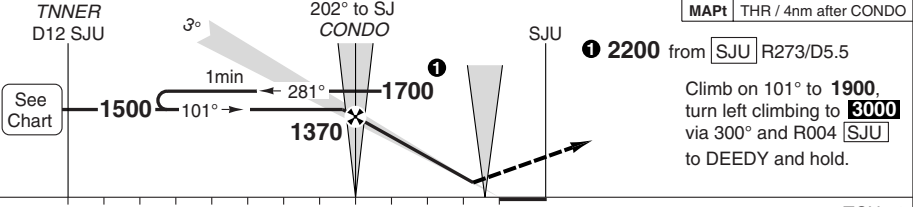
## Luis Munoz Marin INTL SAN JUAN

San Juan APP 120.9 N, E 119.4 W, SW	TWR 132.05	GND 121.9	ATIS (D) 125.8
---	---------------	--------------	-------------------

ILS 109.7 ICLA	FAT 101°	TDZ 9	AD Elev 9	TL ATC	TA 18000
----------------	----------	-------	-----------	--------	----------



MAPt THR / 4nm after CONDO



nm 12 11 10 9 8 7 6 5 4 3 2 1 0 TCH 52

ACFT	ILS	LOC	Circling <sup>a</sup>	GS	80	100	120	140	160	LDA 2443x46 8016x150ft P 3° G NALS
A	250 (235) ¾sm	600 (591) 1sm	600 (591) 1sm	ROD 3.1°	440	550	660	770	880	
B		600 (591) 1½sm	610 (600) 1½sm	FAF +20s	1230	1190	1160	1120	1080	
C		600 (591) 1½sm	610 (600) 1½sm	+40s	1080	1010	940	860	790	
D		600 (591) 1½sm	710 (700) 2½sm	+60s	940	830	720	610	-	
				FAF- 540	1:53	1:31	1:16	1:05	0:56	
				FAF-MAPt	3:00	2:24	2:00	1:43	1:30	

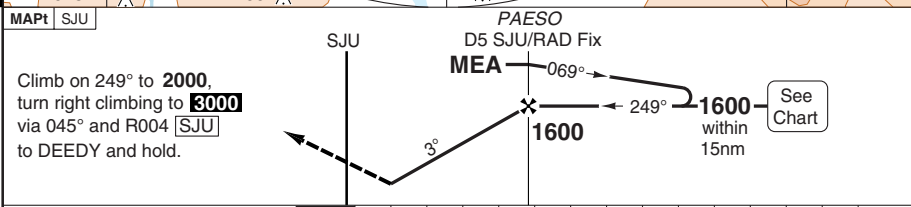
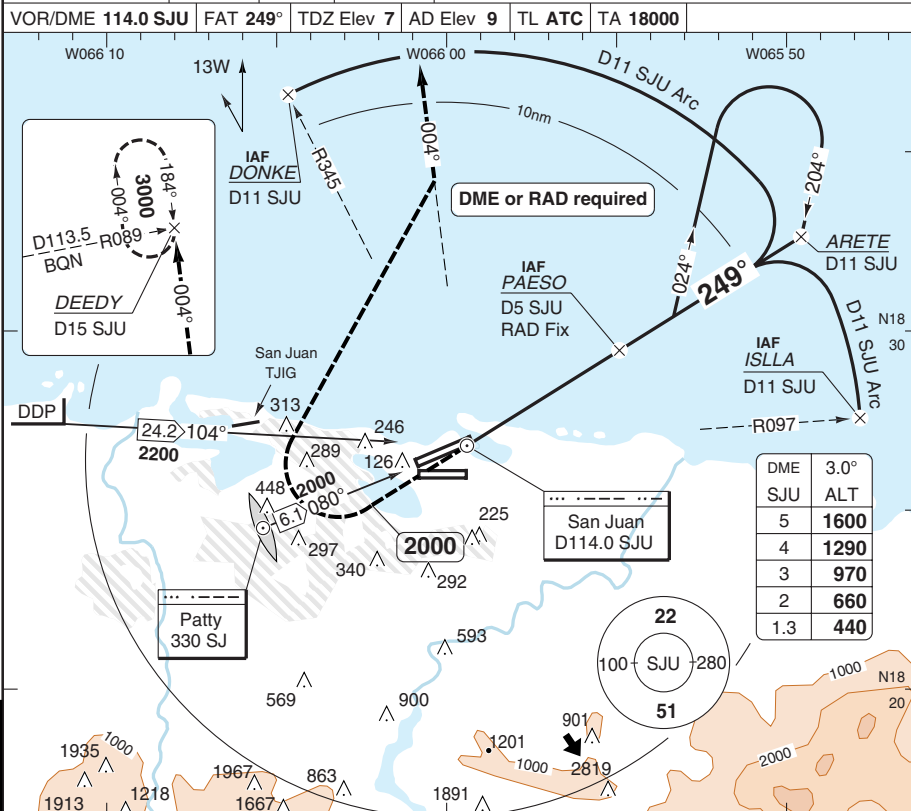
<sup>a</sup> Authorisation required, otherwise 1010 (1000) 3sm



# VOR RWY 26

# Luis Munoz Marin INTL SAN JUAN

San Juan APP 120.9 N, E 119.4 W, SW	TWR 132.05	GND 121.9	ATIS (D) 125.8
VOR/DME 114.0 SJU    FAT 249°    TDZ Elev 7    AD Elev 9    TL ATC    TA 18000			



TCH 45

ACFT	VOR	Circling <sup>a</sup>
A	440 (433) 1sm	600 (591) 1sm
B		
C	440 (433) 1 1/2sm	610 (600) 1 1/2sm
D	440 (433) 1 1/2sm	710 (700) 2 1/2sm

GS	80	100	120	140	160	LDA 2982x61 9783x200ft
ROD 3.0°	430	530	640	740	850	
FAF +20s	1460	1430	1390	1360	1320	
+40s	1320	1250	1180	1110	1040	
+60s	1180	1080	970	870	760	
FAF- 440	2:46	2:12	1:50	1:34	1:23	

<sup>a</sup> Authorisation required, otherwise 1010 (1000) 3sm

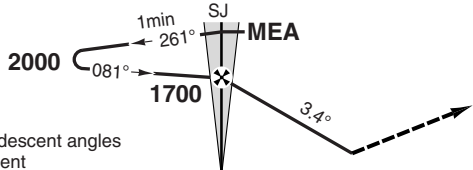
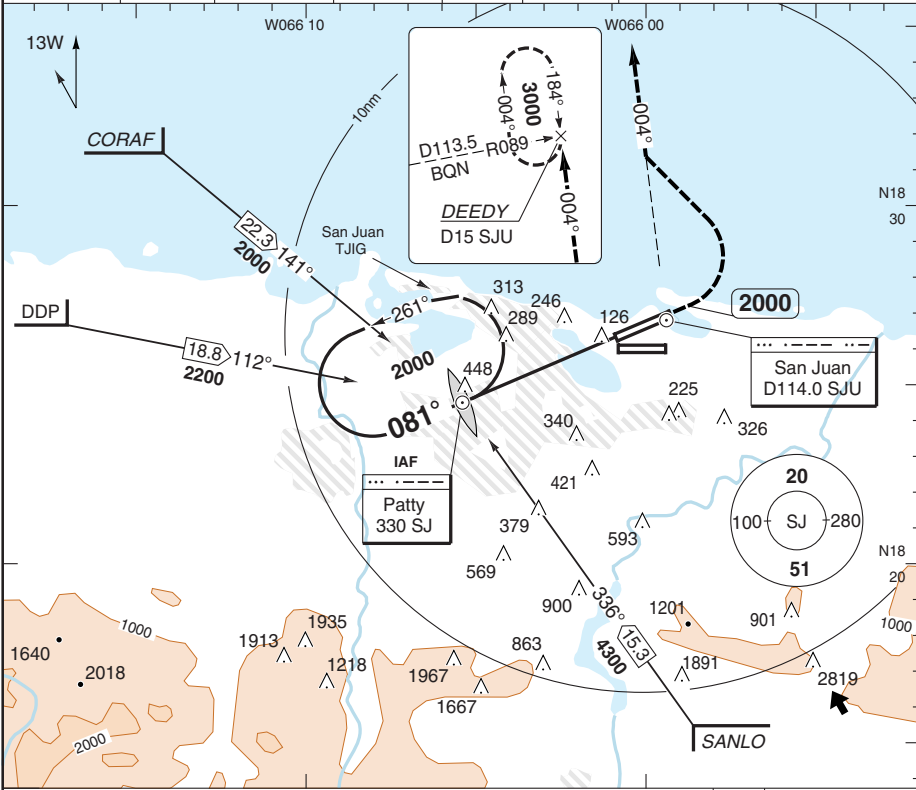
50 - 4  
AMD 20  
© Navtech - tjsj04iaip00

NALS

# NDB RWY 08

## Luis Munoz Marin INTL SAN JUAN

San Juan APP 120.9 N, E 119.4 W, SW	TWR 132.05	GND 121.9	ATIS (D) 125.8
NDB 330 SJ	FAT 081°	TDZ Elev 9	AD Elev 9
TL ATC		TA 18000	



Climb on 081° to **2000**, turn left climbing to **3000** via R004 [SJU] to DEEDY and hold.

VGSI and descent angles not coincident

nm 12 11 10 9 8 7 6 5 4 3 2 1 0 TCH 46

ACFT	NDB	Circling <sup>a</sup>
A	600 (591) 1sm	600 (591) 1sm
B	600 (591) 1 1/4sm	610 (600) 1 1/2sm
C	600 (591) 1 1/2sm	710 (700) 2 1/2sm

GS	80	100	120	140	160
ROD 3.4°	480	600	720	840	960
FAF +20s	1550	1510	1470	1430	1390
+40s	1390	1310	1230	1150	1070
+60s	1230	1110	990	870	750
FAF- 600	2:19	1:51	1:32	1:19	1:09
FAF-MAPt	3:27	2:45	2:18	1:58	1:43

LDA 2982x61  
9783x200ft  
P 3°  
MALSR

<sup>a</sup> Authorisation required, otherwise 1010 (1000) 3sm

# RNAV (GPS) RWY 08

Luis Munoz Marin INTL **SAN JUAN**

San Juan APP <b>120.9</b> N, E <b>119.4</b> W, SW	TWR <b>132.05</b>	GND <b>121.9</b>	ATIS (D) <b>125.8</b>
---	----------------------	---------------------	--------------------------

RNAV	FAT <b>078°</b>	TDZ Elev <b>9</b>	AD Elev <b>9</b>	TL <b>ATC</b>	TA <b>18000</b>
------	-----------------	-------------------	------------------	---------------	-----------------

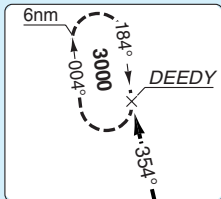
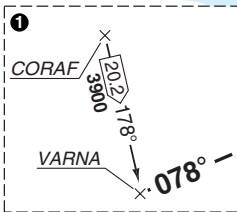
**TEMP RESTRICTION**  
For uncompensated Baro-VNAV systems, LNAV/VNAV proc NA below -15°C or above 48°C.

**GPS or RNP-0.3 required**

**DME/DME RNP-0.3 NA**

**WAAS VNAV NA**

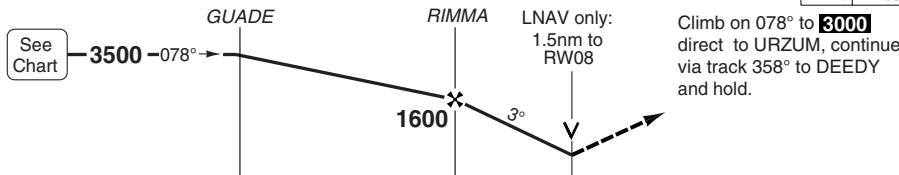
PROC NA for arrivals at CORAF on RTE 6 Northwest bound and A523, G432 North bound.



TERPS

9 - 05

AMD 1



MAPt RWY08

nm	16	15	14	13	12	11	10	9	8	7	6	5	4	3	2	1	0	TCH 46
----	----	----	----	----	----	----	----	---	---	---	---	---	---	---	---	---	---	--------

ACFT	LNAV/VNAV	LNAV	Circling <sup>a</sup> <sub>b</sub>	Circling <sup>a</sup>
A	530 (521) 1 1/4 sm	560 (551) 1 sm	600 (591) 1 1/4 sm	600 (591) 1 sm
B		560 (551) 1 1/4 sm	610 (600) 1 1/2 sm	610 (600) 1 1/2 sm
C	530 (521) 1 1/4 sm	560 (551) 1 1/4 sm	610 (600) 1 1/2 sm	610 (600) 1 1/2 sm
D		560 (551) 1 1/4 sm	710 (700) 2 1/2 sm	710 (700) 2 1/2 sm

THR	3.0° ALT	LDA 2982x61 9783x200ft
08	3000	P 3° G MALSR
9.2	3000	
7	2310	
6	1990	
5	1670	
4	1350	
3	1030	
2	710	
1.6	560	

<sup>a</sup> Authorisation required, otherwise

<sup>b</sup> LNAV/VNAV only

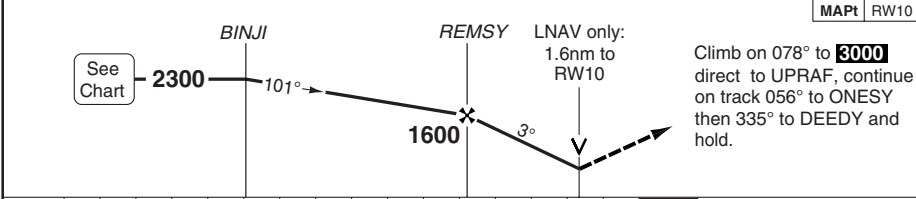
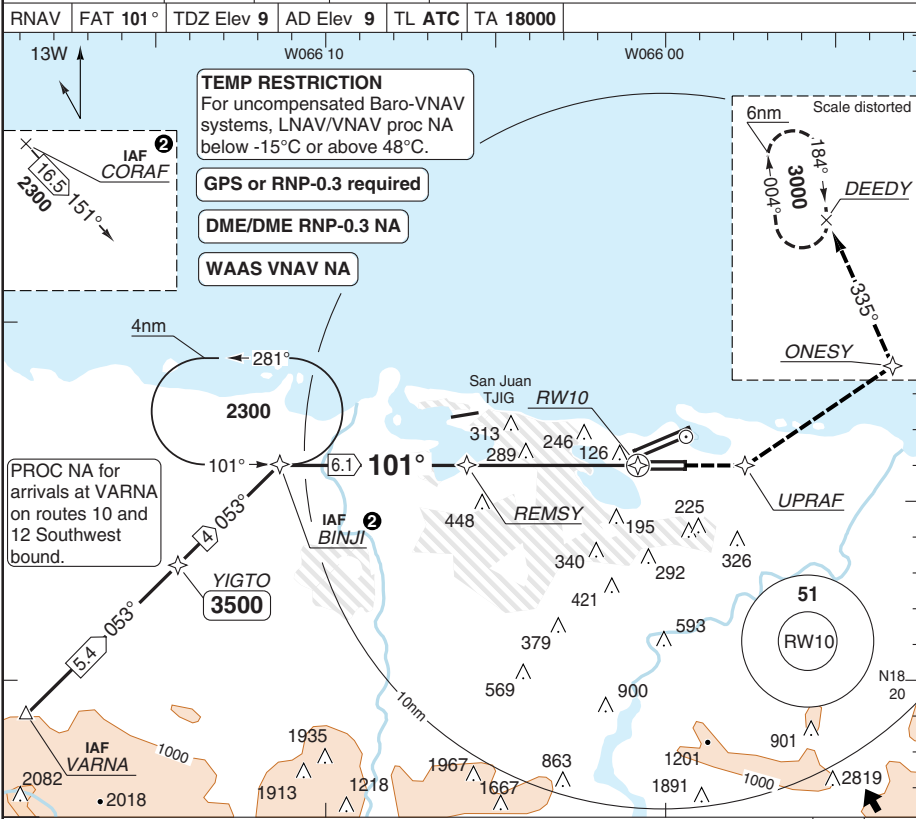
GS	80	100	120	140	160
ROD 3.0°	430	540	650	750	860

Change: Var, waypoints, LDA, AD elev.

# RNAV (GPS) RWY 10

## Luis Munoz Marin INTL SAN JUAN

San Juan APP <b>120.9 N, E</b> <b>119.4 W, SW</b>	TWR <b>132.05</b>	GND <b>121.9</b>	ATIS (D) <b>125.8</b>
RNAV	FAT <b>101°</b>	TDZ Elev <b>9</b>	AD Elev <b>9</b>
TL <b>ATC</b>	TA <b>18000</b>		



nm						TCH 50					
ACFT	LNNAV/VNAV	LNNAV	Circling <b>a</b> <b>b</b>	Circling <b>a</b>		THR	3.0° ALT	LDA 2443x46 8016x150 P 3° G NALS			
A	550 (540) 2 sm	560 (551) 1sm	600 (591) 2sm	600 (591) 1sm		10	2300				
B		560 (551) 1½sm	610 (600) 2sm	610 (600) 1½sm		7	1990				
C		560 (551) 1¾sm	710 (700) 2½sm	710 (700) 2½sm		6	1670				
D		560 (551) 1¾sm	710 (700) 2½sm	710 (700) 2½sm		5	1350				
						4	1030				
						3	710				
						2	560				
						1.6					

**a** Authorisation required, otherwise  
**1010 (1000) 3sm**

**b** LNAV/VNAV only

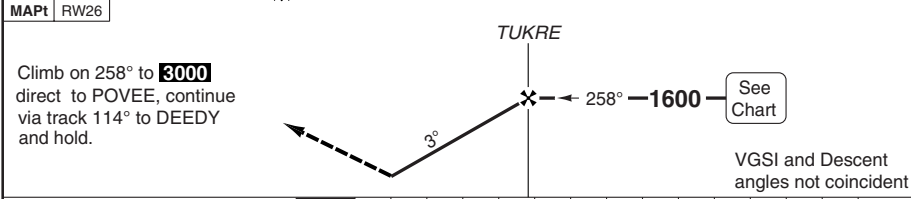
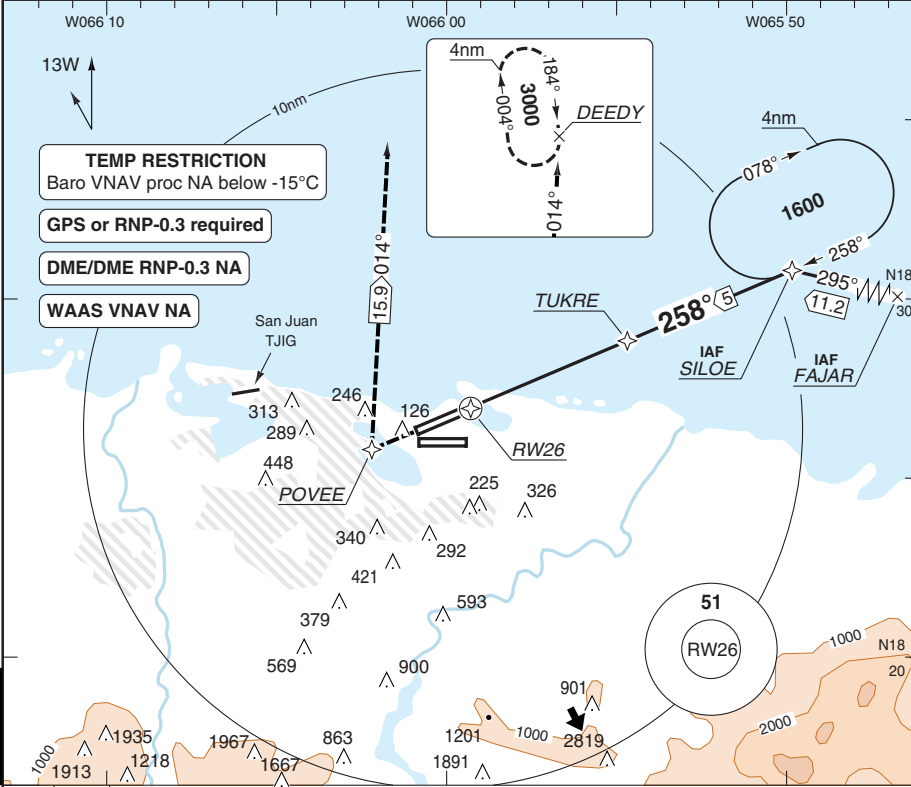
© Navtech - tjsj07iaip00

# RNAV (GPS) RWY 26

Luis Munoz Marin INTL **SAN JUAN**

San Juan APP <b>120.9 N, E</b> <b>119.4 W, SW</b>	TWR <b>132.05</b>	GND <b>121.9</b>	ATIS (D) <b>125.8</b>
---	----------------------	---------------------	--------------------------

RNAV	FAT <b>258°</b>	TDZ Elev <b>7</b>	AD Elev <b>9</b>	TL ATC	TA <b>18000</b>
------	-----------------	-------------------	------------------	--------	-----------------



TCH 55

ACFT	LNAV/VNAV	LNAV	Circling <sup>a</sup>	THR	ALT	LDA 2982x61 9783x200ft
A	<b>360</b> (353) 1 1/4 sm	<b>400</b> (393) 1 sm	<b>560</b> (551) 1 1/4 sm	<b>26</b>	<b>1600</b>	<b>G</b>
B		<b>400</b> (393) 1 1/2 sm	<b>610</b> (600) 1 1/2 sm	<b>4.8</b>	<b>1350</b>	
C		<b>400</b> (393) 1 1/4 sm	<b>710</b> (700) 2 1/2 sm	<b>3</b>	<b>1030</b>	
D				<b>2</b>	<b>700</b>	
				<b>1.1</b>	<b>400</b>	

<sup>a</sup> Authorisation required, otherwise **1010** (1000) 3sm

GS	80	100	120	140	160
ROD 3.0°	430	540	650	760	860

© Navtech - tjsj08iaip00

NALS

Change: Var, AD elev.

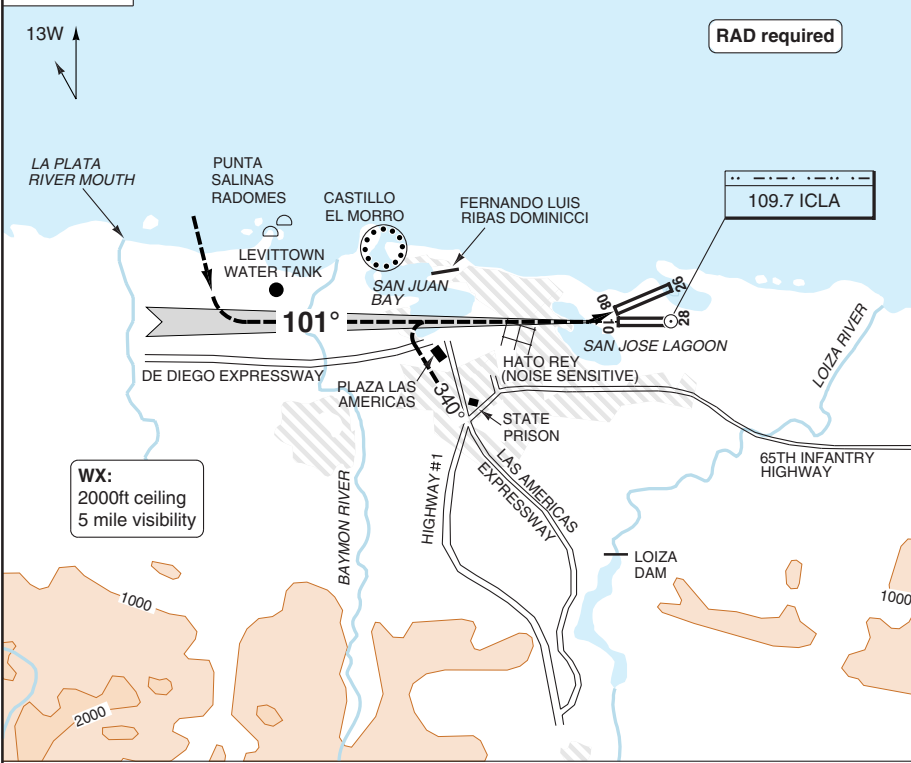
# VISUAL RWY 08 LAGOON

# Luis Munoz Marin INTL SAN JUAN

San Juan APP <b>120.9</b> N, E <b>119.4</b> W, SW	TWR <b>132.05</b>	GND <b>121.9</b>	ATIS (D) <b>125.8</b>
---	----------------------	---------------------	--------------------------

TDZ Elev <b>9</b>	AD Elev <b>9</b>	TL <b>ATC</b>	TA <b>18000</b>
-------------------	------------------	---------------	-----------------

Chart not to scale



50 - 9

## LAGOON VISUAL APCH RWY 08 PROCEDURE NA AT NIGHT

When cleared for the Lagoon Visual RWY 08 APCH ACFT will proceed visually to intercept and fly the RWY 10 final approach course until the west end of the San Jose Lagoon, then make left turn to land RWY 08.

© Navtech - tjsj09iaip00

Change: Var, AD elev.

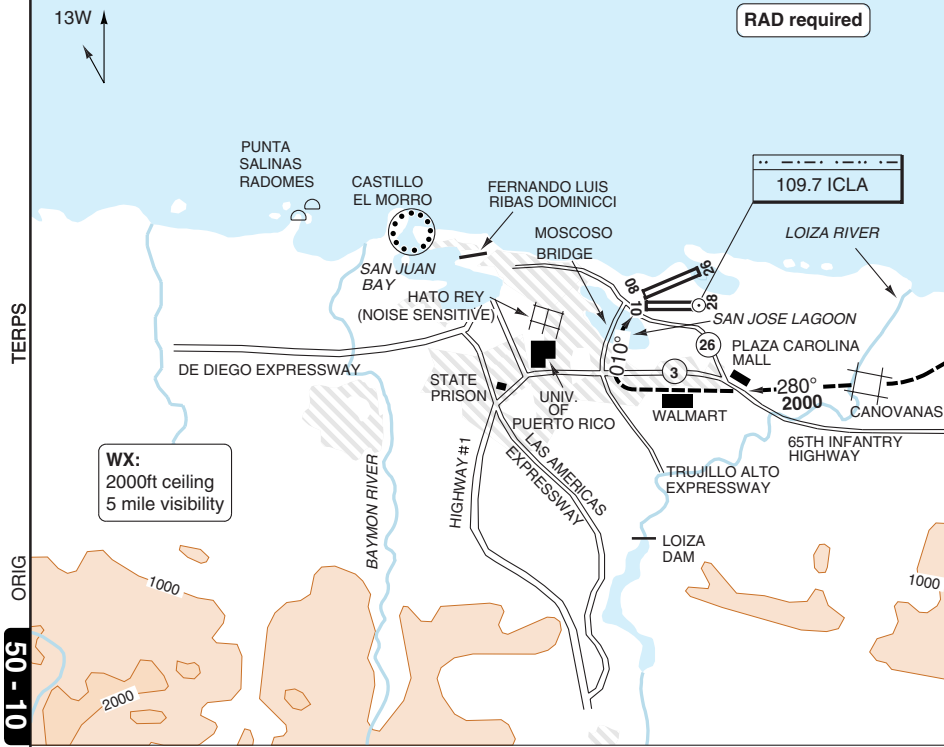
# VISUAL RWY 10 BRIDGE

## Luis Munoz Marin INTL SAN JUAN

San Juan APP <b>120.9</b> N, E <b>119.4</b> W, SW	TWR <b>132.05</b>	GND <b>121.9</b>	ATIS (D) <b>125.8</b>
---	----------------------	---------------------	--------------------------

TDZ Elev <b>9</b>	AD Elev <b>9</b>	TL <b>ATC</b>	TA <b>18000</b>
-------------------	------------------	---------------	-----------------

Chart not to scale



**BRIDGE VISUAL APCH RWY 10**  
**PROCEDURE NA AT NIGHT**  
**NA FOR JETS OR FOUR ENGINE PROPS**

When cleared for the Bridge Visual RWY 10 APCH ACFT will  
 base East of the Moscoso Bridge.

## JAR-OPS Minima

Luis Munoz Marin INTL **SAN JUAN**

The following Minima is for public transport aircraft and is based on FAA criteria and conforms to JAR-OPS1 regulations.

STRAIGHT-IN APPROACH		C				D			
Rwy	Procedure	DA/ MDA QNH Ft	HAT QFE Ft	RVR / Vis Ft/SM	RVR / Vis No ALS Ft/SM	DA/ MDA QNH Ft	HAT QFE Ft	RVR / Vis Ft/SM	RVR / Vis No ALS Ft/SM
08	ILS/DME	320	310	1/2	1	320	310	1/2	1
08	LOC/DME	560	560	1	1 1/2	560	560	1 1/4	1 3/4
08	VOR	560	560	1	1 1/2	560	560	1 1/4	1 3/4
08	NDB	600	600	1	1 1/2	600	600	1 1/2	1 3/4
08	RNAV (L/VNAV)(1)	530	530	1 1/4	1 3/4	530	530	1 1/4	1 3/4
08	RNAV (LNAV)(1)	560	560	1	1 1/2	560	560	1 1/4	1 3/4
10	ILS	250	240	3/4	N/A	250	240	3/4	N/A
10	LOC	600	600	1 1/2	N/A	600	600	1 3/4	N/A
10	VOR	560	560	1 1/2	N/A	560	560	1 3/4	N/A
10	RNAV (L/VNAV)(1)	550	540	2	N/A	550	540	2	N/A
10	RNAV (LNAV)(1)	560	560	1 1/2	N/A	560	560	1 3/4	N/A
26	VOR	440	440	1 1/4	N/A	440	440	1 1/2	N/A
26	RNAV (L/VNAV)(1)	360	360	1 1/4	N/A	360	360	1 1/4	N/A
26	RNAV (LNAV)(1)	400	400	1 1/4	N/A	400	400	1 1/4	N/A

Notes:

(1) WAAS VNAV NA.

CIRCLING		C			D		
Rwy	Procedure	MDA QNH Ft	HAA QFE Ft	Vis Ft/SM	MDA QNH Ft	HAA QFE Ft	Vis Ft/SM
26	RNAV	610	600	1 1/2	710	700	2 1/2
	All other procedures	610	600	1 1/2	710	700	2 1/2

Notes:

## JAR-OPS Minima

Luis Munoz Marin INTL **SAN JUAN**

The following Minima is for public transport aircraft and is based on FAA criteria and conforms to JAR-OPS1 regulations.

TAKE-OFF		C		D	
Lower than Standard		RVR (Ft)	Vis (SM)	RVR (Ft)	Vis (SM)
Rwy	Facilities				
All	REDL(H) or RCLL or RCLM (1)	1600	1/4	1600	1/4
Standard		RVR (Ft)	Vis (SM)	RVR (Ft)	Vis (SM)
All	<b>3 and 4 engines</b>	2400	1/2	2400	1/2
	<b>1 and 2 engines</b>	5000	1	5000	1

Notes:

- (1) TDZ RVR controlling, if not substitute Mid point RVR. Vis 1/4sm permitted when adequate Vis. ref. available.

ALTERNATE		C		D	
Rwy	Procedure	Ceil (Ft)	Vis (SM)	Ceil (Ft)	Vis (SM)
All (1)	Std: Precision Approach	600	2	600	2
All (1)	Std: Non-Prec. Approach	800	2	800	2

Notes:

- (1) 26 RNAV procs NA.

## JAR-OPS Minima

Luis Munoz Marin INTL **SAN JUAN**

The following Minima is for public transport aircraft and is based on FAA criteria and conforms to JAR-OPS1 regulations.

STRAIGHT-IN APPROACH		A				B			
Rwy	Procedure	DA/ MDA QNH Ft	HAT QFE Ft	RVR / Vis Ft/SM	RVR / Vis No ALS Ft/SM	DA/ MDA QNH Ft	HAT QFE Ft	RVR / Vis Ft/SM	RVR / Vis No ALS Ft/SM
08	ILS/DME	320	310	1/2	1	320	310	1/2	1
08	LOC/DME	560	560	3/4	1	560	560	3/4	1
08	VOR	560	560	3/4	1	560	560	3/4	1
08	NDB	600	600	3/4	1	600	600	3/4	1
08	RNAV (L/VNAV)(1)	530	530	1 1/4	1 3/4	530	530	1 1/4	1 3/4
08	RNAV (LNAV)(1)	560	560	3/4	1	560	560	3/4	1
10	ILS	250	240	3/4	N/A	250	240	3/4	N/A
10	LOC	600	600	1	N/A	600	600	1	N/A
10	VOR	560	560	1	N/A	560	560	1	N/A
10	RNAV (L/VNAV)(1)	550	540	2	N/A	550	540	2	N/A
10	RNAV (LNAV)(1)	560	560	1	N/A	560	560	1	N/A
26	VOR	440	440	1	N/A	440	440	1	N/A
26	RNAV (L/VNAV)(1)	360	360	1 1/4	N/A	360	360	1 1/4	N/A
26	RNAV (LNAV)(1)	400	400	1	N/A	400	400	1	N/A

Notes:

(1) WAAS VNAV NA.

CIRCLING		A			B		
Rwy	Procedure	MDA QNH Ft	HAA QFE Ft	Vis Ft/SM	MDA QNH Ft	HAA QFE Ft	Vis Ft/SM
26	RNAV	560	560	1 1/4	560	560	1 1/4
	All other procedures	600	600	1	600	600	1

Notes:

## JAR-OPS Minima

Luis Munoz Marin INTL **SAN JUAN**

The following Minima is for public transport aircraft and is based on FAA criteria and conforms to JAR-OPS1 regulations.

TAKE-OFF		A		B	
Lower than Standard		RVR (Ft)	Vis (SM)	RVR (Ft)	Vis (SM)
Rwy	Facilities				
All	REDL(H) or RCLL or RCLM (1)	1600	1/4	1600	1/4
Standard		RVR (Ft)	Vis (SM)	RVR (Ft)	Vis (SM)
All	<b>3 and 4 engines</b>	2400	1/2	2400	1/2
	<b>1 and 2 engines</b>	5000	1	5000	1

Notes:

- (1) TDZ RVR controlling, if not substitute Mid point RVR. Vis 1/4sm permitted when adequate Vis. ref. available.

ALTERNATE		A		B	
Rwy	Procedure	Ceil (Ft)	Vis (SM)	Ceil (Ft)	Vis (SM)
All (1)	Std: Precision Approach	600	2	600	2
All (1)	Std: Non-Prec. Approach	800	2	800	2

Notes:

- (1) 26 RNAV procs NA.