

Airport information:

Country: Martinique

City: MARTINI QUE

Coordinates: N 14° 35.5', W 060° 59.8'

Elevation: 16

Customs: Customs

Fuel: 100LL, Jet A1

RFF: CAT 7 0300-1700, CAT 9 1700-0300

hours: H24

Runways:

Runway 10

Takeoff length: 3000, Landing length: 3000

Runway 28

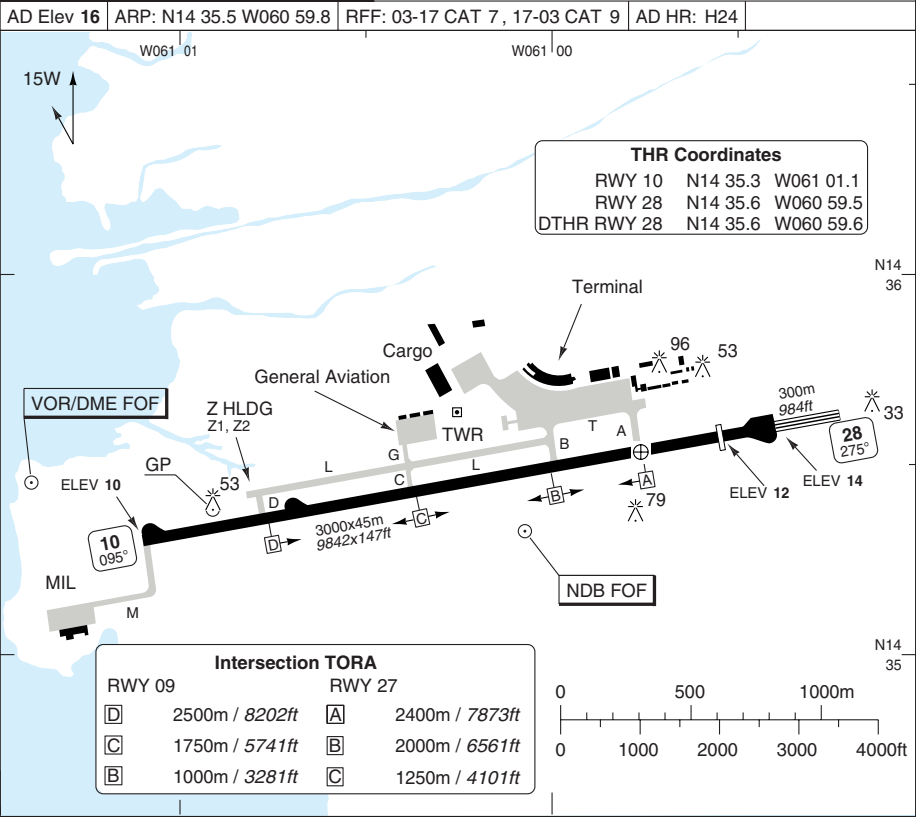
Takeoff length: 3000, Landing length: 2750

AERODROME

Aime Cesaire **MARTINIQUE**

10 - 1

Martinique GND 121.9	TWR 118.5	ATIS 127.85	
AD Elev 16	ARP: N14 35.5 W060 59.8	RFF: 03-17 CAT 7, 17-03 CAT 9	AD HR: H24



Intersection TORA			
RWY 09		RWY 27	
D	2500m / 8202ft	A	2400m / 7873ft
C	1750m / 5741ft	B	2000m / 6561ft
B	1000m / 3281ft	C	1250m / 4101ft

RWY	Slope	TORA m/ft	LDA m/ft	ALS	REDL	Additional
10	0	3000 / 9842	3000 / 9842	-	H ①	P 3° (64)
28	0	3000 / 9842	2750 / 9022	-	H ①	P 3.5° (70)

① White

EU OPS TAKE OFF MINIMA

RWY	Facilities	RVR A B C D
10/28	RCL (day only) or RCL + REDL	550m

© Navitech - tfff01laorg0

Change: RFF.

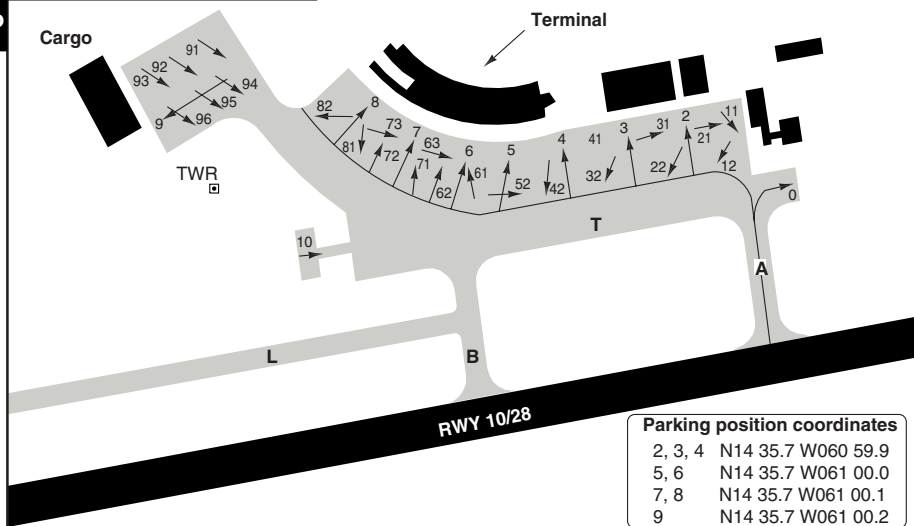
THIS CHART IS A PART OF NAVIGRAPH NDAC AND IS INTENDED FOR FLIGHT SIMULATION USE ONLY

AERODROME

Aime Cesaire **MARTINIQUE**

Martinique GND 121.9	TWR 118.5	ATIS 127.85
-------------------------	--------------	----------------

10 - 2



Parking position coordinates

2, 3, 4	N14 35.7 W060 59.9
5, 6	N14 35.7 W061 00.0
7, 8	N14 35.7 W061 00.1
9	N14 35.7 W061 00.2

GENERAL INFORMATION

1. NIGHT FLIGHT RESTRICTION

At night visual APCH is prohibited within 25nm in sector R318-006 FOF.

2. NOISE ABATEMENT PROC ARR

2.1 Avoid overflying the FORT DE FRANCE-SCHOELCHER sector below 3000ft.

Avoid overflying the towns of Saint Esprit, Ducos and Lamentin below 3000ft.

2.2 Avoid using engines as a power supply source during stops. The use of ground power or APU is preferred.

3. NOISE ABATEMENT PROC DEP

3.1 The scheduled TKOF and DEP routes should be followed (according to the operational measures specific to each ACFT), in order to reach the 3000ft ALT as soon as possible.

3.2 Pilots must apply the following initial climbing procedures:

- Take-off
- Configuration and climbing speed with maximum slope up to 1500ft.
- At 1500ft, reduction to normal climb rate.
- At 3000ft gradual acceleration up to enroute climbing speed with flap retraction according to the usual procedure.

4. WARNING

- 4.1 Birds on and in vicinity of AD.
- 4.2 Aerial dusting all over Martinique. Caution advised east of R151/331 FOF.

5. TRAFFIC NOTE

Avoid overflying the towns Fort de France and Ducos, Sara oil refinery, Ducos jail and the hospital La Meynard at low altitude. Avoid overflying the military area south of the RWY and the city north of the RWY.

6. NAV RESTRICTION

VOR/DME FOF unreliable within 326° - 352° below 6000ft beyond 6nm.

7. TWY RESTRICTION

TWY C width 12.5m/41ft.

8. RWY RESTRICTION

Turn-around area restricted to ACFT with a turn radius less than 40m/131ft.

9. OMNIDIRECTIONAL DEP PROCEDURE

RWY 10

MNM CLIMB GRADIENT

6.9% to 2000ft, 7.1% to the enroute safety ALT. Climb on 095°. At 2000ft direct climb-out.

Significant OBST:

Tree 216ft 119°/934m/3064ft from DER.

Tree 847ft 081°/4944m/16220ft from DER.

RWY 28

N sector (275° - 095°)

MNM CLIMB GRADIENT: 8.24%.

Climb on 275°. At 1500ft direct climb-out.

Significant OBST:

Piton Lacroix 3924ft 325°/10nm from ARP.

S sector (095° - 275°)

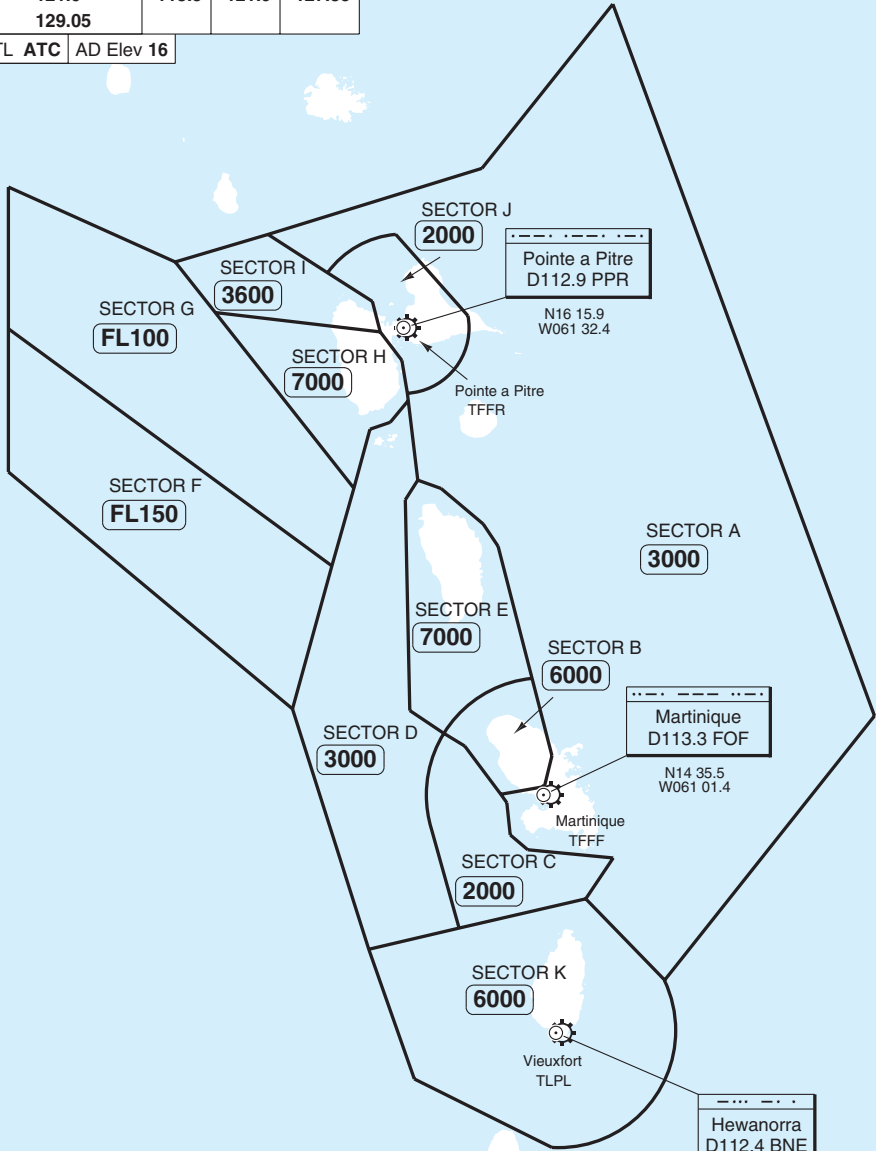
Climb on 275°. At 1500ft direct climb-out.

RADAR Minimum Altitudes

Aime Cesaire MARTINIQUE

Martinique APP	TWR	GND	ATIS
121.0	118.5	121.9	127.85
129.05			

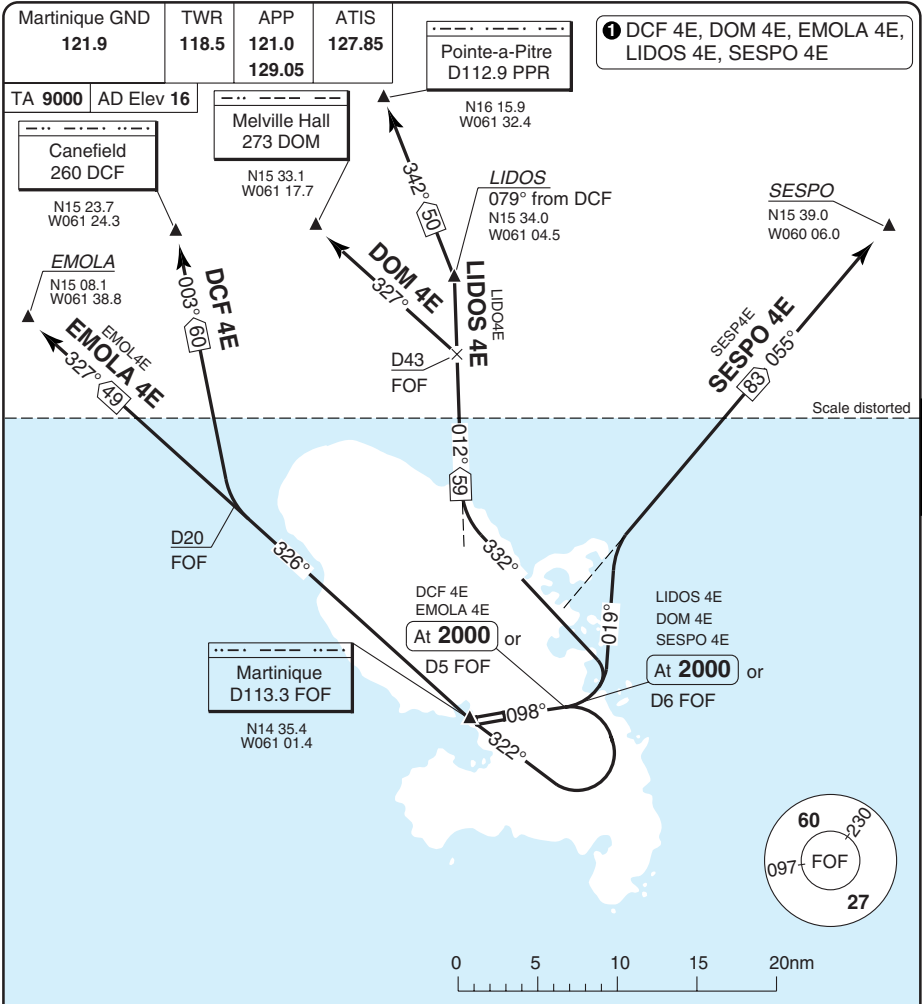
TL ATC AD Elev 16



Change: New spec.

THIS CHART IS A PART OF NAVIGRAPH NDAC AND IS INTENDED FOR FLIGHT SIMULATION USE ONLY

SID RWY 10 1



MNM CLIMB GRADIENT: BTN R050-277 FOF: 6.9% up to 3000, BTN R277-050 FOF: 6.9% up to 6000

SID	MNM Climb	Routeing
DCF 4E		Climb on R098 FOF to 2000 or D5 FOF - turn right - Intcpt 322°/R142 FOF - FOF - R326 FOF - at D20 FOF - 003° to DCF - DCF.
DOM 4E		Climb on R098 FOF to 2000 or D6 FOF - turn left - 332° - Intcpt R012 FOF - D43 FOF - 327° - DOM.
EMOLA 4E		Climb on R098 FOF to 2000 or D5 FOF - turn right - Intcpt 322°/R142 FOF - FOF - R326 FOF - EMOLA.
LIDOS 4E		Climb on R098 FOF to 2000 or D6 FOF - turn left - 332° - Intcpt R012 FOF - LIDOS - 342° - PPR.
SESP0 4E		Climb on R098 FOF to 2000 or D6 FOF - turn left - 019° - Intcpt R055 FOF - SESPO.
RADAR DEPARTURE	6.9% to 3000	Climb on 098°. Expect RAD vectors to join SID.

Change: LIDOS 4E.

© Navitech - tfff01daorg0

30 - 1

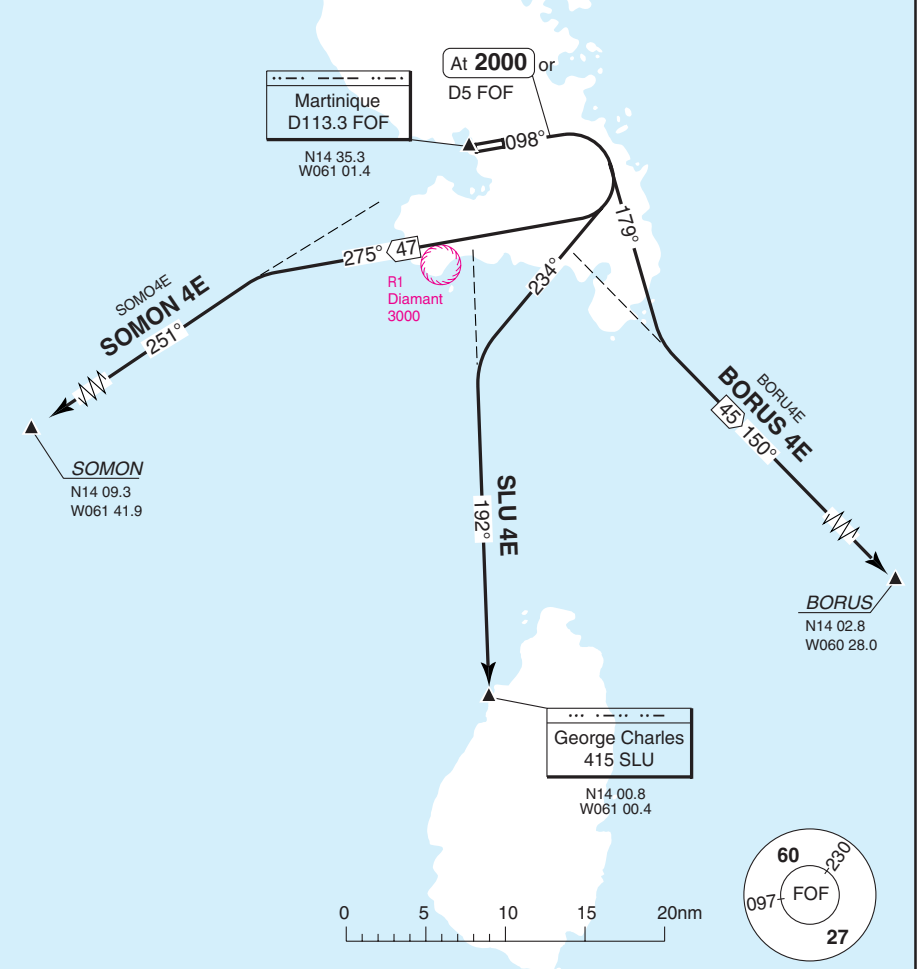
SID RWY 10 ①

Aime Cesaire **MARTINIQUE**

Martinique GND 121.9	TWR 118.5	APP 121.0 129.05	ATIS 127.85
-------------------------	--------------	------------------------	----------------

TA 9000 | AD Elev 16

① BORUS 4E, SLU 4E
SOMON 4E



MNM CLIMB GRADIENT: BTN R050-277 FOF: 6.9% up to 3000, BTN R277-050 FOF: 6.9% up to 6000

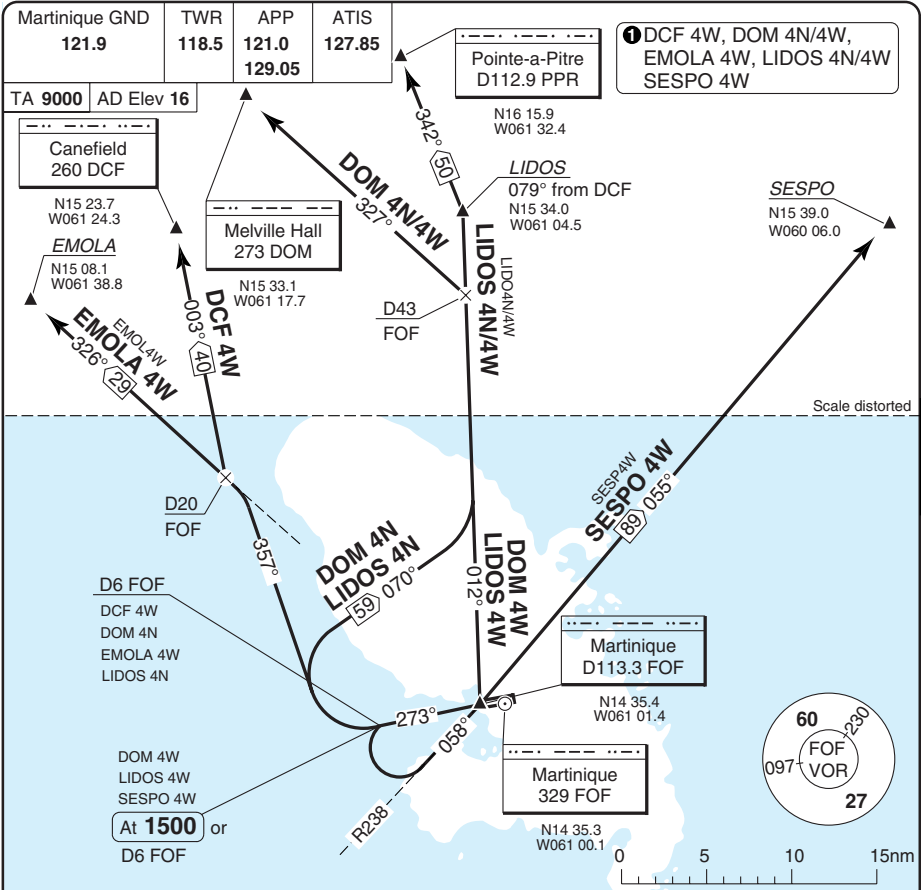
SID	MNM Climb	Routing
BORUS 4E		Climb on R098 FOF to 2000 or D5 FOF - turn right - 179° - Intcp R150 FOF - BORUS.
SLU 4E		Climb on R098 FOF to 2000 or D5 FOF - turn right - 234° - Intcp R192 FOF - SLU.
SOMON 4E		Climb on R098 FOF to 2000 or D5 FOF - turn right - 275° - Intcp R251 FOF - SOMON.
RADAR DEPARTURE	6.9% to 3000	Climb on 098°. Expect RAD vectors to join SID.

© NavTech - tfff02daorg0

Change: MT.

SID RWY 28

Aime Cesair MARTINIQUE



30 - 3

SPEED : MAX 220kt in turn after initial climb.

MNM CLIMB GRADIENT : BTN R050-277 FOF: 6.9% up to 3000, BTN R277-050 FOF: 6.9% up to 6000

SID	MNM Climb	Routing
DCF 4W	5.2%	Climb on R273 FOF to D6 FOF - turn right - 357° - Intcp R326 FOF - at D20 FOF - 003° to DCF - DCF.
DOM 4N	8.2%	Climb on R273 FOF to D6 FOF - turn right - 070° - Intcp R012 FOF - D43 FOF - DOM.
DOM 4W	4.2%	Climb on R273 FOF to 1500 or D6 FOF - turn left - 058°/R238 FOF - FOF - Intcp R012 FOF - D43 FOF - DOM.
EMOLA 4W	5.2%	Climb on R273 FOF to D6 FOF - turn right - 357° - Intcp R326 FOF - EMOLA.
LIDOS 4N	8.2%	Climb on R273 FOF to D6 FOF - turn right - 070° - Intcp R012 FOF - LIDOS - 342° - PPR.
LIDOS 4W	4.2%	Climb on R273 FOF to 1500 or D6 FOF - turn left - 058°/R238 FOF - FOF - Intcp R012 FOF - LIDOS - 342° - PPR.
SESPO 4W	4.2%	Climb on R273 FOF to 1500 or D6 FOF - turn left - Intcp 058°/R238 FOF - FOF - R055 FOF - SESPO.
RADAR DEPARTURE		Climb on 273° until passing 3000, expect RAD vectors to join SID.

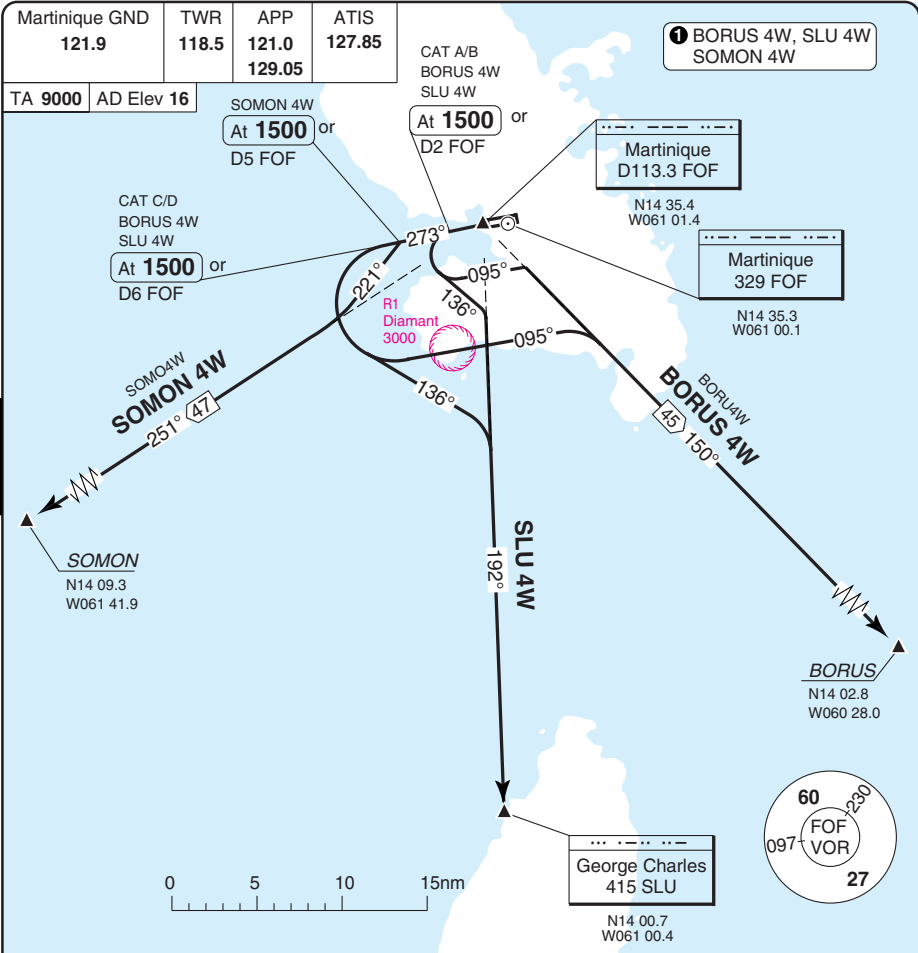
© Navtech - tfff03daorgo

Change: LIDOS 4N/4W.

THIS CHART IS A PART OF NAVIGRAPH NDAC AND IS INTENDED FOR FLIGHT SIMULATION USE ONLY

SID RWY 28 ¹

Aime Cesaire MARTINIQUE



SPEED (Except SOMON 4W): ² CAT A/B: MAX 175kt in the initial climb.
³ CAT C/D: MAX 220kt in the turn after the initial climb.
MNM CLIMB GRADIENT: BTN R050-277 FOF: 6.9% up to 3000, BTN R277-050 FOF: 6.9% up to 6000

SID	MNM Climb	Routeing
BORUS 4W ² (CAT A/B)	6.5%	Climb on R273 FOF to 1500 or D2 FOF - turn left - 095° - Intcp R150 FOF - BORUS.
BORUS 4W ³ (CAT C/D)	4.2%	Climb on R273 FOF to 1500 or D6 FOF - turn left - 095° - Intcp R150 FOF - BORUS.
SLU 4W ² (CAT A/B)	6.5%	Climb on R273 FOF to 1500 or D2 FOF - turn left - 136° - Intcp R192 FOF - SLU.
SLU 4W ³ (CAT C/D)	4.2%	Climb on R273 FOF to 1500 or D6 FOF - turn left - 136° - Intcp R192 FOF - SLU.
SOMON 4W	4.2%	Climb on R273 FOF to 1500 or D5 FOF - turn left - 221° - Intcp R251 FOF - SOMON.
RADAR DEPARTURE		Climb on 273° until passing 3000 , expect RAD vectors to join SID

Change: MT.

STAR DELTA, GOLF 1

Aime Cesaire MARTINIQUE

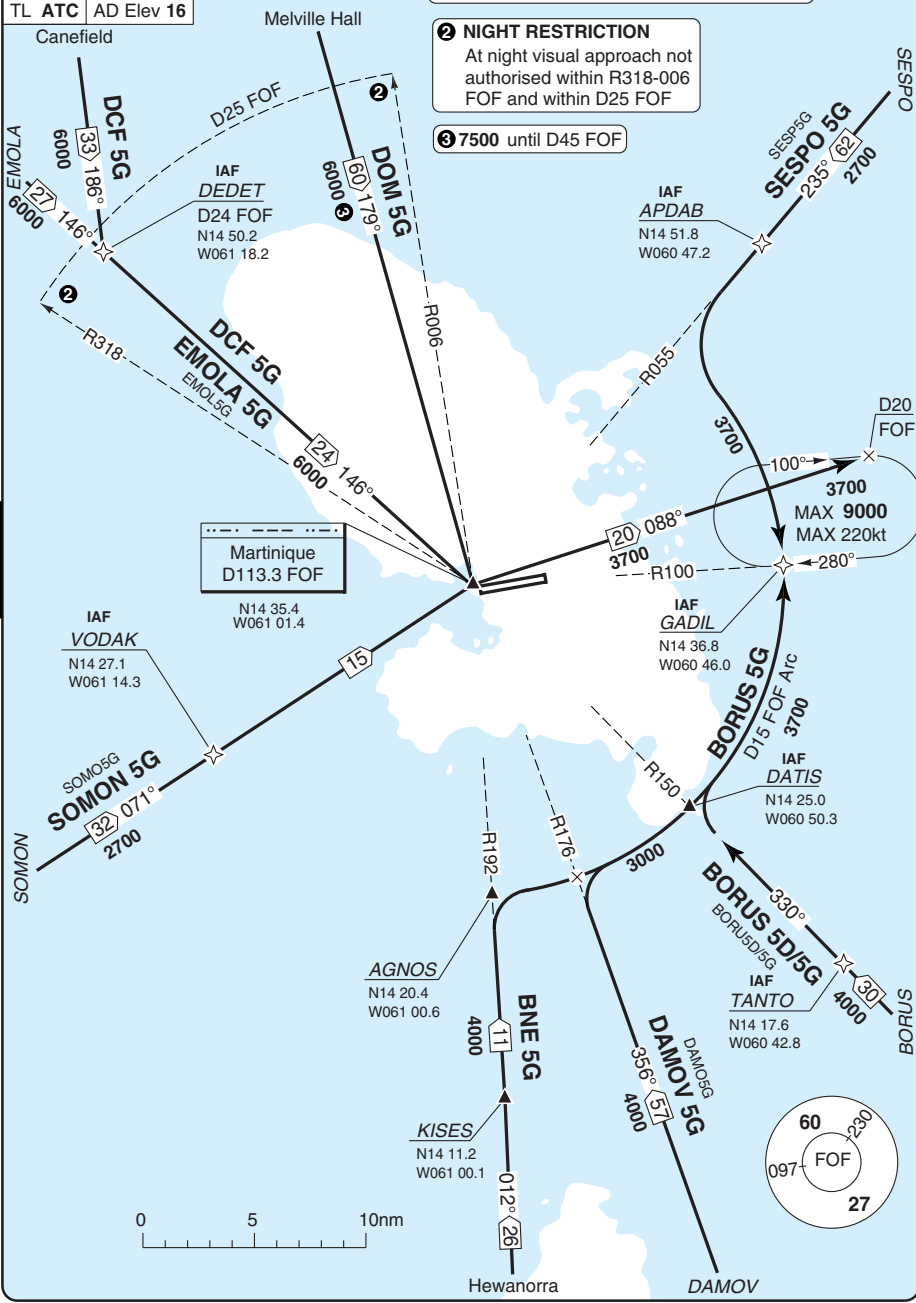
Martinique APP	TWR	GND	ATIS
121.0	118.5	121.9	127.85
129.05			

TL ATC AD Elev 16

① BNE 5G, BORUS 5D/5G, DAMOV 5G, DCF 5G, DOM 5G, EMOLA 5G, SESPO 5G, SOMON 5G

② NIGHT RESTRICTION
At night visual approach not authorised within R318-006 FOF and within D25 FOF

③ 7500 until D45 FOF



40 - 2

© Navtech - tfff02aaorg0

Change: Proc revised.

THIS CHART IS A PART OF NAVIGRAPH NDAC AND IS INTENDED FOR FLIGHT SIMULATION USE ONLY

STAR VOR FOF

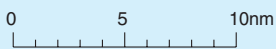
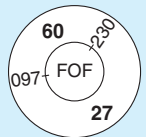
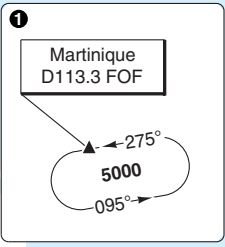
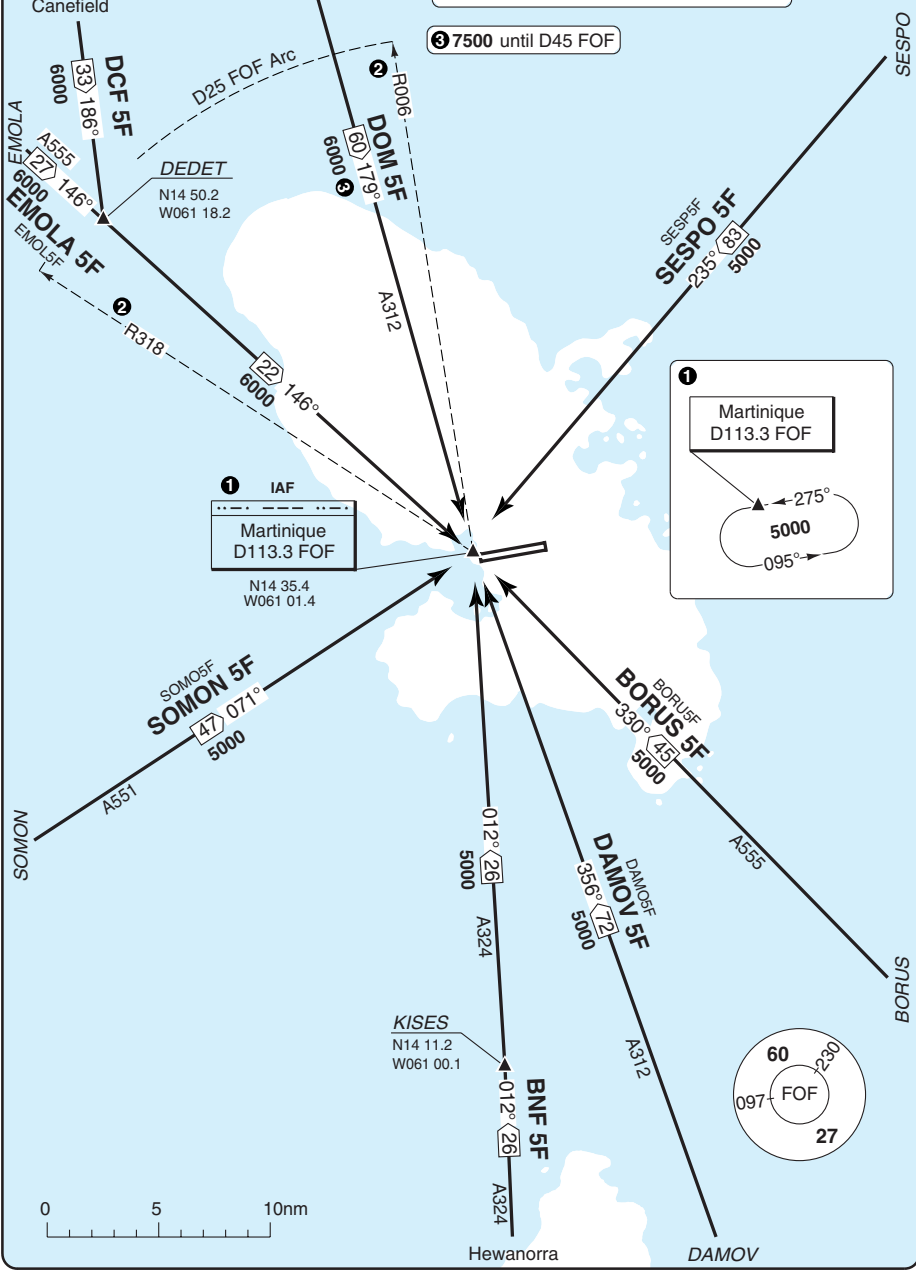
Aime Cesaire MARTINIQUE

Martinique APP	TWR	GND	ATIS
121.0	118.5	121.9	127.85
129.05			

TL ATC AD Elev 16

2 NIGHT RESTRICTION
At night visual approach not authorised within R318-RO06 FOF within D25 FOF

3 7500 until D45 FOF



© Navitech - tfff03aaorg0

40 - 3

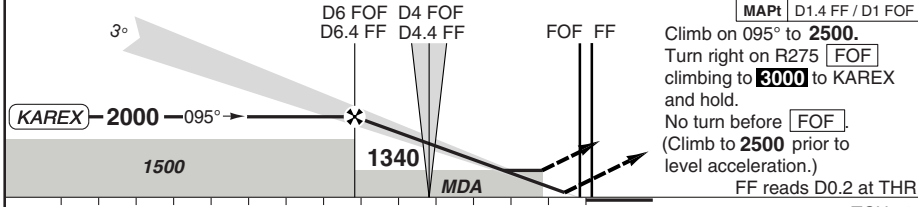
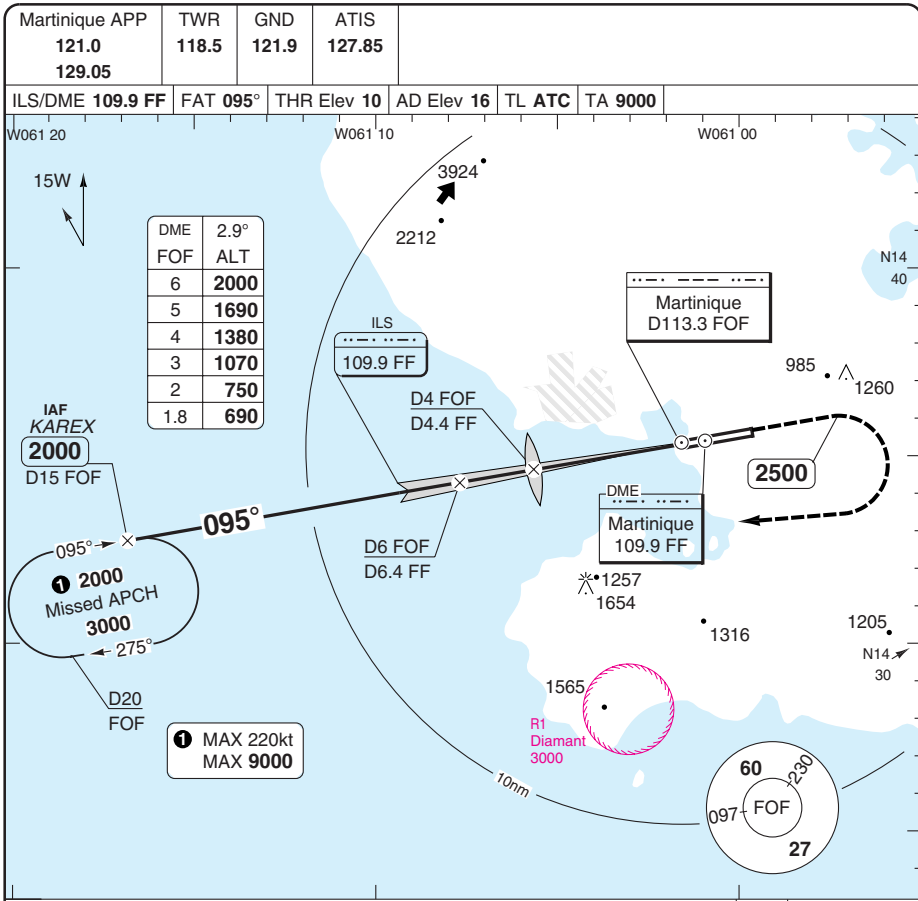
Reverse side blank

Change: Designators

THIS CHART IS A PART OF NAVIGRAPH NDAC AND IS INTENDED FOR FLIGHT SIMULATION USE ONLY

ILS RWY 10 KAREX

Aime Cesaire MARTINIQUE



ACFT	ILS 4%	ILS 3%	ILS 2.5%	LOC+DME		Circling ^a	DME FF	2.9° ALT	LDA 3000x45 9842x147ft P 3° (64)
				690 (680)	810 (790)				
A	210 (200) 1200m	280 (270) 1300m	470 (460) 1500m	690 (680) 1500m	810 (790) 1.5km	^a Day OPS only	6.4	2000	
B		300 (290) 1400m	480 (470) 1500m	710 (700) 1500m	1080 (1060) 1.6km		6	1880	
C		310 (300) 1400m	490 (480) 2200m	730 (720) 2400m	1670 (1650) 2.4km		5	1570	
D		330 (320) 1400m	500 (490) 2300m	750 (740) 2400m	2000 (1980) 3.6km		4	1250	
DL	210 (200) 1200m	390 (380) 1700m	510 (500) 2300m	GS	80 100 120 140 160	2.4	750	NALS	
			ROD 2.9°	420 530 630 740 840	2.2	690			
			FAF-MAPt	3:45 2:59 2:30 2:08 1:52					

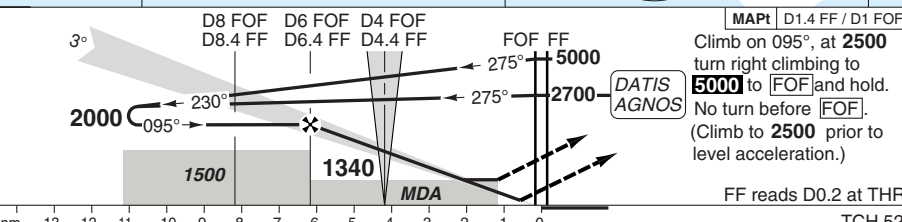
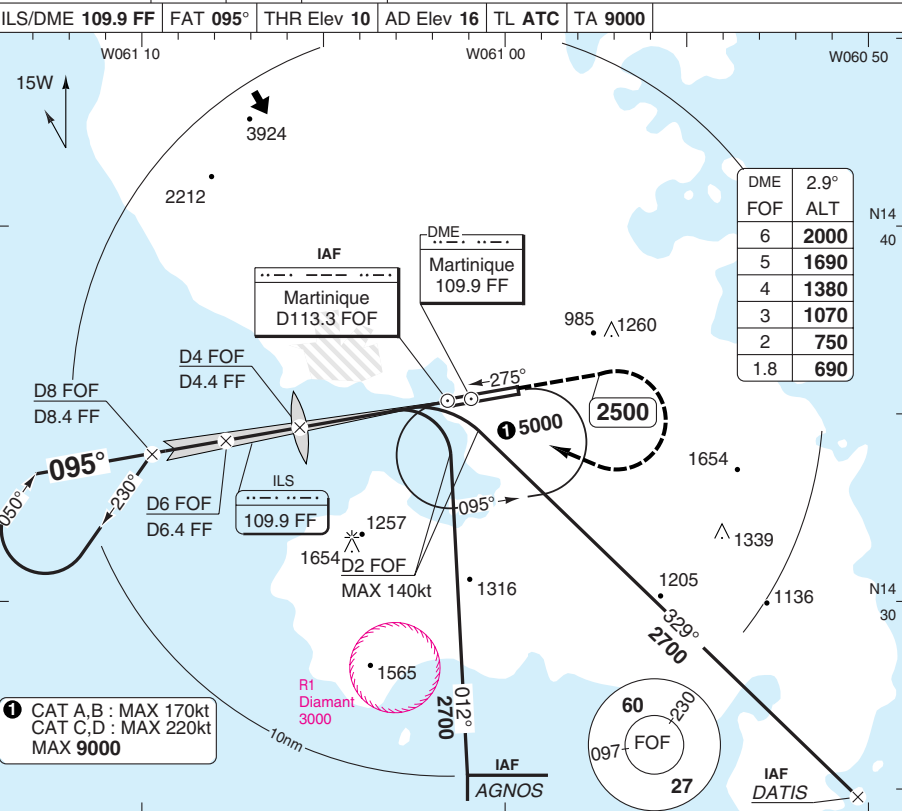
© Navtech - tfff01iaip00

50 - 1

ILS RWY 10 VOR

Aime Cesaire MARTINIQUE

Martinique APP 121.0 129.05	TWR 118.5	GND 121.9	ATIS 127.85
ILS/DME 109.9 FF	FAT 095°	THR Elev 10	AD Elev 16
TL ATC	TA 9000		



ACFT	ILS 4%	ILS 3%	ILS 2.5%	LOC+DME	Circling a	DME FF	2.9° ALT	LDA 3000x45 9842x147ft P 3° (64)
A	210 (200) 1200m	280 (270) 1300m	470 (460) 1500m	690 (680) 1500m	810 (790) 1.5km			
B		300 (290) 1400m	480 (470) 1500m	710 (700) 1500m	1080 (1060) 1.6km	6	1880	
C		310 (300) 1400m	490 (480) 2200m	730 (720) 2400m	1670 (1650) 2.4km	5	1570	
D		330 (320) 1400m	500 (490) 2300m	750 (740) 2400m	2000 (1980) 3.6km	4	1250	
DL	210 (200) 1200m	390 (380) 1700m	510 (500) 2300m	GS	80	2.4	750	NALS
			ROD 2.9°	420	530	2.2	690	
			FAF-MAPt	3:45	2:59			

a Day OPS only

© Navtech - tfff02iaip00

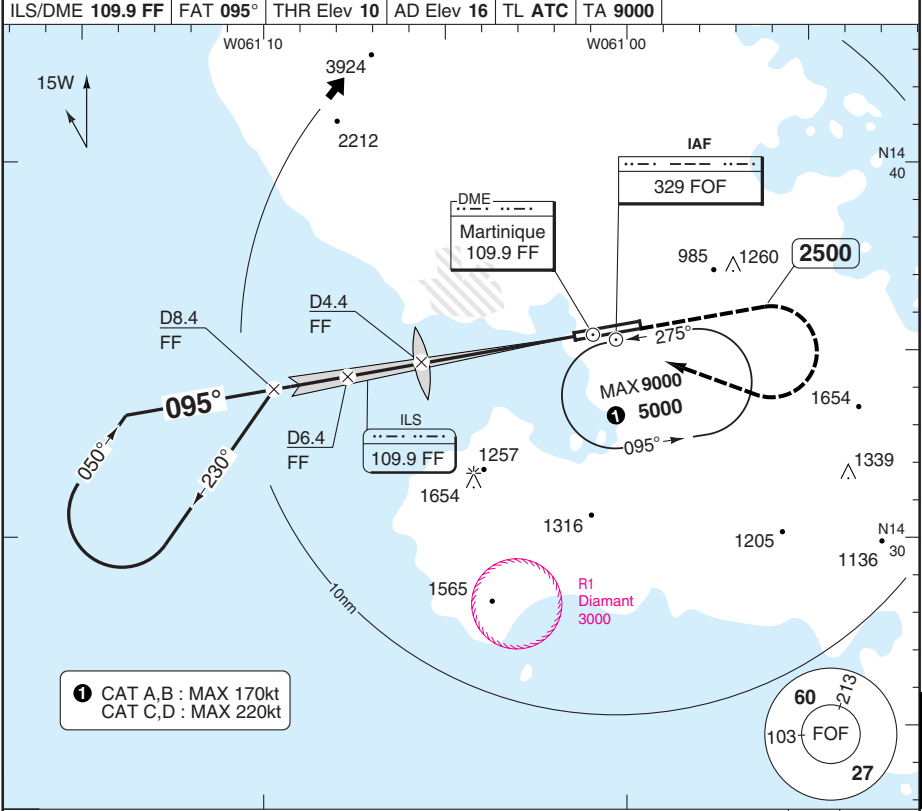
Change: PILKA removed, Minima.

THIS CHART IS A PART OF NAVIGRAPH NDAC AND IS INTENDED FOR FLIGHT SIMULATION USE ONLY

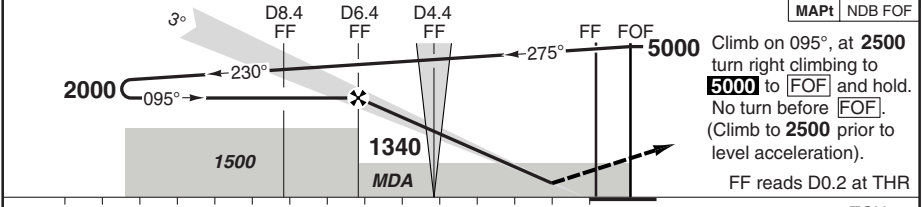
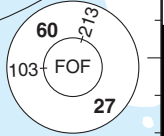
ILS RWY 10 NDB

Aime Cesaire MARTINIQUE

Martinique APP 121.0 129.05	TWR 118.5	GND 121.9	ATIS 127.85				
ILS/DME 109.9 FF	FAT 095°	THR Elev 10	AD Elev 16	TL ATC	TA 9000		



① CAT A,B : MAX 170kt
CAT C,D : MAX 220kt



nm	14	13	12	11	10	9	8	7	6	5	4	3	2	1	0	TCH 52						
ACFT																DME FF	2.9° ALT	LDA 3000x45 9842x147ft P 3° (64)				
A																6.4	2000	② Day OPS only				
B	210 (200) 1200m	ILS 4% 280 (270) 1300m		ILS 3% 300 (290) 1400m		ILS 2.5% 480 (470) 1500m		LOC+DME 710 (700) 1500m		Circling ⓐ 1080 (1060) 1.6km		5	1570									
C		310 (300) 1400m		490 (480) 2200m		730 (720) 2400m		1670 (1650) 2.4km		4	1250											
D		330 (320) 1400m		500 (490) 2300m		750 (740) 2400m		2000 (1980) 3.6km		3	940											
DL		210 (200) 1200m		390 (380) 1700m		510 (500) 2300m				2.4	750											
																2.2	690					
																GS	80	100	120	140	160	
																ROD 2.9°	420	530	630	740	840	

© Navtech - tfff03aiap00

50 - 3

NALS

Change: Minima.

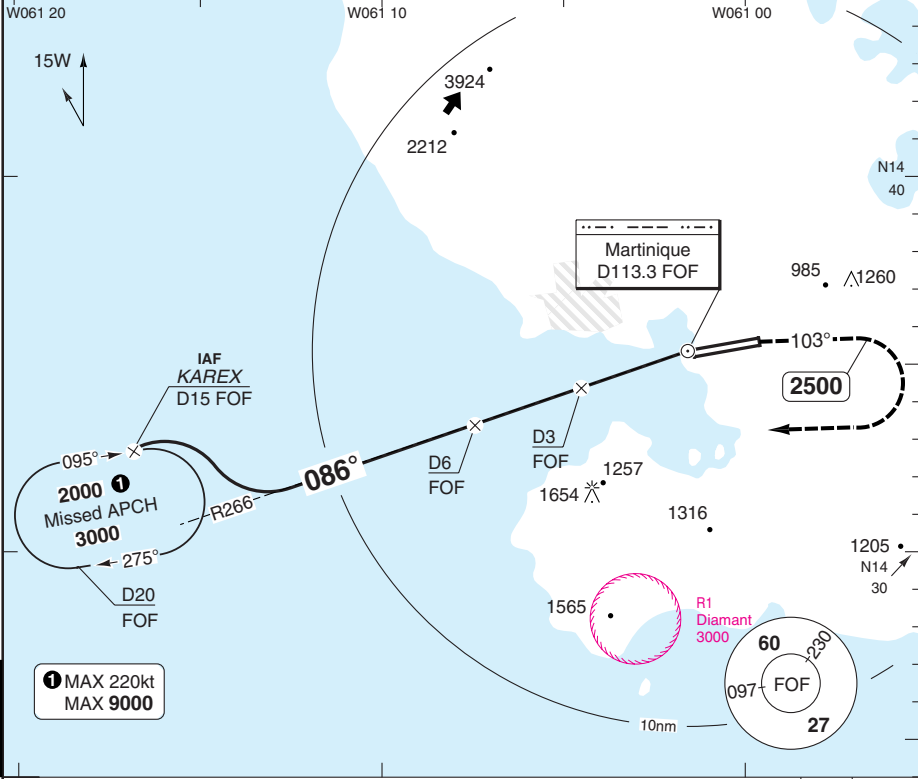
THIS CHART IS A PART OF NAVIGRAPH NDAC AND IS INTENDED FOR FLIGHT SIMULATION USE ONLY

VOR RWY 10 KAREX

Aime Cesaire MARTINIQUE

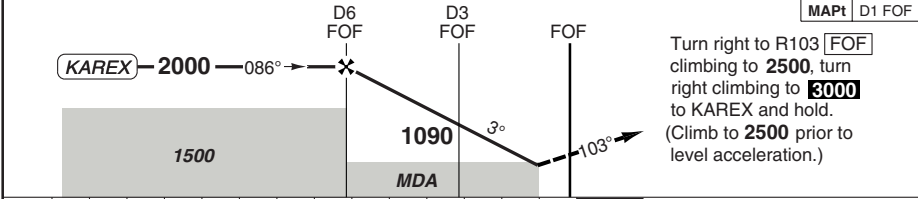
Martinique APP 121.0 129.05	TWR 118.5	GND 121.9	ATIS 127.85
--	---------------------	---------------------	-----------------------

VOR/DME 113.3 FOF	FAT 086°	THR Elev 10	AD Elev 16	TL ATC	TA 9000
--------------------------	-----------------	--------------------	-------------------	---------------	----------------



1 MAX 220kt
MAX 9000

PANS OPS
50 - 4



nm	14	13	12	11	10	9	8	7	6	5	4	3	2	1	0
ACFT	VOR+DME		Circling		Day OPS only										
A	580 (560) 1500m		800 (780) 1.5km												
B	600 (580) 1500m		1080 (1060) 1.6km												
C	620 (600) 2700m		1660 (1640) 2.4km												
D	640 (620) 2800m		2000 (1980) 3.6km												
GS	80	100	120	140	160										
ROD 3.0°	440	540	650	760	860										
FAF-MAPt	3:45	2:59	2:30	2:08	1:52										
DME FOF	5.8	5	4	3	2	1.6									
3.0° ALT	2000	1740	1420	1090	770	640									
LDA 3000x45 9842x147ft P 3° (64)															

© Navtech - tfff04iap00
EU OPS

NALS

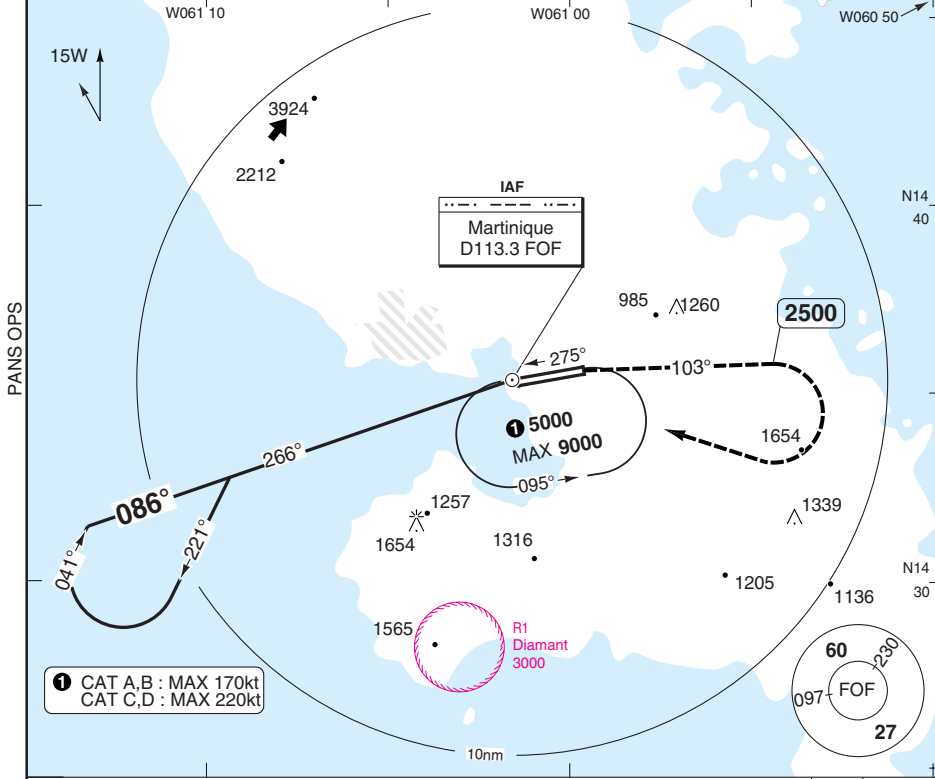
Change: Minima.

VOR RWY 10

Aime Cesaire MARTINIQUE

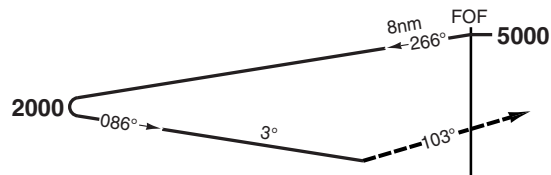
Martinique APP 121.0 129.05	TWR 118.5	GND 121.9	ATIS 127.85
---	---------------------	---------------------	-----------------------

VOR 113.3 FOF	FAT 086°	THR Elev 10	AD Elev 16	TL ATC	TA 9000
----------------------	-----------------	--------------------	-------------------	--------	----------------



PANS OPS

50 - 5



nm	13	12	11	10	9	8	7	6	5	4	3	2	1	0
ACFT	VOR	VOR a	Circling b	Circling a b										
A	740 (720) 3300m	740 (720) 3500m	800 (780) 3.3km	800 (780) 3.5km										
B	750 (740) 3400m	750 (740) 3600m	1080 (1060) 3.4km	1080 (1060) 3.6km										
C	780 (760) 3500m	780 (760) 3900m	1660 (1640) 3.5km	1660 (1640) 3.9km										
D	800 (780) 3600m	800 (780) 4000m	2000 (1980) 3.6km	2000 (1980) 4.0km										

a Non-CDFA
b Day OPS only

LDA 3000x45
9842x147ft
P 3° (64)

NALS

© Navtech - tfff05iaip00

Change: Var, MT, minima.

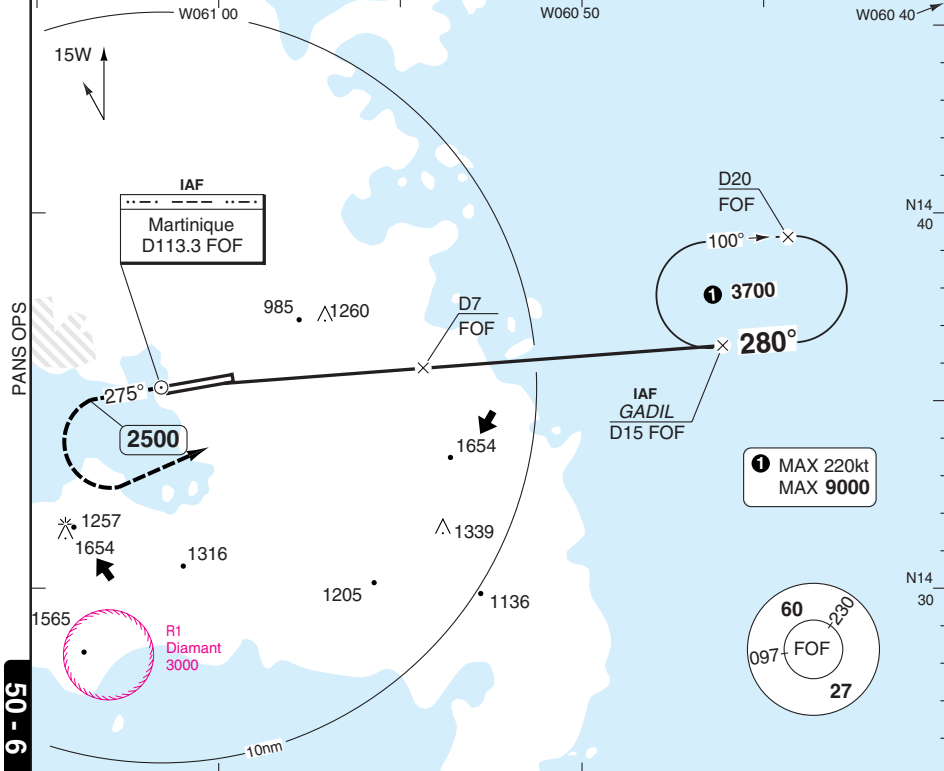
THIS CHART IS A PART OF NAVIGRAPH NDAC AND IS INTENDED FOR FLIGHT SIMULATION USE ONLY

VOR RWY 28 GADIL

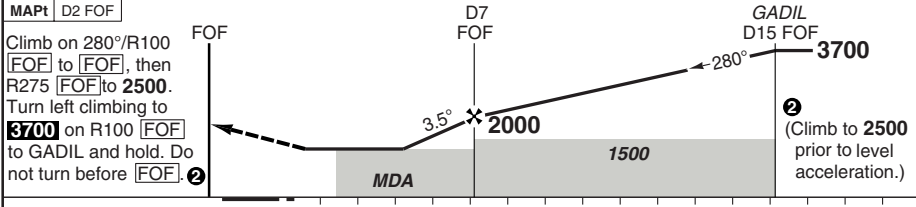
Aime Cesaire MARTINIQUE

Martinique APP 121.0 129.05	TWR 118.5	GND 121.9	ATIS 127.85
---	---------------------	---------------------	-----------------------

VOR/DME 113.3 FOF	FAT 280°	DTHR Elev 12	AD Elev 16	TL ATC	TA 9000
--------------------------	-----------------	---------------------	-------------------	---------------	----------------



50 - 6



ACFT	VOR+DME	Note: Circling NA	DME	3.4°	LDA 2750x45
A			FOF	ALT	9022x147ft
B	1390 (1380)		7	2000	P 3.5° (70)
C	5000m		6	1640	
D			5.3	1390	

GS	80	100	120	140	160
ROD 3.4°	490	620	740	860	980
FAF-MAPt	3:45	2:59	2:30	2:08	1:52

DME	3.4°	LDA 2750x45
FOF	ALT	9022x147ft
7	2000	P 3.5° (70)
6	1640	
5.3	1390	

NALS

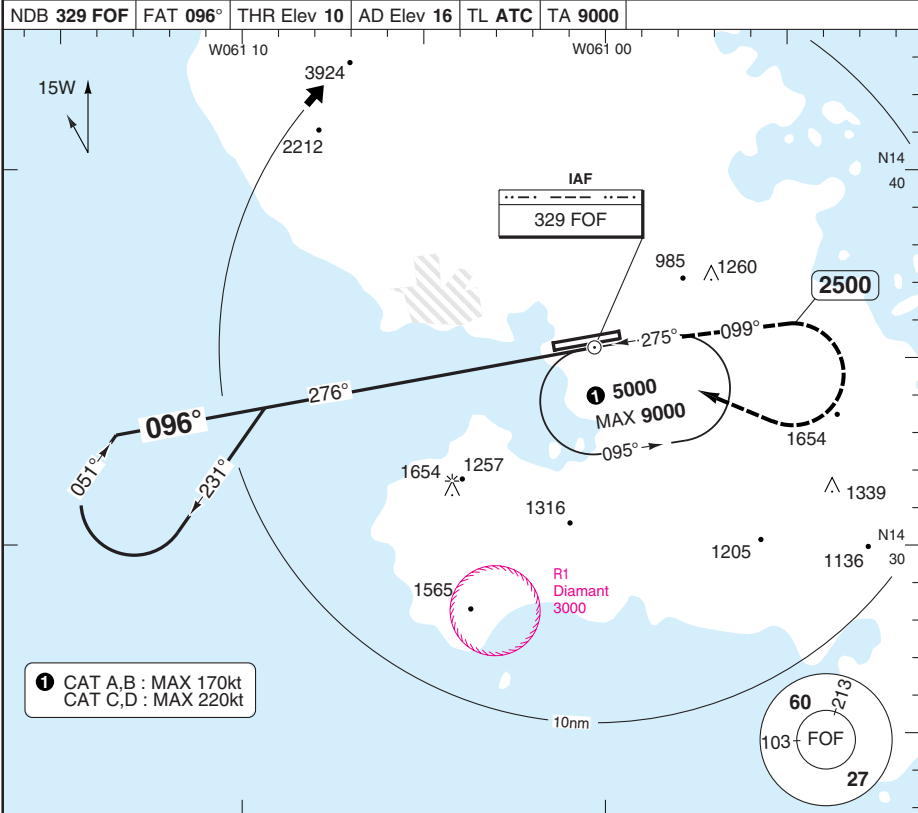
© Navitech - tfff06iaip00

Change: Var, MT.

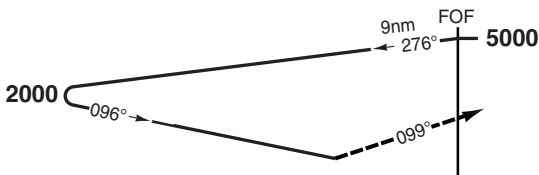
NDB RWY 10

Aime Cesaire MARTINIQUE

Martinique APP 121.0 129.05	TWR 118.5	GND 121.9	ATIS 127.85	
NDB 329 FOF	FAT 096°	THR Elev 10	AD Elev 16	TL ATC
TA 9000				



① CAT A,B : MAX 170kt
CAT C,D : MAX 220kt



Climb on 099° from [FOF], at 2500 turn right climbing to 5000 to [FOF] and hold. No turn before [FOF]. (Climb to 2500 prior to level acceleration.)

nm	12	11	10	9	8	7	6	5	4	3	2	1	0
ACFT	NDB	NDB ^a	Circling ^b	Circling ^{a b}									
A	1010 (990) 4500m	1010 (990) 4700m	1010 (990) 4.5km	1010 (990) 4.7km									
B	1020 (1010) 4900m	1020 (1010) 5000m	1080 (1060) 4.9km	1080 (1060) 5.0km									
C	1050 (1030) 4900m	1050 (1030) 5000m	1660 (1640) 4.9km	1660 (1640) 5.0km									
D	1070 (1050) 4900m	1070 (1050) 5000m	2000 (1980) 4.9km	2000 (1980) 5.0km									

^a Non-CDFA
^b Day OPS only

LDA 3000x45
9842x147ft
P 3° (64)

© Navtech · tfff07iaip00

NALS

50 - 7

Change: Var, MT, minima.

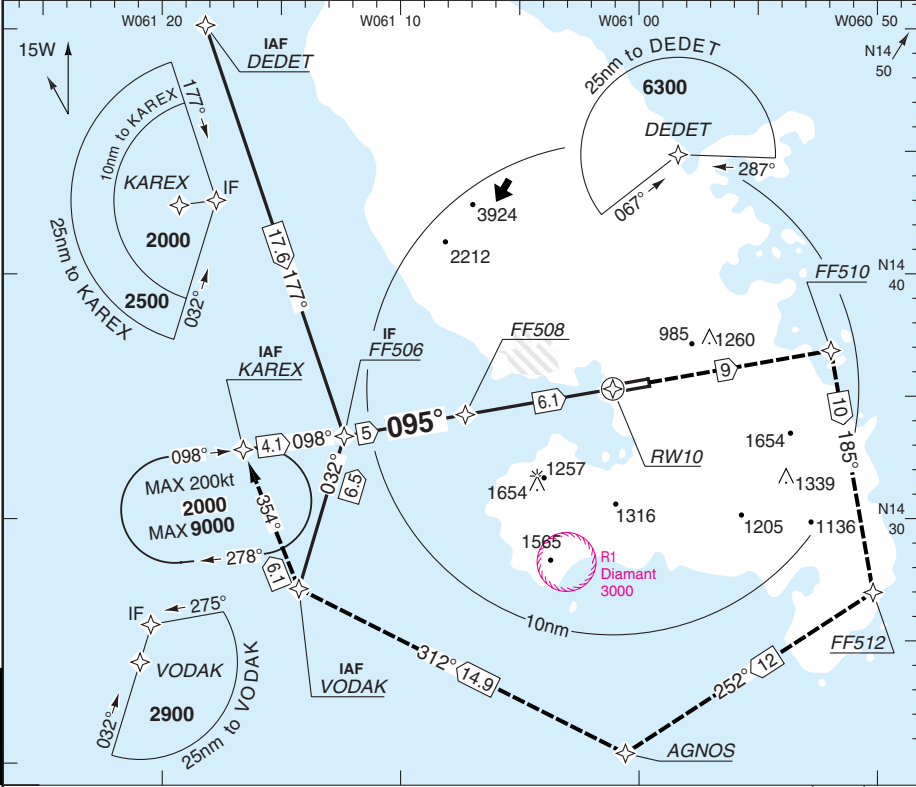
THIS CHART IS A PART OF NAVIGRAPH NDAC AND IS INTENDED FOR FLIGHT SIMULATION USE ONLY

RNAV (GNSS) RWY 10

Aime Cesaire **MARTINIQUE**

Martinique APP 121.0 129.05	TWR 118.5	GND 121.9	ATIS 127.85
---	---------------------	---------------------	-----------------------

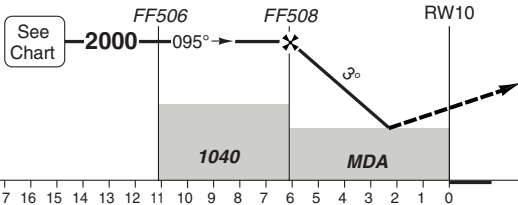
RNAV	FAT 095°	THR Elev 10	AD Elev 16	TL ATC	TA 9000
------	-----------------	--------------------	-------------------	--------	----------------



PANS OPS

50 - 8

MAPt RWY10



Climb on 095° to FF510, then turn right to FF512, then turn right to AGNOS and then turn right to VODAK and then to KAREX climbing to **3000** and hold.
(Climb to **2000** prior to level acceleration.)

nm	19	18	17	16	15	14	13	12	11	10	9	8	7	6	5	4	3	2	1	0
ACFT	LNAV 4%			LNAV 3%			LNAV 2.5%			Circling ^a										
A	490 (480) 1500m			700 (680) 1500m			800 (780) 1500m			1490 (1470) 1.5km										
B	520 (500) 1500m			720 (700) 1500m			810 (800) 1500m			1490 (1470) 1.6km										
C	560 (540) 2400m			750 (730) 2400m			840 (820) 2400m			1590 (1570) 2.4km										
D	590 (570) 2400m			770 (750) 2400m			860 (840) 2400m			1710 (1690) 3.6km										
GS	80	100	120	140	160															
ROD 3.0°	430	540	640	750	850															
FAF-MAPt	4:34	3:39	3:03	2:37	2:17															
THR	09	3.0°																		
ALT	6.1	2000																		
	5	1650																		
	4	1340																		
	3	1020																		
	2.5	860																		
	2.2	770																		
	1.7	590																		

^a Day OPS only

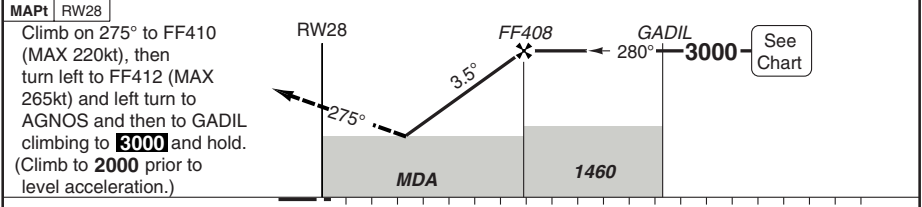
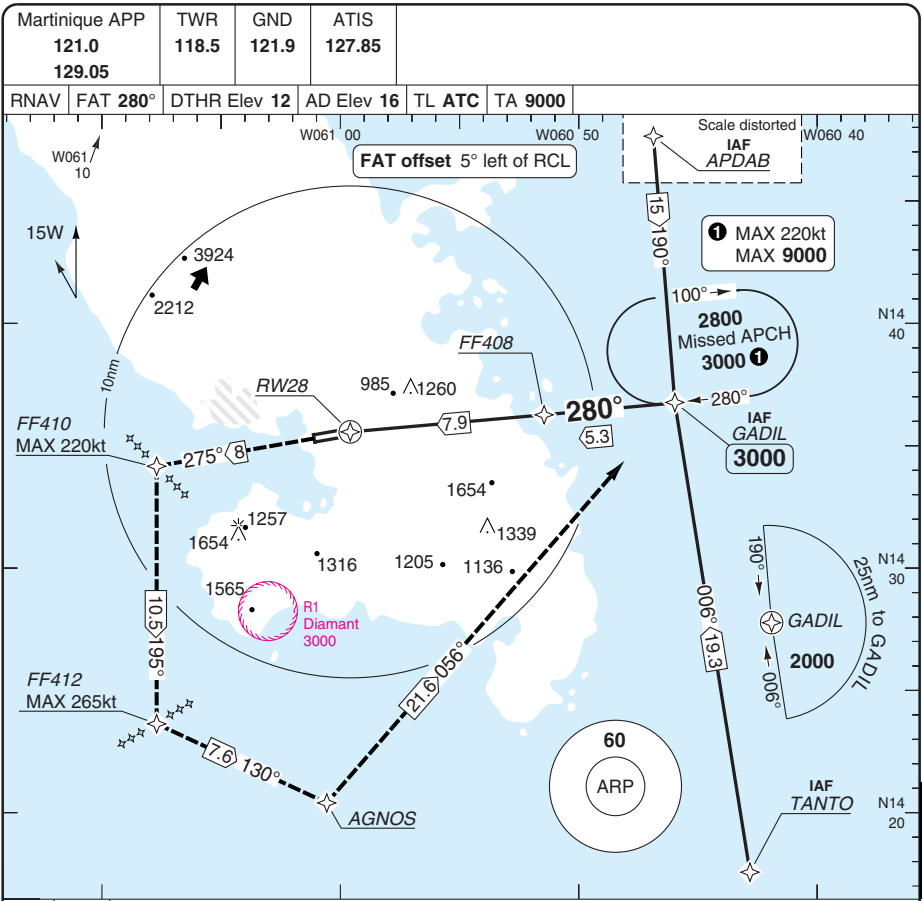
LDA 3000x45
9842x147ft
P 3° (64)

NALS

© Navtech - tfff08iap00

RNAV (GNSS) RWY 28

Aime Cesaire MARTINIQUE



ACFT	LNAV	Circling ^a						THR	3.5° ALT	LDA 2750x45
A	1270 (1250) 5000m	1490 (1470) 5.0km						27	3000	9022x147ft P 3.5° (70)
B		1490 (1470) 5.0km						7	2670	
C		1590 (1570) 5.0km						6	2300	
D		1710 (1690) 5.0km						5	1930	
GS	80	100	120	140	160			4	1550	
ROD 3.5°	500	630	750	870	1000			3.3	1270	
FAF-MAPt	5:55	4:44	3:57	3:23	2:58					

a) Day OPS only

EU OPS

NALS

Reverse side blank

JAR-OPS Landing Minima

Aime Cesaire **MARTINIQUE**

The following Minima is for Public Transport aircraft and conforms to JAR-OPS1 regulations.

STRAIGHT-IN APPROACH		C				D			
R/W	Procedure	DA/ MDA QNH ft	DH/ MDH QFE ft	RVR m	RVR No ALS m	DA/ MDA QNH ft	DH/ MDH QFE ft	RVR m	RVR No ALS m
10	ILS (M/App 2.5%)	490	480	1200	N/A	500	490	1200	N/A
10	ILS (M/App 2.5%)(3)	N/A	N/A	N/A	N/A	510	500	1200	N/A
10	ILS (M/App 3.0%)	310	300	1200	N/A	330	320	1200	N/A
10	ILS (M/App 3.0%)(3)	N/A	N/A	N/A	N/A	390	380	1200	N/A
10	ILS (M/App 4.0%)(2)	210	200	1000	N/A	210	200	1000	N/A
10	LOC/DME	730	720	2000	N/A	750	740	2000	N/A
10	VOR/DME (KAREX)(1)	620	600	2000	N/A	640	620	2000	N/A
10	VOR (1)	780	760	2000	N/A	800	780	2000	N/A
10	NDB (1)	1050	1030	2000	N/A	1070	1050	2000	N/A
10	RNAV (LNAV)(M/App2.5%)(1)	840	820	2000	N/A	860	840	2000	N/A
10	RNAV (LNAV)(M/App3.0%)(1)	750	730	2000	N/A	770	750	2000	N/A
10	RNAV (LNAV)(M/App4.0%)(1)	560	540	2000	N/A	590	570	2000	N/A
28	VOR/DME (GADIL)(1)(4)	1400	1380	2000	N/A	1400	1380	2000	N/A
28	RNAV (LNAV)(1)	1270	1250	2000	N/A	1270	1250	2000	N/A

Notes:

- (1) Procedure based on aerodrome elevation.
- (2) Includes Cat DL.
- (3) Cat DL acft.
- (4) VOR/DME (GADIL) CIRC N/A.

CIRCLING		C			D		
R/W	Procedure	MDA QNH ft	MDH QFE ft	Vis m	MDA QNH ft	MDH QFE ft	Vis m
10	ILS, LOC (1)	1670	1650	2400	2000	1980	3600
10	VOR/DME (KAREX), VOR (1)	1660	1640	2400	2000	1980	3600
10	NDB (FOF)(1)	1660	1640	2400	2000	1980	3600
10	RNAV (LNAV)(1)	1590	1570	2400	1710	1690	3600
28	RNAV (LNAV)	1590	1570	2400	1710	1690	3600

Notes:

- (1) HJ only.

TAKE-OFF		C		D	
Runway	Facilities	RVR	Vis	RVR	Vis
10/28	-	550	-	550	-

Notes:

JAR-OPS Landing Minima

Aime Cesaire **MARTINIQUE**

The following Minima is for Public Transport aircraft and conforms to JAR-OPS1 regulations.

STRAIGHT-IN APPROACH		A				B			
R/W	Procedure	DA/ MDA QNH ft	DH/ MDH QFE ft	RVR m	RVR No ALS m	DA/ MDA QNH ft	DH/ MDH QFE ft	RVR m	RVR No ALS m
10	ILS (M/App 2.5%)	470	460	1200	N/A	480	470	1200	N/A
10	ILS (M/App 2.5%)(3)	N/A	N/A	N/A	N/A	N/A	N/A	N/A	N/A
10	ILS (M/App 3.0%)	280	270	1200	N/A	300	290	1200	N/A
10	ILS (M/App 3.0%)(3)	N/A	N/A	N/A	N/A	N/A	N/A	N/A	N/A
10	ILS (M/App 4.0%)(2)	210	200	1000	N/A	210	200	1000	N/A
10	LOC/DME	690	680	1500	N/A	710	700	1500	N/A
10	VOR/DME (KAREX)(1)	580	560	1500	N/A	600	580	1500	N/A
10	VOR (1)	740	720	1500	N/A	760	740	1500	N/A
10	NDB (1)	1010	990	1500	N/A	1030	1010	1500	N/A
10	RNAV (LNAV)(M/App2.5%)(1)	800	780	1500	N/A	820	800	1500	N/A
10	RNAV (LNAV)(M/App3.0%)(1)	700	680	1500	N/A	720	700	1500	N/A
10	RNAV (LNAV)(M/App4.0%)(1)	500	480	1500	N/A	520	500	1500	N/A
28	VOR/DME (GADIL)(1)(4)	1400	1380	1500	N/A	1400	1380	1500	N/A
28	RNAV (LNAV)(1)	1270	1250	1500	N/A	1270	1250	1500	N/A

Notes:

- (1) Procedure based on aerodrome elevation.
- (2) Includes Cat DL.
- (3) Cat DL acft.
- (4) VOR/DME (GADIL) CIRC N/A.

CIRCLING		A			B		
R/W	Procedure	MDA QNH ft	MDH QFE ft	Vis m	MDA QNH ft	MDH QFE ft	Vis m
10	ILS, LOC (1)	810	790	1500	1080	1060	1600
10	VOR/DME (KAREX), VOR (1)	800	780	1500	1080	1060	1600
10	NDB (FOF)(1)	1010	990	1500	1080	1060	1600
10	RNAV (LNAV)(1)	1490	1470	1500	1490	1470	1600
28	RNAV (LNAV)	1490	1470	1500	1490	1470	1600

Notes:

- (1) HJ only.

TAKE-OFF		A		B	
Runway	Facilities	RVR	Vis	RVR	Vis
10/28	-	550	-	550	-

Notes: