

Airport information:

Country: Brazil

City: SAO PAULO INTL

Coordinates: S 23 37.6, W 046° 39.4'

Elevation: 2631

Customs:

Fuel: 100, AVGAS

RFF: CAT 7

hours: 0900-0200

Runways:

Runway 17L

Takeoff length: 1435, Landing length: 1435

Runway 17R

Takeoff length: 1940, Landing length: 1810

Runway 35L

Takeoff length: 1940, Landing length: 1880

Runway 35R

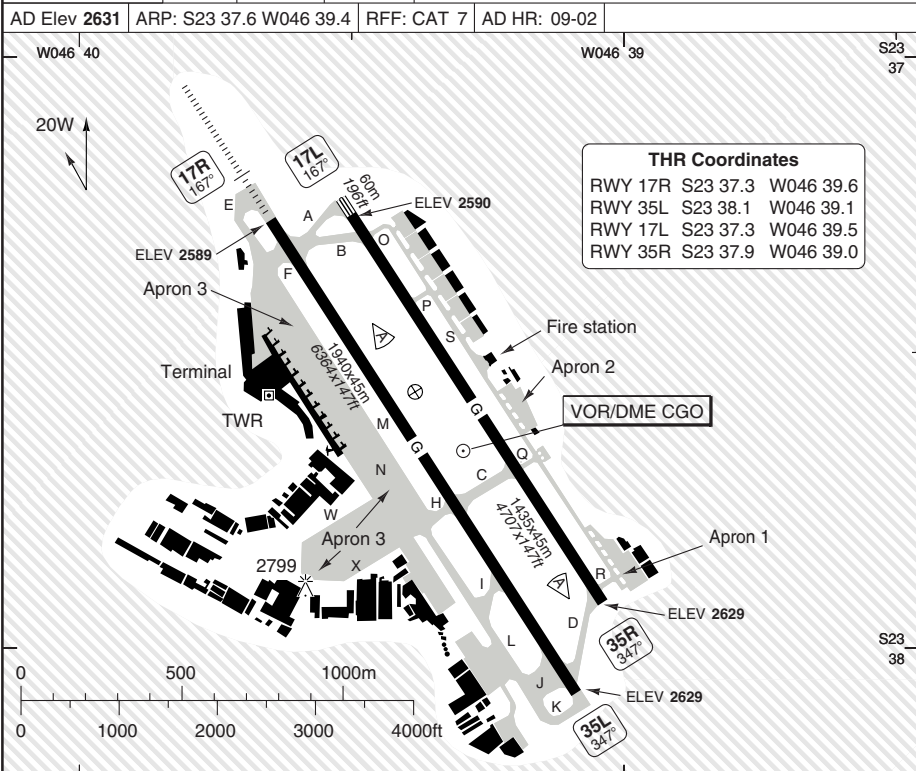
Takeoff length: 1435, Landing length: 1435

AERODROME

Congonhas INTL SAO PAULO

10 - 1

Sao Paulo CLR 120.6	GND 121.9	TWR 127.15 118.05	ATIS 127.65
AD Elev 2631	ARP: S23 37.6 W046 39.4	RRF: CAT 7	AD HR: 09-02



RWY	Slope	TORA m/ft	LDA m/ft	ALS	REDL	Additional
17L	+0.8	1435 / 4707	1435 / 4707	-	-	P
35R	-0.8	1435 / 4707	1435 / 4707	-	-	-
17R	+0.6	1940 / 6364	1810 / 5938	H-D ①	-	P
35L	-0.6	1940 / 6364	1880 / 6167	-	-	P

① 500m.

STATE		TAKE OFF MINIMA	
RWY	Facilities	RVR/VIS A B C D	
All	RCL (day only) or RCL + REDL or NIL (day only)	500m / 0.6km	

© Navtech - sbbsp01laorg0

Change: TWR Freq, Elev

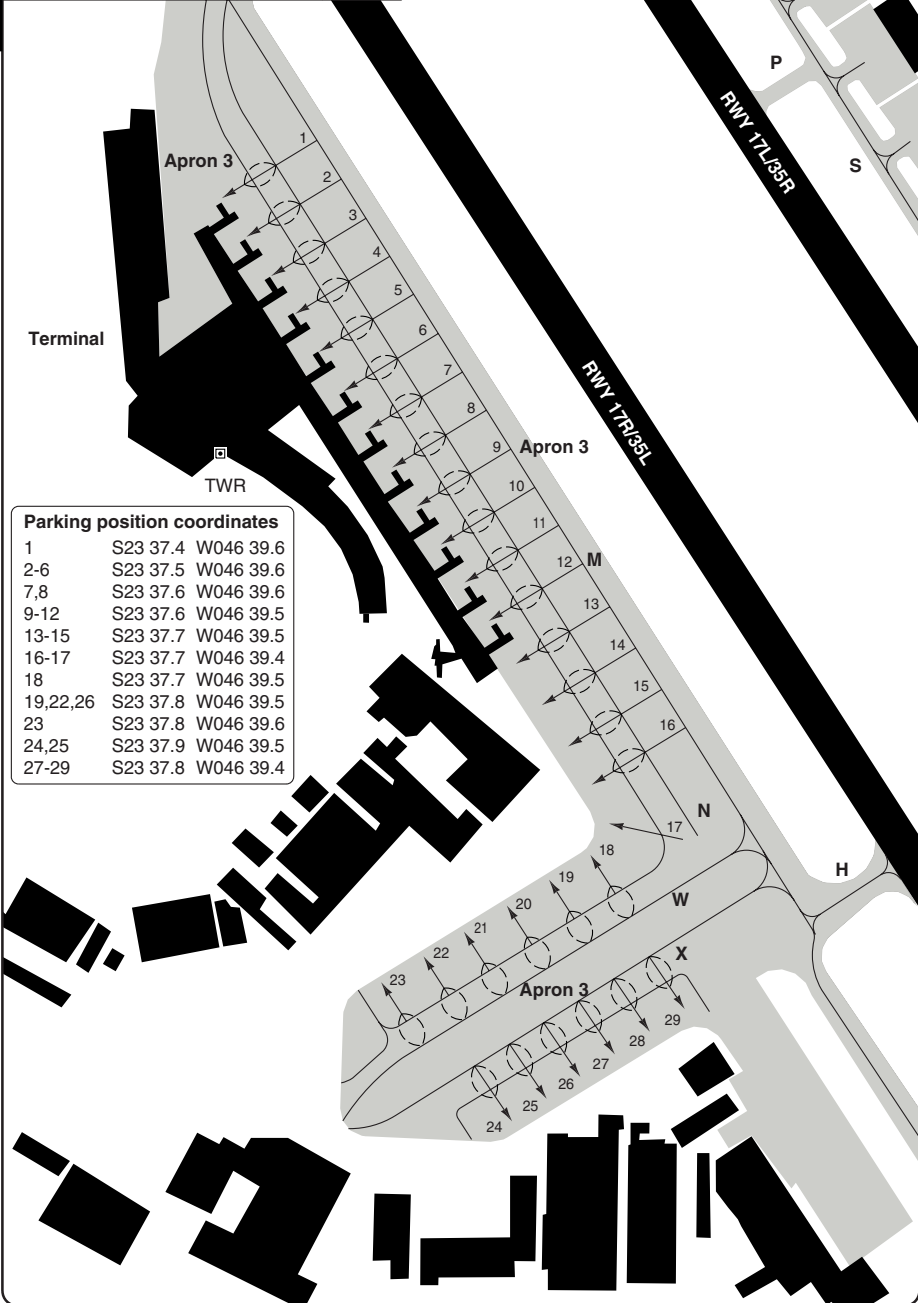
THIS CHART IS A PART OF NAVIGRAPH NDAC AND IS INTENDED FOR FLIGHT SIMULATION USE ONLY

AERODROME

Congonhas INTL SAO PAULO

10 - 2

Sao Paulo CLR 120.6	GND 121.9	TWR 127.15 118.05	ATIS 127.65
------------------------	--------------	-------------------------	----------------



Parking position coordinates

1	S23 37.4	W046 39.6
2-6	S23 37.5	W046 39.6
7,8	S23 37.6	W046 39.6
9-12	S23 37.6	W046 39.5
13-15	S23 37.7	W046 39.5
16-17	S23 37.7	W046 39.4
18	S23 37.7	W046 39.5
19,22,26	S23 37.8	W046 39.5
23	S23 37.8	W046 39.6
24,25	S23 37.9	W046 39.5
27-29	S23 37.8	W046 39.4

© Navitech - sbsp02laorg0

Change: TWR Freq

THIS CHART IS A PART OF NAVIGRAPH NDAC AND IS INTENDED FOR FLIGHT SIMULATION USE ONLY

Additional Landing Minima

Congonhas INTL **SAO PAULO**

VOR RWY 17L/R INDIA 1

ACFT	VOR+NDB a	VOR+NDB b	Circling c	a RWY 17L b RWY 17R c RWY 35R/35L: West of AD △ VOR+NDB: 700ft Circling: 800ft
STATE	A	3280 (690) 1.6km △	3280 (691) 1.6km △	3430 (799) 1.6km △
	B			3430 (799) 2.0km △
	C	3280 (690) 2.8km △	3280 (691) 2.8km △	3430 (799) 3.6km △
	D	3280 (690) 3.2km △	3280 (691) 3.2km △	3430 (799) 4.0km △

Change: Minima

THIS CHART IS A PART OF NAVIGRAPH NDAC AND IS INTENDED FOR FLIGHT SIMULATION USE ONLY

SID RWY 17L/R **RNAV** ①

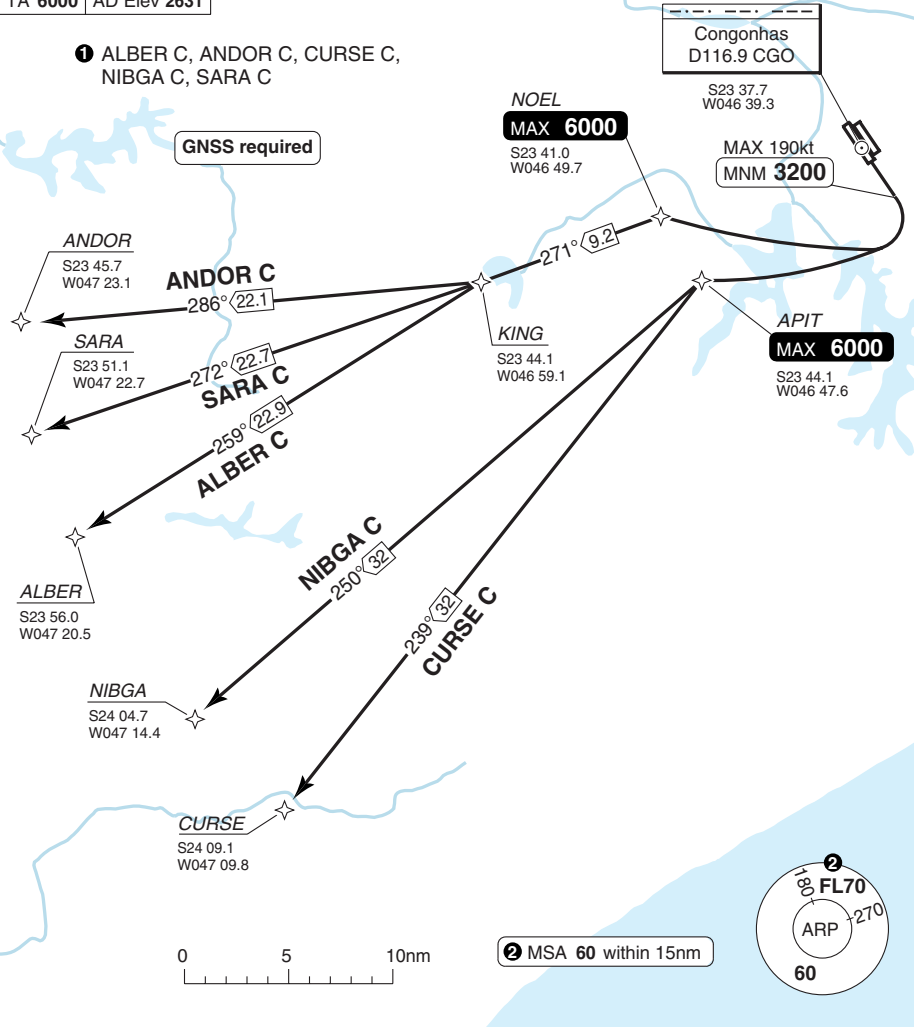
Congonhas INTL **SAO PAULO**

Sao Paulo CLR 120.6	GND 121.9	TWR 127.15 118.05	APP 119.25 119.8 120.05 134.9 135.75 ALTN	ATIS 127.65
-------------------------------	---------------------	-----------------------------	---	-----------------------

TA **6000** | AD Elev **2631**

① **ALBER C, ANDOR C, CURSE C, NIBGA C, SARA C**

GNSS required



30 - 1

SPEED: MAX 190kt upto MNM 3200.
MNM CLIMB GRADIENT: 5% upto 4000.

SID	Routing	Altitudes
(INITIAL CLIMB)	Climb on 167° - at 3200 (MAX 190kt) - turn right - follow SID.	
ALBER C	NOEL - KING - ALBER.	NOEL MAX 6000
ANDOR C	NOEL - KING - ANDOR.	
CURSE C	APIT - CURSE.	APIT MAX 6000
NIBGA C	APIT - NIBGA.	
SARA C	NOEL - KING - SARA.	NOEL MAX 6000

Change: Freq.

SID RWY 17L/R **RNAV** ①

Congonhas INTL **SAO PAULO**

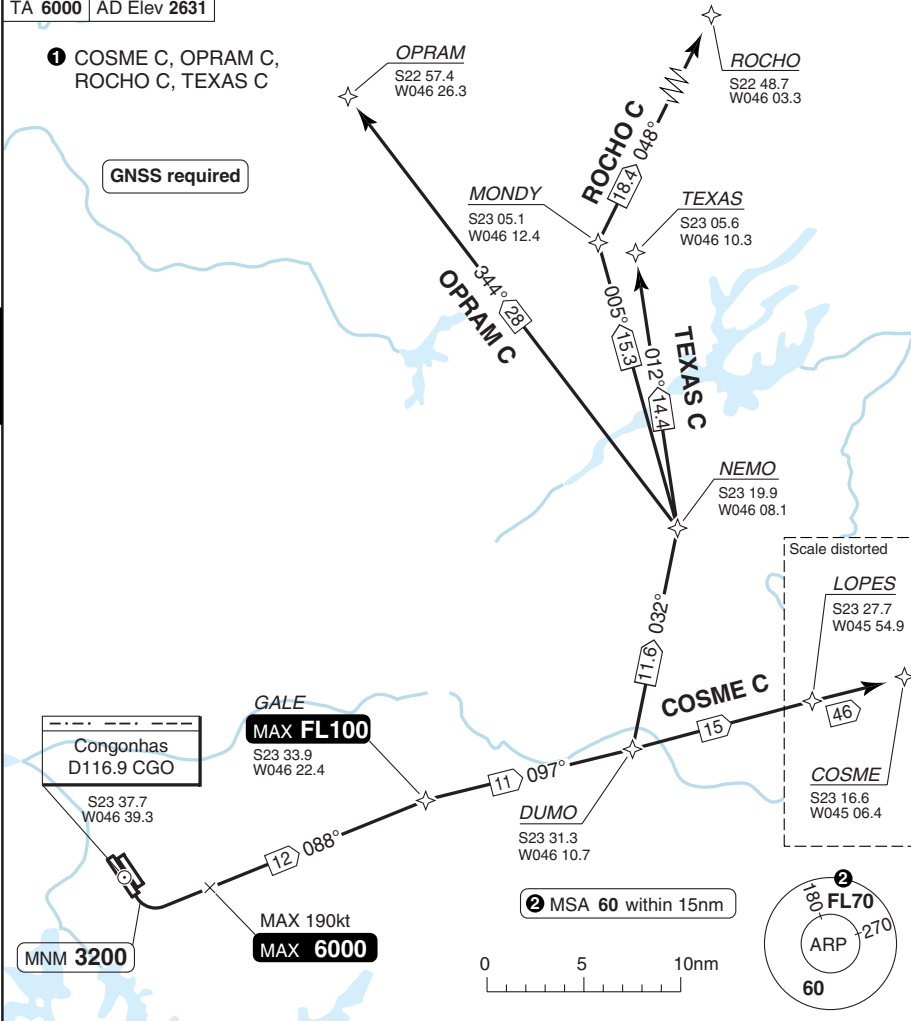
Sao Paulo CLR 120.6	GND 121.9	TWR 127.15	118.05	APP 119.8	135.75	133.85	Rio APP 119.0	Sao Paulo ATIS 127.65
				134.9	119.6	ALTN	119.35	

TA **6000** | AD Elev **2631**

① COSME C, OPRAM C, ROCHO C, TEXAS C

GNS required

30 - 2



SPEED: MAX 190kt until 12nm to GALE.
ALT RESTRICTION: MAX **6000** until 12nm to GALE.
MNM CLIMB GRADIENT: 5% upto 4500.

SID	Routing	Altitudes
(INITIAL CLIMB)	Climb on 167° - at 3200 turn left - 088° - GALE - DUMO - follow SID.	GALE MAX FL100
COSME C	LOPES - COSME.	
OPRAM C	NEMO - OPRAM.	
ROCHO C	NEMO - MONDY - ROCHO.	
TEXAS C	NEMO - TEXAS.	

© Navtech - sbsp02daorg0

Change: Freq.

THIS CHART IS A PART OF NAVIGRAPH NDAC AND IS INTENDED FOR FLIGHT SIMULATION USE ONLY

SID RWY 17L/R **RNAV**¹

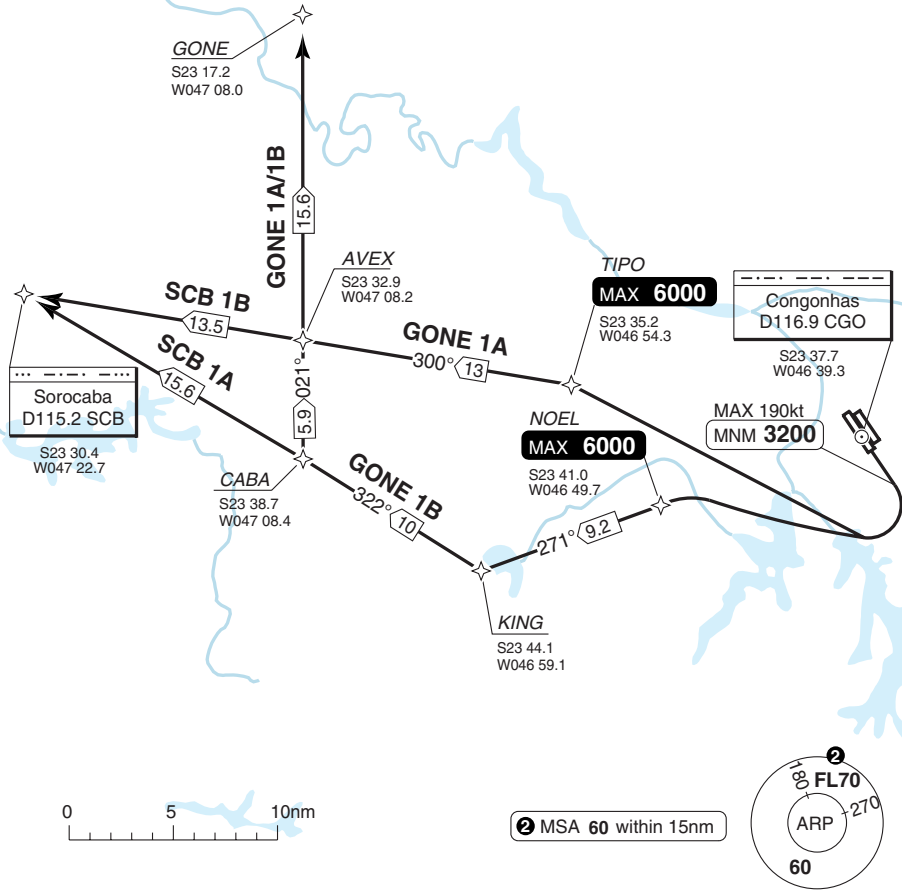
Congonhas INTL **SAO PAULO**

Sao Paulo CLR 120.6	GND 121.9	TWR 127.15 118.05	APP 119.25 119.8 120.05 134.9 135.75 ALTN	ATIS 127.65
------------------------	--------------	-------------------------	---	----------------

TA 6000 | AD Elev 2631

1 GONE 1A/1B, SCB 1A/1B

GNSSE required



30 - 3

SPEED: MAX 190kt upto MNM 3200.
MNM CLIMB GRADIENT: 5% upto 4000.

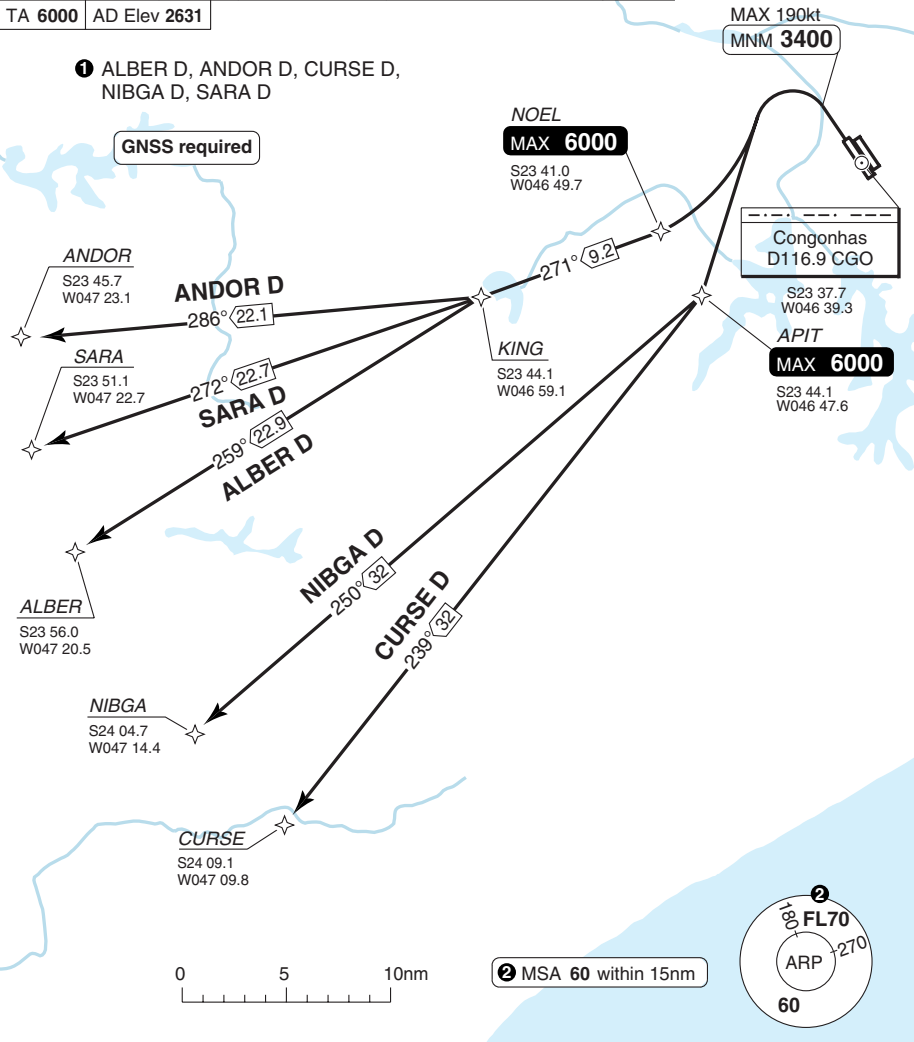
SID	Routing	Altitudes
(INITIAL CLIMB)	Climb on 167° - at 3200 (MAX 190kt) turn right - follow SID.	
GONE 1A	TIPO - AVEX - GONE.	TIPO MAX 6000
GONE 1B	NOEL - KING - CABA - AVEX - GONE.	NOEL MAX 6000
SCB 1A	NOEL - KING - CABA - SCB.	
SCB 1B	TIPO - AVEX - SCB.	TIPO MAX 6000

Change: Freq.

SID RWY 35L/R **RNAV** ①

Congonhas INTL **SAO PAULO**

Sao Paulo CLR 120.6	GND 121.9	TWR 127.15	118.05	APP 119.25	119.8	120.05	ATIS 127.65
TA 6000		AD Elev 2631		134.9	135.75		ALTN



30 - 4

SPEED: MAX 190kt upto MNM 3400.
MNM CLIMB GRADIENT: 5% upto 4000.

SID	Routing	Altitudes
(INITIAL CLIMB)	Climb on 347° - at 3400 (MAX 190kt) turn left - follow SID.	
ALBER D	NOEL - KING - ALBER.	NOEL MAX 6000
ANDOR D	NOEL - KING - ANDOR.	
CURSE D	APIT - CURSE.	APIT MAX 6000
NIBGA D	APIT - NIBGA.	
SARA D	NOEL - KING - SARA.	NOEL MAX 6000

Change: Freq.

SID RWY 35L/R **RNAV** ①

Congonhas INTL **SAO PAULO**

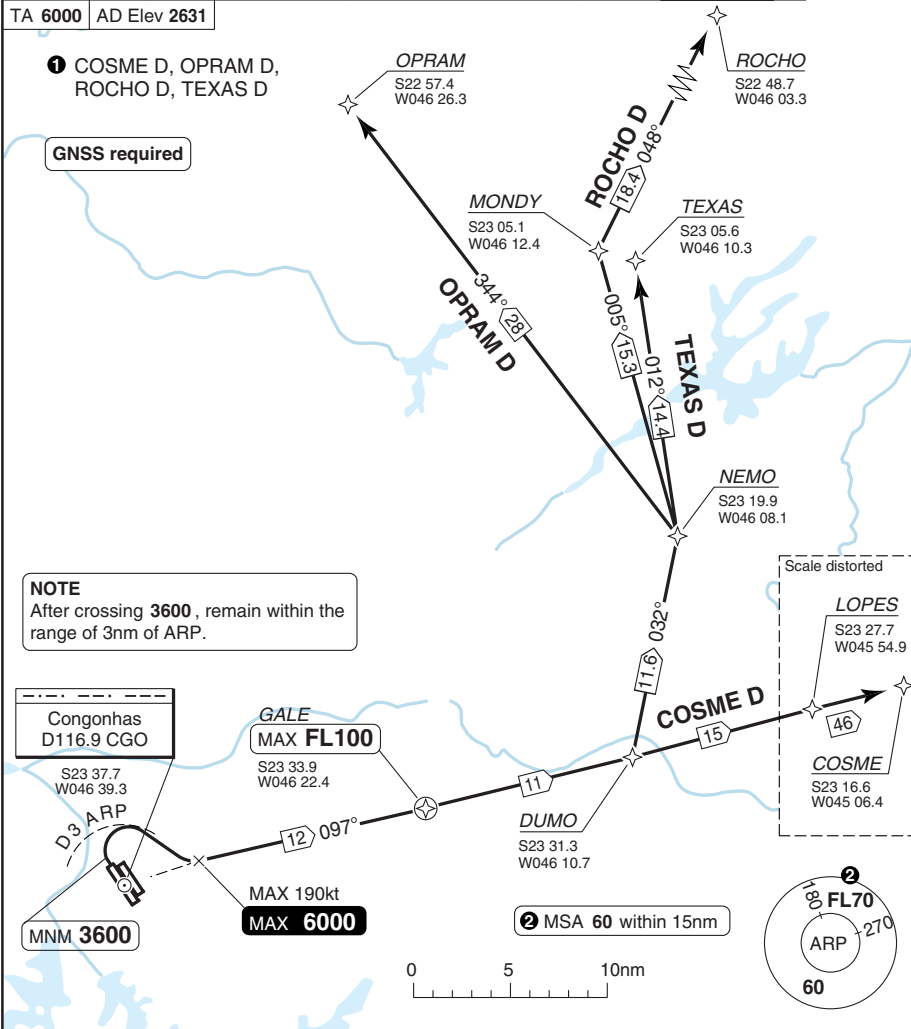
Sao Paulo CLR	GND	TWR	APP	Rio APP	Sao Paulo ATIS
120.6	121.9	127.15 118.05	119.8 135.75 133.85	119.0	127.65
			134.9 120.25 119.6 ALTN	119.35	

TA 6000 | AD Elev 2631

① COSME D, OPRAM D, ROCHO D, TEXAS D

GNSR required

NOTE
After crossing 3600, remain within the range of 3nm of ARP.



SPEED: MAX 190kt until 12nm to GALE.
ALT RESTRICTION: MAX 6000 until 12nm to GALE.
MNM CLIMB GRADIENT: 9% upto 3600.

SID	Routing	Altitudes
(INITIAL CLIMB)	Climb on 347° - at 3600 turn right - intcp R097 CGO - GALE - DUMO - follow SID.	GALE MAX FL100
COSME D	LOPES - COSME.	
OPRAM D	NEMO - OPRAM.	
ROCHO D	NEMO - MONDY - ROCHO.	
TEXAS D	NEMO - TEXAS.	

Change: Freq.

SID RWY 35L/R **RNAV**¹

Congonhas INTL **SAO PAULO**

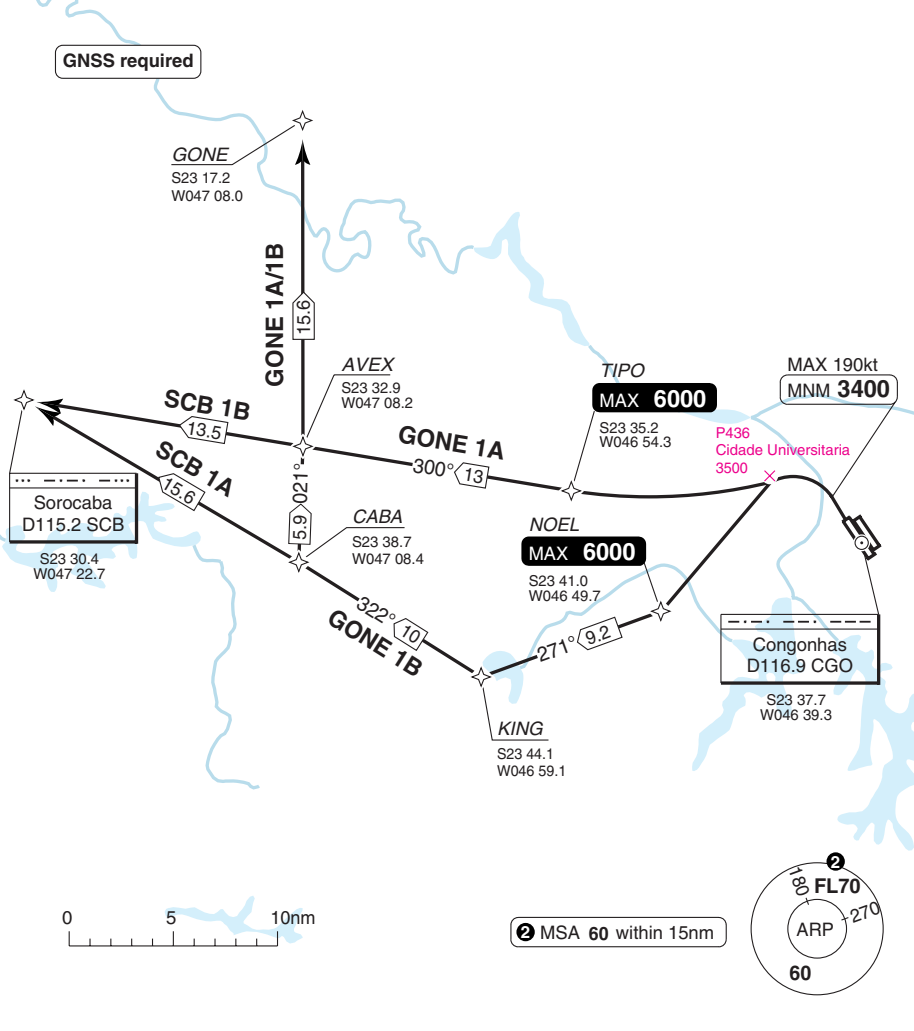
Sao Paulo CLR 120.6	GND 121.9	TWR 127.15 118.05	APP 119.25 119.8 120.05 134.9 135.75 ALTN	ATIS 127.65
-------------------------------	---------------------	---------------------------------------	--	-----------------------

TA **6000** AD Elev **2631**

1 GONE 1A/1B, SCB 1A/1B

GNSS required

30 - 6



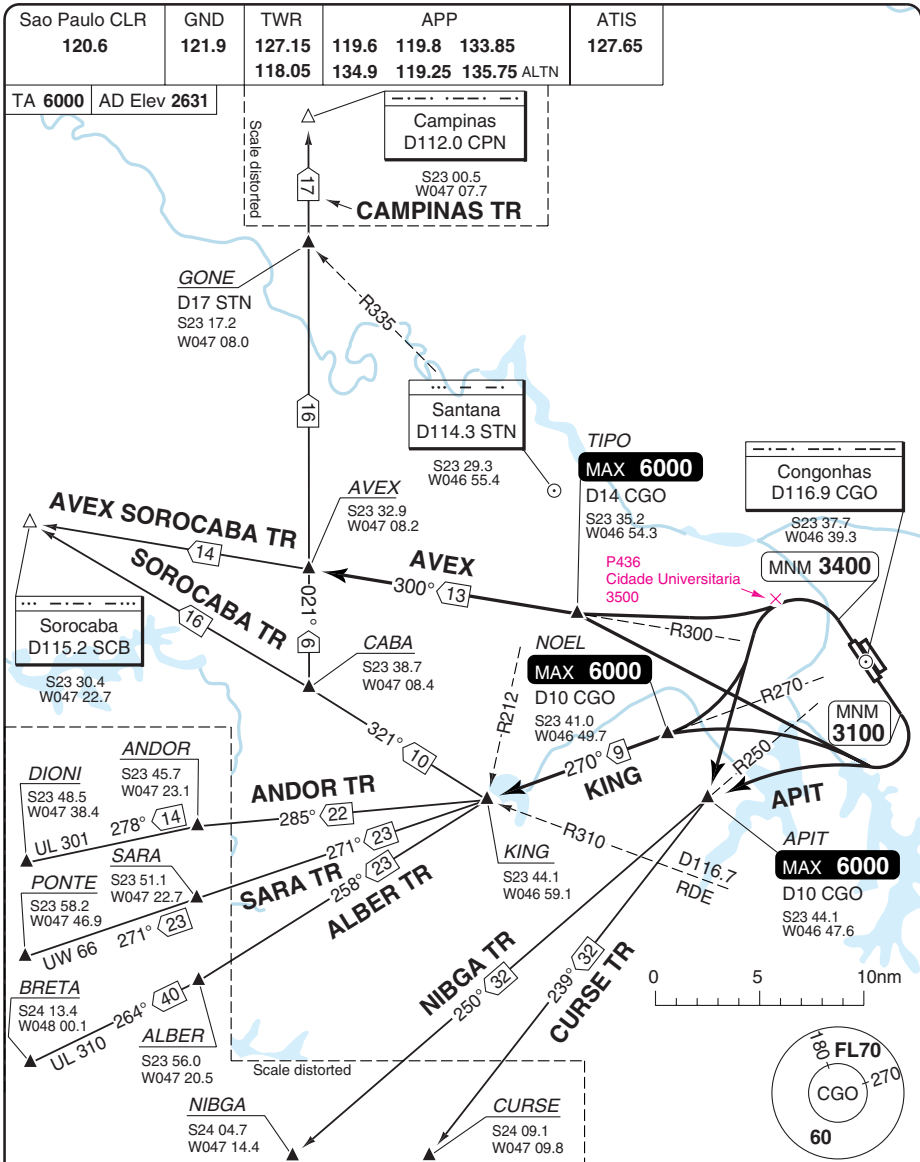
SPEED: MAX 190kt upto MNM 3400.
MNM CLIMB GRADIENT: 5% upto 4000.

SID	Routing	Altitudes
(INITIAL CLIMB)	Climb on 347° - at 3400 (MAX 190kt) - turn left - follow SID.	
GONE 1A	TIPO - AVEX - GONE.	TIPO MAX 6000
GONE 1B	NOEL - KING - CABA - AVEX - GONE.	NOEL MAX 6000
SCB 1A	NOEL - KING - CABA - SCB.	
SCB 1B	TIPO - AVEX - SCB.	TIPO MAX 6000

Change: Freq.

SID APIT, AVEX, KING

Congonhas INTL SAO PAULO



SPEED: MAX 190kt upto intercepting R250 CGO, R270 CGO, R300 CGO.

MNM CLIMB GRADIENT: 5% up to 4000.

SID	RWY	Routeing	Altitudes
(INITIAL CLIMB)	17L/R	Climb on 167° - at 3100 turn right - follow SID.	
	35L/R	Climb on 347° - at 3400 turn left - follow SID.	
APIT		APIT - then via transitions.	APIT MAX 6000
AVEX		TIPO - AVEX - then via transitions.	TIPO MAX 6000
KING		NOEL - KING - then via transitions.	NOEL MAX 6000

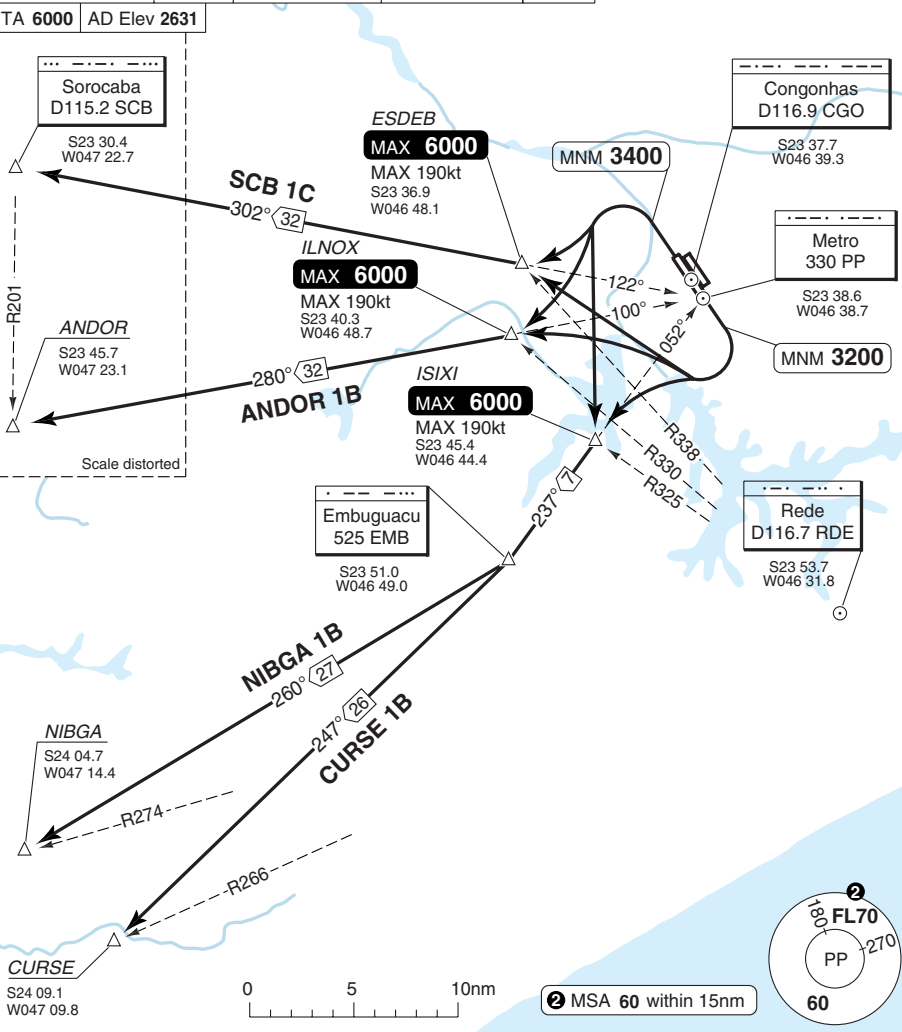
Change: Freq, Tracks, Distances.

THIS CHART IS A PART OF NAVIGRAPH NDAC AND IS INTENDED FOR FLIGHT SIMULATION USE ONLY

© Navtech - sbsp07daorg0

SID ANDOR 1B, CURSE 1B, NIBGA 1B, SCB 1C Congonhas INTL SAO PAULO

Sao Paulo CLR 120.6	GND 121.9	TWR 127.15 118.05	APP 119.8 134.9	ATIS 127.65
TA 6000 AD Elev 2631		120.05 ALTN		



SPEED: MAX 190kt until 057° PP, 100° PP, 122° PP.
ALT RESTRICTION: MAX 6000 until ISIXI, ILNOX and ESDEB.
MNM CLIMB GRADIENT: 5% upto 4000.

SID	RWY	Routeing	Altitudes
(INITIAL CLIMB)	17L/R	Climb on 167° - at 3200 turn right - follow SID.	
	35L/R	Climb on 347° - at 3400 turn left - follow SID.	
ANDOR 1B		ILNOX - ANDOR.	ILNOX MAX 6000
CURSE 1B		ISIXI - EMB - CURSE.	ISIXI MAX 6000
NIBGA 1B		ISIXI - EMB - NIBGA.	ISIXI MAX 6000
SCB 1C		ESDEB - SCB.	ESDEB MAX 6000

Change: Freq.

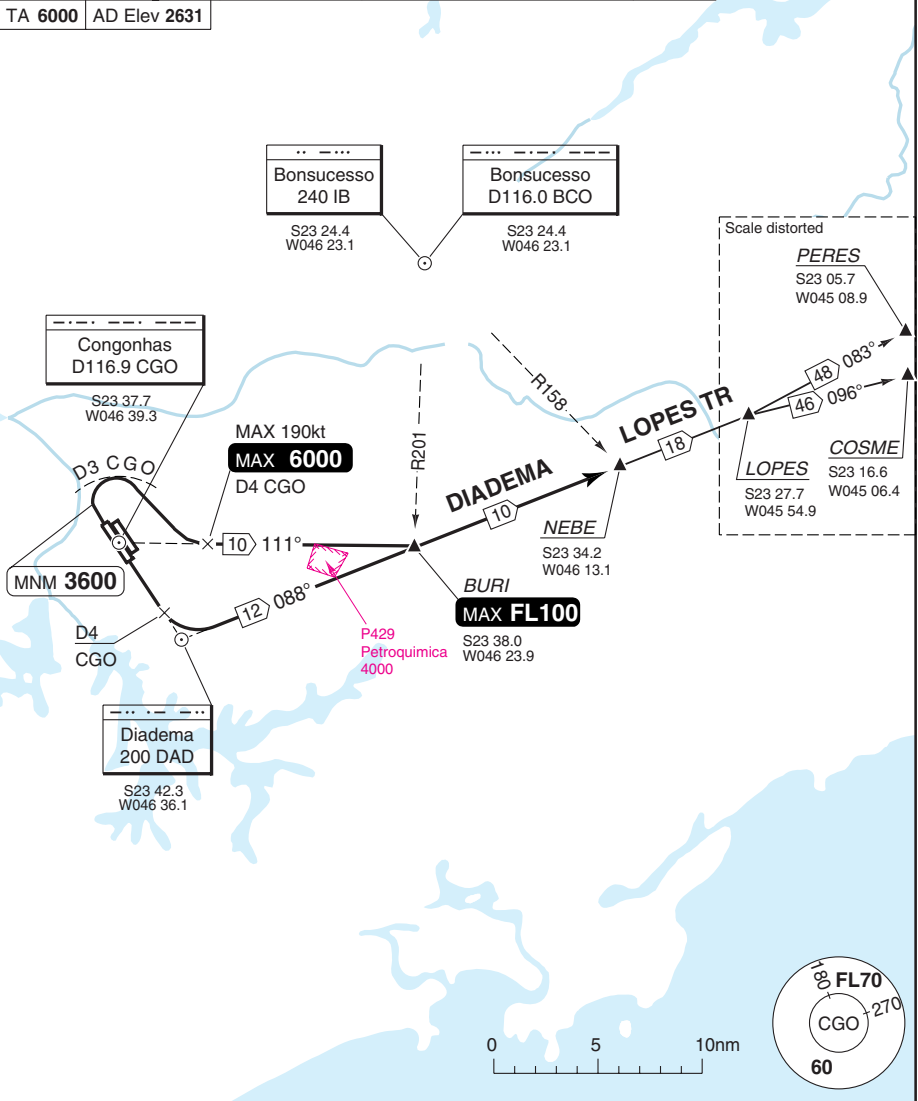
© Navitech - sbsp08daorg0

SID DIADEMA

Congonhas INTL SAO PAULO

Sao Paulo CLR 120.6	GND 121.9	TWR 127.15 118.05	APP 119.8 135.75 133.85	ATIS 127.65
TA 6000		AD Elev 2631		
		125.6 120.05 ALTN 119.6 ALTN		

30 - 10



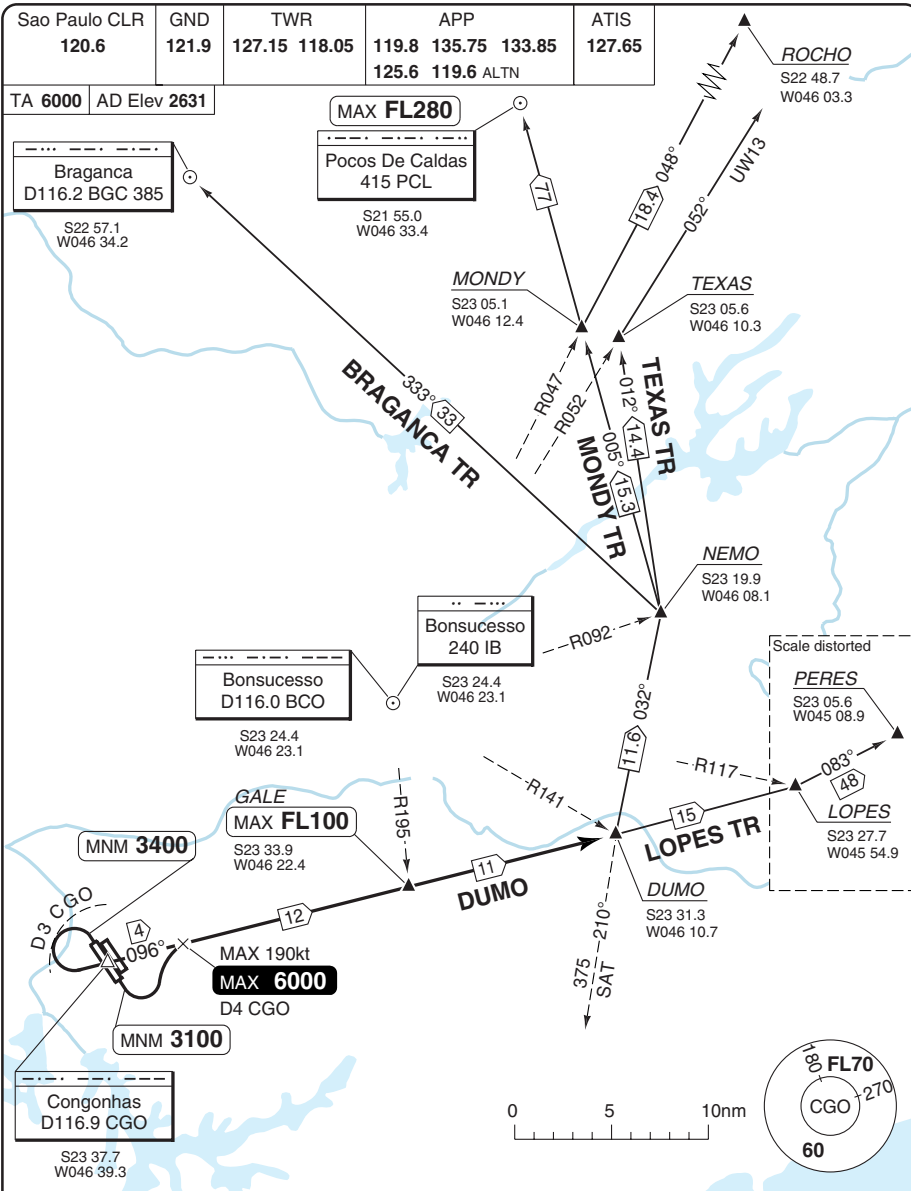
MNM CLIMB GRADIENT: RWY 17L/R: 4.2% upto 4500, RWY 35L/R: 9% upto 3600.

SID	RWY	Routeing	Altitudes
INITIAL CLIMB	17L/R	Climb on 167° - at D4 CGO turn left - intcp 088° from DAD - follow SID.	BURI MAX FL100
	35L/R	Climb on 347° - at 3600 turn right (within D3 CGO) - intcp R111 CGO (MAX 190kt) - follow SID.	D4 CGO MAX 6000 BURI MAX FL100
DIADEMA		BURI - NEBE - follow transition.	

Change: Freq.

SID DUMO

Congonhas INTL SAO PAULO



30 - 11

SPEED: MAX 190kt until intcp R096 CGO.
MNM CLIMB GRADIENT: 4.2% upto 4500.

SID	RWY	Routing	Altitudes
DUMO	17L/R	Climb on 167° - at 3100 turn left - D4 CGO (MAX 190kt) - intcp R096 CGO - GALE - DUMO - follow transition.	D4 CGO MAX 6000 GALE MAX FL100
	35L/R	Climb on 347° - at 3400 turn left (within D3 CGO) - CGO - intcp R096 CGO - GALE - DUMO - follow transition.	

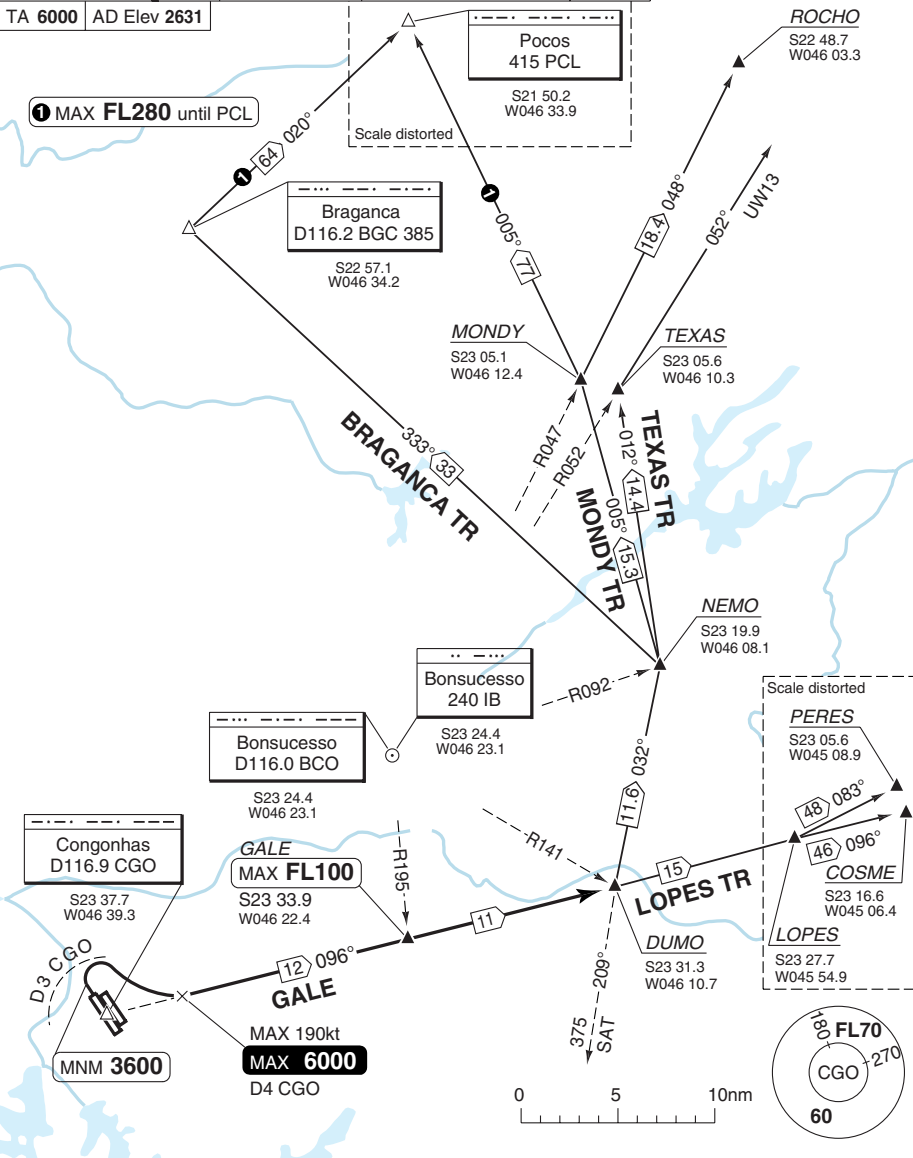
© Navitech - sbsp11daorg0

Change: Freq.

SID RWY 35L/R GALE

Congonhas INTL SAO PAULO

Sao Paulo CLR 120.6	GND 121.9	TWR 127.15 118.05	APP 119.8 135.75 133.85	ATIS 127.65
TA 6000 AD Elev 2631			125.6 119.6 ALTN	



30 - 12

© Navitech - sbsp12daorg0

SPEED: MAX 190kt until intercepting R096 CGO.
MNM CLIMB GRADIENT: 9% upto 3600.

SID	Routing	Altitudes
GALE	Climb on 347° - at 3600 turn right (within D3 CGO) - CGO - intop D4/R096 CGO (MAX 190kt) - GALE - DUMO - follow transition.	D4 CGO MAX 6000 GALE MAX FL100

Change: Freq.

STAR RWY 17L/R **RNAV** (GNSS) **1** Congonhas INTL **SAO PAULO**

Sao Paulo APP				TWR		GND	ATIS
119.25	119.6	119.8	120.05	127.15	118.05	121.9	127.65
132.1 133.85 135.75 ALTN							

TL ATC AD Elev 2631

1 GRADE 5, PIRA 3, POCOS 5

Pocos
415 PCL

S21 50.2
W046 33.9

Pirassununga
D115.8 PIR

S21 59.1
W047 20.7

Pirassununga
310 PSN

POCOS 5 TR

279° **44**

GNSS required

PIRA 3 TR

224° **45**

GRADE
MAX **FL240**

S22 40.5
W047 40.9

CELSO
FL200-220

S22 48.1
W047 33.7

COMMUNICATION FAILURE

A7600

Follow GRADE 5 / PIRA 3 / POCOS 5 ARR until TRIP, then intcp final APCH procedure to RWY 17L/R.

RANE
MAX 250kt
FL90-120

S23 08.9
W047 14.8

ERIC
MAX 210kt
MNM FL80

S23 16.5
W047 07.6

EVER
At **5200**

S23 28.7
W046 45.6

UMRAS
FL80-90

S23 21.7
W047 02.6

MAX 180kt
6000-FL70

Santana
D114.3 STN

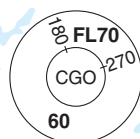
S23 29.3
W046 55.4

TRIP
At **5200**

S23 30.1
W046 44.6

Congonhas
D116.9 CGO

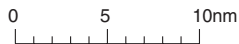
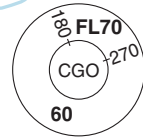
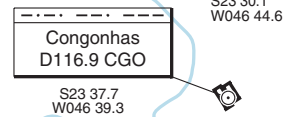
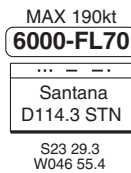
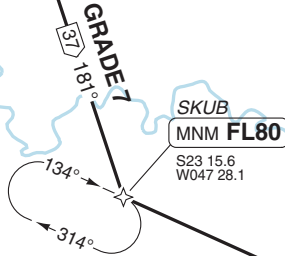
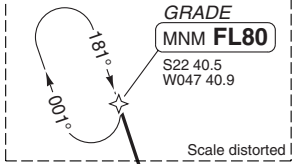
S23 37.7
W046 39.3



STAR RWY 17L/R **RNAV** (GNSS) GRADE 7 Congonhas INTL **SAO PAULO**

Sao Paulo APP			TWR	GND	ATIS
119.25	119.8	120.05	127.15	121.9	127.65
132.1	133.85	135.75	118.05		
ALTN					

TL ATC AD Elev 2631



GNSS required

COMMUNICATION FAILURE
 A7600
 Follow GRADE 7 ARR until TRIP, then intcp final APCH procedure to RWY 17L/R.

Sao Paulo APP			TWR	GND	ATIS
119.25	120.85	125.6	127.15	121.9	127.65
129.0	132.1	135.75	118.05		
ALTN					

GNSs required

TL ATC AD Elev 2631

⑤ IMBEK 7 / LITRE 3 / PARANAGUA 3 / RONUT 7

ZEKA
MAX 180kt
At 7000
S23 33.3
W046 51.5

EVER
At 5200
S23 28.7
W046 45.6

TRIP
At 5200
S23 30.1
W046 44.6

ARFA
MNM 7500
S23 36.0
W046 48.9

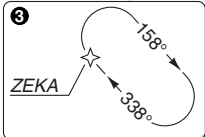
Congonhas
D116.9 CGO

SULCO
MAX FL190
S23 54.0
W045 56.9

LITRE 3 TR
275° 54

LITRE
S23 .39.3
W045 00.4

① IMBEK 7, LITRE 3, PARANAGUA 3, RONUT 7

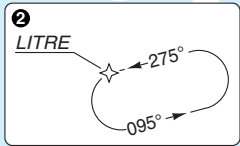


④ Altimeter setting point

BIRD
MAX 210kt
7500-8000
S23 41.9
W046 43.1

S23 37.7
W046 39.3

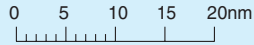
MAX 250kt
FL80-160



MAX 250kt
FL80-100

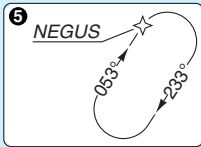
Santos
375 SAT
S23 59.0
W046 15.8

Rede
D116.7 RDE
S23 53.5
W046 31.7



Paranagua
340 PNG
S25 32.1
W048 31.9

NEGUS
FL100-200
S24 30.4
W046 58.1



COMMUNICATION FAILURE
A7600
Follow IMBEK 7 / LITRE 3 / PARANAGUA 3 / RONUT 7 ARR until TRIP, then intop final APCH procedure to RWY 17L/R.



PARANAGUA 3 TR
105° 073°
145

RONUT 7 TR
040° 033°
45

IMBEK
S25 03.7
W046 54.1

RONUT
S25 12.6
W047 15.1

STAR RWY 17L/R ENAV (GNSs) ①
Congonhas INTL SAO PAULO
Brazil - SBSP / CGH

40 - 3 | 24 AUG 11

THIS CHART IS A PART OF NAVIGRAPH NDAC AND IS INTENDED FOR FLIGHT SIMULATION USE ONLY

Change: Filed

STAR RWY 17L/R **RNAV** (GNSS) POCOS 7 Congonhas INTL SAO PAULO

Sao Paulo APP	TWR	GND	ATIS
119.25 119.6 119.8	127.15 118.05	121.9	127.65
120.05 132.1 135.75 AL TN			

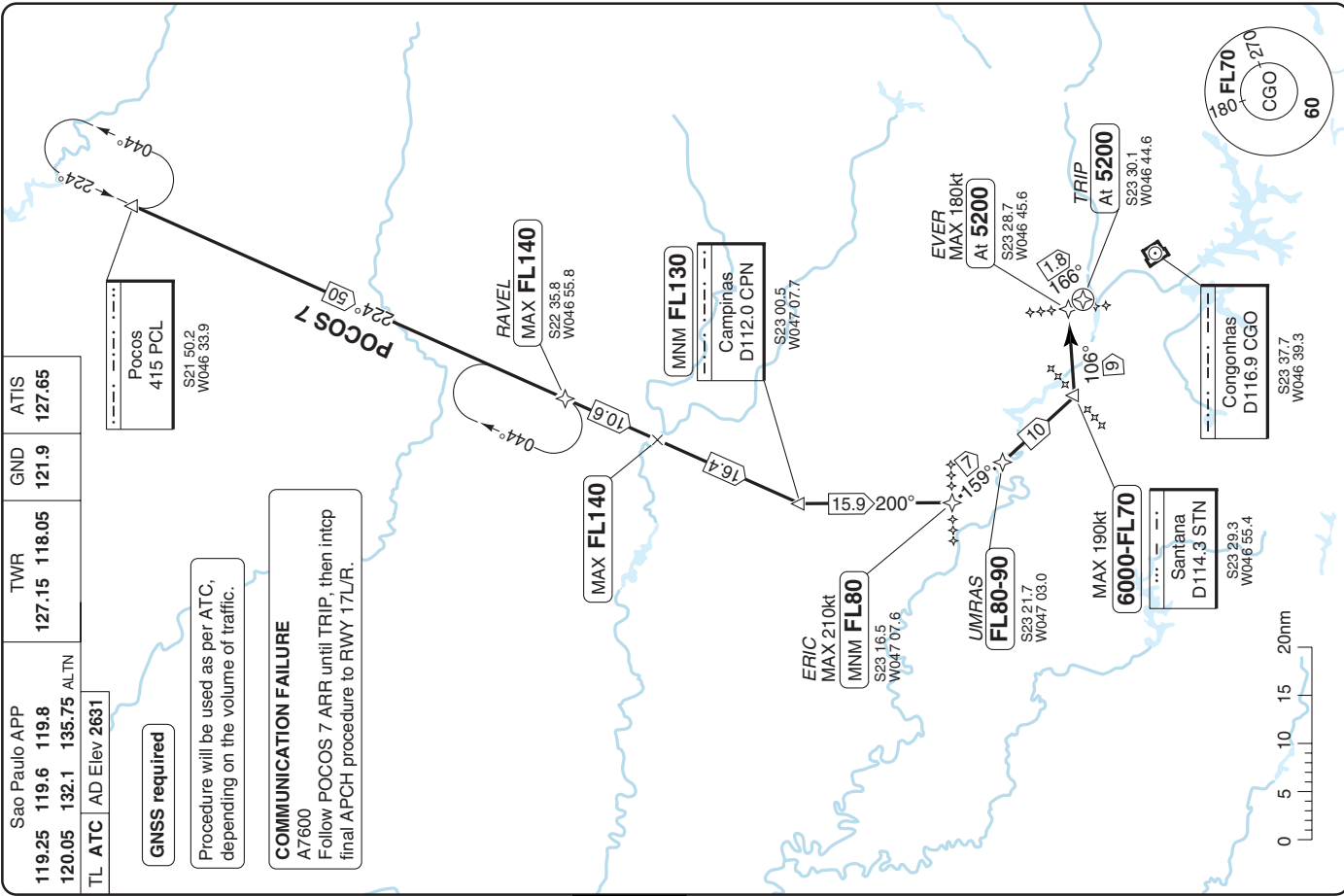
TL ATC AD Elev 2631

GNSS required

Procedure will be used as per ATC, depending on the volume of traffic.

COMMUNICATION FAILURE

A7600
Follow POCOS 7 ARR until TRIP, then intop final APCH procedure to RWY 17L/R.



Change: Freq.

THIS CHART IS A PART OF NAVIGRAPH NDAC AND IS INTENDED FOR FLIGHT SIMULATION USE ONLY

STAR RWY 35L/R **RNAV** (GNSS) 1 Congonhas INTL **SAO PAULO**

Sao Paulo APP				TWR	GND	ATIS	
119.25	119.6	119.8	120.05	127.15	118.05	121.9	127.65
132.1	133.85	135.75	ALTN				

TL ATC AD Elev 2631

1 GRADE 6, PIRA 4, POCOS 6

Pocos
415 PCL

S21 50.2
W046 33.9

Pirassununga
D115.8 PIR

S21 59.1
W047 20.7

Pirassununga
310 PSN

POCOS 6 TR

279° (44)

GNSS required

COMMUNICATION FAILURE
A7600
Follow GRADE 6 / PIRA 4 / POCOS 6 ARR until NADI, then intcp final APCH procedure to RWY 35L/R.

2 Altimeter setting point

PIRA 4 TR

224° (45)

GRADE
MAX FL240

S22 40.5
W047 40.9

CELISO
FL200-220

S22 48.1
W047 33.7

RANE
MAX 250kt
FL90-120

S23 08.9
W047 14.8

ERIC
MNM FL80

S23 16.5
W047 07.6

ARFA
MAX 210kt
7500-9000

S23 36.0
W046 48.9

Congonhas
D116.9 CGO

S23 37.7
W046 39.3

8000-FL110

Santana
D114.3 STN

S23 29.3
W046 55.4

BIRD
7500-8000

S23 41.9
W046 43.1

NADI
At 5000

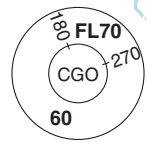
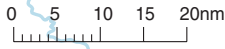
S23 44.2
W046 34.7

KELY
At 5000

S23 46.0
W046 33.5

BULI
MAX 180kt
At 6000

S23 48.1
W046 37.2



40 - 5

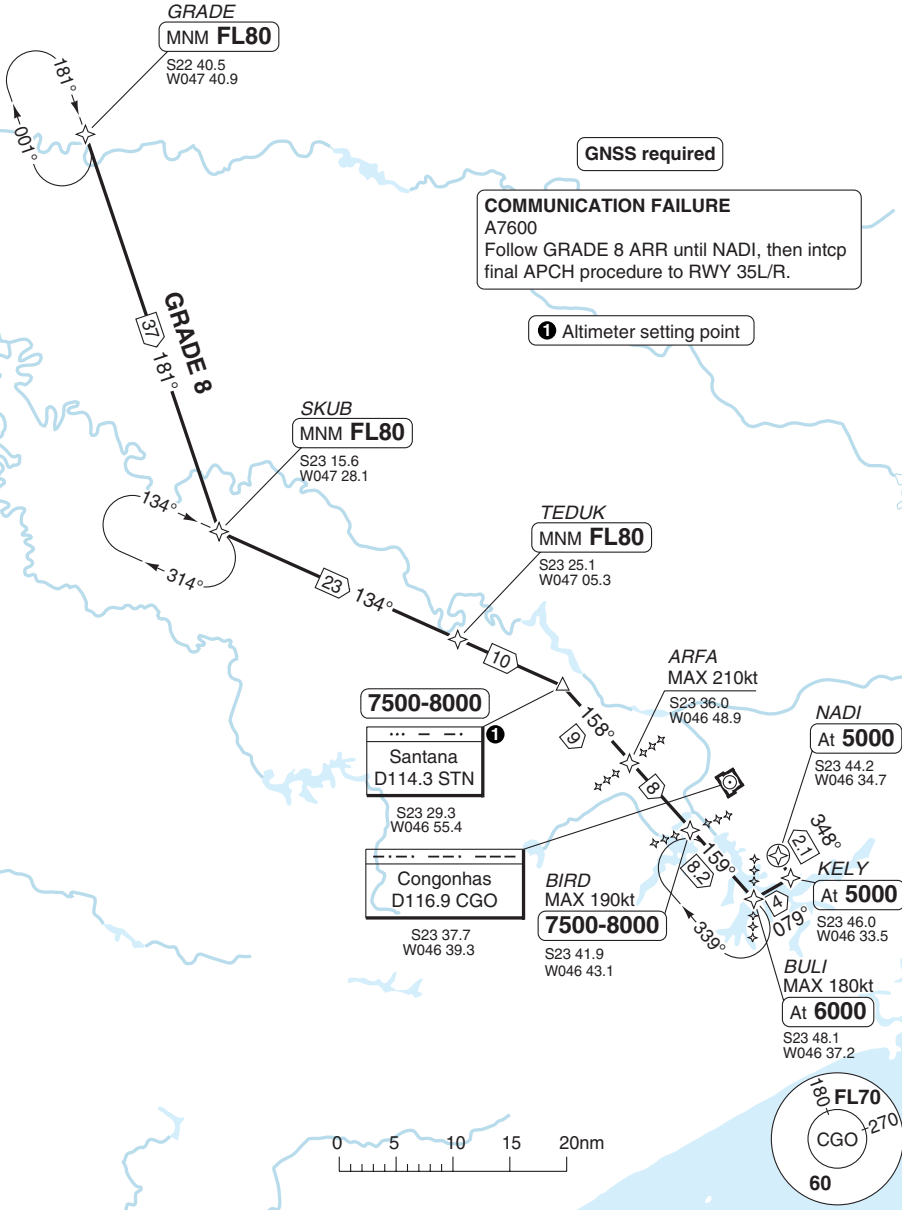
© Navitech - sbbsp05aacorgo

Change: Freq.

THIS CHART IS A PART OF NAVIGRAPH NDAC AND IS INTENDED FOR FLIGHT SIMULATION USE ONLY

STAR RWY 35L/R **RNAV** (GNSS) GRADE 8 Congonhas INTL SAO PAULO

Sao Paulo APP			TWR	GND	ATIS
119.25	119.8	120.05	127.15 118.05	121.9	127.65
132.1	133.85	135.75	ALTN		
TL	ATC	AD Elev 2631			



40 - 6

© Navitech - sbasp06aao.org0

Change: Freq.

THIS CHART IS A PART OF NAVIGRAPH NDAC AND IS INTENDED FOR FLIGHT SIMULATION USE ONLY

Sao Paulo APP				TWR	GND	ATIS
119.25	120.85	125.6	129.0	127.15	121.9	127.65
132.1	134.9	135.75	ALTN	118.05		

④ IMBEK 8 / LITRE 4 / PARANAGUA 4 / RONUT 8

TL ATC AD Elev 2631

Congonhas
D116.9 CGO

S23 37.7
W046 39.3

KELY
MAX 180kt
At 5000

S23 46.0
W046 33.5

NADI
At 5000

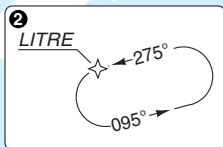
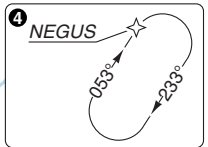
S23 44.2
W046 34.7

SULCO
MAX FL190

S23 54.0
W045 56.9

LITRE ②
S23 39.3
W045 00.4

① IMBEK 8, LITRE 4, PARANAGUA 4, RONUT 8



GNSS required

Santos
375 SAT

S23 59.0
W046 15.8

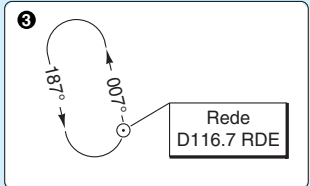
MAX 210kt
6000-FL70

Rede
D116.7 RDE

S23 53.5
W046 31.7

COMMUNICATION FAILURE

A7600
Follow IMBEK 8 / LITRE 4 / PARANAGUA 4 / RONUT 8 ARR until NADI, then intcp final APCH procedure to RWY 35L/R.



Paranagua
340 PNG

S25 32.1
W048 31.9

④ NEGUS
FL100-200

S24 30.4
W046 58.1

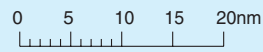
PARANAGUA 4 TR
RONUT 8 TR
IMBEK 8 TR

IMBEK
S25 03.7
W046 54.1

RONUT
S25 12.6
W047 15.1

STAR RWY 35L/R ENAV (GNSS) ①
Congonhas INTL SAO PAULO
Brazil - SBSP / CGH

40 - 7 | 24 AUG 11



THIS CHART IS A PART OF NAVIGRAPH NDAC AND IS INTENDED FOR FLIGHT SIMULATION USE ONLY

Change: Free

STAR RWY 35L/R **RNAV** (GNSS) POCOS 8 Congonhas INTL SAO PAULO

Sao Paulo APP		TWR	GND	ATIS
119.25	119.6	127.15	121.9	127.65
132.1	133.85	118.05		
TL ATC AD Elev 2631		135.75	ALTN	

TL ATC AD Elev 2631

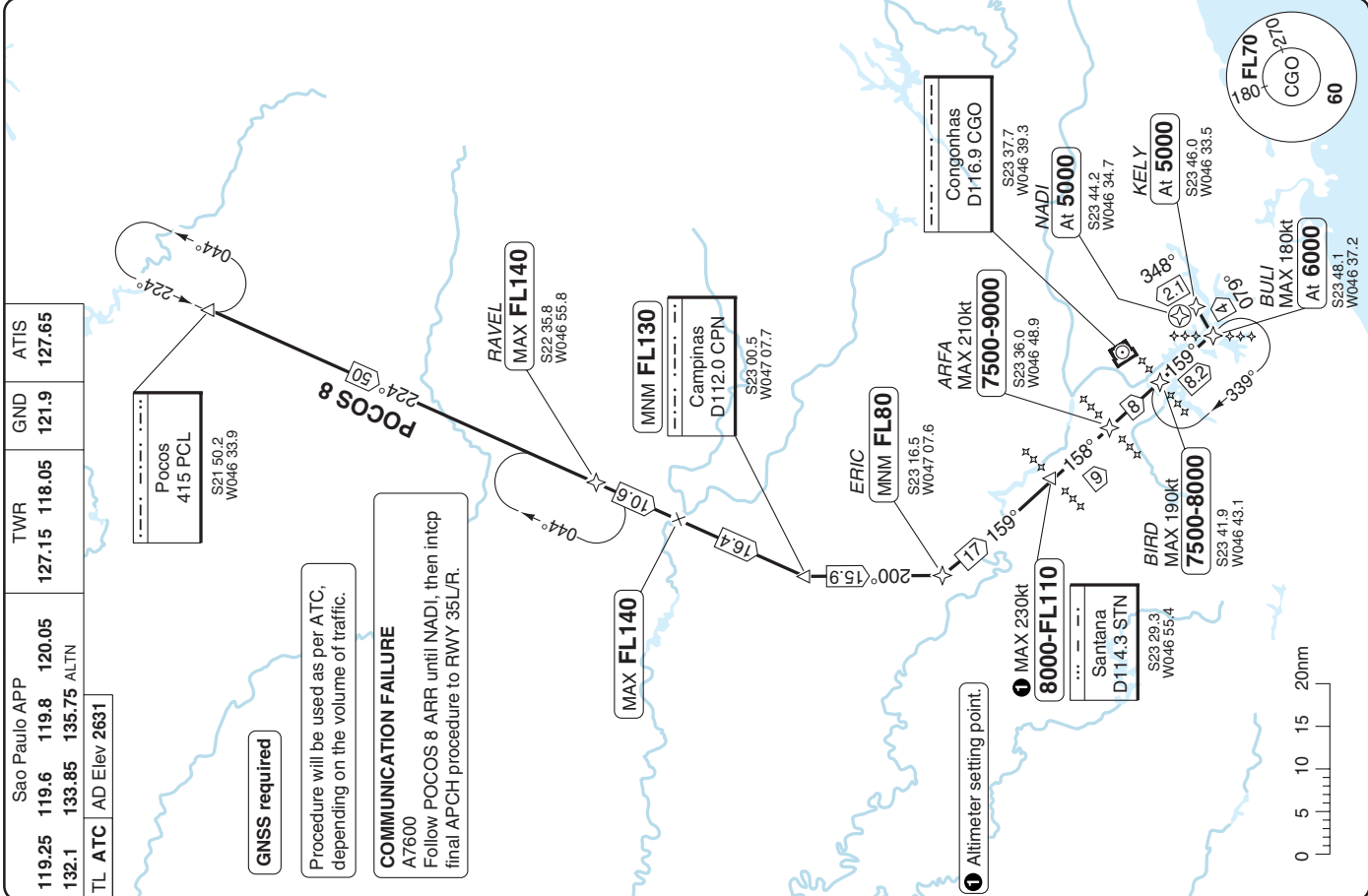
Pocos
415 PCL
S21 50.2
W046 33.9

GNSS required

Procedure will be used as per ATC, depending on the volume of traffic.

COMMUNICATION FAILURE

A7600
Follow POCOS 8 ARR until NADI, then intop final APCH procedure to RWY 35L/R.



Change: Freq:

THIS CHART IS A PART OF NAVIGRAPH NDAC AND IS INTENDED FOR FLIGHT SIMULATION USE ONLY

STAR RWY 17L/R VOR/DME ①

Congonhas INTL SAO PAULO

Sao Paulo APP				TWR		GND		ATIS	
119.25	119.6	119.8	120.05	127.15	118.05	121.9	127.65		
132.1	133.85	135.75	ALTN						

TL ATC AD Elev 2631 ① GRADE 1, PIRA 1, POCOS 1

Pirassununga
310 PSN

Pirassununga
D115.8 PIR

S21 59.1
W047 20.7

POCOS 1 TR

Pocos
415 PCL

S21 50.2
W046 33.9

NDB required

COMMUNICATION FAILURE
A7600
Follow GRADE 1 / PIRA 1 / POCOS 1 ARR until TRIP,
then intcp final APCH procedure to RWY 17L/R.

② GRADE 1 / PIRA 1 / POCOS 1

PIRA 1 TR

GRADE
MAX FL240

D64 STN
D36.6 CPN
S22 40.5
W047 40.9

RANE
MAX 250kt
FL90-120

D27 STN
D10.6 CPN
S23 08.9
W047 14.8

Campinas
D112.0 CPN

S23 00.5
W047 07.7

CELSO
FL200-220

D54 STN
D27 CPN
S22 48.1
W047 33.7

ERIC
MAX 210kt
MNM FL80

D17 STN
S23 16.5
W047 07.6

UMRAS
FL80-90

D10 STN
S23 21.7
W047 03.0

EVER
At 5200

R347/D10.7 CGO
S23 28.7
W046 45.6

MAX 180kt
6000-FL70

Santana
D114.3 STN

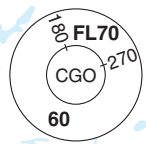
S23 29.3
W046 55.4

TRIP
At 5200

D9 CGO
S23 30.1
W046 44.6

Congonhas
D116.9 CGO

S23 37.7
W046 39.3



40 - 9

© Navitech - sbsp09aao.org

Change: Freq.

THIS CHART IS A PART OF NAVIGRAPH NDAC AND IS INTENDED FOR FLIGHT SIMULATION USE ONLY

STAR RWY 17L/R VOR/DME GRADE 3 Congonhas INTL SAO PAULO

Sao Paulo APP			TWR		GND	ATIS
119.25	119.8	120.05	127.15	118.05	121.9	127.65
132.1	133.85	135.75	ALTN			

TL ATC AD Elev 2631

GRADE

MNM FL80

R323/D36.6 CPN
D52 SCB
S22 40.5
W047 40.9

Scale distorted

Campinas
D112.0 CPN

S23 00.5
W047 07.7

NDB required

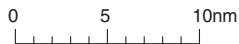
COMMUNICATION FAILURE

A7600

Follow GRADE 3 ARR until TRIP, then intop final APCH procedure to RWY 17L/R.

NOTE

Do not overfly R348 CGO.



Sorocaba
D115.2 SCB

S23 30.4
W047 22.7

R251

SKUB

MNM FL80

D16 SCB
D24.1 CPN
S23 15.6
W047 28.1



R001

33 134°

MAX 190kt
6000-FL70

Santana
D114.3 STN

S23 29.3
W046 55.4

D11.8
CGO

7 106°

Congonhas
D116.9 CGO

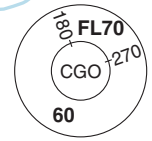
S23 37.7
W046 39.3

EVER
MAX 180kt
At 5200

R347/D10.7 CGO
S23 28.7
W046 45.6

TRIP
At 5200

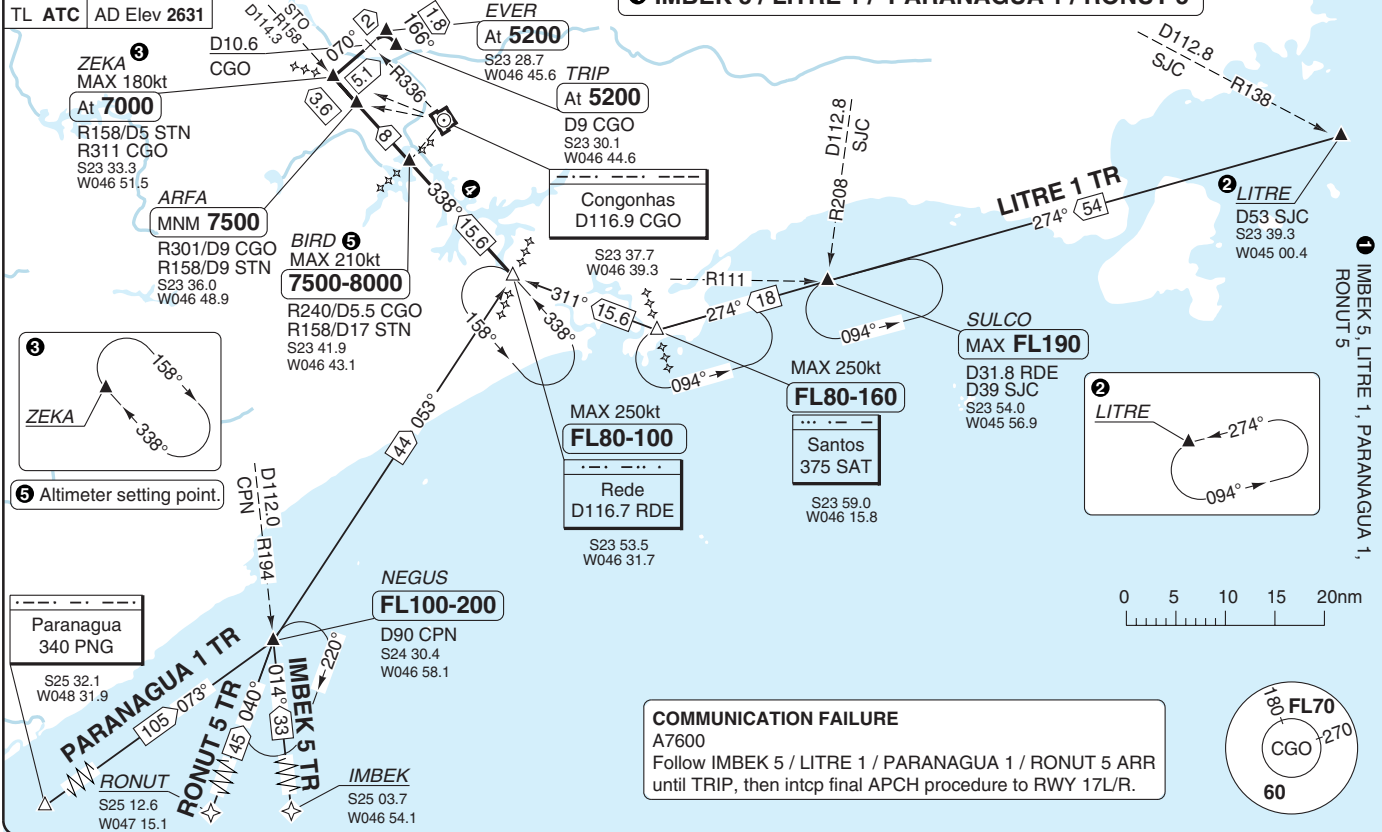
D9 CGO
S23 30.1
W046 44.6



Sao Paulo APP			TWR	GND	ATIS
119.25	120.85	125.6	127.15	121.9	127.65
129.0	134.9	135.75	118.05		
ALTN					

NDB required

4 IMBEK 5 / LITRE 1 / PARANAGUA 1 / RONUT 5



COMMUNICATION FAILURE
 A7600
 Follow IMBEK 5 / LITRE 1 / PARANAGUA 1 / RONUT 5 ARR until TRIP, then intcp final APCH procedure to RWY 17L/R.

STAR RWY 17L/R VOR/DME
 40 - 11 24 AUG 11
 Congonhas INTL SAO PAULO
 Brazil - Sbsp / CGH

THIS CHART IS A PART OF NAVIGRAPH NDAC AND IS INTENDED FOR FLIGHT SIMULATION USE ONLY

STAR RWY 17L/R VOR/DME POCOS 3 Congonhas INTL SAO PAULO

Sao Paulo APP		TWR	GND	ATIS
119.25	119.6	127.15	121.9	127.65
132.1	133.85	135.75	118.05	
ALTN				

TL ATC AD Elev 2631

Pirassununga
310 PSN
S21 59.1
W047 20.7

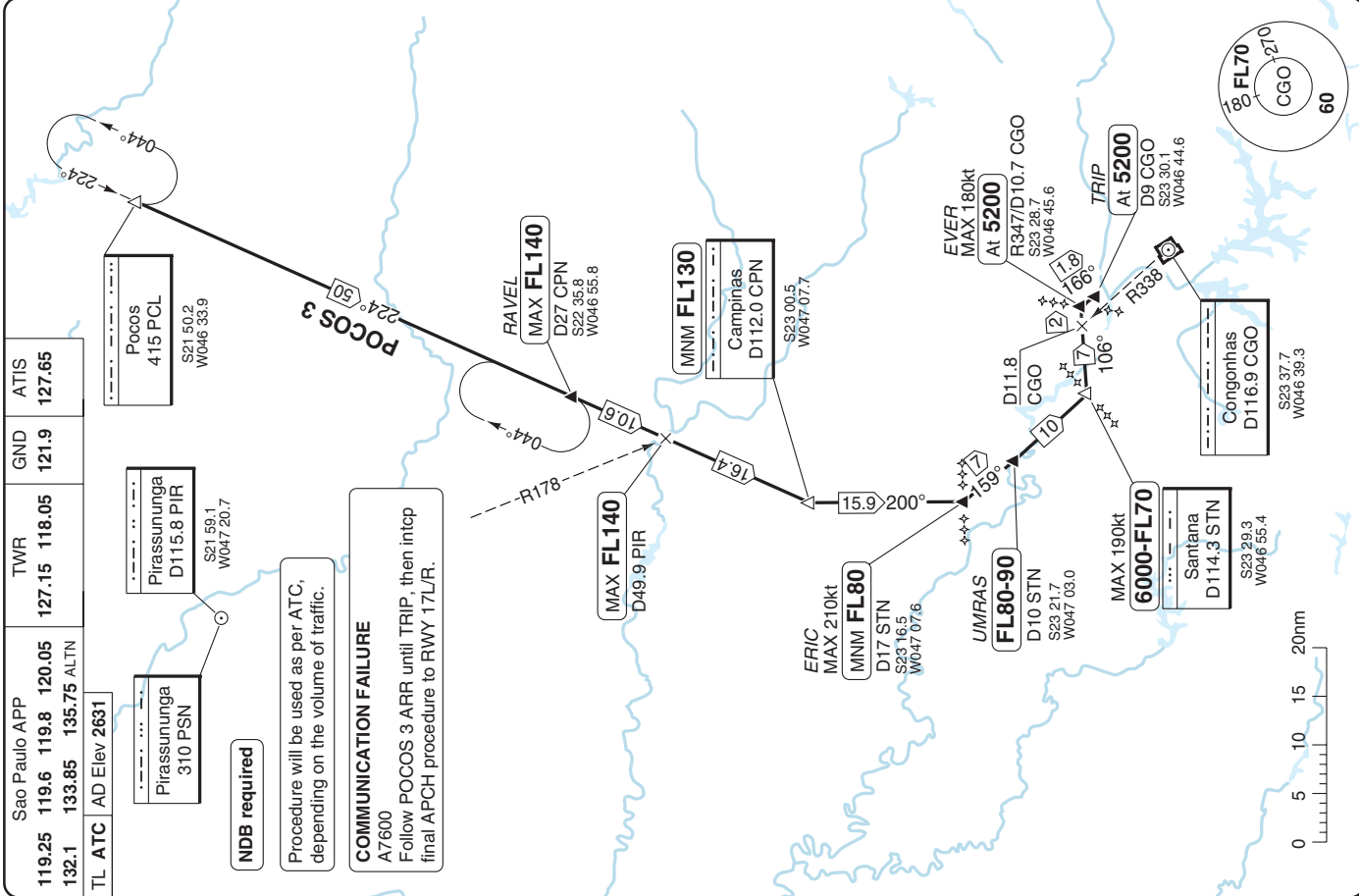
Pirassununga
D115.8 PIR
S21 59.1
W047 20.7

Pocos
415 PCL
S21 50.2
W046 33.9

NDB required

Procedure will be used as per ATC, depending on the volume of traffic.

COMMUNICATION FAILURE
A7600
Follow POCOS 3 ARR until TRIP, then intop final APCH procedure to RWY 17L/R.



STAR RWY 35L/R VOR/DME

Congonhas INTL SAO PAULO

Sao Paulo APP			TWR		GND	ATIS
119.25	119.6	119.8	127.15	118.05	121.9	127.65
120.05	133.85	135.75	ALTN			

TL ATC AD Elev 2631

① GRADE 2, PIRA 2, POCOS 2

Pocos
415 PCL

S21 50.2
W046 33.9

Pirassununga
310 PSN

Pirassununga
D115.8 PIR

S21 59.1
W047 20.7

POCOS 2 TR

NDB required

COMMUNICATION FAILURE
A7600
Follow GRADE 2 / PIRA 2 / POCOS 2 ARR until NADI,
then intcp final APCH procedure to RWY 35L/R.

② GRADE 2 / PIRA 2 / POCOS 2

③ Altimeter setting point.

PIRA 2 TR / POCOS 2 TR

224° (38)

GRADE
MAX FL240

D64 STN
D36.6 CPN
S22 40.5
W047 40.9

RANE
MAX 250kt
FL90-120

D27 STN
D10.6 CPN
S23 08.9
W047 14.8

Campinas
D112.0 CPN

S23 00.5
W047 07.7

CELSO
FL200-220

D54 STN
D27 CPN
S22 48.1
W047 33.7

ERIC
MNM FL80

D17 STN
S23 16.5
W047 07.6

ARFA
MAX 210kt
7500-9000

R301/D9 CGO
S23 36.0
W046 48.9

Congonhas
D116.9 CGO

S23 37.7
W046 39.3

8000-FL110

Santana
D114.3 STN

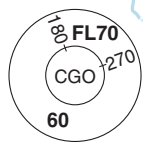
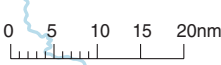
S23 29.3
W046 55.4

NADI
At 5000

S23 44.2
W046 34.7

KELY
At 5000

S23 46.0
W046 33.5



BIRD
7500-8000

R240/D5.5 CGO
S23 41.9
W046 43.1

BULI
MAX 180kt
At 6000

R190/D10.6 CGO
R338/D8 RDE
S23 48.1
W046 37.2

R154/D25.6 STN
R352/D7.2 RDE

D116.7 RDE

STAR RWY 35L/R VOR/DME GRADE 4 Congonhas INTL SAO PAULO

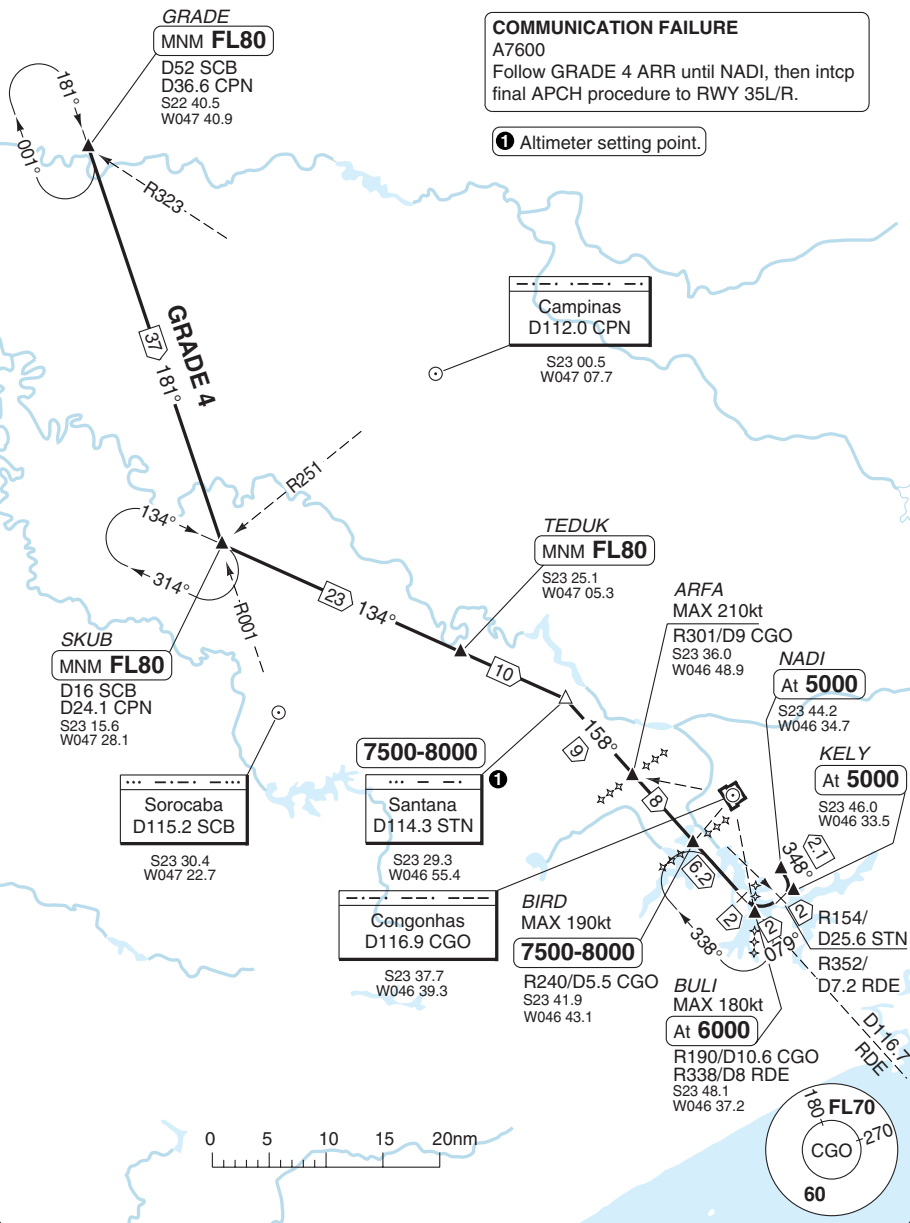
Sao Paulo APP			TWR	GND	ATIS	
119.25	119.8	120.05	127.15	118.05	121.9	127.65
132.1	133.85	135.75	ALTN			
TL	ATC	AD Elev 2631				

NDB required

COMMUNICATION FAILURE
 A7600
 Follow GRADE 4 ARR until NADI, then intcp final APCH procedure to RWY 35L/R.

① Altimeter setting point.

40 - 14



© Navitech - sbbsp14aacorg0

Change: Freq.

THIS CHART IS A PART OF NAVIGRAPH NDAC AND IS INTENDED FOR FLIGHT SIMULATION USE ONLY

© Navtech - sbsp15aorg0

Sao Paulo APP			TWR	GND	ATIS
119.25	120.85	125.6	127.15	121.9	127.65
129.0	134.9	135.75	118.05		
ALTN					

IMBEK 6 / LITRE 2 / PARANAGUA 2 / RONUT 6

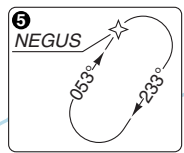
TL ATC AD Elev 2631

NDB required

Congonhas
D116.9 CGO

NADI
At **5000**
D8 CGO
S23 37.7
W046 39.3

KELY
MAX 180kt
At **5000**
S23 46.0
W046 33.5



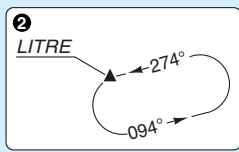
Paranagua
340 PNG
S25 32.1
W048 31.9

5 NEGUS
FL100-200
D90 CPN
S24 30.4
W046 58.1

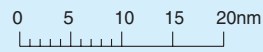
MAX 210kt
6000-FL70
Rede
D116.7 RDE
S23 53.5
W046 31.7

MAX 250kt
FL80-130
Santos
375 SAT
S23 59.0
W046 15.8

SULCO
MAX FL190
D31.8 RDE
D39 SJC
S23 54.0
W045 56.9



COMMUNICATION FAILURE
A7600
Follow IMBEK 6 / LITRE 2 / PARANAGUA 2 / RONUT 6 ARR until NADI, then intcp final APCH procedure to RWY 35L/R.

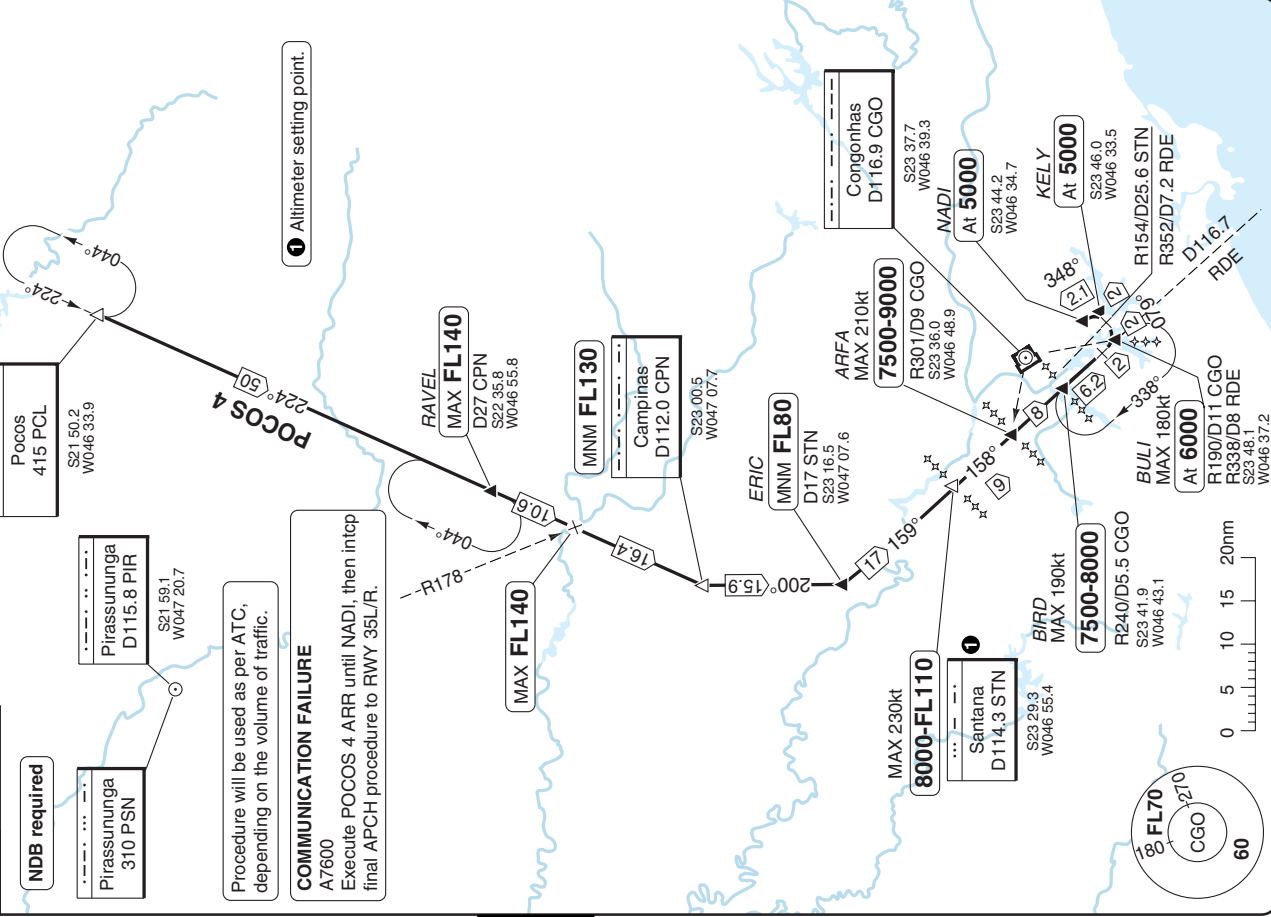


THIS CHART IS A PART OF NAVIGRAPH NDAC AND IS INTENDED FOR FLIGHT SIMULATION USE ONLY

Change: Fee-

STAR RWY 35L/R VOR/DME POCOS 4 Congonhas INTL SAO PAULO

Sao Paulo APP		TWR	GND	ATIS
119.25	119.6	119.8	120.05	127.15
118.05	118.05	118.05	121.9	127.65
TL ATC		AD Elev 2631		
132.1	133.85	135.75	ALTN	

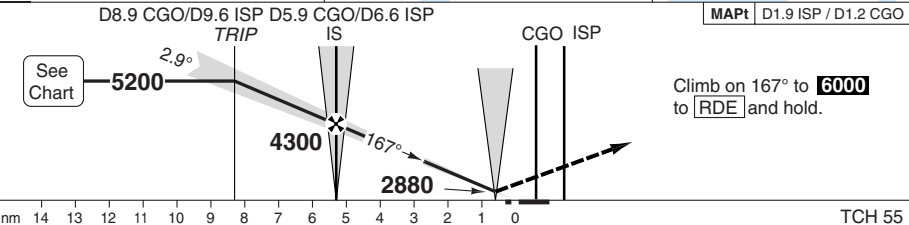
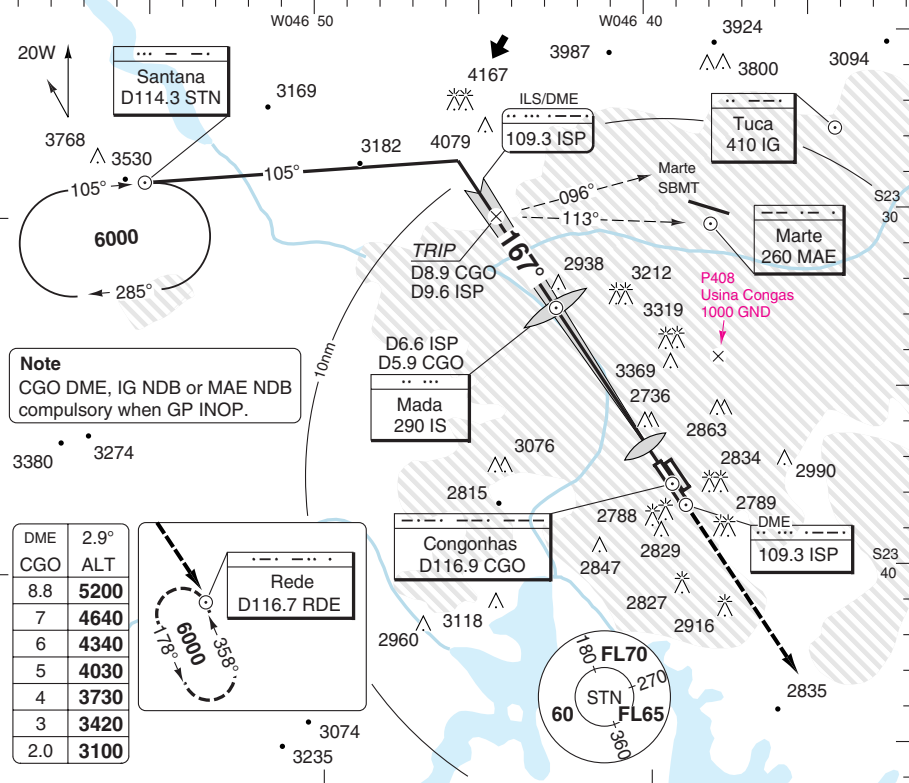


ILS RWY 17R HOTEL 1

Congonhas INTL SAO PAULO

Sao Paulo APP					TWR	GND	ATIS		
119.25	119.6	119.8	120.05	129.0	127.15	121.9	127.65		
129.75	132.1	133.85	134.9	135.75	118.05			ALTN	

ILS/DME	109.3	ISP	FAT	167°	TDZ Elev	2589	AD Elev	2631	TL ATC	TA	6000
---------	-------	-----	-----	------	----------	------	---------	------	--------	----	------



nm	14	13	12	11	10	9	8	7	6	5	4	3	2	1	0	TCH	55		
ACFT																DME	2.9°	LDA 1810x45	
A																ISP	ALT	5938x147ft	
B	2820	(231)														9.6	5200		FALS
C	1.2km														8	4730			
D			3100 (511)	3430 (799)												7	4430		
		2.0km	3100 (511)	3430 (799)												6	4120		
		2.4km	3100 (511)	3430 (799)												5	3820		
			2.4km	3100 (511)	3430 (799)												4		
GS	80	100	120	140	160											3	3210		
ROD 2.9°	410	510	610	720	820											2.6	3100		
FAF-MAPt	3:29	2:47	2:19	1:59	1:44														

© Navtech - sbasp01iaip00

Change: Freq, Elev, Minima

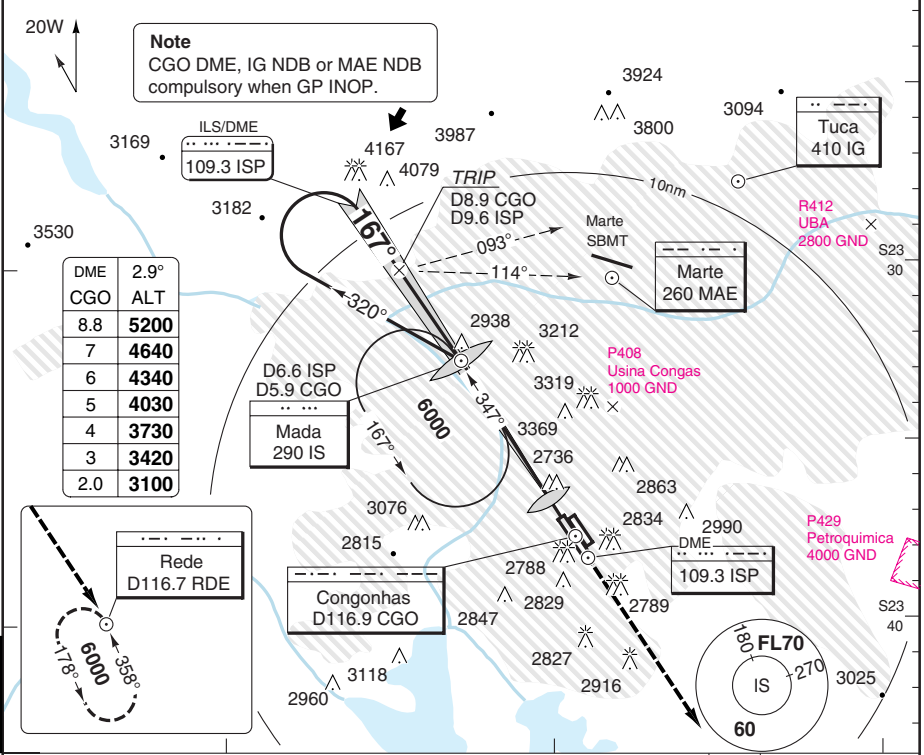
THIS CHART IS A PART OF NAVIGRAPH NDAC AND IS INTENDED FOR FLIGHT SIMULATION USE ONLY

ILS RWY 17R HOTEL 2

Congonhas INTL SAO PAULO

Sao Paulo APP						TWR	GND	ATIS
119.25	119.8	129.0	129.75	132.1	133.85	127.15	121.9	127.65
134.9	119.6	ALTN 120.05	ALTN 135.75	ALTN		118.05		

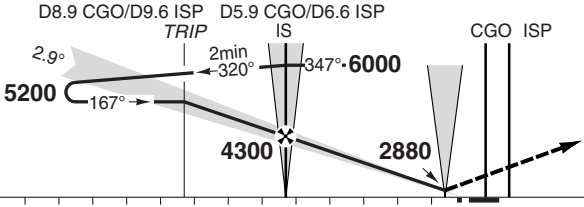
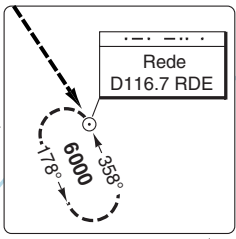
ILS/DME	109.3	ISP	FAT	167°	TDZ Elev	2589	AD Elev	2631	TL ATC	TA	6000
---------	-------	-----	-----	------	----------	------	---------	------	--------	----	------



PANS OPS

50 - 2

DME	2.9°	ALT
CGO	8.8	5200
	7	4640
	6	4340
	5	4030
	4	3730
	3	3420
	2.0	3100



Climb on 167° to **6000**
to [RDE] and hold.

nm 13 12 11 10 9 8 7 6 5 4 3 2 1 0 TCH 55

ACFT	ILS	LOC+DME	Circling
A		3100 (511) 1.6km	3430 (799) 1.6km
B	2820 (231) 1.2km		3430 (799) 2.0km
C		3100 (511) 2.0km	3430 (799) 3.6km
D		3100 (511) 2.4km	3430 (799) 4.0km
GS	80	100	120 140 160
ROD 2.9°	410	510	610 720 820
FAF-MAPt	3:29	2:47	2:19 1:59 1:44

RWY 35L/35R: West of AD.
ILS: 200ft
LOC+DME: 500ft
Circling: 800ft

DME	2.9°	LDA 1810x45
ISP	ALT	5938x147ft
9.6	5200	
8	4730	
7	4430	
6	4120	
5	3820	
4	3510	
3	3210	
2.6	3100	

© Navtech - sbbsp02aip00

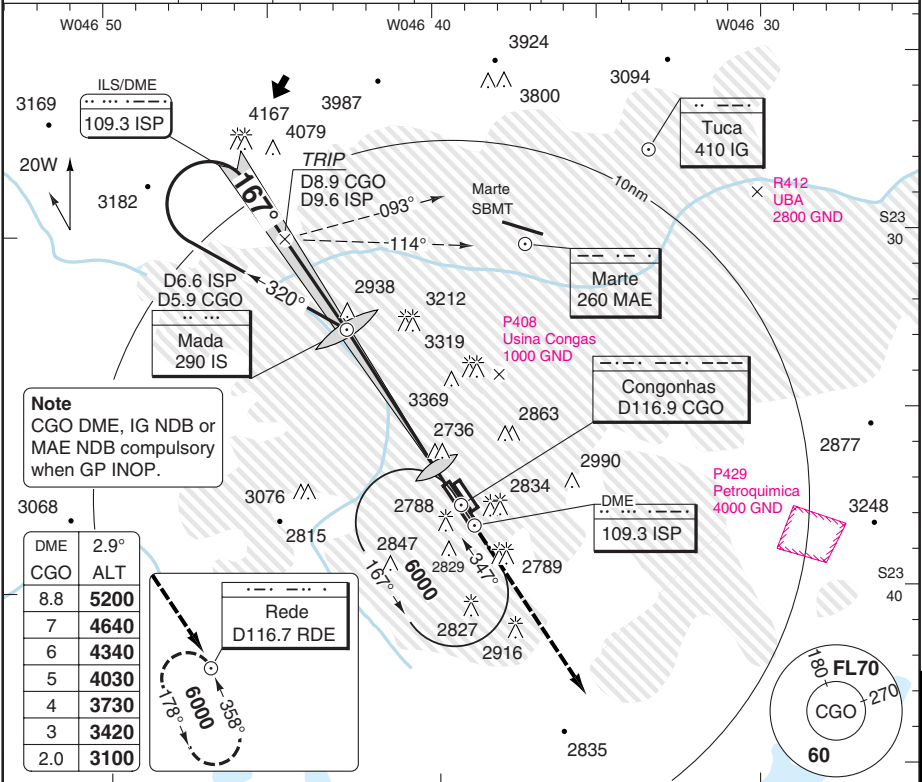
Change: Freq, Elev, minima

THIS CHART IS A PART OF NAVIGRAPH NDAC AND IS INTENDED FOR FLIGHT SIMULATION USE ONLY

ILS RWY 17R HOTEL 3

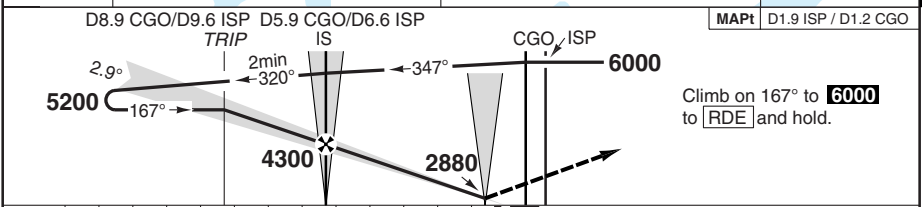
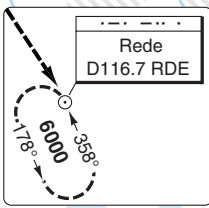
Congonhas INTL SAO PAULO

Sao Paulo APP					TWR	GND	ATIS	
119.25	119.8	129.0	129.75	132.1	133.85	127.15	121.9	127.65
134.9	119.6	ALTN	120.05	ALTN	135.75	ALTN	118.05	
ILS/DME 109.3 ISP		FAT 167°	TDZ Elev 2589	AD Elev 2631	TL ATC	TA 6000		



Note
CGO DME, IG NDB or MAE NDB compulsory when GP INOP.

DME	2.9°
CGO	ALT
8.8	5200
7	4640
6	4340
5	4030
4	3730
3	3420
2.0	3100



nm						TCH 55					
ACFT	ILS	LOC+DME	Circling A		A RWY 35L/35R: West of AD. ILS: 200ft LOC+DME: 500ft Circling: 800ft	DME	2.9°	LDA 1810x45	P G FALS		
A	2820 (231)	3100 (511) 1.6km	3430 (799) 1.6km			9.6	5200	5938x147ft			
B			3430 (799) 2.0km			8	4730				
C		3100 (511) 1.2km	3430 (799) 2.0km			7	4430				
D		3100 (511) 2.4km	3430 (799) 4.0km			6	4120				
GS	80	100	120	140	160	5	3820				
ROD 2.9°	410	510	610	720	820	4	3510				
FAF-MAPt	3:29	2:47	2:19	1:59	1:44	3	3210				
						2.6	3100				

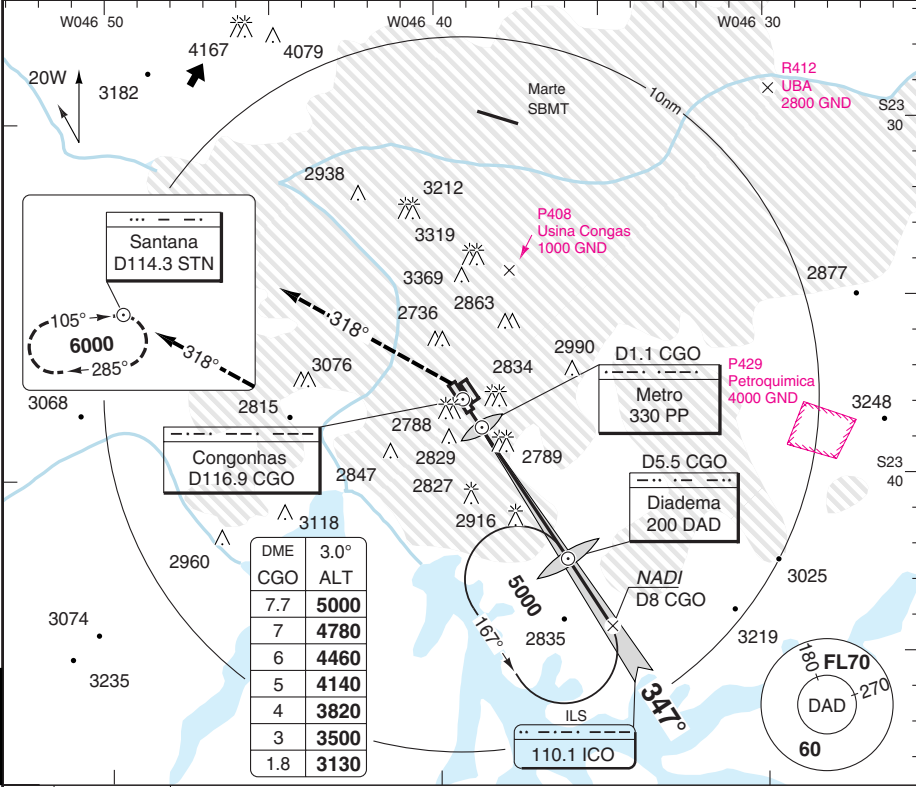
© Navtech - sbbsp03iaip00

50 - 3

ILS RWY 35L HOTEL 4

Congonhas INTL SAO PAULO

Sao Paulo APP				TWR	GND	ATIS
119.25	119.8	132.1	134.1	127.15	121.9	127.65
134.9	119.6	120.05	135.75	ALTN	118.05	
ILS 110.1	ICO	FAT 347°	TDZ Elev 2629	AD Elev 2631	TL ATC	TA 6000

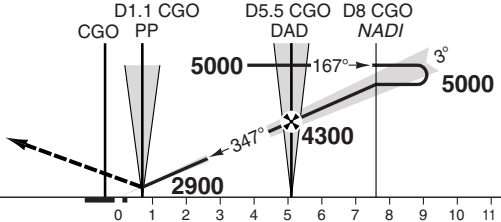


PANS OPS

50 - 4

MAPt D1.1 CGO / PP

Turn left to 318°/R138
[STN], climbing to **6000**
to [STN] and hold.



TCH 54

ACFT	ILS	LOC	Circling a
A		3130 (501) 1.6km	3430 (799) 1.6km
B	2840 (203) 1.2km	3130 (501) 1.6km	3430 (799) 2.0km
C		3130 (501) 2.4km	3430 (799) 3.6km
D			3430 (799) 4.0km

GS	80	100	120	140	160	LDA 1880x45 6167x147ft
ROD 3.0°	430	540	640	750	860	
FAF +20s	4160	4130	4090	4060	4020	
+40s	4020	3950	3880	3810	3740	
+60s	3880	3770	3660	3560	3450	
FAF- 3130	2:44	2:11	1:50	1:34	1:22	
FAF-MAPt	3:18	2:38	2:12	1:53	1:39	

a RWY 17R/17L: West of AD.

△ ILS: 200ft, LOC: 500ft
Circling: 800ft

Change: Freq, Elev, Minima

© Navtech - sbbsp04iap00

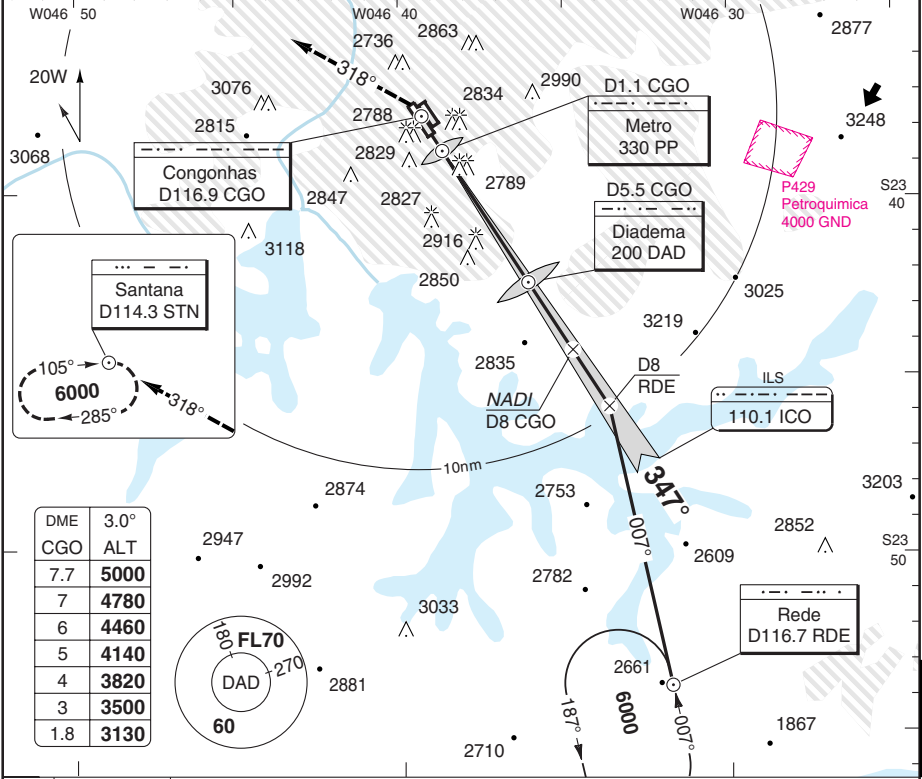
NALS

ILS RWY 35L HOTEL 5

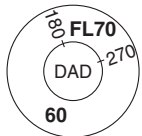
Congonhas INTL SAO PAULO

Sao Paulo APP					TWR	GND	ATIS	
119.25	119.6	119.8	120.05		127.15	121.9	127.65	
132.1	134.1	134.9	135.75	ALTN	118.05			

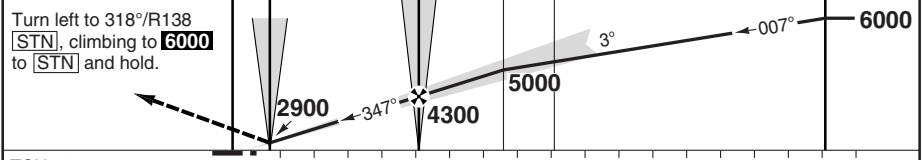
ILS 110.1	ICO	FAT 347°	TDZ Elev 2629	AD Elev 2631	TL ATC	TA 6000
-----------	-----	----------	---------------	--------------	--------	---------



DME	3.0°
CGO	ALT
7.7	5000
7	4780
6	4460
5	4140
4	3820
3	3500
1.8	3130



MAPt	D1.1 CGO / PP	D1.1 CGO	D5.5 CGO	D8 CGO	D8	RDE
------	---------------	----------	----------	--------	----	-----



TCH 54

ACFT	ILS	LOC	Circling ^a
A		3130 (501) 1.6km	3430 (799) 1.6km
B	2840 (203) 1.2km	3430 (799) 2.0km	3430 (799) 2.0km
C		3130 (501) 2.4km	3430 (799) 3.6km
D			3430 (799) 4.0km

GS	80	100	120	140	160	LDA 1880x45 6167x147ft
ROD 3.0°	430	540	640	750	860	
FAF +20s	4160	4130	4090	4060	4020	
+40s	4020	3950	3880	3810	3740	
+60s	3880	3770	3660	3560	3450	
FAF-3130	2:44	2:11	1:50	1:34	1:22	
FAF-MAPt	3:18	2:38	2:12	1:53	1:39	

^a RWY 17R/17L: West of AD.

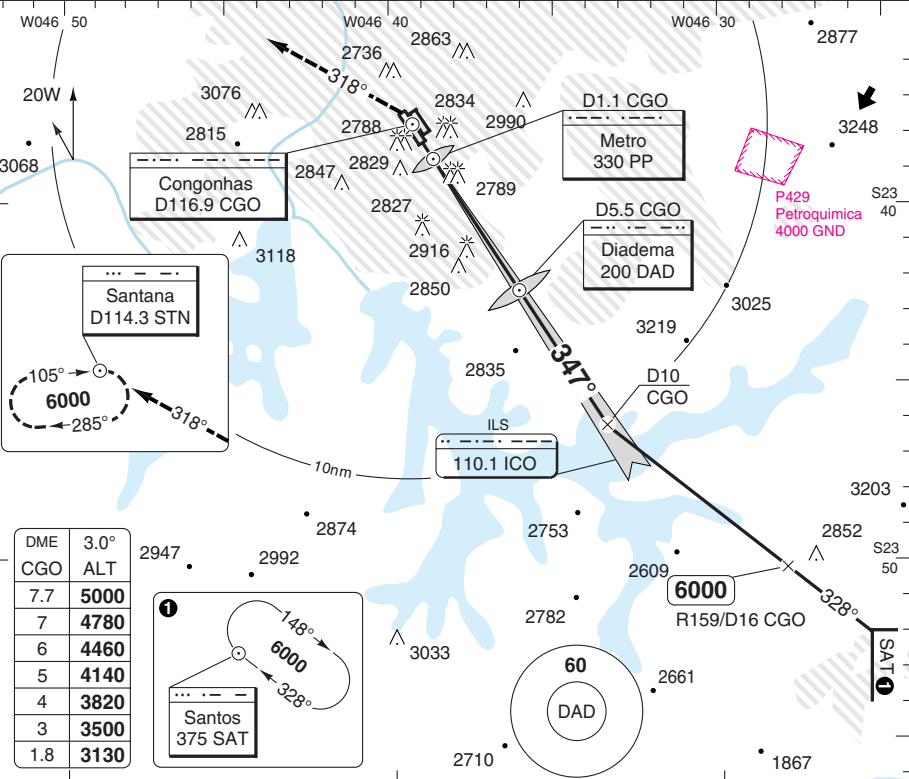
△ ILS: 200ft, LOC: 500ft, Circling: 800ft

Change: Freq, Elev, Minima

ILS RWY 35L HOTEL 6

Congonhas INTL SAO PAULO

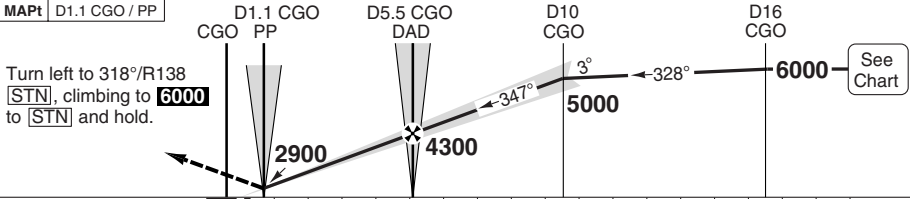
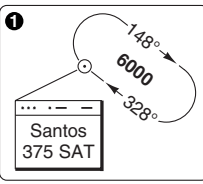
Sao Paulo APP				TWR	GND	ATIS
119.25	119.6	119.8	132.1	127.15	121.9	127.65
134.9	120.05	135.75	ALTN	118.05		
ILS 110.1	ICO	FAT 347°	TDZ Elev 2629	AD Elev 2631	TL ATC	TA 6000



PANS OPS

50 - 6

DME CGO	3.0° ALT
7.7	5000
7	4780
6	4460
5	4140
4	3820
3	3500
1.8	3130



TCH 54		0 1 2 3 4 5 6 7 8 9 10 11 12 13 14 15 16 17 18 nm									
ACFT	ILS	LOC	Circling ^a	GS	80	100	120	140	160	LDA 1880x45 6167x147ft P (61)	
A		3130 (501)	3430 (799) 1.6km	430	540	640	750	860			
B	2840 (203)	1.2km	3430 (799) 2.0km	4160	4130	4090	4060	4020			
C		3130 (501)	3430 (799) 3.6km	4020	3950	3880	3810	3740			
D		2.4km	3430 (799) 4.0km	3880	3770	3660	3560	3450			
				FAF-3130	2:44	2:11	1:50	1:34	1:22		
				FAF-MAPT	3:18	2:38	2:12	1:53	1:39		

^a RWY 17R/17L: West of AD.
 ILS: 200ft, LOC: 500ft
 Circling: 800ft

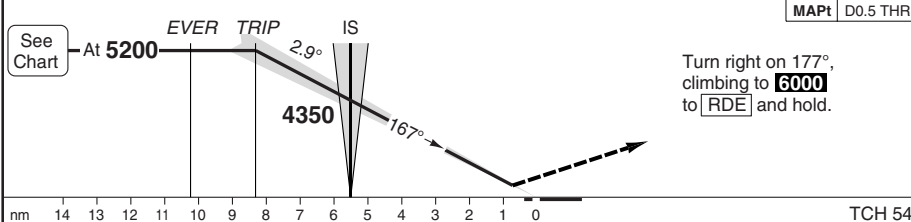
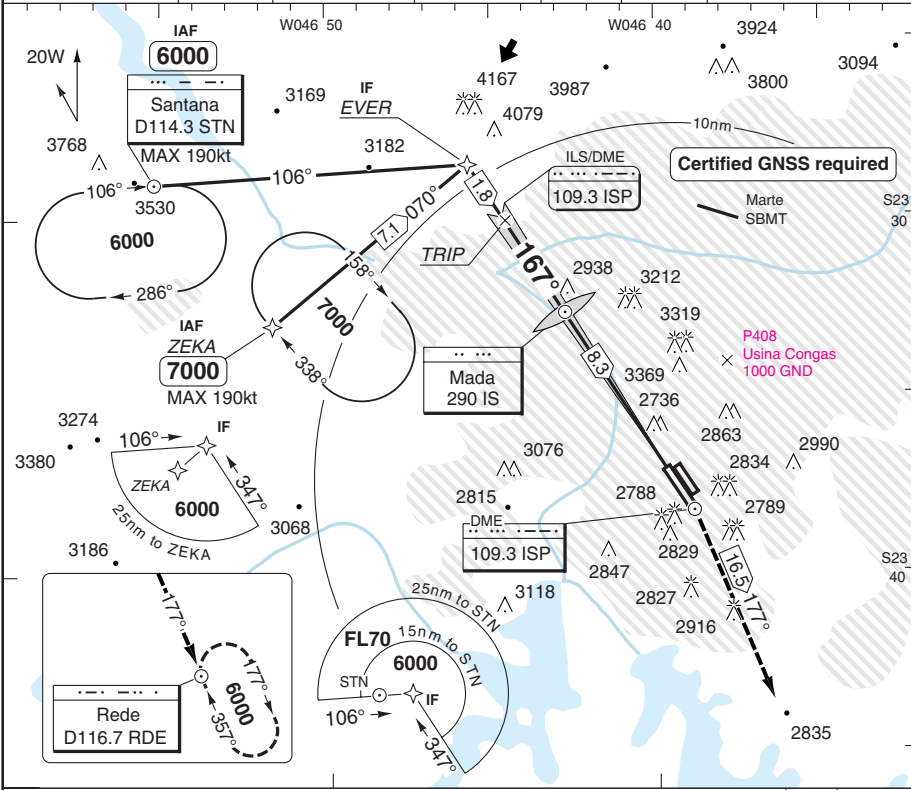
NALS

© Navtech - sbbsp06iaip00

ILS Z RWY 17R

Congonhas INTL SAO PAULO

Sao Paulo APP				TWR	GND	ATIS	
119.8	125.6	129.75	132.1	133.85	127.15	121.9	127.65
134.9	135.75	119.6	ALTN 120.05	ALTN 118.05			
ILS/DME	109.3	ISP	FAT 167°	TDZ Elev 2589	AD Elev 2631	TL ATC	TA 6000



EU OPS ACFT A B C D	ILS 2790 (200) 0.8km a △ 200ft	Note: Circling NA a Values shown are RVR or Vis △ 200ft	LDA 1810x45 5938x147ft P G I FALS

© Navtech - sbasp07iaip00

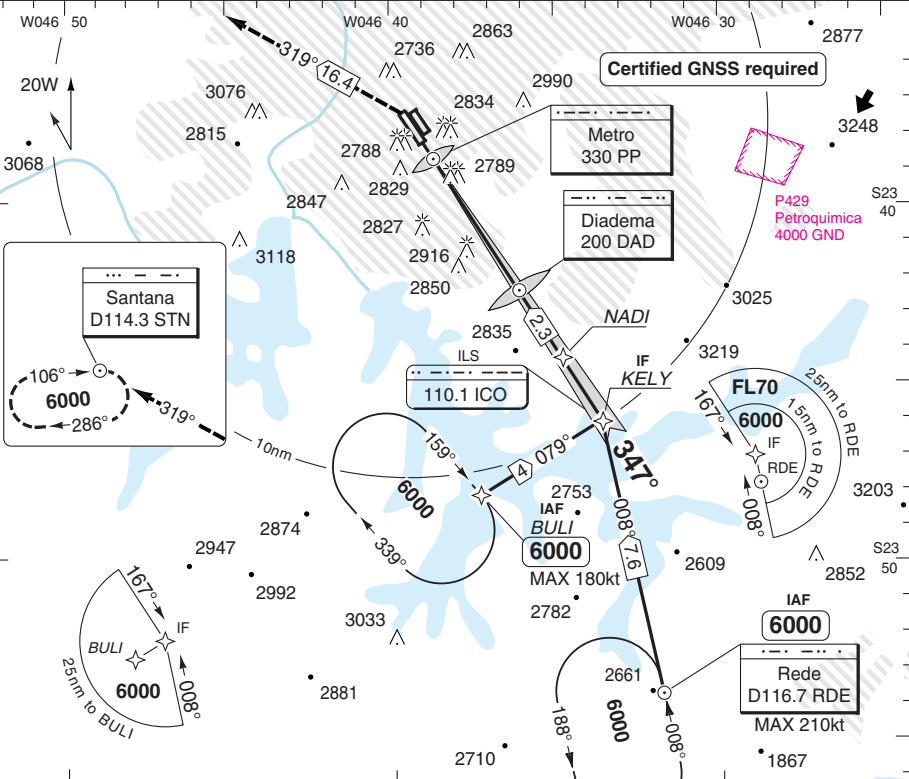
50-7

ILS Z RWY 35L

Congonhas INTL SAO PAULO

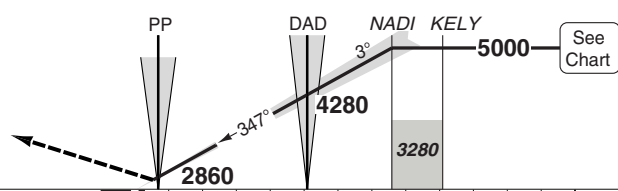
Sao Paulo APP				TWR	GND	ATIS	
119.8	125.6	129.75	132.1	133.85	127.15	121.9	127.65
134.9	135.75	119.6	ALTN 120.05	ALTN 118.05			

ILS 110.1	ICO	FAT 347°	TDZ Elev 2629	AD Elev 2631	TL ATC	TA 6000
-----------	-----	----------	---------------	--------------	--------	---------



MAPt	D0.5 THR
------	----------

Climb to **6000**. Turn left to 319°/R139 [STN] to [STN] and hold.



TCH 54	0	1	2	3	4	5	6	7	8	9	10	11	12	13	nm
--------	---	---	---	---	---	---	---	---	---	---	----	----	----	----	----

ACFT	ILS	Note: Circling NA
A		△ 200ft
B	2830 (200)	
C	1.2km △	
D		

LDA 1880x45
6167x147ft
P
G
T

50 - 8

© Navtech - sbbsp08iaip00

NALS

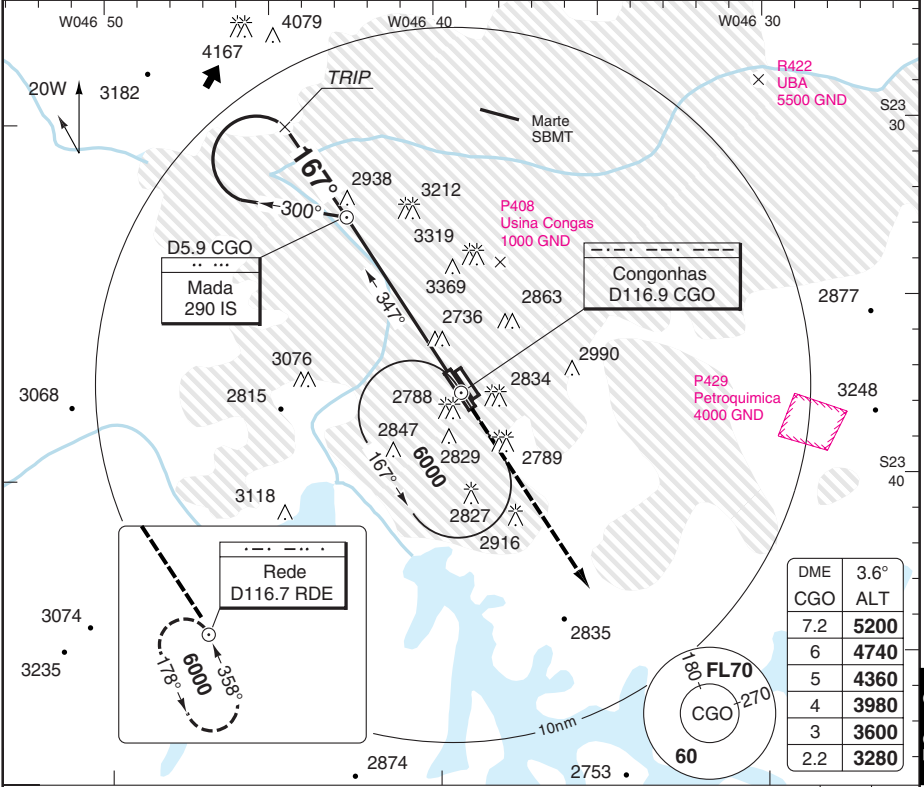
Change: Freq, Elev, Minima

THIS CHART IS A PART OF NAVIGRAPH NDAC AND IS INTENDED FOR FLIGHT SIMULATION USE ONLY

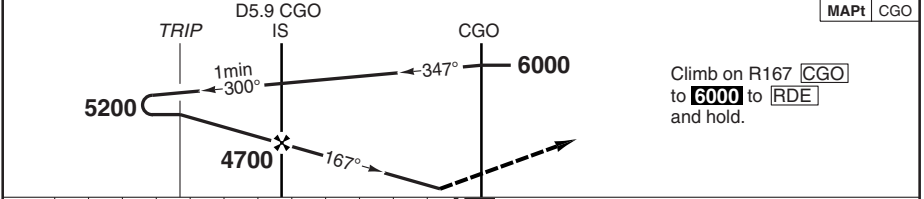
VOR RWY 17L/R INDIA 1

Congonhas INTL SAO PAULO

Sao Paulo APP					TWR	GND	ATIS		
119.25	119.8	129.0	129.75	132.1	127.15	121.9	127.65		
133.85	134.9	119.6	120.05	135.75	118.05				
VOR/DME 116.9 CGO					FAT 167°	THR Elev 17L 2590 / TDZ Elev 17R 2589	AD Elev 2631	TL ATC	TA 6000



DME	3.6°
CGO	ALT
7.2	5200
6	4740
5	4360
4	3980
3	3600
2.2	3280



nm	12	11	10	9	8	7	6	5	4	3	2	1	0
ACFT	VOR+DME a		VOR+DME b		GS					LDA 1435x45 4707x147ft	LDA 1810x45 5938x147ft		
A	3280 (690)	3280 (691)	80	100	120	140	160						
B	1.6km	1.6km	ROD 3.6°	510	640	770	890	1020					
C	3280 (690)	3280 (691)	FAF +20s	4540	4490	4450	4410	4370					
D	2.8km	2.8km	+40s	4370	4280	4200	4110	4030					
	3.2km	3.2km	+60s	4200	4070	3940	3820	3690					
			FAF-3280	2:47	2:14	1:52	1:35	1:23					

a RWY 17L
 b RWY 17R
 Note: Circling see 51-1

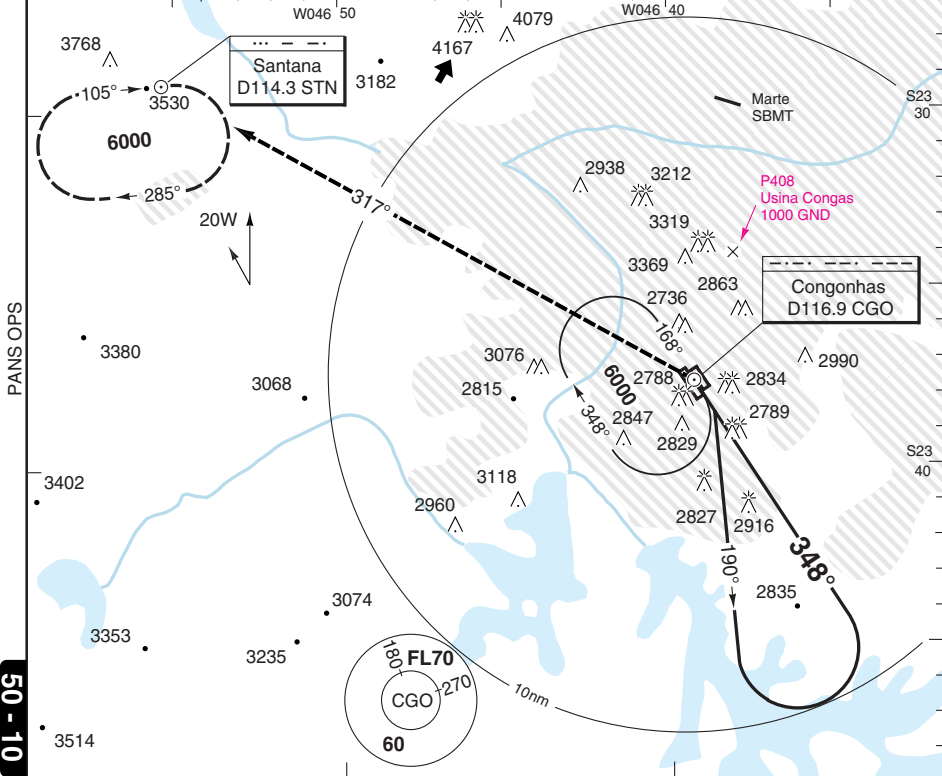
© Navtech - sbbsp09iaip00

50 - 9

VOR RWY 35L/R INDIA 2

Congonhas INTL SAO PAULO

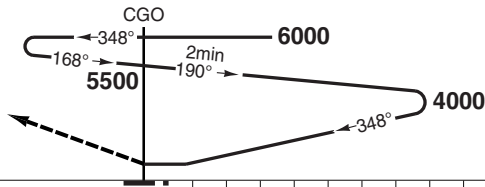
Sao Paulo APP					TWR	GND	ATIS	
119.25	119.8	129.0	129.75	132.1	133.85	127.15	121.9	127.65
134.9	119.6	ALTN	120.5	ALTN	135.75	ALTN	118.05	
VOR/DME	116.9	CGO	FAT 348°	TDZ Elev 35L	2629	THR Elev 35R	2629	AD Elev 2631
								TL ATC
								TA 6000



50 - 10

MAPt CGO

Turn left to 317°/R137
 [STN], climbing to **6000**
 to [STN] and hold.



ACFT	VOR	VOR	Circling	Circling
A	3300 (671) 3.1km	3300 (671) 3.3km	3430 (799) 3.1km	3430 (799) 3.3km
B		3300 (671) 3.5km	3430 (799) 3.6km	3430 (799) 3.6km
C	3300 (671) 3.2km		3430 (799) 4.0km	3430 (799) 4.0km
D				

LDA 1880x45 6167x147ft	LDA 1435x45 4707x147ft
P CG 35L	G 35R
NALS	NALS

a Non CDFA. VOR: 700ft
b RWY 17R/17L: West of AD. Circling: 800ft

© Navtech - sbbsp10aip00

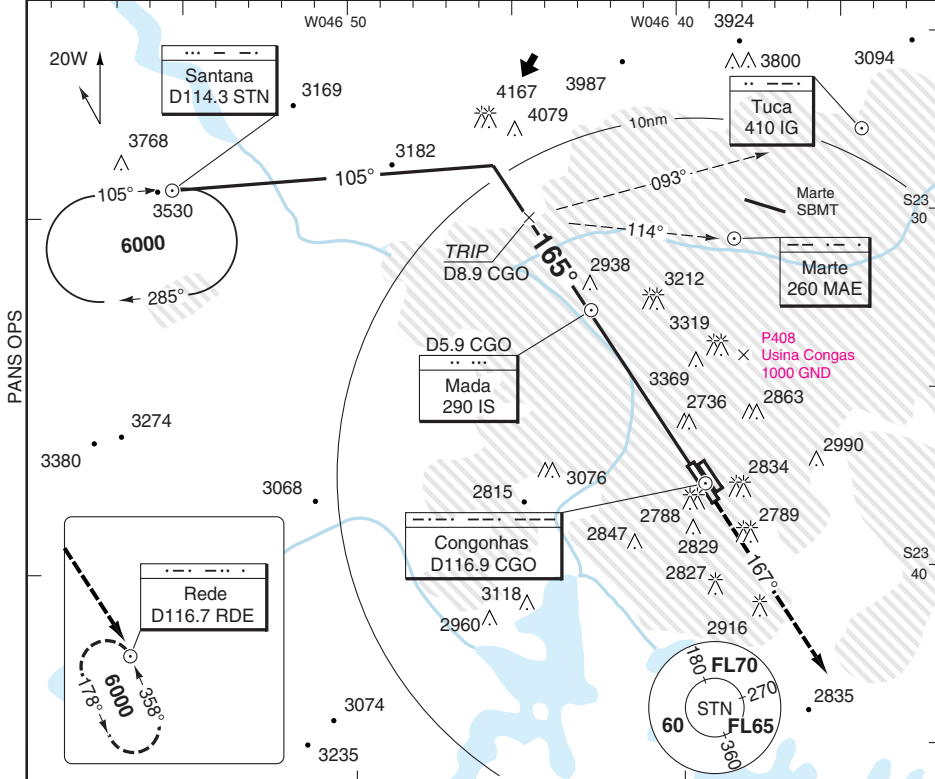
Change: Freq, Elev, Minima

THIS CHART IS A PART OF NAVIGRAPH NDAC AND IS INTENDED FOR FLIGHT SIMULATION USE ONLY

VOR RWY 17R VOR X

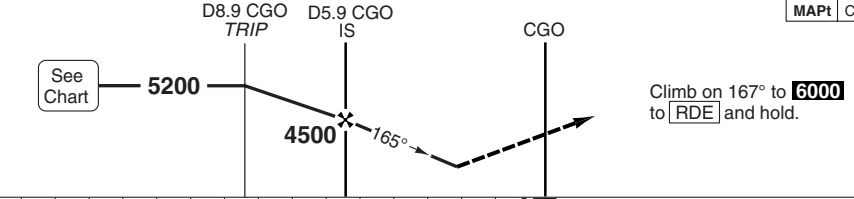
Congonhas INTL SAO PAULO

Sao Paulo APP					TWR	GND	ATIS	
119.25	129.0	129.75	132.1	133.85	127.15	121.9	127.65	
134.9	119.6	120.05	135.75	ALTN	118.05			
VOR/DME	116.9 CGO	FAT 165°	TDZ Elev 2589	AD Elev 2631	TL ATC	TA 6000		



PANS OPS

50 - 11



nm	15	14	13	12	11	10	9	8	7	6	5	4	3	2	1	0
ACFT	VOR+DME		Circling		RWY 35L/35R: West of AD.											
A	3280 (691) 1.6km		3430 (799) 1.6km		VOR: 700ft Circling: 800ft											
B	3280 (691) 2.8km		3430 (799) 2.0km													
C	3280 (691) 3.2km		3430 (799) 3.6km													
D	3280 (691) 3.2km		3430 (799) 4.0km													
GS	80	100	120	140	160											
ROD 3.2°	460	580	690	810	920											
DME CGO	3.2° ALT	LDA 1810x45 5938x147ft														
7.9	5200															
6	4880															
5	4540															
4	4190															
3	3850															
2.4	3280															

© Navtech - sbsp11aip00

FALS

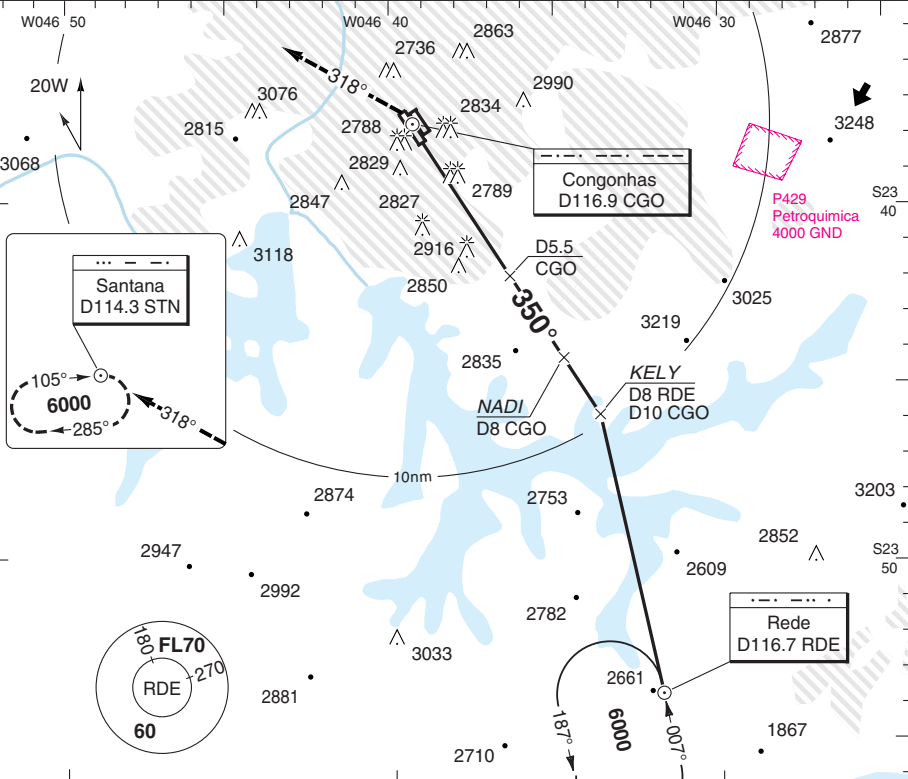
Change: Freq, Elev

THIS CHART IS A PART OF NAVIGRAPH NDAC AND IS INTENDED FOR FLIGHT SIMULATION USE ONLY

VOR RWY 35L VOR Y

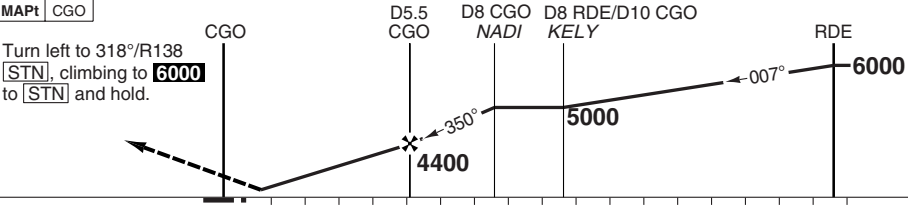
Congonhas INTL SAO PAULO

Sao Paulo APP			TWR	GND	ATIS
119.25	132.1	134.9	127.15	121.9	127.65
119.6 120.05 135.75 ALTN			118.05		
VOR/DME 116.9 CGO	FAT 350°	TDZ Elev 2629	AD Elev 2631	TL ATC	TA 6000



PANS OPS

50 - 12



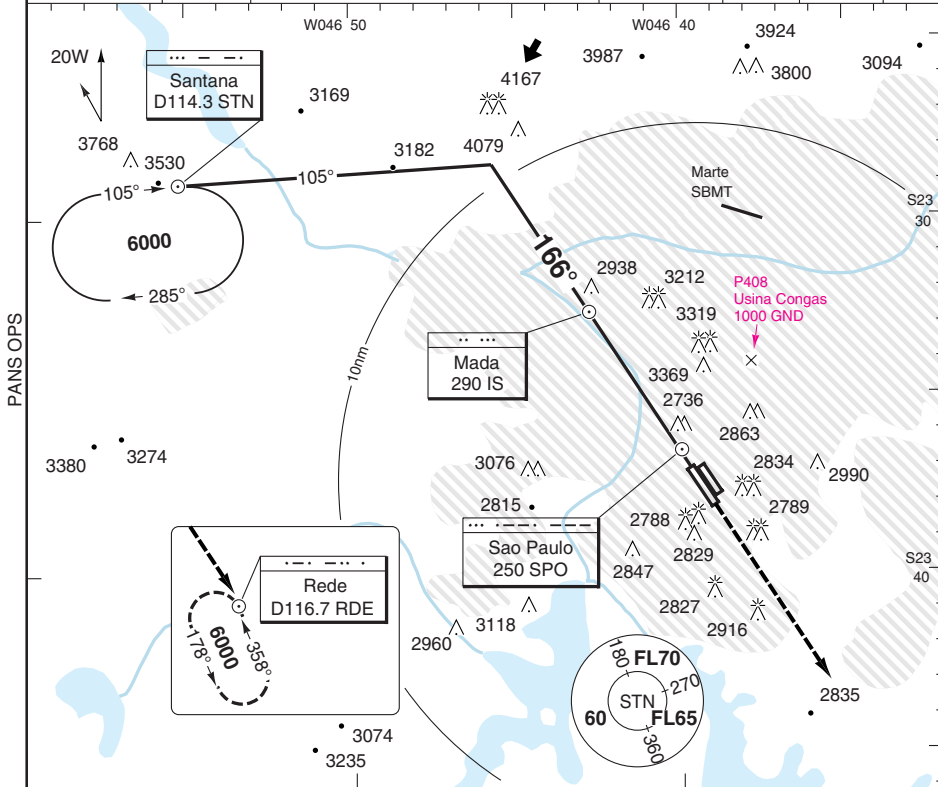
ACFT	VOR+DME	Circling	RWY 17R/17L: West of AD.		DME	3.2°	LDA 1880x45
A	3300 (671)	3430 (799)	VOR: 700ft		CGO	ALT	6167x147ft
B	1.6km	1.6km (799)	Circling: 800ft		7.3	5000	P G
C	3300 (671)	3430 (799)			6	4580	
D	3300 (671)	3430 (799)			5	4240	
	2.8km	3.6km (799)			4	3900	
	3.2km	4.0km (799)			3	3560	
					2.3	3300	NALS
GS	80	100	120	140	160		
ROD 3.2°	460	570	690	800	910		

© Navtech - sbbsp12aip00

NDB RWY 17L/R JULIETT 1

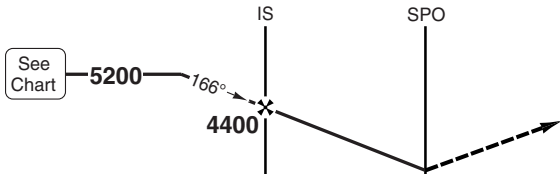
Congonhas INTL SAO PAULO

Sao Paulo APP					TWR	GND	ATIS		
119.25	119.8	129.0	129.75	132.1	133.85	127.15	121.9	127.65	
134.9	119.6	ALTN 120.05	ALTN 135.75	ALTN 118.05					
NDB 250 SPO	FAT 166°	THR Elev 17L 2590 /	THR Elev 17R 2589	AD Elev 2631	TL ATC	TA 6000			



50 - 13

MAPt SPO



Climb on 166° to **6000** to **RDE** and hold.

nm	14	13	12	11	10	9	8	7	6	5	4	3	2	1	0	TCH 55							
ACFT	NDB a NDB b Circling															GS	80	100	120	140	160	LDA 1435x45 4707x147ft	LDA 1810x45 5938x147ft
A	3330 (740)	3330 (741)	3430 (799) 1.6km			ROD 3.1°										430	540	650	760	870	 17L 17R NALS FALS		
B	1.6km	1.6km	3430 (799) 2.0km			FAF +20S										4260	4220	4180	4150	4110			
C	3330 (740)	3330 (741)	3430 (799) 3.2km			+40S										4110	4040	3970	3890	3830			
D	3330 (740)	3330 (741)	3430 (799) 3.6km			+60S										3970	3860	3750	3640	3540			
	3.2km	3.2km	3.6km			FAF-3330										2:29	1:59	1:39	1:25	1:14			
	3.6km	3.6km	4.0km			FAF-MAPt										3:29	2:47	2:20	2:00	1:45			

- a** RWY 17L NDB: 700ft
- b** RWY 17R Circling: 800ft

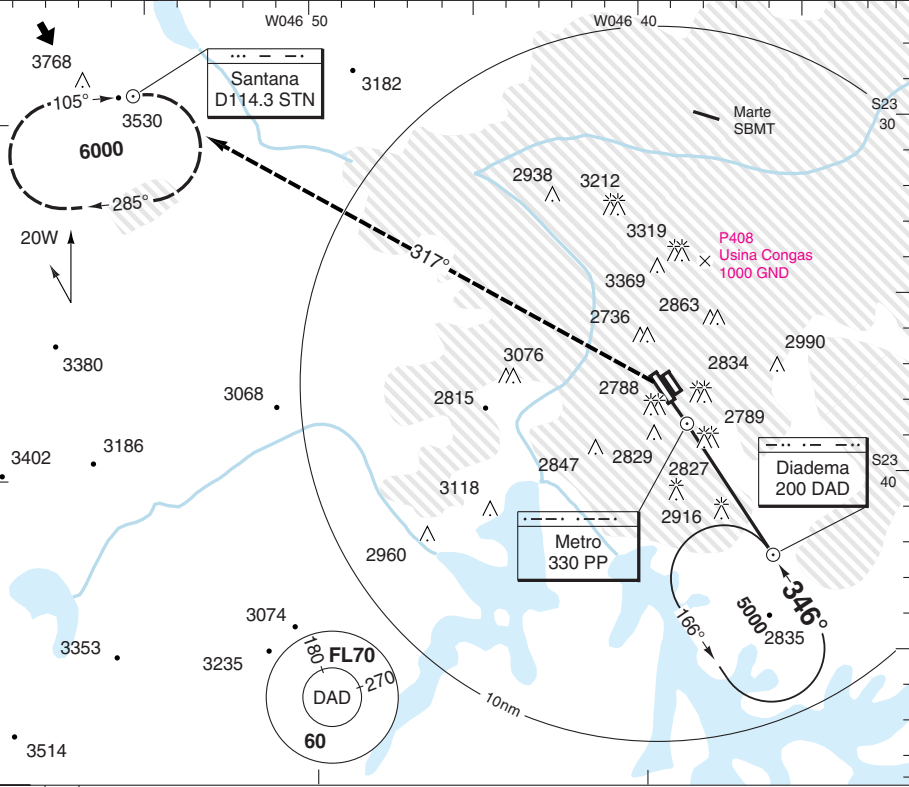
Change: New chart

THIS CHART IS A PART OF NAVGRAPH NDAC AND IS INTENDED FOR FLIGHT SIMULATION USE ONLY

NDB RWY 35L/R JULIETT 5

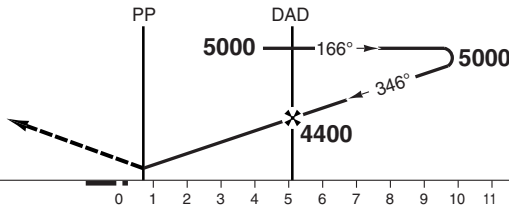
Congonhas INTL SAO PAULO

Sao Paulo APP					TWR	GND	ATIS			
119.25	119.8	129.0	129.75	132.1	127.15	121.9	127.65			
133.85	134.9	119.6	120.05	135.75	118.05					
NDB 330 PP		FAT 346°	TDZ Elev 35L 2629 / THR Elev 35R 2629		AD Elev 2631	TL ATC	TA 6000			



MAPt PP

Turn left to 317°/R137
 [STN], climbing to **6000**
 to [STN] and hold.



ACFT	NDB	Circling
A	3170 (541) 1.6km	3430 (799) 1.6km
B	3170 (541) 2.4km	3430 (799) 2.0km
C	3170 (541) 2.4km	3430 (799) 3.6km
D	3170 (541) 2.8km	3430 (799) 4.0km

	GS	80	100	120	140	160
ROD 3.2°	460	570	680	800	910	
FAF +20s	4260	4220	4180	4140	4110	
+40s	4110	4030	3950	3880	3800	
+60s	3950	3840	3730	3620	3500	
FAF-3170	2:44	2:11	1:49	1:34	1:22	
FAF-MAPT	3:18	2:38	2:12	1:53	1:39	

LDA 1880x45	LDA 1435x45
6167x147ft	4707x147ft
P	G
35L	35R
NALS	NALS

a RWY 17R/17L: West of AD.
 NDB: 600ft
 Circling: 800ft

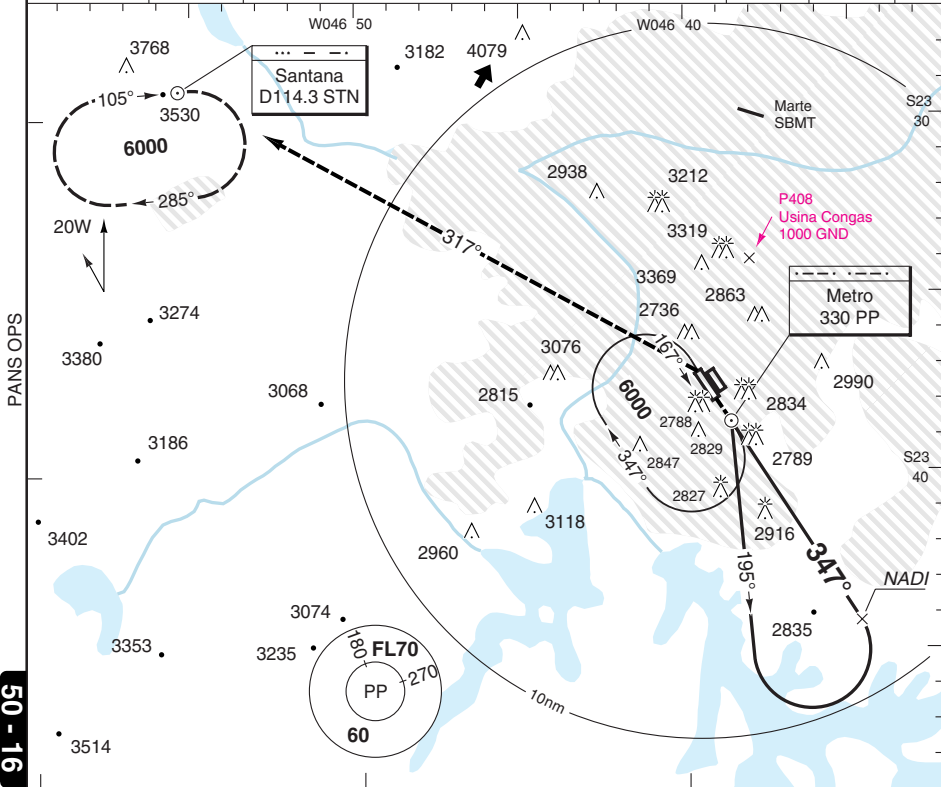
Change: Freq, Elev, Renumbered

© Navtech - sbbsp15iap00

NDB RWY 35L/R JULIETT 6

Congonhas INTL SAO PAULO

Sao Paulo APP					TWR	GND	ATIS		
119.25	119.8	129.0	129.75	132.1	127.15	121.9	127.65		
133.85	134.9	119.6	120.05	135.75 ALTN	118.05				
NDB 330 PP	FAT 347°	TDZ Elev 35L 2629 / THR Elev 35R 2629			AD Elev 2631	TL ATC	TA 6000		



50 - 16

MAPt PP

Turn left to 317°/R137 [STN], climbing to [6000] to [STN] and hold.



ACFT	NDB	NDB a	Circling b	Circling a b
A	3300 (671) 3.1km	3300 (671) 3.3km	3430 (799) 3.1km	3430 (799) 3.3km
B				
C	3300 (671) 3.2km	3300 (671) 3.5km	3430 (799) 3.6km	3430 (799) 3.6km
D				

a Non CDFA. NDB: 700ft
b RWY 17R/17L: West of AD. Circling: 800ft

LDA 1880x45 6167x147ft	LDA 1435x45 4707x147ft
P G 35L	G 35R
NALS	NALS

© Navtech - sbasp16iap00

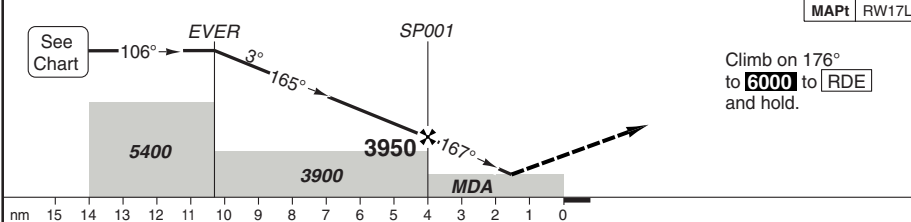
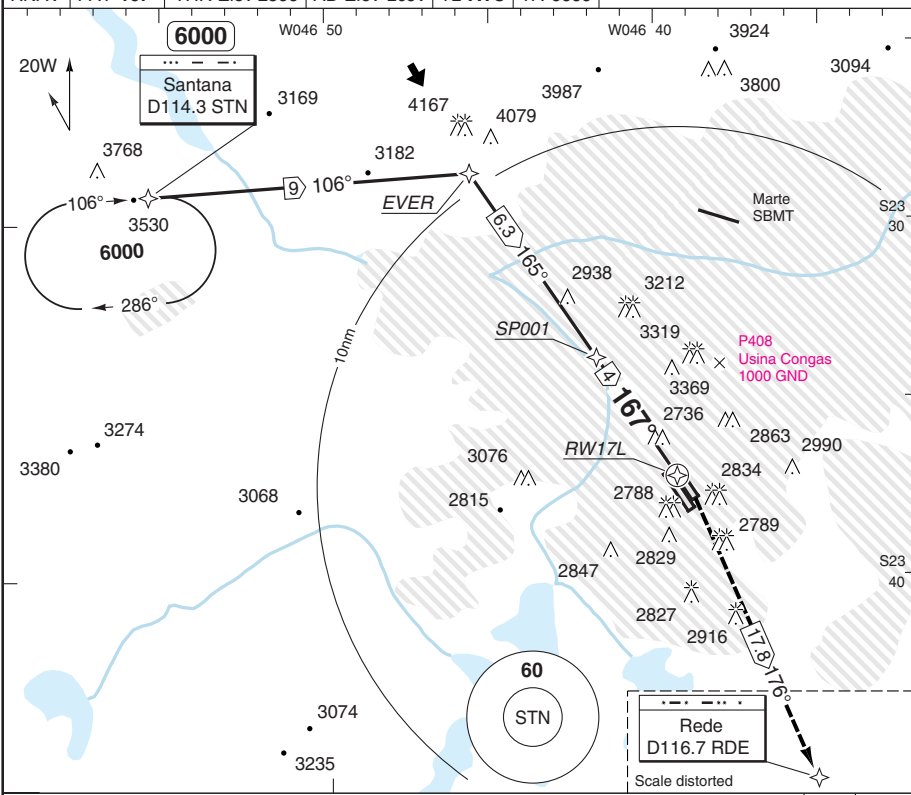
Change: Freq, Elev, Renumbered

THIS CHART IS A PART OF NAVIGRAPH NDAC AND IS INTENDED FOR FLIGHT SIMULATION USE ONLY

RNAV(GNSS) RWY 17L

Congonhas INTL SAO PAULO

Sao Paulo APP					TWR	GND	ATIS	
119.25	119.8	129.0	129.75	132.1	127.15	121.9	127.65	
133.85	134.9	119.6	120.05	135.75	ALTN	118.05		
RNAV	FAT 167°	THR Elev 2590	AD Elev 2631	TL ATC	TA 6000			



nm	15	14	13	12	11	10	9	8	7	6	5	4	3	2	1	0
ACFT	LNAV		Circling		RWY 35R/35L: West of AD.											
A	3100 (511)		3430 (799)		LNAV: 500ft Circling: 800ft											
B	1.6km		1.6km													
C	3100 (511)		3430 (799)													
D	3100 (511)		3430 (799)													
	GS	80	100	120	140	160										
	ROD 3.1°	440	550	660	770	880										
	THR 17L	3.1° ALT	LDA 1435x45 4707x147ft													
	10.3	6000														
	8	5260														
	7	4940														
	6	4610														
	5	4280														
	4	3950														
	3	3630														
	1.4	3100														

© Navtech - sbbsp17iaip00

NALS

Change: Freq, Elev, Renumbered

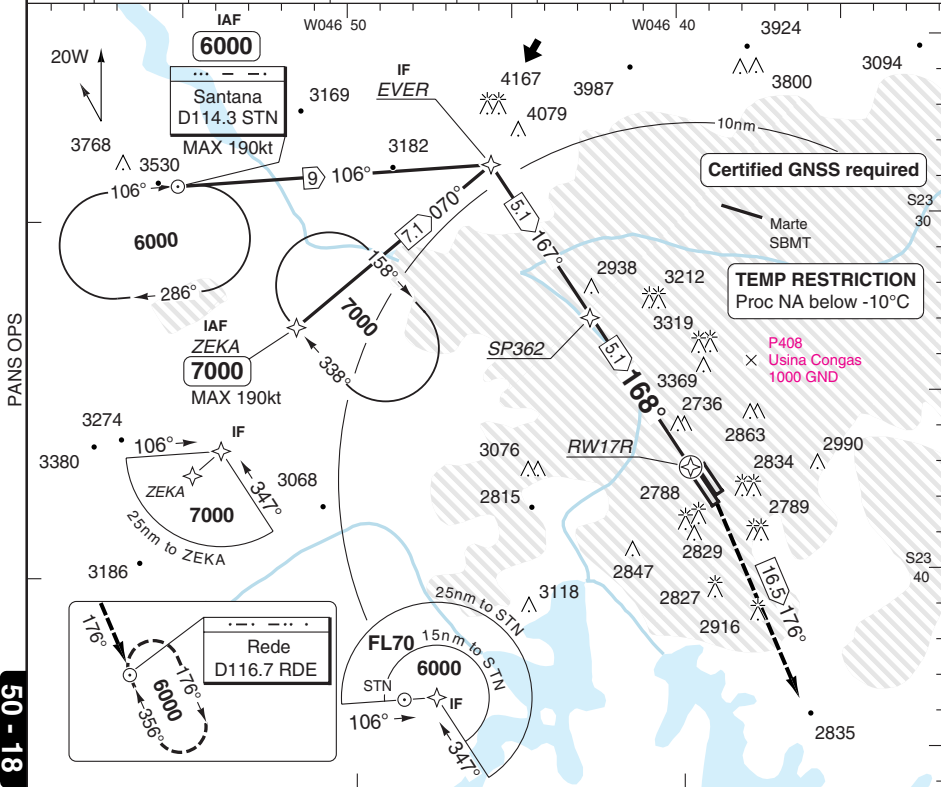
THIS CHART IS A PART OF NAVIGRAPH NDAC AND IS INTENDED FOR FLIGHT SIMULATION USE ONLY

RNAV(GNSS) RWY 17R

Congonhas INTL SAO PAULO

Sao Paulo APP					TWR	GND	ATIS
119.8	125.6	129.75	132.1	133.85	127.15	121.9	127.65
134.9	135.75	119.6	ALTN 120.05	ALTN	118.05		

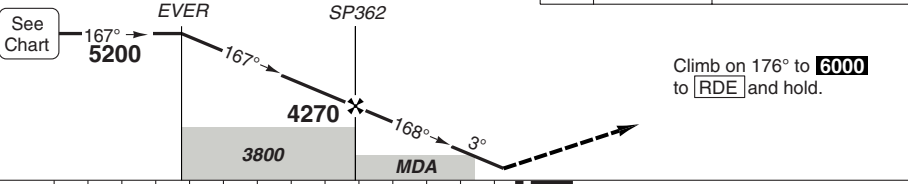
RNAV	FAT 168°	TDZ Elev 2589	AD Elev 2631	TL ATC	TA 6000
------	----------	---------------	--------------	--------	---------



PANS OPS

50 - 18

MAP1 LNAV: RW17R LNAV/VNAV: 1.2nm to THR



nm	14	13	12	11	10	9	8	7	6	5	4	3	2	1	0	TCH 50
----	----	----	----	----	----	---	---	---	---	---	---	---	---	---	---	--------

ACFT	LNAV/VNAV	LNAV
A	3030 (436) 1.3km	3120 (529) 1.5km
B		3120 (529) 1.7km
C		
D		

Note: Circling NA
 LNAV/VNAV: 500ft
 LNAV: 600ft

THR 17R	3.0° ALT	LDA 1810x45 5938x147ft
8	5200	P G FALS
6	4560	
5	4240	
4	3920	
3	3600	
2	3280	
1.5	3120	

GS	80	100	120	140	160
ROD 3.0°	430	540	640	750	860

Change: Freq, Elev, renumbered

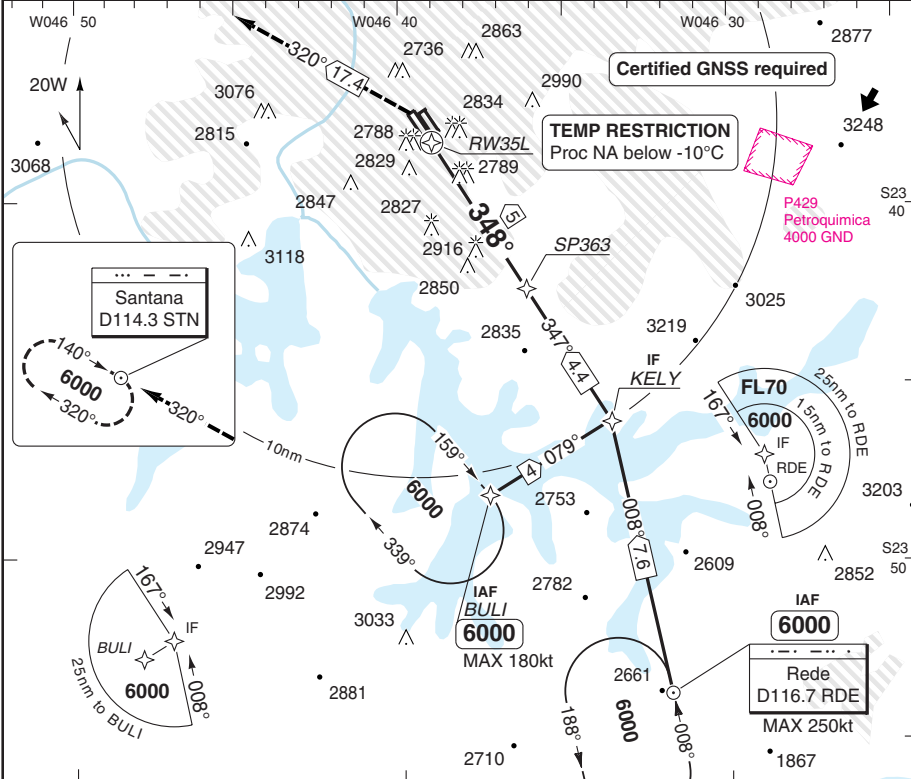
© Navtech - sbbsp18aip00

RNAV(GNSS) RWY 35L

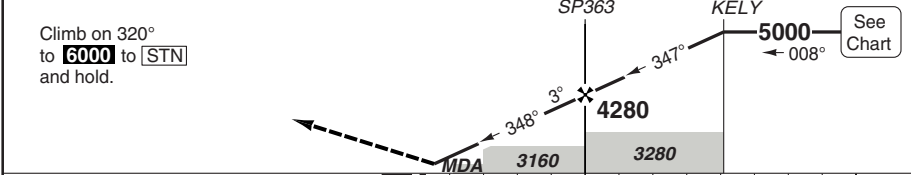
Congonhas INTL SAO PAULO

Sao Paulo APP					TWR	GND	ATIS	
119.8	125.6	129.75	132.1	133.85	127.15	121.9	127.65	
134.9	135.75	119.6	ALTN 120.05	ALTN	118.05			

RNAV	FAT 348°	TDZ Elev 2629	AD Elev 2631	TL ATC	TA 6000
------	----------	---------------	--------------	--------	---------



MAPt LNAV: RW35L LNAV/VNAV: 1.2nm to THR



TCH 50

ACFT	LNAV/VNAV	LNAV	500ft Note: Circling NA
A		3100 (467) 1.6km	
B	3080 (444) 2.1km		
C		3100 (467) 2.2km	
D			

THR	3.0°	LDA 1880x45 6167x147ft
35L	ALT	
7.3	5000	
6	4600	
5	4280	
4	3960	
3	3640	
2	3320	
1.3	3100	

GS	80	100	120	140	160
ROD 3.0°	430	540	650	750	860

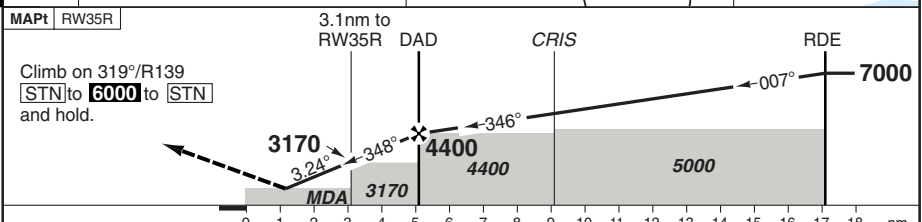
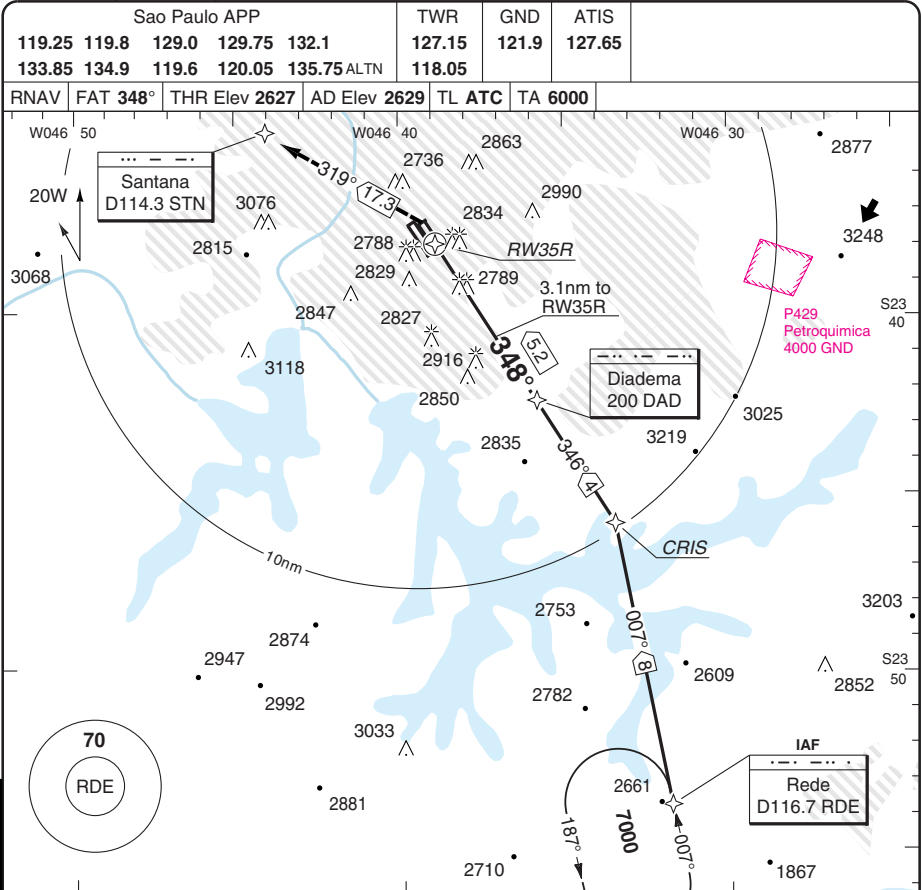
Change: Freq, Elev, renumbered

© Navtech - sbsp19aip00

50 - 19

RNAV(GNSS) RWY 35R

Congonhas INTL SAO PAULO



ACFT		LNAV	Circling	RWY 17R/17L: West of AD.	THR 3.2°	LDA 1435x45
A	3130 (501)	3430 (799) 1.6km	3430 (799) 2.0km	LNAV: 500ft	35R ALT	4707x147ft
B	1.6km	3430 (799) 2.0km	3430 (799) 3.6km	Circling: 800ft	5.1	4400
C	3130 (501)	2.4km	3430 (799) 4.0km		4	4030
D	2.8km	3130 (501)	3430 (799)		3	3700
		2.8km	3430 (799)		2	3360
					1.3	3130

GS	80	100	120	140	160
ROD 3.2°	460	570	680	790	910

Change: Freq, Elev, Renumbered

THIS CHART IS A PART OF NAVIGRAPH NDAC AND IS INTENDED FOR FLIGHT SIMULATION USE ONLY

© Navtech - sbbsp20iaip00

NALS