

Airport information:

Country: Japan

City: SHONAI

Coordinates: N 38° 48.7', E139 47.2

Elevation: 72

Customs: : O/R

Fuel: Jet A1

RFF: CAT 8

hours: 2200-1300

Runways:

Runway 09

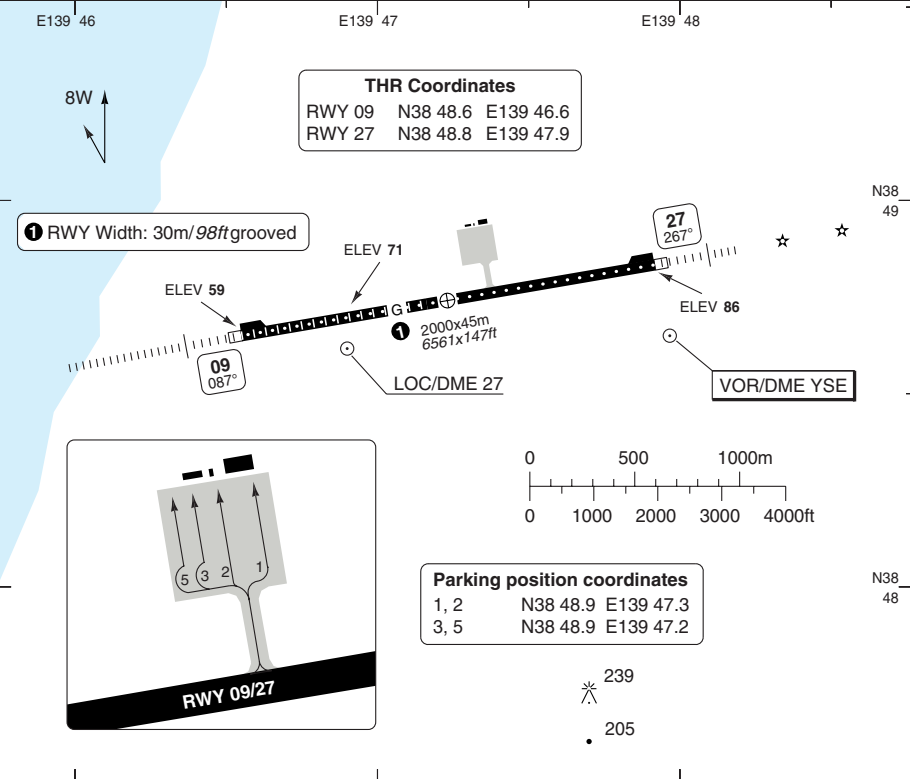
Takeoff length: 2000, Landing length: 2000

Runway 27

Takeoff length: 2000, Landing length: 2000

Shonai RADIO	Tokyo CTL
118.8	132.3
126.2	135.9

AD Elev **72** | ARP: N38 48.7 E139 47.2 | RFF: CAT 8 | AD HR: 22-13



THR Coordinates
 RWY 09 N38 48.6 E139 46.6
 RWY 27 N38 48.8 E139 47.9

① RWY Width: 30m/98ft grooved

Parking position coordinates
 1, 2 N38 48.9 E139 47.3
 3, 5 N38 48.9 E139 47.2

RWY	Slope	TORA m/ft	LDA m/ft	ALS	REDL	RCLL	Additional
09	+0.4	2000 / 6561	2000 / 6561	H-D	H	30m	P 3° (61)
27	-0.4	2000 / 6561	2000 / 6561	H-D ②	H	30m	P 3° (61)

② 420m, No EFAS, APCH light beacons 600m and 900m from THR.

STATE		TAKE OFF MINIMA	
With TKOF ALT AD		RVR/VIS	
Facilities		09	27
REDL + RCLL		500m / 0.4 km	-m / 0.4 km
REDL or RCLL		600m / 0.6 km	-m / 0.6 km
REDL + RCLL U/S		-m / 0.8 km	-m / 0.8 km
Without TKOF ALT AD		AVBL LDG MIN	

GENERAL INFORMATION

SPEED
 MAX 250kt at or below 10000ft.
 MAX 200kt (160kt for piston) at or below 3000ft.

© Navitech - rjsy01laorg0

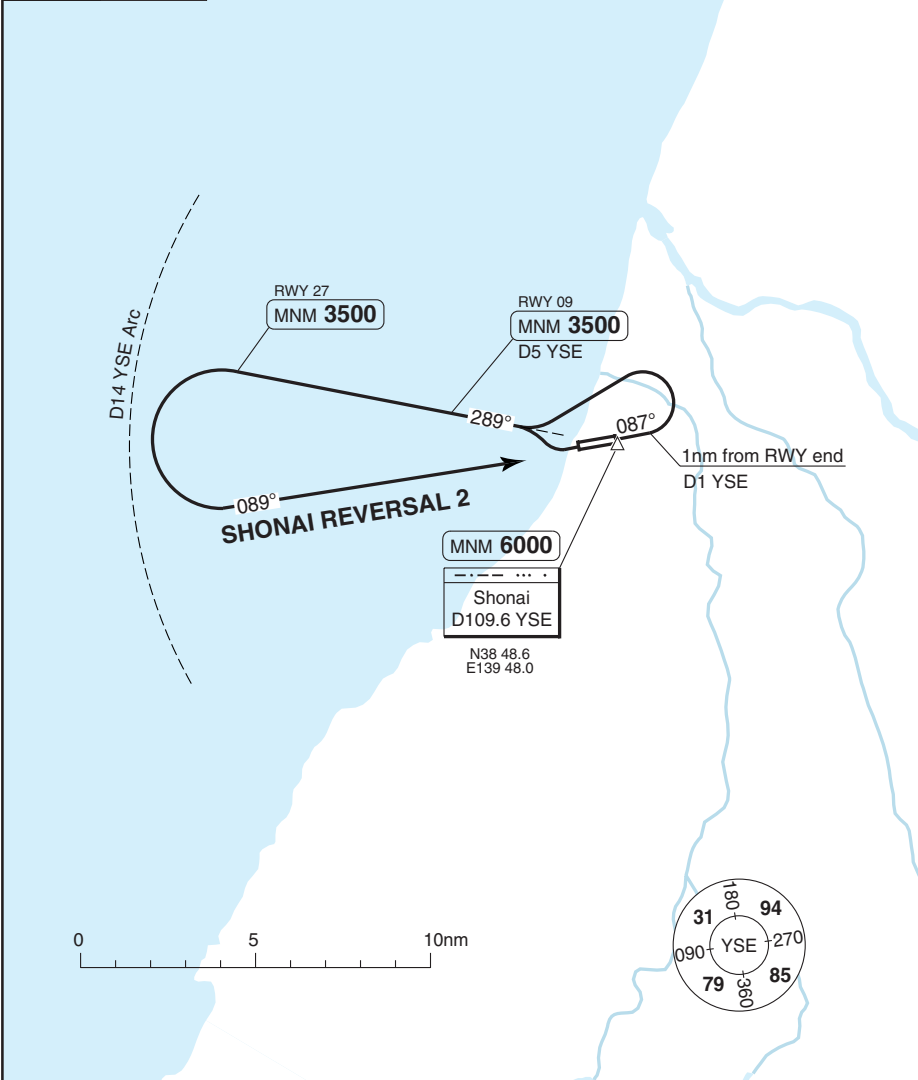
Reverse side blank

Change: New AD

SHONAI

SID SHONAI REVERSAL 2

Shonai RADIO	Tokyo CTL
118.8	132.3
126.2	135.9
TA 14000	AD Elev 72



SPEED: MAX 200kt (160kt for piston) at or below 3000ft.
 MAX 250kt at or below 10000ft.

RWY	Routeing	Altitudes
09	Climb on 087° to 1nm from RWY end/D1 YSE - turn left - intcp R289 YSE - turn left (within D14 YSE) - 089°/R269 YSE - YSE.	D5 YSE MNM 3500 YSE MNM 6000
27	After TKOF turn right on R289 YSE to 3500 - turn left (within D14 YSE) - 089°/R269 YSE - YSE.	YSE MNM 6000

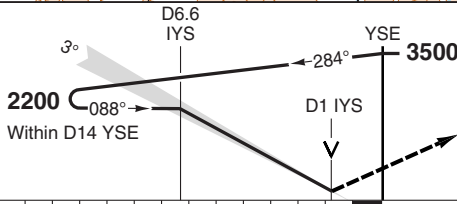
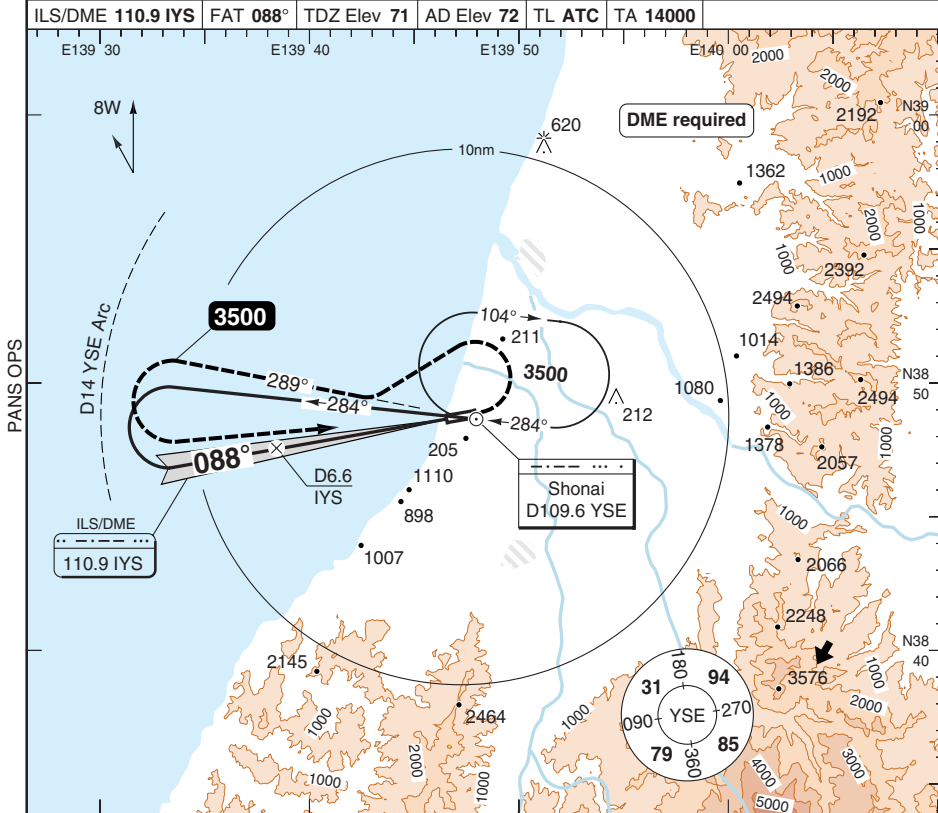
Change: New AD

THIS CHART IS A PART OF NAVIGRAPH NDAC AND IS INTENDED FOR FLIGHT SIMULATION USE ONLY

ILS RWY 09

SHONAI

Tokyo CTL 132.3 135.9	Shonai RADIO 118.8 126.2				
ILS/DME 110.9 IYS	FAT 088°	TDZ Elev 71	AD Elev 72	TL ATC	TA 14000



Turn left and climb on R289 [YSE] to **3500**. Then turn left (within D14 [YSE]) to [YSE] and hold.

nm	16	15	14	13	12	11	10	9	8	7	6	5	4	3	2	1	0	TCH 55
----	----	----	----	----	----	----	----	---	---	---	---	---	---	---	---	---	---	--------

ACFT	ILS	LOC+DME	Circling ^(b)
A	290 (212) 600m ^(a)	380 (321) 900m	540 (468) 1.6km
B		380 (321) 1000m	580 (500) 1.6km
C		380 (321) 1400m	680 (600) 2.4km
D		380 (321) 1400m	780 (700) 3.6km

^(a) TDZL and/or RCLL U/S: **750m**.
^(b) North of RWY.

DME IYS	3.0° ALT	LDA 2000x45 6561x147ft P 3° (61)
6.6	2200	
6	2010	
5	1690	
4	1360	
3	1040	
2	720	
1.0	380	

GS	80	100	120	140	160
ROD 3.0°	440	540	650	760	870

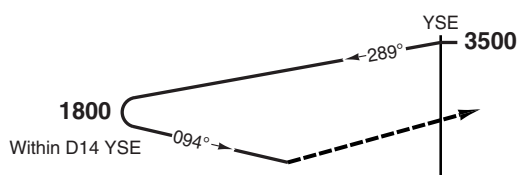
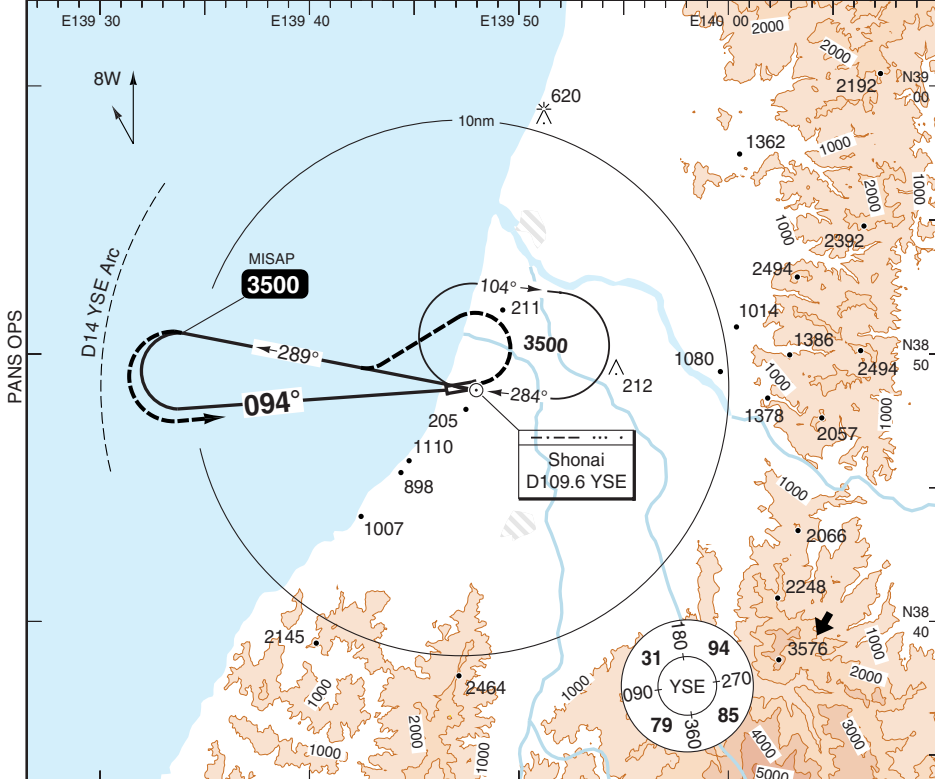
Change: New AD

VOR RWY 09

SHONAI

Tokyo CTL 132.3 135.9	Shonai RADIO 118.8 126.2
---	--

VOR/DME 109.6 YSE	FAT 094°	TDZ Elev 71	AD Elev 72	TL ATC	TA 14000
--------------------------	-----------------	--------------------	-------------------	---------------	-----------------



Turn left and climb on R289 YSE to **3500**. Then turn left (within D14 YSE) to YSE and hold.

nm	16	15	14	13	12	11	10	9	8	7	6	5	4	3	2	1	0
ACFT	VOR	VOR a	Circling b	Circling a b	a Non CDFA. b North of RWY.		LDA 2000x45 6561x147ft P 3° (61)										
STATE	A	700 (641) 2300m	700 (641) 2500m	720 (641) 2.3km	720 (641) 2.5km												
B	700 (641) 2700m			720 (641) 2.3km	720 (641) 2.5km												
C		700 (641) 2700m	720 (641) 2.4km	720 (641) 2.7km													
D		780 (700) 3.6km	780 (700) 3.6km														

© Navtech - rjsy03iaip00

50 - 3

FALS
Reverse side blank