

Airport information:

Country: Japan

City: AKI TA

Coordinates: N 39° 36.9', E140 13.1

Elevation: 127

Customs: Customs

Fuel: Jet A1, 100

RFF: CAT 9

hours: 2200-1300

Runways:

Runway 10

Takeoff length: 2500, Landing length: 2500

Runway 28

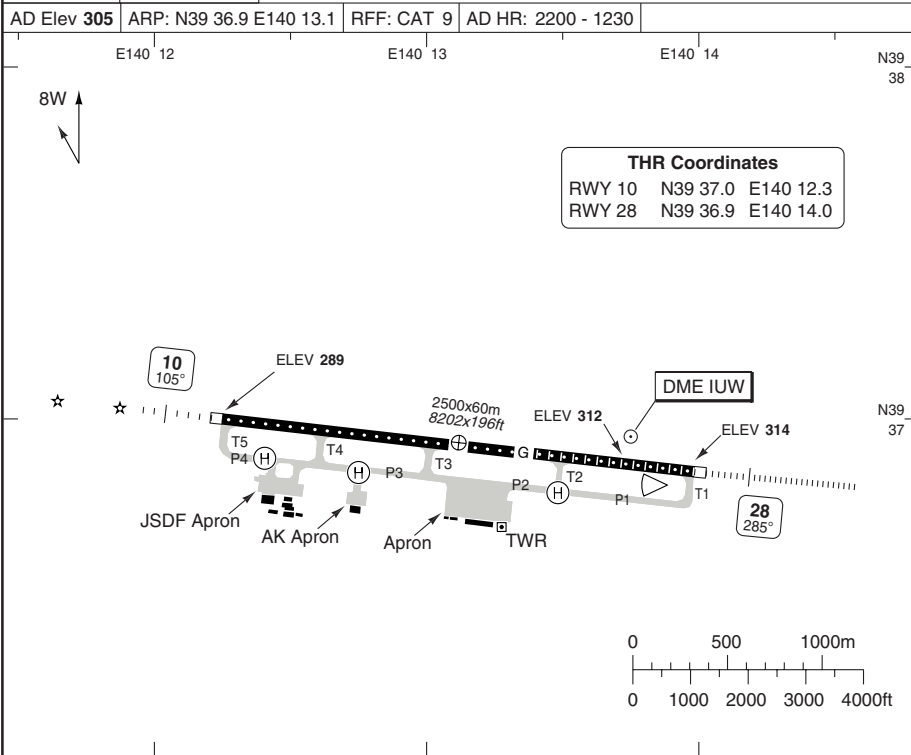
Takeoff length: 2500, Landing length: 2500

AERODROME

AKITA

10 - 1

Akita TWR 118.6 126.2	Sapporo CTL 127.575 120.575		
AD Elev 305	ARP: N39 36.9 E140 13.1	RFF: CAT 9	AD HR: 2200 - 1230



RWY	Slope	TORA m/ft	LDA m/ft	ALS	REDL	RCLL	Additional
10	+0.3	2500 / 8202	2500 / 8202	H-D ①	H	30m	P3° (74)
28	-0.3	2500 / 8202	2500 / 8202	H-D	H	30m	P3° (66)

① 420m, No EFAS. APCH light beacon 550m and 890m from THR.

STATE	TAKE OFF MINIMA	
With TKOF ALT AD	10	28
Facilities	RVR/VIS	RVR/VIS
REDL + RCLL	- / 0.4 km	500m / 0.4 km
REDL or RCLL	- / 0.6 km	600m / 0.6 km
NIL (day only)	- / 0.8 km	- / 0.8 km
Without TKOF ALT AD	AVBL LDG MIN	

© Navitech - rjsk01laorg0

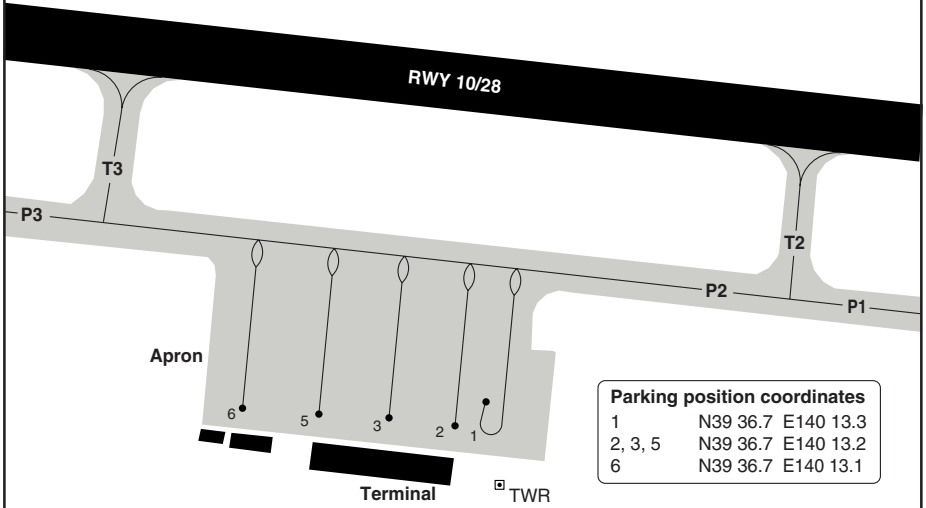
Change: New AD

THIS CHART IS A PART OF NAVIGRAPH NDAC AND IS INTENDED FOR FLIGHT SIMULATION USE ONLY

AERODROME

10 - 2

Akita TWR	Sapporo CTL
118.6	127.575
126.2	120.575



Parking position coordinates		
1	N39 36.7	E140 13.3
2, 3, 5	N39 36.7	E140 13.2
6	N39 36.7	E140 13.1

GENERAL INFORMATION

- SPEED**
 MAX 250kt below 10000ft.
 MAX 200kt (160kt for piston) at or below 3000ft.

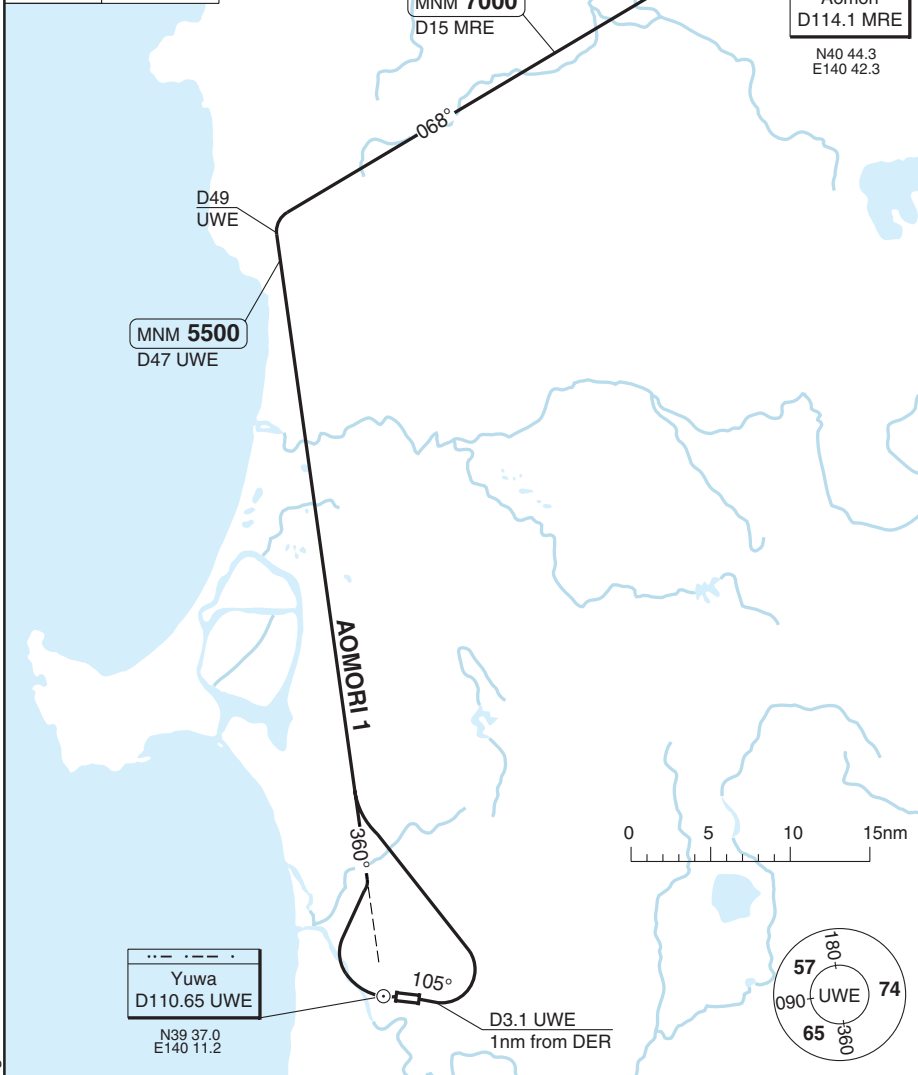
© Navitech - rjck02laorg0

Change: New AD

SID AOMORI 1

AKITA

Akita TWR	Sapporo CTL
118.6	127.575
126.2	120.575
TA 14000	AD Elev 305



30 - 1

SPEED: MAX 200kt (160kt for piston) at or below 3000ft.
MAX 250kt below 10000ft.

SID	RWY	Routeing	Altitudes
AOMORI 1	10	Climb on 105° to D3.1 UWE (1nm from DER) - turn left - intcp R360 UWE - at D49 UWE turn right - intcp R248 MRE - MRE.	D47 UWE MNM 5500 D15 MRE MNM 7000
	28	After TKOF turn right - intcp R360 UWE - at D49 UWE turn right - intcp R248 MRE - MRE.	

© Navitech - rjsk01daorg0

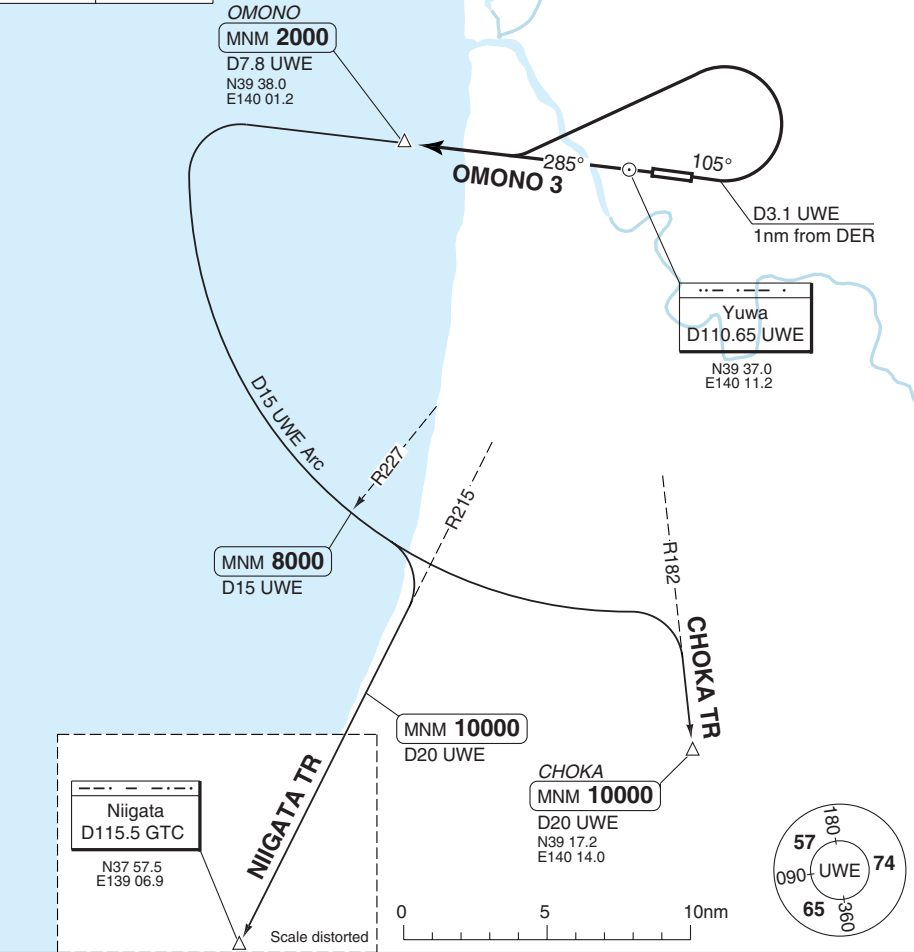
Change: New AD

THIS CHART IS A PART OF NAVIGRAPH NDAC AND IS INTENDED FOR FLIGHT SIMULATION USE ONLY

SID OMONO 3

Akita TWR	Sapporo CTL
118.6	127.575
126.2	120.575
TA 14000	AD Elev 305

30 - 2



SPEED: MAX 200kt (160kt for piston) at or below 3000ft.
 MAX 250kt below 10000ft.

SID	RWY	Routeing	Altitudes
OMONO 3	10	Climb on 105° to D3.1 UWE (1nm from DER) - turn left - intcp R285 UWE - OMONO.	OMONO MNM 2000
	28	After TKOF turn right - climb via R285 UWE - OMONO.	
Transition		Routeing	Altitudes
CHOKA TR		OMONO - R285 UWE - turn left - D15 UWE arc - intcp R182 UWE - CHOKA.	R227 UWE MNM 8000 CHOKA MNM 10000
NIIGATA TR		OMONO - R285 UWE - turn left - D15 UWE arc - intcp R215 UWE - GTC.	R227 UWE MNM 8000 R215/D20 UWE MNM 10000

© Navtech - rjsk02daorgo

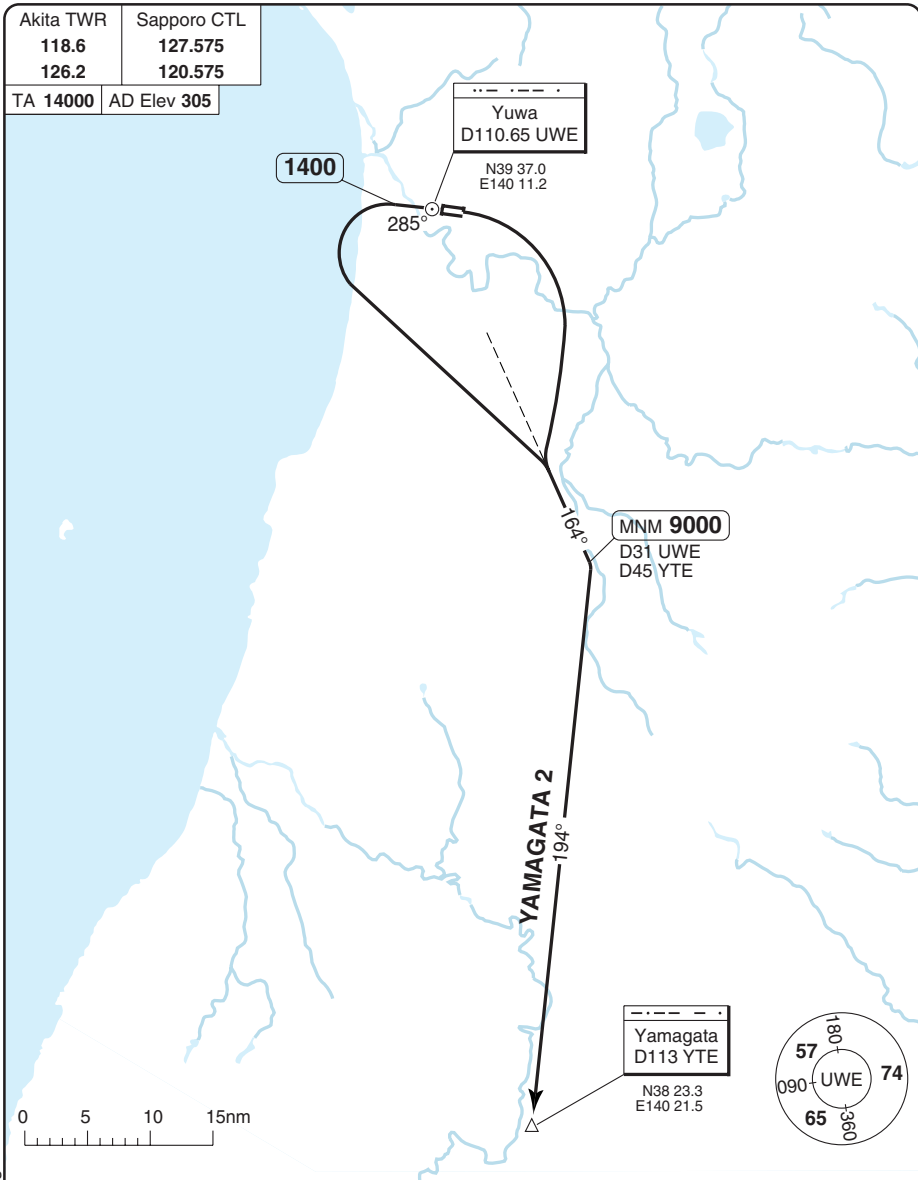
Change: New AD

SID YAMAGATA 2

AKITA

Akita TWR	Sapporo CTL
118.6	127.575
126.2	120.575

TA 1400	AD Elev 305
---------	-------------



30 - 3

SPEED: MAX 200kt (160kt for piston) at or below 3000ft.
MAX 250kt below 10000ft.

SID	RWY	Routeing	Altitudes
YAMAGATA 2	10	After TKOF turn right - intcp R164 UWE - intcp R014 YTE - YTE.	R164/D31 UWE MNM 9000
	28	Climb on 285° to 1400 - turn left - intcp R164 UWE - intcp R014 YTE - YTE.	

© Navitech - rjsk03daorg0

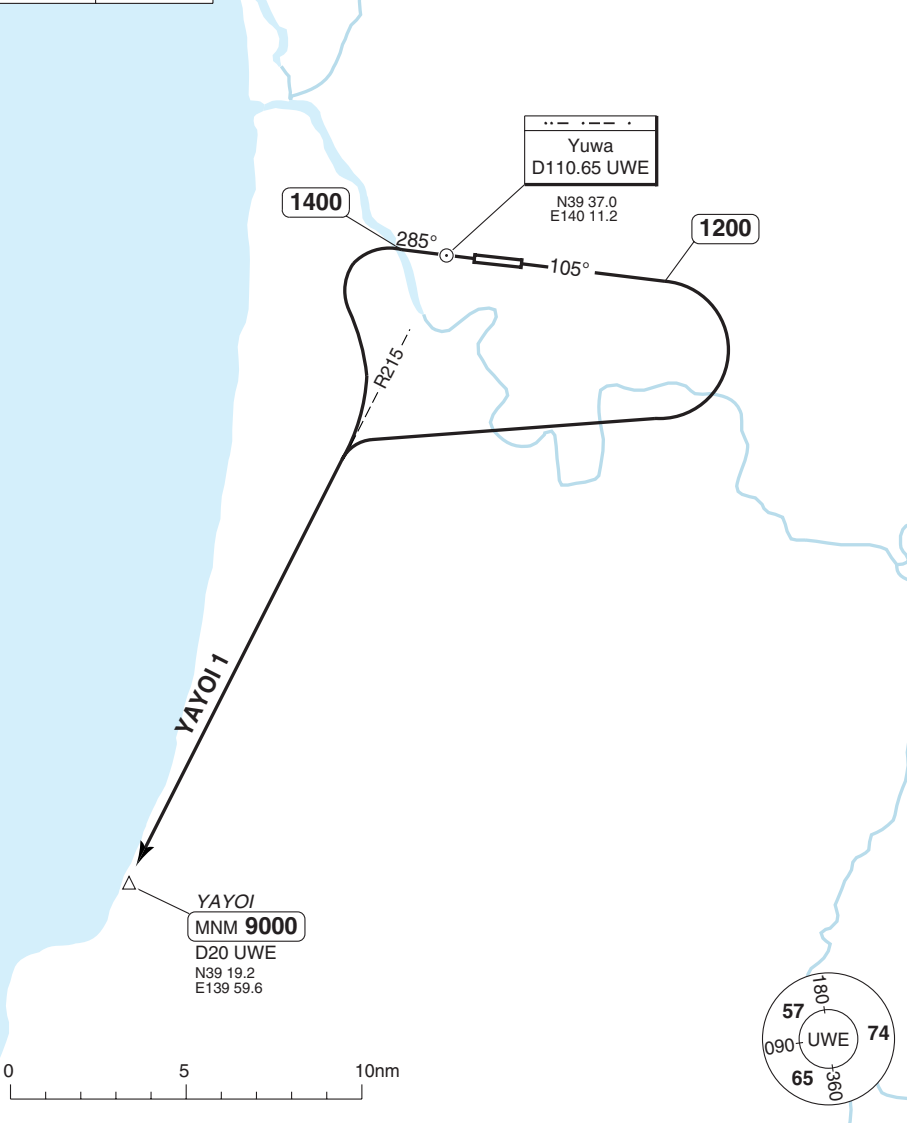
Change: New AD

SID YAYOI 1

AKITA

Akita TWR 118.6 126.2	Sapporo CTL 127.575 120.575
TA 14000	AD Elev 305

30 - 4



SPEED: MAX 200kt (160kt for piston) at or below 3000ft.
MAX 250kt below 10000ft.

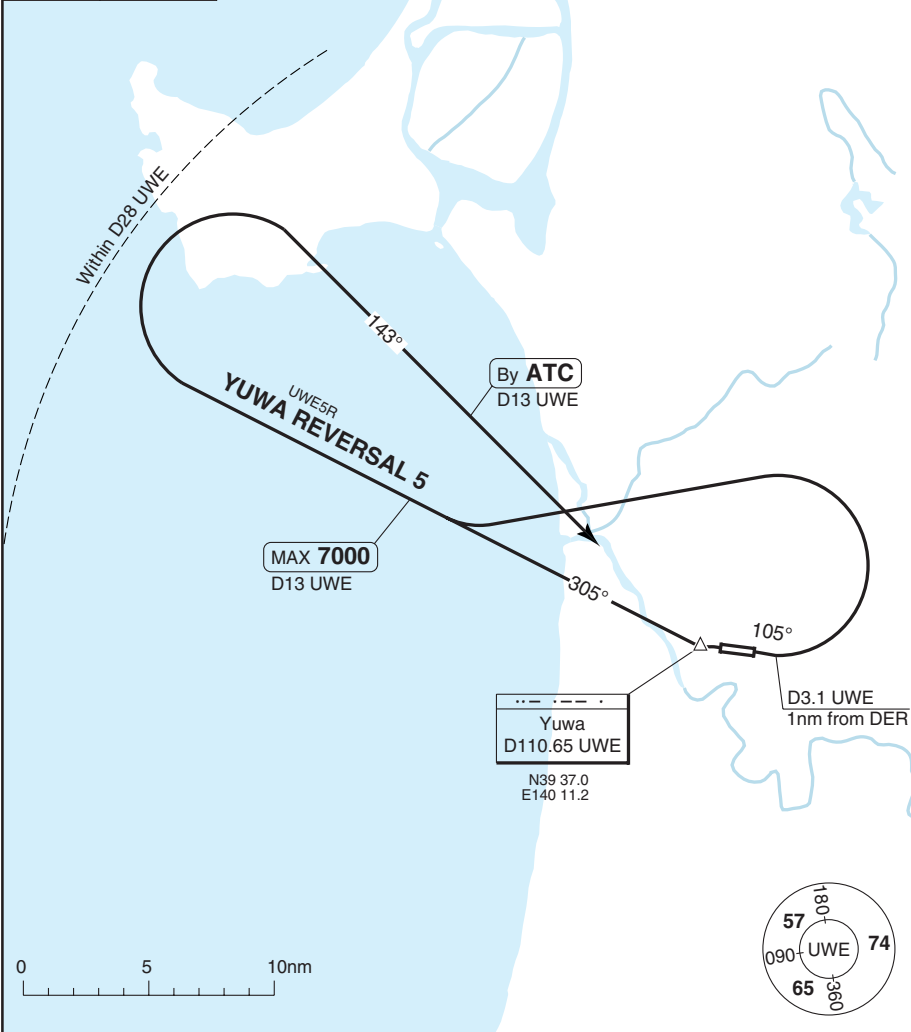
SID	RWY	Routeing	Altitudes
YAYOI 1	10	Climb on 105° to 1200 - turn right - intcp R215 UWE - YAYOI.	YAYOI MNM 9000
	28	Climb on 285° to 1400 - turn left - intcp R215 UWE - YAYOI.	

© Navitech - rjsk04daorg0

Change: New AD

SID YUWA REVERSAL 5

Akita TWR	Sapporo CTL
118.6	127.575
126.2	120.575
TA 14000	AD Elev 305



30 - 5

Reverse side blank

© Navitech - rjsk04daorg0

SPEED: MAX 200kt (160kt for piston) at or below 3000ft.
MAX 250kt below 10000ft.

SID	RWY	Routeing	Altitude
YUWA REVERSAL 5	10	Climb on 105° to D3.1 UWE (1nm from DER) - turn left - intcp R305 UWE - turn right (within D28 UWE) intcp R323 UWE - UWE.	R305/D13 UWE MAX 7000 R323/D13 UWE By ATC
	28	After TKOF turn right - intcp R305 UWE - turn right (within D28 UWE) - intcp R323 UWE - UWE.	

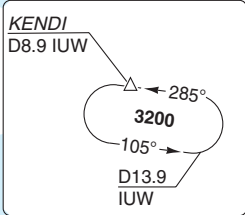
Change: New AD

STAR KENDI

AKITA

Sapporo CTL		Akita TWR	
127.575		118.6	
120.575		126.2	
TL	ATC	AD Elev 305	

SPEED
 MAX 250kt below 10000ft.
 MAX 200kt (160kt for piston) below 3000ft.



MAGGY
 MNM 8000
 D19 UWE
 N39 54.9
 E140 19.4

D26 UWE

MNM 7000

MNM 5000

MNM 3200
 D12 IUW

MNM 4300

MNM 3600

Yuwa
 D110.65 UWE
 N39 37.0
 E140 11.2

KENDI
 D8.9 IUW
 N39 35.8
 E140 25.2

MNM 3400

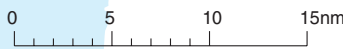
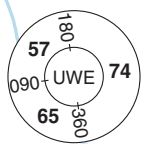
YAYOI
 MNM 10000
 D20 UWE
 N39 19.2
 E139 59.6

CHOKA
 MNM 7000
 D20 UWE
 N39 17.2
 E140 14.0

D28 UWE

7000

D28 UWE



40 - 1

© Navitech - rjsk01aaorg0

Change: New AD

THIS CHART IS A PART OF NAVIGRAPH NDAC AND IS INTENDED FOR FLIGHT SIMULATION USE ONLY

STAR OMONO

AKITA

Sapporo CTL	Akita TWR
127.575	118.6
120.575	126.2
TL ATC	AD Elev 305

SPEED
 MAX 250kt below 10000ft.
 MAX 200kt (160kt for piston) below 3000ft.

40 - 2

OMONO NORTH
 D17 UWE Arc

OMONO SOUTH
 D17 UWE Arc

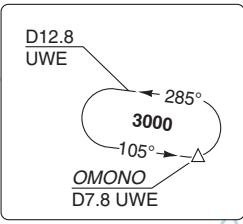
MAGGY
 MNM 8000
 D19 UWE
 N39 54.9
 E140 19.4

MNM 5000

OMONO
 MNM 3000
 D7.8 UWE
 N39 38.0
 E140 01.2

Yuwa
 D110.65 UWE
 N39 37.0
 E140 11.2

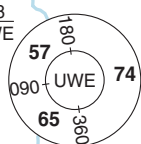
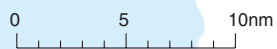
MNM 3400



YAYOI
 MNM 10000
 D20 UWE
 N39 19.2
 E139 59.6

CHOKA
 MNM 7000
 D20 UWE
 N39 17.2
 E140 14.0

D28 UWE



© Navitech - rjsk02aaorg0

Change: New AD

THIS CHART IS A PART OF NAVIGRAPH NDAC AND IS INTENDED FOR FLIGHT SIMULATION USE ONLY

ILS Y RWY 28

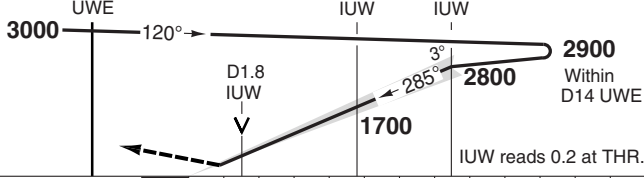
Sapporo CTL	Akita TWR
127.575	118.6
120.575	126.2

ILS/DME 108.9 IUW	FAT 285°	THR Elev 314	AD Elev 305	TL ATC	TA 14000
-------------------	----------	--------------	-------------	--------	----------



MAPt D0.8 IUW

Climb on 285° to **3000**, turn right (within D10 UWE) to UWE and hold.



TCH 54

ACFT	ILS	LOC+DME	Circling
A	520 (200) 550m ^a	840 (535) 1500m	840 (535) 1.6km
B			910 (600) 2.4km
C	840 (535) 1700m	840 (535) 1700m	1010 (700) 3.6km
D			

^a TDZL and/or RCLL U/S: 750m.

DME IUW	3.1° ALT	LDA 2500x60 8202x196ft P 3° (66)
8	2900	P 3° (66)
7	2580	
6	2250	
5	1930	
4	1600	
3	1280	
2	950	
1.7	840	

GS	80	100	120	140	160
ROD 3.1°	440	550	660	760	870

Change: New AD

© Navtech - rjrk01iaip00

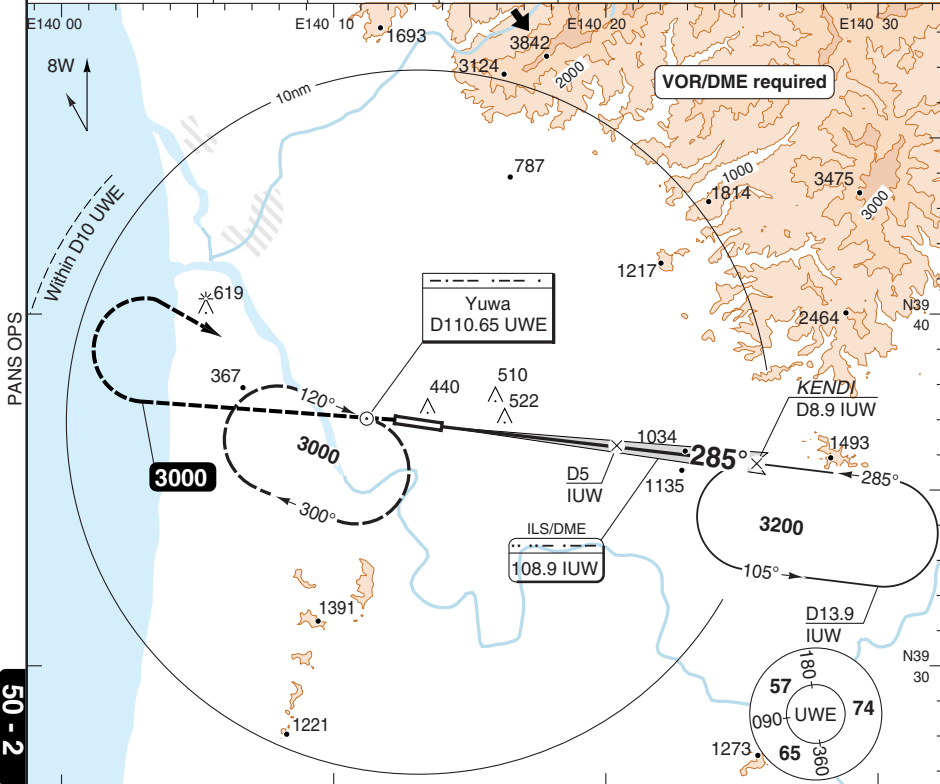
50 - 1

FALS

ILS Z RWY 28

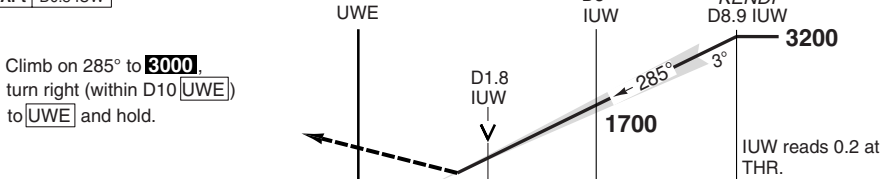
Sapporo CTL	Akita TWR
127.575	118.6
120.575	126.2

ILS/DME. 108.9 IUW	FAT 285°	THR Elev 314	AD Elev 305	TL ATC	TA 14000
--------------------	----------	--------------	-------------	--------	----------



50 - 2

MAPt D0.8 IUW



TCH 54

ACFT	ILS	LOC+DME	Circling
A	520 (200) 550m ^a	840 (535) 1500m	840 (535) 1.6km
B			910 (600) 2.4km
C	840 (535) 1700m	840 (535) 1700m	1010 (700) 3.6km
D			

^a TDZL and/or RCLL U/S: 750m.

DME IUW	3.1° ALT	LDA 2500x60 8202x196ft P 3° (66)
8.9	3200	FALSE
7	2590	
6	2260	
5	1930	
4	1610	
3	1280	
2	960	
1.7	840	

GS	80	100	120	140	160
ROD 3.1°	440	550	660	770	880

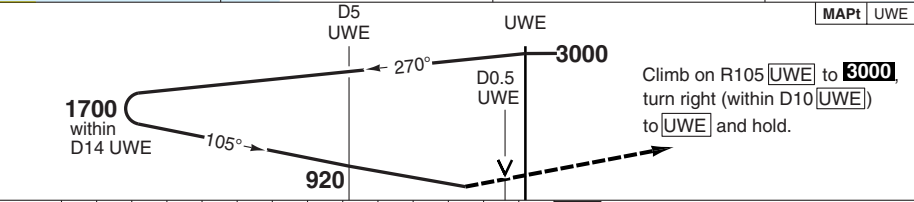
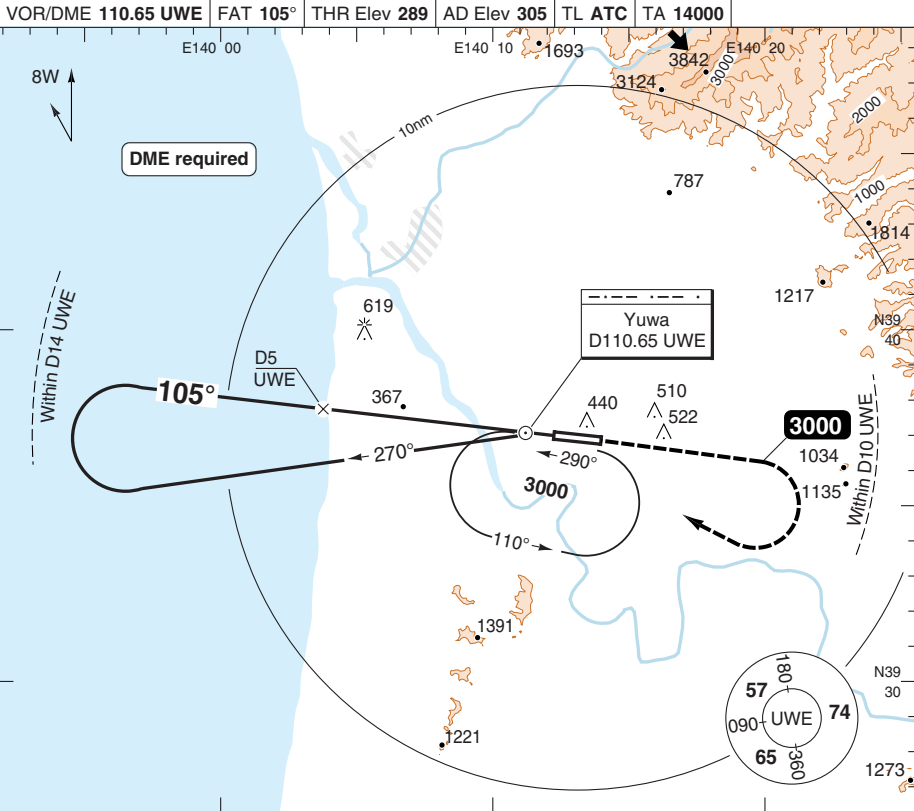
© Navtech - rjisk02iaip00

Change: New AD

VOR Y RWY 10

AKITA

Sapporo CTL 127.575 120.575	Akita TWR 118.6 126.2
VOR/DME 110.65 UWE FAT 105° THR Elev 289 AD Elev 305 TL ATC TA 14000	



nm	14	13	12	11	10	9	8	7	6	5	4	3	2	1	0
ACFT	VOR+DME		Circling												
A	760 (471)		780 (471)												
B	1500m		810 (500)												
C	760 (471)		910 (600)												
D	1800m		1010 (700)												
	GS	80	100	120	140	160									
	ROD 3.0°	430	540	640	750	850									
	DME UWE	3.5	3	2	1	0.5	3.0° ALT	1700	1550	1230	920	760	LDA 2500x60 820x196ft P 3° (74)		

© Navtech - rjisk03iaip00

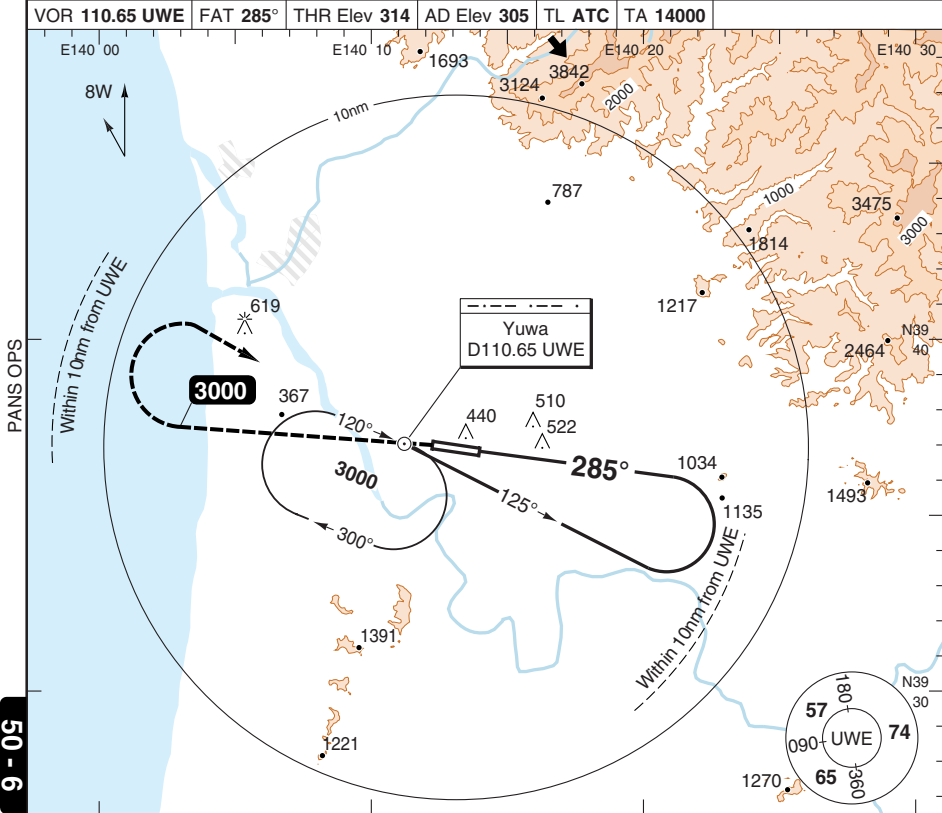
Change: New AD

THIS CHART IS A PART OF NAVIGRAPH NDAC AND IS INTENDED FOR FLIGHT SIMULATION USE ONLY

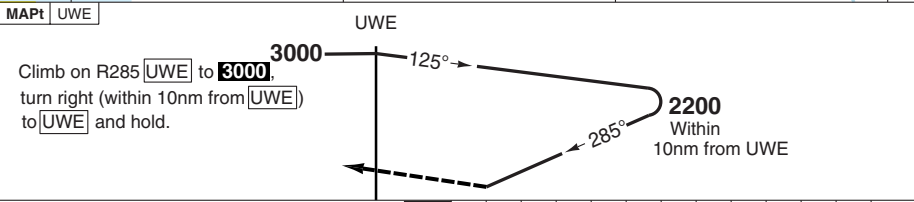
VOR Y RWY 28

AKITA

Sapporo CTL 127.575 120.575	Akita TWR 118.6 126.2	VOR 110.65 UWE FAT 285° THR Elev 314 AD Elev 305 TL ATC TA 14000			
--	------------------------------------	---	--	--	--



50 - 6



ACFT	VOR	VOR ^a	Circling	Circling ^a	a Non CDFA. LDA 2500x60 8202x196ft P 3° (66) FALS
A	1060 (755) 2700m	1060 (755) 2900m	1060 (755) 2.7km	1060 (755) 2.9km	
B				1060 (755) 3.1km	
C		1060 (755) 3100m	1060 (755) 3.6km	1060 (755) 3.6km	
D				1060 (755) 3.6km	

© Navtech - rjisk06iaip00

Change: New AD

THIS CHART IS A PART OF NAVIGRAPH NDAC AND IS INTENDED FOR FLIGHT SIMULATION USE ONLY