

Airport information:

Country: United States Minor Outlying Islands

City: WAKE ISLAND

Coordinates: N 19° 17.0', E166 38.0

Elevation: 14

Customs:

Fuel: Jet A1

RFF:

hours: Mon-Sat 1930-0530

Runways:

Runway 10

Takeoff length: 3000, Landing length: 3000

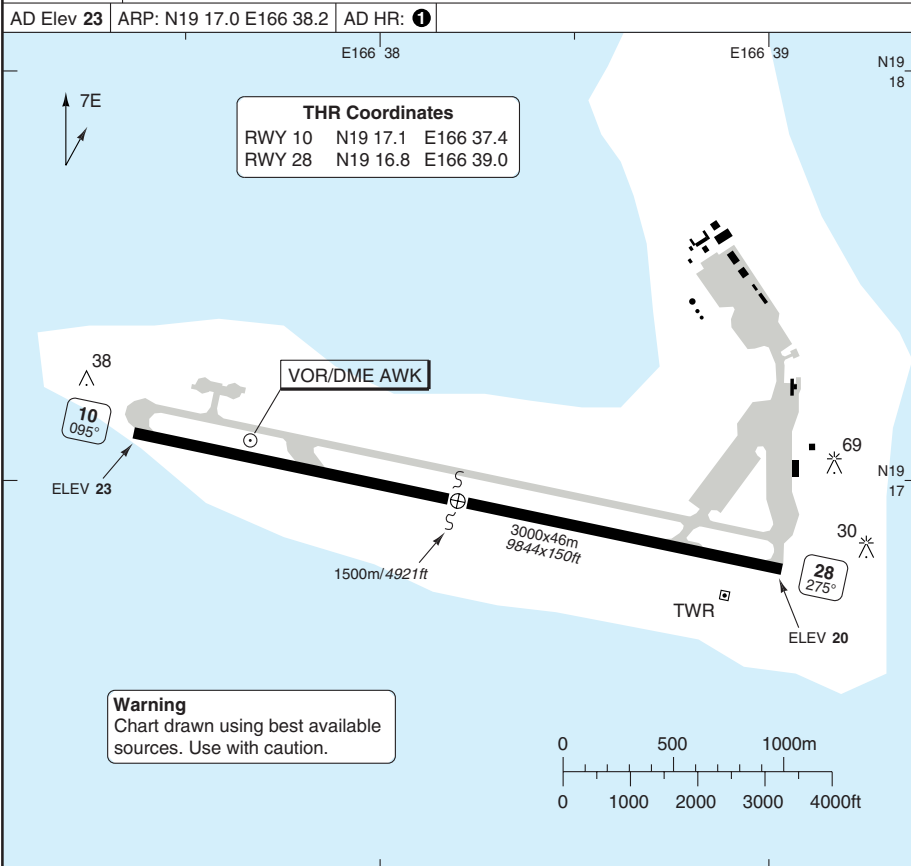
Runway 28

Takeoff length: 3000, Landing length: 3000

AERODROME

10 - 1

Wake OPS 128.0			
AD Elev 23	ARP: N19 17.0 E166 38.2	AD HR: 1	



RWY	Slope	TORA m/ft	LDA m/ft	ALS	REDL	Additional
10	0	3000 / 9844	3000 / 9844	-	H	P 3° (71), REIL
28	0	3000 / 9844	3000 / 9844	-	H	P 3° (71), REIL

1 15 NOV-15 MAR: MON-SAT 1930-0530; 16 MAR-14 NOV: MON-SAT 19-05, EXC Holidays.

Take Off minima values unavailable
The responsibility for minima used remains with the operator

© Navitech - pwak011aorg0

Change: New spec.

THIS CHART IS A PART OF NAVIGRAPH NDAC AND IS INTENDED FOR FLIGHT SIMULATION USE ONLY

AERODROME

10 - 2

GENERAL INFORMATION

1. AERODROME RESTRICTION

- 1.1 PPR MNM 24hr before for all ACFT.
- 1.2 CLSD for foreign ACFT.
- 1.3 Limited OPS, avbl for emergency landing and minimal TFC.

2. CAUTION

- 2.1 Bird hazard on APCH RWY 10 and RWY 28 DEP.
- 2.2 Ocean vessels with mast APRX 125ft periodically located at mooring buoys 1097m/3600ft West of THR RWY 10.

3. COMMUNICATION

- 3.1 INBD ACFT expect descent and APCH clearances from Oakland ARTCC through San Fransisco or Honolulu Aeronautical Radio, Inc.
- 3.2 INBD ACFT contact Wake OPS 100nm out for AD advisory service and servicing requirements.

- 3.3 Make all DEP reports to ARTCC via HF.

- 3.4 No ATC service AVBL to overflights.

- 3.5 When normal SATCOM U/S, International Marine Satellite AVBL.

4. SPEED

- 4.1 MAX 250kt below 10000.

5. CIRCUITS

- 5.1 RWY 10 right hand circuit
- 5.2 RWY 28 left hand circuit

6. TWY RESTRICTION

- 6.1 New TWY line restriction located at intersection of TWY E and D, continues West onto the warm-up pad. Does not provide wingtip clearance to ACFT with wingspan greater than 18m/60ft