

Airport information:

Country: United States of America

City: FAIRBANKS

Coordinates: N 64° 39.9', W 147° 06.1'

Elevation: 547

Customs:

Fuel:

RFF: No Info

hours: 16-08.

Runways:

Runway 14

Takeoff length: NA, Landing length: NA

Runway 32

Takeoff length: NA, Landing length: NA

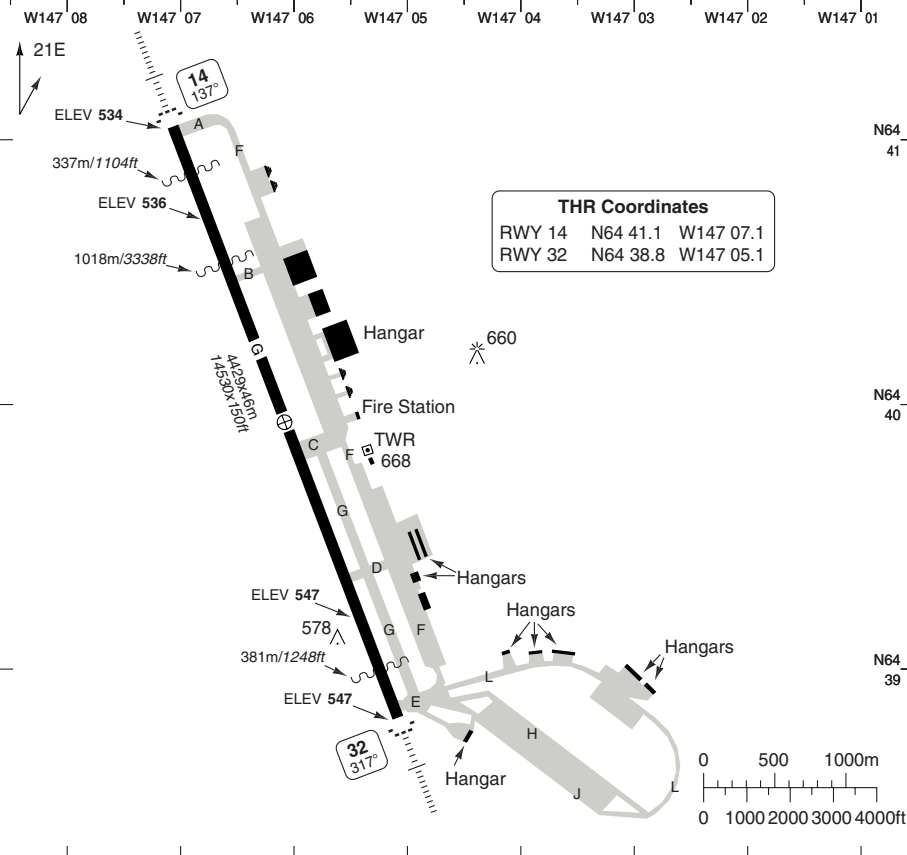
AERODROME

Eielson AFB **FAIRBANKS**

10 - 1

Eielson GND 121.8	TWR 127.2	Fairbanks DEP 126.5 (E)	Eielson ATIS 119.9
-----------------------------	---------------------	-----------------------------------	------------------------------

AD Elev 547	ARP: N64 39.9 W147 06.1	RFF: Not published	AD HR: 16-08
--------------------	-------------------------	--------------------	--------------



RWY	Slope	TORA m/ft	LDA m/ft	ALS	REDL	Additional
14	0	4429 / 14530	4429 / 14530	H-H	H	P 2.7° (48)
32	0	4429 / 14530	4429 / 14530	H-H	H	P 2.7° (49)

Change: New spec.

THIS CHART IS A PART OF NAVIGRAPH NDAC AND IS INTENDED FOR FLIGHT SIMULATION USE ONLY

AERODROME

Eielson AFB **FAIRBANKS**

10 - 2

GENERAL INFORMATION

1. AERODROME RESTRICTION

PPR 24hrs before filling flight plan.

2. WARNING

2.1 Waterfowl and other birds pose a significant hazard during period of standing water.

2.2 Moose in vicinity of AD.

2.3 Braking action on RWY significantly reduced during wet conditions.

3. SPEED

MAX 250kt below 10000ft.

4. CIRCUITS

RWY 14 right hand circuit.

5. TRAFFIC NOTE

Avoid small Arm Range located 2.5nm of approach end RWY 32.

6. TWY RESTRICTION

6.1 TWY F from TWY C to TWY D, MAX wingspan 41m/133ft when any ACFT is parked on L row.

6.2 TWY G restricted to centre keel, E and W TWY lines closed to all ACFT movement.

7. APRON

Portion of Apron O and South Ramp not visible from TWR.

8. DEPARTURE

MAX 1500 untilt DER.

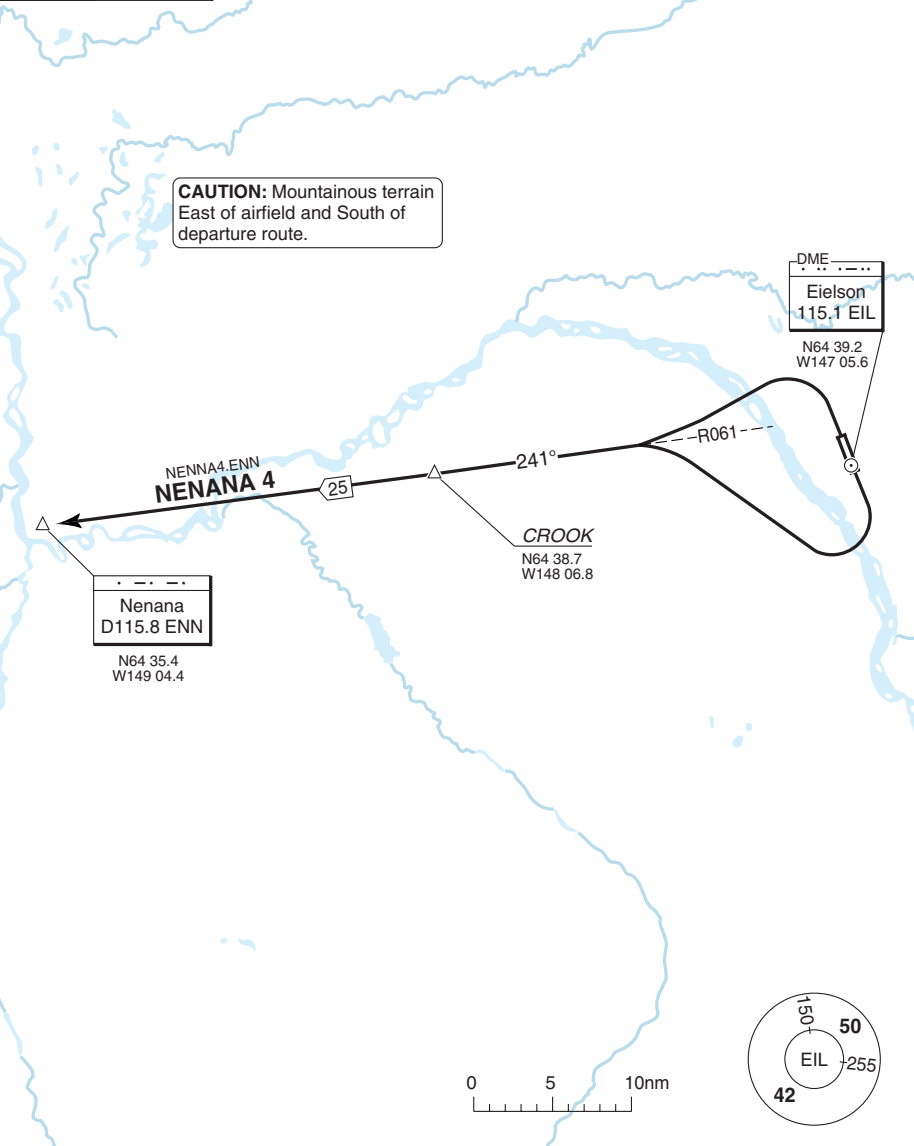
SID NENANA 4

Eielson AFB FAIRBANKS

Eielson GND 121.8	TWR 127.2	Fairbanks APP 125.35 180°-359° 126.5 360°-179°	DEP 126.5 (E)	Eielson ATIS 119.9
-----------------------------	---------------------	--	-------------------------	------------------------------

TA 18000 AD Elev 547

CAUTION: Mountainous terrain East of airfield and South of departure route.



30 - 1

SPEED: MAX 250kt below 10000ft.

RWY	MNM Climb	Routeing
14	4.6% to 3500	After TKOF turn right - 241°/R061 ENN - CROOK - ENN.
32	4.1% to 3800	After TKOF turn left - 241°/R061 ENN - CROOK - ENN.

Change: New spec.

THIS CHART IS A PART OF NAVIGRAPH NDAC AND IS INTENDED FOR FLIGHT SIMULATION USE ONLY