

Airport information:

Country: United States of America

City: WILEY POST

Coordinates: N 71° 17.1', W 156° 46.1'

Elevation: 52

Customs:

Fuel: 100LL, Jet A1

RFF: Index B

hours: 0600-2030.

Runways:

Runway 07

Takeoff length: 2164, Landing length: 1798

Runway 25

Takeoff length: 2164, Landing length: 1798

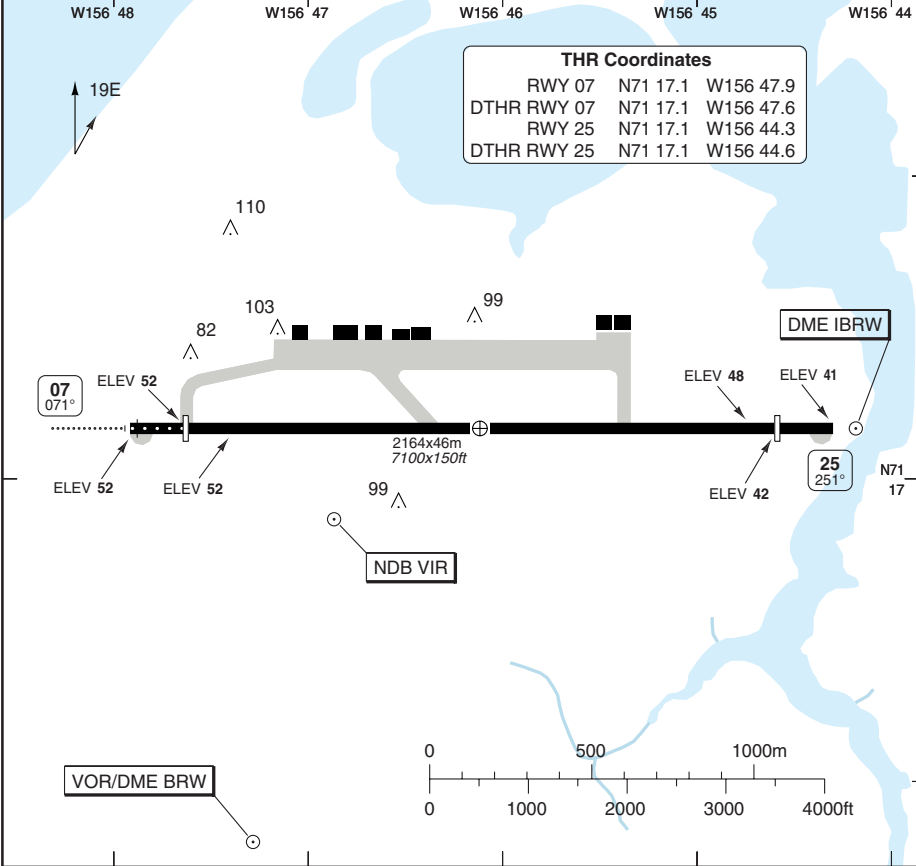
AERODROME

Wiley Post-Will Rogers MEM BARROW

10 - 1

Barrow AFIS 132.15	RADIO 123.6 CTAF 122.2 122.6 For high ALT tfc only	Anchorage Center DEP 135.3
------------------------------	---	--------------------------------------

AD Elev 52	ARP: N71 17.1 W156 46.1	RF: Index B	AD HR: 1500 - 0530
-------------------	-------------------------	-------------	--------------------



RWY	Slope	TORA m/ft	LDA m/ft	ALS	REDL	Additional
07	-0.2	2164 / 7100	1981 / 6500	M-I ①	H	P 3° (51)
25	+0.2	2164 / 7100	1981 / 6500	-	H	P 3° (50), REIL

① 427m

ARCAL: 123.6 type K (RWY 07/25 7 clicks within 5 sec).

TERPS		TAKE OFF MINIMA	
RWY	Facilities	RVR/VIS	
		2 ENG	3-4 ENG
07/25	HREDL or RCLL or RCL	1600ft / ¼sm	
	Adequate vis ref	¼sm	
	Standard minima	5000ft / 1sm	2400ft / ½sm

© Navtech - pabr01laorg0

Change: New chart.

THIS CHART IS A PART OF NAVIGRAPH NDAC AND IS INTENDED FOR FLIGHT SIMULATION USE ONLY

AERODROME

Wiley Post-Will Rogers MEM **BARROW**

10 - 2

GENERAL INFORMATION

1. AERODROME RESTICTION

- 1.1 PPR for ACFT with the passenger capacity more than 30 passengers.

2. WARNING

- 2.1 Migratory waterfowl in vicinity of AD during Spring through Fall.

3. SPEED

- 3.1 MAX 250kt below 10000ft.

4. CIRCUITS

- 4.1 RWY 07 right hand circuit.

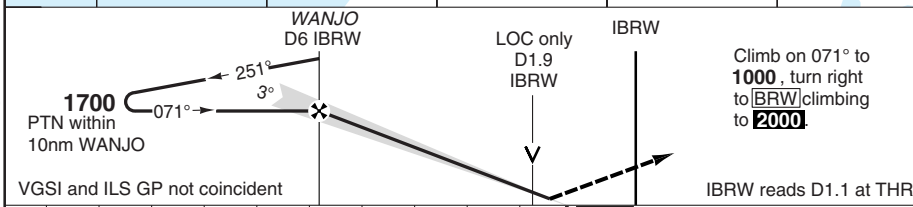
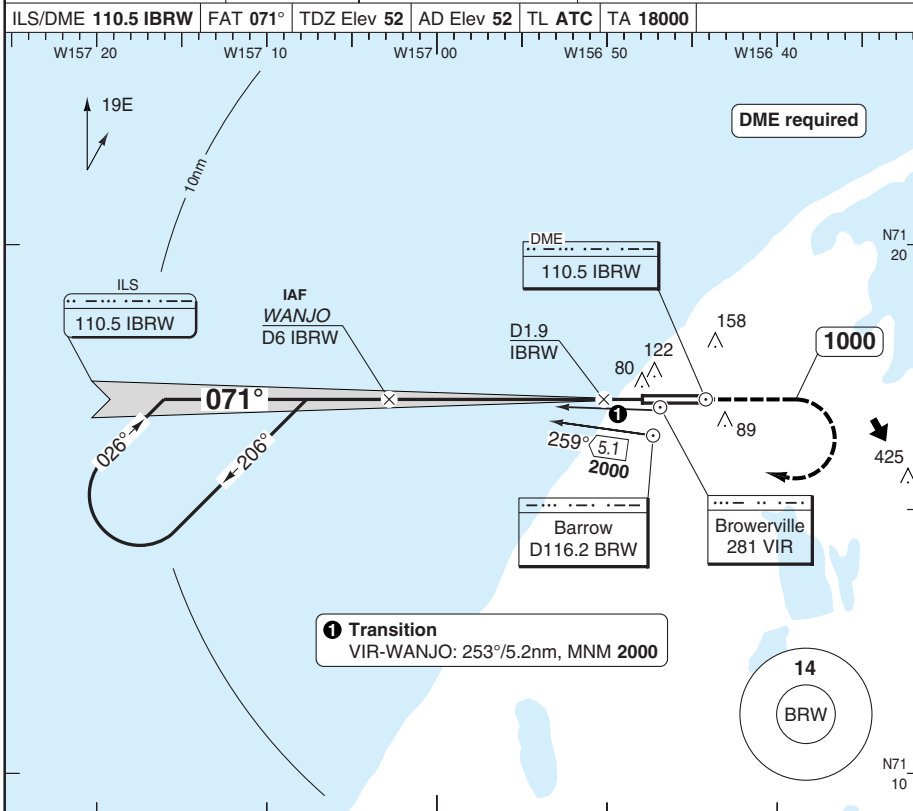
5. TAXI

- 5.1 Larger ACFT use turning pads to turn on RWY.

ILS RWY 07

Wiley Post-Will Rogers MEM BARROW

Anchorage Center APP 135.3	Barrow AFIS 132.15	RADIO 123.6 CTAF 122.2 122.6 For high ALT t/c only	
ILS/DME 110.5 IBRW	FAT 071°	TDZ Elev 52	AD Elev 52 TL ATC TA 18000



nm 10 9 8 7 6 5 4 3 2 1 0 TCH 57

ACFT	ILS+DME	LOC+DME	Circling (b)
C	260 (200) 2600ft a	340 (288) 3000ft	660 (600) 1½sm
D			760 (700) 2½sm

b Authorisation required, otherwise **1060** (1000) / 3sm.

DME IBRW	3.1° ALT	LDA 1981x46 6500x150ft P 3° (51)
6	1700	
5	1380	
4	1050	
3	730	
2	400	
1.8	340	

GS	80	100	120	140	160
ROD 3.1°	440	550	660	770	880

a RVR 1800ft: HUD or AP to DA required, NA when using Atkasuk altimeter setting.

Change: New chart.

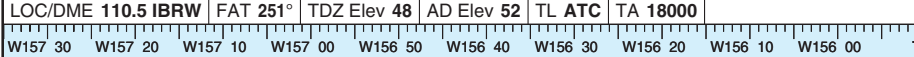
© Navtech - pabr01aiip00

50 - 1

BACKBEAM **LOC** RWY 25

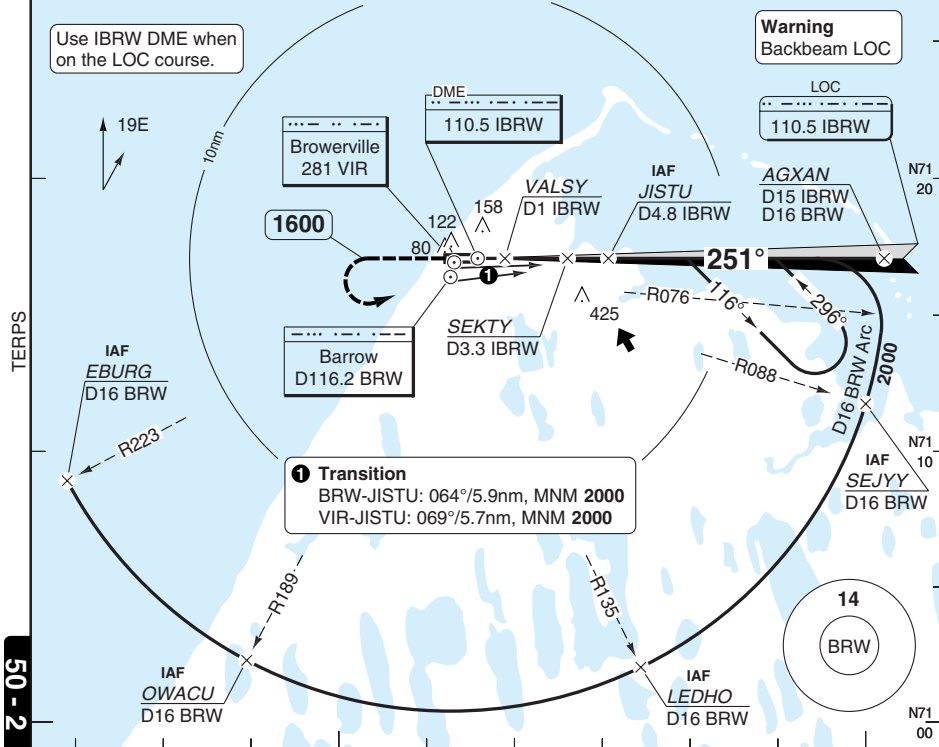
Wiley Post-Will Rogers MEM **BARROW**

Anchorage Center APP 135.3	Barrow AFIS 132.15	RADIO 123.6 CTAF 122.2 122.6 For high ALT tfc only	
LOC/DME 110.5 IBRW	FAT 251°	TDZ Elev 48	AD Elev 52
TL ATC		TA 18000	



Use IBRW DME when on the LOC course.

Warning
Backbeam LOC



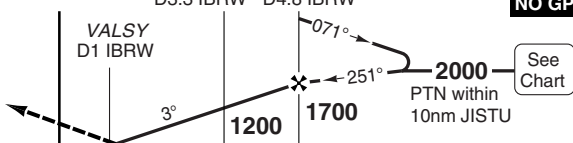
1 Transition
BRW-JISTU: 064°/5.9nm, MNM 2000
VIR-JISTU: 069°/5.7nm, MNM 2000

50 - 2

MAPt	D1 IBRW / VALSY	IBRW	SEKTY D3.3 IBRW	JISTU D4.8 IBRW
------	-----------------	------	-----------------	-----------------

Climb on 251° to 1600, turn left to [BRW] climbing to 2000.

NO GP



TCH	50	0	1	2	3	4	5	6	7	8	9	10	11 nm
-----	----	---	---	---	---	---	---	---	---	---	---	----	-------

ACFT	Backb. LOC+DME	Circling ⓐ	ⓐ Authorisation required, otherwise 1060 (1000) / 3sm.	DME IBRW	3.1° ALT	LDA 1981x46 6500x150ft P 3° (50)
C	320 (272) 1½sm	660 (600) 1½sm		5.7	2000	
D		760 (700) 2½sm		5	1770	
				4	1440	
				3	1120	
				2	790	
				1	460	
				0.6	320	
GS	80	100	120	140	160	NALS
ROD 3.1°	440	550	660	770	880	

© Navtech - pabro2iaip00

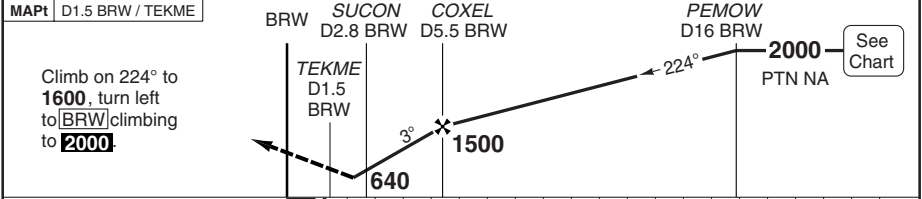
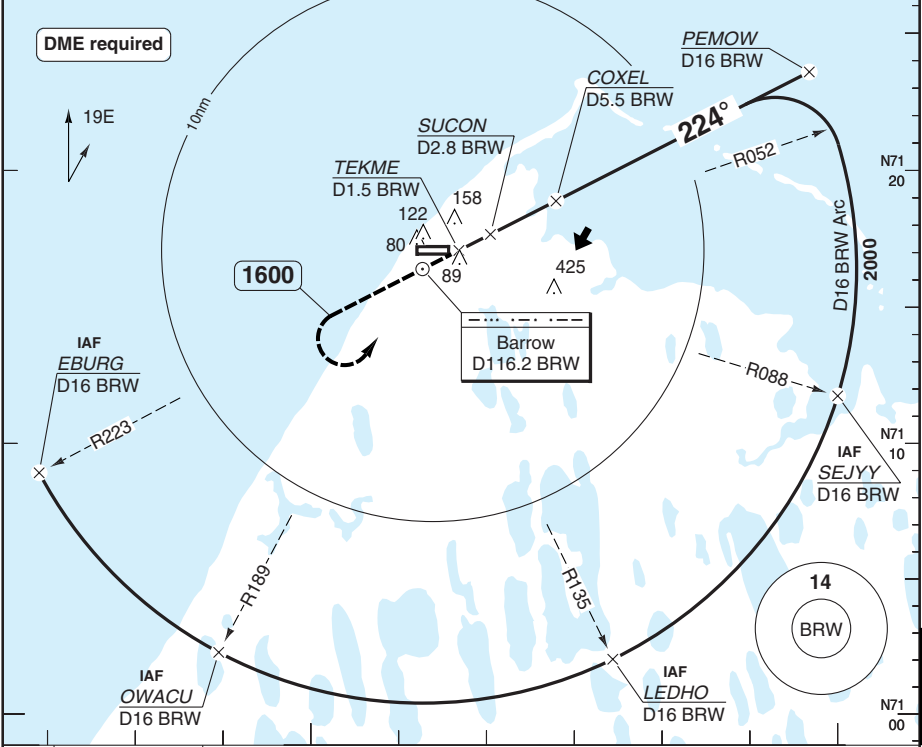
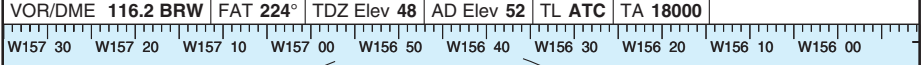
Change: New chart.

THIS CHART IS A PART OF NAVIGRAPH NDAC AND IS INTENDED FOR FLIGHT SIMULATION USE ONLY

VOR RWY 25 VOR/DME

Wiley Post-Will Rogers MEM **BARROW**

Anchorage Center APP 135.3	Barrow AFIS 132.15	RADIO 123.6 CTAF 122.2 122.6 For high ALT tfc only	
VOR/DME 116.2 BRW	FAT 224°	TDZ Elev 48	AD Elev 52 TL ATC TA 18000



TCH 50

ACFT	VOR+DME	Circling a
C	340 (292) 5000ft	660 (600) 1½sm
D		760 (700) 2½sm

a Authorisation required, otherwise **1060** (1000) / 3sm.

DME BRW	3.0° ALT	LDA 1981x46
7.1	2000	6500x150ft P 3° (50)
6	1670	
5	1350	
4	1030	
3	710	
1.9	340	

GS	80	100	120	140	160
ROD 3.0°	430	540	640	750	860

Change: New chart.

© Navtech - pabro3iaip00

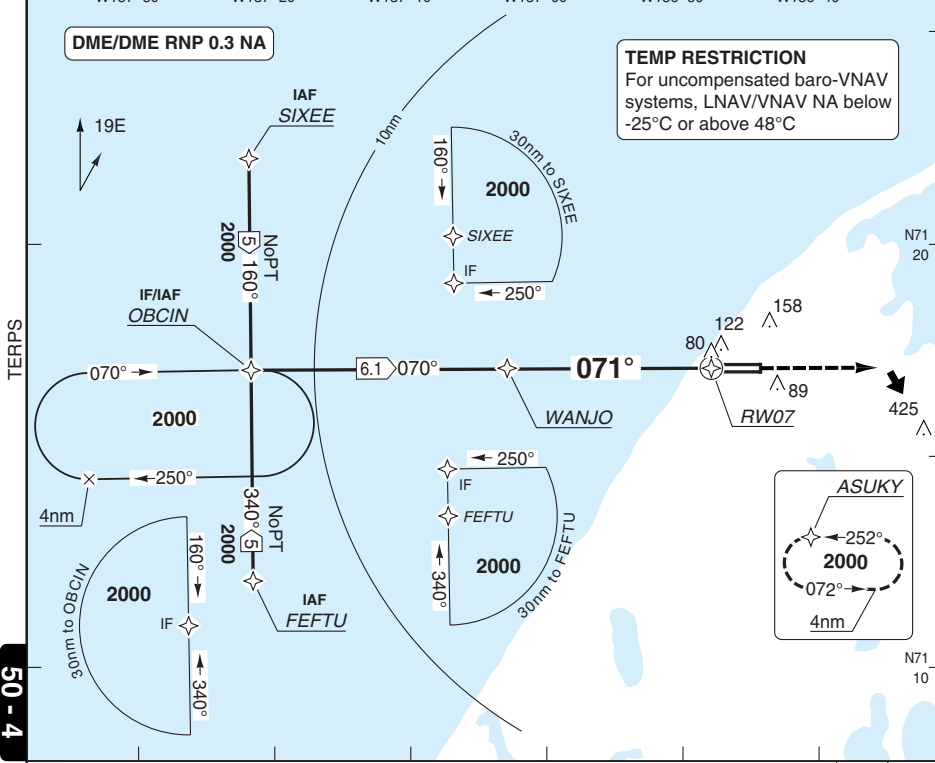
50 - 3

RNAV (GPS) RWY 07

Wiley Post-Will Rogers MEM BARROW

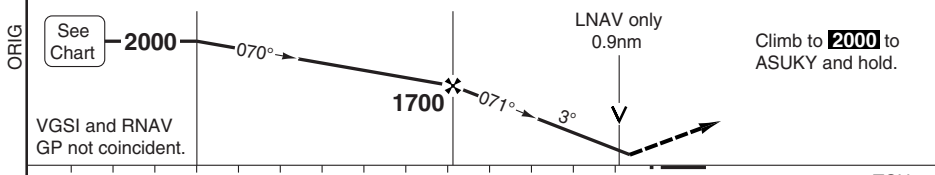
Anchorage Center APP 135.3		Barrow AFIS 132.15		RADIO 123.6 CTAF 122.2 122.6 For high ALT tfc only	
--------------------------------------	--	------------------------------	--	---	--

RNAV	FAT 071°	TDZ Elev 52	AD Elev 52	TL ATC	TA 18000
------	----------	-------------	------------	--------	----------



50 - 4

ORIG	OBCIN	WANJO	MAPt	RW07
------	-------	-------	------	------



nm	14	13	12	11	10	9	8	7	6	5	4	3	2	1	0	TCH 57
----	----	----	----	----	----	---	---	---	---	---	---	---	---	---	---	--------

ACFT	LPV	LNAV/VNAV	LNAV	Circling ^a
C	310 (250) 2800ft	350 (298) 3000ft	380 (328) 3500ft	660 (600) 1½sm
D				760 (700) 2½sm

THR	3.1° ALT	LDA 1981x46 6500x150ft P 3° (51)
07	2000	
5.8	1740	
5	1410	
4	1090	
3	760	
2	380	
0.8		

GS	80	100	120	140	160	^a Authorisation required, otherwise 1060 (1000) / 3sm.
ROD 3.1°	440	550	660	770	880	

© Navtech - pabro4iaip00

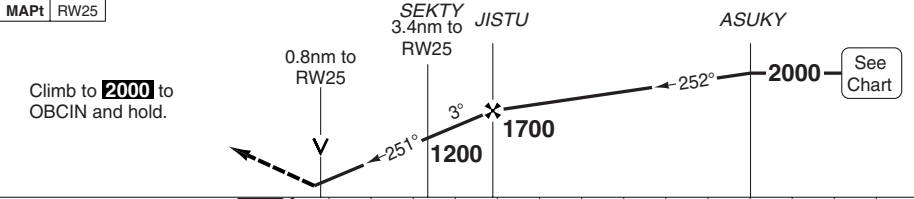
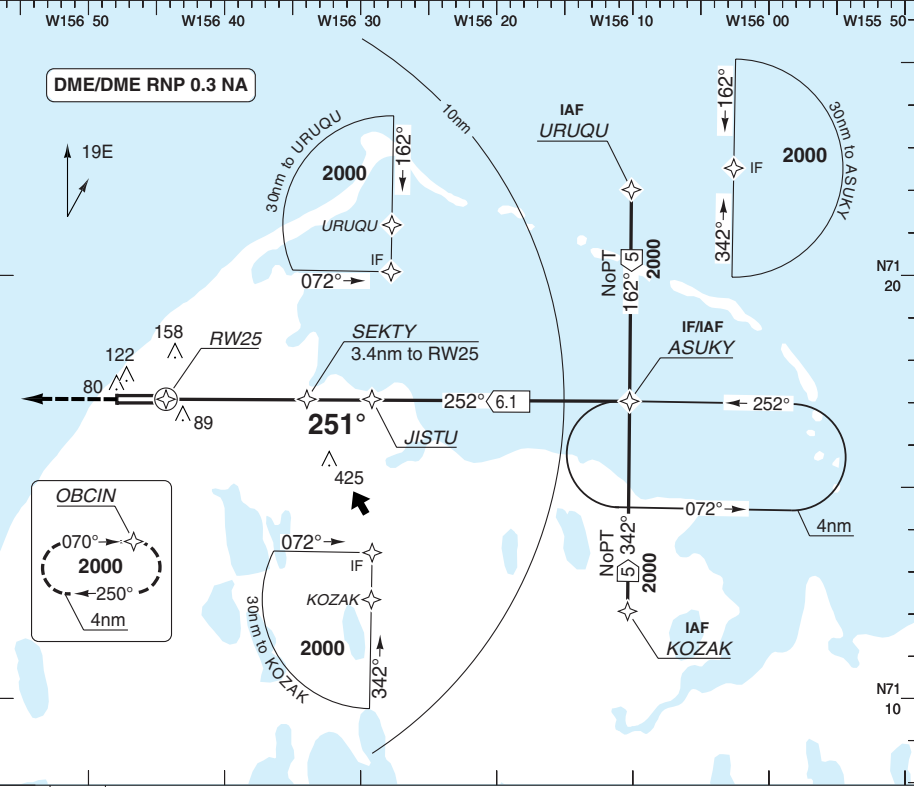
Change: New chart.

RNAV (GPS) RWY 25

Wiley Post-Will Rogers MEM BARROW

Anchorage Center APP 135.3		Barrow AFIS 132.15		RADIO 123.6 CTAF 122.2 122.6 For high ALT t/c only	
--------------------------------------	--	------------------------------	--	---	--

RNAV	FAT 251°	TDZ Elev 48	AD Elev 52	TL ATC	TA 14000
------	----------	-------------	------------	--------	----------



ACFT	LNAV	Circling ⓐ	ⓐ Authorisation required, otherwise 1060 (1000) / 3sm.			THR 25	3.1° ALT	LDA 1981x46
C	360 (312) 5000ft	660 (600) 1½sm	5.8	2000	6500x150ft	5	1740	P 3° (50)
D		760 (700) 2½sm	4	1410	3	1080	2	760
GS	80	100	120	140	160	0.8	360	
ROD 3.1°	440	550	660	770	880			

Change: New chart.

50 - 5

NALS Reverse side blank

© Navtech - pabr05aiip00