

Airport information:

Country: Iran

City: ZAHEDAN INTL

Coordinates: N 29° 28.4', E060 54.2

Elevation: 4522

Customs: Customs O/R

Fuel: Jet A1

RFF: CAT 7

hours: AD Administration: 0330-1000, ATS: H24

Runways:

Runway 17

Takeoff length: 4004, Landing length: 4274

Runway 35

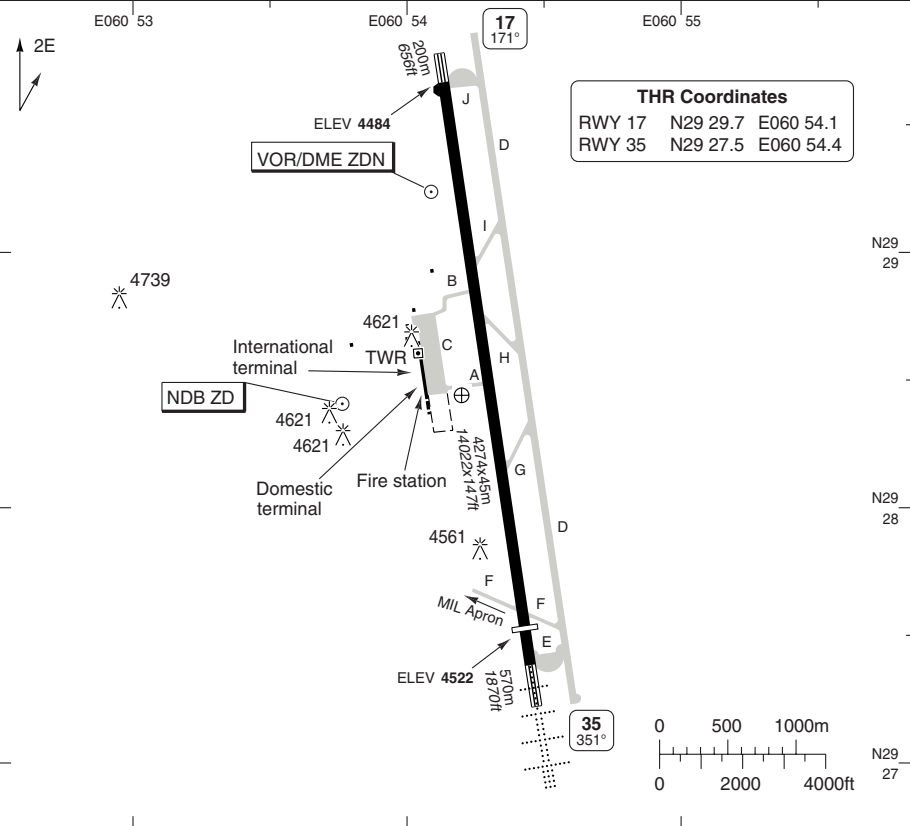
Takeoff length: 4274, Landing length: 4004

AERODROME

Zahedan TWR
118.1 119.4
121.9

ATIS
128.45

AD Elev 4522 ARP: N29 28.4 E060 54.2 RFF: CAT 7 AD HR: H24



THR Coordinates
RWY 17 N29 29.7 E060 54.1
RWY 35 N29 27.5 E060 54.4

RWY	Slope	TORA m/ft	LDA m/ft	ALS	REDL	Additional
17	+0.3	4004 / 13136	4274 / 14022	-	H ①	-
35	-0.3	4274 / 14022	4004 / 13136	H-C	H ①	P 3.2° (65)

① White.

EU OPS TAKE OFF MINIMA

RWY	Facilities	RVR			
		A	B	C	D
17/35	RCL (day only) or RCL + REDL	400m			
	NIL (day only)	500m			

GENERAL INFORMATION

- WARNING**
 - 1.1 Watch out for birds and dogs.
 - 1.2 Displaced THR marking not avbl.
- TWY RESTRICTION**

Only TWY A and B are lighted.

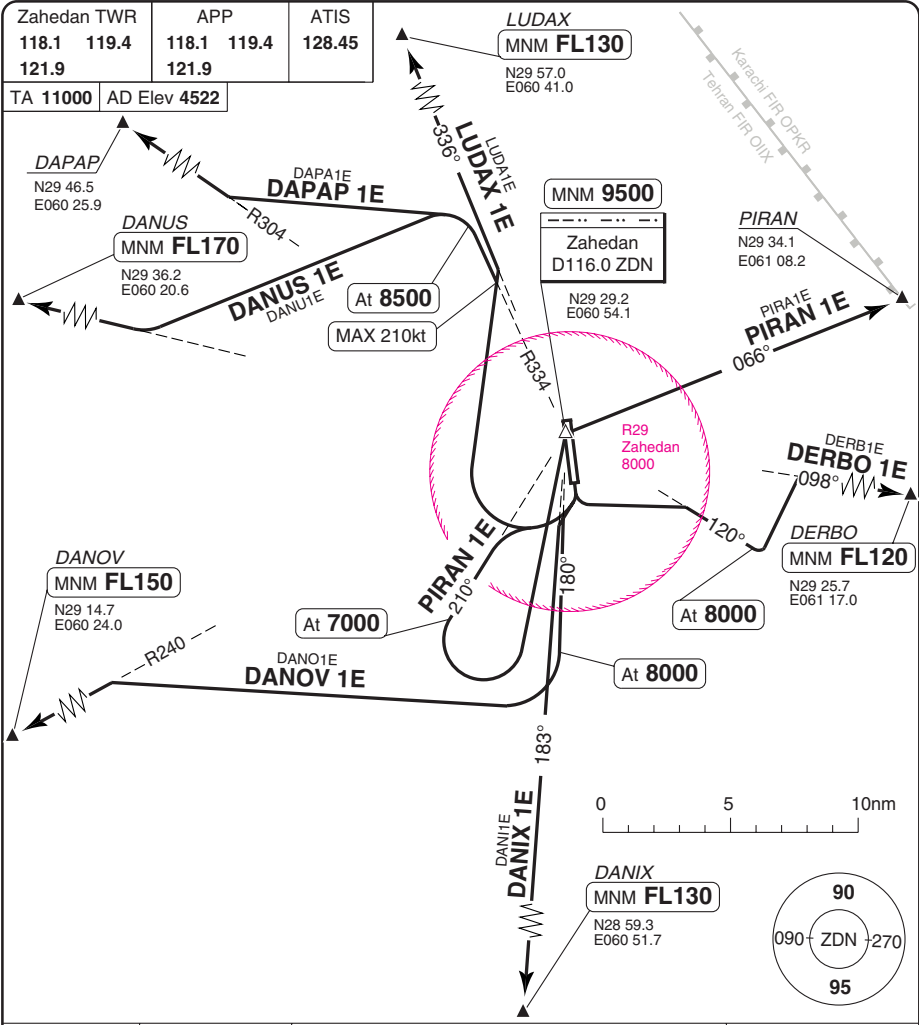
© Navtech - oizh01laorg0

Reverse side blank

Change: New spec.

THIS CHART IS A PART OF NAVIGRAPH NDAC AND IS INTENDED FOR FLIGHT SIMULATION USE ONLY

SID RWY 17 VOR



30 - 1

SID	MNM Climb	Routeing	Altitudes
DANIX 1E	5% upto 8000	After TKOF turn right - intcp R183 ZDN - DANIX.	DANIX MNM FL130
DANOV 1E	4.5% upto 9000	After TKOF turn right - intcp R180 ZDN - at 8000 turn right - intcp R240 ZDN - DANOV.	DANOV MNM FL150
DANUS 1E		After TKOF turn right (MAX 210kt) - intcp R334 ZDN - at 8500 turn left - intcp R282 - DANUS.	DANUS MNM FL170
DAPAP 1E		After TKOF turn right (MAX 210kt) - intcp R334 ZDN - at 8500 turn left - intcp R304 ZDN - DAPAP.	
DERBO 1E	4.2% upto 6000	After TKOF turn left - intcp R120 ZDN - at 8000 turn left - intcp R098 ZDN - DERBO.	DERBO MNM FL120
LUDAX 1E		After TKOF turn right (MAX 210kt) - intcp R336 ZDN - LUDAX.	LUDAX MNM FL130
PIRAN 1E	4.8% upto 7000	After TKOF turn right - intcp R210 ZDN - at 7000 turn left - ZDN - turn right - intcp R066 - PIRAN.	ZDN MNM 9500

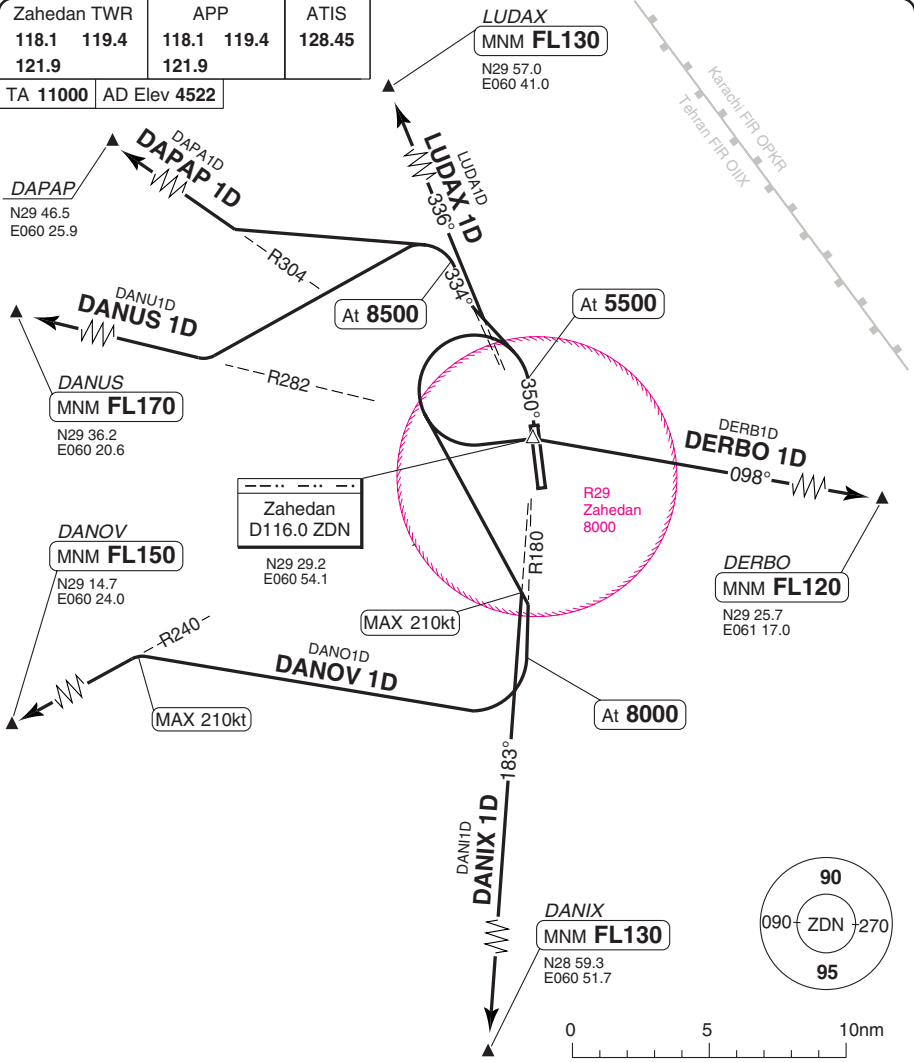
© Navitech - oizh01daorgo

Change: New spec.

THIS CHART IS A PART OF NAVIGRAPH NDAC AND IS INTENDED FOR FLIGHT SIMULATION USE ONLY

SID RWY 35 VOR

Zahedan TWR	APP	ATIS
118.1 119.4	118.1 119.4	128.45
121.9	121.9	
TA 11000	AD Elev 4522	



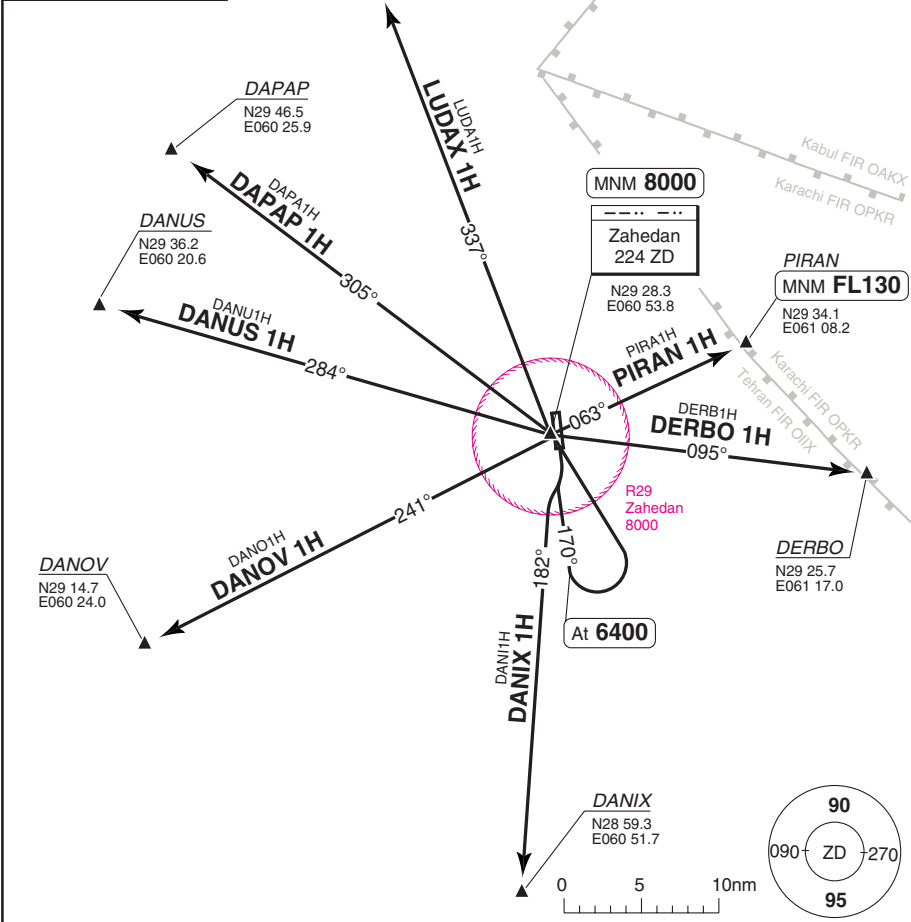
SID	MNM Climb	Routeing	Altitudes
INITIAL CLIMB		Climb on R350 ZDN - at 5500 turn left - follow SID.	
DANIX 1D	5.3% upto 8000	Intcp R183 ZDN (MAX 210kt) - DANIX.	DANIX MNM FL130
DANOV 1D	5.3% upto 9000	Intcp R180 ZDN - at 8000 turn right - (MAX 210kt) intcp R240 ZDN - DANOV.	DANOV MNM FL150
DANUS 1D		Intcp R334 ZDN - at 8500 turn left - intcp R282 ZDN - DANUS.	DANUS MNM FL170
DAPAP 1D		Intcp R334 ZDN - at 8500 turn left - intcp R304 ZDN - DAPAP.	
DERBO 1D	5.3% upto 8000	Cross ZDN - intcp R098 ZDN - DERBO.	DERBO MNM FL120
LUDAX 1D		Intcp R336 ZDN - LUDAX.	LUDAX MNM FL130

Change: New spec.

THIS CHART IS A PART OF NAVIGRAPH NDAC AND IS INTENDED FOR FLIGHT SIMULATION USE ONLY

SID RWY 17 NDB

Zahedan TWR	APP	ATIS
118.1 119.4	118.1 119.4	128.45
121.9	121.9	
TA 11000	AD Elev 4522	



ALT RESTRICTION: Turn below **6400** is not authorized.
MNM CLIMB GRADIENT: (Except DANIX 1H - 5%) 4.3%.

SID	Routeing	Altitudes
INITIAL CLIMB (Except DANIX 1H)	Climb on 170° - at 6400 turn left - ZD - follow SID.	ZD MNM 8000
DANIX 1H	After TKOF turn right - intcp 182° from ZD - DANIX.	
DANOV 1H	Turn left - intcp 241° from ZD - DANOV.	
DANUS 1H	Turn left - intcp 284° from ZD - DANUS.	
DAPAP 1H	Turn left - intcp 305° from ZD - DAPAP.	
DERBO 1H	Turn right - intcp 095° from ZD - DERBO.	
LUDAX 1H	Intcp 337° from ZD - LUDAX.	
PIRAN 1H	Turn right - intcp 063° from ZD - PIRAN.	PIRAN MNM FL130

© Navitech - oizh03daorgo

Change: New spec.

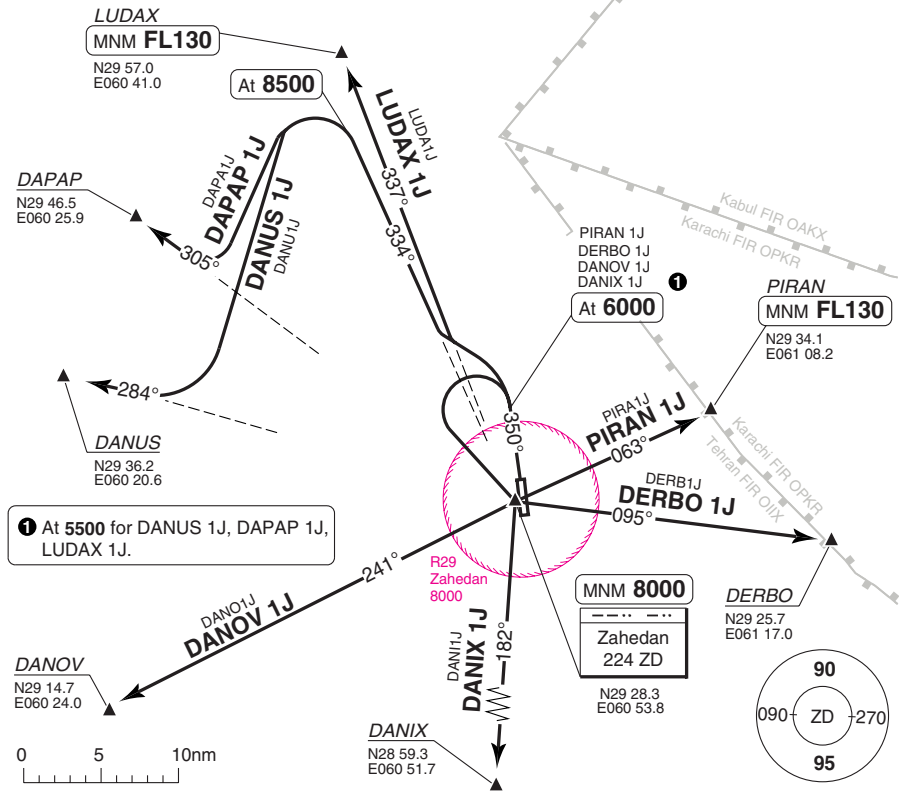
THIS CHART IS A PART OF NAVIGRAPH NDAC AND IS INTENDED FOR FLIGHT SIMULATION USE ONLY

SID RWY 35 NDB

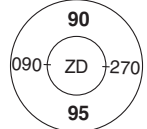
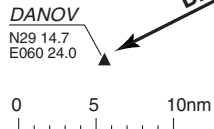
Zahedan TWR	APP	ATIS
118.1 119.4	118.1 119.4	128.45
121.9	121.9	

TA 11000 | AD Elev 4522

30 - 4



① At 5500 for DANUS 1J, DAPAP 1J, LUDAX 1J.



ALT RESTRICTION: (Except DANUS 1J, DAPAP 1J, LUDAX 1J) Turn below **6000** is not authorized.

SID	MNM Climb	Routing	Altitudes
DANIX 1J	5.3% upto overhead ZD	Climb on 350° - at 6000 turn left - ZD - intcp 182° from ZD - DANIX.	ZD MNM 8000
DANOV 1J	5.3% upto overhead ZD	Climb on 350° - at 6000 turn left - ZD - turn right - intcp 241° from ZD - DANOV.	ZD MNM 8000
DANUS 1J		Climb on 350° - at 5500 turn left - intcp 334° from ZD - at 8500 - intcp 284° from ZD - DANUS.	
DAPAP 1J		Climb on 350° - at 5500 turn left - intcp 334° from ZD - at 8500 - intcp 305° from ZD - DAPAP.	
DERBO 1J	5.3% upto overhead ZD	Climb on 350° - at 6000 turn left - ZD - intcp 095° from ZD - DERBO.	ZD MNM 8000
LUDAX 1J		Climb on 350° - at 5500 turn left - intcp 337° from ZD - LUDAX.	LUDAX MNM FL130
PIRAN 1J	5.3%	Climb on 350° - at 6000 turn left - ZD - intcp 063° from ZD - PIRAN.	ZD MNM 8000 PIRAN MNM FL130

© Navitech - oizh04daorg0

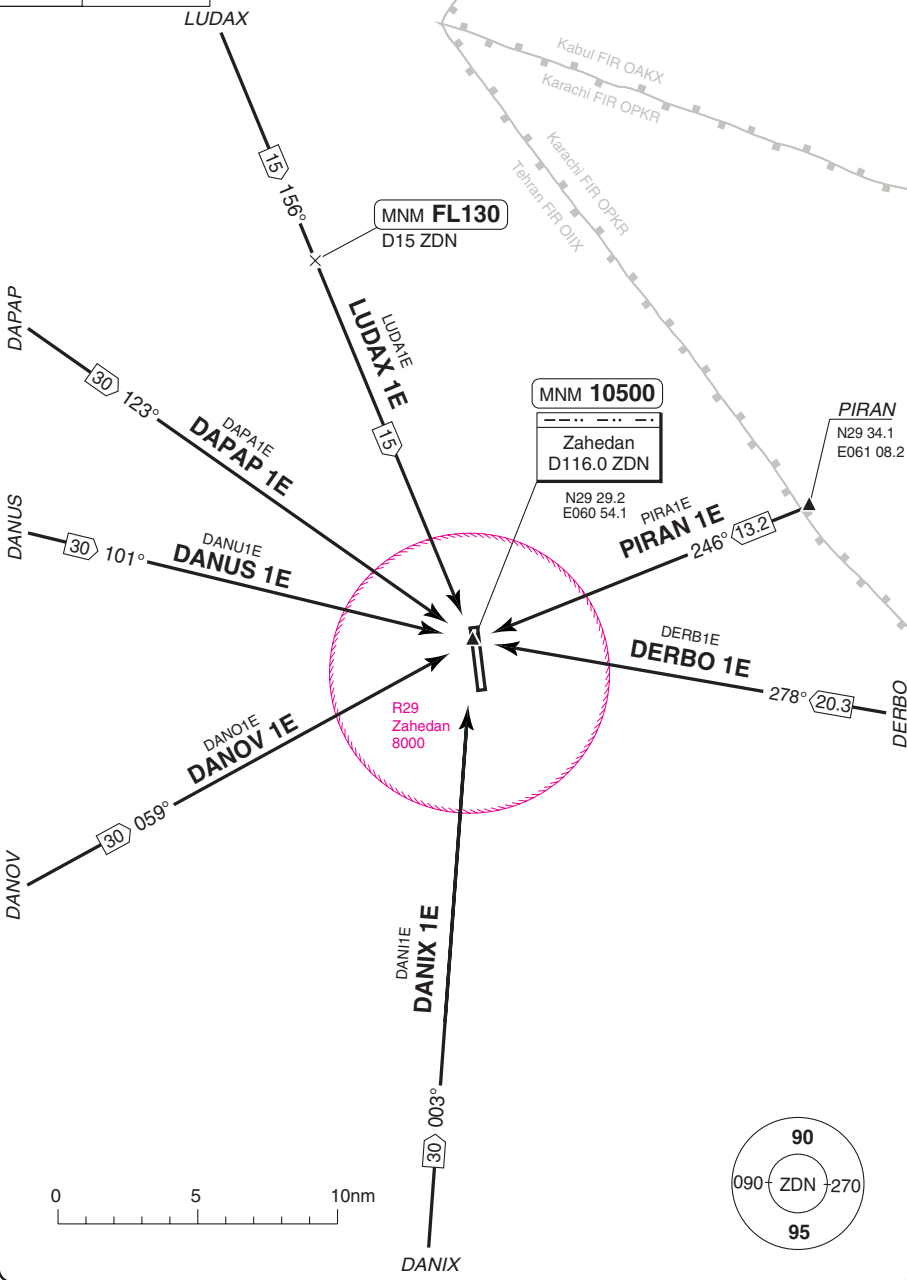
Change: New spec.

THIS CHART IS A PART OF NAVIGRAPH NDAC AND IS INTENDED FOR FLIGHT SIMULATION USE ONLY

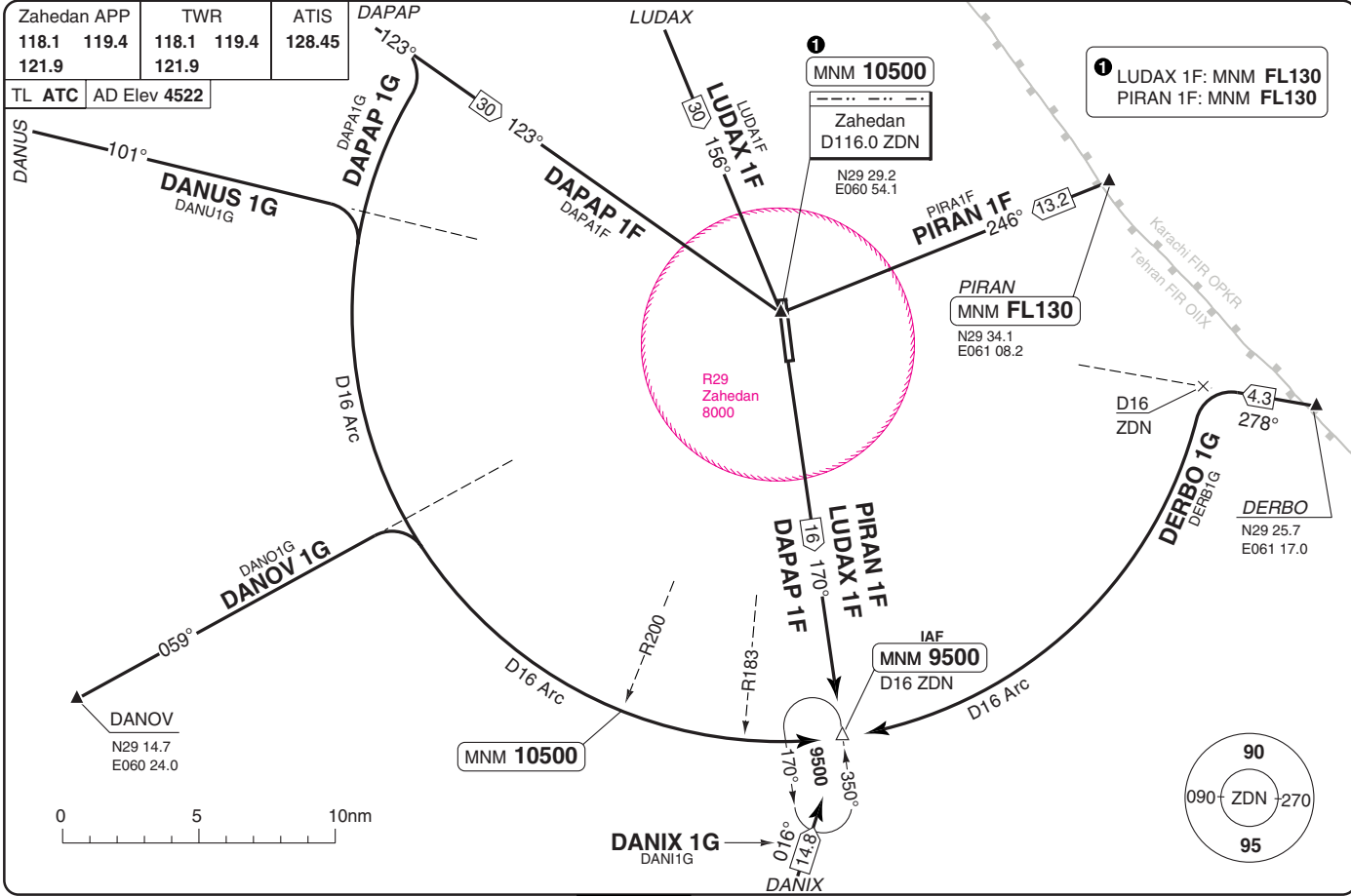
STAR RWY 35 ECHO

Zahedan APP		TWR		ATIS
118.1	119.4	118.1	119.4	128.45
121.9		121.9		

TL ATC AD Elev 4522



Zahedan APP		TWR		ATIS	
118.1	119.4	118.1	119.4	128.45	
121.9		121.9			
TL	ATC	AD Elev 4522			



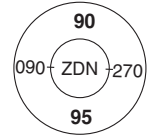
1 LUDAX 1F: MNM FL130
PIRAN 1F: MNM FL130

PIRAN
MNM FL130
N29 34.1
E061 08.2

DERBO
N29 25.7
E061 17.0

IAF
MNM 9500
D16 ZDN

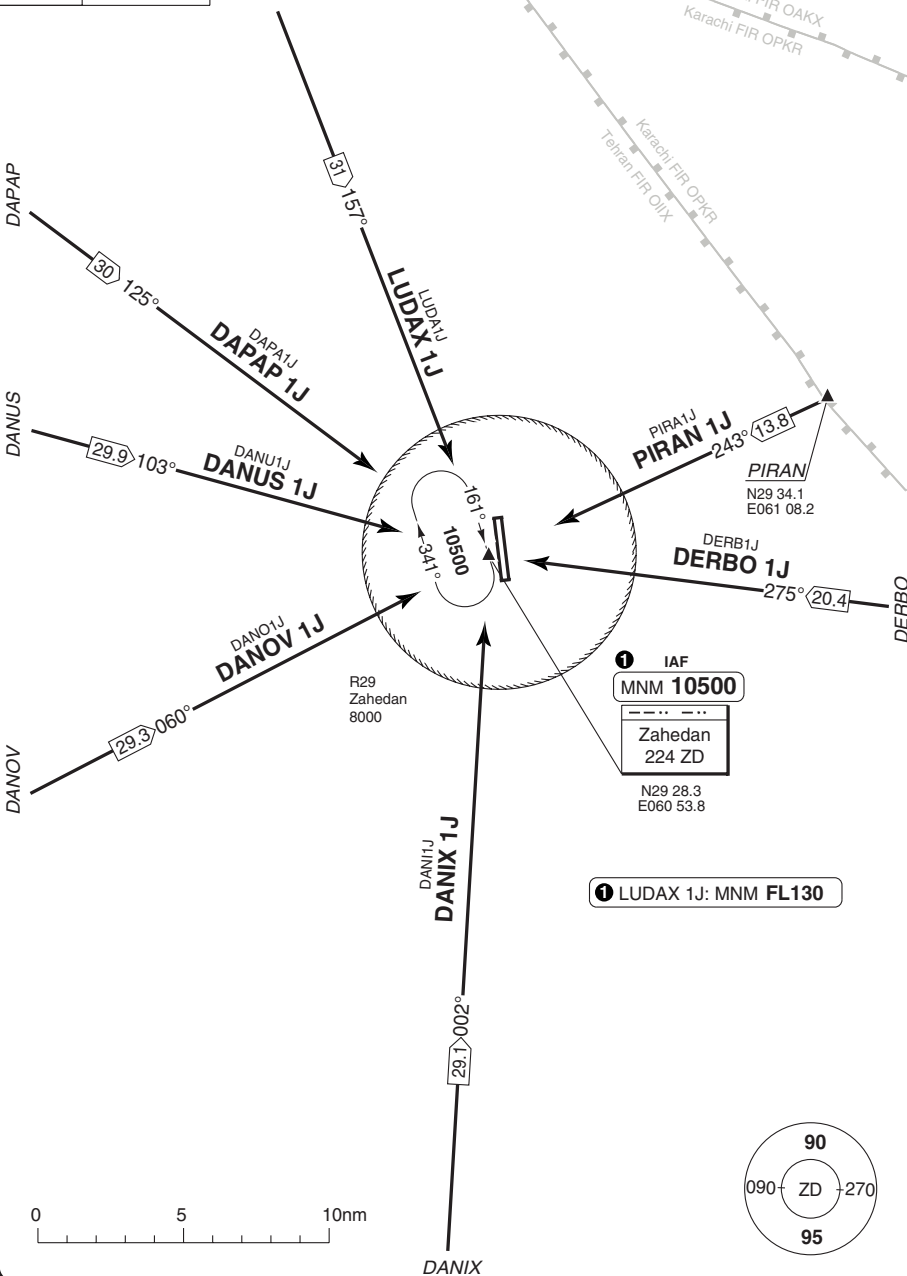
MNM 10500



STAR RWY JULIET

Zahedan APP		TWR		ATIS
118.1	119.4	118.1	119.4	128.45
121.9		121.9		

TL	ATC	AD Elev	4522	LUDAX
----	-----	---------	------	-------



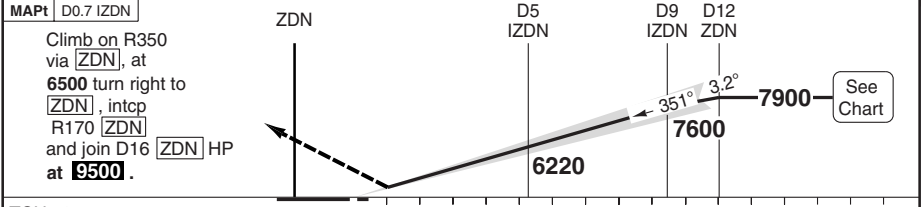
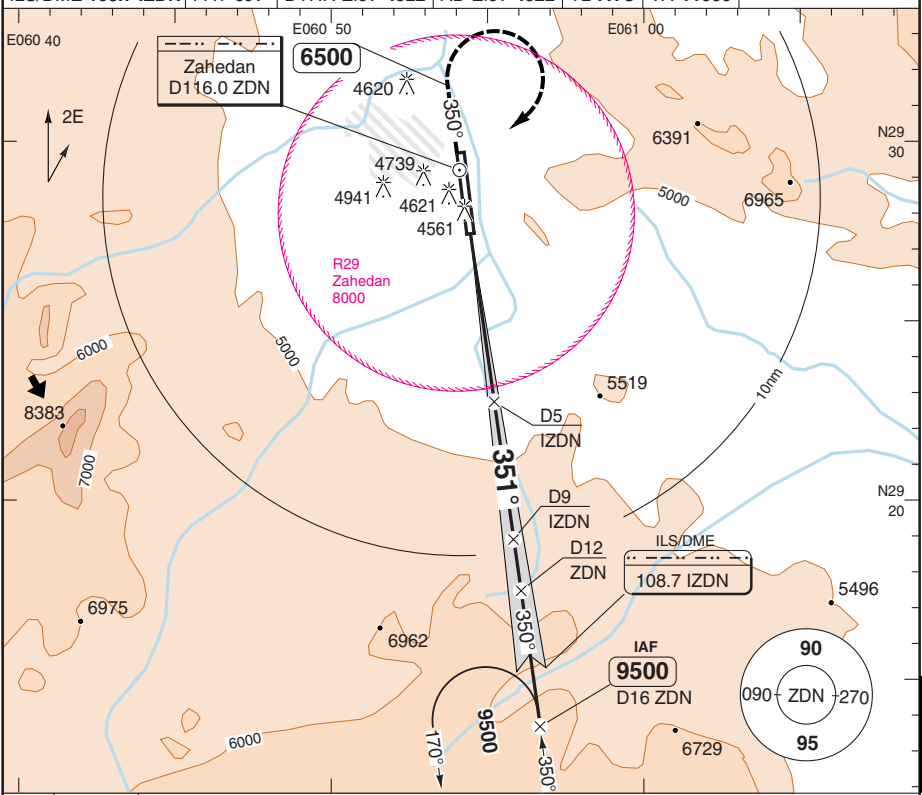
Change: New spec.

THIS CHART IS A PART OF NAVIGRAPH NDAC AND IS INTENDED FOR FLIGHT SIMULATION USE ONLY

ILS RWY 35 VOR/DME

Zahedan APP	TWR	ATIS	
118.1 119.4	118.1 119.4	128.45	
121.9	121.9		

ILS/DME 108.7 IZDN	FAT 351°	DTHR Elev 4522	AD Elev 4522	TL ATC	TA 11000
--------------------	----------	----------------	--------------	--------	----------



TCH 59		0 1 2 3 4 5 6 7 8 9 10 11 12 13 14 15 16 nm						
ACFT	ILS+DME 4.1%	LOC+DME 4.1%	Circling ^a		^a NA clockwise BTN R020 and R130.	DME IZDN	3.3° ALT	LDA 4004x45 13136x147ft P 3.2° (65)
A	4760 (238) 550m	5180 (658) 1500m	5650 (1128) 1.5km		7900	9.8	7900	
B			5650 (1128) 1.6km			8	7280	
C	5180 (658) 2300m	5650 (1128) 2.4km	5650 (1128) 3.6km		7	6930		
D					6	6580		
					5	6220		
					4	5870		
					3	5520		
					2.0	5180		
GS	80	100	120	140	160			
ROD 3.3°	480	590	710	830	950			

© Navtech - oizh01aiap00
EU OPS

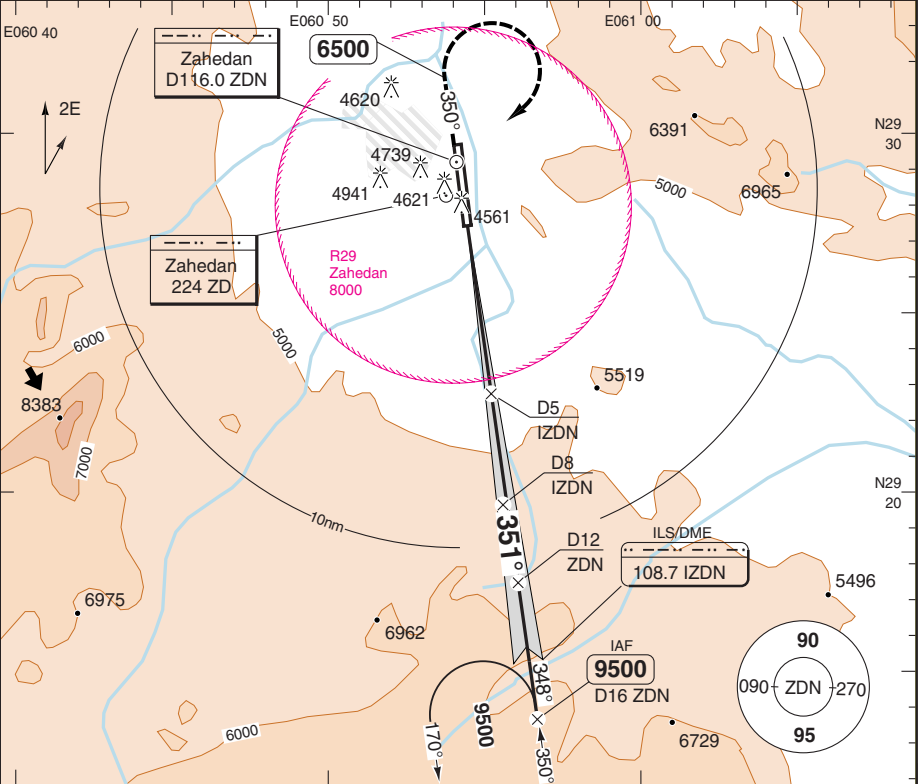
Change: New spec.

THIS CHART IS A PART OF NAVIGRAPH NDAC AND IS INTENDED FOR FLIGHT SIMULATION USE ONLY

ILS RWY 35 NDB/DME

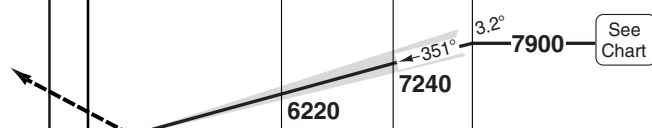
Zahedan APP	TWR	ATIS	
118.1 119.4	118.1 119.4	128.45	
121.9	121.9		

ILS/DME 108.7 IZDN	FAT 351°	DTHR Elev 4522	AD Elev 4522	TL ATC	TA 11000
--------------------	----------	----------------	--------------	--------	----------



MAPt	D0.7 IZDN	ZDN ZD	D5 IZDN	D8 IZDN	D12 ZDN
------	-----------	--------	---------	---------	---------

Climb on 350°, at **6500** turn right to **ZD**, then 168° from **ZD** to join D16 **ZDN** HP at **9500**.



TCH 59	0	1	2	3	4	5	6	7	8	9	10	11	12	13	14	15 nm
--------	---	---	---	---	---	---	---	---	---	---	----	----	----	----	----	-------

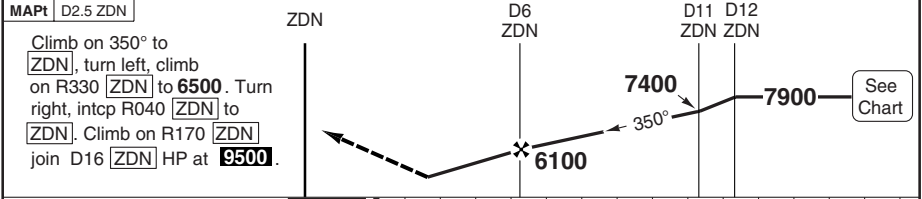
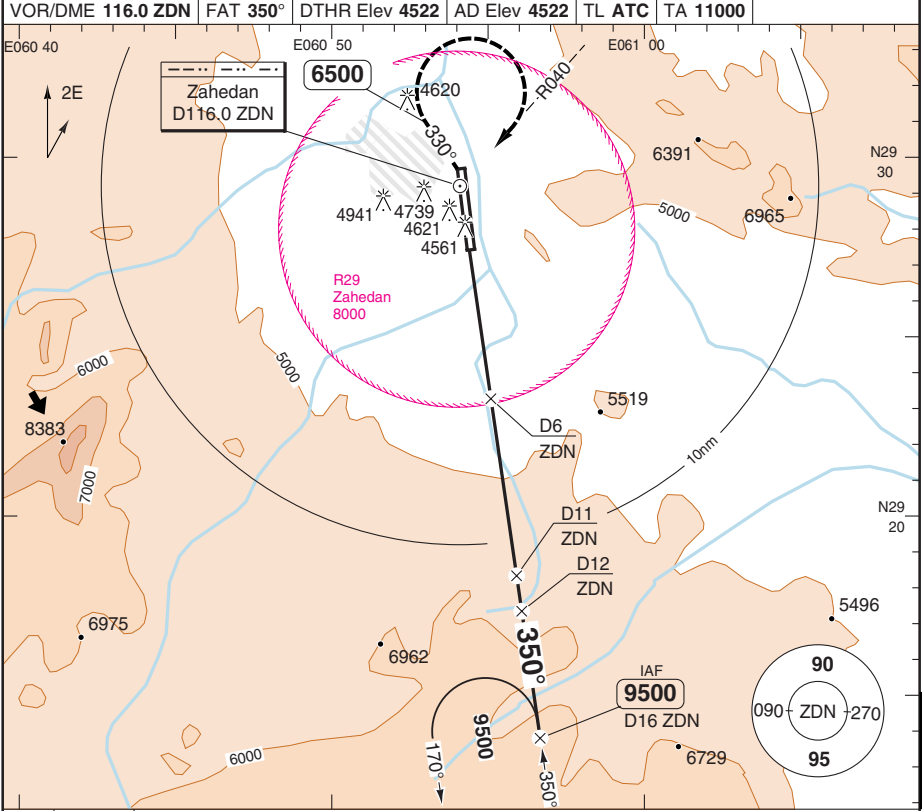
ACFT	ILS+DME 4.1%	LOC+DME 4.1%	Circling ^a	^a NA clockwise BTN BRG 020 and BRG 130	DME IZDN	3.3° ALT	LDA 400x45 13136x147ft P 3.2° (65)
A	4760 (238) 550m	5180 (658) 1500m	5650 (1128) 1.5km		9.8	7900	
B			5650 (1128) 1.6km		8	7280	
C		5180 (658) 2300m	5650 (1128) 2.4km		7	6930	
D			5650 (1128) 3.6km		6	6580	
					5	6220	
					4	5870	
					3	5520	
					2.0	5180	

© Navtech - oizh02iaip00

VOR RWY 35 VOR/DME 1

INTL ZAHEDAN

Zahedan APP	TWR	ATIS			
118.1 119.4	118.1 119.4	128.45			
121.9	121.9				
VOR/DME 116.0 ZDN	FAT 350°	DTHR Elev 4522	AD Elev 4522	TL ATC	TA 11000



MAPt D2.5 ZDN	ZDN					D6 ZDN	D11 ZDN	D12 ZDN	
<p>Climb on 350° to ZDN, turn left, climb on R330 ZDN to 6500. Turn right, intcp R040 ZDN to ZDN. Climb on R170 ZDN join D16 ZDN HP at 9500.</p>									
ACFT	VOR+DME a	Circling b	a MNM MISAP Climb gradient 3.3% up to 5000 ft			DME ZDN	3.5° ALT	LDA 4004x45 13136x147ft P 3.2° (65)	
A	5180 (658)	5650 (1128) 1.5km	b NA clockwise BTN R020 and R130.			10.9	7900		
B	1500m	5650 (1128) 1.6km			9	7210			
C	5180 (658)	5650 (1128) 2.4km			8	6840			
D	2300m	5650 (1128) 3.6km			7	6470			
					6	6100			
					5	5740			
					4	5370			
GS	80	100	120	140	160	3.5	5180	FALS	
ROD 3.5°	500	620	740	860	990				

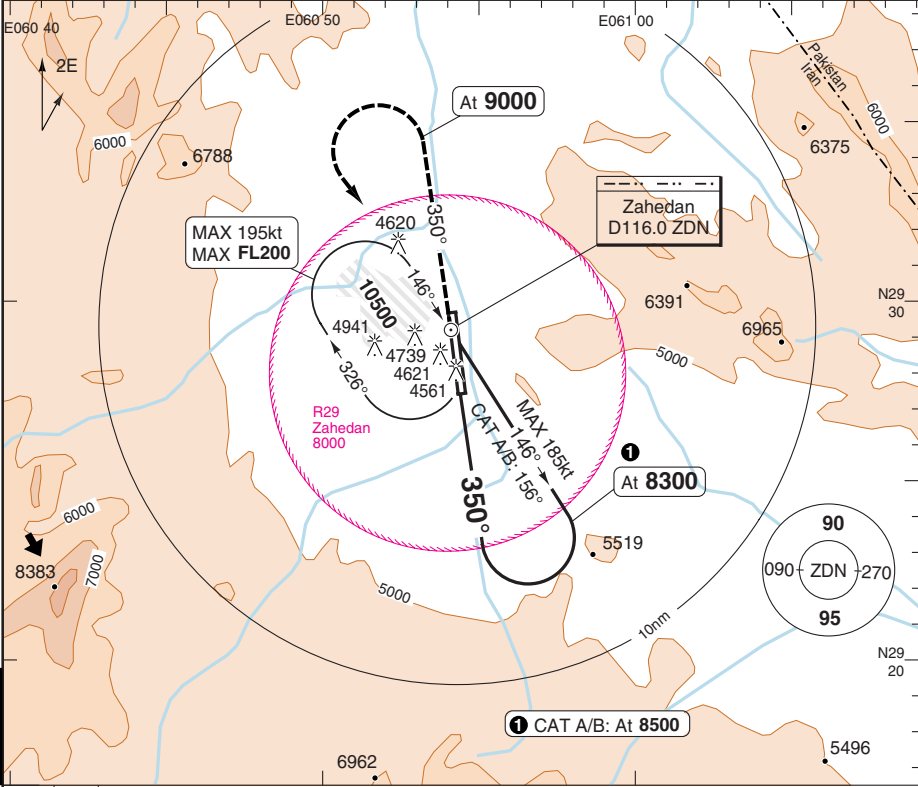
© Navtech - oizh03iaip00

50 - 3

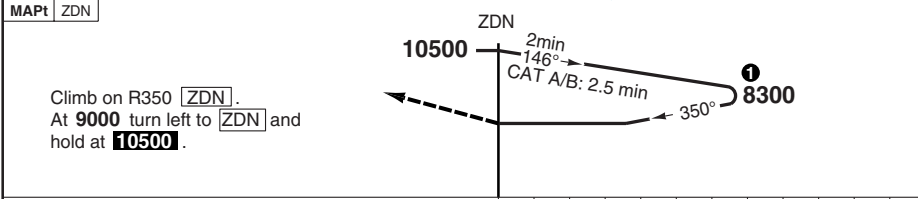
VOR 350 Circling

Zahedan APP	TWR	ATIS
118.1 119.4	118.1 119.4	128.45
121.9	121.9	

VOR/DME 116.0 ZDN	FAT 350°	THR Elev -	AD Elev 4522	TL ATC	TA 11000
-------------------	----------	------------	--------------	--------	----------



50 - 4



ACFT	VOR Circling
A	7530 (3008) 1.5km
B	7530 (3008) 1.6km
C	7530 (3008) 2.4km
D	7530 (3008) 3.6km

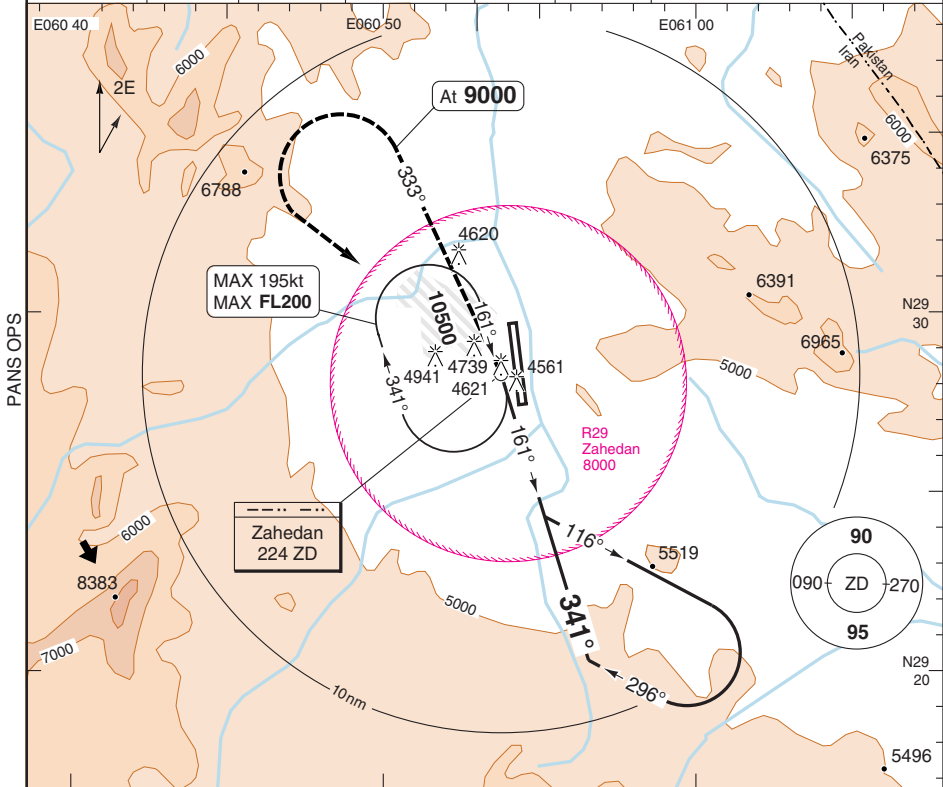
© Navtech - oizh04iaip00 EU OPS

Change: Minima.

NDB 341 Circling

Zahedan APP	TWR	ATIS
118.1 119.4	118.1 119.4	128.45
121.9	121.9	

NDB 224 ZD	FAT 341°	THR Elev -	AD Elev 4522	TL ATC	TA 11000
------------	----------	------------	--------------	--------	----------



MAPt ZD

Climb on 333° from **ZD**,
at **9000** turn left to **ZD** and
join HP at **10500**.



0 1 2 3 4 5 6 7 8 9 10 11 nm

ACFT	NDB Circling
A	7430 (2908) 1.5km
B	7430 (2908) 1.6km
C	7430 (2908) 2.4km
D	7430 (2908) 3.6km

© Navtech - oizh05iaip00

50 - 5

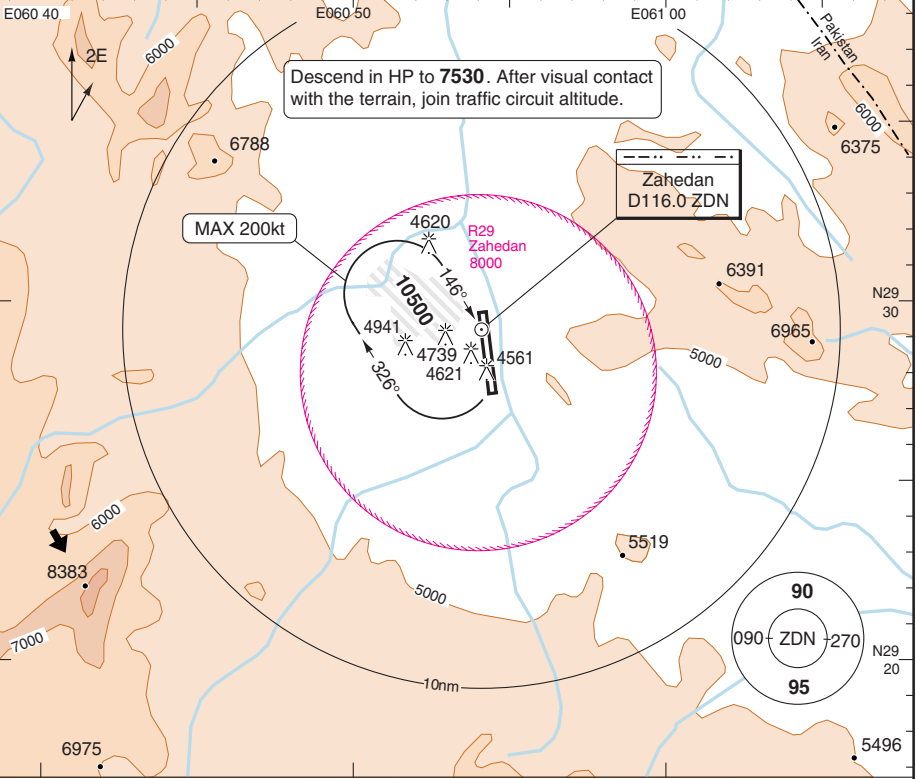
Change: Minima.

THIS CHART IS A PART OF NAVIGRAPH NDAC AND IS INTENDED FOR FLIGHT SIMULATION USE ONLY

VISUAL VMC LANDING PATTERN

Zahedan APP	TWR	ATIS
118.1 119.4	118.1 119.4	128.45
121.9	121.9	

THR Elev -	AD Elev 4522	TL ATC	TA 11000
------------	---------------------	--------	-----------------



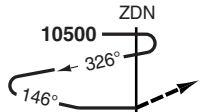
Descend in HP to **7530**. After visual contact with the terrain, join traffic circuit altitude.

Zahedan
D116.0 ZDN

MAX 200kt

PANS OPS

50 - 6



If not visual, proceed to overhead **ZDN**, climb to **10500** and join hold.



Note
MNM required visibility 5km.

© Navtech - oizh06iaip00

Change: New spec.

THIS CHART IS A PART OF NAVIGRAPH NDAC AND IS INTENDED FOR FLIGHT SIMULATION USE ONLY

JAR-OPS Landing Minima

INTL ZAHEDAN

The following Minima is for Public Transport aircraft and conforms to JAR-OPS1 regulations.

STRAIGHT-IN APPROACH		C				D			
R/W	Procedure	DA/ MDA QNH ft	DH/ MDH QFE ft	Vis m	Vis No ALS m	DA/ MDA QNH ft	DH/ MDH QFE ft	Vis m	Vis No ALS m
35	ILS/DME (M/App 4.1%) (1)	4760	240	600	1000	4760	240	600	1000
35	LOC/DME (M/App 4.1%) (1)	5180	660	1400	2000	5180	660	1800	2000
35	VOR/DME 1 (M/App 3.3%) (1)	5180	660	1400	2000	5180	660	1800	2000

Notes:

(1) Procedure based on aerodrome elevation.

CIRCLING		C			D		
R/W	Procedure	MDA QNH ft	MDH QFE ft	Vis m	MDA QNH ft	MDH QFE ft	Vis m
-	CIRC NDB	7430	2910	2400	7430	2910	3600
-	CIRC VOR	7530	3010	2400	7530	3010	3600
35	All procs (1)	5650	1130	2400	5650	1130	3600

Notes:

(1) N/A between 020° and 130° clockwise.

TAKE-OFF		C		D	
Runway	Facilities	RVR	Vis	RVR	Vis
17/35	RCLL + RCL	-	300	-	300
17/35	REDL + RCL	-	400	-	400
17/35	Nil (Day only)	-	500	-	500

Notes:

JAR-OPS Landing Minima

INTL ZAHEDAN

The following Minima is for Public Transport aircraft and conforms to JAR-OPS1 regulations.

STRAIGHT-IN APPROACH		A				B			
R/W	Procedure	DA/ MDA QNH ft	DH/ MDH QFE ft	Vis m	Vis No ALS m	DA/ MDA QNH ft	DH/ MDH QFE ft	Vis m	Vis No ALS m
35	ILS/DME (M/App 4.1%) (1)	4760	240	600	1000	4760	240	600	1000
35	LOC/DME (M/App 4.1%) (1)	5180	660	1200	1500	5180	660	1400	1500
35	VOR/DME 1 (M/App 3.3%) (1)	5180	660	1200	1500	5180	660	1400	1500

Notes:

(1) Procedure based on aerodrome elevation.

CIRCLING		A			B		
R/W	Procedure	MDA QNH ft	MDH QFE ft	Vis m	MDA QNH ft	MDH QFE ft	Vis m
	- CIRC NDB	7430	2910	1500	7430	2910	1600
	- CIRC VOR	7530	3010	1500	7530	3010	1600
	35 All procs (1)	5650	1130	1500	5650	1130	1600

Notes:

(1) N/A between 020° and 130° clockwise.

TAKE-OFF		A		B	
Runway	Facilities	RVR	Vis	RVR	Vis
17/35	RCLL + RCL	-	300	-	300
17/35	REDL + RCL	-	400	-	400
17/35	Nil (Day only)	-	500	-	500

Notes: