

Airport information:

Country: Iran

City: TEHRAN

Coordinates: N 35° 25.0', E051 09.1

Elevation: 3307

Customs: Customs: H24

Fuel: Jet A1

RFF: CAT 8

hours: H24

Runways:

Runway 11L

Takeoff length: 4198, Landing length: 4198

Runway 11R

Takeoff length: 3660, Landing length: 3660

Runway 29L

Takeoff length: 3660, Landing length: 3660

Runway 29R

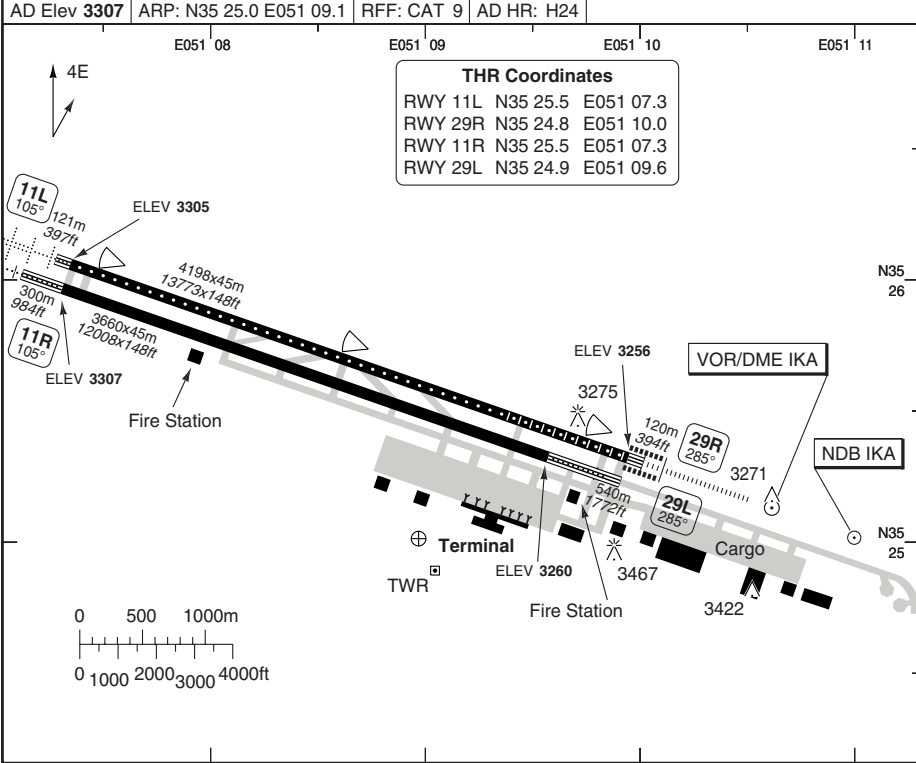
Takeoff length: 4198, Landing length: 4198

AERODROME

Imam Khomainsi INTL TEHRAN

10 - 1

Ika GND 121.6 121.825	TWR 118.7	ATIS 127.2			
AD Elev 3307		ARP: N35 25.0 E051 09.1	RFF: CAT 9	AD HR: H24	



RWY	Slope	TORA m/ft	LDA m/ft	ALS	REDL	RCLL	Additional
11L	-0.4	4198 / 13773	4198 / 13773	H-C	H	30m	P 3° (63)
29R	+0.4	4198 / 13773	4198 / 13773	H-A ③	H	30m	P 3° (63)
11R	-0.4	3660 / 12008	3660 / 12008	L-E ①	L ②	-	P 3.4° (63)
29L	+0.4	3660 / 12008	3660 / 12008	L-E ①	L ②	-	P 3° (63)

① 420m. ② White. ③ Strobe avbl.

STATE		TAKE OFF MINIMA	
RWY	Facilities	RVR A B C D	
All	RCLL + RCL	LVTO	
	REDL + RCL	400 m	
	NIL (day only)	500 m	

© Navtech - oiie01laorg0

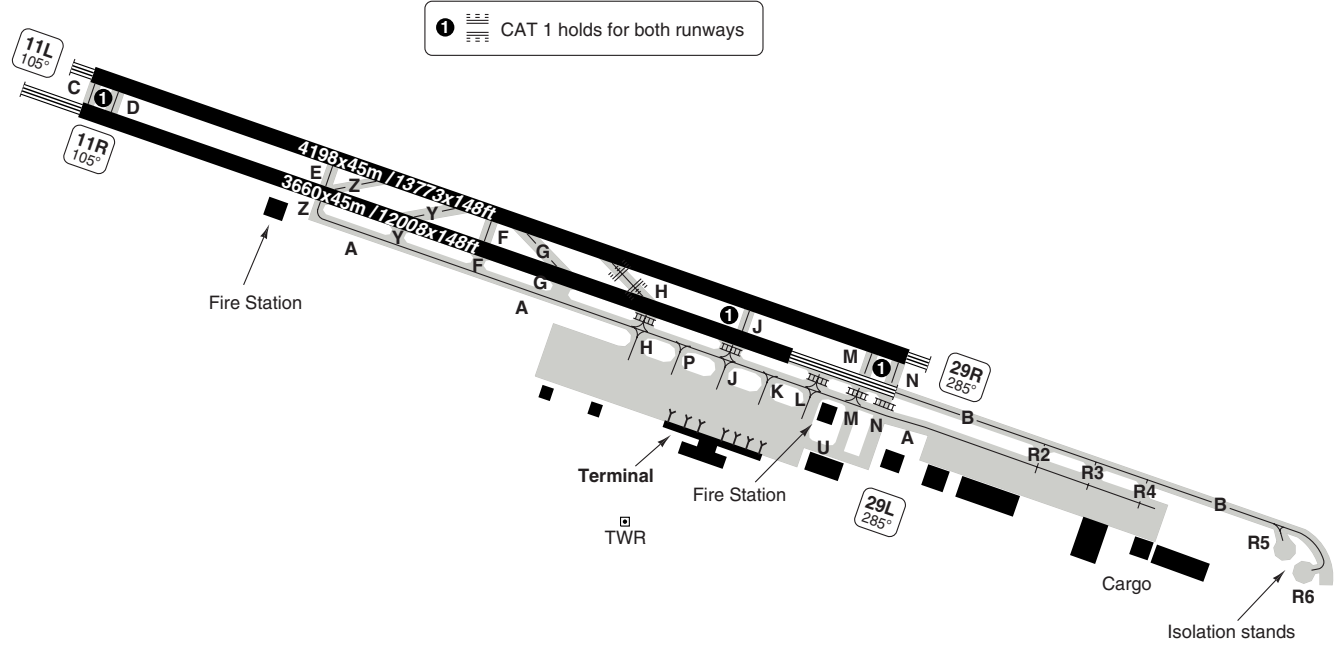
Change: Minima

THIS CHART IS A PART OF NAVIGRAPH NDAC AND IS INTENDED FOR FLIGHT SIMULATION USE ONLY

AERODROME OVERVIEW

Imam Khomeini INTL TEHRAN

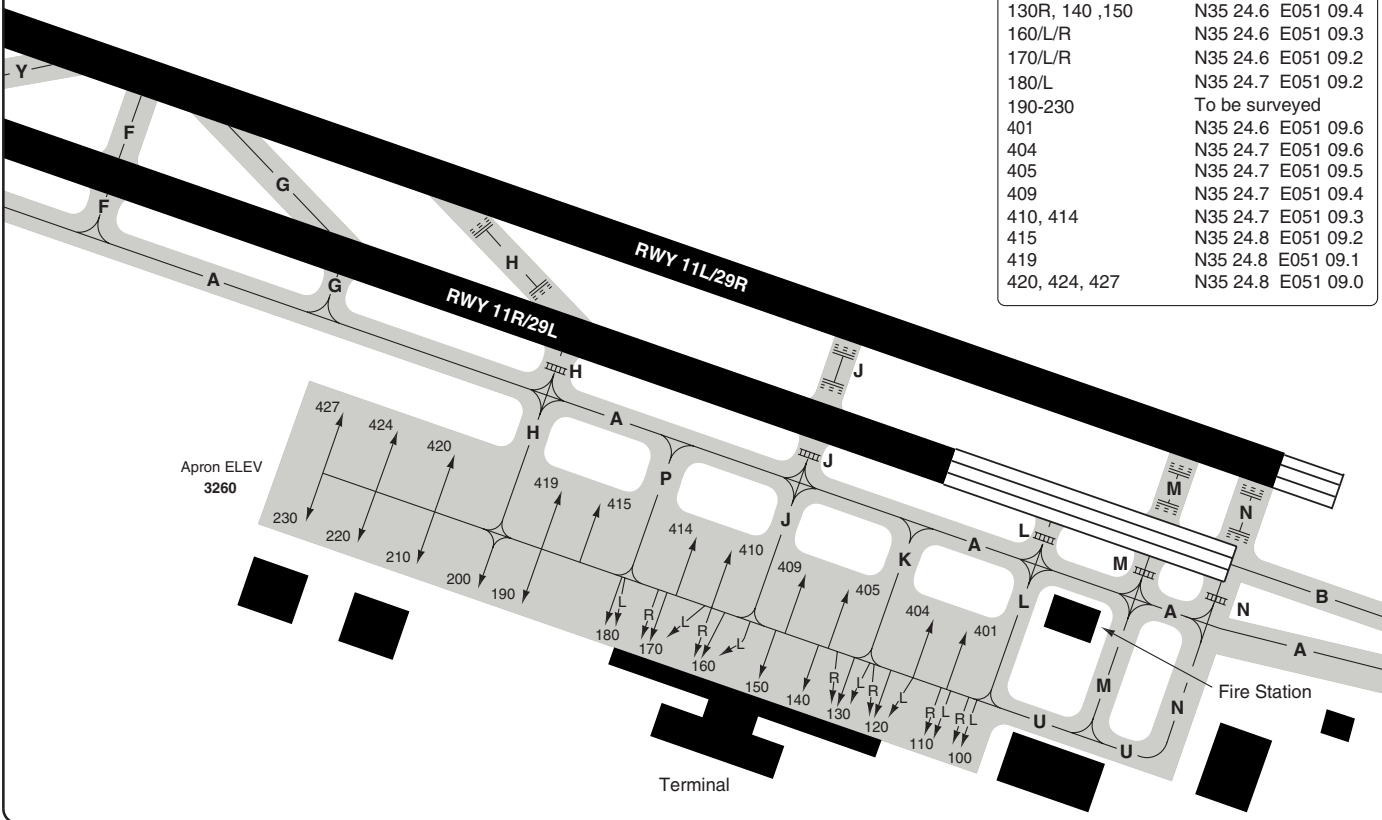
Ika GND	TWR	ATIS
121.6	118.7	127.2
121.825		



© Navtech - oiie03gaorg0

Ika GND	TWR	ATIS
121.6	118.7	127.2
121.825		

Parking position coordinates		
100L/R, 110L	N35 24.5	E051 09.6
110R, 120/L/R, 130L	N35 24.6	E051 09.5
130R, 140, 150	N35 24.6	E051 09.4
160/L/R	N35 24.6	E051 09.3
170/L/R	N35 24.6	E051 09.2
180/L	N35 24.7	E051 09.2
190-230	To be surveyed	
401	N35 24.6	E051 09.6
404	N35 24.7	E051 09.6
405	N35 24.7	E051 09.5
409	N35 24.7	E051 09.4
410, 414	N35 24.7	E051 09.3
415	N35 24.8	E051 09.2
419	N35 24.8	E051 09.1
420, 424, 427	N35 24.8	E051 09.0



THIS CHART IS A PART OF NAVIGRAPH NDAC AND IS INTENDED FOR FLIGHT SIMULATION USE ONLY.
 Change: Apron extension, new stands.

GROUND Parking Passenger Apron
 10 - 3 | 23 MAR 11
 Imam Khomani INTL TEHRAN
 Iran - OIIE / IKA

10 - 4 | 23 MAR 11

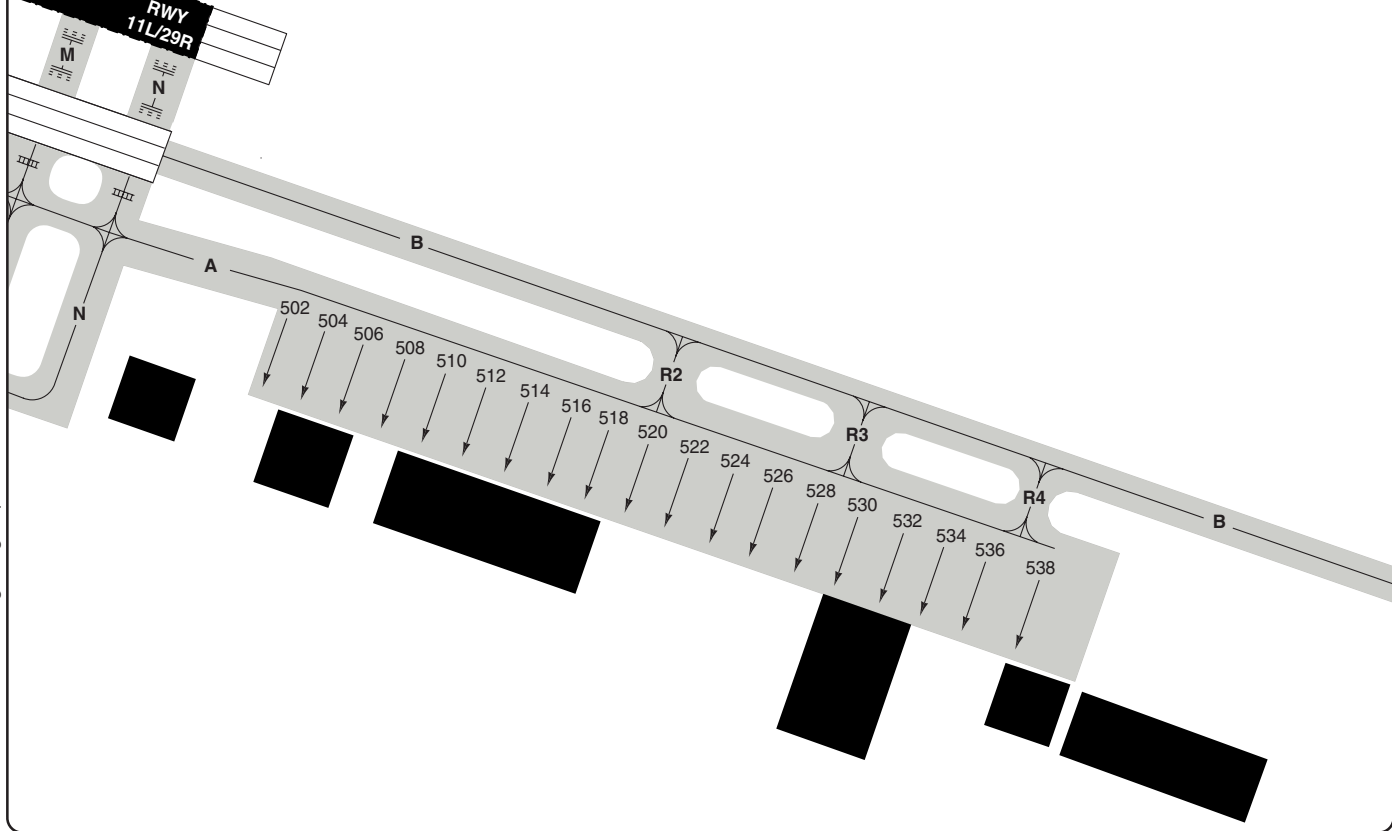
Iran - OIII / IKA

GROUND Parking Cargo Apron

Imam Khomeini INTL TEHRAN

10 - 4

Ika GND	TWR	ATIS
121.6	118.7	127.2
121.825		



© Navtech - oiii04gaorg0

Change: New chart.

THIS CHART IS A PART OF NAVIGHAPH NDAC AND IS INTENDED FOR FLIGHT SIMULATION USE ONLY

GENERAL

Imam Khomainsi INTL TEHRAN

GENERAL

1. WARNING

1.1 Exercise caution due to birds and dogs on the movement area.

1.2 Windshear exists on final Runway 11L/R and 29L/R.

2. SPEED

MAX 220kt at or below FL140 within D25 IKA.

3. TRAFFIC NOTE

Circuit ALT **5000**

Helicopter Circuit Alt **4000**

4. RUNWAY RESTRICTION

Runway 11R/29L available for take-off and landing when:

- Runway 11L/29R not available.
- no aircraft ops on Taxiway A
- no parked aircraft in the north part of Cargo Apron.

When Runway 11L/29R is available, Runway 11R/29L is usable only as taxiway.

5. TAXIWAY RESTRICTION

Taxiway R2 and R6 CLL only.

6. TAXI

6.1 Stands 120-180 are equipped with SAFEDOCK System.

6.2 Start-up

Request start-up 5-10min before start-up. Start-up clearance valid for 10min. Request taxi within validity time.

NOTE:

If unable to depart after having received start-up clearance twice, a new FPL must be submitted.

7. LOW VISIBILITY PROCEDURE

7.1 Follow-me service provided to all aircraft.

7.2 When LVP are in force aircraft should be routed on predesignated taxi routes.

7.3 Aircraft proceeding to stands 120-180 should be guided by a " Follow Me" (on request) and DGS and to other stands only by " Follow Me" .

7.4 Standard taxi routes:**7.4.1 Arrival Runway 11**

Route: H or J or N, A

Checkpoints: Intersection Taxiway A & H and Taxiway A & J.

7.4.2 Arrival Runway 29

Route: Z, A or C, B, A

Checkpoints: Intersection Taxiway Z & B.

7.4.3 Departure Runway 11

Route: J, A, Z, B, C

Checkpoints: Intersection Taxiway A & J and Z & B.

7.4.4 Departure Runway 29

Route: J, A, N

Checkpoints: Intersection Taxiway A & J and B & N.

8. NAV RESTRICTION**8.1 Imam Khomainsi VOR/DME**

Unusable beyond D25 IKA:

360°-010° below 11000ft.

010°-030° below 11500ft.

030°-040° below 10000ft.

040°-050° below 9000ft.

050°-060° below 8000ft.

060°-070° below 7000ft.

070°-200° below 6000ft.

200°-230° below 7500ft.

230°-340° below 7000ft.

340°-350° below 9000ft.

350°-360° below 10000ft.

8.2 Tehran VOR/DME U/S:

055°-090° BTN 5-15nm below 10000ft

and

BTN 15-40nm below 15000ft.

095°-110° BTN 10-15nm below 6000ft

BTN 15-20nm below 7000ft

BTN 20-25nm below 7500ft

and

BTN 25-40nm below 11000ft.

180°-250° BTN 30-40 below 7000ft.

250°-280° BTN 35-40nm below 7500ft.

285°-300° BTN 15-40nm below 14000ft.

300°-050° BTN 5-10nm below 10000ft.

300°-340° BTN 10-25nm below 15000ft

and

BTN 25-40nm below 23000ft.

345°-050° BTN 10-25nm below 16000ft

and

BTN 25-40nm below 28000ft.

GENERAL

Imam Khomeini INTL TEHRAN

10 - 6

- 8.3 Dehnamak VOR/DME
 Unusable at and beyond D40 DAN:
 360°-060° below 20000ft.
 050°-080° below 11000ft.
 080°-180° below 8000ft.
 180°-250° below 7000ft.
 250°-290° below 12000ft.
 290°-320° below 18000ft.
 310°-360° below 20000ft.

9. DE-ICING

Anti-icing and de-icing area located at Taxiway U.

10. MINIMUM RUNWAY OCCUPANCY TIME**10.1 Arrivals**

Pilots shall exit the runway as soon as possible without affecting safety and standard operation.

10.2 Departures

Pilots shall taxi on to the runway as soon as possible after the preceding departing aircraft has begun the take-off roll or arriving aircraft has passed their holding point. Aircraft should initiate take-off as soon as clearance is issued.

Pilots unable to comply should notify ATC as soon as possible, when in contact with Ika tower. Aircraft not ready to commence take-off immediately once cleared will have clearance cancelled and will be instructed to vacate the runway at first available taxiway.

Ika GND 121.6 121.825	TWR 118.7	Mehrabad APP/RAD 119.7 124.45 125.1	ATIS 127.2
-----------------------------	--------------	---	---------------



TA 9000 AD Elev 3307

Kahrizak
358 KAZ
N35 31.0
E051 22.0

Imam Khomeini
D114.3 IKA
N35 24.6
E051 10.7

Rudeshur
116.95 RUS
N35 26.7
E050 54.3

C14
Tehran
(Ghale Morghi)
5000
HJ

KAHRIZAK 2C
KAZ 2C

076°

KAHRIZAK 1D
KAZ 1D

R59
Tehran
(Nasr)
FL200

DEHNAMEK 1L
DHN 1L

100°

DEHNAMEK 1M
DHN 1M

093°

DEHNAMEK 1J
DHN 1J

092°

C15
Tehran
(Ghale Morghi)
8000
HJ

Varamin
373 VR

N35 20.6
E051 38.2

0 5 10nm

ALT RESTRICTION: Climb to cleared level

SID	RWY	MNM Climb	Routeing
DEHNAMEK 1J	29 L/R	4.4% for AWY R794	Turn left - 092° to VR - VR - 092° from VR/R272 DHN-DHN
DEHNAMEK 1L	11 L/R	4.3% for AWY R794	Turn left - R052 IKA - KAZ - turn right - 100° - DHN
DEHNAMEK 1M	11 L/R	4.4% for AWY R794	Turn left - R093 IKA - DHN
KAHRIZAK 2C	29 L/R	-	Turn right - 076° to KAZ / R075 RUS - KAZ
KAHRIZAK 1D	11 L/R	-	Turn left - R052 IKA - KAZ

- ① MSA 65 within 15nm
- ② MSA 65 within 10nm



SID DEHNAMEK, KAHRIZAK

30 - 1 | 09 FEB 11

Imam Khomeini INTL TEHRAN

Iran - OIII / IKA

SID RADAL

Imam Khomeini INTL TEHRAN

Ika GND	TWR	Mehrabad APP/RAD	ATIS
121.6	118.7	119.7 124.45	127.2
121.825		125.1	

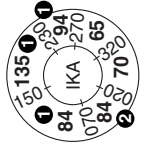
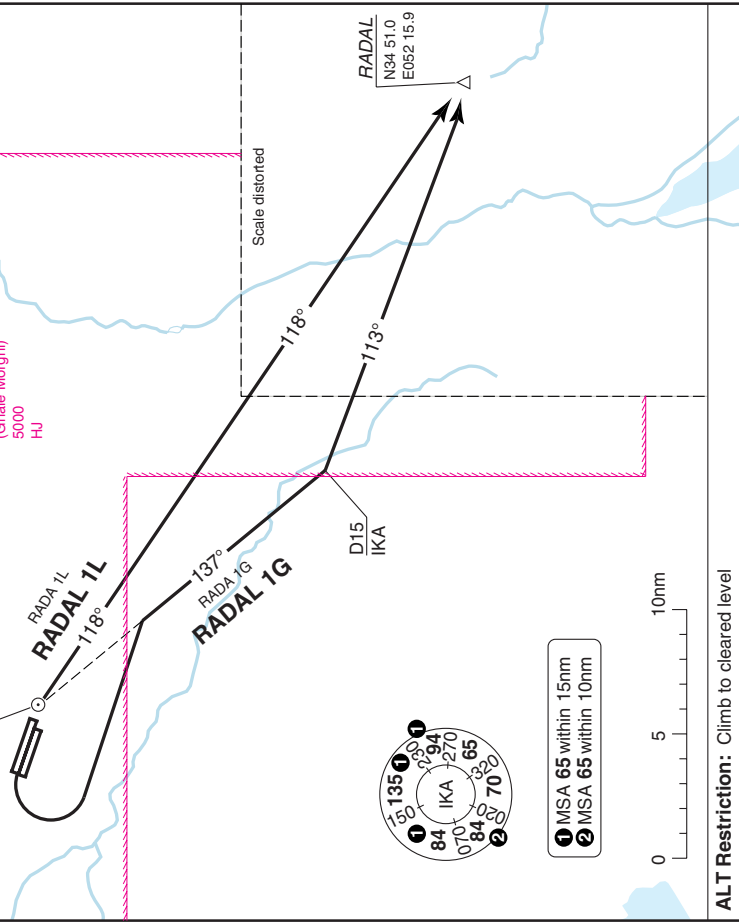
TA 9000 AD Elev 3307

Tehran/Mehrabad



Imam Khomeini
D114.3 IKA
N35 24.6
E051 10.7

C14
Tehran
(Ghaie Morghi)
5000
HU



- ① MSA 65 within 15nm
- ② MSA 65 within 10nm

ALT Restriction: Climb to cleared level

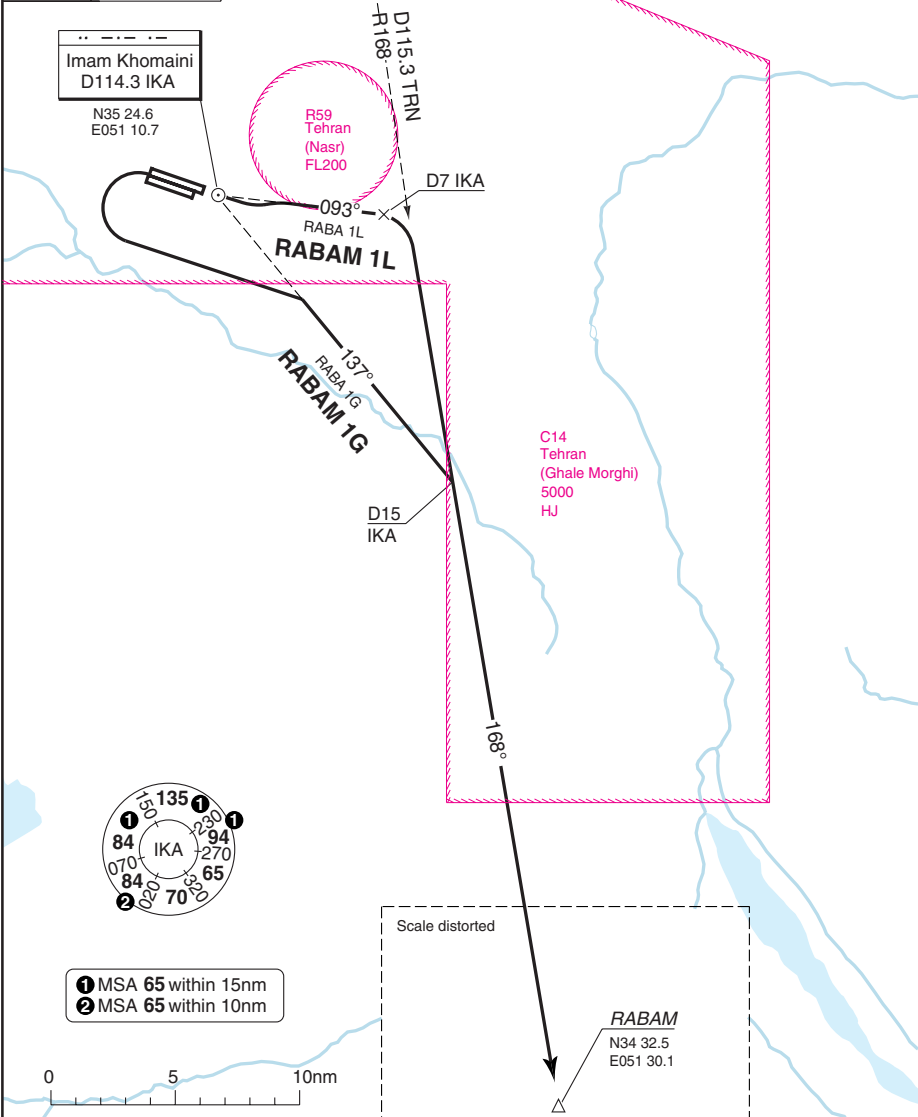
SID	RWY	Routeing
RADAL 1G	29 L/R	Turn left - R137 IKA - at D15 IKA turn left - 113° - RADAL
RADAL 1L	11 L/R	Turn right - R118 IKA - RADAL

SID RABAM

Imam Khomainsi INTL TEHRAN

Ika GND 121.6 121.825	TWR 118.7	Mehrabad APP/RAD 119.7 124.45 125.1	ATIS 127.2
-----------------------------	--------------	---	---------------

TA 9000 AD Elev 3307



MNM CLIMB GRADIENT: 3.8%

ALT Restriction: Climb to the cleared level

SID	RWY	Routeing
RABAM 1G	29 L/R	Turn left - R137 IKA - at D15 IKA turn right - R168 TRN - RABAM
RABAM 1L	11 L/R	Turn left - R093 IKA - at D7 IKA turn right - R168 TRN - RABAM

© Navitech - oiie03daorg0

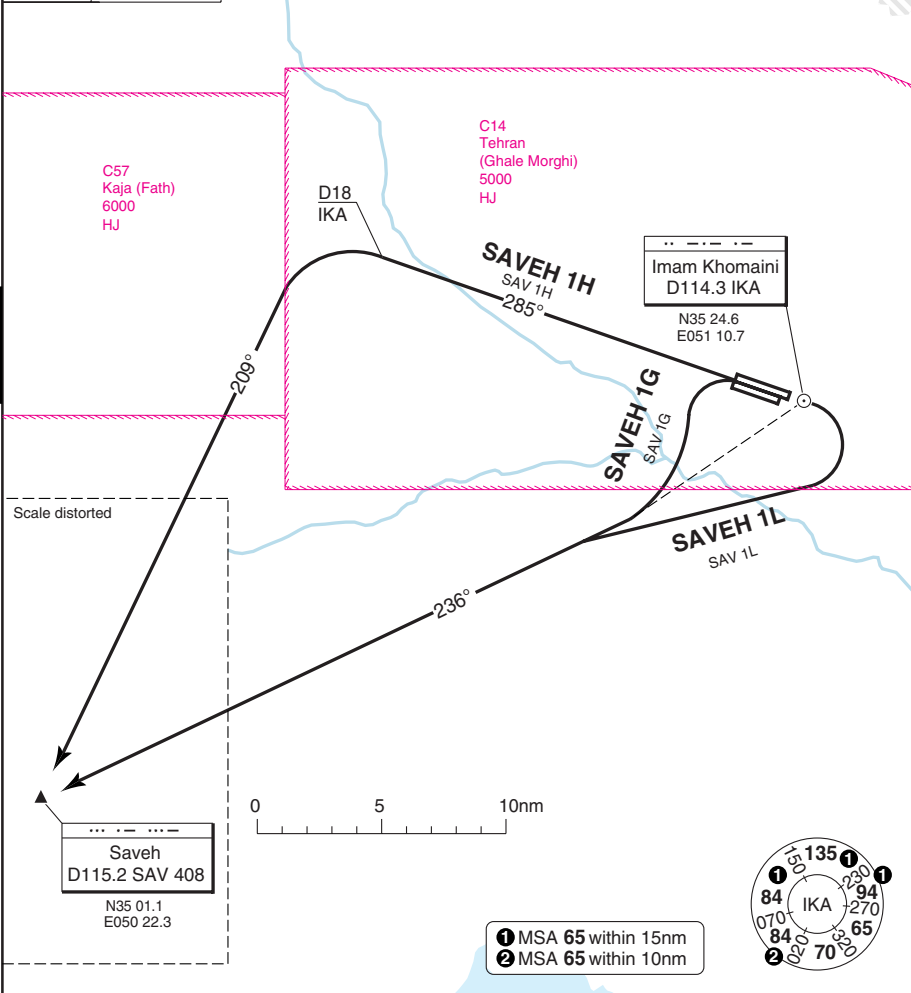
Change: New print.

SID SAVEH

Imam Khomainsi INTL TEHRAN

Ika GND 121.6 121.825	TWR 118.7	Mehrabad APP/RAD 119.7 124.45 125.1	ATIS 127.2
-----------------------------	--------------	---	---------------

TA 9000 AD Elev 3307



ALT Restriction: Climb to cleared level

SID	RWY	MNM Climb Gradient	Routeing
SAVEH 1G	29 L/R	4.9% to SAV	Turn left - R236 IKA - SAV
SAVEH 1H	29 L/R	4.1% to SAV	Turn left R285 IKA - at D18 IKA turn left - 209° to SAV - SAV
SAVEH 1L	11 L/R	4.9% to SAV	Turn right - R236 IKA - SAV

30 - 4

© Navitech - oiie04daorg0

Change: New print.

THIS CHART IS A PART OF NAVIGRAPH NDAC AND IS INTENDED FOR FLIGHT SIMULATION USE ONLY

© Navtech - oie05daorg0

Ika GND 121.6 121.825	TWR 118.7	Mehrabad APP/RAD 119.7 124.45 125.1	ATIS 127.2
-----------------------------	--------------	---	---------------

TA 9000 AD Elev 3307

C71
Tehran
7500
HJ

C57
Karaj (Fath)
6000
HJ

C14
Tehran
(Ghale Morghi)
5000
HJ

Scale distorted

PAVET
N35 26.7
E049 53.0

PAVET 1G
PAVE 1G
261°

PAVET 1L
PAVE 1L
268°

D19
IKA

Imam Khomeini
D114.3 IKA
N35 24.6
E051 10.7



ALT Restriction: Climb to cleared level

SID	RWY	Routeing
PAVET 1G	29 L/R	Climb on R285 IKA - at D19 IKA turn left - 261° - PAVET
PAVET 1L	11 L/R	Turn right - R268 IKA - PAVET

- ① MSA 65 within 15nm
- ② MSA 65 within 10nm



SID PAVET

30 - 5 | 09 FEB 11

Imam Khomeini INTL TEHRAN

Iran - OIIIE / IKA

30 - 5

THIS CHART IS A PART OF NAVIGRAPH NDAC AND IS INTENDED FOR FLIGHT SIMULATION USE ONLY

Change: New print

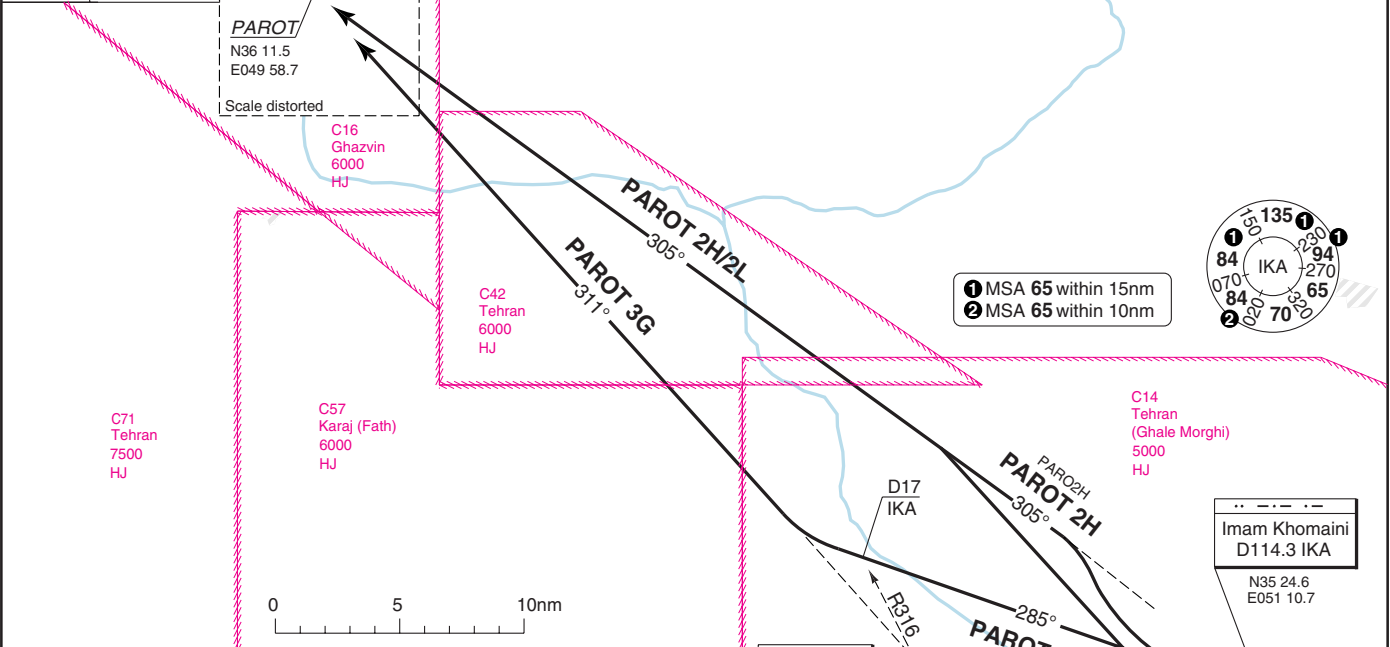
Imam Khomaini INTL TEHRAN

SID PAROT

Ika GND 121.6 121.825	TWR 118.7	Mehrabad APP/RAD 119.7 124.45 125.1	ATIS 127.2
-----------------------------	--------------	---	---------------

TA 9000 AD Elev 3307

PAROT
N36 11.5
E049 58.7
Scale distorted



ALT Restriction: Climb to cleared level		
SID	RWY	Routeing
PAROT 3G	29 L/R	Climb on R285 IKA - at D17 IKA/R316 RUS turn right - R311 RUS - PAROT
PAROT 2H	29 L/R	Turn right - R305 IKA - PAROT
PAROT 2L	11 L/R	Turn right - R305 IKA - PAROT

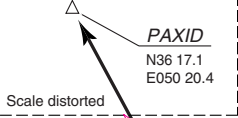


THIS CHART IS A PART OF NAVIGRAPH NDAC AND IS INTENDED FOR FLIGHT SIMULATION USE ONLY

Change: Renumbered; MT

Ika GND 121.6 121.825	TWR 118.7	Mehrabad APP/RAD 119.7 124.45 125.1	ATIS 127.2
-----------------------------	--------------	---	---------------

TA 9000 AD Elev 3307



C42
Tehran
6000



- ① MSA 65 within 15nm
- ② MSA 65 within 10nm

Rudeshur
116.95 RUS

N35 26.7
E050 54.1

C14
Tehran
(Ghale Morghi)
5000
HJ

Imam Khomeini
D114.3 IKA

N35 24.6
E051 10.7

Varamin
373 VR

N30 20.6
E051 38.2

ALT Restriction: Climb to cleared level

SID	RWY	MNM Climb	Routeing
PAXID 2G	29 L/R	3.5%	Turn right - R304 IKA - at D25.5 IKA turn right - R328 RUS - PAXID
PAXID 2L	11 L/R	-	Turn right - R304 IKA - at D25.5 IKA turn right - R328 RUS - PAXID
VARAMIN 1C	29 L/R	-	Turn right - R097 IKA - VR
VARAMIN 1D	11 L/R	-	Turn left - R097 IKA - VR



SID PAXID, VARAMIN

30 - 7 | 21 MAR 12

Imam Khomeini INTL TEHRAN

Iran - OIE / IKA

30 - 8 | 21 MAR 12

IRAN - OIIE / IKA

SID NABAX

Imam Khomeini INTL TEHRAN

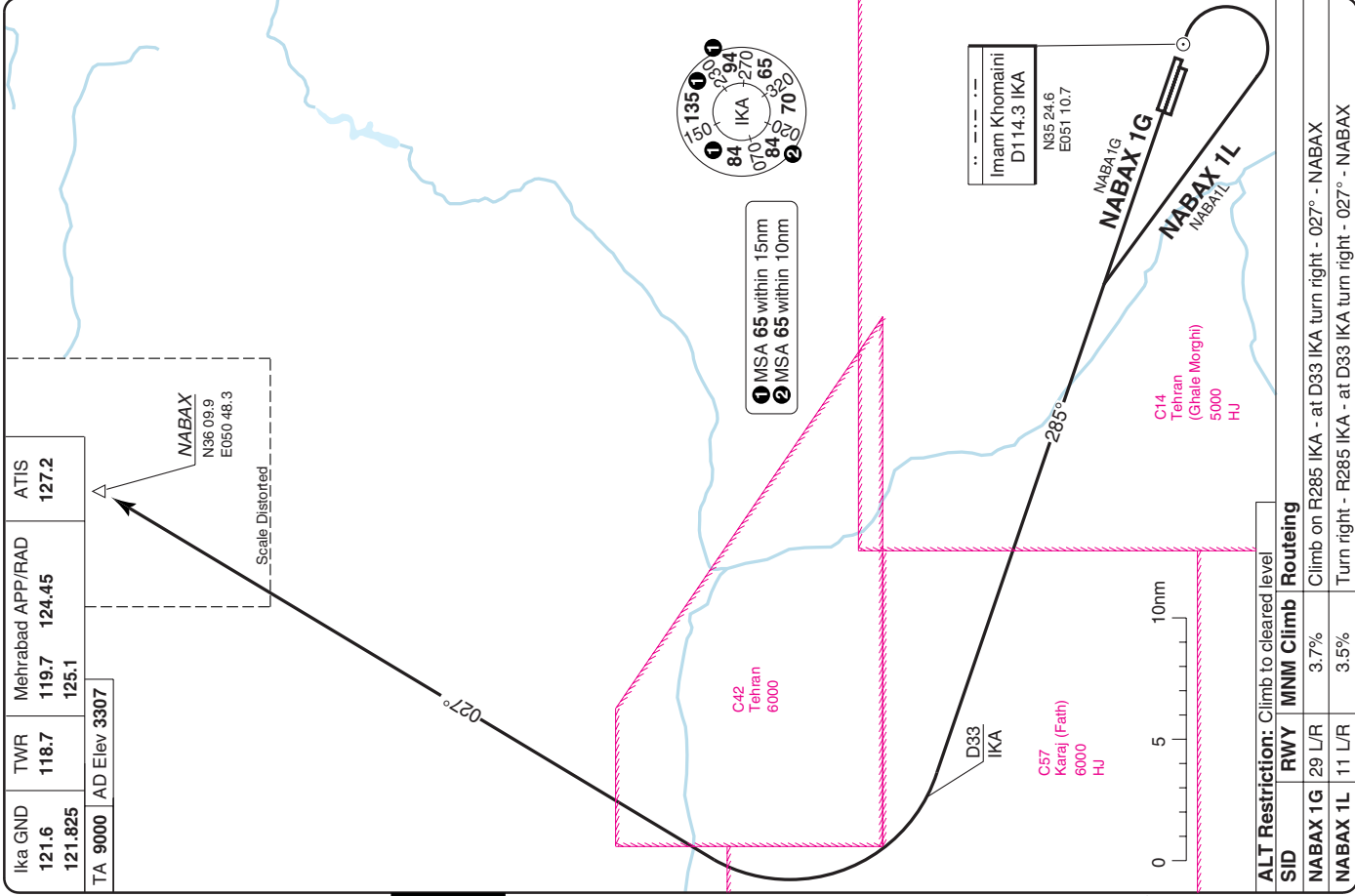
Ika GND	TWR	Mehrabad APP/RAD	ATIS
121.6	118.7	124.45	127.2
121.825	125.1		

TA 9000 AD Elev 3307

NABAX
N36 09.9
E050 48.3

Scale Distorted

30 - 8



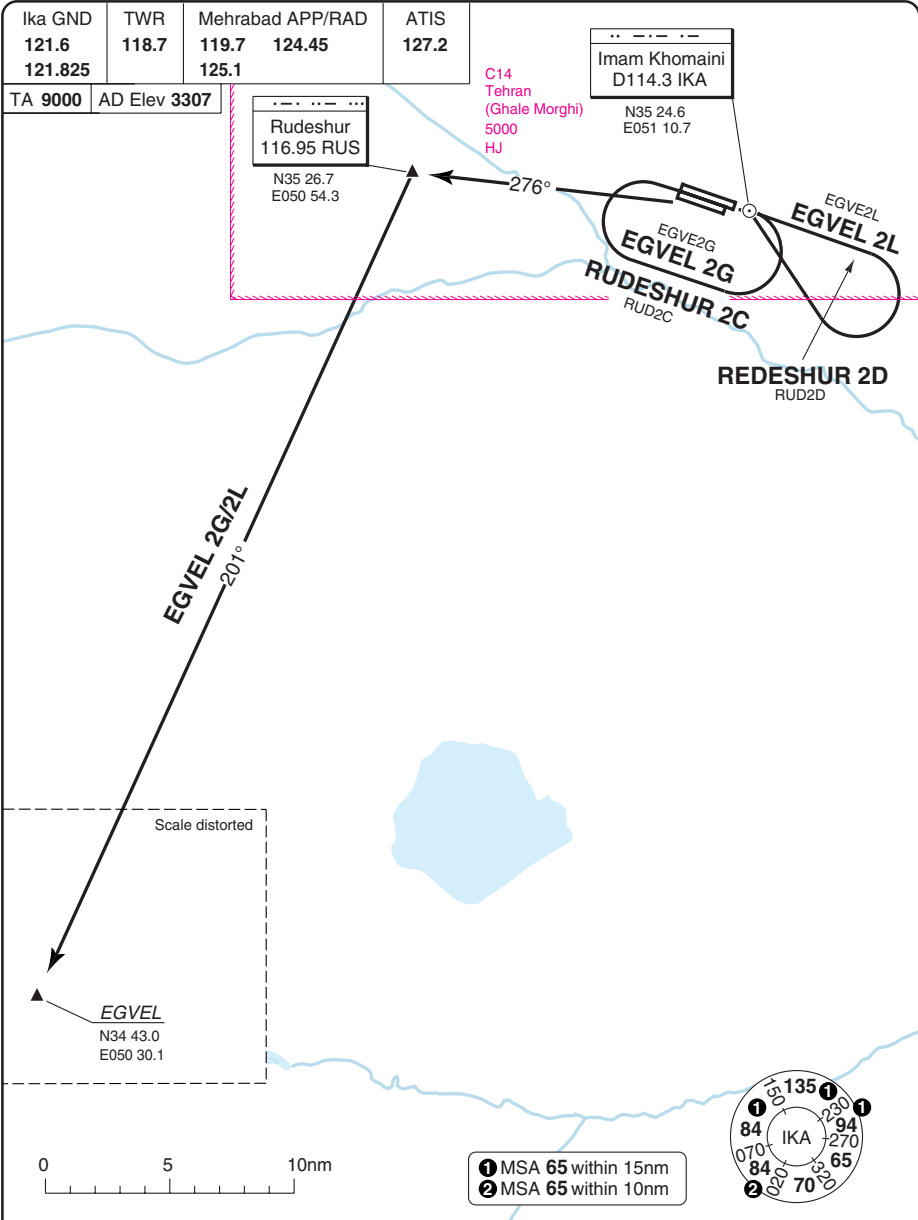
ALT Restriction: Climb to cleared level	
SID	Routeing
NABAX 1G	29 L/R
NABAX 1L	11 L/R
	MMM Climb
	3.7%
	3.5%

Change: Renumbered

THIS CHART IS A PART OF NAVIGRAPH NDAC AND IS INTENDED FOR FLIGHT SIMULATION USE ONLY

SID EGVEL, RUDESHUR

Imam Khomainsi INTL TEHRAN



30 - 9

Reverse side blank

© Navtech - oiie09daorg0

ALT Restriction: Climb to cleared level

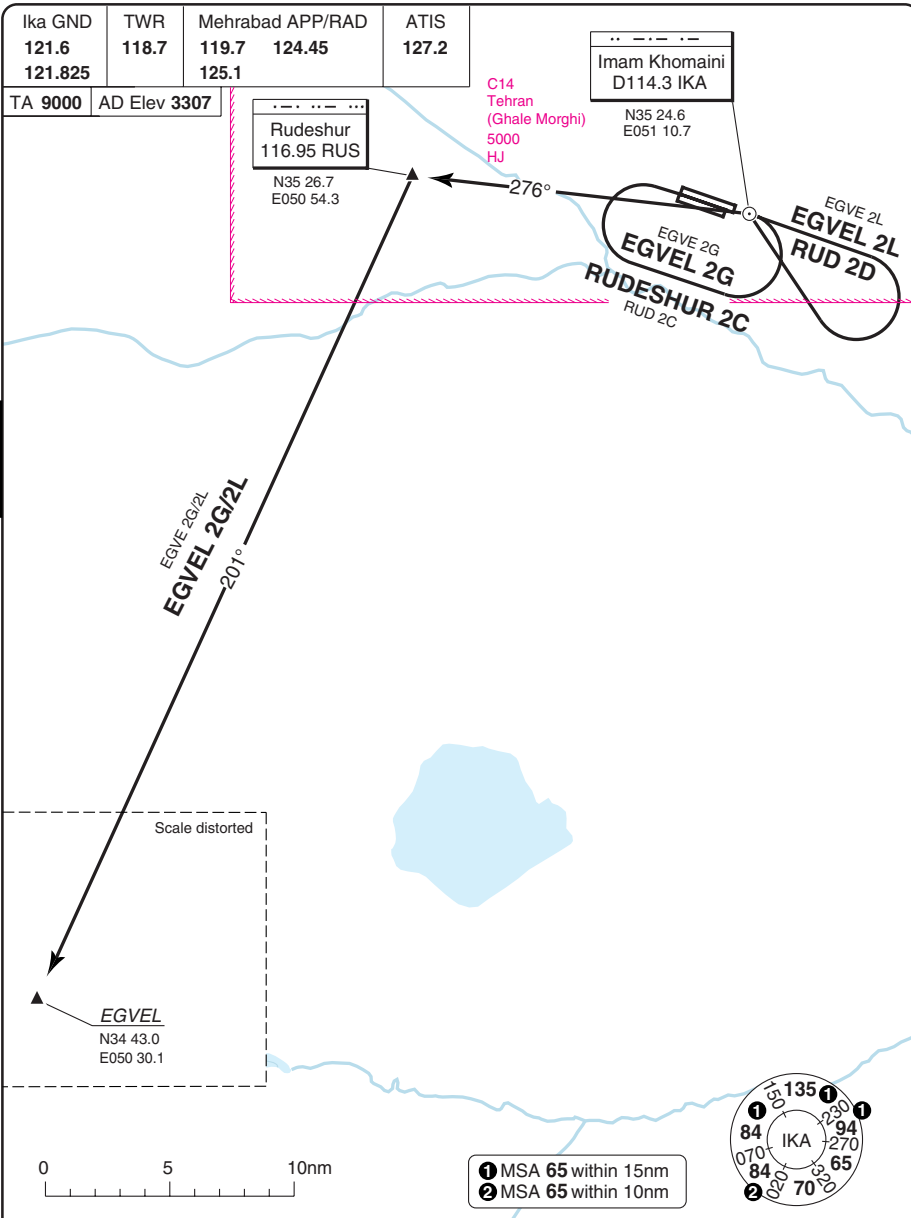
SID	RWY	Routeing
EGVEL 2G	29 L/R	Turn left - IKA - R276 IKA - RUS - R201 RUS - EGVEL
EGVEL 2L	11 L/R	Turn right - IKA - R276 IKA - RUS - R201 RUS - EGVEL
RUDESHUR 2C	29 L/R	Turn left - IKA - R276 IKA - RUS
RUDESHUR 2D	11 L/R	Turn right - IKA - R276 IKA - RUS

Change: Renumbered

THIS CHART IS A PART OF NAVIGRAPH NDAC AND IS INTENDED FOR FLIGHT SIMULATION USE ONLY

SID EGVEL, RUDESHUR

Imam Khomainsi INTL TEHRAN



30 - 10

© Navtech - oiie10daorg0

ALT Restriction: Climb to cleared level

SID	RWY	Routeing
EGVEL 2G	29 L/R	Turn left - IKA - R276 IKA - RUS - R201 RUS - EGVEL
EGVEL 2L	11 L/R	Turn right - IKA - R276 IKA - RUS - R201 RUS - EGVEL
RUDESHUR 2C	29 L/R	Turn left - IKA - R276 IKA - RUS
RUDESHUR 2D	11 L/R	Turn right - IKA - R276 IKA - RUS

Change: New print.

STAR KAHRIZAK, PAXID, RUDESHUR 2E Imam Khomai INTL TEHRAN

Mehrabad APP/RAD	Ika TWR	GND	ATIS
119.7	118.7	121.6	127.2
125.1		121.825	

TL FL110 AD Elev 3307

Actual descent clearance will be as ATC.

SPEED
 MAX 280kt within TMA at or below FL200.
 MAX 220kt at or below FL140 within D25 IKA.

Teheran
 D115.3 TRN

N35 41.8 E051 17.0

Teheran/Mehrabad OIII

Kahrizak
 358 KAZ

N35 31.0 E051 22.0

PAXI1A
 PAXID 1A
 34 108°
 9000

PAXI1B
 PAXID 1B
 19 93°
 9000

RUS2E
 RUDESHUR 2E
 14 095°
 8000

KAZI2E
 KAHRIZAK 1E
 11 230°
 8000

Rudeshur
 116.95 RUS

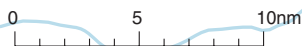
N35 26.7 E050 54.3

C14 Teheran (Ghale Morghi) 5000 HJ

201 IKA

N35 24.5 E051 11.1

- 1 MSA 65 within 15nm
- 2 MSA 65 within 10nm



Change: APP/RAD freq, ALT, HP

THIS CHART IS A PART OF NAVIGRAPH NDAC AND IS INTENDED FOR FLIGHT SIMULATION USE ONLY

Mehrabad APP/RAD 119.7 125.1	Ika TWR 118.7	GND 121.6 121.825	ATIS 127.2
---	-------------------------	--------------------------------	----------------------

TL FL110 | AD Elev 3307

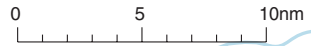
SPEED
MAX 280kt within TMA
at or below FL200.
MAX 220kt at or below FL140
within D25 IKA.

Actual descent clearance
will be as ATC

MNM FL120

Rudeshur
116.95 RUS

N35 26.7
E050 54.3



MNM FL150

Tehran
D115.3 TRN

N35 41.8
E051 17.0

NAGMO
N36 02.2
E051 20.9

Scale distorted

185°
20.6



Tehran/Mehrabad
OIII

R3
Tehran
(Doshan Tappeh)
UNL

NAGMO 1B
227°
24

C14
Tehran
(Ghale Morghi)
5000
HJ

Imam Khomaimi
D114.3 IKA

N35 24.6
E051 10.7

MNM 9000

Varamin
373 VR

N35 20.6
E051 38.2

NAGMO 1A
137°
27

R35
Tehran
UNL

- 1 MSA 65 within 15nm
- 2 MSA 65 within 10nm

C15
Tehran
(Ghale Morghi)
8000
HJ

097°
MAX 220kt
9000
277°



Mehrabad APP/RAD 119.7 125.1	Ika TWR 118.7	GND 121.6 121.825	ATIS 127.2
TL FL110	AD Elev 3307		

SPEED
 MAX 280kt within TMA
 at or below FL200.
 MAX 220kt at or below FL140
 within D25 IKA.

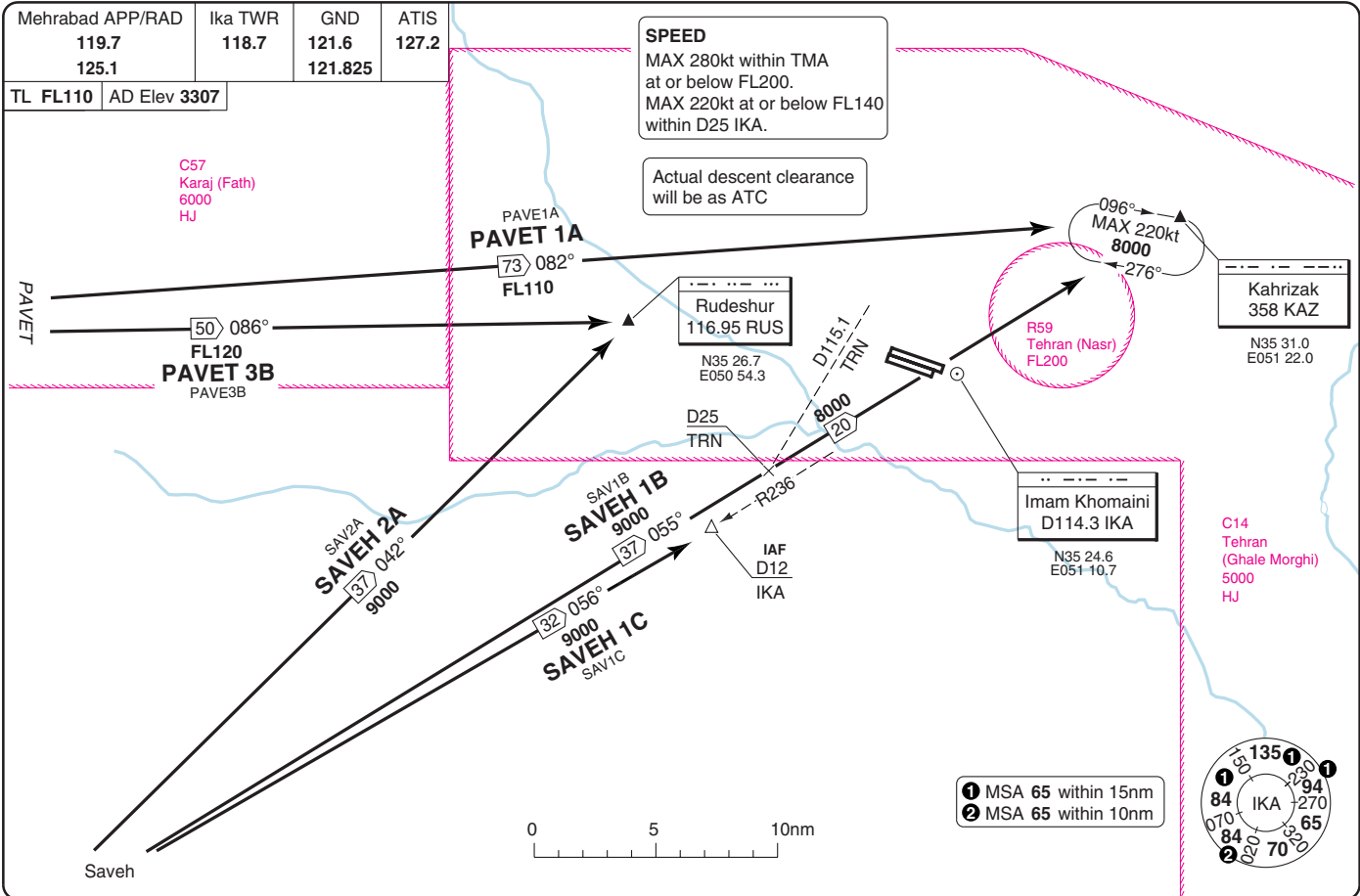
Actual descent clearance
 will be as ATC

C57
 Karaj (Fath)
 6000
 HJ

Kahrizak
 358 KAZ
 N35 31.0
 E051 22.0

Imam Khomainsi
 D114.3 IKA
 N35 24.6
 E051 10.7

C14
 Tehran
 (Ghale Morghi)
 5000
 HJ



STAR PAVET, SAVEH

40 - 5 | 21 MAR 12

Imam Khomainsi INTL TEHRAN

Iran - OIIE / IKA

THIS CHART IS A PART OF NAVIGRAPH NDAC AND IS INTENDED FOR FLIGHT SIMULATION USE ONLY
 Change: APP/RAD freq, ALT, HP

Mehrabad APP/RAD 119.7 125.1	Ika TWR 118.7	GND 121.6 121.825	ATIS 127.2
------------------------------------	------------------	-------------------------	---------------

TL FL110 | AD Elev 3307

C14
Tehran
(Ghale Morghi)
5000
HJ

SPEED
MAX 280kt within TMA
at or below FL200.
MAX 220kt at or below FL140
within D25 IKA.

Actual descent clearance
will be as ATC

Rudeshur
116.95 RUS
N35 26.7
E050 54.3

Imam Khomainsi
D114.3 IKA
N35 24.6
E051 10.7

Kahrizak
358 KAZ
N35 31.0
E051 22.0

096°
MAX 220kt
8000
276°

VR2A
VARAMIN 2A
305° 17
8000

VR3B
VARAMIN 3B
276° 37
9000

097°
MAX 220kt
9000
277°

DHN3A
DEHNAMEK 3A
273° 54
FL110

RADA1B
RADAL 1B
295° 76
9000

Varamin
373 VR
N35 20.6
E051 38.2

DHN1F
DEHNAMEK 1F
264° 67
FL110

RADA1A
RADAL 1A
310° 42
9000



- ① MSA 65 within 15nm
- ② MSA 65 within 10nm



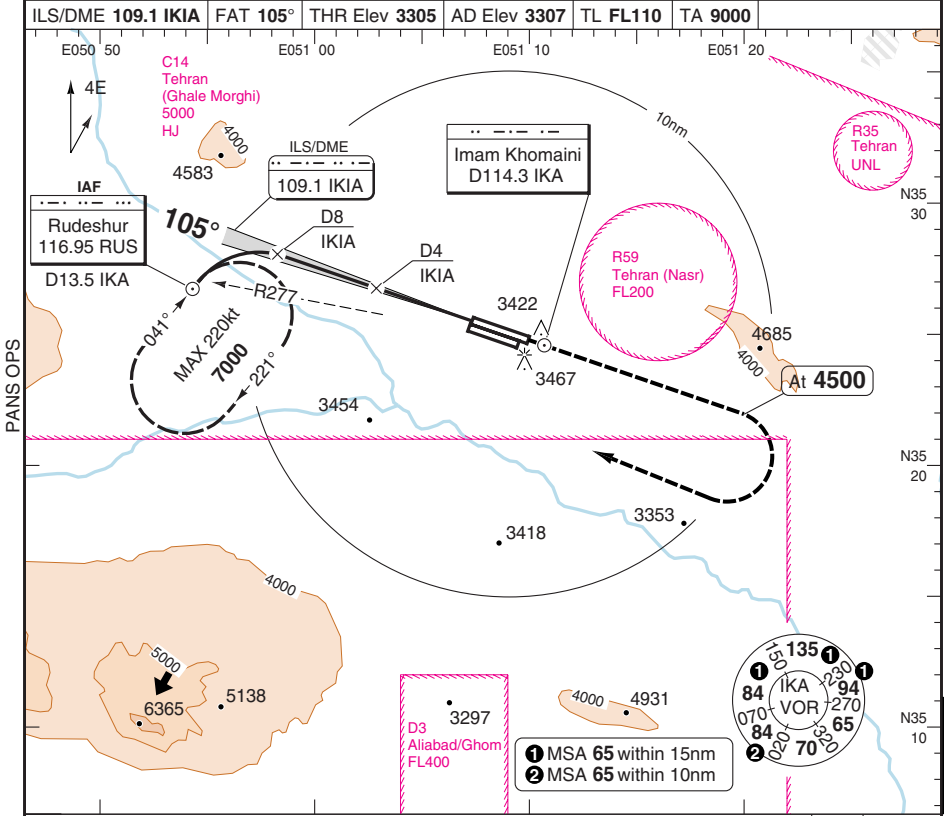
IAF
D15
IKA
140°
MAX 220kt
8000
220°

292° 49
9000
RADAL 1F
RADA1F

ILS RWY 11L VOR/DME ILS 1

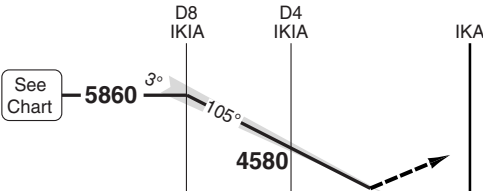
Imam Khomainsi INTL TEHRAN

Mehrabad APP/RAD 119.7 125.1 124.45	Ika TWR 118.7	GND 121.6 121.825	ATIS 127.2
ILS/DME 109.1 IKIA	FAT 105°	THR Elev 3305	AD Elev 3307
		TL FL110	TA 9000



PANS OPS

50 - 1



Climb on 105° to **IKIA**, continue on R105 **IKIA** to **4500**, then right turn to **RUS** HP at **7000**

MAPt D0.7 IKA

nm	14	13	12	11	10	9	8	7	6	5	4	3	2	1	0	TCH 51
ACFT	ILS+DME		LOC+DME		Circling											
A					3750 (443) 1.5km											
B	3530 (221)		3750 (443)		3810 (500) 1.6km											
C	800m		1400m		3910 (600) 2.4km											
D					4010 (703) 3.6km											
GS	80	100	120	140	160											
ROD 3°	420	530	640	740	850											
DME IKIA	8	7	6	5	4	3	2									
3° ALT	5860	5550	5230	4920	4610	4300	3980									
LDA 4198x45	13773x148ft															
P 3° (63)	FALS															

© Navtech - oiie01iaip00

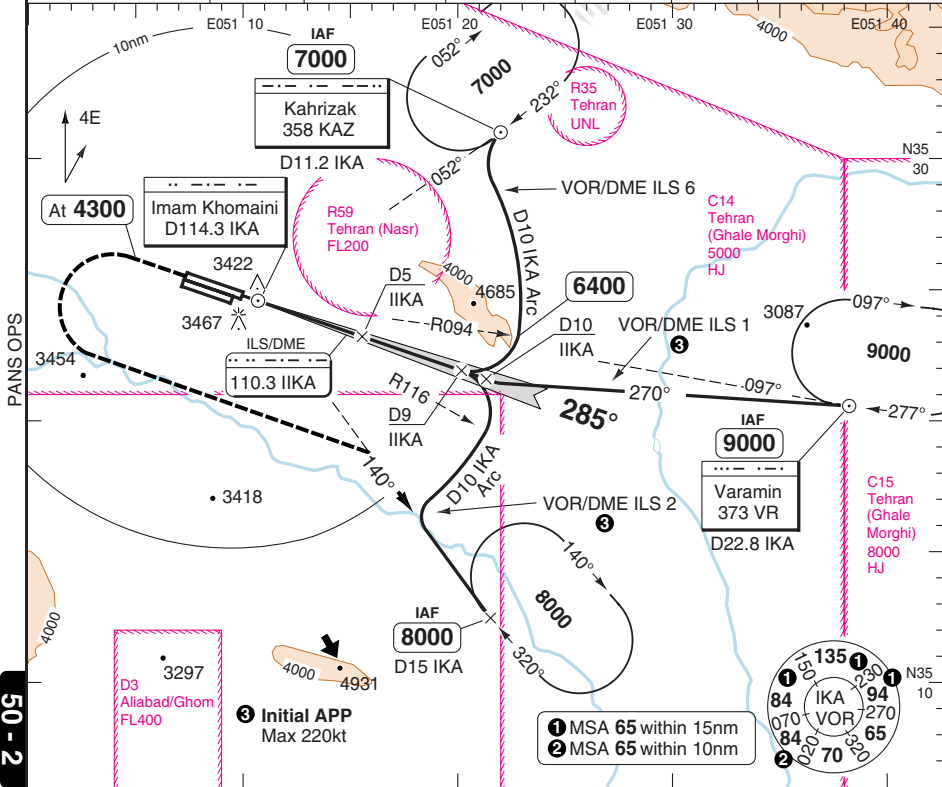
Change: Minima

THIS CHART IS A PART OF NAVIGRAPH NDAC AND IS INTENDED FOR FLIGHT SIMULATION USE ONLY

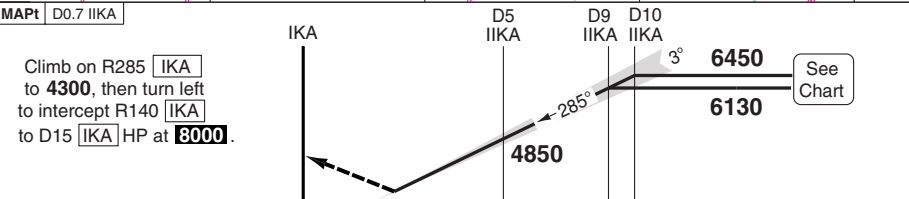
ILS RWY 29R VOR/DME ILS 1, 2, 6

Imam Khomainsi INTL TEHRAN

Mehrabad APP/RAD 119.7 125.1 124.45	Ika TWR 118.7	GND 121.6 121.825	ATIS 127.2
ILS/DME 110.3 IKA	FAT 285°	THR Elev 3256	AD Elev 3307
		TL FL110	TA 9000



50 - 2



TCH 57

ACFT	CAT II 3.3% a	ILS+DME 3.3% a	LOC+DME 3.3% a	Circling	DME IKA ALT	LDA 4198x45 13773x148ft P 3° (63)
A	RA115 350m	3460 (200) 550m	3680 (424) 1300m	3760 (445) 1.5km	8	5820
B	RA131 400m	3460 (203) 550m		3810 (500) 1.6km	7	5510
C	RA147 450m	3470 (213) 550m		3910 (600) 2.4km	6	5200
D	RA162 450m	3480 (223) 550m		4020 (705) 3.6km	5	4890
					4	4570
					3	4260
					2	3950

a MISAP MNM climb gradient.

GS	80	100	120	140	160
ROD 3.0°	420	530	640	740	850

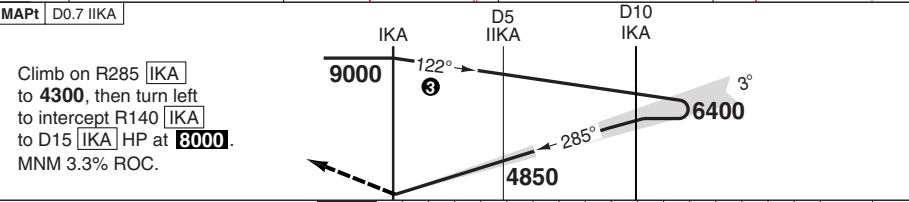
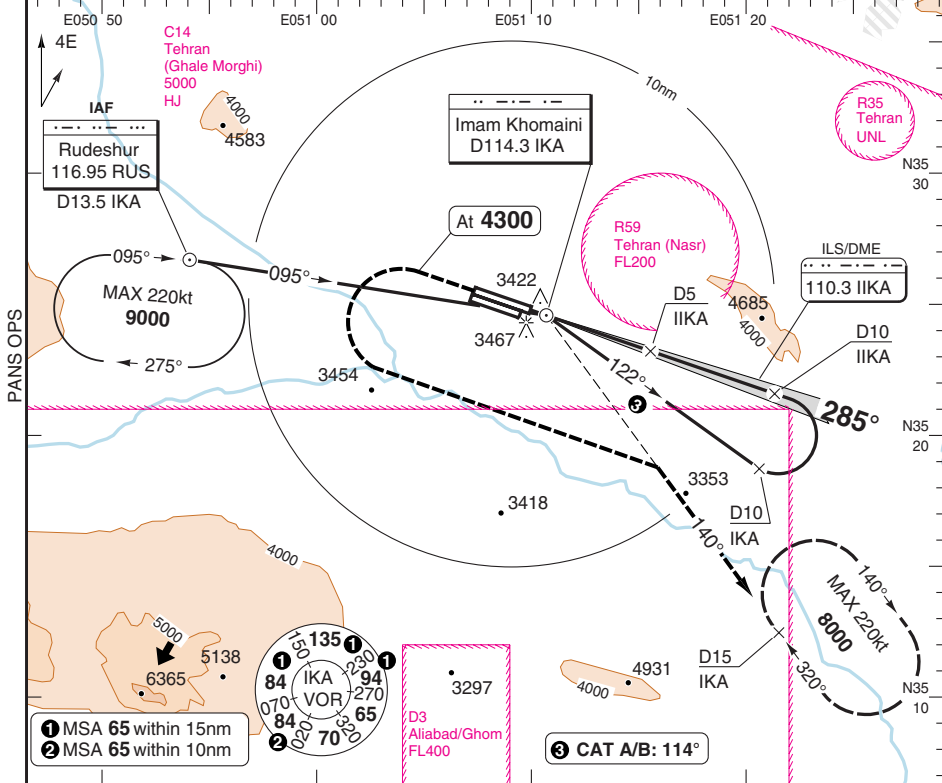
Change: Minima

ILS RWY 29R ILS/DME

Imam Khomainsi INTL TEHRAN

Mehrabad APP/RAD 119.7 125.1 124.45	Ika TWR 118.7	GND 121.6 121.825	ATIS 127.2
---	------------------	-------------------------	---------------

ILS/DME 110.3 IIKA	FAT 285°	THR Elev 3256	AD Elev 3307	TL FL110	TA 9000
--------------------	----------	---------------	--------------	----------	---------



TCH 57

ACFT	CAT II 3.3% a	ILS+DME 3.3% a	LOC+DME 3.3% a	Circling	DME 3.0° IIKA ALT	LDA 4198x45 13773x148ft P 3° (63)
A	RA 115 350m	3460 (200) 550m	3680 (424) 1300m	3760 (445) 1.5km	9 6140	
B	RA 131 400m	3460 (203) 550m		3810 (600) 1.6km	8 5820	
C	RA 147 450m	3470 (213) 550m		3910 (600) 2.4km	7 5510	
D	RA 162 450m	3480 (223) 550m		4020 (705) 3.6km	6 5200	
					5 4890	
					4 4570	
					3 4260	
					2 3950	

a MISAP MNM climb gradient.

GS	80	100	120	140	160
ROD 3.0°	420	540	640	740	850

© Navtech - oiie03iarp00

FALS

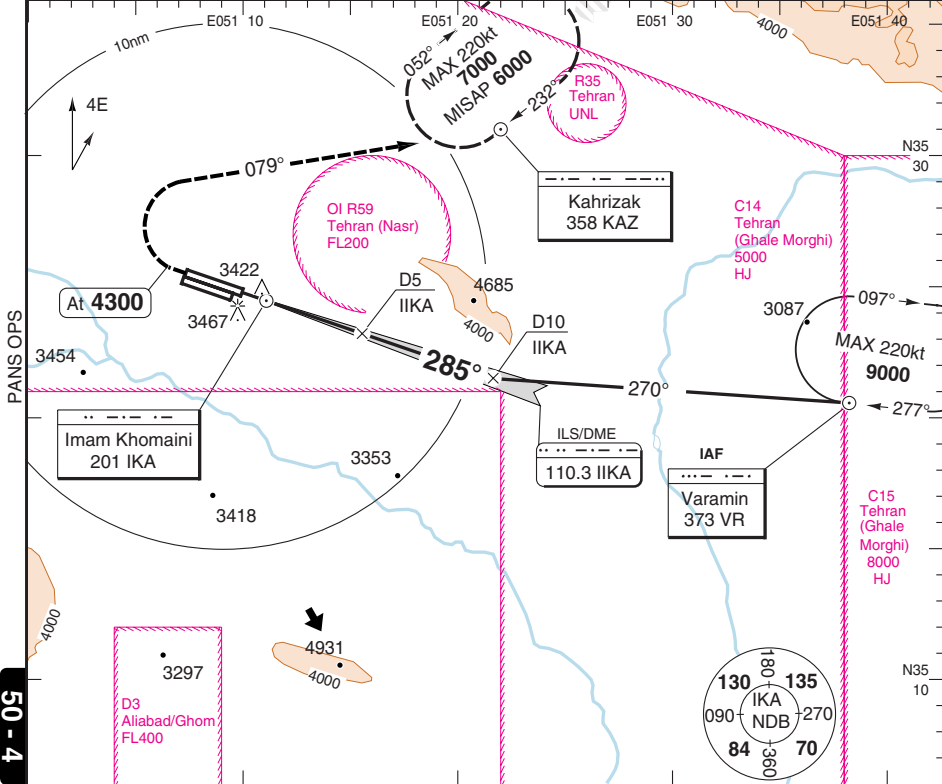
Change: Minima

ILS RWY 29R NDB ILS 1

Imam Khomainsi INTL TEHRAN

Mehrabad APP/RAD 119.7 125.1 124.45	Ika TWR 118.7	GND 121.6 121.825	ATIS 127.2
---	------------------	-------------------------	---------------

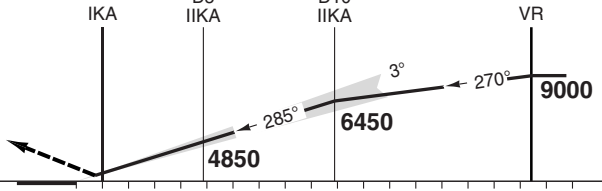
ILS/DME 110.3 IIKA	FAT 285°	THR Elev 3256	AD Elev 3307	TL FL110	TA 9000
--------------------	----------	---------------	--------------	----------	---------



50 - 4

MAPt D0.7 IIKA	IKA	D5 IIKA	D10 IIKA	VR
----------------	-----	---------	----------	----

Climb on 285° to **4300**, then turn right on 079° to **KAZ** HP at **6000**. (MAX 185kt)



TCH 57	0	1	2	3	4	5	6	7	8	9	10	11	12	13	14	15	16	17	18	19	nm
--------	---	---	---	---	---	---	---	---	---	---	----	----	----	----	----	----	----	----	----	----	----

ACFT	CAT II 3.3% ^a	ILS+DME 3.3% ^a	LOC+DME 3.3% ^a	Circling	DME 3.0° IIKA ALT	LDA 4198x45 13773x148ft P 3° (63)
A	RA 115 350m	3460 (200) 550m	3680 (424) 1300m	3760 (445) 1.5km	9 6140	
B	RA 131 400m	3460 (203) 550m		3810 (600) 1.6km	8 5820	
C	RA 147 450m	3470 (213) 550m		3910 (600) 2.4km	7 5510	
D	RA 162 450m	3480 (223) 550m		4020 (705) 3.6km	6 5200	
				5 4890		

^a MISAP MNM climb gradient.

GS	80	100	120	140	160
ROD 3.0°	420	530	640	740	850

FALS

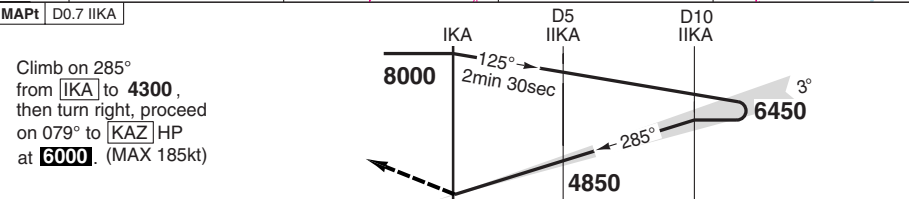
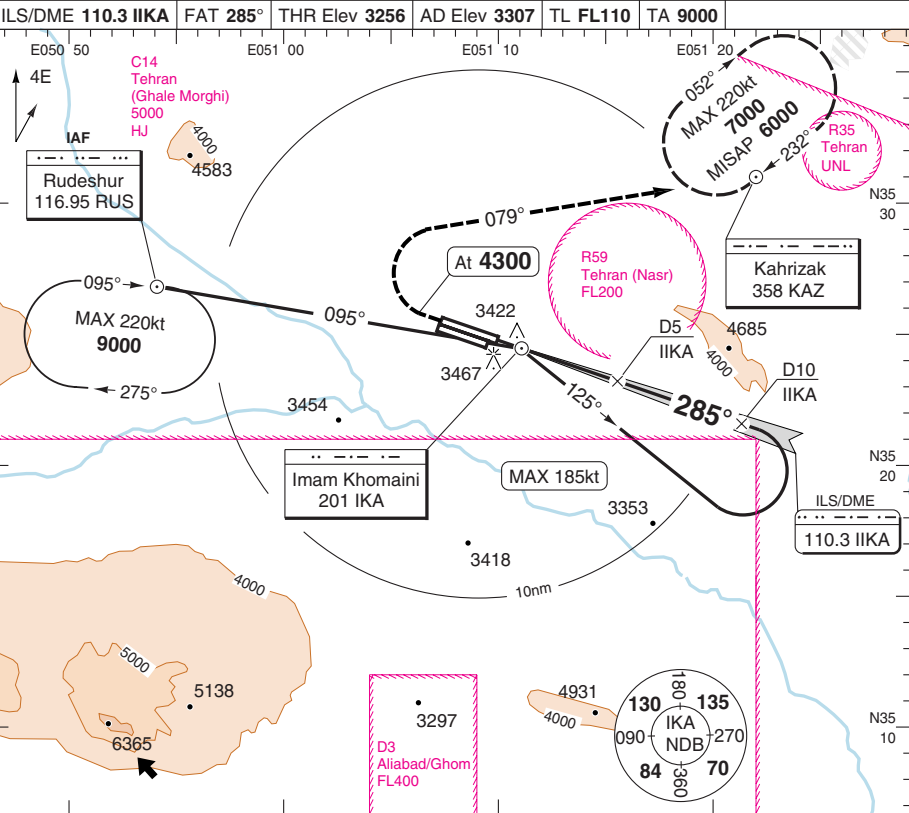
© Navtech - oiie04iaip00

Change: Minima

ILS RWY 29R NDB ILS 2 CAT C/D

Imam Khomainsi INTL TEHRAN

Mehrabad APP/RAD 119.7 125.1 124.45	Ika TWR 118.7	GND 121.6 121.825	ATIS 127.2
ILS/DME 110.3 IIKA		FAT 285°	THR Elev 3256
AD Elev 3307		TL FL110	TA 9000



TCH 57

ACFT	CAT II 3.3% a	ILS+DME 3.3% a	LOC+DME 3.3% a	Circling	DME IIKA	3.0° ALT	LDA 4198x45 13773x148ft P 3° (63)
C	RA 147 450m	3470 (213) 550m	3680 (424) 1300m	3910 (600) 2.4km	9	6140	
D	RA 162 450m	3480 (223) 550m		4020 (705) 3.6km	8	5820	
				7	5510		
				6	5200		
				5	4890		

GS	80	100	120	140	160
ROD 3.0°	420	530	640	740	850

a MISAP MNM climb gradient.

Change: Minima

© Navtech - oiie05iaip00

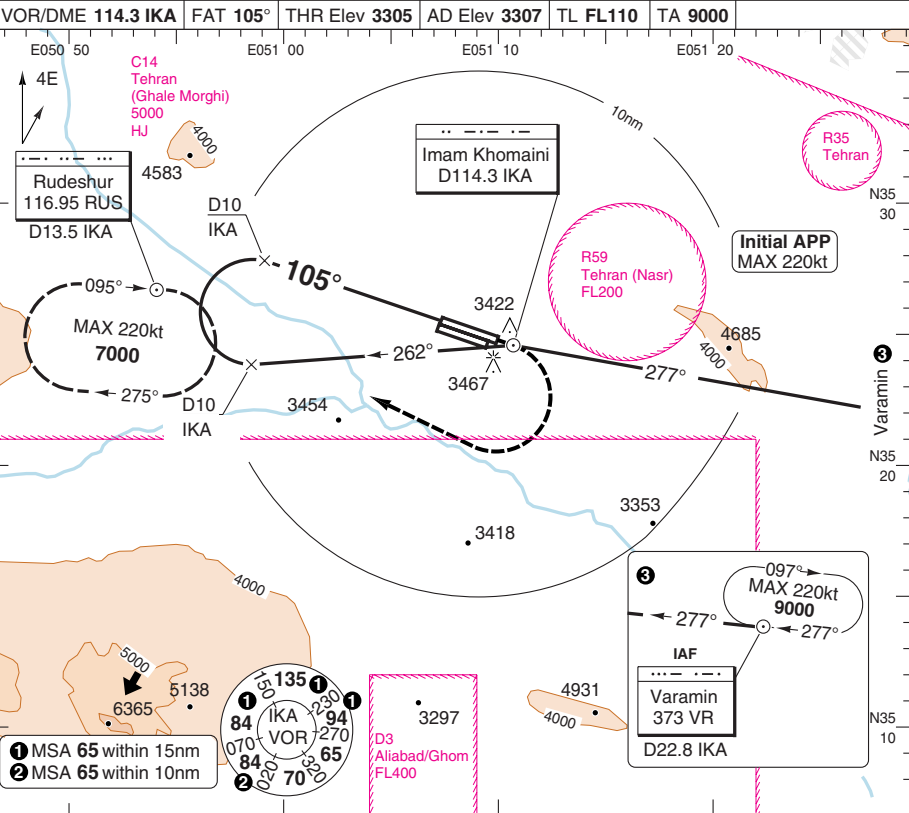
50 - 5

FALS

VOR RWY 11L VOR/DME 6

Imam Khomainsi INTL TEHRAN

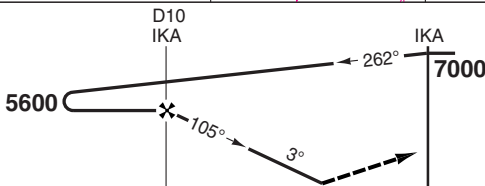
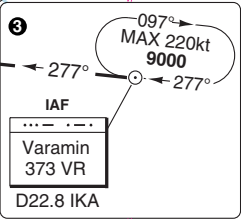
Mehrabad APP/RAD 119.7 125.1 124.45	Ika TWR 118.7	GND 121.6 121.825	ATIS 127.2	
VOR/DME 114.3 IKA	FAT 105°	THR Elev 3305	AD Elev 3307	TL FL110 TA 9000



PANS OPS

50 - 9

- ① MSA 65 within 15nm
- ② MSA 65 within 10nm



Climb on R105 IKA to IKA, then right turn to RUS HP at 7000.

nm 14 13 12 11 10 9 8 7 6 5 4 3 2 1 0

ACFT	VOR+DME	Circling
A		3800 (492) 1.5km
B	3760 (453)	3810 (500) 1.6km
C	1400m	3910 (600) 2.4km
D		4010 (703) 3.6km

DME IKA	3.0° ALT	LDA 4198x45 13773x148ft P 3° (63)
10	5600	
9	5290	
8	4970	
7	4650	
6	4340	
5	4020	

GS	80	100	120	140	160
ROD 3.0°	420	530	640	740	850

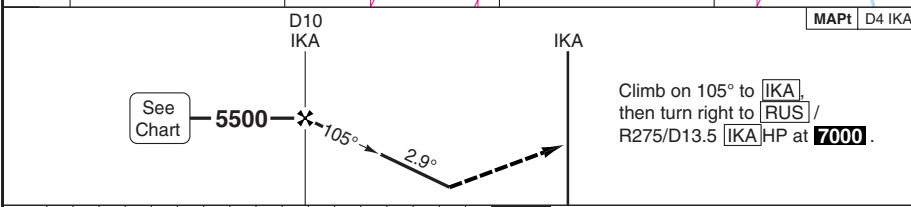
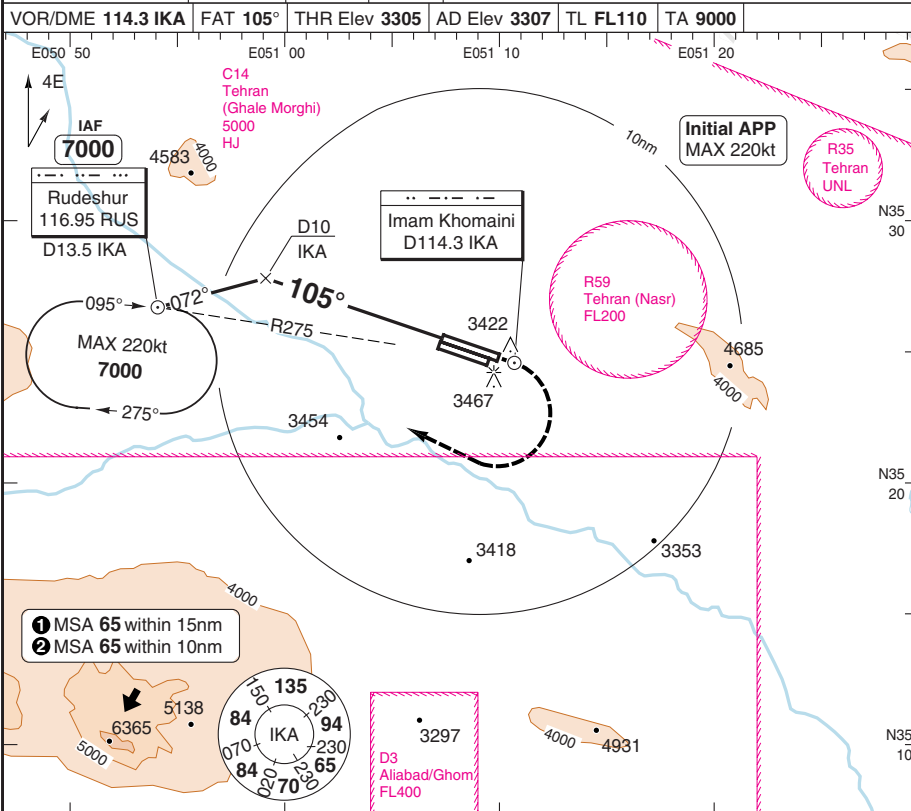
© Navtech - oiie06iaip00 EU OPS

Change: TL, Re-numbered.

VOR RWY 11L VOR/DME 7

Imam Khomainsi INTL TEHRAN

Mehrabad APP/RAD 119.7 125.1 124.45	Ika TWR 118.7	GND 121.6 121.825	ATIS 127.2
VOR/DME 114.3 IKA	FAT 105°	THR Elev 3305	AD Elev 3307
TL FL110	TA 9000		



nm	17	16	15	14	13	12	11	10	9	8	7	6	5	4	3	2	1	0
ACFT	VOR+DME		Circling															
A			3800 (492) 1.5km															
B	3760 (453)		3810 (500) 1.6km															
C	1400m		3910 (600) 2.4km															
D			4010 (703) 3.6km															
GS	80	100	120	140	160													
ROD 2.9°	410	510	610	710	810													
DME IKA	2.9° ALT	LDA 4198x45 13773x148ft P 3° (63)																
10	5500																	
9	5200																	
8	4900																	
7	4600																	
6	4300																	
5	3990	FALS																

© Navtech - oiie07iaip00 EU OPS

50 - 7

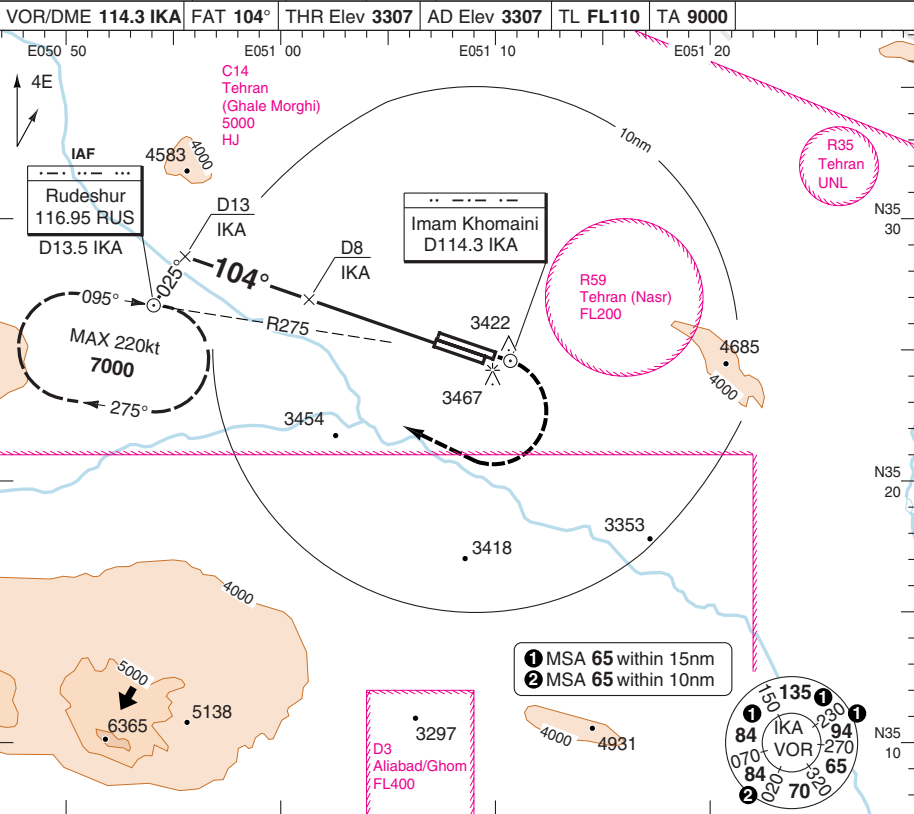
Change: TL, Re-numbered, Chart revised.

THIS CHART IS A PART OF NAVIGRAPH NDAC AND IS INTENDED FOR FLIGHT SIMULATION USE ONLY

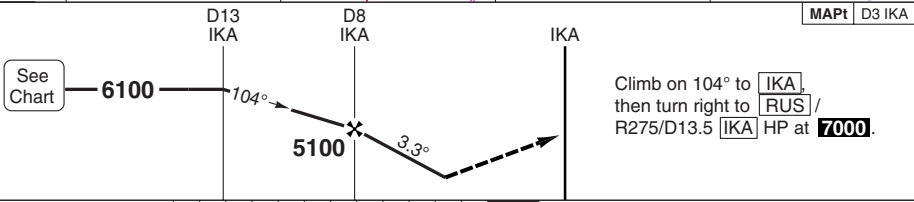
VOR RWY 11R VOR/DME 11 CATC/D

Imam Khomani INTL TEHRAN

Mehrabad APP/RAD 119.7 125.1 124.45	Ika TWR 118.7	GND 121.6 121.825	ATIS 127.2
VOR/DME 114.3 IKA		FAT 104°	THR Elev 3307
AD Elev 3307		TL FL110	TA 9000



50 - 8



ACFT	VOR+DME 3.8% a	Circling a	MISAP MNM climb gradient.	DME IKA	3.3° ALT	LDA 3660x45 12008x148ft P 3.4° (63)
C	3880 (573) 2400m	3910 (600) 2.4km	a	8	5100	
D		4010 (703) 3.6km		7	4760	
GS	80	100	120	140	160	
ROD 3.3°	460	580	690	810	920	

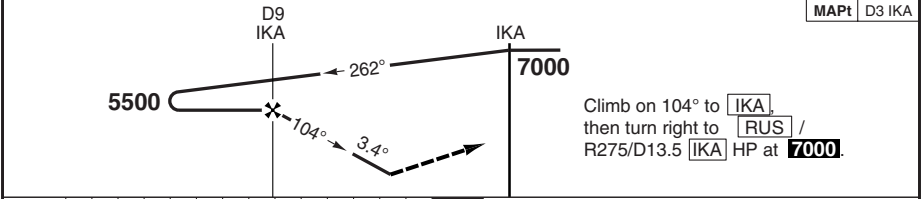
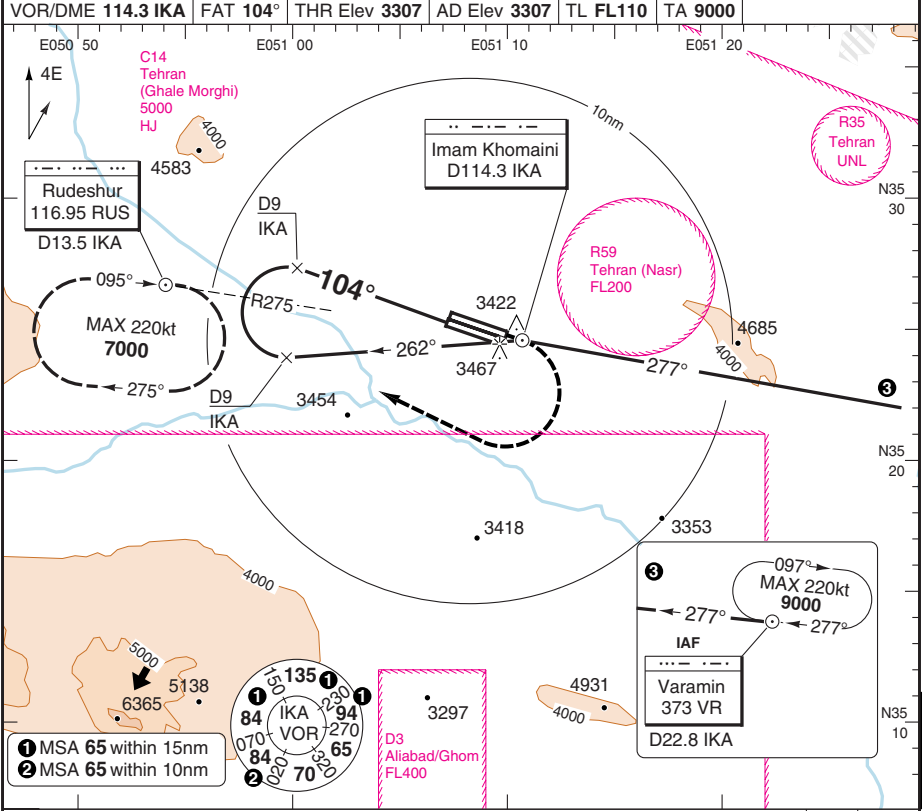
© Navtech - oiie08iarp00 EU OPS

Change: Minima

VOR RWY 11R VOR/DME 12 CAT C/D

Imam Khomainsi INTL TEHRAN

Mehrabad APP/RAD 119.7 125.1 124.45	Ika TWR 118.7	GND 121.6 121.825	ATIS 127.2
VOR/DME 114.3 IKA	FAT 104°	THR Elev 3307	AD Elev 3307
		TL FL110	TA 9000



nm	14	13	12	11	10	9	8	7	6	5	4	3	2	1	0
ACFT	VOR+DME 3.8% a		Circling		a MISAP MNM climb gradient.										
C	3880 (573) 2400m		3910 (600) 2.4km												
D			4010 (703) 3.6km												
GS	80	100	120	140	160										
ROD 3.4°	470	590	710	830	950										
DME IKA	9	8	7	6	5	3.4° ALT	LDA 3660x45 12008x148ft P 3.4° (63)								
						5500	5150	4800	4440	4090	BALS				
											420				

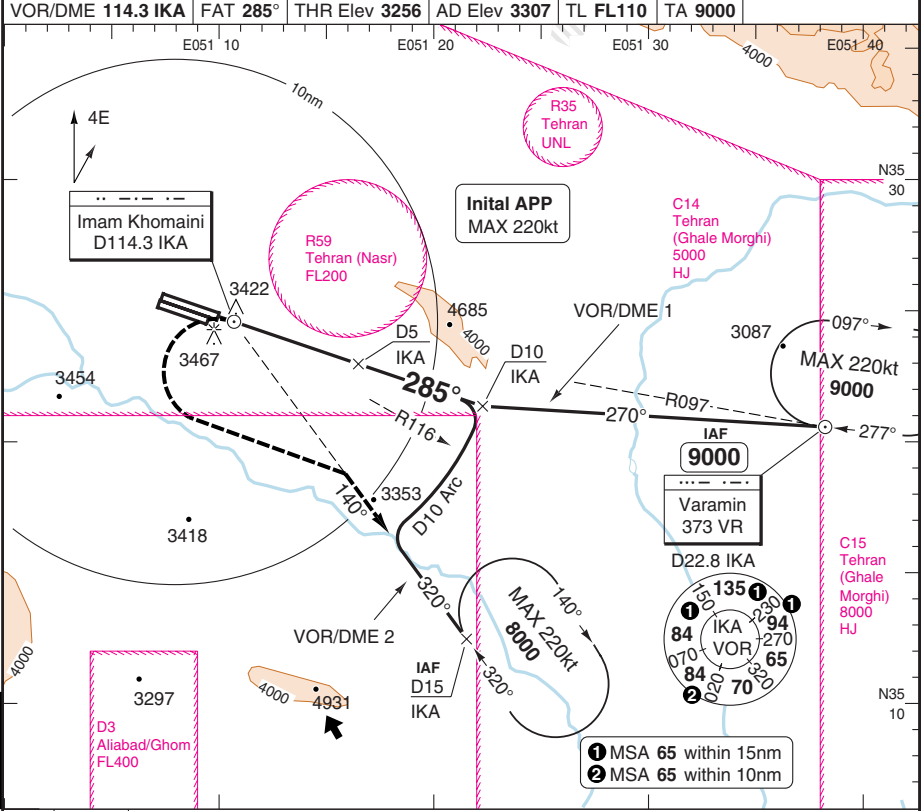
© Navtech - oiie09iaip00

50 - 9

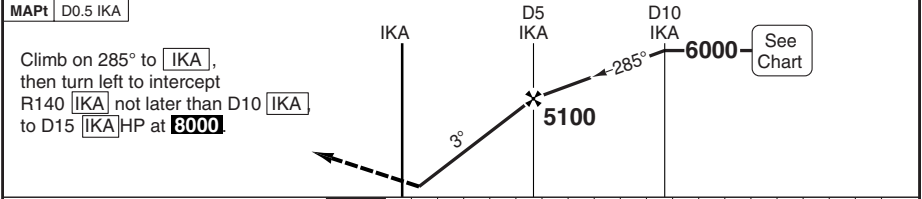
VOR RWY 29R VOR/DME 1, 2

Imam Khomani INTL TEHRAN

Mehrabad APP/RAD 119.7 125.1 124.45	Ika TWR 118.7	GND 121.6 121.825	ATIS 127.2				
VOR/DME 114.3 IKA		FAT 285°	THR Elev 3256	AD Elev 3307	TL FL110	TA 9000	



50 - 12



MAPt D0.5 IKA

Climb on 285° to IKA, then turn left to intercept R140 IKA not later than D10 IKA to D15 IKA HP at 8000.

ACFT	VOR+DME	Circling	DME	3.0° ALT	LDA 4198x45 13773x148ft P 3° (63)
A	3680 (424) 1300m	3760 (445) 1.5km	4	4790	
B		3810 (500) 1.6km	3	4470	
C		3910 (600) 2.4km	2	4150	
D		4020 (705) 3.6km	1	3830	
GS	80	100	120	140	
ROD 3.0°	420	530	640	740	850

© Navtech - oiie12aip00 EU OPS

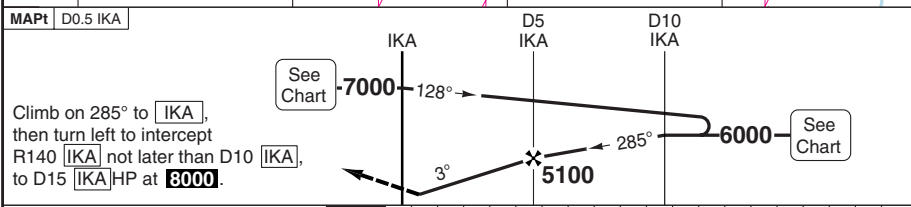
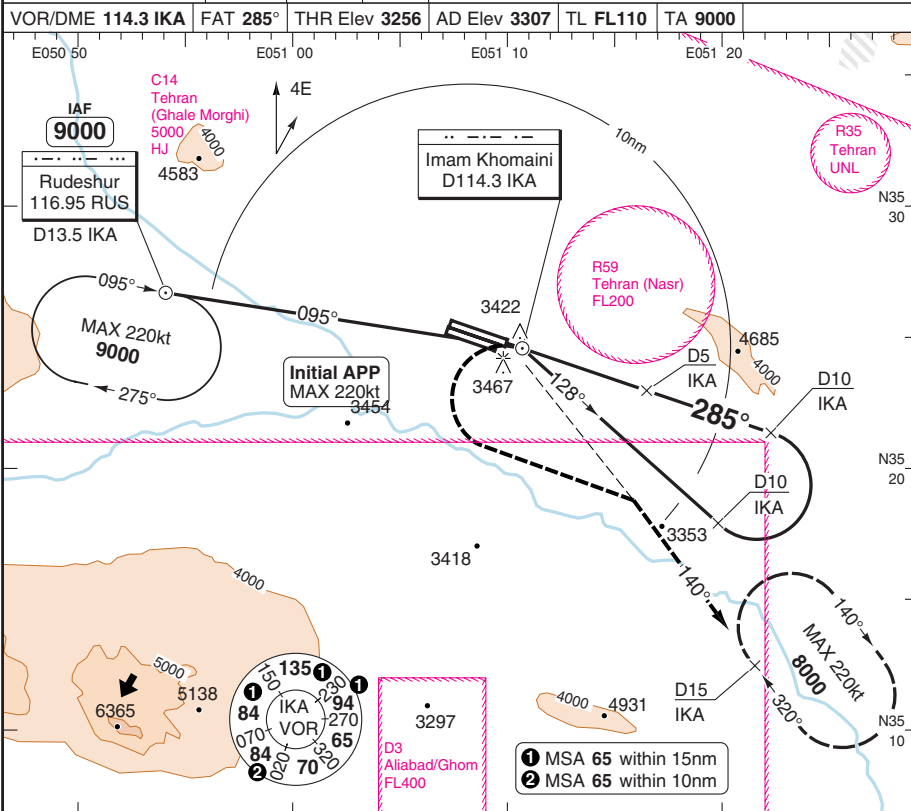
FALS

Change: TL, Re-numbered.

VOR RWY 29R VOR/DME 4

Imam Khomani INTL TEHRAN

Mehrabad APP/RAD 119.7 125.1 124.45	Ika TWR 118.7	GND 121.6 121.825	ATIS 127.2
VOR/DME 114.3 IKA	FAT 285°	THR Elev 3256	AD Elev 3307
TL FL110	TA 9000		



ACFT	VOR+DME	Circling	DME	3.0° ALT	LDA 4198x45 13773x148ft P 3° (63)
A	3680 (424) 1300m	3760 (445) 1.5km	4	4790	
B		3810 (500) 1.6km	3	4470	
C		3910 (600) 2.4km	2	4150	
D		4020 (705) 3.6km	1	3830	
GS	80	100	120	140	160
ROD 3.0°	420	540	640	740	850

© Navtech - oiie13iaip00

50 - 13

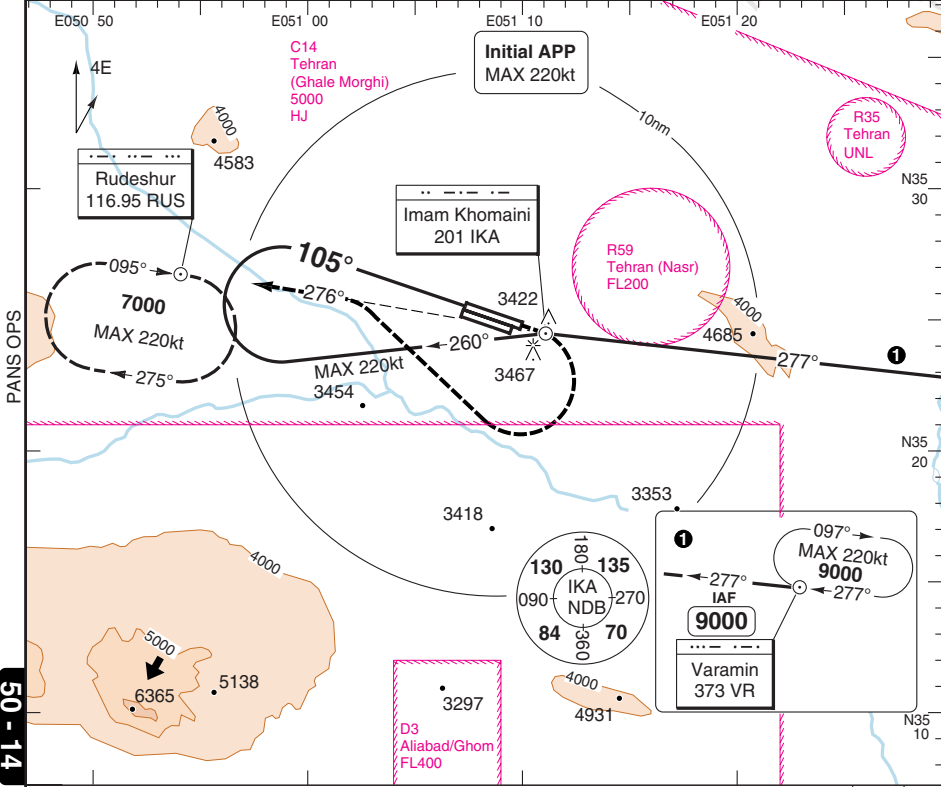
FALS

NDB RWY 11L CAT C/D

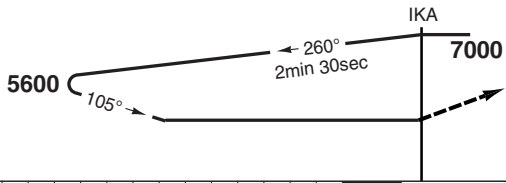
Imam Khomainsi INTL TEHRAN

Mehrabad APP/RAD	Ika TWR	GND	ATIS
119.7 125.1	118.7	121.6	127.2
124.45		121.825	

NDB 201 IKA	FAT 105°	THR Elev 3305	AD Elev 3307	TL FL110	TA 9000
-------------	----------	---------------	--------------	----------	---------



50 - 14



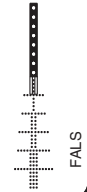
Turn right and climb on 276° from [IKA] to [RUS] HP at **7000**.

nm	14	13	12	11	10	9	8	7	6	5	4	3	2	1	0
----	----	----	----	----	----	---	---	---	---	---	---	---	---	---	---

ACFT	NDB	NDB ^a	Circling
C	4890 (1583) 5000m	4890 (1583) 5000m	4890 (1583) 5.0km
D			

^a Non CDF A

LDA 4198x45
13773x148ft
P 3° (63)



© Navtech - oiie14iap00 EU OPS

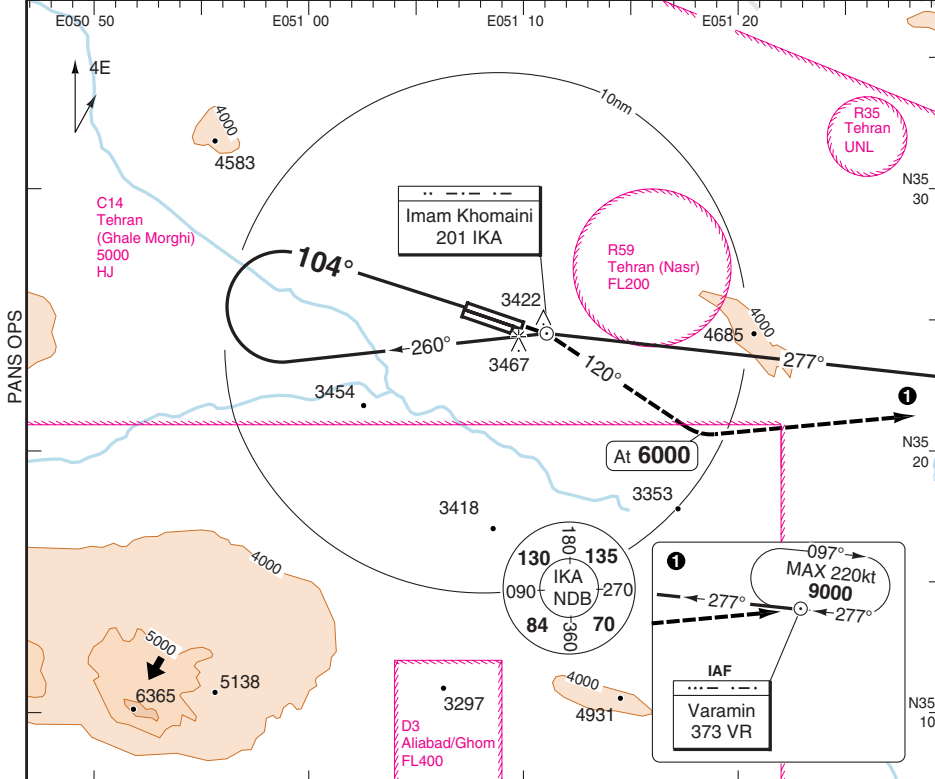
Change: Minima

NDB RWY 11R CAT C/D

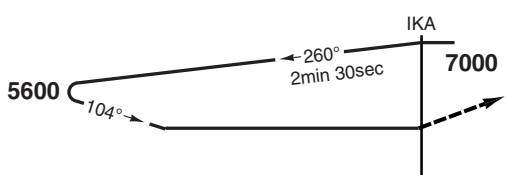
Imam Khomani INTL TEHRAN

Mehrabad APP/RAD 119.7 125.1 124.45	Ika TWR 118.7	GND 121.6 121.825	ATIS 127.2
---	------------------	-------------------------	---------------

NDB 201 IKA	FAT 104°	THR Elev 3307	AD Elev 3307	TL FL110	TA 9000
-------------	----------	---------------	--------------	----------	---------



50 - 15



Turn right and climb on 120° from **IKA** to **6000**, then turn left to **VR** HP at **9000**.



ACFT	NDB	NDB ^a	Circling
C	4890 (1583) 5000m	4890 (1583) 5000m	4890 (1583) 5.0km
D			

^a Non CDFA

LDA 3660x45
12008x148ft
P 3.4° (63)

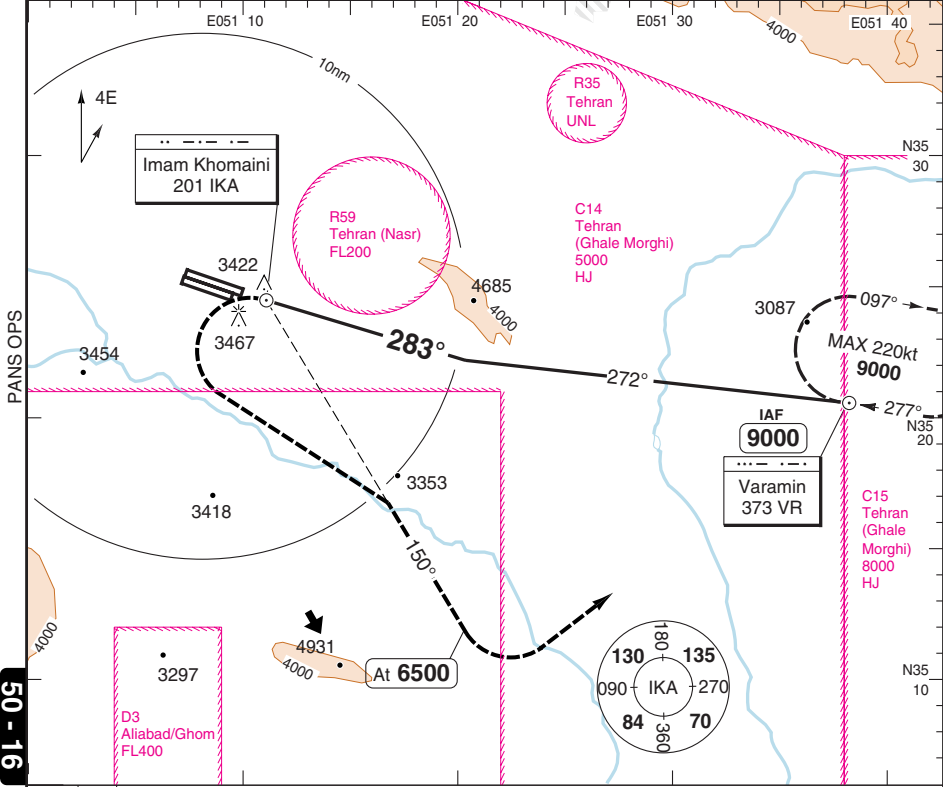


NDB 283 CIRCLING CAT C/D

Imam Khomainsi INTL TEHRAN

Mehrabad APP/RAD 119.7 124.45	Ika TWR 125.1	GND 118.7 121.6 121.825	ATIS 127.2
-------------------------------------	------------------	----------------------------------	---------------

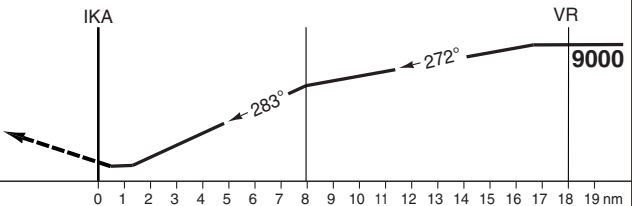
NDB 201 IKA	FAT 283°	AD Elev 3307	TL FL110	TA 9000
-------------	----------	--------------	----------	---------



50 - 16

MAPt IKA

Turn left and climb on 150° from IKA to 6500, then turn left to VR HP at 9000.



ACFT	NDB Circling
C	3910 (600) 2.4km
D	4010 (703) 3.6km

© Navtech - oiie16iaip00 EU OPS

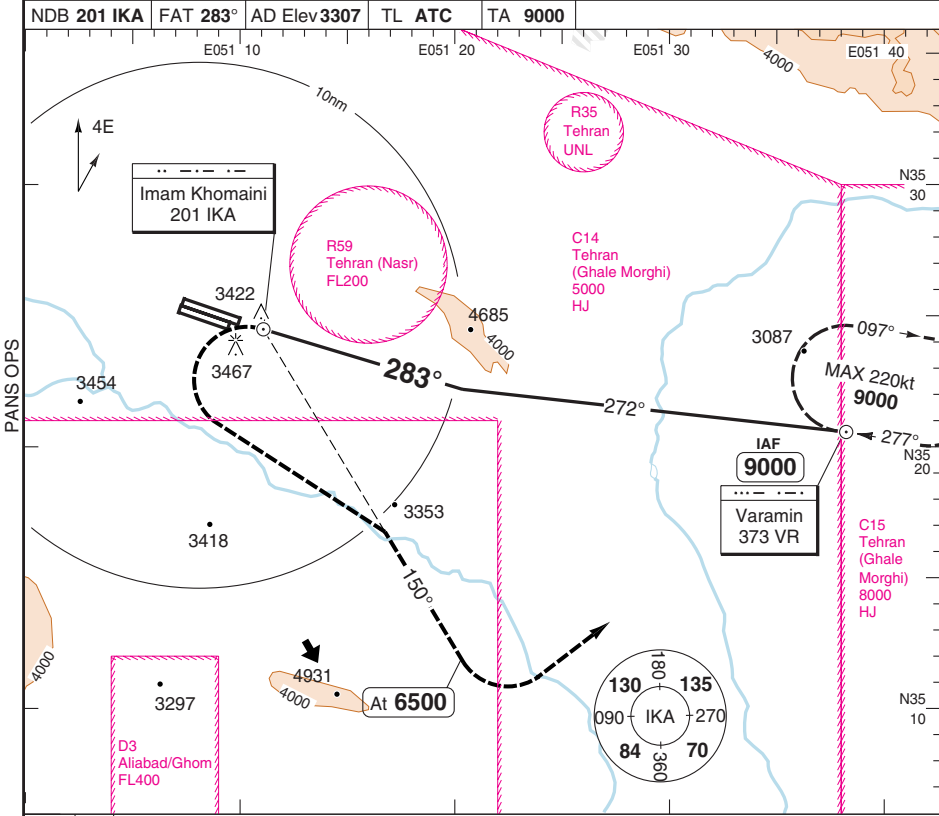
Change: TL, Re-numbered.

THIS CHART IS A PART OF NAVIGRAPH NDAC AND IS INTENDED FOR FLIGHT SIMULATION USE ONLY

NDB 283 CIRCLING CAT C/D

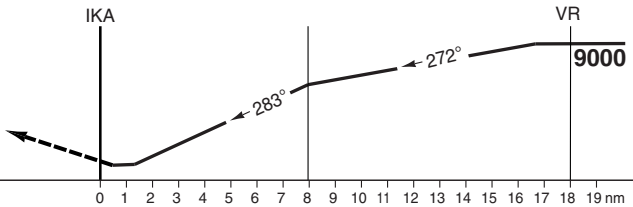
Imam Khomainsi INTL TEHRAN

Mehrabad APP/RAD 119.7 125.1 124.45	Ika TWR 118.7	GND 121.6 121.825	ATIS 127.2
NDB 201 IKA	FAT 283°	AD Elev 3307	TL ATC
		TA 9000	



MAPt IKA

Turn left and climb on 150° from IKA to 6500, then turn left to VR HP at 9000.



ACFT	NDB Circling
C	3910 (600) 2.4km
D	4010 (703) 3.6km

50 - 17

JAR-OPS Landing Minima

Imam Khomeini INTL TEHRAN

The following Minima is for Public Transport aircraft and conforms to JAR-OPS1 regulations.

STRAIGHT-IN APPROACH		C				D			
R/W	Procedure	DA/ MDA QNH ft	DH/ MDH QFE ft	RVR m	RVR No ALS m	DA/ MDA QNH ft	DH/ MDH QFE ft	RVR m	RVR No ALS m
11L	ILS/DME	3530	230	800	1000	3530	230	800	1000
11L	LOC/DME	3750	450	1000	1800	3750	450	1400	2000
11L	VOR/DME (1)	3760	460	1200	2000	3760	460	1600	2000
11L	NDB (1)	4890	1590	1400	2000	4890	1590	1800	2000
11R	VOR/DME (M/App 3.8%)(1)	3880	580	1800	2000	3880	580	2000	2000
11R	NDB (1)	4890	1590	2000	2000	4890	1590	2000	2000
29L	VOR/DME	3880	620	1800	2000	3880	620	2000	2000
29R	ILS/DME (M/App 3.3%)(2)	3470	220	600	1000	3480	230	600	1000
29R	LOC/DME (M/App 3.3%)(2)	3680	430	1000	1800	3680	430	1400	2000
29R	VOR/DME	3680	430	1000	1800	3680	430	1400	2000

Notes:

(1) Procedure based on aerodrome elevation.

(2) NDB to ILS 2 procedure only available to Cat C and D aircraft.

CIRCLING		C			D		
R/W	Procedure	MDA QNH ft	MDH QFE ft	Vis m	MDA QNH ft	MDH QFE ft	Vis m
-	NDB to CIRC	3910	600	2400	4010	710	3600
11L	ILS/DME, LOC/DME	3910	600	2400	4010	710	3600
11L	VOR/DME	3910	600	2400	4010	710	3600
11L/R	NDB	4890	1590	2400	4890	1590	3600
11R	VOR/DME	3910	600	2400	4010	710	3600
29L	VOR/DME	3930	620	2400	4010	710	3600
29R	All other procedures	3860	600	2400	3970	710	3600

Notes:

TAKE-OFF		C		D	
Runway	Facilities	RVR	Vis	RVR	Vis
11L, 29R (1)	RCLL + RCL	300	-	300	-
All (1)	REDL + RCL	400	-	400	-
All (1)	Nil (Day only)	500	-	500	-

Notes:

(1) LVP must be in force.

JAR-OPS Landing Minima

Imam Khomainsi INTL TEHRAN

The following Minima is for Public Transport aircraft and conforms to JAR-OPS1 regulations.

STRAIGHT-IN APPROACH		A				B			
R/W	Procedure	DA/ MDA QNH ft	DH/ MDH QFE ft	RVR m	RVR No ALS m	DA/ MDA QNH ft	DH/ MDH QFE ft	RVR m	RVR No ALS m
11L	ILS/DME	3530	230	800	1000	3530	230	800	1000
11L	LOC/DME	3750	450	900	1500	3750	450	1000	1500
11L	VOR/DME (1)	3760	460	1000	1500	3760	460	1200	1500
11L	NDB (1)	N/A	N/A	N/A	N/A	N/A	N/A	N/A	N/A
11R	VOR/DME (M/App 3.8%)(1)	N/A	N/A	N/A	N/A	N/A	N/A	N/A	N/A
11R	NDB (1)	N/A	N/A	N/A	N/A	N/A	N/A	N/A	N/A
29L	VOR/DME	N/A	N/A	N/A	N/A	N/A	N/A	N/A	N/A
29R	ILS/DME (M/App 3.3%)(2)	3460	200	550	1000	3460	210	600	1000
29R	LOC/DME (M/App 3.3%)(2)	3680	430	900	1500	3680	430	1000	1500
29R	VOR/DME	3680	430	900	1500	3680	430	1000	1500

Notes:

(1) Procedure based on aerodrome elevation.

(2) NDB to ILS 2 procedure only available to Cat C and D aircraft.

CIRCLING		A			B		
R/W	Procedure	MDA QNH ft	MDH QFE ft	Vis m	MDA QNH ft	MDH QFE ft	Vis m
	- NDB to CIRC	N/A	N/A	N/A	N/A	N/A	N/A
11L	ILS/DME, LOC/DME	3750	450	1500	3810	500	1600
11L	VOR/DME	3800	500	1500	3810	500	1600
11L/R	NDB	N/A	N/A	N/A	N/A	N/A	N/A
11R	VOR/DME	N/A	N/A	N/A	N/A	N/A	N/A
29L	VOR/DME	N/A	N/A	N/A	N/A	N/A	N/A
29R	All other procedures	3710	450	1500	3760	500	1600

Notes:

TAKE-OFF		A		B	
Runway	Facilities	RVR	Vis	RVR	Vis
11L, 29R (1)	RCLL + RCL	300	-	300	-
All (1)	REDL + RCL	400	-	400	-
All (1)	Nil (Day only)	500	-	500	-

Notes:

(1) LVP must be in force.

JAR-OPS Landing Minima

Imam Khomeini INTL **TEHRAN**

The following Minima is for Public Transport aircraft and conforms to JAR-OPS1 regulations.

CAT II

Special aircrew and aircraft certification required.

	C				D			
	DA	DH	RA	RVR	DA	DH	RA	RVR
	QNH	QFE			QNH	QFE		
Runways	ft	ft	ft	m	ft	ft	ft	m
29R (M/App 3.3%)	3401	145	147	450	3416	160	162	450

Notes:

	A				B			
	DA	DH	RA	RVR	DA	DH	RA	RVR
	QNH	QFE			QNH	QFE		
Runways	ft	ft	ft	m	ft	ft	ft	m
29R (M/App 3.3%)	3371	115	115	350	3386	130	131	400

Notes: