

Airport information:

Country: Saudi Arabia

City: HAIL

Coordinates: N 27° 26.4', E041 41.2

Elevation: 3331

Customs: N/A

Fuel: Jet A1

RFF: CAT 8

hours: AD: 0730-1430, ATS 0400-1800

Runways:

Runway 18

Takeoff length: 3300, Landing length: 3300

Runway 36

Takeoff length: 3300, Landing length: 3300

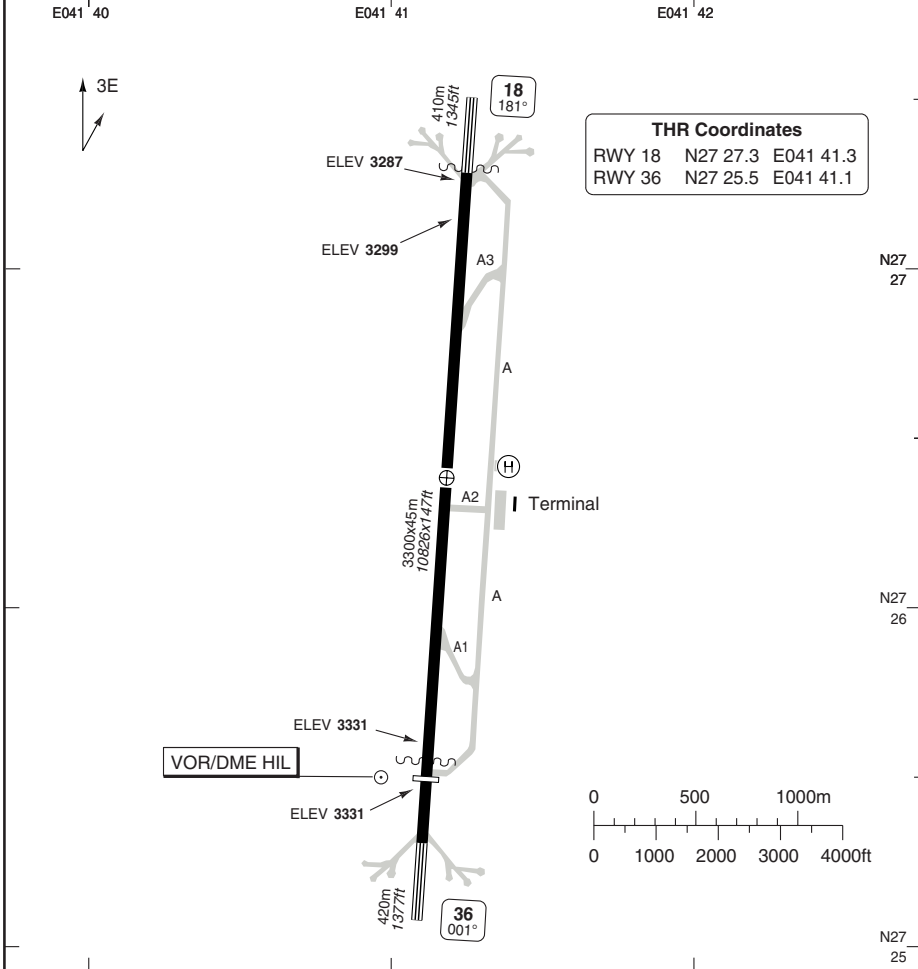
AERODROME

HAIL

10 - 1

Hail GND 121.9	TWR 118.7	TIBA MANDATORY 122.8	Fire 133.5	ATIS 127.85
--------------------------	---------------------	--------------------------------	----------------------	-----------------------

AD Elev 3331	ARP: N27 26.4 E041 41.2	RFF: CAT 8	AD HR: (03-21)
---------------------	-------------------------	------------	----------------



RWY	Slope	TORA m/ft	LDA m/ft	ALS	REDL	Additional
18	+0.3	3300 / 10826	3300 / 10826	-	M	P 3°
36	-0.3	3300 / 10826	3300 / 10826	-	M	P 3°

TERPS TAKE OFF MINIMA

RWY	Facilities	RVR/VIS	
		2 ENG	3 - 4 ENG
15/33	Standard	1.6km	0.8km

PLANNING MINIMA - ALTERNATE

Precision:	NA	Non precision:	NA	RNAV:	NA
------------	----	----------------	----	-------	----

© Navitech - oehl01laorg0

Change: Comms, minima.

THIS CHART IS A PART OF NAVIGRAPH NDAC AND IS INTENDED FOR FLIGHT SIMULATION USE ONLY

AERODROME

HAIL

10 - 2

GENERAL INFORMATION

1. AERODROME RESTRICTION

Use as ALTN during HS.

2. COMMUNICATION

Contact Fire and Rescue on 133.5 at least 15min before LDG.

3. IFR DEPARTURE PROC (IMC)

RWY 18

Climb on R174 HIL (Alternate: 185° to HI) to **6000** before climbing on course.

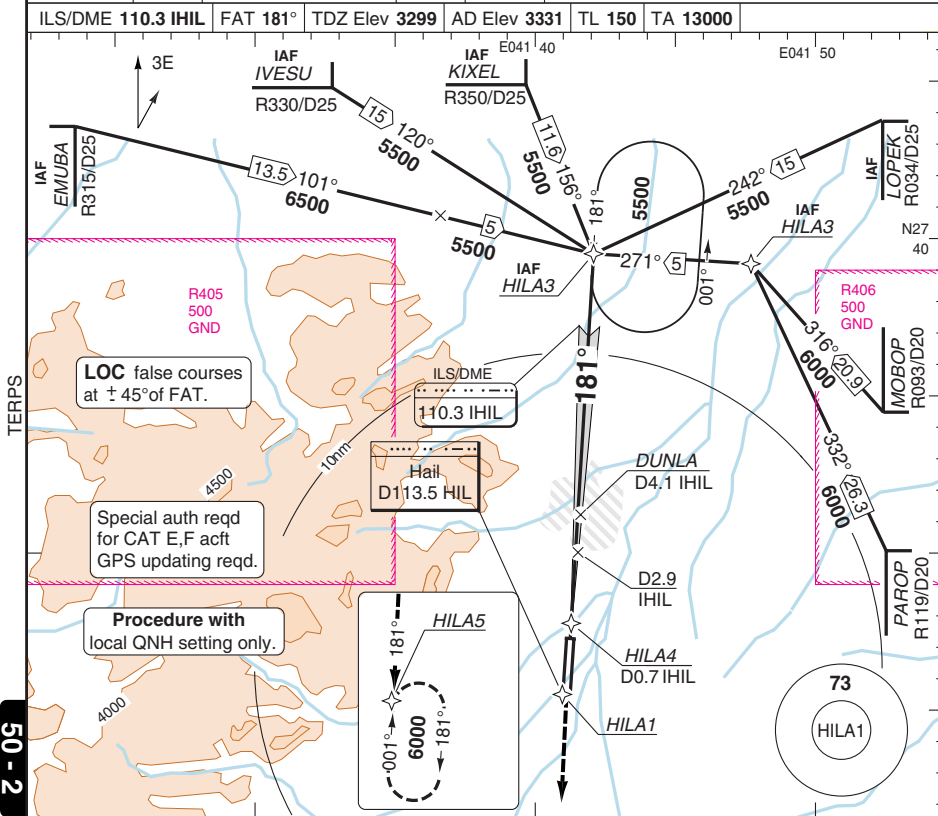
RWY 36

Climb on R003 HIL (Alternate: 003° to HI) to **6000** before climbing on course.

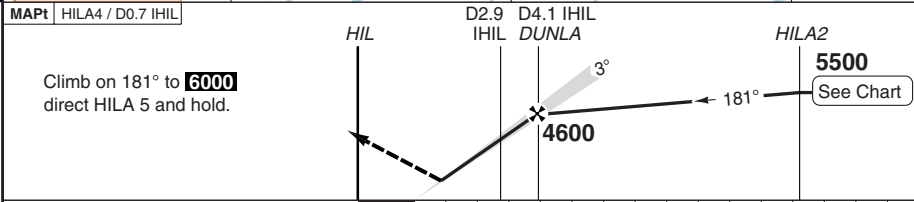
ILS RWY 18 **RNAV**

HAIL

Hail TWR 118.7	GND 121.9	TIBA MANDATORY 122.8	Fire 133.5	ATIS 127.85
ILS/DME 110.3 IHIL	FAT 181°	TDZ Elev 3299	AD Elev 3331	TL 150 TA 13000



50 - 2



TCH 53

ACFT	ILS	LOC	Circling
A	3500 (200) 1.2km	3700 (401) 1.6km	3840 (509) 1.6km
B			4100 (769) 2.0km
C	3700 (401) 2.0km	3700 (401) 2.0km	4200 (869) 4.0km a
D			4260 (929) 4.8km a

a NA west of AD

DME	3.0°	LDA 3300x45
IHIL	ALT	10826x147ft
6.9	5500	P 3°
6	5210	
5	4890	
4	4570	
3	4250	
2	3930	
1.3	3700	

GS	80	100	120	140	160
ROD 3.0°	430	540	650	750	860

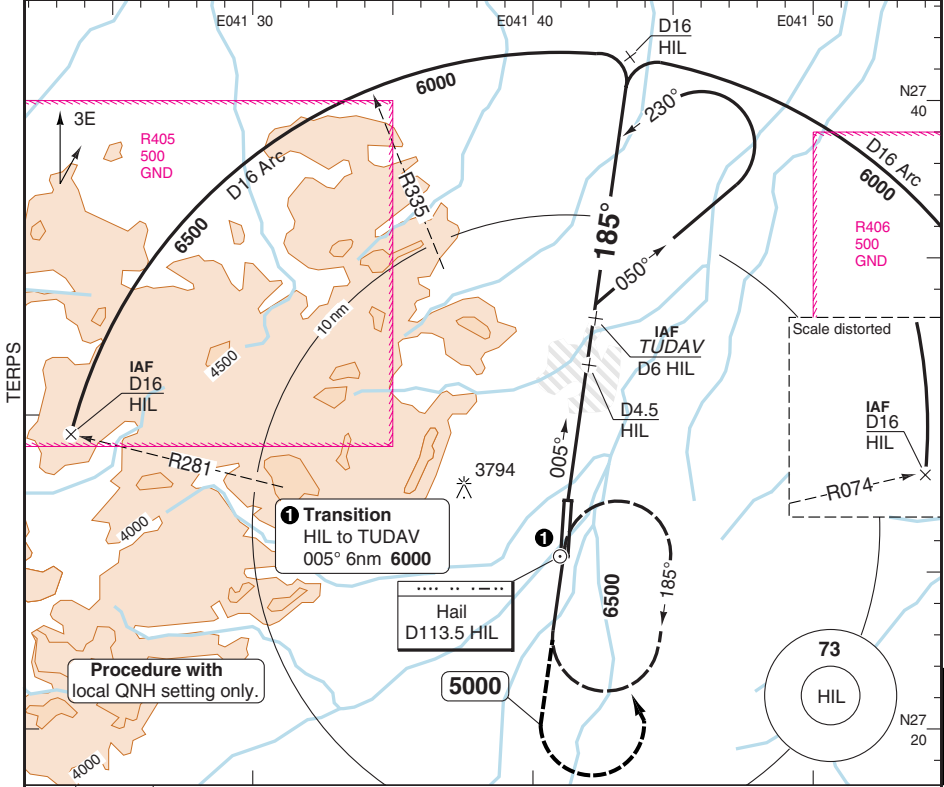
© Navtech - oeht02iaip00

VOR RWY 18 VOR/DME

HAIL

Hail TWR 118.7	GND 121.9	TIBA MANDATORY 122.8	Fire 133.5	ATIS 127.85
-------------------	--------------	-------------------------	---------------	----------------

VOR/DME 113.5 HIL	FAT 185°	TDZ Elev 3299	AD Elev 3331	TL 150	TA 13000
-------------------	----------	---------------	--------------	--------	----------

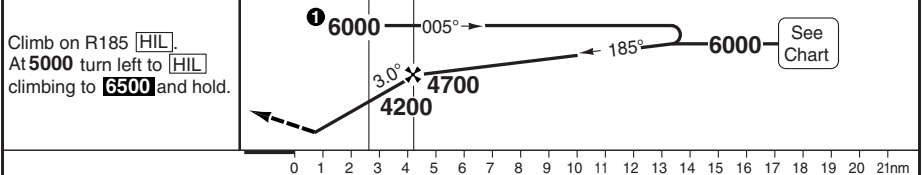


1 Transition
HIL to TUDAV
005° 6nm 6000

Procedure with
local QNH setting only.

Scale distorted
IAF D16 HIL
R074

MAPt D2.4 HIL	HIL	D4.5 HIL	D6.0 HIL TUDAV	PTN Within 10nm TUDAV
---------------	-----	----------	----------------	-----------------------



ACFT	VOR+DME	Circling	a NA west of AD						DME	3.0°	LDA 3300x45
A	3700 (401) 1.6km	3840 (509) 1.6km							HIL	ALT	10826x147ft
B		4100 (769) 2.0km							10.1	6000	P 3°
C	3700 (401) 2.0km	4200 (869) 4.0km (a)							8	5350	
D		4260 (929) 4.8km (a)							7	5020	
									6	4700	
									5	4380	
									4	4060	
									3	3740	
GS	80	100	120	140	160						
ROD 3.0°	430	540	650	760	860						

© Navitech - oeht03aiap00

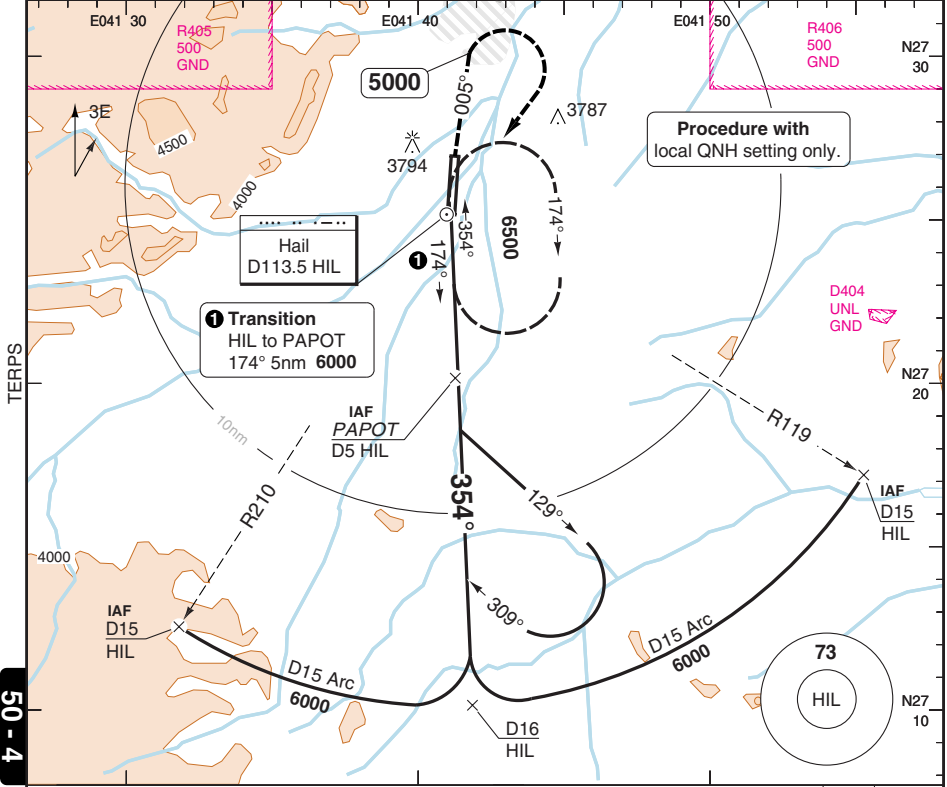
50 - 3

VOR RWY 36 VOR/DME

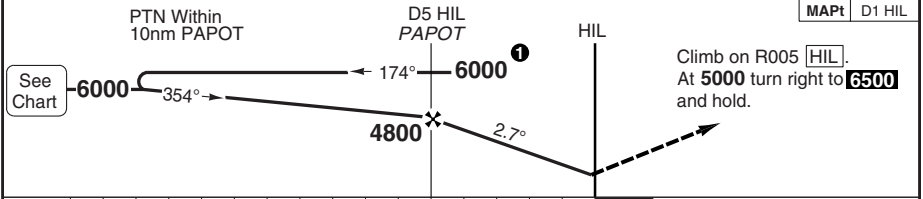
HAIL

Hail TWR 118.7	GND 121.9	TIBA MANDATORY 122.8	Fire 133.5	ATIS 127.85
-------------------	--------------	-------------------------	---------------	----------------

VOR/DME 113.5 HIL	FAT 354°	DTHR Elev 3331	AD Elev 3331	TL 150	TA 13000
-------------------	----------	----------------	--------------	--------	----------



50 - 4



nm16	15	14	13	12	11	10	9	8	7	6	5	4	3	2	1	0
------	----	----	----	----	----	----	---	---	---	---	---	---	---	---	---	---

ACFT	VOR+DME	Circling
A	3740 (409) 1.6km	3840 (509) 1.6km
B		4100 (769) 2.0km
C	3740 (409) 2.0km	4200 (869) 4.0km (a)
D		4260 (929) 4.8km (a)

(a) NA west of AD

DME HIL	2.7° ALT	LDA 3300x45 10826x147ft P 3°
9.2	6000	
7	5370	
6	5090	
5	4800	
4	4520	
3	4240	
2	3950	
1.3	3740	

GS	80	100	120	140	160
ROD 3.0°	380	480	570	670	760

© Navtech - oeht04iap00