

Airport information:

Country: Cayman Islands

City: GRAND CAYMAN

Coordinates: N 19° 17.6', W 081° 21.6'

Elevation: 8

Customs: Customs

Fuel: Jet A1, AVGAS, 100LL

RFF: CAT 8

hours: 12-02

Runways:

Runway 08

Takeoff length: 2136, Landing length: 2136

Runway 26

Takeoff length: 2136, Landing length: 2014

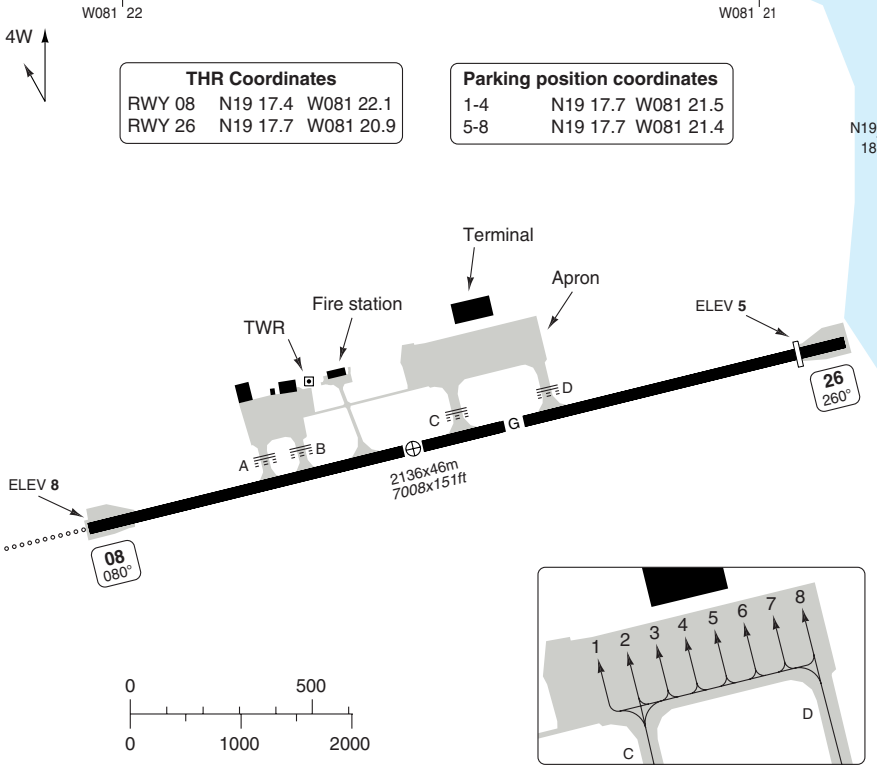
AERODROME

Owen Roberts INTL GRAND CAYMAN

10 - 1

Owen Roberts TWR 118.0 121.9	ATIS 132.35		
--------------------------------------------------	-----------------------	--	--

AD Elev 8	ARP: N19 17.5 W081 21.6	RRF: CAT 8	AD HR: 12-02, other times O/R.
------------------	-------------------------	------------	--------------------------------



RWY	Slope	TORA m/ft	LDA m/ft	ALS	REDL	Additional
08	0	2136 / 7008	2136 / 7008	M-L ①	H ②	P3° (52) REIL
26	0	2136 / 7008	2014 / 6608	-	H ②	P3° (54) REIL

① 600m. ② White.

EU OPS TAKE OFF MINIMA

RWY	Facilities	RVR			
		A	B	C	D
08/26	RCL (day only) or RCL + REDL	400m			
	NIL (day only)	500m			

© Navtech - mwcr01laorgo

Change: TORA, LDA, THR Coordinates.

THIS CHART IS A PART OF NAVIGRAPH NDAC AND IS INTENDED FOR FLIGHT SIMULATION USE ONLY

AERODROME

Owen Roberts INTL **GRAND CAYMAN****GENERAL****1. NOISE ABATEMENT PROCEDURE**

- 1.1 Flights below 1500ft, within 2000ft of the coastline are prohibited, except for takeoff and landing.
- 1.2 Landing RWY 08:
Turns to final shall not be made over George Town and ACFT shall be established on final APP course prior to crossing the coastline.
- 1.3 Take-off RWY 08/26:
Take-off must be commenced from RWY 08, unless the prevailing winds dictate the use of RWY 26. Climb on RWY HDG until 3000ft before proceeding on course, between 0000 and 1200 UTC.

Take-off to 1000ft above aerodrome elevation:

- take-off power/thrust.
- take-off flap.
- climb at V_2+10 to 20kt.

At 1000ft:

- maintain a positive rate of climb, accelerate to zero flap minimum safe manoeuvring speed (V_{ZF}) retracting flaps on schedule;
- thereafter reduce thrust consistent with the following:
 - reduce power/thrust to below normal climb thrust but not less than necessary to maintain the final take-off engine out climb gradient; and
 - thereafter, from 1000ft to 3000ft:
 - continue climb at not greater than $V_{ZF} + 10$ kt.

At 3000ft:

- accelerate smoothly to en-route climb speed.

2. SPEED

MAX 250kt below 10500ft.

3. TRAFFIC NOTE

Traffic circuit unless otherwise by ATC:
RWY 08 right hand circuit.
RWY 26 left hand circuit.

4. WARNING

Bird formation occurs frequently at the APP end of RWY 08/26.

5. ATC CLEARANCE

Request for ATC clearance may take place at the earliest, 10min prior to ENG start-up.

SID RWY 08 North, East

Owen Roberts INTL GRAND CAYMAN

Owen Roberts TWR 118.0 121.9	Cayman APP 120.2	ATIS 132.35
--------------------------------------------------	----------------------------	-----------------------

TA 17000 AD Elev 8

VOR/DME Required

RIKEL
D46 GCM
N20 00.0
W081 02.7

KANEX
D56 GCM
N20 00.0
W080 43.1

RIKEL 2
STRING RAY 2

KANEX 2

D15 GCM
N19 28.7
W081 11.8

U/G87
027°

U/B767
045°

TURTUGA 2

ELEGO
D9 GCM
N19 22.0
W081 14.2

U/R644
078°

TEXAM
D44 GCM
N19 29.3
W080 37.5

At 500

048°

063°

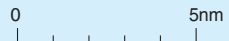
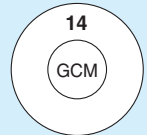
EAST END 2

NADON
D15 GCM
N19 17.1
W081 06.5

Grand Cayman
D115.6 GCM
N19 17.4
W081 22.3

LIDOV
D7 GCM
N19 15.7
W081 15.1

8.3 084°



SPEED: MAX 250kt below 10500ft

SID	Routeing
EAST END 2	Climb on 080° - at 500 turn right - 123° - intcp R108 GCM - LIDOV - turn left - 084° - NADON - turn left - 050° - climb to 5000 or assigned alt - intcp R078 GCM
KANEX 2	Climb on 080° - at 500 turn left climbing to 8000 or assigned alt - intcp R045 GCM
RIKEL 2	Climb on 080° - at 500 turn left climbing to 8000 or assigned alt - intcp R027 GCM
STRING RAY 2	Climb on 080° - at 500 turn left - intcp R045 GCM climbing to 8000 or assigned alt - at D15 GCM - turn left - intcp R027 GCM
TURTUGA 2	Climb on 080° - at 500 turn left - 048° - intcp R063 GCM - ELEGO - turn right - 091° - climbing to 5000 or assigned alt - intcp R078 GCM

© Navitech - mwcr01daorg0

Change: New spec.

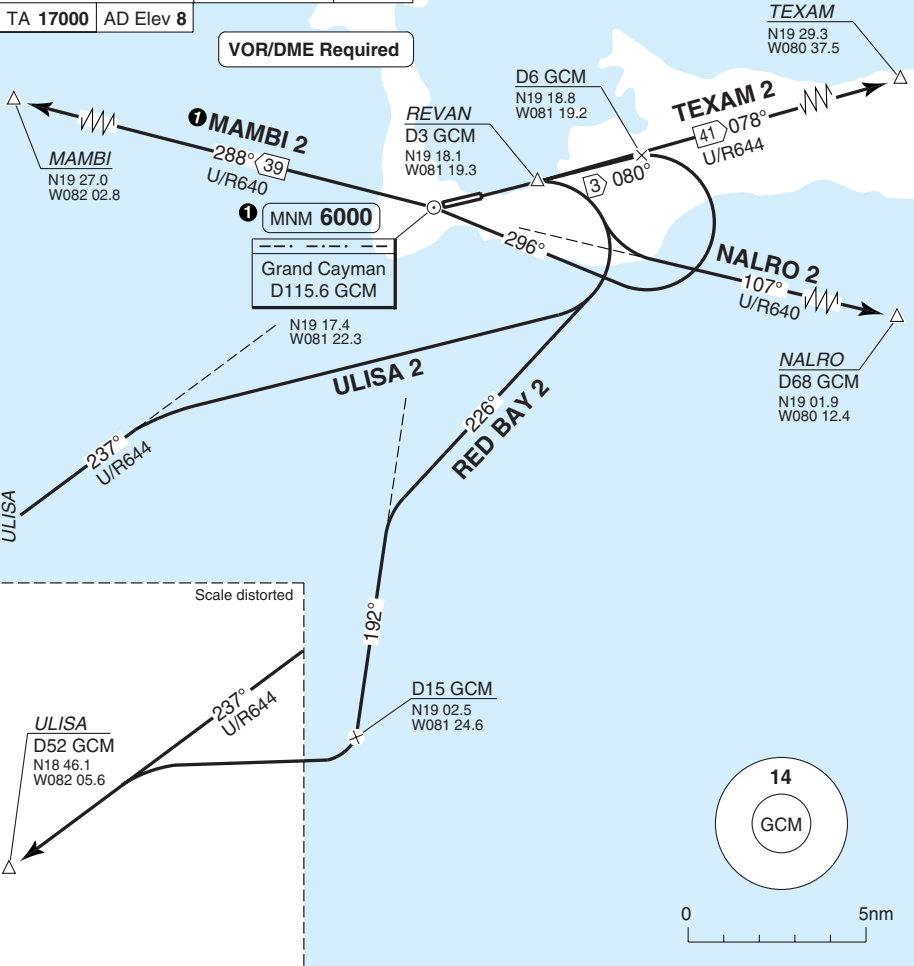
THIS CHART IS A PART OF NAVIGRAPH NDAC AND IS INTENDED FOR FLIGHT SIMULATION USE ONLY

SID RWY 08 East, Southwest, West Owen Roberts INTL GRAND CAYMAN

Owen Roberts TWR	Cayman APP	ATIS
118.0	120.2	132.35
121.9		

TA 17000 AD Elev 8

VOR/DME Required



SPEED: MAX 250kt below 10500ft

SID	Routing	Altitudes
MAMBI 2	Climb on 080° to REVAN - intcp R080 GCM - at D6 GCM turn right to intcp R116 GCM to GCM climbing to 8000 or assigned alt - intcp R288 GCM	GCM MNM 6000
NALRO 2	Climb on 080° to REVAN - turn right climbing to 7000 or assigned alt - intcp R107 GCM	
RED BAY 2	Climb on 080° to REVAN - turn right on 226° to intcp R192 GCM climbing to 8000 or assigned alt - at D15 GCM turn right to intcp R237 GCM	
TEXAM 2	Climb on 080° to REVAN - intcp R078 GCM climbing to 5000 or assigned alt	
ULISA 2	Climb on 080° to REVAN - turn right climbing to 8000 or assigned alt - intcp R237 GCM	

© Navitech - mwcr02daorg0

Change: New spec.

THIS CHART IS A PART OF NAVIGRAPH NDAC AND IS INTENDED FOR FLIGHT SIMULATION USE ONLY

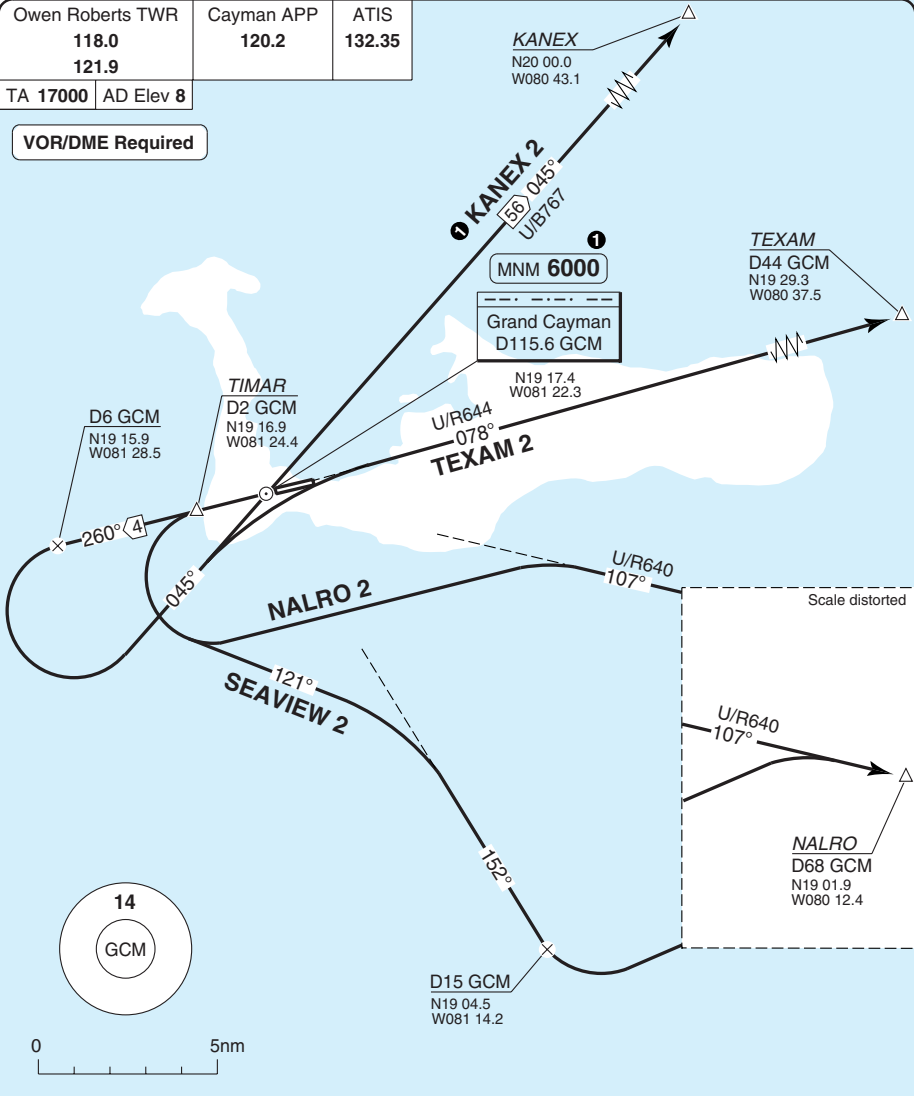
SID RWY 26 Northeast, East

Owen Roberts INTL GRAND CAYMAN

Owen Roberts TWR	Cayman APP	ATIS
118.0	120.2	132.35
121.9		

TA 17000 AD Elev 8

VOR/DME Required



SPEED: MAX 250kt below 10500ft

SID	Routeing	Altitudes
KANEX 2	Climb on 260° to TIMAR - intcp R260 GCM - at D6 GCM turn left to intcp R255 GCM to GCM - R045 GCM climbing to 8000 or assigned alt	GCM MNM 6000
NALRO 2	Climb on 260° to TIMAR - turn left to intcp R107 GCM climbing to 7000 or assigned alt	
SEAVIEW 2	Climb on 260° to TIMAR - turn left on 121° to intcp R152 GCM climbing to 7000 or assigned alt - at D15 GCM turn left to intcp R107 GCM	
TEXAM 2	Climb on 260° to TIMAR - intcp R260 GCM - at D6 GCM turn left to intcp R255 GCM to GCM - R078 GCM climbing to 7000 or assigned alt	GCM MNM 6000

© Navitech - mwcr03daorg0

Change: New spec.

THIS CHART IS A PART OF NAVIGRAPH NDAC AND IS INTENDED FOR FLIGHT SIMULATION USE ONLY

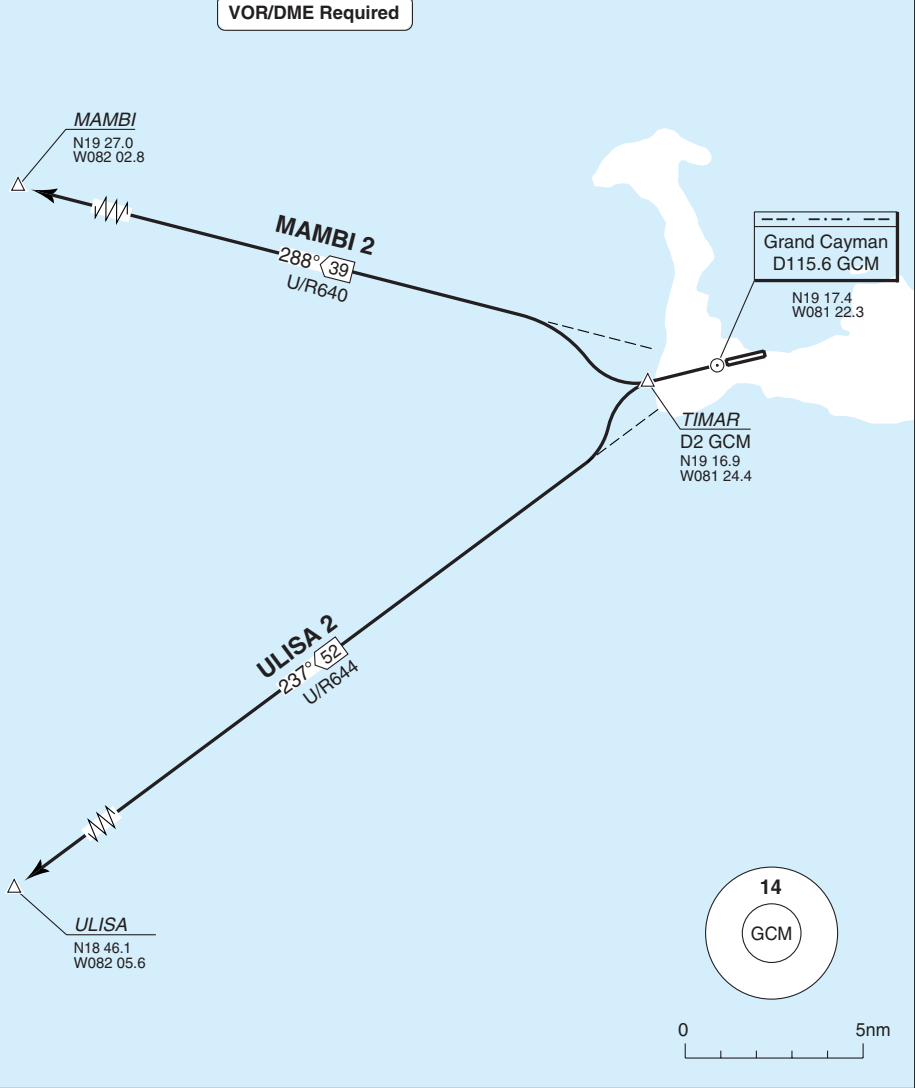
SID RWY 26 Southwest, West

Owen Roberts INTL GRAND CAYMAN

Owen Roberts TWR 118.0 121.9	Cayman APP 120.2	ATIS 132.35
--------------------------------------------------	----------------------------	-----------------------

TA 17000 AD Elev 8

VOR/DME Required



SPEED: MAX 250kt below 10500ft

SID	Routeing
MAMBI 2	Climb on 260° to TIMAR - turn right to intcp R288 GCM climbing to 8000 or assigned alt
ULISA 2	Climb on 260° to TIMAR - turn left to intcp R237 GCM climbing to 8000 or assigned alt

© Navitech - mwcr04daorg0

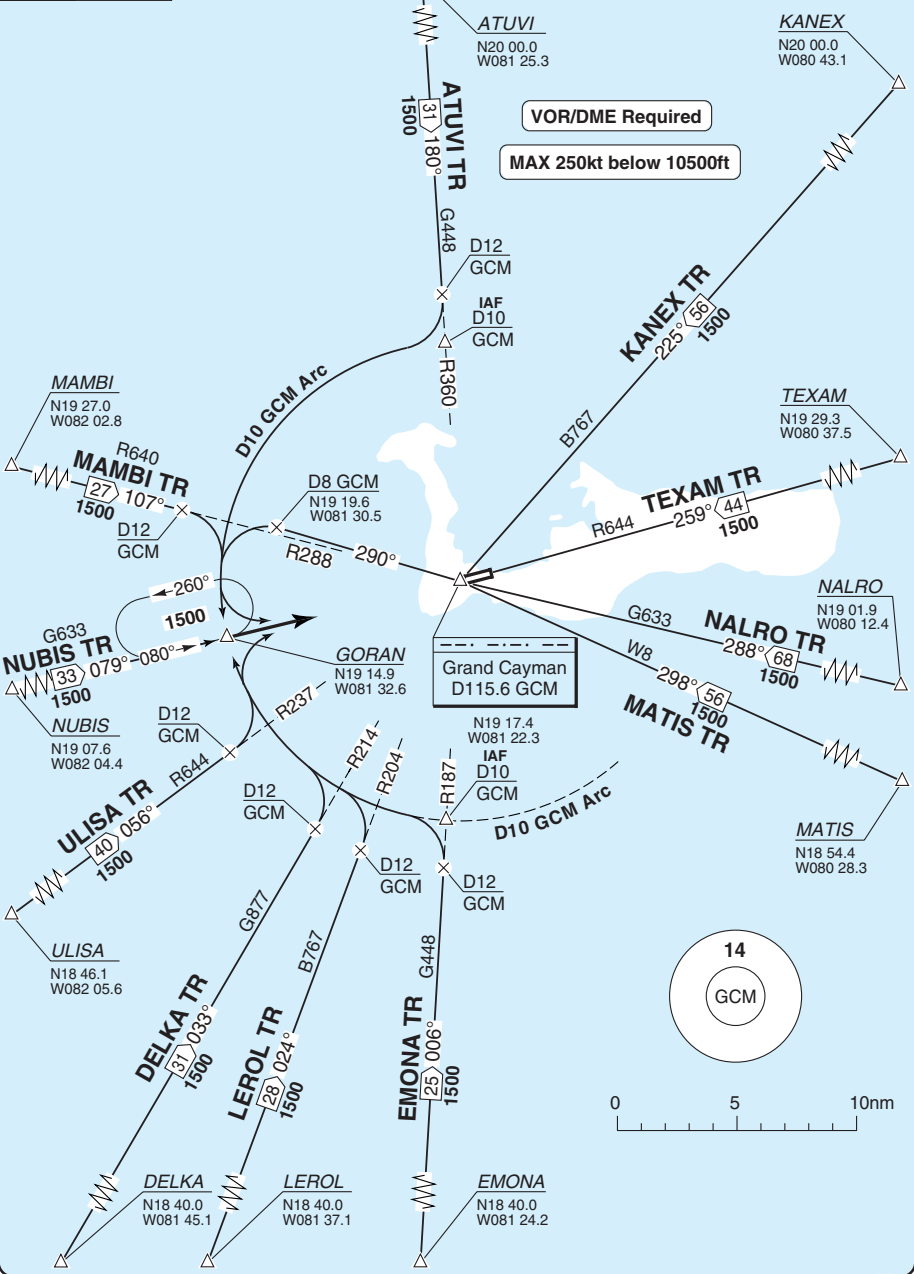
Change: New spec.

STAR RWY 08 GORAN 2

Owen Roberts INTL GRAND CAYMAN

Cayman APP 120.2	Owen Roberts TWR 118.0 121.9	ATIS 132.35
----------------------------	--------------------------------------------------	-----------------------

TL 180 | AD Elev 8



© Navitech - mwcr01.aaoorg

Change: Procedure revised.

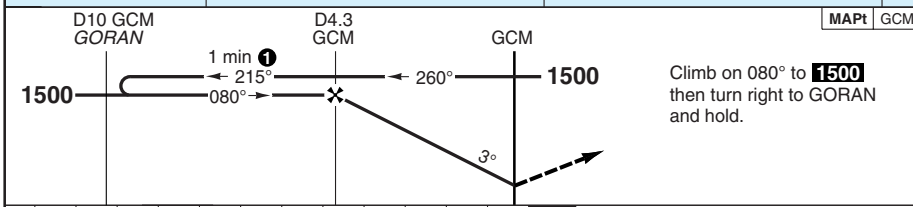
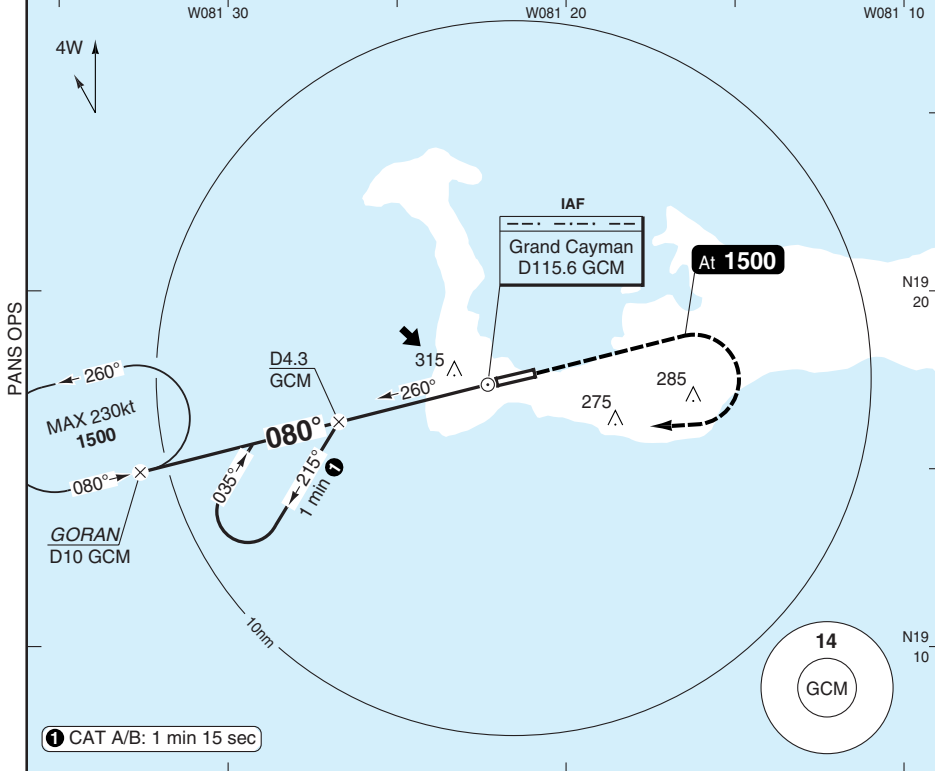
THIS CHART IS A PART OF NAVIGRAPH NDAC AND IS INTENDED FOR FLIGHT SIMULATION USE ONLY

VOR RWY 08 VOR/DME

Owen Roberts INTL GRAND CAYMAN

Cayman APP 120.2	Owen Roberts TWR 118.0 121.9	ATIS 132.35
----------------------------	--------------------------------------------------	-----------------------

VOR 115.6 GCM	FAT 080°	THR Elev 8	AD Elev 8	TL 180	TA 17000
----------------------	-----------------	-------------------	------------------	---------------	-----------------



nm	12	11	10	9	8	7	6	5	4	3	2	1	0
----	----	----	----	---	---	---	---	---	---	---	---	---	---

ACFT	VOR+DME	Circling
A	520 (512) 1500m	610 (602) 1.5km
B		610 (602) 1.6km
C	520 (512) 2100m	710 (702) 2.4km
D		710 (702) 3.6km

DME GCM	3.0° ALT	LDA 2136x46 7008x151ft P 3° (52), REIL
4.3	1500	
4	1410	
3	1100	
2	780	
1.2	520	

GS	80	100	120	140	160
ROD 3.0°	420	530	630	740	840

600

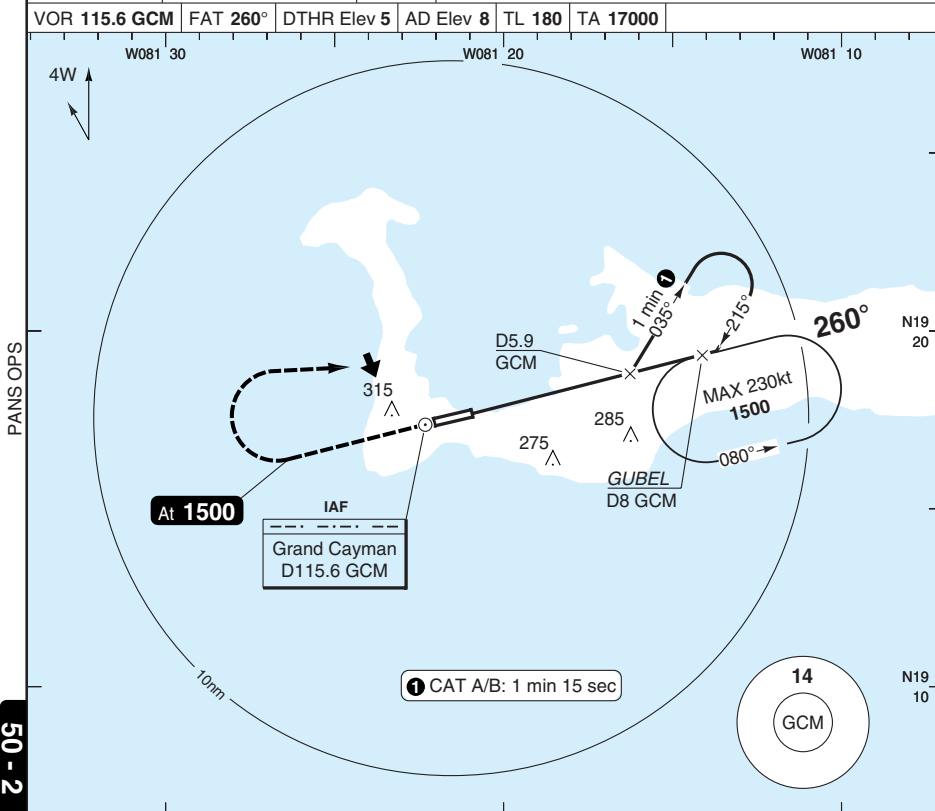
© Navtech - mwcr01iap00

50 - 1

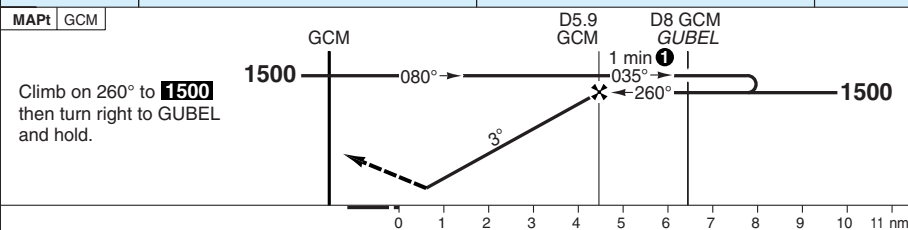
VOR RWY 26 VOR/DME

Owen Roberts INTL GRAND CAYMAN

Cayman APP 120.2	Owen Roberts TWR 118.0 121.9	ATIS 132.35	
VOR 115.6 GCM	FAT 260°	DTHR Elev 5	AD Elev 8
TL 180	TA 17000		



50 - 2



ACFT	VOR+DME	Circling
A	520 (512) 1500m	610 (602) 1.5km
B		610 (602) 1.6km
C	520 (512) 2400m	710 (702) 2.4km
D		710 (702) 3.6km

DME	3.0°	LDA 2014x46
GCM	ALT	6608x151ft
5.9	1500	P 3° (54), REIL
5	1220	
4	900	
2.9	520	

GS	80	100	120	140	160
ROD 3.0°	430	540	650	760	860

© Navtech - mwcr02iap00

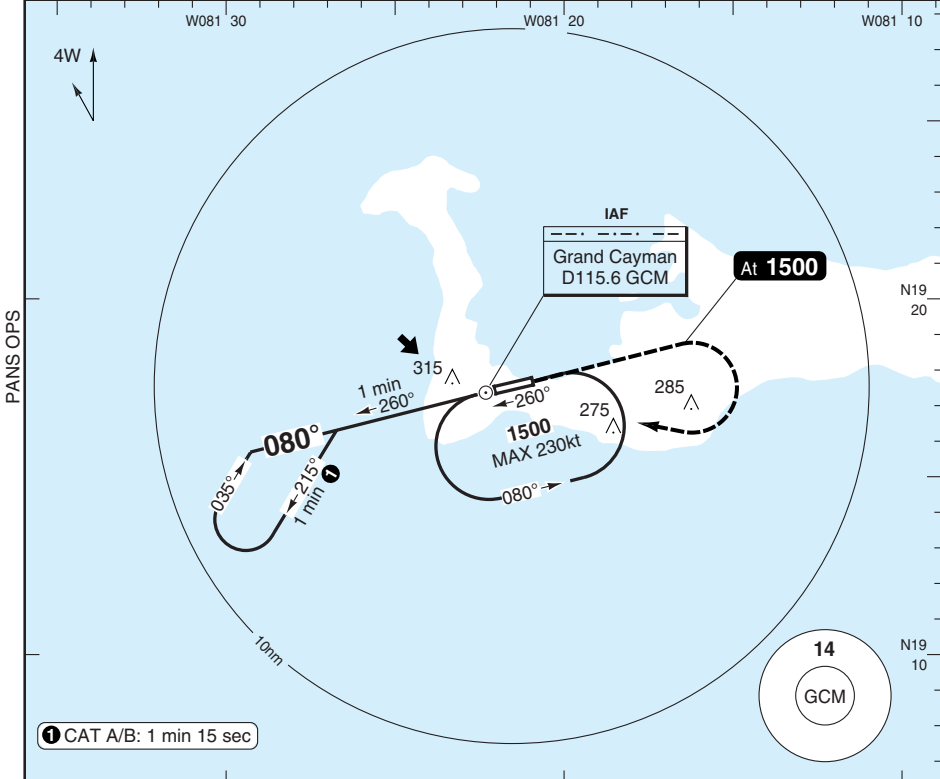
NALS

VOR RWY 08

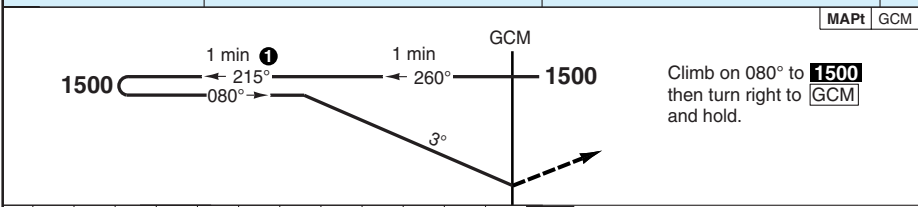
Owen Roberts INTL GRAND CAYMAN

Cayman APP 120.2	Owen Roberts TWR 118.0 121.9	ATIS 132.35
----------------------------	--------------------------------------------------	-----------------------

VOR 115.6 GCM	FAT 080°	THR Elev 8	AD Elev 8	TL 180	TA 17000
----------------------	-----------------	-------------------	------------------	---------------	-----------------



50 - 3



nm 12 11 10 9 8 7 6 5 4 3 2 1 0

ACFT	VOR	VOR a	Circling	Circling a	a Non CDFA	DME GCM	3.0° ALT	LDA 2136x46 7008x151ft P 3° (52), REIL
A	560 (552) 2300m	560 (552) 2500m	610 (602)	610 (602)		4.3	1500	
B			710 (702)	710 (702)		4	1410	
C		560 (552) 2700m	710 (702)	710 (702)		3	1100	
D			710 (702)	710 (702)		2	780	
						1.2	520	

GS	80	100	120	140	160
ROD 3.0°	420	530	630	740	840

© Navtech - mwcr03iap00

Change: New print.

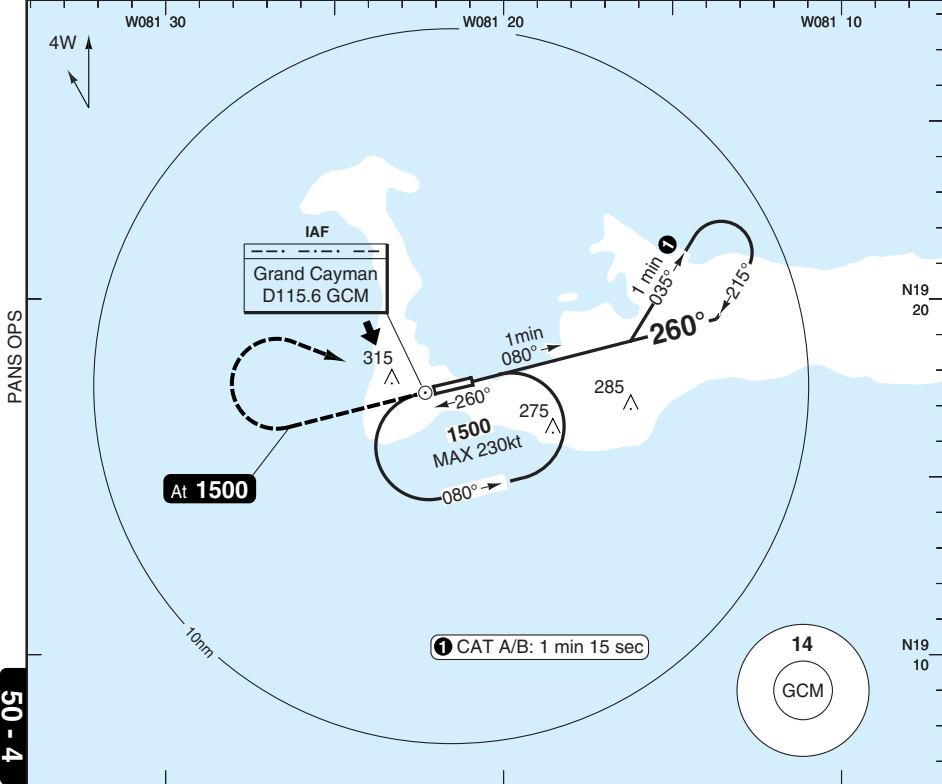
THIS CHART IS A PART OF NAVIGRAPH NDAC AND IS INTENDED FOR FLIGHT SIMULATION USE ONLY

VOR RWY 26

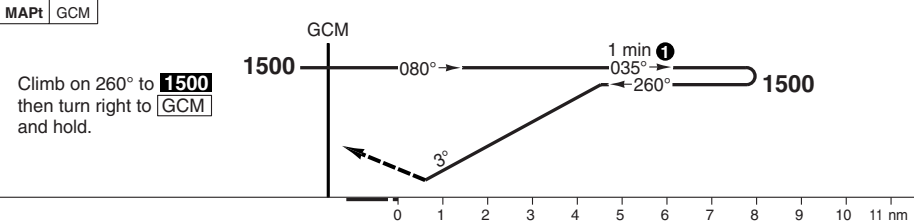
Owen Roberts INTL GRAND CAYMAN

Cayman APP 120.2	Owen Roberts TWR 118.0 121.9	ATIS 132.35
----------------------------	--------------------------------------------------	-----------------------

VOR 115.6 GCM	FAT 260°	DTHR Elev 5	AD Elev 8	TL 180	TA 17000
----------------------	-----------------	--------------------	------------------	---------------	-----------------



50 - 4



Climb on 260° to **1500**
then turn right to **GCM**
and hold.

ACFT	VOR	VOR ^a	Circling	Circling ^a	^a Non CDFA	DME GCM	3.0° ALT	LDA 2014x46 6608x151ft P 3° (54), REIL
A	560 (552) 2500m	560 (552) 2700m	610 (602) 2.5km	610 (602) 2.7km		5.9	1500	
B			710 (702) 2.5km	710 (702) 2.9km		5	1220	
C		560 (552) 2900m	710 (702) 3.6km	710 (702) 3.6km		4	900	
D			710 (702) 3.6km	710 (702) 3.6km		2.9	520	
GS	80	100	120	140	160			
ROD 3.0°	430	540	650	760	860			

© Navtech - mwcr04iap00

NALS

Change: New print.

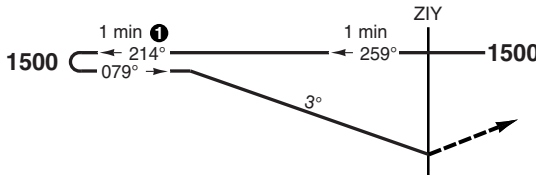
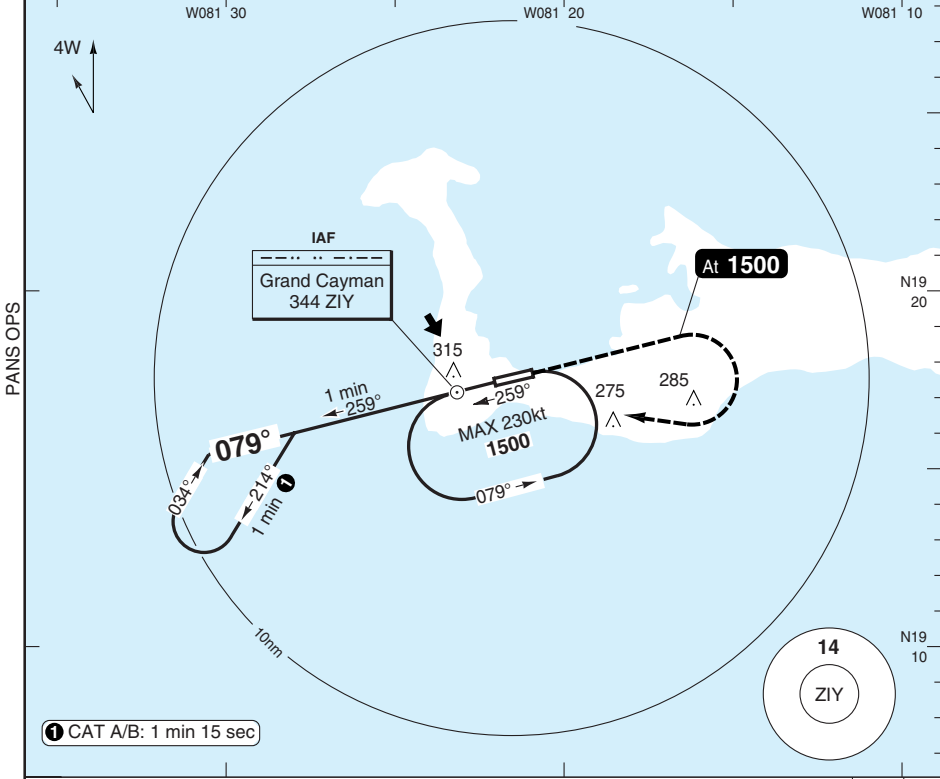
THIS CHART IS A PART OF NAVIGRAPH NDAC AND IS INTENDED FOR FLIGHT SIMULATION USE ONLY

NDB RWY 08

Owen Roberts INTL GRAND CAYMAN

Cayman APP 120.2	Owen Roberts TWR 118.0 121.9	ATIS 132.35
----------------------------	--------------------------------------------------	-----------------------

NDB 344 ZIY	FAT 079°	THR Elev 8	AD Elev 8	TL 180	TA 17000
--------------------	-----------------	-------------------	------------------	---------------	-----------------



Climb on 079° to **1500**, then turn right to **ZIY** and hold.

nm 12	11	10	9	8	7	6	5	4	3	2	1	0
-------	----	----	---	---	---	---	---	---	---	---	---	---

ACFT	NDB	NDB ^a	Circling	Circling ^a
A	610 (602) 2600m	610 (602) 2800m	610 (602) 2.6km	610 (602) 2.8km
B		610 (602) 3000m	710 (702) 2.6km	710 (702) 3.0km
C			710 (702) 3.6km	710 (702) 3.6km
D				

^a Non CDFA

LDA 2136x46
7008x151ft
P 3° (52), REIL

G

BALS

600

© Navtech - mwcr05iap00

50 - 5

Change: New print.

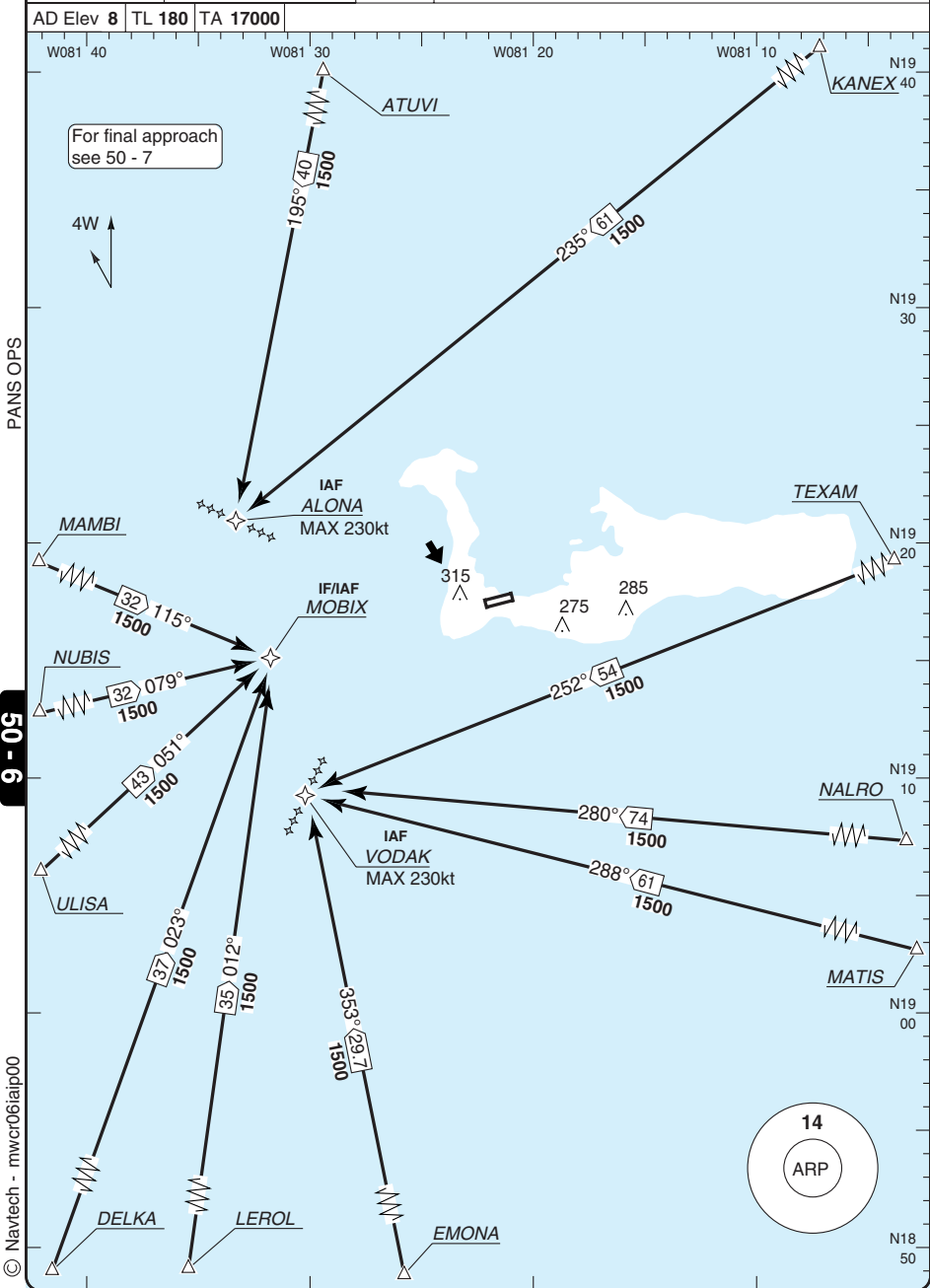
THIS CHART IS A PART OF NAVIGRAPH NDAC AND IS INTENDED FOR FLIGHT SIMULATION USE ONLY

INITIAL APCH RNAV (GNSS) RWY 08

GRAND CAYMAN

Cayman APP 120.2 Owen Roberts TWR 118.0 ATIS 132.35 Owen Roberts INTL

AD Elev 8 TL 180 TA 17000



© Navitech - mwcr06iap00

Change: Spec update.

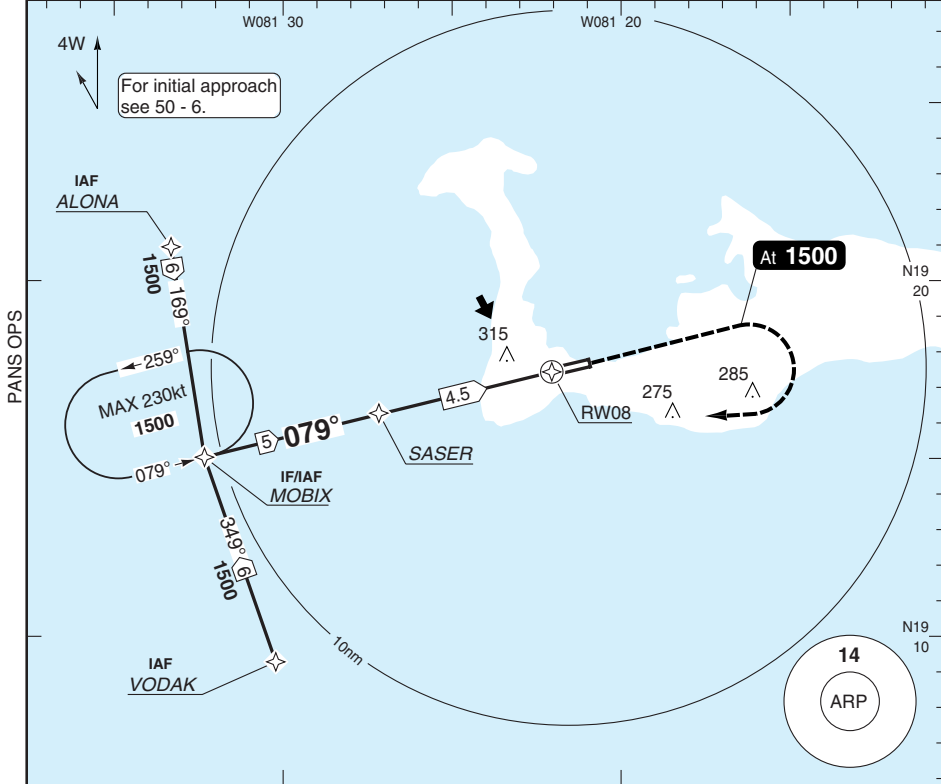
THIS CHART IS A PART OF NAVIGRAPH NDAC AND IS INTENDED FOR FLIGHT SIMULATION USE ONLY

FINAL APCH RNAV (GNSS) RWY 08

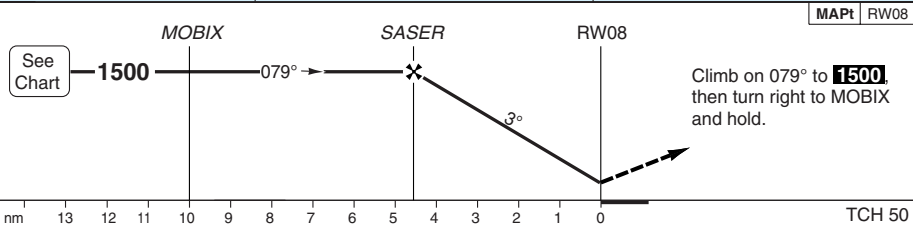
GRAND CAYMAN

Cayman APP 120.2	Owen Roberts TWR 118.0 121.9	ATIS 132.35	1 Owen Roberts INTL
----------------------------	--------------------------------------------------	-----------------------	----------------------------

RNAV	FAT 079°	THR Elev 8	AD Elev 8	TL 180	TA 17000
------	-----------------	-------------------	------------------	---------------	-----------------



50 - 7



ACFT	LNAV	Circling
A	530 (522)	610 (602) 1.5km
B	1500m	610 (602) 1.6km
C	530 (522)	710 (702) 2.4km
D	2200m	710 (702) 3.6km

THR	3° ALT	LDA 2136x46 7008x151ft P 3° (52), REIL				
4.5	1500	<table border="1"> <tr><td>G</td></tr> <tr><td>.....</td></tr> <tr><td>BALS</td></tr> <tr><td>600</td></tr> </table>	G	BALS	600
G						
.....						
BALS						
600						
4	1340					
3	1020					
2	700					

GS	80	100	120	140	160
ROD 3°	420	530	640	740	850

© Navtech - mwcr07iap00

Change: Spec update.

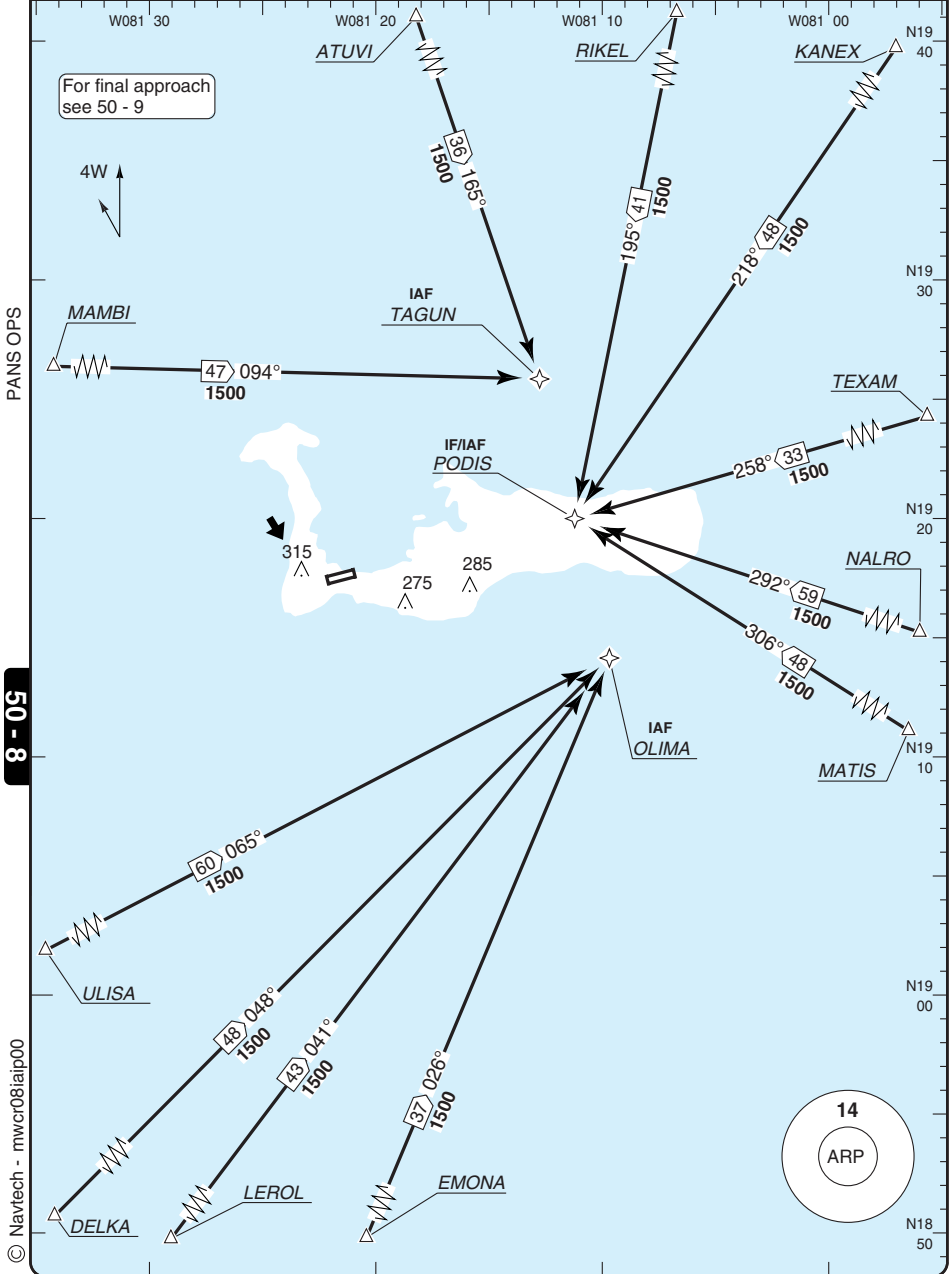
THIS CHART IS A PART OF NAVIGRAPH NDAC AND IS INTENDED FOR FLIGHT SIMULATION USE ONLY

INITIAL APCH RNAV (GNSS) RWY 26

GRAND CAYMAN

Cayman APP 120.2	Owen Roberts TWR 118.0 121.9	ATIS 132.35	① Owen Roberts INTL
---------------------	------------------------------------	----------------	---------------------

AD Elev 8 TL 180 TA 17000



Change: Spec update.

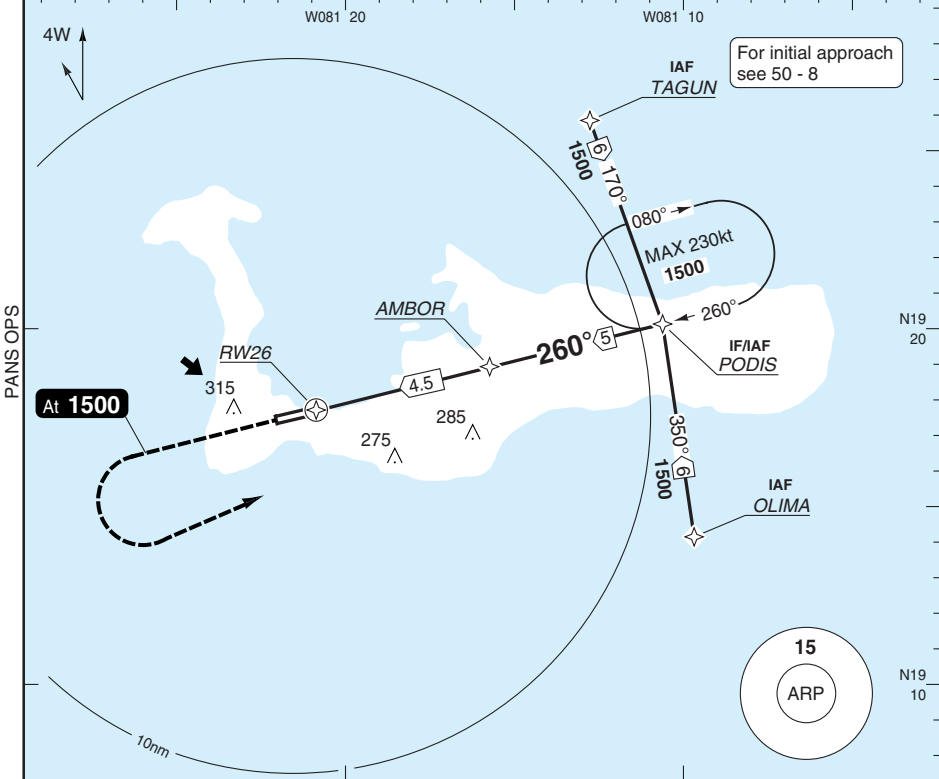
THIS CHART IS A PART OF NAVIGRAPH NDAC AND IS INTENDED FOR FLIGHT SIMULATION USE ONLY

FINAL APCH RNAV (GNSS) RWY 26

GRAND CAYMAN

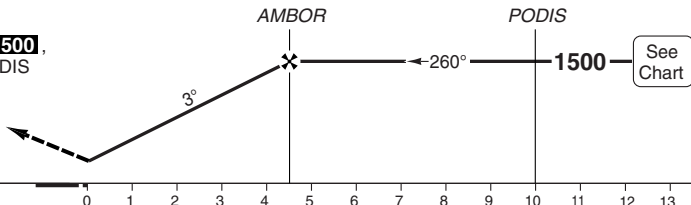
Cayman APP 120.2 Owen Roberts TWR 118.0 121.9 ATIS 132.35 Owen Roberts INTL

RNAV FAT 260° DTHR Elev 5 AD Elev 8 TL 180 TA 17000



MAPt RW26

Climb on 260° to **1500**, then turn left to PODIS and hold.



ACFT	LNAV	Circling
A	390 (382)	610 (602) 1.5km
B	1500m	610 (602) 1.6km
C	390 (382)	710 (702) 2.4km
D	1800m	710 (702) 3.6km

THR	3° ALT	LDA 2014x46
26	1500	6608x151ft
4.5	1340	P 3° (54), REIL
4	1020	
3	700	
2		

GS	80	100	120	140	160
ROD 3°	420	530	640	740	850

NALS

© Navtech - mwcr09iap00

Change: Spec update.

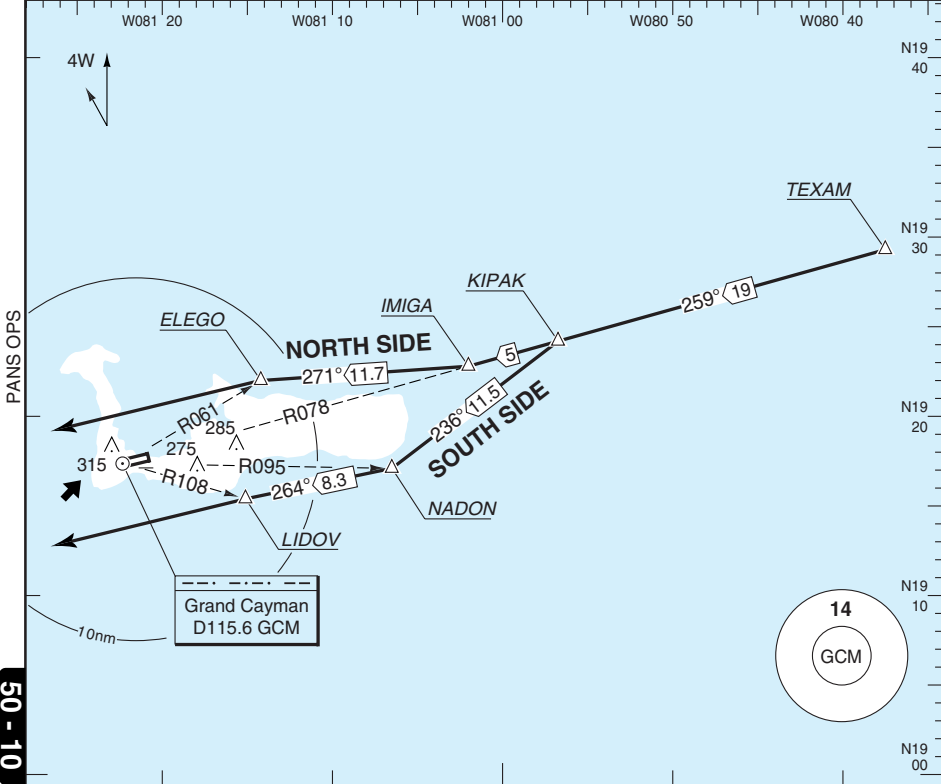
THIS CHART IS A PART OF NAVIGRAPH NDAC AND IS INTENDED FOR FLIGHT SIMULATION USE ONLY

VISUAL RWY 08

Owen Roberts INTL GRAND CAYMAN

Cayman APP 120.2	Owen Roberts TWR 118.0 121.9	ATIS 132.35
----------------------------	--------------------------------------------------	-----------------------

VOR 115.6 GCM	FAT 080°	THR Elev 8	AD Elev 8	TL 180	TA 17000
---------------	----------	------------	-----------	--------	----------



50 - 10

NORTH SIDE VISUAL APPROACH

Via GCM R078 inbound to IMIGA, then turn right 271° to ELEGO, then join left downwind RWY08.

With RVAV:

Via GCM R078 inbound to IMIGA, then turn right direct ELEGO, then join left downwind RWY 08.

SOUTH SIDE VISUAL APPROACH

Via GCM R078 inbound to KIPAK, then turn left 236° to NADON, then turn right 264° to LIDOV, then join right downwind RWY08.

With RNAV:

Via GCM R078 inbound to KIPAK, then turn left direct NADON, then turn right direct LIDOV, then join right downwind RWY08R.

JAR-OPS Minima

Owen Roberts INTL GRAND CAYMAN

The following Minima is for Public Transport aircraft and conforms to JAR-OPS1 regulations.

STRAIGHT-IN APPROACH		C				D			
R/W	Procedure	DA/ MDA QNH ft	DH/ MDH QFE ft	RVR m	RVR No ALS m	DA/ MDA QNH ft	DH/ MDH QFE ft	RVR m	RVR No ALS m
08	VOR/DME (1)	520	520	1800	2000	520	520	2000	2000
08	VOR (1)	560	560	1800	2000	560	560	2000	2000
08	NDB (1)	610	610	1800	2000	610	610	2000	2000
08	RNAV (LNAV)(1)	530	530	1800	2000	530	530	2000	2000
26	VOR/DME (1)	520	520	2000	N/A	520	520	2000	N/A
26	VOR (1)	560	560	2000	N/A	560	560	2000	N/A
26	RNAV (LNAV)(1)	390	390	1800	N/A	390	390	2000	N/A

Notes:

(1) Procedure based on aerodrome elevation.

CIRCLING		C			D		
R/W	Procedure	MDA QNH ft	MDH QFE ft	Vis m	MDA QNH ft	MDH QFE ft	Vis m
All procedures		710	710	2400	710	710	3600

Notes:

TAKE-OFF		C		D	
Runway	Facilities	RVR	Vis	RVR	Vis
08/26	REDL and/or RCL	400	-	400	-
08/26	Nil (Day only)	500	-	500	-

Notes:

JAR-OPS Minima

Owen Roberts INTL GRAND CAYMAN

The following Minima is for Public Transport aircraft and conforms to JAR-OPS1 regulations.

STRAIGHT-IN APPROACH		A				B			
R/W	Procedure	DA/ MDA QNH ft	DH/ MDH QFE ft	RVR m	RVR No ALS m	DA/ MDA QNH ft	DH/ MDH QFE ft	RVR m	RVR No ALS m
08	VOR/DME (1)	520	520	1500	1500	520	520	1500	1500
08	VOR (1)	560	560	1500	1500	560	560	1500	1500
08	NDB (1)	610	610	1500	1500	610	610	1500	1500
08	RNAV (LNAV)(1)	530	530	1500	1500	530	530	1500	1500
26	VOR/DME (1)	520	520	1500	N/A	520	520	1500	N/A
26	VOR (1)	560	560	1500	N/A	560	560	1500	N/A
26	RNAV (LNAV)(1)	390	390	1500	N/A	390	390	1500	N/A

Notes:

(1) Procedure based on aerodrome elevation.

CIRCLING		A			B		
R/W	Procedure	MDA QNH ft	MDH QFE ft	Vis m	MDA QNH ft	MDH QFE ft	Vis m
All procedures		610	610	1500	610	610	1600

Notes:

TAKE-OFF		A		B	
Runway	Facilities	RVR	Vis	RVR	Vis
08/26	REDL and/or RCL	400	-	400	-
08/26	Nil (Day only)	500	-	500	-

Notes: