

Airport information:

Country: Cuba

City: SANTIAGO DE CUBA

Coordinates: N 19° 58.2', W 075° 50.2'

Elevation: 249

Customs: Customs

Fuel: Jet A1

RFF: CAT 6

hours: 1100-0500

Runways:

Runway 01

Takeoff length: 1400, Landing length: 1400

Runway 10

Takeoff length: 3942, Landing length: 3642

Runway 19

Takeoff length: 1400, Landing length: 1400

Runway 28

Takeoff length: 3852, Landing length: 3552

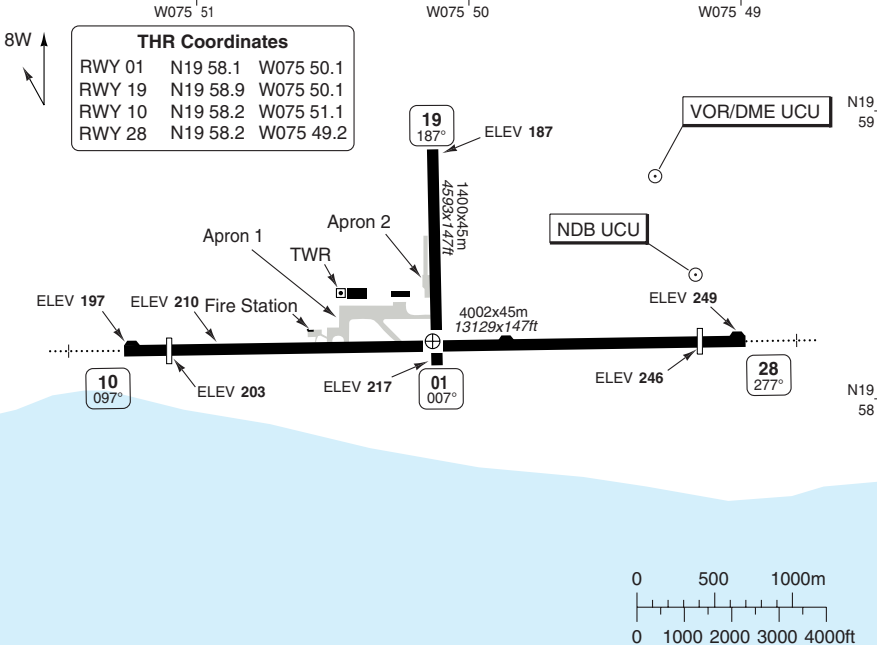
AERODROME

Antonio Maceo **SANTIAGO DE CUBA**

10 - 1

Maceo TWR
118.1

AD Elev 249 | ARP: N19 58.2 W075 50.1 | RFF: CAT 8 | AD HR: H24



RWY	Slope	TORA m/ft	LDA m/ft	ALS	REDL	Additional
01	- 0.7	1400 / 4593	1400 / 4593	-	-	-
19	+0.7	1400 / 4593	1400 / 4593	-	-	-
10	+0.4	3942 / 12933	3642 / 11948	L-E ①	L	P 3° (54)
28	- 0.4	3852 / 12637	3552 / 11653	L-E ①	L	P 3° (66)

① 420m.

STATE		TAKE OFF MINIMA	
RWY	Facilities	CEL/VIS A B C D	
10	RCL or RCL + REDL	320 ft / 1.6km	
28	RCL or RCL + REDL	660 ft / 2.6km	

AERODROME Parking

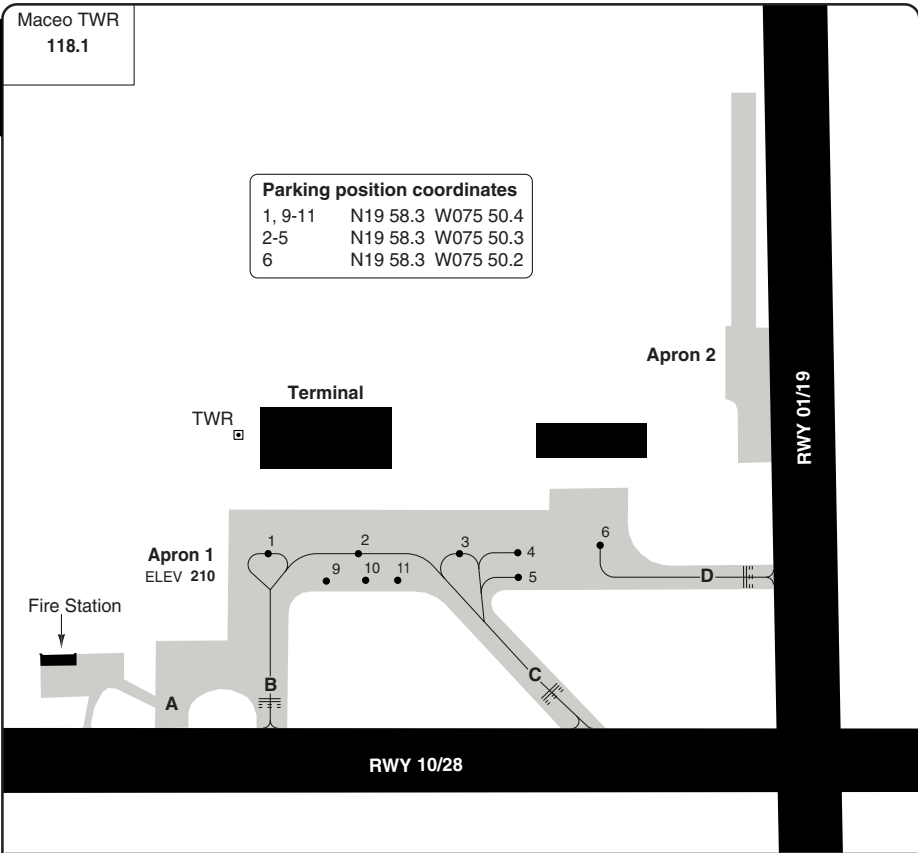
Antonio Maceo **SANTIAGO DE CUBA**

10 - 2

Maceo TWR
118.1

Parking position coordinates

1, 9-11	N19 58.3 W075 50.4
2-5	N19 58.3 W075 50.3
6	N19 58.3 W075 50.2



GENERAL INFORMATION

- 1. AD RESTRICTION**
AD closed for No Radio (NORDO) ACFT.
- 2. WARNING**
 - 2.1 Birds in vicinity of AD.
 - 2.2 Limited visibility from TWR for ACFT operating on RWY 01/19.
- 3. TWY RESTRICTION**
All heavy ACFT parking at stand 1 are prohibited to taxi by TWY B to RWY 10/28.

- 4. TAXI**
 - 4.1 180° turns on RWY only allowed at turning areas placed at THR RWY 10/28.
 - 4.2 Only ACFT with MTOW 24T are authorised to make 180° turns on RWY 10/28 between intersection with RWY 01/19 and RWY THR 28.

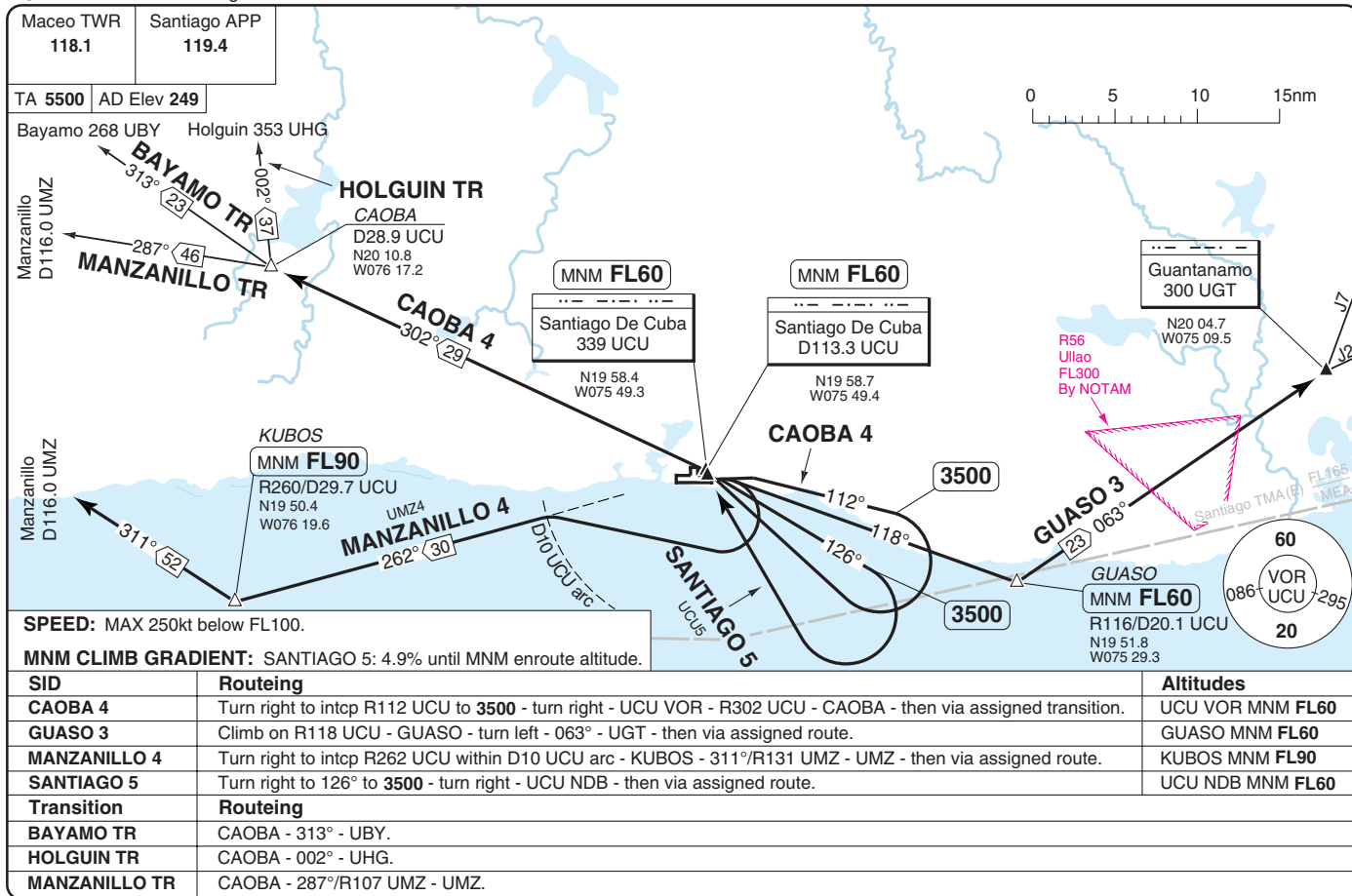
© Navitech - mucu02laorg0

Change: New spec.

THIS CHART IS A PART OF NAVIGRAPH NDAC AND IS INTENDED FOR FLIGHT SIMULATION USE ONLY

Change: New spec.

© Navtech - mucu01daorg



SPEED: MAX 250kt below FL100.

MNM CLIMB GRADIENT: SANTIAGO 5: 4.9% until MNM enroute altitude.

SID	Routing	Altitudes
CAOBA 4	Turn right to intop R112 UCU to 3500 - turn right - UCU VOR - R302 UCU - CAOBA - then via assigned transition.	UCU VOR MNM FL60
GUASO 3	Climb on R118 UCU - GUASO - turn left - 063° - UGT - then via assigned route.	GUASO MNM FL60
MANZANILLO 4	Turn right to intop R262 UCU within D10 UCU arc - KUBOS - 311°/R131 UMZ - UMZ - then via assigned route.	KUBOS MNM FL90
SANTIAGO 5	Turn right to 126° to 3500 - turn right - UCU NDB - then via assigned route.	UCU NDB MNM FL60
Transition	Routeing	
BAYAMO TR	CAOBA - 313° - UBY.	
HOLGUIN TR	CAOBA - 002° - UHG.	
MANZANILLO TR	CAOBA - 287°/R107 UMZ - UMZ.	

SID Rwy 10

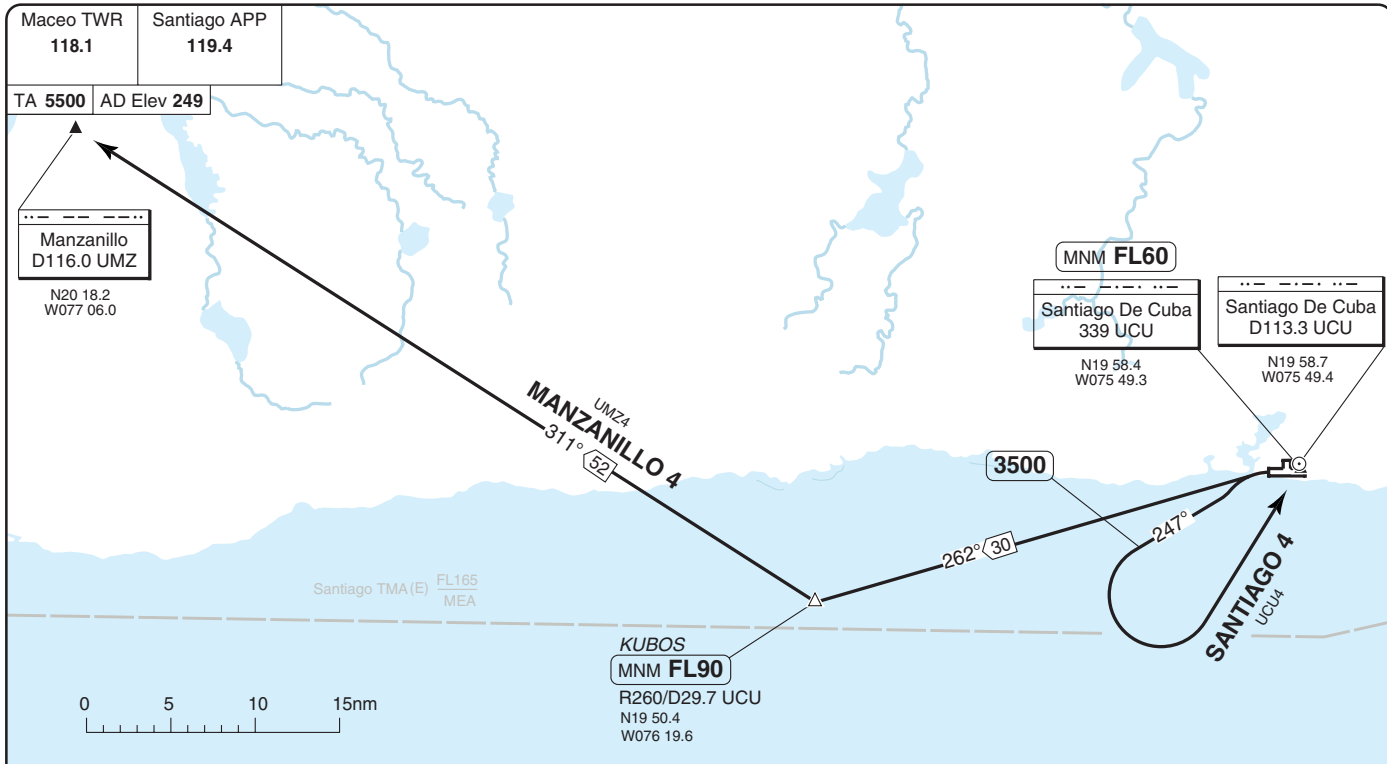
30 - 1 19 APR 11
Antonio Maceo SANTIAGO DE CUBA
Cuba - MUCU / SCU

30 - 2 | 19 APR 11

Cuba - MUCU / SCU

SID RWY 28

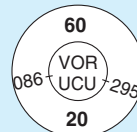
Antonio Maceo SANTIAGO DE CUBA



SPEED: MAX 250kt below FL100.

MNM CLIMB GRADIENT: SANTIAGO 4: 4.9% until MNM enroute altitude.

SID	Routing	Altitudes
MANZANILLO 4	Turn left to intcp R262 UCU - KUBOS - 311°/R131 UMZ - UMZ - then via assigned route.	KUBOS MNM FL90
SANTIAGO 4	Turn left to 247° to 3500 - turn left - UCU NDB - then via assigned route.	UCU NDB MNM FL60



30 - 2

© Navtech - mucu02daorgl

Change: New spec.

THIS CHART IS A PART OF NAVIGRAPH NDAC AND IS INTENDED FOR FLIGHT SIMULATION USE ONLY

© Navtech - mucu01aaorg0

Santiago APP 119.4	Maceo TWR 118.1
------------------------------	---------------------------

SPEED: MAX 250kt below FL100.

TL ATC AD Elev **249**

FL By ATC

Manzanillo
D116.0 UMZ

N20 18.2
W077 06.0

Sierra Maestra
MUMZ



Carlos Manuel de Cespedes
MUBY

MANZANILLO 3
UMZ3
52 130°

Santiago De Cuba
D113.3 UCU

N19 58.7
W075 49.4

Expect CLR
to RWY 10

Santiago TMA (E) FL165
MEA

KUBOS
D29.7 UCU
N19 50.4
W076 19.6



STAR RWY 10

40 - 1 19 APR 11
Antonio Maceo

SANTIAGO DE CUBA
Cuba - MUCU / SCU

THIS CHART IS A PART OF NAVIGRAPH NDAC AND IS INTENDED FOR FLIGHT SIMULATION USE ONLY

Change: New spec.

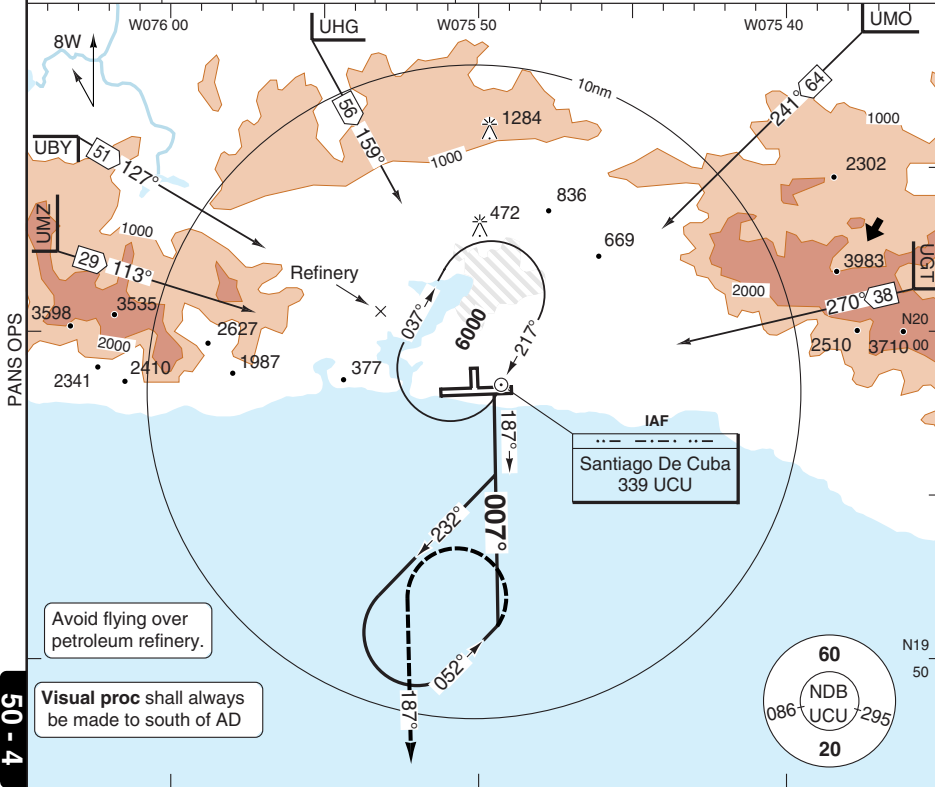
Reverse side blank

NDB 007 CIRCLING

Antonio Maceo **SANTIAGO DE CUBA**

Santiago APP 119.4	Maceo TWR 118.1
------------------------------	---------------------------

NDB 339 UCU	FAT 007°	AD Elev 249	TL ATC	TA 5500
--------------------	-----------------	--------------------	---------------	----------------

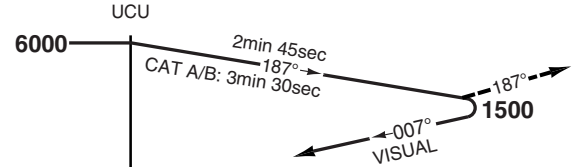


50 - 4

Avoid flying over petroleum refinery.

Visual proc shall always be made to south of AD

If no visual ground reference is established immediately after procedure, keep turning left to 187° and climbing to **6000**, return to NDB [UCU] and hold.



0 1 2 3 4 5 6 7 8 9 10 11 12 13 14 15 nm

ACFT	NDB Circling a	a South of AD.
A	860 (611) 3.7km	
B		
C	1050 (801) 4.6km	
D		

STATE

Change: New spec.

JAR-OPS Minima

Antonio Maceo INTL

SANTIAGO DE CUBA

The following Minima is for Public Transport aircraft and conforms to JAR-OPS1 regulations.

STRAIGHT-IN APPROACH		C				D			
R/W	Procedure	DA/ MDA QNH ft	DH/ MDH QFE ft	RVR m	RVR No ALS m	DA/ MDA QNH ft	DH/ MDH QFE ft	RVR m	RVR No ALS m
10	ILS	520	320	1600	1600	520	320	1600	1600
10	LOC/DME	1020	820	4400	4400	1020	820	4400	4400
10	VOR/DME	870	670	2400	2400	870	670	2400	2400
28	VOR/DME	900	660	2600	2600	900	660	2600	2600

Notes:

CIRCLING		C			D		
R/W	Procedure	MDA QNH ft	MDH QFE ft	Vis m	MDA QNH ft	MDH QFE ft	Vis m
-	CIRC NDB (1)	1050	810	4600	1050	810	4600
10	ILS, LOC/DME (1)	1020	780	4600	1020	780	4600
10	VOR/DME (1)	1050	810	4600	1050	810	4600
28	VOR/DME (1)	1050	810	4600	1050	810	4600

Notes:

(1) Circling only authorised south of aerodrome.

TAKE-OFF		C		D	
Runway	Facilities	RVR	Vis	RVR	Vis
10 (1)		-	1600	-	1600
28 (2)		-	2600	-	2600

Notes:

(1) Ceiling 320ft

(2) Ceiling 660ft

JAR-OPS Minima

Antonio Maceo INTL

SANTIAGO DE CUBA

The following Minima is for Public Transport aircraft and conforms to JAR-OPS1 regulations.

STRAIGHT-IN APPROACH		A				B			
R/W	Procedure	DA/ MDA QNH ft	DH/ MDH QFE ft	RVR m	RVR No ALS m	DA/ MDA QNH ft	DH/ MDH QFE ft	RVR m	RVR No ALS m
10	ILS	520	320	1600	1600	520	320	1600	1600
10	LOC/DME	1020	820	4400	4400	1020	820	4400	4400
10	VOR/DME	870	670	2400	2400	870	670	2400	2400
28	VOR/DME	900	660	2600	2600	900	660	2600	2600

Notes:

CIRCLING		A			B		
R/W	Procedure	MDA QNH ft	MDH QFE ft	Vis m	MDA QNH ft	MDH QFE ft	Vis m
-	CIRC NDB (1)	860	620	3700	860	620	3700
10	ILS, LOC/DME (1)	1020	780	4600	1020	780	4600
10	VOR/DME (1)	870	630	3700	870	630	3700
28	VOR/DME (1)	1050	810	4600	1050	810	4600

Notes:

(1) Circling only authorised south of aerodrome.

TAKE-OFF		A		B	
Runway	Facilities	RVR	Vis	RVR	Vis
10 (1)		-	1600	-	1600
28 (2)		-	2600	-	2600

Notes:

(1) Ceiling 320ft

(2) Ceiling 660ft