

Airport information:

Country: Macedonia

City: SKOPJE

Coordinates: N 41° 57.7', E021 37.3

Elevation: 781

Customs: Customs

Fuel: JP1, 100

RFF: CAT 7

hours: AD 0430-2130

Runways:

Runway 16

Takeoff length: 2450, Landing length: 2450

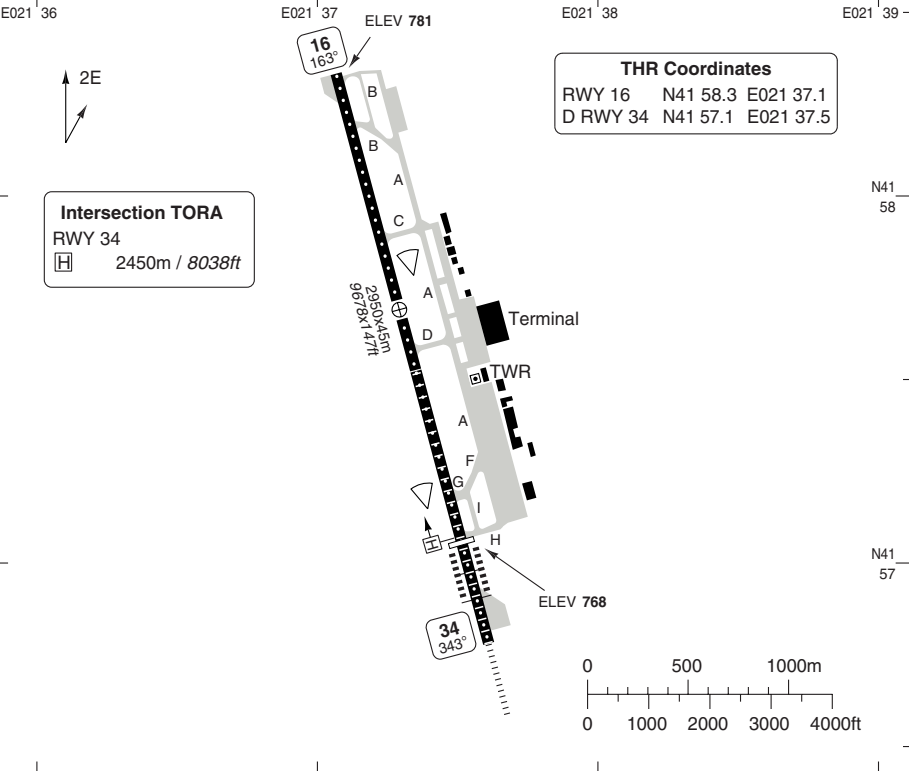
Runway 34

Takeoff length: 2950, Landing length: 2450

AERODROME

Skopje TWR 118.5	RAD 120.3	ATIS 130.125
----------------------------	---------------------	------------------------

AD Elev **781** | ARP: N41 57.7 E021 37.3 | RFF: CAT 7 | AD HR: ①



RWY	Slope	TORA m/ft	LDA m/ft	ALS	REDL	RCLL	Additional
16	-0.2	2450 / 8038	2450 / 8038	-	H	15m	-
34	+0.2	2950 / 9678	2450 / 8038	H-B	H	15m	P 3.3°L/R

① WIN 0430 - 2130, SUM 0315 - 2030

EU OPS		TAKE OFF MINIMA			
RWY	Facilities	RVR			
		A	B	C	D
16/34	RCL (day only) or RCL + REDL	400m			
	NIL (day only)	500m			

© Navtech - lwsk01laorg0

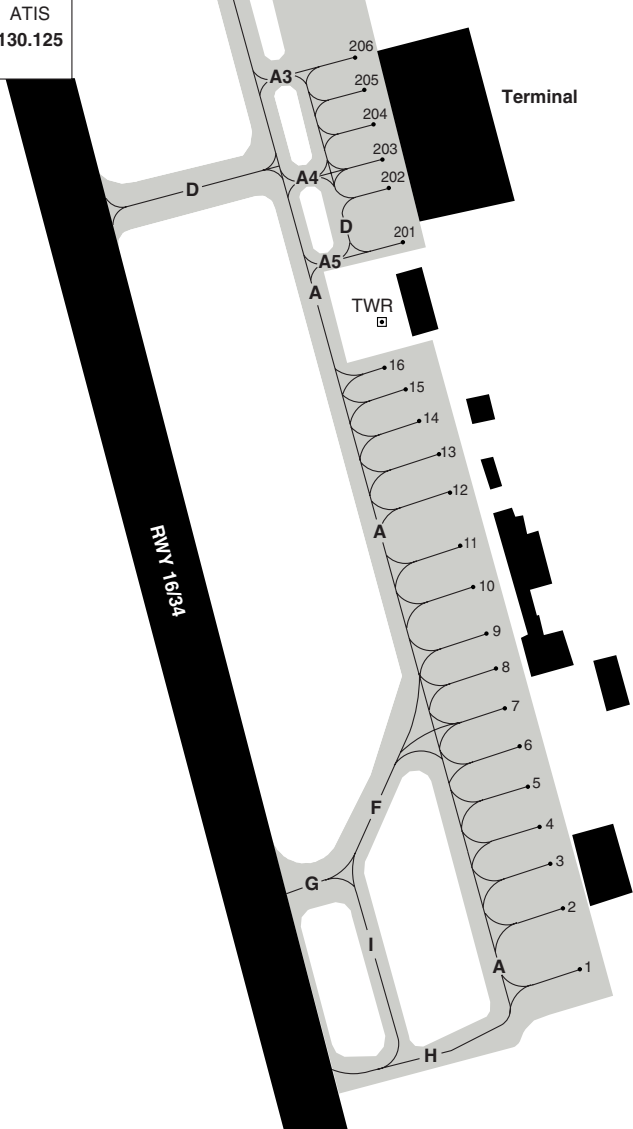
Change: RWY extended, TORA, TWY A1/A2 renamed

THIS CHART IS A PART OF NAVIGRAPH NDAC AND IS INTENDED FOR FLIGHT SIMULATION USE ONLY

AERODROME

10 - 2

Skopje TWR 118.5	RAD 120.3	ATIS 130.125
---------------------	--------------	-----------------



GENERAL INFORMATION

1. TWY RESTRICTION

TWY D width 12m/39ft.
 TWY J width 18m/59ft.

TWY A3/A4/J MAX wingspan 36m/118ft.
 TWY A5 MAX wingspan 65m/213ft.

2. TAXI ARR

RWY 16: Vacate RWY via TWY G.
 RWY 34: Vacate RWY via TWY B.

3. TAXI DEP

RWY 16: Taxi from APN to HLDG PSN on TWY B.
 RWY 34: Taxi from APN to HLDG PSN on TWY H.

© Navitech - lwsk02laorg0

Change: TWY restriction

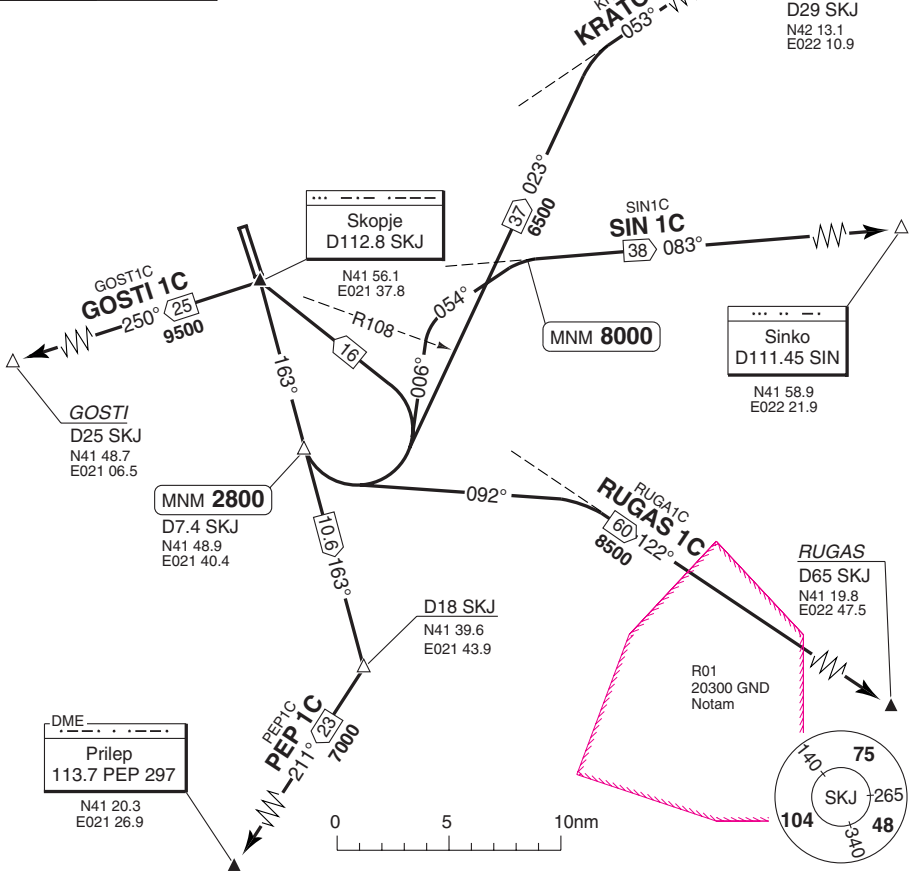
THIS CHART IS A PART OF NAVIGRAPH NDAC AND IS INTENDED FOR FLIGHT SIMULATION USE ONLY

SID RWY 16

SKOPJE

Skopje TWR 118.5	APP 120.3	RAD 120.3	ATIS 130.125
---------------------	--------------	--------------	-----------------

TA 11000 AD Elev 781



SPEED: MAX 250kt below 10000.

INITIAL CLIMB: (Except PEP 1C)
Climb on 163° - at D7.4 SKJ turn left - follow SID.
Cross D7.4 SKJ MNM 2800.

SID	MNM CLIMB	Routeing	Altitudes
GOSTI 1C	3.9% to 2800	At SKJ turn left - R250 SKJ - GOSTI.	
KRATO 1C	3.9% to 2800	023° - R053 SKJ - KRATO. Flight via RAXAD: Cross RAXAD MNM FL160	
PEP 1C	3.9% to 2800	Climb on 163° - at D18 SKJ turn right - 211° to PEP - PEP	
RUGAS 1C	3.9% to 2800	092° - R122 SKJ - RUGAS	
SIN 1C	4.4% to 3500	006° - cross R108 SKJ - turn right - 054° - R083 SKJ - SIN. Flight via RAXAD: Cross RAXAD MNM FL160	Intercept R083 SKJ MNM 8000

© Navitech - lwsk01daorgo

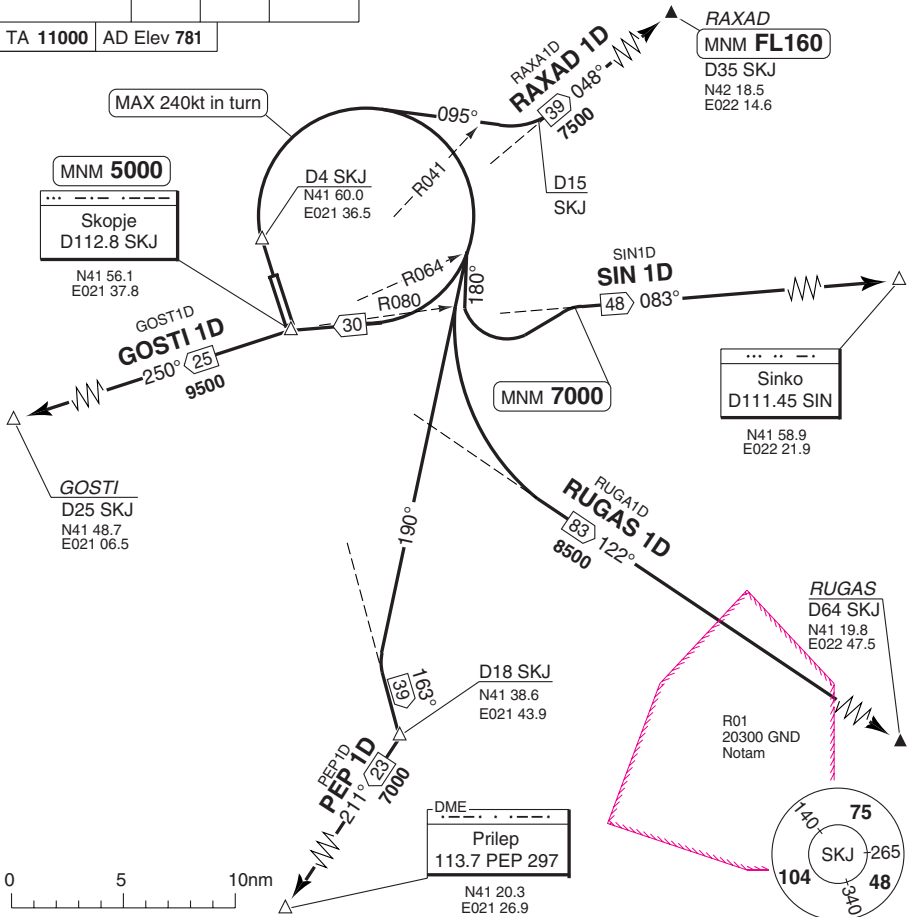
Change: Country name, COM

THIS CHART IS A PART OF NAVIGRAPH NDAC AND IS INTENDED FOR FLIGHT SIMULATION USE ONLY

SID RWY 34

Skopje TWR 118.5	APP 120.3	RAD 120.3	ATIS 130.125
----------------------------	---------------------	---------------------	------------------------

TA **11000** AD Elev **781**



SPEED: MAX 250kt below 10000.

INITIAL CLIMB: Climb on 343° - at D4 SKJ turn right (MAX 240kt in turn) - follow SID.

SID	MNM Climb	Routeing	Altitudes
GOSTI 1D	7% to 2200	SKJ - R250 SKJ - GOSTI	SKJ MNM 5000
PEP 1D	7% to 2200	190° - R163 SKJ - at D18 SKJ turn right - 211° to PEP - PEP	
RAXAD 1D	7.5% to 2100	095° - at R041 SKJ turn left - R048 SKJ - RAXAD	RAXAD MNM FL160
RUGAS 1D	7% to 2200	190° - cross R080 SKJ - turn left - R122 SKJ - RUGAS	
SIN 1D	7.9% to 2200	180° - cross R064 SKJ - turn left - R083 SKJ - SIN Flight via RAXAD: Cross RAXAD MNM FL160	Intcp R083 SKJ MNM 7000

© Navitech - lwsk02daorgo

Change: Country name, COM

THIS CHART IS A PART OF NAVIGRAPH NDAC AND IS INTENDED FOR FLIGHT SIMULATION USE ONLY

© Navtech - lwsk01aaorg0

Skopje APP 120.3	RAD 120.3	TWR 118.5	ATIS 130.125
---------------------	--------------	--------------	-----------------

TL ATC AD Elev 781

SPEED
MAX 250kt below 10000ft.

SARAX
D35 SKJ
N42 05.8
E020 53.7

MNM **FL110**
D22 SKJ

SARA1B
SARAX 1B
35° 103°

TETO1B
TETOV 1B
29° 093°

TETOV
D29 SKJ
N41 58.6
E020 59.4

MNM **8000**
D10 SKJ

GOST1B
GOSTI 1B
25° 070°

GOSTI
D25 SKJ
N41 48.7
E021 06.5

MNM **9500**
D10 SKJ

GOSTI 1B
MNM **6200**
MNM **6000**
Skopje
D112.8 SKJ
N41 56.1
E021 37.8

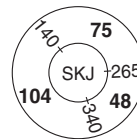
SIN1B
SINKO 1B
263° 33°

MNM **8000**
D25 SKJ

Sinko
D111.45 SIN
N41 58.9
E022 21.9

KRAT1B
KRATO 1B
233° 29°

KRATO
D29 SKJ
N42 13.1
E022 10.9



STAR RWY 34 from East, West

40 - 1 | 19 MAY 10

F.Y.R.O.M. - LWSK / SKP

SKOPJE

Change: Country name, COM
THIS CHART IS A PART OF NAVIGRAPH NDAC AND IS INTENDED FOR FLIGHT SIMULATION USE ONLY

STAR RWY 34 from South

SKOPJE

Skopje APP 120.3	RAD 120.3	TWR 118.5	ATIS 130.125
----------------------------	---------------------	---------------------	------------------------

TL ATC AD Elev 781

SPEED
MAX 250kt below 10000ft.

Skopje
D112.8 SKJ

N41 56.1
E021 37.8

MNM 7000
D20 SKJ
N41 37.2
E021 44.7

Prilep
DME 113.7 PEP 297

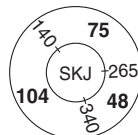
N41 20.3
E021 26.9

MNM 8000

N41 20.3
E021 55.4

RUGA1B
RUGAS 1B
268° 61

RUGAS
D65 SKJ
N41 19.8
E022 47.5

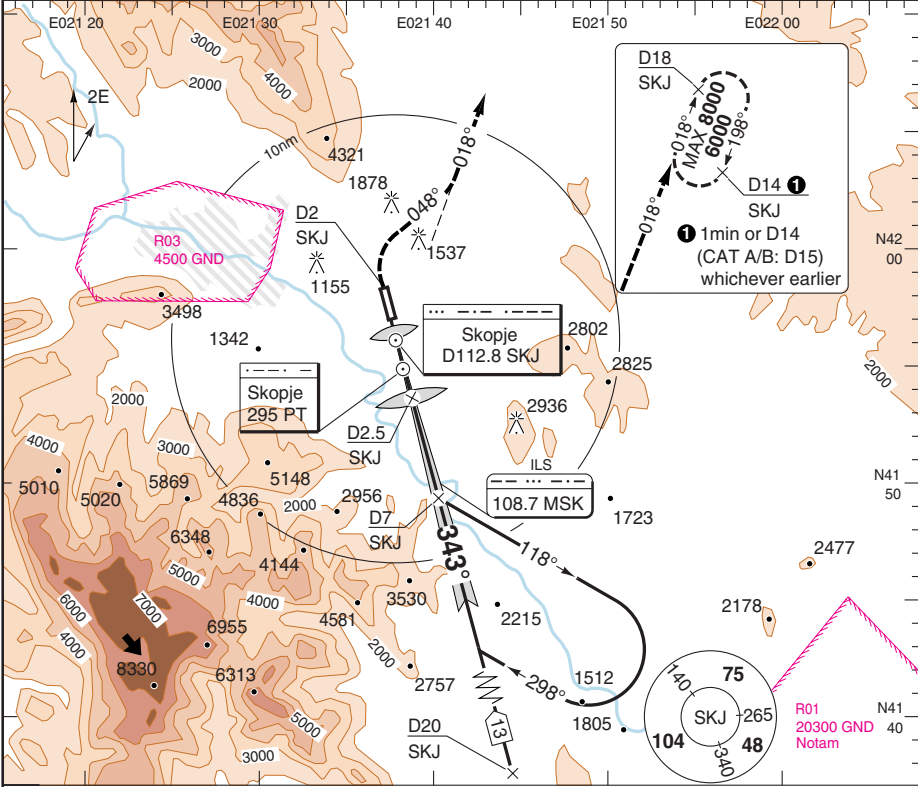


SKOPJE

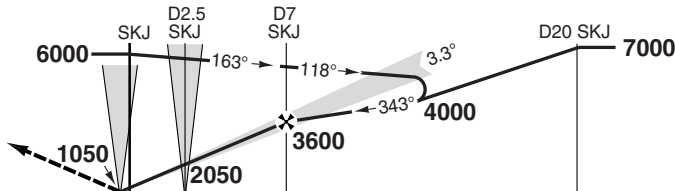
ILS RWY 34

Skopje APP 120.3	RAD 120.3	TWR 118.5	ATIS 130.125
---------------------	--------------	--------------	-----------------

ILS 108.7 MSK	FAT 343°	THR Elev 764	DTHR Elev 768	AD Elev 781	TL ATC	TA 11000
---------------	----------	--------------	---------------	-------------	--------	----------



Climb on 343°.
At D2 [SKJ] turn right to 048°.
Intercept R018 [SKJ] to D18 [SKJ], enter HP climbing to 6000.
MAX 200kt when entering HP.



TCH 50

ACFT	ILS 3.5% a	ILS 2.5% a	Circling b	a MISAP MNM Climb Gradient	LDA 2450x45 8038x147ft P 3.3° L/R
A	1170 (402) 1200m	1360 (592) 1500m	1400 (619) 1.5km	b Day only	
B	1180 (412) 1200m	1370 (602) 1500m	1900 (1119) 2.4km		
C	1190 (422) 1300m	1380 (612) 2100m	2200 (1419) 2.4km		
D	1200 (432) 1300m	1390 (622) 2200m	3000 (2219) 3.6km		

© Navtech - lwsk01aiap00

50 - 1

FALS

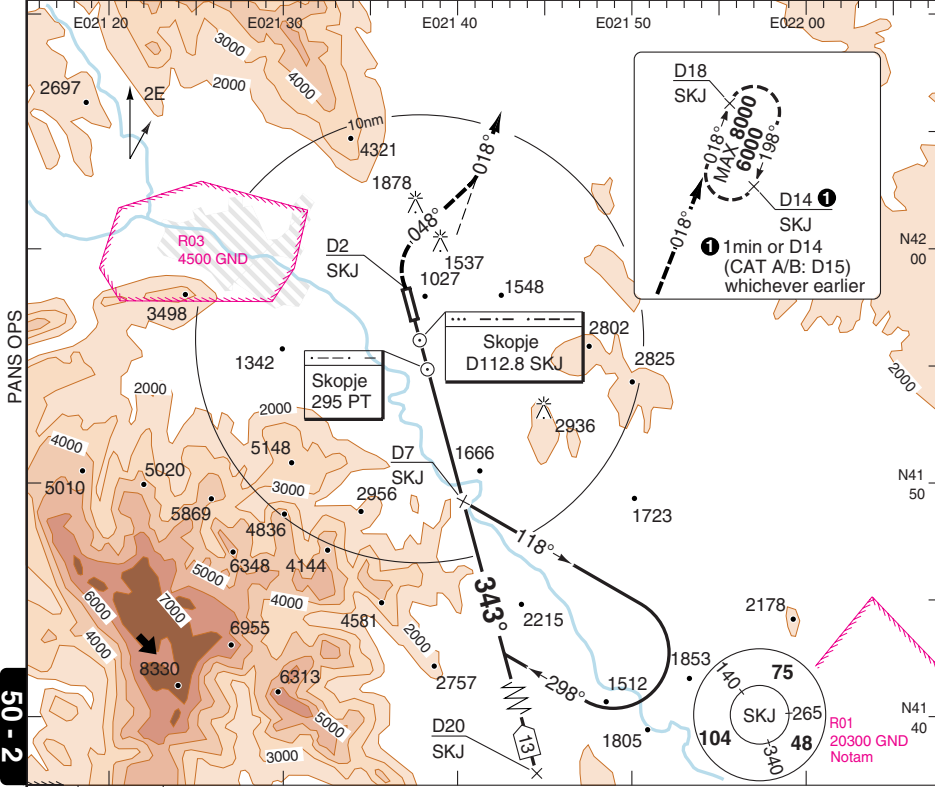
Change: THR elev, DTHR elev

THIS CHART IS A PART OF NAVIGRAPH NDAC AND IS INTENDED FOR FLIGHT SIMULATION USE ONLY

VOR RWY 34

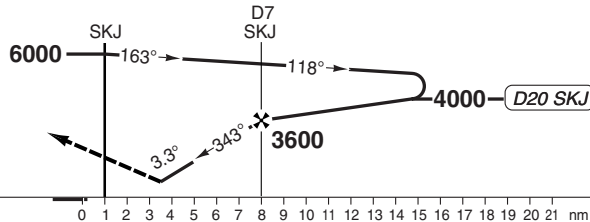
Skopje APP 120.3	RAD 120.3	TWR 118.5	ATIS 130.125
----------------------------	---------------------	---------------------	------------------------

VOR/DME 112.8 SKJ	FAT 343°	THR Elev 764	DTHR Elev 768	AD Elev 781	TL ATC	TA 11000
--------------------------	-----------------	---------------------	----------------------	--------------------	--------	-----------------



MAPt D2.62 SKJ

Climb on 343°.
 At D2 [SKJ]
 turn right to 048°.
 Intercept R018 [SKJ]
 to D18 [SKJ], enter
 HP climbing to **6000**.
 MAX 200kt when
 entering HP.



ACFT **VOR+DME** Note: Circling NA

A	
B	2090 (1313)
C	5000m
D	

DME SKJ	3.3° ALT	LDA 2450x45
8.2	4000	8038x147ft
6	3250	P 3.3° L/R
5	2910	
4	2560	
3	2210	
2.7	2090	

GS	80	100	120	140	160
ROD 3.3°	470	580	700	820	930

© Navtech - lwsk02iaip00

FALS

JAR-OPS Landing Minima

SKOPJE

The following Minima is for Public Transport aircraft and conforms to JAR-OPS1 regulations.

STRAIGHT-IN APPROACH		C				D			
R/W	Procedure	DA/ MDA QNH ft	DH/ MDH QFE ft	RVR m	RVR No ALS m	DA/ MDA QNH ft	DH/ MDH QFE ft	RVR m	RVR No ALS m
34	ILS (M/App 2.5%)	1380	620	800	1200	1390	630	800	1200
34	ILS (M/App 3.5%)	1190	430	800	1200	1200	440	800	1200
34	VOR/DME	2090	1320	1400	2000	2090	1320	1800	2000

Notes:

CIRCLING		C			D		
R/W	Procedure	MDA QNH ft	MDH QFE ft	Vis m	MDA QNH ft	MDH QFE ft	Vis m
34	ILS (HJ only)	2200	1420	2400	3000	2220	3600

Notes:

TAKE-OFF		C		D	
Runway	Facilities	RVR	Vis	RVR	Vis
16/34	REDL and/or RCL	400	-	400	-
16/34	Nil (Day only)	500	-	500	-

Notes:

JAR-OPS Landing Minima

SKOPJE

The following Minima is for Public Transport aircraft and conforms to JAR-OPS1 regulations.

STRAIGHT-IN APPROACH		A				B			
R/W	Procedure	DA/ MDA QNH ft	DH/ MDH QFE ft	RVR m	RVR No ALS m	DA/ MDA QNH ft	DH/ MDH QFE ft	RVR m	RVR No ALS m
34	ILS (M/App 2.5%)	1360	600	800	1200	1370	610	800	1200
34	ILS (M/App 3.5%)	1170	410	800	1200	1180	420	800	1200
34	VOR/DME	2090	1320	1200	1500	2090	1320	1400	1500

Notes:

CIRCLING		A			B		
R/W	Procedure	MDA QNH ft	MDH QFE ft	Vis m	MDA QNH ft	MDH QFE ft	Vis m
34	ILS (HJ only)	1400	620	1500	1900	1120	1600

Notes:

TAKE-OFF		A		B	
Runway	Facilities	RVR	Vis	RVR	Vis
16/34	REDL and/or RCL	400	-	400	-
16/34	Nil (Day only)	500	-	500	-

Notes: