

## Airport information:

Country: Romania

City: BUCURESTI BANEASA

Coordinates: N 44° 30.2', E026 06.2

Elevation: 299

Customs: Customs

Fuel: 100LL, Jet A1

RFF: CAT 7

hours: H24

## Runways:

Runway 07

Takeoff length: 3100, Landing length: 2960

Runway 25

Takeoff length: 3100, Landing length: 3100

WEF 05 APR 12

10 - 1 07 MAR 12

Romania - LRBS / BBU

# AERODROME

## Aurel Vlaicu BUCURESTI BANEASA

10 - 1

Baneasa GND  
129.95

TWR  
120.8

AD Elev 299

ARP: N44 30.2 E026 06.2

RFF: CAT 7

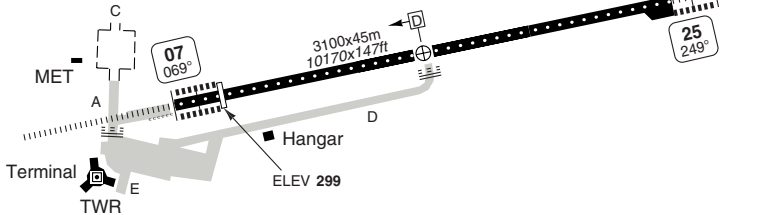
AD HR: H24

E026 05

E026 06

E026 07

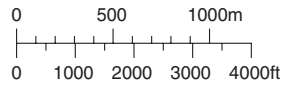
E026 08



THR Coordinates			
RWY 07	N44 30.0	E026 05.1	
RWY 25	N44 30.4	E026 07.3	

645  
✧

**Intersection TORA**  
RWY 25  
1650m / 5413ft



RWY	Slope	TORA m/ft	LDA m/ft	ALS	REDL	RCLL	Additional
07	-0.2	3100 / 10170	2960 / 9711	B-H	H	15m	P 3°
25	+0.2	3100 / 10170	3100 / 10170	B-H ①	H	15m	P 3°

① 660m

### EU OPS TAKE OFF MINIMA

RWY	Facilities	RVR				
		A	B	C	D	
07/25	RCLL + REDL			<b>LVTO</b>	200m	250m
	RCL (day only) or RCL + REDL			<b>LVTO</b>	250m	300m
	RCL (day only) or RCL + REDL				400m	400m
	NIL (day only)				500m	500m

© Navitech - lrbs01laorg0

Change: Apron, Holds

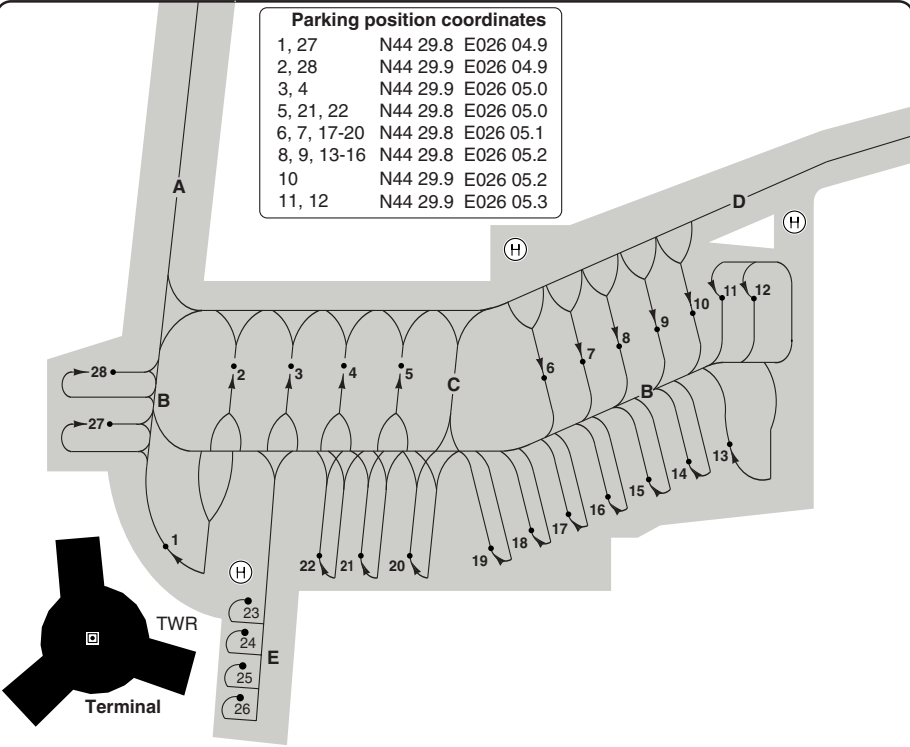
**THIS CHART IS A PART OF NAVIGRAPH NDAC AND IS INTENDED FOR FLIGHT SIMULATION USE ONLY**

AERODROME

Aurel Vlaicu BUCURESTI BANEASA

10 - 2

Parking position coordinates		
1, 27	N44 29.8	E026 04.9
2, 28	N44 29.9	E026 04.9
3, 4	N44 29.9	E026 05.0
5, 21, 22	N44 29.8	E026 05.0
6, 7, 17-20	N44 29.8	E026 05.1
8, 9, 13-16	N44 29.8	E026 05.2
10	N44 29.9	E026 05.2
11, 12	N44 29.9	E026 05.3



GENERAL INFORMATION

- 1. NIGHT FLIGHT RESTRICTION**
  - 1.1 Applicable between 22-06 LT.
  - 1.2 Planning and operation of ACFT with MTOW 50t or heavier are not permitted.
  - 1.3 Delays can operate until 2230.
- 2. NOISE ABATEMENT PROCEDURES**
  - 2.1 Engines test runs not permitted on stands.
  - 2.2 Reverse thrusts other than idle thrust shall only be used for safety reasons between 22-06 LT.
  - 2.3 Avoid use of APU 22-06.

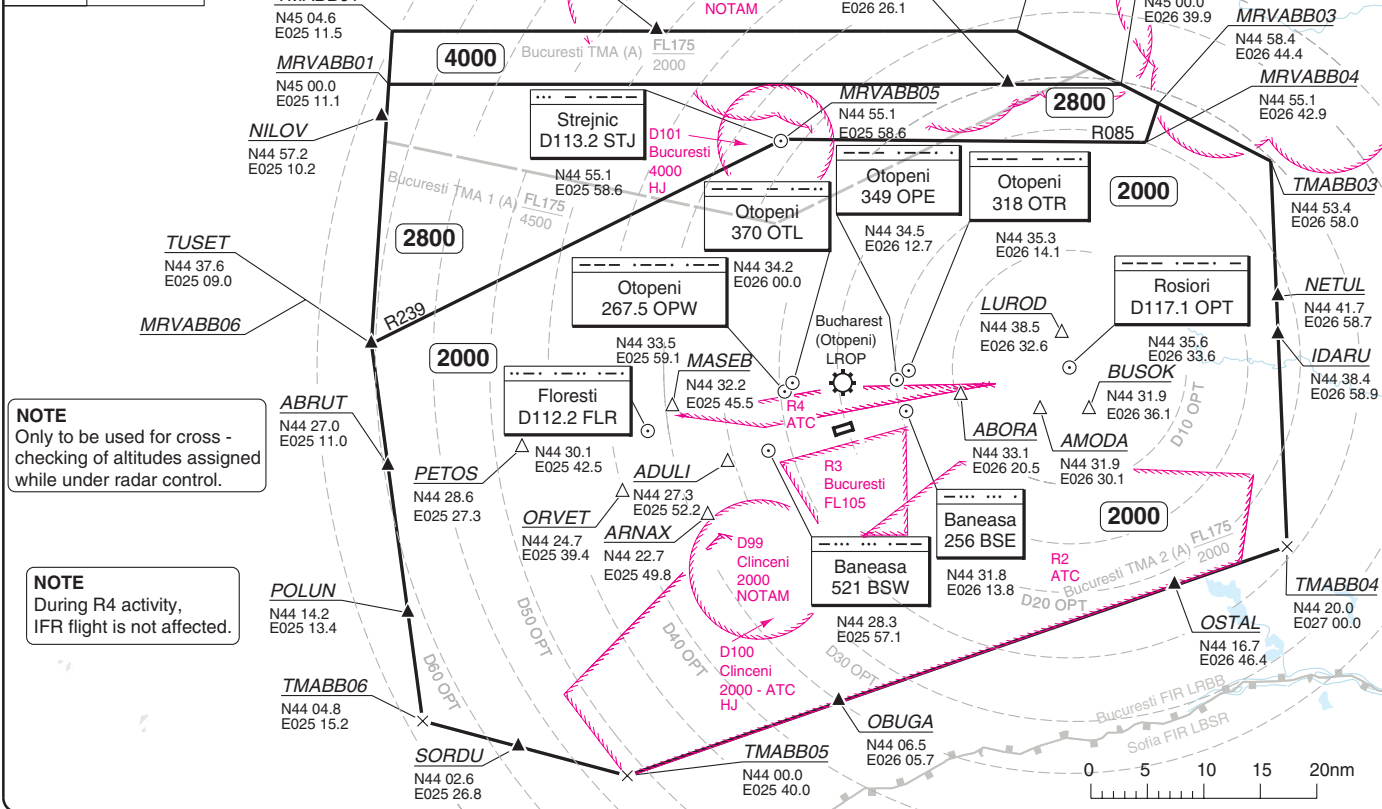
- 3. PREFERENTIAL RWY SYSTEM**
  - 22-06 LT TKOF: RWY 07
  - 22-06 LT LDG: RWY 25
- 4. TWY RESTRICTIONS**
  - TWY B, C, D: MAX wingspan less than 36m/118ft.
  - TWY E: MAX wingspan less than 14m/46ft.

© Navtech - lrbs02laorg0

Change: Apron, GEN 1.1, GEN 4, Stands

**THIS CHART IS A PART OF NAVIGRAPH NDAC AND IS INTENDED FOR FLIGHT SIMULATION USE ONLY**

Bucuresti APP <b>118.25</b> <b>120.6</b>	Baneasa TWR <b>120.8</b>	GND <b>129.95</b>
TL ATC	AD Elev 299	



**NOTE**  
Only to be used for cross -  
checking of altitudes assigned  
while under radar control.

**NOTE**  
During R4 activity,  
IFR flight is not affected.

# Radar Procedures

 Aurel Vlaicu **BUCURESTI BANEASA**

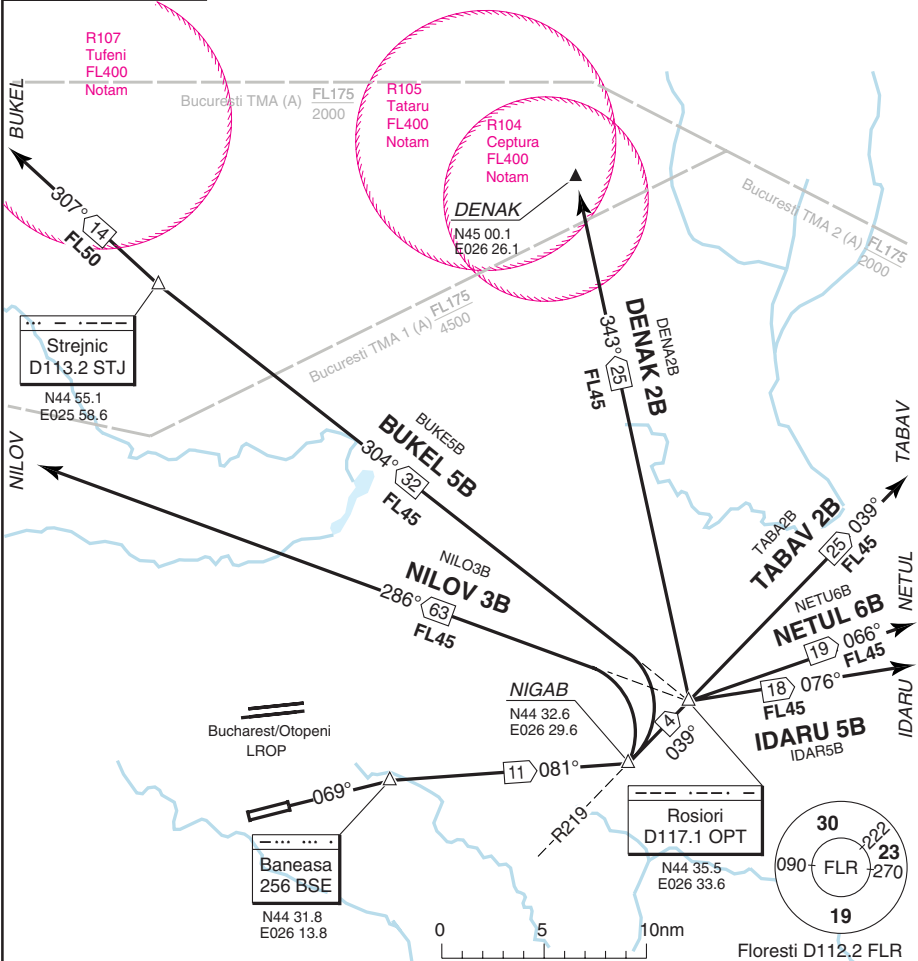
Bucuresti APP <b>118.25</b> <b>120.6</b>	Baneasa PAR <b>125.2</b>	TWR <b>120.8</b>	GND <b>129.95</b>	
<b>PAR RWY 07</b>				
ILS/DME <b>109.5 IBS</b>	FAT <b>070°</b>	DTHR Elev <b>299</b>	AD Elev <b>299</b>	TL <b>ATC</b> TA <b>4000</b>
ACFT	<b>PAR</b>			
<b>EU OPS</b>	A/B <b>610</b> <sup>(306)</sup> 700m <b>a</b>	Climb on 070° to <u>256 BSE</u> , turn right on HDG 106° for 1min 30sec (CAT A/B: 088°, 2min), turn left and proceed to <u>521 BSW</u> climbing to <b>2500</b> , turn left on HDG 196° for 1min (CAT A/B: 226° for 1min 30sec), turn right to ADULI.		
	C <b>620</b> <sup>(316)</sup> 700m			
	D <b>630</b> <sup>(325)</sup> 800m			
	<b>a</b> CAT A: <b>600</b> <sup>(296)</sup> 650m			
<b>PAR RWY 25</b>				
NDB <b>521 BSW</b>	FAT <b>250°</b>	THR Elev <b>282</b>		
ACFT	<b>PAR</b>			
<b>EU OPS</b>	A/B <b>530</b> <sup>(247)</sup> 550m <b>a</b>	Climb on 250° to <u>521 BSW</u> , turn left on HDG 196° for 1min (CAT A/B: 226°, 1min 30sec), turn right and proceed to <u>256 BSE</u> climbing to <b>2500</b> , turn right on HDG 106° for 1min 30sec (CAT A/B: 088°, 2min), turn left to ABORA.		
	C <b>540</b> <sup>(255)</sup> 600m			
	D <b>550</b> <sup>(266)</sup> 600m			
	<b>a</b> CAT A: <b>520</b> <sup>(235)</sup> 550m			

SID RWY 07 North, East

Aurel Vlaicu BUCURESTI BANEASA

Baneasa GND 129.95	TWR 120.8	Bucuresti APP 118.25 120.6
-----------------------	--------------	----------------------------------

TA 4000 AD Elev 299



30 - 1

SPEED: MAX 250kt below FL100.

SID	Routing
<b>INITIAL CLIMB</b>	Climb on 069° to BSE - R081 FLR - NIGAB - turn left - follow SID
<b>BUKEL 5B</b>	R304 STJ - STJ - R307 STJ - BUKEL. Not available for traffic to NEPOT.
<b>DENAK 2B</b>	039°/R219 OPT - OPT - turn left - R343 OPT - DENAK.
<b>IDARU 5B</b>	039°/R219 OPT - OPT - R076 OPT - IDARU.
<b>NETUL 6B</b>	039°/R219 OPT - OPT - R066 OPT - NETUL.
<b>NILOV 3B</b>	R286 OPT - NILOV. Not available for traffic to VELIP.
<b>TABAV 2B</b>	039°/R219 OPT - OPT - R039 OPT - TABAV.

© Navitech - lrbs01daorgo

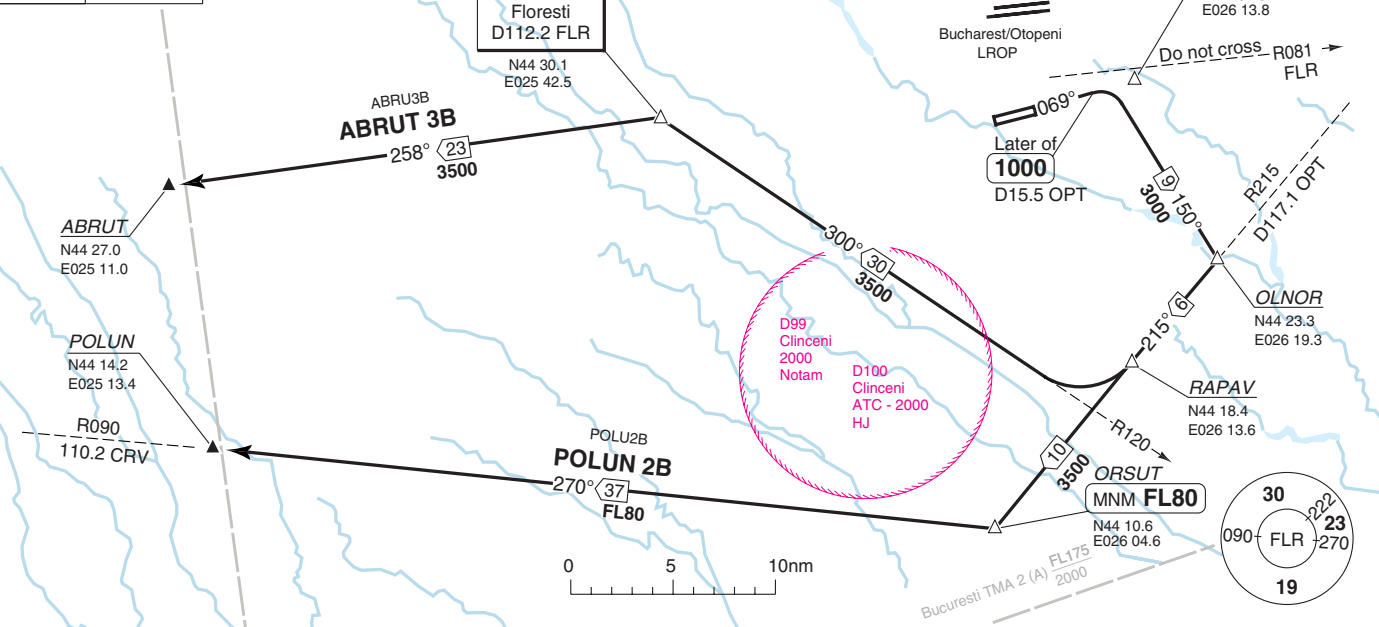
Change: Completely revised

**THIS CHART IS A PART OF NAVIGRAPH NDAC AND IS INTENDED FOR FLIGHT SIMULATION USE ONLY**

**SID Rwy 07 South, West** Aurel Vlaicu **BUCURESTI BANEASA**

Baneasa GND 129.95	TWR 120.8	Bucuresti APP 118.25 120.6
-----------------------	--------------	----------------------------------

TA 4000 AD Elev 299



**SPEED:** MAX 250kt below FL100.

**INITIAL CLIMB:** Climb on 069° to 1000 or D15.5 OPT whichever is later - turn right - R150 STJ - OLNOR - turn right - R215 OPT - follow SID.

SID	Routeing
<b>ABRUT 3B</b>	RAPAV - turn right - 300°/R120 FLR - FLR - R258 FLR - ABRUT.
<b>POLUN 2B</b>	ORSUT - turn right - 270°/R090 CRV - POLUN. Not available for traffic to MOPUG.

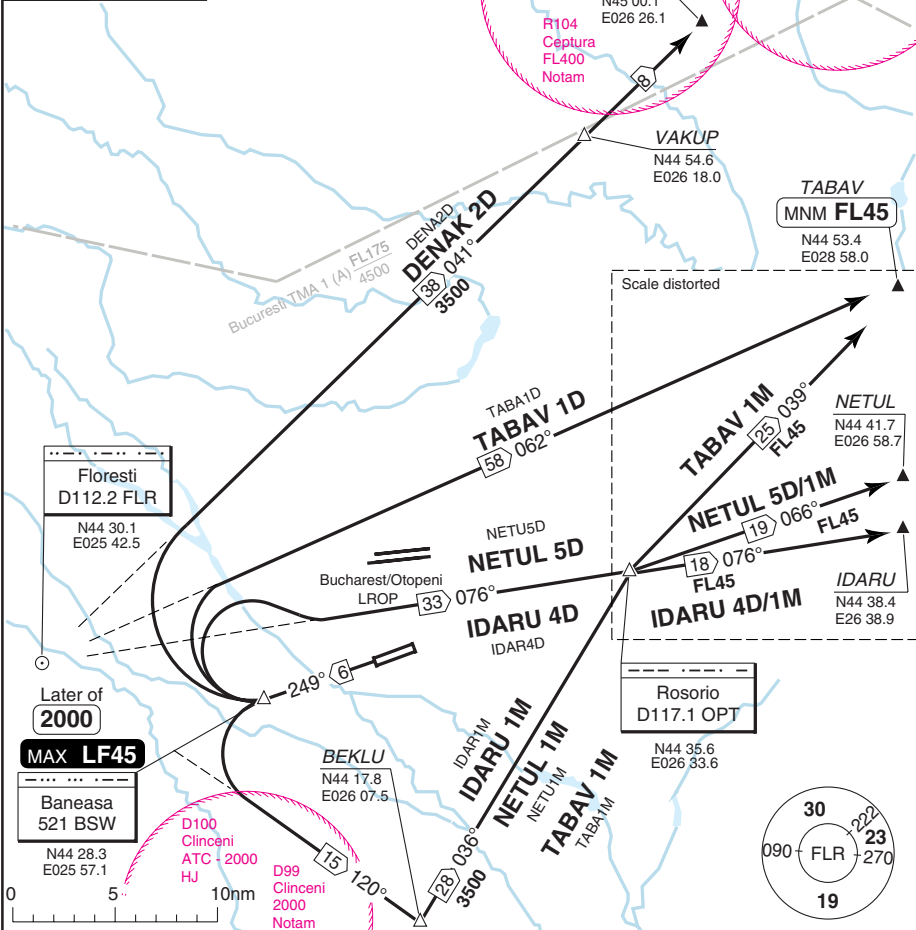
Change: Completely revised

**THIS CHART IS A PART OF NAVIGRAPH NDAC AND IS INTENDED FOR FLIGHT SIMULATION USE ONLY**

SID RWY 25 East

Aurel Vlaicu BUCURESTI BANEASA

Baneasa GND 129.95	TWR 120.8	Bucuresti APP 118.25 120.6
TA 4000	AD Elev 299	



SPEED: MAX 250kt below FL100.

SID	Routeing	Altitude
<b>(INITIAL CLIMB)</b>	(Except IDARU 3D, NETUL 4D, TAVAB 1D): Climb on 249° - at BSW or 2000 whichever later, turn right - follow SID.	
DENAK 2D	R041 FLR - DENAK.	
IDARU 4D	076°/R256 OPT - OPT - R076 OPT - IDARU.	
IDARU 1M	Climb on 249° - BSW - turn left - R120 FLR - BEKLU - R216 OPT - OPT - R076 OPT - IDARU.	
NETUL 5D	R076°/256 OPT - OPT - R066 OPT - NETUL.	
NETUL 1M	Climb on 249° - BSW - turn left - R120 FLR - BEKLU - R216 OPT - OPT - R066 OPT - NETUL.	
TABAV 2D	R062 FLR - TABAV.	TABAV MNM FL45
TABAV 1M	Climb on 249° - BSW - turn left - R120 FLR - BEKLU - R215 OPT - OPT - R039 OPT - TABAV.	

© Navitech - lrbs03daorgo

30 - 3

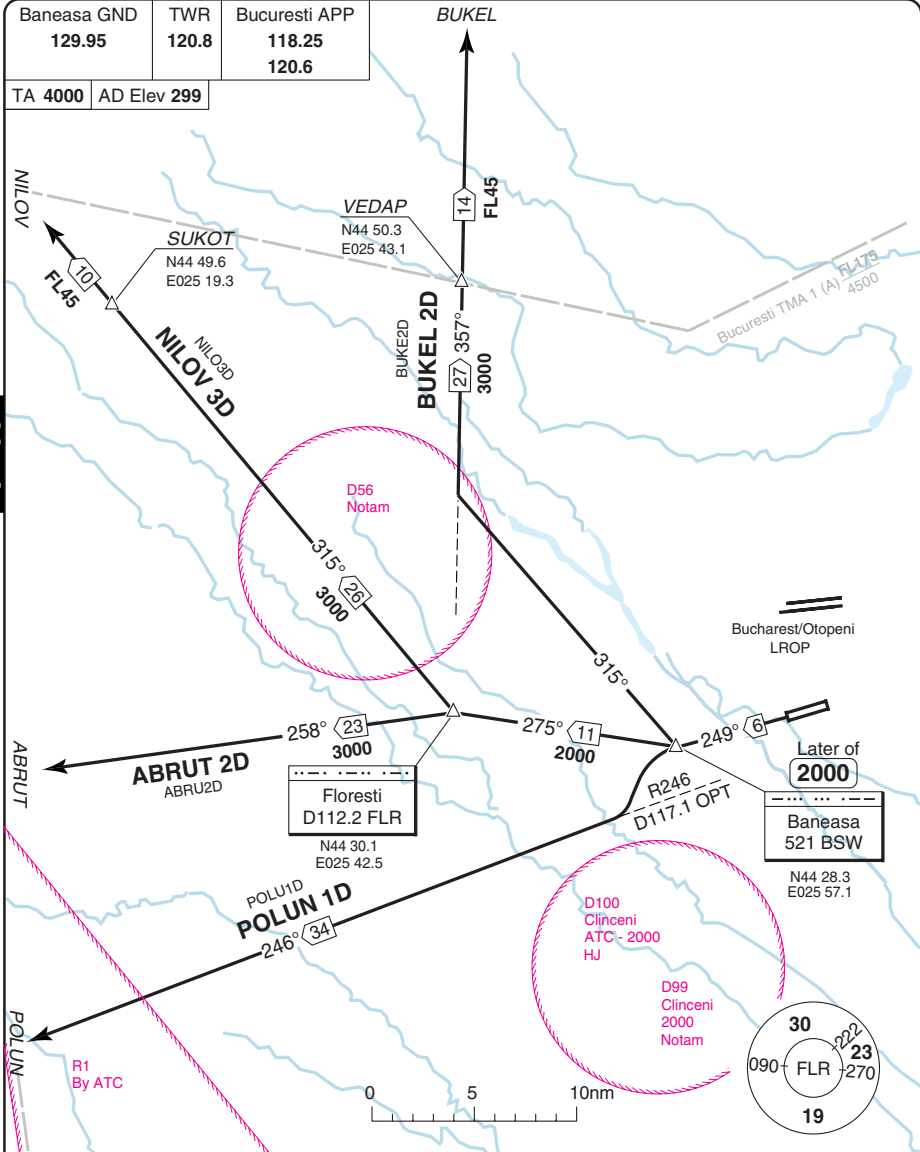
SID RWY 25 North, South, West

Aurel Vlaicu BUCURESTI BANEASA

Baneasa GND 129.95	TWR 120.8	Bucuresti APP 118.25 120.6
-----------------------	--------------	----------------------------------

TA 4000 AD Elev 299

30 - 4



SPEED: MAX 250kt below FL100.

SID	Routeing
<b>(INITIAL CLIMB)</b>	(except POLUN 1D): Climb on 249° - at BSW or 2000 , whichever later, turn right, follow SID.
<b>ABRUT 2D</b>	275°/R095 FLR - FLR - R258 FLR - ABRUT. Not available for traffic to VELIP.
<b>BUKEL 2D</b>	315° from BSW - R357 FLR - BUKEL. Not available for traffic to NEPOT.
<b>NILOV 2D</b>	275°/R095 FLR - FLR - R315 FLR - NILOV. Not available for traffic to VELIP.
<b>POLUN 1D</b>	Turn left - Climb on 249° - BSW - turn left - R246 OPT - POLUN. Not available for traffic to MOPUG.

© Navtech - lrbs04daorgo

Change: MT, SID text

**THIS CHART IS A PART OF NAVIGRAPH NDAC AND IS INTENDED FOR FLIGHT SIMULATION USE ONLY**

Bucuresti APP	Baneasa TWR	GND
118.25	120.8	129.95
120.6		

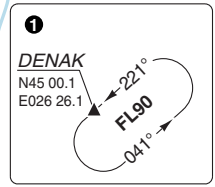
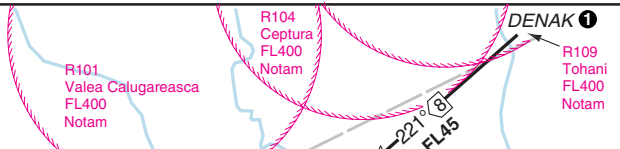
TL ATC AD Elev 299

**SPEED**

MAX 250kt below FL100

**COM FAIL**

Clearance limit: DENAK, NETAL, IDARU.  
Descend in holding pattern to 3000 and follow arrival route to ADULI. Descending to 2500.

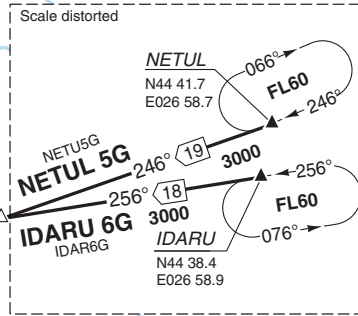


Bucuresti TMA 1 (A) FL175 4500

Bucuresti TMA 2 (A) FL175 2000

Bucharest/Otopeni  
LROP

Rosiori  
D117.1 OPT  
N44 35.6  
E026 33.6



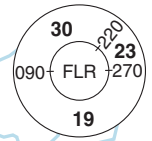
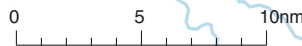
MASEB  
D3 FLR  
N44 32.2  
E025 45.5

Baneasa  
521 BSW  
N44 28.3  
E025 57.1

MNM 3000  
Baneasa  
256 BSE  
N44 31.8  
E026 13.8

Floresti  
D112.2 FLR  
N44 30.1  
E025 42.5

ADULI  
N44 27.3  
E025 52.2



THIS CHART IS A PART OF NAVIGRAPH NDAC AND IS INTENDED FOR FLIGHT SIMULATION USE ONLY

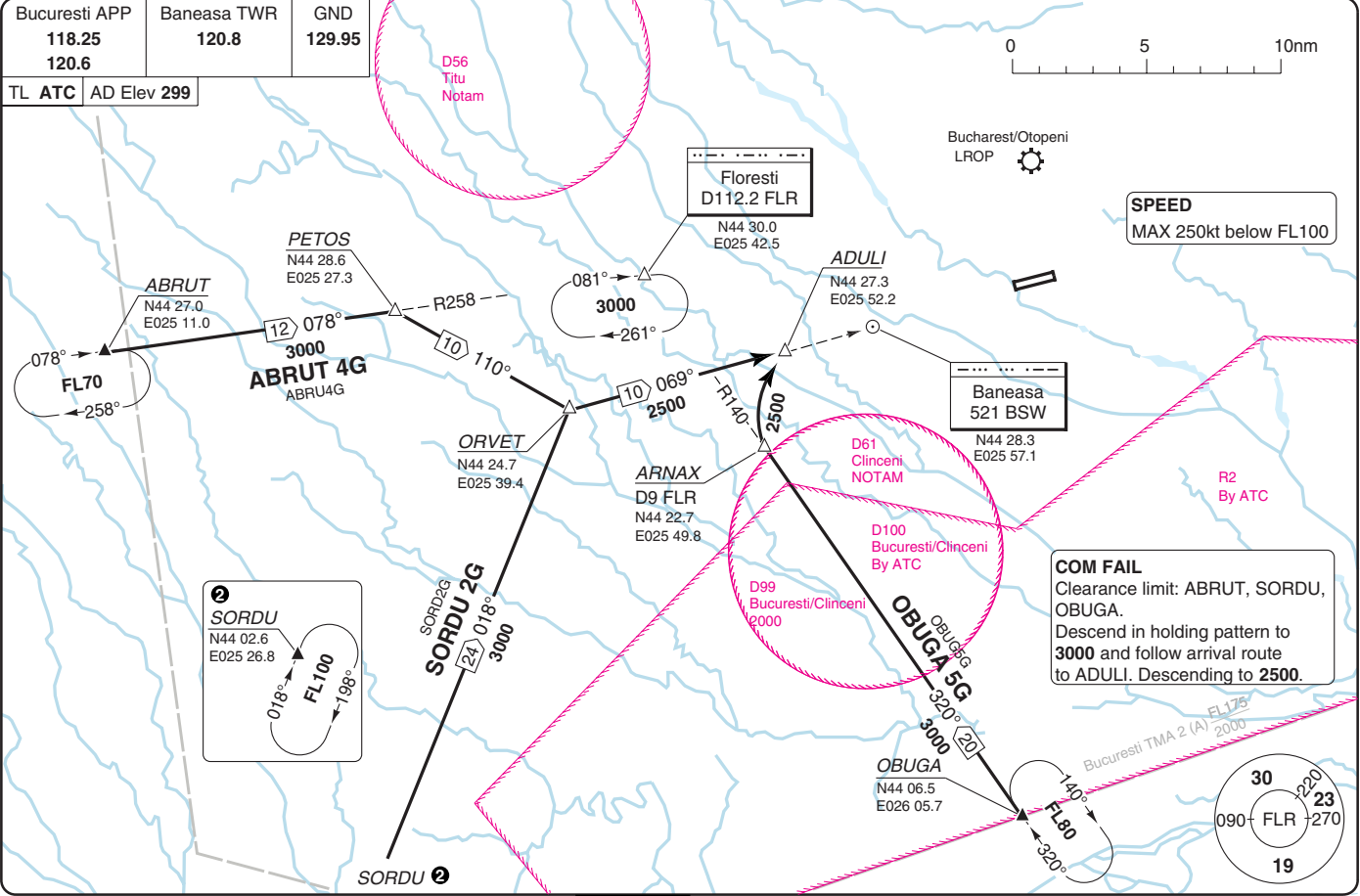
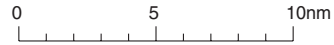
STAR Rwy 07 from North, East  
 WEF 05 APR 12  
 Aurel Vlaicu BUCURESTI BANEASA  
 40 - 1 | 07 MAR 12  
 Romania - LRBS / BBU

STAR RWY 07 from South, West

Aurel Vlaicu **BUCURESTI BANEASA**

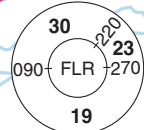
Bucuresti APP <b>118.25</b> <b>120.6</b>	Baneasa TWR <b>120.8</b>	GND <b>129.95</b>
--	-----------------------------	----------------------

TL ATC AD Elev 299



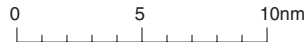
**SPEED**  
MAX 250kt below FL100

**COM FAIL**  
Clearance limit: ABRUT, SORDU, OBUGA.  
Descend in holding pattern to 3000 and follow arrival route to ADULI. Descending to 2500.



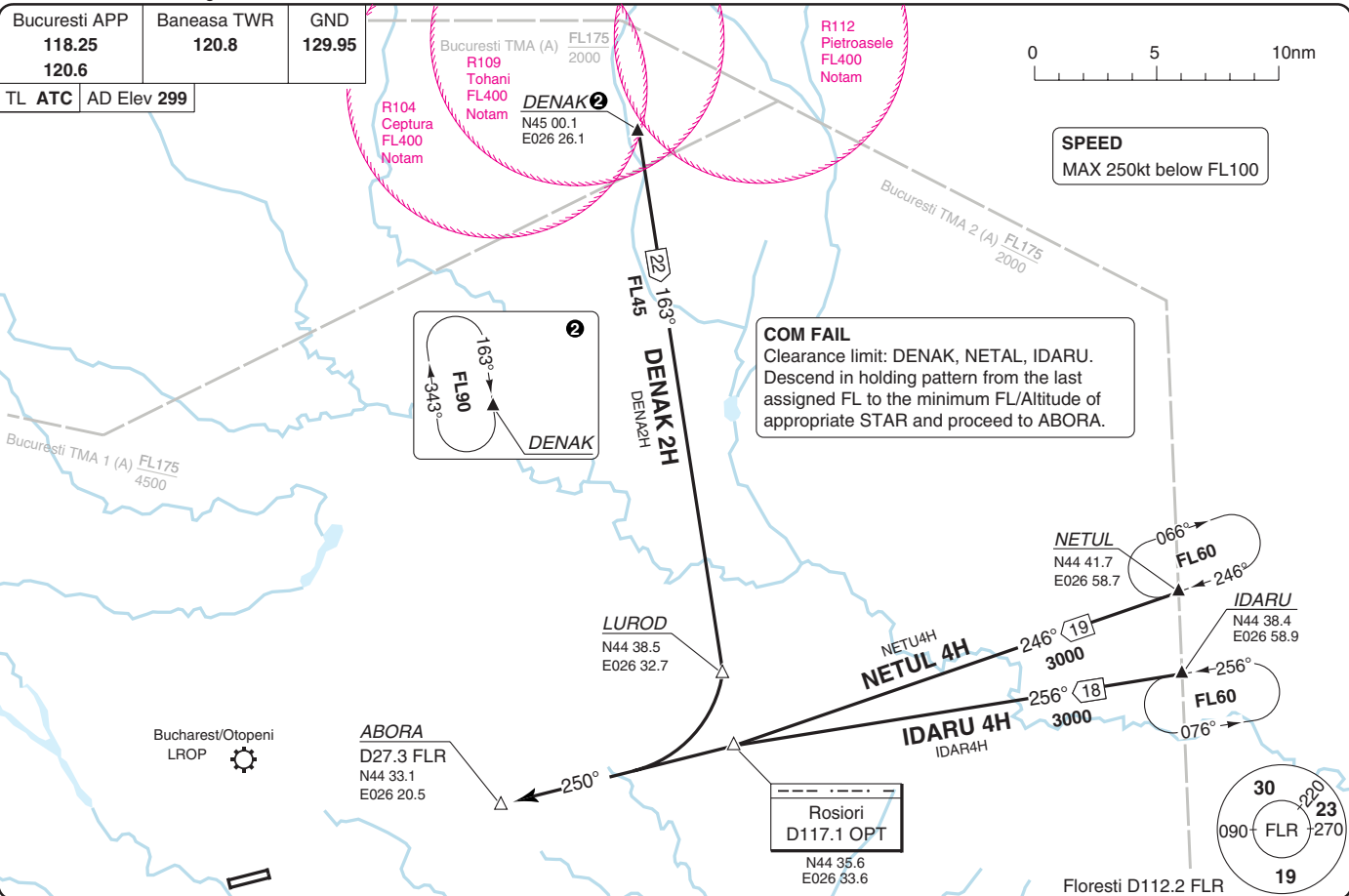
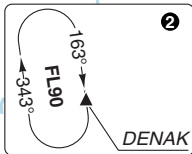
Bucuresti APP	Baneasa TWR	GND
118.25	120.8	129.95
120.6		

TL ATC AD Elev 299



**SPEED**  
MAX 250kt below FL100

**COM FAIL**  
Clearance limit: DENAK, NETAL, IDARU.  
Descend in holding pattern from the last assigned FL to the minimum FL/Altitude of appropriate STAR and proceed to ABORA.



**STAR RWY 25** from North, East

Aurel Vlaicu **BUCCURESTI BANEASA**

**W/F 05 APR 12**

**40 - 3 | 07 MAR 12**

Romania - LRBS / BBU

THIS CHART IS A PART OF NAVIGRAPH NDAC AND IS INTENDED FOR FLIGHT SIMULATION USE ONLY

Change: Completely revised

WEF 05 APR 12

40 - 4 | 07 MAR 12

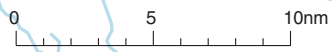
Romania - LRBS / BBU

STAR RWY 25 from South, West

Aurel Vlaicu **BUCURESTI BANEASA**

Bucuresti APP <b>118.25</b> <b>120.6</b>	Baneasa TWR <b>120.8</b>	GND <b>129.95</b>
--	-----------------------------	----------------------

TL ATC AD Elev 299



**SPEED**  
MAX 250kt below FL100

**COM FAIL**  
Clearance limit: ABRUT, SORDU, OBUGA, OSTAL.  
Descend in holding pattern from the last assigned FL to the minimum FL/Altitude of appropriate STAR and proceed to ABORA/BSE.

**ABRUT**  
N44 27.0  
E025 11.0

**ABRU3H**  
**ABRUT 3H**  
078°  
3000

**Floresti**  
D112.2 FLR  
N44 30.1  
E025 42.5

**Baneasa**  
256 BSE  
N44 31.8  
E026 13.8

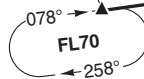
Bucharest/Otopeni  
LROP

**ABORA**  
D27.3 FLR  
N44 33.1  
E026 20.5

**Rosiori**  
D117.1 OPT  
N44 35.5  
E026 33.6

**AMODA**  
N44 31.9  
E026 30.1

**BUSOK**  
N44 31.9  
E026 36.1



**SORDU 2H**  
SORDU2H  
018°  
3000

**SORDU**  
N44 02.5  
E025 26.8



**ORVET**  
N44 24.7  
E025 39.4

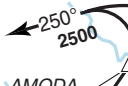


**OBUGA 1**  
N44 06.5  
E026 05.7

**OBUGA 3H**  
OBUGA3H  
030°  
3000

R2 GND-by ATC

Bucuresti-TMA 2 (A)  
FL175  
2000



© Navtech - lfs04aaorgl

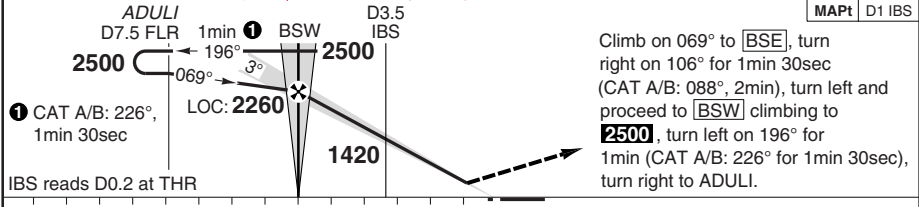
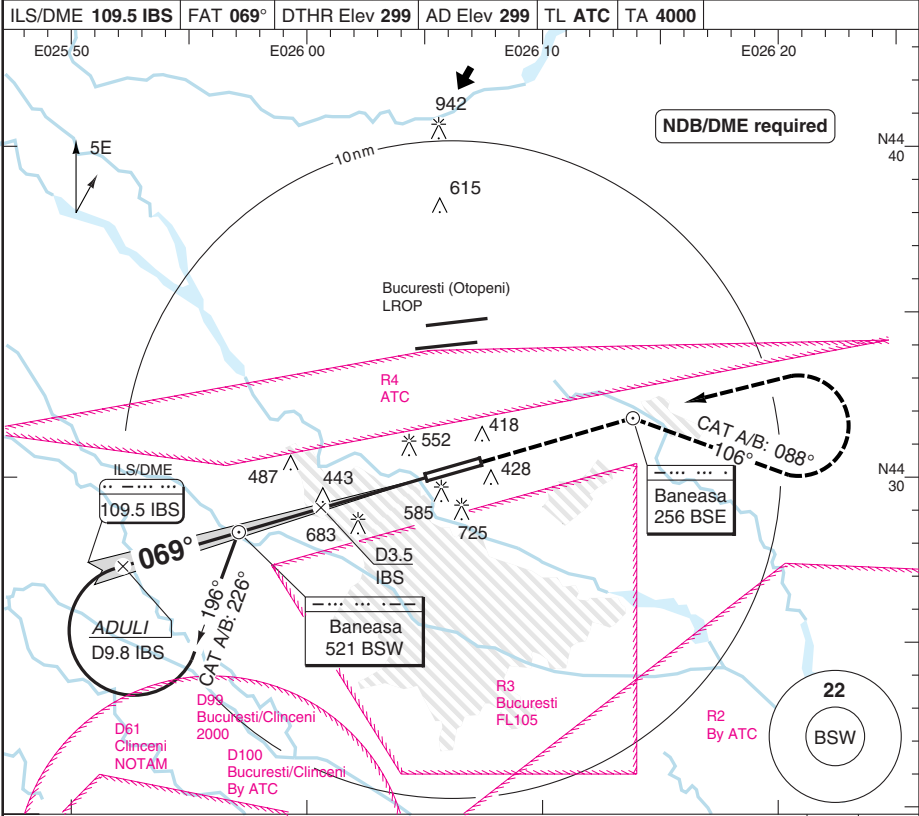
Change: Completely revised

**THIS CHART IS A PART OF NAVIGRAPH NDAC AND IS INTENDED FOR FLIGHT SIMULATION USE ONLY**

ILS RWY 07

Aurel Vlaicu BUCURESTI BANEASA

Bucuresti APP 118.25 120.6	Baneasa PAR 125.2	TWR 120.8	GND 129.95
ILS/DME 109.5 IBS	FAT 069°	DTHR Elev 299	AD Elev 299
TL ATC		TA 4000	



nm 14	13	12	11	10	9	8	7	6	5	4	3	2	1	0	TCH 56
ACFT	CAT II	ILS+DME	LOC+DME	Note: Circling NA.											
A															
B	RA 103	500 (200)	710 (411)												
C	300m	550m	1200m												
D															
GS	100	120	140	160											
ROD 3.0°	540	650	760	860											
FAF-MAPt	3:03	2:33	2:11	1:55											
DME IBS	3.0° ALT	LDA 2960x45 9711x147ft P 3°													
6.8	2500														
6	2230														
5	1910														
4	1590														
3	1270														
2	950														
1.3	710														

© Navtech - lrbs01iaip00

50 - 1

FALS

WEF 05 APR 12

50 - 2 | 07 MAR 12

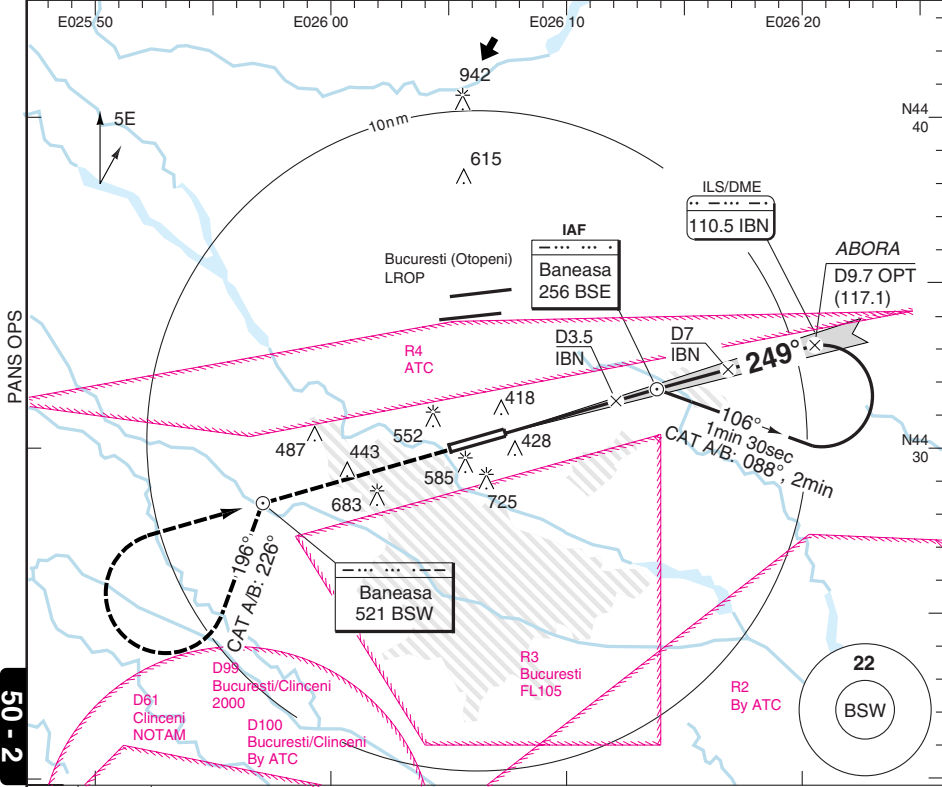
Romania - LRBS / BBU

ILS RWY 25

Aurel Vlaicu BUCURESTI BANEASA

Bucuresti APP 118.25 120.6	Baneasa PAR 125.2	TWR 120.8	GND 129.95
----------------------------------	----------------------	--------------	---------------

ILS/DME 110.5 IBN	FAT 249°	THR Elev 282	AD Elev 299	TL ATC	TA 4000
-------------------	----------	--------------	-------------	--------	---------



50 - 2

**MAPt** D1.1 IBN

Climb on 249° to **BSW**, turn left on 196° for 1min (CAT A/B: 226°, 1min 30sec), turn right and proceed to **BSE** climbing to **2500**, turn right on 106° for 1min 30sec (CAT A/B: 088°, 2min), turn left to ABORA.

IBN reads D0.2 at THR

TCH 53

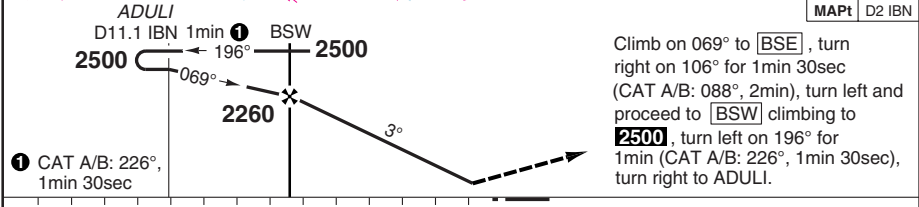
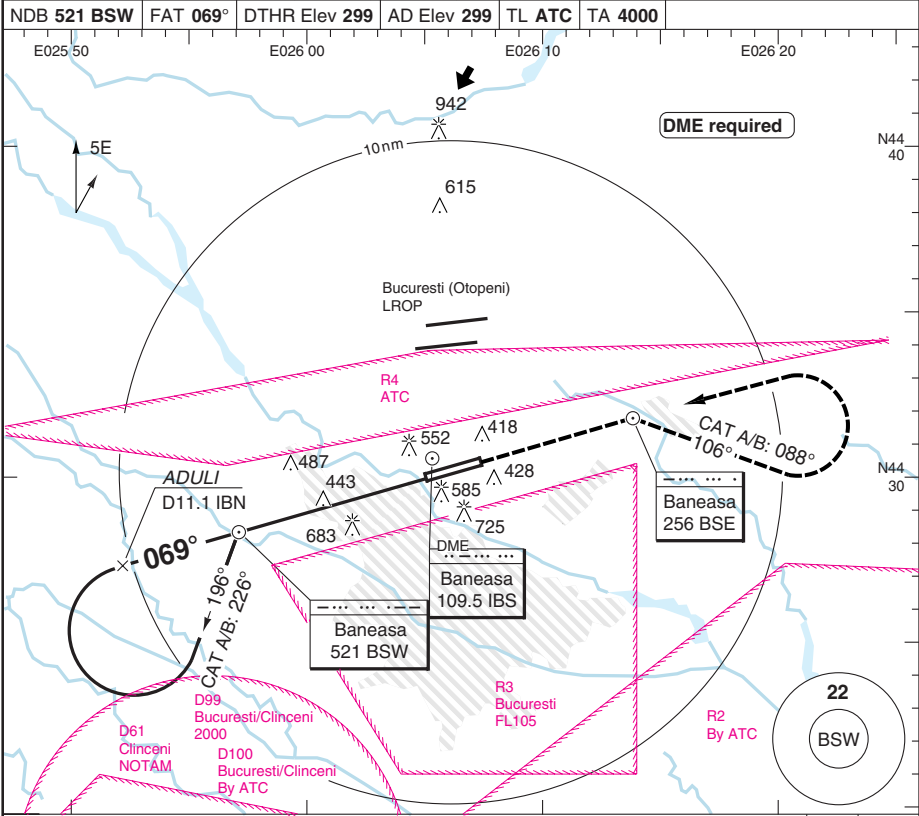
ACFT	<b>ILS+DME</b>	<b>LOC+DME</b>	Note: Circling NA.					DME ALT	LDA 3100x45 10170x147ft
A							7	2500	<p>P 3°</p> <p>ILS</p>
B	490 (200)	640 (358)					6	2190	
C	750m	1200m					5	1870	
D							4	1560	
							3	1240	
							2	920	
GS	80	100	120	140	160				
ROD 3.0°	420	530	640	740	850				
FAF-MAPt	4:26	3:32	2:57	2:32	2:13				

© Navtech - lrbs02iaip00

NDB RWY 07

Aurel Vlaicu BUCURESTI BANEASA

Bucuresti APP 118.25 120.6	Baneasa PAR 125.2	TWR 120.8	GND 129.95			
NDB 521 BSW	FAT 069°	DTHR Elev 299	AD Elev 299	TL ATC	TA 4000	



ACFT	NDB+DME	Note: Circling NA.	GS	80	100	120	140	160	LDA 2960x45 9711x147ft P 3°
A	900 (601) 1500m		ROD 3°	430	530	640	750	850	
B			FAF +20s	2120	2080	2050	2010	1980	
C	900 (601) 2100m		+40s	1970	1910	1830	1760	1690	
D			+60s	1830	1730	1620	1510	1410	
			FAF-930	3:12	2:34	2:08	1:50	1:36	
			FAF-MAPt	4:02	3:14	2:41	2:18	2:01	FALS

© Navtech - lrbs03iaip00

50 - 3

Change: Completely revised

THIS CHART IS A PART OF NAVIGRAPH NDAC AND IS INTENDED FOR FLIGHT SIMULATION USE ONLY

WEF 05 APR 12

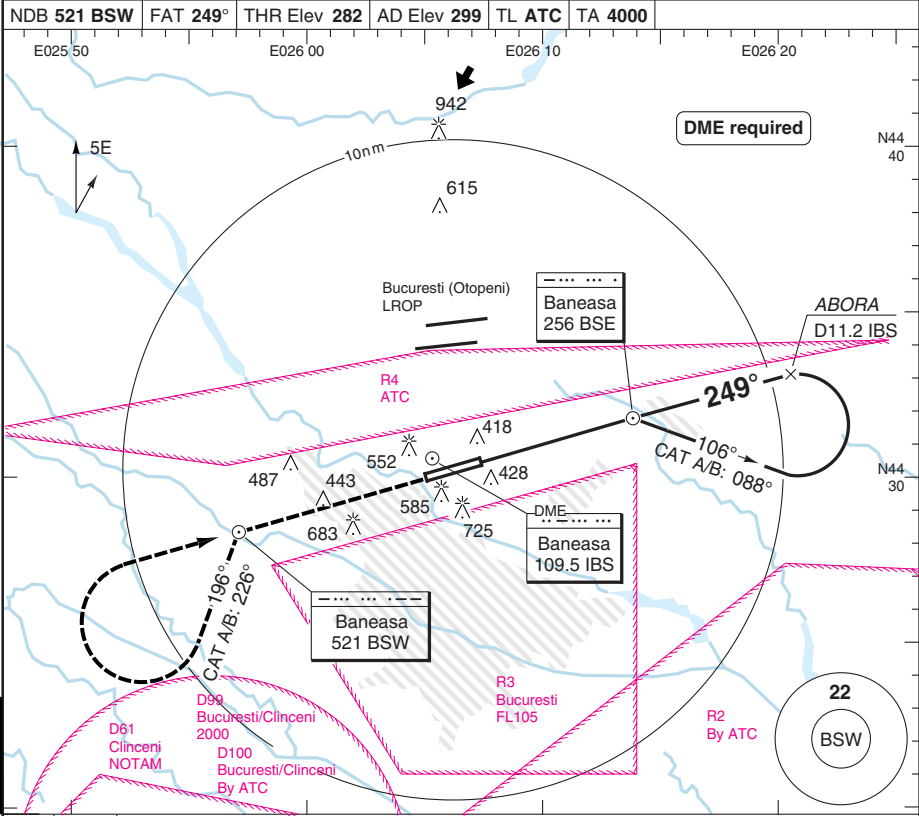
50 - 4 | 07 MAR 12

Romania - LRBS / BBU

# NDB RWY 25

# Aurel Vlaicu BUCURESTI BANEASA

Bucuresti APP 118.25 120.6	Baneasa PAR 125.2	TWR 120.8	GND 129.95			
NDB 521 BSW		FAT 249°	THR Elev 282	AD Elev 299	TL ATC	TA 4000



PANS OPS

50 - 4

**MAPt D2 IBS**

Climb on 249° to **BSW**, turn left on 196° for 1min (CAT A/B: 226°, 1min 30sec), turn right and proceed to **BSE** climbing to **2500**, turn right on 106° for 1min 30sec (CAT A/B: 088°, 2min), turn left to ABORA.

**ABORA D11.2 IBS**

**2500** BSE 1min 30sec 106°

**1900** CAT A/B: 1880

**249°**

**2500**

**1** CAT A/B: 088°, 2min

0 1 2 3 4 5 6 7 8 9 10 11 12 13 nm

ACFT	<b>2NDB</b>	<b>Note:</b> Circling NA.	GS	80	100	120	140	160	LDA 3100x45 10170x147ft P 3°
A	<b>690</b> (408)		ROD 2.9°	430	540	640	750	860	
B	1500m		FAF +20s	<b>1760</b>	<b>1720</b>	<b>1690</b>	<b>1650</b>	<b>1610</b>	
C	<b>690</b> (408)		+40s	<b>1610</b>	<b>1540</b>	<b>1470</b>	<b>1400</b>	<b>1330</b>	
D	1700m	+60s	<b>1470</b>	<b>1360</b>	<b>1260</b>	<b>1150</b>	<b>1040</b>		
			FAF-690	2:50	2:16	1:53	1:37	1:25	IALS 660
			FAF-MAPt	3:14	2:35	2:09	1:51	1:37	

© Navtech - lrbs04iaip00 EU OPS

Change: Completely revised

**THIS CHART IS A PART OF NAVIGRAPH NDAC AND IS INTENDED FOR FLIGHT SIMULATION USE ONLY**

JAR-OPS Minima

Aurel Vlaicu BUCURESTI BANEASA

The following Minima is for Public Transport aircraft and conforms to JAR-OPS1 regulations.

STRAIGHT-IN APPROACH		C				D			
R/W	Procedure	DA/ MDA QNH ft	DH/ MDH QFE ft	RVR m	RVR No ALS m	DA/ MDA QNH ft	DH/ MDH QFE ft	RVR m	RVR No ALS m
07	ILS/DME (1)	500	200	550	1000	500	200	550	1000
07	LOC/DME (1)	710	420	1000	1800	710	420	1400	2000
07	PAR (1)	620	320	800	1200	630	330	800	1200
07	NDB (1)	930	640	1200	2000	930	640	1600	2000
25	ILS/DME	490	200	550	1000	490	200	550	1000
25	LOC/DME	640	360	1000	1800	640	360	1400	2000
25	PAR	540	260	650	1200	550	270	650	1200
25	2NDB	740	460	1200	2000	740	460	1600	2000

Notes:

(1) Procedure based on aerodrome elevation.

CIRCLING		C			D		
R/W	Procedure	MDA QNH ft	MDH QFE ft	Vis m	MDA QNH ft	MDH QFE ft	Vis m

Not authorised

Notes:

TAKE-OFF		C	D
Runway	Facilities	m	m
	RCLL(H)+REDL(H)+Multi RVR (1)	-	-
	RCLL+REDL+Multi RVR	-	-
07, 25	RCLL+REDL	200	250
07, 25	RCL and/or REDL (2)	250	300
All	Nil (Day only)	500	500

Notes:

(1) Subject to Approval.

(2) For night operations, at least runway edge and end lights required.

The following Minima is for Public Transport aircraft and conforms to JAR-OPS1 regulations.

STRAIGHT-IN APPROACH		A				B			
R/W	Procedure	DA/ MDA QNH ft	DH/ MDH QFE ft	RVR m	RVR No ALS m	DA/ MDA QNH ft	DH/ MDH QFE ft	RVR m	RVR No ALS m
07	ILS/DME (1)	500	200	550	1000	500	200	550	1000
07	LOC/DME (1)	710	420	900	1500	710	420	1000	1500
07	PAR (1)	600	300	650	1200	610	310	800	1200
07	NDB (1)	930	640	1000	1500	930	640	1200	1500
25	ILS/DME	490	200	550	1000	490	200	550	1000
25	LOC/DME	640	360	900	1500	640	360	1000	1500
25	PAR	520	240	600	1000	530	250	600	1000
25	2NDB	740	460	1000	1500	740	460	1200	1500

Notes:

(1) Procedure based on aerodrome elevation.

CIRCLING		A			B		
R/W	Procedure	MDA QNH ft	MDH QFE ft	Vis m	MDA QNH ft	MDH QFE ft	Vis m
Not authorised							

Notes:

TAKE-OFF		A	B
Runway	Facilities	m	m
	RCLL(H)+REDL(H)+Multi RVR (1)	-	-
	RCLL+REDL+Multi RVR	-	-
07, 25	RCLL+REDL	200	200
07, 25	RCL and/or REDL (2)	250	250
All	Nil (Day only)	500	500

Notes:

(1) Subject to Approval.

(2) For night operations, at least runway edge and end lights required.

The following Minima is for Public Transport aircraft and conforms to JAR-OPS1 regulations.

## CAT II

Special aircrew and aircraft certification required.

	C				D			
	DA QNH ft	DH QFE ft	RA ft	RVR m	DA QNH ft	DH QFE ft	RA ft	RVR m
Runways								
07 (1)	399	100	103	300	399	100	103	350

Notes:

- 1) Cat D RVR may be reduced to 300m when conducting autoland.

	A				B			
	DA QNH ft	DH QFE ft	RA ft	RVR m	DA QNH ft	DH QFE ft	RA ft	RVR m
Runways								
07	399	100	103	300	399	100	103	300

Notes: