

## Airport information:

Country: Bosnia and Herzegovina

City: MOSTAR

Coordinates: N 43° 17.0', E017 50.8

Elevation: 174

Customs: upon NOTAM

Fuel: Jet A1

RFF: CAT 3 (CAT 7 O/R 24HRS)

hours: AD:M-F 0800-1600, ATS: by NOTAM

## Runways:

Runway 16

Takeoff length: 2400, Landing length: 2400

Runway 34

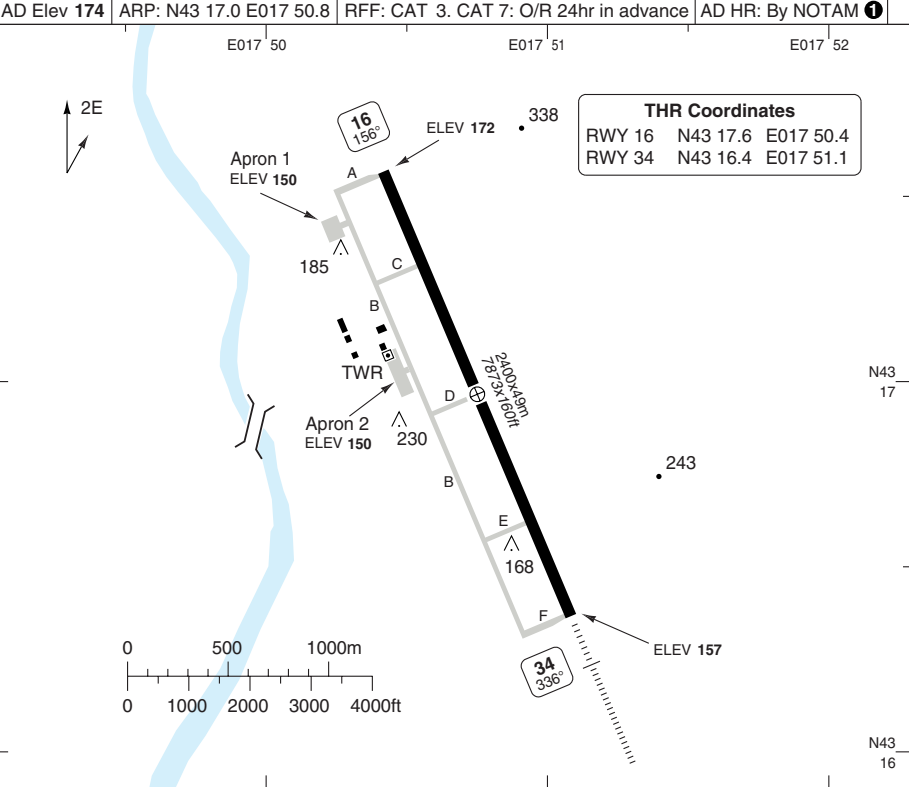
Takeoff length: 2400, Landing length: 2400

# AERODROME

# MOSTAR

10 - 1

Mostar TWR 124.2  
 AD Elev 174 ARP: N43 17.0 E017 50.8 RFF: CAT 3. CAT 7: O/R 24hr in advance AD HR: By NOTAM 1



RWY	Slope	TORA m/ft	LDA m/ft	ALS	REDL	Additional
16	-0.2	2400 / 7873	2400 / 7873	-	H	-
34	+0.2	2400 / 7873	2400 / 7873	H-D	H	P 3.5° L/R (56)

1 Extension O/R 24hr in advance.

EU OPS		TAKE OFF MINIMA	
RWY	Facilities	RVR A B C D	
16/34	RCL (day only) or RCL + REDL	400m	
	NIL (day only)	500m	

GENERAL INFORMATION	
<p><b>1. WARNING</b></p> <p>1.1 High terrain in all quadrants.                      1.2 Bird hazard.</p> <p><b>2. SPEED</b></p> <p>MAX 250kt below FL100.</p>	<p><b>3. TWY RESTRICTION</b></p> <p>3.1 TWY B from TWY F to Apron 1, TWY C, D, E, F closed to all night and low visibility operations.                      3.2 TWY A width 18-37m/59-121ft.                      3.3 TWY B width 12.2-18m/40-59ft.                      3.4 TWY C, D and E width 12.2m/40ft.                      3.5 TWY F width 12.2-37m/40-121ft.</p>

© Navtech - lqmo01laorgo

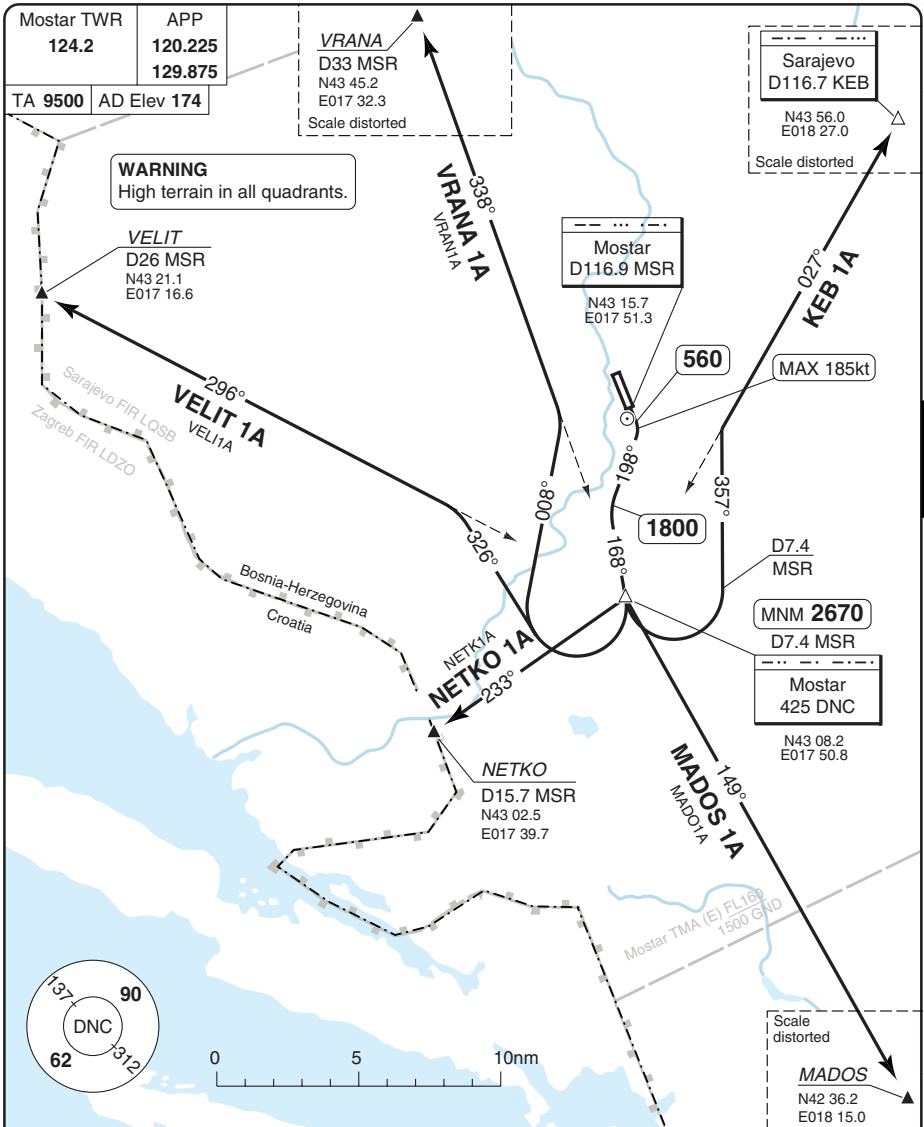
Reverse side blank

Change: New spec.

**THIS CHART IS A PART OF NAVIGRAPH NDAC AND IS INTENDED FOR FLIGHT SIMULATION USE ONLY**

SID RWY 16 ALPHA

MOSTAR



30 - 1

SID	MNM climb	Routeing	Altitudes
<b>(INITIAL CLIMB)</b>		Climb on 156° to 560 (not before DER) - turn right (MAX 185kt) - 198°- 168° to DNC - DNC - follow SID.	DNC MNM 2670
<b>KEB 1A</b>	7.2% to 1800, then 5.9% from 1800 to 8000	Turn left - 357° - 027° from DNC - KEB.	
<b>MADOS 1A</b>	7.2% to 2200	Turn left - 149° from DNC - MADOS.	
<b>NETKO 1A</b>	7.2% to 2200	Turn right - 233° from DNC - NETKO.	
<b>VELIT 1A</b>	7.2% to 1800	Turn right - 326° - 296° from DNC - VELIT.	
<b>VRANA 1A</b>	7.2% to 1800, then 3.6% from 1800 to 9000	Turn right - 008° - 338° from DNC - VRANA.	

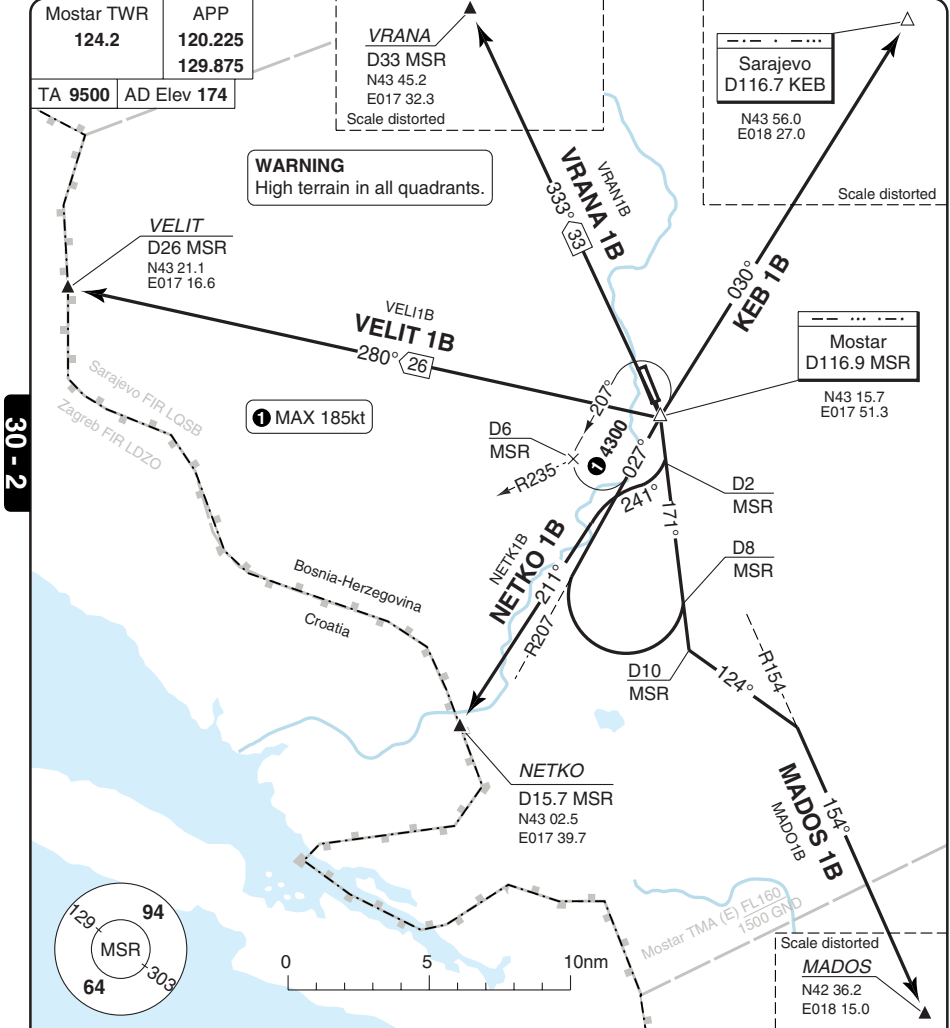
© Navitech - lqmo01daorgo

Change: New spec.

**THIS CHART IS A PART OF NAVIGRAPH NDAC AND IS INTENDED FOR FLIGHT SIMULATION USE ONLY**

SID RWY 16 BRAVO

MOSTAR



**MNM CLIMB GRADIENT:** 7.2% to 2200.

VRANA 1B: 3.4% from 2200 to 9000. ②

KEB 1B: 5% from 2200 to 8000. ②

② If unable to achieve, climb with MNM climb gradient 3.3% until MSR, then climb in HP. At 8000 direct to KEB.

Separation from arrivals and HP not guaranteed.

SID	Routing
<b>(INITIAL CLIMB)</b>	Climb on 163° - MSR - R171 MSR - follow SID.
<b>KEB 1B</b>	At D8 MSR turn right - intcp R207 MSR - MSR - intcp R030 MSR - KEB.
<b>MADOS 1B</b>	At D10 MSR turn left - 124° - intcp R154 MSR - MADOS.
<b>NETKO 1B</b>	At D2 MSR turn right - 241° - intcp R211 MSR - NETKO.
<b>VELIT 1B</b>	At D8 MSR turn right - intcp R207 MSR - MSR - turn left - intcp R280 MSR - VELIT.
<b>VRANA 1A</b>	At D8 MSR turn right - intcp R207 MSR - MSR - turn left - intcp R333 MSR - VRANA.

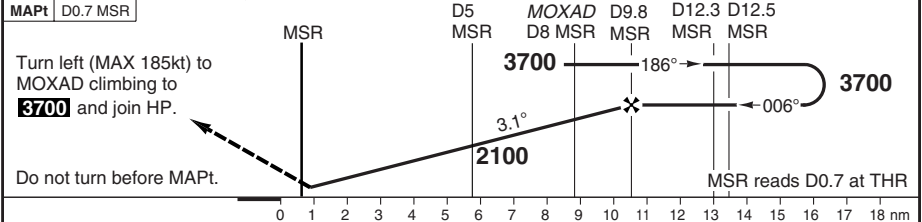
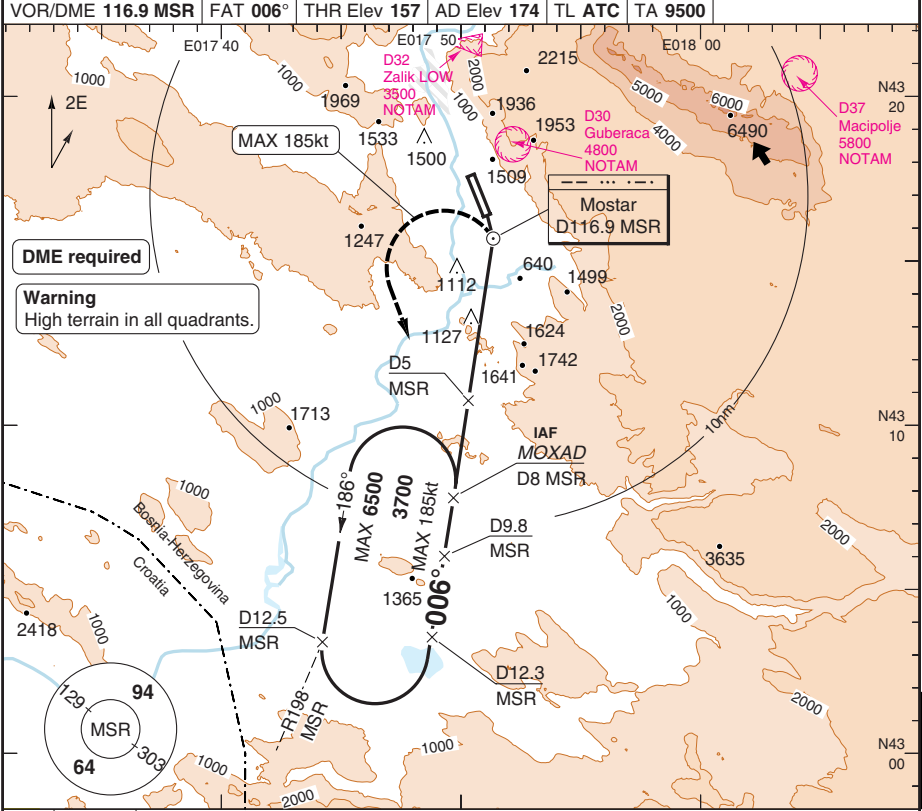
Change: New spec.

**THIS CHART IS A PART OF NAVIGRAPH NDAC AND IS INTENDED FOR FLIGHT SIMULATION USE ONLY**

# VOR A RWY 34 CIRCLING

# MOSTAR

Mostar APP 120.225 129.875	TWR 124.2	VOR/DME 116.9 MSR	FAT 006°	THR Elev 157	AD Elev 174	TL ATC	TA 9500
----------------------------------	--------------	-------------------	----------	--------------	-------------	--------	---------



ACFT	VOR Circling <b>a</b> <b>b</b>
A	<b>1780</b> (1623) 1.5km
B	<b>1800</b> (1643) 1.6km
C	<b>1980</b> (1823) 2.4km
D	NA

**a** NA East of RWY 16/34.  
**b** Based on THR Elev.

DME MSR	ALT	LDA 2400x49 7873x160ft P 3.5° L/R (56)
9.8	<b>3700</b>	
9	<b>3440</b>	
8	<b>3110</b>	
7	<b>2770</b>	
6	<b>2440</b>	
5	<b>2110</b>	
4.6	<b>1980</b>	

GS	80	100	120	140	160
ROD 3.1°	440	560	670	780	890

Change: New spec.

© Navtech - lqmo01iaip00

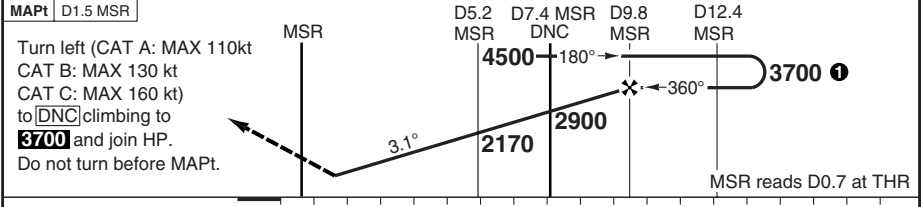
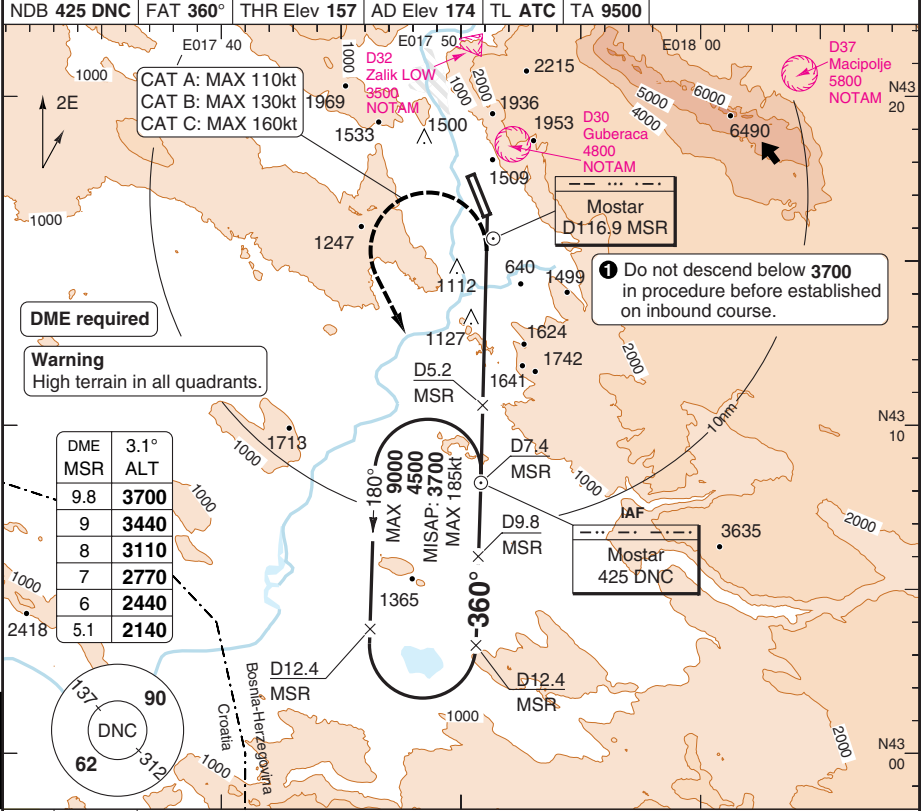
50 - 1

FALS

# NDB A RWY 34 CIRCLING

# MOSTAR

Mostar APP 120.225 129.875	TWR 124.2				
NDB 425 DNC	FAT 360°	THR Elev 157	AD Elev 174	TL ATC	TA 9500



ACFT	NDB Circling 5% <b>a</b> <b>b</b>	NDB Circling 4% <b>a</b> <b>b</b>	NDB Circling 3% <b>a</b> <b>b</b>	NDB Circling 2.5% <b>a</b> <b>b</b>	LDA 2400x49 7873x160ft P 3.5° L/R (56)	
A	1950 (1793) 1.5km	1990 (1833) 1.5km	2060 (1903) 1.5km	2090 (1933) 1.5km		
B	1960 (1803) 1.6km	2020 (1863) 1.6km	2080 (1923) 1.6km	2110 (1953) 1.6km		
C	2020 (1863) 2.4km	2070 (1913) 2.4km	2120 (1963) 2.4km	2140 (1983) 2.4km		
D	NA	NA	NA	NA		
GS	80	100	120	140	160	Note: Circling NA East of RWY 16/34. <b>a</b> MISAP MNM Climb gradient. <b>b</b> Based on THR Elev.
ROD 3.1°	440	560	670	780	890	
FAF-MAPt	6:14	4:59	4:09	3:33	3:07	

50 - 2

EU OPS © Navitech - lqmo02lap00