

## Airport information:

Country: Italy

City: TREVISO

Coordinates: N 45° 39.1', E012 11.9

Elevation: 59

Customs: Customs

Fuel: JP1

RFF: CAT 7

hours: ATS 0500-2300

## Runways:

Runway 07

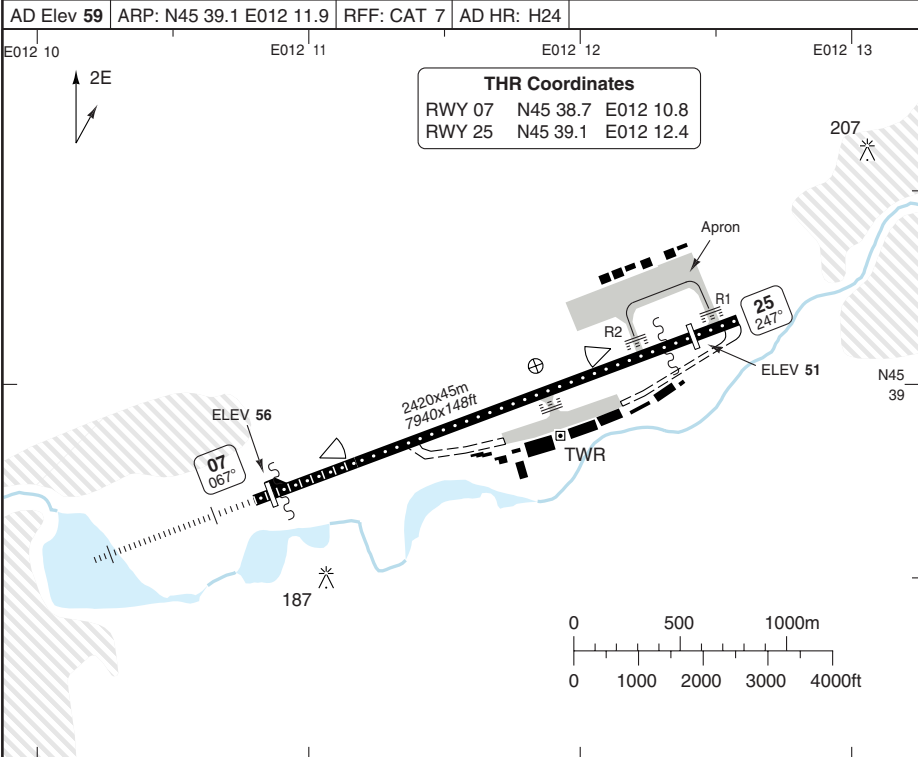
Takeoff length: 2420, Landing length: 2343

Runway 25

Takeoff length: 2420, Landing length: 2302

# AERODROME

Treviso TWR <b>118.7</b> <b>122.1</b>			
AD Elev <b>59</b>	ARP: N45 39.1 E012 11.9	RFF: CAT 7	AD HR: H24



RWY	Slope	TORA m/ft	LDA m/ft	ALS	REDL	RCLL	Additional
07	-0.1	2420 / 7940	2343 / 7686	H-D	Vrbl	30m	P 3° (62)
25	+0.1	2420 / 7940	2302 / 7552	-	Vrbl	30m	P 3° (52)

**EU OPS TAKE OFF MINIMA**

RWY	Facilities	CEIL / VIS			
		A	B	C	D
07 / 25		500ft / 2000m			

10 - 2 28 JUL 10

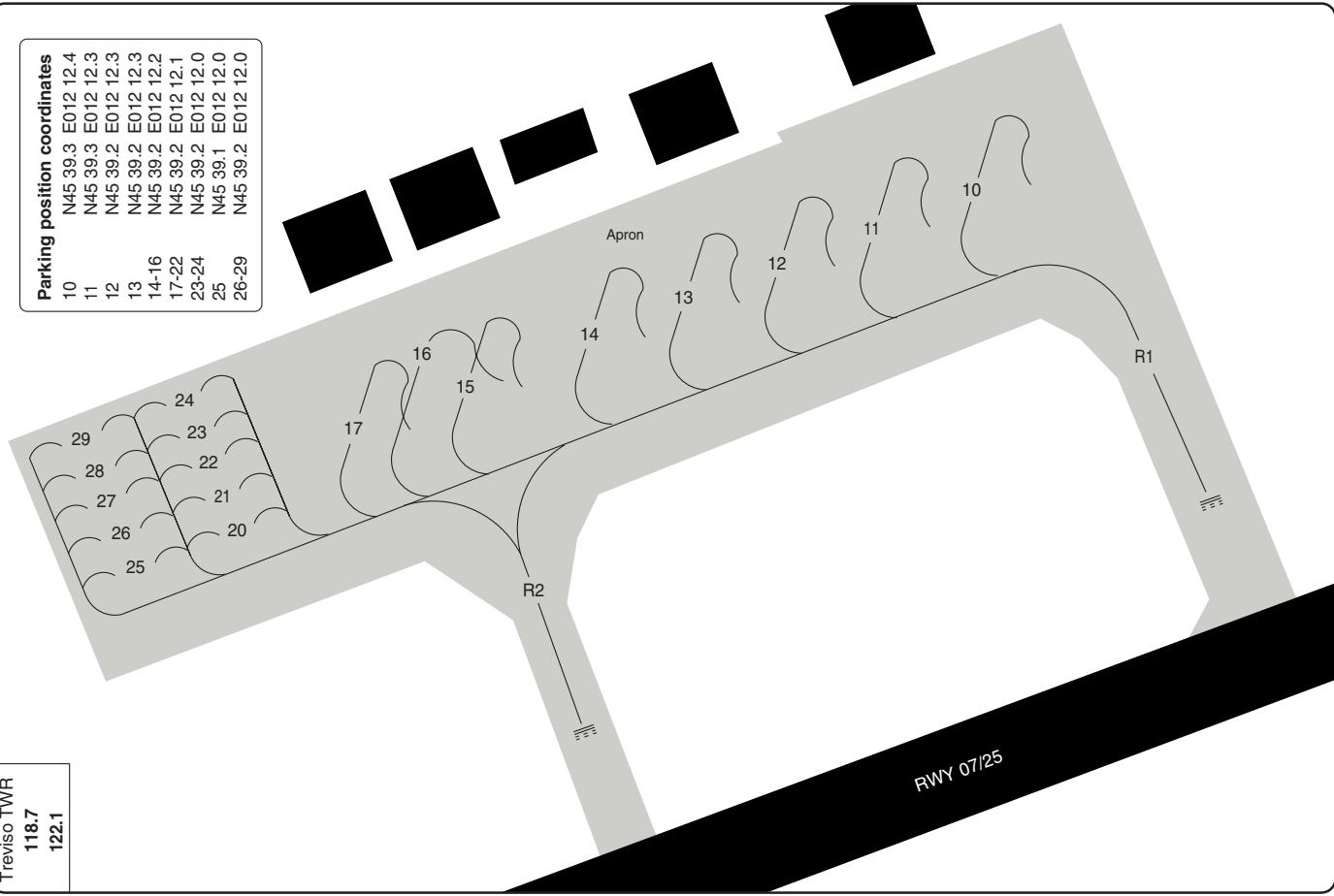
Italy - LIPH / TSF

# AERODROME Parking

# St Angelo TREVISO

Treviso TWR  
118.7  
122.1

Parking position	coordinates
10	N45 39.3 E012 12.4
11	N45 39.3 E012 12.3
12	N45 39.2 E012 12.3
13	N45 39.2 E012 12.3
14-16	N45 39.2 E012 12.2
17-22	N45 39.2 E012 12.1
23-24	N45 39.2 E012 12.0
25	N45 39.1 E012 12.0
26-29	N45 39.2 E012 12.0



© Navtech - liph2laorg

Change: Stand 13 coordinates.

**THIS CHART IS A PART OF NAVIGRAPH NDAC AND IS INTENDED FOR FLIGHT SIMULATION USE ONLY**

**GENERAL****GENERAL****1. NOISE ABATEMENT PROCEDURES**

- 1.1 Engine tests prohibited between 22-05 and 13-15.
- 1.2 APU limited to 60min before EOBT and to be cut-off 20min after ATA.
- 1.3 Aircraft must be noise certified to ICAO Annex16, VOL1, Chapter 3 or better.
- 1.4 Between 22-05 full length of runway must be used for landing to reach parking area.

**2. TAXIWAY RESTRICTION**

- 2.1 Taxiway R1 and R2 width 20m/56ft
- 2.2 Runway 07, 1st and 3rd taxiways on right side closed.

**3. TRAFFIC NOTES**

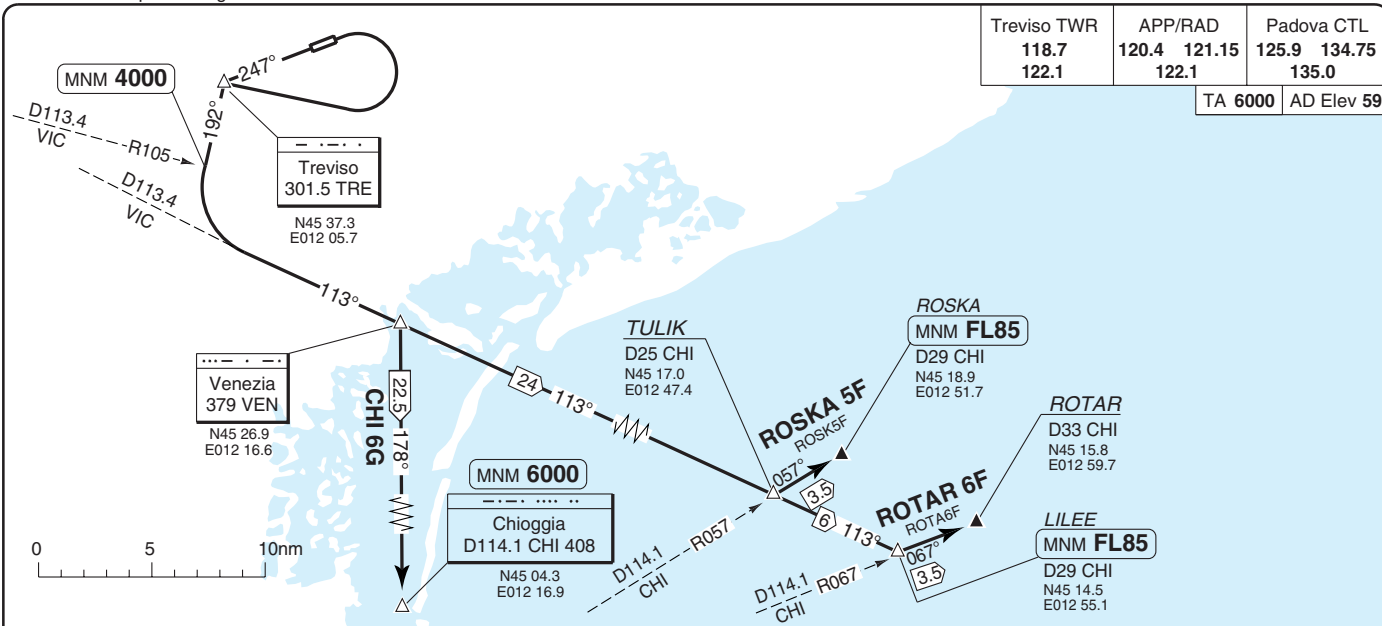
Runway 25 right hand circuit.

**4. WARNING**

Bird Hazard

**5. RESTRICTIONS**

Night approach procedures for CAT B aircraft or above allowed only with ILS serviceable.



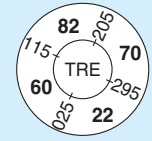
Treviso TWR	APP/RAD	Padova CTL
118.7	120.4 121.15	125.9 134.75
122.1	122.1	135.0

TA 6000 AD Elev 59

SID East

30 - 1 19 MAY 10

SID	MNM CLIMB	Routeing	Altitudes
INITIAL CLIMB RWY 07	6.71%	After take off turn right to TRE - follow 192° from TRE - follow SID	
INITIAL CLIMB RWY 25	5.75%	Climb on 247° to TRE - follow 192° from TRE - follow SID	
CHI 6G		At R105 VIC turn left onto 113° to VEN - At VEN turn right onto 178° from VEN / R358 CHI to CHI	R105 VIC: MNM 4000 CHI: MNM 6000
ROSKA 5F		At R105 VIC turn left to intercept R113 VIC to VEN - at TULIK turn left to intercept R057 CHI to ROSKA	R105 VIC: MNM 4000 ROSKA: MNM FL85
ROTAR 6F		At R105 VIC turn left to intercept R113 VIC to VEN - TULIK - at LILEE turn left to intercept R067 CHI to ROTAR	R105 VIC: MNM 4000 LILEE: MNM FL85



St Angelo

Italy - LIPH / TSF  
TREVISO

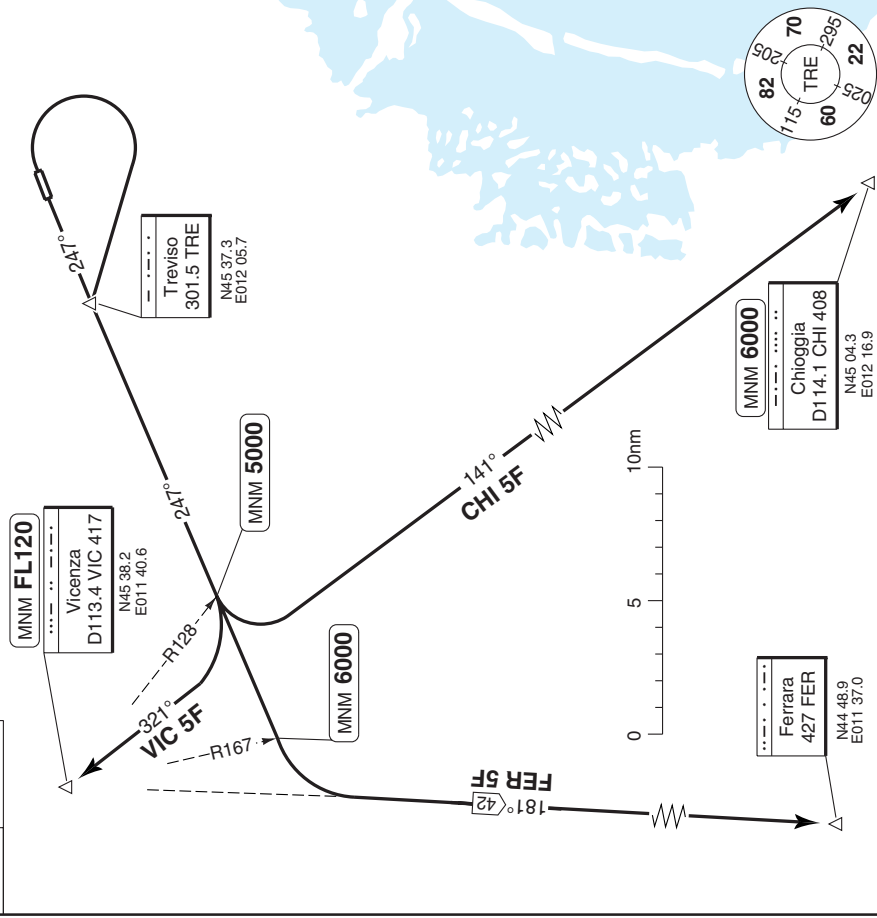
30 - 2 | 19 MAY 10

Italy - LIPH / TSF  
St Angelo **TREVISO**

**SID** West

Treviso TWR 118.7 122.1	APP/RAD 120.4 121.15 122.1	Padova CTL 125.9 134.75 135.0
-------------------------------	----------------------------------	-------------------------------------

TA 6000 AD Elev 59



SID	MNM CLIMB	Routing	Altitudes
<b>INITIAL CLIMB RWY 07</b>	6.71 %	After take off turn right to TRE - Follow 247° from TRE - follow SID	
<b>INITIAL CLIMB RWY 25</b>	5.75%	Climb on 247° to TRE - Follow 247° from TRE - follow SID	
<b>CHI 5F</b>		At R128 VIC turn left to intercept 141° / R321 CHI to CHI	R128 VIC: MNM 5000 CHI: MNM 6000
<b>FER 5F</b>		At R167 VIC turn left to intercept R181 VIC to FER	R128 VIC: MNM 5000 R167 VIC: MNM 6000
<b>VIC 5F</b>		At R128 VIC turn right to intercept 321° / R141 VIC to VIC	R128 VIC: MNM 5000 VIC: MNM FL120

© Navtech - liph2daorg

Change: Comms.

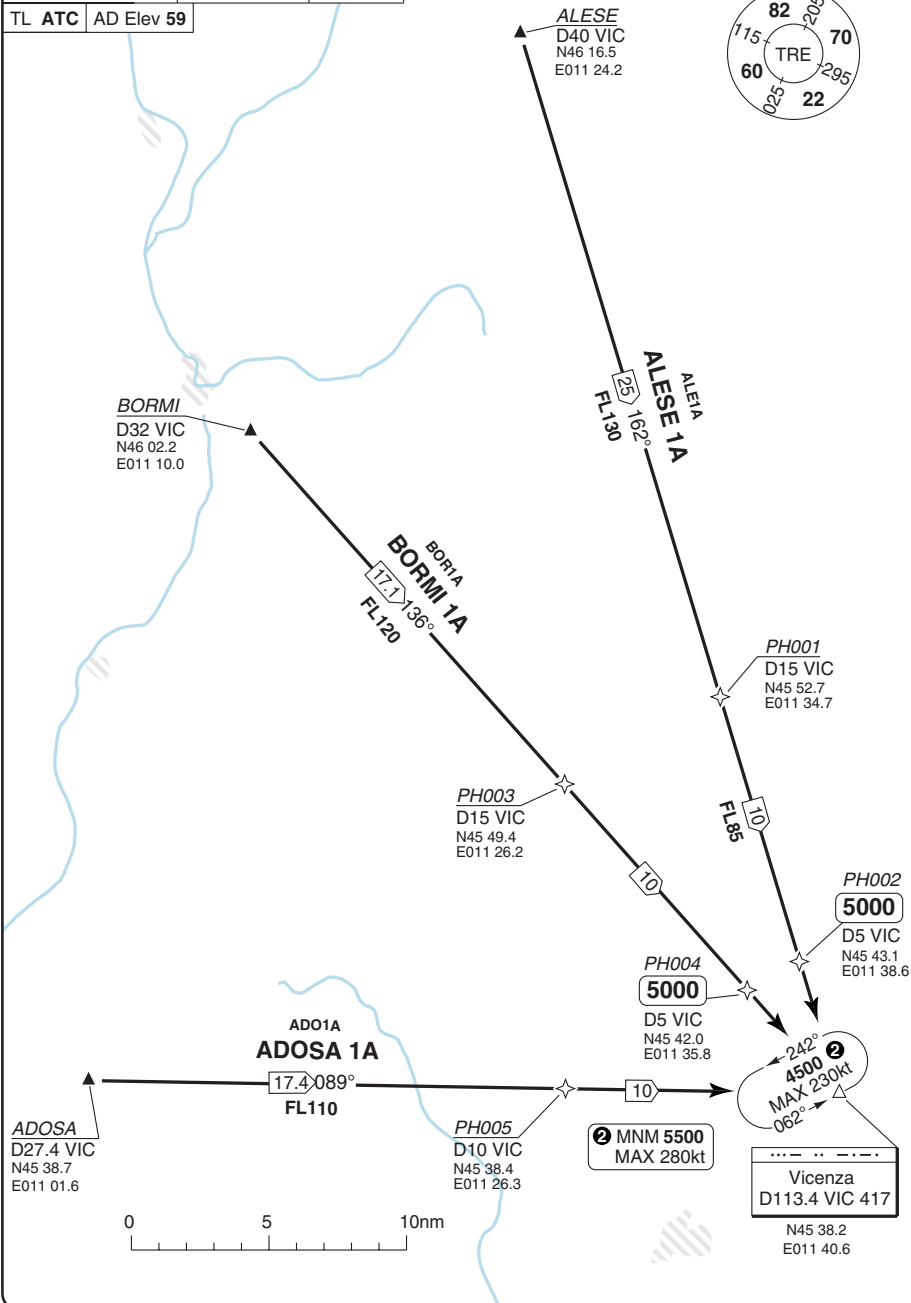
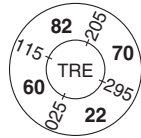
**THIS CHART IS A PART OF NAVIGRAPH NDAC AND IS INTENDED FOR FLIGHT SIMULATION USE ONLY**

# STAR Link Routes

## St Angelo **TREVI**

Treviso APP/RAD	Padova CTL	TWR
120.4 121.15	125.9	118.7
122.1		122.1

TL	ATC	AD Elev
		59



© Navitech - liph01aaorg0

Change: New chart.

**THIS CHART IS A PART OF NAVIGRAPH NDAC AND IS INTENDED FOR FLIGHT SIMULATION USE ONLY**

# STAR

# St Angelo TREVISO

Treviso APP/RAD 120.4 121.15 122.1	Padova CTL 125.9	TWR 118.7 122.1
--	---------------------	-----------------------

TL ATC AD Elev 59

② MNM 5500  
MAX 280kt

Vicenza  
D113.4 VIC 417  
N45 38.2  
E011 40.6

Treviso  
301.5 TRE  
N45 37.3  
E012 05.7

EDEMO  
N45 35.0  
E011 57.1

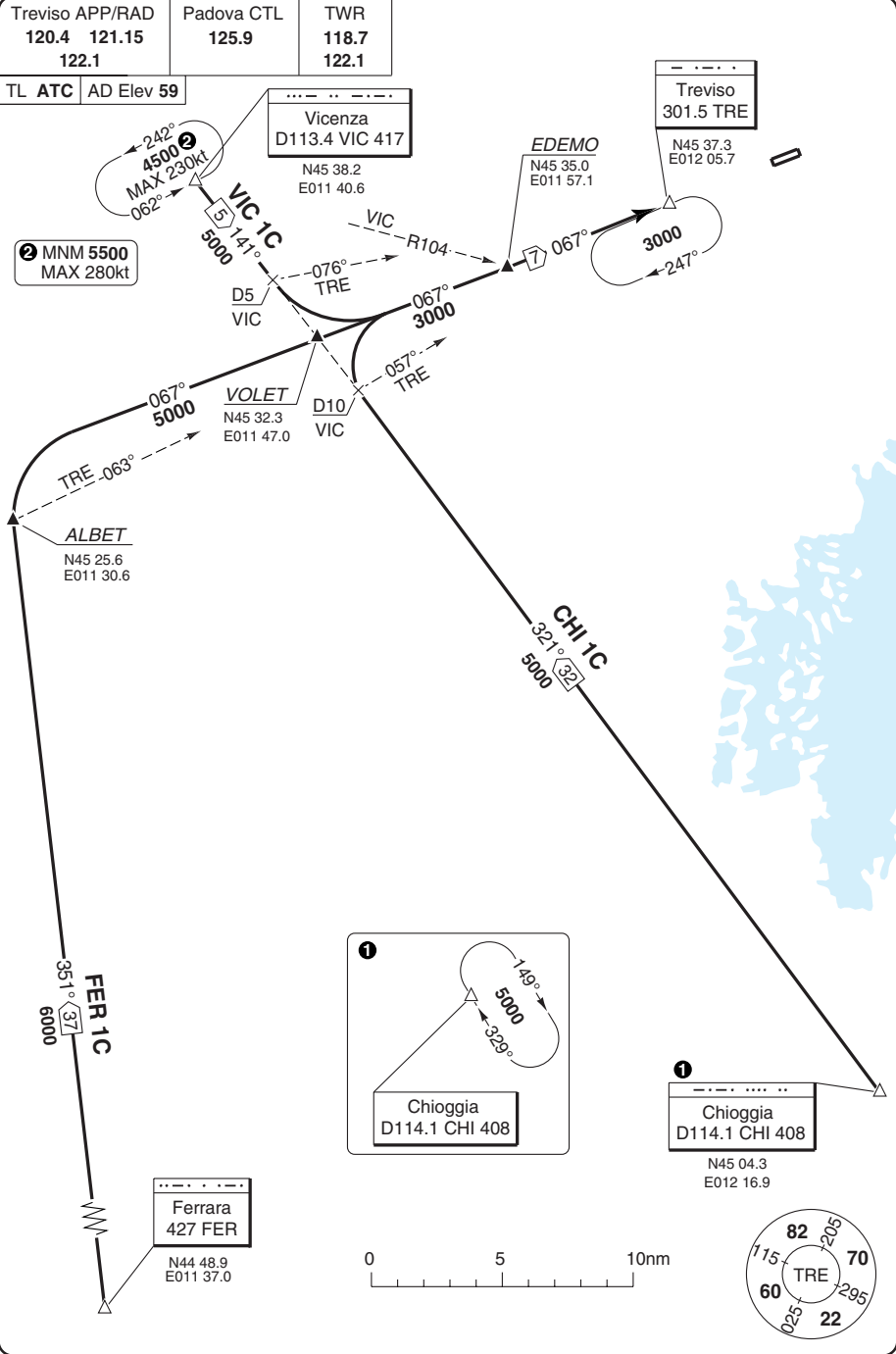
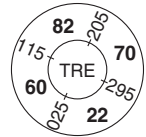
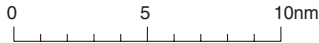
VOLET  
N45 32.3  
E011 47.0

ALBET  
N45 25.6  
E011 30.6

Chioggia  
D114.1 CHI 408

Chioggia  
D114.1 CHI 408  
N45 04.3  
E012 16.9

Ferrara  
427 FER  
N44 48.9  
E011 37.0



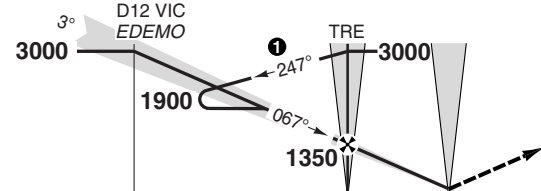
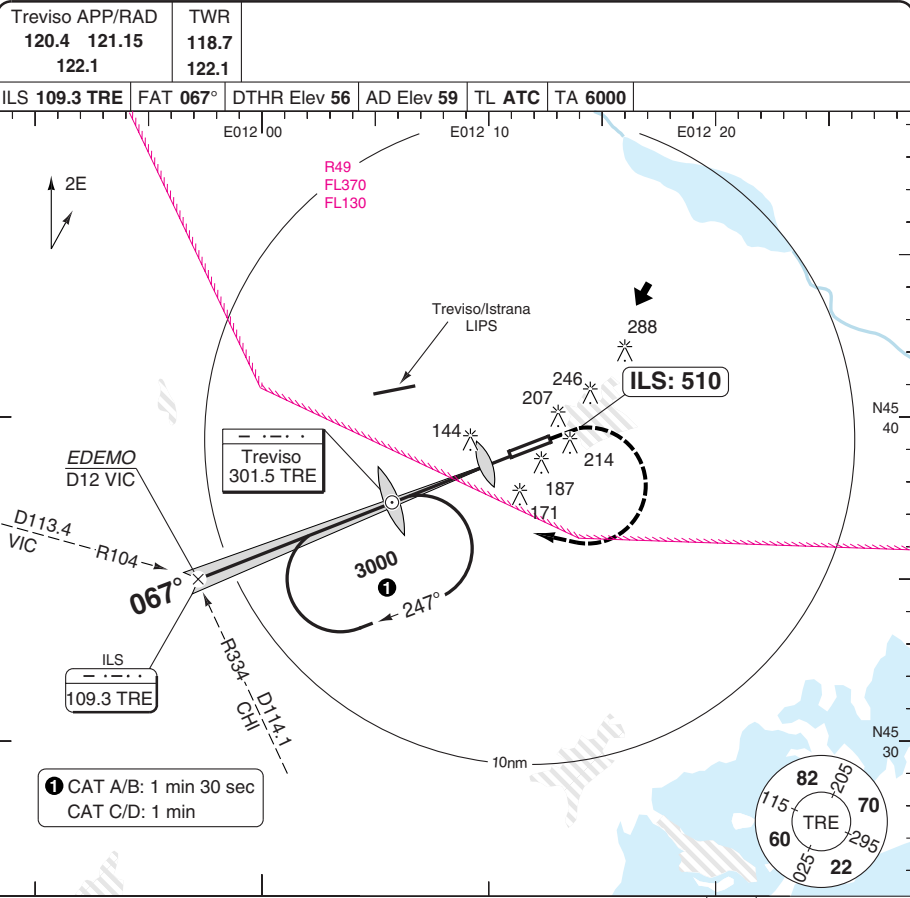
© Navitech - liph02aaorg0

Change: Renumbered.

**THIS CHART IS A PART OF NAVIGRAPH NDAC AND IS INTENDED FOR FLIGHT SIMULATION USE ONLY**

# ILS OR NDB RWY 07

# St Angelo TREVISO



Climb on 067°, as soon as practicable (or 510 on ILS missed approach)  
Turn right (MAX 185kt) to TRE at **3000**

nm	15	14	13	12	11	10	9	8	7	6	5	4	3	2	1	0
ACFT	<b>ILS</b>	<b>LOC a</b>	<b>NDB b</b>	<b>Circling c</b>			GS	80	100	120	140	160	LDA 2343x45 7686x148ft P 3° (62)			
A/B	410 (354) 900m	470 (420) 1200m		590 (530) 1.6km <b>d</b>			ROD 3.0°	420	550	660	770	870	7686x148ft P 3° (62)			
C	510 (453) 1400m	510 (460) 1400m	520 (470) 1500m	660 (600) 2.4km			FAF +20s	1210	1170	1140	1100	1070	7686x148ft P 3° (62)			
D				760 (700) 3.6km			+40s	1070	990	920	850	780	7686x148ft P 3° (62)			
							+60s	930	810	700	590	-	7686x148ft P 3° (62)			
							FAF-510 a	1:56	1:32	1:16	1:06	0:58	7686x148ft P 3° (62)			
							FAF-520 b	1:54	1:31	1:15	1:05	0:57	7686x148ft P 3° (62)			
							FAF-MAPt a	2:22	1:54	1:36	1:22	1:11	7686x148ft P 3° (62)			
							FAF-MAPt b	2:52	2:18	1:55	1:38	1:26	7686x148ft P 3° (62)			

**c** South of AD  
**d** CAT A: 570 (510) 1.5km

© Navtech - liph01iaip00

Reverse side blank

## JAR-OPS Landing Minima

St Angelo **TREVISO**

The following Minima is for Public Transport aircraft and conforms to JAR-OPS1 regulations.

STRAIGHT-IN APPROACH		C				D			
R/W	Procedure	DA/ MDA QNH ft	DH/ MDH QFE ft	RVR m	RVR No ALS m	DA/ MDA QNH ft	DH/ MDH QFE ft	RVR m	RVR No ALS m
07	ILS	<b>510</b>	460	800	1200	<b>510</b>	460	800	1200
07	LOC	<b>520</b>	460	1200	2000	<b>520</b>	460	1600	2000
07	NDB	<b>530</b>	470	1200	2000	<b>530</b>	470	1600	2000

Notes:

CIRCLING		C			D		
R/W	Procedure	MDA QNH ft	MDH QFE ft	Vis m	MDA QNH ft	MDH QFE ft	Vis m
07	All Procs (1)	<b>660</b>	600	2400	<b>760</b>	700	3600

Notes:

(1) South of Runway only.

TAKE-OFF		C		D	
Runway	Facilities	RVR	Vis	RVR	Vis
07/25 (1)	-	-	2000	-	2000

Notes:

(1) Ceiling 500ft

## JAR-OPS Landing Minima

St Angelo **TREVISO**

The following Minima is for Public Transport aircraft and conforms to JAR-OPS1 regulations.

STRAIGHT-IN APPROACH		A				B			
R/W	Procedure	DA/ MDA QNH ft	DH/ MDH QFE ft	RVR m	RVR No ALS m	DA/ MDA QNH ft	DH/ MDH QFE ft	RVR m	RVR No ALS m
07	ILS	<b>410</b>	360	800	1200	<b>410</b>	360	800	1200
07	LOC	<b>480</b>	420	900	1500	<b>480</b>	420	1000	1500
07	NDB	<b>530</b>	470	1000	1500	<b>530</b>	470	1200	1500

Notes:

CIRCLING		A			B		
R/W	Procedure	MDA QNH ft	MDH QFE ft	Vis m	MDA QNH ft	MDH QFE ft	Vis m
07	All Procs (1)	<b>570</b>	510	1500	<b>590</b>	530	1600

Notes:

(1) South of Runway only.

TAKE-OFF		A		B	
Runway	Facilities	RVR	Vis	RVR	Vis
07/25 (1)	-	-	2000	-	2000

Notes:

(1) Ceiling 500ft