

Airport information:

Country: Italy

City: ALGHERO

Coordinates: N 40° 37.9', E008 17.3

Elevation: 87

Customs: Customs 0700-2300, Other times PN

Fuel: Jet A1

RFF: CAT 7

hours: H24

Runways:

Runway 02

Takeoff length: 3000, Landing length: 3000

Runway 20

Takeoff length: 3000, Landing length: 3000

AERODROME

Alghero TWR
118.85

ATIS
125.025

AD Elev **87** ARP: N40 37.9 E008 17.3 RFF: CAT 7 AD HR: H24

E008 16

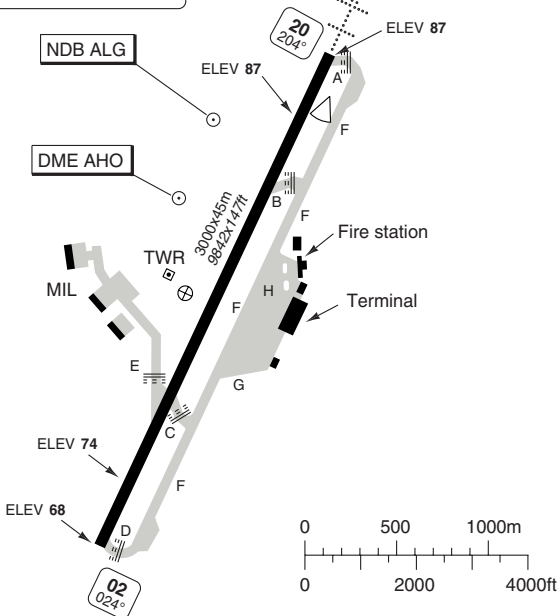
E008 17

E008 18

E008 19



THR Coordinates
RWY 02 N40 37.2 E008 17.0
RWY 20 N40 38.7 E008 17.9



N40
39

N40
38

N40
37

RWY	Slope	TORA m/ft	LDA m/ft	ALS	REDL	Additional
02	+0.2	3000 / 9842	3000 / 9842	-	avbl	P 3° L/R (52)
20	-0.2	3000 / 9842	3000 / 9842	H-C	avbl	P 3° L/R (56)

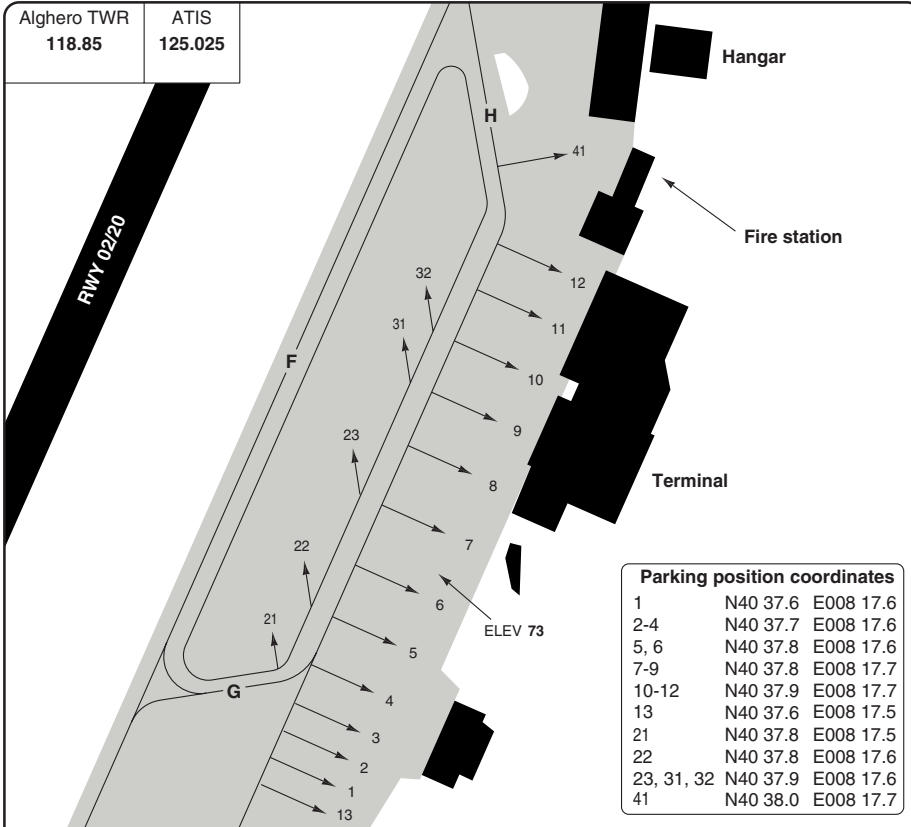
STATE

TAKE OFF MINIMA

RWY	Facilities	RVR		VIS	
		A	B C D	A	B C D
02	-	-	-	-	0.55 km
20	-	550m	-	-	0.4 km

AERODROME

Alghero TWR 118.85	ATIS 125.025
-----------------------	-----------------



Parking position coordinates		
1	N40 37.6	E008 17.6
2-4	N40 37.7	E008 17.6
5, 6	N40 37.8	E008 17.6
7-9	N40 37.8	E008 17.7
10-12	N40 37.9	E008 17.7
13	N40 37.6	E008 17.5
21	N40 37.8	E008 17.5
22	N40 37.8	E008 17.6
23, 31, 32	N40 37.9	E008 17.6
41	N40 38.0	E008 17.7

GENERAL INFORMATION

- AD RESTRICTIONS**
AD avbl for ACFT with MAX wingspan 52m/170ft .
AD avbl for ACFT with MAX length 61m/200ft .
- TRAFFIC NOTES**
RWY 02 right hand circuit.
- TAXI**
Back track prohibited on RWY 02/20 except on RWY ends for ACFT with MTOW 5700kg or less.
TWY F BTN TWY H and B avbl for ACFT with MAX wingspan 47m/154ft .
Taxi on TWY F with caution. MNM PWR, MNM speed, due to presence of debris.
- PARKING**
4.1 Marshalling mandatory.
- NIGHT FLIGHT RESTRICTION**
During HN ± 30min: VFR, circling and visual APCH RWY 02 forbidden.
LDG RWY 02 only NDB/DME APCH.

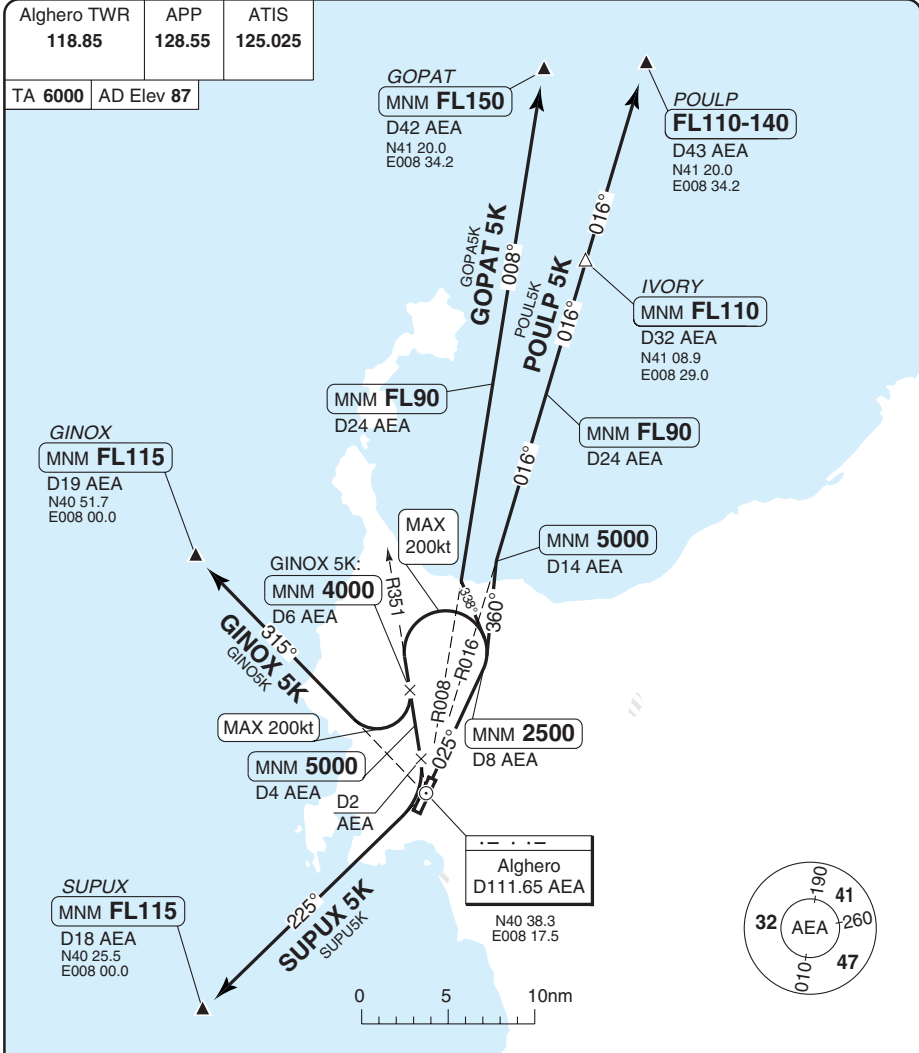
- START UP**
All IFR departing aircraft shall REQ start-up CLR to TWR before self-maneuvring and acft push-back.

SID RWY 02 VOR AEA North, West

Fertilia **ALGERO**

Alghero TWR 118.85	APP 128.55	ATIS 125.025
------------------------------	----------------------	------------------------

TA 6000 AD Elev 87



SPEED: MAX 200kt during first turn (except POULP 5K and GOPAT 5K).

SID	MNM Climb	Routeing	Altitude
INITIAL CLIMB	318ft/NM to 2500	Climb on R025 AEA - at D8 AEA turn left - follow SID	D8 AEA MNM 2500
GINOX 5K	318ft/NM to 2500	171°/R351 AEA - at D6 AEA turn right (MAX 200kt in turn) - R315 AEA - GINOX	R351/D6 AEA MNM 4000 GINOX MNM FL115
GOPAT 5K	318ft/NM to 2500	338° - R008 AEA - GOPAT	D24 AEA MNM FL90 GOPAT MNM FL150
POULP 5K	369ft/NM to FL110	360° - R016 AEA - IVORY - POULP	D14 AEA MNM 5000 D24 AEA MNM FL90 IVORY MNM FL110 POULP FL110-140
SUPUX 5K	318ft/NM to 2500	171°/R351 AEA - at D2 AEA turn right - R225 AEA - SUPUX	R351/D4 AEA MNM 5000 SUPUX MNM FL115

© Navitech - liea01daorg0

Change: DME distance

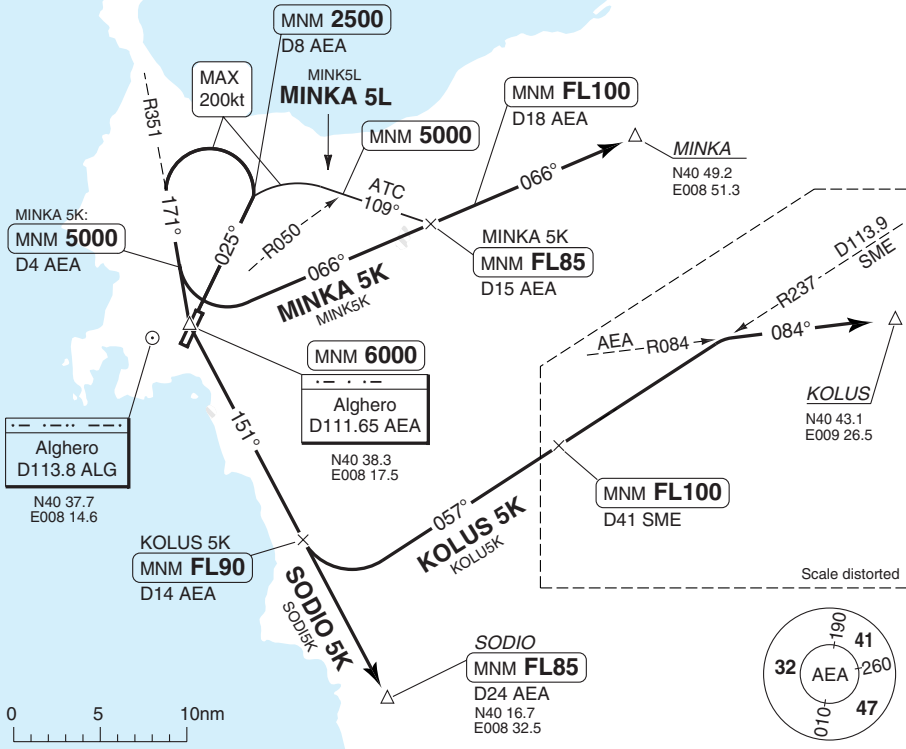
THIS CHART IS A PART OF NAVIGRAPH NDAC AND IS INTENDED FOR FLIGHT SIMULATION USE ONLY

SID RWY 02 VOR AEA South, East

Fertilia **ALGERO**

Alghero TWR 118.85	APP 128.55	ATIS 125.025
-----------------------	---------------	-----------------

TA 6000 AD Elev 87



SPEED: MAX 200kt during first turn.
MNM CLIMB GRADIENT: 5.2% to 2500.

SID	Routing	Altitudes
KOLUS 5K	Climb on R025 AEA - at D8 AEA turn left - R351 AEA - AEA - R151 AEA - at D14 AEA turn left - R237 SME - intercept R084 AEA - KOLUS	D8 AEA MNM 2500 AEA MNM 6000 D14 AEA MNM FL90 D41 SME MNM FL100
MINKA 5K	Climb on R025 AEA - at D8 AEA turn left - R351 AEA - at D4 AEA turn left - R066 AEA - MINKA	D8 AEA MNM 2500 D4 AEA MNM 5000 D15 AEA MNM FL85 D18 AEA MNM FL100
MINKA 5L (By ATC O/R)	Climb on R025 AEA - at D8 AEA turn right - 109° - R066 AEA - MINKA	D8 AEA MNM 2500 R050 AEA MNM 5000 D18 AEA MNM FL100
SODIO 5K	Climb on R025 AEA - at D8 AEA turn left - R351 AEA - AEA - R151 AEA - SODIO	D8 AEA MNM 2500 AEA MNM 6000 SODIO MNM FL85

© Navitech - liea02daorg0

Change: Alt restrictions.

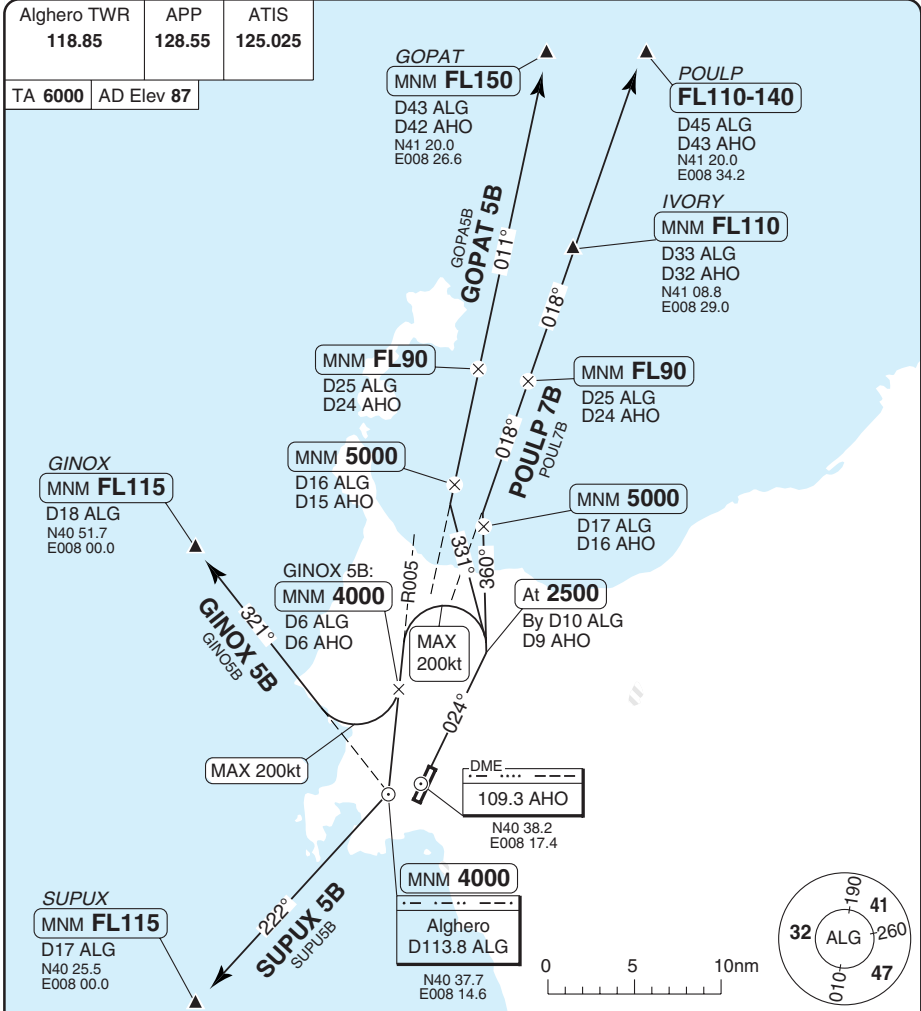
THIS CHART IS A PART OF NAVIGRAPH NDAC AND IS INTENDED FOR FLIGHT SIMULATION USE ONLY

SID RWY 02 VOR ALG North, West (By ATC)

Fertilia **ALGERO**

Alghero TWR 118.85	APP 128.55	ATIS 125.025
-----------------------	---------------	-----------------

TA 6000 AD Elev 87



SPEED: MAX 200kt during first turn (except POULP 7B and GOPAT 5B).

SID	MNM Climb	Routeing	Altitude
INITIAL CLIMB	See below	Climb on 024° - at 2500 (by D10 ALG/ D9 AHO) turn left - follow SID	D10 ALG/D9 AHO MNM 2500
GINOX 5B	300ft/NM to 2500	185°/R005 ALG - at D6 ALG/AHO turn right (MAX 200kt in turn) - R321 ALG - GINOX	R005/D6 ALG/AHO MNM 4000 GINOX MNM FL115
GOPAT 5B	360ft/NM to FL150	331° - R011 ALG - GOPAT	D16 ALG/D15 AHO MNM 5000 D25 ALG/D24 AHO MNM FL90 GOPAT MNM FL150
POULP 7B	360ft/NM to FL110	360° - R018 ALG - IVORY - POULP	D17 ALG/D16 AHO MNM 5000 D25 ALG/D24 AHO MNM FL90 IVORY MNM FL110 POULP FL110-140
SUPUX 5B	300ft/NM to 2500	185°/R005 ALG - ALG - R222 ALG - SUPUX	ALG MNM 4000 SUPUX MNM FL115

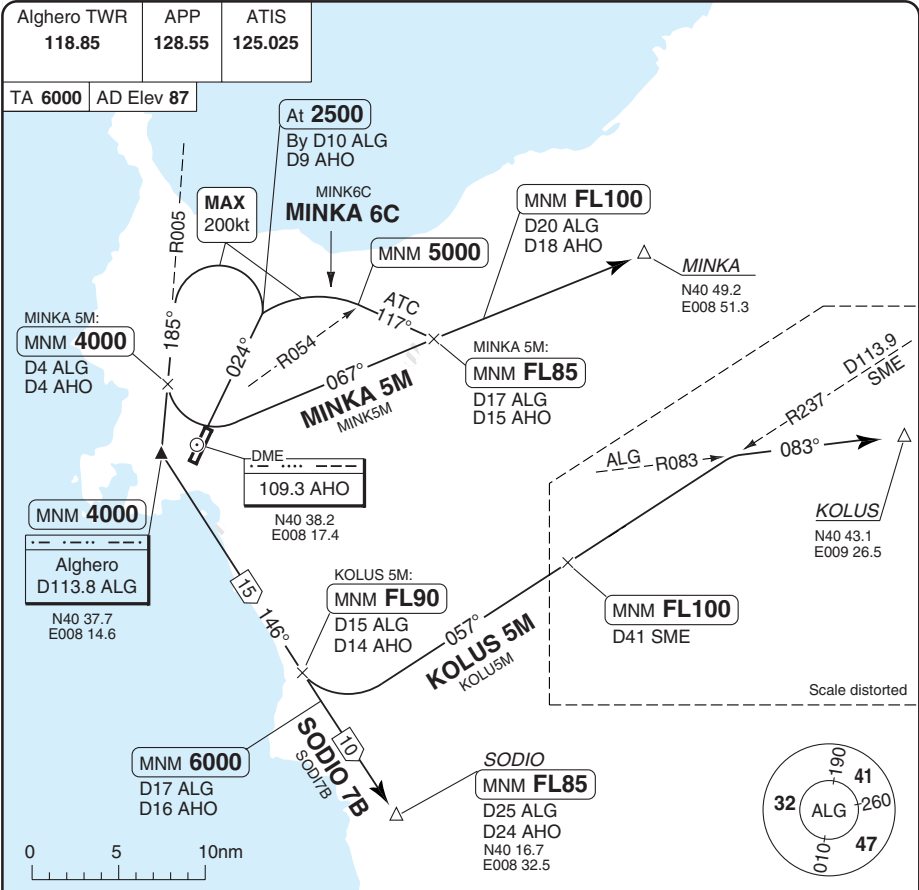
© Navitech - liea03daorg

Change: DME distance

THIS CHART IS A PART OF NAVIGRAPH NDAC AND IS INTENDED FOR FLIGHT SIMULATION USE ONLY

SID RWY 02 VOR ALG South, East (By ATC)

Fertilia **ALGERO**



SPEED: MAX 200kt during first turn.
MNM CLIMB GRADIENT: 4.9% to 2500.

SID	Routeing	Altitudes
KOLUS 5M (By ATC)	Climb on 024° - at 2500 (by D10 ALG/D9 AHO) turn left - R005 ALG - ALG - R147 ALG - at D15 ALG turn left - R237 SME - intercept R083 ALG - KOLUS.	D10 ALG/D9 AHO MNM 2500 ALG MNM 4000 D15 ALG/D14 AHO MNM FL90 D41 SME MNM FL100
MINKA 5M (By ATC)	Climb on 024° - at 2500 (by D10 ALG/D9 AHO) turn left - R005 ALG - at D4 ALG turn left - R067 ALG - MINKA.	D10 ALG/D9 AHO MNM 2500 D4 ALG/AHO MNM 4000 D17 ALG/D15 AHO MNM FL85 D20 ALG/D18 AHO MNM FL100
MINKA 6C (By ATC O/R)	Climb on 024° - at 2500 (by D10 ALG/D9 AHO) turn right - 117° - R067 ALG - MINKA.	D10 ALG/D9 AHO MNM 2500 R054 ALG MNM 5000 D20 ALG/D18 AHO MNM FL100
SODIO 7B (By ATC)	Climb on 024° - at 2500 (by D10 ALG/D9 AHO) turn left - R005 ALG - ALG - R147 ALG - SODIO.	D10 ALG/D9 AHO MNM 2500 ALG MNM 4000 D17 ALG/D16 AHO MNM 6000 SODIO MNM FL85

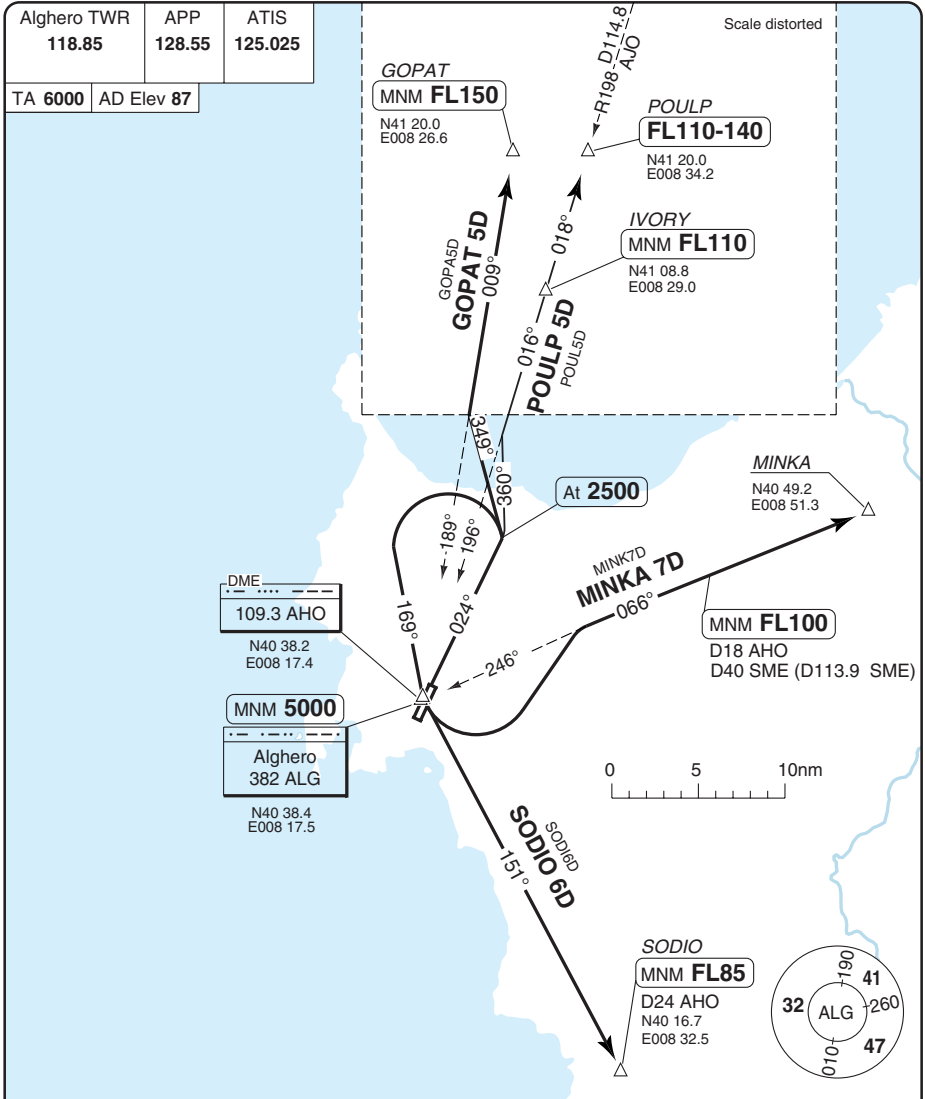
© Navitech - liea04daorg

Change: Alt restrictions.

THIS CHART IS A PART OF NAVIGRAPH NDAC AND IS INTENDED FOR FLIGHT SIMULATION USE ONLY

SID RWY 02 VOR ALG & AEA U/S

Fertilia **ALGERO**



SID	MNM Climb	Routing	Altitude
GOPAT 5D	5.9% to FL150	Climb on 024° - at 2500 turn left - 349° - turn right to 009° from ALG - GOPAT.	GOPAT MNM FL150
MINKA 7D	4.9% to 5000	Climb on 024° - at 2500 turn left - 169° to ALG - ALG - turn left to 066° from ALG - MINKA.	ALG MNM 5000 D18 AHO/D40 SME MNM FL100
POULP 6D (By ATC)	5.9% to FL150	Climb on 024° - at 2500 turn left - 360° - turn right to 016° from ALG - IVORY - R198 AJO - POULP.	IVORY MNM FL110 POULP FL110-140
SODIO 6D	4.9% to 5000	Climb on 024° - at 2500 turn left - 169° to ALG - ALG - 151° from ALG - SODIO.	ALG MNM 5000 SODIO MNM FL85

© Navitech - liea05daorg©

Change: New print.

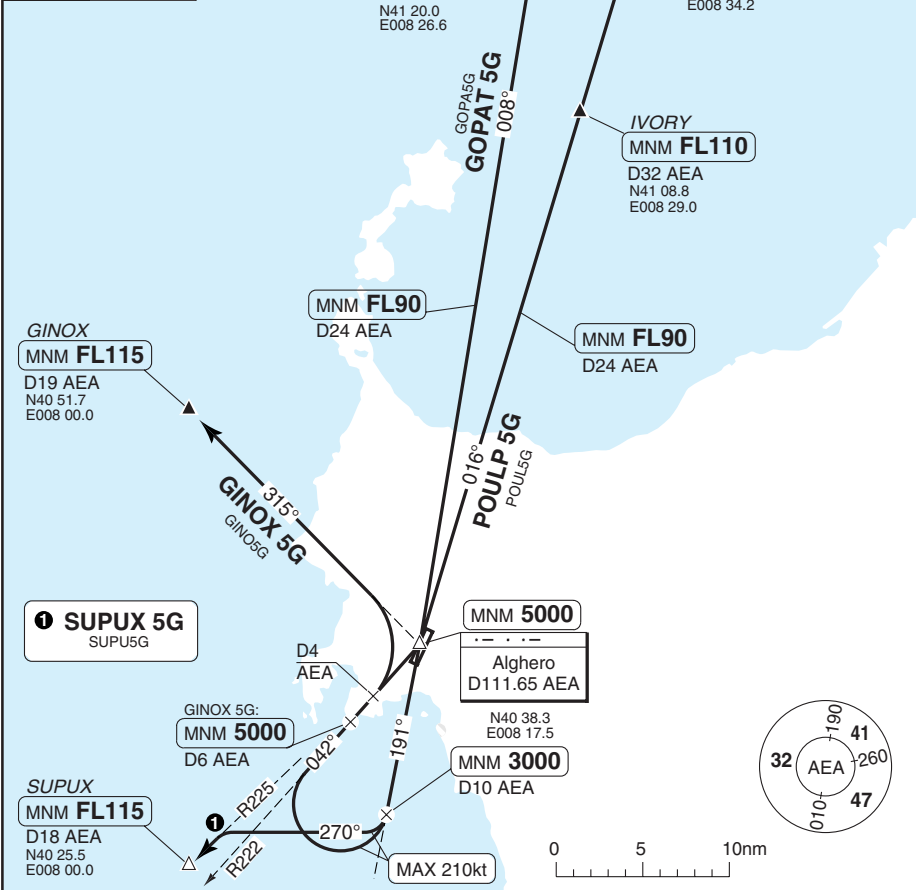
THIS CHART IS A PART OF NAVIGRAPH NDAC AND IS INTENDED FOR FLIGHT SIMULATION USE ONLY

SID RWY 20 VOR AEA North, West

Fertilia **ALGERO**

Alghero TWR 118.85	APP 128.55	ATIS 125.025
-----------------------	---------------	-----------------

TA 6000 AD Elev 87



SPEED: MAX 210kt during first turn.
MNM CLIMB GRADIENT: 352ft/NM to 3000.

SID	Routing	Altitude
INITIAL CLIMB	Climb on 191° - at D10 AEA turn right - follow SID.	D10 AEA MNM 3000
GINOX 5G	R222 AEA - at D4 AEA turn left - R315 AEA - GINOX.	R222/D6 AEA MNM 5000 GINOX MNM FL115
GOPAT 5G	R222 AEA - AEA - R008 AEA - GOPAT.	AEA MNM 5000 D24 AEA MNM FL90 GOPAT MNM FL150
POULP 5G	R222 AEA - AEA - R016 AEA - IVORY - POULP.	AEA MNM 5000 D24 AEA MNM FL90 IVORY MNM FL110 POULP FL110-140
SUPUX 5G	270° to intercept R225 AEA - SUPUX.	SUPUX MNM FL115

© Navitech - liea06daorgo

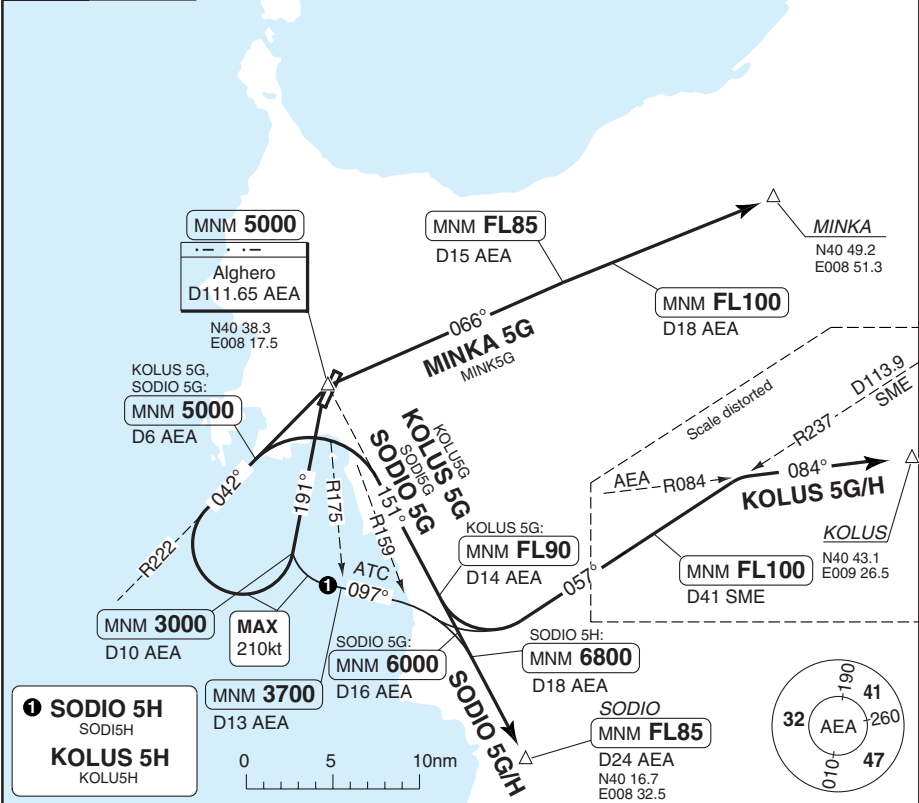
Change: DME distance

SID RWY 20 VOR AEA South, East

Fertilia **ALGERO**

Alghero TWR 118.85	APP 128.55	ATIS 125.025
-----------------------	---------------	-----------------

TA 6000 AD Elev 87



SPEED: MAX 210kt during first turn.

SID	MNM Climb	Routeing	Altitude
KOLUS 5G	5.8% to 3000	Climb on R191 AEA - at D10 AEA turn right - R222 AEA - at D6 AEA turn right - R151 AEA - at D14 AEA turn left - R237 SME - intcp R084 AEA - KOLUS.	D10 AEA MNM 3000 D6 AEA MNM 5000 D14 AEA MNM FL90 D41 SME MNM FL100
KOLUS 5H (By ATC O/R)	5.8% to 3000	Climb on R191 AEA - at D10 AEA turn left - R097 AEA - intercept R237 SME - intercept R084 AEA - KOLUS.	D10 AEA MNM 3000 D13/R175 AEA MNM 3700 D41 SME MNM FL100
MINKA 5G	5.8% to 3000	Climb on R191 AEA - at D10 AEA turn right - R222 AEA - AEA - R066 AEA - MINKA.	D10 AEA MNM 3000 AEA MNM 5000 D15 AEA MNM FL85 D18 AEA MNM FL100
SODIO 5G	5.8% to 3000	Climb on R191 AEA - at D10 AEA turn right - R222 AEA - at D6 AEA turn right - R151 AEA - SODIO.	D10 AEA MNM 3000 D6 AEA MNM 5000 D16 AEA MNM 6000 SODIO MNM FL85
SODIO 5H (By ATC O/R)	5.7% to 3000	Climb on R191 AEA - at D10 AEA turn left - R097 AEA - at R159 AEA turn right - R151 AEA - SODIO.	D10 AEA MNM 3000 D13/R175 AEA MNM 3700 D18 AEA MNM 6800 SODIO MNM FL85

© Navitech - liea07daorgo

Change: Alt restrictions.

THIS CHART IS A PART OF NAVIGRAPH NDAC AND IS INTENDED FOR FLIGHT SIMULATION USE ONLY

WEF 10 FEB 11

30 - 8 | 12 JAN 11

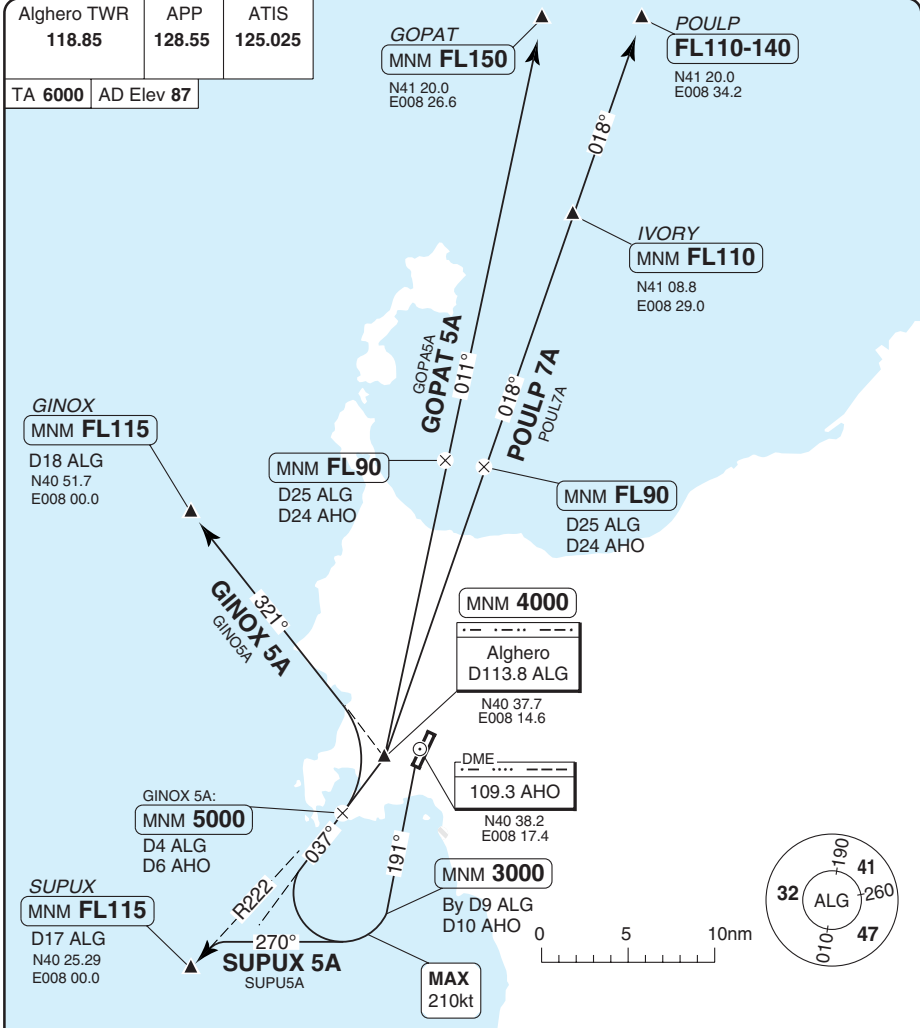
Italy - LIEA / AHO

SID RWY 20 VOR ALG North, West (by ATC)

Fertilia **ALGHERO**

Alghero TWR 118.85	APP 128.55	ATIS 125.025
-----------------------	---------------	-----------------

TA 6000 AD Elev 87



SPEED: MAX 210kt during first turn
MNM CLIMB GRADIENT: 352ft/NM to 3000

SID	Routeing	Altitude
INITIAL CLIMB	Climb on 191° - at 3000 (and by D9 ALG) turn right - follow SID	D9 ALG/D10 AHO MNM 3000
GINOX 5A	037°/R217 ALG - at D4 ALG turn left - R321 ALG - GINOX	R217/D4 ALG MNM 5000 GINOX MNM FL115
GOPAT 5A	037°/R217 ALG - ALG - R011 ALG - GOPAT	ALG MNM 4000 D25 ALG/D24 AHO MNM FL90 GOPAT MNM FL150
POULP 7A	037°/R217 ALG - ALG - R018 ALG - IVORY - POULP	ALG MNM 4000 D25 ALG/D24 AHO MNM FL90 IVORY MNM FL110 POULP FL110-140
SUPUX 5A	270° to intercept R222 ALG - SUPUX	SUPUX MNM FL115

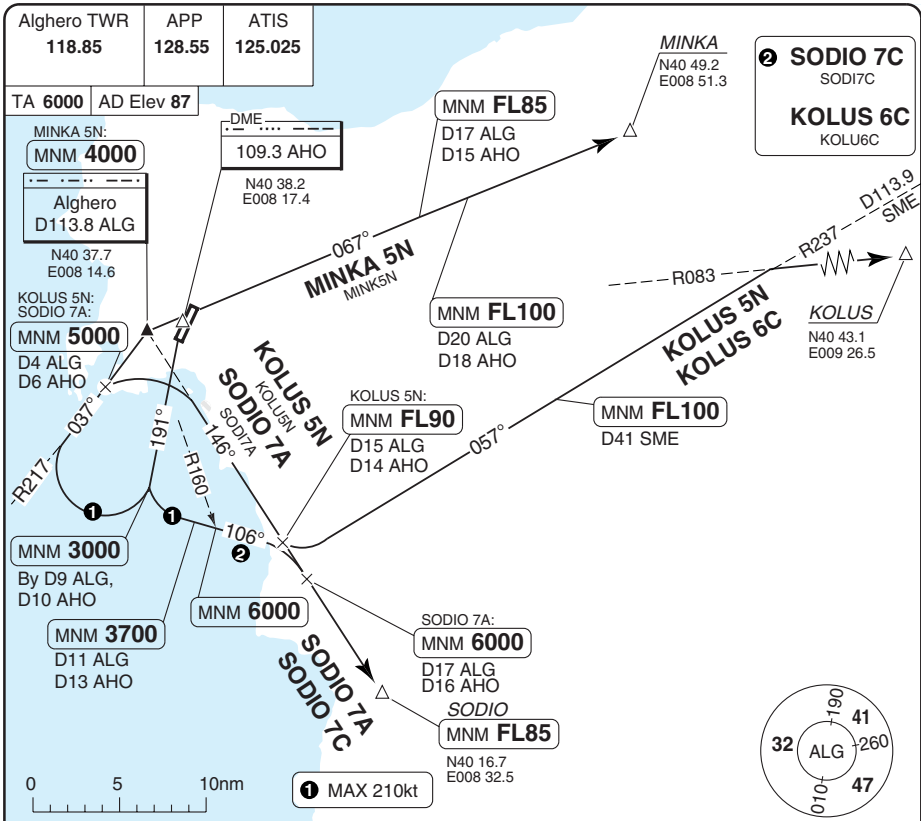
© Navtech - liea08daorgo

Change: Alt restrictions.

THIS CHART IS A PART OF NAVIGRAPH NDAC AND IS INTENDED FOR FLIGHT SIMULATION USE ONLY

SID RWY 20 VOR ALG South, East (by ATC)

Fertilia **ALGHERO**



SPEED: MAX 210kt during first turn.

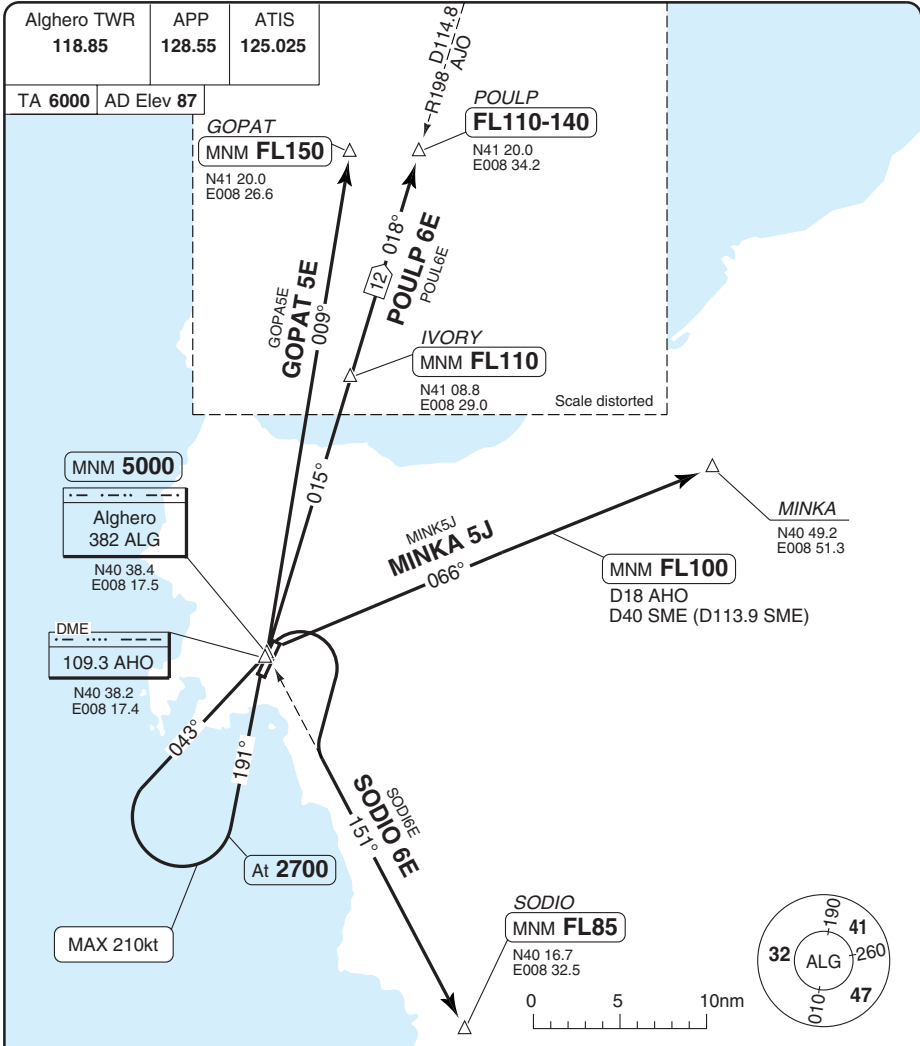
MNM CLIMB GRADIENT: 5.8% to 3000.

SID	Routeing	Altitudes
KOLUS 5N (By ATC)	Climb on 191° - at D9 ALG turn right - R217 ALG - at D4 ALG turn right - R146 ALG - at D15 ALG turn left - R237 SME - R083 ALG - KOLUS	D9 ALG/D10 AHO MNM 3000 D4 ALG/D6 AHO MNM 5000 D15 ALG/D14 AHO MNM FL90 D41 SME MNM FL100
KOLUS 6C (By ATC O/R)	Climb on 191° - at D9 ALG turn left - 106° - R237 SME - R083 ALG - KOLUS.	D9 ALG/D10 AHO MNM 3000 D11 ALG/D13 AHO MNM 3700 R160 ALG MNM 6000 D41 SME MNM FL100
MINKA 5N (By ATC)	Climb on 191° - at D9 ALG turn right - R217 ALG - ALG - R067 ALG - MINKA.	D9 ALG/D10 AHO MNM 3000 ALG MNM 4000 D17 ALG/D15 AHO MNM FL85 D20 ALG/D18 AHO MNM FL100
SODIO 7A (By ATC)	Climb on 191° - at D9 ALG turn right - R217 ALG - at D4 ALG turn right - R146 ALG - SODIO.	D9 ALG/D10 AHO MNM 3000 D4 ALG/D6 AHO MNM 5000 D17 ALG/D16 AHO MNM 6000 SODIO MNM FL85
SODIO 7C (By ATC O/R)	Climb on 191° - at D9 ALG turn left - 106° - R146 ALG - SODIO.	D9 ALG/D10 AHO MNM 3000 D11 ALG/D13 AHO MNM 3700 R160 ALG MNM 6000 SODIO MNM FL85

Change: Alt restrictions.

SID RWY 20 VOR ALG & AEA U/S

Fertilia **ALGERO**



SPEED: MAX 210kt during first turn.
MNM CLIMB GRADIENT: 4.9% to 5000.

SID	Routeing	Altitude
GOPAT 5E	Climb on 191° - at 2700 turn right - 043° - ALG - 008° from ALG - GOPAT.	ALG MNM 5000 GOPAT MNM FL150
MINKA 5J	Climb on 191° - at 2700 turn right - 043° - ALG - 066° from ALG - MINKA.	ALG MNM 5000 D18 AHO/D40 SME MNM FL100
POULP 6E	Climb on 191° - at 2700 turn right - 043° - ALG - 015° from ALG - IVORY - R198 AJO - POULP.	ALG MNM 5000 IVORY MNM FL110 POULP FL110-140
SODIO 6E	Climb on 191° - at 2700 turn right - 043° - ALG - 151° from ALG - SODIO.	ALG MNM 5000 SODIO MNM FL85

© Navitech - liea10claorgo

Change: New print.

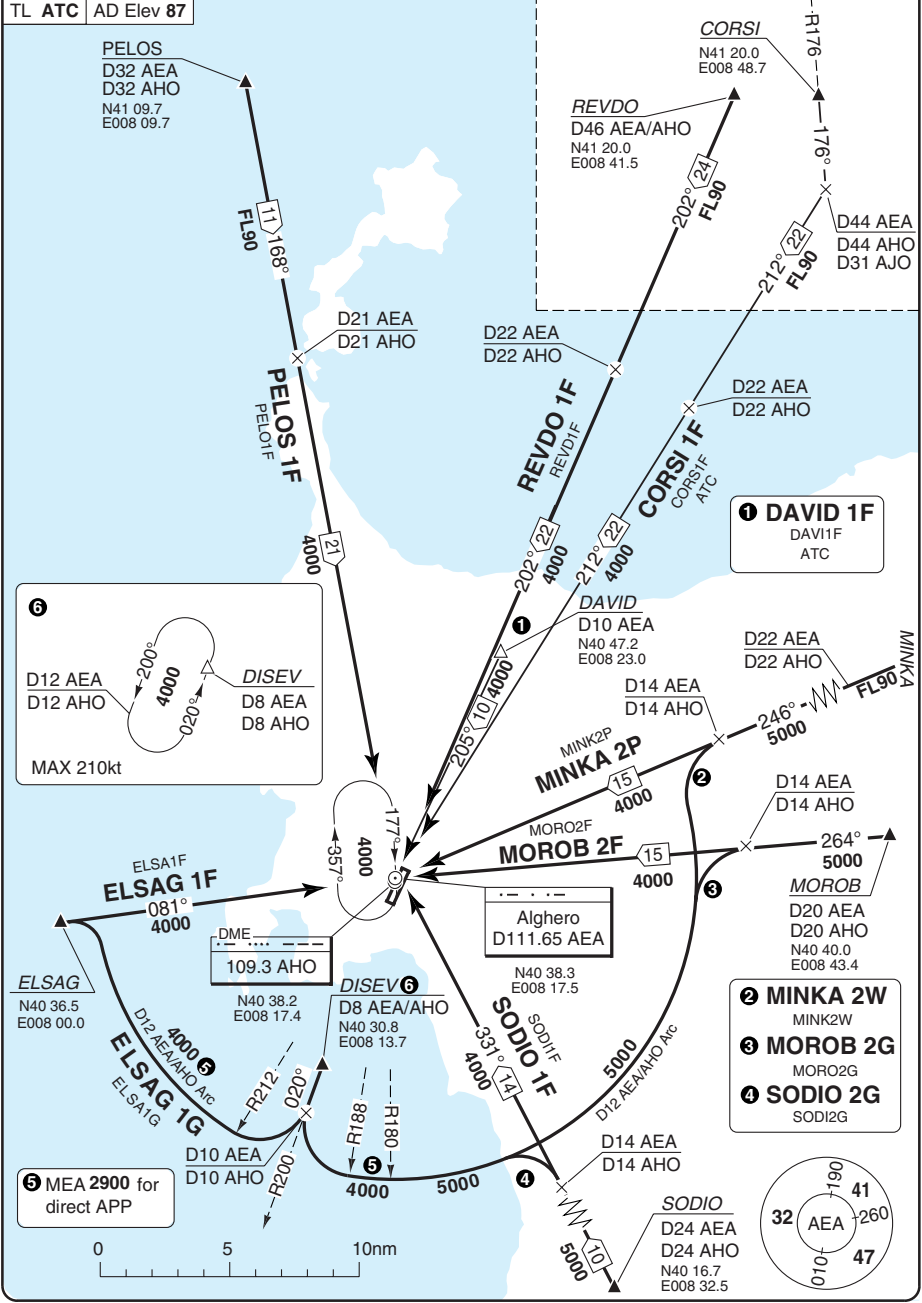
THIS CHART IS A PART OF NAVIGRAPH NDAC AND IS INTENDED FOR FLIGHT SIMULATION USE ONLY

Fertilia ALGERO

STAR RWY 02 VOR AEA

Alghero APP 128.55	TWR 118.85	ATIS 125.025
TL ATC	AD Elev 87	

Scale distorted



© Navtech - liea01aaorgg

Change: ALT restr

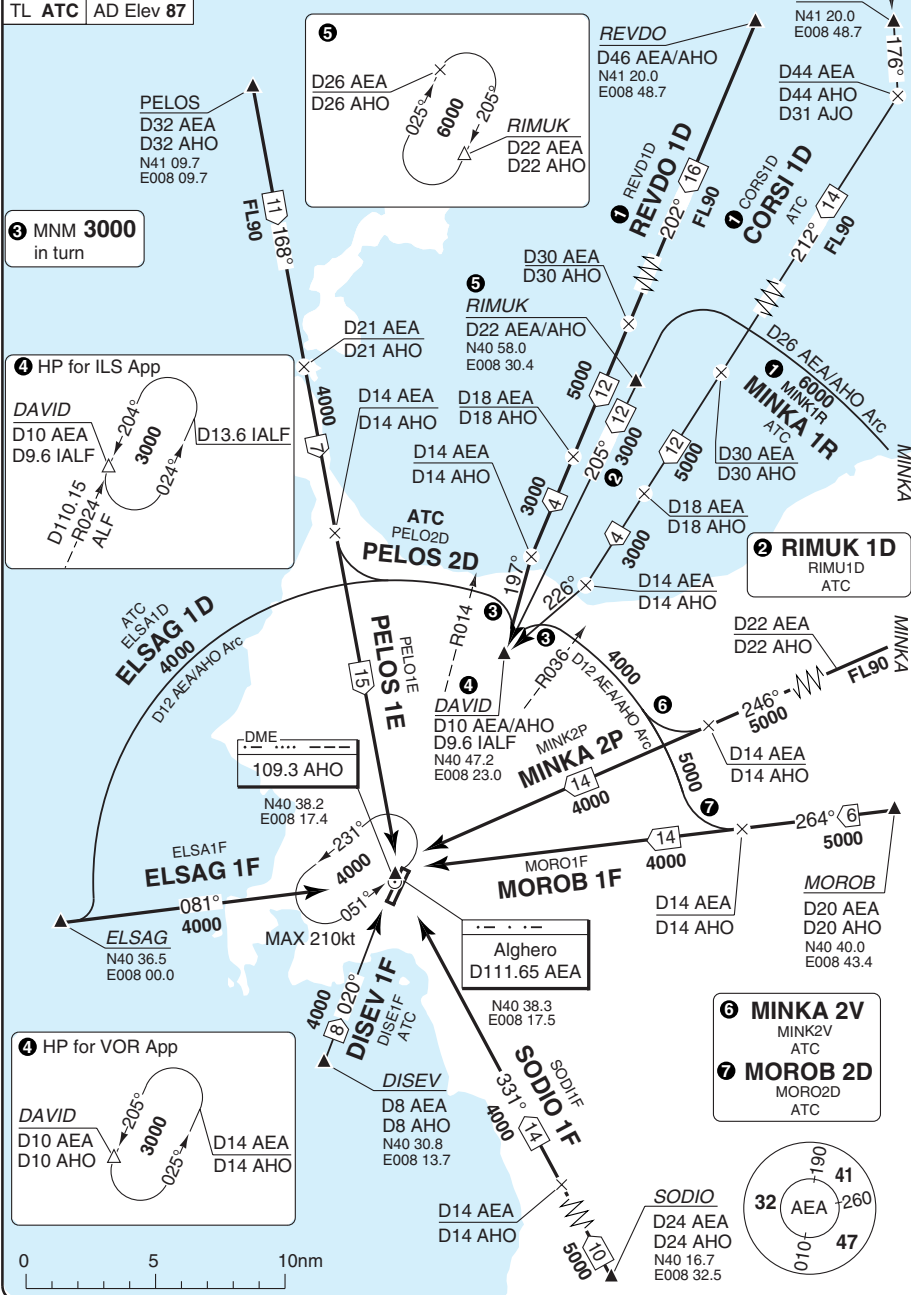
THIS CHART IS A PART OF NAVIGRAPH NDAC AND IS INTENDED FOR FLIGHT SIMULATION USE ONLY

STAR RWY 20 VOR AEA

Fertilia ALGERO

Alghero APP 128.55	TWR 118.85	ATIS 125.025
TL ATC	AD Elev 87	

1 Partially outside controlled airspace.



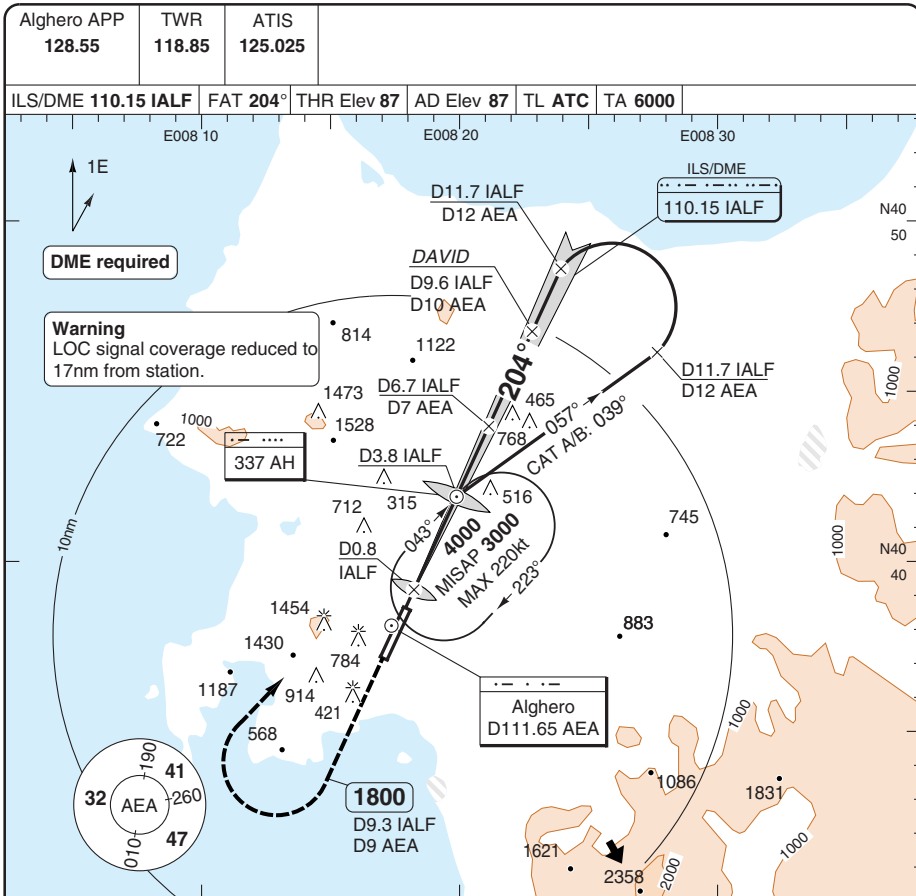
© Navtech - liea02aorgrg

Change: CORSI 1D, REVDO 1D

THIS CHART IS A PART OF NAVIGRAPH NDAC AND IS INTENDED FOR FLIGHT SIMULATION USE ONLY

ILS W RWY 20

Fertilia ALGERO



MAPt D0.7 IALF

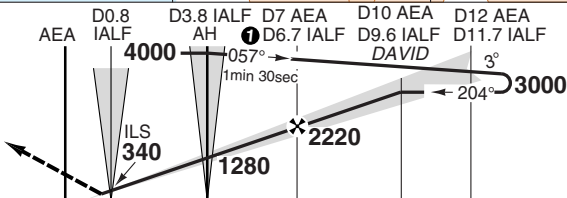
Climb on 204°, at D9.3

IALF or D9 AEA

MNM 1800.

turn right to AH climbing to 3000.

1 CAT A/B: 039°, 2min 30sec



TCH 56

ACFT	ILS+DME	LOC+DME	Circling a b	a East of RWY
A	480 (388) 1100m	600 (513) 1500m	700 (613) 1.5km	b Circling and landing RWY 02, Day OPS only.
B	490 (398) 1100m		700 (613) 1.6km	
C	500 (408) 1200m	600 (513) 1600m	1170 (1083) 2.4km	
D	510 (418) 1200m		1360 (1273) 3.6km	

DME IALF	3.0° ALT	LDA 3000x45 9842x147ft P 3° L/R (56)
9	2940	 FALS
8	2620	
7	2310	
6	1990	
5	1680	
4	1360	
3	1040	
2	720	

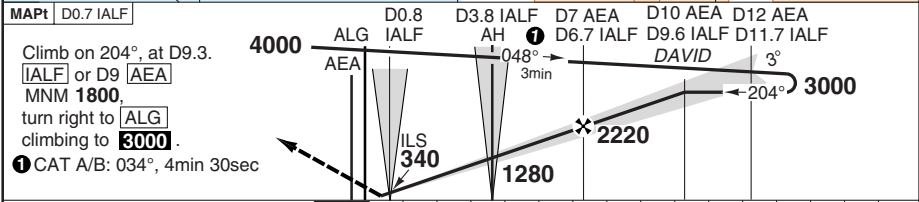
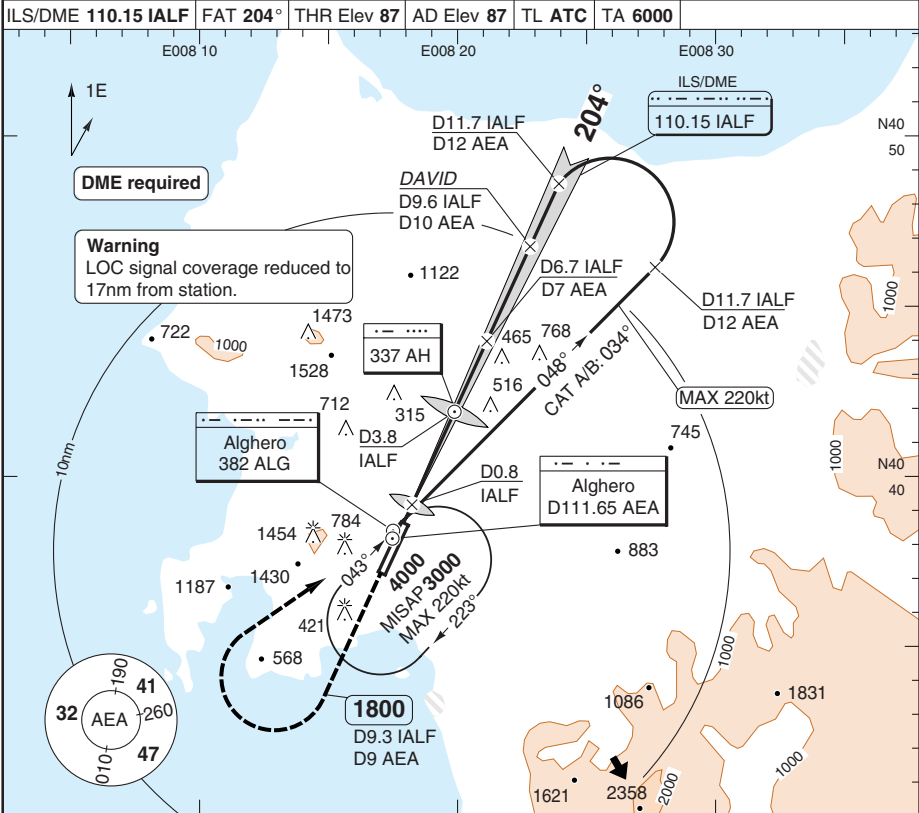
GS	80	100	120	140	160
ROD 3.0°	420	530	640	740	850
FAF-MAPt	4:30	3:36	3:00	2:34	2:15

Change: Note, MM Alt, Minima

ILS X RWY 20

Fertilia **ALGERO**

Alghero APP 128.55	TWR 118.85	ATIS 125.025				
ILS/DME 110.15 IALF	FAT 204°	THR Elev 87	AD Elev 87	TL ATC	TA 6000	



TCH 56

ACFT	ILS+DME	LOC+DME	Circling a b	a East of RWY	DME	3.0° ALT	LDA 3000x45
A	480 (388) 1100m	600 (513) 1500m	700 (613) 1.5km	b Circling and landing RWY 02, Day OPS only.	9	2940	9842x147ft P 3° L/R (56)
B	490 (398) 1100m		700 (613) 1.6km		8	2620	
C	500 (408) 1200m	600 (513) 1600m	1170 (1083) 2.4km		7	2310	
D	510 (418) 1200m		1360 (1273) 3.6km		6	1990	
GS	80	100	120	140	160		
ROD 3.0°	420	530	640	740	850		
FAF-MAPt	4:30	3:36	3:00	2:34	2:15		
						5	1680
						4	1360
						3	1040
						2	720

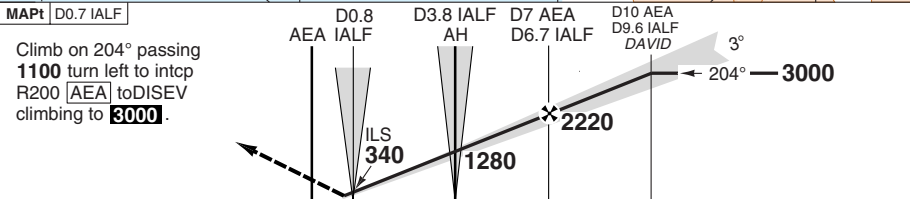
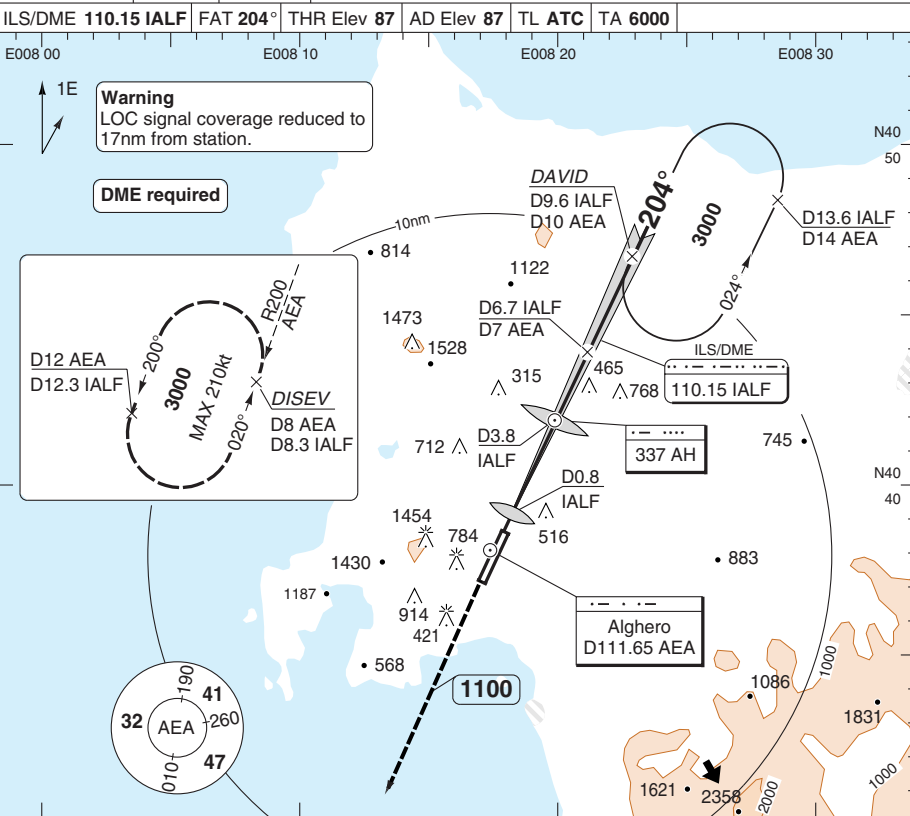
© Navitech - liea03iaip00

FALS

ILS Y RWY 20

Fertilia ALGERO

Alghero APP 128.55	TWR 118.85	ATIS 125.025	
ILS/DME 110.15 IALF		FAT 204°	THR Elev 87 AD Elev 87 TL ATC TA 6000



TCH 56

ACFT	ILS+DME	LOC+DME	Circling a b	a East of RWY	DME IALF	3.0° ALT	LDA 3000x45 9842x147ft P 3° L/R (56)	
A	480 (388) 1100m	600 (513) 1500m	700 (613) 1.5km	b Circling and landing RWY 02, Day OPS only.	9	2940		
B	490 (398) 1100m		700 (613) 1.6km		8	2620		
C	500 (408) 1200m	600 (513) 1600m	1170 (1083) 2.4km	7	2310			
D	510 (418) 1200m		1360 (1273) 3.6km	6	1990			
GS	80	100	120	140	160	5		1680
ROD 3.0°	420	530	640	740	850	4		1360
FAF-MAPt	4:30	3:36	3:00	2:34	2:15	3		1040
						2		720

© Navitech - liea04iarp00

Change: Note, MM Alt, Minima

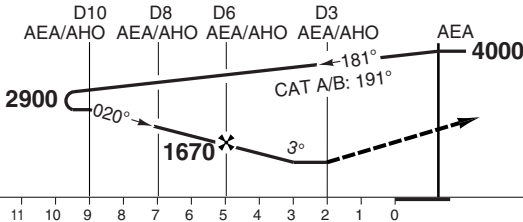
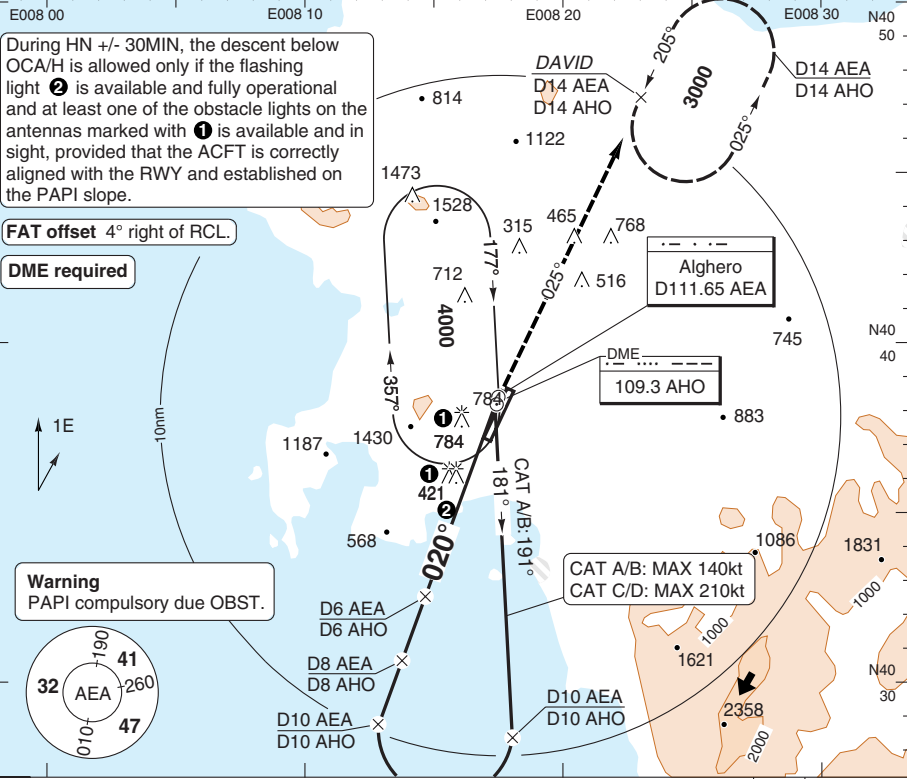
THIS CHART IS A PART OF NAVIGRAPH NDAC AND IS INTENDED FOR FLIGHT SIMULATION USE ONLY

VOR Y RWY 02

Fertilia ALGERO

Alghero APP 128.55	TWR 118.85	ATIS 125.025
------------------------------	----------------------	------------------------

VOR 111.65 AEA	FAT 020°	THR Elev 68	AD Elev 87	TL ATC	TA 6000
-----------------------	-----------------	--------------------	-------------------	---------------	----------------



ACFT	VOR+DME	Circling b	1500ft
A	1100 (1032) 5.0km a	1120 (1032) 5.0km	a Night OPS: 8.0km b East of RWY
B			
C			
D			

DME AEA/AHO	3.0° ALT	LDA 3000x45 9842x147ft P 3° L/R (52)
8	2310	
7	1990	
6	1670	
5	1350	

GS	80	100	120	140	160
ROD 3.0°	420	530	640	740	850
FAF-MAPt	2:15	1:48	1:30	1:17	1:08

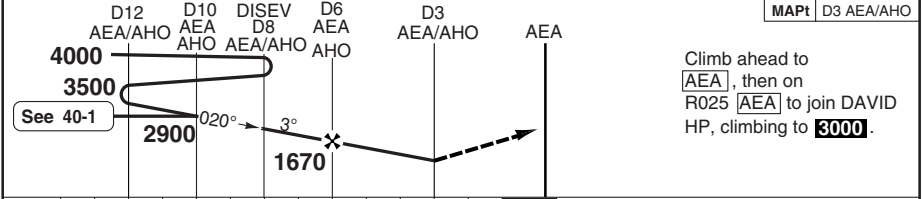
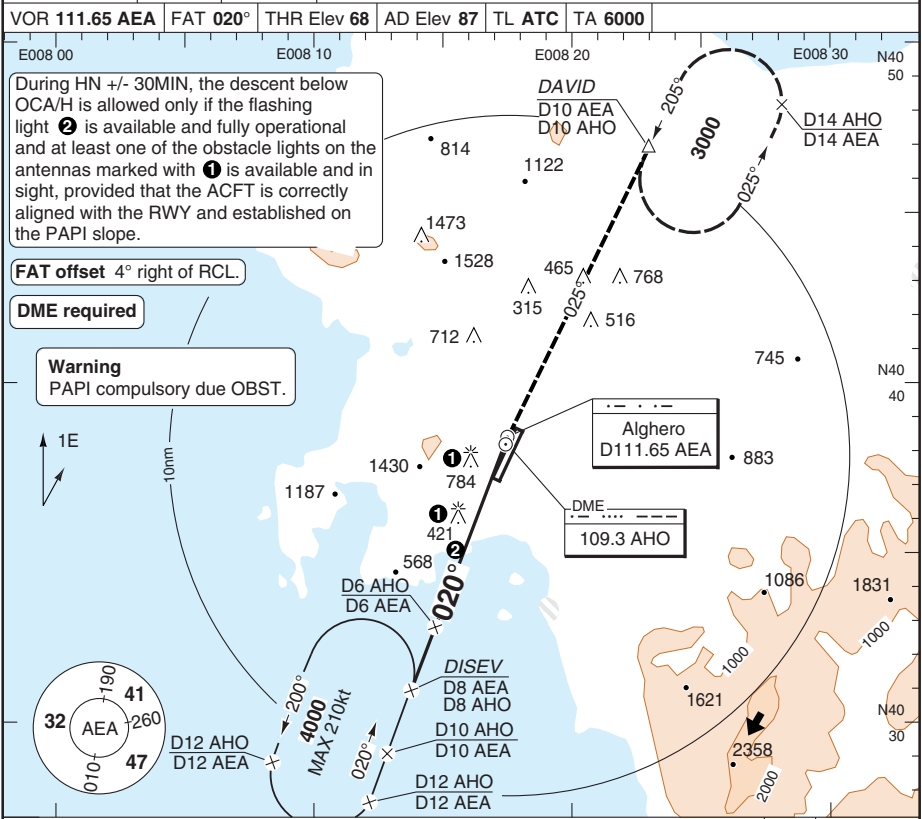
© Navtech - liea06iatp00

NALS

VOR Z RWY 02

Fertilia ALGERO

Alghero APP 128.55	TWR 118.85	ATIS 125.025				
VOR 111.65 AEA	FAT 020°	THR Elev 68	AD Elev 87	TL ATC	TA 6000	



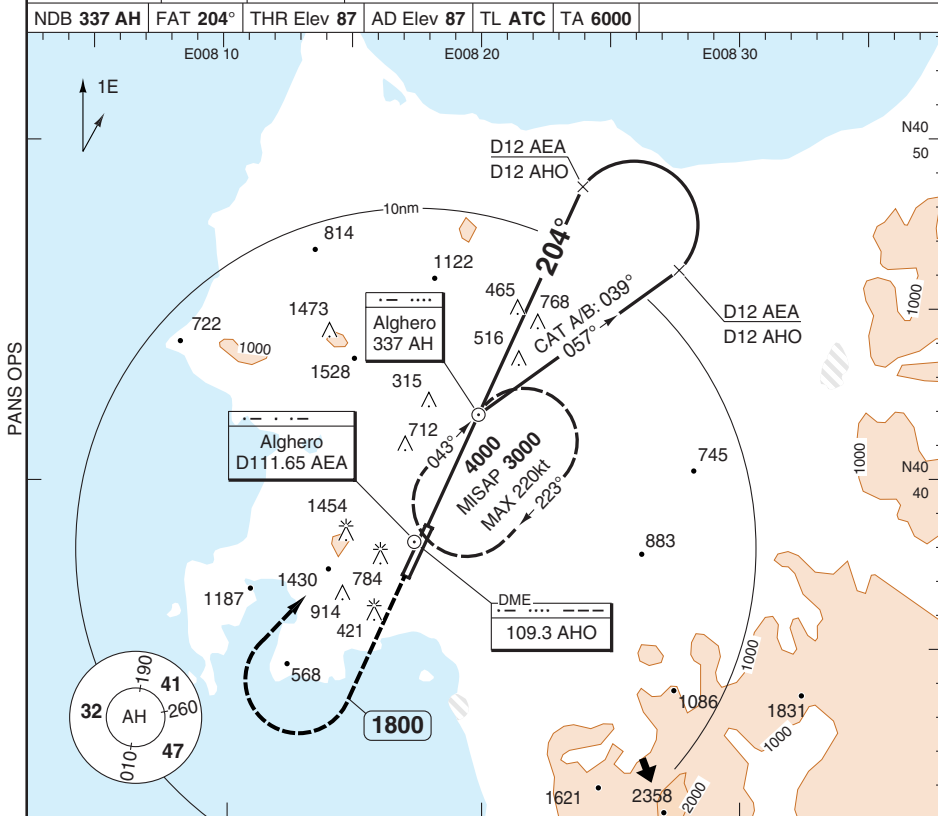
nm	13	12	11	10	9	8	7	6	5	4	3	2	1	0
ACFT	VOR+DME		Circling b		1500ft									
A					a Night OPS: 8.0km									
B	1100 (1032)		1120 (1032)		b East of RWY									
C	5.0km a		5.0km											
D			1170 (1083)											
			5.0km											
			1360 (1273)											
			5.0km											
GS	80	100	120	140	160									
ROD 3.0°	420	530	640	740	850									
FAF-MAPt	2:15	1:48	1:30	1:17	1:08									
DME AEA/AHO	8	7	6	5										
3.0° ALT	2310	1990	1670	1350										
LDA 3000x45	9842x147ft													
	P 3° L/R (52)													

© Navtech - liea07iaip00

NALS

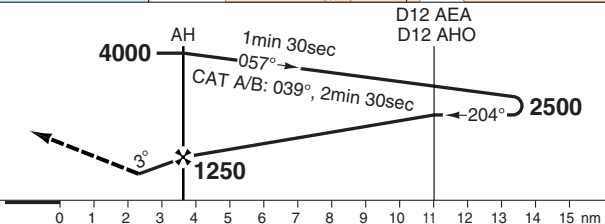
NDB RWY 20

Algero APP 128.55	TWR 118.85	ATIS 125.025				
NDB 337 AH	FAT 204°	THR Elev 87	AD Elev 87	TL ATC	TA 6000	



MAPt 0.9nm after AH

Climb on 204°, passing **1800** turn right to **AH** climbing to **3000**.



ACFT	NDB	Circling ^a _b
A	1100 (1013)	1100 (1013) 1.5km
B	1500m	1100 (1013) 1.6km
C	1100 (1013)	1700 (1083) 2.4km
D	2400m	1360 (1273) 3.6km

- ^a East of RWY
- _b Circling and landing RWY 02, Day OPS only.

LDA 3000x45
9842x147ft
P 3° L/R (56)



JAR-OPS Landing Minima

Fertilia ALGHERO

The following Minima is for Public Transport aircraft and conforms to JAR-OPS1 regulations.

STRAIGHT-IN APPROACH		C				D			
R/W	Procedure	DA/ MDA QNH ft	DH/ MDH QFE ft	RVR m	RVR No ALS m	DA/ MDA QNH ft	DH/ MDH QFE ft	RVR m	RVR No ALS m
02	VOR/DME Y, Z (1)	1100	1040	5000	N/A	1100	1040	5000	N/A
02	NDB/DME (1)	1100	1040	5000	N/A	1100	1040	5000	N/A
20	ILS/DME V, W, X, Y, Z	470	380	800	1200	480	390	800	1200
20	LOC/DME V, W, X, Y, Z	600	520	1200	2000	600	520	1600	2000
20	VOR/DME	620	540	1200	2000	620	540	1600	2000
20	NDB	1100	1020	1400	2000	1100	1020	1800	2000

Notes:

(1) Meteorological minima required: Ceiling 1500ft;
flight visibility not less than 5km (HJ) and 8km (HN),
ground visibility not less than 5km.

CIRCLING		C			D		
R/W	Procedure	MDA QNH ft	MDH QFE ft	Vis m	MDA QNH ft	MDH QFE ft	Vis m
02	VOR/DME, NDB/DME (1)	1100	1020	2400	1360	1280	3600
20	ILS/DME, LOC/DME (1)(2)	950	870	2400	1360	1280	3600
20	VOR/DME (1)(2)	950	870	2400	1360	1280	3600
20	NDB (1)(2)	1100	1020	2400	1360	1280	3600

Notes:

(1) East of Rwy only.
(2) Prohibited HN + / - 30 min.

TAKE-OFF		C		D	
Runway	Facilities	RVR	Vis	RVR	Vis
02 (1)	-	-	550	-	550
20 (1)	-	550	400	550	400

Notes:

(1) Low Visibility Procedures.

JAR-OPS Landing Minima

Fertilia ALGHERO

The following Minima is for Public Transport aircraft and conforms to JAR-OPS1 regulations.

STRAIGHT-IN APPROACH		A				B			
R/W	Procedure	DA/ MDA QNH ft	DH/ MDH QFE ft	RVR m	RVR No ALS m	DA/ MDA QNH ft	DH/ MDH QFE ft	RVR m	RVR No ALS m
02	VOR/DME Y, Z (1)	1100	1040	5000	N/A	1100	1040	5000	N/A
02	NDB/DME (1)	1100	1040	5000	N/A	1100	1040	5000	N/A
20	ILS/DME V, W, X, Y, Z	450	360	800	1200	460	370	800	1200
20	LOC/DME V, W, X, Y, Z	600	520	1000	1500	600	520	1200	1500
20	VOR/DME	620	540	1000	1500	620	540	1200	1500
20	NDB	1100	1020	1200	1500	1100	1020	1400	1500

Notes:

(1) Meteorological minima required: Ceiling 1500ft;
flight visibility not less than 5km (HJ) and 8km (HN),
ground visibility not less than 5km.

CIRCLING		A			B		
R/W	Procedure	MDA QNH ft	MDH QFE ft	Vis m	MDA QNH ft	MDH QFE ft	Vis m
02	VOR/DME, NDB/DME (1)	1100	1020	1500	1100	1020	1600
20	ILS/DME, LOC/DME (1)(2)	700	620	1500	700	620	1600
20	VOR/DME (1)(2)	700	620	1500	700	620	1600
20	NDB (1)(2)	1100	1020	1500	1100	1020	1600

Notes:

(1) East of Rwy only.
(2) Prohibited HN + / - 30 min.

TAKE-OFF		A		B	
Runway	Facilities	RVR	Vis	RVR	Vis
02 (1)	-	-	550	-	550
20 (1)	-	550	400	550	400

Notes:

(1) Low Visibility Procedures.