

Airport information:

Country: Greece

City: TANAGRA

Coordinates: N 38° 20.0', E023 33.0

Elevation: 485

Customs:

Fuel: JP4, 100LL

RFF: CAT 6

hours: HJ, PPR

Runways:

Runway 10

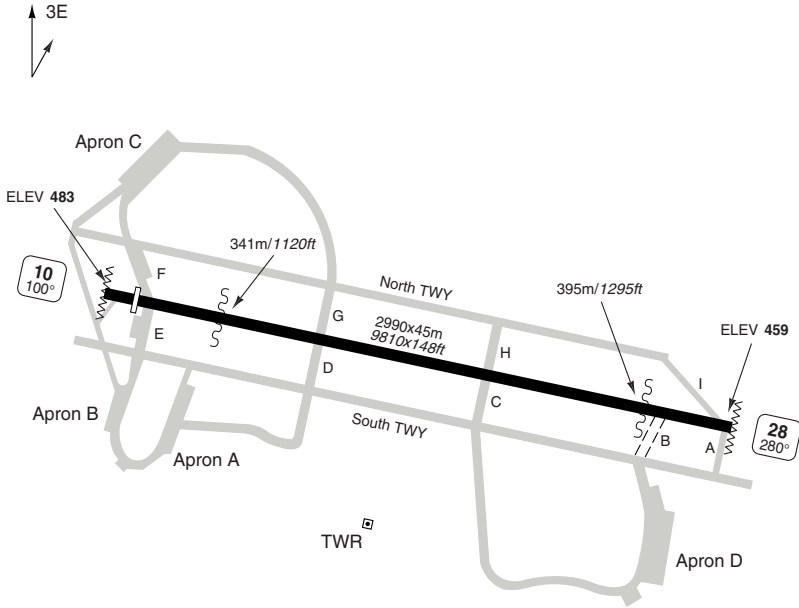
Takeoff length: 2990, Landing length: 2840

Runway 28

Takeoff length: 2990, Landing length: 2990

AERODROME

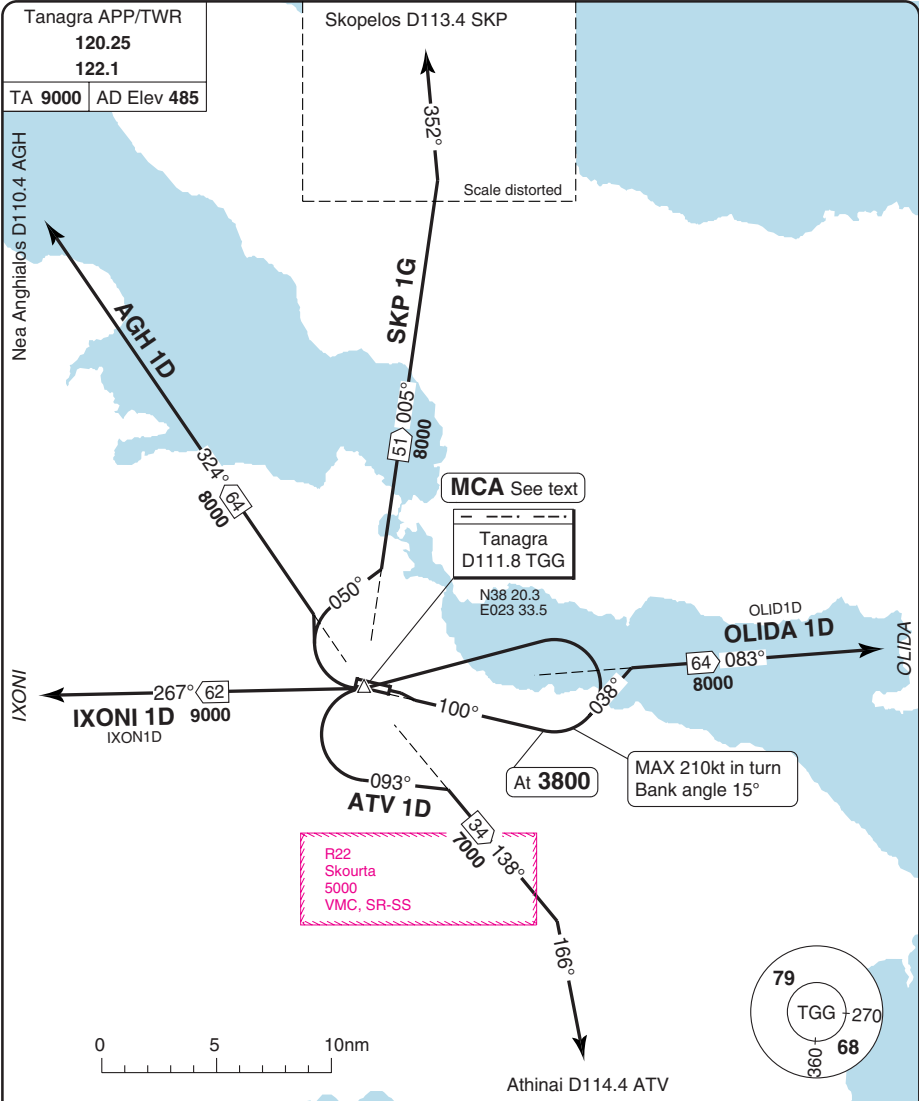
Tanagra APP/TWR 120.25 122.1			
AD Elev 485	ARP: N38 20.0 E023 33.0	RF: CAT 6	AD HR: HJ, PPR



RWY	Slope	TORA m/ft	LDA m/ft	ALS	REDL	Additional
10	-0.3	2990 / 9809	2840 / 9317	-	avbl	P 3.1°
28	+0.3	2990 / 9809	2990 / 9809	avbl	avbl	P 2.5°

EU OPS		TAKE OFF MINIMA	
RWY	Facilities	RVR A B C D	
10/28	RCL (day only) or RCL + REDL	400m	
	NIL (day only)	500m	

SID RWY 10

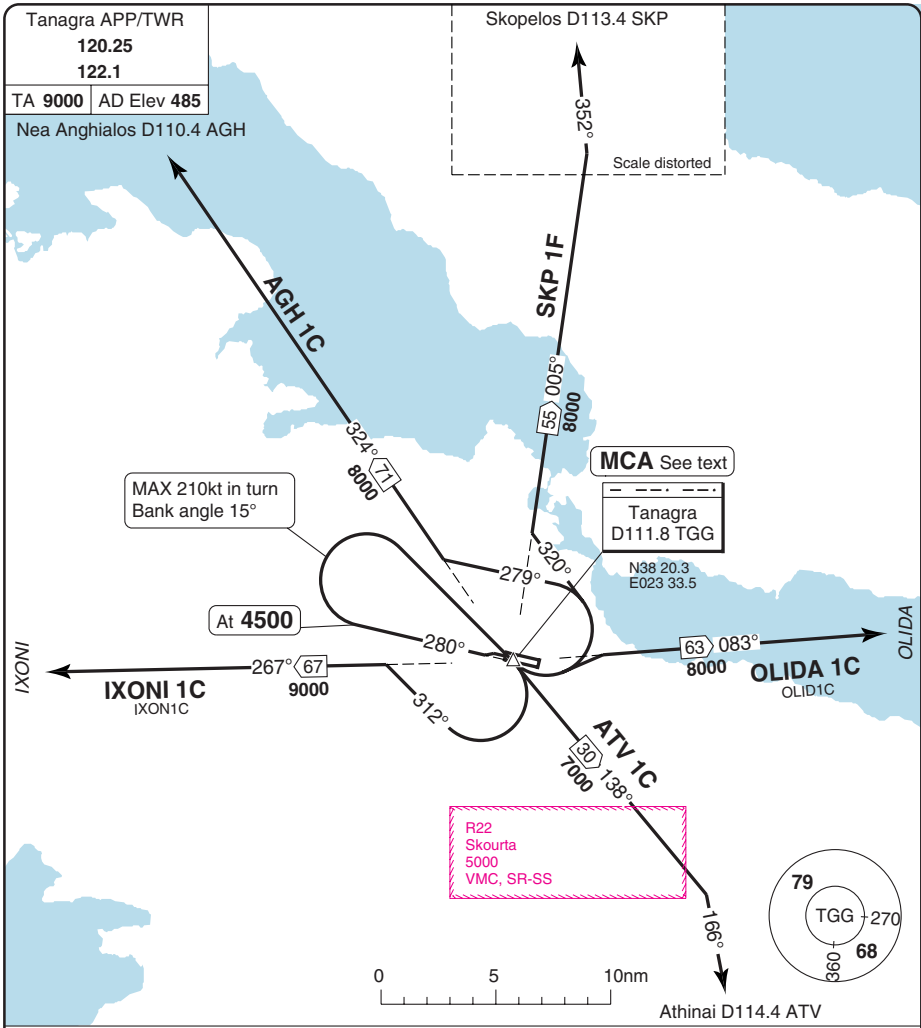


SPEED: MAX 210kt for initial turn, bank angle 15°.

SID	Routeing	Altitudes
AGH 1D	Climb on R100 TGG - at 3800 turn left - TGG - turn right - intcp R324 TGG - AGH.	TGG MNM 8000
ATV 1D	Climb on R100 TGG - at 3800 turn left - TGG - turn left to 093° - intcp R138 TGG - right to 166°/R346 ATV - ATV.	TGG MNM 7000
IXONI 1D	Climb on R100 TGG - at 3800 turn left - TGG - R267 TGG - IXONI.	TGG MNM 9000
OLIDA 1D	Climb on R100 TGG - at 3800 turn left - intcp R083 TGG - OLIDA.	
SKP 1G	Climb on R100 TGG - at 3800 turn left - TGG - turn left to 050° - intcp R005 TGG - left to 352°/R172 SKP - SKP.	TGG MNM 8000

Change: New

SID RWY 28



SPEED: MAX 210kt for initial turn, bank angle 15°.

MNM CLIMB GRADIENT: 5.9% to 3600.

SID	Routeing	Altitudes
AGH 1C	Climb on R280 TGG - at 4500 turn right to TGG - turn left to 279° - intcp R324 TGG - AGH.	TGG MNM 8000
ATV 1C	Climb on R280 TGG - at 4500 turn right to TGG - turn right - R138 TGG - right to 166°/R346 ATV - ATV.	TGG MNM 7000
IXONI 1C	Climb on R280 TGG - at 4500 turn right to TGG - turn right to 312° - intcp R267 TGG - IXONI.	TGG MNM 9000
OLIDA 1C	Climb on R280 TGG - at 4500 turn right to TGG - turn left - intcp R083 TGG - OLIDA.	TGG MNM 8000
SKP 1F	Climb on R280 TGG - at 4500 turn right to TGG - turn left to 320° - intcp R005 TGG - left to 352°/R172 SKP - SKP.	TGG MNM 8000

© Navitech - lgtg02daorg

Change: New

THIS CHART IS A PART OF NAVIGRAPH NDAC AND IS INTENDED FOR FLIGHT SIMULATION USE ONLY

© Navtech - lgtg01aaorg0

Tanagra APP/TWR

120.25

122.1

TL ATC AD Elev 485

Nea Anghialos

AGH 2E
6A 143°
8000

Skopelos

26 172°
8000

SKP 2D
25 190°
8000

OMIRO
N38 44.9
E023 40.3



1 OLIDA 2B:
See 50-1

D97
Koskina
FL240
NOTAM

Tanagra
D111.8 TGG
N38 20.3
E023 33.5

D7 TGG
232°
MAX 13000
8000

IAF
D12
TGG

MAX 255kt in turn

1 OLIDA 2B: IAF
D29
TGG

OLID2A/2B
OLIDA 2A/2B
263° 33
8000

OLIDA

IXON2A
IXONI 2A
62 087°
9000

IXONI

R095

D7
TGG

OLIDA 2A
275° 38

D27 TGG Arc

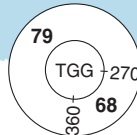
ATV 2A
13 318°
8000

ABLON
N38 10.2
E023 44.1

R22
Skourta
5000
VMC, SR-SS

Athinaí
347° 16
8000

R23A
Marathonas 1
5000
VMC, SR-SS



STAR RWY 28

40-1 | 21 JAN 10

TANAGRA

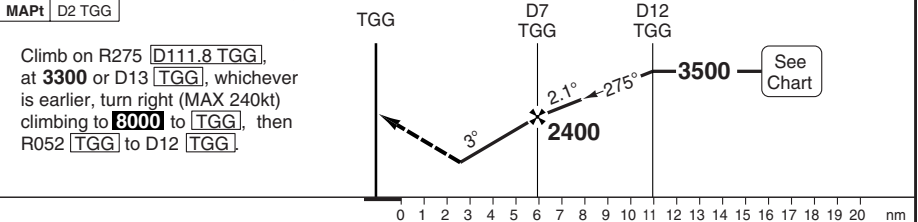
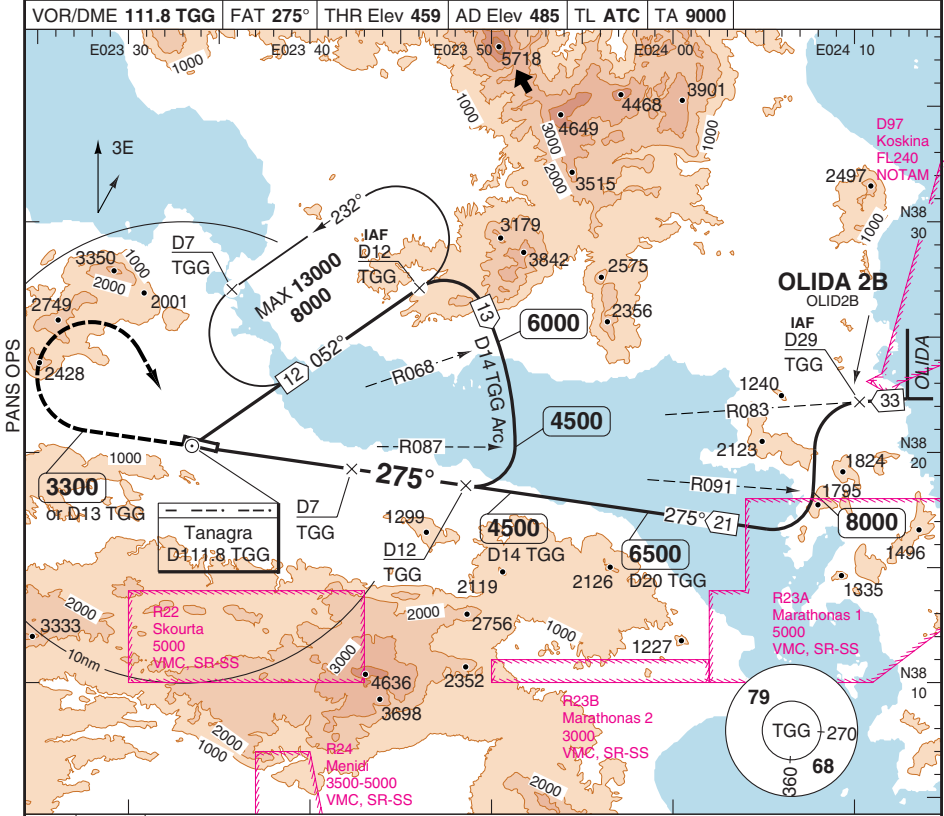
Greece - LGTG

Change: New
THIS CHART IS A PART OF NAVIGRAPH NDAC AND IS INTENDED FOR FLIGHT SIMULATION USE ONLY

Reverse side blank

VOR RWY 28

Tanagra APP/TWR 120.25 122.1	VOR/DME 111.8 TGG	FAT 275°	THR Elev 459	AD Elev 485	TL ATC	TA 9000
--	--------------------------	-----------------	---------------------	--------------------	---------------	----------------



ACFT	VOR+DME	Circling
A	1300 (841)	1740 (1254) 1.5km
B	1500m	1940 (1454) 1.6km
C	1300 (841)	2040 (1554) 2.4km
D	2400m	2500 (2014) 3.6km

GS	80	100	120	140	160
ROD 3.0°	430	540	650	750	860

DME	3.0°	LDA 2990x45
TGG	ALT	9809x147ft
10.4	3500	P 2.5°
9	3050	
8	2730	
7	2410	
6	2090	
5	1760	
4	1440	
3.6	1300	

© Navtech - lgtg01iaip00

NALS
Reverse side blank

JAR-OPS Landing Minima

TANAGRA

The following Minima is for Public Transport aircraft and conforms to JAR-OPS1 regulations.

STRAIGHT-IN APPROACH		C				D			
R/W	Procedure	DA/ MDA QNH ft	DH/ MDH QFE ft	RVR m	RVR No ALS m	DA/ MDA QNH ft	DH/ MDH QFE ft	RVR m	RVR No ALS m
28	VOR/DME	1300	850	1400	2000	1300	850	1800	2000

Notes:

CIRCLING		C			D		
R/W	Procedure	MDA QNH ft	MDH QFE ft	Vis m	MDA QNH ft	MDH QFE ft	Vis m
28	VOR/DME	2040	1560	2400	2500	2020	3600

Notes:

TAKE-OFF		C		D	
Runway	Facilities	RVR	Vis	RVR	Vis
10/28 (1)	REDL and/or RCL	400	-	400	-
10/28	Nil (Day only)	500	-	500	-

Notes:

(1) HJ only.

JAR-OPS Landing Minima

TANAGRA

The following Minima is for Public Transport aircraft and conforms to JAR-OPS1 regulations.

STRAIGHT-IN APPROACH		A				B			
R/W	Procedure	DA/ MDA QNH ft	DH/ MDH QFE ft	RVR m	RVR No ALS m	DA/ MDA QNH ft	DH/ MDH QFE ft	RVR m	RVR No ALS m
28	VOR/DME	1300	850	1200	1500	1300	850	1400	1500

Notes:

CIRCLING		A			B		
R/W	Procedure	MDA QNH ft	MDH QFE ft	Vis m	MDA QNH ft	MDH QFE ft	Vis m
28	VOR/DME	1740	1260	1500	1940	1460	1600

Notes:

TAKE-OFF		A		B	
Runway	Facilities	RVR	Vis	RVR	Vis
10/28 (1)	REDL and/or RCL	400	-	400	-
10/28	Nil (Day only)	500	-	500	-

Notes:

(1) HJ only.