

LGRD

Airport information:

Country: Greece

City: RODOS

Coordinates: N 36° 23.1', E028 07.1

Elevation: 204

Customs: Customs: PN 1 HR.

Fuel:

RFF: Not avbl

hours: HJ

Runways:

Runway 08

Takeoff length: 2400, Landing length: 2400

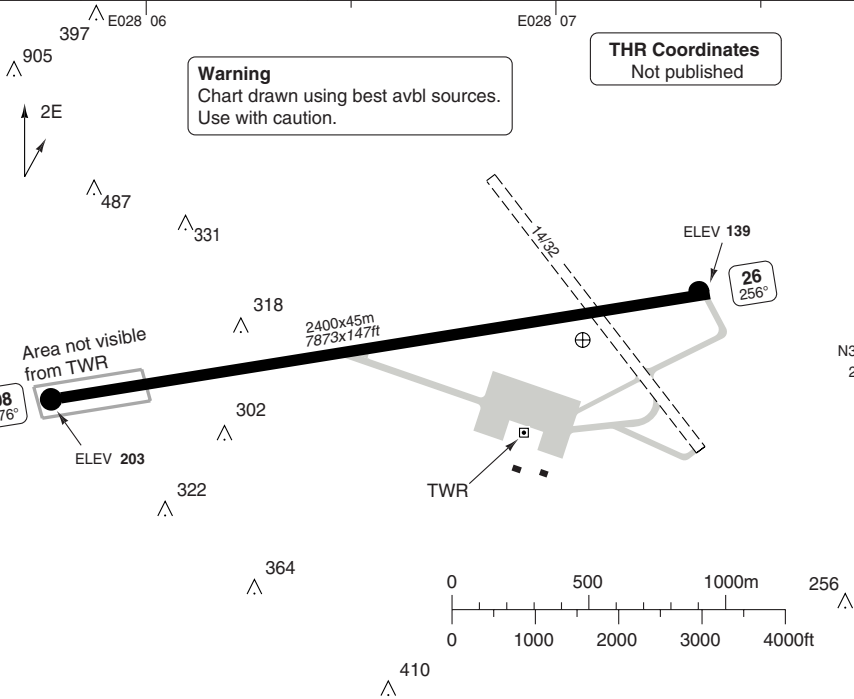
Runway 26

Takeoff length: 2400, Landing length: 2400

AERODROME

Diagoras TWR 118.2 122.1	Maritsa AFIS 118.1
--	------------------------------

AD Elev **204** | ARP: N36 23.1 E028 07.1 | RFF: - | AD HR: HJ



RWY	Slope	TORA m/ft	LDA m/ft	ALS	REDL	Additional
08	-0.8	2400 / 7873	2400 / 7873	-	-	-
26	+0.8	2400 / 7873	2400 / 7873	-	-	-

EU OPS		TAKE OFF MINIMA	
RWY	Facilities	RVR A B C D	
08/26	RCL (day only) or RCL + REDL	400m	
	NIL (day only)	500m	

GENERAL INFORMATION

- WARNING**
 - Raising terrain on final APCH.
 - Due to proximity of high terrain following sectors are not visible from TWR.
 - 262° - 274° below 400.
 - 290° - 325° below 2000.
 - 040° - 062° below 2000.
- CIRCUITS**
 - Circuit ALT: JET ACFT: **1500**
PROP ACFT: **1200**
 - RWY 08 right hand circuit.
- TRAFFIC NOTES**
VFR ACFT departing from or approaching to LGRD are not permitted to overfly Rodos town.
- TWY RESTRICTION**
TWY from Apron to RWY 14/32 width 10.5m/34ft.

© Navitech - lgrd01laorg0

Reverse side blank

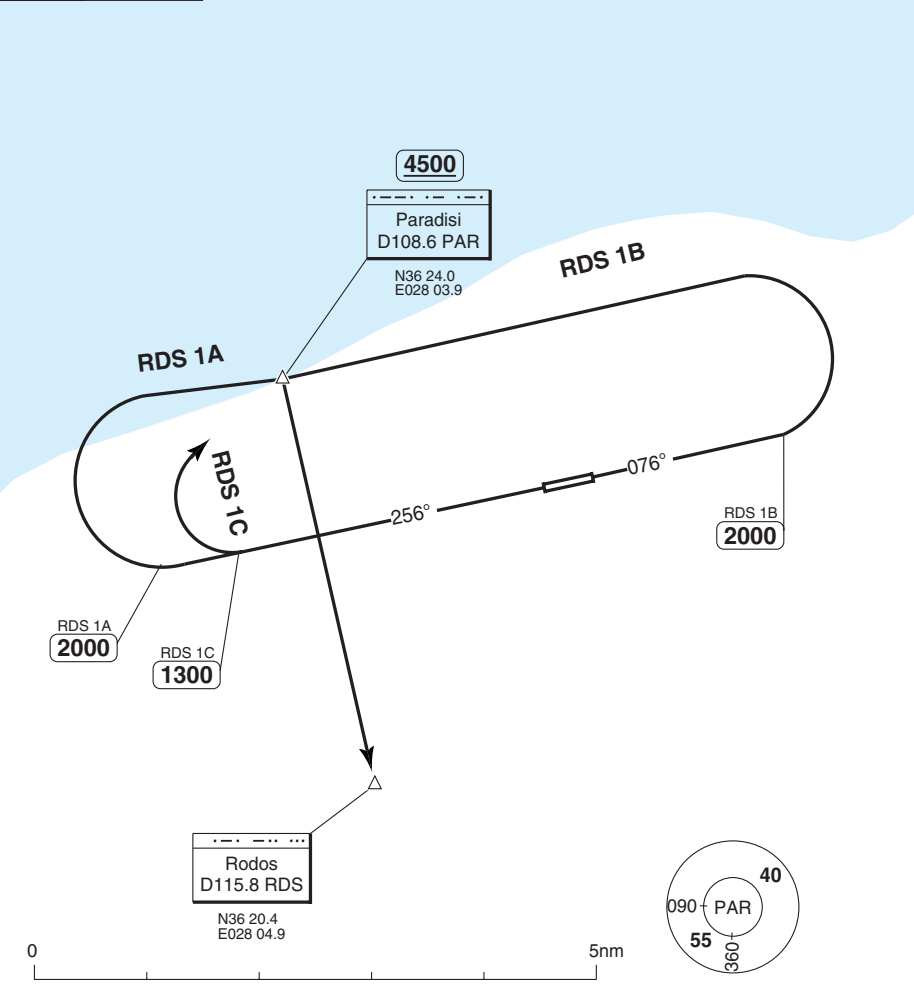
Change: New spec.

THIS CHART IS A PART OF NAVIGRAPH NDAC AND IS INTENDED FOR FLIGHT SIMULATION USE ONLY

SID

Diagoras TWR 118.2 122.1	Maritsa AFIS 118.1	Rodos APP 127.25 122.1 118.25
---------------------------------------	------------------------------	--

TA **6000** | AD Elev **204**



NOTE: RWY 08: Climb visually upto 1000ft ALT and 3200m visibility required due to OBST located at 094°/1.6nm from DER.
RWY 26: Climb visually upto 700ft ALT and 2400m visibility required due to OBST located at 236°/1.2nm from DER.

MNM CLIMB GRADIENT: (Except RDS 1C) 4.6% to 5500.

SID	Routeing	Altitudes
RDS 1A	Climb on 256° to 2000 - turn right - PAR - turn right - RDS.	PAR MNM 4500
RDS 1B	Climb on 076° to 2000 - turn left - PAR - turn left - RDS.	PAR MNM 4500
RDS 1C	Climb on 256° to 1300 - turn right climbing to MNM 2000 - follow Rodos APP (RADAR required).	

© Navitech - lgrd01daorg0

30 - 1

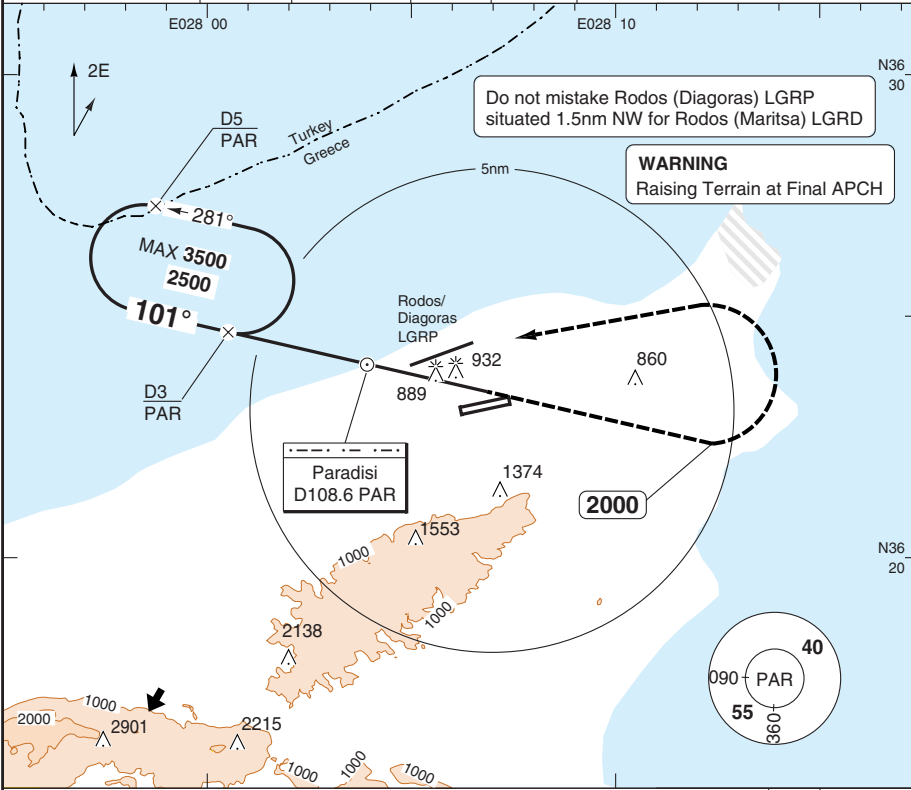
Reverse side blank

Change: New spec.

VOR CIRCLING CAT A

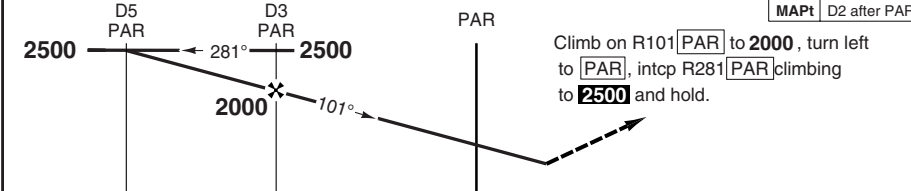
Rodos APP 127.25 122.1 118.25	Diagoras TWR 118.25 122.1	Maritsa AFIS 118.1
-------------------------------------	---------------------------------	-----------------------

VOR/DME 108.6 PAR	FAT 101°	AD Elev 204	TL ATC	TA 6000
-------------------	----------	-------------	--------	---------



PANS OPS

50 - 1



nm	13	12	11	10	9	8	7	6	5	4	3	2	1	0
----	----	----	----	----	---	---	---	---	---	---	---	---	---	---

ACFT	VOR+DME Circling
A	1440 (1238) 1.5km
B	
C	NA
D	

© Navtech - Igrd01iaip00
EU OPS

Reverse side blank

Change: New Spec.

THIS CHART IS A PART OF NAVIGRAPH NDAC AND IS INTENDED FOR FLIGHT SIMULATION USE ONLY