

Airport information:

Country: France

City: STRASBOURG

Coordinates: N 48° 32.5', E007 38.1

Elevation: 505

Customs: Customs: 0500-2200, other times O/R.

Fuel: 100LL, Jet A1

RFF: CAT 8. Rescue equipment: 01/11 to 31/03 0400-2130 CAT7, 2130-0400 CAT 5. From 0400-2130 hours: H24

Runways:

Runway 05

Takeoff length: 2400, Landing length: 2400

Runway 23

Takeoff length: 2400, Landing length: 2400

Strasbourg GND
121.8

TWR
119.25

ATIS
126.925

AD Elev 505 | ARP: N48 32.5 E007 38.1 | RFF: CAT 8 | AD HR: H24

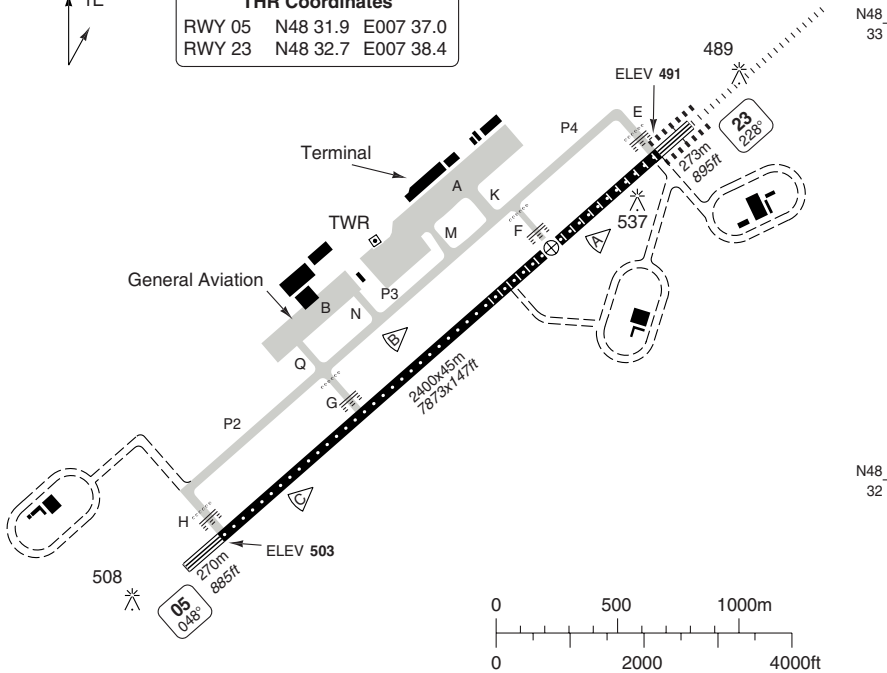
E007 37

E007 38

E007 39



THR Coordinates
RWY 05 N48 31.9 E007 37.0
RWY 23 N48 32.7 E007 38.4



RWY	Slope	TORA m/ft	LDA m/ft	ALS	REDL	RCLL	Additional
05	- 0.2	2400 / 7873	2400 / 7873	-	H ①	15m	P 3.5° (52), REIL
23	+0.2	2400 / 7873	2400 / 7873	H-B	H ①	15m	P 3° (58), REIL

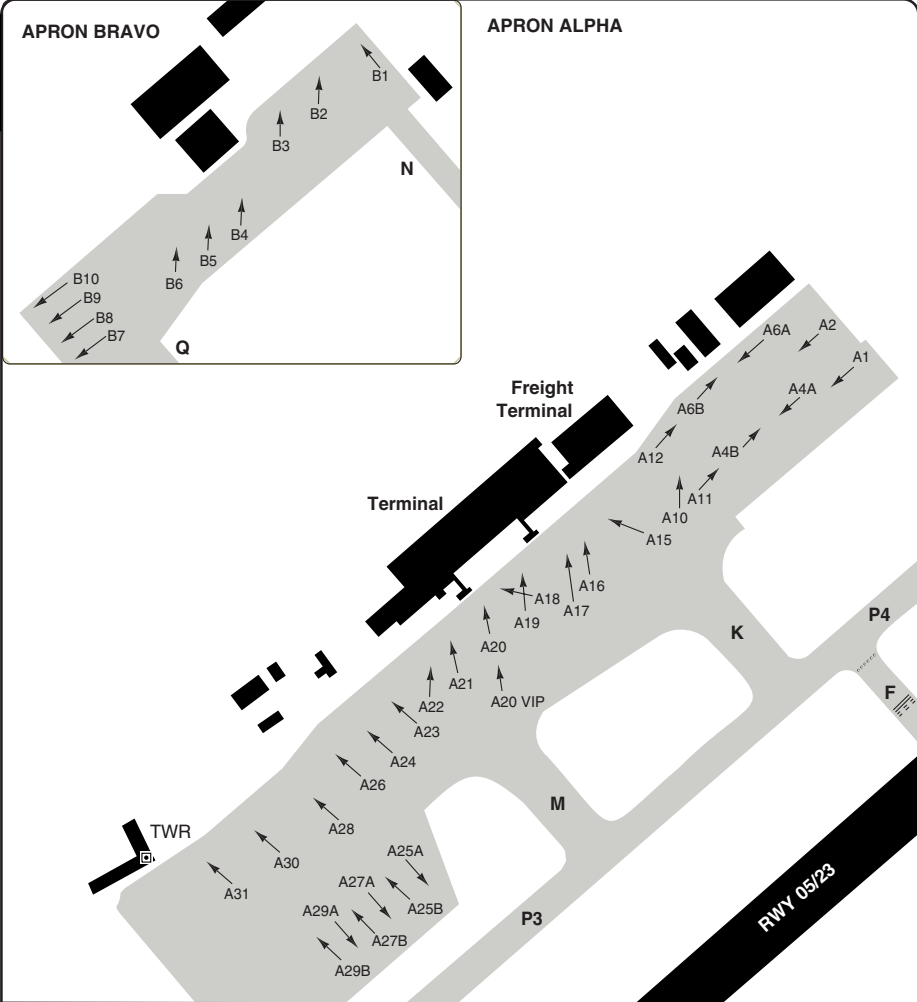
① White.

STATE

TAKE OFF MINIMA

RWY	Facilities	RVR			
		A B C	D		
23	HRCLL + HREDL + Multiple RVR + HUD	Ap.O	LVTO	75m	75m
	HRCLL + HREDL + Multiple RVR	Ap.O	LVTO	125m	150m
05/23	RCLL + REDL + Multiple RVR			150m	200m

10 - 2



GENERAL INFORMATION

1. NIGHT FLIGHT RESTRICTION

- 1.1. Noise certificated ACFT (ICAO Annex 16, Chapter 2)
No TKOF/LDG: 21 - 04.
- 1.2. Noise certificated ACFT (ICAO Annex 16, Chapter 3)
No TKOF: 2130 - 0400.
No LDG: 22 - 03.
Exceptions:
 - Delayed scheduled TKOF permitted until 22.
 - Delayed scheduled LDG permitted until 2230.

2. TWY RESTRICTIONS

- TWY Q width 19m/ 62ft
- TWY Q LDG gear 9m/ 29ft
- TWY F, G and M not avbl to B777/300 and B747/400.
- Taxi with Caution if Aircraft on Stands A21 - A31

3. USE OF APU

- MAX 60min before departure
- MAX 20min after arrival

4. SPEED

- MAX 250kt within controlled airspace.

© Navitech - lfst02laorg0

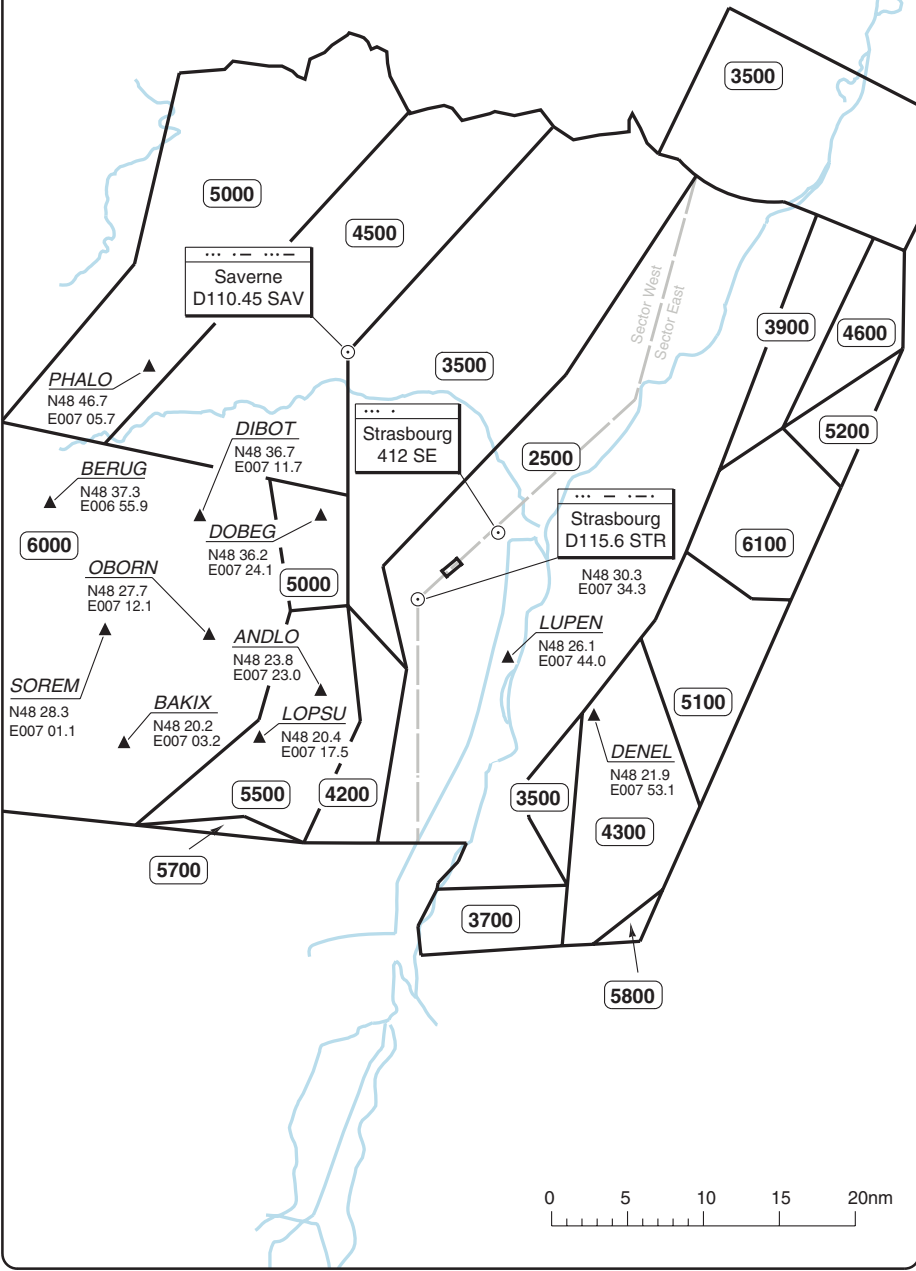
Change: Notes, Twy N.

THIS CHART IS A PART OF NAVIGRAPH NDAC AND IS INTENDED FOR FLIGHT SIMULATION USE ONLY

RADAR Minimum Altitudes

Entzheim STRASBOURG

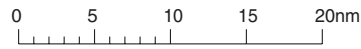
Strasbourg APP		TWR	GND	ATIS
120.7 West	119.45 East	119.25	121.8	126.925
119.575				
TL ATC	AD Elev 505			



20 - 1

© Navitech - ifst01vaorg0

Reverse side blank



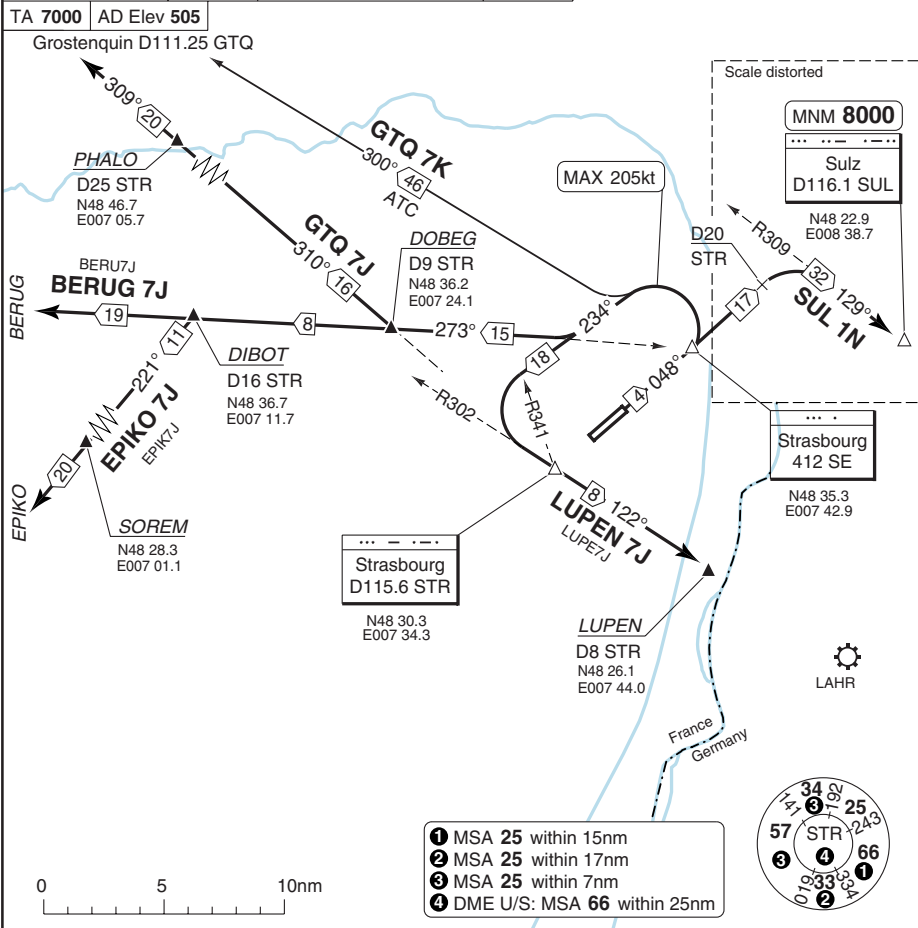
Change: New print.

THIS CHART IS A PART OF NAVIGRAPH NDAC AND IS INTENDED FOR FLIGHT SIMULATION USE ONLY

SID RWY 05

Entzheim STRASBOURG

Strasbourg GND 121.8	TWR 119.25	APP 120.7 West 119.575 East 133.1	ATIS 126.925
-------------------------	---------------	---	-----------------



SPEED: MAX 250kt FL 100.

SID	MNM Climb	Routeing	Altitudes
BERUG 7J	6.5% up to 7000	Climb on 048° - at SE turn left (MAX 205kt) - 234° - 273° from SE - DOBEG - DIBOT - BERUG	
EPIKO 7J	6.5% up to 7000	Climb on 048° - at SE turn left (MAX 205kt) - 234° - 273° from SE - DIBOT - 221° - EPIKO	
GTQ 7J	6.5% up to 7000	Climb on 048° - at SE turn left (MAX 205kt) - 234° - 273° from SE - DOBEG - R310 STR - PHALO - GTQ	
GTQ 7K (ATC)	7% up to 7000	Climb on 048° - at SE turn left (MAX 205kt) - 300° from SE - GTQ	
LUPEN 7J	3.8% up to 5000	Climb on 048° - at SE turn left (MAX 205kt) - 234° - At R341 STR - 122°/R302 STR - STR - LUPEN	
SUL 1N	7.3% to 8000	Climb on 048° - at D20 STR turn right - 129°/R309 SUL - SUL	SUL MNM 8000

© Navtech - lfst01daorg0

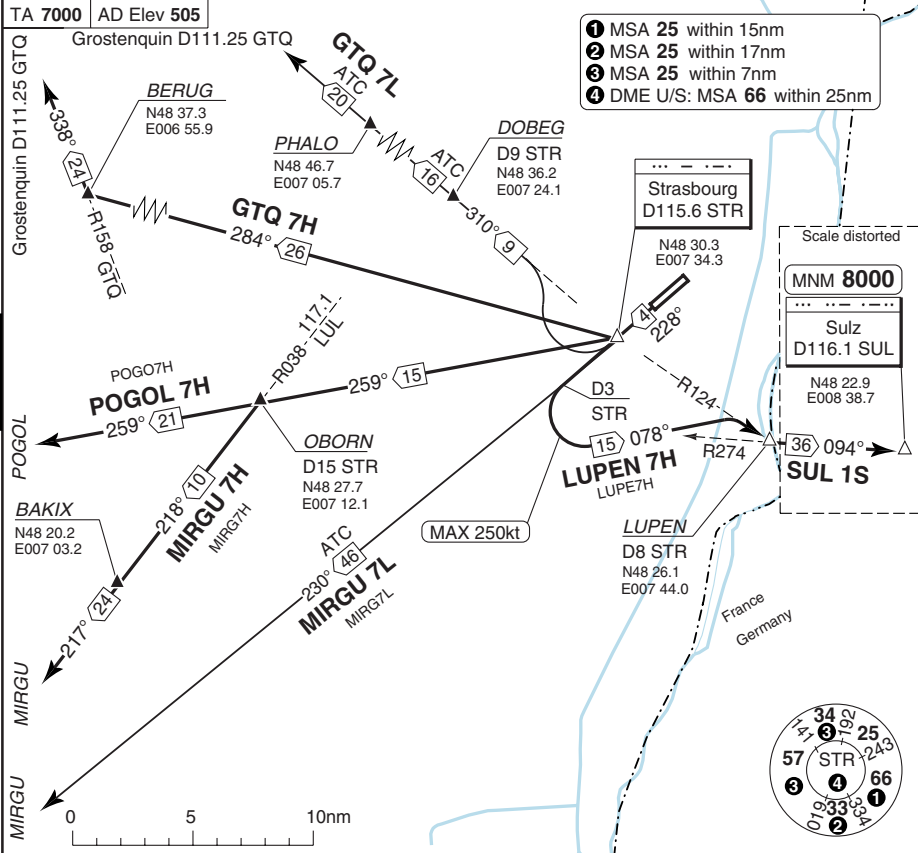
Change: Tracks.

THIS CHART IS A PART OF NAVIGRAPH NDAC AND IS INTENDED FOR FLIGHT SIMULATION USE ONLY

SID RWY 23

Entzheim STRASBOURG

Strasbourg GND 121.8	TWR 119.25	APP 120.7 West 119.575 East 133.1	ATIS 126.925
-------------------------	---------------	--	-----------------



SPEED: MAX 250kt FL 100.

SID	MNM Climb	Routing	Altitudes
GTQ 7H	8.9% up to 7000	Climb on 228° - STR - turn right - R284 STR - BERUG - 338°/R158 GTQ - GTQ	
GTQ 7L (ATC)	8.9% up to 7000	Climb on 228° - STR - turn right - R310 STR - DOBEG - PHALO - GTQ	
LUPEN 7H	8.5% up to 5000	Climb on 228° - at D3 STR turn left (MAX 250kt) - 078° - intercept R124 STR - LUPEN	
MIRGU 7H	8.9% up to 7000	Climb on 228° - STR - turn right - R259 STR - OBORN - 218°/R038 LUL - BAKIX - 217° - MIRGU	
MIRGU 7L (ATC)	4.3%	Climb on 228° - STR - R230 STR - MIRGU	
POGOL 7H	8.9% up to 7000	Climb on 228° - STR - turn right - R259 STR - OBORN - POGOL	
SUL 1S	9.1% up to 8000	Climb on 228° - STR - R230 STR - at D3 STR turn left (MAX 250kt) - 078° - R124 STR - LUPEN - 094°/R274 SUL - SUL	SUL MNM 8000

© Navitech - ifst02daorg0

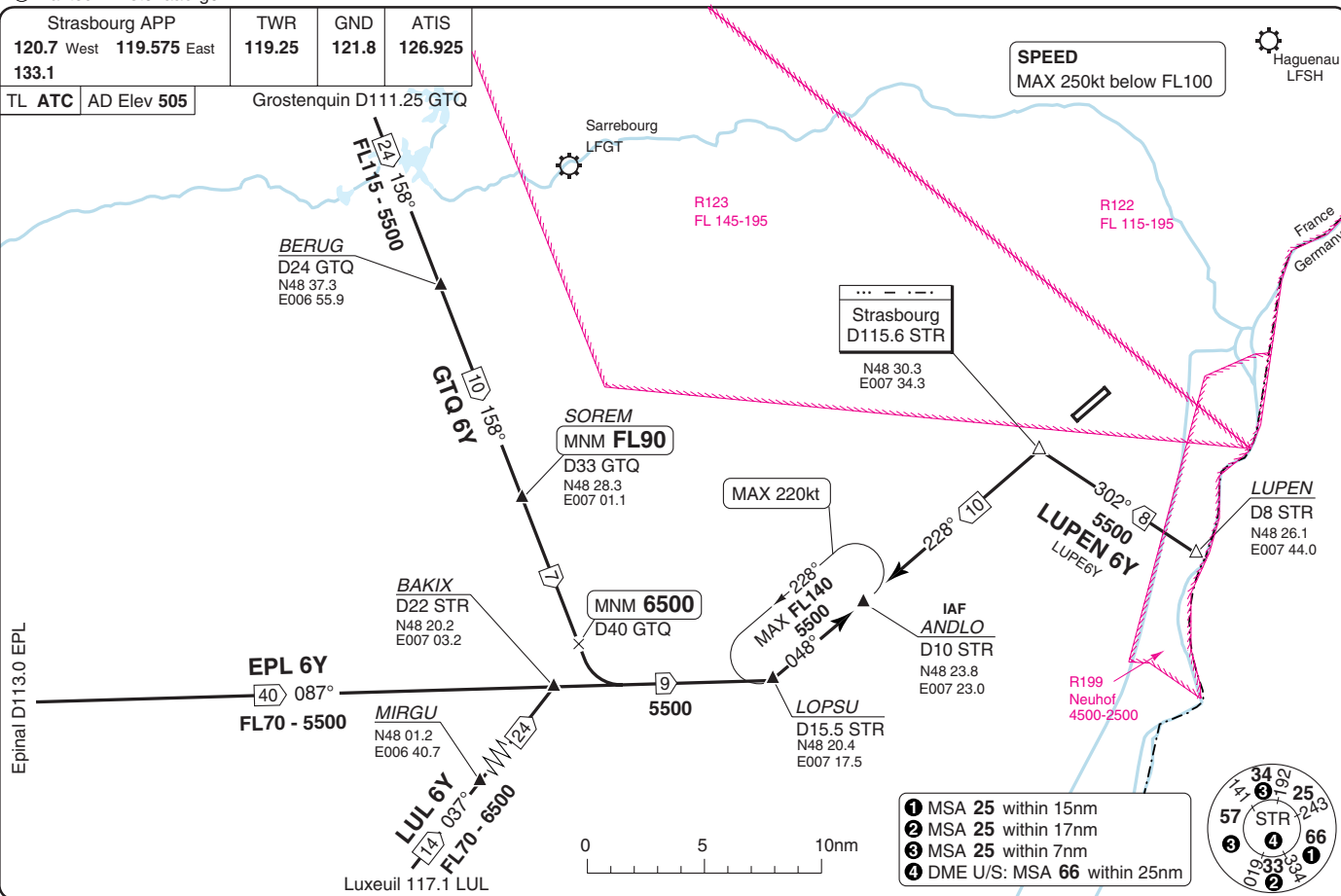
Change: Tracks.

THIS CHART IS A PART OF NAVIGRAPH NDAC AND IS INTENDED FOR FLIGHT SIMULATION USE ONLY

Strasbourg APP		
120.7 West	119.575 East	
TWR	GND	ATIS
119.25	121.8	126.925
133.1		

TL ATC AD Elev 505

Grostenquin D111.25 GTQ



STAR RWY 05

W/E 21 OCT 10

40 - 1 22 SEP 10

Entzheim STRASBOURG

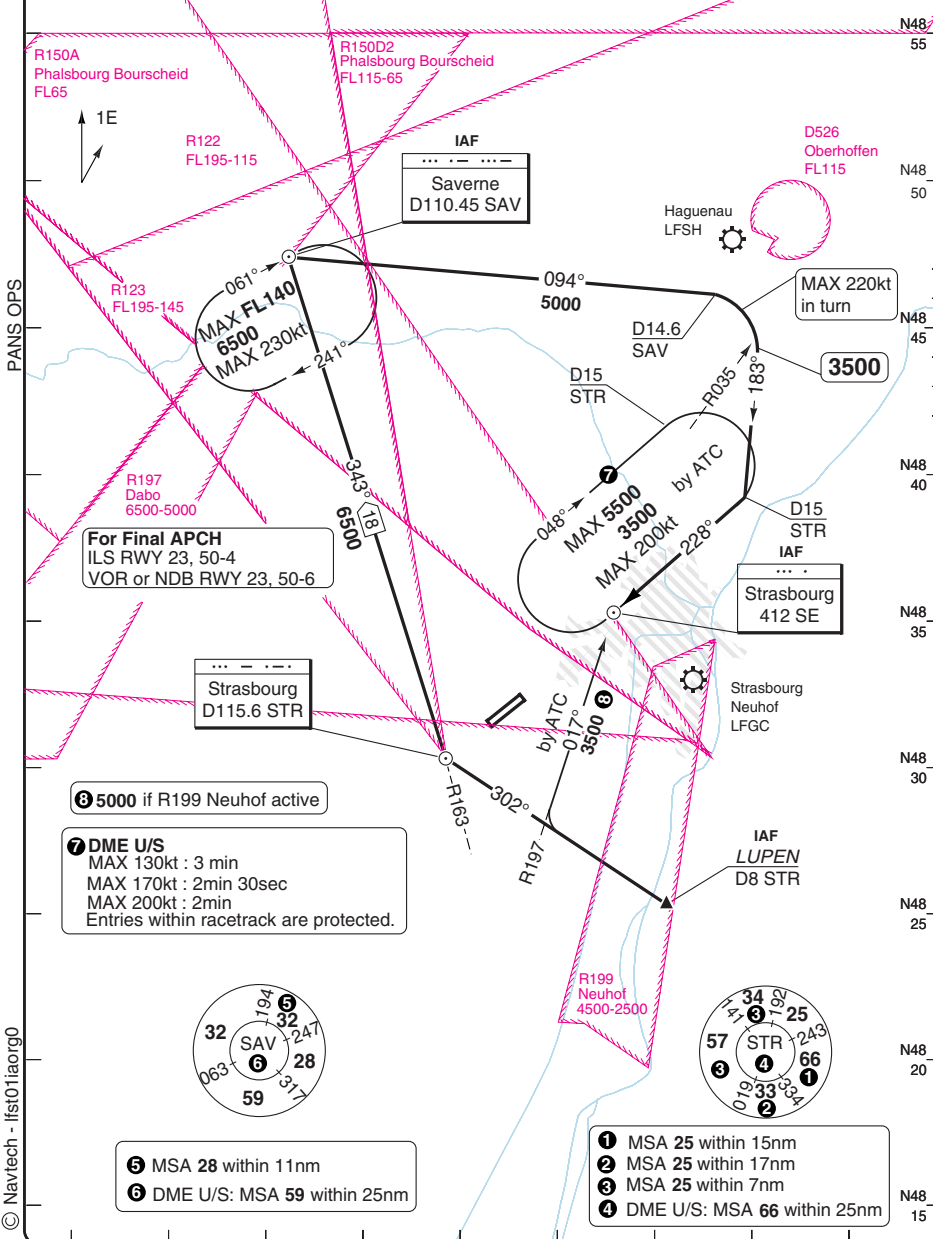
France - LFST / SXB

THIS CHART IS A PART OF NAVIGRAPH NDAC AND IS INTENDED FOR FLIGHT SIMULATION USE ONLY

Change: Tracks

INITIAL APCH RWY 23 ILS, VOR or NDB Entzheim STRASBOURG

Strasbourg APP 120.7 West 119.575 East 133.1	TWR 119.25	GND 121.8	ATIS 126.925	
THR Elev 491	AD ELEV 505	TL ATC	TA 7000	



© Navtech - lfst01iaorg0

50 - 1

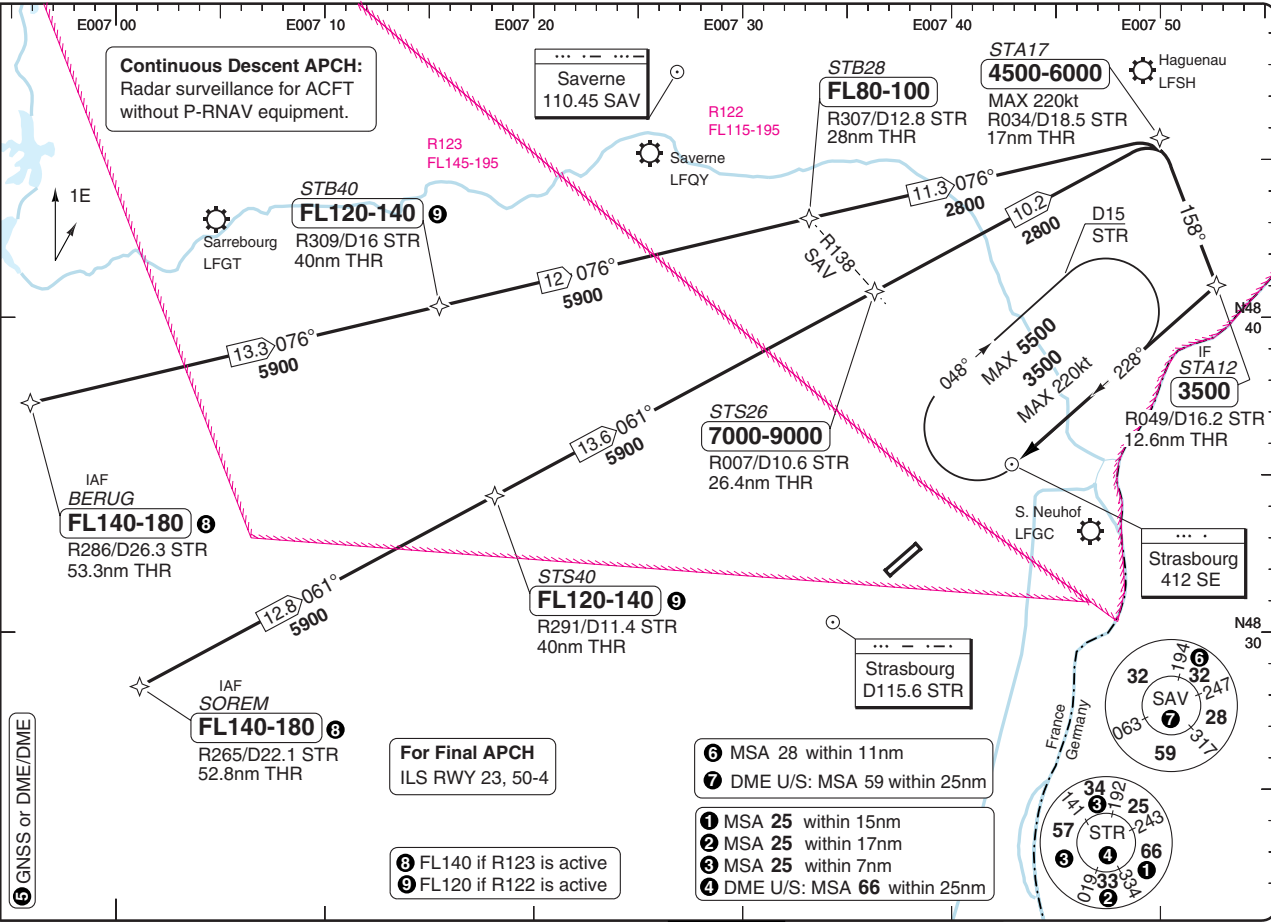
Change: New chart.

THIS CHART IS A PART OF NAVIGRAPH NDAC AND IS INTENDED FOR FLIGHT SIMULATION USE ONLY

INITIAL APCH RWY 23 CDA RNAV ILS 6 Entzheim STRASBOURG

Strasbourg APP	ATIS
120.7 West	126.925
119.575 East	121.8
133.1	TWR
	119.25
AD Elev 505	TA 7000
TL ATC	

6 GNSS or DME/DME

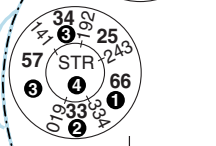


Continuous Descent APCH:
Radar surveillance for ACFT without P-RNAV equipment.

For Final APCH
ILS RWY 23, 50-4

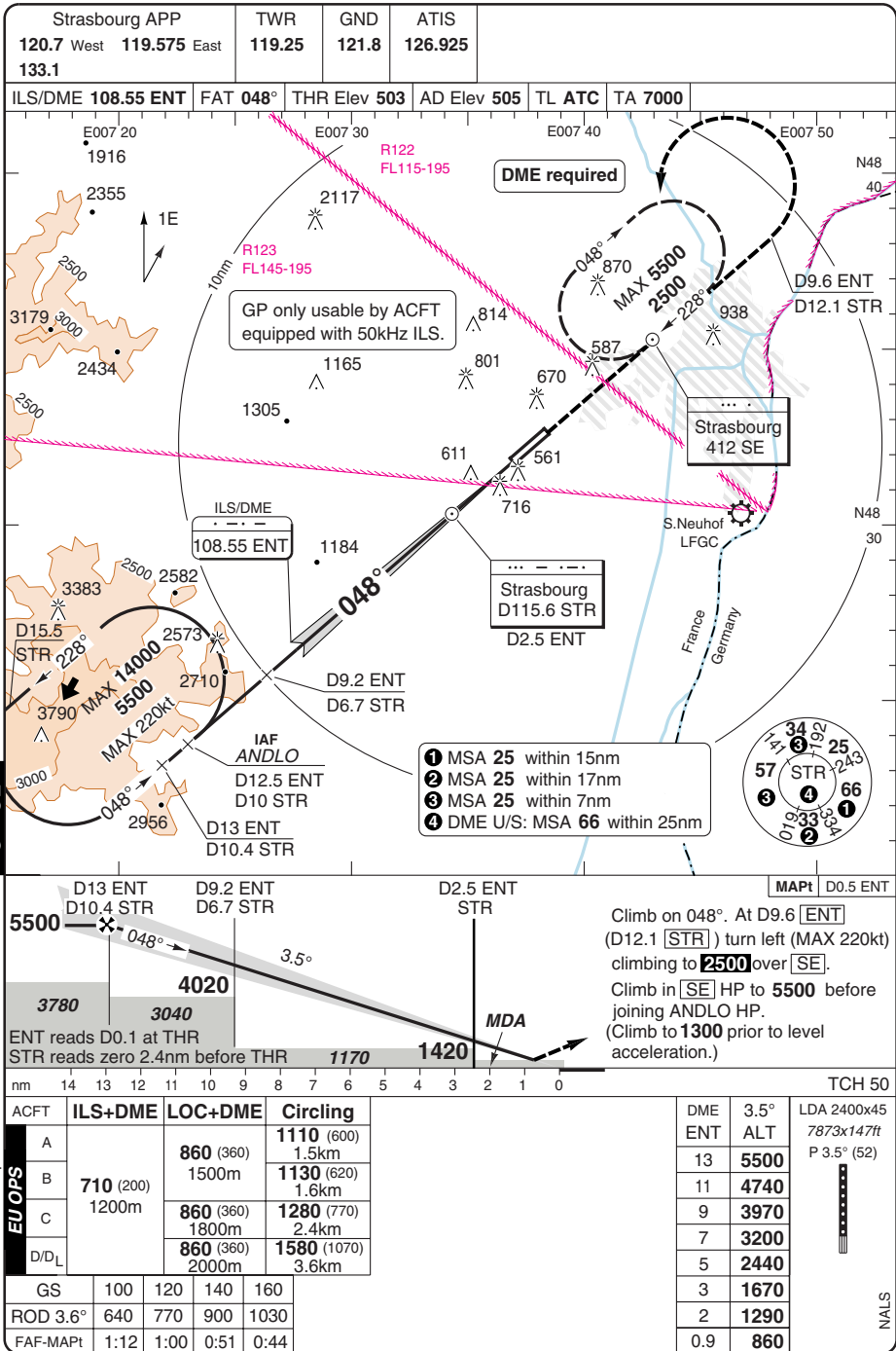
- 6 FL140 if R123 is active
- 9 FL120 if R122 is active

- 6 MSA 28 within 11nm
- 7 DME U/S: MSA 59 within 25nm
- 1 MSA 25 within 15nm
- 2 MSA 25 within 17nm
- 3 MSA 25 within 7nm
- 4 DME U/S: MSA 66 within 25nm



ILS RWY 05

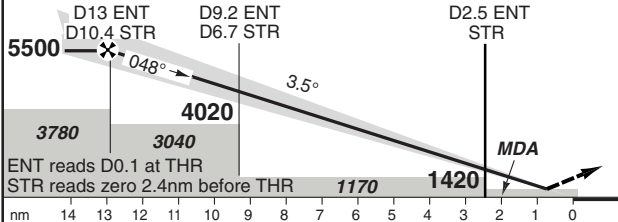
Entzheim STRASBOURG



Strasbourg APP	TWR	GND	ATIS
120.7 West 119.575 East	119.25	121.8	126.925
133.1			

ILS/DME 108.55 ENT	FAT 048°	THR Elev 503	AD Elev 505	TL ATC	TA 7000
--------------------	----------	--------------	-------------	--------	---------

- ① MSA 25 within 15nm
- ② MSA 25 within 17nm
- ③ MSA 25 within 7nm
- ④ DME U/S: MSA 66 within 25nm



Climb on 048°. At D9.6 [ENT] (D12.1 [STR]) turn left (MAX 220kt) climbing to 2500 over [SE].
 Climb in [SE] HP to 5500 before joining ANDLO HP.
 (Climb to 1300 prior to level acceleration.)

ACFT	ILS+DME	LOC+DME	Circling
A	710 (200) 1200m	860 (360) 1500m	1110 (600) 1.5km
B		860 (360) 1800m	1130 (620) 1.6km
C		860 (360) 2000m	1280 (770) 2.4km
D/DL		860 (360) 2000m	1580 (1070) 3.6km

DME ENT	3.5° ALT	LDA 2400x45 7873x147ft P 3.5° (52)
13	5500	
11	4740	
9	3970	
7	3200	
5	2440	
3	1670	
2	1290	
0.9	860	

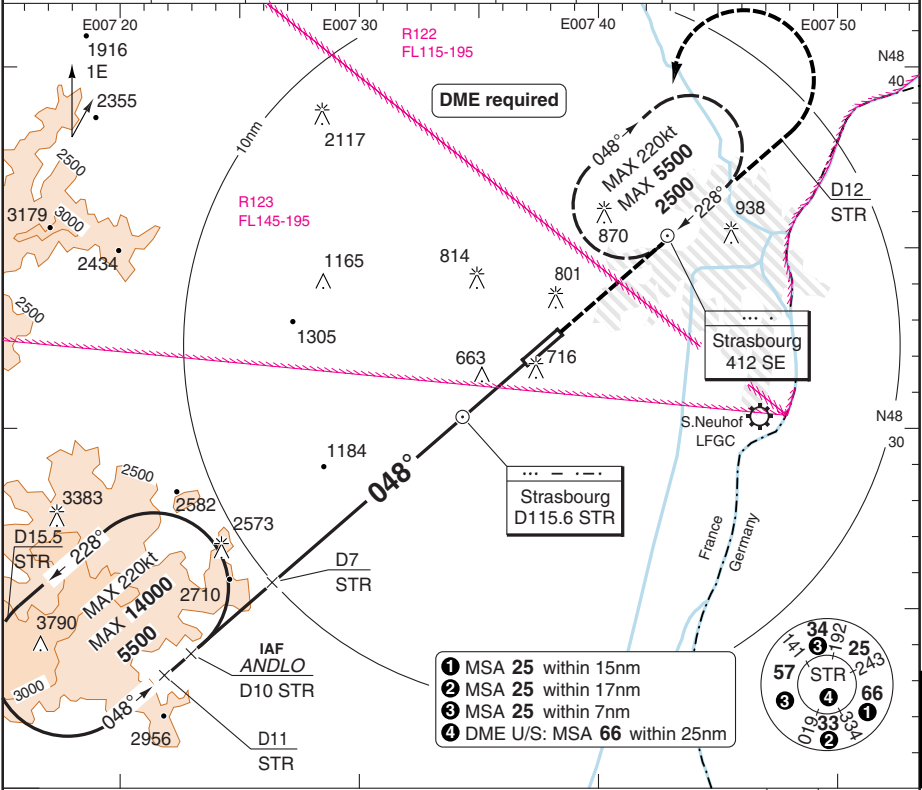
GS	100	120	140	160
ROD 3.6°	640	770	900	1030
FAF-MAPt	1:12	1:00	0:51	0:44

Change: Obstacles, Notes.

VOR RWY 05

Entzheim STRASBOURG

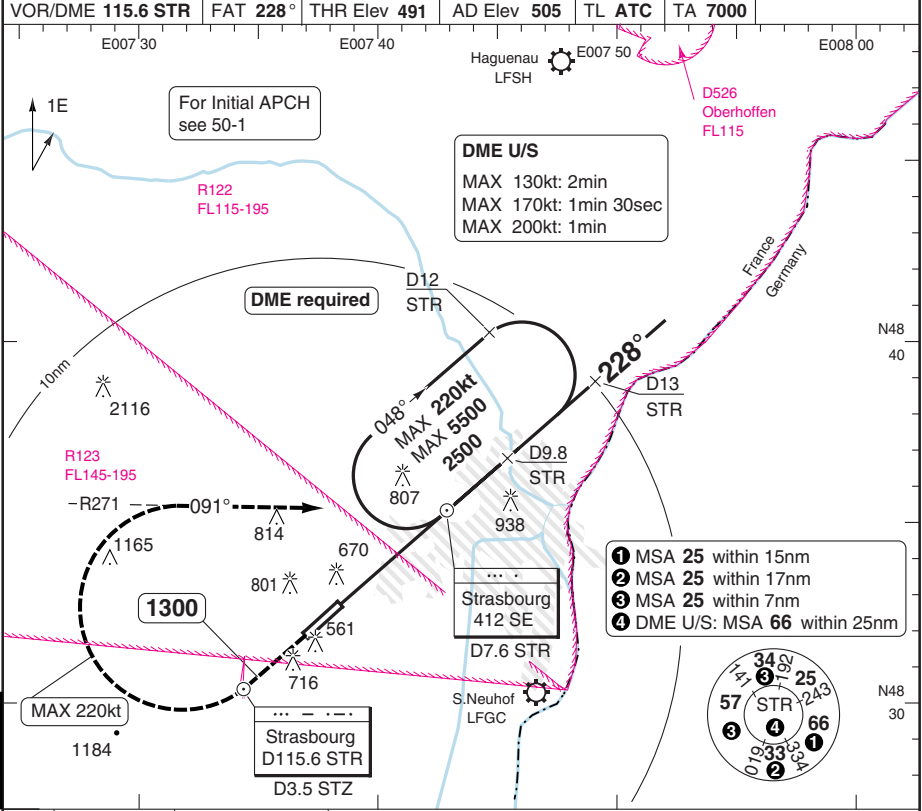
Strasbourg APP		TWR	GND	ATIS
120.7 West	119.575 East	119.25	121.8	126.925
133.1				
VOR 115.6 STR	FAT 048°	THR Elev 503	AD Elev 505	TL ATC TA 7000



VOR OR NDB RWY 23 FINAL APCH

Entzheim STRASBOURG

Strasbourg APP 120.7 West 119.575 East 133.1	TWR 119.25	GND 121.8	ATIS 126.925
VOR/DME 115.6 STR	FAT 228°	THR Elev 491	AD Elev 505
TL ATC		TA 7000	



MAPt	VOR: D4.2 STR	NDB: 3.4nm after SE	D7.6 STR SE	D9.8 STR	D13 STR	D15 STR
------	---------------	---------------------	-------------	----------	---------	---------

Climb on 228°. At [STR]
 or 1300 turn right (MAX 220kt)
 intercept 091°/R271 [SE].
 Climb to 2500 to SE and hold.
 (Climb to 2400 prior to
 level acceleration.)
 If turn at MAPt, ATC slope 3.3°

ACFT	VOR+DME	NDB+DME	Circling
A	930 (420)	930 (420)	1110 (600) 1.5km
B	1200m	1200m	1120 (610) 1.6km
C	930 (420)	930 (420)	1280 (770) 2.4km
D	1400m	1400m	1580 (1070) 3.6km

DME STR	3.0° ALT	LDA 2400x45 7873x147ft P 3° (58)
12.9	3500	
11	2900	
10	2580	
9	2250	
8	1930	
7	1610	
6	1290	
4.9	930	

GS	100	120	140	160
ROD 3.0°	540	650	760	870
OM-MAPt	2:02	1:42	1:27	1:16

Change: Obstacles, Note, Procedure.

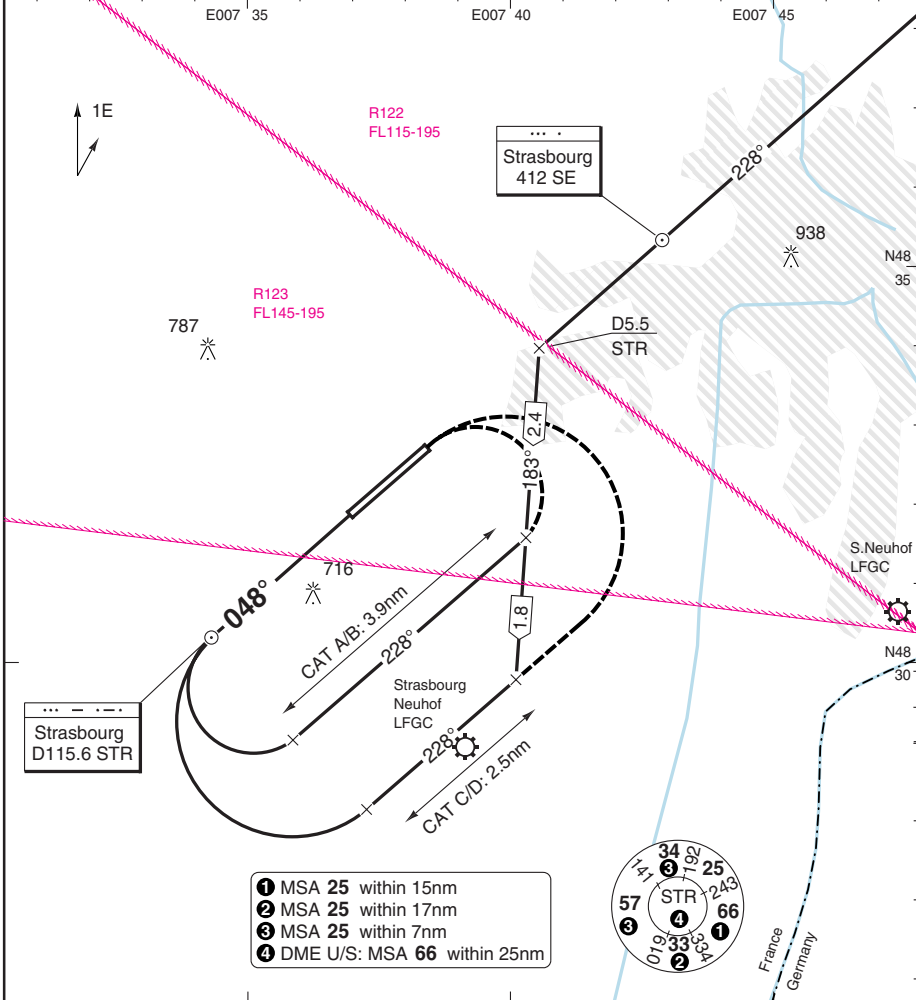
© Navtech - lfst06iap00 EU OPS

CIRCLING RWY 05

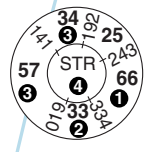
Entzheim STRASBOURG

Strasbourg APP		TWR	GND	ATIS
120.7 West	119.575 East	119.25	121.8	126.925
133.1				

FAT 048°	THR Elev 503	AD Elev 505	TL ATC	TA 7000
----------	--------------	-------------	--------	---------



- 1 MSA 25 within 15nm
- 2 MSA 25 within 17nm
- 3 MSA 25 within 7nm
- 4 DME U/S: MSA 66 within 25nm



ACFT	Circling
A	1150 (640) 1.5km
B	1150 (640) 1.6km
C	1150 (640) 2.4km
D	1210 (700) 3.6km

LDA 2400x45
7873x147ft
P 3.5° (52)



PANS OPS

50 - 7

© Navtech - lfst07iaip00

Change: Minima, obstacles.

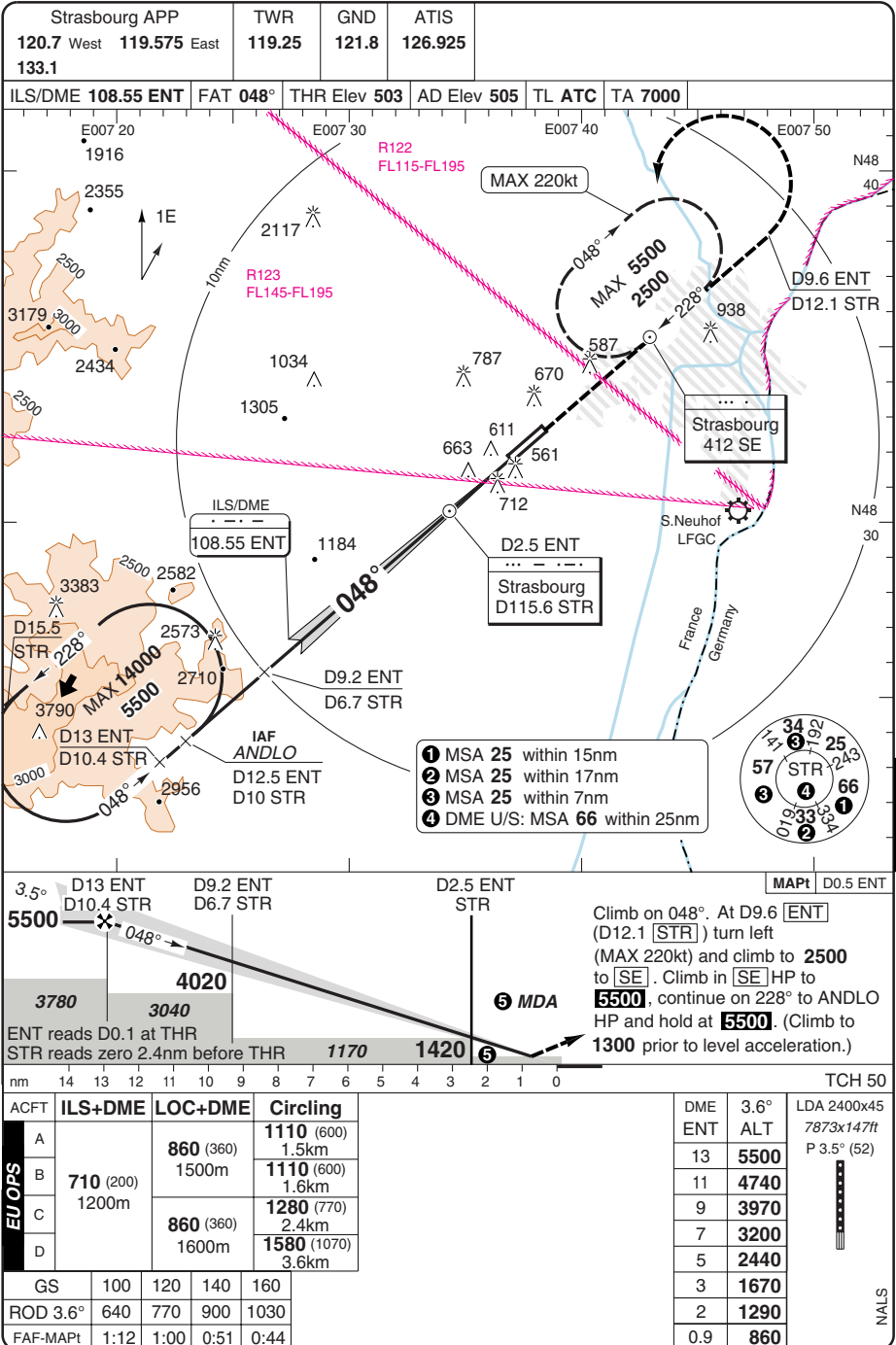
THIS CHART IS A PART OF NAVIGRAPH NDAC AND IS INTENDED FOR FLIGHT SIMULATION USE ONLY

NALS

Reverse side blank

ILS RWY 05

Entzheim STRASBOURG



50 - 1

© Navtech - lfst01iaip00

ACFT	ILS+DME	LOC+DME	Circling	
A	710 (200) 1200m	860 (360) 1500m	1110 (600) 1.5km	
B			1110 (600) 1.6km	
C		860 (360) 1600m	1280 (770) 2.4km	
D	1580 (1070) 3.6km			
GS	100	120	140	160
ROD 3.6°	640	770	900	1030
FAF-MAPt	1:12	1:00	0:51	0:44

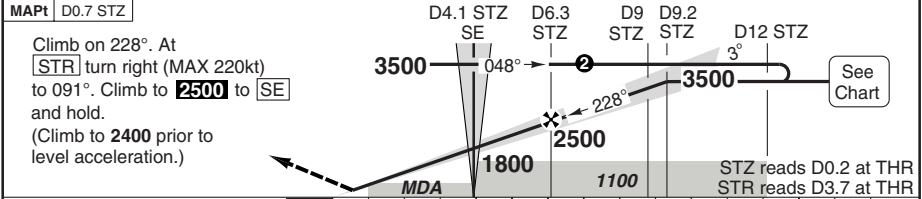
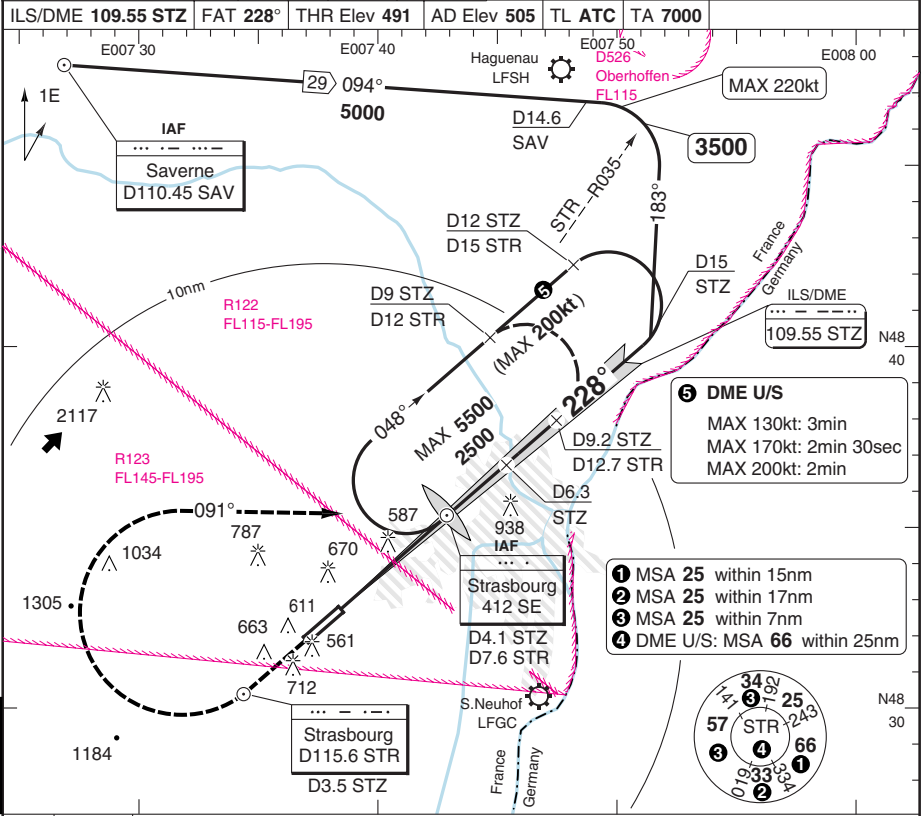
DME ENT	3.6° ALT	LDA 2400x45 7873x147ft P 3.5° (52)
13	5500	
11	4740	
9	3970	
7	3200	
5	2440	
3	1670	
2	1290	
0.9	860	

NALS

ILS RWY 23

Entzheim STRASBOURG

Strasbourg APP 120.7 West 119.575 East 133.1	TWR 119.25	GND 121.8	ATIS 126.925
ILS/DME 109.55 STZ FAT 228° THR Elev 491 AD Elev 505 TL ATC E007 50 TA 7000			



TCH 54		0 1 2 3 4 5 6 7 8 9 10 11 12 13 14 15 nm														
ACFT	CAT IIIB	ACFT	CAT II	ILS	LOC+DME	Circling	DME	3.1° ALT	LDA 2400x45							
ALL	Available	A	RA 98 300m	700 (200) 550m	830 (340) 800m	1130 (620) 1.5km	9.2	3500	7873x147ft P 3° (58)							
		B				1130 (620) 1.6km	7	2780								
		C				1290 (780) 2.4km	6	2450								
		D	1590 (1080) 3.6km			5	2120									
GS	100 120 140 160						4	1790								
ROD 3.1°	550 660 770 880						3	1470								
OM-MAPt	2:02 1:42 1:27 1:16						2	1140								
							1.1	830								

© Navtech - lfst02lap00

FALS

JAR-OPS Landing Minima

Entzheim STRASBOURG

The following Minima is for Public Transport aircraft and conforms to JAR-OPS1 regulations.

STRAIGHT-IN APPROACH		C				D			
R/W	Procedure	DA/ MDA QNH ft	DH/ MDH QFE ft	RVR m	RVR No ALS m	DA/ MDA QNH ft	DH/ MDH QFE ft	RVR m	RVR No ALS m
05	ILS/DME (2)	710	200	1000	N/A	710	200	1000	N/A
05	LOC/DME (2)	870	360	1800	N/A	870	360	2000	N/A
05	VOR/DME (1)	960	460	2000	N/A	960	460	2000	N/A
23	ILS/DME (2)	700	200	550	1000	700	200	550	1000
23	LOC/DME (2)	840	340	1000	1800	840	340	1400	2000
23	ILS/DME (3)	950	460	800	1000	950	460	800	1000
23	LOC/DME (3)	840	340	1000	1800	840	340	1400	2000
23	VOR/DME (1)	930	420	1000	1800	930	420	1400	2000
23	NDB/DME(1)	930	420	1000	1800	930	420	1400	2000

Notes:

- (1) Procedure based on aerodrome elevation.
- (2) Includes Cat DL.
- (3) After continuous descent approach (CDA).

CIRCLING		C			D		
R/W	Procedure	MDA QNH ft	MDH QFE ft	Vis m	MDA QNH ft	MDH QFE ft	Vis m
05	CIRC with VPT	1150	640	2400	1210	700	3600
05	VOR/DME	1280	770	2400	1580	1070	3600
05	ILS/DME, LOC/DME	1280	770	2400	1580	1070	3600
23	NDB, VOR/DME	1280	770	2400	1580	1070	3600
23	ILS/DME, LOC/DME	1290	780	2400	1590	1080	3600
23	ILS/DME, LOC/DME (1)	1290	780	2400	1590	1080	3600

Notes:

- (1) After continuous descent approach (CDA).

TAKE-OFF		C		D	
Runway	Facilities	RVR	Vis	RVR	Vis
23	RCLL(H) + REDL(H) + Multi RVR	125	-	150	-
05, 23	RCLL + REDL + Multi RVR	150	-	200	-

Notes:

JAR-OPS Landing Minima

Entzheim STRASBOURG

The following Minima is for Public Transport aircraft and conforms to JAR-OPS1 regulations.

STRAIGHT-IN APPROACH		A				B			
R/W	Procedure	DA/ MDA QNH ft	DH/ MDH QFE ft	RVR m	RVR No ALS m	DA/ MDA QNH ft	DH/ MDH QFE ft	RVR m	RVR No ALS m
05	ILS/DME (2)	710	200	1000	N/A	710	200	1000	N/A
05	LOC/DME (2)	870	360	1500	N/A	870	360	1500	N/A
05	VOR/DME (1)	960	460	1500	N/A	960	460	1500	N/A
23	ILS/DME (2)	700	200	550	1000	700	200	550	1000
23	LOC/DME (2)	840	340	900	1500	840	340	1000	1500
23	ILS/DME (3)	950	460	800	1000	950	460	800	1000
23	LOC/DME (3)	840	340	900	1500	840	340	1000	1500
23	VOR/DME (1)	930	420	900	1500	930	420	1000	1500
23	NDB/DME(1)	930	420	900	1500	930	420	1000	1500

Notes:

- (1) Procedure based on aerodrome elevation.
- (2) Includes Cat DL.
- (3) After continuous descent approach (CDA).

CIRCLING		A			B		
R/W	Procedure	MDA QNH ft	MDH QFE ft	Vis m	MDA QNH ft	MDH QFE ft	Vis m
05	CIRC with VPT	1150	640	1500	1150	640	1600
05	VOR/DME	1110	600	1500	1120	610	1600
05	ILS/DME, LOC/DME	1110	600	1500	1130	620	1600
23	NDB, VOR/DME	1110	600	1500	1120	610	1600
23	ILS/DME, LOC/DME	1130	620	1500	1140	630	1600
23	ILS/DME, LOC/DME (1)	1130	620	1500	1130	620	1600

Notes:

- (1) After continuous descent approach (CDA).

TAKE-OFF		A		B	
Runway	Facilities	RVR	Vis	RVR	Vis
23	RCLL(H) + REDL(H) + Multi RVR	125	-	125	-
05, 23	RCLL + REDL + Multi RVR	150	-	150	-

Notes:

JAR-OPS Landing Minima

Entzheim STRASBOURG

The following Minima is for Public Transport aircraft and conforms to JAR-OPS1 regulations.

CAT II**Special aircrew and aircraft certification required.**

Runways	C				D			
	DA	DH	RA	RVR	DA	DH	RA	RVR
	QNH ft	QFE ft	ft	m	QNH ft	QFE ft	ft	m
23 (1) (2)	591	100	98	300	591	100	98	350
23 (1) (3)	591	100	98	300	591	100	98	350

Notes:

- 1) Cat D RVR may be reduced to 300m when conducting autoland.
- 2) Includes Cat DL aeroplanes.
- 3) After continuous descent approach (CDA).

Runways	A				B			
	DA	DH	RA	RVR	DA	DH	RA	RVR
	QNH ft	QFE ft	ft	m	QNH ft	QFE ft	ft	m
23	591	100	98	300	591	100	98	300
23 (3)	591	100	98	300	591	100	98	300

Notes:

- 3) After continuous descent approach (CDA).