

## Airport information:

Country: France

City: LORIENT

Coordinates: N 47° 45.6', W 003° 26.4'

Elevation: 160

Customs: Customs O/R before 1400 last open day before the flight

Fuel: 100LL,Jet A1

RFF: CAT 6

hours: ATS: MON-FRI: 0600-1500 on PPR possible extension until 2200

## Runways:

Runway 02

Takeoff length: 1670, Landing length: 1670

Runway 07

Takeoff length: 2403, Landing length: 2403

Runway 20

Takeoff length: 1670, Landing length: 1670

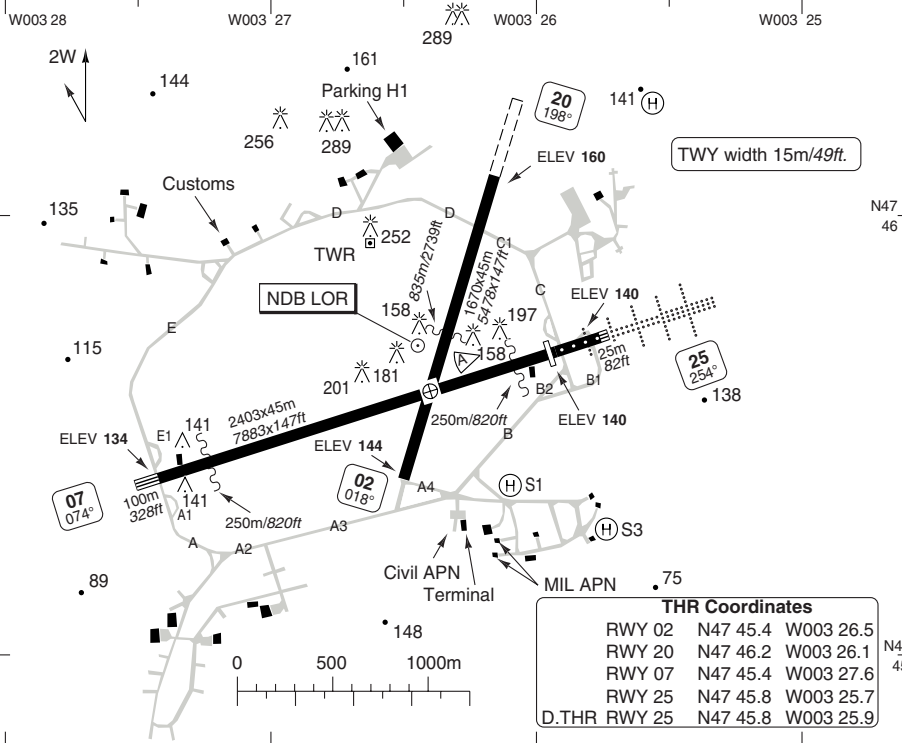
Runway 25

Takeoff length: 2403, Landing length: 2230

# AERODROME

Lorient TWR	RAD	ATIS
122.7	119.8	129.125
119.7	122.3	

AD Elev 160 ARP: N47 45.6 W003 26.4 RFF: CAT 6 AD HR: ①



RWY	Slope	TORA m/ft	LDA m/ft	ALS	REDL	Additional
02	+0.3	1670 / 5478	1670 / 5478	-	L ②	
20	-0.3	1670 / 5478	1670 / 5478	-	L ②	
07	0	2403 / 7883	2403 / 7883	-	H ②	P 3° (69), REIL
25	0	2403 / 7883	2230 / 7316	H-C	H ②	P 3° (60)

① MON-FRI: 06-15, Outside AD HR on PPR. ② White.

**EU OPS**

**TAKE OFF MINIMA**

RWY	Facilities	RVR		
		A	B	C D
07/25	RCL (day only) or RCL + REDL	400m		
	NIL (day only)	500m		

**AERODROME****GENERAL****1. WARNING**

- 1.1 Possible magnetic disturbances to Runway 07/25.
- 1.2 Runway 07/25 - critical obstacles close to runway.

**2. ARRIVAL**

- 2.1 Landing mirrors Runway 07/25 at 22m/72ft on left hand side of runway in use, 10ft asl.
- 2.2 Particular caution when approaching LOC antenna 150m/492ft from Runway 07 THR, 10ft asl.

**3. ARRESTING CABLES**

- 3.1 Runway 07/25: Inset 250m/820ft from both thresholds, height 9cm/3.5inch.
- 3.2 Runway 02/20: Arresting cable in middle of runway, height 9cm/3.5inch.
- 3.3 Light aircraft land either side of cable, LDA 835m/2740ft.

**4. AERODROME RESTRICTION**

- 4.1 Flight plan compulsory for non based aircraft.
- 4.2 Restricted use aerodrome.
- 4.3 Prior authorization from aerodrome commander.
- 4.4 Overflight prohibited below 1000ft.

**5. TAXIWAY RESTRICTION**

- 5.1 Unusable outside runway and taxiway.
- 5.2 Caution when taxiing due to numerous crossroads not all visible from Tower.
- 5.3 No information about obstacles.

**6. OMNIDIRECTIONAL DEPARTURE PROCEDURE**

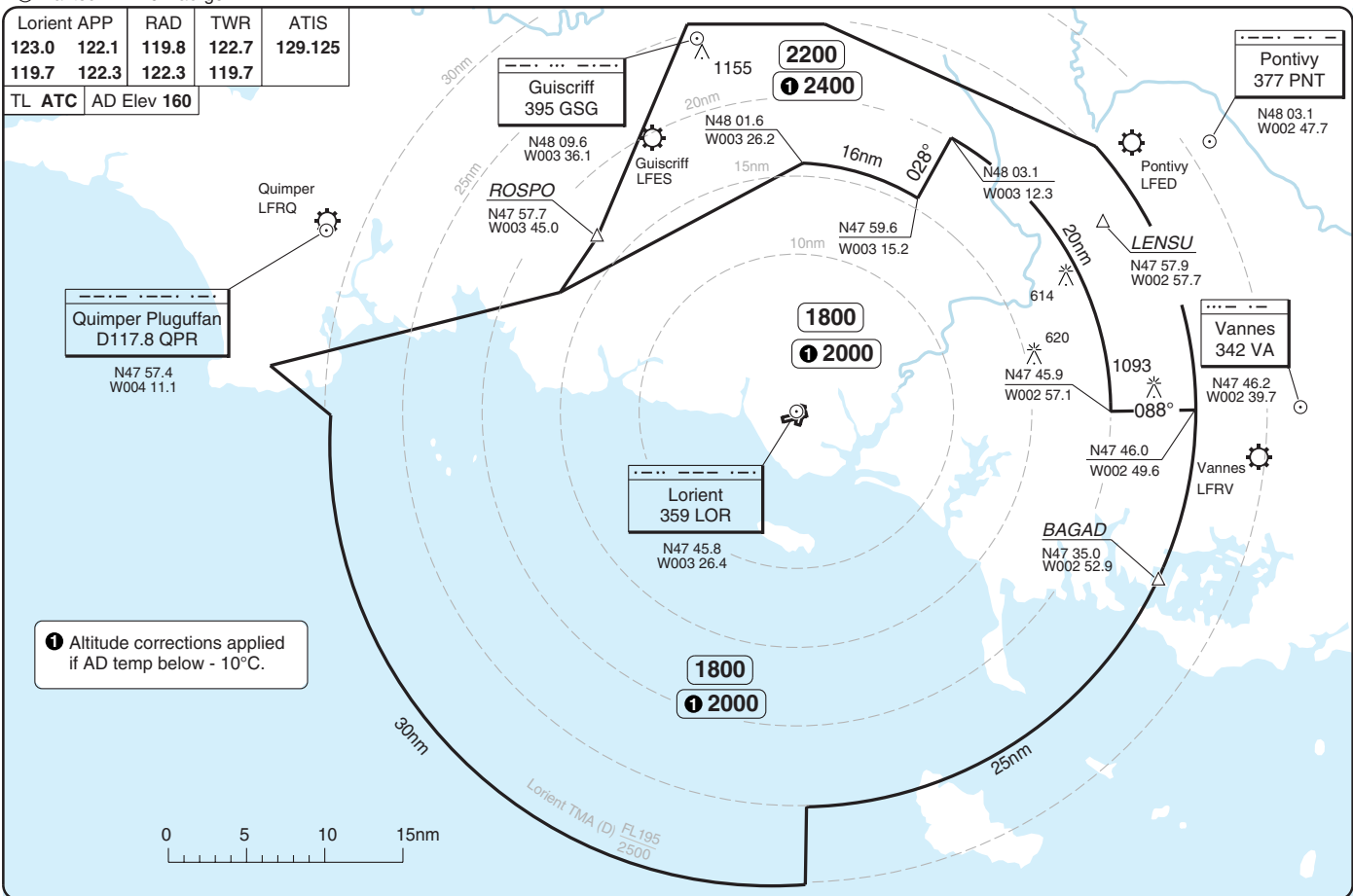
- 6.1 Runway 07/25  
Climb on Runway Heading to 1200ft, then proceed direct route climbing up to en route safety altitude.
- 6.2 Runway 25  
MNM CLIMB GRADIENT 4% up to 3500ft for departure with right turn.

© Navtech - lfrh01vaorg0

Lorient APP	RAD	TWR	ATIS
123.0	122.1	119.8	129.125
119.7	122.3	122.3	119.7
TL ATC	AD Elev 160		

THIS CHART IS A PART OF NAVIGRAPH NDAC AND IS INTENDED FOR FLIGHT SIMULATION USE ONLY

Change: New spec.



RADAR Minimum Altitudes

20 - 1 | 24 NOV 10

Lann Bihoué LORIENT

France - LFRH / LRT

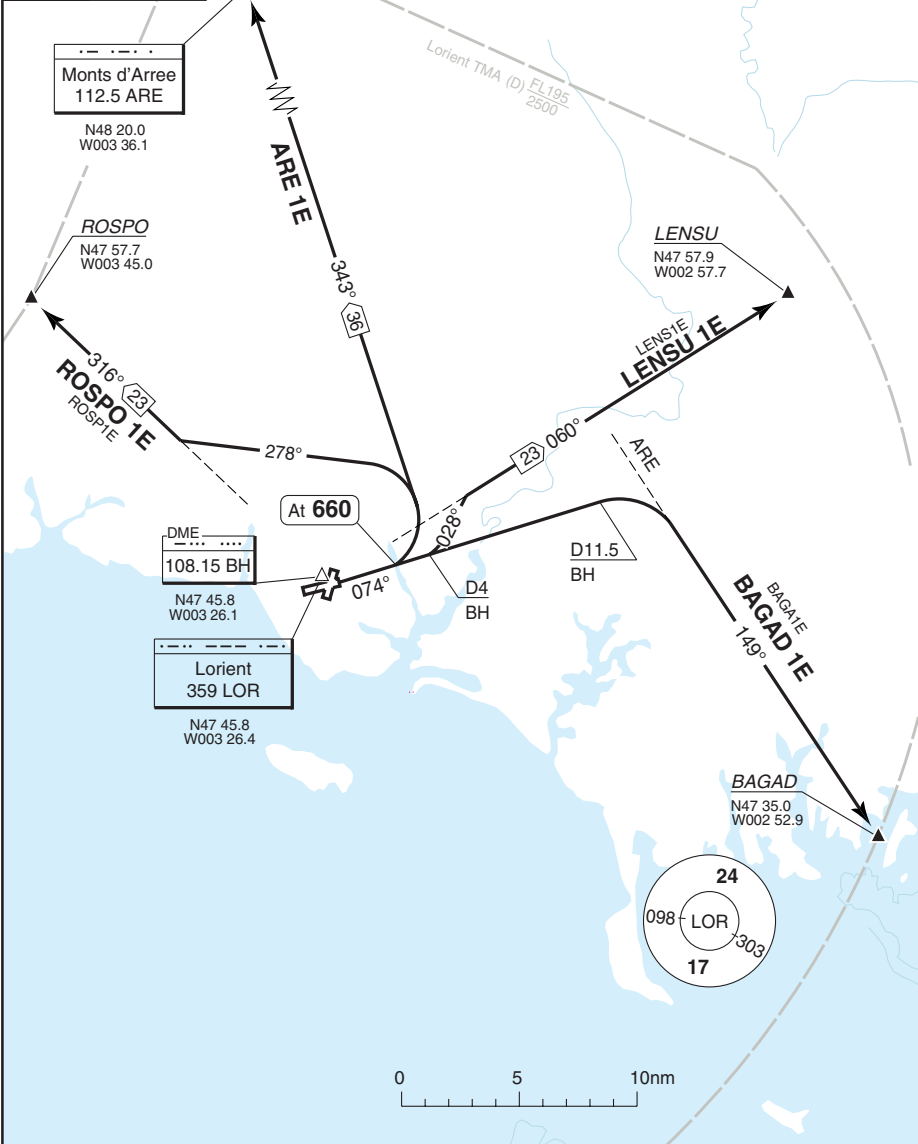
Reverse side blank

20 - 1

**SID RWY 07**

Lorient TWR	APP	RAD	ATIS
122.7	123.0	122.1	119.8
119.7	119.7	122.3	122.3

TA 5000 | AD Elev 160



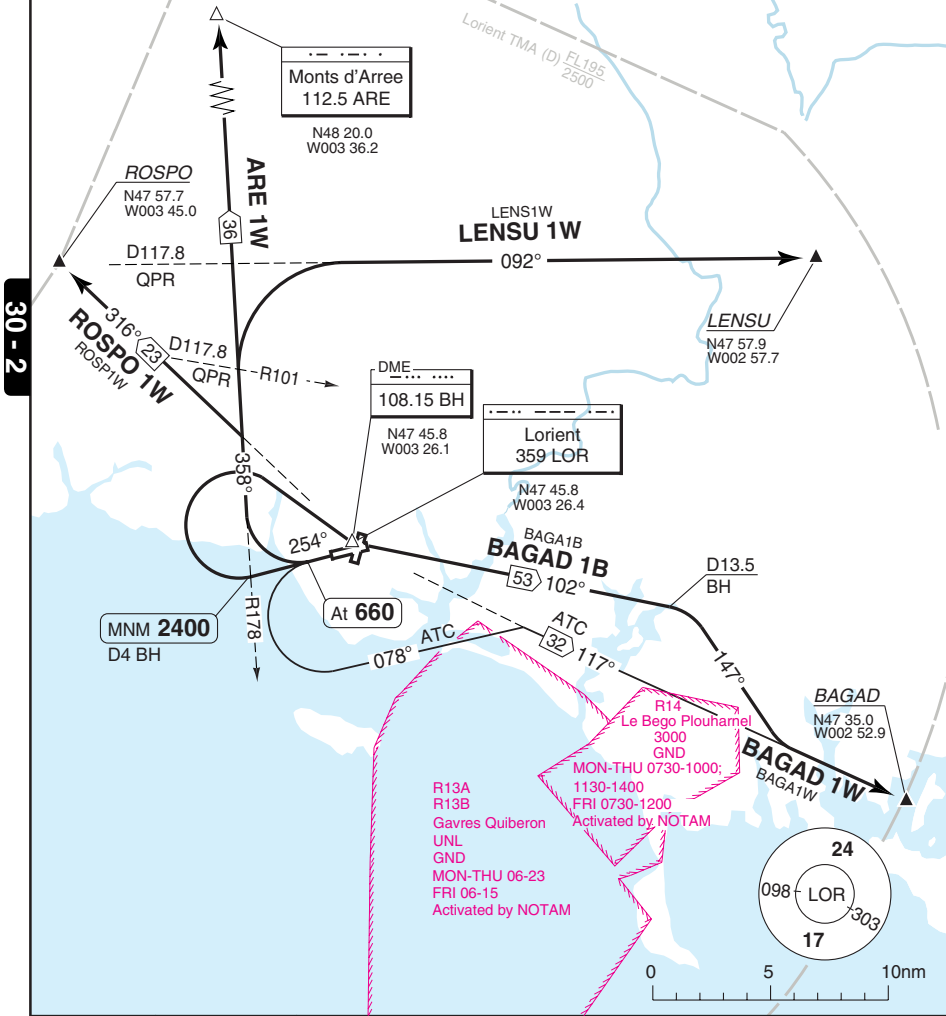
SID	Routeing
<b>ARE 1E</b>	Climb on 074°- at 660 turn left - intcp 343°/R163 ARE - ARE.
<b>BAGAD 1E</b>	Climb on 074°- at D11.5 BH turn right - intcp R149 ARE - BAGAD.
<b>LENSU 1E</b>	Climb on 074°- at D4 BH turn left - 028° - intcp 060° from LOR - LENSU.
<b>ROSPO 1E</b>	Climb on 074°- at 660 turn left - 278° - intcp 316° from LOR - ROSPO.

Change: New spec.

**SID RWY 25**

Lorient TWR	APP	RAD	ATIS
122.7	123.0 122.1	119.8	129.125
119.7	119.7 122.3	122.3	

TA 5000 AD Elev 160



30 - 2

SID	MNM CLIMB	Routing
<b>ARE 1W</b>	4% to 3500	Climb on 254° - at <b>660</b> turn right - intcp 358°/R178 ARE - ARE.
<b>BAGAD 1B</b>		Climb on 254° - MNM <b>2400</b> turn right (no turn before D4 BH) - LOR - intcp 102° from LOR - D13.5 BH turn right 147° - incpt 117° from LOR - BAGAD.
<b>BAGAD 1W</b>		(Dep. Not AVBL during R13 A/B activity). Climb on 254° - at <b>660</b> turn left 078° - intcp 117° from LOR - BAGAD.
<b>LENSU 1W</b>	4% to 3500	Climb on 254° - at <b>660</b> turn right - intcp 358°/R178 ARE - at R101 QPR turn right - intcp R092 QPR - LENSU.
<b>ROSPO 1W</b>	4% to 3500	Climb on 254° - at <b>660</b> turn right - intcp 358°/R178 ARE - intcp 316° from LOR - ROSPO.

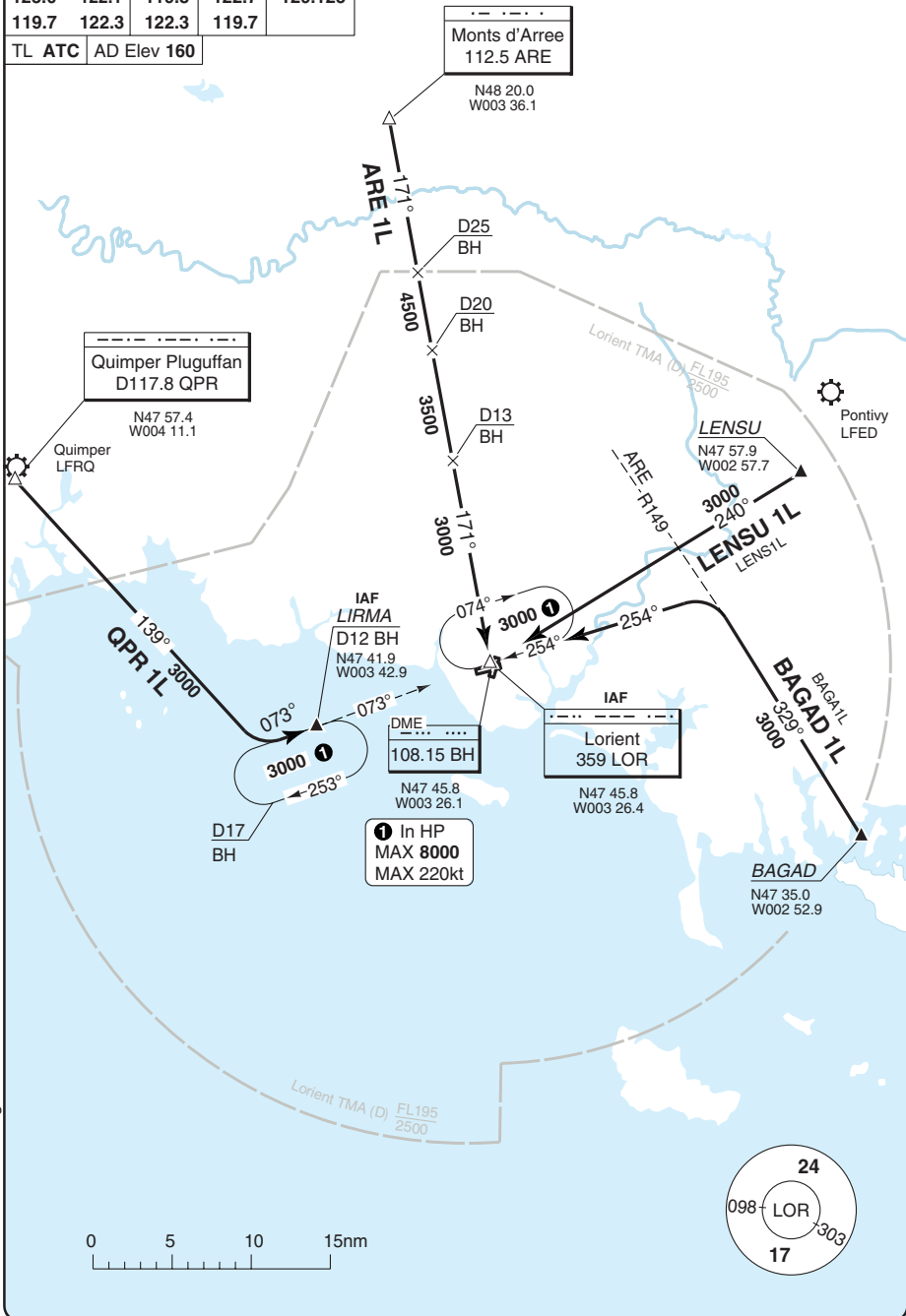
© Navtech - lfrh01.daorg

Change: New spec.

**THIS CHART IS A PART OF NAVIGRAPH NDAC AND IS INTENDED FOR FLIGHT SIMULATION USE ONLY**

**STAR RWY 07**

Lorient APP	RAD	TWR	ATIS
123.0	122.1	119.8	122.7
119.7	122.3	122.3	119.7
TL ATC	AD Elev 160		



40 - 1

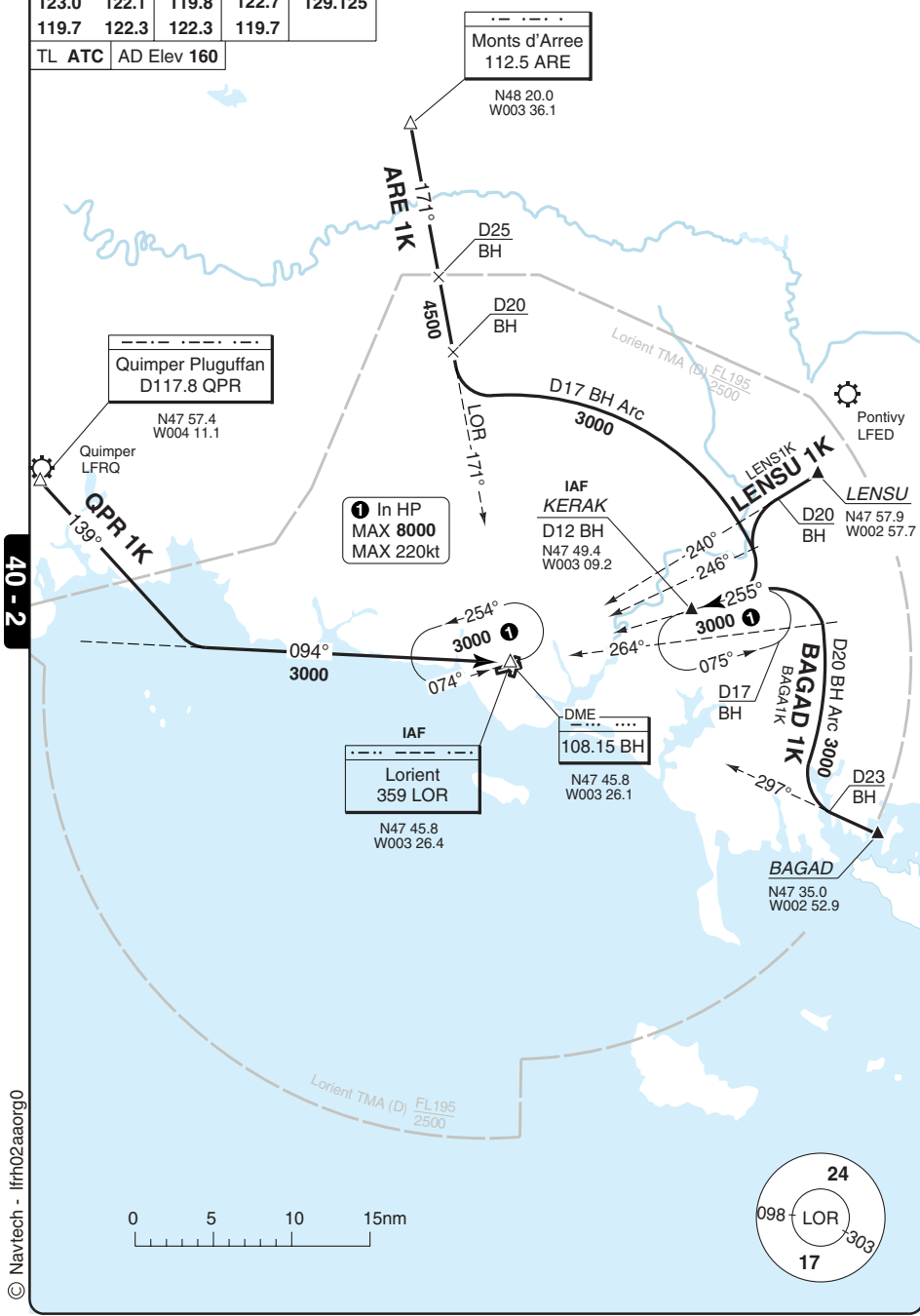
© Navtech - lfrh01aaorg0

Change: New spec.

**THIS CHART IS A PART OF NAVIGRAPH NDAC AND IS INTENDED FOR FLIGHT SIMULATION USE ONLY**

# STAR RWY 25

Lorient APP	RAD	TWR	ATIS
123.0	122.1	119.8	122.7
119.7	122.3	122.3	119.7
TL ATC	AD Elev 160		



© Navtech - lfrh02aaorg0

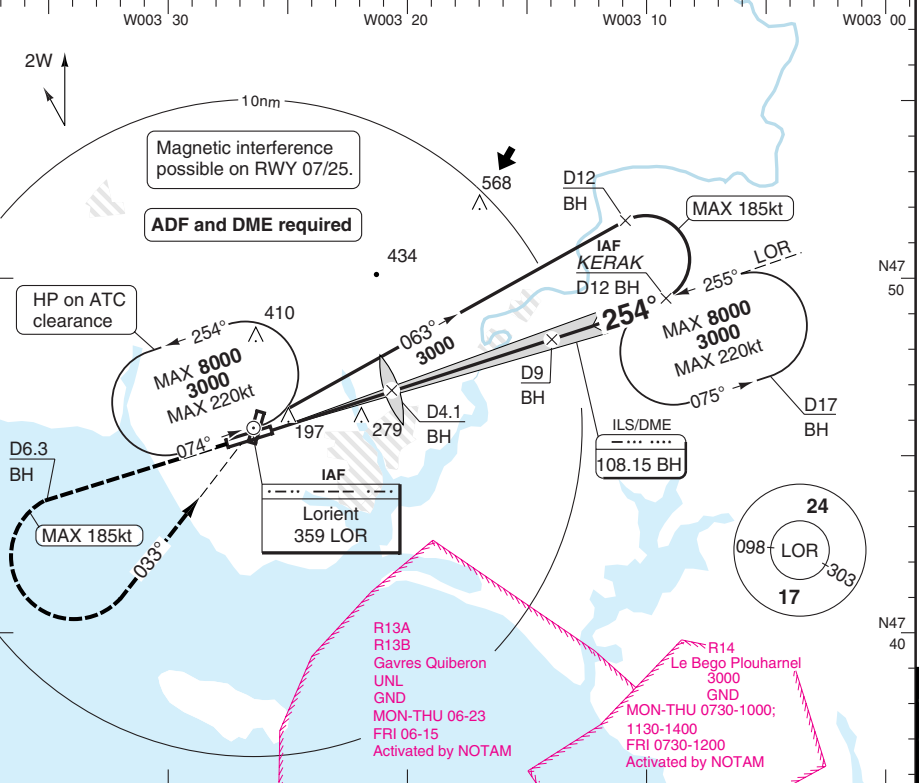
Change: New spec.

**THIS CHART IS A PART OF NAVIGRAPH NDAC AND IS INTENDED FOR FLIGHT SIMULATION USE ONLY**

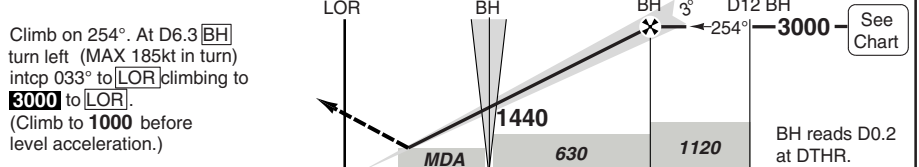
**ILS RWY 25**

Lorient APP	RAD	TWR	ATIS	
123.0 122.1	119.8	122.7	129.125	
119.7 122.3	122.3	119.7		

ILS/DME	108.15 BH	FAT	254°	DTHR Elev	140	AD Elev	160	TL ATC	TA	5000
---------	-----------	-----	------	-----------	-----	---------	-----	--------	----	------



MAPt	D0.8 BH
------	---------



TCH	57
-----	----

ACFT	ILS	LOC+DME	Circling	DME BH	3.0° ALT	LDA 2230x45
A		490 (350) 900m	710 (570) 1.5km		9	7316x147ft P 3° (60)
B	390 (250)	490 (350)	710 (570) 1.6km		7	
C	800m	1000m	810 (670) 2.4km		6	
D		490 (350) 1400m	840 (700) 3.6km		5	
					4	
					3	
					2	
					1.1	

GS	80	100	120	140	160
ROD 3.0°	430	540	650	750	860

© Navitech - lfrh01 iaip00

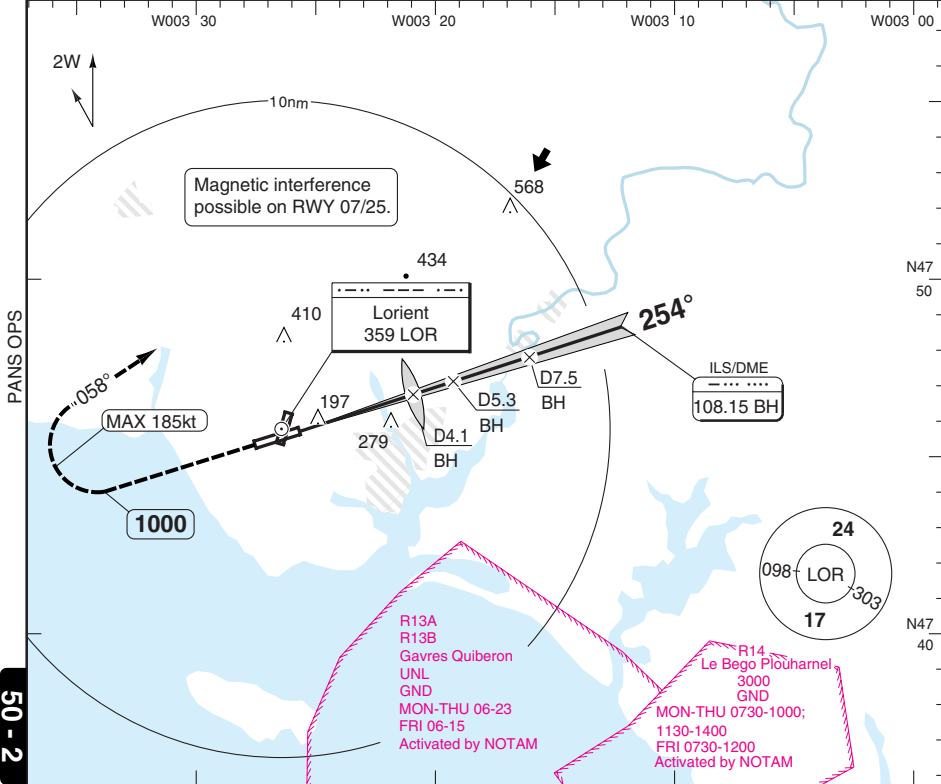
50 - 1

# ILS RWY 25 RADAR

# Lann Bihoué LORIENT

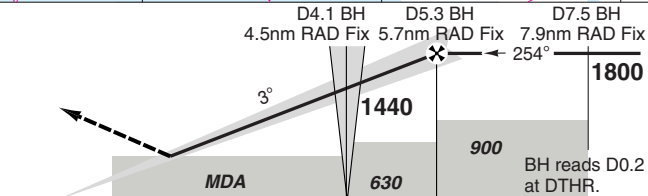
Lorient APP	RAD	TWR	ATIS
123.0 122.1	119.8	122.7	129.125
119.7 122.3	122.3	119.7	

ILS/DME	108.15 BH	FAT	254°	DTHR Elev	140	AD Elev	160	TL ATC	TA	5000
---------	-----------	-----	------	-----------	-----	---------	-----	--------	----	------



MAPt D0.8 BH / 1.2nm RAD Fix

Climb on 254°. At **1000** turn right (MAX 185kt in turn) on 058°, climbing to **1800**. (Climb to **1000** before level acceleration.)

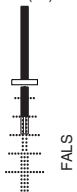


TCH 57

ACFT	ILS	LOC+DME	Circling
A		490 (350) 900m	710 (570) 1.5km
B	390 (250) 800m	490 (350)	710 (570) 1.6km
C		1000m	810 (670) 2.4km
D		490 (350) 1400m	840 (700) 3.6km

DME	3.0° ALT	LDA 2230x45
BH		7316x147ft
5.2	1800	P 3° (60)
4	1410	
3	1090	
2	770	
1.1	490	

GS	80	100	120	140	160
ROD 3.0°	430	540	650	750	860



© Navtech - lfrh02iatp00

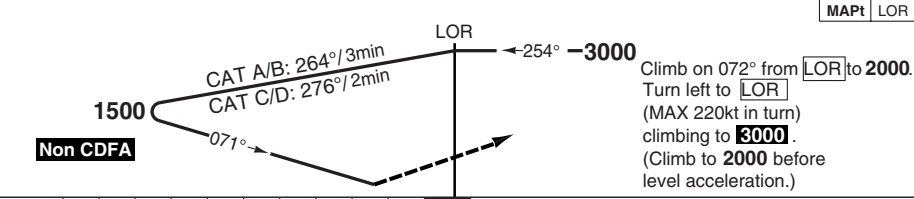
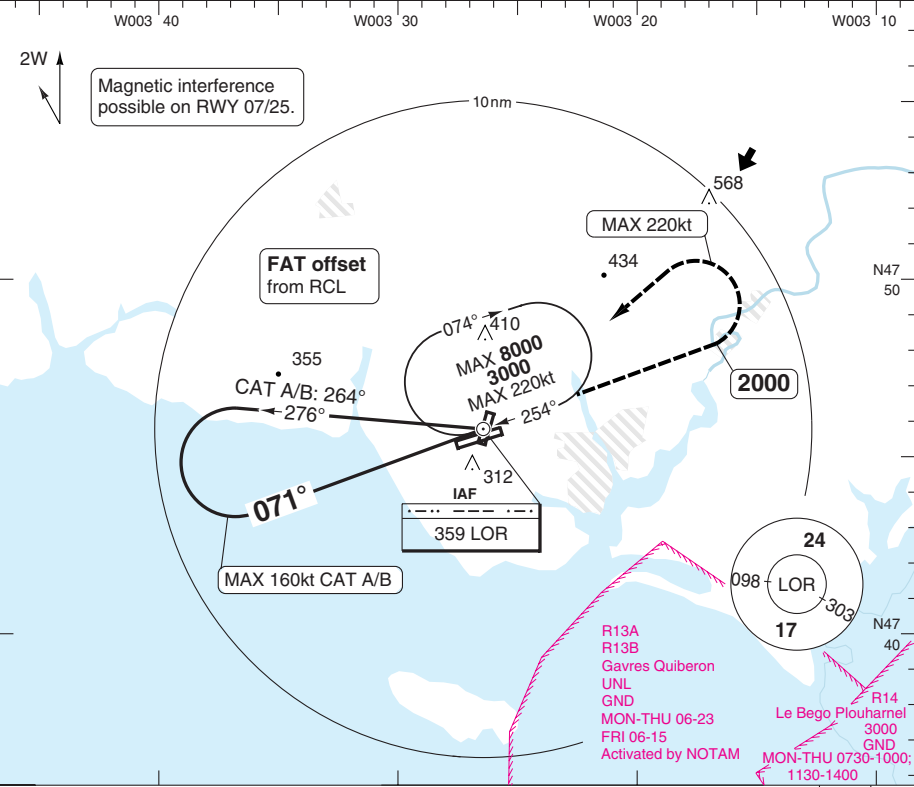
Change: New spec.

**THIS CHART IS A PART OF NAVIGRAPH NDAC AND IS INTENDED FOR FLIGHT SIMULATION USE ONLY**

**NDB RWY 07**

Lorient APP	RAD	TWR	ATIS	
123.0 122.1	119.8	122.7	129.125	
119.7 122.3	122.3	119.7		

NDB 359 LOR	FAT 071°	THR Elev 134	AD Elev 160	TL ATC	TA 5000
-------------	----------	--------------	-------------	--------	---------



nm	10	9	8	7	6	5	4	3	2	1	0
ACFT	<b>NDB</b>	<b>Circling</b>									
A	610 (480) 2400m	710 (580) 2.4km									
B											
C	610 (480) 2600m	810 (670) 2.6km									
D		840 (700) 3.6km									

LDA 2403x45  
7883x147ft  
P 3° (69)

NALS

© Navtech - lfrh03iatp00

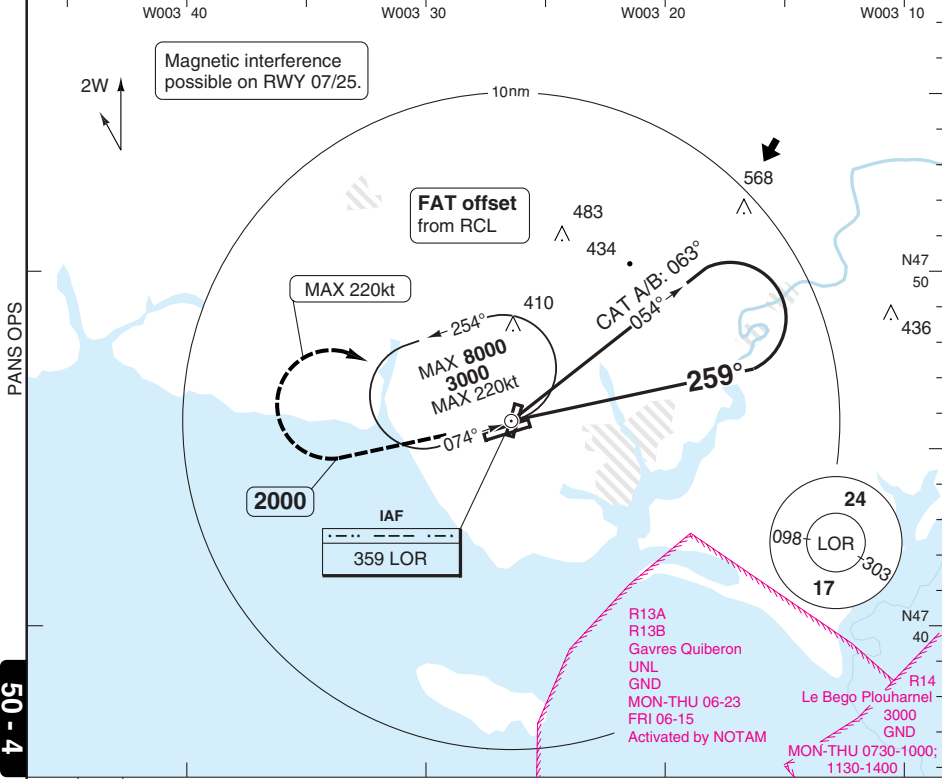
Change: New spec.

**THIS CHART IS A PART OF NAVGRAPH NDAC AND IS INTENDED FOR FLIGHT SIMULATION USE ONLY**

**NDB RWY 25**

Lorient APP	RAD	TWR	ATIS	
123.0 122.1	119.8	122.7	129.125	
119.7 122.3	122.3	119.7		

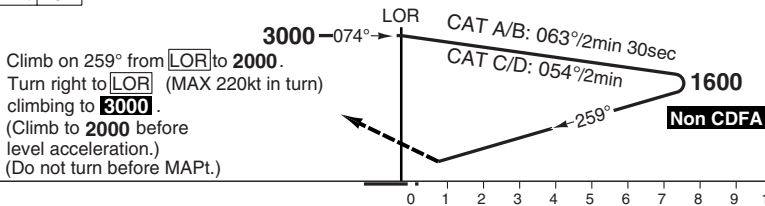
NDB 359 LOR	FAT 259°	DTHR Elev 140	AD Elev 160	TL ATC	TA 5000
-------------	----------	---------------	-------------	--------	---------



PANS OPS

50 - 4

MAPt LOR



Climb on 259° from **2000** to **3000**.  
Turn right to **074°** (MAX 220kt in turn) climbing to **3000**.  
(Climb to **2000** before level acceleration.)  
(Do not turn before MAPt.)

ACFT	NDB	Circling
A	690 (550) 2000m	710 (570) 2.0km
C	690 (550) 2200m	810 (670) 2.4km
D		840 (700) 3.6km

LDA 2230x45  
7316x147ft  
P 3° (60)

FALS

© Navtech - lfrh04iap00  
EU OPS

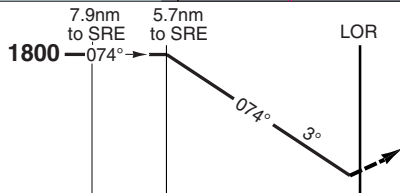
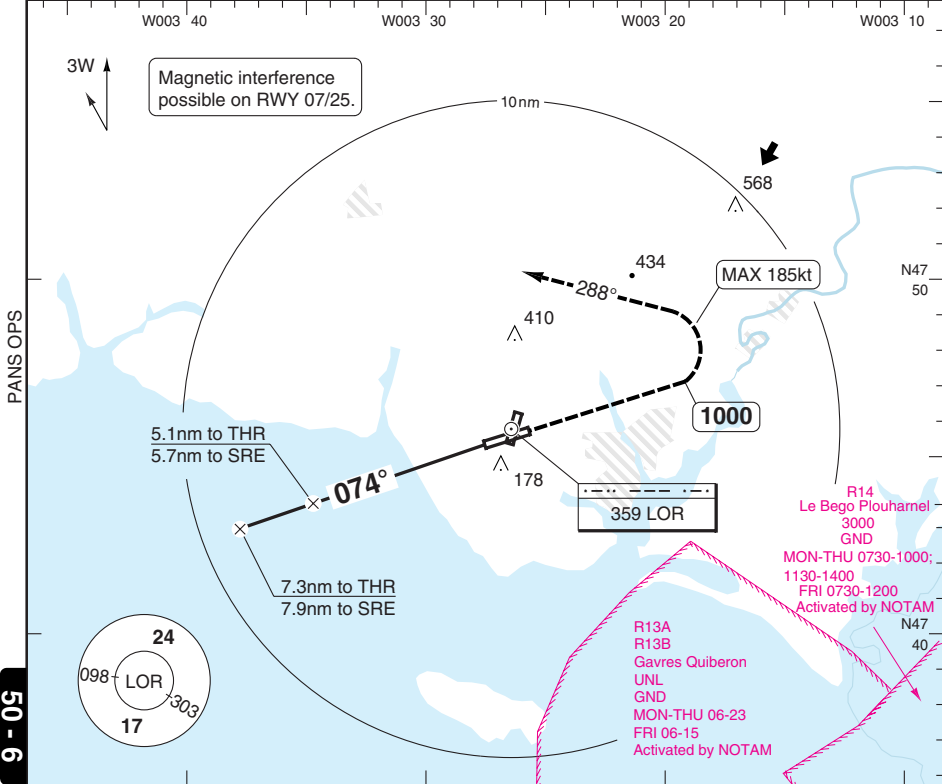
Change: New spec.



**PAR RWY 07** RADAR

Lorient APP	RAD	TWR	ATIS
123.0 122.1	119.8	122.7	129.125
119.7 122.3	122.3	119.7	

PAR	FAT	074°	THR Elev	134	AD Elev	160	TL ATC	TA	5000
-----	-----	------	----------	-----	---------	-----	--------	----	------



Climb on 074° to **1000**,  
turn left (MAX 185kt in turn)  
on 288° climbing to **1800**.  
(Climb to **1000** before  
level acceleration.)

nm	14	13	12	11	10	9	8	7	6	5	4	3	2	1	0	TCH 49
----	----	----	----	----	----	---	---	---	---	---	---	---	---	---	---	--------

ACFT	PAR	Circling
A	390 (250) 1300m	710 (580) 1.5km
B		710 (580) 1.6km
C		810 (670) 2.4km
D		840 (700) 3.6km

LDA 2403x45  
7883x147ft  
P 3° (69)



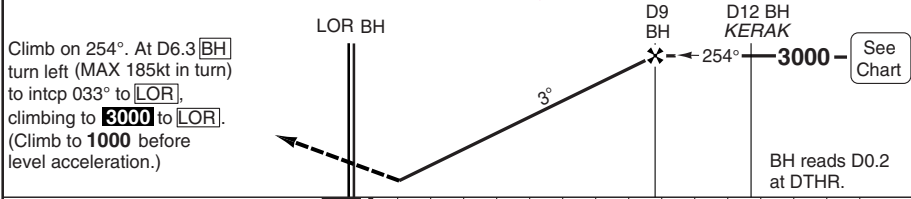
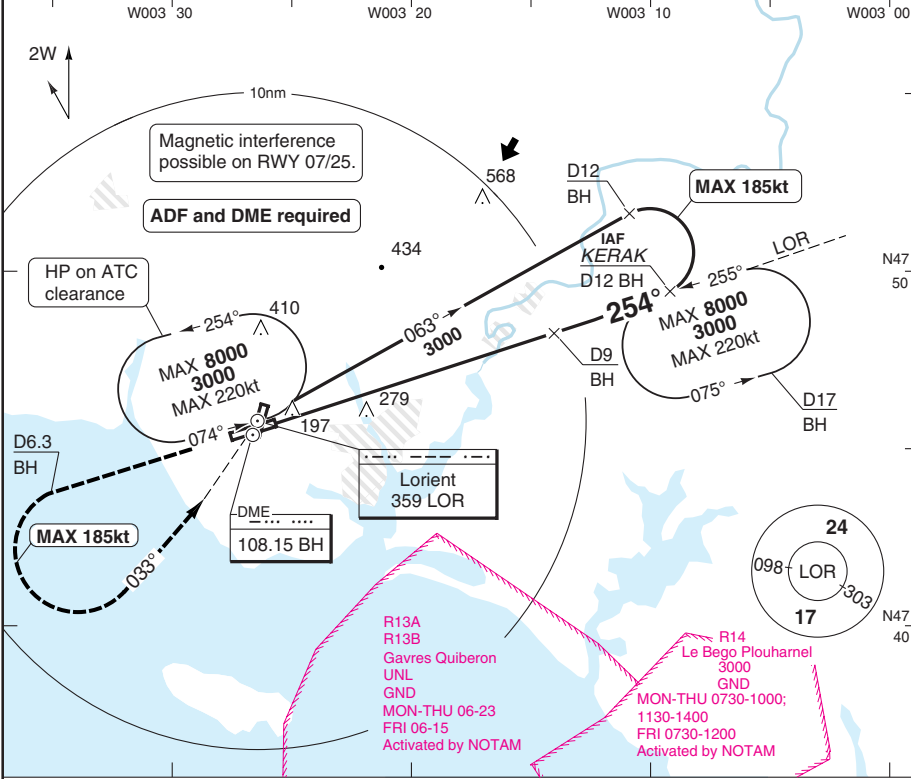
NALS

PAR RWY 25 DME

Lann Bihoué **LORIENT**

Lorient APP	RAD	TWR	ATIS
123.0 122.1	119.8	122.7	129.125
119.7 122.3	122.3	119.7	

PAR	FAT 254°	DTHR Elev 140	AD Elev 160	TL ATC	TA 5000
-----	----------	---------------	-------------	--------	---------



TCH 57

ACFT	PAR	Circling
A	390 (250) 800m	710 (570) 1.5km
B		710 (570) 1.6km
C		810 (670) 2.4km
D		840 (700) 3.6km



© Navitech - lfrh07iatp00

50 - 7

Change: New spec.

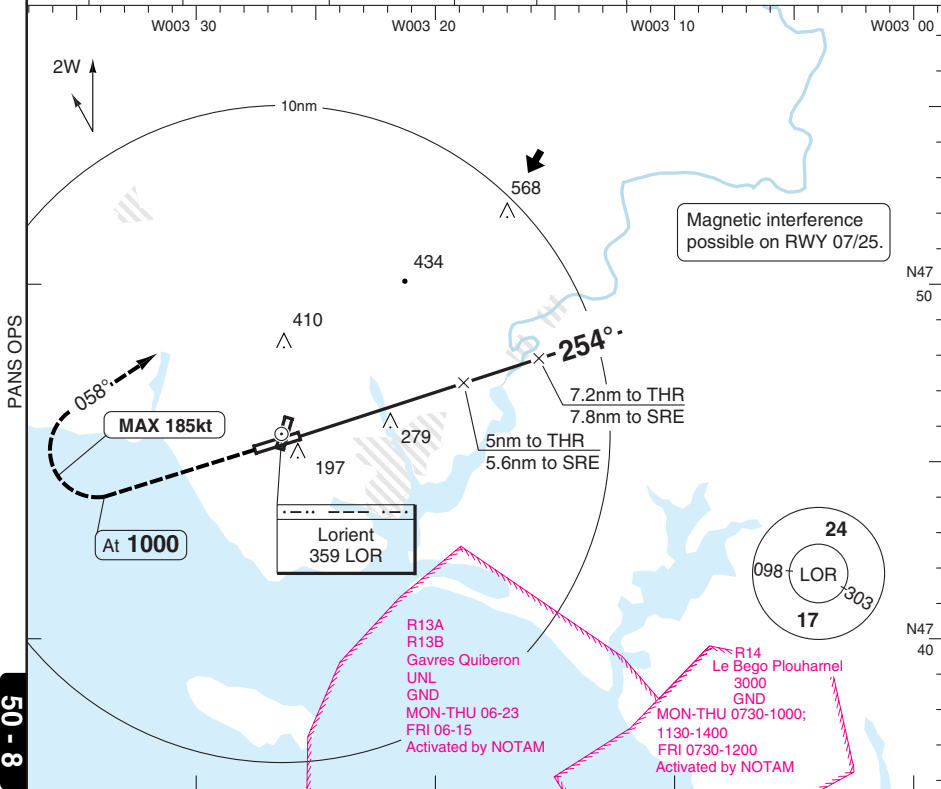
**THIS CHART IS A PART OF NAVIGRAPH NDAC AND IS INTENDED FOR FLIGHT SIMULATION USE ONLY**

# PAR RWY 25 RADAR

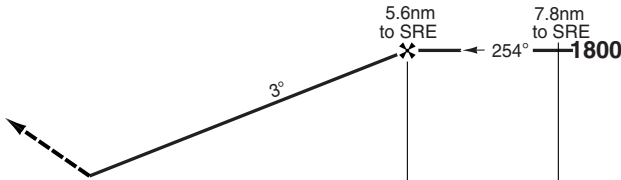
# Lann Bihoué LORIENT

Lorient APP	RAD	TWR	ATIS
123.0	122.1	119.8	122.7
119.7	122.3	122.3	119.7

PAR	FAT 254°	DTHR Elev 140	AD Elev 160	TL ATC	TA 5000
-----	----------	---------------	-------------	--------	---------



Climb on 254°. At 1000 turn right (MAX 185kt in turn) on 058° climbing to **1800**. (Climb to 1000 before level acceleration.)



TCH 57

ACFT	PAR	Circling
A	390 (250) 800m	710 (570) 1.5km
B		710 (570) 1.6km
C		810 (670) 2.4km
D		840 (700) 3.6km

LDA 2230x45  
7316x147ft  
P 3° (60)



# CIRCLING RWY 07 VPT

Lann Bihou **LORIENT**

Lorient APP	RAD	TWR	ATIS
123.0 122.1	119.8	122.7	129.125
119.7 122.3	122.3	119.7	

FAT 074°	THR Elev 134	AD Elev 160	TL ATC	TA 5000
----------	--------------	-------------	--------	---------

W003 30

W003 20

Magnetic interference possible on RWY 07/25.



N47 50

PANS OPS

CAT D: MAX 180kt

CAT: C/D

254° (1.4)

254° (2)

CAT: A/B

299° (2.2)

074°

D1.2 BH

DME

108.15 BH

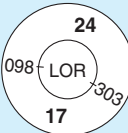
Lorient 359 LOR

368

302

308

292



R13A  
R13B  
Gavres Quiberon  
UNL  
GND  
MON-THU 06-23  
FRI 06-15  
Activated by NOTAM

N47 40

50 - 9

ACFT	Circling
A	610 (450) 1.5km
B	660 (500) 1.6km
C	770 (610) 2.4km
D	860 (700) 3.6km

LDA 2403x45  
7883x147ft  
P 3° (69)



NALS

Reverse side blank

## JAR-OPS Landing Minima

Lann Bihoué **LORIENT**

The following Minima is for Public Transport aircraft and conforms to JAR-OPS1 regulations.

STRAIGHT-IN APPROACH		C				D			
R/W	Procedure	DA/ MDA QNH ft	DH/ MDH QFE ft	RVR m	RVR No ALS m	DA/ MDA QNH ft	DH/ MDH QFE ft	RVR m	RVR No ALS m
07	PAR	<b>390</b>	250	1000	N/A	<b>390</b>	250	1000	N/A
07	NDB	<b>620</b>	480	2000	N/A	<b>620</b>	480	2000	N/A
25	ILS	<b>390</b>	250	800	1000	<b>390</b>	250	800	1000
25	LOC	<b>490</b>	350	1000	1800	<b>490</b>	350	1400	2000
25	PAR	<b>390</b>	250	800	1000	<b>390</b>	250	800	1000
25	NDB	<b>690</b>	550	1200	2000	<b>690</b>	550	1600	2000

Notes:

CIRCLING		C			D		
R/W	Procedure	MDA QNH ft	MDH QFE ft	Vis m	MDA QNH ft	MDH QFE ft	Vis m
07	VPT (1)	<b>770</b>	610	2400	<b>860</b>	700	3600
07	SRA to PAR	<b>830</b>	670	2400	<b>870</b>	710	3600
07	All other procs	<b>830</b>	670	2400	<b>860</b>	700	3600
25	All procs	<b>830</b>	670	2400	<b>860</b>	700	3600

Notes:

(1) Cat D limited at 180 kt.

TAKE-OFF		C		D	
Runway	Facilities	RVR	Vis	RVR	Vis
07/25	-	400	-	400	-

Notes:

## JAR-OPS Landing Minima

Lann Bihoué **LORIENT**

The following Minima is for Public Transport aircraft and conforms to JAR-OPS1 regulations.

STRAIGHT-IN APPROACH		A				B			
R/W	Procedure	DA/ MDA QNH ft	DH/ MDH QFE ft	RVR m	RVR No ALS m	DA/ MDA QNH ft	DH/ MDH QFE ft	RVR m	RVR No ALS m
07	PAR	<b>390</b>	250	1000	N/A	<b>390</b>	250	1000	N/A
07	NDB	<b>620</b>	480	1500	N/A	<b>620</b>	480	1500	N/A
25	ILS	<b>390</b>	250	800	1000	<b>390</b>	250	800	1000
25	LOC	<b>490</b>	350	900	1500	<b>490</b>	350	1000	1500
25	PAR	<b>390</b>	250	800	1000	<b>390</b>	250	800	1000
25	NDB	<b>690</b>	550	1000	1500	<b>690</b>	550	1200	1500

Notes:

CIRCLING		A			B		
R/W	Procedure	MDA QNH ft	MDH QFE ft	Vis m	MDA QNH ft	MDH QFE ft	Vis m
07	VPT (1)	<b>610</b>	450	1500	<b>660</b>	500	1600
07	SRA to PAR	<b>730</b>	570	1500	<b>730</b>	570	1600
07	All other procs	<b>740</b>	580	1500	<b>740</b>	580	1600
25	All procs	<b>730</b>	570	1500	<b>730</b>	570	1600

Notes:

(1) Cat D limited at 180 kt.

TAKE-OFF		A		B	
Runway	Facilities	RVR	Vis	RVR	Vis
07/25	-	400	-	400	-

Notes: