

Airport information:

Country: France

City: SAINT YAN

Coordinates: N 46° 24.4', E004 01.3

Elevation: 796

Customs:

Fuel: 100LL, Jet

RFF: CAT 2

hours: (S)Mon-Fri: 0400-2200; Sat: 0600-1000,1200-1700; Sun: O/R Sat before 15 (W)+1hr

Runways:

Runway 15L

Takeoff length: 2030, Landing length: 2030

Runway 15R

Takeoff length: 1510, Landing length: 1510

Runway 33L

Takeoff length: 1510, Landing length: 1420

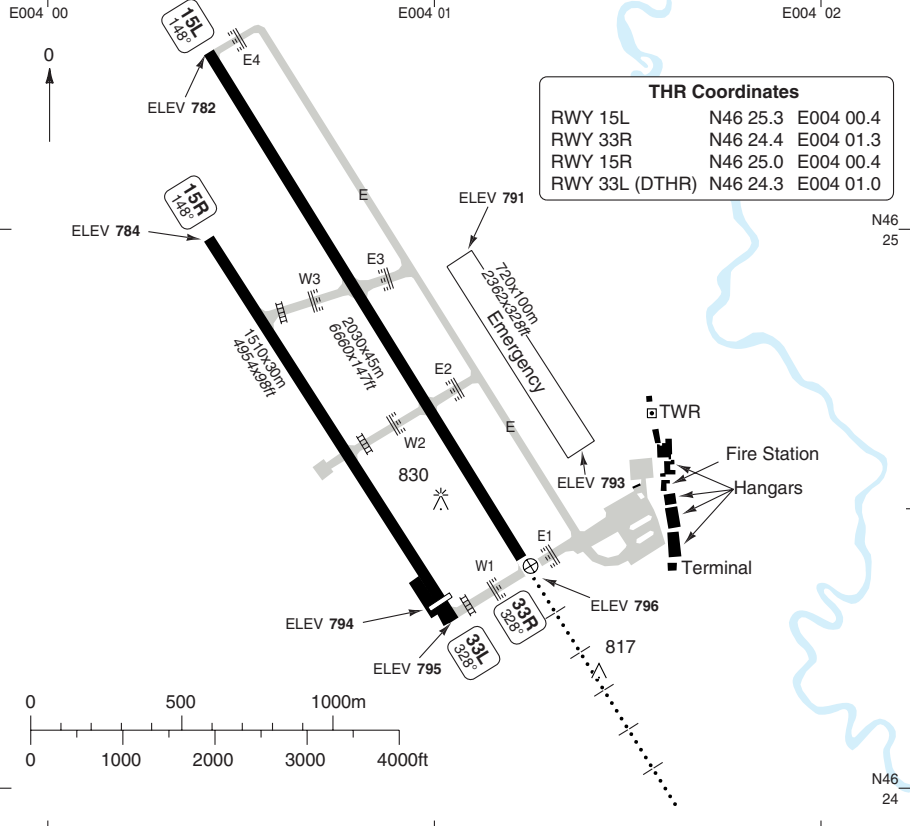
Runway 33R

Takeoff length: 2030, Landing length: 2030

AERODROME

Saint Yan GND 121.8	TWR 1 122.3	ATIS 132.475	1 Absence of ATS: Obtain QNH from Clermont ATIS 136.4
-------------------------------	------------------------------	------------------------	--

AD Elev 796	ARP: N46 24.4 E004 01.3	RFF: 2	AD HR: 3
--------------------	-------------------------	---------------	-----------------



RWY	Slope	TORA m/ft	LDA m/ft	ALS	REDL	Additional
15L	+0.2	2030 / 6660	2030 / 6660	-	H	P 3° (53)
33R	-0.2	2030 / 6660	2030 / 6660	H-E	H	P 3° (57)
15R	+0.2	1510 / 4954	1510 / 4954	-	-	-
33L	-0.2	1510 / 4954	1420 / 4658	-	-	-

2 CAT 2: MON-FRI (except HOL): 07-21; Other time PPR 72hr. CAT 4: PPR 72hr.

3 MON-FRI (except HOL) 06-22; WIN 07-21; Other time PPR 72hr.

EU OPS		TAKE OFF MINIMA	
RWY	Facilities	RVR A B C	
15L/33R a	RCL (day only) or RCL + REDL NIL (day only)	400m 500m	
a When TWR CLSD (day only): 500m			

© Navtech - ifin01laorg0

Change: New spec.

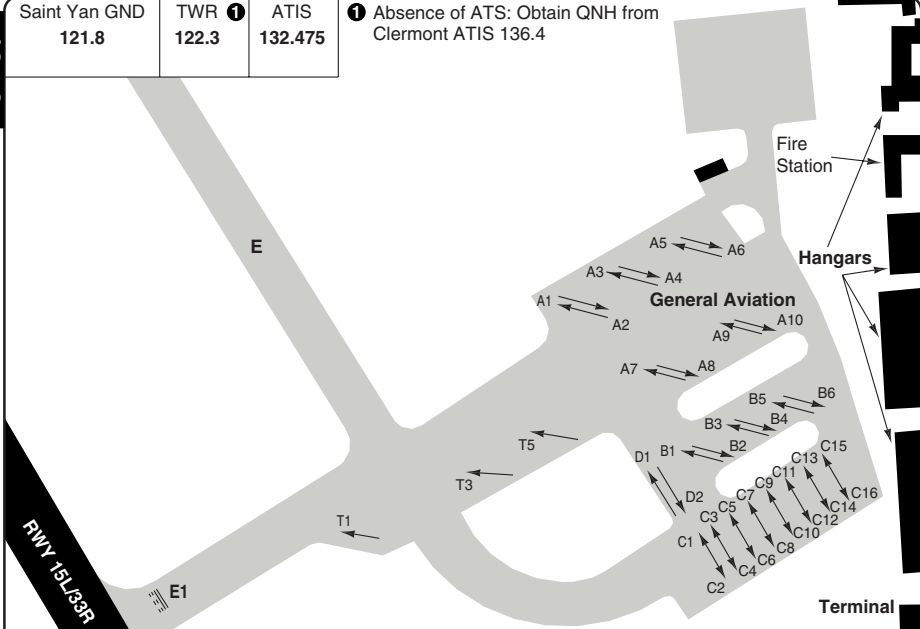
THIS CHART IS A PART OF NAVIGRAPH NDAC AND IS INTENDED FOR FLIGHT SIMULATION USE ONLY

AERODROME

10 - 2

Saint Yan GND 121.8	TWR 1 122.3	ATIS 132.475
-------------------------------	------------------------------	------------------------

1 Absence of ATS: Obtain QNH from Clermont ATIS 136.4



GENERAL

- 1. AERODROME RESTRICTION**
AD prohibited to gliders.
- 2. WARNING**
 - 2.1 Wildlife strike hazard.
 - 2.2 CTR part 2 may be downgraded to class G for the benefit of special activities according to modalities described by the protocol between users and Saint Yan ACC.
 - 2.3 Paragliding activity
NE of AD, up to 1500ft
SAT, SUN and HOL 0700-SS+30.
 - 2.4 Aerobatics activity at AD (NR 6458)
2300-FL45
0700-SS.
- 3. PREFERENTIAL RWY SYSTEM**
QFU 329°.
- 4. SPEED**
MAX 250kt below FL100.
- 4. CIRCUTS**
 - 4.1 RWY 15 right hand circuit.
 - 4.2 Low ALT traffic circuits:
West of AD only within the context of training flights with an instructor on board. MNM **1300**.

5. TRAFFIC NOTE

Avoid overflying built-up areas.

ARRIVAL

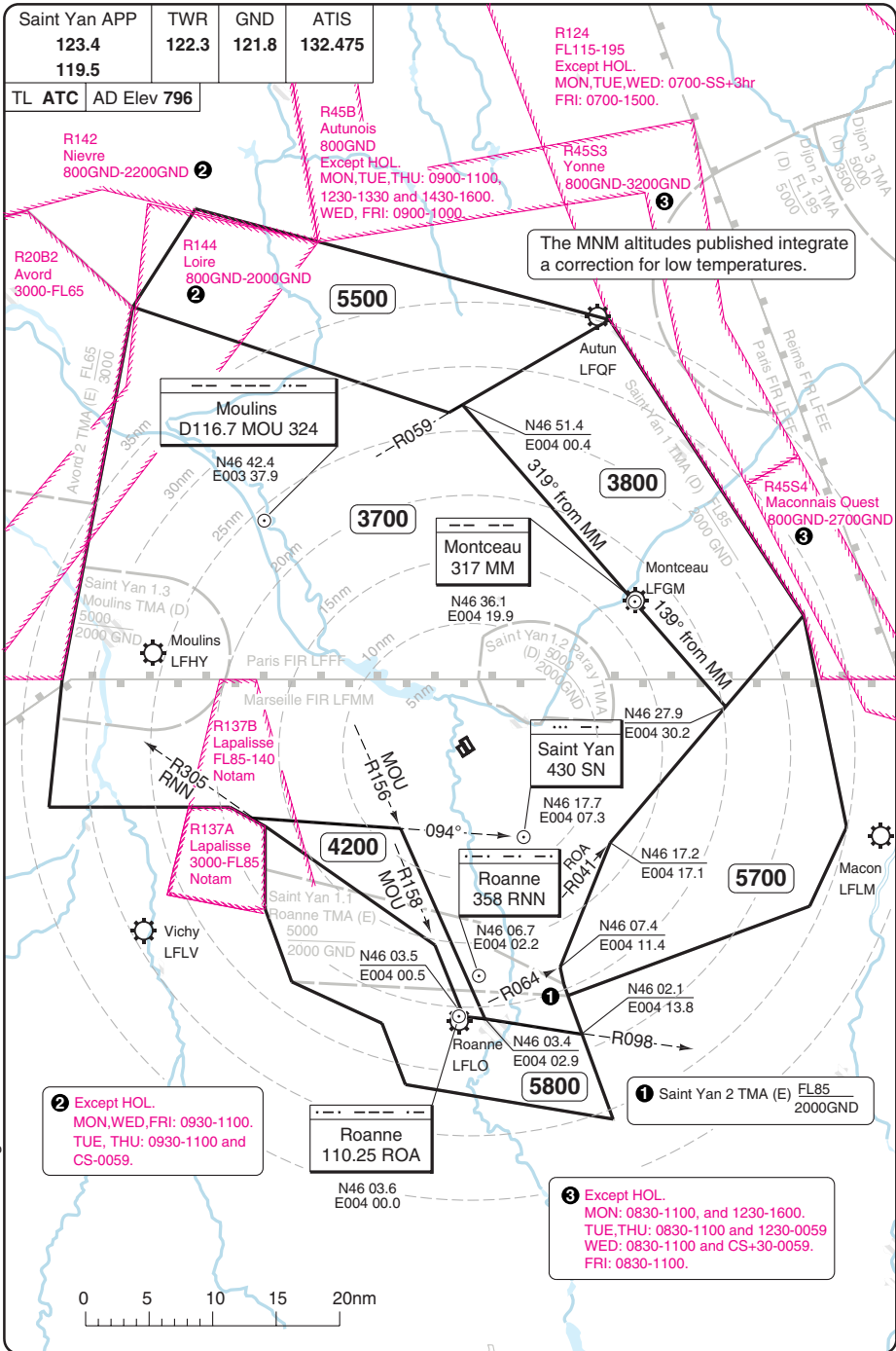
- 1. COM FAIL**
 - 1.1 Squawk 7600.
 - 1.2 Apply national regulation.
COM FAIL followed by MISAP:
Carry out MISAP and commence a second approach. If second attempt fails, leave TMA via SID LESPI 5N or 4S according to RWY in use and seek VMC.

DEPARTURE

- 1. OMNIDIRECTIONAL DEP PROCEDURE**
RWY 15L, 33R:
Special instructions from APP.
Climb on RWY HDG to **1300** then direct route climbing to en-route safety altitude.
- 2. COM FAIL**
 - 2.1 Squawk 7600.
 - 2.2 In VMC: Return to aerodrome.
 - 2.3 In IMC: Continue flight to TMA limits, complying with SID at last assigned FL or, if not compatible with obstacles, at first safe FL then continue according to flight plan.

RADAR Minimum Altitudes

Saint Yan APP	TWR	GND	ATIS
123.4	122.3	121.8	132.475
119.5			
TL ATC	AD Elev 796		



The MNM altitudes published integrate a correction for low temperatures.

2 Except HOL.
MON, WED, FRI: 0930-1100.
TUE, THU: 0930-1100 and CS-0059.

1 Saint Yan 2 TMA (E) FL85
2000GND

3 Except HOL.
MON: 0830-1100, and 1230-1600.
TUE, THU: 0830-1100 and 1230-0059
WED: 0830-1100 and CS+30-0059.
FRI: 0830-1100.

© Navitech - ifin01vaorg0

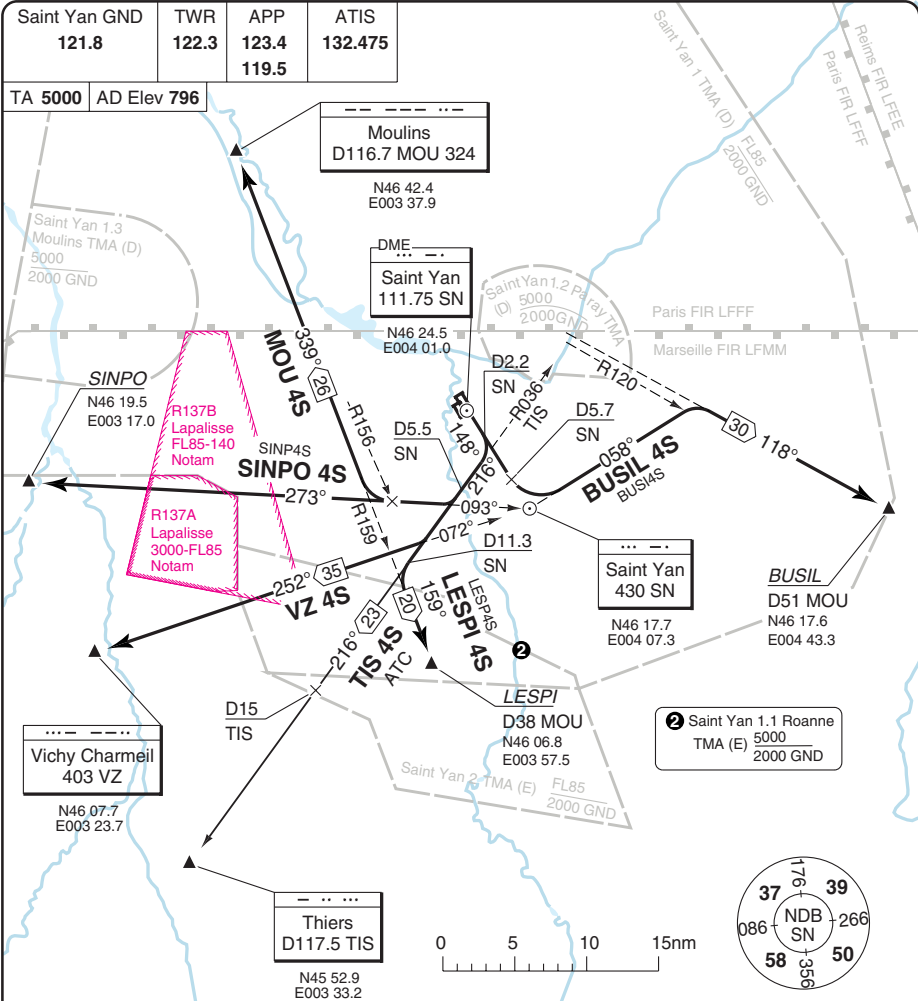
20 - 1

Reverse side blank

Change: New spec.

THIS CHART IS A PART OF NAVIGHANT NDAC AND IS INTENDED FOR FLIGHT SIMULATION USE ONLY

SID RWY 15L CAT A/B/C



30 - 1

SID	MMN Climb	Routeing
(INITIAL CLIMB) (Except BUSIL 4C)		Climb on 148° to D2.2 SN - turn right - 216° - follow SID.
BUSIL 4S		Climb on 148° to D5.7 SN - turn left - 058° from SN - at R120 MOU - turn right - intcp R118 MOU - BUSIL.
LESPI 4S	9.1% to FL60	At D11.3 SN turn left - intcp R159 MOU - LESPI.
MOU 4S		273° from SN - at R156 MOU turn right - intcp 339°/R159 MOU - MOU.
SINPO 4S	6% to FL60	At D5.5 SN turn right - 273° from SN - SINPO.
TIS 4S (By ATC)	7.7% to FL60	TIS.
VZ 4S	6.3% to FL60	252° from SN - VZ.

© Navitech - ifin01daorg0

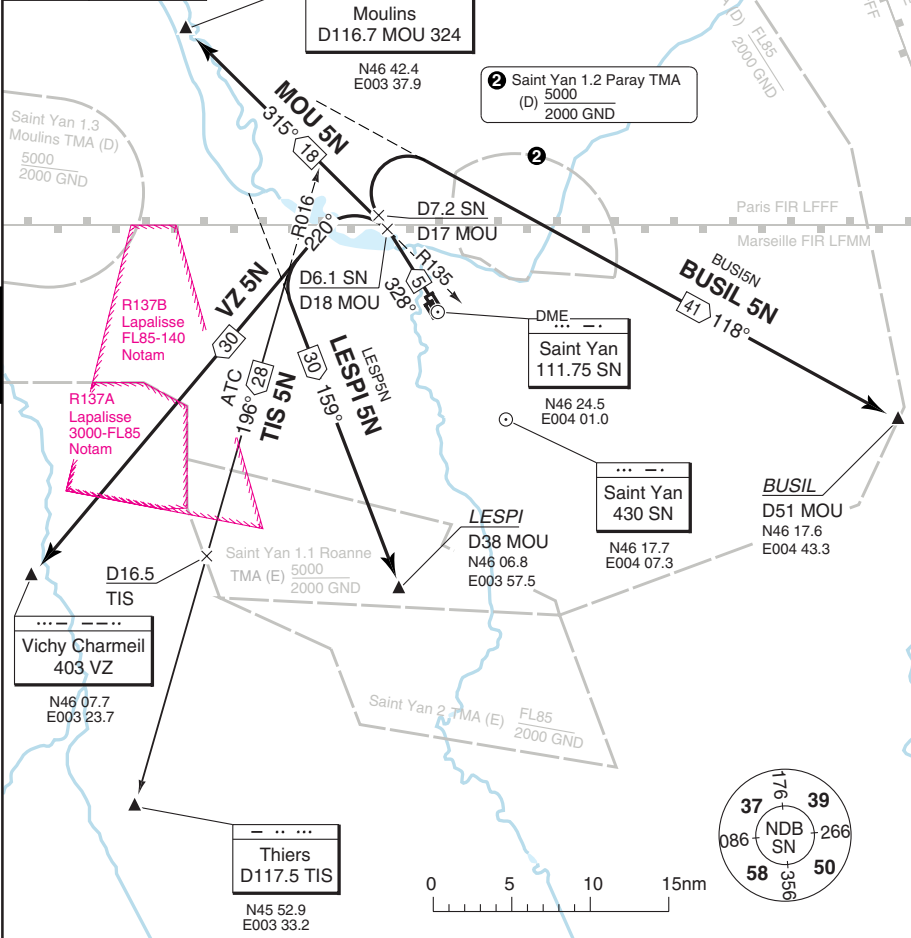
Change: New spec.

THIS CHART IS A PART OF NAVIGRAPH NDAC AND IS INTENDED FOR FLIGHT SIMULATION USE ONLY

SID RWY 33R CAT A/B/C

Saint Yan GND 121.8	TWR 122.3	APP 123.4 119.5	ATIS 132.475
-------------------------------	---------------------	-------------------------------------	------------------------

TA 5000 AD Elev 796



SID	MMN Climb	Routing
(INITIAL CLIMB) (Except BUSIL 5N)		Climb on 328° to D18 MOU/D6.1 SN - follow SID.
BUSIL 5N	11.8% to FL60 when TMA 1.2 PARAY downgraded to class G.	Climb on 328° to D17 MOU/D7.2 SN - turn right - intcp R118 MOU - BUSIL.
LESPI 5N	4.4% to FL60	Turn left - 220° - intcp R159 MOU - LESPI.
MOU 5N		Turn left - intcp 315°/R135 MOU - MOU.
TIS 5N (By ATC)	4.4% to FL60	Turn left - 220° - intcp 196°/R016 TIS - TIS.
VZ 5N	4.4% to FL60	Turn left - 220° - VZ.

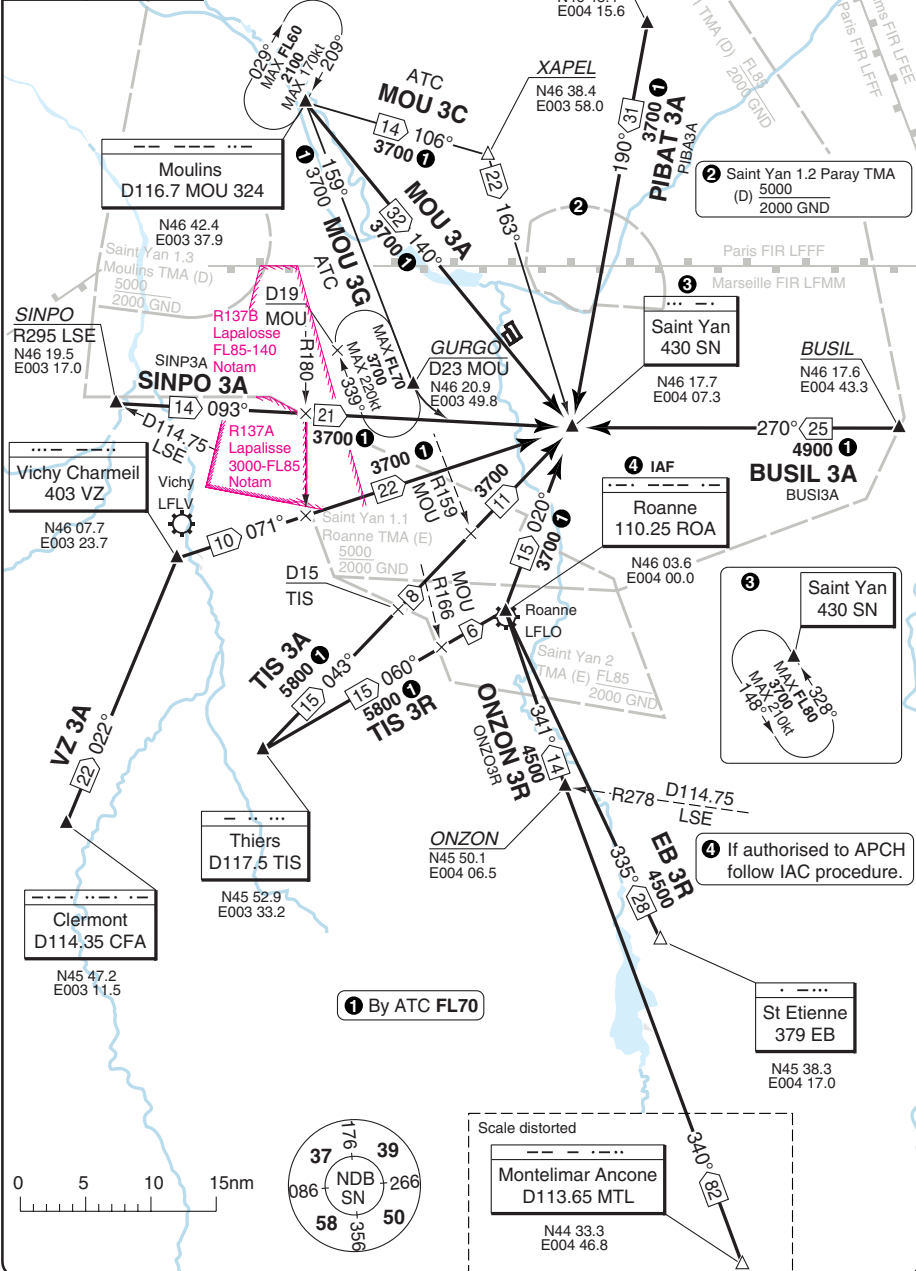
© Navitech - ifin02daorg0

Change: New spec.

THIS CHART IS A PART OF NAVIGRAPH NDAC AND IS INTENDED FOR FLIGHT SIMULATION USE ONLY

STAR CAT A/B/C

Saint Yan APP	TWR	GND	ATIS
123.4	122.3	121.8	132.475
119.5			
TL	ATC	AD Elev 796	



40 - 1

Reverse side blank

© Navitech - ifin01aorog0

Change: New spec.

THIS CHART IS A PART OF NAVIGRAPH NDAC AND IS INTENDED FOR FLIGHT SIMULATION USE ONLY

INITIAL APCH RWY 33R CAT A/B/C

SAINT YAN

Saint Yan APP 123.4 119.5	TWR ① 122.3	GND 121.8	ATIS 132.475
---------------------------------	----------------	--------------	-----------------

① Absence of ATS: Obtain QNH from Clermont ATIS 136.4

THR Elev 796	AD Elev 796	TL ATC	TA 5000
--------------	-------------	--------	---------

For Final APCH
 ILS Y RWY 33R See 50-2
 ILS Z RWY 33R See 50-3
 NDB Y RWY 33R See 50-5
 NDB Z RWY 33R See 50-6

Procedures usable on ATC instruction.

RACETRACK
 Speed above 130kt: 1min
 Speed below 130kt: 1min 30sec
 Entries within racetrack are protected.

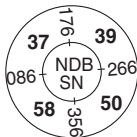
② MAX limit for CAT C

MAX 210kt

IAF
 Roanne
 110.25 ROA

MAX 800
 By ATC FL70
 MAX 210kt

IAF
 Saint Yan
 430 SN
 D8.1 SN
 D32 MOU



PANS OPS

50 - 1

© Navitech - ifin01iaip00

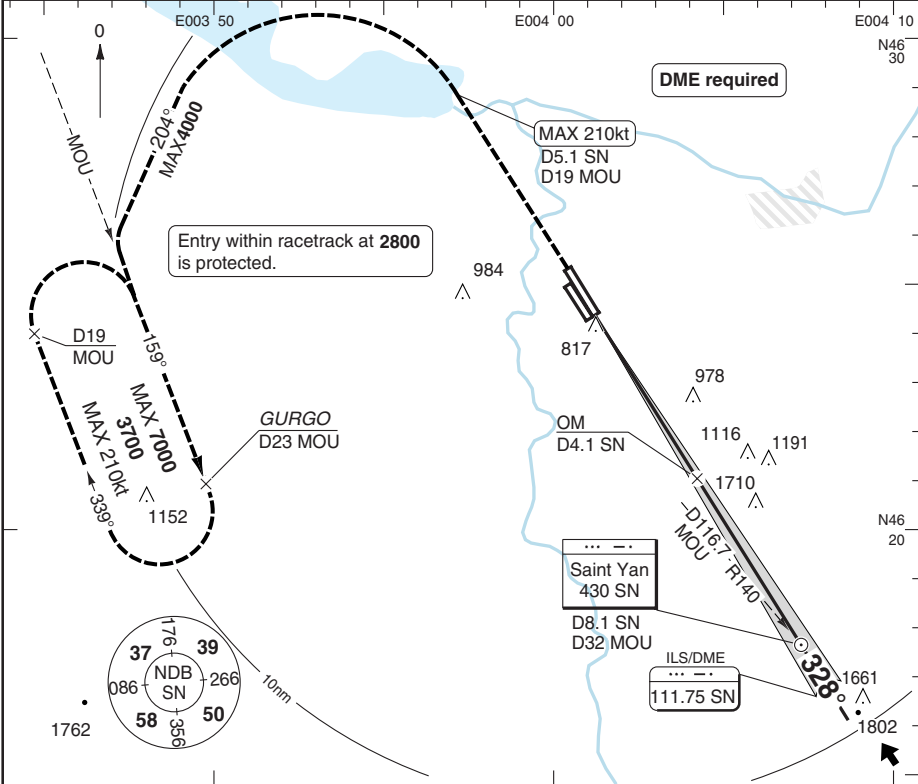
Change: New spec.

THIS CHART IS A PART OF NAVIGRAPH NDAC AND IS INTENDED FOR FLIGHT SIMULATION USE ONLY

ILS Z RWY 33R CAT A/B/C

Saint Yan APP 123.4 119.5	TWR 1 122.3	GND 121.8	ATIS 132.475	1 Absence of ATS: Obtain QNH from Clermont ATIS 136.4
---	------------------------------	---------------------	------------------------	--

ILS/DME 111.75 SN	FAT 328°	THR Elev 796	AD Elev 796	TL ATC	TA 5000
--------------------------	-----------------	---------------------	--------------------	---------------	----------------



MAPt D0.7 SN

Climb on 328° to D5.1 SN/ D19 MOU (MAX 210kt) turn left on 204°, intcp R159 MOU (MAX D19 MOU) to join GURGO racetrack at **2800**. Continue climbing to **3700** in HP. (Climb to **2100** prior to level acceleration.) DME SN reads D0.2 at THR

OM D4.1 SN

D8.1 SN NDB SN

328°

3700

3360

2110

1360

2400

MDA

TCH 52	0	1	2	3	4	5	6	7	8	9	nm
--------	---	---	---	---	---	---	---	---	---	---	----

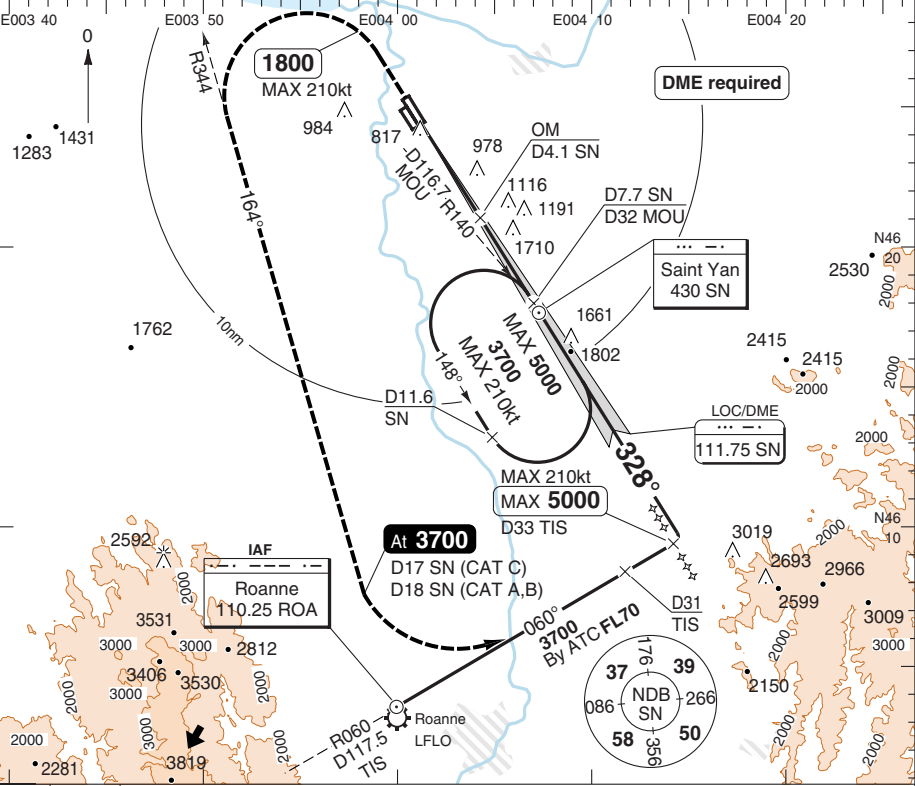
ACFT	ILS+DME	LOC+DME	Circling a	Circling a,b	DME SN	3.1° ALT	LDA 2030x45 6660x147ft P 3° (57)	
A	1000 (200) 550m	1230 (430) 1300m	1290 (490) 1.5km	1520 (730) 1.5km	9	3700		
B			1300 (500) 1.6km	1520 (730) 1.6km	7	3050		
C			1490 (690) 2.4km	1720 (930) 2.4km	6	2730		
D	NA	NA	NA	NA	5	2400		
GS	80	100	120	140	160	4		2080
ROD 3.1°	440	550	650	760	870	3		1760
FAF-MAPt	5:33	4:26	3:42	3:10	2:46	2		1430
						1.4	1230	

Change: New spec.

LOC X RWY 33R CAT A/B/C

Saint Yan APP 123.4 119.5	TWR 1 122.3	GND 121.8	ATIS 132.475	1 Absence of ATS: Obtain QNH from Clermont ATIS 136.4
---	------------------------------	---------------------	------------------------	--

LOC/DME 111.75 SN	FAT 328°	THR Elev 796	AD Elev 796	TL ATC	TA 5000
--------------------------	-----------------	---------------------	--------------------	---------------	----------------



MAPt D0.7 SN

Climb on 328° to **1800** (MAX 210kt) turn left to **3700** to intcp 164°/ R344 **ROA**.
At D17 **SN** (CAT C)/D18 **SN** (CAT A,B) turn left to intcp R060 **ROA** and follow ATC instructions.
Do not turn before MAPt.
(Climb to **2700** prior to level acceleration.)
DME SN reads D0.2 at THR

NO GP

OM D4.1 SN 3700
D7.7 SN D32 MOU 2110
D11.6 SN 2400

328° 148° 3°

See Chart

MDA 1360

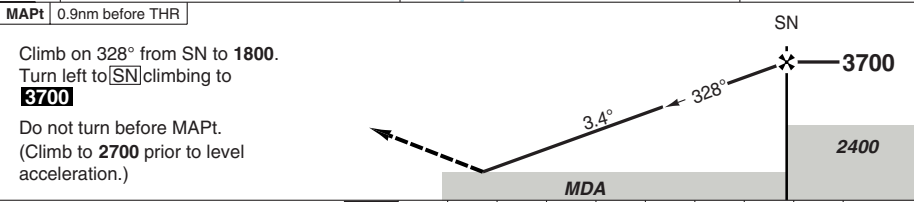
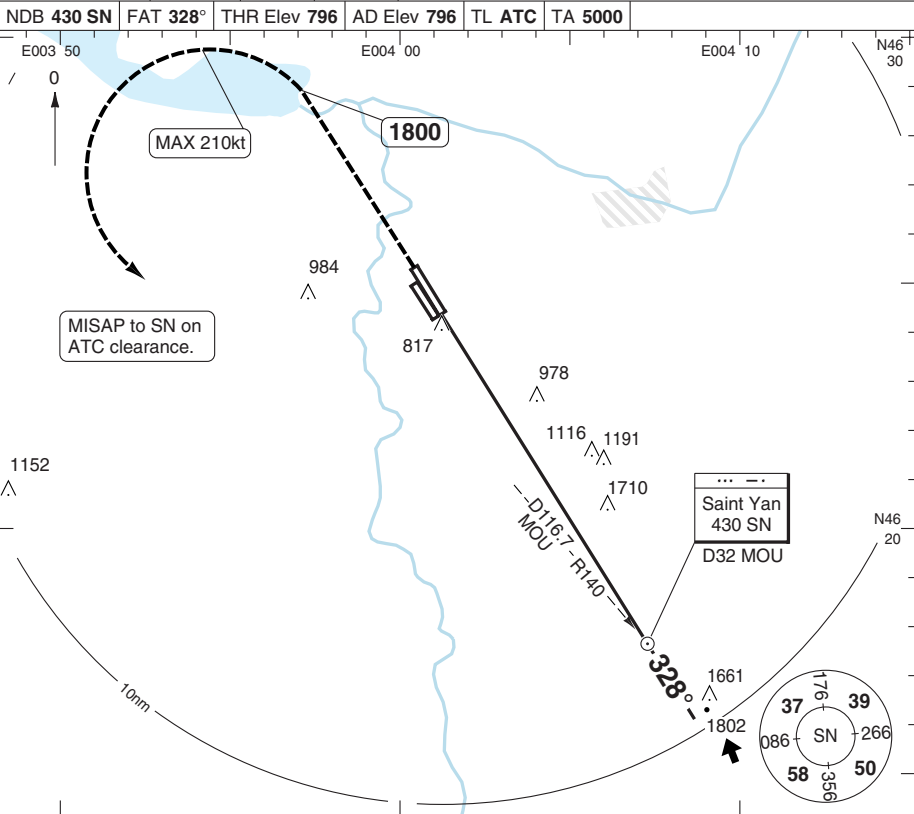
ACFT	LOC+DME	Circling ^a	Circling ^{a,b}	DME SN	3.1° ALT	LDA 2030x45 6660x147ft P 3° (57)	
A	1230 (430) 1300m	1290 (490) 1.5km	1520 (730) 1.5km	7.7	3280		
B		1300 (500) 1.6km	1520 (730) 1.6km	7	3060		
C		1490 (690) 2.4km	1720 (930) 2.4km	6	2730		
D	NA	NA	NA	5	2410		
				4	2080		
				3	1760		
				2	1430		
GS	80	100	120	140	160	1.4	1230
ROD 3.1°	440	550	650	760	870		

^a Prohibited East of RWY, except by ATC clearance.
^b When TWR CLSD, Day OPS only.

Change: New spec.

NDB Y RWY 33R CAT A/B/C

Saint Yan APP 123.4 119.5	TWR 1 122.3	GND 121.8	ATIS 132.475	1 Absence of ATS: Obtain QNH from Clermont ATIS 136.4
NDB 430 SN		FAT 328°	THR Elev 796	AD Elev 796
TL ATC		TA 5000		



ACFT	NDB	Circling ^a	Circling ^{a b}	GS	80	100	120	140	160	LDA 2030x45 6660x147ft P 3° (57)
A	1530 (740)	1530 (740) 1.5km	1730 (930) 1.5km	FAF +20s	3550	3510	3470	3430	3390	
B	1500m	1530 (740) 1.6km	1730 (930) 1.6km	+40s	3390	3300	3220	3140	3060	
C	1530 (740) 2400m	1600 (800) 2.4km	1830 (1030) 2.4km	+60s	3220	3100	2980	2860	2740	
D	NA	NA	NA	FAF- 1530	4:30	3:36	3:00	2:34	2:15	
				FAF-MAPt	5:15	4:11	3:30	3:00	2:37	

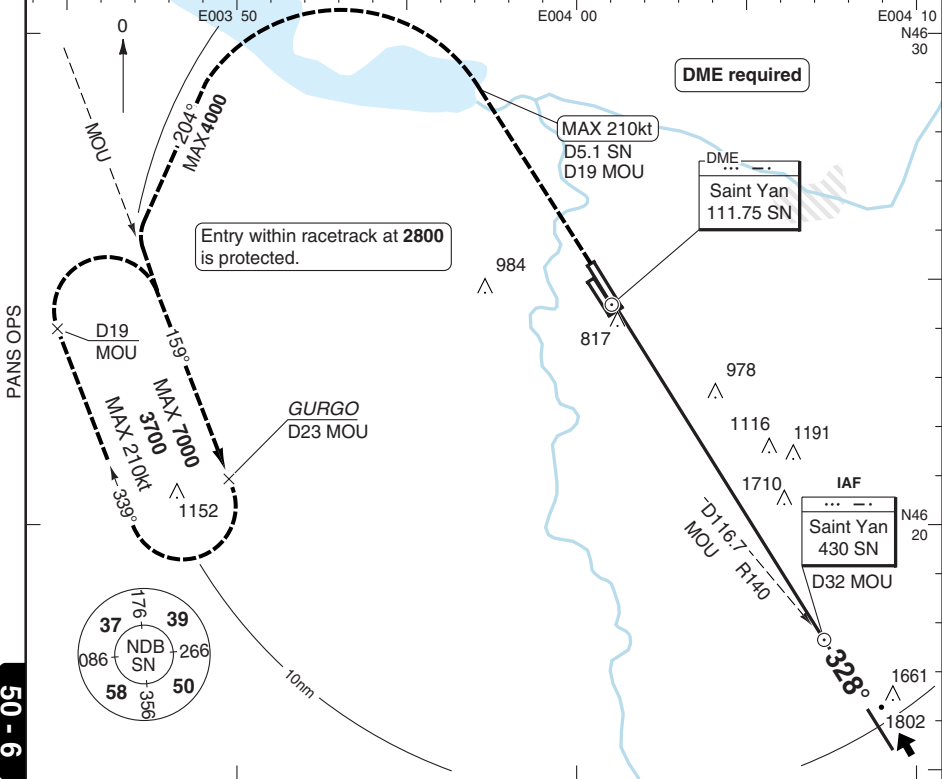
- ^a Prohibited East of RWY, except ATC clearance.
- ^b When TWR CLSD, Day OPS only.

Change: New spec.

NDB Z RWY 33R CAT A/B/C

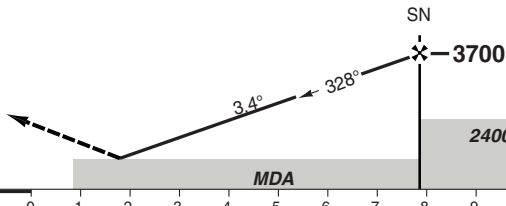
Saint Yan APP 123.4 119.5	TWR 1 122.3	GND 121.8	ATIS 132.475	1 Absence of ATS: Obtain QNH from Clermont ATIS 136.4
---	------------------------------	---------------------	------------------------	--

NDB 430 SN	FAT 328°	THR Elev 796	AD Elev 796	TL ATC	TA 5000
-------------------	-----------------	---------------------	--------------------	---------------	----------------



MAPt 0.9nm before THR

Climb on 328° to D5.1 **SN**/ D19 **MOU** (MAX 210kt) turn left on 204°, intcp R159 **MOU** (MAX D19 **MOU**) to join GURGO racetrack at **2800**. Continue climbing to **3700** in HP. (Climb to **2100** prior to level acceleration.)



ACFT	NDB	Circling ^a	Circling ^{a,b}
A	1530 (740) 1500m	1530 (740) 1.5km	1730 (930) 1.5km
B		1530 (740) 1.6km	1730 (930) 1.6km
C	1530 (740) 2400m	1600 (800) 2.4km	1830 (1030) 2.4km
D	NA	NA	NA

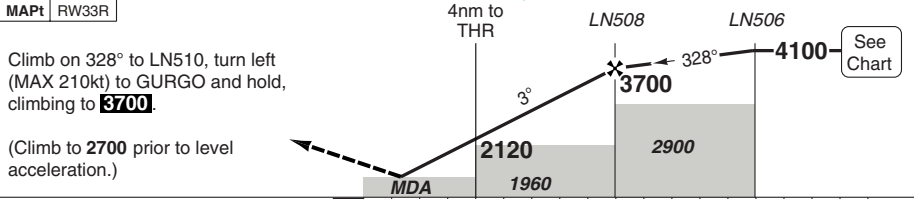
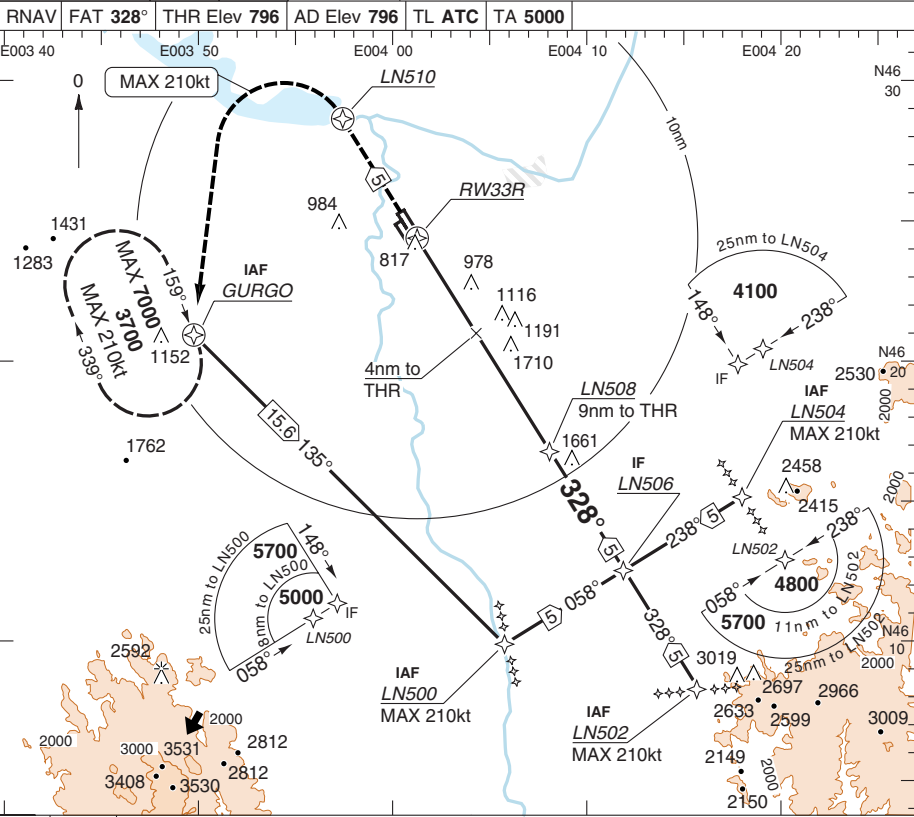
GS	80	100	120	140	160
ROD 3.4°	490	610	730	850	970
FAF +20s	3550	3510	3470	3430	3390
+40s	3390	3300	3220	3140	3060
+60s	3220	3100	2980	2860	2740
FAF- 1530	4:30	3:36	3:00	2:34	2:15
FAF-MAPT	5:15	4:11	3:30	3:00	2:37

LDA 2030x45
6660x147ft
P 3° (57)

^a Prohibited East of RWY, except ATC clearance.
^b When TWR CLSD, Day OPS only.

RNAV (GNSS) RWY 33R CAT A/B/C

Saint Yan APP 123.4 119.5	TWR 122.3	GND 121.8	ATIS ① 132.475	① Absence of ATIS: Obtain QNH from Clermont ATIS 136.4
RNAV	FAT 328°	THR Elev 796	AD Elev 796	TL ATC
TA 5000				



MAPt RW33R

Climb on 328° to LN510, turn left (MAX 210kt) to GURGO and hold, climbing to **3700**.
 (Climb to 2700 prior to level acceleration.)

ACFT	LNAV	Circling ^a	Circling ^{a,b}	THR 3.0° ALT	LDA 2030x45 6660x147ft P 3° (57)			
A	1250 (460) 1400m	1290 (490) 1.5km	1520 (720) 1.5km	10.2				
B		1300 (500) 1.6km	1530 (730) 1.6km	8				
C	1520 (730) 2.4km	1760 (960) 2.4km	7	6				
D	NA	NA	NA	5				
GS	80	100	120	140		160	4	2120
ROD 3.0°	430	540	640	750		850	3	1810
FAF-MAPt	6:45	5:23	4:30	3:51	3:22	1.3	1250	

© Navtech - ifin08iap00

EU OPS

^a Prohibited East of RWY.
^b When TWR CLSD, Day OPS only.

Change: New spec.