

## Airport information:

Country: France

City: BERGERAC

Coordinates: N 44° 49.5', E000 31.2

Elevation: 171

Customs: Customs PPR 24HR

Fuel: 100LL, Jet A1

RFF: CAT 7 06-16, CAT 5 16-19, CAT 1 outside these hours

hours: ATS 0700-2100

## Runways:

Runway 10

Takeoff length: 2145, Landing length: 1995

Runway 28

Takeoff length: 2205, Landing length: 1960

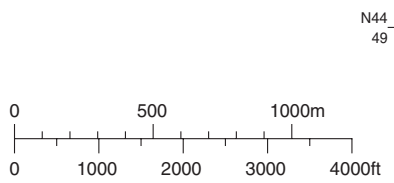
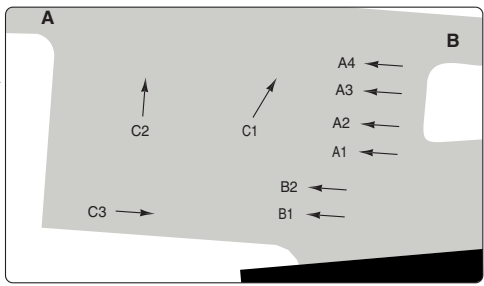
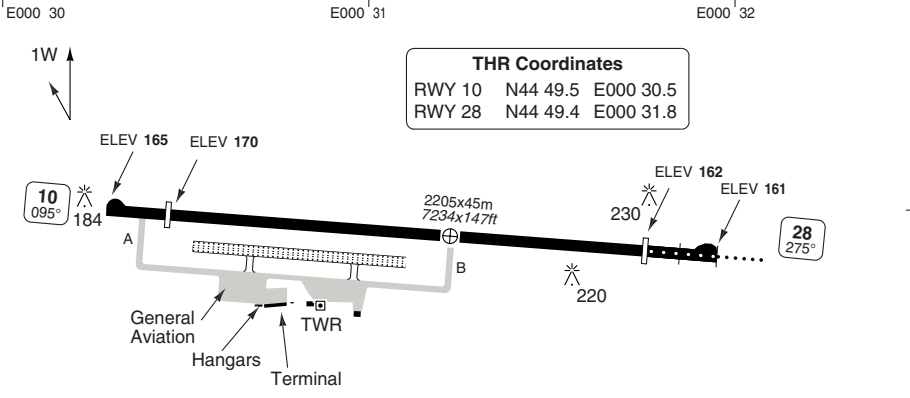
# AERODROME

Roumaniere **BERGERAC**

10 - 1

Bergerac TWR <b>119.8</b>	ATIS <b>127.475</b>
------------------------------	------------------------

AD Elev 171	ARP: N44 49.5 E000 31.2	RFF: ①	AD HR: 06-20 and HS PPR H24
-------------	-------------------------	--------	-----------------------------



RWY	Slope	TORA m/ft	LDA m/ft	ALS	REDL	Additional
10	0	2145 / 7037	1935 / 6348	-	H ③	P 3° (58)
28	0	2205 / 7234	1960 / 6430	H-E ②	H ③	P 3° (51)

① CAT 7 06-16, CAT 5 16-19, CAT 1 Outside these HR. ② 420m. ③ White.

EU OPS		TAKE OFF MINIMA			
RWY	Facilities	RVR			
		A	B	C	D
10/28	RCL (day only) or RCL + REDL NIL (day only)	400m 500m			

### GENERAL INFORMATION

- PARKING**  
Stands A1-A4, B1, B2:  
ACFT MAX wingspan 12m/39ft.  
Stands C1-C3:  
ACFT MAX wingspan 40m/131ft.
- SPEED**  
MAX 250kt below FL100.
- DE-ICING**  
De-icing avbl 06-16.
- TWY RESTRICTION**  
TWY A, B width 15m/49ft
- OMNIDIRECTIONAL DEPARTURE PROCEDURE**  
RWY 10  
Climb on 095° to 670ft until MNM climb gradient 4%, then direct route climbing to enroute safety ALT.  
RWY 28  
Climb on 275° to 970ft until MNM climb gradient 3.7%, then direct route climbing to enroute safety ALT.

© Navtech - lfbe01laorg0

Reverse side blank

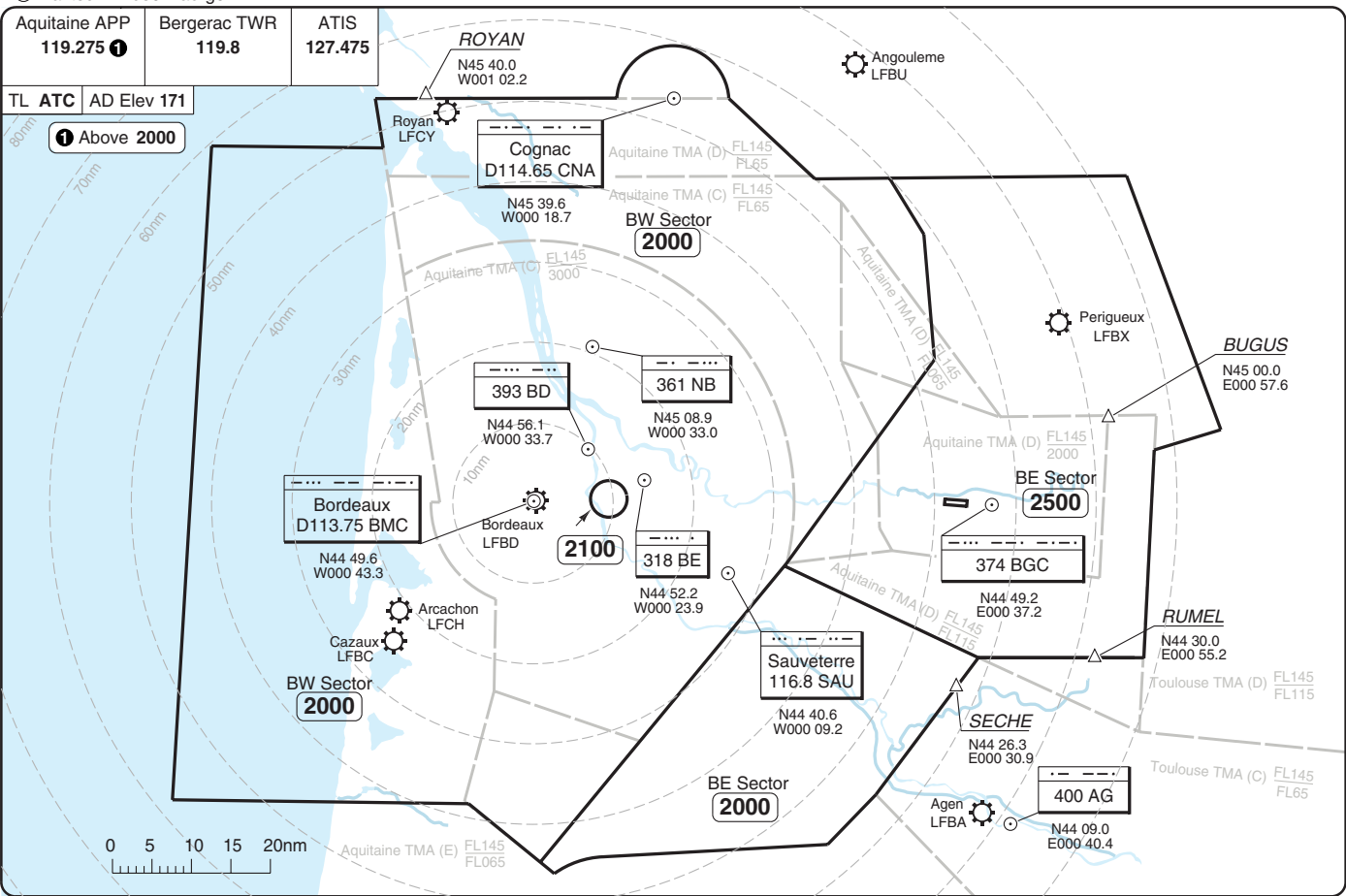
Change: General 5.

© Navtech - lfbe01vaorg0

Aquitaine APP 119.275 <b>1</b>	Bergerac TWR 119.8	ATIS 127.475
-----------------------------------	-----------------------	-----------------

TL ATC	AD Elev 171
--------	-------------

**1** Above 2000



RADAR Minimum Altitudes

20 - 1 | 05 OCT 11

Roumaniere BERGERAC

France - LFBE / EGC

THIS CHART IS A PART OF NAVIGRAPH NDAC AND IS INTENDED FOR FLIGHT SIMULATION USE ONLY

Change: INT.

Reverse side blank

20 - 1

Bergerac TWR **119.8**   
 Aquitaine APP **119.275**  
 Bergerac ATIS **127.475**

TA 5000 AD Elev 171

Above 2000

CAT A/B/C only

LIBRU

**MAX FL140**

N44 53.4  
W000 11.4

D113.75 R081  
BMC

ACFT destination LFBD

Sauveterre  
116.8 SAU

N44 40.6  
W000 09.2

R166A  
Gironde  
800 GND - 2000 GND  
Exc HOL.  
TUE, WED: 0830-1000 AND  
CS+30-2359  
THU: CS+30-2359  
FRI: 0830-1000  
NOTAM.

Limoges  
D114.5 LMG

N45 49.0  
E001 01.5

LERGI

N45 00.0  
E000 30.0

Sainte Foy La Grande  
LFDF

SAU 4E

680

374 BGC

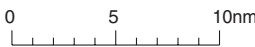
N44 49.2  
E000 37.2

LACOU 4E

680

25

BGC



SID	MNM Climb	Routeing	Altitudes
LACOU 4E	5.3%	Climb on 095° - BGC - turn right - 159° from BGC - LACOU.	
LIBRU 4E	4%	Climb on 095° - at 680 turn left - 251° - intop 291° from BGC - 261°/R081 BMC - LIBRU.	LIBRU MAX <b>FL140</b>
LMG 4E	8%	Climb on 095° - at 680 turn left - intop 336° from BGC - LERGI - 025°/R205 LMG - LMG.	
SAU 4E	4%	Climb on 095° - at 680 turn right - SAU.	
VELIN 4E		Climb on 095° - at 680 turn left - 251° - intop 297° from BGC - VELIN.	

Toulouse TMA (D)  
FL145  
FL115

LACOU  
N44 17.8  
E000 54.3

R004  
D114.8  
AGN

Scale distorted

SID Rwy 10

30 - 1 | 05 OCT 11

Roumaniere BERGERAC

France - LFBE / EGC

Change: SID designators, tracks, MNM Climb  
 THIS CHART IS A PART OF NAVIGRAPH NDAC AND IS INTENDED FOR FLIGHT SIMULATION USE ONLY

Bergerac TWR 119.8 <b>1</b>	Aquitaine APP 119.275	Bergerac ATIS 127.475
--------------------------------	--------------------------	--------------------------

TA 5000 AD Elev 171

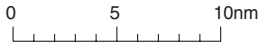
CAT A/B/C only

**1** Above 2000

LIBRU  
**MAX FL140**  
N44 53.4  
W000 11.4

D113.75  
BMC

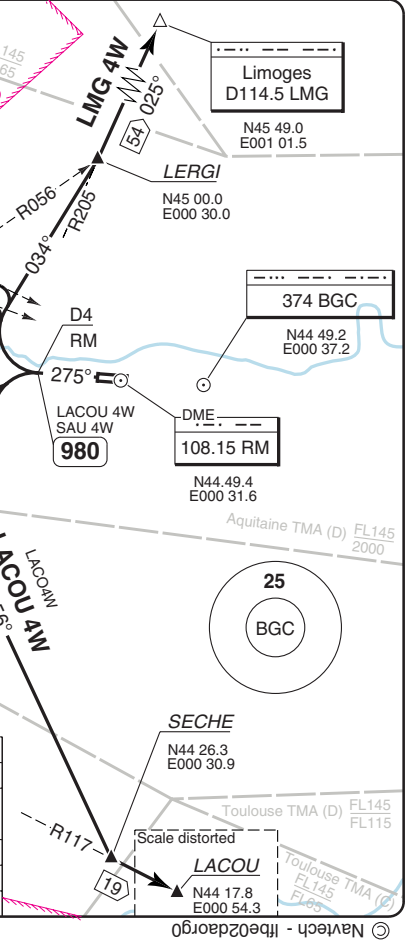
**2** ACFT destination LFBD



Sauveterre  
116.8 SAU  
N44 40.6  
W000 09.2

SID	MNM Climb	Routeing	Altitudes
LACOU 4W	6.5%	Climb on 275° - at <b>980</b> turn left - 201° - 156°/R336 AGN - SECHE - LACOU.	
LIBRU 4W <b>2</b>	6.2%	Climb on 275° - at D4 RM turn right - intcp 291° from BGC - 261°/R081 BMC - LIBRU.	LIBRU MAX <b>FL140</b>
LMG 4W	7.2%	Climb on 275° - at D4 RM turn right - 034° - LERGI - 025°/R205 LMG - LMG.	
SAU 4W	6.7%	Climb on 275° - at <b>980</b> turn left - 251°/R071 SAU - SAU.	
VELIN 4W	5%	Climb on 275° - at D4 RM turn right - 342° - intcp 297° from BGC - VELIN.	

**30 - 2**

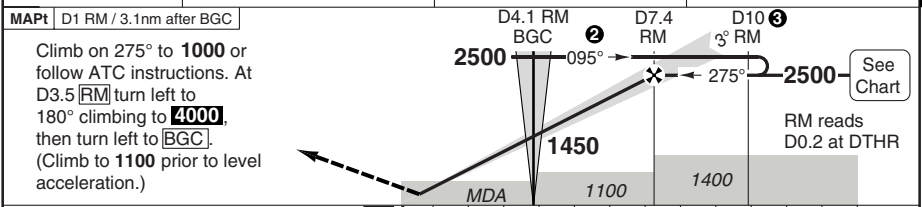
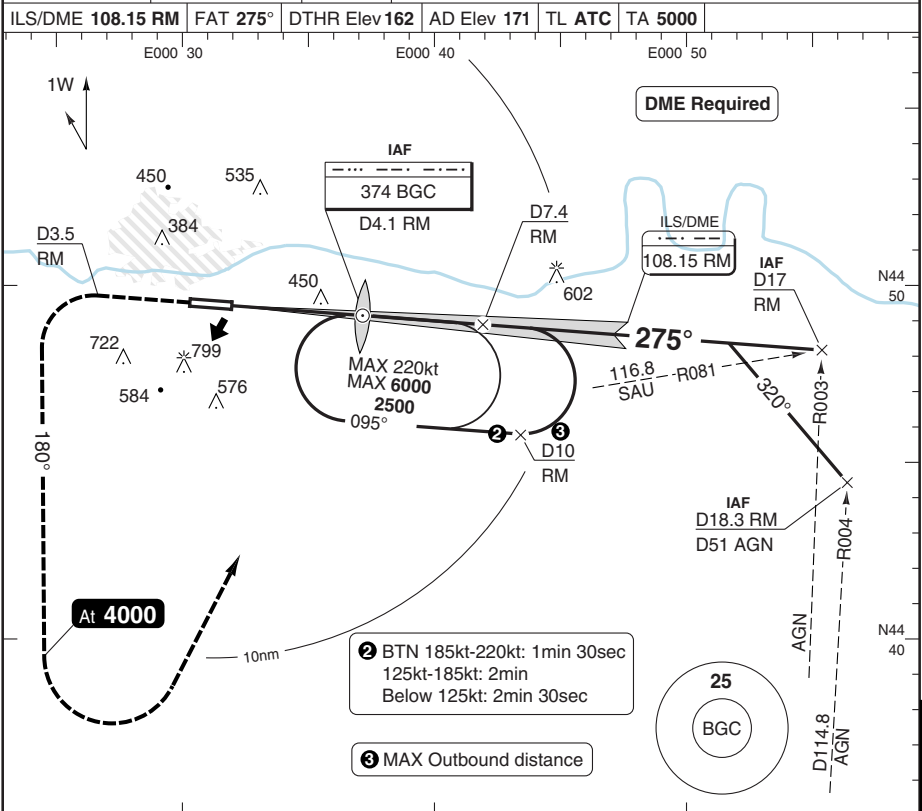




ILS RWY 28 CAT A/B/C

Roumaniere BERGERAC

Aquitaine APP 119.275 ①	Bergerac TWR 119.8	ATIS 127.475	① Above 2000
ILS/DME 108.15 RM	FAT 275°	DTHR Elev 162	AD Elev 171
TL ATC	TA 5000		



TCH 48

ACFT	ILS+DME	LOC+DME	Circling a	Circling a/b	DME RM	3.0° ALT	LDA 1960x45 6430x147ft P 3° (51)	
A	370 (200) 750m	700 (540) 1500m	1100 (940) 1.5km	1340 (1180) 1.5km	7.4	2500		
B			1100 (940) 1.6km	1340 (1180) 1.6km	7	2380		
C	700 (540) 2000m	1200 (1040) 2.4km	1440 (1280) 2.4km	NA	6	2060		
D					5	1740		
GS	80	100	120	140	160	4		1420
ROD 3.0°	430	540	640	750	850	3		1110
BGC-MAPT	2:19	1:52	1:33	1:19	1:10	2		790
						1.7	700	

Note: GP only usable for ACFT equipped ILS 50KHz.

① Prohibited North of AD.  
② When TWR CLSD: Day OPS only.

© Navtech - lfbe01iaip00

50 - 1

IALS

Change: New spec.

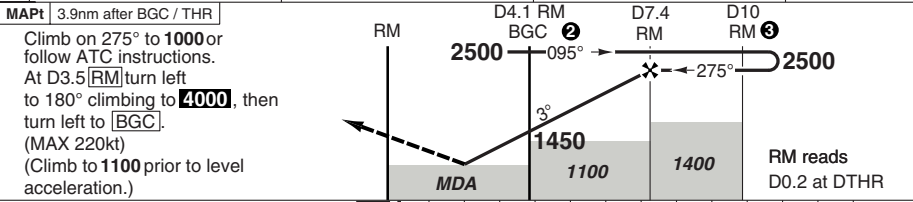
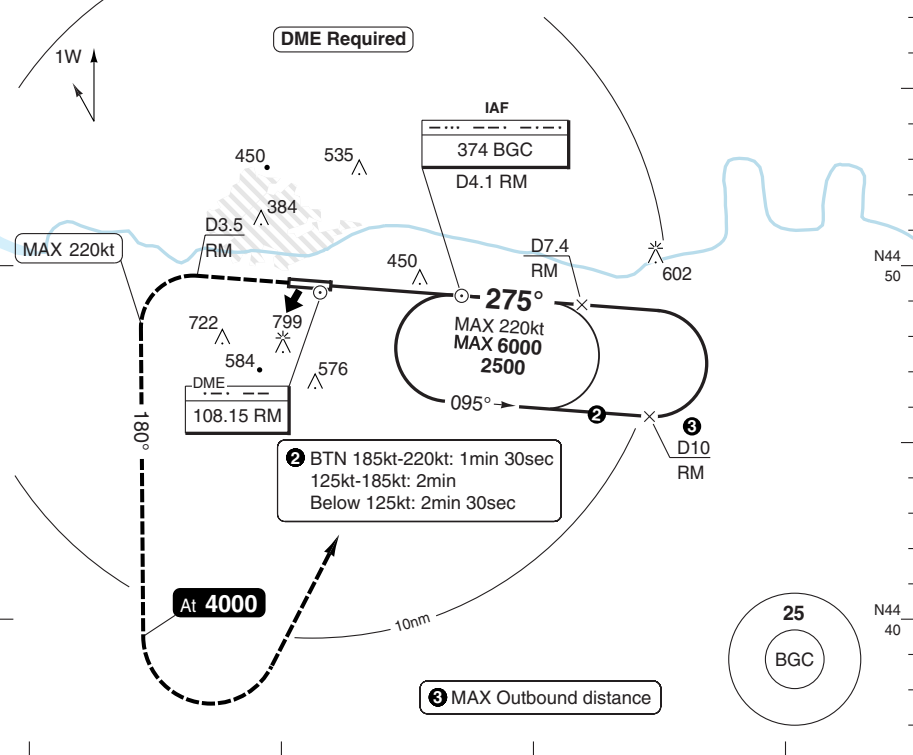
**THIS CHART IS A PART OF NAVIGRAPH NDAC AND IS INTENDED FOR FLIGHT SIMULATION USE ONLY**

# NDB Z RWY 28 CAT A/B/C

# Roumaniere BERGERAC

Aquitaine APP 119.275 ①	Bergerac TWR 119.8	ATIS 127.475	① Above 2000
----------------------------	-----------------------	-----------------	--------------

NDB 374 BGC	FAT 275°	DTHR Elev 162	AD Elev 171	TL ATC	TA 5000
-------------	----------	---------------	-------------	--------	---------



MAPt 3.9nm after BGC / THR						Climb on 275° to 1000 or follow ATC instructions.		DME 3.0°		LDA 1960x45 6430x147ft P 3° (51)
At D3.5 [RM] turn left to 180° climbing to 4000, then turn left to [BGC]. (MAX 220kt) (Climb to 1100 prior to level acceleration.)						RM reads D0.2 at DTHR		ALT		
ACFT	NDB+DME	Circling a		Circling a b		RM		ALT		IALS 420
A	840 (670) 1500m	1100 (930) 1.5km	1340 (1170) 1.5km	7.4 2500		7 2380		6 2060		
B		1100 (930) 1.6km	1340 (1170) 1.6km	5 1740		4 1420		3 1110		
C	840 (670) 2400m	1200 (1030) 2.4km	1440 (1270) 2.4km	4 1420		3 1110		2.2 840		
D	NA	NA	NA							
GS	80 100 120 140 160									
ROD 3.0°	430 540 640 750 850									
BGC-MAPt	2:55 2:20 1:57 1:40 1:28									
						a Prohibited North of AD.				
						b When TWR CLSD: Day OPS only.				

50 - 2

© Navitech - lfbe02iaip00 EU OPS

Change: New spec.

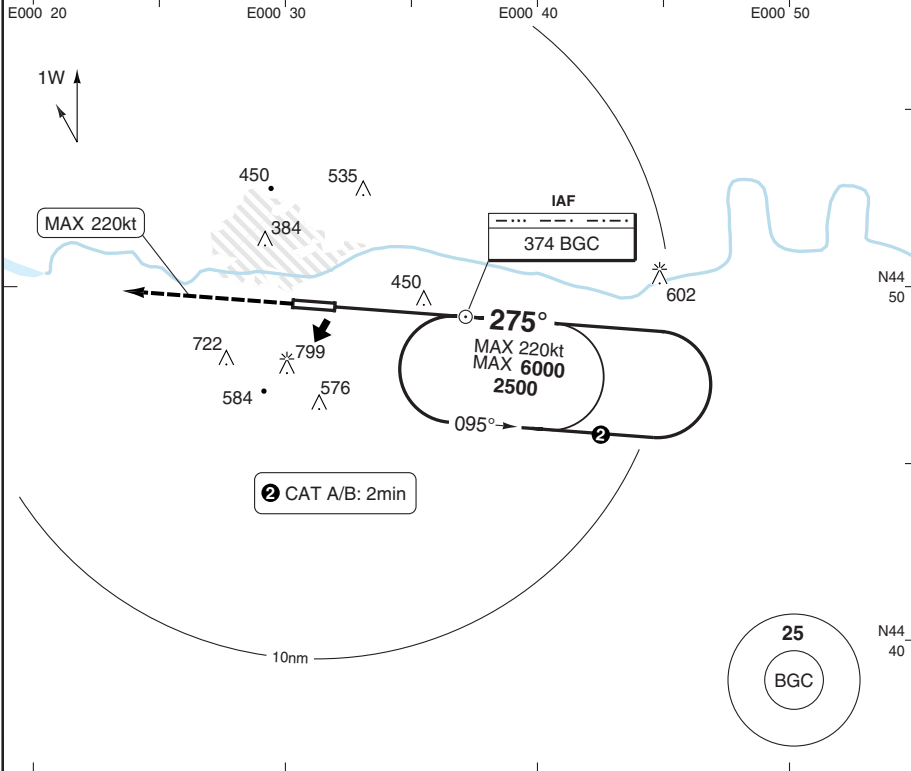
**THIS CHART IS A PART OF NAVIGRAPH NDAC AND IS INTENDED FOR FLIGHT SIMULATION USE ONLY**

# NDB Y RWY 28 CAT A/B/C

# Roumaniere BERGERAC

Aquitaine APP 119.275 ①	Bergerac TWR 119.8	ATIS 127.475	① Above 2000
----------------------------	-----------------------	-----------------	--------------

NDB 374 BGC	FAT 275°	DTHR Elev 162	AD Elev 171	TL ATC	TA 5000
-------------	----------	---------------	-------------	--------	---------



**MAPt** 3.9nm after BGC / THR

Climb on 275° from BGC to 1000 or follow ATC instructions.  
Continue climbing to **4000** and follow ATC instructions. (MAX 220kt)  
No turn before MAPt.  
(Climb to 1100 prior to level acceleration.)

ACFT	NDB	Circling <b>a</b>	Circling <b>a</b> <b>b</b>	GS	80	100	120	140	160	LDA 1960x45 6430x147ft P 3° (51)
A	840 (670) 1500m	1100 (930) 1.5km	1340 (1170) 1.5km	ROD 3.0°	430	530	640	750	850	
B		1100 (930) 1.6km	1340 (1170) 1.6km	BGC +20s	1310	1280	1240	1210	1170	
C	840 (670) 2400m	1200 (1030) 2.4km	1440 (1270) 2.4km	+40s	1170	1100	1030	960	890	
D	NA	NA	NA	+60s	1030	920	-	-	-	
				BGC- 840	1:26	1:09	0:58	0:49	0:43	
				BGC-MAPt	2:55	2:20	1:57	1:40	1:28	

- a** Prohibited North of AD.
- b** When TWR CLSD: Day OPS only.

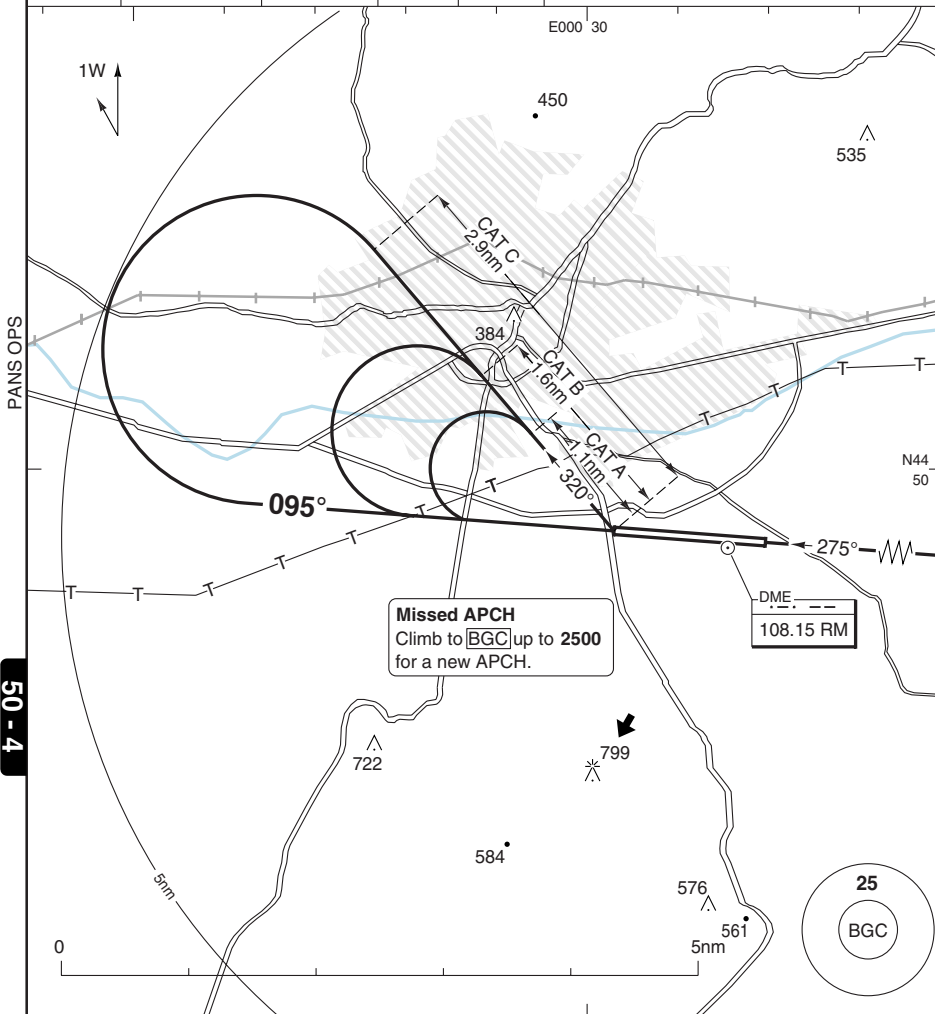
© Navtech - lfbe03iaip00

# CIRCLING RWY 10 VPT CAT A/B/C

# Roumaniere BERGERAC

Aquitaine APP 119.275 **1** Bergerac TWR 119.8 ATIS 127.475 **1** Above 2000

FAT 095° DTNR Elev 170 AD Elev 171 TL ATC TA 5000



50 - 4

© Navtech - lfbe04iaip00 EU OPS

ACFT	Circling
A	840 (670) 1.5km
B	840 (670) 1.6km
C	840 (670) 2.4km
D	NA

LDA 1935x45  
6348x147ft  
P 3° (58)



MALS

Change: New spec.