

LFAQ

Airport information:

Country: France

City: ALBERT

Coordinates: N 49° 58.2', E002 41.6

Elevation: 363

Customs: Nil

Fuel: Jet A1

RFF: CAT 2

hours: Mon-Fri 0600-1700 (W +1)

Runways:

Runway 09

Takeoff length: 2200, Landing length: 2200

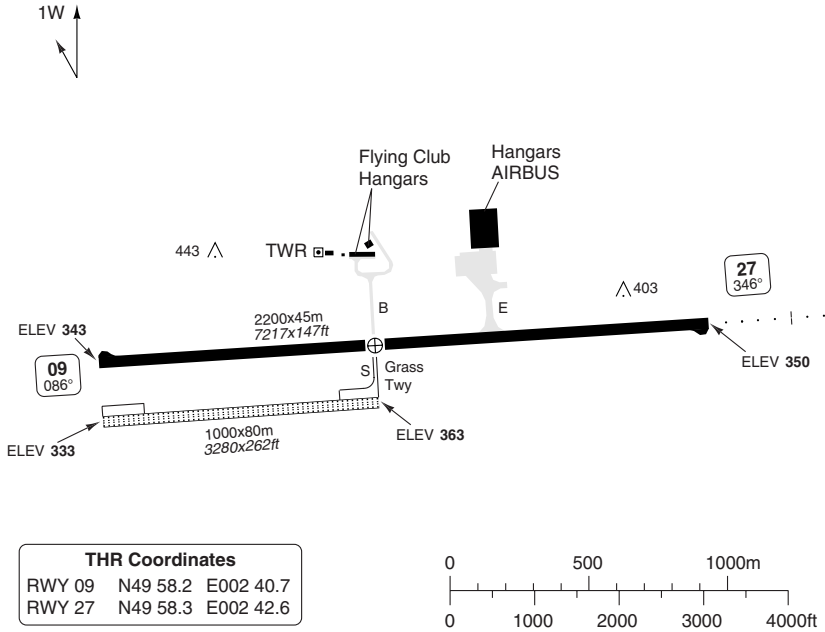
Runway 27

Takeoff length: 2200, Landing length: 2200

AERODROME

Albert TWR 119.65	Lille APP 134.825	ATIS 119.325	① Mon - Fri except Hol: 0600 - 1700
-----------------------------	-----------------------------	------------------------	-------------------------------------

AD Elev 363	ARP: N49 58.2 E002 41.6	RF: (CAT 1 outside AD HR), CAT 5 O/R	AD HR: ①
--------------------	-------------------------	--------------------------------------	----------



RWY	Slope	TORA m/ft	LDA m/ft	ALS	REDL	Additional
09	+0.1	2200 / 7217	2200 / 7217	-	H	P3°(58), REIL
27	-0.1	2200 / 7217	2200 / 7217	H-E ②	H	P3°(59), REIL

② 420m

EU OPS

TAKE OFF MINIMA

RWY	Facilities	RVR	
		A B C	D
09/27	-	400m	400m
09/27(1)	-	800m	800m

(1)HN only.

GENERAL INFORMATION

OMNIDIRECTIONAL DEPARTURE PROC

Climb on runway heading up to **1000** then direct route climbing up to the enroute safety altitude.

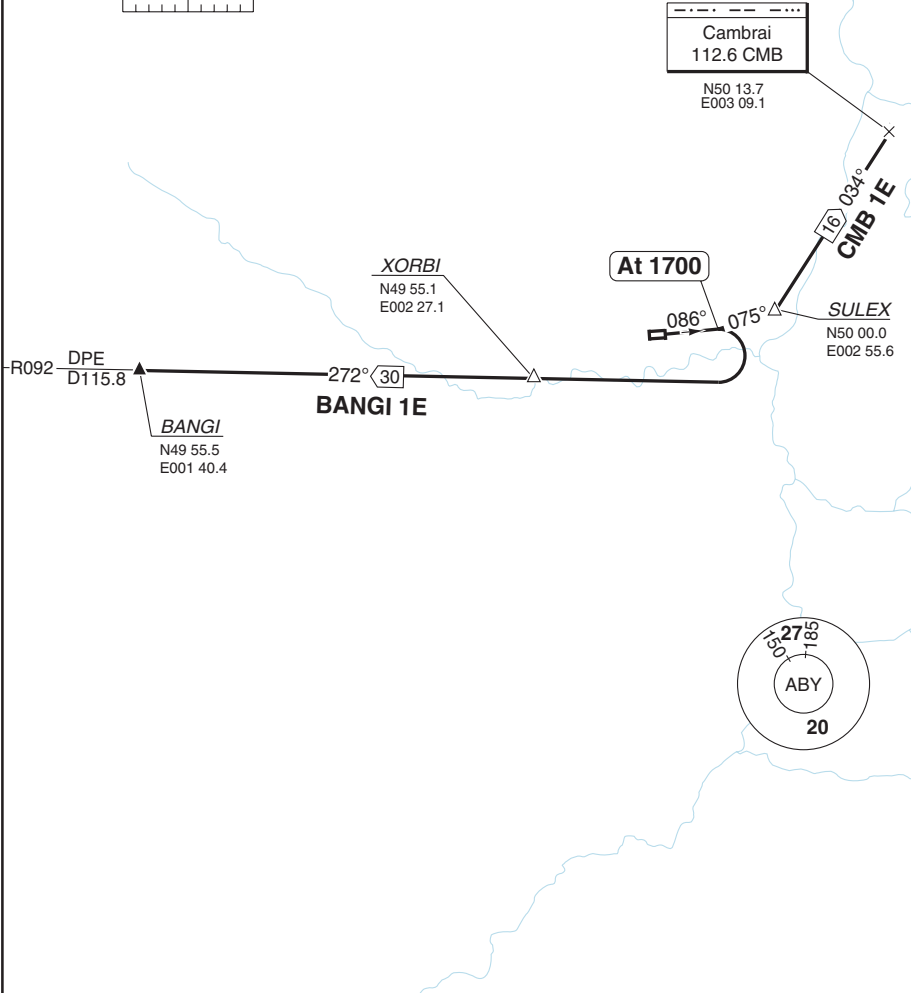
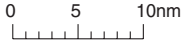
30 - 1 | 02 APR 09

France - LFAQ/-
Bray **ALBERT**

SID RWY 09

Albert TWR 119.650	Lille APP 126.475 134.825 (E) 120.275 (W)	ATIS 119.325
------------------------------	---	------------------------

TA 4000 | AD Elev 363



MNM CLIMB GRADIENT: 5.5%

SID	Routeing
CMB 1E	Climb on - Tr 086M - at 1700 - turn left Tr 075M - SULEX - 034°/R214 CMB - CMB at 1700
BANGI 1E	Climb on Tr 086M - 1700 turn right - 272°/R092 DPE - XORBI - BANGI.

© Navitech EAG - lfaq01daorg0

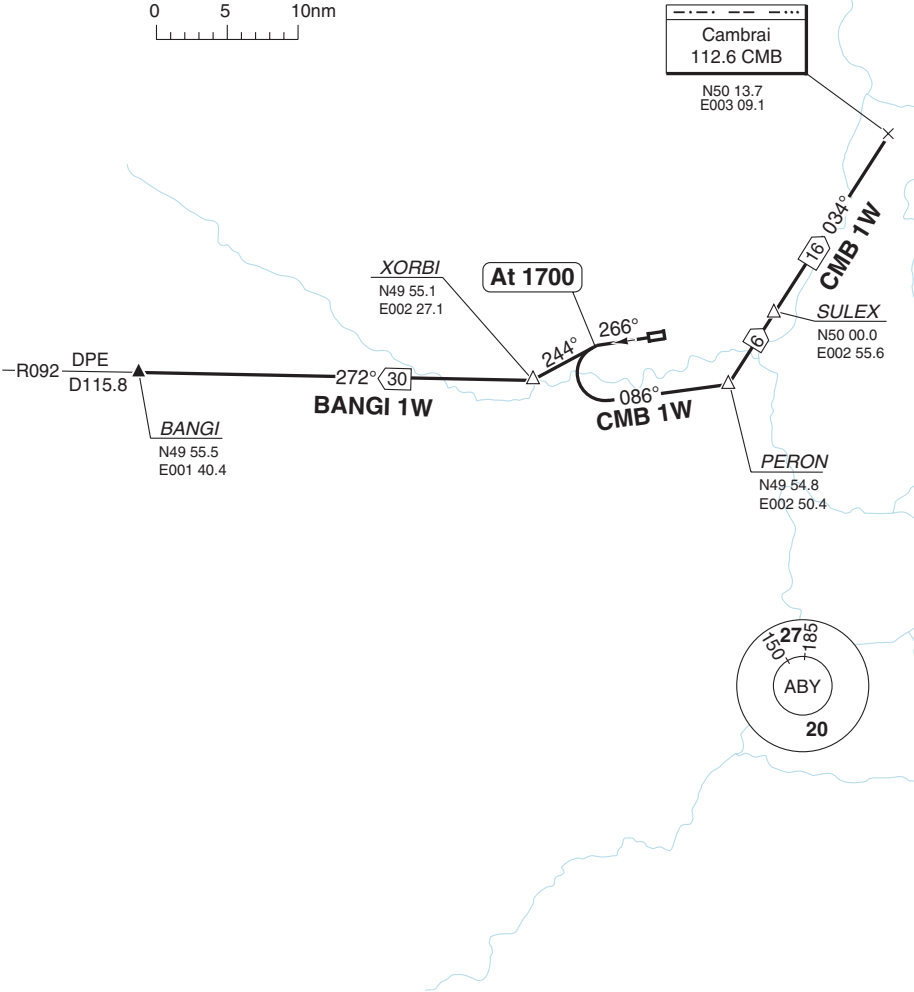
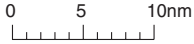
Change: New Aerodrome.

THIS CHART IS A PART OF NAVIGRAPH NDAC AND IS INTENDED FOR FLIGHT SIMULATION USE ONLY

SID RWY 27

Albert TWR 119.650	Lille APP 126.475 134.825 (E) 120.275 (W)	ATIS 119.325
------------------------------	---	------------------------

TA 4000 AD Elev 363



MNM CLIMB GRADIENT: 5.5%

SID	Routeing
CMB 1W	Climb on Tr 266M - at 1700 turn left - Tr 086M - PERON - 034°/R214 CMB - SULEX - CMB.
BANGI 1W	Climb on Tr 266M - at 1700 turn left - 244° - XORBI - 272°/R092 DPE - BANGI.

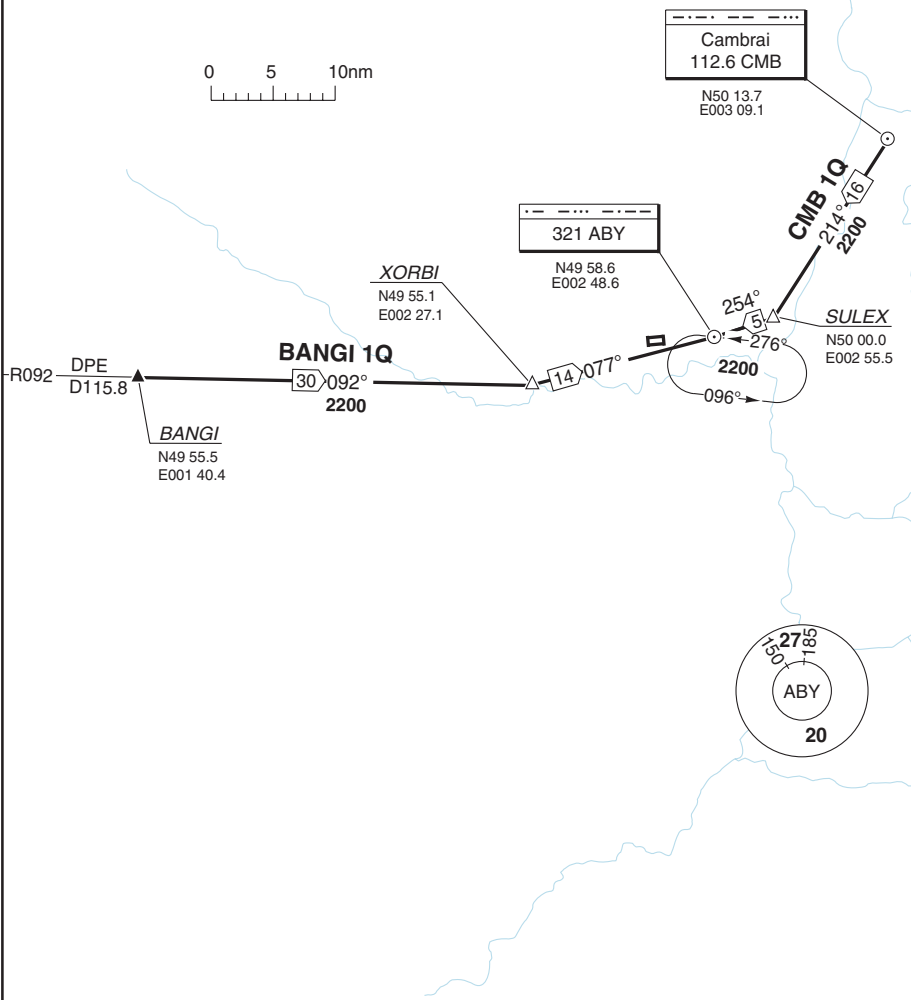
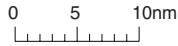
© Navitech EAG - lfaq02daorg0

Change: New Aerodrome.

THIS CHART IS A PART OF NAVIGRAPH NDAC AND IS INTENDED FOR FLIGHT SIMULATION USE ONLY

STAR

Lille APP 126.475 134.825 (E) 120.275 (W)	Albert TWR 119.650	Lille ATIS 119.325
TA 4000 AD Elev 363		



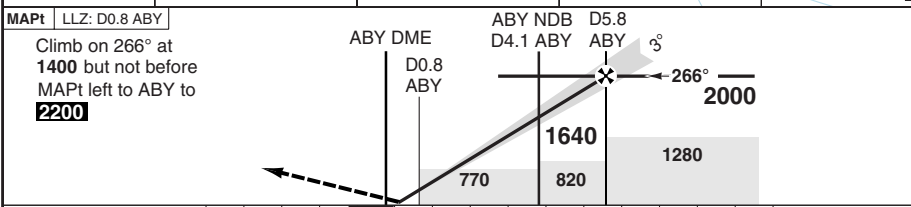
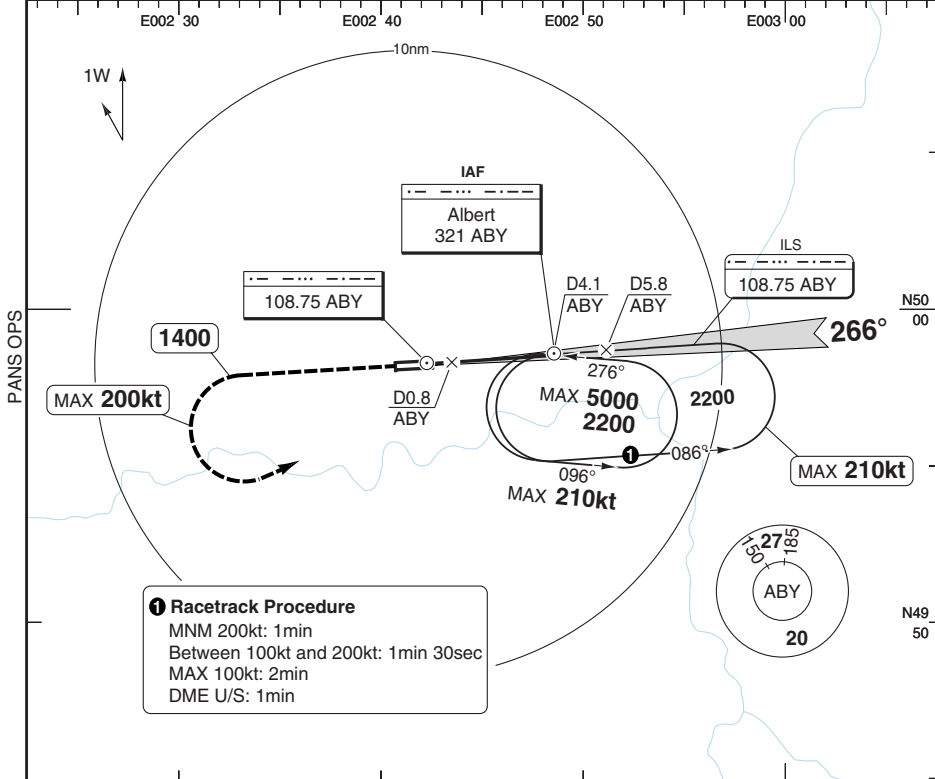
Change: New Aerodrome.

THIS CHART IS A PART OF NAVIGRAPH NDAC AND IS INTENDED FOR FLIGHT SIMULATION USE ONLY

ILS RWY 27

Lille APP 134.825	Albert TWR 119.65	Lille ATIS 119.325
-----------------------------	-----------------------------	------------------------------

ILS/DME 108.75 ABY	FAT 266°	THR Elev 350 13hPa	TL ATC	TA 4000
---------------------------	-----------------	---------------------------	---------------	----------------



MAPt LLZ: D0.8 ABY

ACFT	ILS	LLZ+DME	LLZ	Circling a	Circling a c	DME ABY	3.0° ALT	LDA 2200x45 7217x147ft P 3° (54)
	A/B	550 (200) 750m	770 (419) 1500m	770 (419) 1500m	870 (500) 1.6km b	1000 (630) 1.6km d	5 1940	
	C				970 (600) 2.4km	1100 (730) 2.4km	4 1630	
	D	560 (209) 750m	770 (419) 1600m	770 (419) 1600m	1070 (700) 3.6km	1100 (730) 3.6km	3 1310	
GS	80	100	120	140	160	a Prohibited N of RWY. c Cat A: 950 (580) 1.5km		
ROD 3.0°	430	540	640	750	860	b Cat A: 780 (410) 1.5km		
FAF-MAPt	Not Authorised					c When ATC closed, HJ only.		

© Navtech EAG - lfaq01.iap00

IALS

