

LERS

Airport information:

Country: Spain

City: REUS

Coordinates: N 41° 08.9', E001 10.0

Elevation: 233

Customs: Customs. PPR 48 HR for INTL traffic.

Fuel: 100LL, Jet A1

RFF: Winter: CAT 7

hours: Summer: 0400-2200 + 1 HR PPR. Winter: 0500-2300 + 1 HR PPR.

Runways:

Runway 07

Takeoff length: 2459, Landing length: 2190

Runway 25

Takeoff length: 2459, Landing length: 2459

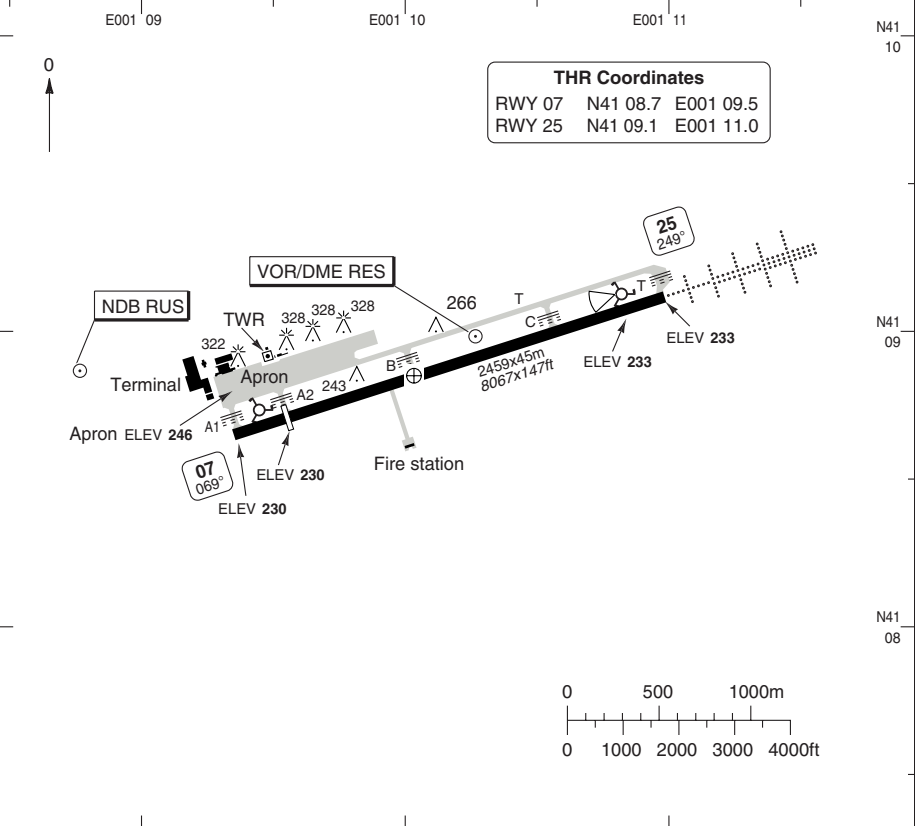
AERODROME

REUS

10 - 1

Reus GND 121.7	TWR 118.15		
-------------------	---------------	--	--

AD Elev 233	ARP: N41 08.8 E001 10.0	RFF: CAT 7	AD HR: 05 - 23 + 1HR PPR.
-------------	-------------------------	------------	---------------------------



RWY	Slope	TORA m/ft	LDA m/ft	ALS	REDL	Additional
07	0	2459 / 8067	2190 / 7185	-	H	P 3°/R (56)
25	0	2459 / 8067	2459 / 8067	H-C	H	P 3°/R (47)

EU OPS TAKE OFF MINIMA

RWY	Facilities	RVR		
		A B C	D	
07/25	RCL (day only) or RCL + REDL	LVTO	250 m	300 m
	RCL (day only) or RCL + REDL		400 m	400 m
	NIL (day only)		500 m	500 m

© Navitech - lers01laorg0

Change: New spec.

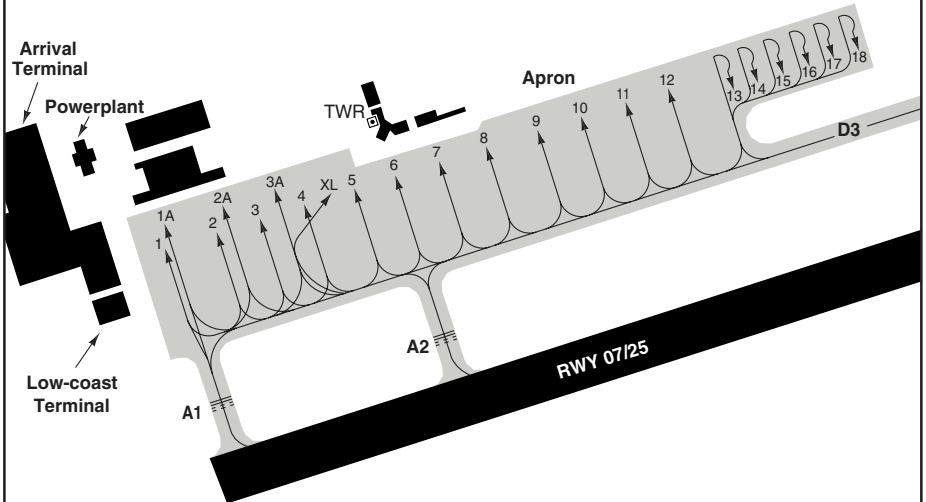
THIS CHART IS A PART OF NAVIGRAPH NDAC AND IS INTENDED FOR FLIGHT SIMULATION USE ONLY

AERODROME

10 - 2

Reus GND 121.7	TWR 118.15
-------------------	---------------

Parking position coordinates		
1, 1A, 2, 2A	N41 08.8	E001 09.3
3, 3A, 4, XL	N41 08.8	E001 09.4
5	N41 08.8	E001 09.4
6-8	N41 08.8	E001 09.5
9, 10	N41 08.9	E001 09.6
11-13	N41 08.9	E001 09.7
14-18	N41 10.0	E001 09.8



GENERAL INFORMATION

- TWY RESTRICTION**
TWY width 22m/72ft
- NAV RESTRICTION**
RES VOR unusable in following sectors:
R280 - R030 below 13000ft
R030 - R065 below 6000ft
R065 - R280 below 4000ft

- SPEED**
 - MAX 230kt in HLD at or below FL140.
MAX 250ft on SLP.
220ft when leaving IAF.
180kt - 170kt when intercepting final magnetic track to LLZ.
160kt when intercepting GP on FAP (FAF), maintain until 4nm from THR.
 - MAX 250kt at or below FL100.
- LOW VISIBILITY PROCEDURE**
Report RWY vacated and TWY used.

© Navitech - lers02laorg0

Change: New spec.

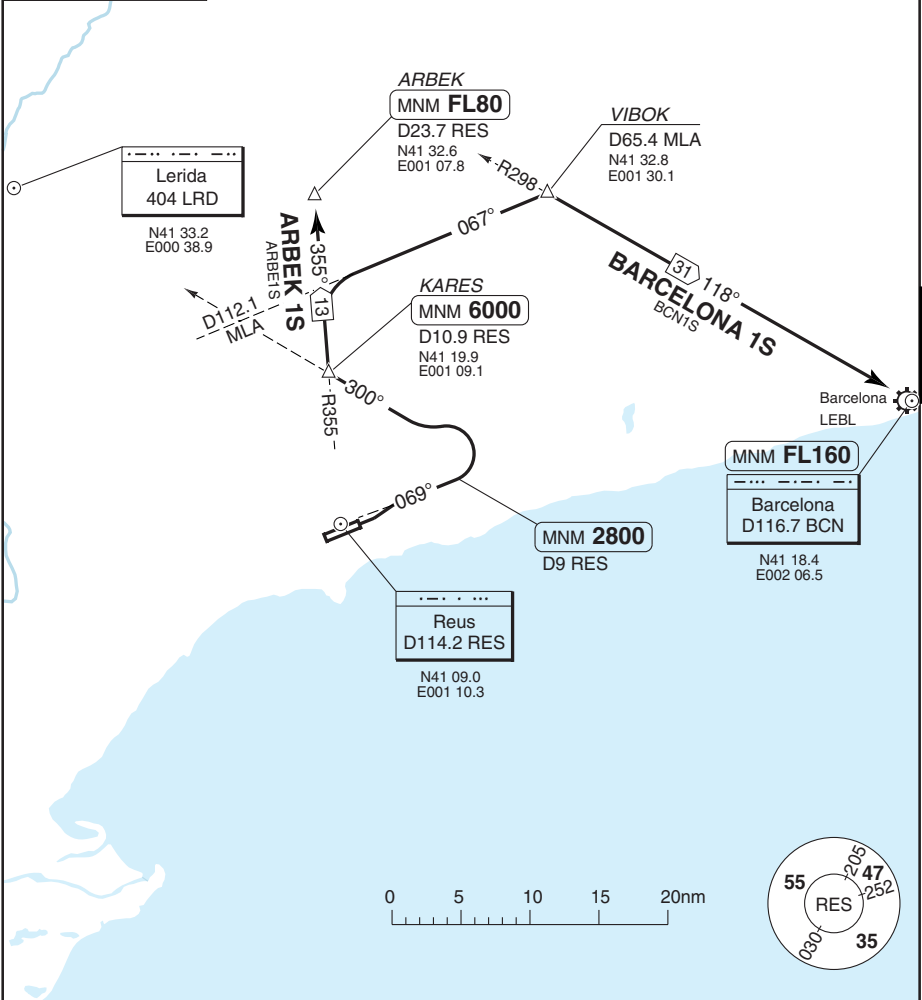
THIS CHART IS A PART OF NAVIGRAPH NDAC AND IS INTENDED FOR FLIGHT SIMULATION USE ONLY

SID RWY 07 Northeast

REUS

Reus GND 121.7	TWR 118.15	APP 118.15
-------------------	---------------	---------------

TA 6000 | AD Elev 233



SPEED: MAX 250kt at or below FL100.

MNM CLIMB GRADIENT: 4.5% upto 6000.

SID	Routing	Altitudes
ARBEK 1S	Climb on R069 RES - at D9 RES turn left - 300° to LRD - KARES - intop R355 RES - ARBEK.	D9 RES MNM 2800 KARES MNM 6000 ARBEK MNM FL80
BARCELONA 1S	Climb on R069 RES - at D9 RES turn left - 300° to LRD - KARES - turn right to intop R355 RES - R067 MLA - VIBOK - turn right to intop R298 BCN - BCN.	D9 RES MNM 2800 KARES MNM 6000 BCN MNM FL160

Change: New spec.

THIS CHART IS A PART OF NAVIGRAPH NDAC AND IS INTENDED FOR FLIGHT SIMULATION USE ONLY

SID RWY 07 East, South

REUS

Reus GND 121.7	TWR 118.15	APP 118.15
-------------------	---------------	---------------

TA 6000 AD Elev 233

Villafranca
D113.15 VLA
N41 20.6
E001 32.9

Sabadell
D112.0 SLL
N41 31.2
E002 06.6

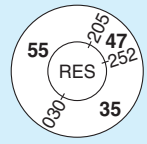
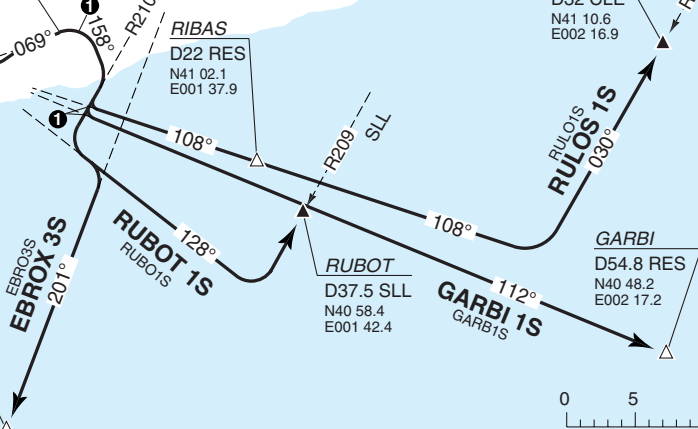
Barcelona
D116.7 BCN
N41 18.4
E002 06.5

MNM 2000
D7 RES

MAX 220kt in turn.

Reus
D114.2 RES
N41 09.0
E001 10.3

EBROX
D40.6 VLA
N40 42.5
E001 13.9



SPEED: MAX 250kt at or below FL100.

MNM CLIMB GRADIENT: 4.5% up to 2000.

ALT RESTRICTION: EBROX 3S, GARBI 1S, RULOS 1S: Maintain **4000** until D13 RES except ATC clearance.

RUBOT 1S: Maintain **4000** until D12 RES except ATC clearance.

SID	Routing	Altitudes
EBROX 3S	Climb on R069 RES - at D7 RES turn right (MAX 220kt) - HDG 158° - R210 VLA - R128 RES - R201 VLA - EBROX.	D7 RES MNM 2000
GARBI 1S	Climb on R069 RES - at D7 RES turn right (MAX 220kt) - HDG 158° - R210 VLA - turn left (MAX 220kt) to intcp R112 RES - GARBI.	
RUBOT 1S	Climb on R069 RES - at D7 RES turn right (MAX 220kt) - HDG 158° - R210 VLA - R128 RES - R209 SLL - RUBOT.	
RULOS 1S	Climb on R069 RES - at D7 RES turn right (MAX 220kt) - HDG 158° - R210 VLA - turn left (MAX 220kt) to intcp R108 RES - RIBAS - turn left on R210 CLE - RULOS.	

© Navitech - lers02daorg0

Change: New spec.

THIS CHART IS A PART OF NAVIGRAPH NDAC AND IS INTENDED FOR FLIGHT SIMULATION USE ONLY

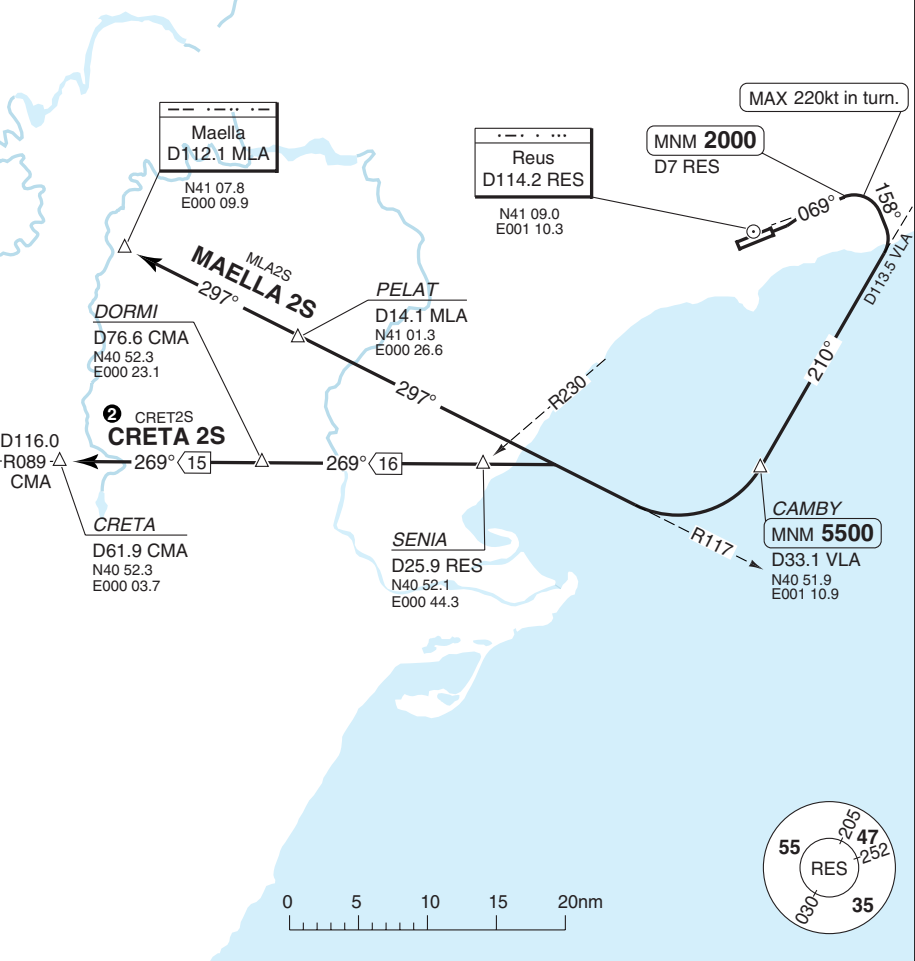
SID RWY 07 Southwest

REUS

Reus GND 121.7	TWR 118.15	APP 118.15
-------------------	---------------	---------------

TA 6000 AD Elev 233

② Possible weak signal from CMA below FL200.
RADAR Assistance available.



SPEED: MAX 250kt at or below FL100.

MNM CLIMB GRADIENT: 4.5% upto 2000.

ALT RESTRICTION: Maintain **4000** until D23 VLA except ATC clearance.

SID	Routeing	Altitudes
CRETA 2S ②	Climb on R069 RES - at D7 RES turn right (MAX 220kt) - HDG 158° - R210 VLA - CAMBY - R117 MLA - R089 CMA - SENIA - DORMI - CRET2S.	D7 RES MNM 2000 CAMBY MNM 5500
MAELLA 2S	Climb on R069 RES - at D7 RES turn right (MAX 220kt) - HDG 158° - R210 VLA - CAMBY - R117 MLA - PELAT - MLA.	

© Navitech - lers03daorg0

Change: New spec.

THIS CHART IS A PART OF NAVIGRAPH NDAC AND IS INTENDED FOR FLIGHT SIMULATION USE ONLY

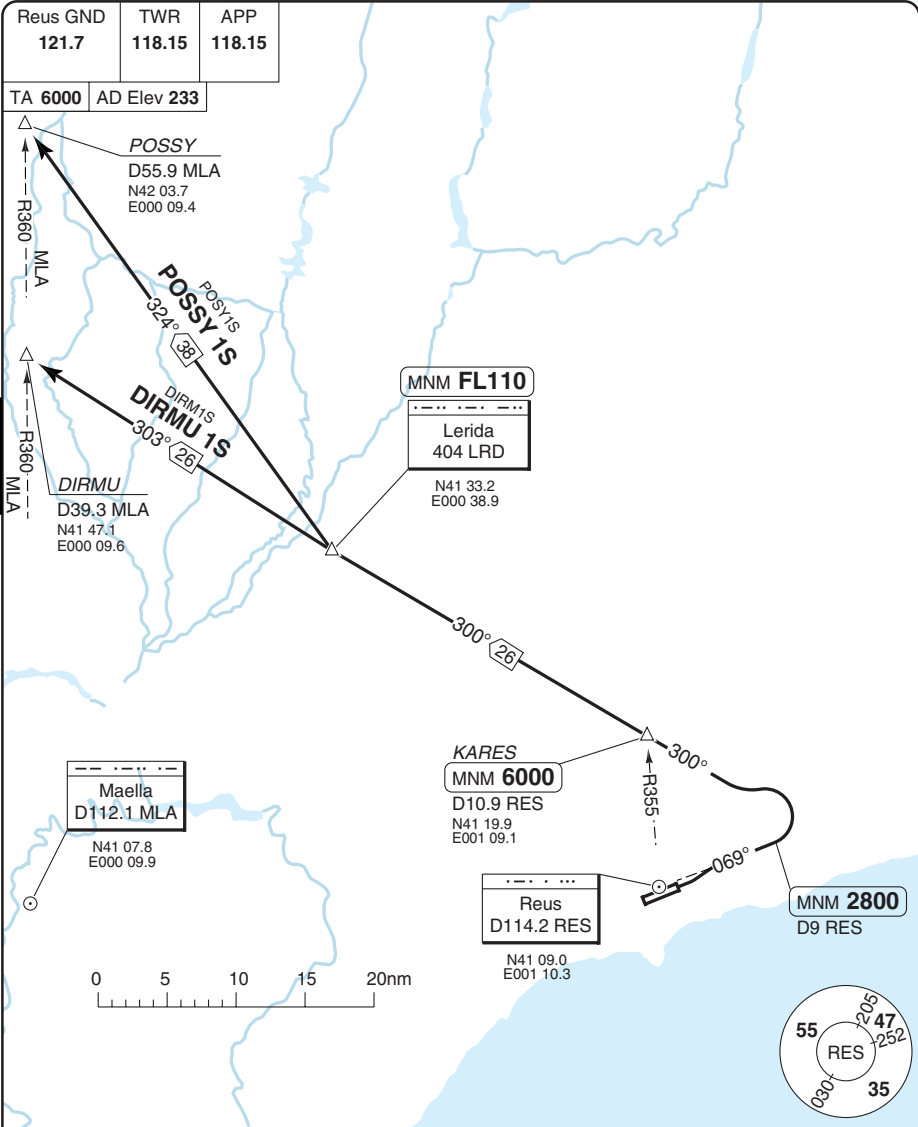
WEF 29 JUL 10

30 - 4 | 30 JUN 10

Spain - LERS / REU

SID RWY 07 Northwest

REUS



30 - 4

© Navitech - lers04daorg0

SPEED: MAX 250kt at or below FL100.
MNM CLIMB GRADIENT: 4.5% upto 6000.

SID	Routeing	Altitudes
DIRMU 1S	Climb on R069 RES - at D9 RES turn left - 300° to LRD - KARES - LRD - turn right to 303° from LRD - DIRMU.	D9 RES MNM 2800 KARES MNM 6000 LRD MNM FL110
POSSY 1S	Climb on R069 RES - at D9 RES turn left - 300° to LRD - KARES - LRD - turn right to 324° from LRD - POSSY.	

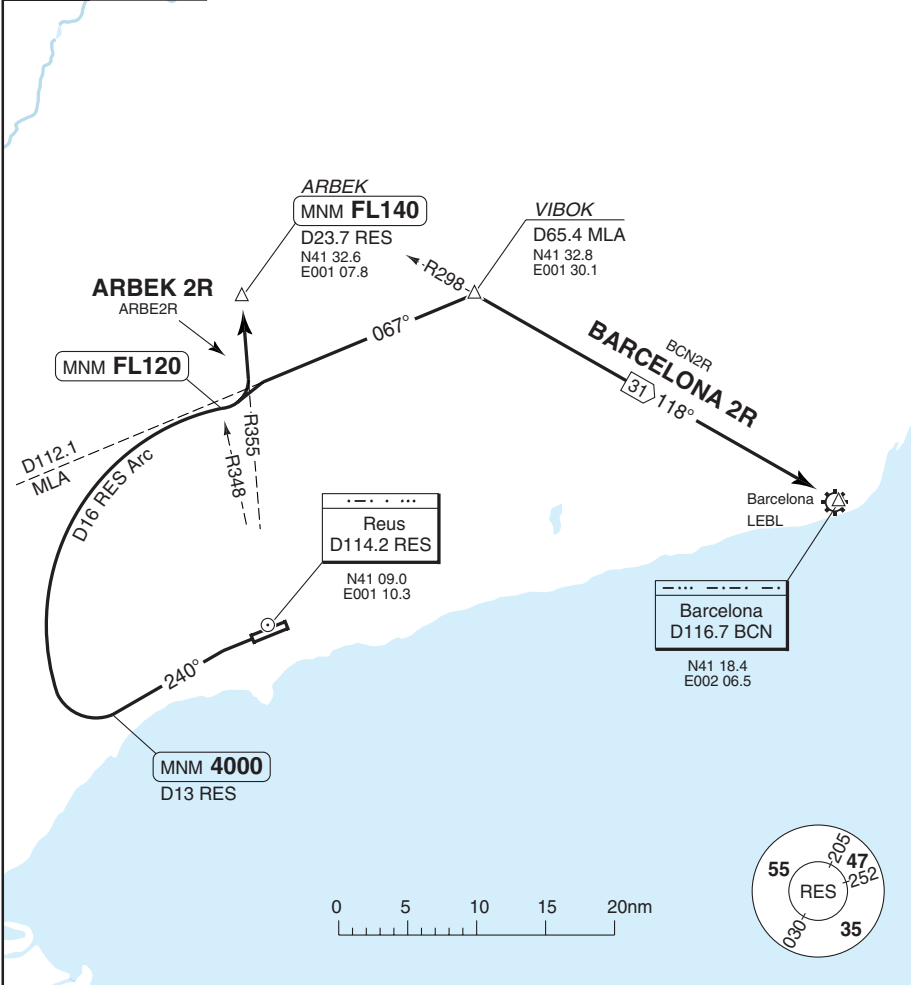
Change: New spec.

THIS CHART IS A PART OF NAVIGRAPH NDAC AND IS INTENDED FOR FLIGHT SIMULATION USE ONLY

SID RWY 25 Northeast

REUS

Reus GND 121.7	TWR 118.15	APP 118.15
TA 6000	AD Elev 233	



30 - 5

SPEED: MAX 250kt at or below FL100.

MNM CLIMB GRADIENT: 5.1% upto 4000.

SID	Routing	Altitudes
ARBEK 2R	Climb on R240 RES - at D13 RES turn right - D16 RES Arc - at R348 RES turn left to intcp R355 RES - ARBEK.	D13 RES MNM 4000 R348 RES MNM FL120 ARBEK MNM FL140
BARCELONA 2R	Climb on R240 RES - at D13 RES turn right - D16 RES Arc - at R348 RES turn left to intcp R067 MLA - VIBOK - turn right to intcp R298 BCN - BCN.	ARBEK MNM 4000 D13 RES MNM 4000 R348 RES MNM FL120

© Navitech - lers05daorg0

Change: New spec.

THIS CHART IS A PART OF NAVIGRAPH NDAC AND IS INTENDED FOR FLIGHT SIMULATION USE ONLY

SID RWY 25 Southeast

REUS

Reus GND 121.7	TWR 118.15	APP 118.15
-------------------	---------------	---------------

TA 6000 AD Elev 233

Reus
D114.2 RES

N41 09.0
E001 10.3

Barcelona
D116.7 BCN

N41 18.4
E002 06.5

Sabadell
D112.0 SLL

N41 31.2
E002 06.6

Barcelona
LEBL

RULOS
D32 CLE
N41 10.6
E002 16.9

D4.5
RES

D112.1
MLA

RUBOT 1R
RUBO1R

RUBOT
D37.5 SLL
N40 58.4
E001 42.4

RULO1R
RULOS 1R

GARBI
MNM FL140
D98.4 MLA
N40 48.2
E002 17.2

CAMBY
D17.1 RES
N40 51.9
E001 10.9

EBROX 3R
EBRO3R

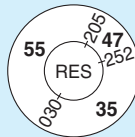
EBROX
D26.6 RES
N40 42.5
E001 13.9

D65.5
MLA

D84.5
MLA

GARBI 1R
GARBI1R

0 5 10 15 20nm



SPEED: MAX 250kt at or below FL100.

SID	Routing	Altitudes
EBROX 3R	Climb on R240 RES - at D4.5 RES turn left - HDG 127° intcp R178 RES - CAMBY - turn left to intcp R174 RES - EBROX.	
GARBI 1R	Climb on R240 RES - at D4.5 RES turn left - HDG 127° intcp R178 RES - R101 MLA - GARBI.	GARBI MNM FL140
RUBOT 1R	Climb on R240 RES - at D4.5 RES turn left - HDG 127° intcp R178 RES - R101 MLA - at D65.5 MLA turn left - R209 SLL - RUBOT.	
RULOS 1R	Climb on R240 RES - at D4.5 RES turn left - HDG 127° intcp R178 RES - R101 MLA - at D84.5 MLA turn left - R210 CLE - RULOS.	

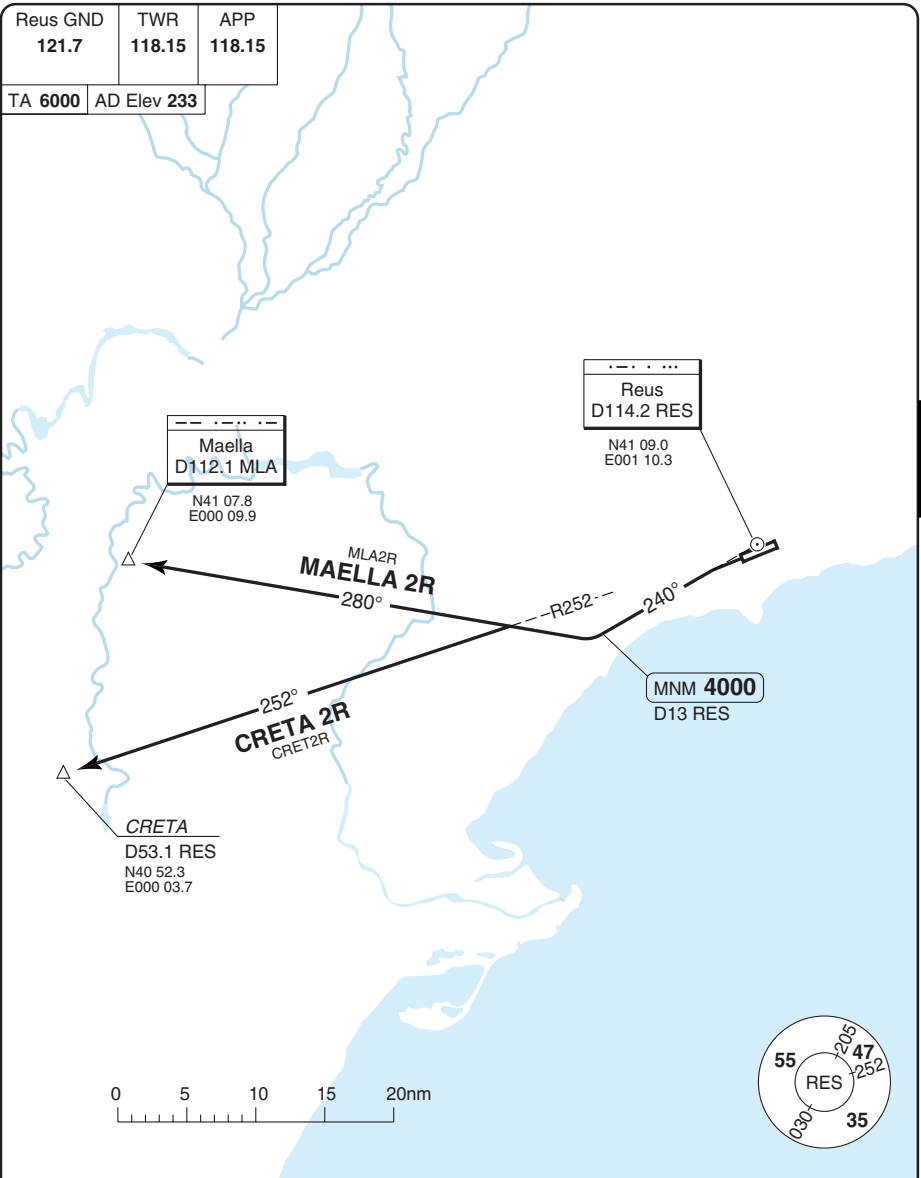
SID RWY 25 West

REUS

30 - 7

Reus GND 121.7	TWR 118.15	APP 118.15
-------------------	---------------	---------------

TA 6000 AD Elev 233



SPEED: MAX 250kt at or below FL100.

MNM CLIMB GRADIENT: 5.1% upto 4000.

SID	Routeing	Altitudes
CRETA 2R	Climb on R240 RES - at D13 RES turn right - R100 MLA - R252 RES - CRETA.	D13 MNM 4000
MAELLA 2R	Climb on R240 RES - at D13 RES turn right - R100 MLA - MLA.	

Change: New spec.

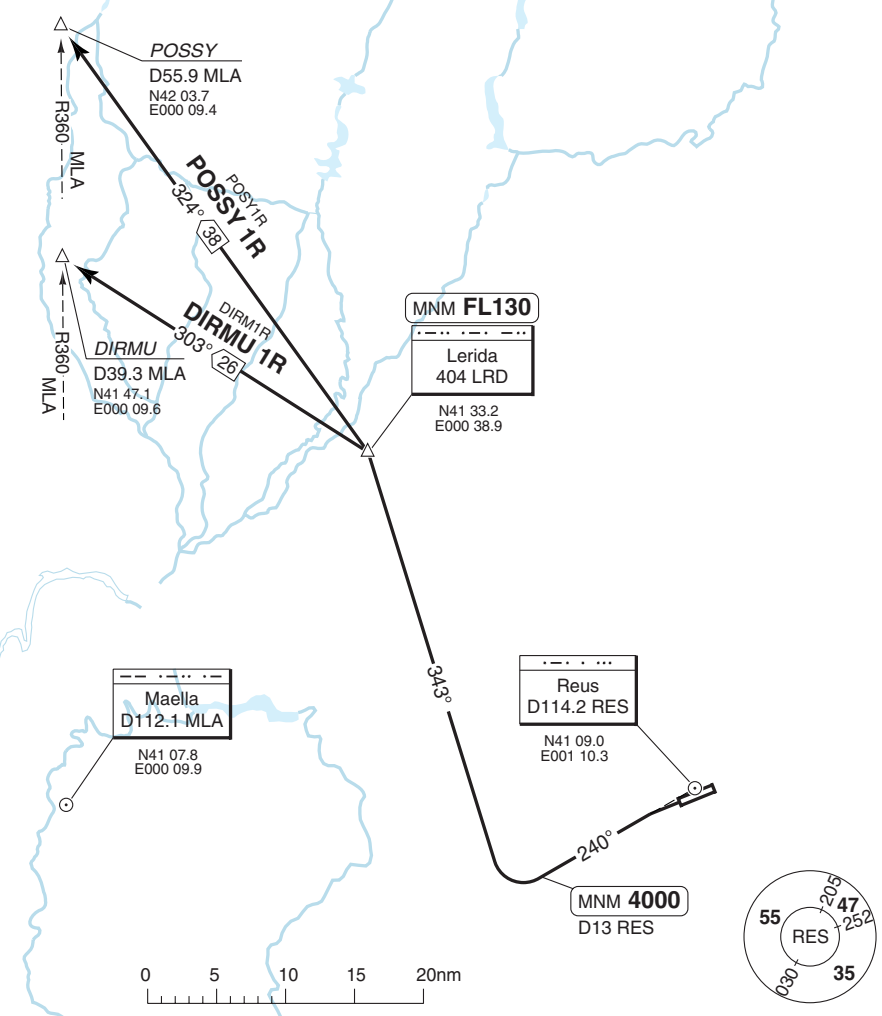
SID RWY 25 Northwest

REUS

Reus GND 121.7	TWR 118.15	APP 118.15
-------------------	---------------	---------------

TA 6000 AD Elev 233

30 - 8



SPEED: MAX 250kt at or below FL100.

MNM CLIMB GRADIENT: 5.1% upto 4000.

SID	Routing	Routing
DIRMU 1R	Climb on R240 RES - at D13 RES turn right - 343° to LRD - LRD - 303° from LRD - DIRMU.	D13 RES MNM 4000 LRD MNM FL130
POSSY 1R	Climb on R240 RES - at D13 RES turn right - 343° to LRD - LRD - 324° from LRD - POSSY.	

Change: New spec.

STAR RWY 07

REUS

Reus APP	TWR	GND
118.15	118.15	121.7

TL ATC	AD Elev 233
--------	-------------

① AMPOL 1P, EBROX 1P, POSSY 1P, SEROX 1P

SPEED
 MAX 230kt in HP at or below FL140.
 MAX 250kt on SLP.
 220kt when leaving IAF.

Descent planning
 ACFT shall plan their descent to cross the initial points of the procedure at the ALT mentioned and cross the speed limit points (SLP) at MNM FL100.

POSSY
 MAX FL200
 N42 03.7
 E000 09.4

POSSY 1P
 18 144°
 5000

Lerida
 404 LRD
 N41 33.2
 E000 38.9

SEROX
 MAX FL150
 D44.7 RES
 N41 20.8
 E000 13.1

18 176°
 5000

SEROX 1P
 26 106°
 5000

D24 RES
 285°
 5000

IAF
 Reus
 D114.2 RES
 N41 09.0
 E001 10.3

ATC 19
 285°
 5000

IAF DISET
 D19 RES
 N41 13.9
 E000 46.0

069°
 5000

IAF KERIP
 D19 RES
 N40 56.5
 E000 51.4

P137 Vandellós
 3500

SENIA
 D25.9 RES
 N40 52.1
 E000 44.3

AMPOL 1P
 AMPO1P

049°
 4500

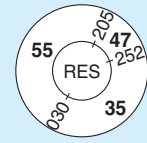
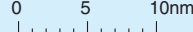
229°
 4500

AMPOL
 MAX FL100
 D31.9 RES
 N40 48.2
 E000 38.4

050°
 5000

D24 RES Arc
 EBROX 1P

EBROX
 MAX FL150
 D26.6 RES
 N40 42.5
 E001 13.9



STAR RWY 07 ¹

REUS

Reus APP	TWR	GND
118.15	118.15	121.7

TL ATC AD Elev 233

1 BARCELONA 1P, BERGA 1P, GIRONA 1P

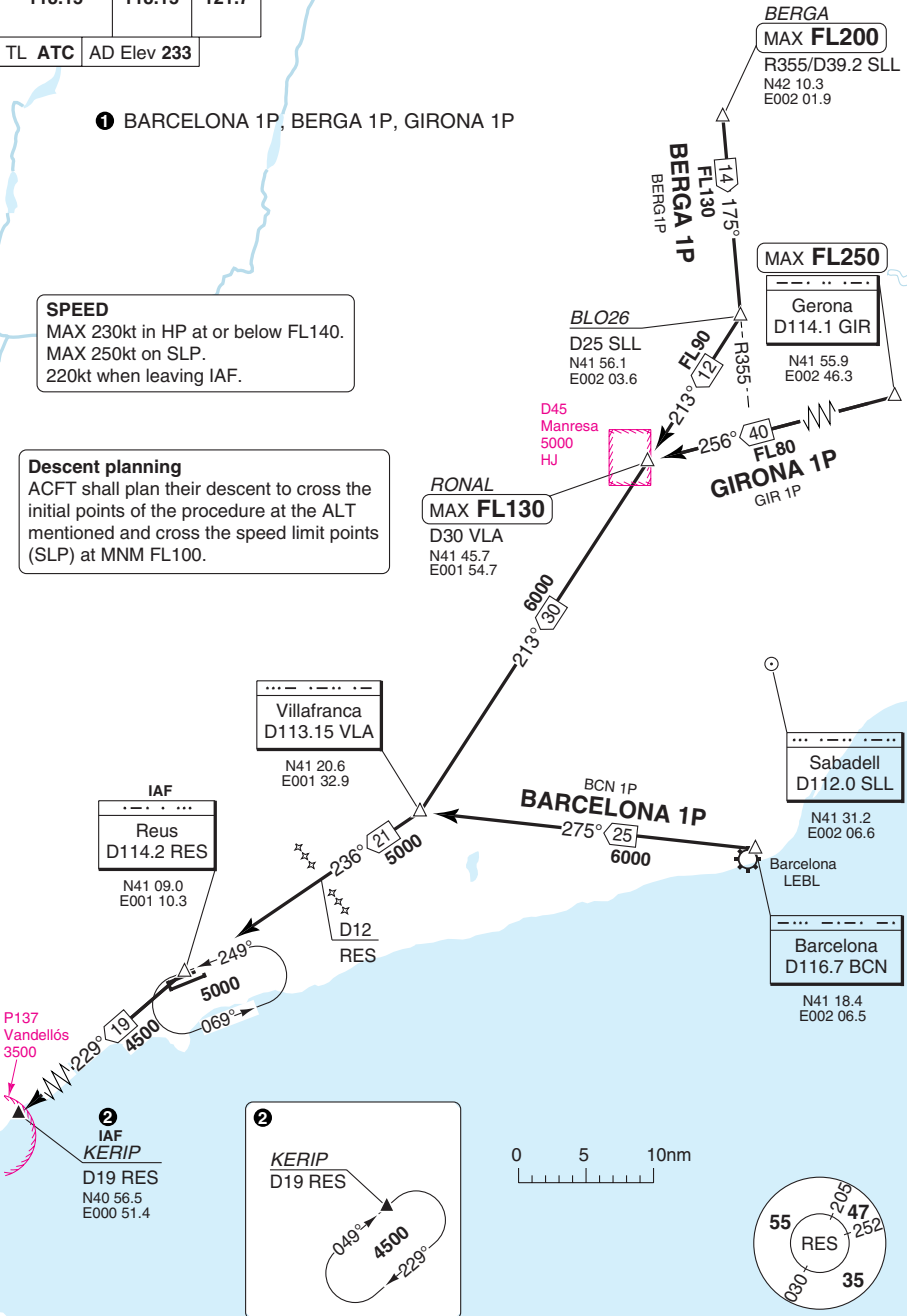
SPEED

MAX 230kt in HP at or below FL140.
MAX 250kt on SLP.
220kt when leaving IAF.

Descent planning

ACFT shall plan their descent to cross the initial points of the procedure at the ALT mentioned and cross the speed limit points (SLP) at MNM FL100.

40 - 2



© Navitech - lers02aaorg0

Change: New spec.

THIS CHART IS A PART OF NAVIGRAPH NDAC AND IS INTENDED FOR FLIGHT SIMULATION USE ONLY

STAR RWY 25 AMPOL 2Q, EBROX 3Q, POSSY 1Q, SEROX 1Q

REUS

40 - 3

Reus APP 118.15	TWR 118.15	GND 121.7
--------------------	---------------	--------------

TL ATC AD Elev 233

POSSY

MAX FL250
 R298/D98.7 BCN
 N42 03.7
 E000 09.4

GRAUS

R298/
 D87.7 RES
 N41 58.8
 E000 22.6

SEROX

MAX FL200
 D44.7 RES
 N41 20.8
 E000 13.1

SPEED

MAX 230kt in HP at or below FL140.
 MAX 250kt on SLP.
 220kt when leaving IAF.

Descent planning

ACFT shall plan their descent to cross the initial points of the procedure at the ALT mentioned and cross the speed limit points (SLP) at MNM FL100.

TIRGO

R290/D47 SLL
 N41 47.1
 E001 07.6

IAF

Reus
 424 RUS
 N41 08.9
 E001 08.8

IAF

Reus
 D114.2 RES
 N41 09.0
 E001 10.3

IAF

Villafranca
 D113.15 VLA
 N41 20.6
 E001 32.9

AMPOL 2Q

AMPO2Q

SENIA

D25.9 RES
 N40 52.1
 E000 44.3

AMPOL

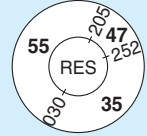
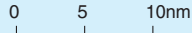
MAX FL150
 D31.9 RES
 N40 48.2
 E000 38.4

EBROX

MAX FL150
 D26.6 RES
 N40 42.5
 E001 13.9

EBROX 3Q

EBRO3Q
 D27
 6000



© Navitech - lers03aarorg

Change: RUS and hold

THIS CHART IS A PART OF NAVIGRAPH NDAC AND IS INTENDED FOR FLIGHT SIMULATION USE ONLY

STAR RWY 25 BARCELONA 2Q, BERGA 1Q, GIRONA 1Q

REUS

Reus APP 118.15	TWR 118.15	GND 121.7
---------------------------	----------------------	---------------------

TL ATC AD Elev 233

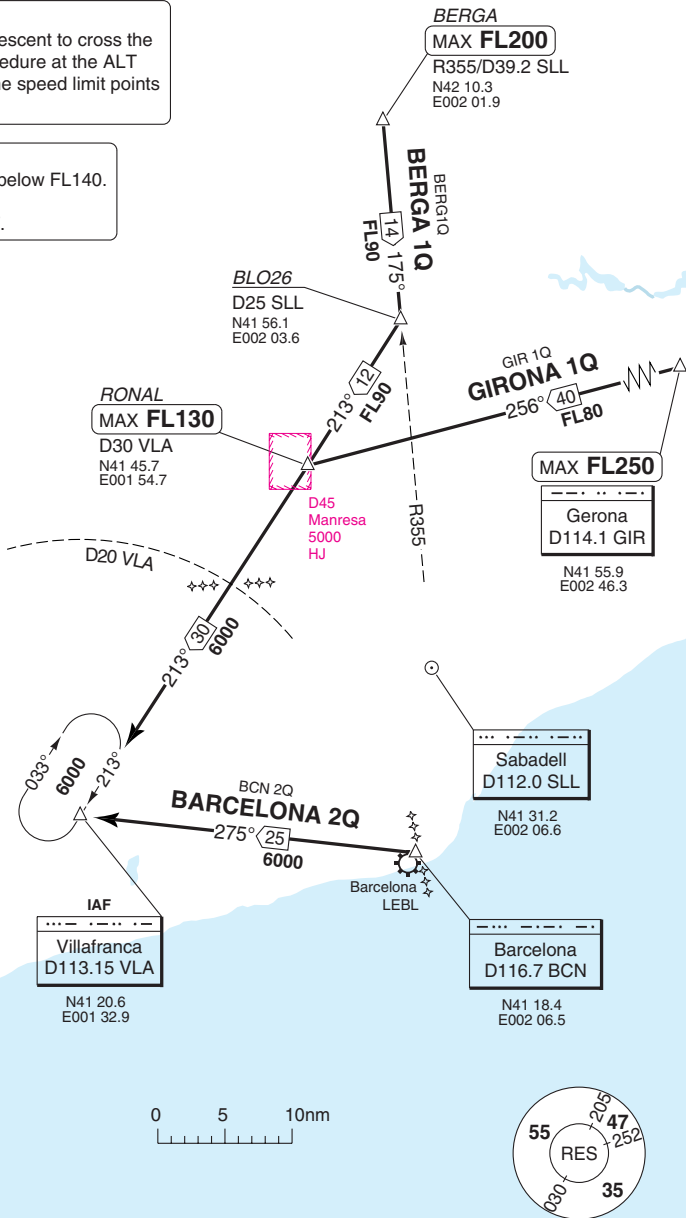
Descent planning

ACFT shall plan their descent to cross the initial points of the procedure at the ALT mentioned and cross the speed limit points (SLP) at MNM FL100.

SPEED

MAX 230kt in HP at or below FL140.
MAX 250kt on SLP.
220kt when leaving IAF.

40 - 4



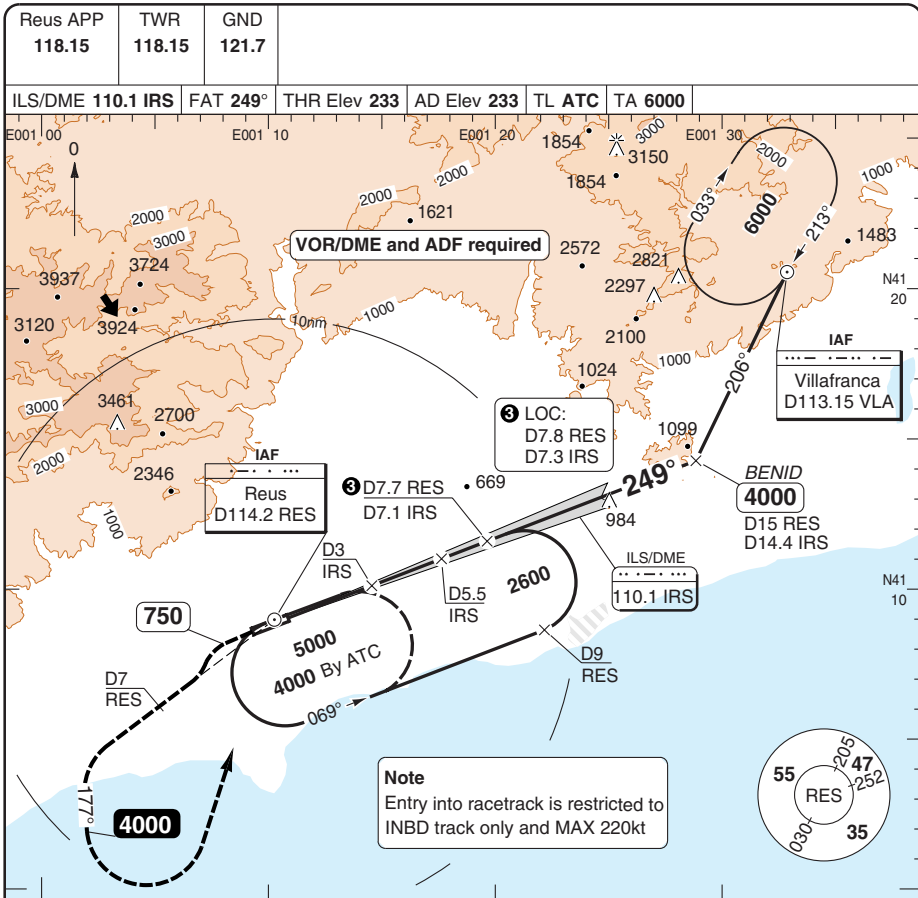
© Navitech - lers04aorg0

Change: RUS added

THIS CHART IS A PART OF NAVIGRAPH NDAC AND IS INTENDED FOR FLIGHT SIMULATION USE ONLY

ILS OR LOC Z RWY 25

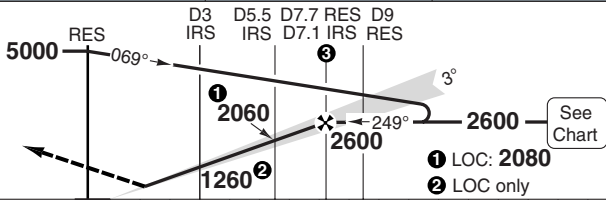
REUS



50 - 1

MAPt LOC: D1 IRS

Climb on 249° to 750.
Turn left and climb on R234 [RES]. At D7 [RES] turn left on 177° to 4000.
Turn left and return to and hold.



TCH 49

ACFT	ILS+DME	LOC+DME	Circling ^a
A	440 (200) 550m	750 (520) 1500m	850 (620) 1.5km
B	440 (200) 550m		890 (660) 1.6km
C	440 (207) 550m	750 (520) 1600m	1050 (820) 2.4km
D	450 (217) 550m		1080 (850) 3.6km

^a South of AD

DME RES	3° ALT	DME IRS	3° ALT
7.8	2600	7.3	2600
7	2350	7	2510
6	2030	6	2190
5	1700	5	1870
4	1380	4	1550
3	1060	3	1230
2	750	2	920

LDA 2459x45
8067x147ft
P 3°L/R (47)

FALS

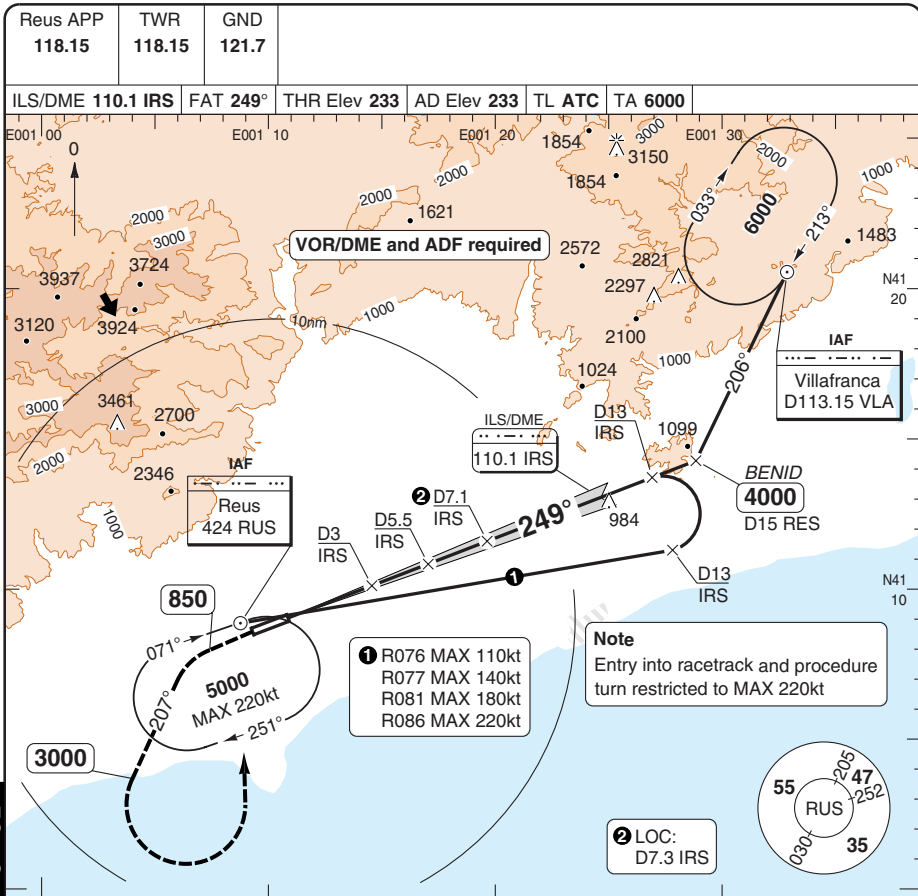
© Navtech - lers01iaip00

Change: Renamed

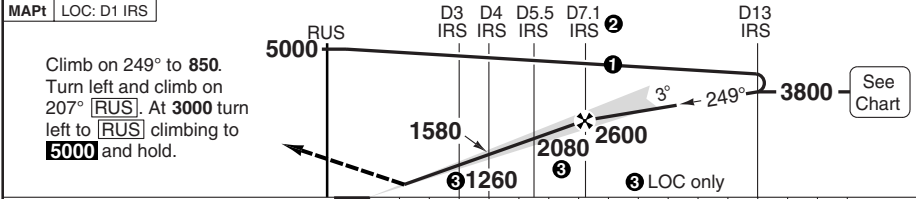
THIS CHART IS A PART OF NAVIGRAPH NDAC AND IS INTENDED FOR FLIGHT SIMULATION USE ONLY

ILS OR LOC Y RWY 25

REUS



50 - 2



ACFT	ILS+DME	LOC+DME	Circling ^a	^a South of AD	DME	3° ALT	LDA 2459x45 8067x147ft P 3°L/R (47)	
A	440 (200) 550m	750 (520) 1500m	850 (620) 1.5km		7.3	2600		
B	440 (200) 550m		890 (660) 1.6km		7	2510		
C	440 (207) 550m	750 (520) 1600m	1050 (820) 2.4km		6	2190		
D	450 (217) 550m		1080 (850) 3.6km		4	1550		
GS	80	100	120	140	160	3		1230
ROD 3°	420	530	640	740	850	2		920
FAF-MAPt	4:44	3:47	3:09	2:42	2:22	1.5		750

© Navtech - lers02iaip00

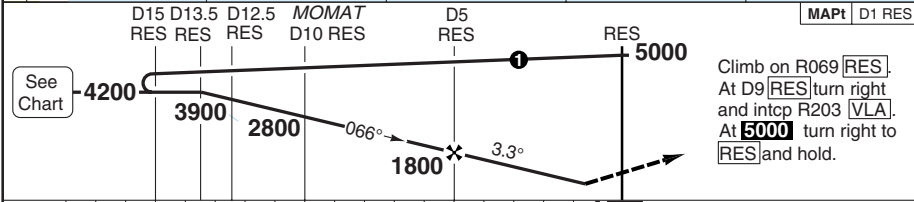
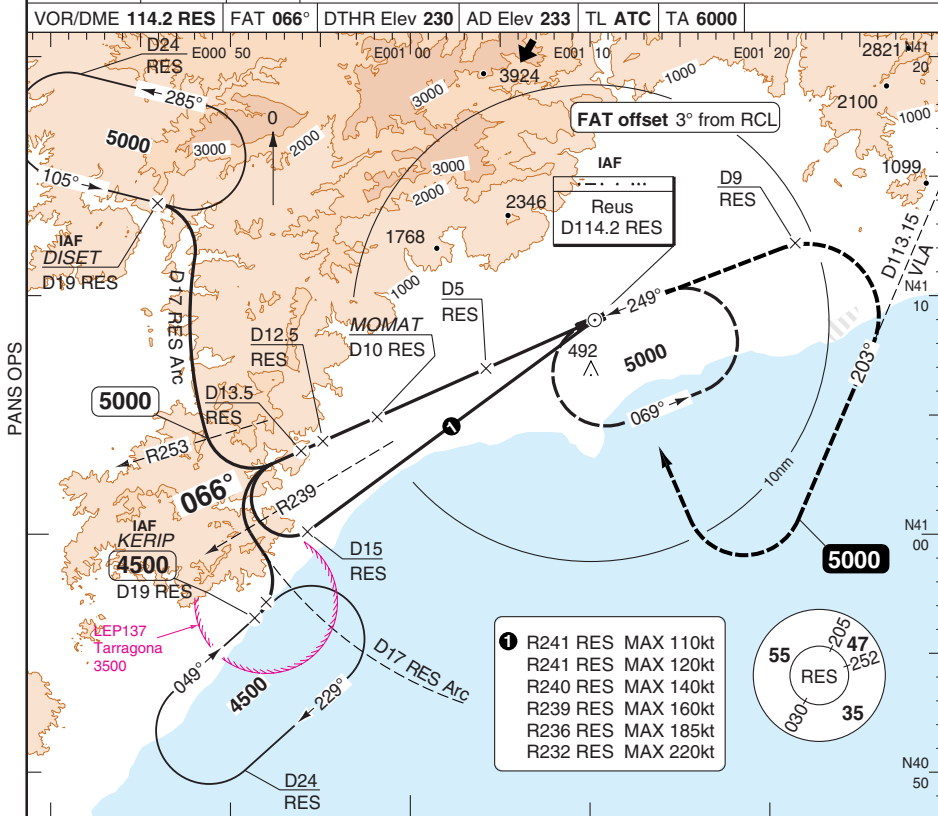
Change: New chart

THIS CHART IS A PART OF NAVIGRAPH NDAC AND IS INTENDED FOR FLIGHT SIMULATION USE ONLY

VOR RWY 07

REUS

Reus APP 118.15	TWR 118.15	GND 121.7
VOR/DME 114.2 RES FAT 066° DTNR Elev 230 AD Elev 233 TL ATC TA 6000		



ACFT	VOR+DME	Circling a	a South of AD	DME RES	3.3° ALT	LDA 2190x45 7185x147ft P 3°L/R (56)	
A	730 (500)	850 (620)		11.9	4200		
B	1500m	890 (660)		10	3540		
C	730 (500)	1050 (820)		7	2500		
D	2300m	1080 (850)		6	2150		
		3.6km		5	1800		
				4	1460		
				3	1110		
				1.9	730		
GS	80	100	120	140	160		
ROD 3.3°	470	580	700	820	930		

© Navtech - lers03iaip00

50 - 3

NALS

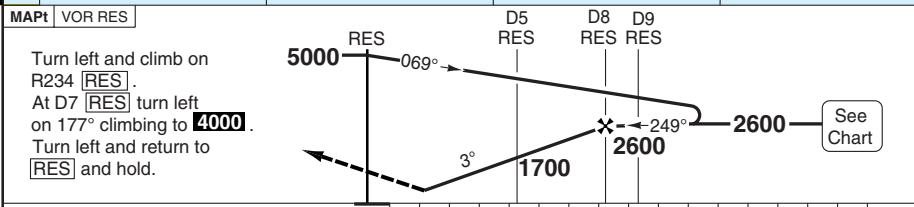
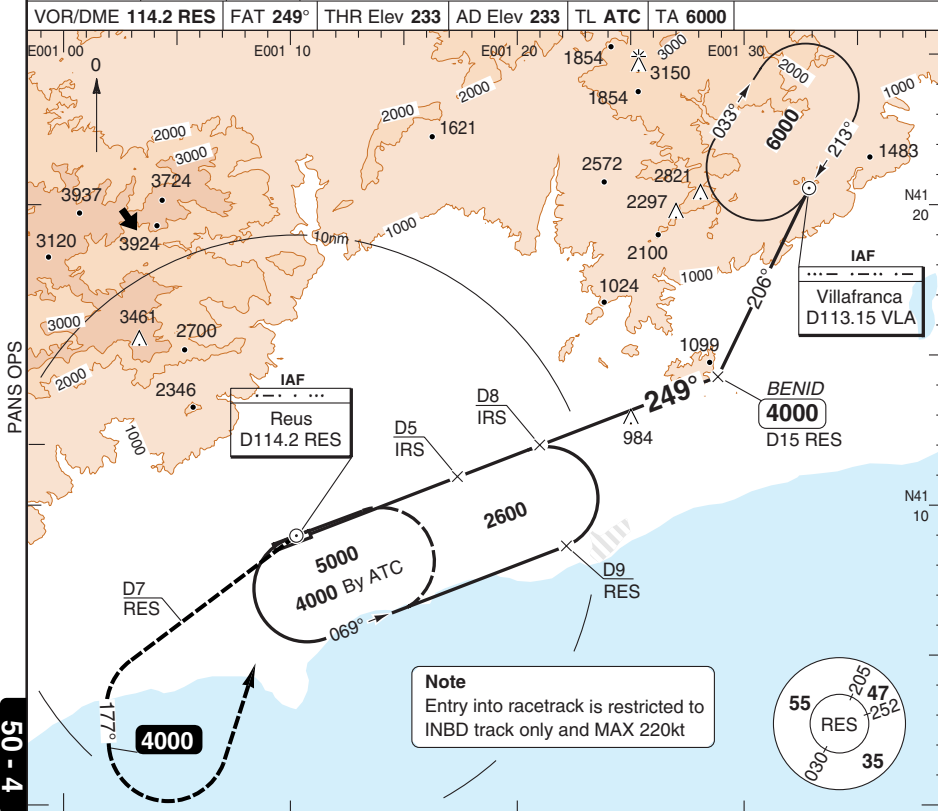
Change: Renumbered

THIS CHART IS A PART OF NAVIGRAPH NDAC AND IS INTENDED FOR FLIGHT SIMULATION USE ONLY

VOR RWY 25

REUS

Reus APP 118.15	TWR 118.15	GND 121.7					
VOR/DME 114.2 RES			FAT 249°	THR Elev 233	AD Elev 233	TL ATC	TA 6000

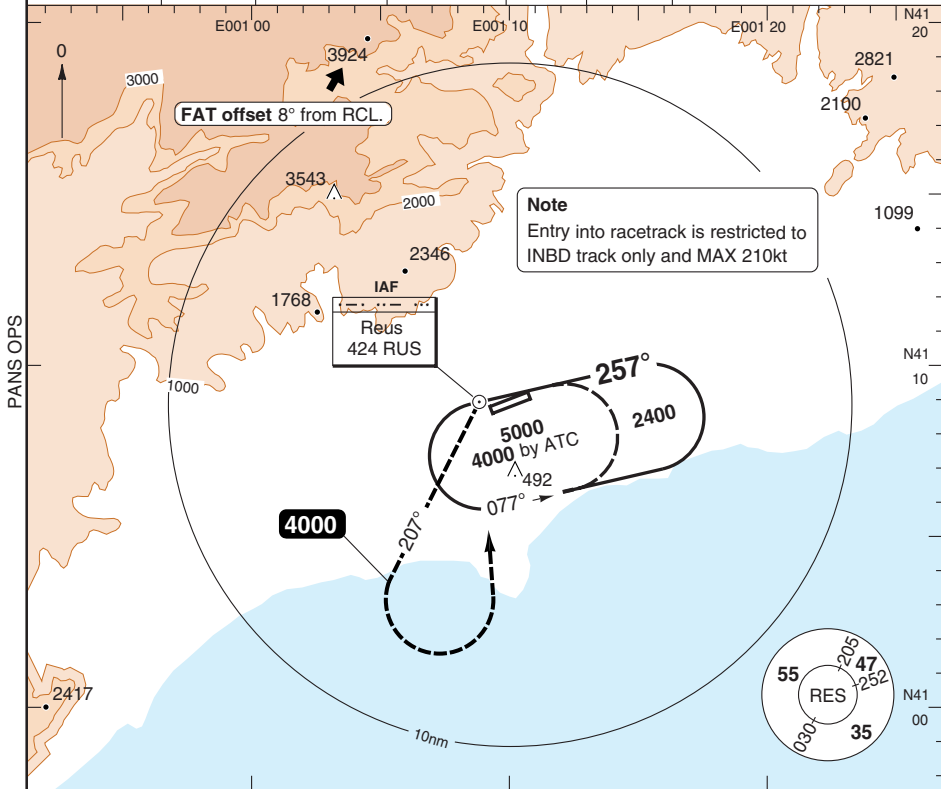


© Navtech - lers04iaip00

NDB RWY 25

Reus APP 118.15	TWR 118.15	GND 121.7
---------------------------	----------------------	---------------------

NDB 424 RUS	FAT 257°	THR Elev 233	AD Elev 233	TL ATC	TA 6000
--------------------	-----------------	---------------------	--------------------	---------------	----------------



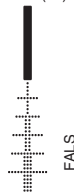
MAPt NDB RUS

Turn left and climb on 207° from [RES] to **4000**, then turn left to [RES].



ACFT	NDB Circling a	a South of AD
A	1350 (1120) 1.5km	
B	1350 (1120) 1.6km	
C	1350 (1120) 2.4km	
D	1350 (1120) 3.6km	

LDA 2459x45
8067x147ft
P 3°L/R (47)



JAR-OPS Landing Minima

REUS

The following Minima is for Public Transport aircraft and conforms to JAR-OPS1 regulations.

STRAIGHT-IN APPROACH		C				D			
R/W	Procedure	DA/ MDA QNH ft	DH/ MDH QFE ft	RVR m	RVR No ALS m	DA/ MDA QNH ft	DH/ MDH QFE ft	RVR m	RVR No ALS m
07	VOR/DME	730	500	2000	N/A	730	500	2000	N/A
25	ILS/DME	440	210	600	1000	450	220	600	1000
25	LOC/DME	760	520	1200	2000	760	520	1600	2000
25	VOR/DME (1)	860	620	1200	2000	860	620	1600	2000

Notes:

(1) Procedure based on aerodrome elevation.

CIRCLING		C			D		
R/W	Procedure	MDA QNH ft	MDH QFE ft	Vis m	MDA QNH ft	MDH QFE ft	Vis m
25	NDB (1)	1360	1120	2400	1360	1120	3600
	All other procs (1)	1060	820	2400	1090	850	3600

Notes:

(1) Prohibited in sector 258° clockwise to 060°.

TAKE-OFF		C	D
Runway	Facilities	m	m
	RCLL(H)+REDL(H)+Multi RVR (1)	-	-
	RCLL+REDL+Multi RVR	-	-
	RCLL+REDL	-	-
07, 25	RCL and/or REDL (2)	250	300
All	Nil (Day only)	500	500

Notes:

(1) Subject to Approval.

(2) For night operations, at least runway edge and end lights required.

JAR-OPS Landing Minima

REUS

The following Minima is for Public Transport aircraft and conforms to JAR-OPS1 regulations.

STRAIGHT-IN APPROACH		A				B			
R/W	Procedure	DA/ MDA QNH ft	DH/ MDH QFE ft	RVR m	RVR No ALS m	DA/ MDA QNH ft	DH/ MDH QFE ft	RVR m	RVR No ALS m
07	VOR/DME	730	500	1500	N/A	730	500	1500	N/A
25	ILS/DME	440	200	550	1000	440	200	550	1000
25	LOC/DME	760	520	1000	1500	760	520	1200	1500
25	VOR/DME (1)	860	620	1000	1500	860	620	1200	1500

Notes:

(1) Procedure based on aerodrome elevation.

CIRCLING		A			B		
R/W	Procedure	MDA QNH ft	MDH QFE ft	Vis m	MDA QNH ft	MDH QFE ft	Vis m
25	NDB (1)	1360	1120	1500	1360	1120	1600
All other procs (1)		860	620	1500	900	660	1600

Notes:

(1) Prohibited in sector 258° clockwise to 060°.

TAKE-OFF		A	B
Runway	Facilities	m	m
	RCLL(H)+REDL(H)+Multi RVR (1)	-	-
	RCLL+REDL+Multi RVR	-	-
	RCLL+REDL	-	-
07, 25	RCL and/or REDL (2)	250	250
All	Nil (Day only)	500	500

Notes:

(1) Subject to Approval.

(2) For night operations, at least runway edge and end lights required.