

## Airport information:

Country: Spain

City: IBI ZA

Coordinates: N 38° 52.4', E001 22.4

Elevation: 24

Customs: Customs

Fuel: 100LL, Jet A1

RFF: CAT9 1st April to 31st October. CAT7 1st November to 31st March

hours: Last SUN APR-31OCT: H24. 01NOV-last SAT APR 0630-2300, 1 HR PPR. Cargo TFC 06

## Runways:

Runway 06

Takeoff length: 2800, Landing length: 2800

Runway 24

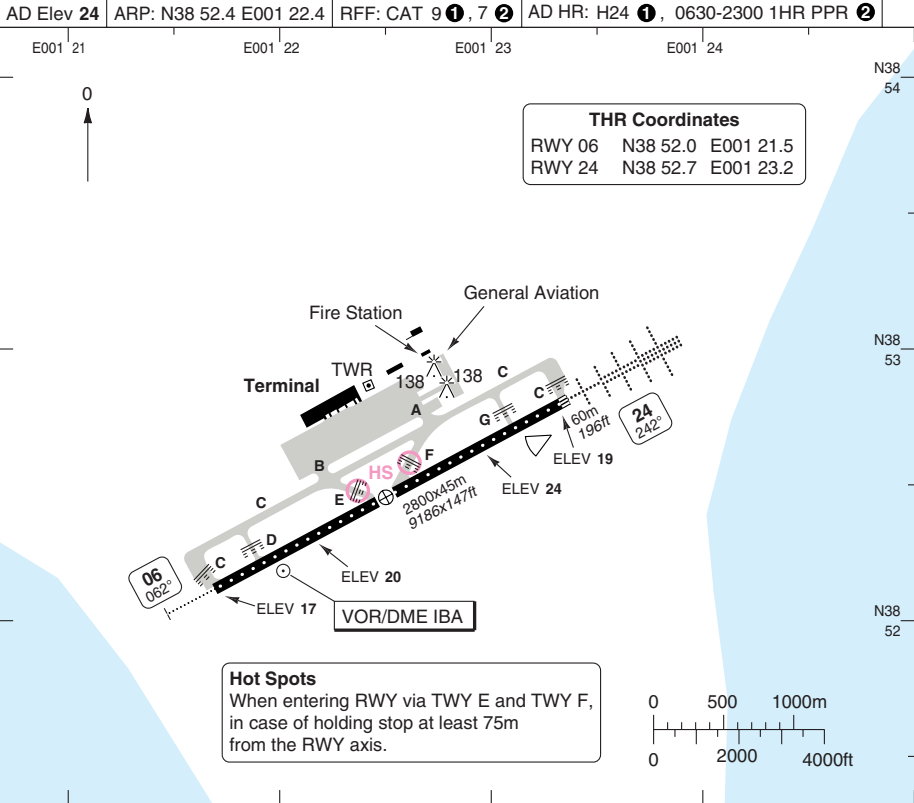
Takeoff length: 2800, Landing length: 2800

# AERODROME

# IBIZA

10 - 1

Ibiza CLR <b>121.375</b>	GND <b>121.925</b>	TWR <b>118.5</b>	ATIS <b>119.8</b>
AD Elev <b>24</b>		ARP: N38 52.4 E001 22.4	RFF: CAT 9 <b>①</b> , 7 <b>②</b>
AD HR: H24 <b>①</b> , 0630-2300 1HR PPR <b>②</b>			



RWY	Slope	TORA m/ft	LDA m/ft	ALS	REDL	RCLL	Additional
06	0	2800 / 9186	2800 / 9186	H-E <b>③</b>	H	15m	P 3° L/R (57)
24	0	2800 / 9186	2800 / 9186	H-C	H	15m	P 3° L/R (60)

**①** Summer (01 APR - 31 OCT) **②** Winter (01 NOV - 31 MAR) **③** 300m.

STATE		TAKE OFF MINIMA			
RWY	Facilities	RVR			
		A	B	C	D
06/24	RCLL + REDL		<b>LVTO</b>	200m	250m
	RCL (day only) or RCL + REDL		<b>LVTO</b>	250m	300m
	RCL (day only) or RCL + REDL		<b>LVTO</b>	400m	400m
	NIL (day only)		<b>LVTO</b>	550m	550m
	NIL (day only)			>550m	>550m

© Navitech - leib01laorg0

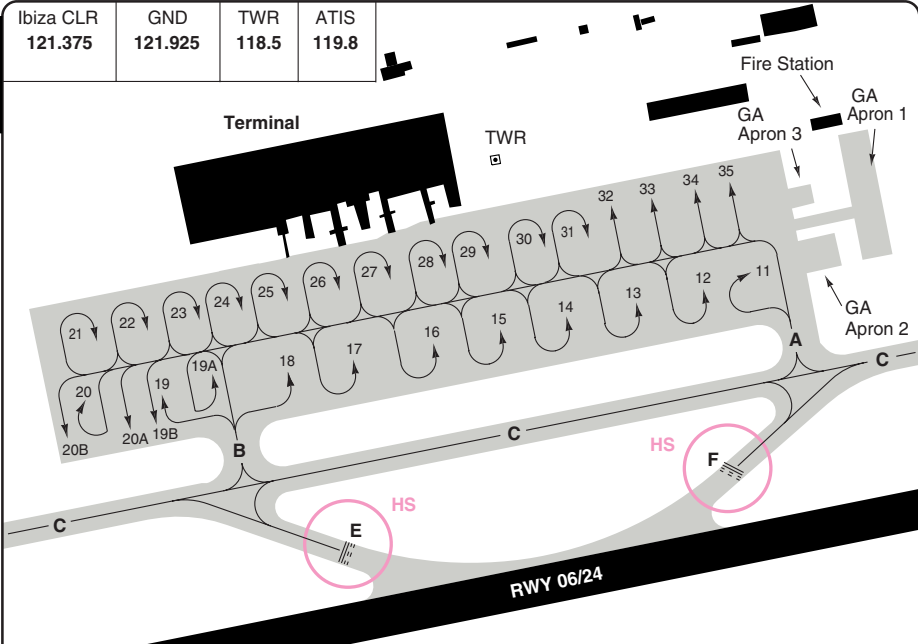
Change: THR Elev, MEHT

**THIS CHART IS A PART OF NAVIGRAPH NDAC AND IS INTENDED FOR FLIGHT SIMULATION USE ONLY**

# AERODROME

# IBIZA

10 - 2



### Parking position coordinates

11	N38 52.6	E001 22.5	19-19B, 20A	N38 52.4	E001 22.0	26	N38 52.5	E001 22.1
12-13,33	N38 52.6	E001 22.4	20, 20B	N38 52.4	E001 21.9	28-29	N38 52.6	E001 22.2
14-15	N38 52.5	E001 22.3	21	N38 52.5	E001 21.9	30-32	N38 52.6	E001 22.3
16-17,27	N38 52.5	E001 22.2	22-23	N38 52.5	E001 22.0	34-35	N38 52.7	E001 22.4
18	N38 52.4	E001 22.1	24-25	N38 52.5	E001 22.1			

### GENERAL INFORMATION

**1. WARNING**

Bird hazard.

**2. PREFERENTIAL RWY SYSTEM**

RWY 24.

**3. SPEED**

MAX 250kt below FL100.

**4. TRAFFIC NOTES**

Departing ACFT must immediately after TKOF:

- Reduce engine power.
- NW-bound traffic: No turn before D8 IBA, (RWY 24 only 22-05LT)

**5. TAXI RESTRICTION**

- 5.1 RWY 24 in use: Enter Apron via TWY B. RWY 06 in use: Enter Apron via TWY A.
- 5.2 Report stand number when requesting engine start-up.
- 5.3 ACFT must be ready for push-back or taxi within 5 minutes of start-up. Inform ATC if unavailable.

5.4 Push-back will be carried out heading RWY 24 - East

RWY 06 - West

5.5 If significant increase in thrust is required on the Apron, co-ordinate with Airport Control Service and marshall supervision.

**6. REVERSE THRUST**

Do not use more than idle thrust during 22 - 05 hours, except for safety reasons.

**7. LOW VISIBILITY PROCEDURES**

- 7.1 The pilot will be inform if low visibility procedure are applied across ATIS.
- 7.2 Report RWY vacated and TWY used.
- 7.3 At apron entry ACFT must wait for follow-me guidance to assigned stand.

© Navitech - leib02laorg0

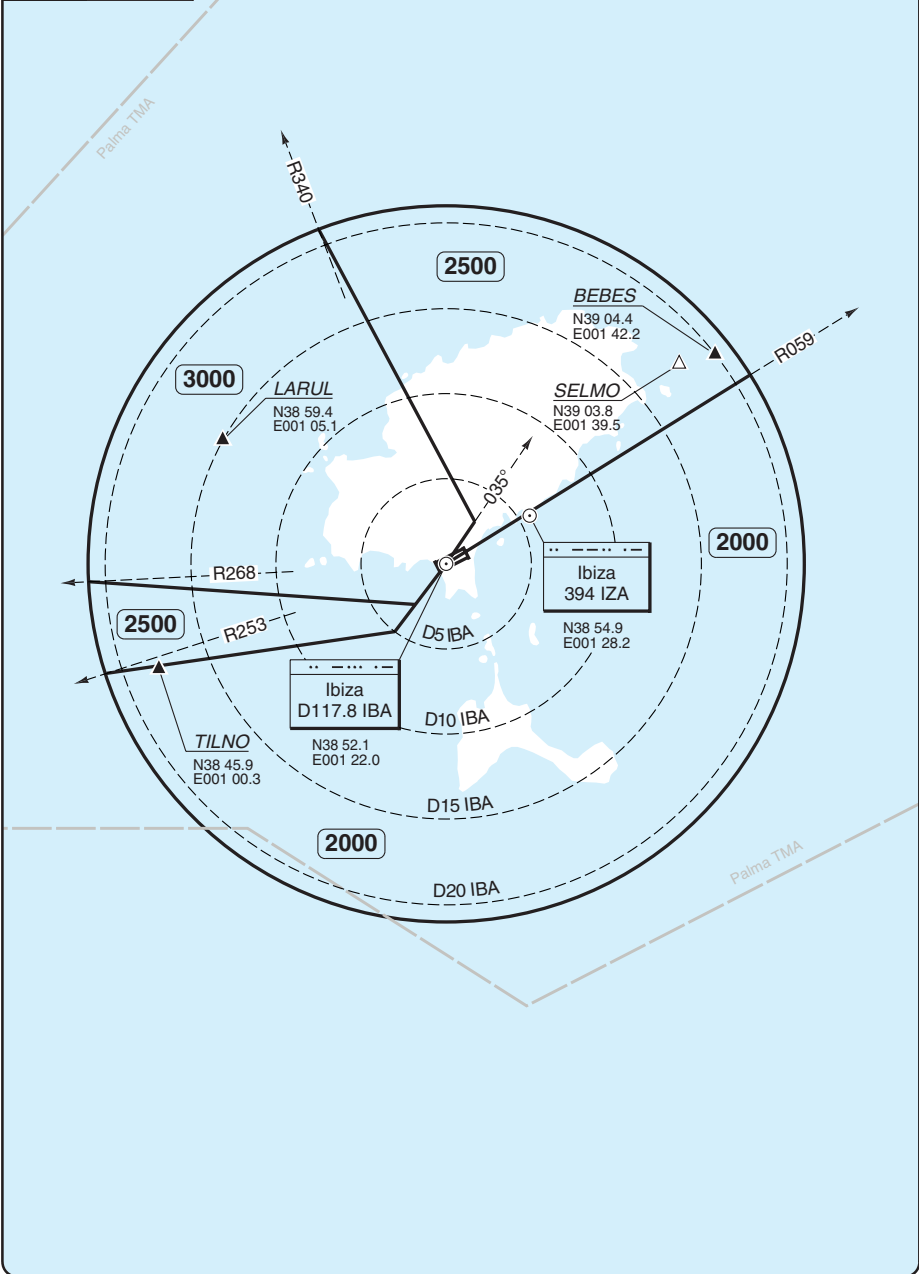
Change: Stands

**THIS CHART IS A PART OF NAVIGRAPH NDAC AND IS INTENDED FOR FLIGHT SIMULATION USE ONLY**

# RADAR Minimum Altitudes

Ibiza APP <b>134.825</b>	Palma APP <b>118.125</b>	Ibiza TWR <b>118.5</b>	GND <b>121.925</b>	ATIS <b>119.8</b>
-----------------------------	-----------------------------	---------------------------	-----------------------	----------------------

TL ATC AD Elev 24



Change: Comms.

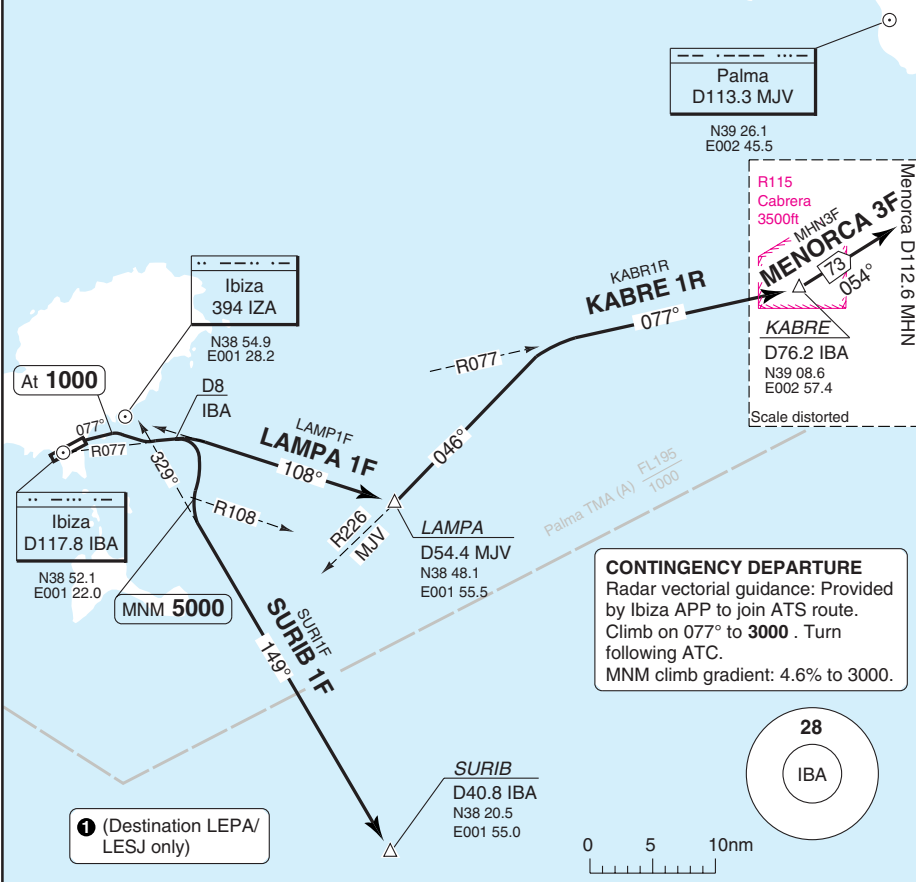
**THIS CHART IS A PART OF NAVIGRAPH NDAC AND IS INTENDED FOR FLIGHT SIMULATION USE ONLY**

SID RWY 06 East

IBIZA

Ibiza CLR 121.375	GND 121.925	TWR 118.5	APP 134.825	ATIS 119.8
----------------------	----------------	--------------	----------------	---------------

TA 6000 AD Elev 24



**ALT RESTRICTION:** Climb to **6000** and request FL change en-route.

SID	MNM Climb	Routeing	Altitudes
<b>(INITIAL CLIMB)</b>		Climb on 077° - at 1000 turn right - R077 IBA - follow SID.	
<b>KABRE 1R</b> (Destination LEMH only)		Intcp on 108° from IZA - LAMPA - turn left - R226 MJV - intcp R077 IBA - KABRE.	
<b>LAMPA 1F</b> ①		Intcp on 108° from IZA - LAMPA.	
<b>MENORCA 3F</b>		Intcp 108° from IZA - LAMPA - turn left - R226 MJV - intcp R077 IBA - KABRE - turn left - R234 MHN - MHN.	
<b>SURIB 1F</b>	6.5% to 6000	At D8 IBA turn right on D10 IBA Arc - at R108 IBA turn left on 149° from IZA - SURIB.	R108 IBA MNM 5000

© Navitech - leib01daorg0

30 - 1

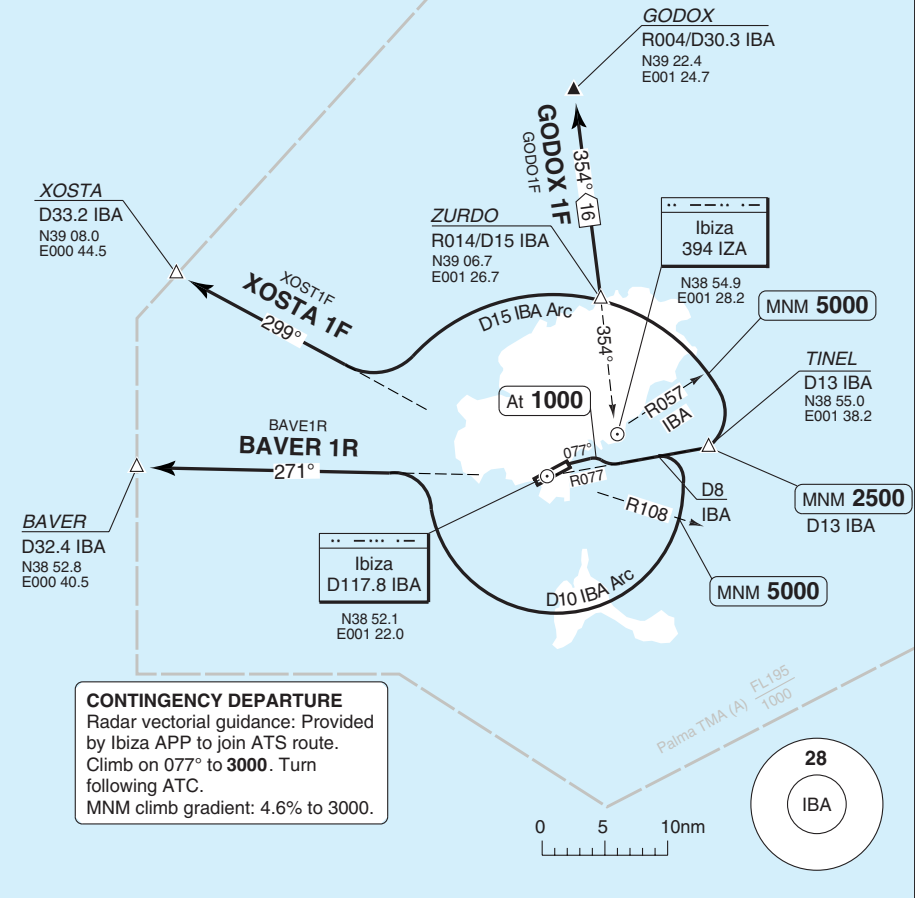
SID RWY 06 West

IBIZA

Ibiza CLR	GND	TWR	APP	ATIS
121.375	121.925	118.5	134.825	119.8

TA 6000 AD Elev 24

30 - 2



SID	MNM Climb	Routeing	Altitudes
<b>(INITIAL CLIMB)</b>		Climb on 077° - at 1000 turn right - R077 IBA - follow SID.	
<b>BAVER 1R</b>	6.5% to 6000	At D8 IBA turn right on D10 IBA Arc - intcp R271 IBA - BAVER .	R108 IBA MNM 5000
<b>GODOX 1F</b>	4.4% to 5000	TINEL - turn left - D15 IBA Arc to ZURDO - turn right - 354° from IZA - GODOX.	TINEL MNM 2500 R057 IBA MNM 5000
<b>XOSTA 1F</b>	4.4% to 5000	TINEL - turn left - D15 IBA Arc - continue to intcp R299 IBA - XOSTA.	TINEL MNM 2500 R057 IBA MNM 5000

© Navitech - leib02claugo

Change: Completely revised

**THIS CHART IS A PART OF NAVIGRAPH NDAC AND IS INTENDED FOR FLIGHT SIMULATION USE ONLY**

SID RWY 24 East

IBIZA

Ibiza CLR 121.375	GND 121.925	TWR 118.5	APP 134.825	ATIS 119.8
----------------------	----------------	--------------	----------------	---------------

TA 6000 AD Elev 24

Palma  
D113.3 MJV

N39 26.1  
E002 45.5

**CONTINGENCY DEPARTURE**

Radar vectorial guidance: Provided by Ibiza APP to join ATS route.  
Climb on 242° to 3000. Turn following ATC.  
MNM climb gradient: 4.6% to 3000.

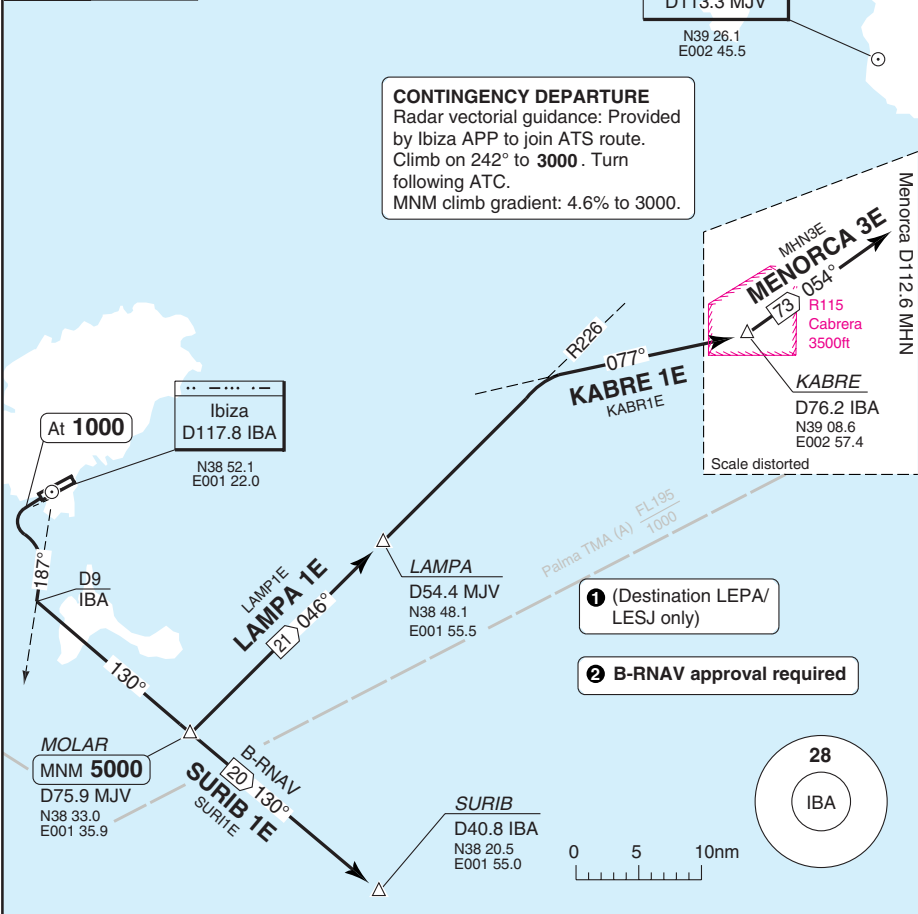
Palma de Mallorca  
LEPA



MHN30E  
**MENORCA 3E**  
R115  
Cabrera  
3500ft  
KABRE  
D76.2 IBA  
N39 08.6  
E002 57.4

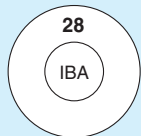
Menorca D112.6 MHN

3-03



1 (Destination LEPA/ LESJ only)

2 B-RNAV approval required



**MNM CLIMB GRADIENT:** 4% to 1000.

**ALT RESTRICTION:** Climb to **6000** and request FL change en-route.

SID	Routeing	Altitudes
<b>INITIAL CLIMB</b>	Climb on 244° - at 1000 turn left - R187 IBA - at D9 IBA turn left - 130° - MOLAR - follow SID.	MOLAR MNM 5000
<b>KABRE 1E</b> (Destination LEMH only)	Turn left - 046°/R226 MJV - LAMPA - follow R226 MJV - intcp R077 IBA - KABRE.	
<b>LAMPA 1E 1</b>	Turn left - 046°/R226 MJV - LAMPA.	
<b>MENORCA 3E</b>	Turn left - 046°/R226 MJV - LAMPA - follow R226 MJV - intcp R077 IBA - KABRE - turn left - 054°/R234 MHN - MHN.	
<b>SURIB 1E 2</b>	Continue on 130° to SURIB.	

© Navitech - leib03daorg

Change: KABRE 1E, LAMPA 1E, SID designator

**THIS CHART IS A PART OF NAVIGRAPH NDAC AND IS INTENDED FOR FLIGHT SIMULATION USE ONLY**

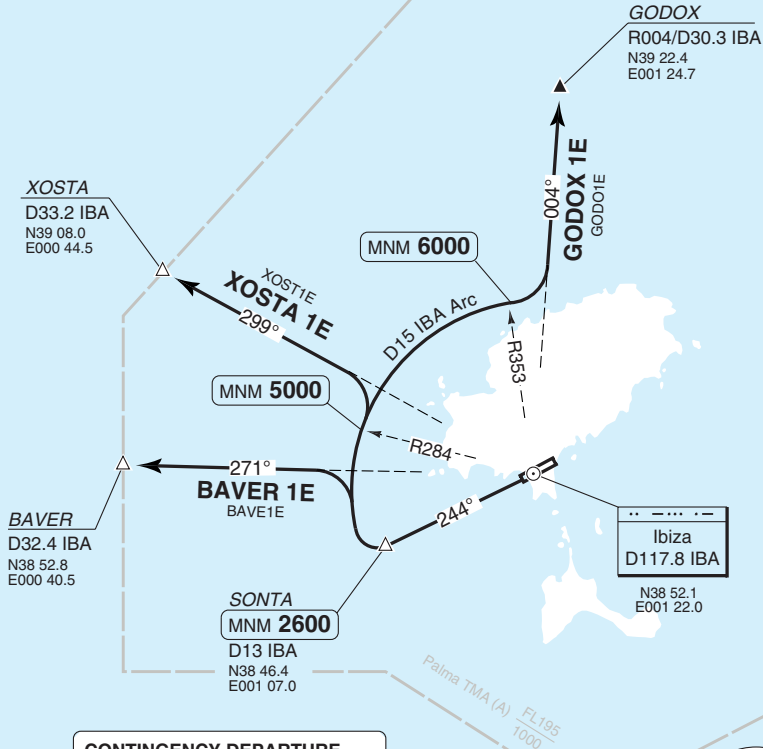
SID RWY 24 West

IBIZA

Ibiza CLR 121.375	GND 121.925	TWR 118.5	APP 134.825	ATIS 119.8
----------------------	----------------	--------------	----------------	---------------

TA 6000 | AD Elev 24

30 - 4



**CONTINGENCY DEPARTURE**  
 Radar vectorial guidance: Provided by Ibiza APP to join ATS route. Climb on 242° to 3000. Turn following ATC. MNM climb gradient: 4.6% to 3000.

**MNM CLIMB GRADIENT:** 4% to 1000.

**ALT RESTRICTION:** Climb to **6000** (GODOX 1E: **FL70**) and request FL change en-route.

SID	Routeing	Altitudes
<b>(INITIAL CLIMB)</b>	Climb on R244 IBA - SONTA - follow SID.	SONTA MNM 2600
<b>BAVER 1E</b>	Turn right - follow D15 IBA Arc - intcp R271 IBA - BAVER.	
<b>GODOX 1E</b>	Turn right - follow D15 IBA Arc - intcp R004 IBA - GODOX.	R284 IBA MNM 5000 R353 IBA MNM 6000
<b>XOSTA 1E</b>	Turn right - follow D15 IBA Arc - intcp R299 IBA - XOSTA.	R284 IBA MNM 5000

© Navitech - leib04daorg0

Change: Completely revised

**THIS CHART IS A PART OF NAVIGRAPH NDAC AND IS INTENDED FOR FLIGHT SIMULATION USE ONLY**

Ibiza APP	TWR	GND	ATIS
134.825	118.5	121.925	119.8

TL ATC AD Elev 24

- 5 Traffic arriving from LEPA
- 6 Traffic arriving from Z/UZ-174
- 7 Traffic arriving from A-33, UM-603
- 8 Traffic arriving from LEMH
- 9 Traffic arriving from A-6, A-27, UL-129, UN-850, UN-855, Z/UZ-167
- 10 Traffic arriving from T-250
- 11 Traffic arriving from B-46, UN-851
- 12 Traffic arriving from A-6, G-30, UN-129, UN-856
- 13 Traffic arriving from LEBL
- 14 Traffic arriving from Z-224, UZ-224

**3 VARUT 1V**  
VARU1V

**VARUT**  
R286/D33.6 IBA  
N39 01.3  
E000 40.5

**LASDI**  
R286/D15 IBA  
N38 56.3  
E001 03.5

**IBIZA IBA**  
N38 52.1  
E001 22.0

**RUXET 1V**  
R250/D34.6 IBA  
N38 40.1  
E000 40.5

**RUXET**  
R250/D34.6 IBA  
N38 40.1  
E000 40.5

**SURIB 2V**  
R140/D40.8 IBA  
N38 20.5  
E001 55.0

**SURIB**  
R140/D40.8 IBA  
N38 20.5  
E001 55.0

**MOLAR**  
R226/D75.9 MJV  
N38 33.0  
E001 35.9

**SURIB**  
R140/D40.8 IBA  
N38 20.5  
E001 55.0

**TOLSO**  
R345/D66 MJV  
N40 30.0  
E002 23.6

**TOLSO 2V**  
R345/D66 MJV  
N40 30.0  
E002 23.6

**CORDA**  
R339/D63.2 MJV  
N40 24.9  
E002 15.4

**CORDA 2V**  
R339/D63.2 MJV  
N40 24.9  
E002 15.4

**Palma de Mallorca LEPA**  
N39 33.0  
E002 23.8

**Andraitx**  
384 ADX  
N39 33.0  
E002 23.8

**Palma**  
D113.3 MJV  
N39 26.1  
E002 45.5

**BAKAX**  
R057/D64.7 MJV  
N39 27.3  
E002 31.8

**BAKAX 1V**  
R057/D64.7 MJV  
N39 27.3  
E002 31.8

**CASOL 1V**  
R165/D15 MJV  
N39 11.6  
E002 50.5

**CASOL**  
R165/D15 MJV  
N39 11.6  
E002 50.5

**NEVIC 1V**  
R229/D48.4 MJV  
N39 19.9  
E003 25.9

**NEVIC**  
R229/D48.4 MJV  
N39 19.9  
E003 25.9

**Warning**  
Do not proceed beyond IAF (applicable) without ATC CLR.

**LISAS**  
R345/D47.6 MJV  
N40 12.1  
E002 29.8

**Pollensa**  
D116.4 POS  
N39 55.7  
E003 06.9

**Capdepera**  
D112.9 CDP  
N39 41.9  
E003 26.1

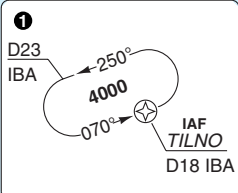
**MORSS 2V**  
MORS2V

**MORSS**  
D21.5 MHN  
N39 57.4  
E004 40.0

**Menorca**  
D112.6 MHN  
N39 51.8  
E004 13.0

**R115 Cabrera**  
3500ft GND

**SPEED**  
MAX 250kt below FL100.  
Reduce to 210kt when vectored to intercept LOC.  
At 12nm from THR reduce to 160kt and maintain until 5nm from THR.



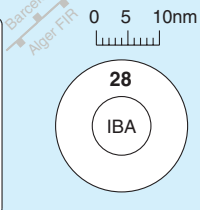
**2 BAKAX 1V:** Possible loss of signal below FL80. RADAR assistance required

**4 BRNAV approval required**

**RIXOT**  
MAX FL230  
D70.4 CDP  
N40 23.5  
E004 40.0

**RIXOT 2V**  
R195/1000  
N40 23.5  
E004 40.0

**MORSS 2V**  
MORS2V



STAR RWY 06

W/E 03 MAY 12

40 - 1 04 APR 12

Spain - LEIB / IBZ  
IBIZA

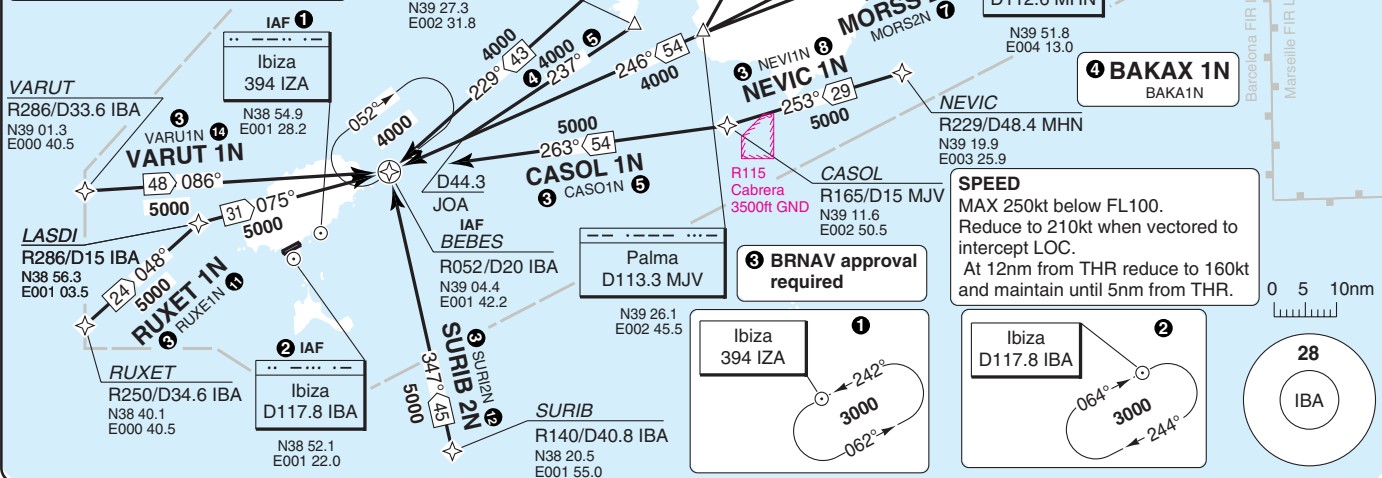
THIS CHART IS A PART OF NAVIGRAPH NDAC AND IS INTENDED FOR FLIGHT SIMULATION USE ONLY

Change: Completely revised

Ibiza APP	TWR	GND	ATIS
134.825	118.5	121.925	119.8

TL	ATC	AD Elev	24
----	-----	---------	----

- 5 Traffic arriving from LEPA
- 7 Traffic arriving from Z/UZ-174
- 6 Traffic arriving from A-33, UM-603
- 8 Traffic arriving from LEMH
- 9 Traffic arriving from A-6, A-27, UL-129, UN-850, UN-855, Z/UZ-167
- 10 Traffic arriving from T-250
- 11 Traffic arriving from B-46, UN-851
- 12 Traffic arriving from A-6, G-30, UN-129, UN-856
- 13 Traffic arriving from LEBL
- 14 Traffic arriving from Z-224, UZ-224



Ibiza APP	TWR	GND	ATIS
134.825	118.5	121.925	119.8

TL ATC AD Elev 24

ATC authorization required

Available W: 21-05, S: 22-23 PPR

**Warning**  
Do not proceed beyond IAF (applicable) without ATC CLR.

**1** BRNAV approval required

*VARUT*  
39.8nm to THR  
N39 01.3  
E000 40.5

*LASDI*  
28.6nm to THR  
N38 56.3  
E001 03.5

36.1nm to THR  
Ibiza  
D117.8 IBA  
N38 52.1  
E001 22.0

109.4nm to THR  
Palma  
D113.3 MJV  
N39 26.1  
E002 45.5

181.7nm to THR  
Menorca  
D112.6 MHN  
N39 51.8  
E004 13.0

144.5nm to THR  
Capdepera  
D112.9 CDP  
N39 41.9  
E003 26.1

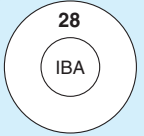
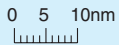
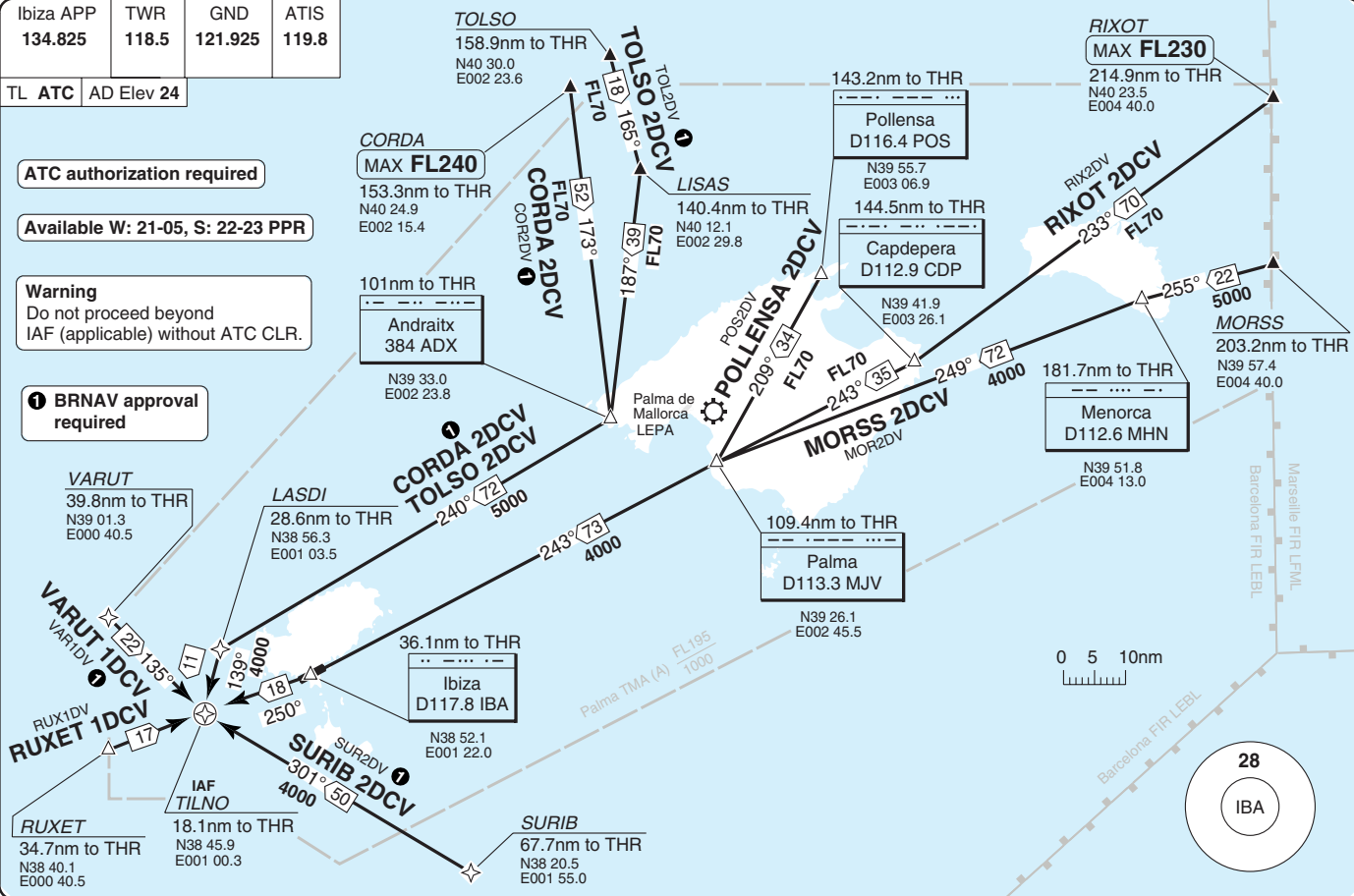
143.2nm to THR  
Pollensa  
D116.4 POS  
N39 55.7  
E003 06.9

*CORDA*  
MAX FL240  
153.3nm to THR  
N40 24.9  
E002 15.4

*TOLSO*  
158.9nm to THR  
N40 30.0  
E002 23.6

*RIXOT*  
MAX FL230  
214.9nm to THR  
N40 23.5  
E004 40.0

*MORSS*  
203.2nm to THR  
N39 57.4  
E004 40.0



THIS CHART IS A PART OF NAVIGRAPH NDAC AND IS INTENDED FOR FLIGHT SIMULATION USE ONLY

Change: Completely revised

STAR RWY 06 CDA

W/E 03 MAY 12

40 - 3 | 04 APR 12

Spain - LEIB / IBZ

Ibiza APP	TWR	GND	ATIS
134.825	118.5	121.925	119.8

TL ATC AD Elev 24

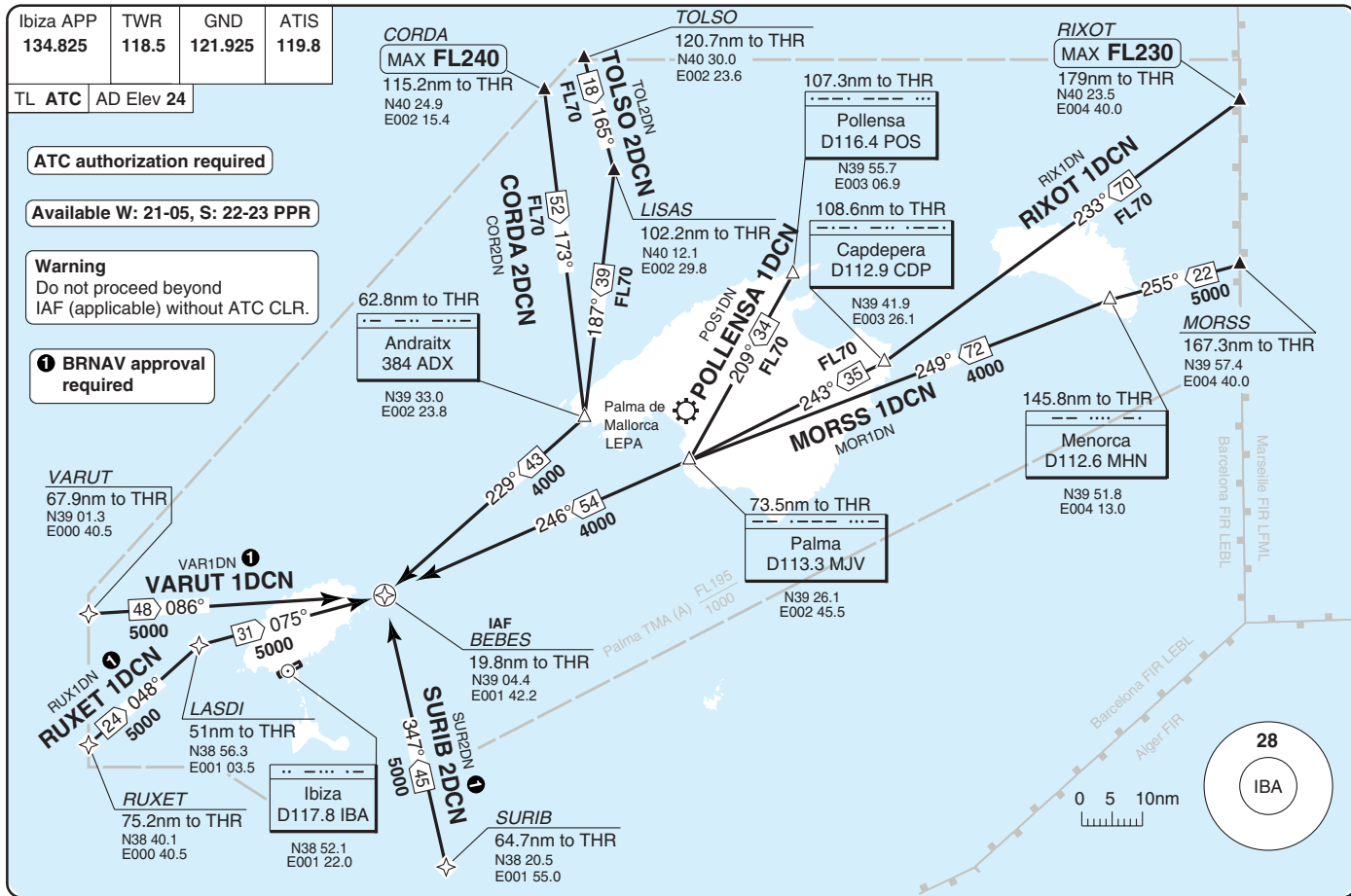
ATC authorization required

Available W: 21-05, S: 22-23 PPR

**Warning**

Do not proceed beyond IAF (applicable) without ATC CLR.

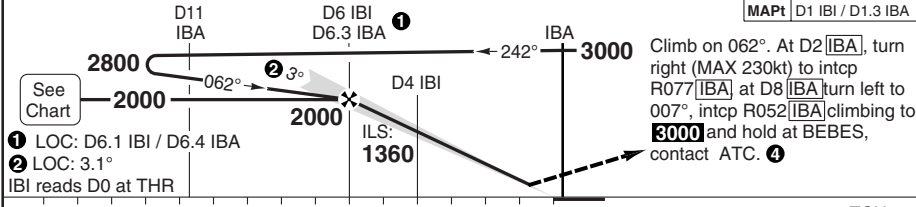
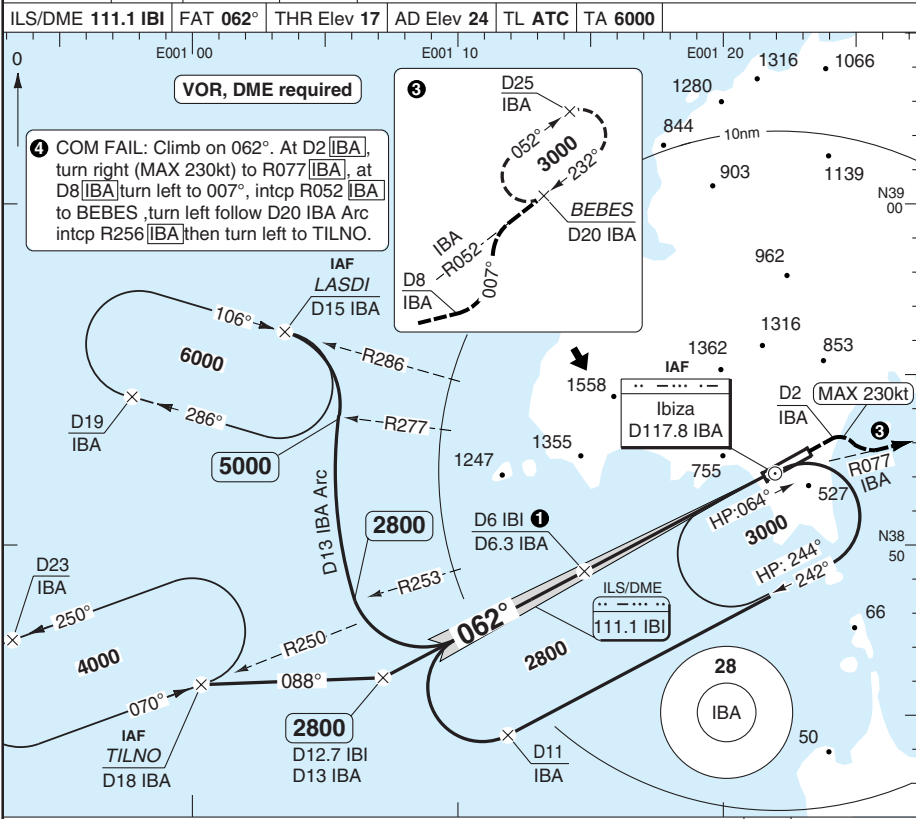
**1** BRNAV approval required



ILS RWY 06

IBIZA

Ibiza APP <b>134.825</b>	TWR <b>118.5</b>	GND <b>121.925</b>	ATIS <b>119.8</b>
ILS/DME <b>111.1 IBI</b>		FAT <b>062°</b>	THR Elev <b>17</b>
AD Elev <b>24</b>		TL ATC	TA <b>6000</b>



ACFT	ILS+DME	LOC+DME	Circling a	DME IBA	3.0° ALT	DME IBI	3.0° ALT	LDA 2800x45 9186x147ft P 3°/L/R (57)
A	240 (222) 1000m	510 (500) 1500m	1000 (970) 1.5km	6	1880	6	1980	
B	260 (234) 1000m		1000 (970) 1.6km	5	1560	5	1690	
C	260 (242) 1000m	510 (500) 2100m	1100 (1070) 2.4km	4	1240	4	1360	
D	270 (253) 1100m		1210 (1180) 3.6km	3	920	3	1040	
				2	600	2	710	
GS	80	100	120	140	160			
ROD 3.0°	430	520	640	750	850			
FAF-MAPt	3:48	3:03	2:32	2:10	1:54			

© Navtech - leib01aip00

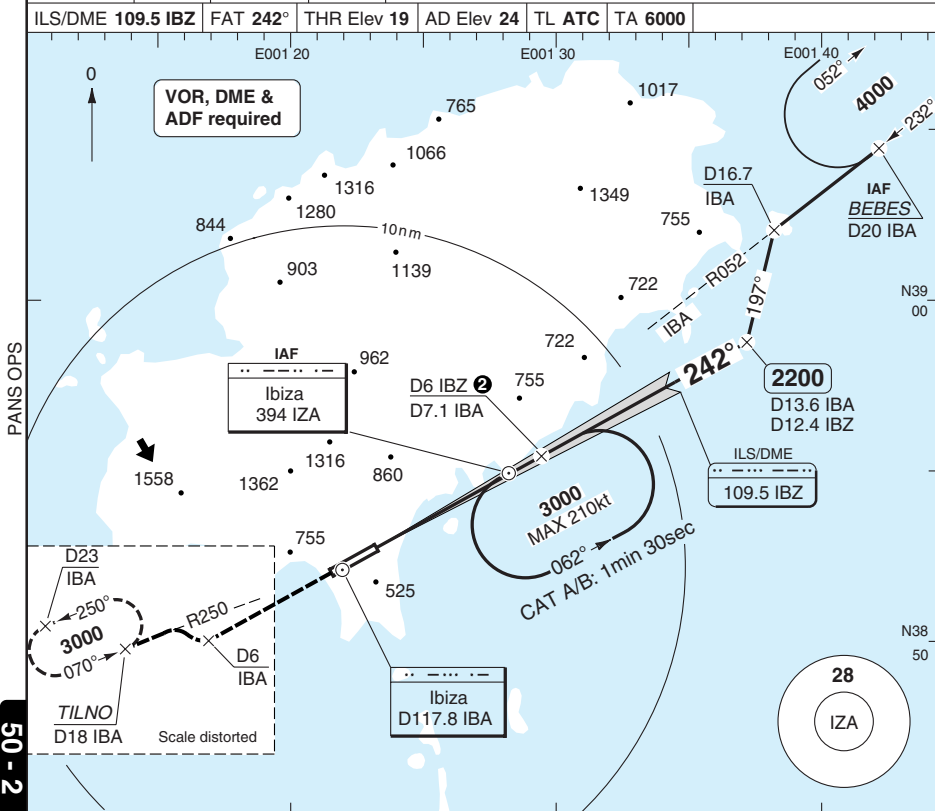
50 - 1

BALS

# ILS RWY 24

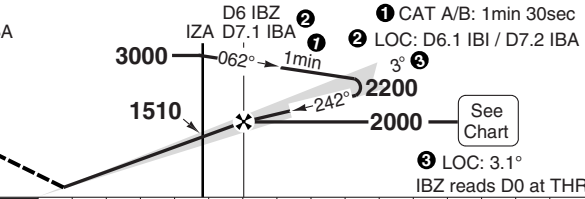
# IBIZA

Ibiza APP <b>134.825</b>	TWR <b>118.5</b>	GND <b>121.925</b>	ATIS <b>119.8</b>
ILS/DME <b>109.5 IBZ</b>	FAT <b>242°</b>	THR Elev <b>19</b>	AD Elev <b>24</b>
TL <b>ATC</b>	TA <b>6000</b>		



50 - 2

**MAPt** D0.6 IBZ  
 Climb on 242°. At D6 [IBA], turn right IBA to intcp R250 [IBA] climbing to **3000** and hold at TILNO, contact ATC.  
 COM FAIL: Climb on 242° to D6 [IBA], turn right to intcp R250 [IBA] to TILNO, turn right to intcp and follow D20 [IBA] Arc to BEBES.



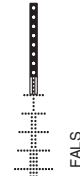
TCH 50

ACFT	ILS+DME	LOC+DME	Circling <sup>a</sup>
A	<b>310</b> (283) 650m	<b>850</b> (840)	<b>1100</b> (1070) 1.5km
B	<b>320</b> (295) 650m	1500m	<b>1100</b> (1070) 1.6km
C	<b>330</b> (303) 700m	<b>850</b> (840)	<b>1200</b> (1170) 2.4km
D	<b>340</b> (314) 700m	2400m	<b>1460</b> (1430) 3.6km

<sup>a</sup> Circling prohibited in sector 250° clockwise to 052°.

DME IBZ	3.0° ALT	LDA 2800x45
6	<b>1980</b>	9186x147ft
5	<b>1670</b>	P 3° L/R (60)
4	<b>1350</b>	
3	<b>1030</b>	
2	<b>710</b>	

GS	80	100	120	140	160
ROD 3.0°	420	530	640	740	850
FAF-MAPt	4:04	3:15	2:43	2:19	2:02



© Navitech - leib02iaip00

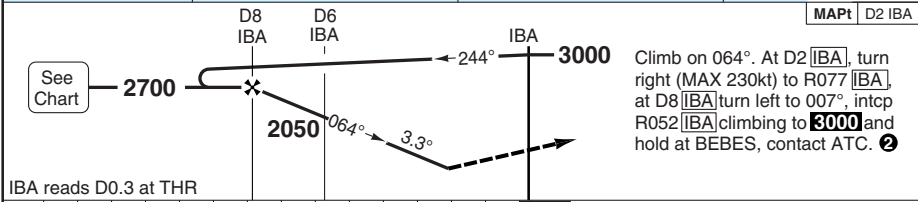
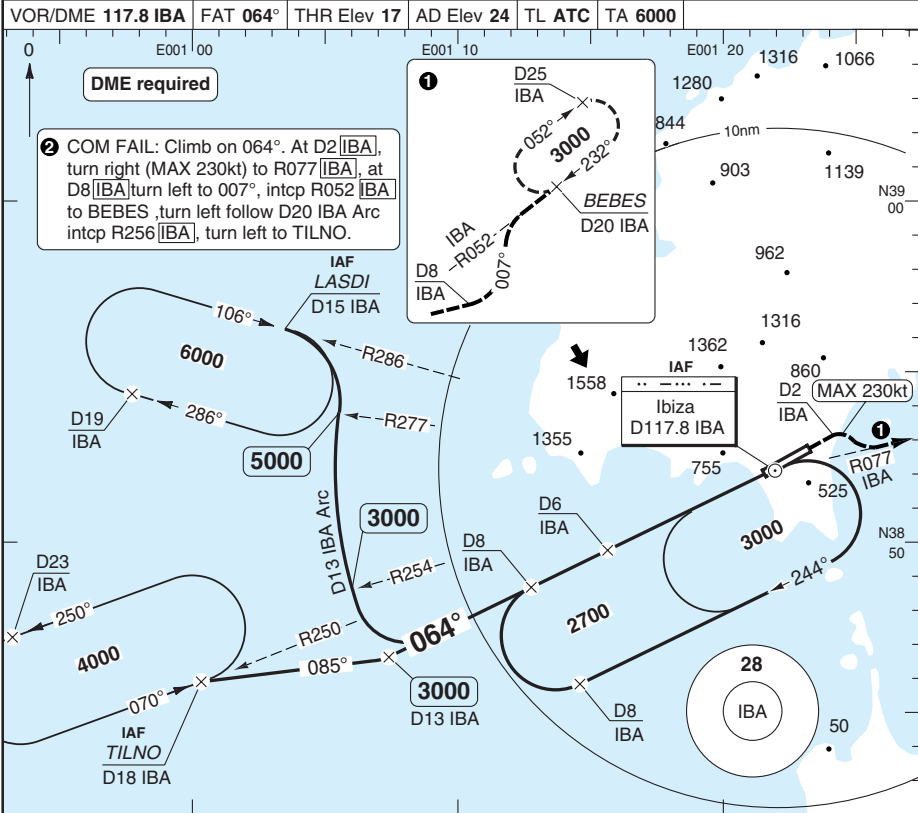
Change: Completely revised

**THIS CHART IS A PART OF NAVIGRAPH NDAC AND IS INTENDED FOR FLIGHT SIMULATION USE ONLY**

# VOR RWY 06

# IBIZA

Ibiza APP <b>134.825</b>	TWR <b>118.5</b>	GND <b>121.925</b>	ATIS <b>119.8</b>
VOR/DME <b>117.8 IBA</b>		FAT <b>064°</b>	THR Elev <b>17</b>
AD Elev <b>24</b>		TL <b>ATC</b>	TA <b>6000</b>



IBA reads D0.3 at THR

ACFT	VOR+DME	Circling <b>ⓐ</b>	<b>ⓐ</b> Circling prohibited in sector 250° clockwise to 052°.	DME IBA	3.3° ALT	LDA 2800x45 9186x147ft P 3°L/R (57)
A	<b>810</b> (800)	<b>1200</b> (1170) 1.5km		7	<b>2400</b>	
B	1500m	<b>1370</b> (1340) 1.6km		6	<b>2050</b>	
C	<b>810</b> (800)	<b>1880</b> (1850) 2.4km		5	<b>1700</b>	
D	2400m	<b>2130</b> (2100) 3.6km		4	<b>1350</b>	
				3	<b>1000</b>	

GS	80	100	120	140	160
ROD 3.3°	470	580	700	820	930
FAF-MAPt	4:30	3:36	3:00	2:34	2:15

BALS 300

© Navtech - leib03iaip00

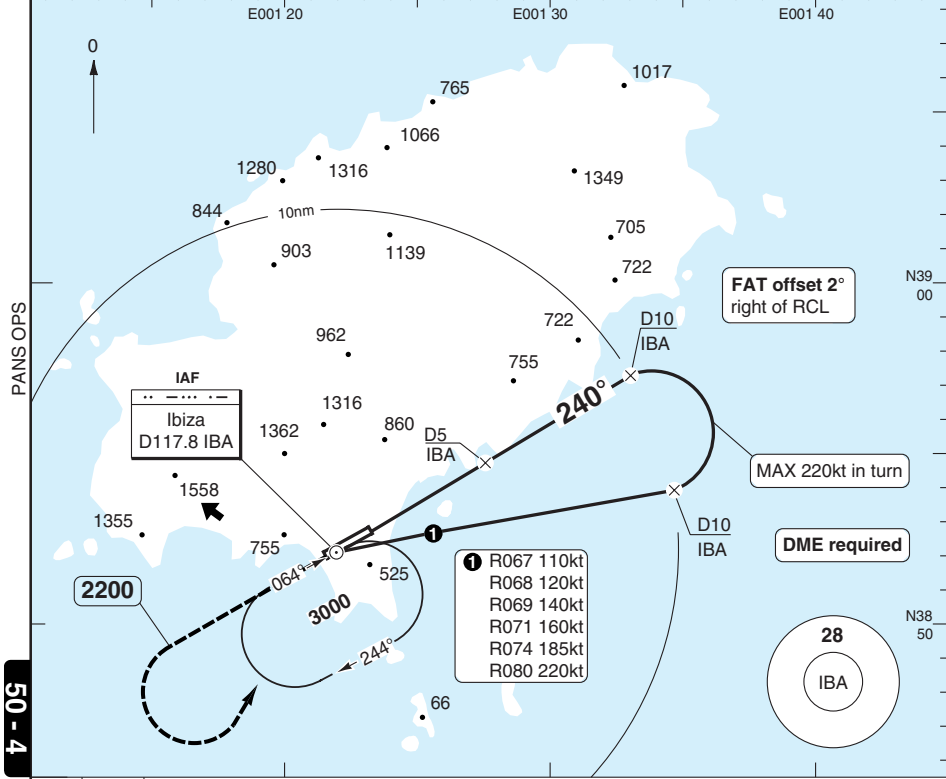
50 - 3

# VOR RWY 24 Y

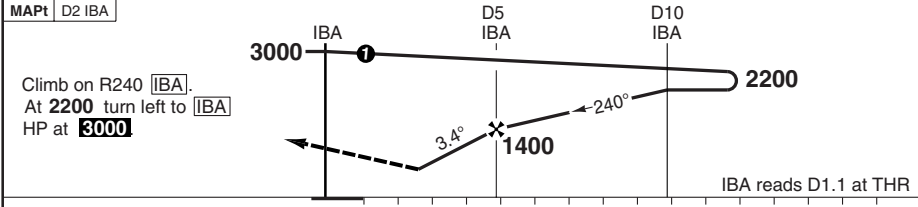
# IBIZA

Ibiza APP <b>134.825</b> 118.125 CS Palma	TWR <b>118.5</b>	GND <b>121.925</b>	ATIS <b>119.8</b>
---	---------------------	-----------------------	----------------------

VOR/DME <b>117.8 IBA</b>	FAT <b>240°</b>	THR Elev <b>20</b>	AD Elev <b>24</b>	TL <b>ATC</b>	TA <b>6000</b>
--------------------------	-----------------	--------------------	-------------------	---------------	----------------



50 - 4



ACFT	<b>VOR+DME</b>	<b>Circling <sup>a</sup></b>	<sup>a</sup> Circling prohibited in sector 250° clockwise to 052°.	DME IBA	3.4° ALT	LDA 2800x45 9186x147ft P 3°
A	<b>680</b> (670) 1500m	<b>930</b> (900) 1.5km		4	<b>1090</b>	
B		<b>930</b> (900) 1.6km		3	<b>730</b>	
C	<b>680</b> (670) 2400m	<b>1030</b> (1000) 2.4km				
D		<b>1260</b> (1230) 3.6km				
GS	80	100	120	140	160	
ROD 3.4°	480	600	720	840	960	
FAF-MAPt	2:15	1:48	1:30	1:17	1:08	

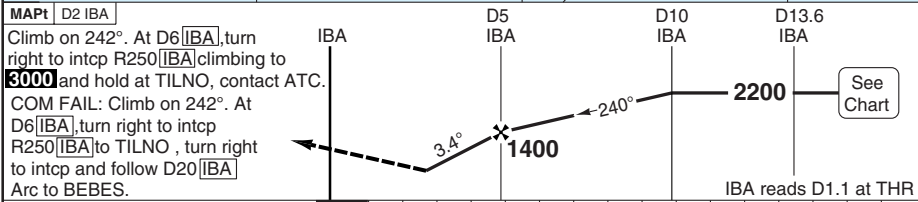
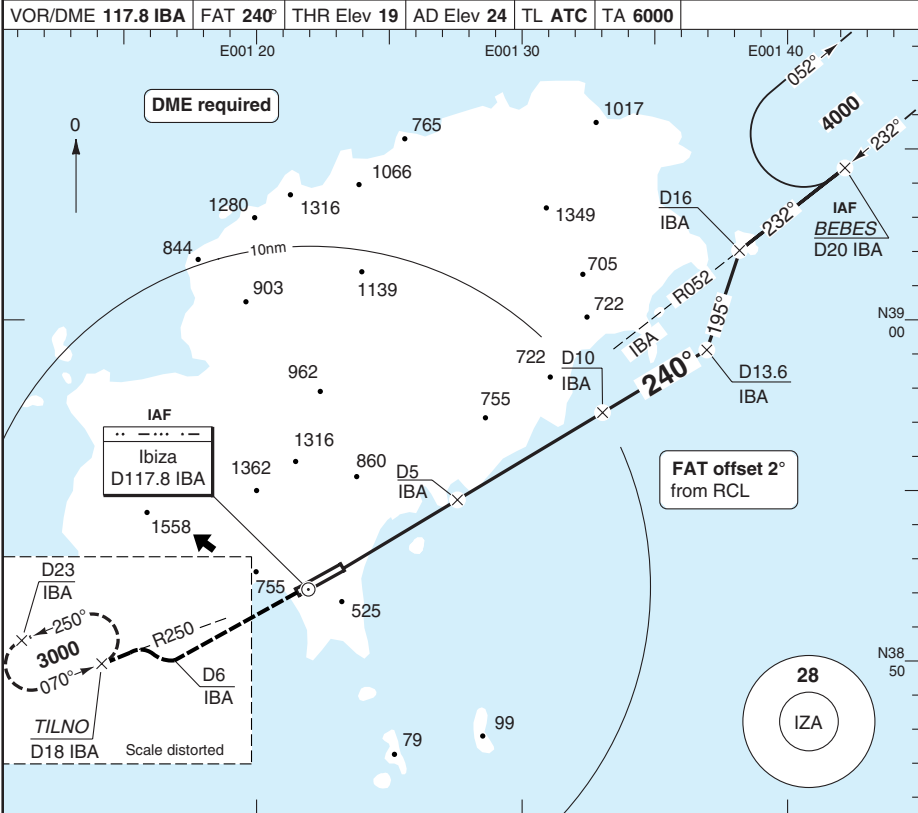
© Navtech - leib04iarp00

Change: Minima

VOR RWY 24 Z

IBIZA

Ibiza APP <b>134.825</b> 118.125 CS Palma	TWR <b>118.5</b>	GND <b>121.925</b>	ATIS <b>119.8</b>
VOR/DME <b>117.8 IBA</b>   FAT <b>240°</b>   THR Elev <b>19</b>   AD Elev <b>24</b>   TL <b>ATC</b>   TA <b>6000</b>			



MAPt D2 IBA	Climb on 242°. At D6 IBA, turn right to intcp R250 IBA climbing to 3000 and hold at TILNO, contact ATC. COM FAIL: Climb on 242°. At D6 IBA, turn right to intcp R250 IBA to TILNO, turn right to intcp and follow D20 IBA Arc to BEBES.				IBA reads D1.1 at THR		
ACFT	VOR+DME	Circling <b>a</b>		<b>a</b> Circling prohibited in sector 250° clockwise to 052°.		DME IBA ALT	LDA 2800x45 9186x147ft P 3°L/R (60)
A	680 (670)	930 (900)	1.5km	4	1090		FALS
B	1500m	930 (900)	1.6km	3	730		
C	680 (670)	1030 (1000)	2.4km				
D	2400m	1260 (1230)	3.6km				
GS	80	100	120	140	160		
ROD 3.4°	480	600	720	840	960		
FAF-MAPt	2:15	1:48	1:30	1:17	1:08		

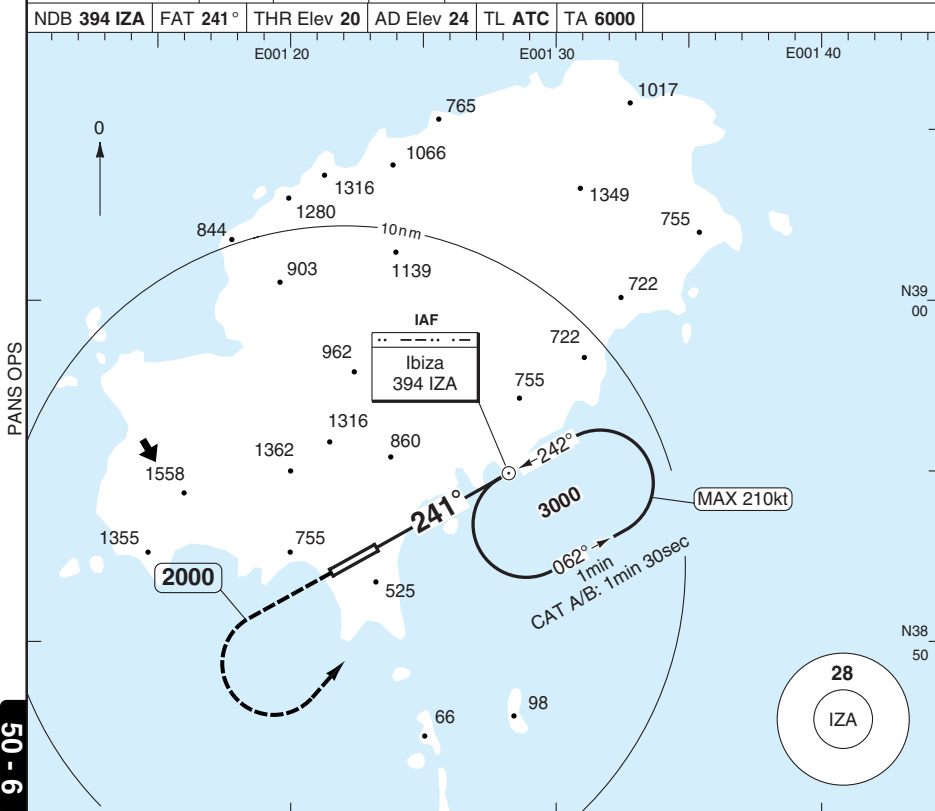
© Navitech - leib05iaip00

50 - 5

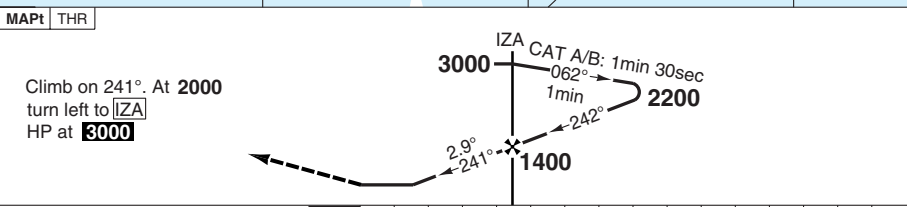
# NDB RWY 24

# IBIZA

Ibiza APP <b>134.825</b> 118.125 CS Palma	TWR <b>118.5</b>	GND <b>121.925</b>	ATIS <b>119.8</b>
NDB <b>394 IZA</b>		FAT <b>241°</b>	THR Elev <b>20</b>
AD Elev <b>24</b>		TL <b>ATC</b>	TA <b>6000</b>



50 - 6



ACFT	NDB	Circling <sup>a</sup>	GS	80	100	120	140	160	LDA 2800x45 9186x147ft P 3°
A	1070 (1060)	1140 (1110) 1.5km	ROD 2.9°	410	520	620	720	820	
B	1500m	1180 (1150) 1.6km	FAF +20s	1270	1240	1210	1170	1140	
C	1070 (1060)	1280 (1250) 2.4km	+40s	1130	1070	1010	-	-	
D	2400m	1520 (1490) 3.6km	+60s	1000	-	-	-	-	
			FAF-MAPt	3:21	2:41	2:14	1:55	1:41	

<sup>a</sup> Circling prohibited in sector 250° clockwise to 052°.

© Navtech - leib06iarp00

# JAR-OPS Landing Minima

# IBIZA

The following Minima is for Public Transport aircraft and conforms to JAR-OPS1 regulations.

STRAIGHT-IN APPROACH		C				D			
R/W	Procedure	DA/ MDA QNH ft	DH/ MDH QFE ft	RVR m	RVR No ALS m	DA/ MDA QNH ft	DH/ MDH QFE ft	RVR m	RVR No ALS m
06	ILS/DME	260	250	800	1000	270	260	900	1200
06	LOC/DME	520	500	1800	2000	520	500	2000	2000
06	VOR/DME	820	800	2000	2000	820	800	2000	2000
24	ILS/DME	310	290	650	1200	320	300	650	1200
24	LOC/DME	860	840	1400	2000	860	840	1800	2000
24	VOR/DME Y, Z (1)	690	660	1400	2000	690	660	1800	2000
24	NDB (1)	1080	1050	1400	2000	1080	1050	1800	2000

Notes:

(1) Procedure based on aerodrome elevation.

CIRCLING		C			D		
R/W	Procedure	MDA QNH ft	MDH QFE ft	Vis m	MDA QNH ft	MDH QFE ft	Vis m
06	ILS/LOC (1)	1100	1070	2400	1210	1180	3600
06	VOR/DME (1)	1880	1850	2400	2130	2100	3600
24	ILS/LOC (1)	1200	1170	2400	1460	1430	3600
24	VOR/DME Y, Z (1)	1030	1000	2400	1260	1230	3600
24	NDB (1)	1240	1210	2400	1520	1490	3600

Notes:

(1) Circling prohibited in sector 251° clockwise to 053°.

TAKE-OFF		C	D
Runway	Facilities	m	m
	RCLL(H)+REDL(H)+Multi RVR (1)	-	-
	RCLL+REDL+Multi RVR	-	-
06, 24	RCLL+REDL	200	250
06, 24	RCL and/or REDL (2)	250	300
All	Nil (Day only)	500	500

Notes:

(1) Subject to Approval.

(2) For night operations, at least runway edge and end lights required.

# JAR-OPS Landing Minima

# IBIZA

The following Minima is for Public Transport aircraft and conforms to JAR-OPS1 regulations.

STRAIGHT-IN APPROACH		A				B			
R/W	Procedure	DA/ MDA QNH ft	DH/ MDH QFE ft	RVR m	RVR No ALS m	DA/ MDA QNH ft	DH/ MDH QFE ft	RVR m	RVR No ALS m
06	ILS/DME	240	230	800	1000	260	240	800	1000
06	LOC/DME	520	500	1500	1500	520	500	1500	1500
06	VOR/DME	820	800	1500	1500	820	800	1500	1500
24	ILS/DME	290	270	650	1200	300	280	650	1200
24	LOC/DME	860	840	1200	1500	860	840	1400	1500
24	VOR/DME Y, Z (1)	690	660	1200	1500	690	660	1400	1500
24	NDB (1)	1080	1050	1200	1500	1080	1050	1400	1500

Notes:

(1) Procedure based on aerodrome elevation.

CIRCLING		A			B		
R/W	Procedure	MDA QNH ft	MDH QFE ft	Vis m	MDA QNH ft	MDH QFE ft	Vis m
06	ILS/LOC (1)	1000	970	1500	1000	970	1600
06	VOR/DME (1)	1200	1170	1500	1370	1340	1600
24	ILS/LOC (1)	1100	1070	1500	1100	1070	1600
24	VOR/DME Y, Z (1)	930	900	1500	930	900	1600
24	NDB (1)	1140	1110	1500	1140	1110	1600

Notes:

(1) Circling prohibited in sector 251° clockwise to 053°.

TAKE-OFF		A	B
Runway	Facilities	m	m
	RCLL(H)+REDL(H)+Multi RVR (1)	-	-
	RCLL+REDL+Multi RVR	-	-
06, 24	RCLL+REDL	200	200
06, 24	RCL and/or REDL (2)	250	250
All	Nil (Day only)	500	500

Notes:

(1) Subject to Approval.

(2) For night operations, at least runway edge and end lights required.