

LEGT

Airport information:

Country: Spain

City: MADRID

Coordinates: N 40° 17.7', W 003° 43.4'

Elevation: 2031

Customs:

Fuel: Jet

RFF: CAT 7

hours: 0630-2000

Runways:

Runway 05

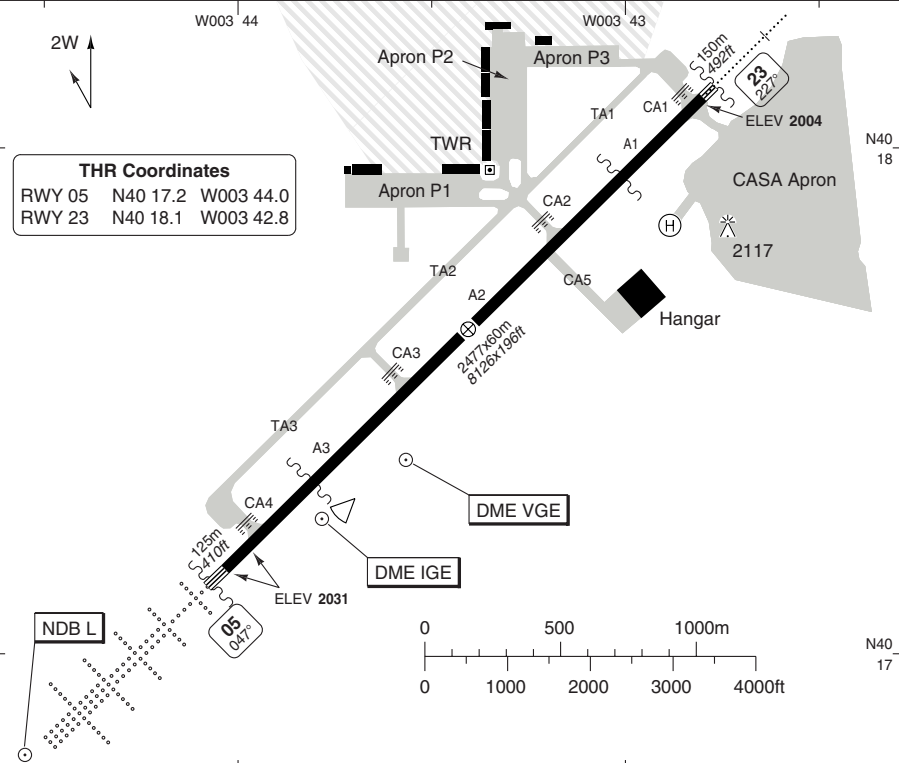
Takeoff length: 2477, Landing length: 2477

Runway 23

Takeoff length: 2477, Landing length: 2477

AERODROME

Getafe GND 121.6			
AD Elev 2031	ARP: N40 17.7 W003 43.4	RF: CAT 7	AD HR: 0630-2000



RWY	Slope	TORA m/ft	LDA m/ft	ALS	REDL	Additional
05	-0.3	2477 / 8126	2477 / 8126	H-C	H ②	P 2.8°L/R (68), REIL
23	+0.3	2477 / 8126	2477 / 8126	H-E ①	H ②	P 3°L/R (65), REIL

① 420m. ② White.

EU OPS		TAKE OFF MINIMA
RWY	Facilities	RVR A B C D
05/23	RCL (day only) or RCL + REDL	400m
	NIL (day only)	500m

GENERAL INFORMATION

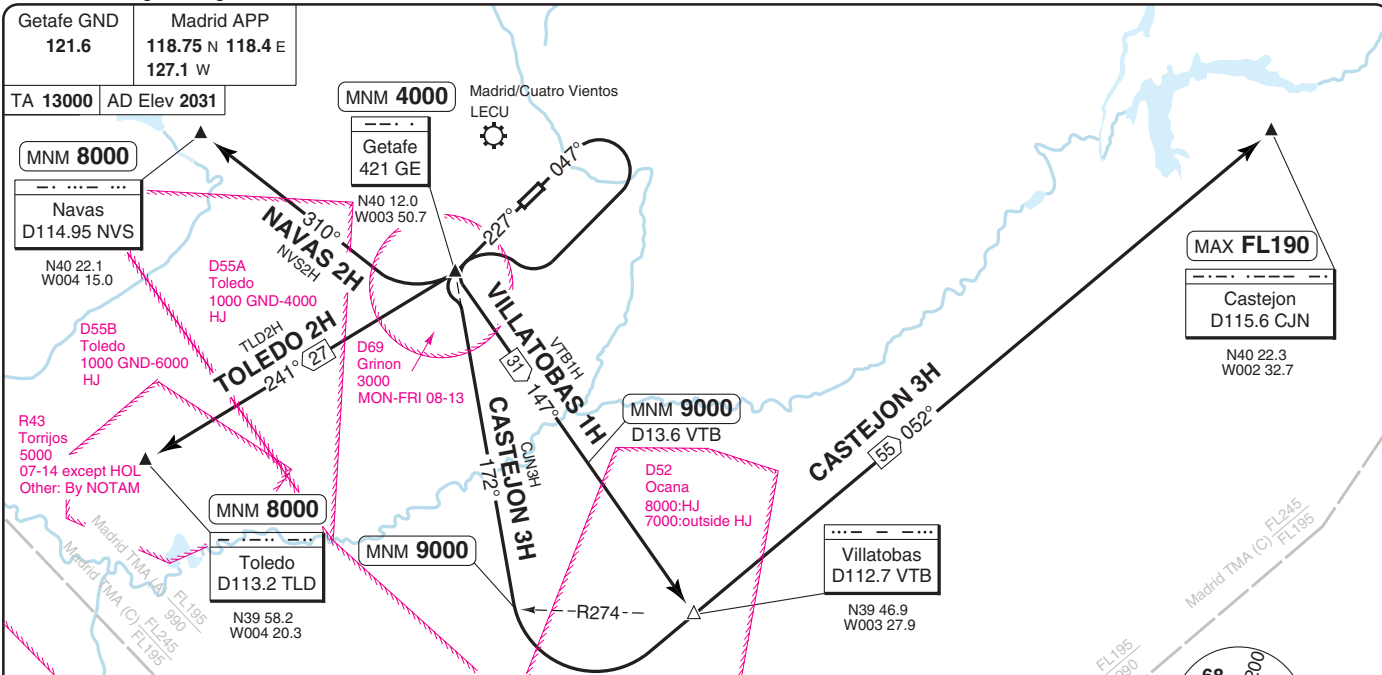
1. CIRCUIT
 COM failure circuit
 ACFT with radio failure shall enter the circuit by NW quadrant with an angle of 45° with reference to RWY 05/23. To check the RWY in use, pilots shall overfly the TWR in parallel to RWY 05/23, keeping always to the left of TWY and BTN the TWY and TWR.

2. TRAFFIC NOTES
 Only military ACFT entering or exiting from Torrejon and Getafe military air base are allowed to carry out visual flights or the ground visibility or up to cloud ceiling, whichever is lower.

THIS CHART IS A PART OF NAVIGRAPH NDAC AND IS INTENDED FOR FLIGHT SIMULATION USE ONLY

Change: New spec.

© Navtech - legt01daorg0



SID	MNM Climb	Routing	Altitudes
INITIAL CLIMB		RWY 05 : Climb on 047° - turn right in circuit - GE	GE MNM 4000
		RWY 23 : Climb on 227° - GE	
CASTEJON 3H	4.6% to 4000	Turn left - 172° from GE - after crossing R274 VTB turn left - VTB - intcp 052°/R232 CJN - CJN.	R274 VTB MNM 9000 CJN MAX FL190
NAVAS 2H	4.6% to 4000	Turn right - intcp 310°/R130 NVS - NVS.	NVS MNM 8000
TOLEDO 2H	4.6% to 7000	Turn right - intcp 241°/R061 TLD - TLD.	TLD MNM 8000
VILLATOBAS 1H	4.6% to 9000	Turn left - intcp 147°/R327 VTB - VTB.	D13.6 VTB MNM 9000

SID CASTEJON 3H, NAVAS 2H, TOLEDO 2H, VILLATOBAS 1H

Getafe MADRID

30 - 1 | 07 MAR 12

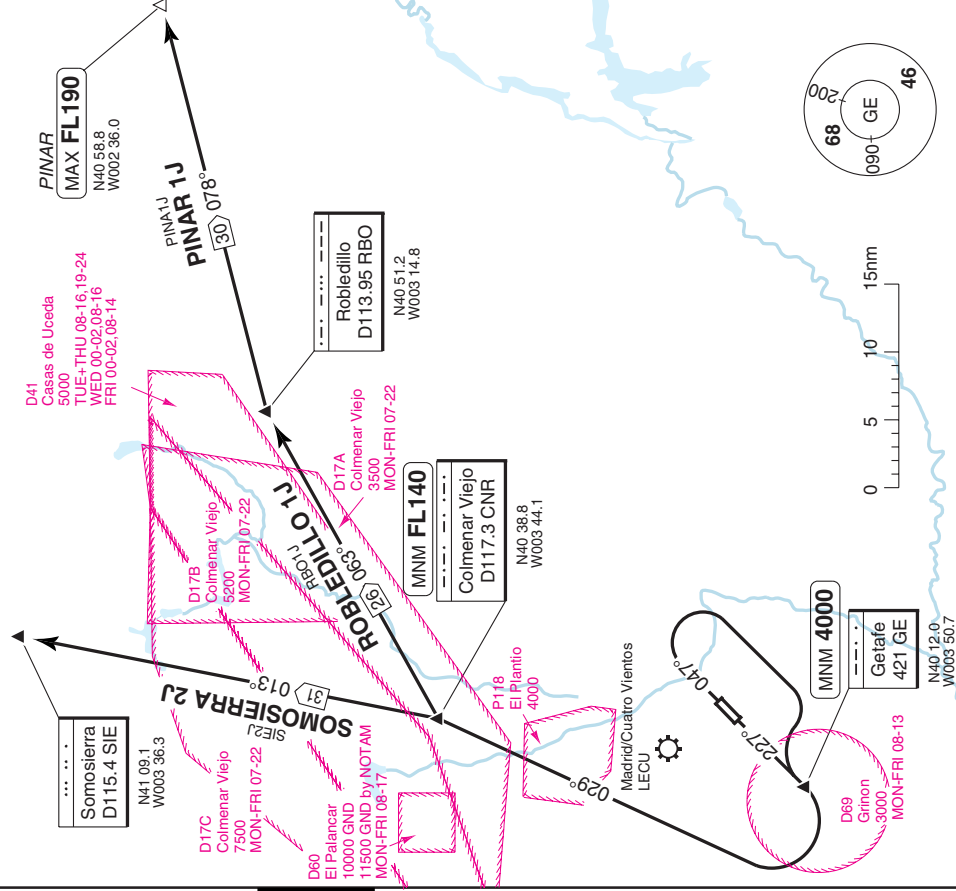
Spain - LEGT

30 - 2 | 07 MAR 12

Spain - LEGT
Getafe **MADRID**

SID PINAR 1J, ROBLEDILLO 1J, SOMOSIERRA 2J

Getafe GND	Madrid APP
121.6	118.75 N 118.4 E
	127.1 W
TA 13000	AD Elev 2031



NOTE: Subject to D60 activity.
 If unable to meet ALT requirements, contact ATC for clearance to cross CNR MNM 8000 and SIE MNM 10000.

MNM CLIMB GRADIENT: 5% to 13000.

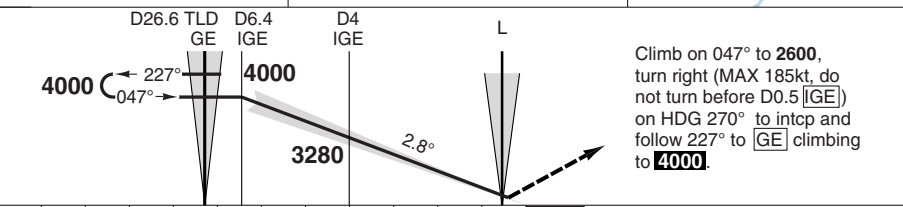
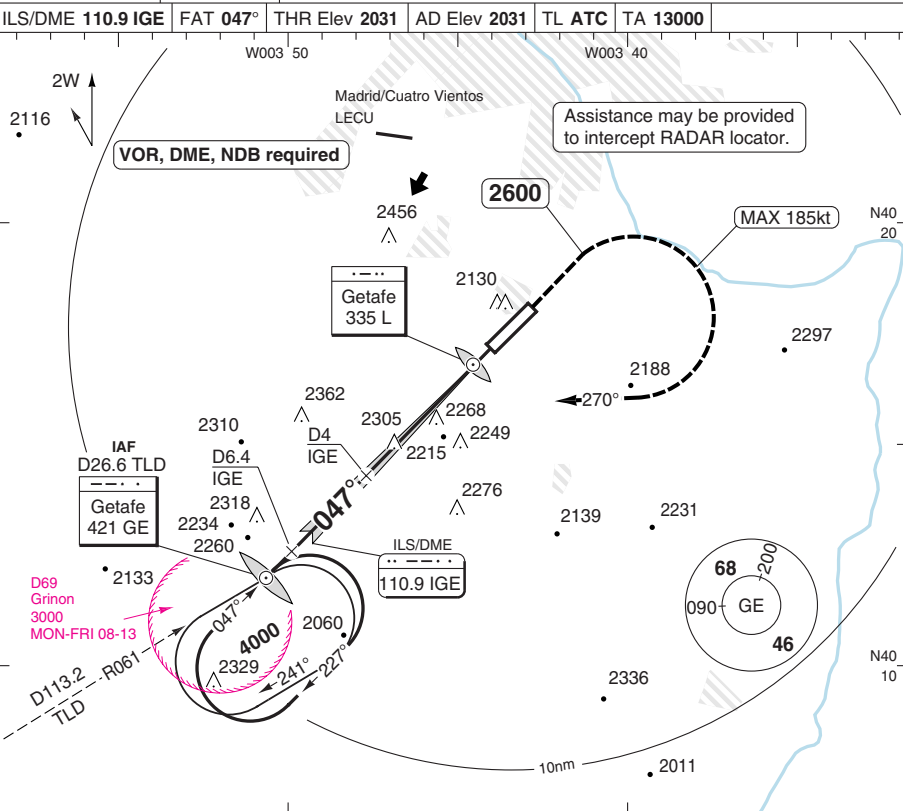
SID	Routeing	Altitudes
(INITIAL CLIMB)	RWY 05: Climb on 047° - turn right in the circuit - GE	GE MNM 4000
	RWY 23: Climb on 227° - GE	
PINAR 1J	Turn right - intcp 029°/R209 CNR - CNR - R063 CNR - RBO - R078 RBO - PNR.	CNR MNM FL140 PINAR MAX FL190
ROBLEDILLO 1J	Turn right - intcp 029°/R209 CNR - CNR - R063 CNR - RBO.	CNR MNM FL140
SOMOSIERRA 2J	Turn right - intcp 029°/R209 CNR - CNR - R013 CNR - SIE.	CNR MNM FL140

Change: New spec.

THIS CHART IS A PART OF NAVIGRAPH NDAC AND IS INTENDED FOR FLIGHT SIMULATION USE ONLY

ILS RWY 05

Madrid APP 118.75 N 118.4 E 127.1 w	Getafe GND 121.6				
ILS/DME 110.9 IGE	FAT 047°	THR Elev 2031	AD Elev 2031	TL ATC	TA 13000



Climb on 047° to **2600**, turn right (MAX 185kt, do not turn before D0.5 IGE) on HDG 270° to intcp and follow 227° to GE climbing to **4000**.

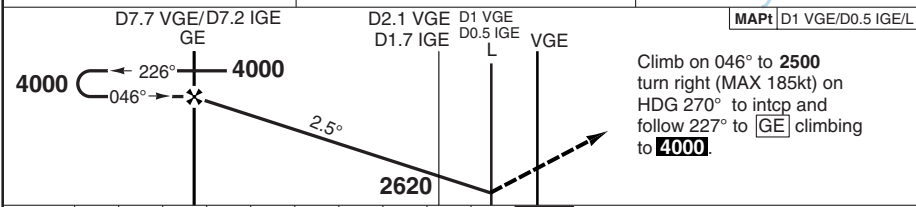
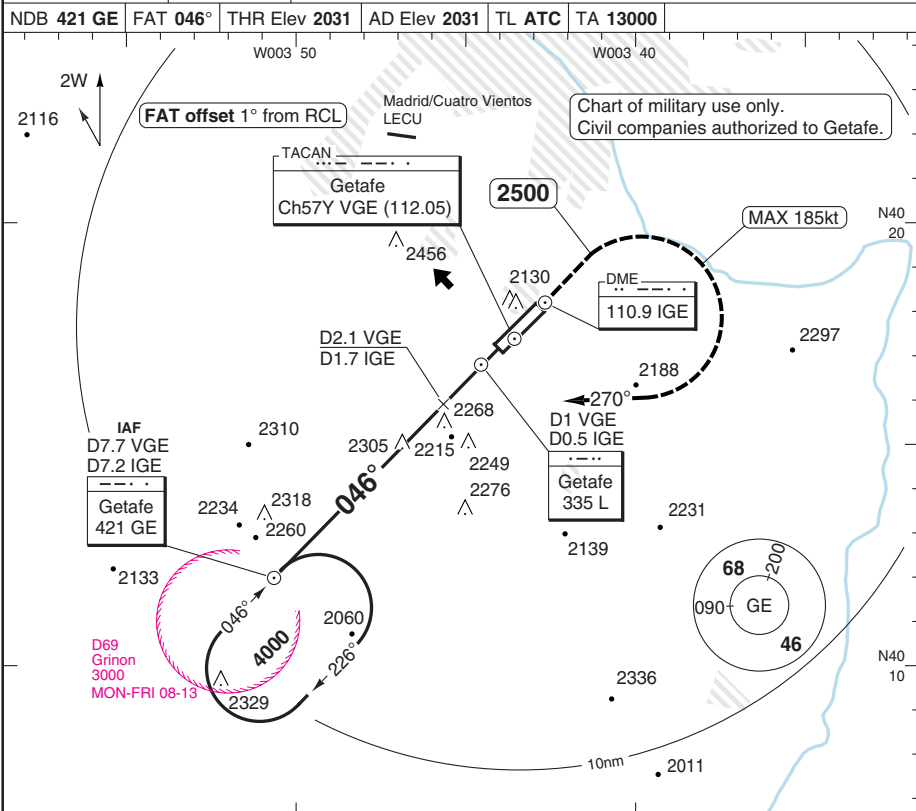
nm	11	10	9	8	7	6	5	4	3	2	1	0	TCH 56
ACFT	ILS+DME		Circling ^a		^a Remain within D5.2 IGE radius.								LDA 2477X60 8126x196ft P 2.8°L/R (68)
A	2250 (210) 550m		2850 (820) 1.5km										
B	2260 (222) 550m		2850 (820) 1.6km										
C	2270 (230) 550m		2950 (920) 2.4km										
D	2280 (241) 550m		2950 (920) 3.6km										

Change: New spec.

THIS CHART IS A PART OF NAVIGRAPH NDAC AND IS INTENDED FOR FLIGHT SIMULATION USE ONLY

NDB RWY 05

Madrid APP 118.75 N 118.4 E 127.1 w	Getafe GND 121.6				
NDB 421 GE	FAT 046°	THR Elev 2031	AD Elev 2031	TL ATC	TA 13000



nm	10	9	8	7	6	5	4	3	2	1	0
ACFT	NDB+DME		2NDB		Circling		DME VGE	3.0° ALT	DME IGE	3.0° ALT	LDA 2477X60 8126x196ft P 2.8°L/R (68)
A	2390 (359)		2620 (589)		2760 (729)		6.5	4000	6.1	4000	<p>FALS Reverse side blank</p>
B	1.6km		1.6km		1.6km		6	3860	5	3670	
C			2620 (589)		2860 (829)		5	3540	4	3350	
D	2390 (359) 2.0km		2620 (589) 2.8km		2860 (829) 3.6km		4	3230	3	3040	
GS	80	100	120	140	160		3	2910	2	2720	
ROD 3.0°	430	530	640	740	850		2	2590	1.0	2390	
FAF-MAPt	5:01	4:01	3:21	2:52	2:31		1.4	2390			

© Navitech - legt03iaip00

Change: New spec.

THIS CHART IS A PART OF NAVIGRAPH NDAC AND IS INTENDED FOR FLIGHT SIMULATION USE ONLY