

Airport information:

Country: Spain

City: BILBAO

Coordinates: N 43° 18.1', W 002° 54.6'

Elevation: 137

Customs: Customs

Fuel: 100LL, Jet A1

RFF: CAT 7

hours: 0545-2230 + 1 HR 45 MIN PPR, 30 MIN before AD closure.

Runways:

Runway 10

Takeoff length: 2000, Landing length: 2000

Runway 12

Takeoff length: 2600, Landing length: 2600

Runway 28

Takeoff length: 2000, Landing length: 2000

Runway 30

Takeoff length: 2600, Landing length: 2140

Aerodrome Briefing Card

BILBAO

1. GEOGRAPHICAL DATA

The AD is situated 5nm N of the city.
The surrounding terrain is high from SE clockwise to NW. 8nm to the N is the coastline of Bay of Biscay.

2. WEATHER

Mainly good wheather conditions.
The weather is maritime with relatively mild winters. MAX/MNM temperature NOV-APR 14°/8°C and MAY-OCT 23°/16°C. The winds are mainly light, coming from NW DEC-FEB and from the S MAR-NOV. Thunderstorms are rare in the area.

3. TRAFFIC

Open.

4. MISCELLANEOUS

Open.

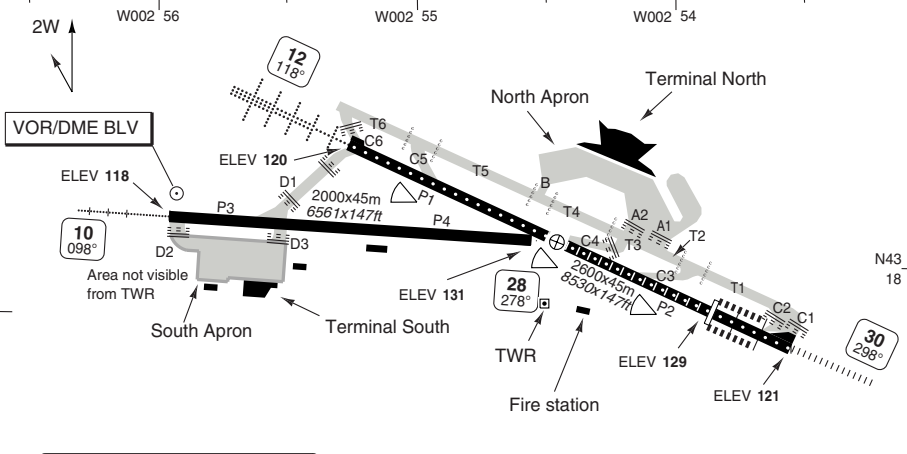
5. REPORTS

Open.

AERODROME

Bilbao GND **121.7** TWR **118.5** ATIS **118.825**

AD Elev **137** ARP: N43 18.1 W002 54.6 RFF: CAT 7 AD HR: **1**



THR Coordinates			
RWY 10	N43 18.2	W002 56.2	
RWY 28	N43 18.1	W002 54.8	
RWY 12	N43 18.4	W002 55.5	
RWY 30	N43 17.9	W002 54.1	

RWY	Slope	TORA m/ft	LDA m/ft	ALS	REDL	RCLL	Additional
10	+0.2	2000 / 6561	2000 / 6561	H-E 2	H 4	-	P 3.6° (46) L/R
28	-0.2	2000 / 6561	2000 / 6561	-	H 4	-	P 3.4° (45) L/R
12	0	2600 / 8530	2600 / 8530	H-C 3	H 4	15m	P 3.1° (55) L/R
30	0	2600 / 8530	2140 / 7020	H-B	H 4	15m	P 3.4° (80) L/R

1 0545-2230 + 1hr 45min PPR 30min before AD CLSD.

2 450m. **3** 560m. **4** White

EU OPS		TAKE OFF MINIMA			
RWY	Facilities	RVR			
		A B C	D		
30	HRCLL + HREDL + Multiple RVR	Ap.O	LVTO	125m	150m
	RCLL + REDL + Multiple RVR		LVTO	150m	200m
	RCLL + REDL		LVTO	200m	250m
	RCL (day only) or RCL + REDL		LVTO	250m	300m
All	RCL (day only) or RCL + REDL			400m	400m
	NIL (day only)			500m	500m

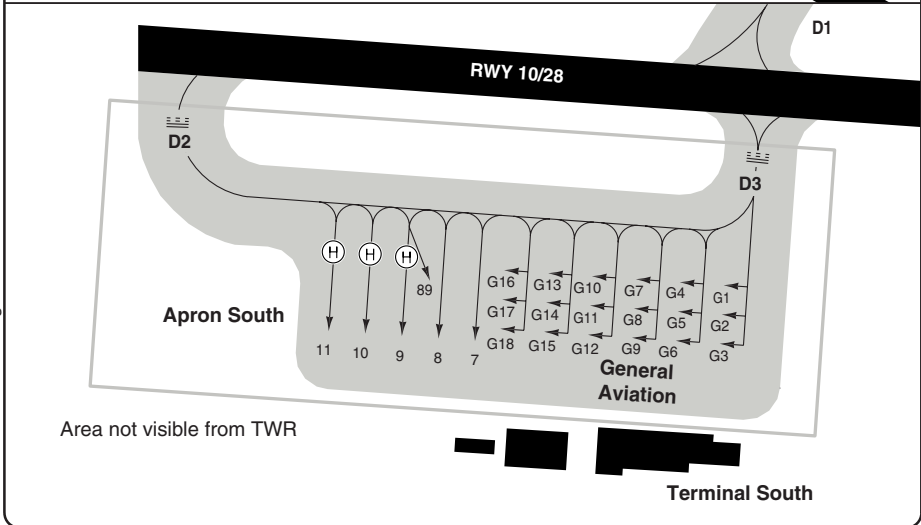
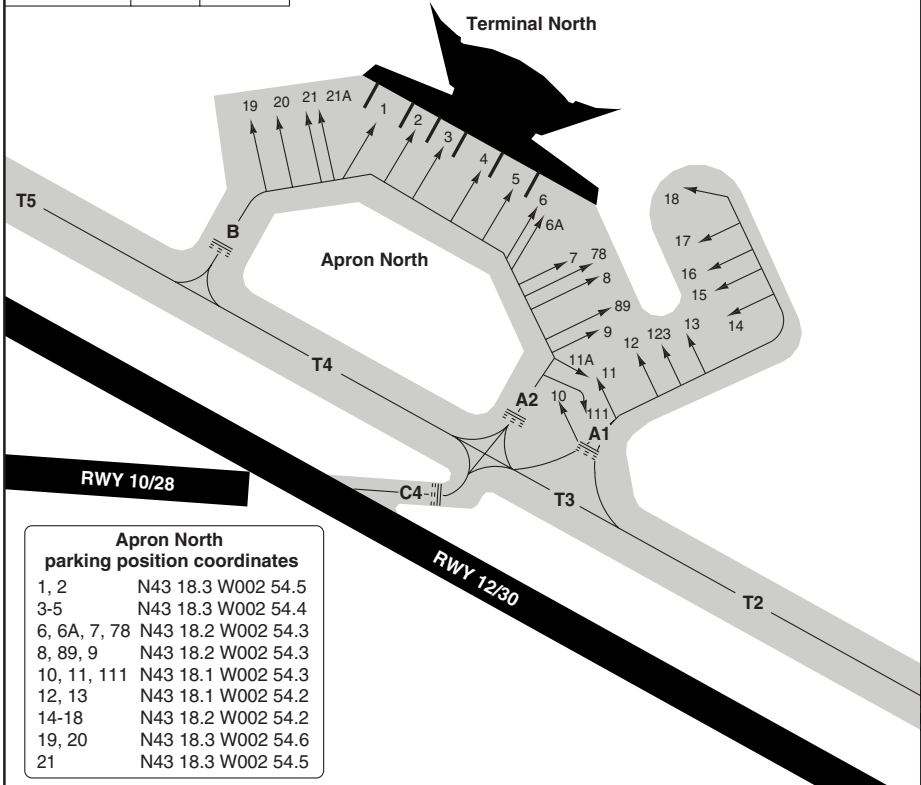
© Navtech - lebb01laorg

Change: Hot spot, RWY 28 THR

THIS CHART IS A PART OF NAVIGRAPH NDAC AND IS INTENDED FOR FLIGHT SIMULATION USE ONLY

AERODROME Parking

Bilbao GND 121.7	TWR 118.5	ATIS 118.825
---------------------	--------------	-----------------



© Navitech - lebb02laorg0

Change: Hot spot, Stands, Renumbered

THIS CHART IS A PART OF NAVIGRAPH NDAC AND IS INTENDED FOR FLIGHT SIMULATION USE ONLY

GROUND

BILBAO

GENERAL INFORMATION

1. WARNING

South Apron is not visible from TWR.

2. TRAFFIC NOTES

RWY 10 and RWY 30 right hand circuit.

3. LOW VISIBILITY PROCEDURES

RWY 30 is usable for TKOF in low visibility conditions.

3.1 ACFT that have already landed:

- Notify RWY vacated and TWY used.
- Wait for taxiing instructions.
- At the apron entry, wait for "Follow Me" vehicle.

3.2 DEPARTURE RWY 30:

From North Apron:

ACFT exit via A1, A2 or B, taxiing along T4, T3 and / or T2, T1 and C1, as appropriate, to RWY 30 holding position. From there, ACFT enter RWY 30 for TKOF.

From South Apron:

ACFT exit via TWY D3 and continue along TWY D1 to RWY 12 holding position. From there, ACFT enter RWY 12 to perform a complete back track to RWY 30.

- In case that departing ACFT must return to the apron, the pilot will inform TWR and wait for new taxiing instructions.

4. SPEED

4.1 Arrivals to Bilbao AD, under radar control, shall adjust their speeds as specified below:

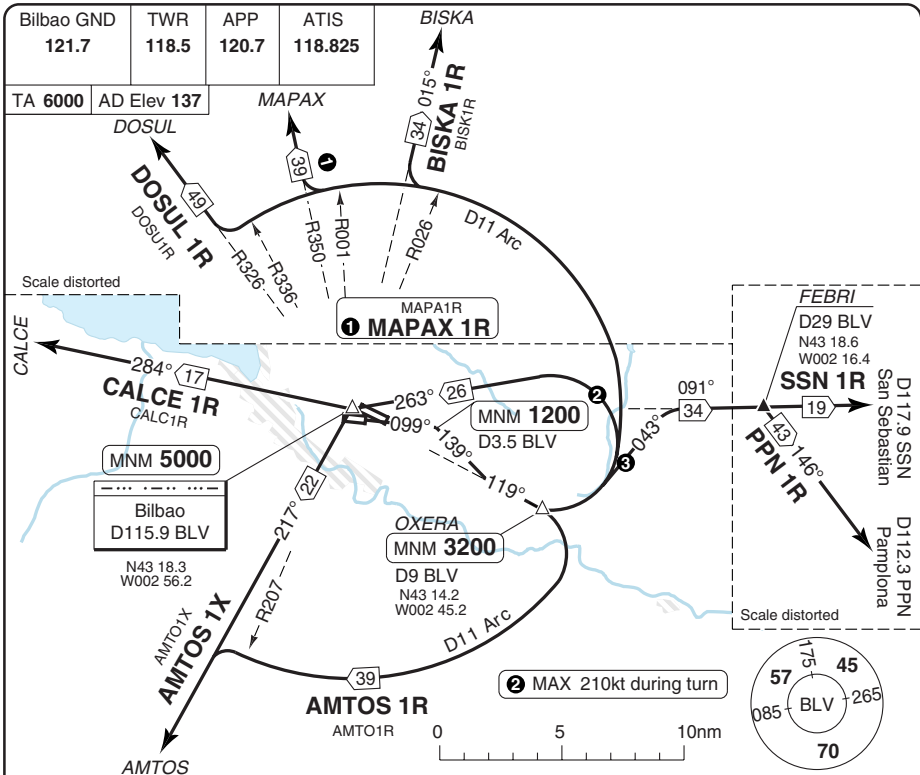
- MAX 250kt at FL120 or below.
- 210kt at the beginning of the final turn to intercept the ILS localizer course.
- 180kt once the final turn is completed and ACFT is established on ILS within 20nm of the landing threshold.
- 160kt when crossing 4nm of the landing threshold.
- ACFT cruising with lower speed than the aforementioned ones shall maintain the cruising speed up to the adjusting fix concerned.

4.2 The MAX speed permitted for departing ACFT is 250kt until leaving FL100.

5. START-UP, PUSH-BACK

- Pilots shall request clearance to start-up, push-back and taxi on GND frequency.
- ACFT must be ready for towed push-back or taxi within the next 5min to the approved start-up time; otherwise pilots will contact ATC.

SID RWY 10



SPEED: MAX 250kt until leaving FL100.
MNM CLIMB GRADIENT: 7% to 3200 (except PPN1R, SSN1R)
 7% to 5000 (PPN1R, SSN1R)

ALT RESTRICTION: Climb to **FL80**, except ATC clearance.

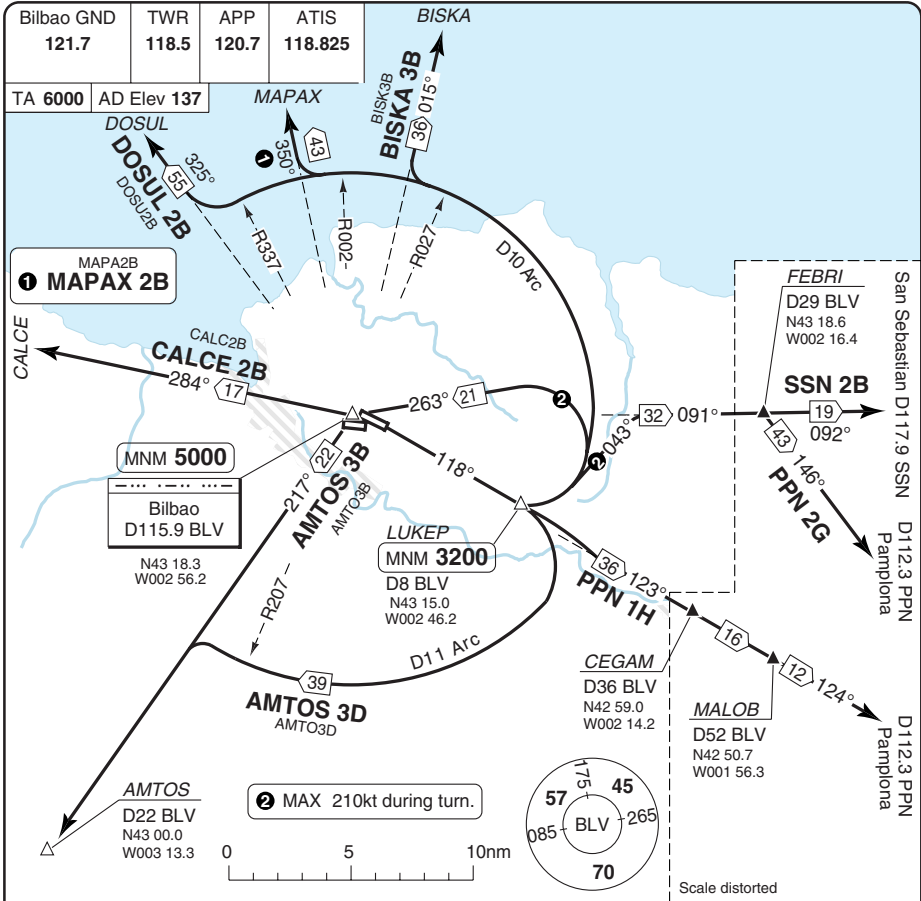
SID	Routing	Altitudes
(INITIAL CLIMB)	Climb on 099° to D3.5 BLV - turn right (AMTOS 1R: MAX 250 kt) - 139° - R119 BLV - OXERA - follow SID.	D3.5 BLV MNM 1200 OXERA MNM 3200
AMTOS 1R	Turn right - D11 BLV Arc - crossing R207 BLV, turn left - R217 BLV - AMTOS	
AMTOS 1X	Turn left (MAX 210kt) - R083 BLV - BLV - R217 BLV - AMTOS	BLV MNM 5000
BISKA 1R	Turn left - D11 BLV Arc - crossing R026 BLV, turn right - R015 BLV - BISKA	
CALCE 1R	Turn left (MAX 210kt) - R083 BLV - BLV - R284 BLV - CALCE	BLV MNM 5000
DOSUL 1R	Turn left - D11 BLV Arc - crossing R336 BLV, turn right - R326 BLV - DOSUL	
MAPAX 1R	Turn left - D11 BLV Arc - crossing R001 BLV, turn right - R350 BLV - MAPAX	
PPN 1R	Turn left (MAX 210kt) - 043° - R091 BLV - FEBRI - R326 PPN - PPN	
SSN 1R	Turn left (MAX 210kt) - 043° - R091 BLV - FEBRI - SSN	

© Navitech - lebb01daorgo

Change: TRKs.

THIS CHART IS A PART OF NAVIGRAPH NDAC AND IS INTENDED FOR FLIGHT SIMULATION USE ONLY

SID RWY 12



SPEED: MAX 250kt until leaving FL100.
MNM CLIMB GRADIENT: 7% to 3200 (AMTOS 3B, AMTOS 3D, CALCE 2B)
 7% to 4500 (BISKA 3B, DOSUL 2B, MAPAX 2B)
 7% to 5000 (PPN 1H, PPN2G, SSN2B)

ALT RESTRICTION: Climb to **FL80**, except ATC clearance.
INITIAL CLIMB: Climb on 118° to LUKEP - follow SID.
 Cross LUKEP MNM 3200.

SID	Routing	Altitudes
AMTOS 3B	Turn left (MAX 210kt) - R083 BLV - BLV - R217 BLV - AMTOS	BLV MNM 5000
AMTOS 3D	Turn right - D11 BLV Arc - crossing R207 BLV, turn left - R217 BLV - AMTOS	
BISKA 3B	Turn left - D10 BLV Arc - crossing R027 BLV, turn right - R015 BLV - BISKA	
CALCE 2B	Turn left (MAX 210kt) - R083 BLV - BLV - R284 BLV - CALCE	BLV MNM 5000
DOSUL 2B	Turn left - D10 BLV Arc - crossing R337 BLV, turn right - R326 BLV - DOSUL	
MAPAX 2B	Turn left - D10 BLV Arc - crossing R002 BLV, turn right - R350 BLV - MAPAX	
PPN 1H	Turn right - R123 BLV - CEGAM - MALOB - PPN	
PPN 2G	Turn left (MAX 210kt) - 043° - R091 BLV - FEBRI - R326 PPN - PPN	
SSN2B	Turn left (MAX 210kt) - 043° - R091 BLV - FEBRI - SSN	

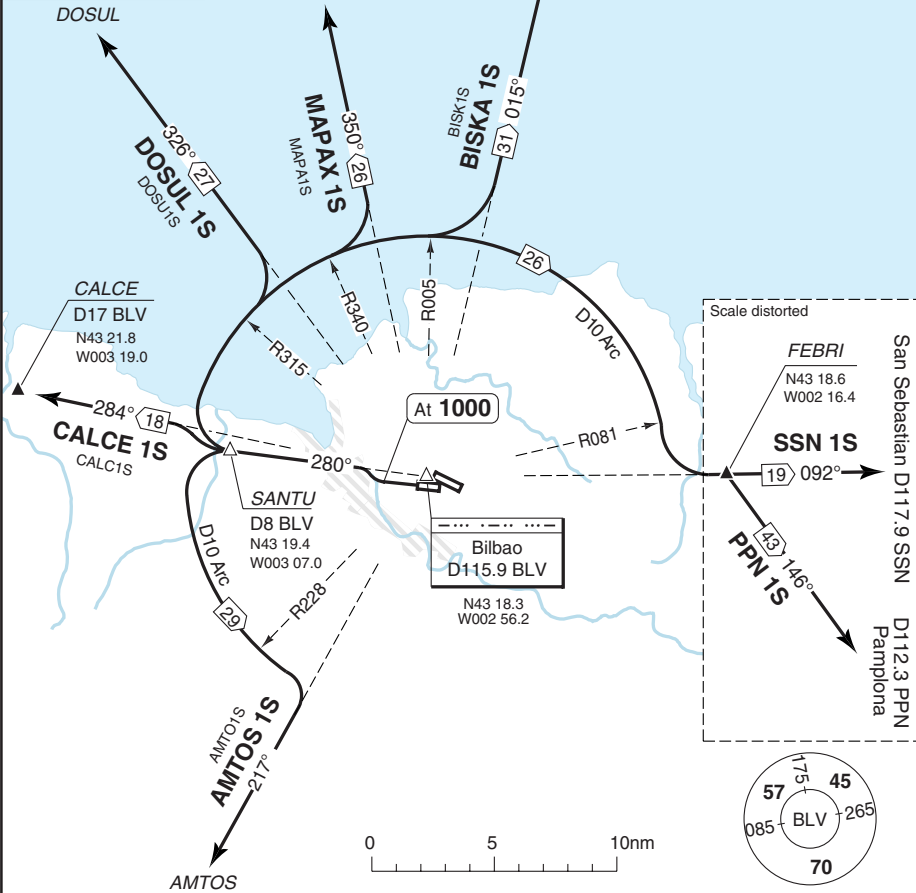
Change: PPN 1H replacing CEGAM 1G.

© Navitech - lebb02daorg0

SID RWY 28

Bilbao GND 121.7	TWR 118.5	APP 120.7	ATIS 118.825
---------------------	--------------	--------------	-----------------

TA 6000 AD Elev 137 MAPAX



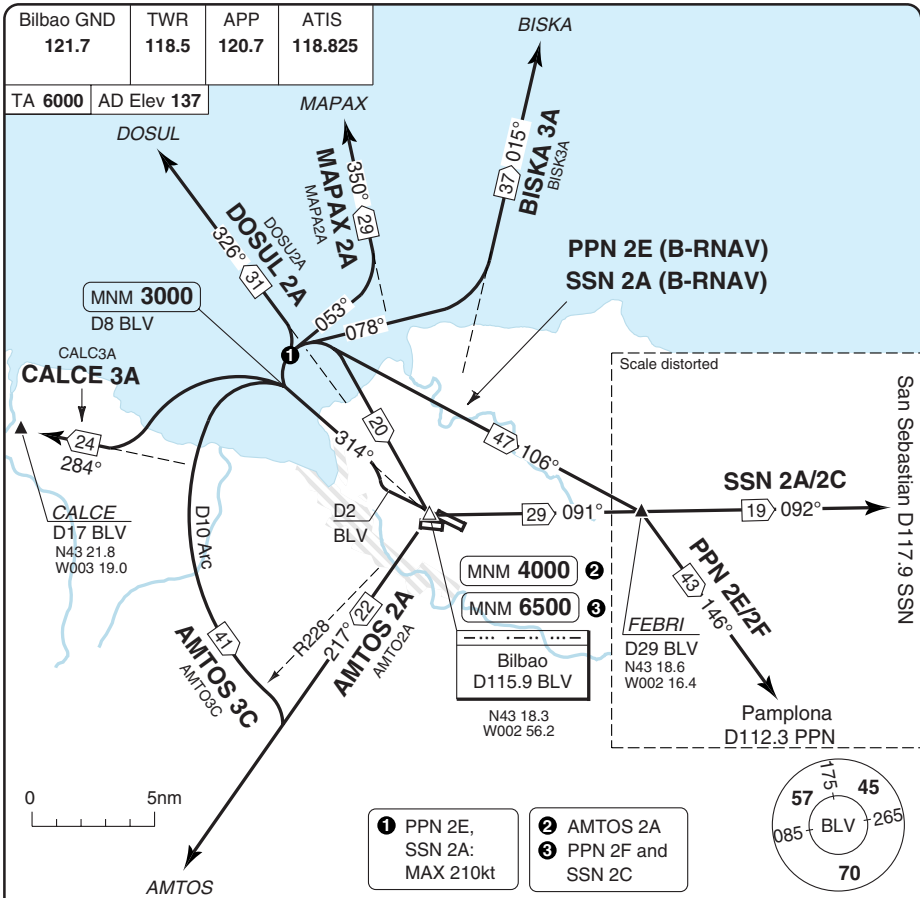
SPEED: MAX 250kt until leaving FL100.
MNM CLIMB GRADIENT: 7% to 5000
ALT RESTRICTION: Climb to **FL30**, except ATC clearance.
INITIAL CLIMB: Climb on 280° to **1000** - turn right - R280 BLV - SANTU - follow SID.

SID	Routeing
AMTOS 1S	Turn left - D10 BLV Arc - crossing R228 BLV, turn right - R217 BLV - AMTOS
BISKA 1S	Turn right - D10 BLV Arc - crossing R005 BLV, turn left - R016 BLV - BISKA
CALCE 1S	Turn right - R284 BLV - CALCE
DOSUL 1S	Turn right - D10 BLV Arc - crossing R315 BLV, turn left - R326 BLV - DOSUL
MAPAX 1S	Turn right - D10 BLV Arc - crossing R340 BLV, turn left - R351 BLV - MAPAX
PPN 1S	Turn right - D10 BLV Arc - crossing R081 BLV, turn left - R092 BLV - FEBRI - turn right - R326 PPN - PPN
SSN 1S	Turn right - D10 BLV Arc - crossing R081 BLV, turn left - R092 BLV - FEBRI - SSN

© Navitech - lebb03daorgo

Change: TRKS.

SID RWY 30



SPEED: MAX 250kt until leaving FL100.

MNM CLIMB GRADIENT: 7% to 5000 (except PPN2E, PPN2F, SSN2A, SSN2C)
7% to 4000 (PPN2E, PPN2F, SSN2A, SSN2C)

ALT RESTRICTION: Climb to **FL80**, except ATC clearance.

INITIAL CLIMB: Climb on 299° to D2 BLV - turn right - R314 BLV - at D8 BLV - follow SID.
Cross D8 BLV MNM 3000.

SID	Routing	Altitudes
AMTOS 2A	Turn right - BLV - AMTOS	BLV MNM 4000
AMTOS 3C	Turn left - D10 BLV Arc - crossing R228 BLV, turn right - R217 BLV - AMTOS	
BISKI 3A	Turn right - 078° - R016 BLV - BISKI	
CALCE 3A	Turn left - R284 BLV - CALCE	
DOSUL 2A	Turn right - R326 BLV - DOSUL	
MAPAX 2A	Turn right - 053° - R351 BLV - MAPAX	
PPN 2E	Turn right (MAX 210kt) - 106° - FEBRI - turn right - R326 PPN - PPN	
PPN 2F	Turn right - BLV - R092 BLV - FEBRI - turn right - R326 PPN - PPN	BLV MNM 6500
SSN 2A	Turn right (MAX 210kt) - 106° - FEBRI - turn left - R092 BLV - SSN	
SSN 2C	Turn right - BLV - R092 BLV - FEBRI - SSN	BLV MNM 6500

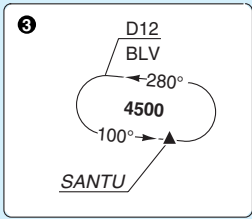
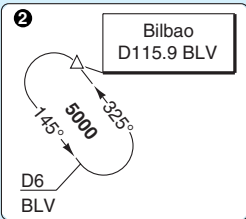
Change: TRKs.

THIS CHART IS A PART OF NAVIGRAPH NDAC AND IS INTENDED FOR FLIGHT SIMULATION USE ONLY

© Navtech - lebb01aaorg0

Bilbao APP 120.7	TWR 118.5	GND 121.7	ATIS 118.825
---------------------	--------------	--------------	-----------------

TL ATC AD Elev 137



DOSUL
D28 BLV
N43 40.8
W003 19.0

DOSUL 1Y
17 145°
6000

MAPAX
D23.2 BLV
N43 41.0
W003 02.7

MAPAX 1Y
17 170°
6000

D17 BLV

D17 BLV

IAF KALDO
D15 BLV
N43 26.4
W003 13.4

SNR 2Y
28 105°
6000

D18 SNR

4500

7 100°
4500

IAF SOMAN
D15 BLV
N43 20.3
W003 16.5

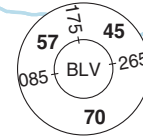
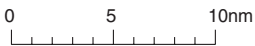
IAF SANTU
R280/ D8 BLV
N43 19.4
W003 07.0

IAF
Bilbao
D115.9 BLV
N43 18.3
W002 56.2

1 MAPAX-SANTU: 33nm
DOSUL-SANTU: 32nm

SPEED

MAX 250kt at FL120 or below.
210kt at the beginning of the final
turn to intercept the ILS localizer course.



STAR RWY 10 North, West

40 - 1 | 12 JAN 11

Spain - LEBB / BIO
BILBAO

THIS CHART IS A PART OF NAVIGRAPH NDAC AND IS INTENDED FOR FLIGHT SIMULATION USE ONLY

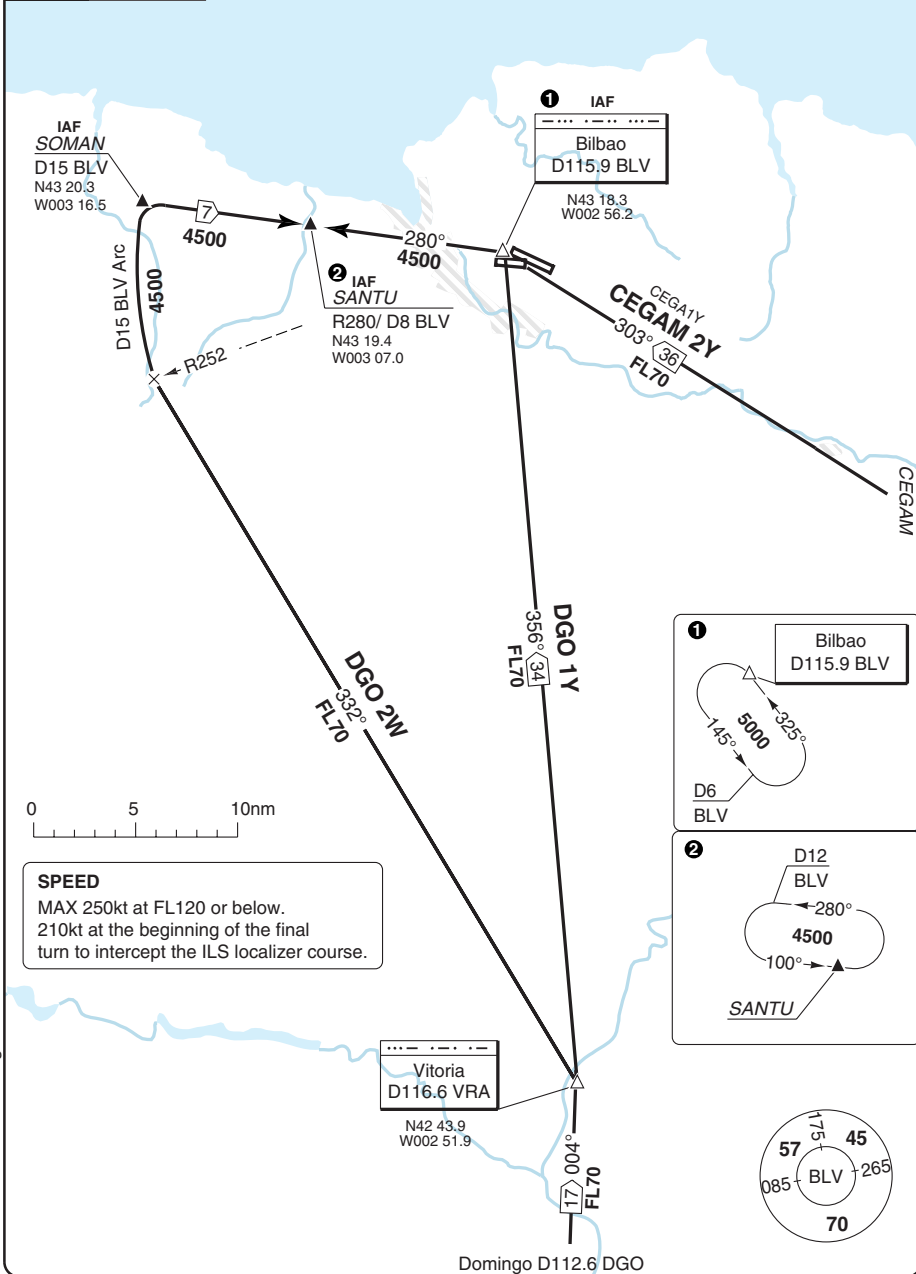
Change: TRKs, MNM ALTs

STAR RWY 10 South, East

BILBAO

Bilbao APP 120.7	TWR 118.5	GND 121.7	ATIS 118.825
---------------------	--------------	--------------	-----------------

TL ATC AD Elev 137



© Navitech - lebb02aaorg0

SPEED
 MAX 250kt at FL120 or below.
 210kt at the beginning of the final
 turn to intercept the ILS localizer course.

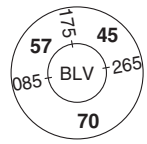
1

Bilbao
D115.9 BLV

325°
5000
145°
D6
BLV

2

D12
BLV
280°
4500
100°
SANTU



Domingo D112.6 DGO

Change: MNM ALTs, STAR designator.

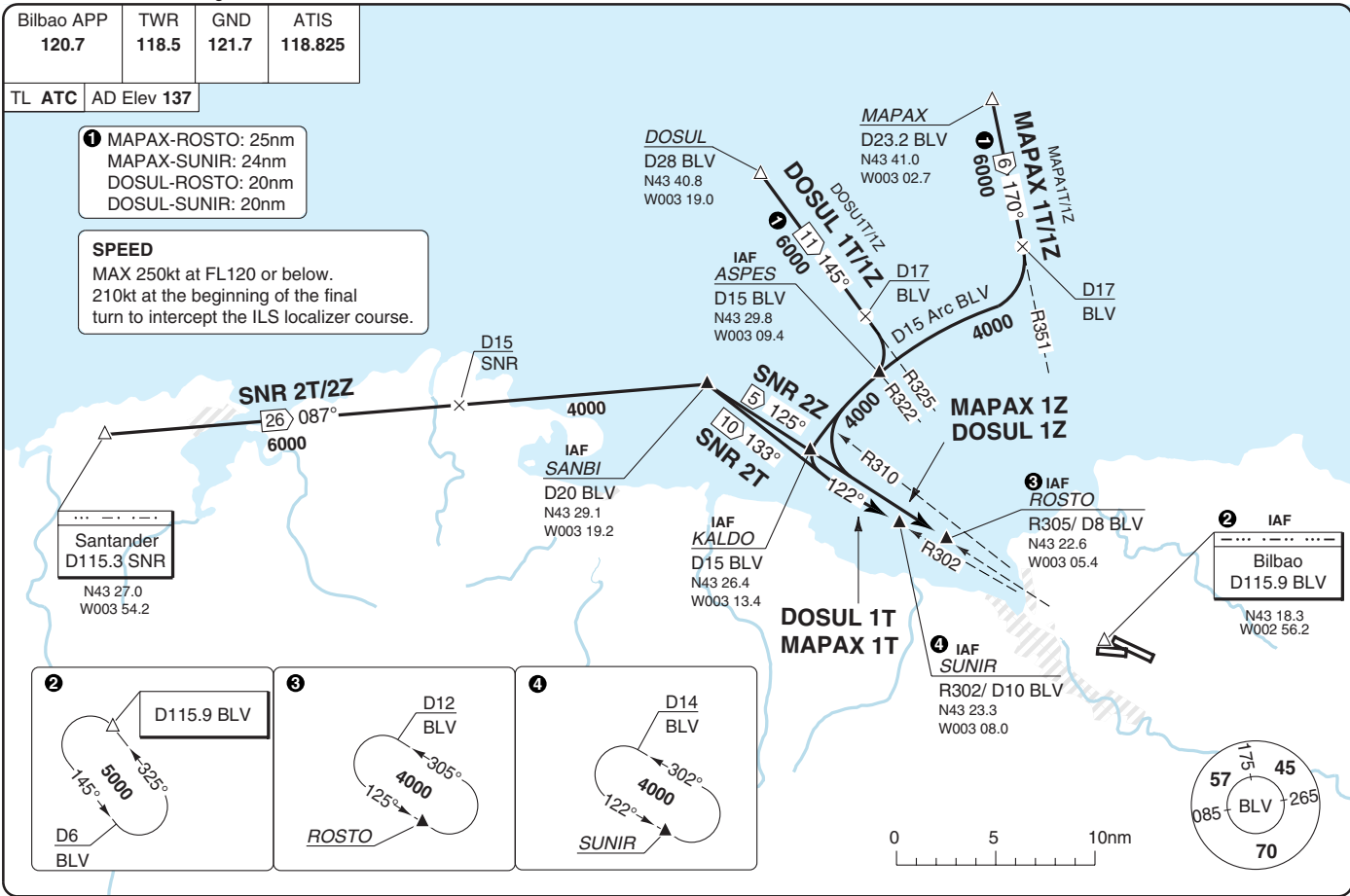
Bilbao APP 120.7	TWR 118.5	GND 121.7	ATIS 118.825
---------------------	--------------	--------------	-----------------

TL ATC AD Elev 137

- 1 MAPAX-ROSTO: 25nm
- MAPAX-SUNIR: 24nm
- DOSUL-ROSTO: 20nm
- DOSUL-SUNIR: 20nm

SPEED
 MAX 250kt at FL120 or below.
 210kt at the beginning of the final turn to intercept the ILS localizer course.

THIS CHART IS A PART OF NAVIGRAPH NDAC AND IS INTENDED FOR FLIGHT SIMULATION USE ONLY



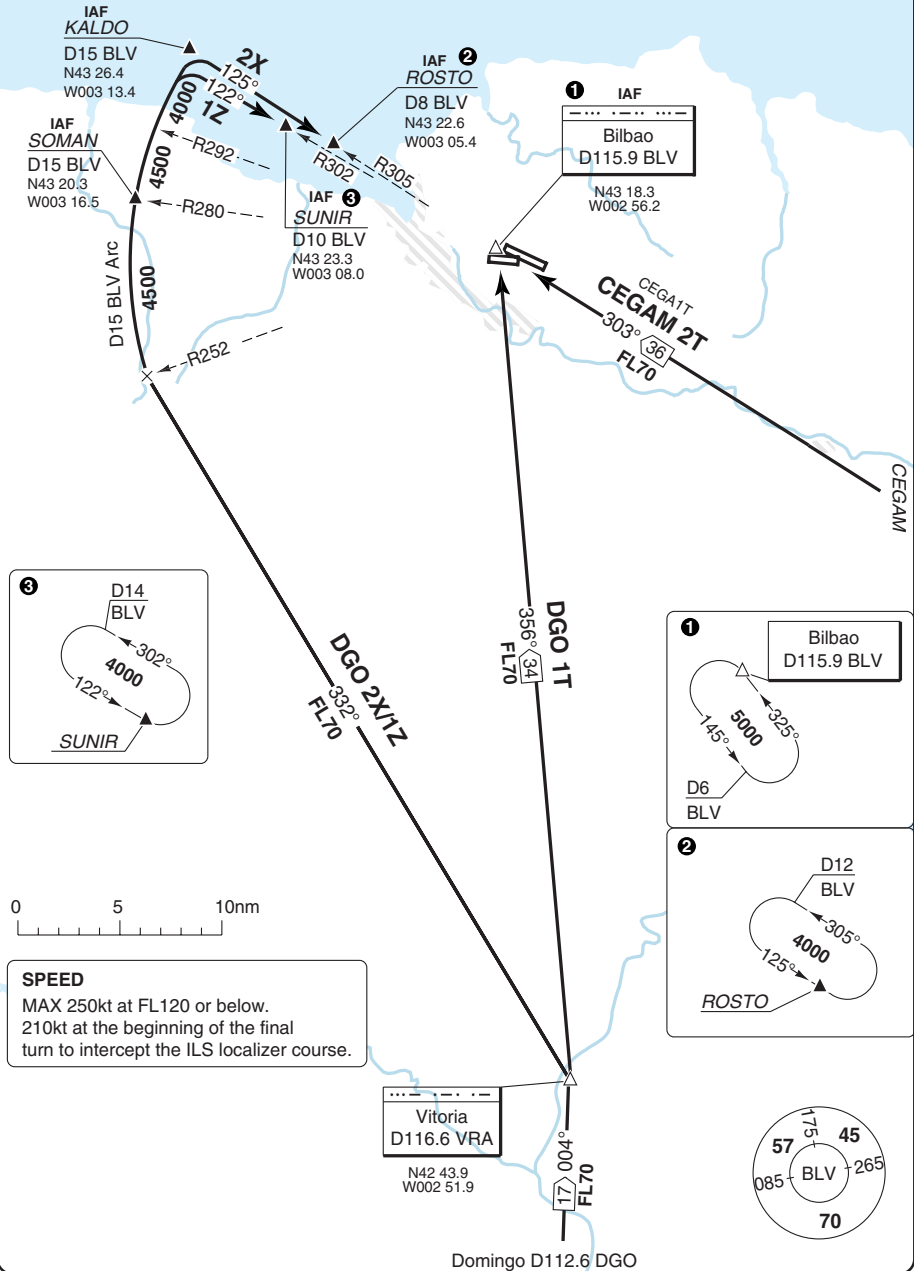
Change: New print

STAR RWY 12 South, East

BILBAO

Bilbao APP 120.7	TWR 118.5	GND 121.7	ATIS 118.825
---------------------	--------------	--------------	-----------------

TL ATC AD Elev 137



© Navitech - lebb04aaorg0

Change: DGO 1Z added

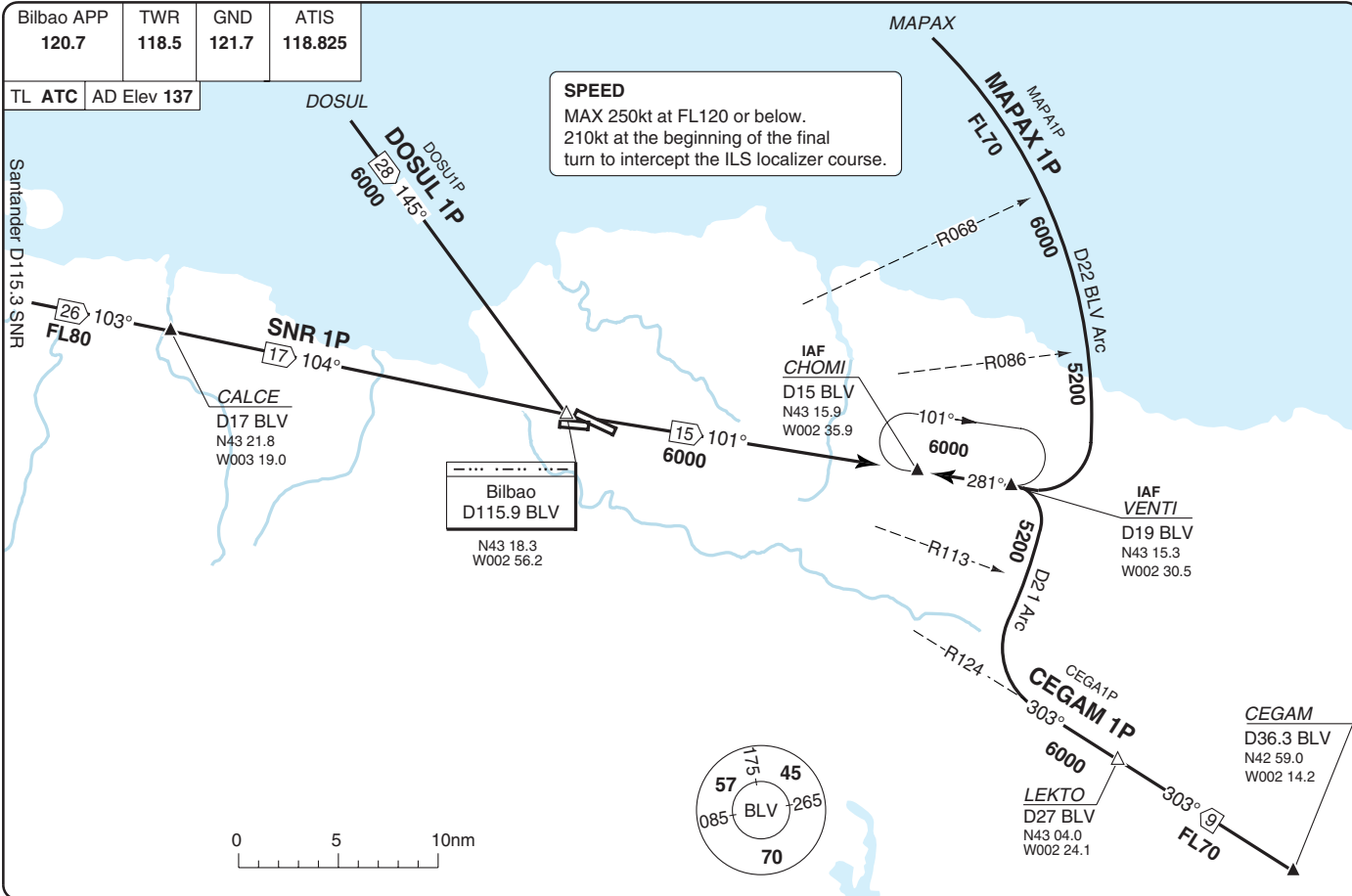
THIS CHART IS A PART OF NAVIGRAPH NDAC AND IS INTENDED FOR FLIGHT SIMULATION USE ONLY

© Navtech - lebb05aaorg0

Bilbao APP	TWR	GND	ATIS
120.7	118.5	121.7	118.825

TL ATC AD Elev 137

SPEED
 MAX 250kt at FL120 or below.
 210kt at the beginning of the final
 turn to intercept the ILS localizer course.



STAR RWY 28

40 - 5 | 30 NOV 11

Spain - LEBB / BIO
 BILBAO

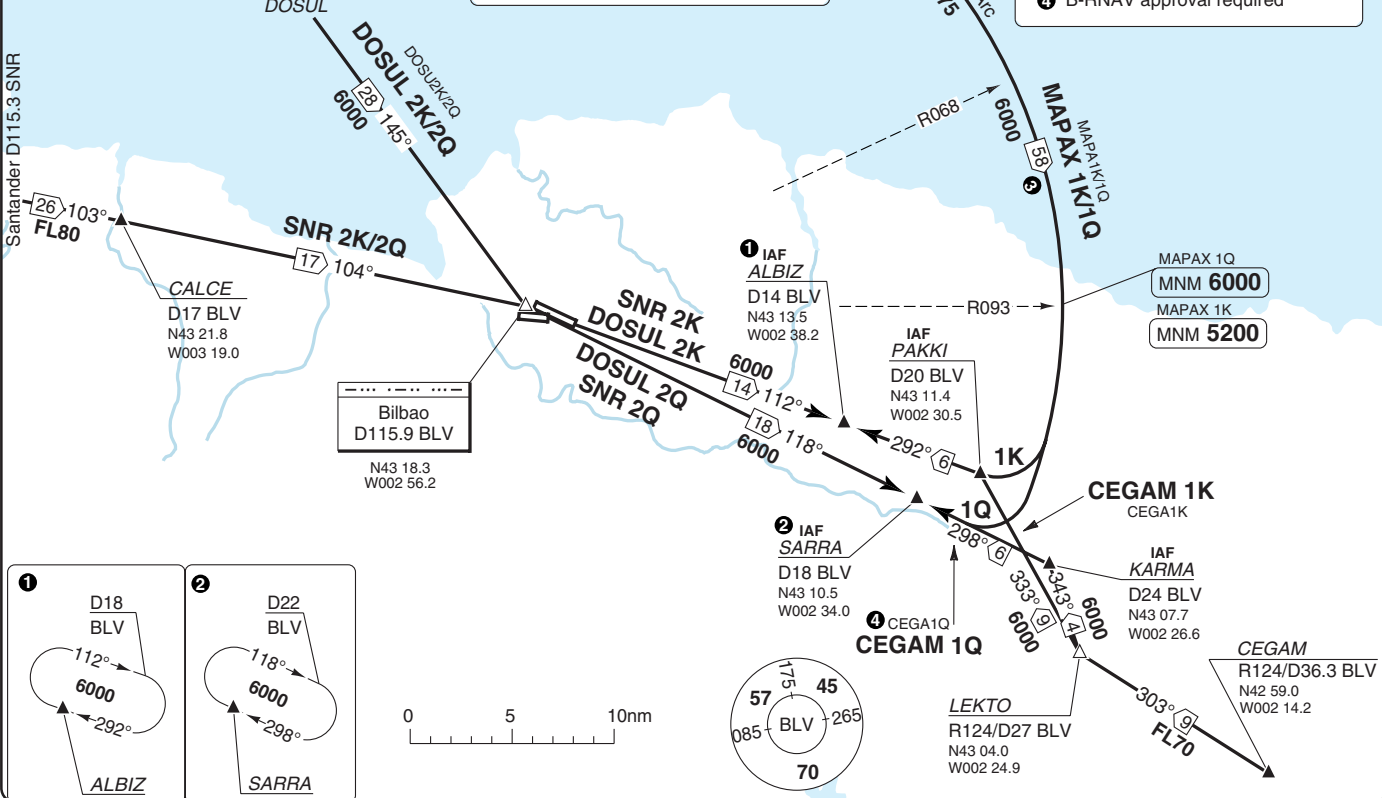
THIS CHART IS A PART OF NAVIGRAPH NDAC AND IS INTENDED FOR FLIGHT SIMULATION USE ONLY
 Change: Tracks

Bilbao APP	TWR	GND	ATIS
120.7	118.5	121.7	118.825

TL	ATC	AD Elev	137
----	-----	---------	-----

SPEED
 MAX 250kt at FL120 or below.
 210kt at the beginning of the final turn to intercept the ILS localizer course.

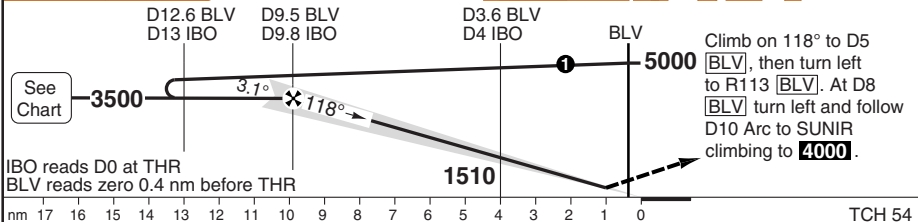
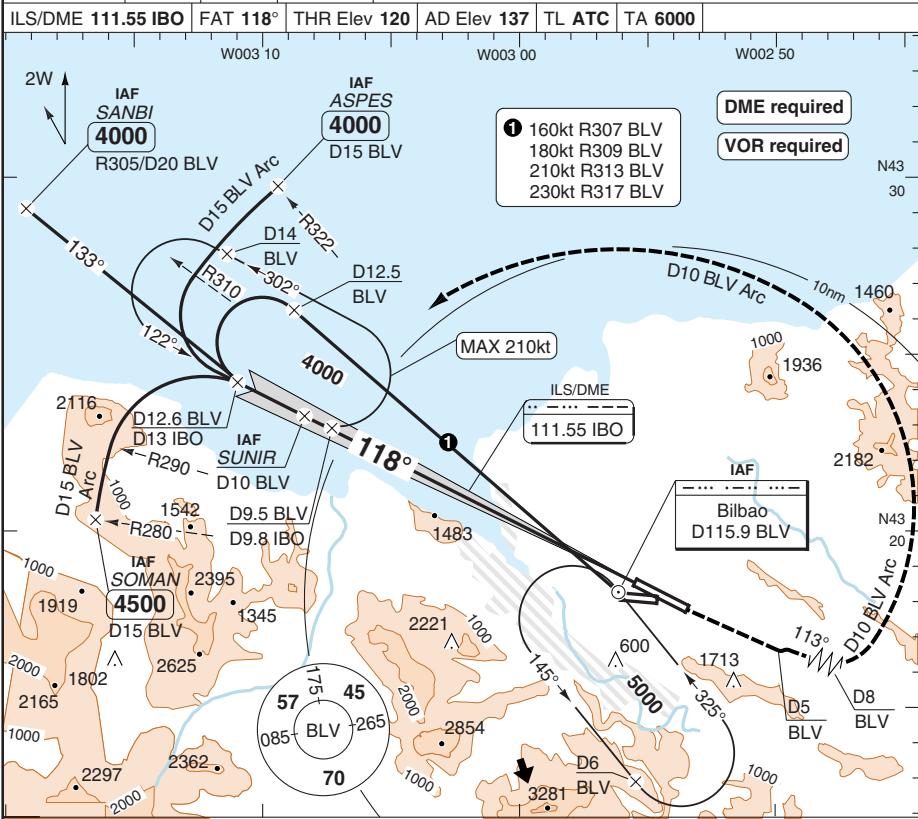
- ③ Distance MAPAX - SARRA : 65nm
- ④ B-RNAV approval required



ILS RWY 12

BILBAO

Bilbao APP 120.7	TWR 118.5	GND 121.7	ATIS 118.825
ILS/DME 111.55 IBO	FAT 118°	THR Elev 120	AD Elev 137 TL ATC TA 6000



ACFT	ILS+DME 5%	ILS+DME 2.5%	Circling ^a	^a North of AD, between 291° clockwise to 135°	DME IBO	3.1° ALT	LDA 2600x45 8530x147ft P 3.1° L/R
A	600 (474) 1500m	1010 (883) 1500m	1810 (1670) 1.5km		9	3210	
B	610 (486) 1500m	1020 (895) 1500m	1980 (1840) 1.6km		8	2870	
C	620 (494) 1800m	1030 (903) 2400m	2070 (1930) 2.4km		7	2530	
D	630 (504) 1900m	1040 (913) 2400m	2070 (1930) 3.6km		6	2190	
GS	80	100	120	140	160	1510	
ROD 3.1°	440	550	660	770	880	1170	
						560	

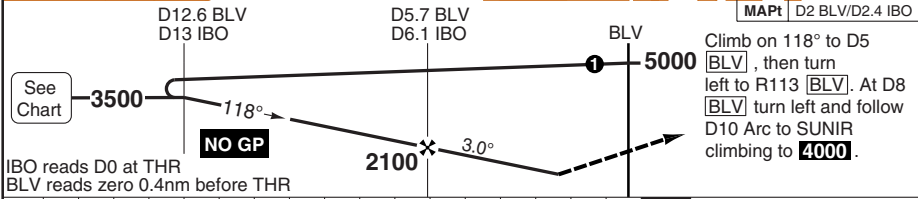
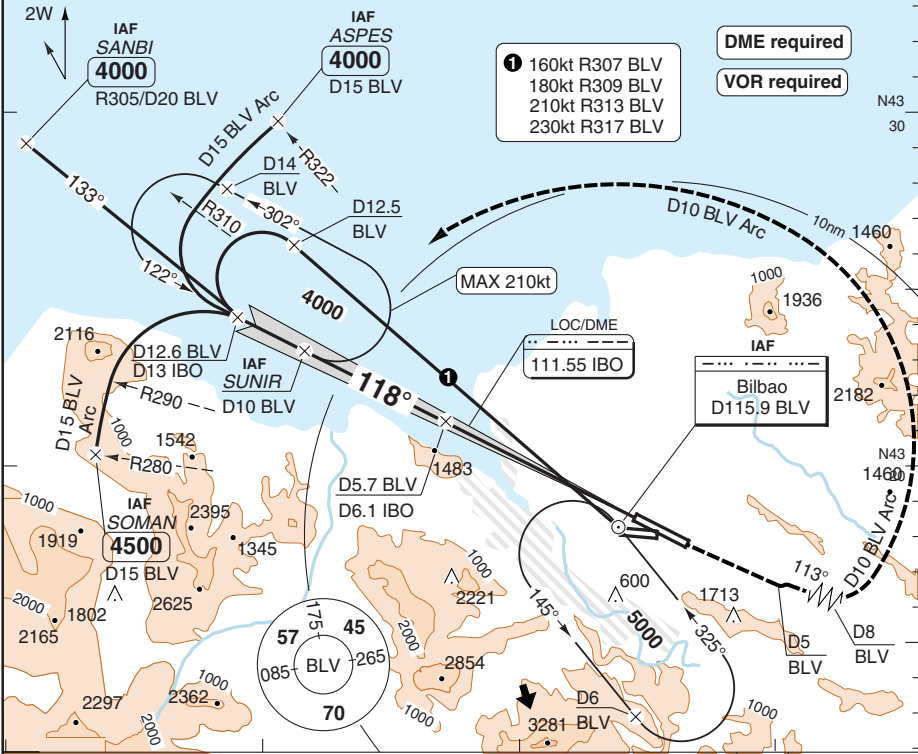
© Navtech - lebb01iaip00

LOC RWY 12

BILBAO

Bilbao APP 120.7	TWR 118.5	GND 121.7	ATIS 118.825
----------------------------	---------------------	---------------------	------------------------

LOC/DME 111.55 IBO	FAT 118°	THR Elev 120	AD Elev 137	TL ATC	TA 6000
---------------------------	-----------------	---------------------	--------------------	---------------	----------------



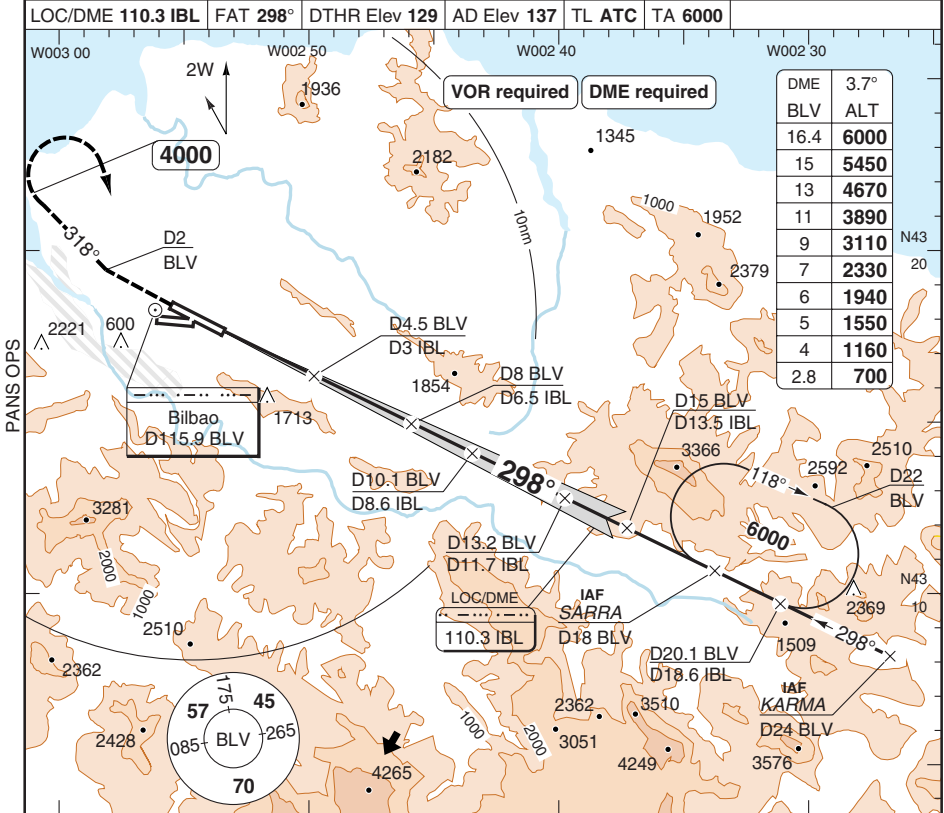
IBO reads D0 at THR BLV reads zero 0.4nm before THR	nm	17	16	15	14	13	12	11	10	9	8	7	6	5	4	3	2	1	0
ACFT A B 1800 (1680) C 5000m D	LOC+DME	Circling ⓐ	ⓐ North of AD, between 291° clockwise to 135°		DME 3.0°	DME 3.0°	LDA 2600x45												
			1820 (1680)	5.0km	BLV ALT	IBO ALT	8530x147ft												
			1980 (1840)	5.0km	10.1 3500	10.5 3500	P 3.1° L/R												
			2070 (1930)	5.0km	8 2830	9 3020													
				7 2520	8 2710														
				6 2200	7 2390														
				5 1880	6 2070														
				4.8 1800	5.2 1800														
GS	80	100	120	140	160														
ROD 3.0°	420	530	640	740	850														

© Navtech - lebb03aiap00

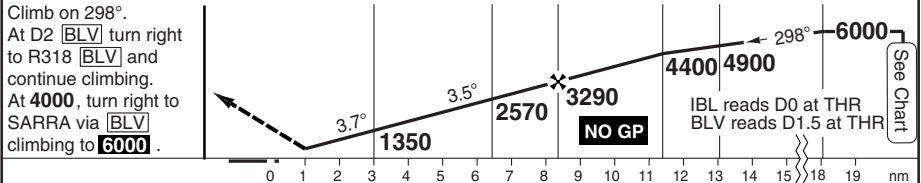
IALS

LOC RWY30

Bilbao APP 120.7	TWR 118.5	GND 121.7	ATIS 118.825
LOC/DME 110.3 IBL		FAT 298°	DTHR Elev 129
AD Elev 137		TL ATC	TA 6000



MAPt	D2.5 BLV / D1 IBL	D4.5 BLV / D3 IBL	D8 BLV / D6.5 IBL	D10.1 BLV / D8.6 IBL	D13.2 BLV / D11.7 IBL	D15 BLV / D13.5 IBL	D20.1 BLV / D18.6 IBL
------	-------------------	-------------------	-------------------	----------------------	-----------------------	---------------------	-----------------------

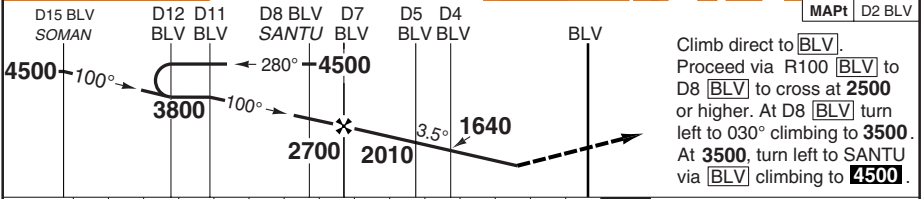
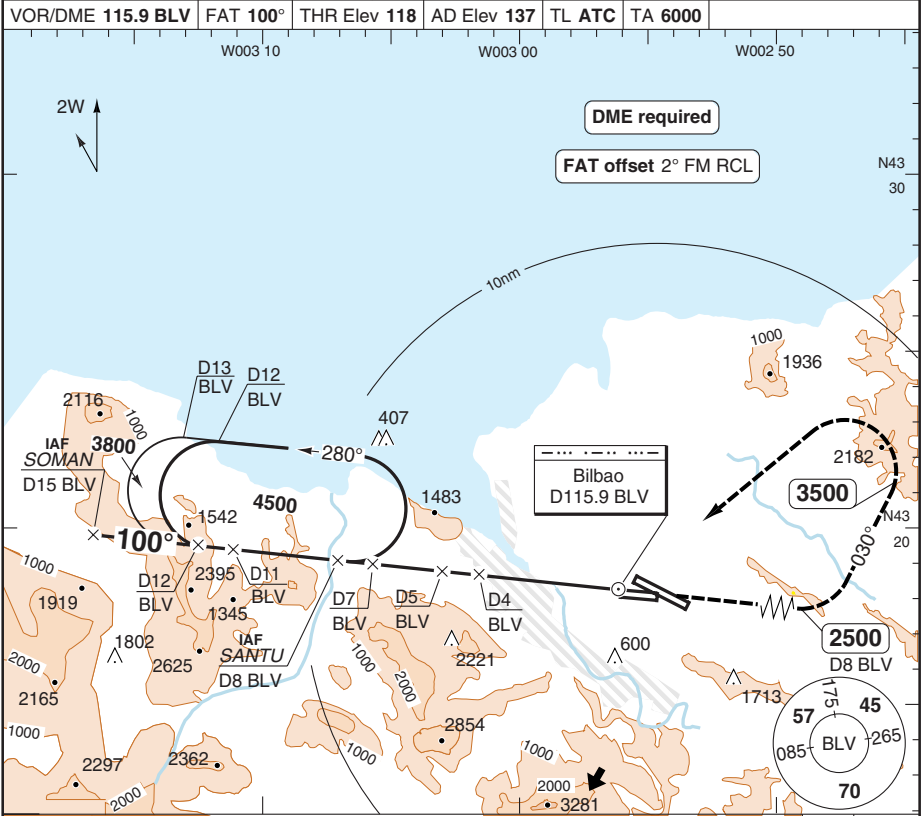


© Navitech - lebb04iiaip00	EU OPS	ACFT	LOC+DME	Circling a a North of AD, between 291° clockwise to 135°	DME	3.7°	LDA 2140x45 7020x147ft P 3.4° L/R	
		A	700 (580)	1720 (1580) 1.5km	14.9	6000		
		B	1500m	1980 (1840) 1.6km	13	5250		
		C	700 (580)	2070 (1930) 2.4km	11	4470		
		D	1900m	2070 (1930) 3.6km	9	3690		
		GS	100	120	140	160	7	2910
		ROD 3.7°	660	790	920	1050	5	2130
		FAF-MAPt	4:33	3:48	3:15	2:51	3	1350
							1.3	700

VOR RWY 10

BILBAO

Bilbao APP 120.7	TWR 118.5	GND 121.7	ATIS 118.825
VOR/DME 115.9 BLV	FAT 100°	THR Elev 118	AD Elev 137
TL ATC	TA 6000		



Climb direct to **[BLV]**.
 Proceed via R100 **[BLV]** to D8 **[BLV]** to cross at **2500** or higher. At D8 **[BLV]** turn left to 030° climbing to **3500**. At **3500**, turn left to **SANTU** via **[BLV]** climbing to **4500**.

ACFT	VOR+DME	Circling a	a North of AD, between 268° clockwise to 108°	DME	3.5°	LDA 2000x45
A	1200 (1090)	1720 (1580)		BLV	ALT	6561x147ft
B	1500m	1980 (1840)		10.4	4000	P 3.6° L/R
C	1200 (1090)	2070 (1930)		9	3490	
D	2400m	2070 (1930)		7	2750	
		3.6km		6	2380	
				5	2010	
GS	100	120	140	4	1640	
ROD 3.5°	620	740	860	3	1280	
FAF-MAPt	Not Published			2.8	1200	

© Navtech - lebb05iaip00

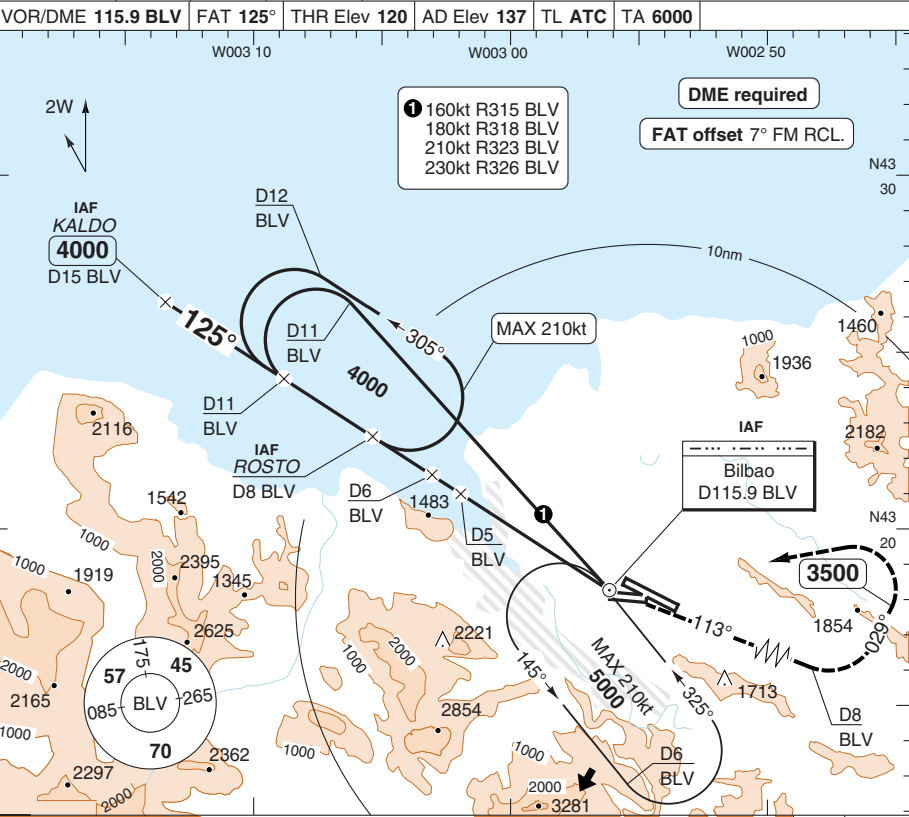
Change: Note

THIS CHART IS A PART OF NAVIGRAPH NDAC AND IS INTENDED FOR FLIGHT SIMULATION USE ONLY

VOR RWY 12

BILBAO

Bilbao APP 120.7	TWR 118.5	GND 121.7	ATIS 118.825
VOR/DME 115.9 BLV	FAT 125°	THR Elev 120	AD Elev 137 TL ATC TA 6000



© Navtech - lebb06iaip00

Change: Minima, Note

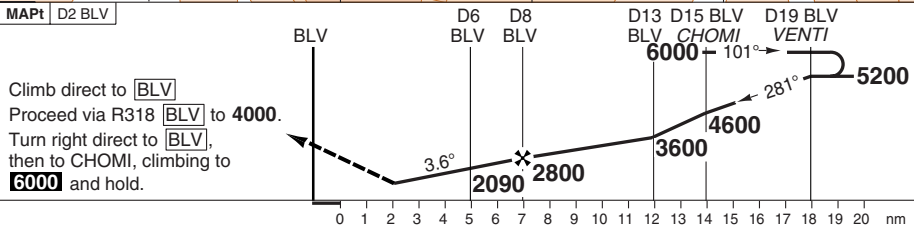
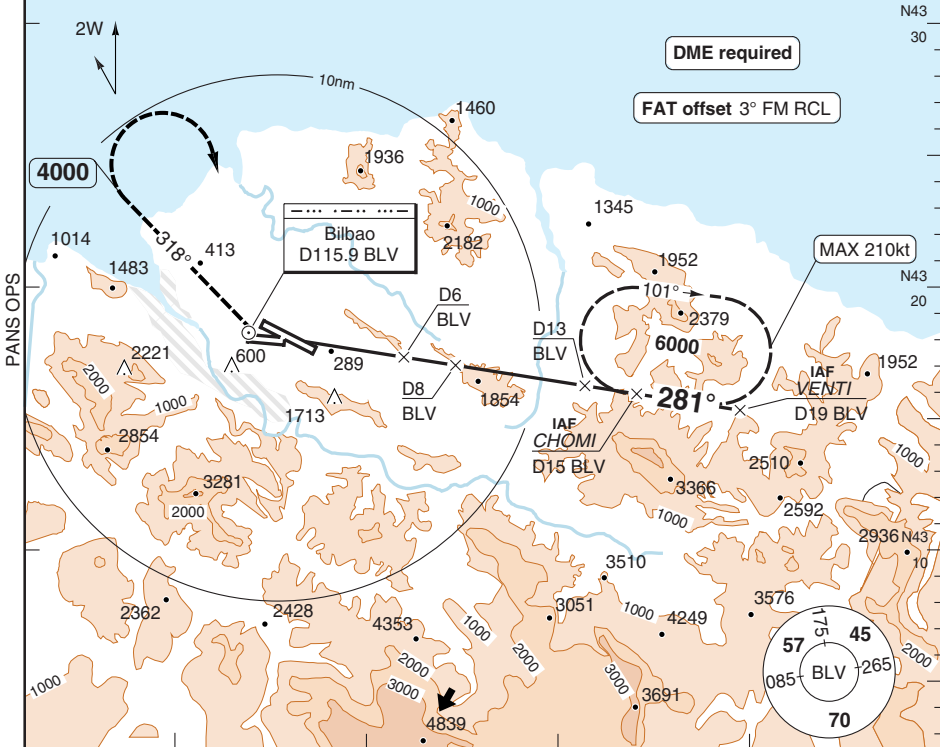
THIS CHART IS A PART OF NAVIGRAPH NDAC AND IS INTENDED FOR FLIGHT SIMULATION USE ONLY

VOR RWY 28

BILBAO

Bilbao APP 120.7	TWR 118.5	GND 121.7	ATIS 118.825
----------------------------	---------------------	---------------------	------------------------

VOR/DME 115.9 BLV	FAT 281°	THR Elev 131	AD Elev 137	TL ATC	TA 6000
--------------------------	-----------------	---------------------	--------------------	---------------	----------------



ACFT	VOR+DME	Circling ^a	^a North of AD, between 268° clockwise 108°	DME	3.6°	LDA 2000x45
A	1500 (1370) 5000m	1720 (1580) 5.0km		BLV	ALT	6561x147ft
B		1980 (1840) 5.0km		14.2	5200	P 3.4° L/R
C		2070 (1930) 5.0km		12	4380	NALS
D				10	3620	
		8	2860			
		6	2090			
GS	100	120	140	160	5	1710
ROD 3.6°	640	770	900	1020	4.5	1500
FAF-MAPt	3:35	3:00	2:34	2:15		

© Navtech - lebb07iaip00

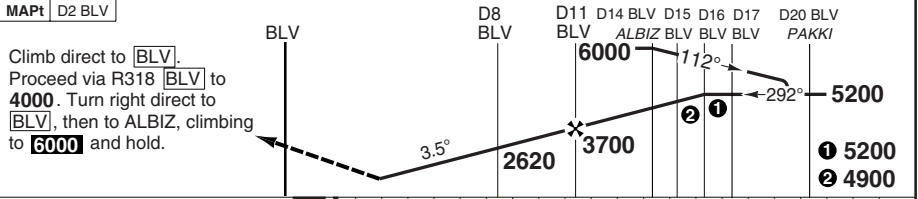
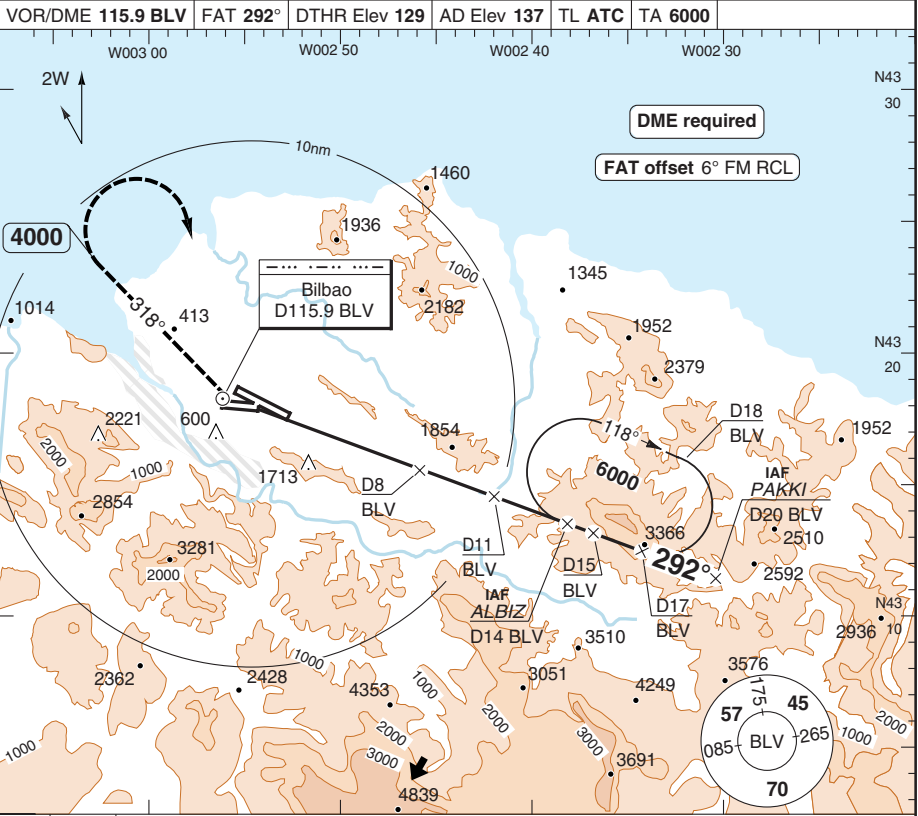
Change: Note

THIS CHART IS A PART OF NAVIGRAPH NDAC AND IS INTENDED FOR FLIGHT SIMULATION USE ONLY

VOR RWY 30

BILBAO

Bilbao APP 120.7	TWR 118.5	GND 121.7	ATIS 118.825
VOR/DME 115.9 BLV	FAT 292°	DTHR Elev 129	AD Elev 137
TL ATC	TA 6000		



MAPt	D2 BLV	D8 BLV	D11 BLV	D14 BLV	D15 ALBIZ BLV	D16 BLV	D17 BLV	D20 BLV	PAKKI		
<p>Climb direct to [BLV]. Proceed via R318 [BLV] to 4000. Turn right direct to [BLV], then to ALBIZ, climbing to 6000 and hold.</p>											
ACFT	VOR+DME	Circling ⓐ	ⓐ North of AD, between 291° clockwise to 135°							DME ALT	LDA 2140x45 7020x147ft P 3.4° L/R
A	1750 (1630) 5000m	1770 (1630) 5.0km								3.5°	
B		1980 (1840) 5.0km								14.9	
C		2090 (1950) 5.0km								13	
D										11	
GS	100	120	140	160						9	
ROD 3.5°	630	760	880	1010						7	
FAF-MAPt	5:23	4:30	3:51	3:22						6	
										5.7	

© Navitech - lebb08iaip00

Change: Minima, Note

THIS CHART IS A PART OF NAVIGRAPH NDAC AND IS INTENDED FOR FLIGHT SIMULATION USE ONLY

JAR-OPS Landing Minima

BILBAO

The following Minima is for Public Transport aircraft and conforms to JAR-OPS1 regulations.

STRAIGHT-IN APPROACH		C				D			
R/W	Procedure	DA/ MDA QNH ft	DH/ MDH QFE ft	RVR m	RVR No ALS m	DA/ MDA QNH ft	DH/ MDH QFE ft	RVR m	RVR No ALS m
10	VOR/DME	1210	1090	1800	2000	1210	1090	2000	2000
12	ILS/DME (M/App 2.5%)	1030	910	900	1200	1040	920	900	1200
12	ILS/DME (M/App 5%)	620	500	900	1200	630	510	900	1200
12	LOC/DME (M/App 2.5%)	1800	1680	1800	2000	1800	1680	2000	2000
12	VOR/DME (M/App 2.5%)	1430	1310	1800	2000	1430	1310	2000	2000
12	VOR/DME (M/App 5%)	980	860	1800	2000	980	860	2000	2000
28	VOR/DME	1510	1370	2000	N/A	1510	1370	2000	N/A
30	ILS/DME	380	250	600	1000	390	260	650	1200
30	LOC/DME	710	580	1200	2000	710	580	1600	2000
30	VOR/DME	1760	1630	1400	2000	1760	1630	1800	2000

Notes:

CIRCLING		C			D		
R/W	Procedure	MDA QNH ft	MDH QFE ft	Vis m	MDA QNH ft	MDH QFE ft	Vis m
12	ILS/DME, LOC/DME (1)	2070	1930	2400	2070	1930	3600
30	VOR/DME (1)	2070	1930	2400	2070	1930	3600
	Others (1)	2070	1930	2400	2070	1930	3600

Notes:

(1) North of aerodrome only, as follows:

10 / 28 sector 268° clockwise to 108°,

12 / 30 sector 291° clockwise to 135°.

TAKE-OFF		C		D	
Runway	Facilities	RVR	Vis	RVR	Vis
30 (1)	RCLL(H)+REDL(H)+ Multi RVR	125	-	150	-
30 (1)	RCLL + REDL + Multi RVR	150	-	200	-
30 (1)	RCLL + REDL	200	-	250	-
30 (1)	REDL and/or RCL	250	-	300	-
All	REDL and/or RCL	400	-	400	-
All	Nil (Day only)	500	-	500	-

Notes:

(1) LVP must be in force.

JAR-OPS Landing Minima

BILBAO

The following Minima is for Public Transport aircraft and conforms to JAR-OPS1 regulations.

STRAIGHT-IN APPROACH		A				B			
R/W	Procedure	DA/ MDA QNH ft	DH/ MDH QFE ft	RVR m	RVR No ALS m	DA/ MDA QNH ft	DH/ MDH QFE ft	RVR m	RVR No ALS m
10	VOR/DME	1210	1090	1500	1500	1210	1090	1500	1500
12	ILS/DME (M/App 2.5%)	1010	890	900	1200	1020	900	900	1200
12	ILS/DME (M/App 5%)	600	480	900	1200	610	490	900	1200
12	LOC/DME (M/App 2.5%)	1800	1680	1500	1500	1800	1680	1500	1500
12	VOR/DME (M/App 2.5%)	1430	1310	1500	1500	1430	1310	1500	1500
12	VOR/DME (M/App 5%)	980	860	1500	1500	980	860	1500	1500
28	VOR/DME	1510	1370	1500	N/A	1510	1370	1500	N/A
30	ILS/DME	360	230	600	1000	370	240	600	1000
30	LOC/DME	710	580	1000	1500	710	580	1200	1500
30	VOR/DME	1760	1630	1200	1500	1760	1630	1400	1500

Notes:

CIRCLING		A			B		
R/W	Procedure	MDA QNH ft	MDH QFE ft	Vis m	MDA QNH ft	MDH QFE ft	Vis m
12	ILS/DME, LOC/DME (1)	1810	1670	1500	1980	1840	1600
30	VOR/DME (1)	1760	1620	1500	1980	1840	1600
	Others (1)	1720	1580	1500	1980	1840	1600

Notes:

(1) North of aerodrome only, as follows:

10 / 28 sector 268° clockwise to 108°,

12 / 30 sector 291° clockwise to 135°.

TAKE-OFF		A		B	
Runway	Facilities	RVR	Vis	RVR	Vis
30 (1)	RCLL(H)+REDL(H)+ Multi RVR	125	-	125	-
30 (1)	RCLL + REDL + Multi RVR	150	-	150	-
30 (1)	RCLL + REDL	200	-	200	-
30 (1)	REDL and/or RCL	250	-	250	-
All	REDL and/or RCL	400	-	400	-
All	Nil (Day only)	500	-	500	-

Notes:

(1) LVP must be in force.