

Airport information:

Country: Bulgaria

City: VARNA

Coordinates: N 43° 13.9', E027 49.5

Elevation: 230

Customs: Customs: H24.

Fuel: Jet A1

RFF: CAT 8

hours: H24.

Runways:

Runway 09

Takeoff length: 2517, Landing length: 2517

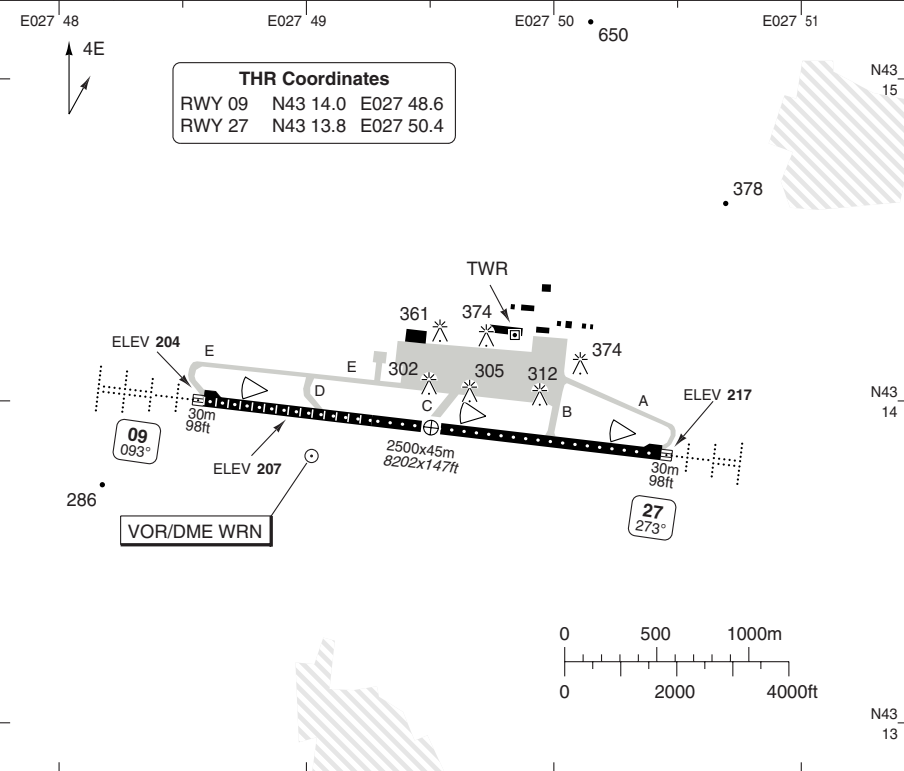
Runway 27

Takeoff length: 2517, Landing length: 2517

AERODROME

Varna TWR 119.5 118.9	ATIS 118.075
---	------------------------

AD Elev 230	ARP: N43 13.9 E027 49.5	RFF: CAT 8	AD HR: H24
--------------------	-------------------------	------------	------------



RWY	Slope	TORA m/ft	LDA m/ft	ALS	REDL	RCLL	Additional
09	+0.2	2500 / 8202	2500 / 8202	H-C ①	H	15m	P 3°
27	-0.2	2500 / 8202	2500 / 8202	H-C ②	H	15m	P 3.4°

① 600m. ② 450m.

STATE		TAKE OFF MINIMA			
RWY	Facilities	RVR			
		A	B	C	D
09/27	RCLL + REDL + Multiple RVR	LVTO	150m	150m	200m
	RCLL + REDL	LVTO	150m	200m	250m
	RCL + REDL	LVTO	200m	300m	400m
	REDL		400m	500m	600m

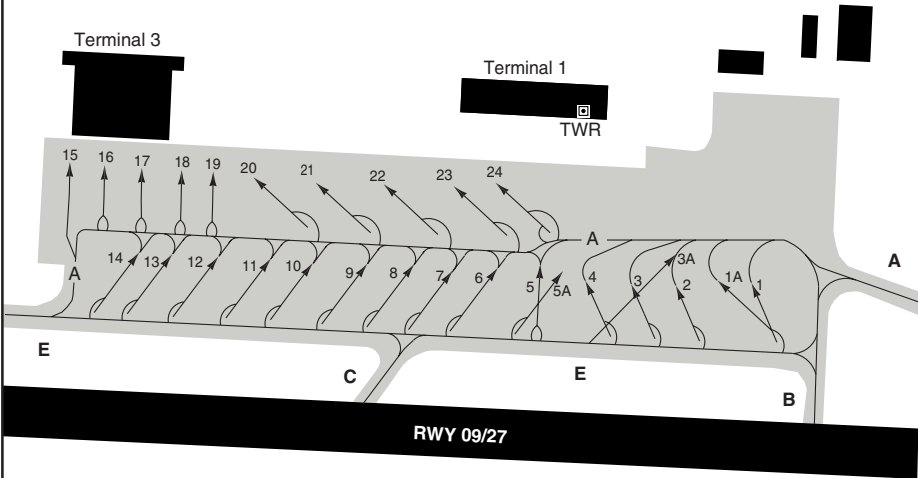
© Navitech - lbwn01laorg0

Change: RFF.

AERODROME

VARNA

Varna TWR	ATIS
119.5	118.075
118.9	



GENERAL INFORMATION

- | | |
|---|--|
| <p>1. SPEED
MAX 250kt (450km/h) below 10000 (3050M STD).</p> <p>2. PREFERENTIAL RWY SYSTEM
TKOF: RWY 27. LDG: RWY 09.</p> | <p>3. LOW VISIBILITY PROCEDURES</p> <p>3.1 TKOF: RWY 27</p> <p>3.2 Taxiing to RWY 27 via TWY A only.
Taxiing of ACFT in LVP conditions to be assisted by FOLLOW ME car.</p> |
|---|--|

Varna TWR	APP	ATIS
119.5	121.0	118.075
118.9	124.6	

TA 12000 AD Elev 230

TOTKA
D30.8 WRN
N43 12.3
E027 07.0

TOTKA 2A
TOTK2A

BALIK
N43 40.6
E027 18.0

BALIK 2A
BALI2A
315°

At 820

NEDSI 1A
NEDSI1A
074°

IVGOT 2A
IVGO2A
099°

Varna
D112.4 WRN
N43 13.9
E027 49.0

SUNIB 2A
SUNI2A
180°

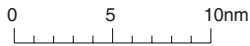
SUNIB
D21.1 WRN
N42 53.0
E027 46.8

IVGOT
D32.4 WRN
N43 06.3
E028 32.2



Varna TMA (C) FL175 3000

Burgas TMA (C) FL175 3000



COM: Contact Varna Radar 121.0 immediately after TKOF.

SPEED: MAX 250kt below 10000.

MNM CLIMB GRADIENT: 5% to 2700

SID	Routing
BALIK 2A	Climb on 093° - at 820 turn right - WRN - R315 WRN - BALIK
IVGOT 2A	Climb on 093° - at 820 turn right - R099 WRN - IVGOT
NEDSI 1A	Climb on 093° - at 820 turn right - WRN - R074 WRN - NEDSI
SUNIB 2A	Climb on 093° - at 820 turn right - 235° - R180 WRN - SUNIB
TOTKA 2A	Climb on 093° - at 820 turn right - 315° - R263 WRN - TOTKA

SID RWY 09

W/E 06 MAY 10

30 - 1 06 APR 10

Bulgaria - LBWN / VAR

VARNA

THIS CHART IS A PART OF NAVIGRAPH NDAC AND IS INTENDED FOR FLIGHT SIMULATION USE ONLY

Change: SIDs revised

WEF 06 MAY 10

30 - 2 | 06 APR 10

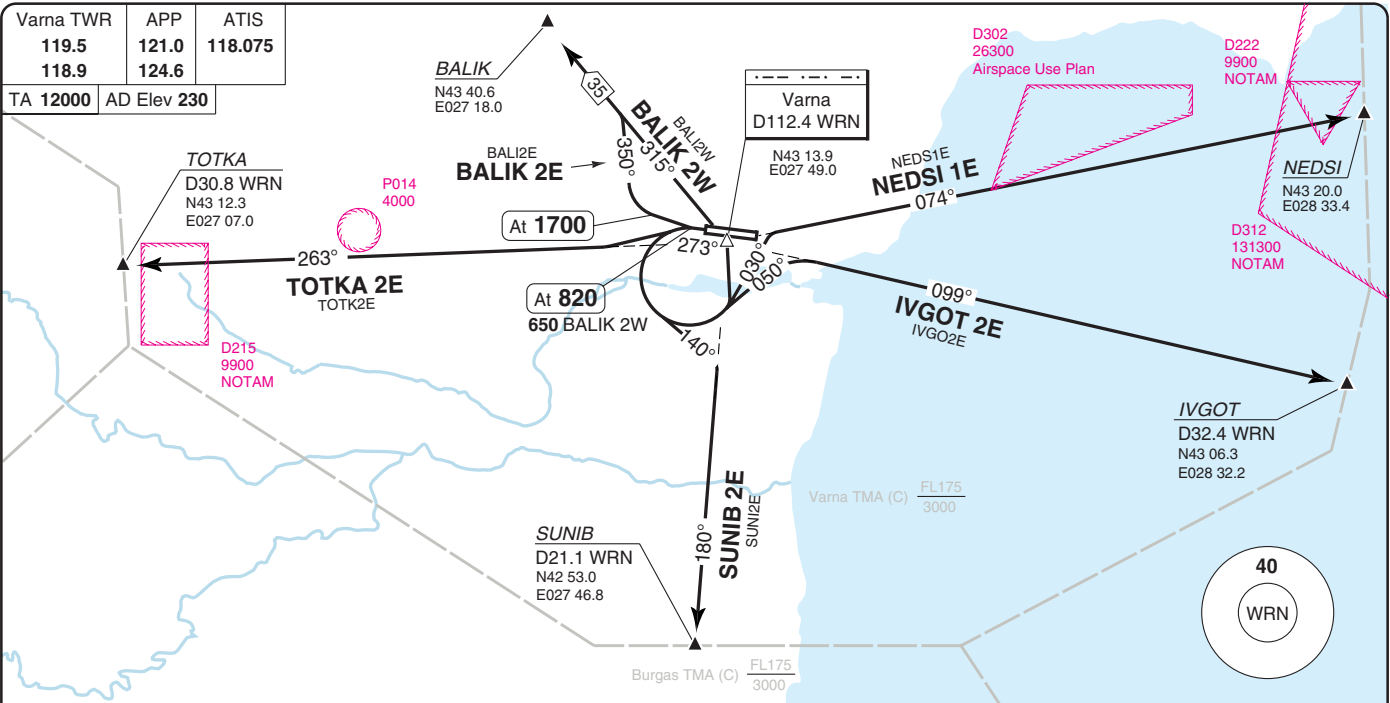
Bulgaria - LBWN / VAR

SID RWY 27

VARNA

Varna TWR	APP	ATIS
119.5	121.0	118.075
118.9	124.6	

TA 12000	AD Elev 230
----------	-------------



COM: Contact Varna Radar 121.0 immediately after TKOF.
SPEED: MAX 250kt below 10000.
MNM CLIMB GRADIENT: 5% to 2700 (except BALIK 2E)
 BALIK 2E: 5.5% to 4000

SID	Routeing
BALIK 2E	Climb on 273° - at 1700, turn right - 350° - R315 WRN - BALIK
BALIK 2W	Climb on 273° - at 650, turn left - 050° - R099 WRN - IVGOT
IVGOT 2E	Climb on 273° - at 820, turn left - 050° - R099 WRN - IVGOT
NEDSI 1E	Climb on 273° - at 820, turn left - 030° - R074 WRN - NEDSI
SUNIB 2E	Climb on 273° - at 820, turn left - 140° - R180 WRN - SUNIB
TOTKA 2E	Climb on 273° - at 820, turn left - R263 WRN - TOTKA

Change: SIDs revised

THIS CHART IS A PART OF NAVIGRAPH NDAC AND IS INTENDED FOR FLIGHT SIMULATION USE ONLY

Varna APP	TWR	ATIS
121.0	119.5	118.075
124.6	118.9	

TL ATC AD Elev 230

SPEED
MAX 250kt below 10000

GOSLO
D33 WRN
N43 31.7
E028 26.5

EXIGA
N43 28.6
E026 53.2

EXIG1C
EXIGA 1C
43 106°
4000

1
Varna
D112.4 WRN
N43 13.9
E027 49.0

GOSL2C
GOSLO 2C
232 33
4000

TOTKA
D30.8 WRN
N43 12.3
E027 07.0

P014
4000

TOTK2C
TOTKA 2C
31 083°
4000

D215
9900
NOTAM

1
Varna
D112.4 WRN
271°
FL140
4000
091°

IVGO2C
IVGOT 2C
279 33
4000

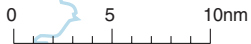
IVGOT
D32.4 WRN
N43 06.3
E028 32.2

SUNIB2C
SUNIB 2C
209 360°
4000

SUNIB
D21.1 WRN
N42 53.0
E027 46.8

Burgas TMA (C) FL175
3000

Varna TMA (C) FL175
3000



STAR

W/E 06 MAY 10

40 - 1 06 APR 10

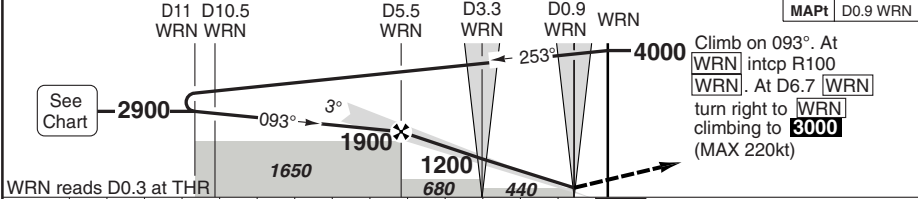
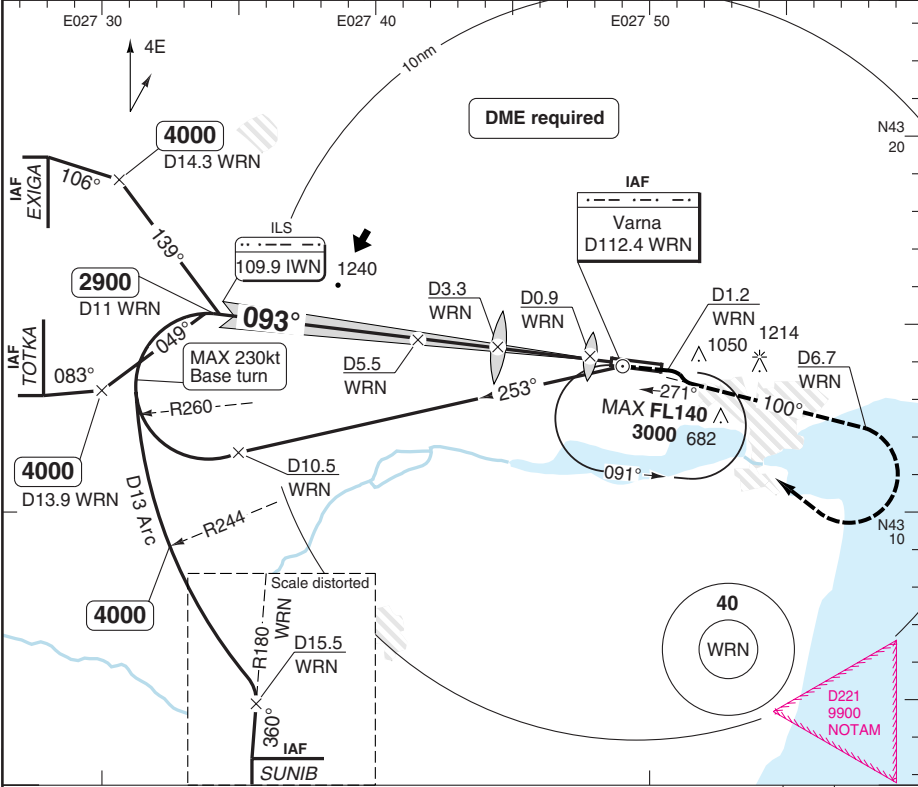
Bulgaria - LBWN / VAR

VARNA

ILS RWY 09

Varna APP 121.0 124.6	TWR 119.5 118.9	ATIS 118.075
---	-------------------------------------	------------------------

ILS 109.9 IWN	FAT 093°	TDZ Elev 207	AD Elev 230	TL ATC	TA 12000
----------------------	-----------------	---------------------	--------------------	---------------	-----------------



WRN reads D0.3 at THR

ACFT	ILS	LOC+DME	LOC+DME ^a	Circling ^b
A	420 (213) 900m	450 (250) 1200m	680 (480) 1500m	700 (470) 1.6km
B	430 (223) 900m			900 (670) 1.6km
C	440 (233) 900m	450 (250) 1600m	680 (480) 1800m	1150 (920) 5.0km
D	450 (243) 900m			1300 (1070) 5.0km

- a** If no D3.3 WRN indication.
- b** South of AD

DME WRN	3.0° ALT	LDA 2500x45 8202x147ft P 3°
8.6	2900	
7	2390	
6	2070	
5	1750	
4	1430	
3	1110	
1.7	680	
1.0	450	

GS	80	100	120	140	160
ROD 3.0°	430	540	650	750	860

© Navtech - lbwn01aiip00

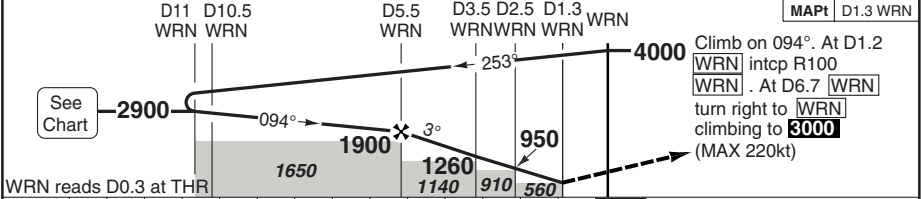
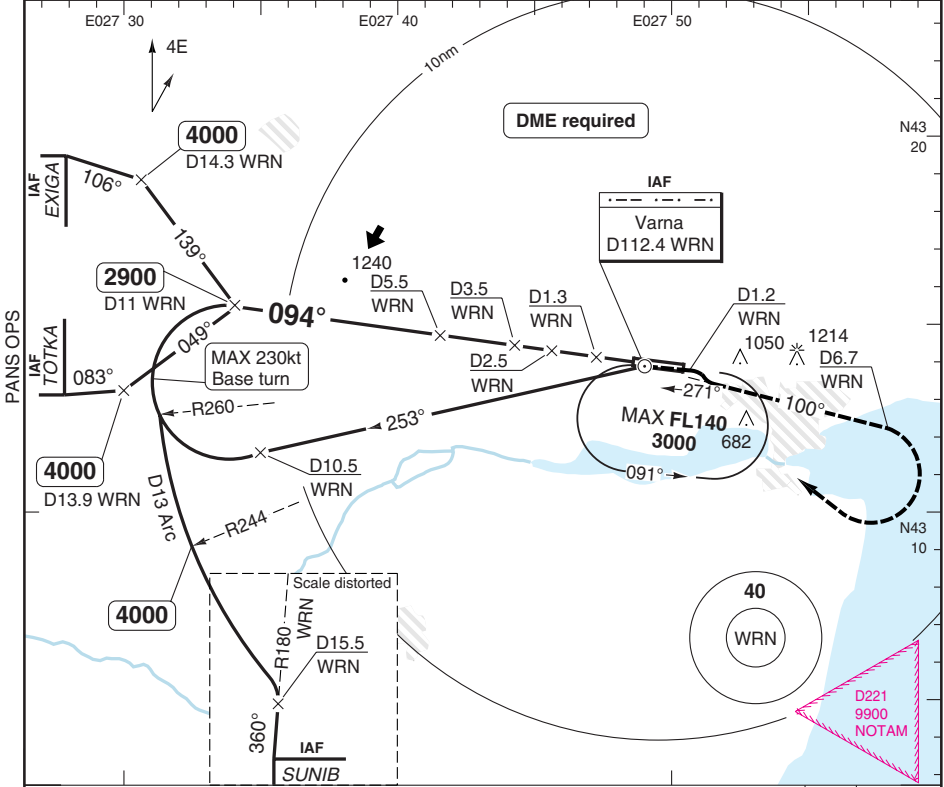
Change: New print.

VOR RWY 09

VARNA

Varna APP 121.0 124.6	TWR 119.5 118.9	ATIS 118.075
---	-------------------------------------	------------------------

VOR/DME 112.4 WRN	FAT 094°	TDZ Elev 207	AD Elev 230	TL ATC	TA 12000
--------------------------	-----------------	---------------------	--------------------	---------------	-----------------



ACFT	VOR+DME	VOR+DME	a Circling b	DME WRN	3.0° ALT	LDA 2500x45 8202x147ft P 3°
A	580 (380) 2.0km	1140 (940) 2.0km	700 (470) 2.0km	8.6	2900	
B			900 (670) 2.0km	7	2380	
C	580 (380) 2.4km	1140 (940) 2.4km	1150 (920) 5.0km	6	2060	
D			1300 (1070) 5.0km	5	1740	
				4	1420	
				3.1	1140	
				2	790	
GS	80	100	120	140	160	600
ROD 3.0°	430	540	640	750	860	

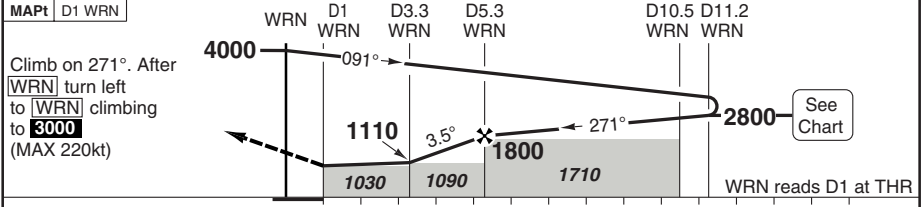
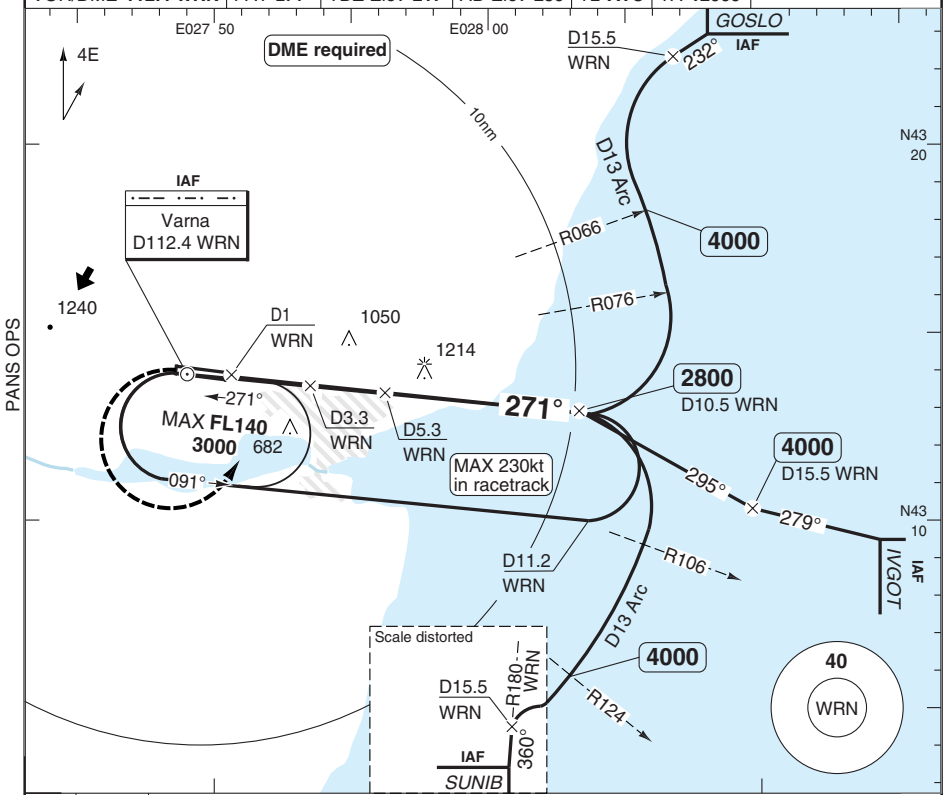
© Navtech - lbwn02aiip00

Change: New print.

THIS CHART IS A PART OF NAVIGRAPH NDAC AND IS INTENDED FOR FLIGHT SIMULATION USE ONLY

VOR RWY 27

Varna APP	TWR	ATIS				
121.0	119.5	118.075				
124.6	118.9					
VOR/DME 112.4 WRN	FAT 271°	TDZ Elev 217	AD Elev 230	TL ATC	TA 12000	



ACFT	VOR+DME	VOR+DME ^a	Circling ^b			DME WRN	3.4° ALT	LDA 2500x45 8202x147ft P 3.4°
A	1030 (820) 2.0km	1110 (900) 2.0km	700 (470) 2.0km	^a If no D3.3 WRN indication.		8.1	2800	
B	1030 (820) 2.4km	1110 (900) 2.4km	900 (670) 2.4km	^b South of AD		7	2420	
C	1030 (820) 4.4km	1110 (900) 4.4km	1150 (920) 5.0km			6	2060	
D	1030 (820) 4.8km	1110 (900) 4.8km	1300 (1070) 5.0km			5	1700	
						4	1340	
						3.4	1110	
						3.1	1030	
GS	80	100	120	140	160			
ROD 3.4°	480	600	720	840	960			

© Navtech - lbwn03aiap00

Reverse side blank

Change: New print.

THIS CHART IS A PART OF NAVIGRAPH NDAC AND IS INTENDED FOR FLIGHT SIMULATION USE ONLY

JAR-OPS Landing Minima

VARNA

The following Minima is for Public Transport aircraft and conforms to JAR-OPS1 regulations.

STRAIGHT-IN APPROACH		C				D			
R/W	Procedure	DA/ MDA QNH ft	DH/ MDH QFE ft	RVR m	RVR No ALS m	DA/ MDA QNH ft	DH/ MDH QFE ft	RVR m	RVR No ALS m
09	ILS/DME (1)	460	250	900	1300	460	250	900	1300
09	LOC/DME (1)	460	250	1200	1600	460	250	1600	1800
09	LOC without SDF (1)	690	480	1600	2000	690	480	1800	2000
09	VOR/DME (2)	590	380	2000	2400	590	380	2400	2800
09	VOR without SDF (2)	1150	940	2000	2400	1150	940	2400	2800
27	VOR/DME (2)	1040	820	4400	4800	1040	820	4800	5000
27	VOR without SDF (2)	1120	900	4400	4800	1120	900	4800	5000

Notes:

- (1) Values shown are RVR and Vis.
- (2) Values shown are Vis.

CIRCLING		C			D		
R/W	Procedure	MDA QNH ft	MDH QFE ft	Vis m	MDA QNH ft	MDH QFE ft	Vis m
All procedures (1)		1150	920	5000	1300	1070	5000

Notes:

- (1) South of aerodrome only.

TAKE-OFF		C		D	
Runway	Facilities	RVR	Vis	RVR	Vis
09,27	RCLL+REDL+Multi RVR's	150	150	200	200
09,27	RCLL+REDL	200	200	250	250
09,27	REDL and/or RCL	300	300	400	400
09,27	No Lights (HJ only)	500	500	600	600

Notes:

JAR-OPS Landing Minima

VARNA

The following Minima is for Public Transport aircraft and conforms to JAR-OPS1 regulations.

STRAIGHT-IN APPROACH		A				B			
R/W	Procedure	DA/ MDA QNH ft	DH/ MDH QFE ft	RVR m	RVR No ALS m	DA/ MDA QNH ft	DH/ MDH QFE ft	RVR m	RVR No ALS m
09	ILS/DME (1)	460	250	900	1300	460	250	900	1300
09	LOC/DME (1)	460	250	1200	1600	460	250	1200	1600
09	LOC without SDF (1)	690	480	1400	1600	690	480	1500	1600
09	VOR/DME (2)	590	380	2000	2400	590	380	2000	2400
09	VOR without SDF (2)	1150	940	2000	2400	1150	940	2000	2400
27	VOR/DME (2)	1040	820	2000	2400	1040	820	2400	2800
27	VOR without SDF (2)	1120	900	2000	2400	1120	900	2400	2800

Notes:

- (1) Values shown are RVR and Vis.
- (2) Values shown are Vis.

CIRCLING		A			B		
R/W	Procedure	MDA QNH ft	MDH QFE ft	Vis m	MDA QNH ft	MDH QFE ft	Vis m
All procedures (1)		700	470	1600	900	670	1600

Notes:

- (1) South of aerodrome only.

TAKE-OFF		A		B	
Runway	Facilities	RVR	Vis	RVR	Vis
09,27	RCLL+REDL+Multi RVR's	150	150	150	150
09,27	RCLL+REDL	200	200	200	200
09,27	REDL and/or RCL	250	250	300	300
09,27	No Lights (HJ only)	500	500	500	500

Notes: