

## Airport information:

Country: Bulgaria

City: PLOVDIV

Coordinates: N 42° 04.1', E024 51.1

Elevation: 597

Customs: Customs

Fuel: Jet A1

RFF: CAT 7

hours: H24

## Runways:

Runway 13

Takeoff length: 2500, Landing length: 2500

Runway 31

Takeoff length: 2500, Landing length: 2500

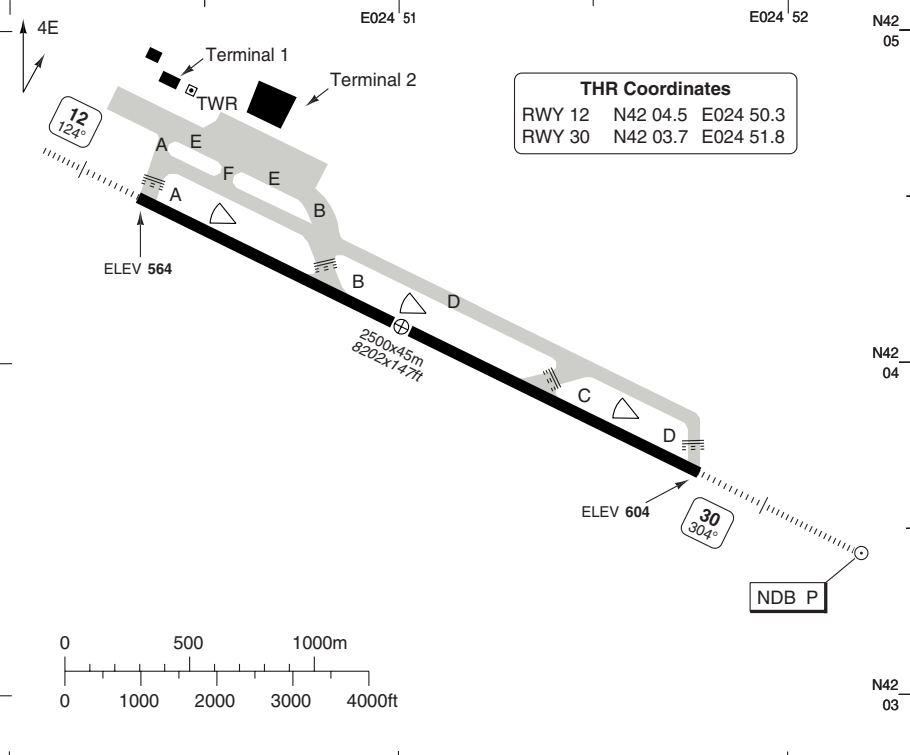
# AERODROME

# PLOVDIV

10 - 1

Plovdiv TWR  
125.5 133.6

AD Elev 604 | ARP: N42 04.1 E024 51.1 | RFF: CAT 7 | AD HR: H24



RWY	Slope	TORA m/ft	LDA m/ft	ALS	REDL	Additional
12	+0.5	2500 / 8202	2500 / 8202	H-D ①	H	P 3°
30	-0.5	2500 / 8202	2500 / 8202	H-D	H	P 3°

① 420m.

STATE		TAKE OFF MINIMA		
RWY	Facilities	RVR/Vis		
		A	B C	D
12/30	REDL + RCL	400m / 0.4km	400m / 0.4km	400m / 0.4km
	REDL	400m / 0.4km	500m / 0.5km	600m / 0.6km

© Navtech - lbpd01laorg0

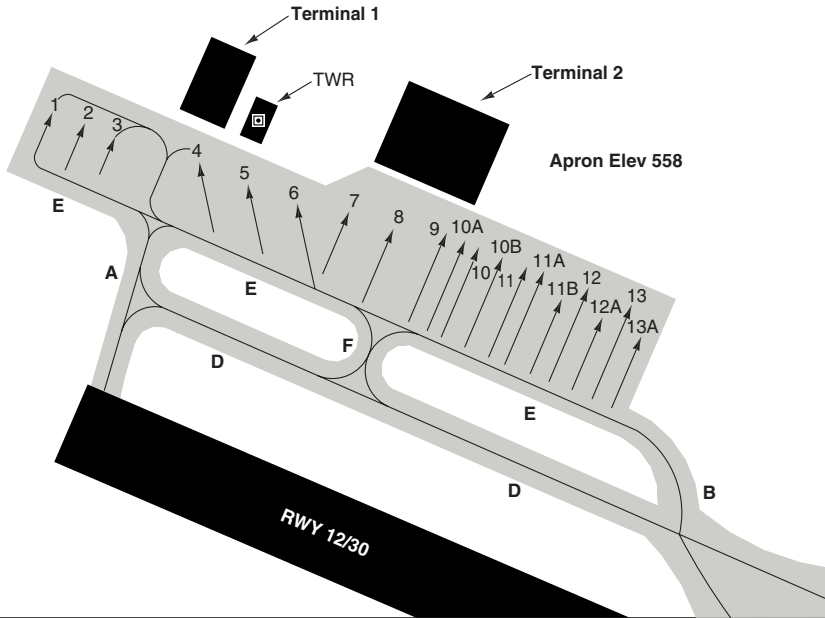
Change: AD Elev, THR Elev, SWY, minima.

**THIS CHART IS A PART OF NAVIGRAPH NDAC AND IS INTENDED FOR FLIGHT SIMULATION USE ONLY**

# AERODROME

10 - 2

Plovdiv TWR  
125.5 133.6



## GENERAL INFORMATION

**Preferential RWY:**

RWY 30: LDG.  
RWY 12: TKOF.

BTN 20 - 04 do not use more than idle reverse if possible.

© Navitech - lbpd02laorg0

Change: SWY

# SID RWY 12

Plovdiv TWR  
 125.5 133.6

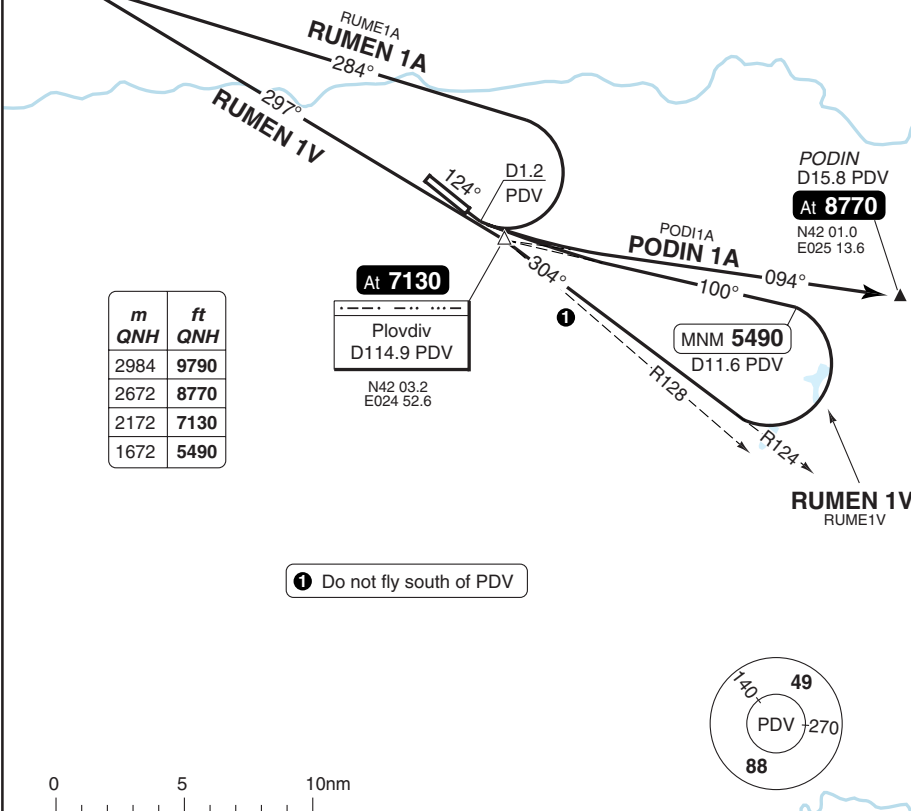
TA 9790 AD Elev 604

RUMEN  
 D29.3 PDV

**At 8770**

N42 18.3  
 E024 18.8

DEP turns MAX 205kt



m	ft
QNH	QNH
2984	9790
2672	8770
2172	7130
1672	5490

**At 7130**  
 Plovdiv  
 D114.9 PDV  
 N42 03.2  
 E024 52.6

PODIN  
 D15.8 PDV  
**At 8770**  
 N42 01.0  
 E025 13.6

MNM 5490  
 D11.6 PDV

❶ Do not fly south of PDV

❷ If unable to comply advise ATC when requesting start-up clearance.

SID	MNM Climb	Routing	Altitudes
<b>(INITIAL CLIMB)</b>		Climb on 124° - at D1.2 PDV turn left - follow SID.	
<b>PODIN 1A</b>	7% to 7130 ❷	R094 PDV - PODIN.	PODIN At <b>8770</b>
<b>RUMEN 1A</b>		284° - intcp R297 PDV - RUMEN.	RUMEN At <b>8770</b>
<b>RUMEN 1V</b>	7% to 7130 ❷	NOTE: Do not fly south of R128 PDV. R100 PDV - at D11.6 PDV turn right - 304°/R124 PDV - PDV - R297 PDV - RUMEN.	D11.6 PDV MNM 5490 PDV At <b>7130</b> RUMEN At <b>8770</b>

Change: New print

# SID RWY 30

Plovdiv TWR  
 125.5 133.6

TA 9790 AD Elev 604

RUMEN  
 D29.3 PDV

At **8810**

N42 18.3  
 E024 18.8

DEP turns MAX 205kt

30 - 2

m	ft
2984	9790
2684	8810
2184	7170
1684	5530
584	1920

At **7170**  
 Plovdiv  
 D114.9 PDV

N42 03.2  
 E024 52.6

MNM **5530**  
 D11.6 PDV

PODIN  
 D15.8 PDV

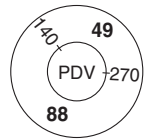
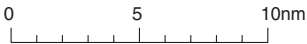
At **8810**

N42 01.0  
 E025 13.6

PODI 1V  
**PODIN 1V**

At **8810**

N42 01.0  
 E025 13.6



**ALT RESTRICTION:** Climb to **8810** or by ATC.

SID	Routing	Altitudes
<b>(INITIAL CLIMB)</b>	Climb on 304° - at D4 PDV. Follow SID.	
<b>PODIN 1V</b>	Turn right - 124° - intcp R094 PDV - PODIN.	R055 PDV At <b>1920</b> PODIN At <b>8810</b>
<b>RUMEN 1E</b>	Turn left - intcp R297 PDV - RUMEN.	RUMEN At <b>8810</b>
<b>RUMEN 1W</b>	Turn right - 124° - at D11.6 PDV turn right - 304°/R124 PDV - PDV - R297 PDV - RUMEN.	R055 PDV At <b>1920</b> D11.6 PDV MNM <b>5530</b> PDV At <b>7170</b> RUMEN At <b>8810</b> .

© Navtech - lbpd02daorg0

Change: New print

**THIS CHART IS A PART OF NAVIGRAPH NDAC AND IS INTENDED FOR FLIGHT SIMULATION USE ONLY**

Change: AD Elev

© Navtech - lbpd01aaorg0

Plovdiv TWR  
125.5 133.6

TL ATC AD Elev 604

**RUMEN**  
D29.3 PDV  
N42 18.3  
E024 18.8

m	ft
QNH	QNH
2984	9790
2684	8810
2672	8770
1384	4540
972	3190

❶ Do not cross R128 PDV

❷ RWY 12: 8770

At 3190  
D10.3 PDV

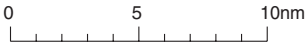
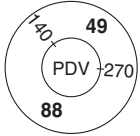
At 4540  
D11.6 PDV

IAF  
Plovdiv  
D114.9 PDV  
N42 03.2  
E024 52.6

MAVA1X  
**MAVAD 1X**  
266° 15.7

MAVAD  
D15.7 PDV  
N42 03.3  
E025 13.5

MAVAD 1B  
At 9790



STAR

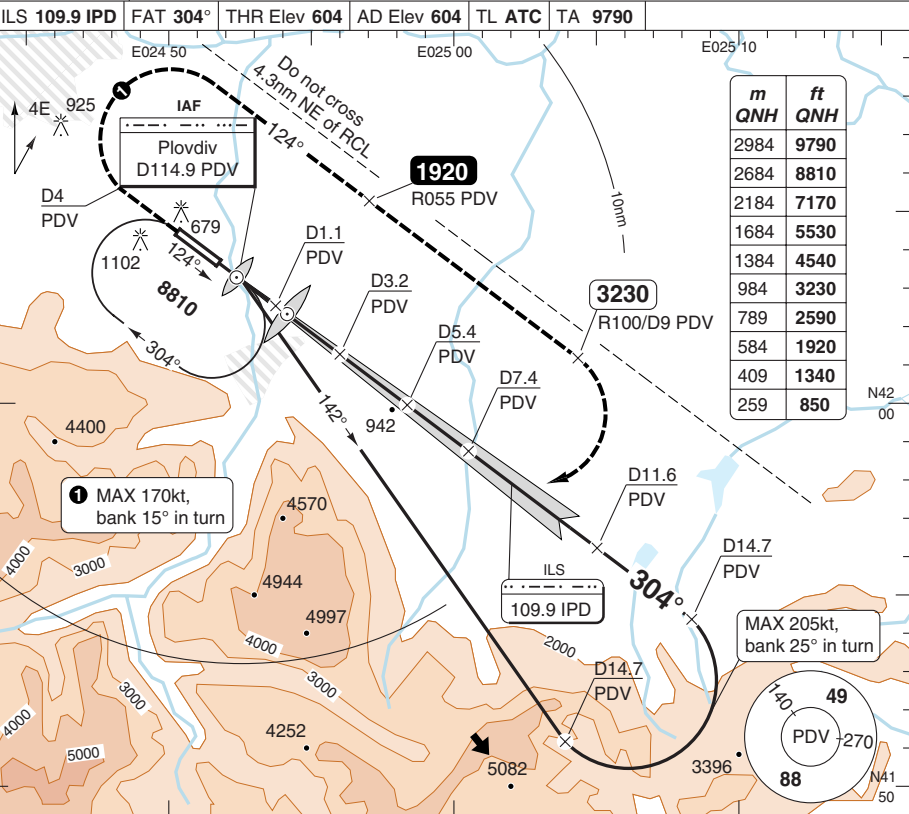
40 - 1 102 NOV 11

Bulgaria - LBPD / PDV  
PLOVDIV

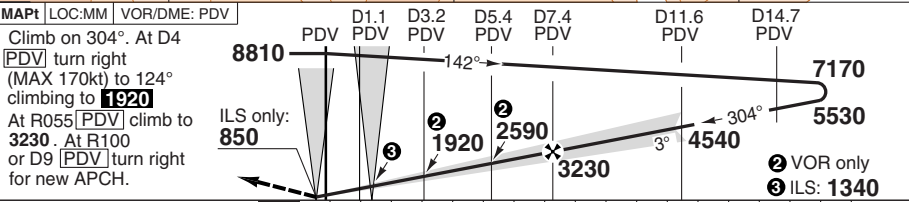
# ILS OR VOR RWY 30

# PLOVDIV

Plovdiv TWR 125.5 133.6					
ILS 109.9 IPD	FAT 304°	THR Elev 604	AD Elev 604	TL ATC	TA 9790



m	ft
2984	9790
2684	8810
2184	7170
1684	5530
1384	4540
984	3230
789	2590
584	1920
409	1340
259	850



ACFT	ILS	ILS <sup>a</sup>	LOC+DME	VOR+DME	Circling <sup>b</sup>	DME PDV ALT	3.0° ALT	LDA 2500x45 8202x147ft P 3°
A		850 (246)	900 (295)	900 (295)	1540 (935) 1.6km	11.4	4600	P 3°
B	810 (200)	800m	1000m	800m	1540 (935) 2.0km	10	4110	
C	800m				1640 (1033) 4.0km	8	3470	
D		850 (246) 1200m	900 (295) 1200m	900 (295) 1600m		6	2820	
						4	2180	
						2	1530	
						1	1210	
						0.1	900	

Change: AD Elev, THR Elev, SWY, minima. Note: Values shown are RVR/VIS

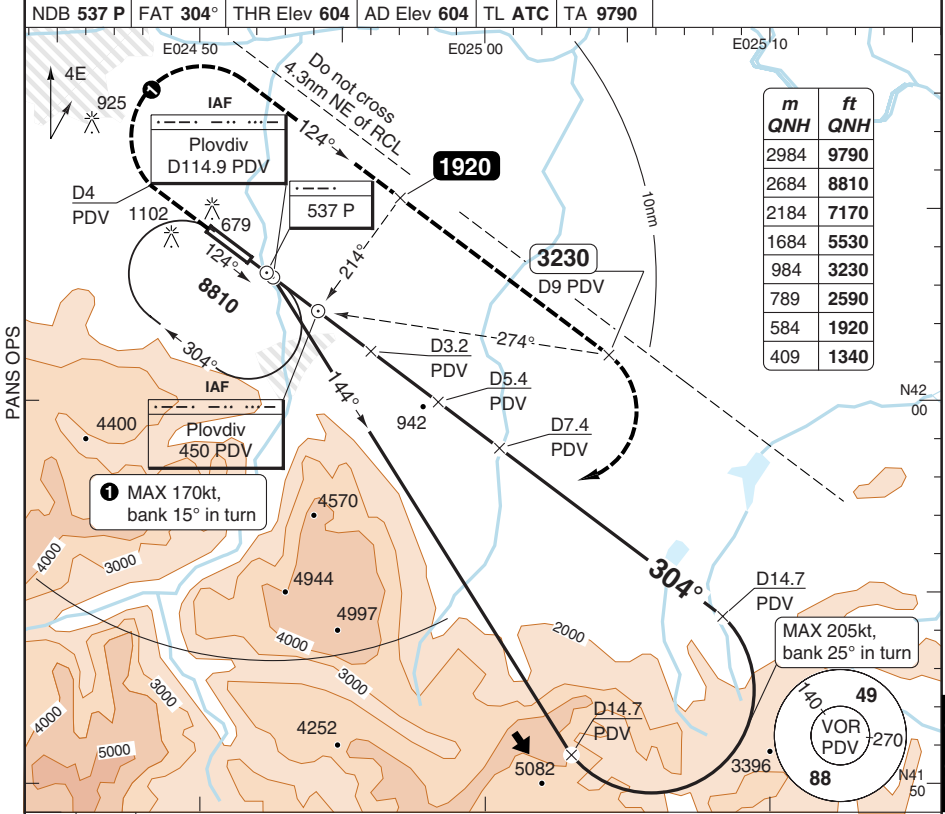
© Navtech - lbpd01iiaip00



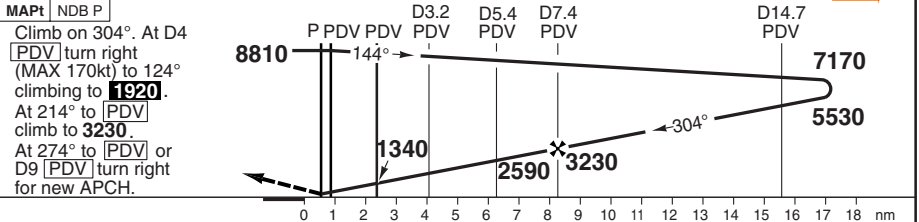
# NDB RWY 30

# PLOVDIV

Plovdiv TWR 125.5 133.6	
NDB 537 P	FAT 304°
THR Elev 604	AD Elev 604
TL ATC	TA 9790



m	ft
2984	9790
2684	8810
2184	7170
1684	5530
984	3230
789	2590
584	1920
409	1340



MAPt	NDB P	Climb on 304°. At D4 [PDV] turn right (MAX 170kt) to 124° climbing to <b>1920</b> . At 214° to [PDV] climb to <b>3230</b> . At 274° to [PDV] or D9 [PDV] turn right for new APCH.		
ACFT	<b>2NDB+DME</b>	<b>Circling <sup>a</sup></b>	<b><sup>a</sup> Northeast of AD</b>	
A	910 (300) 1200m	1540 (935) 1.6km	Note: Values shown are RVR or Vis.	
B		1540 (935) 2.0km		
C		1640 (1033) 4.0km		
D	910 (300) 1600m			
GS	100	120	140	160
ROD 3.0°	540	650	750	860
DME	3.0°	LDA 2500x45		
PDV	ALT	8202x147ft		
14.4	<b>5600</b>	P 3°		
11	<b>4420</b>			
9	<b>3780</b>			
7	<b>3130</b>			
5	<b>2490</b>			
3	<b>1850</b>			
1	<b>1210</b>			
0.1	<b>910</b>			

© Navtech - lbppd03iaip00

50 - 3

Reverse side blank

## JAR-OPS Landing Minima

PLOVDIV

The following Minima is for Public Transport aircraft and conforms to JAR-OPS1 regulations.

STRAIGHT-IN APPROACH		C				D			
R/W	Procedure	DA/ MDA QNH ft	DH/ MDH QFE ft	VIS m	VIS No ALS m	DA/ MDA QNH ft	DH/ MDH QFE ft	VIS m	VIS No ALS m
12	VOR/DME	1160	600	2800	3200	1160	600	3200	3600
12	2 NDB/DME	1180	610	3200	3600	1180	610	3600	4000
30	ILS/DME (1)(2)	800	200	800	1200	800	200	800	1400
30	ILS/DME No MM (2)	850	250	800	1200	850	250	1200	1400
30	LLZ/DME	900	300	1000	1600	900	300	1200	1800
30	VOR/DME	900	300	800	1600	900	300	1600	1800
30	NDB/DME	900	300	1200	1800	900	300	1600	2000

Notes:

(1) No ALS: DA/DH increased to 850/250.

(2) Values shown are RVR.

CIRCLING		C			D		
R/W	Procedure	MDA QNH ft	MDH QFE ft	Vis m	MDA QNH ft	MDH QFE ft	Vis m
All procs (1)		1630	1040	4000	1630	1040	4000

Notes:

(1) Prohibited southwest of AD.

TAKE-OFF		C		D	
Runway	Facilities	RVR	Vis	RVR	Vis
12/30	REDL and/or RCL	400	-	400	-
12/30	Nil (Day only)	500	-	500	-

Notes:

## JAR-OPS Landing Minima

PLOVDIV

The following Minima is for Public Transport aircraft and conforms to JAR-OPS1 regulations.

STRAIGHT-IN APPROACH		A				B			
R/W	Procedure	DA/ MDA QNH	DH/ MDH QFE	VIS	VIS No ALS	DA/ MDA QNH	DH/ MDH QFE	VIS	VIS No ALS
		ft	ft	m	m	ft	ft	m	m
12	VOR/DME	1160	600	2000	2400	1160	600	2000	2400
12	2 NDB/DME	1180	610	2000	2400	1180	610	2000	2400
30	ILS/DME (1)(2)	800	200	800	1200	800	200	800	1200
30	ILS/DME No MM (2)	850	250	800	1200	850	250	800	1200
30	LLZ/DME	900	300	1000	1500	900	300	1000	1500
30	VOR/DME	900	300	800	1600	900	300	800	1600
30	NDB/DME	900	300	1200	1600	900	300	1200	1600

Notes:

(1) No ALS: DA/DH increased to 850/250.

(2) Values shown are RVR.

CIRCLING		A			B		
R/W	Procedure	MDA QNH	MDH QFE	Vis	MDA QNH	MDH QFE	Vis
		ft	ft	m	ft	ft	m
All procs (1)		1540	940	1600	1540	940	2000

Notes:

(1) Prohibited southwest of AD.

TAKE-OFF		A		B	
Runway	Facilities	RVR	Vis	RVR	Vis
12/30	REDL and/or RCL	400	-	400	-
12/30	Nil (Day only)	500	-	500	-

Notes: