

Airport information:

Country: United States of America

City: TALLAHASSEE RGNL, FL

Coordinates: N 30° 23.8', W 084° 21.0'

Elevation: 81

Customs:

Fuel: 100LL, Jet A

RFF: ARFF C

hours: H24.

Runways:

Runway 09

Takeoff length: 2438, Landing length: 2438

Runway 18

Takeoff length: 1852, Landing length: 1852

Runway 27

Takeoff length: 2438, Landing length: 2438

Runway 36

Takeoff length: 1852, Landing length: 1852

T
A
L
L
A
H
A
S
S
E
E

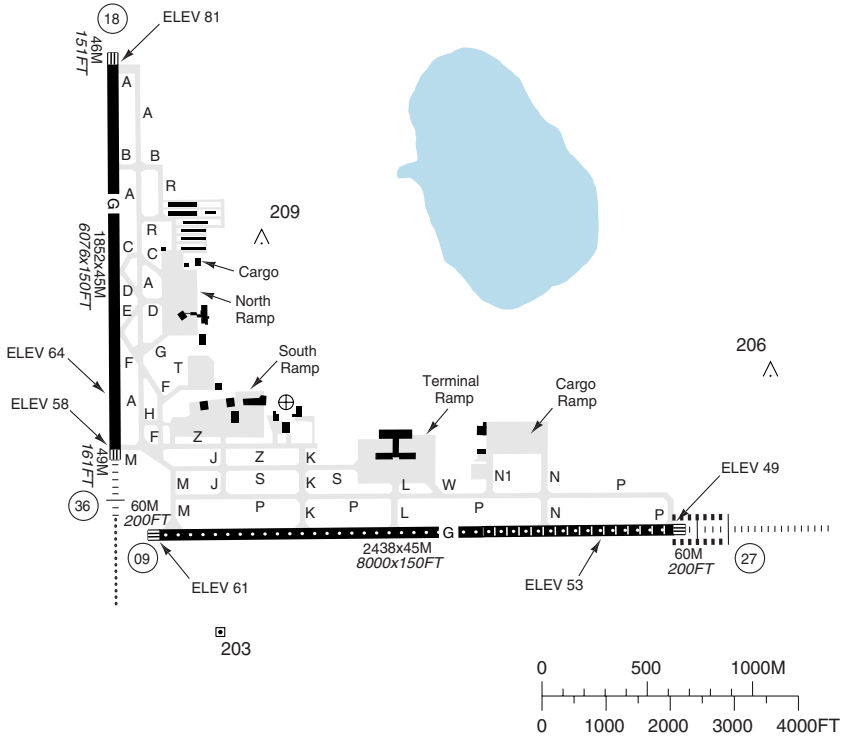
R
E
G
I
O
N
A
L

F
L

U
S
A

| RWY | QFU | APL | THL | RWL | SLOPE |
|-----|-----|--------|-----|-----|-------|
| 09 | 093 | - a | H | H | -0.2 |
| 27 | 273 | HL-G b | H | H | +0.2 |
| 18 | 183 | - a | H | H | -0.4 |
| 36 | 003 | ML-I c | H | H | +0.4 |

- a REIL, PAPI 3.00L
- b Preset MIL, PAPI 3.00
- c PAPI L



| | | | |
|------|-------------------|--------------------|------------------------|
| TKOF | RWY | ALL ✕ | |
| | CLG/RVR or VIS FT | 2 ENG: 0/5000 or 1 | 3-4 ENG: 0/2400 or 1/2 |

WARNING

Watch out for birds.

Profile of RWY 09/27 restricts visibility from THR 09 to THR 27.

SPEED

MAX IAS 250KT or MNM safe speed if greater below 10000.

TWY RESTRICTION

Movement area of TWY Z begins at the intersection of TWY J and proceeds east to the intersection of TWY K. TWY Z is not used by carrier operators.

TWY Z from TWY M to the ramp is open to ACFT with wingspan of 15M/ 50FT or less.

RFF: Index C.

TAXI

Be alert to RWY crossing CLR. Readback of all RWY holding instructions is required.

ARCAL: 118.700 Type K (See LEGENDS)

- ✕ Authorized operators: 0/1600 or 1/4
For conditions see USA RAR.

| Circling | | |
|----------|--------|--------|
| C | 1090/3 | (1009) |
| D | 1090/3 | (1009) |

Change: New

TERPS

Tallahassee
 ATIS 119.450
 APP/DEP 128.700 181°-360° * 135.800 001°-180°
 133.850 11-04
 135.325 (Jax Center) 04-11

TLH - KTLH

2

20 JAN 08

ILS - 36

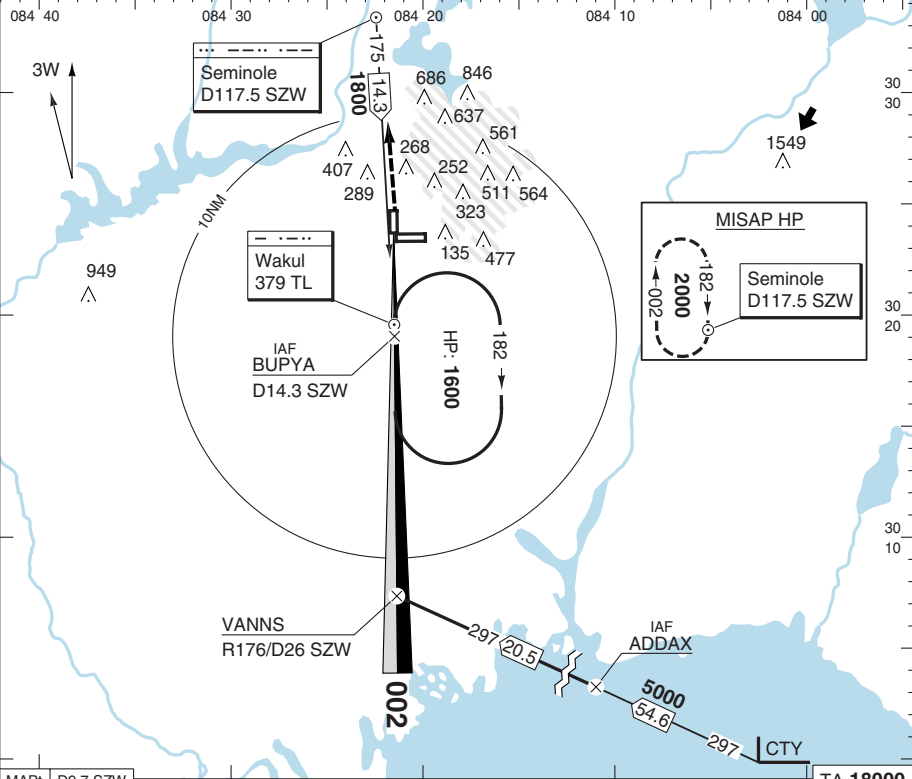
T
A
L
L
A
H
A
S
S
E
E

R
E
G
I
O
N
A
L

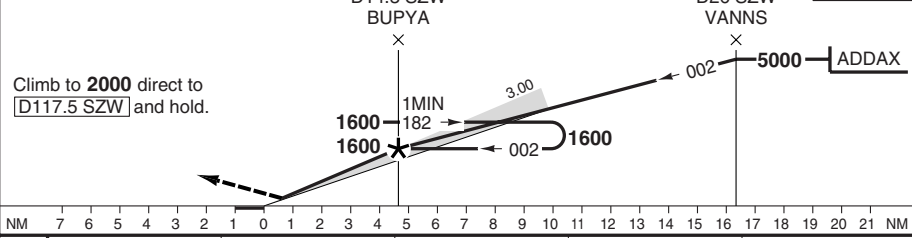
F
L
U
S
A

ILS 110.3 ITLH .. - - - - - 002° GP 3.00 TCH 46

PAPIL
 G
 LDG 1852x45M/6076x150FT+0.4



MAPt D9.7 SZW D14.3 SZW BUPYA D26 SZW VANNS TA 1800

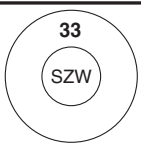


NM 7 6 5 4 3 2 1 0 1 2 3 4 5 6 7 8 9 10 11 12 13 14 15 16 17 18 19 20 21 NM

ROD 90KT 490 100KT 540 120KT 650 140KT 760 160KT 870

| SZW | 3.0° ALT | STATE | ILS | LLZ+DME | SRE | |
|-------|----------|---------|-----------|-----------|-----------|--|
| D24.8 | - 5000 | ACFT | C D | C D | C D | |
| D21 | - 3770 | MIN | 270 (200) | 460 (396) | 460 (396) | |
| D19 | - 3120 | RVR/VIS | 2400 | 3300 4500 | 4000 4500 | |
| D17 | - 2480 | APL U/S | 4000 | 6000 1¼ | 6000 1¼ | |
| D15 | - 1830 | | | | | |
| D13 | - 1180 | | | | | |
| D11 | - 540 | | | | | |

NOTE
 Simultaneous reception at
 ITLH and DME SZW required.



TDZ ELEV 64 FT/AD ELEV 81 FT Change: New

THIS CHART IS A PART OF NAVIGRAPH NDAC AND IS INTENDED FOR FLIGHT SIMULATION USE ONLY

AMD 24

© European Aeronautical Group - ktlh021basq0 - Y - P

T
A
L
L
A
H
A
S
S
E
E

R
E
G
I
O
N
A
L

F
L
U
S
A

Tallahassee TLH - KTLH **3** 20 JAN 08 **VOR - 18**

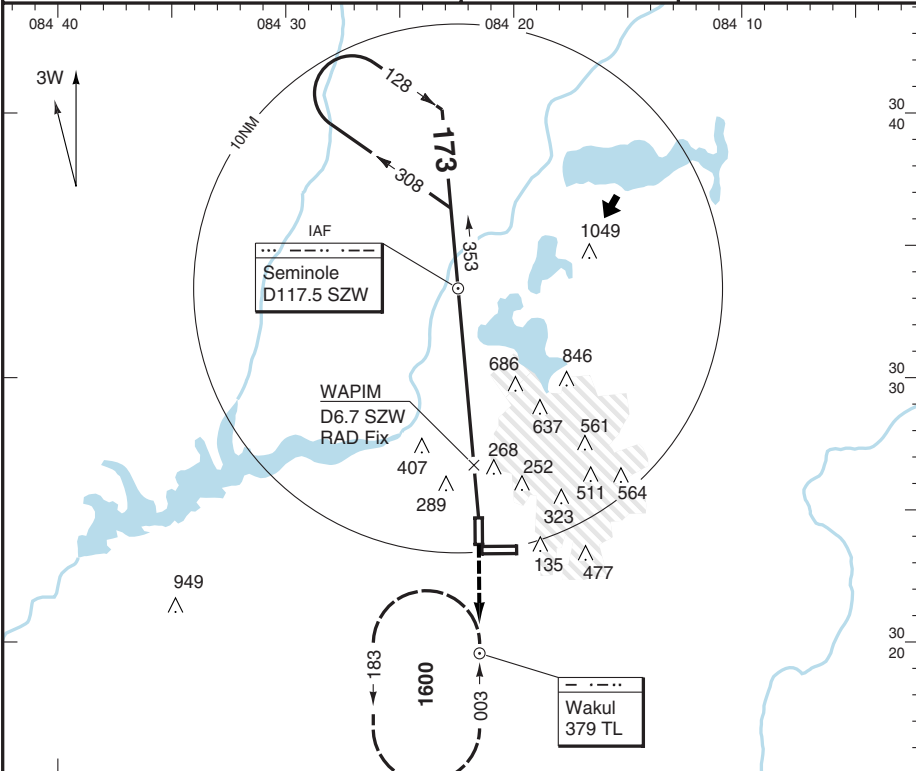
ATIS 119.450 GND 121.900
 APP/DEP 128.700 181°-360° * 135.800 001°-180° CLR 126.650

133.850 11-04
 135.325 (Jax Center) 04-11
 TWR 118.700 11-04

TCH 46 LDG 1852x45M/6076x150FT/-0.4

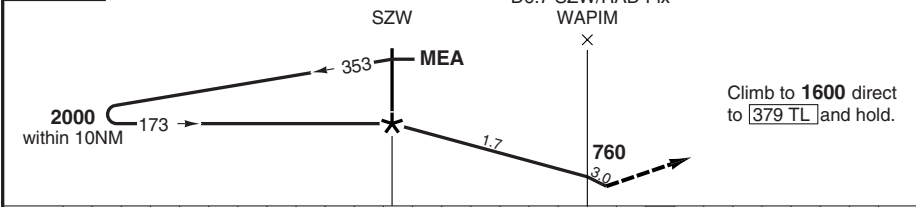
PAPI 3.00L
 G

TERPS



AMD 11

TA 18000 MAPt D8.7 SZW / THR



Climb to 1600 direct to [379 TL] and hold.

NM 20 19 18 17 16 15 14 13 12 11 10 9 8 7 6 5 4 3 2 1 0 1 2 3 4 5 6 7 8 NM

VOR: FAF-MAPt/ROD 90KT 5:48/480 100KT 5:13/530 120KT 4:21/640 140KT 3:43/740 160KT 3:16/850

| SZW | 3.0° ALT | STATE | | VOR+WAPIM | | VOR | | SRE | |
|------|----------|---------|-----|-----------|-----|-------|-----|-------|--|
| | | ACFT | C | D | C | D | C | D | |
| D2.8 | - 2000 | | | | | | | | |
| D4 | - 1610 | MIN | 540 | (459) | 760 | (679) | 560 | (479) | |
| D5 | - 1300 | VIS | 1¼ | 1½ | 2 | 2¼ | 1¼ | 1½ | |
| D6 | - 980 | APL U/S | 1¼ | 1½ | 2 | 2¼ | 1¼ | 1½ | |
| D7 | - 670 | | | | | | | | |



NOTE
ADF required.

© European Aeronautical Group - ktlh03i@esqo

TERPS

Tallahassee
 ATIS 119.450
 APP/DEP 128.700 181°-360° * 135.800 001°-180°
 133.850 11-04
 135.325 (Jax Center) 04-11
 TWR 118.700 11-04

TLH - KTLH

4

20 JAN 08

VOR - 36

GND 121.900
 CLR 126.650

PAPIL

G

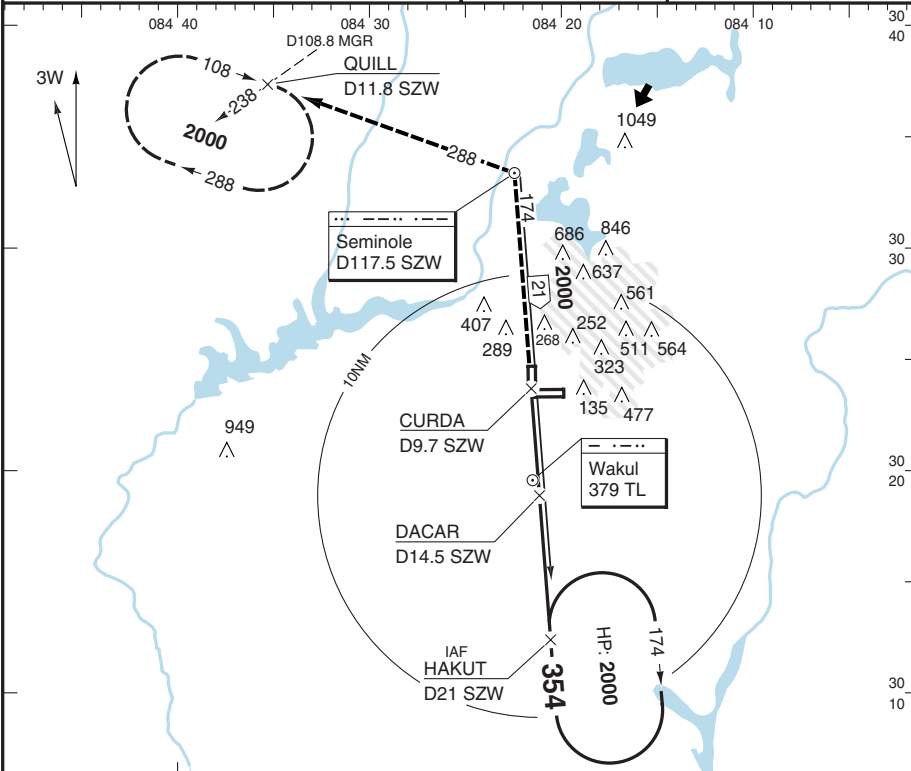
LDG 1852x45M/6076x150FT+0.4

TCH 55

T
A
L
L
H
A
S
S
E
E

R
E
G
I
O
N
A
L

F
L
U
S
A



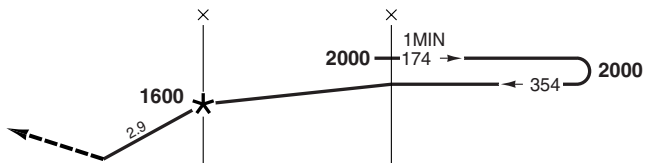
MAPt CURDA / D9.7 SZW

D14.5 SZW
DACAR

D21 SZW
HAKUT

TA 18000

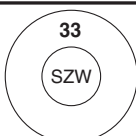
Climb to **2000** direct to **D117.5 SZW** and then via **R288 [SZW]** to **QUILL** and hold.



NM 9 8 7 6 5 4 3 2 1 0 1 2 3 4 5 6 7 8 9 10 11 12 13 14 15 16 17 18 19 NM

| | | | | | | | | | | |
|-----|------|-----|-------|-----|-------|-----|-------|-----|-------|-----|
| ROD | 90KT | 470 | 100KT | 520 | 120KT | 630 | 140KT | 730 | 160KT | 830 |
|-----|------|-----|-------|-----|-------|-----|-------|-----|-------|-----|

| SZW | 2.9° ALT | STATE | | VOR+DME | | SRE | |
|-------|----------|---------|------|---------|------|-------|--|
| | | ACFT | C | D | C | D | |
| D15.8 | - 2000 | | | | | | |
| D15 | - 1760 | MIN | 500 | (436) | 460 | (396) | |
| D14 | - 1450 | RVR/VIS | 6000 | 1½ | 4000 | 4500 | |
| D13 | - 1140 | APL U/S | 1% | 2 | 6000 | 1% | |
| D12 | - 830 | | | | | | |
| D11 | - 520 | | | | | | |



TDZ ELEV 64 FT/AD ELEV 81 FT Change: New

THIS CHART IS A PART OF NAVIGRAPH NDAC AND IS INTENDED FOR FLIGHT SIMULATION USE ONLY

© European Aeronautical Group - klfh04jbasq0 - Y - P

AMD O

T
A
L
L
A
S
S
E
E

R
E
G
I
O
N
A
L

F
L
U
S
A

TLH - KTLH

5

20 JAN 08

NDB - 36

TERPS

AMD 20

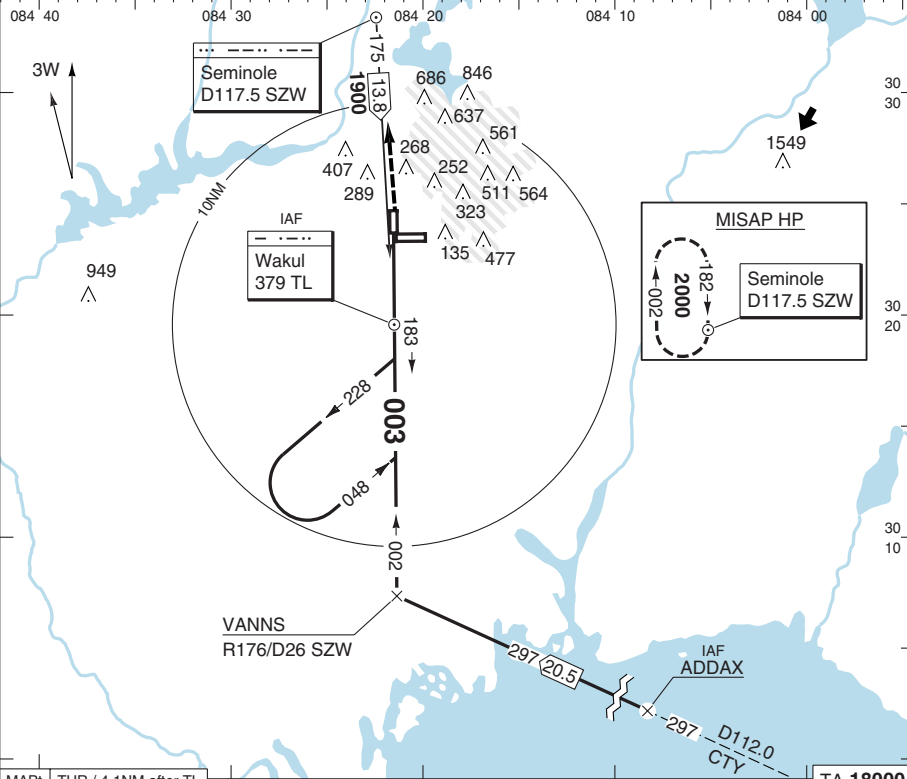
© European Aeronautical Group - ktlh05i|basq0

Tallahassee
 ATIS 119.450
 APP/DEP 128.700 181°-360° * 135.800 001°-180°
 133.850 11-04
 135.325 (Jax Center) 04-11
 TWR 118.700 11-04

GND 121.900
 CLR 126.650

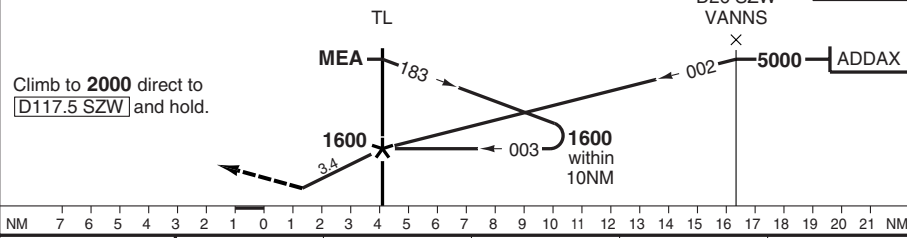
PAPIL
 G
 LDG 1852x45M/6076x150FT+0.4

TCH 55



MAPt THR / 4.1NM after TL

TA 18000

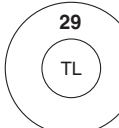


Climb to 2000 direct to D117.5 SZW and hold.

NM 7 6 5 4 3 2 1 0 1 2 3 4 5 6 7 8 9 10 11 12 13 14 15 16 17 18 19 20 21 NM

NDB: FAF-MAPt/ROD 90KT 2:44/550 100KT 2:28/610 120KT 2:03/730 140KT 1:45/850 160KT 1:32/970

| STATE | NDB | | SRE | |
|---------|------|-------|------|-------|
| ACFT | C | D | C | D |
| MIN | 540 | (476) | 460 | (396) |
| RVR/VIS | 6000 | 1½ | 4000 | 4500 |
| APL U/S | 1¼ | 1½ | 6000 | 1¼ |



TDZ ELEV 64 FT/AD ELEV 81 FT Change: New

THIS CHART IS A PART OF NAVIGRAPH NDAC AND IS INTENDED FOR FLIGHT SIMULATION USE ONLY