

Airport information:

Country: United States of America

City: SAINT PETERSBURG-CLEARWATER INTL, FL

Coordinates: N 27° 54.6', W 082° 41.3'

Elevation: 8

Customs: Customs

Fuel: 100, Jet A, Jet A1+

RFF: ARFF C

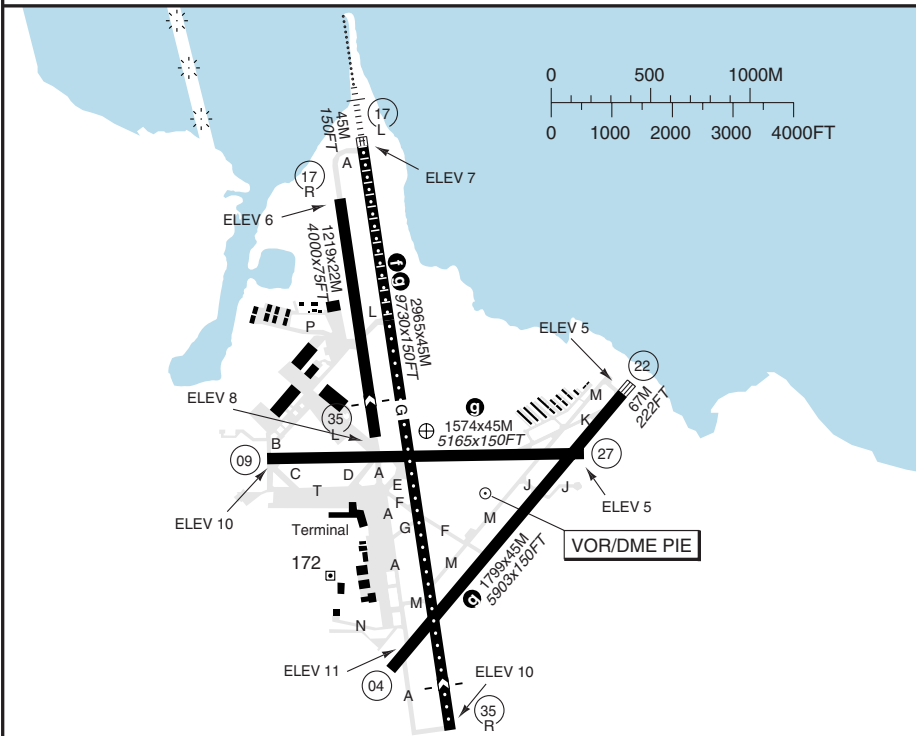
hours: H24.

Runways:

S
T
P
E
T
E
R
S
B
U
R
G
C
L
E
A
R
W
A
T
E
R
I
N
T
L
F
L
U
S
A

RWY	QFU	APL	THL	RWL	SLOPE		RWY	QFU	APL	THL	RWL	SLOPE	
04	044	- a	ML	ML	-0.1	a REIL, PAPI 3.00L	17L	175	ML-I	d	HL	HL	0
22	224	- a	ML	ML	+0.1	b REIL, PAPI 3.50L	35R	355	- d	HL	HL	0	
09	092	- b	ML	ML	-0.1	c REIL, AVASIS 3.00R	17R	175	-	-	-	-	0
27	272	- c	ML	ML	+0.1	d PAPI 3.00L	35L	355	- e	-	-	-	0
						e PAPI 4.00L							
						f Avbl length:							

RWY 17L TKOF/LDG 2798M/9180FT
 RWY 35R TKOF 2941M/9650FT, LDG 2657M/8720FT



TKOF	RWY	ALL	x y
	CLG/RVR or VIS FT	2 ENG: 0/5000 or 1	3-4 ENG: 0/2400 or 1/2

WARNING
 Watch out for birds.
 Do not mistake highwaylights N of AD for RWY lights.

SPEED
 MAX IAS 250KT or MNM safe speed if greater below 10000.

TAXI
 Be alert to RWY crossing CLR. Readback of all RWY holding instructions is required.
 RWY 17R/35L used as lighted TWY A during night.
 TWY T west of TWY C is restricted to ACFT with wingspan of less than 14.9M/49FT

ARCAL: 118.300 Type K (See LEGENDS)

RFF: Index C

d LAND AND HOLD SHORT OPERATIONS

LDG RWY	avbl DIST from LDG THR	to RWY INT
04	1306M/4286FT	09/27
09	1442M/4733FT	04/22
17L	2303M/7557FT	04/22
22	1375M/4514FT	17L/35R
35R	1037M/3405FT	09/27

x RWY 09
 MNM climb gradient of 6.3% (380FT/NM) to 300FT required. Otherwise 400/1 applies.

y Authorized operators:

17L/35R:	0/1600 or 1/4
For conditions see	
USA RAR.	

Circling	
C	1020/3 (1009)
D	1020/3 (1009)

© European Aeronautical Group - kpie001@esqg.com

EU OPS Landing Minima Clearwater INTL **ST.PETERSBURG**

This EU OPS minima is mandatory. The minima on all pages conforms to JAR-OPS regulations and should not be used.

TERPS		TAKE OFF MINIMA	
RWY	Facilities	RVR/VIS	
		2 ENG	3-4 ENG
17L	RCLL + HREDL + Multiple RVR	500ft	
	RCLL or HREDL + RCL + Multiple RVR	1000ft	
	HREDL or RCLL or RCL + Multiple RVR	TDZ 1200ft Rollout 1000ft	
04/22 a	HREDL or RCLL or RCL	1600ft / ¼sm	
09/27	Adequate vis ref	¼sm	
35R	Standard minima	5000ft / 1sm	2400ft / ½sm

a RWY 22: MNM Climb Gradient 3.8% (230ft/nm) to **300**, otherwise **200ft / 1¼ sm**.
Take-off must occur no later than **1700** from DER.

ILS RWY 17L

ACFT	CAT II	SA ILS	ILS	LOC+JINPI	LOC	Circling a
STATE	C					620 (600) <i>1½sm</i>
	D	RA 107 <i>1200ft</i>	RA 157 <i>1400ft</i>	210 (200) <i>1800ft</i>	280 (273) <i>2400ft</i>	520 (513) <i>5500ft</i>
						720 (700) <i>2½sm</i>

a Authorisation required, otherwise **1020** (1000) *3sm*

ILS RWY 35R

ACFT	ILS+DME	LOC+DME	Circling a
STATE	C		620 (600) <i>1½sm</i>
	D	210 (200) <i>¾sm</i>	380 (370) <i>1sm</i>
			720 (700) <i>2½sm</i>

a Authorisation required, otherwise **1020** (1000) *3sm*

VOR RWY 17L (VOR+DME)

ACFT	VOR+DME	Circling a
STATE	C	620 (600) <i>1½sm</i>
	D	540 (533) <i>5500ft</i>
		720 (700) <i>2½sm</i>

a Authorisation required, otherwise **1020** (1000) *3sm*

VOR RWY 04

ACFT	VOR+JULSO	VOR a	Circling a b	Circling b
STATE	C		620 (600) <i>1½sm</i>	1000 (989) <i>3sm</i>
	D	480 (469) <i>1¾sm</i>	1000 (989) <i>3sm</i>	720 (700) <i>2½sm</i>

b Authorisation required, otherwise **1020** (1000) *3sm*

VOR RWY 35R

ACFT	VOR+BLOOP	VOR	Circling a
STATE	C		620 (600) <i>1½sm</i>
	D	460 (450) <i>1¾sm</i>	640 (630) <i>1¾sm</i>
			720 (700) <i>2½sm</i>

a Authorisation required, otherwise **1020** (1000) *3sm*
b After VOR: **650** (630) *1¾sm*

© Navitech - kpie01mbasa0

Reverse side blank

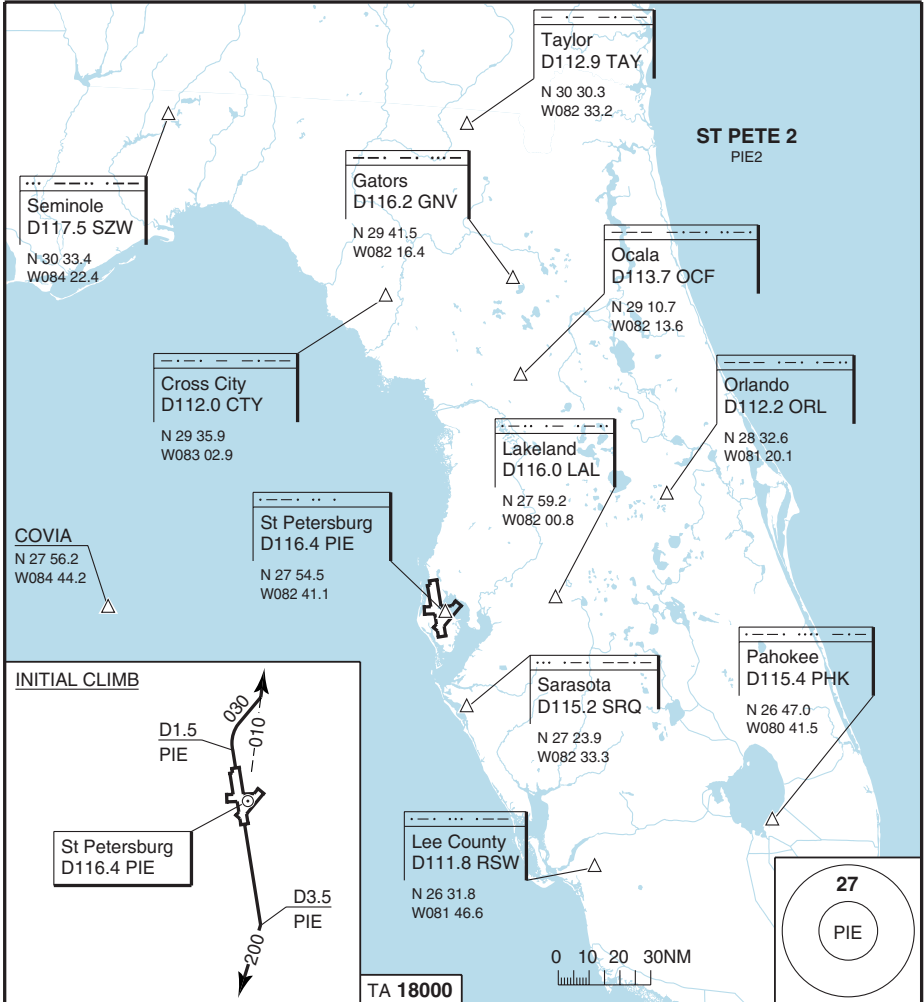
Change: New spec.

S
T
P
E
T
E
R
S
B
U
R
G

C
L
E
A
R
W
A
T
E
R

I
N
T
L

F
L
U
S
A



NOTE

DME required.
Expect CLR to filed ALT/FL 10MIN after DEP.

SPEED

MAX IAS 250KT or MNM safe speed if greater below 10000.

ALT RESTRICTION

Maintain 1600.

INITIAL CLIMB

RWY 17L/R: Climb on RWY HDG - at D3.5 PIE
turn R to HDG 200° or as assigned...

RWY 35L/R: Climb on RWY HDG - at D1.5 PIE
turn R to HDG 030° - R010 PIE...

ST PETE 2

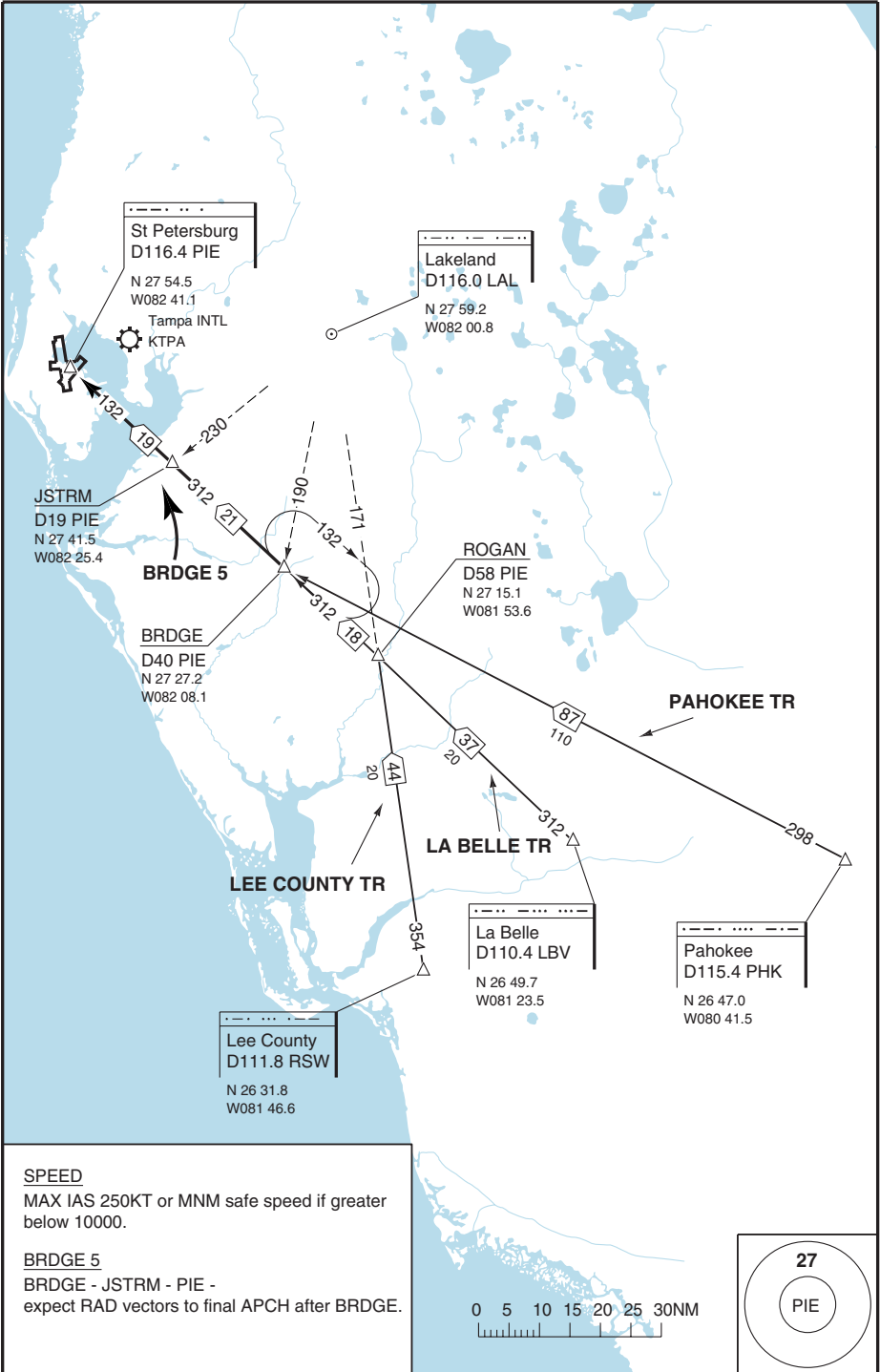
...expect RAD vectors to join filed/assigned route.

© European Aeronautical Group - kpie09dbasq0 - W - P

Reverse side blank

Change: New

THIS CHART IS A PART OF NAVIGRAPH NDAC AND IS INTENDED FOR FLIGHT SIMULATION USE ONLY



© European Aeronautical Group - kpie01abasa0 - G - P

Change: New

THIS CHART IS A PART OF NAVIGRAPH NDAC AND IS INTENDED FOR FLIGHT SIMULATION USE ONLY

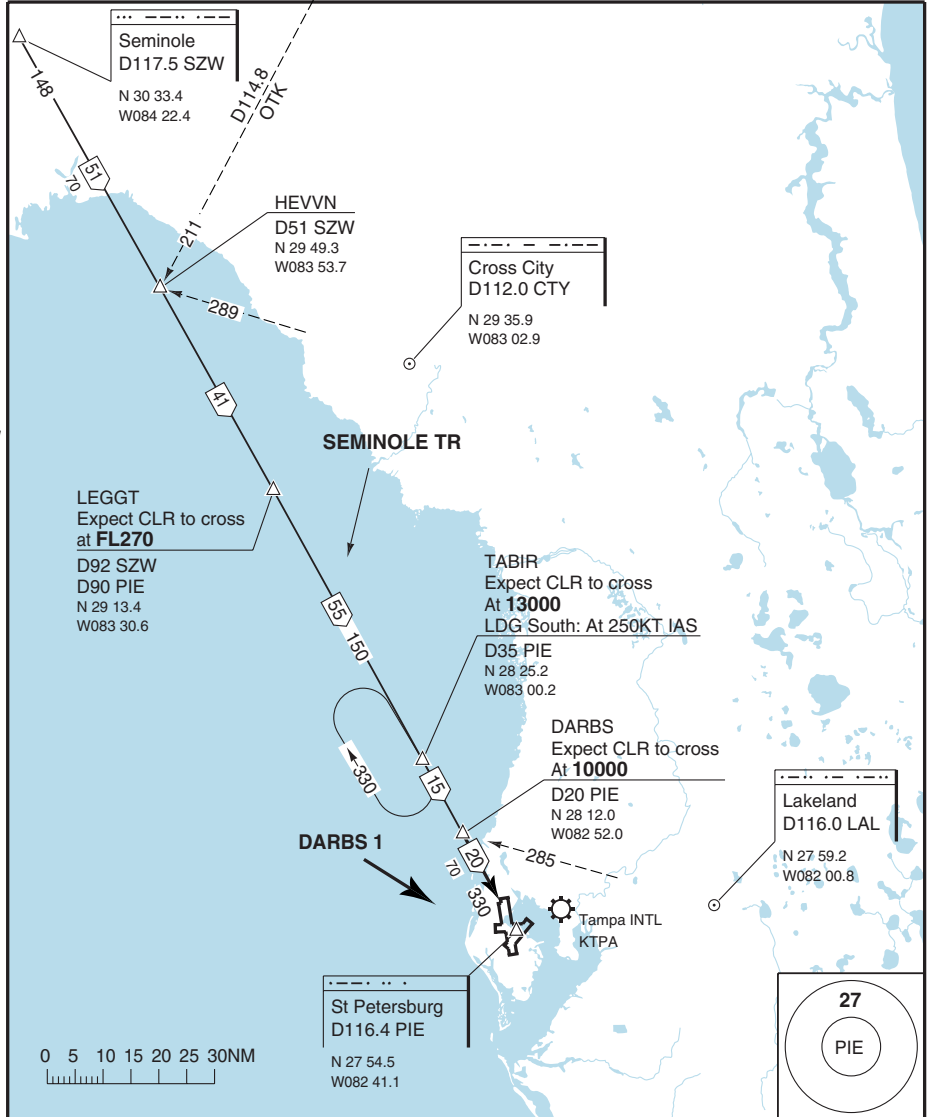
S
T
P
E
T
E
R
S
B
U
R
G

C
L
E
A
R
W
A
T
E
R

I
N
T
L

F
L

U
S
A



© European Aeronautical Group - kpi02a@basao

SPEED

MAX IAS 250KT or MNM safe speed if greater below 10000.

DARBS 1

DARBS - PIE - expect RAD vectors to final APCH after DARBS.

Change: New

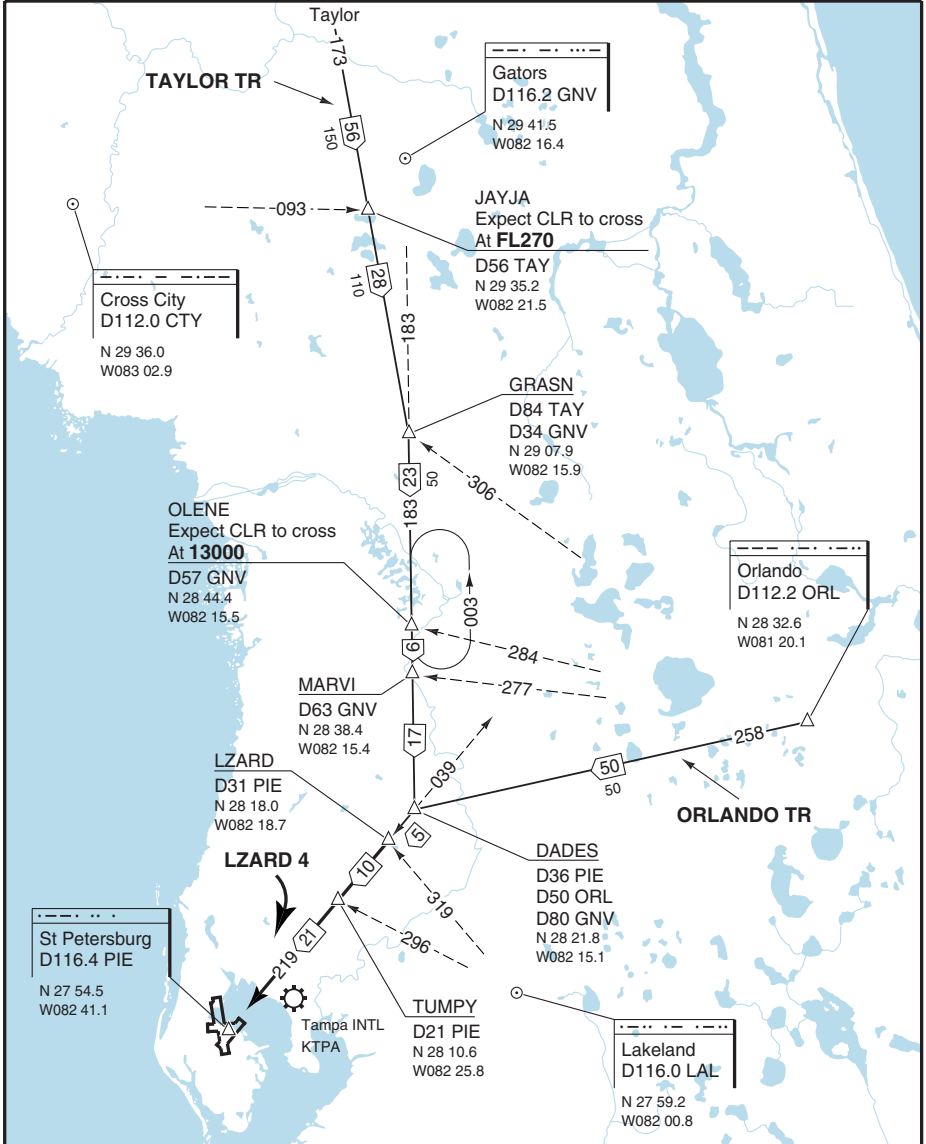
S
T
P
E
T
E
R
S
B
U
R
G

C
L
E
A
R
W
A
T
E
R

I
N
T
L

F
L

U
S
A



NOTE

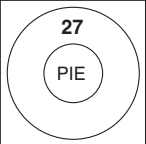
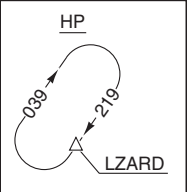
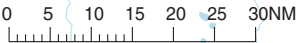
D112.9 TAY DME required at GRASN.

SPEED

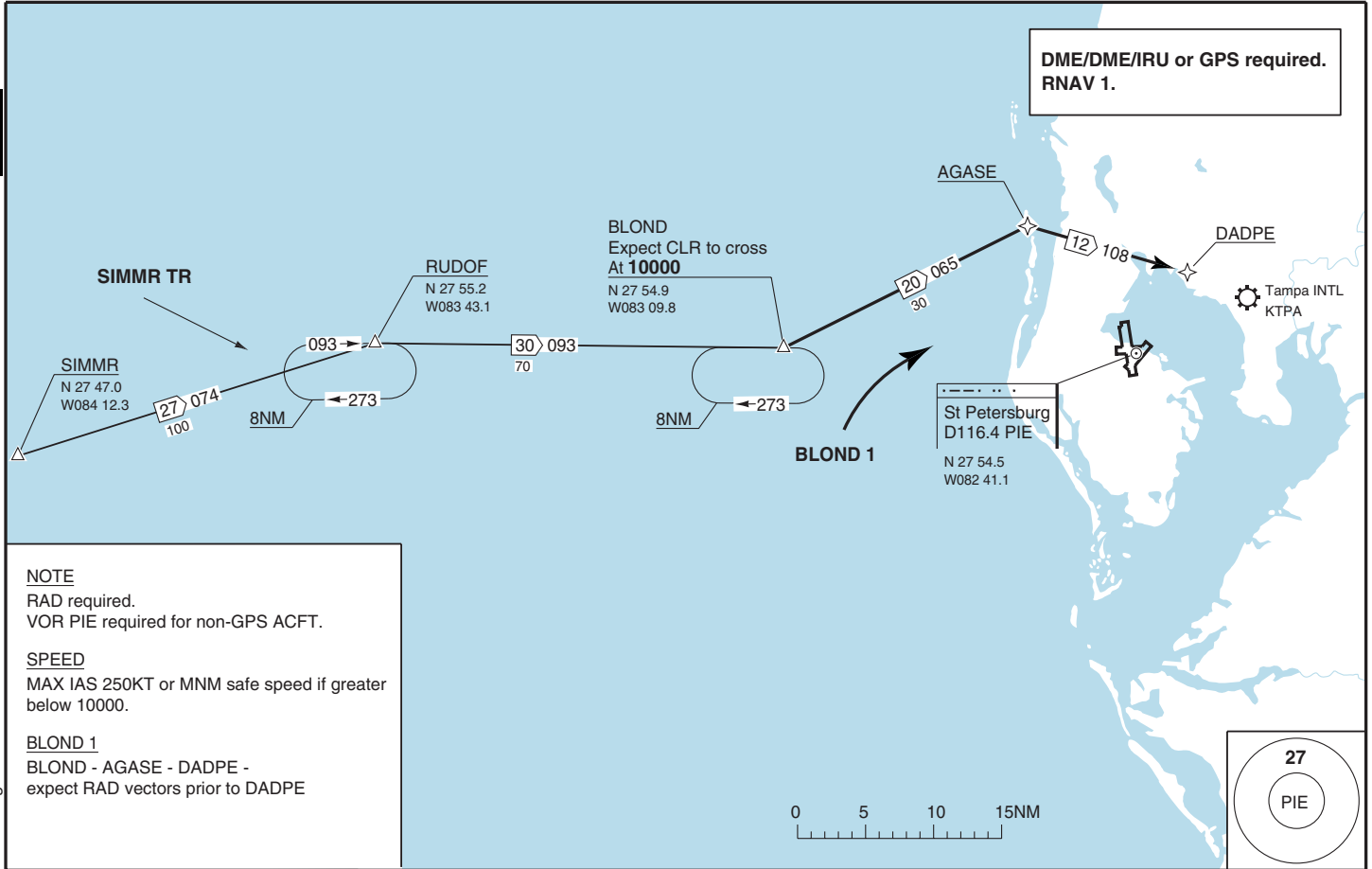
MAX IAS 250KT or MNM safe speed if greater below 10000.

LZARD 4

LZARD - TUMPY - PIE - expect RAD vectors to final APCH after LZARD.



© European Aeronautical Group - kpie03abasa0 - G - P



NOTE
 RAD required.
 VOR PIE required for non-GPS ACFT.

SPEED
 MAX IAS 250KT or MNM safe speed if greater below 10000.

BLOND 1
 BLOND - AGASE - DADPE -
 expect RAD vectors prior to DADPE

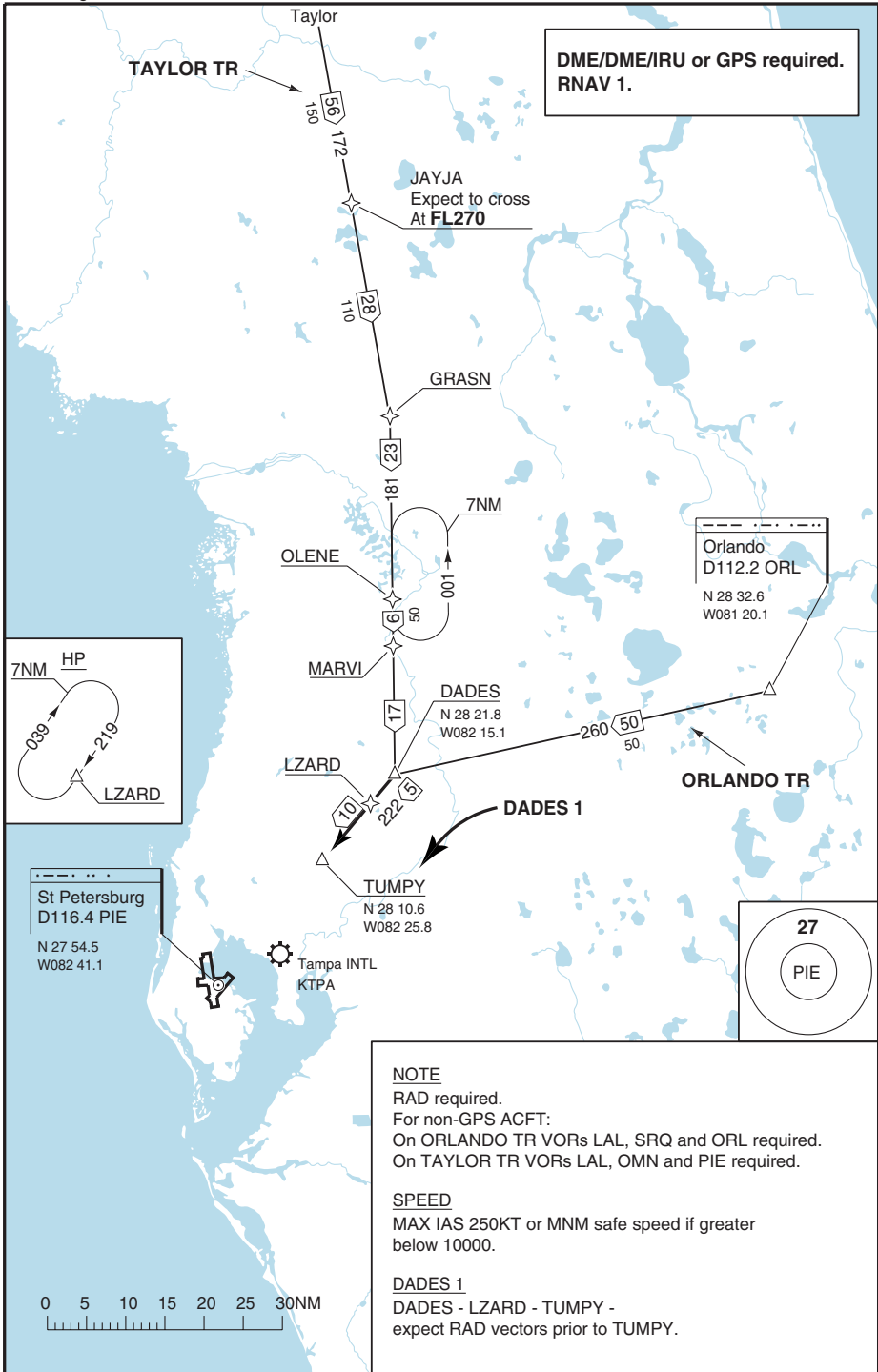
S
T
P
E
T
E
R
S
B
U
R
G

C
L
E
A
R
W
A
T
E
R

I
N
T
L

F
L

U
S
A



© European Aeronautical Group - kpie05abasa0 - G - P

Change: New

THIS CHART IS A PART OF NAVIGRAPH NDAC AND IS INTENDED FOR FLIGHT SIMULATION USE ONLY

S
T
P
E
T
E
R
S
B
U
R
G

C
L
E
A
R
W
A
T
E
R

I
N
T
L

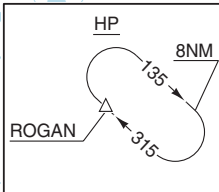
F
L

U
S
A

**DME/DME/IRU or GPS required.
RNAV 1.**

St Petersburg
D116.4 PIE
N 27 54.5
W 082 41.1

Tampa INTL
KTPA



JSTRM
DEAKK 1



PAHOKEE TR

ROGAN
N 27 15.1
W 081 53.6



LA BELLE TR

La Belle
D110.4 LBV
N 26 49.7
W 081 23.5

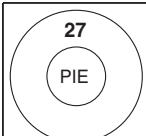
LEE COUNTY TR

Lee County
D111.8 RSW
N 26 31.8
W 081 46.6

NOTE
RAD required.
For non-GPS ACFT:
On PAHOKEE TR VORs LBV, PHK, SRQ and LAL required.
On LEE COUNTY and LA BELLE TR VORs LBV,
RSW, SRQ and LAL required.

SPEED
MAX IAS 250KT or MNM safe speed if greater
below 10000.

DEAKK 1
DEAKK - JSTRM -
expect RAD vectors prior to JSTRM.



© European Aeronautical Group - kpie06a@basao

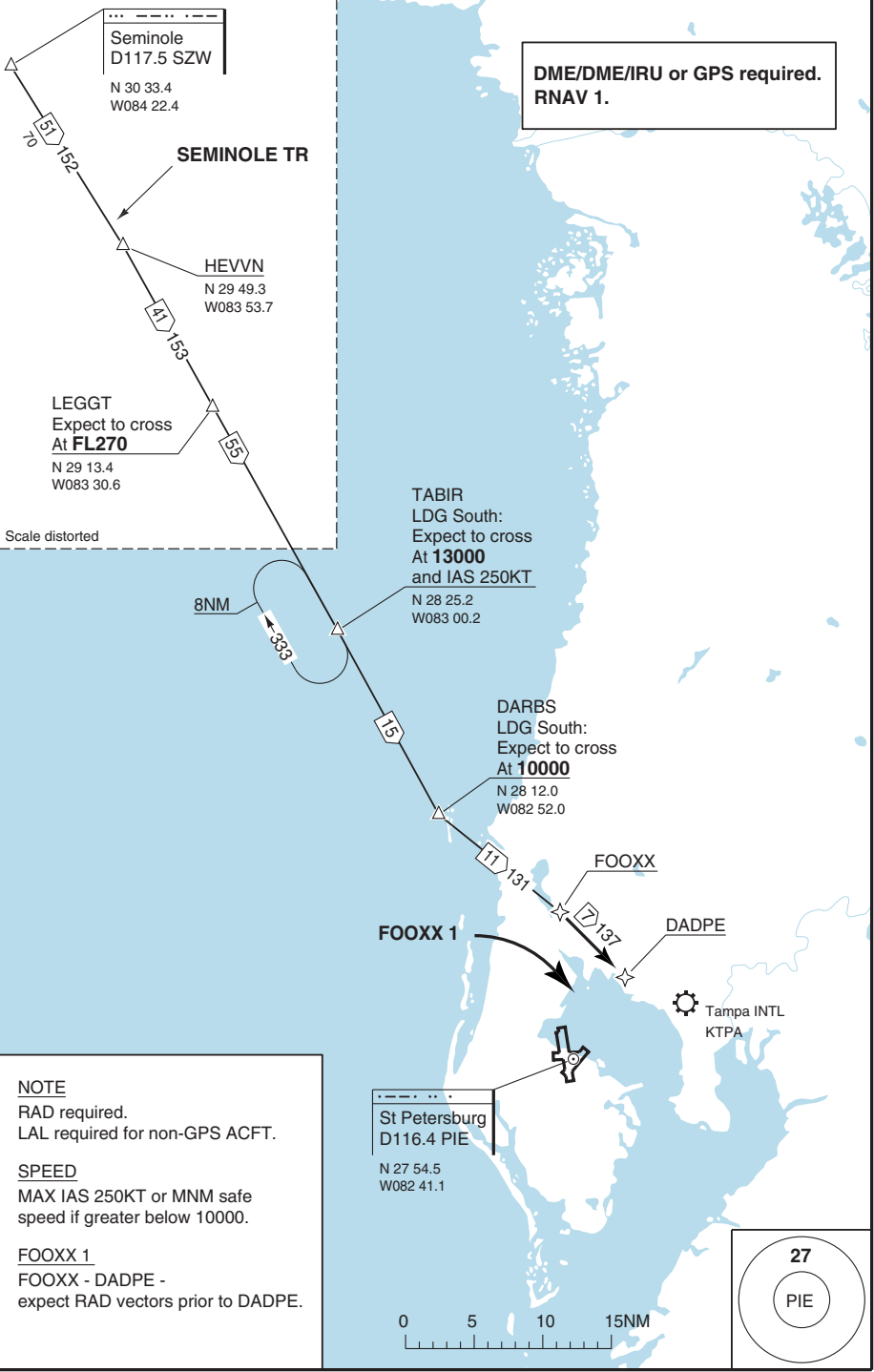
S
T
P
E
T
E
R
S
B
U
R
G

C
L
E
A
R
W
A
T
E
R

I
N
T
L

F
L

U
S
A



© European Aeronautical Group - kpie07abasa0 - G - P

NOTE
RAD required.
LAL required for non-GPS ACFT.

SPEED
MAX IAS 250KT or MNM safe speed if greater below 10000.

FOOXX 1
FOOXX - DADPE - expect RAD vectors prior to DADPE.

Reverse side blank

TERPS

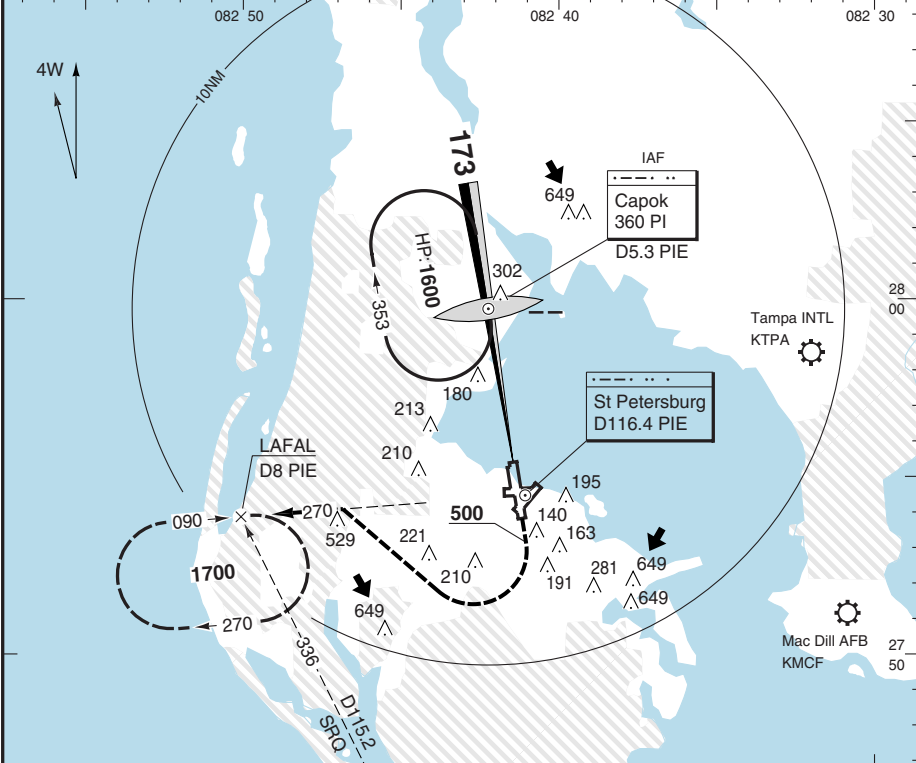
St Petersburg (APP/DEP: Tampa) PIE - KPIE 1 20 APR 08
 ATIS 134.500 CLR 120.600
 APP/DEP 125.300
 TWR 118.300 128.400 11-04
 GND 121.900

ILS - 17 L

S
T
P
E
T
E
R
S
B
U
R
G
C
L
E
A
R
W
A
T
E
R
I
N
T
L
F
L
U
S
A

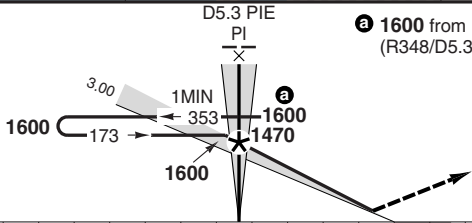
PAPI 3.00L
 LDG 2798x45M/9180x150FT/7.0

ILS 109.1 IPIE 173° GP 3.00 TCH 52



TA 18000

MAPt 4.4NM after PI / THR

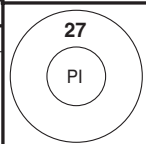


Climb on 173° to 500, then climbing right turn to 1700 via R270 D116.4 PIE to LAFAL and hold.

NM 13 12 11 10 9 8 7 6 5 4 3 2 1 0 1 2 3 4 5 6 7 8 9 10 NM

LLZ: FAF-MAP/ROD 90KT 2:56/530 100KT 2:38/590 120KT 2:12/710 140KT 1:53/820 160KT 1:39/940

PIE	3.3°	ALT	STATE	ILS	LLZ
D5.3	-	1600	ACFT	C D	C D
D5	-	1500	MIN	210 (200)	460 (452)
D4	-	1150	RVR/VIS	1800	4000 5300
D3	-	800	APL U/S	4000	1¼ 1½



NOTE
ADF or DME required.

TDZ ELEV 8 FT/AD ELEV 11 FT Change: New

THIS CHART IS A PART OF NAVIGRAPH NDAC AND IS INTENDED FOR FLIGHT SIMULATION USE ONLY

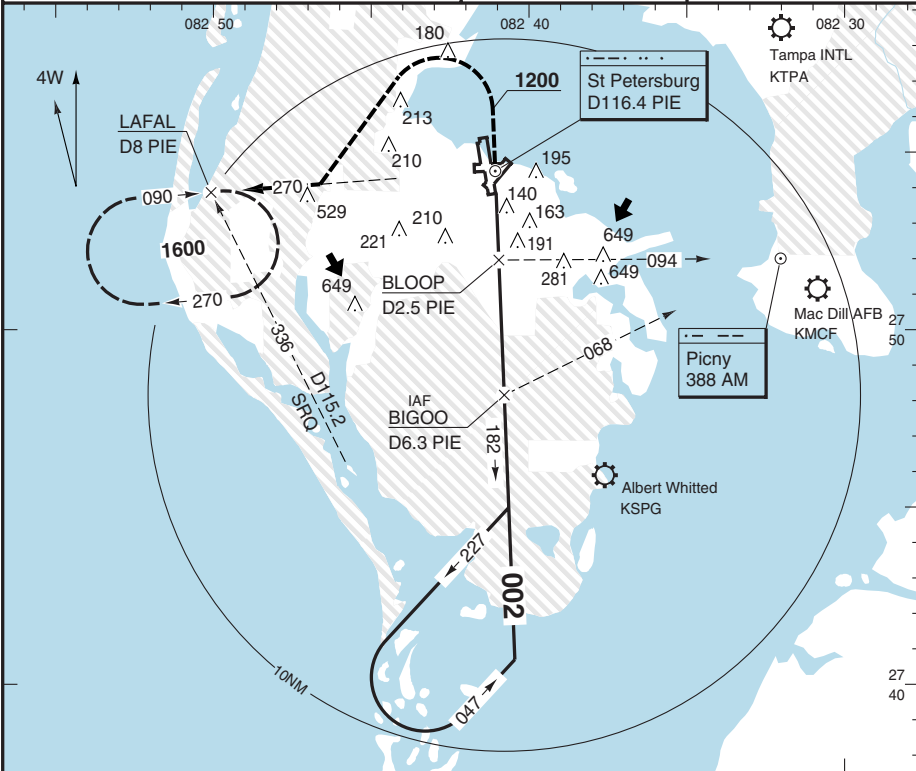
© European Aeronautical Group - kpie01basq0 - Y - P

AMD 19D

S T P E T E R S B U R G C L E A R W A T E R I N T L U S A

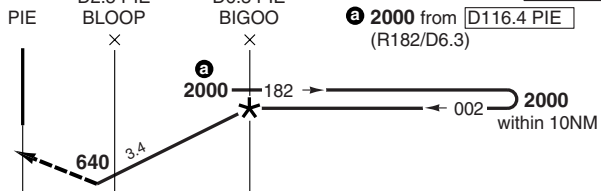
TERPS AMID-O-A

St Petersburg (APP/DEP: Tampa) PIE - KPIE **5** 20 APR 08 **VOR - 35 R**
 ATIS 134.500
 APP/DEP 125.300
 TWR 118.300 128.400 11-04
 GND 121.900
 CLR 120.600
 TCH 35
 PAPI 3.00L
 LDG 2657x45M/8720x150FT/0



MAP: D0.5 PIE / THR TA 18000

Climb on 002° to 1200, then climbing left turn to 1600 via R270 D116.4 PIE to LAFAL and hold.



NM 8 7 6 5 4 3 2 1 0 1 2 3 4 5 6 7 8 9 10 11 12 13 14 15 16 NM

VOR: FAF-MAP/ROD 90KT 3:56/510 100KT 3:32/560 120KT 2:57/680 140KT 2:31/790 160KT 2:13/900

PIE	3.2°	ALT	STATE		VOR+		BLOOP		VOR	
			ACFT	C	D	C	D	C	D	
D6.3	-	2000								
D6	-	1910	MIN	460	(450)	640	(630)			
D5	-	1570	VIS	1¼	1½	1¾	2			
D4	-	1240	APL U/S	1¼	1½	1¾	2			
D3	-	900								
D2	-	570								



NOTE
 ADF or DME required.

THR ELEV 11 FT/AD ELEV 11 FT Change: New

THIS CHART IS A PART OF NAVIGRAPH NDAC AND IS INTENDED FOR FLIGHT SIMULATION USE ONLY

© European Aeronautical Group - kpi05i|basq0

TERPS

St Petersburg (APP/DEP: Tampa) PIE - KPIE 6 20 APR 08

ATIS 134.500 CLR 120.600

APP/DEP 125.300

TWR 118.300 128.400 11-04

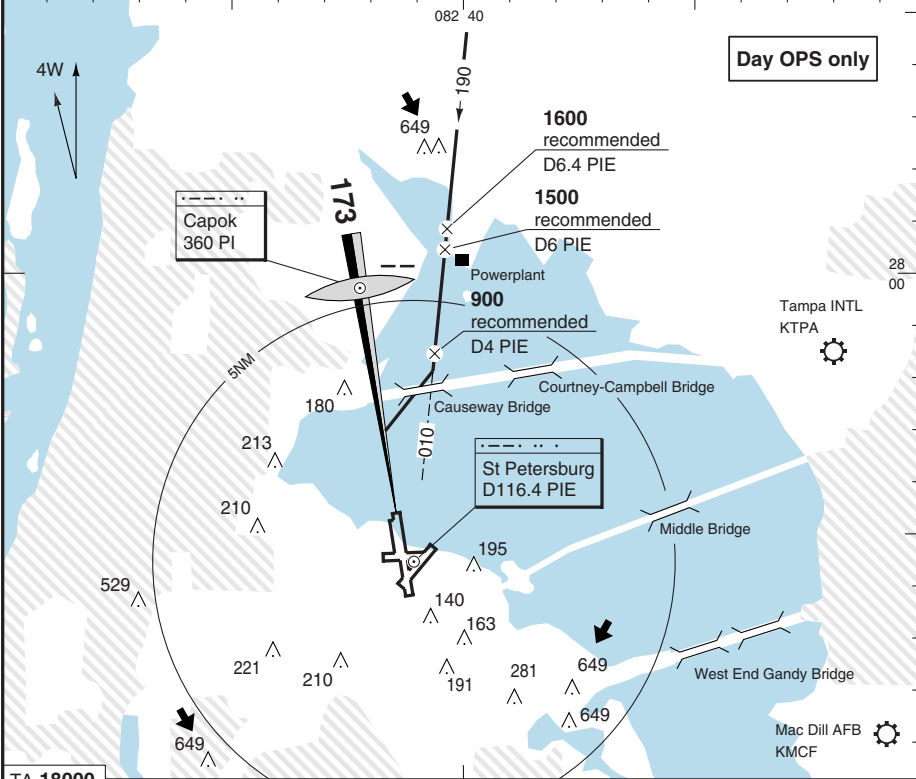
GND 121.900

NORTH BAY VISUAL - 17 L

PAPI 3.00L

LDG 2798x45M/9180x150FT/70

ILS 109.1 IPIE 173° GP 3.00 TCH 52



TA 18000

NORTH BAY VISUAL APCH
 When cleared for a NORTH BAY VISUAL APCH, ACFT will proceed visually from over the power plant (R010/D6 PIE) HDG 190° direct to the Causeway Bridge, then turn right to intercept the final approach course to RWY 17L.

NOT AUTHORIZED WHEN TOWER NOT IN OPERATION
 WX Min CEL/VIS **2100 FT/ 3 SM**

NOTE
 RAD required.

27
 PIE

TDZ ELEV 8 FT/AD ELEV 11 FT Change: New

THIS CHART IS A PART OF NAVIGRAPH NDAC AND IS INTENDED FOR FLIGHT SIMULATION USE ONLY

© European Aeronautical Group - kpie06ibasq0 - Y - P

ST
P
E
T
E
R
S
B
U
R
G
C
L
E
A
R
W
A
T
E
R
I
N
T
L
F
L
U
S
A

Reverse side blank